

20170617_SystemPerformanceCheck-D2600V2 SN 1036

Frequency: 2600 MHz; Duty Cycle: 1:1; Room Ambient Temperature: 24.0°C; Liquid Temperature: 23.0°C

Medium parameters used: $f = 2600$ MHz; $\sigma = 2.048$ S/m; $\epsilon_r = 37.683$; $\rho = 1000$ kg/m³

DASY5 Configuration:

- Area Scan Setting: Find Secondary Maximum Within: 2.0 dB and with a peak SAR value greater than 0.0012W/kg
- Electronics: DAE4 Sn1433; Calibrated: 3/8/2017
- Probe: EX3DV4 - SN3686; ConvF(6.96, 6.96, 6.96); Calibrated: 8/25/2016;
- Sensor-Surface: 2.5mm (Mechanical Surface Detection)
- Phantom: SAM with CRP; Type: SAM;

Head/Pin=100 mW/Area Scan (8x8x1): Measurement grid: dx=12mm, dy=12mm

Maximum value of SAR (measured) = 7.27 W/kg

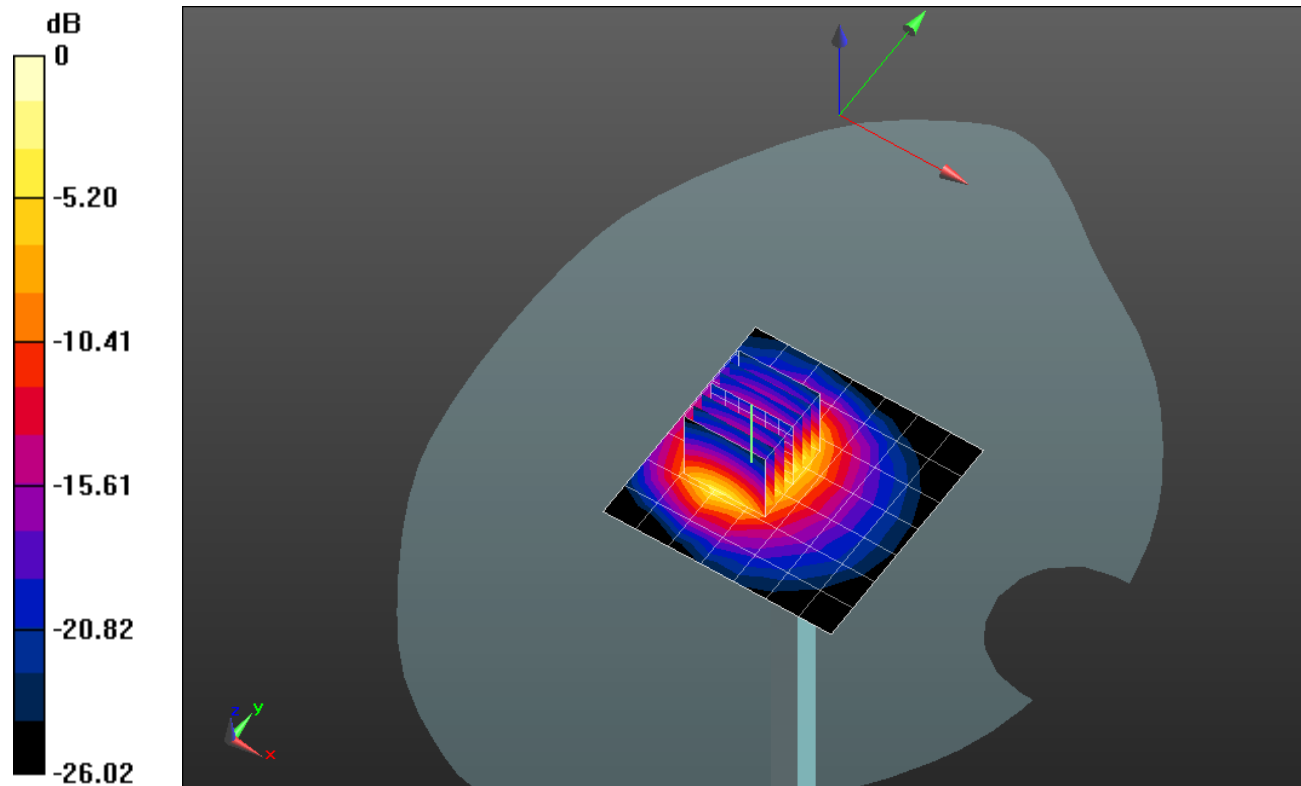
Head/Pin=100 mW/Zoom Scan (7x7x7)/Cube 0: Measurement grid: dx=5mm, dy=5mm, dz=5mm

Reference Value = 35.501 V/m; Power Drift = 0.15 dB

Peak SAR (extrapolated) = 13.6 W/kg

SAR(1 g) = 6.04 W/kg; SAR(10 g) = 2.65 W/kg

Maximum value of SAR (measured) = 8.79 W/kg

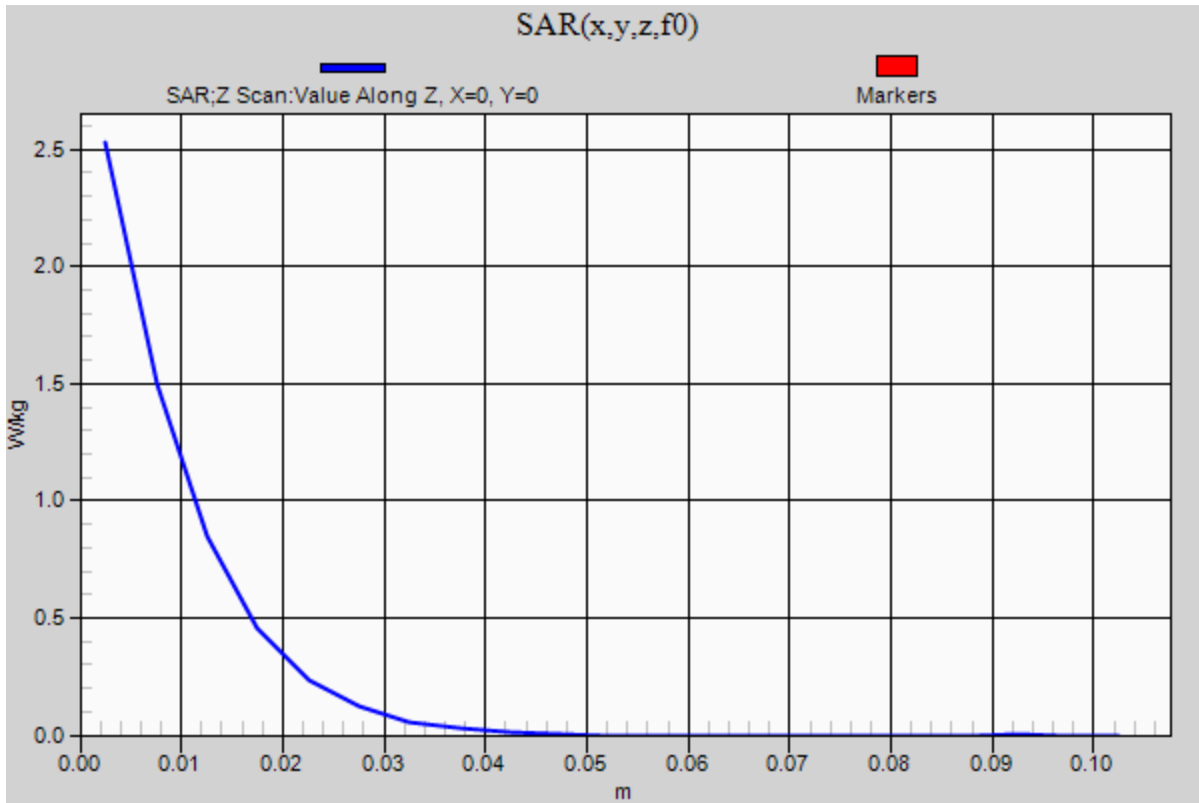


0 dB = 8.79 W/kg = 9.44 dBW/kg

20170617_SystemPerformanceCheck-D2600V2 SN 1036

Frequency: 2600 MHz; Duty Cycle: 1:1

Head/Pin=100 mW/Z Scan (1x1x21): Measurement grid: dx=20mm, dy=20mm, dz=5mm
Maximum value of SAR (measured) = 2.53 W/kg



20170619_SystemPerformanceCheck-D2600V2 SN 1036

Frequency: 2600 MHz; Duty Cycle: 1:1; Room Ambient Temperature: 24.0°C; Liquid Temperature: 23.0°C

Medium parameters used: $f = 2600$ MHz; $\sigma = 2.105$ S/m; $\epsilon_r = 50.704$; $\rho = 1000$ kg/m³

DASY5 Configuration:

- Area Scan Setting: Find Secondary Maximum Within: 2.0 dB and with a peak SAR value greater than 0.0012W/kg
- Electronics: DAE4 Sn1343; Calibrated: 8/15/2016
- Probe: EX3DV4 - SN3871; ConvF(7.51, 7.51, 7.51); Calibrated: 8/25/2016;
- Sensor-Surface: 2.5mm (Mechanical Surface Detection)
- Phantom: ELI B v5.0; Type: QD OVA 002 AA; Serial: 1196

Body/Pin=100 mW/Area Scan (8x8x1): Measurement grid: dx=12mm, dy=12mm

Maximum value of SAR (measured) = 6.16 W/kg

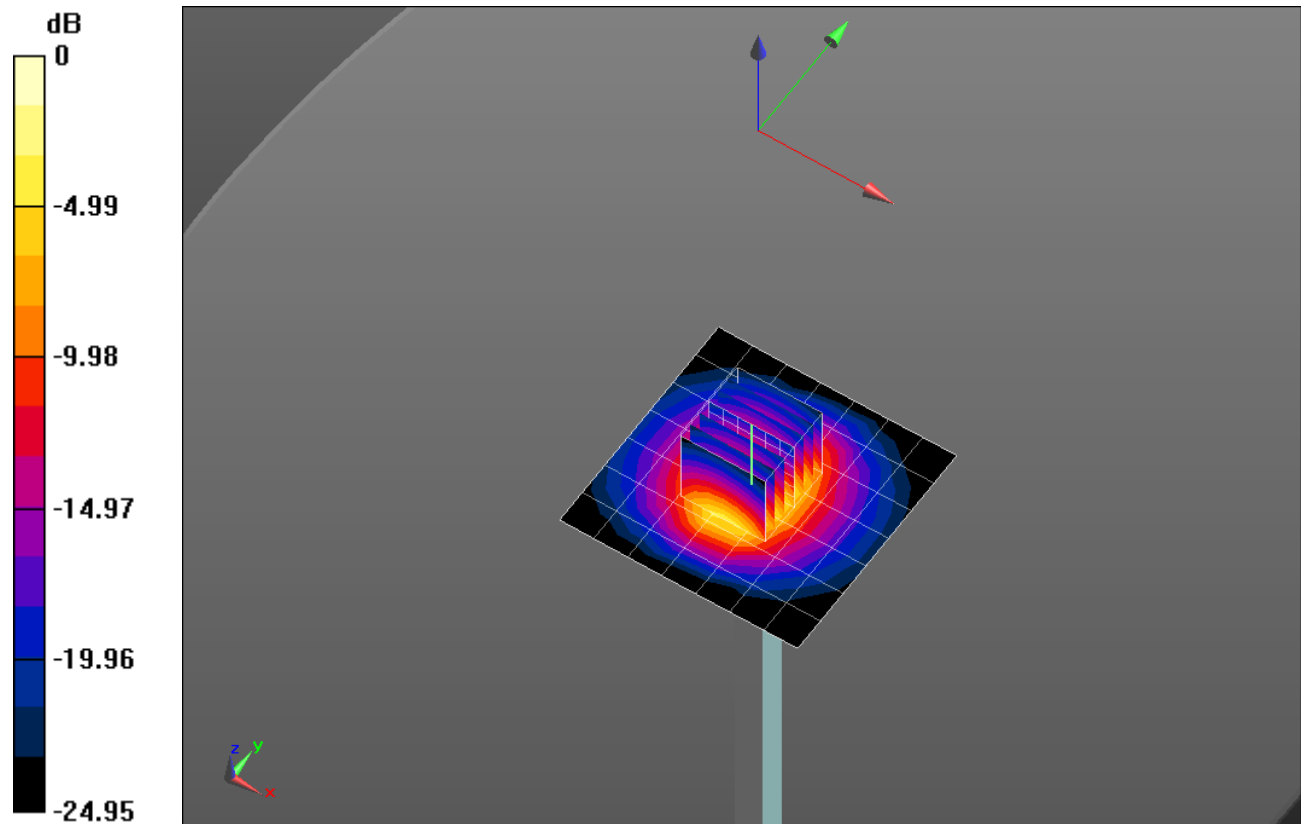
Body/Pin=100 mW/Zoom Scan (7x7x7)/Cube 0: Measurement grid: dx=5mm, dy=5mm, dz=5mm

Reference Value = 59.705 V/m; Power Drift = 0.07 dB

Peak SAR (extrapolated) = 11.6 W/kg

SAR(1 g) = 5.3 W/kg; SAR(10 g) = 2.33 W/kg

Maximum value of SAR (measured) = 7.72 W/kg



0 dB = 7.72 W/kg = 8.88 dBW/kg

20170619_SystemPerformanceCheck-D2600V2 SN 1036

Frequency: 2600 MHz; Duty Cycle: 1:1

Body/Pin=100 mW/Z Scan (1x1x21): Measurement grid: dx=20mm, dy=20mm, dz=5mm
Maximum value of SAR (measured) = 7.48 W/kg

