

LTE Band 7

Frequency: 2535 MHz; Duty Cycle: 1:1; Room Ambient Temperature: 24.0°C; Liquid Temperature: 23.0°C

Medium parameters used: $f = 2535 \text{ MHz}$; $\sigma = 1.939 \text{ S/m}$; $\epsilon_r = 38.226$; $\rho = 1000 \text{ kg/m}^3$

DASY5 Configuration:

- Area Scan Setting: Find Secondary Maximum Within: 2.0 dB and with a peak SAR value greater than 0.0012W/kg
- Electronics: DAE4 Sn1359; Calibrated: 2/10/2017
- Probe: EX3DV4 - SN3936; ConvF(7.03, 7.03, 7.03); Calibrated: 7/26/2016;
- Sensor-Surface: 2.5mm (Mechanical Surface Detection)
- Phantom: SAM with CRP v5.0; Type: QD000P40CD; Serial: 1772

RHS/Touch_QPSK RB 1,0 Ch 21100/Area Scan (10x16x1): Measurement grid: dx=12mm, dy=12mm

Maximum value of SAR (measured) = 0.565 W/kg

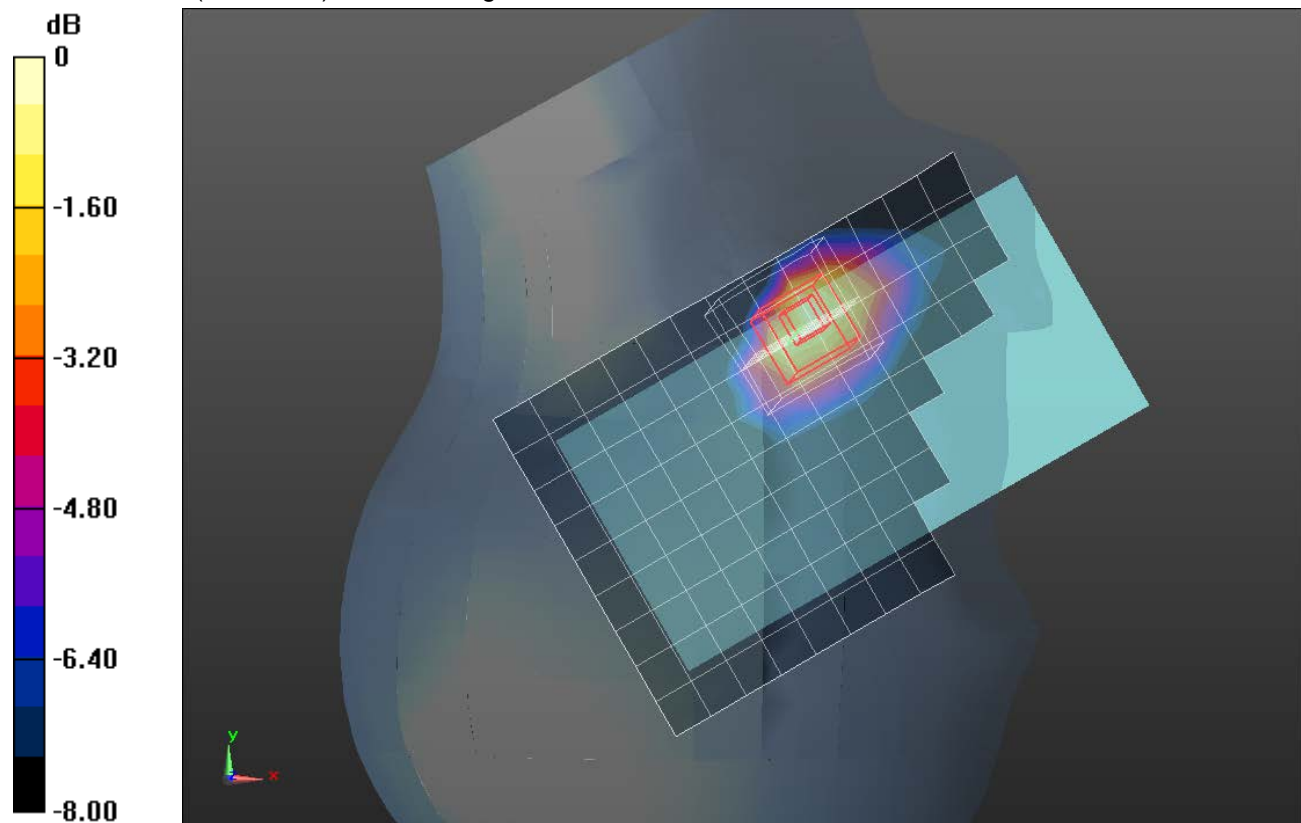
RHS/Touch_QPSK RB 1,0 Ch 21100/Zoom Scan (8x8x7)/Cube 0: Measurement grid: dx=5mm, dy=5mm, dz=5mm

Reference Value = 17.52 V/m; Power Drift = 0.01 dB

Peak SAR (extrapolated) = 0.905 W/kg

SAR(1 g) = 0.480 W/kg; SAR(10 g) = 0.248 W/kg

Maximum value of SAR (measured) = 0.644 W/kg



0 dB = 0.644 W/kg = -1.91 dBW/kg

LTE Band 7

Frequency: 2535 MHz; Duty Cycle: 1:1; Room Ambient Temperature: 24.0°C; Liquid Temperature: 23.0°C

Medium parameters used: $f = 2535 \text{ MHz}$; $\sigma = 2.16 \text{ S/m}$; $\epsilon_r = 50.5$; $\rho = 1000 \text{ kg/m}^3$

DASY5 Configuration:

- Area Scan Setting: Find Secondary Maximum Within: 2.0 dB and with a peak SAR value greater than 0.0012W/kg
- Electronics: DAE4 Sn1359; Calibrated: 2/10/2017
- Probe: EX3DV4 - SN3936; ConvF(7.07, 7.07, 7.07); Calibrated: 7/26/2016;
- Sensor-Surface: 2.5mm (Mechanical Surface Detection)
- Phantom: ELI v5.0 (A); Type: QDOVA002AA; Serial: 1256

Rear/QPSK RB 1,0 Ch 21100 (15mm)/Area Scan (9x16x1): Measurement grid: dx=12mm, dy=12mm
 Maximum value of SAR (measured) = 0.316 W/kg

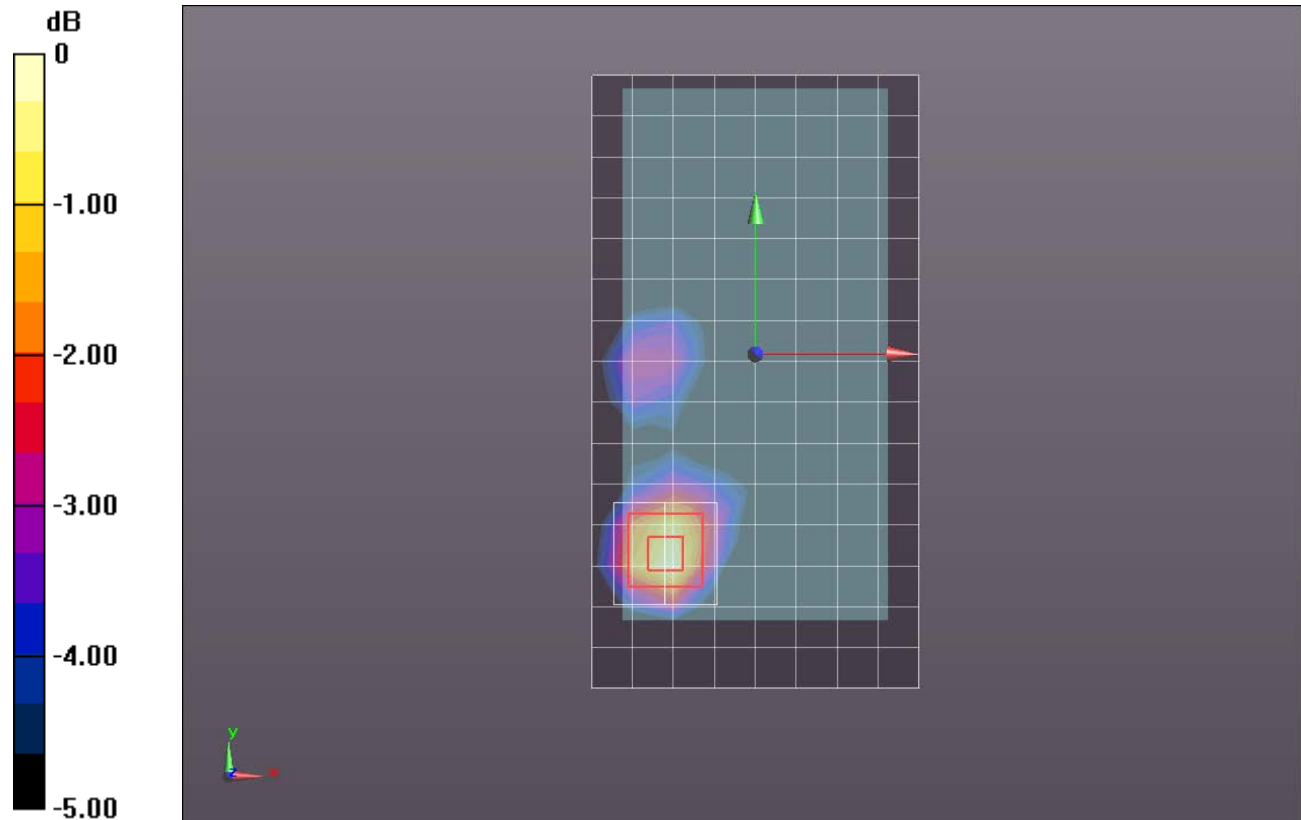
Rear/QPSK RB 1,0 Ch 21100 (15mm)/Zoom Scan (7x7x7)/Cube 0: Measurement grid: dx=5mm, dy=5mm, dz=5mm

Reference Value = 12.12 V/m; Power Drift = 0.08 dB

Peak SAR (extrapolated) = 0.461 W/kg

SAR(1 g) = 0.244 W/kg; SAR(10 g) = 0.128 W/kg

Maximum value of SAR (measured) = 0.326 W/kg



0 dB = 0.326 W/kg = -4.87 dBW/kg

LTE Band 7

Frequency: 2535 MHz; Duty Cycle: 1:1; Room Ambient Temperature: 24.0°C; Liquid Temperature: 23.0°C

Medium parameters used: $f = 2535 \text{ MHz}$; $\sigma = 2.16 \text{ S/m}$; $\epsilon_r = 50.5$; $\rho = 1000 \text{ kg/m}^3$

DASY5 Configuration:

- Area Scan Setting: Find Secondary Maximum Within: 2.0 dB and with a peak SAR value greater than 0.0012W/kg
- Electronics: DAE4 Sn1359; Calibrated: 2/10/2017
- Probe: EX3DV4 - SN3936; ConvF(7.07, 7.07, 7.07); Calibrated: 7/26/2016;
- Sensor-Surface: 2.5mm (Mechanical Surface Detection (Locations From Previous Scan Used)), Sensor-Surface: 2.5mm (Mechanical Surface Detection)
- Phantom: ELI v5.0 (A); Type: QDOVA002AA; Serial: 1256

Rear/QPSK RB 1,0 Ch 21100 (10mm)/Area Scan (10x16x1): Measurement grid: $dx=12\text{mm}$, $dy=12\text{mm}$

Maximum value of SAR (measured) = 0.612 W/kg

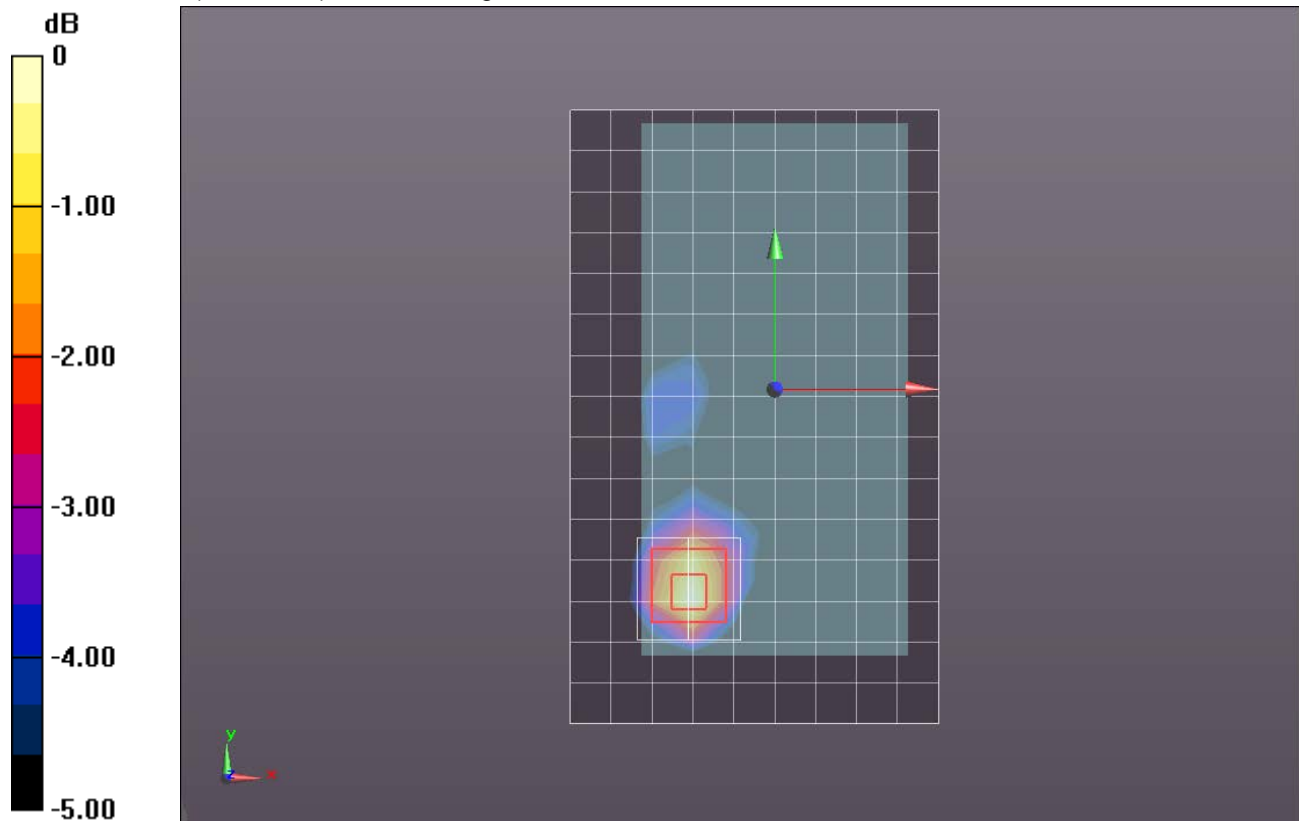
Rear/QPSK RB 1,0 Ch 21100 (10mm)/Zoom Scan (7x7x7)/Cube 0: Measurement grid: $dx=5\text{mm}$, $dy=5\text{mm}$, $dz=5\text{mm}$

Reference Value = 16.87 V/m; Power Drift = 0.03 dB

Peak SAR (extrapolated) = 0.867 W/kg

SAR(1 g) = 0.457 W/kg; SAR(10 g) = 0.235 W/kg

Maximum value of SAR (measured) = 0.614 W/kg



0 dB = 0.614 W/kg = -2.12 dBW/kg

LTE Band 41

Frequency: 2593 MHz; Duty Cycle: 1:1.59956; Room Ambient Temperature: 24.0°C; Liquid Temperature: 23.0°C
 Medium parameters used (interpolated): $f = 2593$ MHz; $\sigma = 1.992$ S/m; $\epsilon_r = 38.04$; $\rho = 1000$ kg/m³

DASY5 Configuration:

- Area Scan Setting: Find Secondary Maximum Within: 2.0 dB and with a peak SAR value greater than 0.0012W/kg
- Electronics: DAE4 Sn1359; Calibrated: 2/10/2017
- Probe: EX3DV4 - SN3936; ConvF(7.03, 7.03, 7.03); Calibrated: 7/26/2016;
- Sensor-Surface: 2.5mm (Mechanical Surface Detection)
- Phantom: SAM with CRP v5.0; Type: QD000P40CD; Serial: 1772

RHS/Touch_QPSK RB 1,0 Ch 40620/Area Scan (9x16x1): Measurement grid: dx=12mm, dy=12mm

[Info: Interpolated medium parameters used for SAR evaluation.](#)

Maximum value of SAR (measured) = 0.335 W/kg

RHS/Touch_QPSK RB 1,0 Ch 40620/Zoom Scan (7x7x7)/Cube 0: Measurement grid: dx=5mm, dy=5mm, dz=5mm

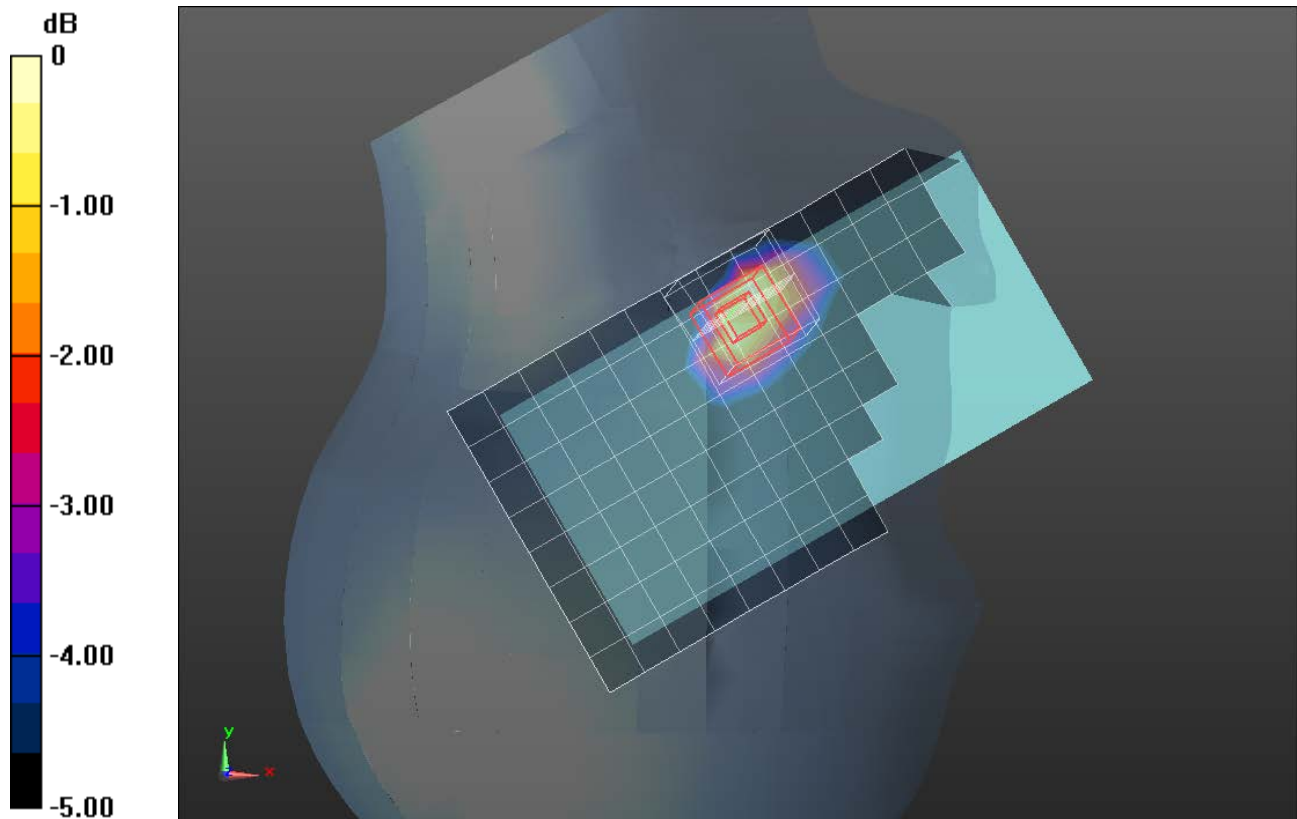
Reference Value = 13.13 V/m; Power Drift = -0.13 dB

Peak SAR (extrapolated) = 0.509 W/kg

SAR(1 g) = 0.269 W/kg; SAR(10 g) = 0.139 W/kg

[Info: Interpolated medium parameters used for SAR evaluation.](#)

Maximum value of SAR (measured) = 0.356 W/kg



0 dB = 0.356 W/kg = -4.49 dBW/kg

LTE Band 41

Frequency: 2593 MHz; Duty Cycle: 1:1.59956; Room Ambient Temperature: 24.0°C; Liquid Temperature: 23.0°C
 Medium parameters used (interpolated): $f = 2593$ MHz; $\sigma = 2.217$ S/m; $\epsilon_r = 50.359$; $\rho = 1000$ kg/m³

DASY5 Configuration:

- Area Scan Setting: Find Secondary Maximum Within: 2.0 dB and with a peak SAR value greater than 0.0012W/kg
- Electronics: DAE4 Sn1359; Calibrated: 2/10/2017
- Probe: EX3DV4 - SN3936; ConvF(7.07, 7.07, 7.07); Calibrated: 7/26/2016;
- Sensor-Surface: 2.5mm (Mechanical Surface Detection (Locations From Previous Scan Used)), Sensor-Surface: 2.5mm (Mechanical Surface Detection)
- Phantom: ELI v5.0 (A); Type: QDOVA002AA; Serial: 1256

Rear/QPSK RB 1,0 Ch 40620 (15mm)/Area Scan (11x16x1): Measurement grid: dx=12mm, dy=12mm

[Info: Interpolated medium parameters used for SAR evaluation.](#)

Maximum value of SAR (measured) = 0.269 W/kg

Rear/QPSK RB 1,0 Ch 40620 (15mm)/Zoom Scan (7x7x7)/Cube 0: Measurement grid: dx=5mm, dy=5mm, dz=5mm

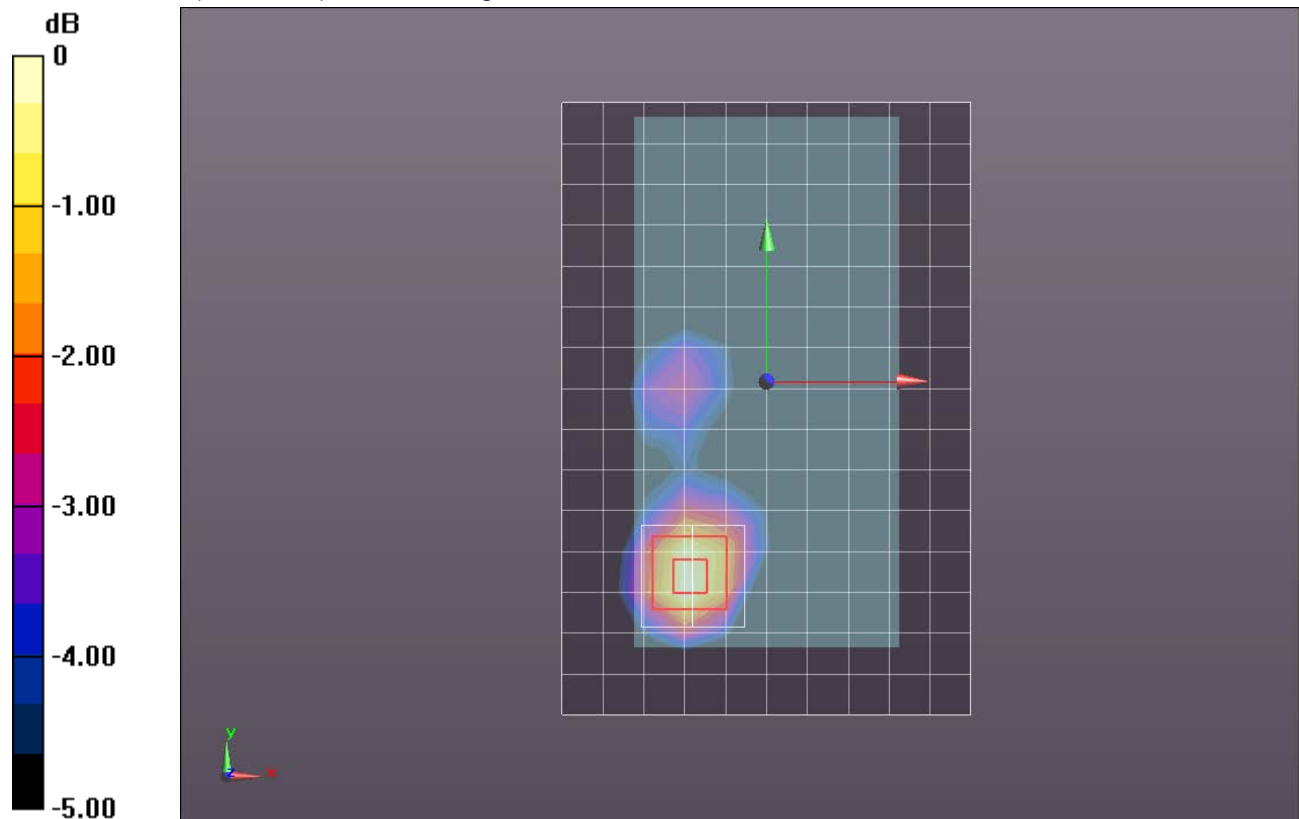
Reference Value = 10.98 V/m; Power Drift = -0.02 dB

Peak SAR (extrapolated) = 0.390 W/kg

SAR(1 g) = 0.205 W/kg; SAR(10 g) = 0.108 W/kg

[Info: Interpolated medium parameters used for SAR evaluation.](#)

Maximum value of SAR (measured) = 0.272 W/kg



0 dB = 0.272 W/kg = -5.65 dBW/kg

LTE Band 41

Frequency: 2593 MHz; Duty Cycle: 1:1.59956; Room Ambient Temperature: 24.0°C; Liquid Temperature: 23.0°C
 Medium parameters used (interpolated): $f = 2593$ MHz; $\sigma = 2.217$ S/m; $\epsilon_r = 50.359$; $\rho = 1000$ kg/m³
 DASY5 Configuration:

- Area Scan Setting: Find Secondary Maximum Within: 2.0 dB and with a peak SAR value greater than 0.0012W/kg
- Electronics: DAE4 Sn1359; Calibrated: 2/10/2017
- Probe: EX3DV4 - SN3936; ConvF(7.07, 7.07, 7.07); Calibrated: 7/26/2016;
- Sensor-Surface: 2.5mm (Mechanical Surface Detection)
- Phantom: ELI v5.0 (A); Type: QDOVA002AA; Serial: 1256

Rear/QPSK RB 1,0 Ch 40620 (10mm)/Area Scan (11x16x1): Measurement grid: dx=12mm, dy=12mm

[Info: Interpolated medium parameters used for SAR evaluation.](#)

Maximum value of SAR (measured) = 0.478 W/kg

Rear/QPSK RB 1,0 Ch 40620 (10mm)/Zoom Scan (7x7x7)/Cube 0: Measurement grid: dx=5mm, dy=5mm, dz=5mm

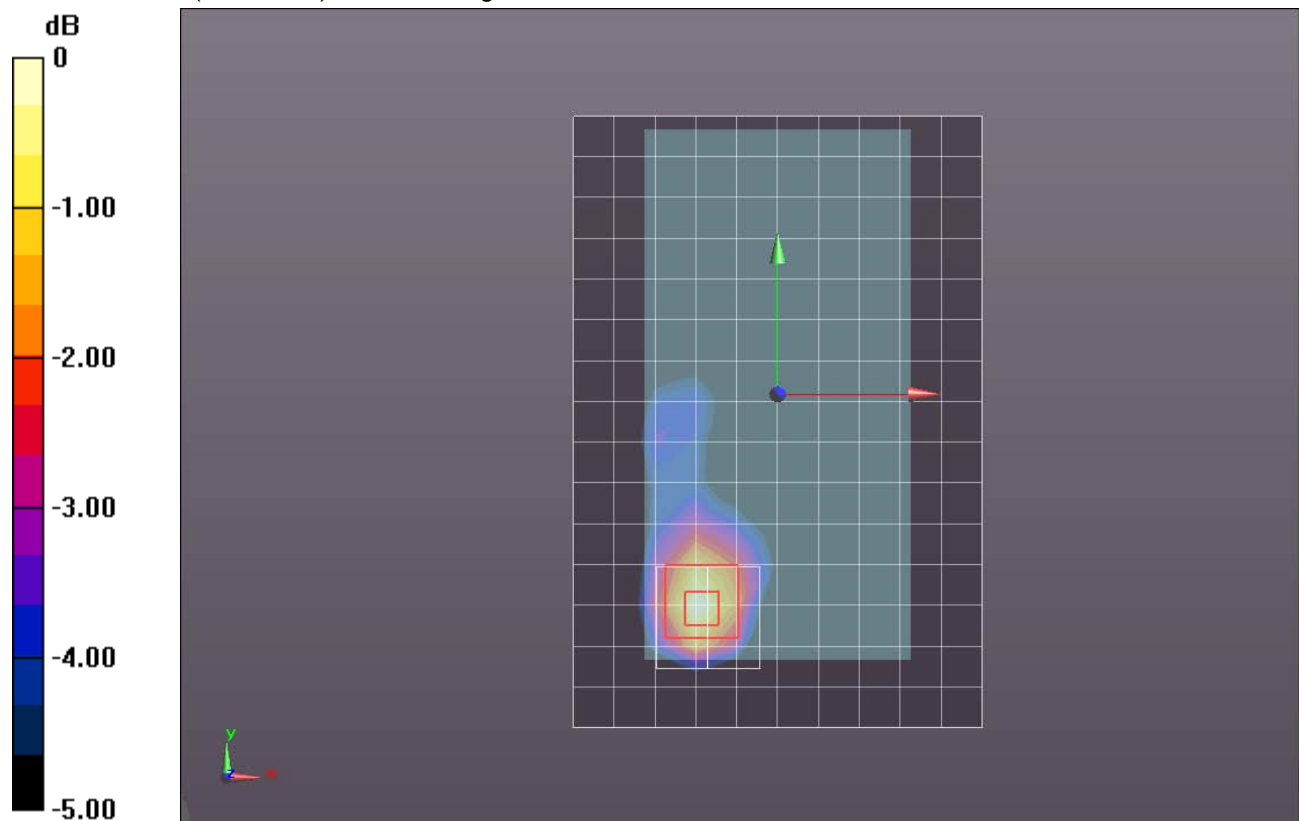
Reference Value = 14.76 V/m; Power Drift = -0.03 dB

Peak SAR (extrapolated) = 0.686 W/kg

SAR(1 g) = 0.358 W/kg; SAR(10 g) = 0.186 W/kg

[Info: Interpolated medium parameters used for SAR evaluation.](#)

Maximum value of SAR (measured) = 0.472 W/kg



0 dB = 0.472 W/kg = -3.26 dBW/kg