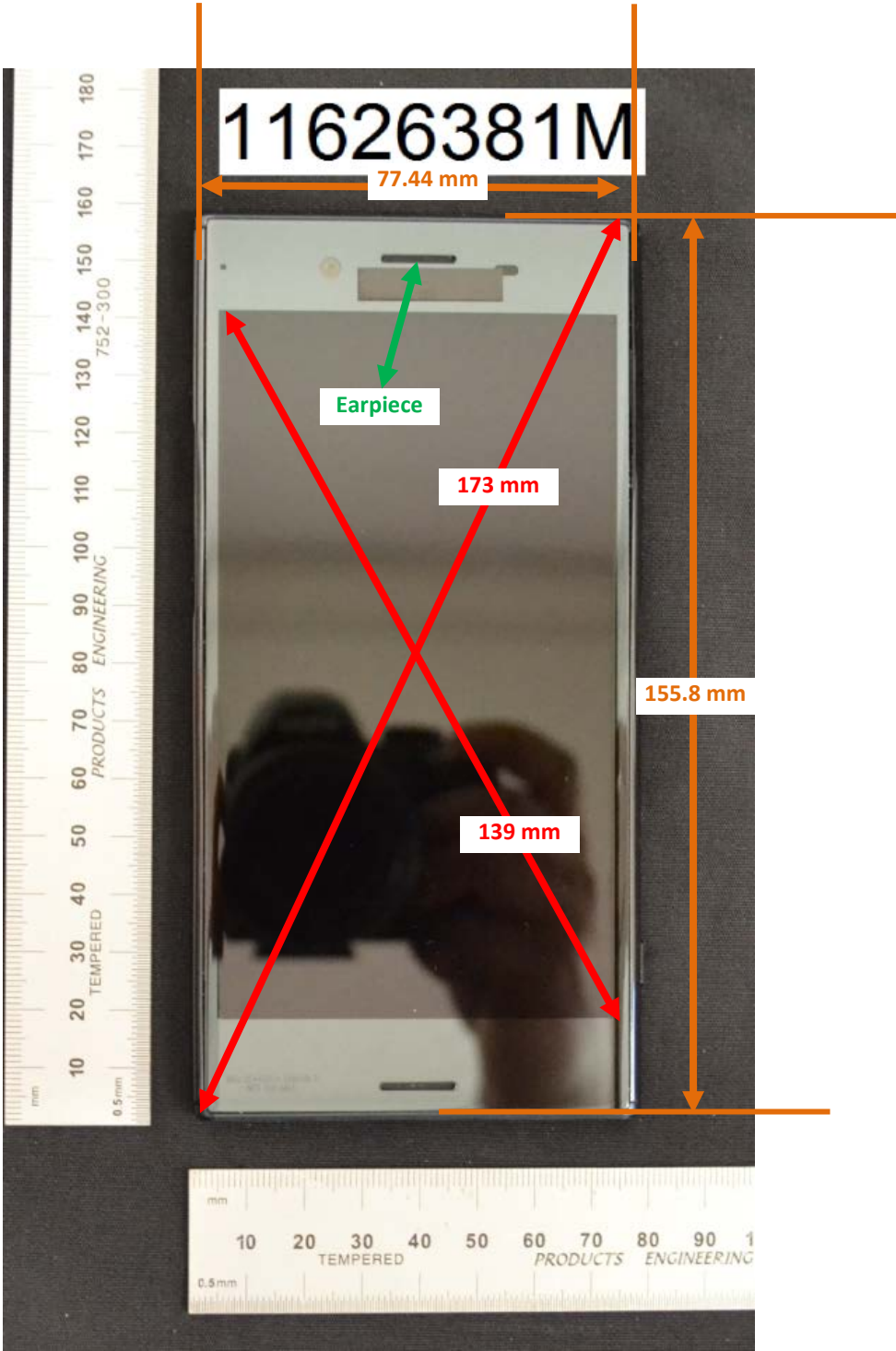


DUT and SAR Set-up Photos

Overall Dimensions



Front View of the DUT



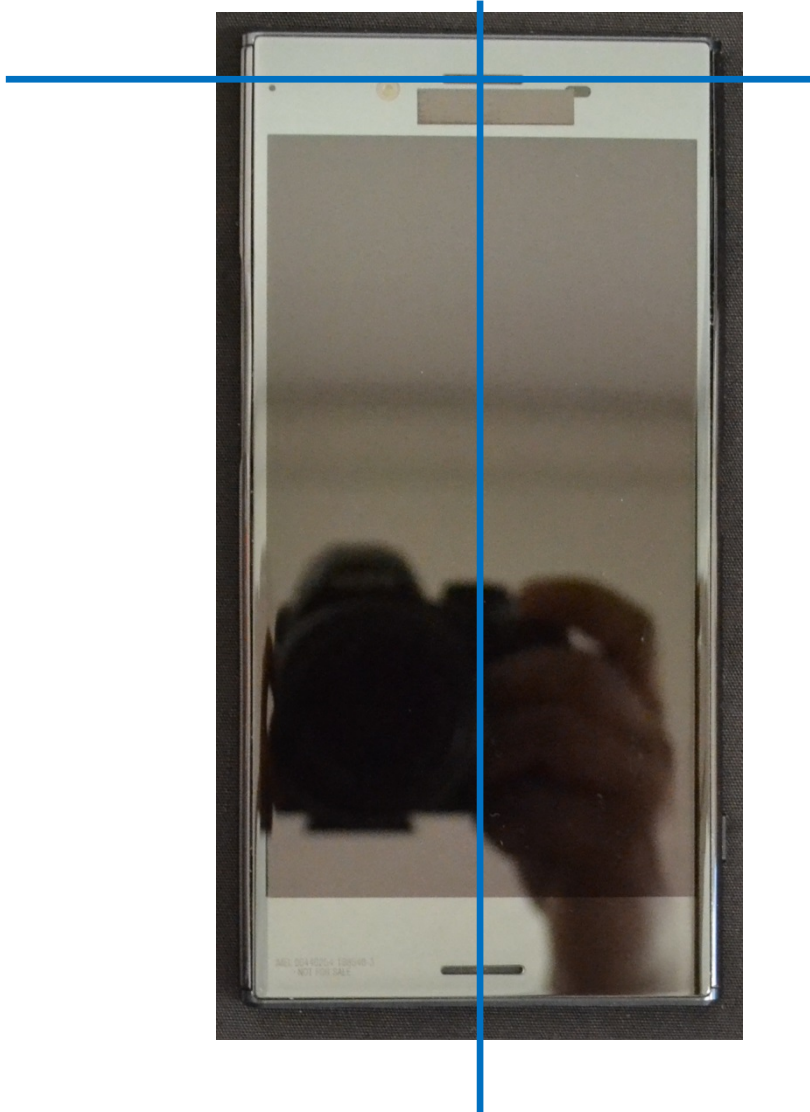
Rear View of the DUT



Setup Photos

Handset Vertical and Horizontal Reference Lines

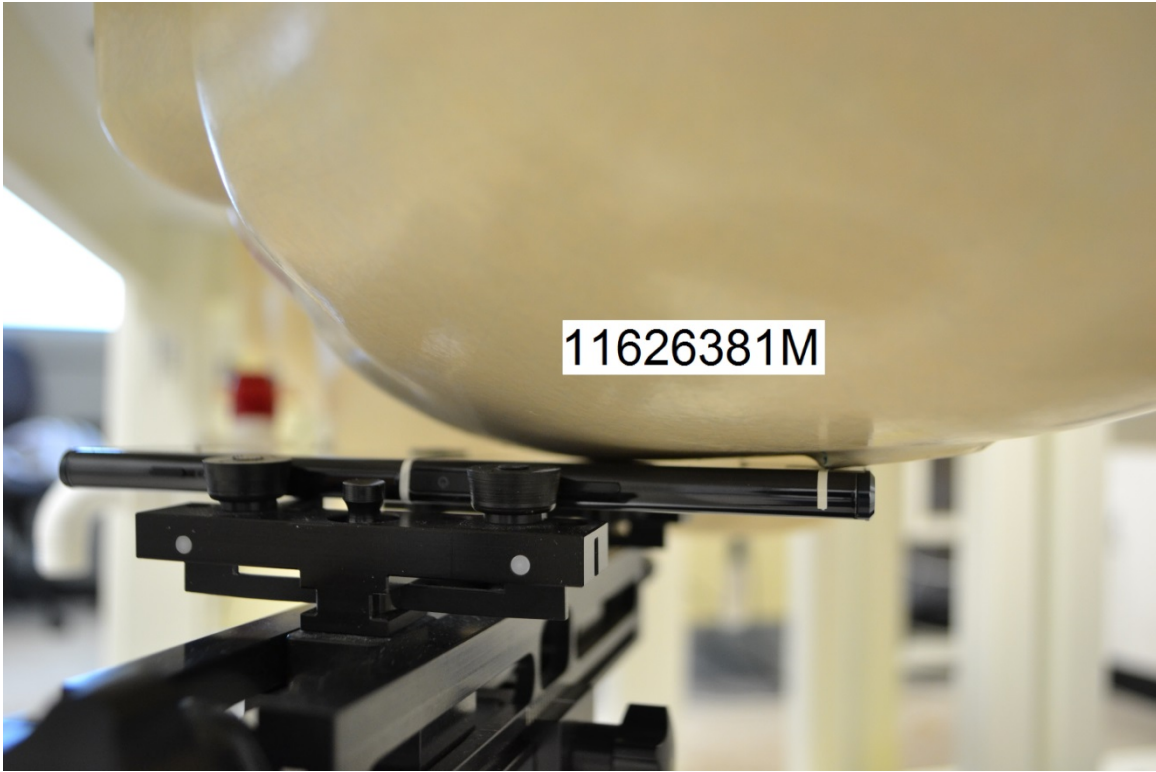
Vertical
Center Line



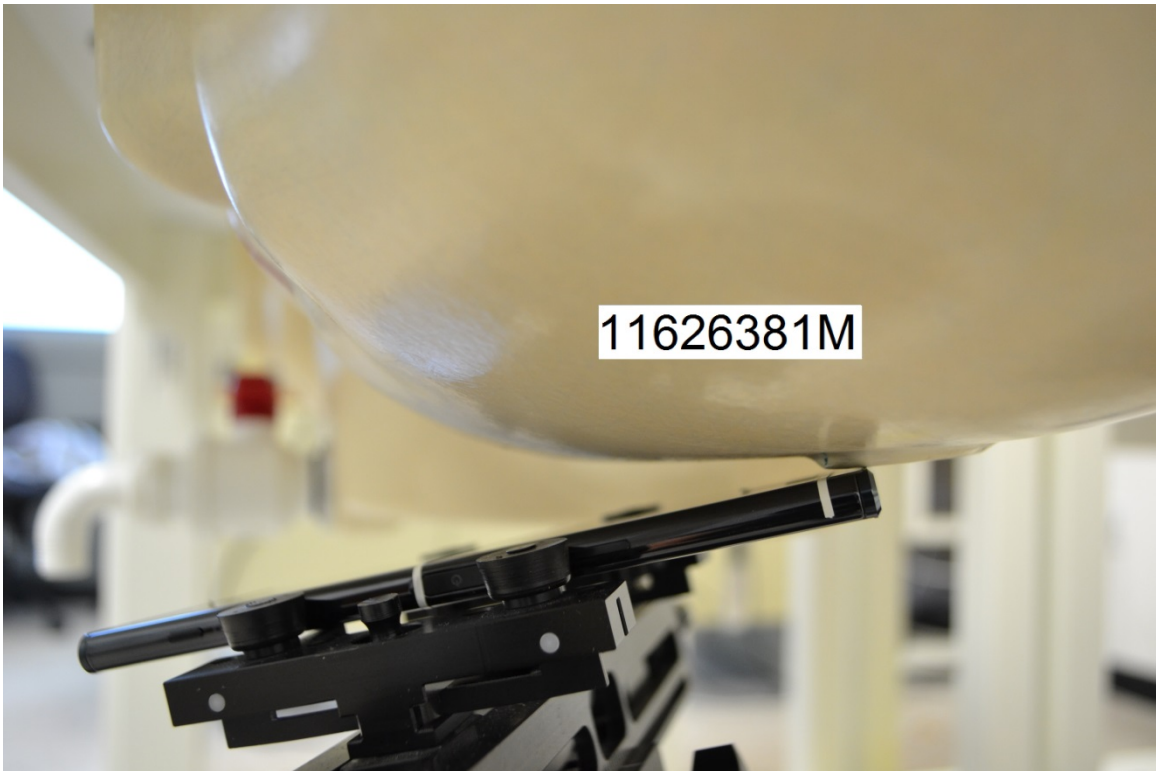
Horizontal
Line

Head Exposure Conditions

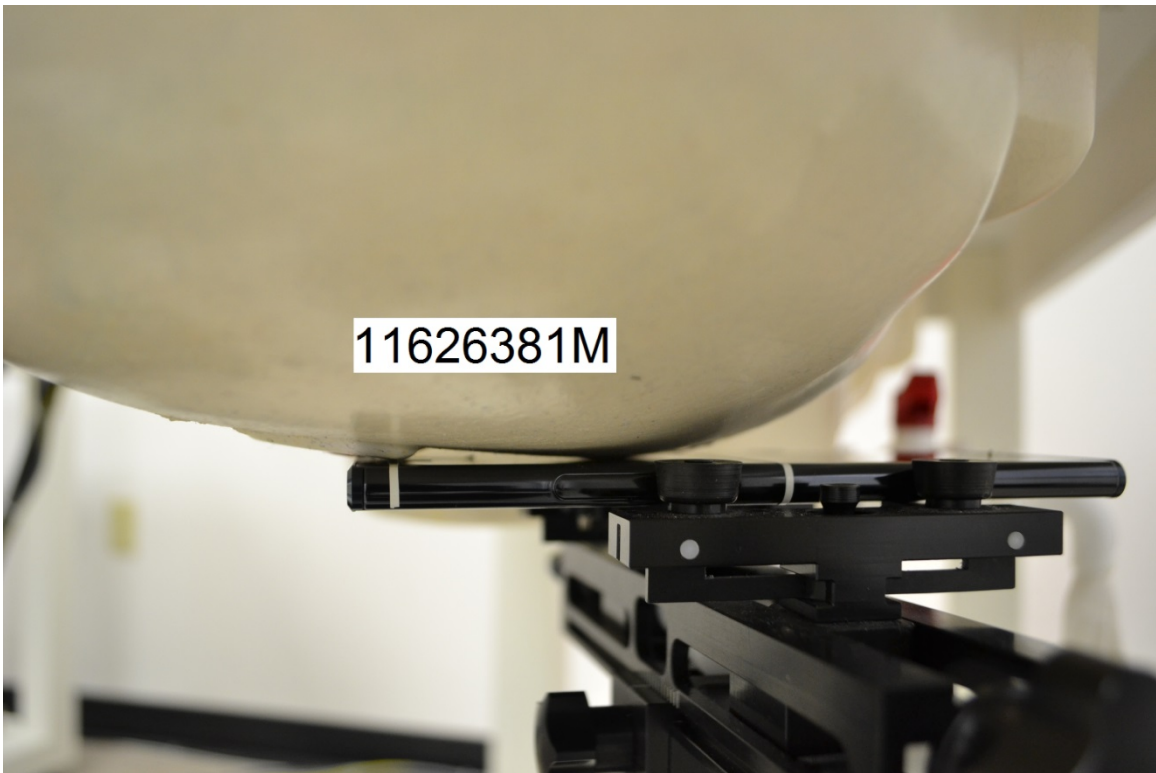
Left Touch



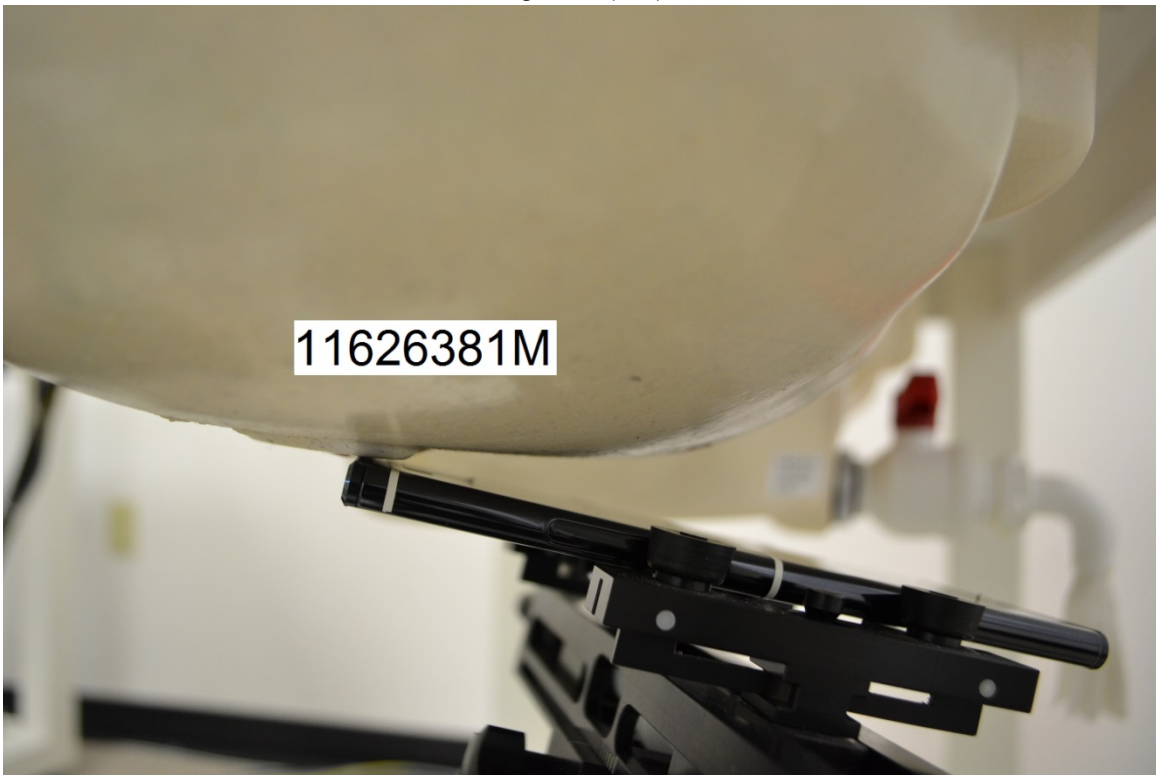
Left Tilt (15°)



Right Touch

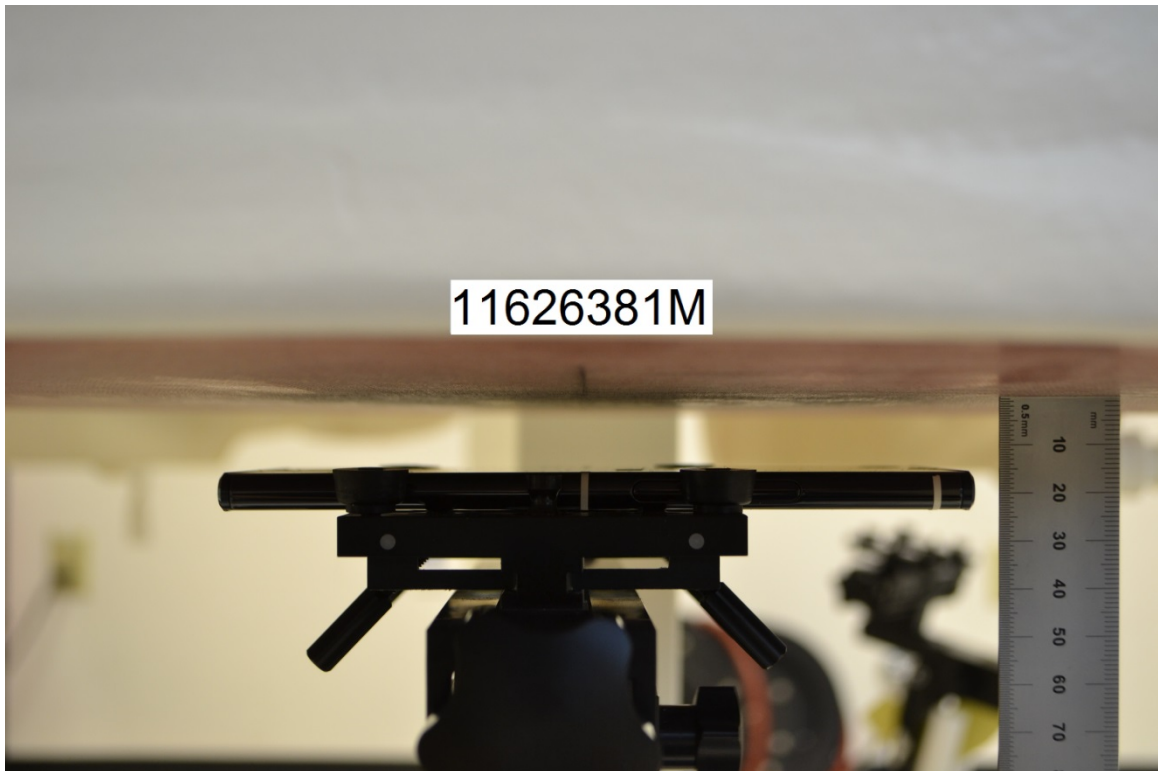


Right Tilt (15°)

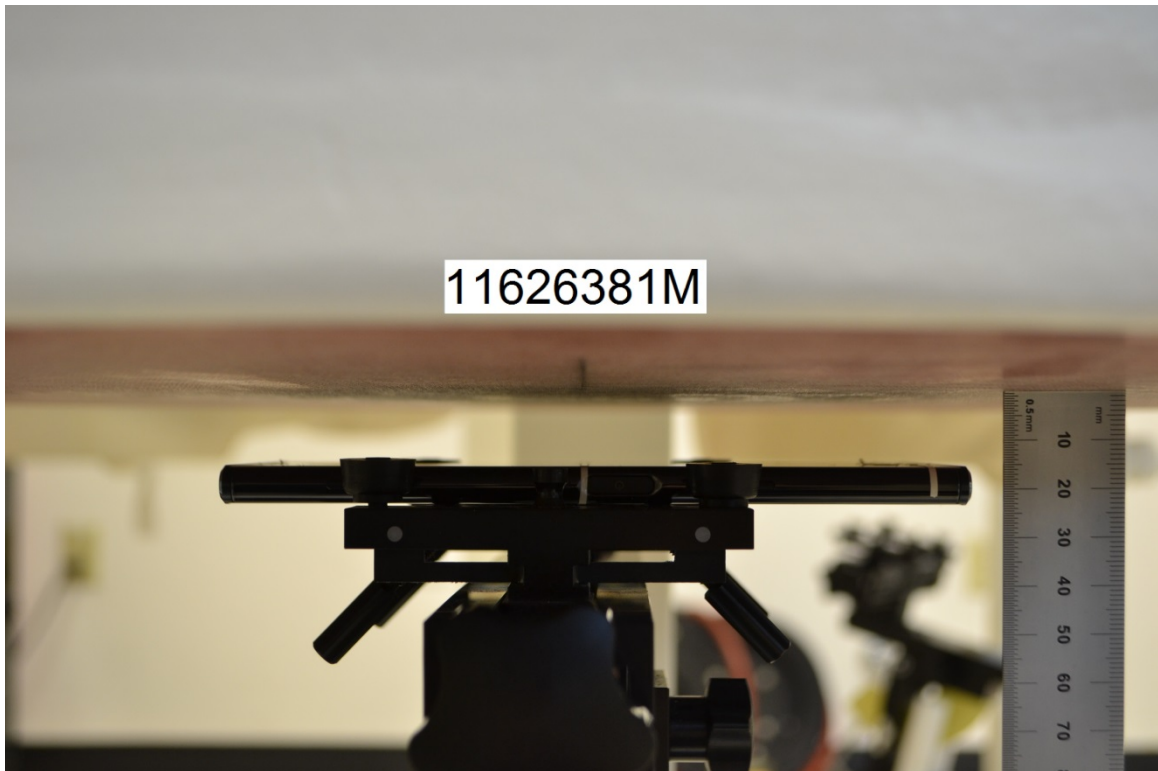


Body-worn Exposure Conditions

Rear @15mm

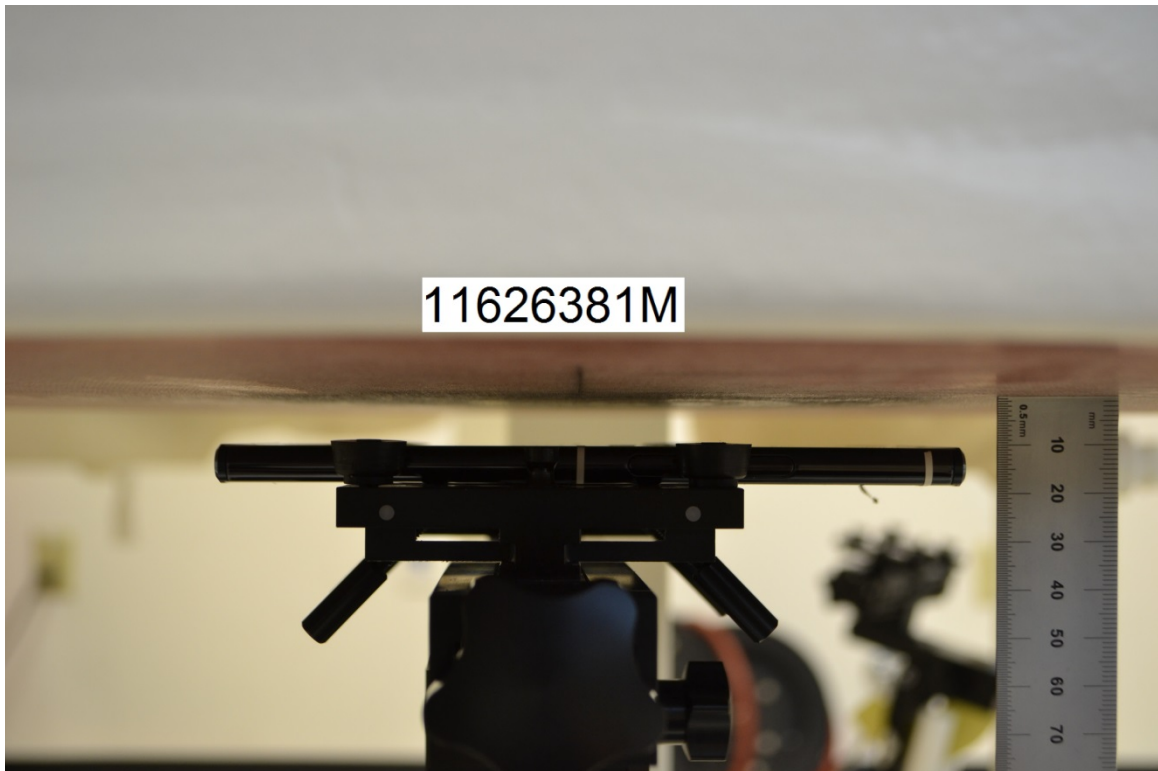


Front @15mm

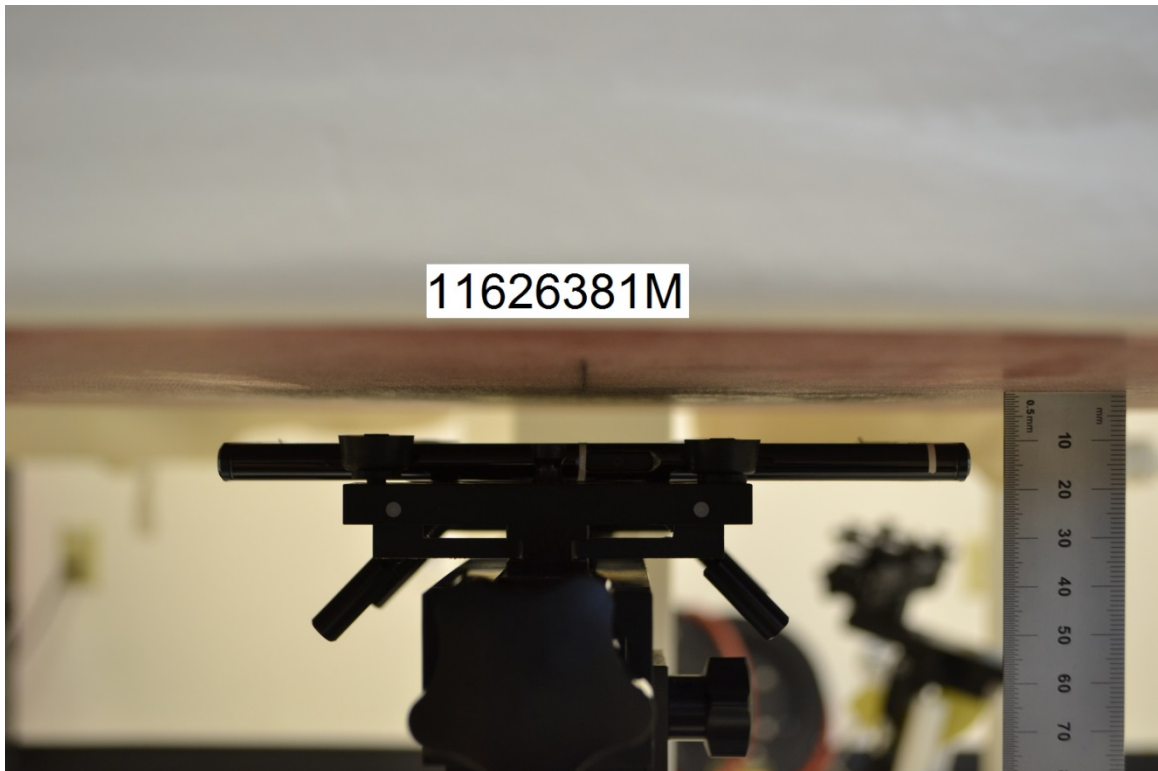


Hotspot Exposure Conditions

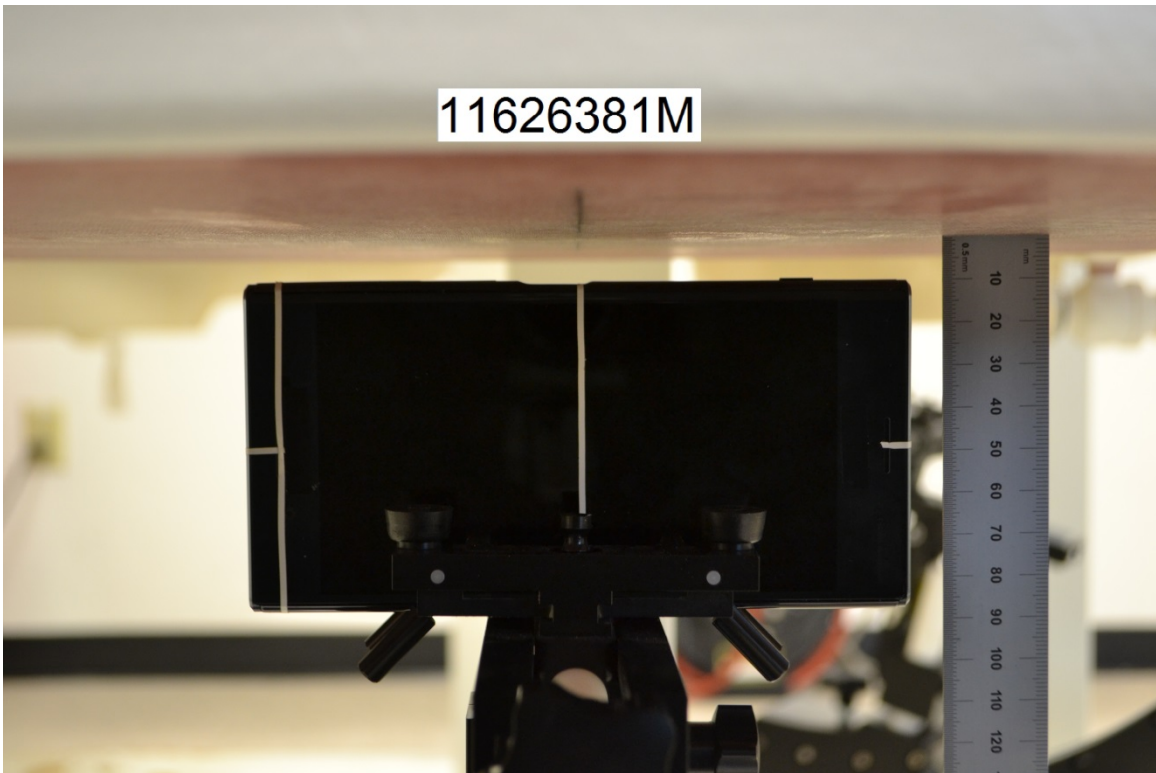
Rear @10mm



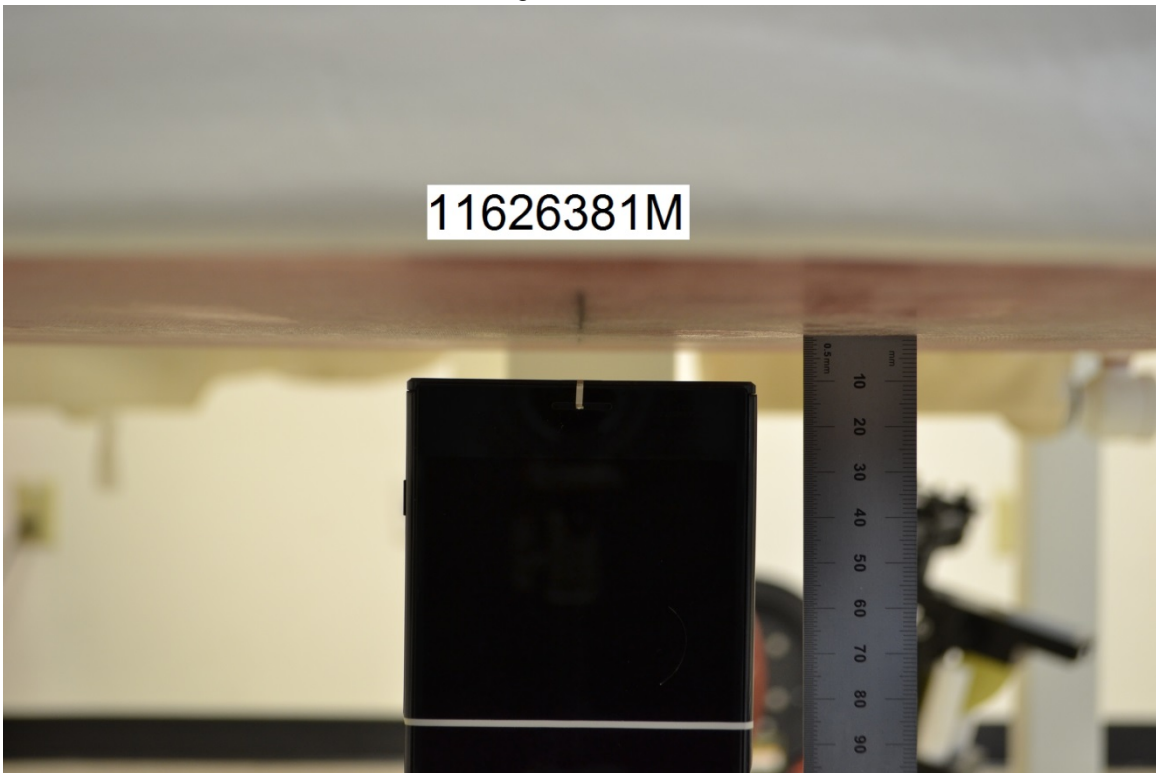
Front @10mm



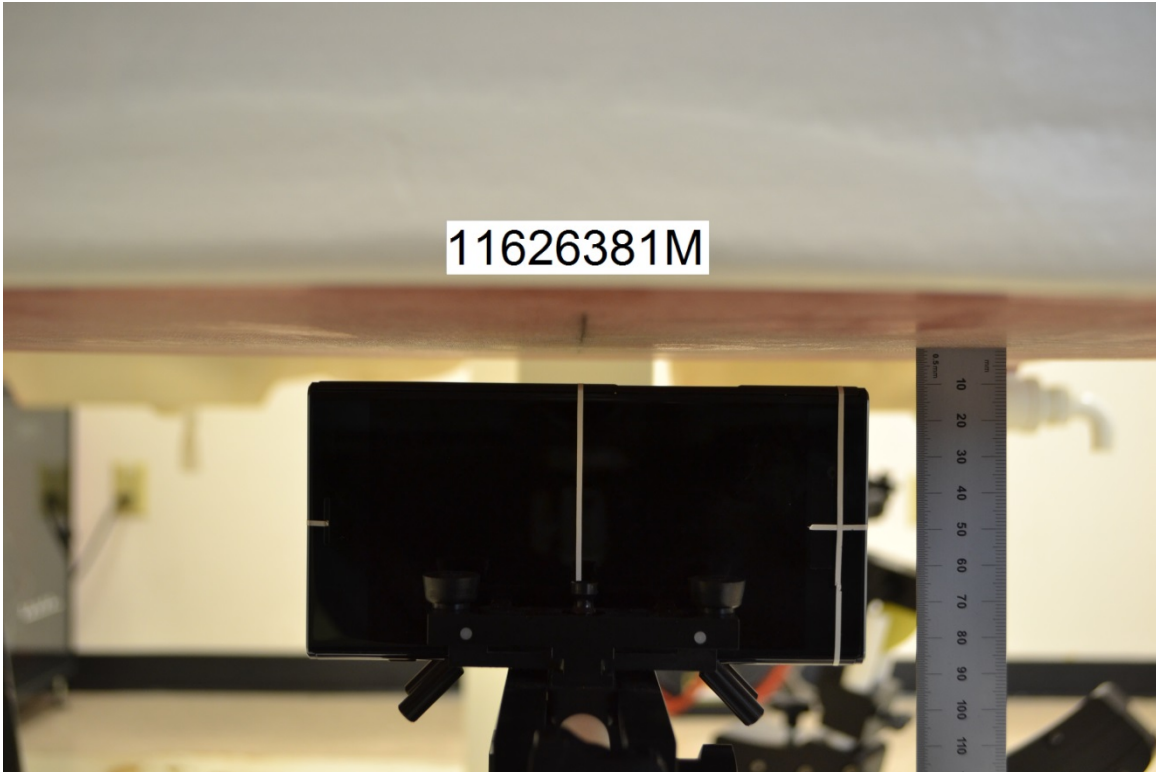
Edge 2 @10mm



Edge 3 @10mm



Edge 4 @10mm



Antenna Dimensions & Separation Distances

