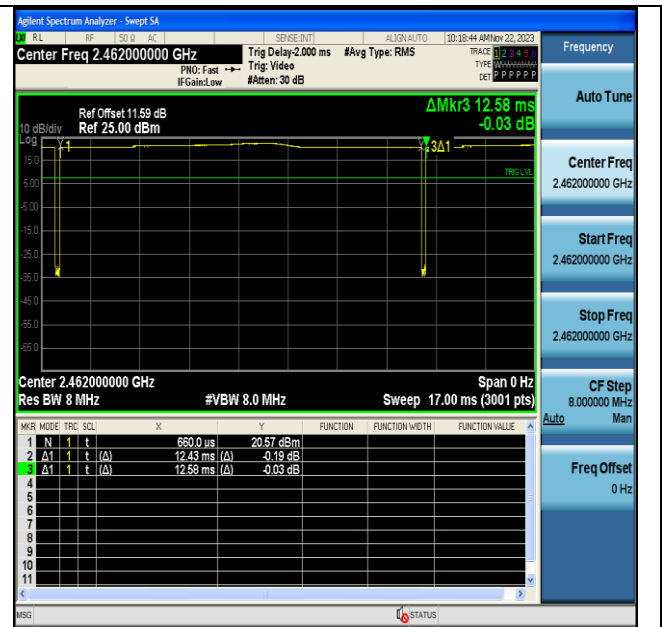
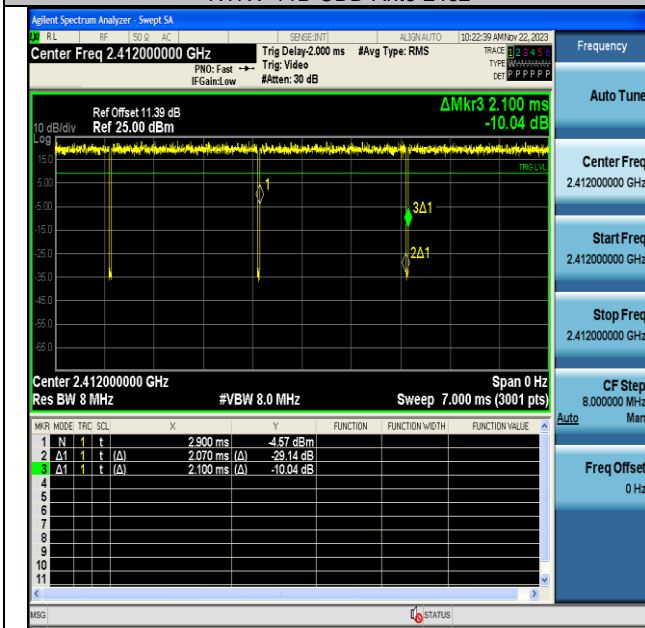


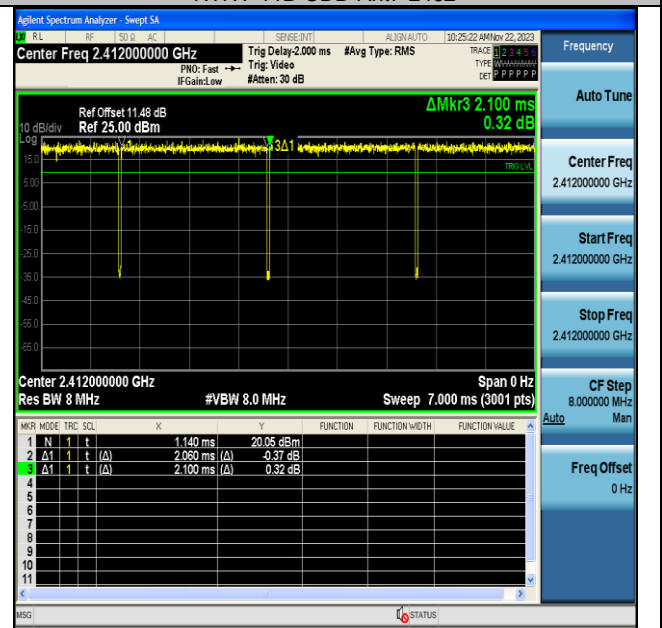
NTNV-11B-CDD-Ant6-2462



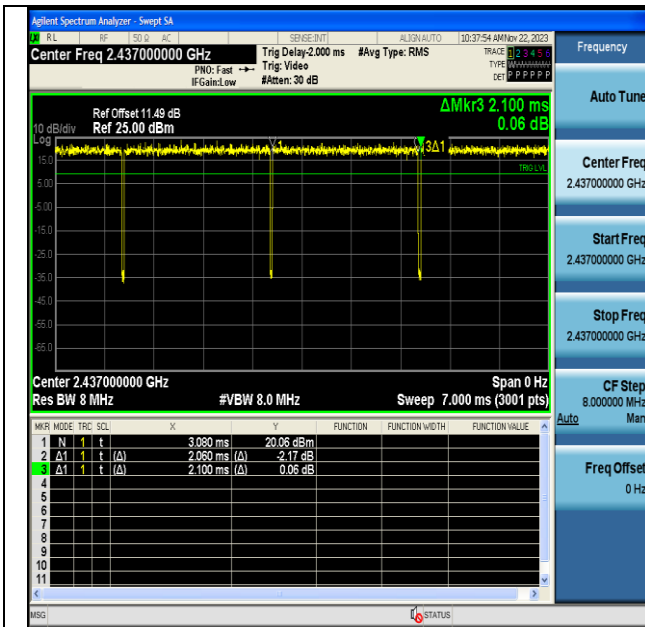
NTNV-11B-CDD-Ant7-2462



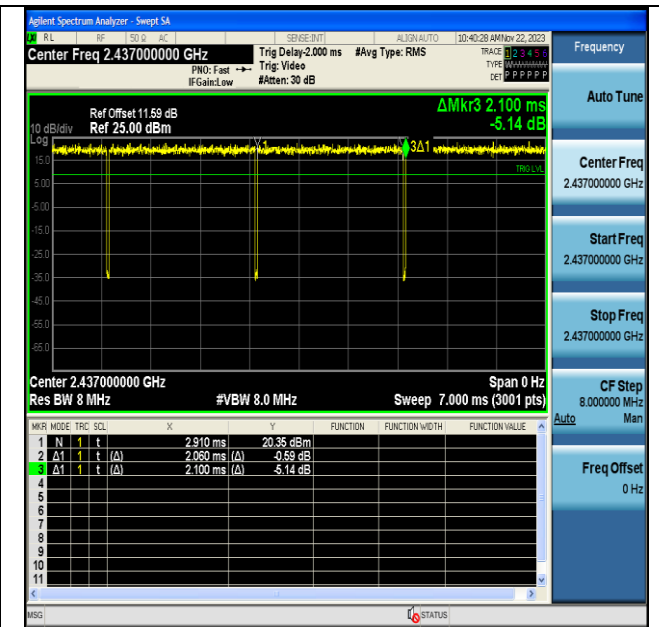
NTNV-11G-CDD-Ant6-2412



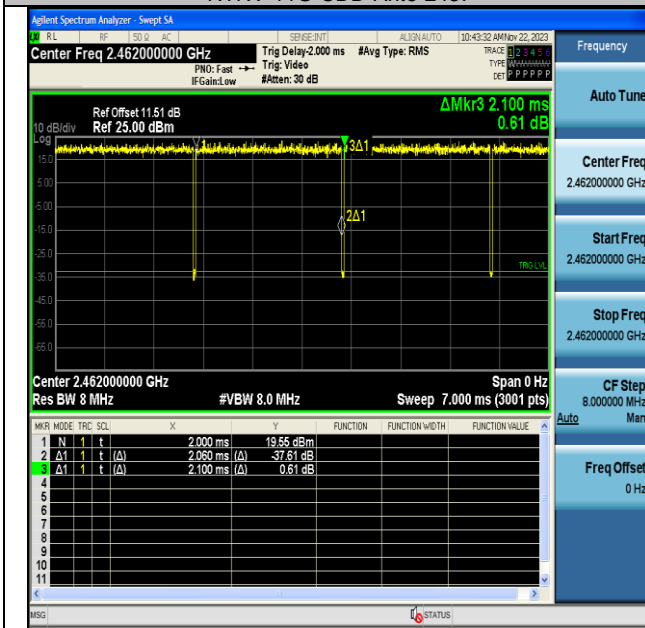
NTNV-11G-CDD-Ant7-2412



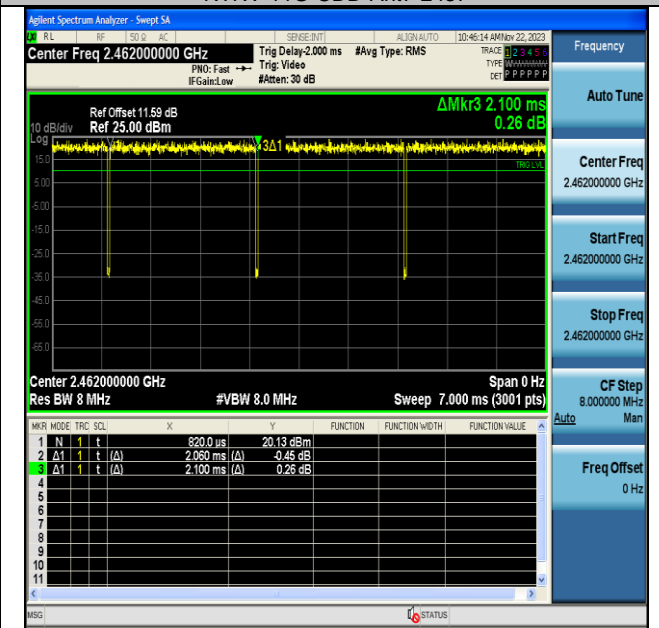
NTNV-11G-CDD-Ant6-2437



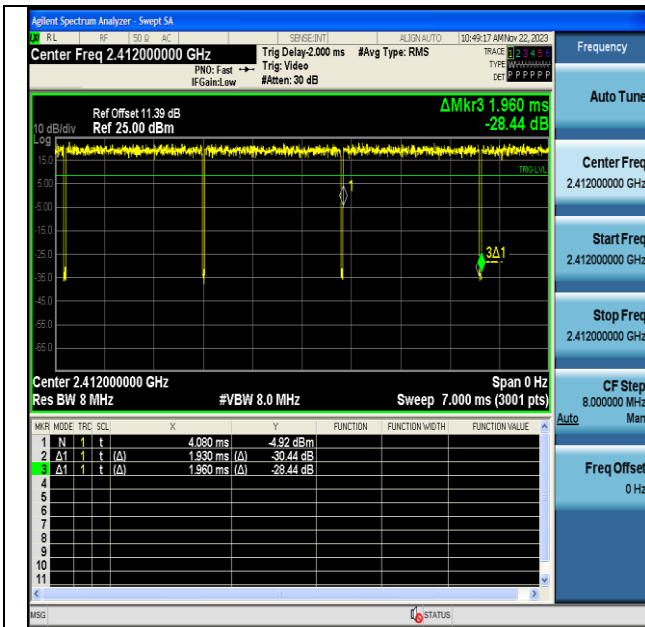
NTNV-11G-CDD-Ant7-2437



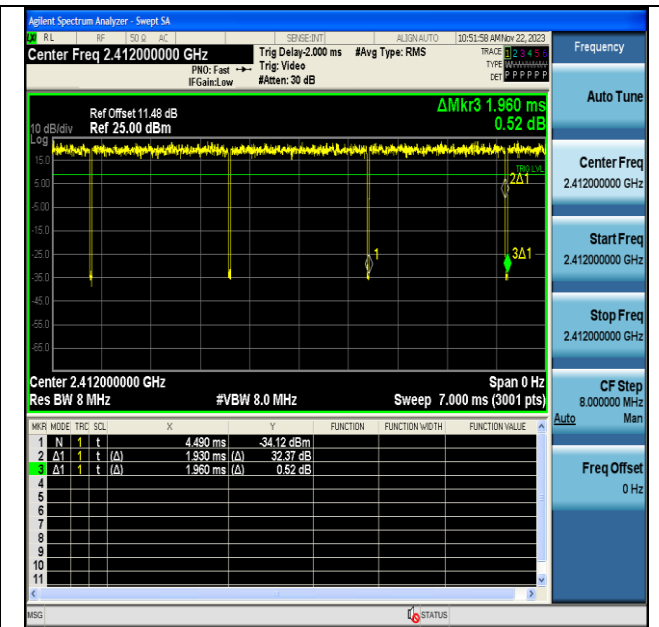
NTNV-11G-CDD-Ant6-2462



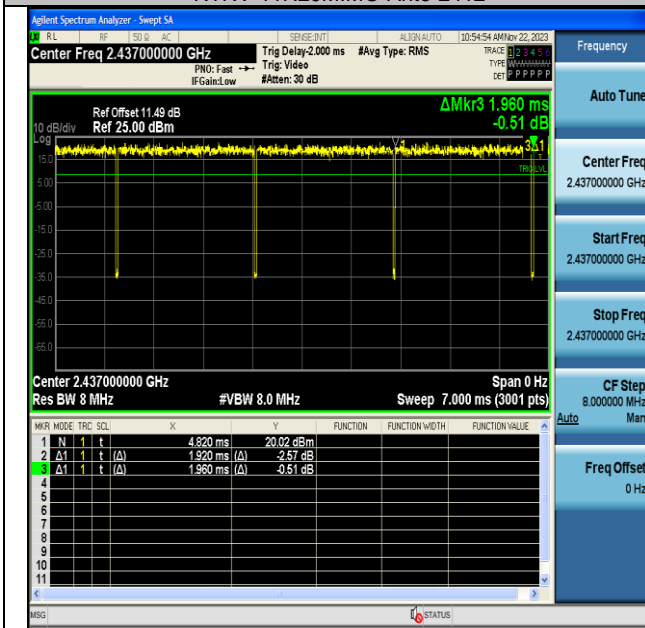
NTNV-11G-CDD-Ant7-2462



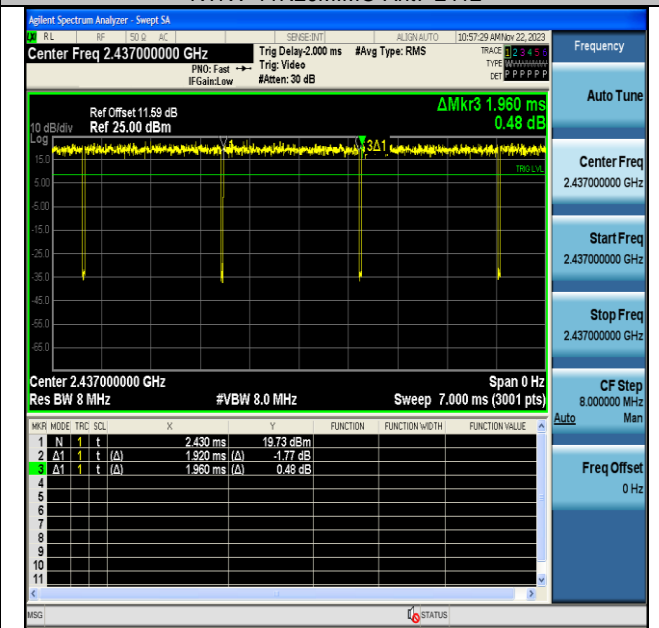
NTNV-11N20MIMO-Ant6-2412



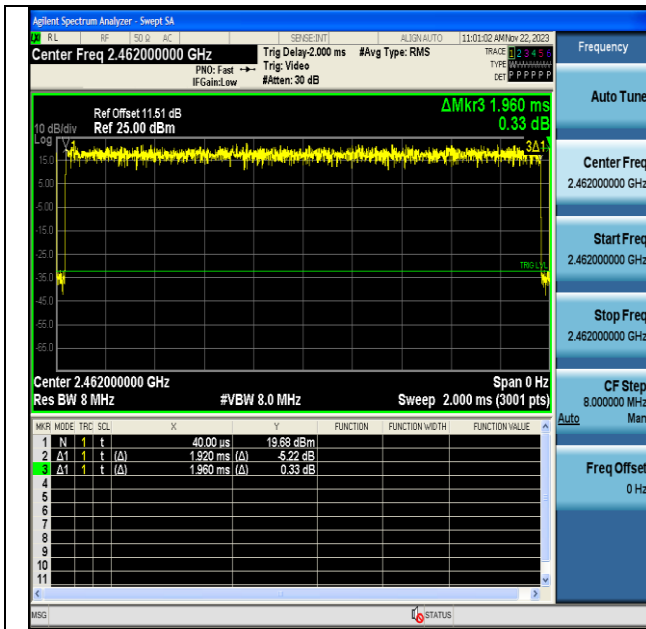
NTNV-11N20MIMO-Ant7-2412



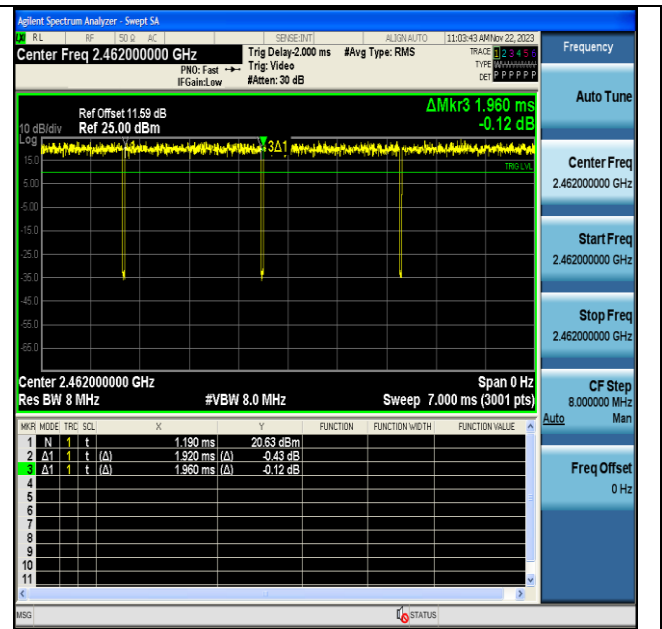
NTNV-11N20MIMO-Ant6-2437



NTNV-11N20MIMO-Ant7-2437



NTNV-11N20MIMO-Ant6-2462



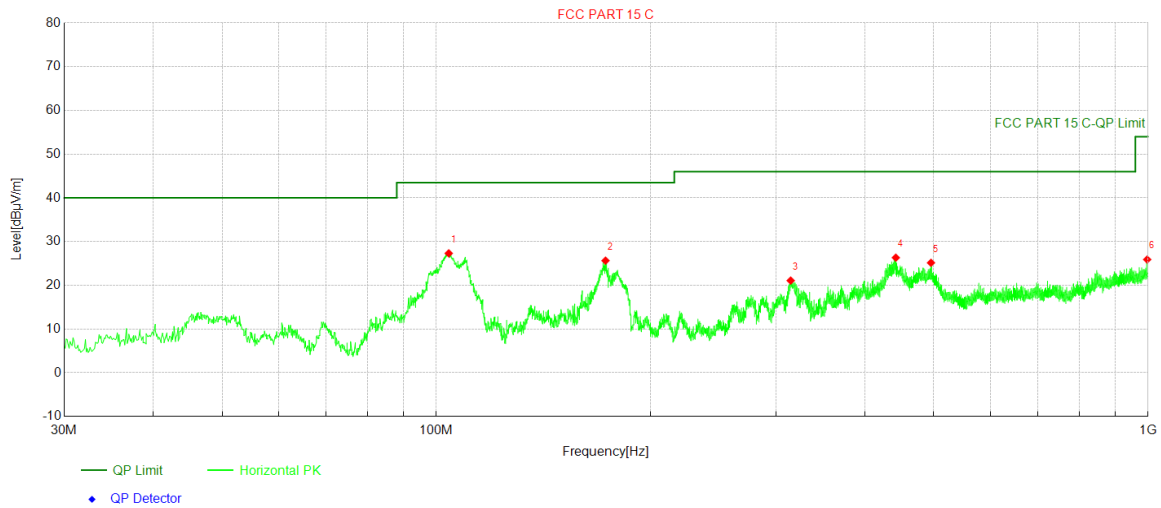
NTNV-11N20MIMO-Ant7-2462

Radiated Spurious Emissions Test Result

Below 1GHz

Project Information			
Mode:	2.4G WIFI	Voltage:	120V 60HZ
SN:	HQ63B1038C	Engineer:	欧树炎
Remark:	Polarity:X		
Test Standard: FCC PART 15 C			

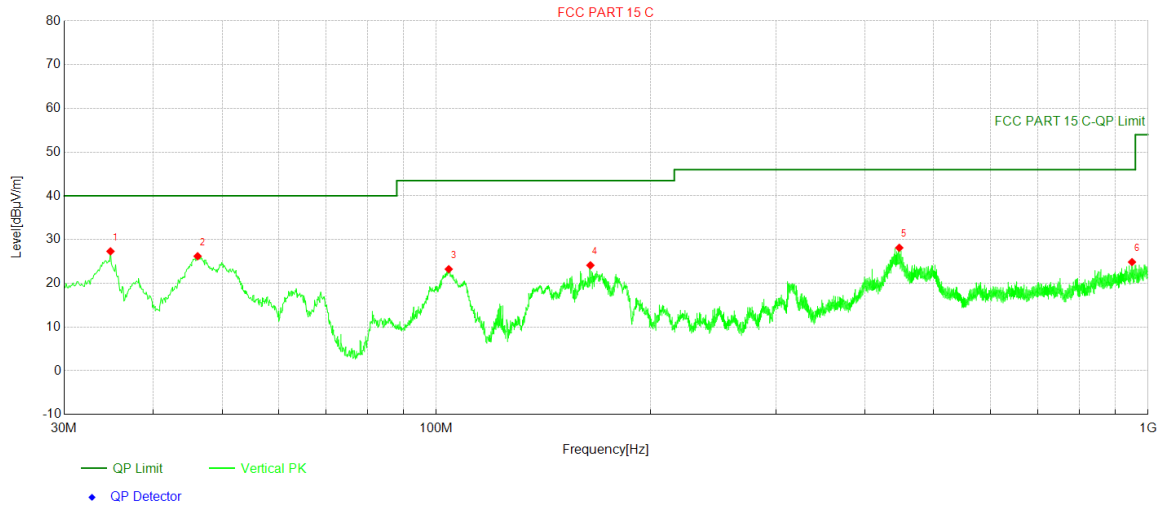
Test Graph



NO.	Freq. [MHz]	Reading [dBuV]	Factor [dB]	Level [dBμV/m]	Limit [dBμV/m]	Margin [dB]	Height [cm]	Angle [°]	Trace	Polarity	Verdict
1	104.108	57.17	-29.85	27.32	43.50	16.18	260	281	PK	Horizontal	PASS
2	172.881	55.72	-30.07	25.65	43.50	17.85	103	114	PK	Horizontal	PASS
3	314.695	45.94	-24.85	21.09	46.00	24.91	275	144	PK	Horizontal	PASS
4	442.25	41.09	-14.76	26.33	46.00	19.67	169	80	PK	Horizontal	PASS
5	495.503	39.37	-14.21	25.16	46.00	20.84	116	266	PK	Horizontal	PASS
6	997.284	37.63	-11.72	25.91	54.00	28.09	181	168	PK	Horizontal	PASS

Project Information			
Mode:	2.4G WIFI	Voltage:	120V 60HZ
SN:	HQ63B1038C	Engineer:	欧树炎
Remark:	Polarity:X		
Test Standard: FCC PART 15 C			

Test Graph

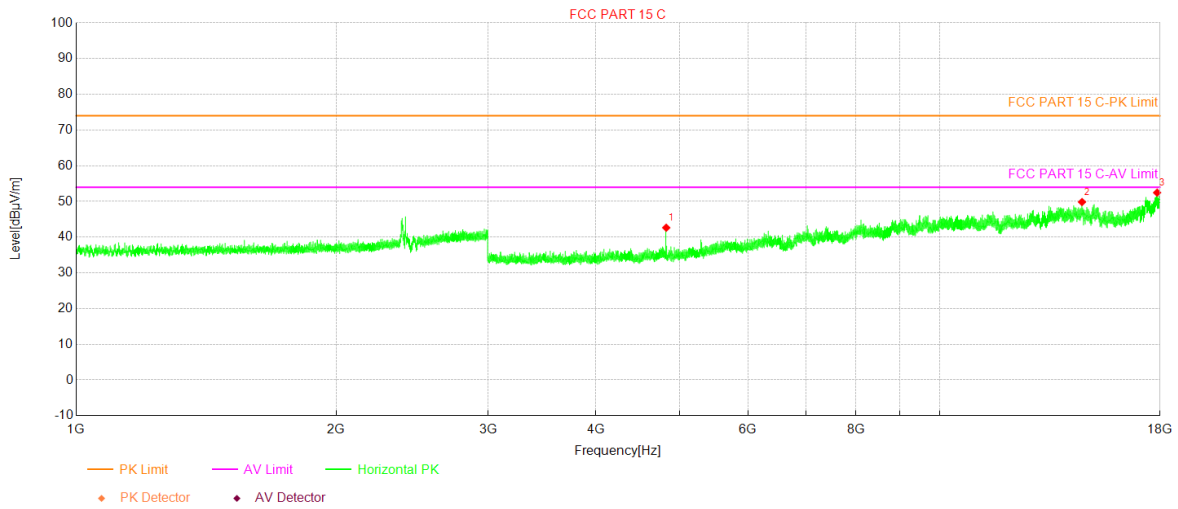


NO.	Freq. [MHz]	Reading [dBµV]	Factor [dB]	Level [dBµV/m]	Limit [dBµV/m]	Margin [dB]	Height [cm]	Angle [°]	Trace	Polarity	Verdict
1	34.85	58.18	-30.86	27.32	40.00	12.68	192	225	PK	Vertical	PASS
2	46.199	55.41	-29.21	26.20	40.00	13.80	287	195	PK	Vertical	PASS
3	104.108	52.82	-29.58	23.24	43.50	20.26	211	9	PK	Vertical	PASS
4	164.636	55.38	-31.26	24.12	43.50	19.38	115	261	PK	Vertical	PASS
5	447.197	43.14	-15.01	28.13	46.00	17.87	240	81	PK	Vertical	PASS
6	949.463	36.82	-11.95	24.87	46.00	21.13	168	290	PK	Vertical	PASS

Above 1GHz

Project Information			
Mode:	802.11 b	Band:	/
Bandwidth	20MHz	Channel	Low
SN:	HQ63B1038C	Engineer:	欧树炎
Remark:	Polarity:X		
Test Standard: FCC PART 15 C			

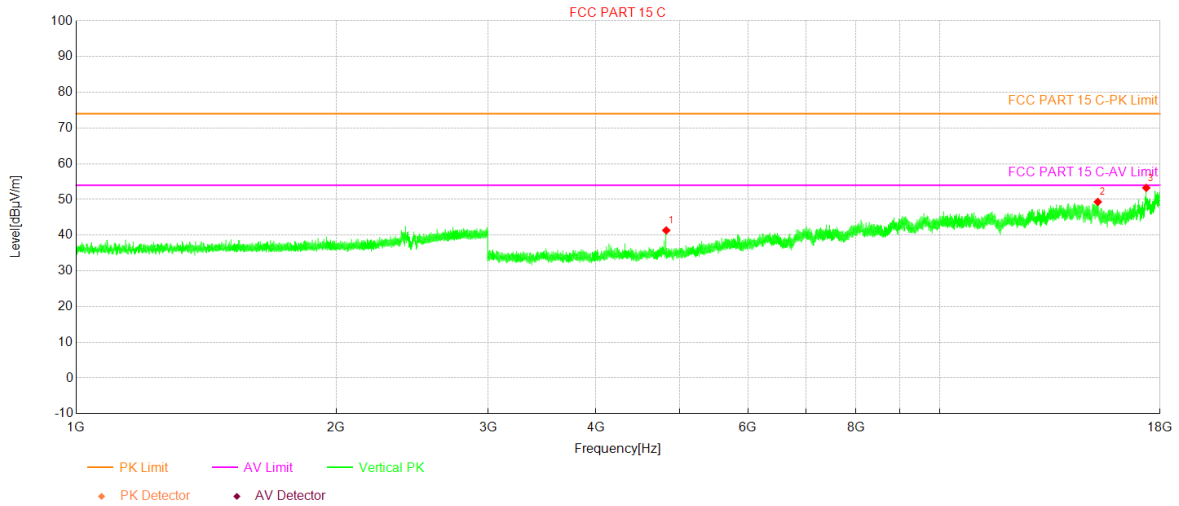
Test Graph



NO.	Freq. [MHz]	Reading [dBµV]	Factor [dB]	Level [dBµV/m]	Limit [dBµV/m]	Margin [dB]	Height [cm]	Angle [°]	Polarity
1	4824	50.49	-7.84	42.65	74.00	31.35	190	119	Horizontal
2	14618.5	40.67	9.18	49.85	74.00	24.15	279	288	Horizontal
3	17861	39.19	13.29	52.48	74.00	21.52	164	54	Horizontal

Project Information			
Mode:	802.11 b	Band:	/
Bandwidth	20MHz	Channel	Low
SN:	HQ63B1038C	Engineer:	欧树炎
Remark:	Polarity:X		
Test Standard: FCC PART 15 C			

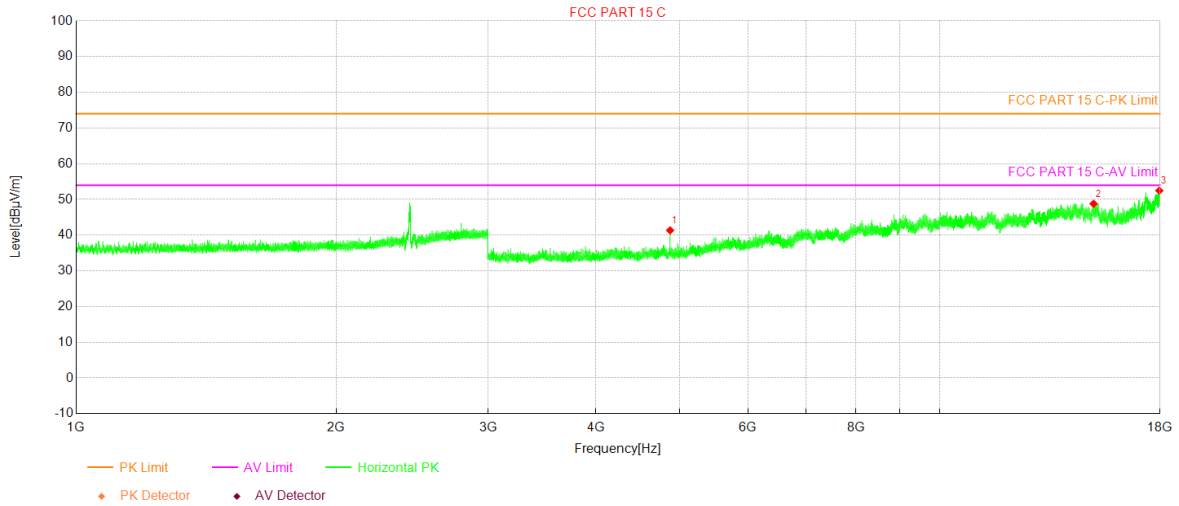
Test Graph



NO.	Freq. [MHz]	Reading [dBµV]	Factor [dB]	Level [dBµV/m]	Limit [dBµV/m]	Margin [dB]	Height [cm]	Angle [°]	Polarity
1	4824	49.19	-7.84	41.35	74.00	32.65	179	53	Vertical
2	15248	40.03	9.30	49.33	74.00	24.67	154	360	Vertical
3	17351.5	40.46	12.80	53.26	74.00	20.74	284	178	Vertical

Project Information			
Mode:	802.11 b	Band:	/
Bandwidth	20MHz	Channel	Mid
SN:	HQ63B1038C	Engineer:	欧树炎
Remark:	Polarity:X		
Test Standard: FCC PART 15 C			

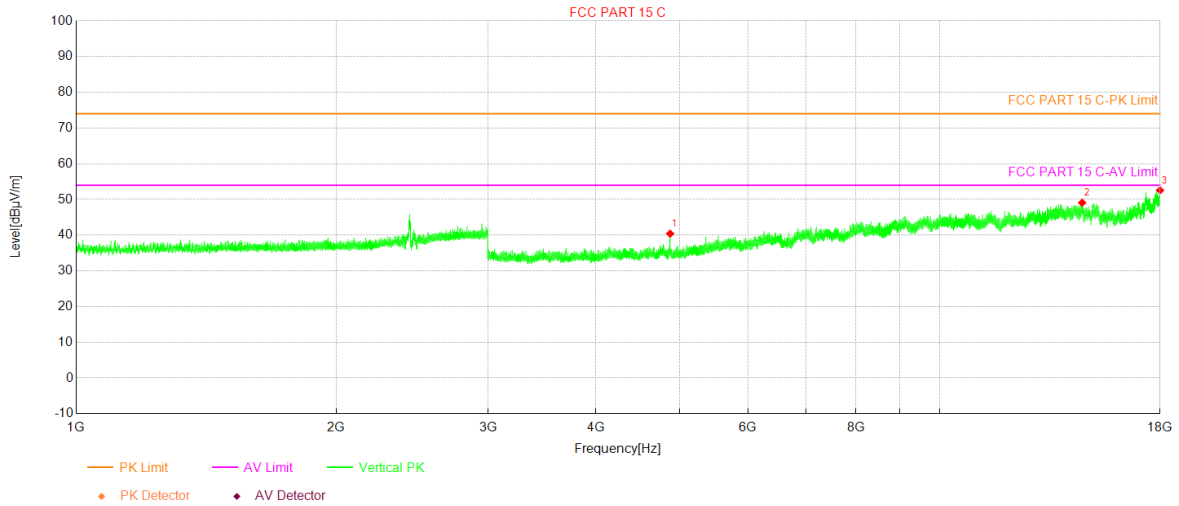
Test Graph



NO.	Freq. [MHz]	Reading [dBµV]	Factor [dB]	Level [dBµV/m]	Limit [dBµV/m]	Margin [dB]	Height [cm]	Angle [°]	Polarity
1	4874	49.44	-8.08	41.36	74.00	32.64	150	157	Horizontal
2	15076.5	39.82	8.98	48.80	74.00	25.20	150	353	Horizontal
3	17965.5	39.48	12.99	52.47	74.00	21.53	150	157	Horizontal

Project Information			
Mode:	802.11 b	Band:	/
Bandwidth	20MHz	Channel	Mid
SN:	HQ63B1038C	Engineer:	欧树炎
Remark:	Polarity:X		
Test Standard: FCC PART 15 C			

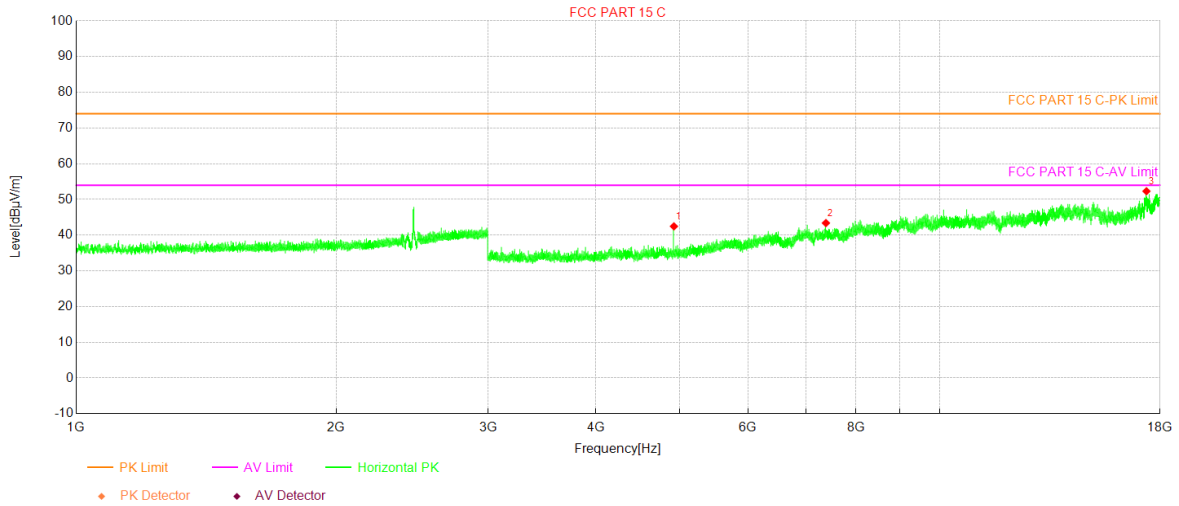
Test Graph



NO.	Freq. [MHz]	Reading [dBµV]	Factor [dB]	Level [dBµV/m]	Limit [dBµV/m]	Margin [dB]	Height [cm]	Angle [°]	Polarity
1	4874	48.50	-8.08	40.42	74.00	33.58	195	156	Vertical
2	14622.5	39.82	9.27	49.09	74.00	24.91	270	186	Vertical
3	17999	39.12	13.44	52.56	74.00	21.44	187	281	Vertical

Project Information			
Mode:	802.11 b	Band:	/
Bandwidth	20MHz	Channel	High
SN:	HQ63B1038C	Engineer:	欧树炎
Remark:	Polarity:X		
Test Standard: FCC PART 15 C			

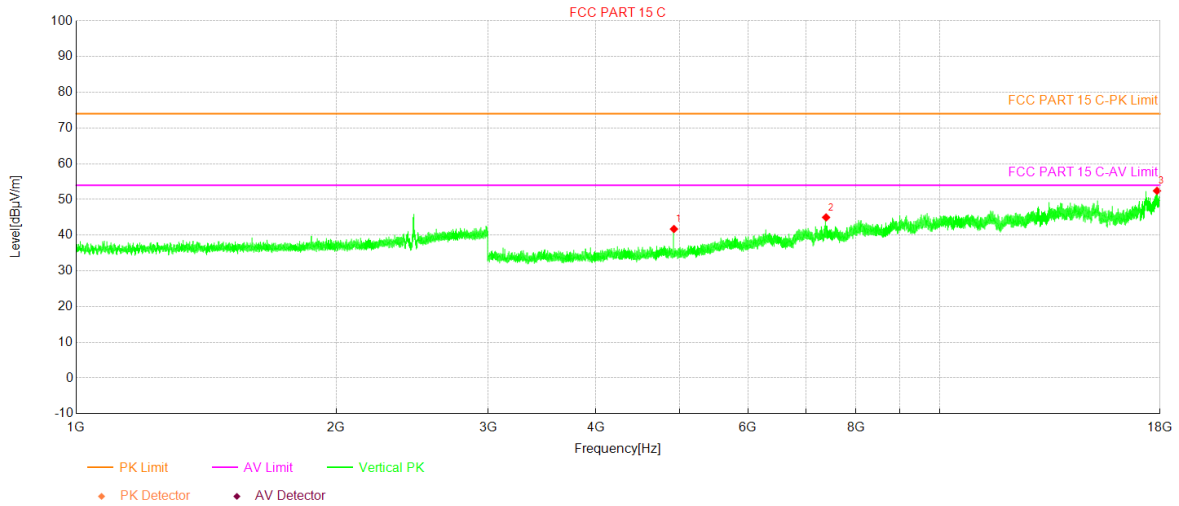
Test Graph



NO.	Freq. [MHz]	Reading [dBµV]	Factor [dB]	Level [dBµV/m]	Limit [dBµV/m]	Margin [dB]	Height [cm]	Angle [°]	Polarity
1	4924	50.23	-7.76	42.47	74.00	31.53	133	119	Horizontal
2	7384.5	44.58	-1.18	43.40	74.00	30.60	106	344	Horizontal
3	17359.5	39.83	12.49	52.32	74.00	21.68	232	227	Horizontal

Project Information			
Mode:	802.11 b	Band:	/
Bandwidth	20MHz	Channel	High
SN:	HQ63B1038C	Engineer:	欧树炎
Remark:	Polarity:X		
Test Standard: FCC PART 15 C			

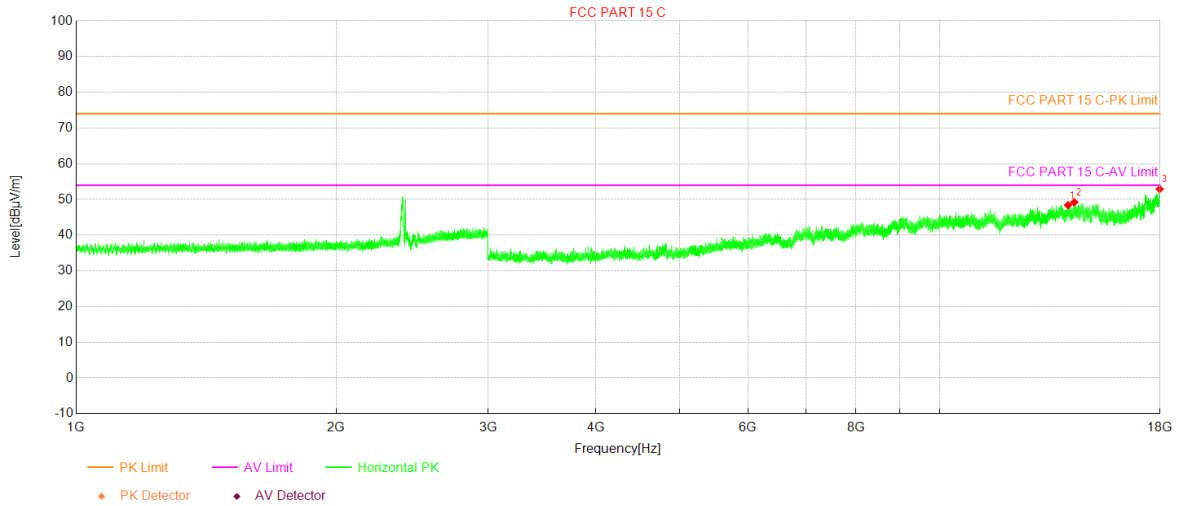
Test Graph



NO.	Freq. [MHz]	Reading [dBµV]	Factor [dB]	Level [dBµV/m]	Limit [dBµV/m]	Margin [dB]	Height [cm]	Angle [°]	Polarity
1	4924	49.49	-7.76	41.73	74.00	32.27	149	164	Vertical
2	7388	46.12	-1.14	44.98	74.00	29.02	278	120	Vertical
3	17855	39.06	13.36	52.42	74.00	21.58	139	3	Vertical

Project Information			
Mode:	802.11 g	Band:	/
Bandwidth	20MHz	Channel	Low
SN:	HQ63B1038C	Engineer:	欧树炎
Remark:	Polarity:X		
Test Standard: FCC PART 15 C			

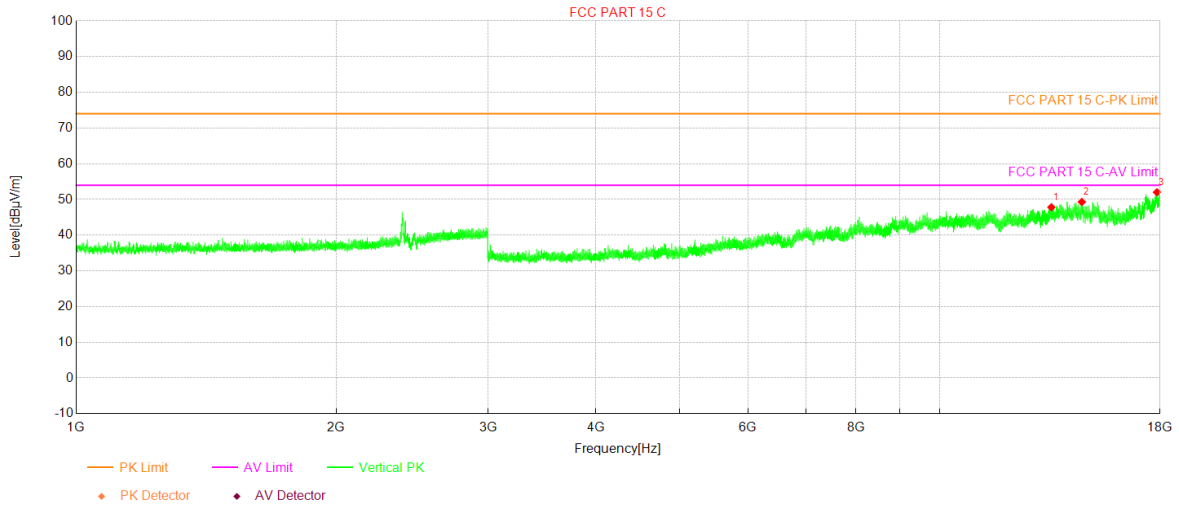
Test Graph



NO.	Freq. [MHz]	Reading [dBµV]	Factor [dB]	Level [dBµV/m]	Limit [dBµV/m]	Margin [dB]	Height [cm]	Angle [°]	Polarity
1	14084	40.31	8.08	48.39	74.00	25.61	165	244	Horizontal
2	14319.5	40.63	8.60	49.23	74.00	24.77	135	302	Horizontal
3	17981	39.71	13.19	52.90	74.00	21.10	246	353	Horizontal

Project Information			
Mode:	802.11 g	Band:	/
Bandwidth	20MHz	Channel	Low
SN:	HQ63B1038C	Engineer:	欧树炎
Remark:	Polarity:X		
Test Standard: FCC PART 15 C			

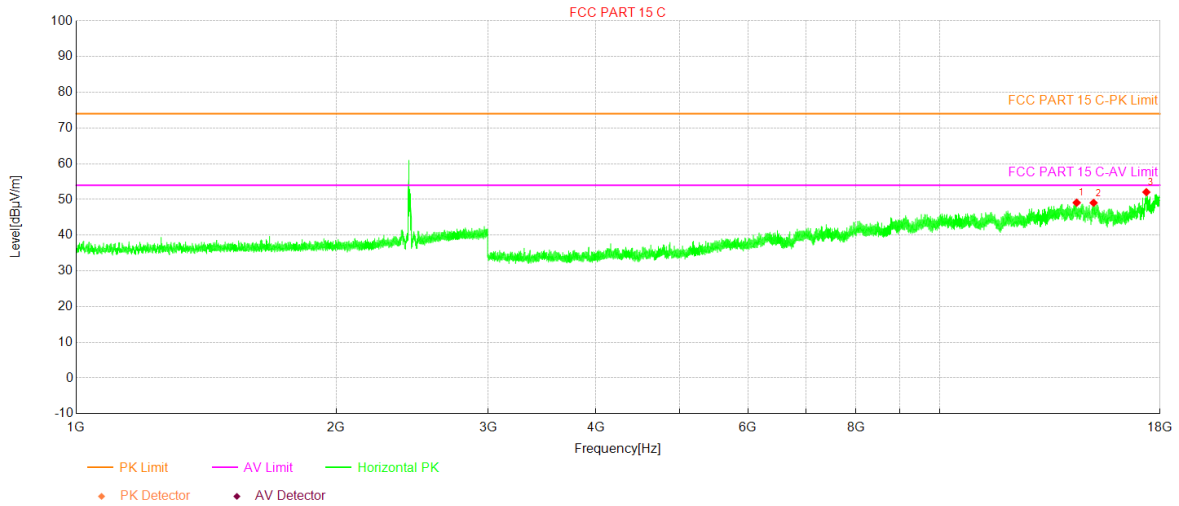
Test Graph



NO.	Freq. [MHz]	Reading [dBµV]	Factor [dB]	Level [dBµV/m]	Limit [dBµV/m]	Margin [dB]	Height [cm]	Angle [°]	Polarity
1	13472	40.94	6.89	47.83	74.00	26.17	139	357	Vertical
2	14611.5	40.30	9.01	49.31	74.00	24.69	166	222	Vertical
3	17851.5	38.63	13.40	52.03	74.00	21.97	228	98	Vertical

Project Information			
Mode:	802.11 g	Band:	/
Bandwidth	20MHz	Channel	Mid
SN:	HQ63B1038C	Engineer:	欧树炎
Remark:	Polarity:X		
Test Standard: FCC PART 15 C			

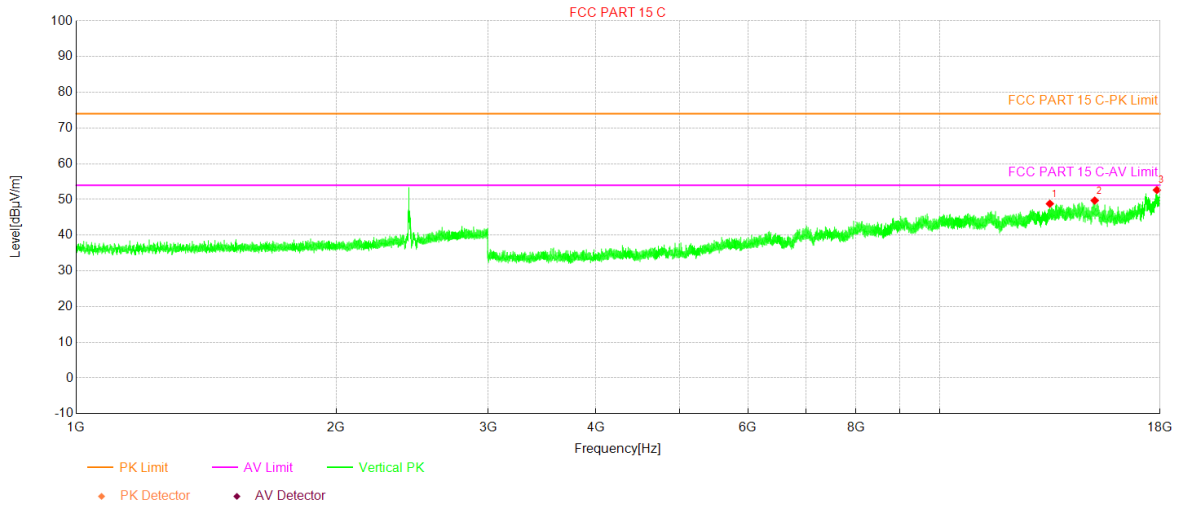
Test Graph



NO.	Freq. [MHz]	Reading [dBµV]	Factor [dB]	Level [dBµV/m]	Limit [dBµV/m]	Margin [dB]	Height [cm]	Angle [°]	Polarity
1	14413	41.02	8.08	49.10	74.00	24.90	120	10	Horizontal
2	15078	40.07	8.99	49.06	74.00	24.94	207	18	Horizontal
3	17356	39.43	12.63	52.06	74.00	21.94	253	228	Horizontal

Project Information			
Mode:	802.11 g	Band:	/
Bandwidth	20MHz	Channel	Mid
SN:	HQ63B1038C	Engineer:	欧树炎
Remark:	Polarity:X		
Test Standard: FCC PART 15 C			

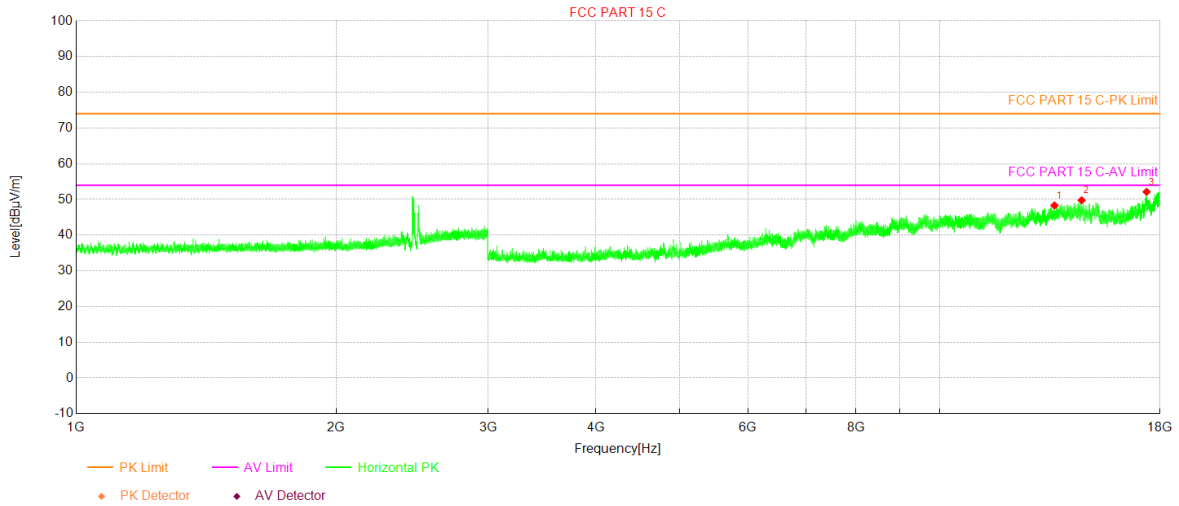
Test Graph



NO.	Freq. [MHz]	Reading [dBµV]	Factor [dB]	Level [dBµV/m]	Limit [dBµV/m]	Margin [dB]	Height [cm]	Angle [°]	Polarity
1	13417	41.77	7.04	48.81	74.00	25.19	229	164	Vertical
2	15122.5	40.95	8.74	49.69	74.00	24.31	163	127	Vertical
3	17848.5	39.24	13.40	52.64	74.00	21.36	217	62	Vertical

Project Information			
Mode:	802.11 g	Band:	/
Bandwidth	20MHz	Channel	High
SN:	HQ63B1038C	Engineer:	欧树炎
Remark:	Polarity:X		
Test Standard: FCC PART 15 C			

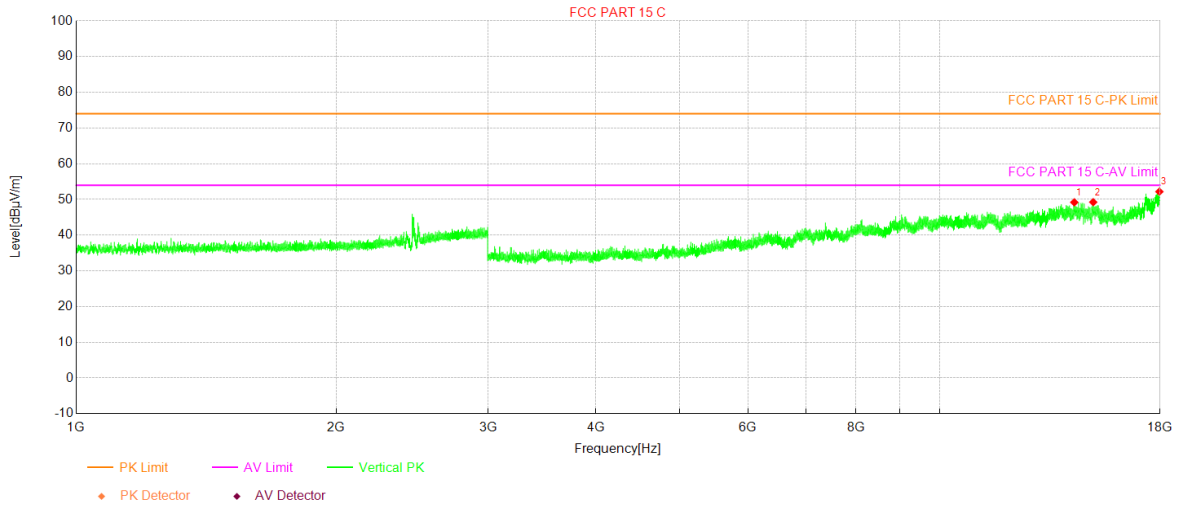
Test Graph



NO.	Freq. [MHz]	Reading [dBµV]	Factor [dB]	Level [dBµV/m]	Limit [dBµV/m]	Margin [dB]	Height [cm]	Angle [°]	Polarity
1	13583.5	41.38	6.95	48.33	74.00	25.67	255	302	Horizontal
2	14604	40.95	8.83	49.78	74.00	24.22	197	192	Horizontal
3	17366.5	39.91	12.22	52.13	74.00	21.87	157	3	Horizontal

Project Information			
Mode:	802.11 g	Band:	/
Bandwidth	20MHz	Channel	High
SN:	HQ63B1038C	Engineer:	欧树炎
Remark:	Polarity:X		
Test Standard: FCC PART 15 C			

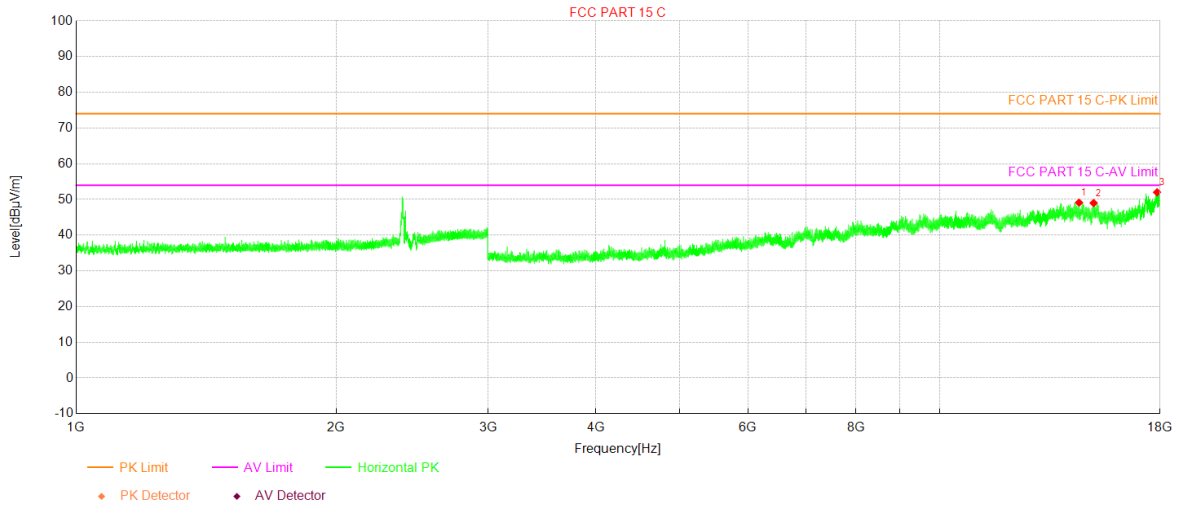
Test Graph



NO.	Freq. [MHz]	Reading [dBµV]	Factor [dB]	Level [dBµV/m]	Limit [dBµV/m]	Margin [dB]	Height [cm]	Angle [°]	Polarity
1	14320.5	40.58	8.62	49.20	74.00	24.80	166	252	Vertical
2	15062.5	40.32	8.93	49.25	74.00	24.75	179	310	Vertical
3	17970	39.14	13.05	52.19	74.00	21.81	257	25	Vertical

Project Information			
Mode:	802.11 n20	Band:	/
Bandwidth	20MHz	Channel	Low
SN:	HQ63B1038C	Engineer:	欧树炎
Remark:	Polarity:X		
Test Standard: FCC PART 15 C			

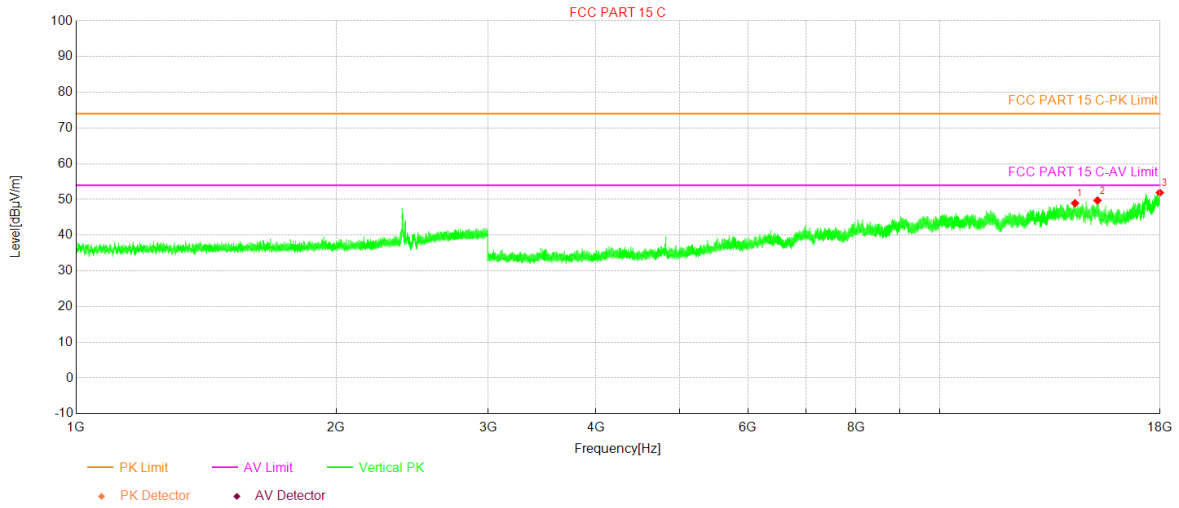
Test Graph



NO.	Freq. [MHz]	Reading [dBµV]	Factor [dB]	Level [dBµV/m]	Limit [dBµV/m]	Margin [dB]	Height [cm]	Angle [°]	Polarity
1	14504.5	40.92	8.19	49.11	74.00	24.89	238	83	Horizontal
2	15080	40.02	8.99	49.01	74.00	24.99	153	353	Horizontal
3	17858	38.68	13.33	52.01	74.00	21.99	218	222	Horizontal

Project Information			
Mode:	802.11 n20	Band:	/
Bandwidth	20MHz	Channel	Low
SN:	HQ63B1038C	Engineer:	欧树炎
Remark:	Polarity:X		
Test Standard: FCC PART 15 C			

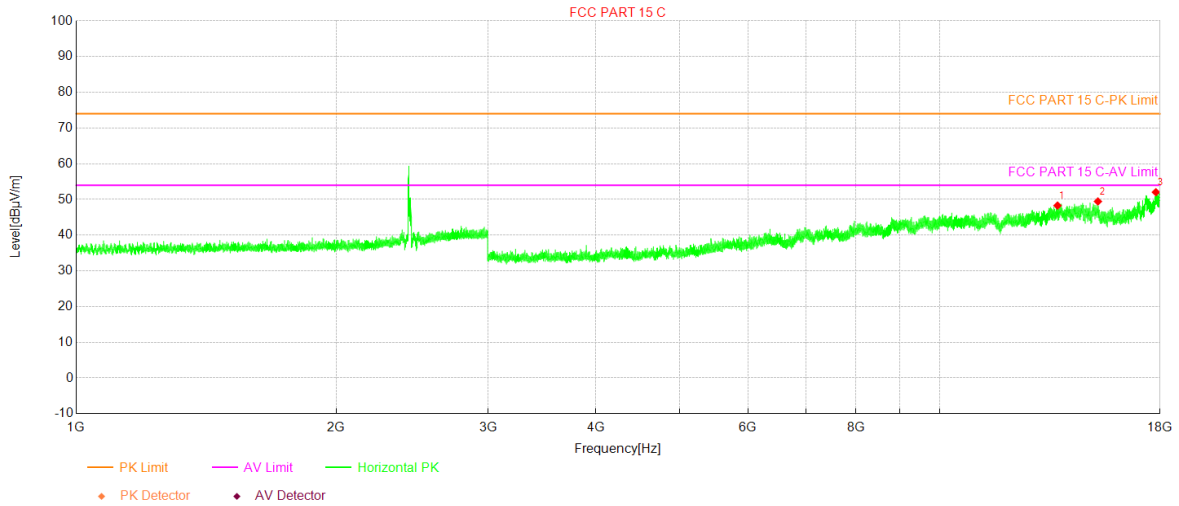
Test Graph



NO.	Freq. [MHz]	Reading [dBµV]	Factor [dB]	Level [dBµV/m]	Limit [dBµV/m]	Margin [dB]	Height [cm]	Angle [°]	Polarity
1	14348.5	39.64	9.31	48.95	74.00	25.05	172	288	Vertical
2	15235	40.72	9.00	49.72	74.00	24.28	255	357	Vertical
3	17991	38.56	13.33	51.89	74.00	22.11	197	185	Vertical

Project Information			
Mode:	802.11 n20	Band:	/
Bandwidth	20MHz	Channel	Mid
SN:	HQ63B1038C	Engineer:	欧树炎
Remark:	Polarity:X		
Test Standard: FCC PART 15 C			

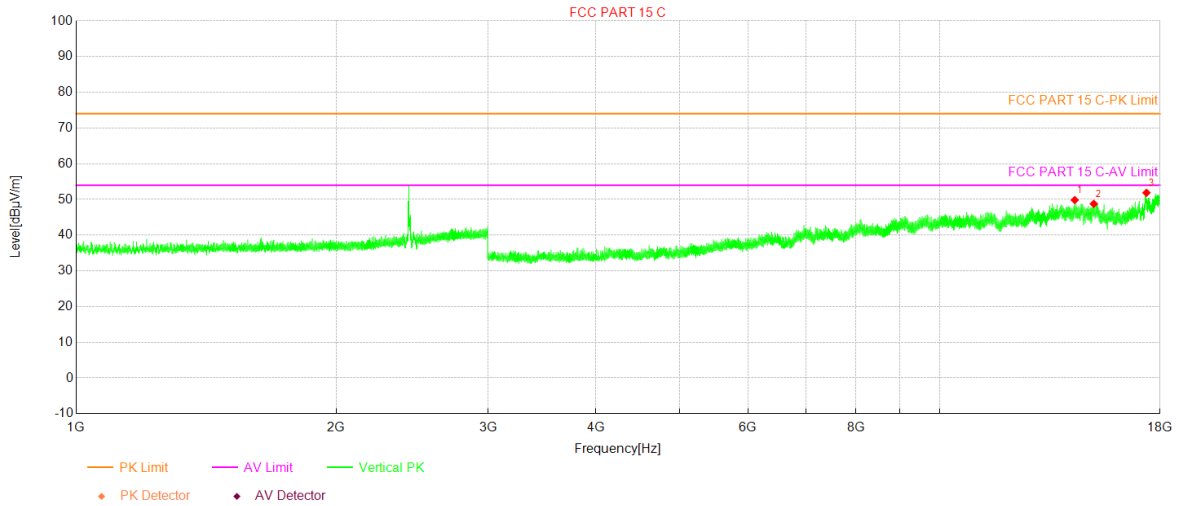
Test Graph



NO.	Freq. [MHz]	Reading [dBµV]	Factor [dB]	Level [dBµV/m]	Limit [dBµV/m]	Margin [dB]	Height [cm]	Angle [°]	Polarity
1	13695	40.52	7.77	48.29	74.00	25.71	211	84	Horizontal
2	15251.5	40.12	9.33	49.45	74.00	24.55	148	112	Horizontal
3	17801	39.33	12.70	52.03	74.00	21.97	185	236	Horizontal

Project Information			
Mode:	802.11 n20	Band:	/
Bandwidth	20MHz	Channel	Mid
SN:	HQ63B1038C	Engineer:	欧树炎
Remark:	Polarity:X		
Test Standard: FCC PART 15 C			

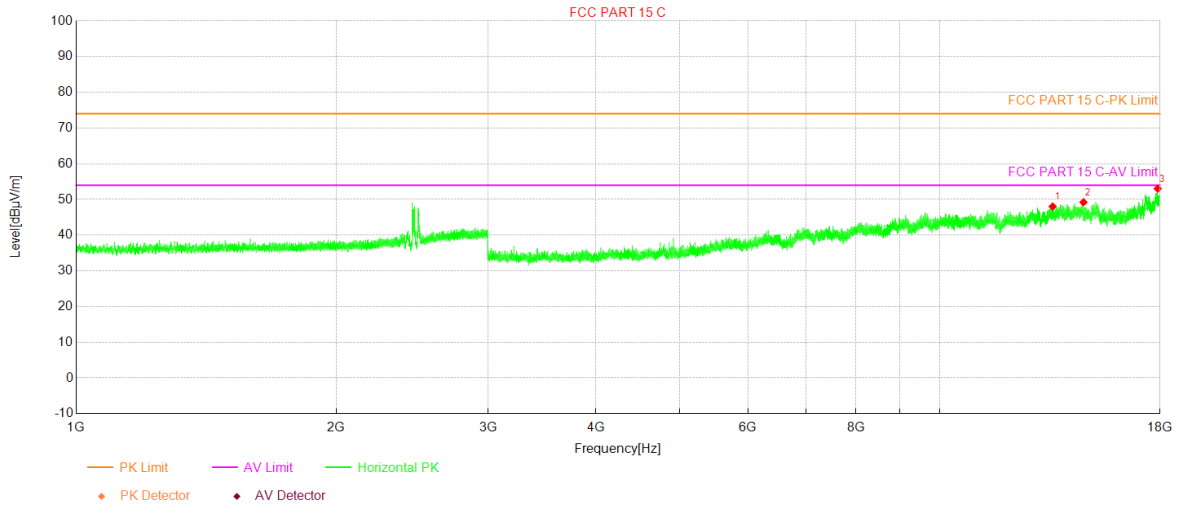
Test Graph



NO.	Freq. [MHz]	Reading [dBµV]	Factor [dB]	Level [dBµV/m]	Limit [dBµV/m]	Margin [dB]	Height [cm]	Angle [°]	Polarity
1	14338.5	40.78	9.07	49.85	74.00	24.15	142	10	Vertical
2	15085.5	39.76	9.01	48.77	74.00	25.23	160	207	Vertical
3	17360.5	39.43	12.45	51.88	74.00	22.12	277	184	Vertical

Project Information			
Mode:	802.11 n20	Band:	/
Bandwidth	20MHz	Channel	High
SN:	HQ63B1038C	Engineer:	欧树炎
Remark:	Polarity:X		
Test Standard: FCC PART 15 C			

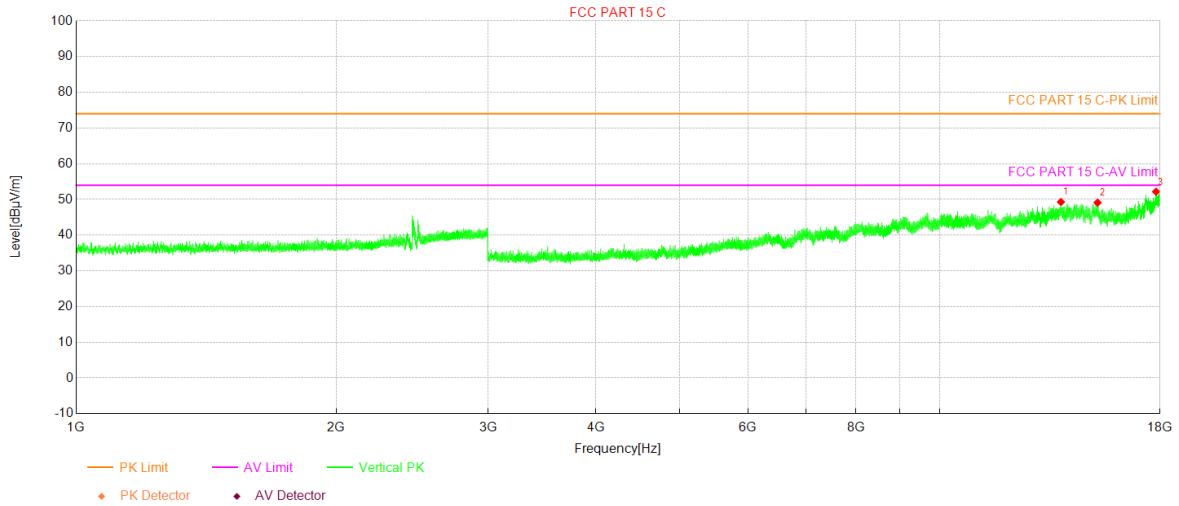
Test Graph



NO.	Freq. [MHz]	Reading [dBµV]	Factor [dB]	Level [dBµV/m]	Limit [dBµV/m]	Margin [dB]	Height [cm]	Angle [°]	Polarity
1	13519.5	41.27	6.76	48.03	74.00	25.97	194	113	Horizontal
2	14676.5	40.03	9.19	49.22	74.00	24.78	179	224	Horizontal
3	17890.5	40.10	12.94	53.04	74.00	20.96	206	238	Horizontal

Project Information			
Mode:	802.11 n20	Band:	/
Bandwidth	20MHz	Channel	High
SN:	HQ63B1038C	Engineer:	欧树炎
Remark:	Polarity:X		
Test Standard: FCC PART 15 C			

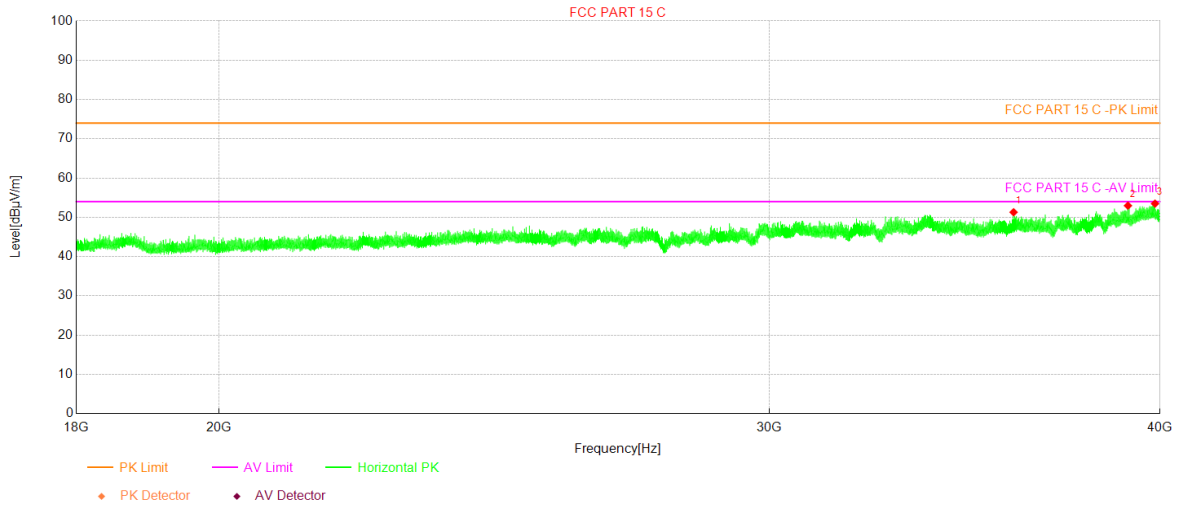
Test Graph



NO.	Freq. [MHz]	Reading [dBµV]	Factor [dB]	Level [dBµV/m]	Limit [dBµV/m]	Margin [dB]	Height [cm]	Angle [°]	Polarity
1	13820	41.05	8.25	49.30	74.00	24.70	218	274	Vertical
2	15235	40.12	9.00	49.12	74.00	24.88	185	326	Vertical
3	17809	39.35	12.82	52.17	74.00	21.83	224	32	Vertical

Project Information			
Mode:	802.11 b	Band:	/
Bandwidth	20MHz	Channel	Low
SN:	HQ63B10377	Engineer:	欧树炎
Remark:	Polarity: X		
Test Standard: FCC PART 15 C			

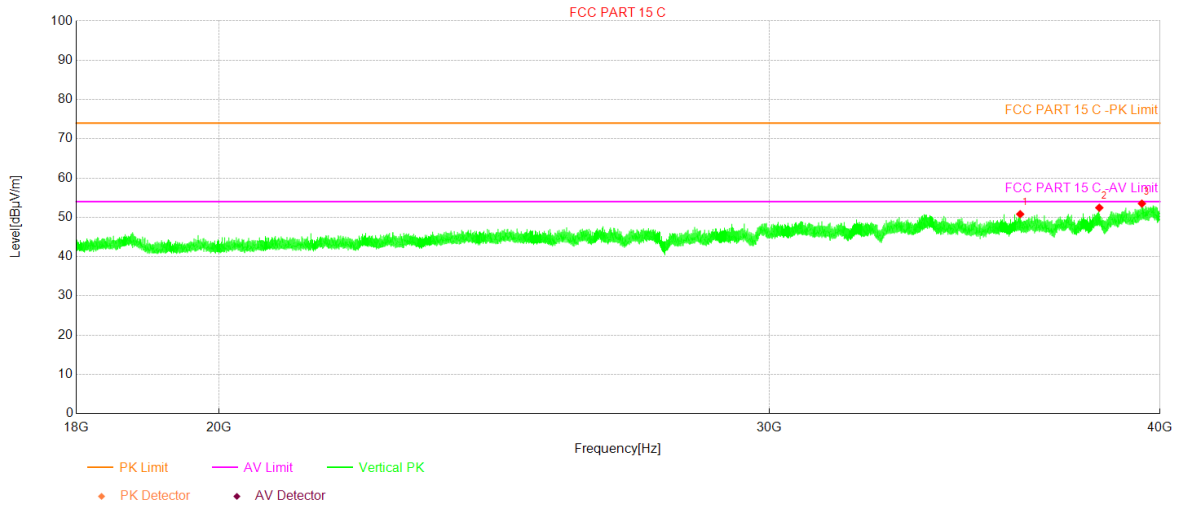
Test Graph



NO.	Freq. [MHz]	Reading [dBµV]	Factor [dB]	Level [dBµV/m]	Limit [dBµV/m]	Margin [dB]	Height [cm]	Angle [°]	Polarity
1	35909.05	50.93	0.37	51.30	74.00	22.70	156	345	Horizontal
2	39065.35	49.68	3.29	52.97	74.00	21.03	131	40	Horizontal
3	39853.3	49.76	3.73	53.49	74.00	20.51	245	148	Horizontal

Project Information			
Mode:	802.11 b	Band:	/
Bandwidth	20MHz	Channel	Low
SN:	HQ63B10377	Engineer:	欧树炎
Remark:	Polarity: X		
Test Standard: FCC PART 15 C			

Test Graph

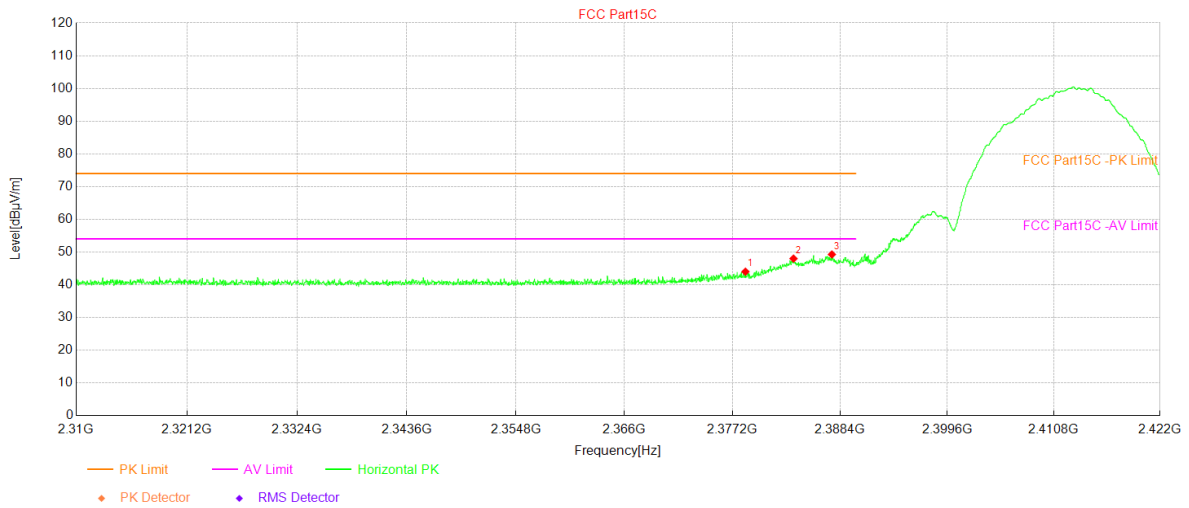


NO.	Freq. [MHz]	Reading [dBµV]	Factor [dB]	Level [dBµV/m]	Limit [dBµV/m]	Margin [dB]	Height [cm]	Angle [°]	Polarity
1	36084.1	50.37	0.44	50.81	74.00	23.19	118	32	Vertical
2	38249.5	49.61	2.83	52.44	74.00	21.56	193	317	Vertical
3	39468.55	49.60	3.90	53.50	74.00	20.50	243	119	Vertical

Radiated Band Edge Test Result

Project Information			
Mode:	802.11 b	Band:	/
Bandwidth	20MHz	Channel	Low
SN:	HQ63B1038C	Engineer:	欧树炎
Remark:	Polarity:X		
Test Standard: FCC Part15C			

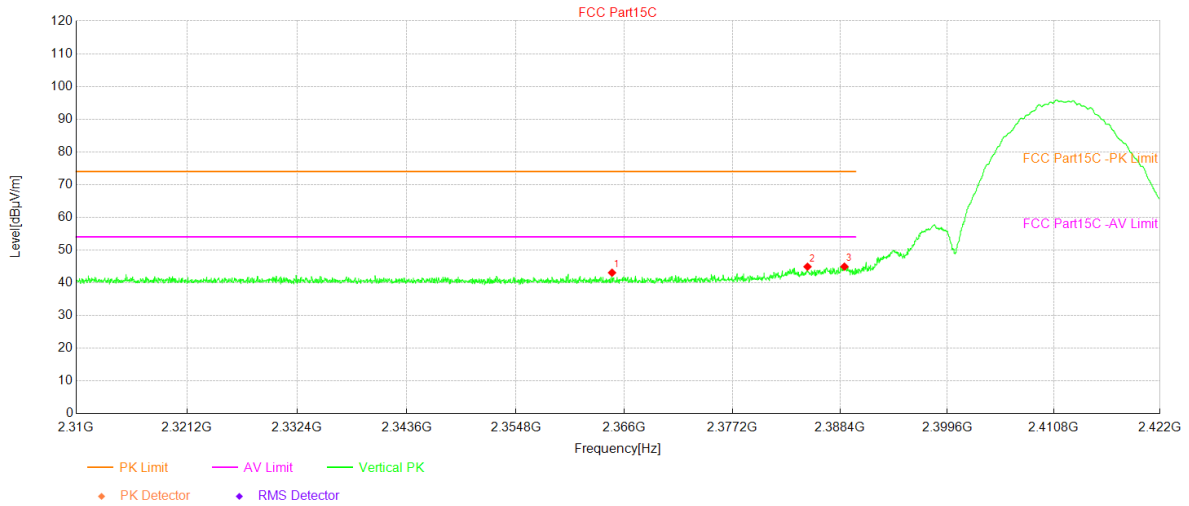
Test Graph



NO.	Freq. [MHz]	Reading [dBµV]	Factor [dB]	Level [dBµV/m]	Limit [dBµV/m]	Margin [dB]	Height [cm]	Angle [°]	Polarity
1	2378.529	40.65	3.35	44.00	74.00	30.00	185	336	Horizontal
2	2383.533	44.63	3.37	48.00	74.00	26.00	222	24	Horizontal
3	2387.529	45.89	3.39	49.28	74.00	24.72	237	28	Horizontal

Project Information			
Mode:	802.11 b	Band:	/
Bandwidth	20MHz	Channel	Low
SN:	HQ63B1038C	Engineer:	欧树炎
Remark:	Polarity:X		
Test Standard: FCC Part15C			

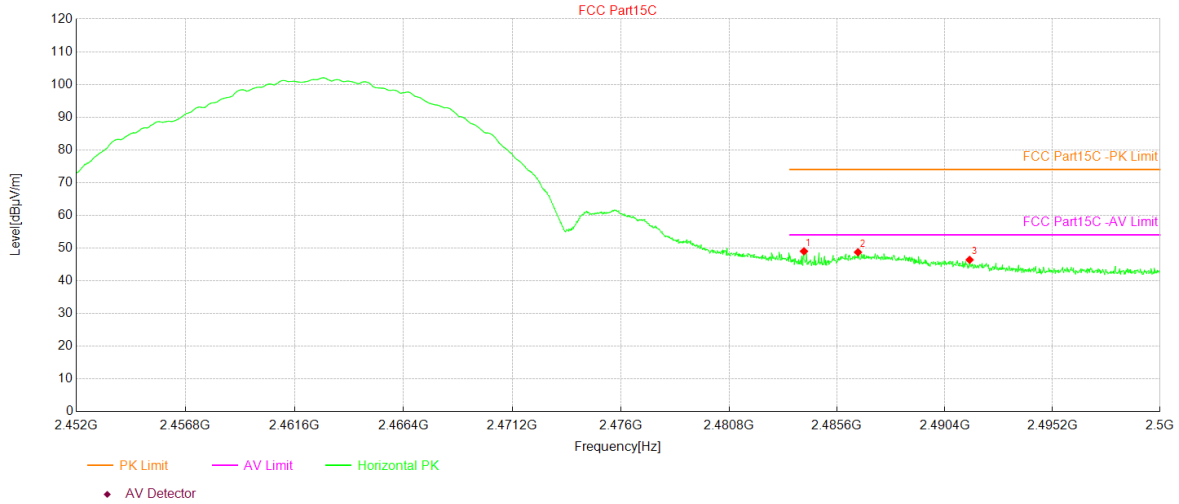
Test Graph



NO.	Freq. [MHz]	Reading [dBµV]	Factor [dB]	Level [dBµV/m]	Limit [dBµV/m]	Margin [dB]	Height [cm]	Angle [°]	Polarity
1	2364.711	39.79	3.29	43.08	74.00	30.92	167	215	Vertical
2	2384.990	41.53	3.38	44.91	74.00	29.09	249	308	Vertical
3	2388.836	41.54	3.40	44.94	74.00	29.06	127	303	Vertical

Project Information			
Mode:	802.11 b	Band:	/
Bandwidth	20MHz	Channel	High
SN:	HQ63B1038C	Engineer:	欧树炎
Remark:	Polarity:X		
Test Standard: FCC Part15C			

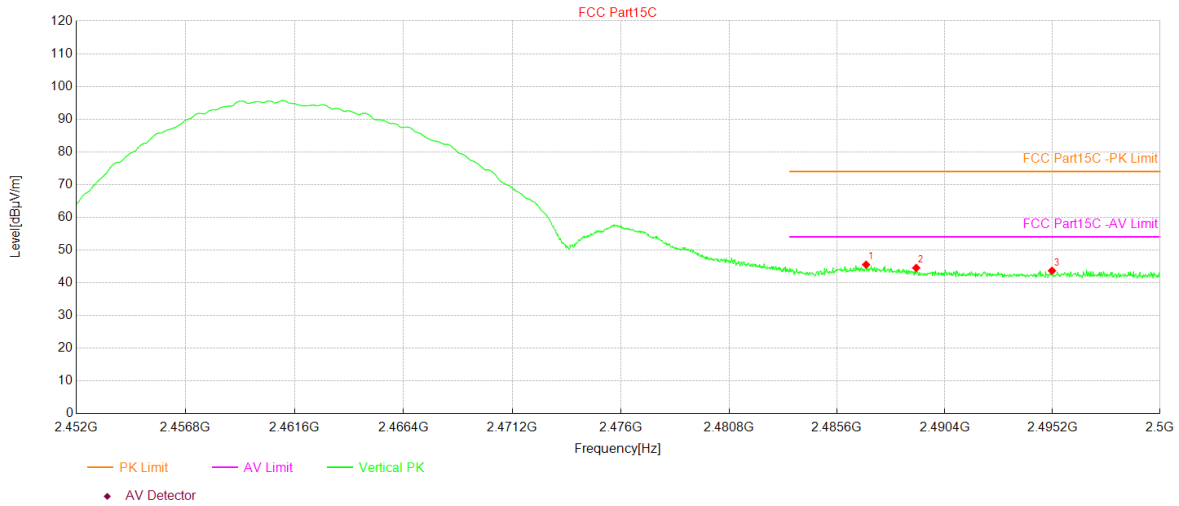
Test Graph



NO.	Freq. [MHz]	Reading [dBµV]	Factor [dB]	Level [dBµV/m]	Limit [dBµV/m]	Margin [dB]	Height [cm]	Angle [°]	Polarity
1	2484.128	44.76	4.26	49.02	74.00	24.98	126	0	Horizontal
2	2486.529	44.45	4.27	48.72	74.00	25.28	194	342	Horizontal
3	2491.499	42.11	4.29	46.40	74.00	27.60	216	4	Horizontal

Project Information			
Mode:	802.11 b	Band:	/
Bandwidth	20MHz	Channel	High
SN:	HQ63B1038C	Engineer:	欧树炎
Remark:	Polarity:X		
Test Standard: FCC Part15C			

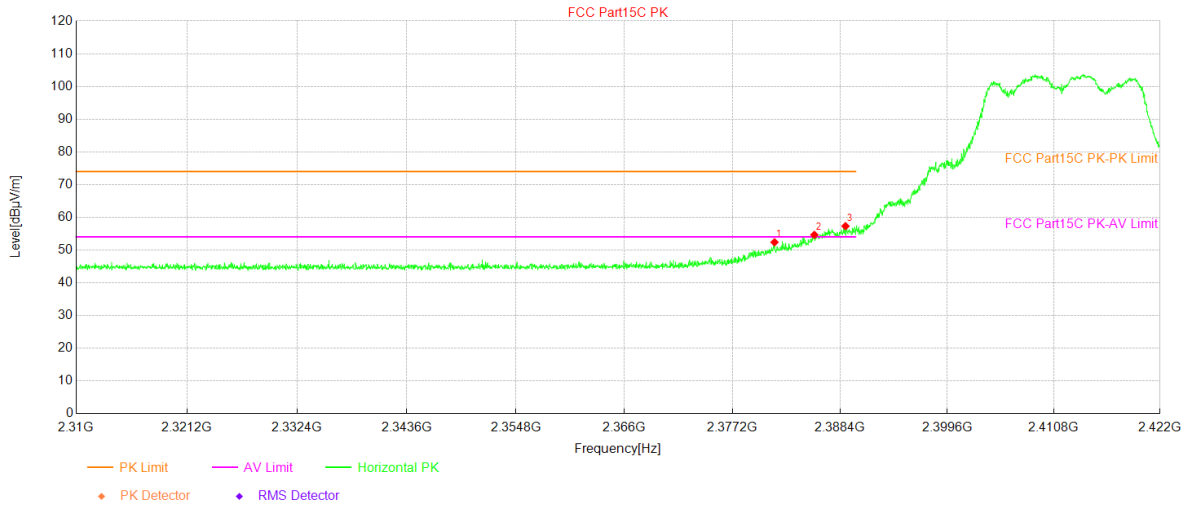
Test Graph



NO.	Freq. [MHz]	Reading [dBµV]	Factor [dB]	Level [dBµV/m]	Limit [dBµV/m]	Margin [dB]	Height [cm]	Angle [°]	Polarity
1	2486.889	41.28	4.27	45.55	74.00	28.45	146	253	Vertical
2	2489.122	40.27	4.28	44.55	74.00	29.45	129	306	Vertical
3	2495.173	39.37	4.30	43.67	74.00	30.33	229	338	Vertical

Project Information			
Mode:	802.11 g	Band:	/
Bandwidth	20MHz	Channel	Low
SN:	HQ63B1038C	Engineer:	欧树炎
Remark:	Polarity:X		
Test Standard: FCC Part15C			

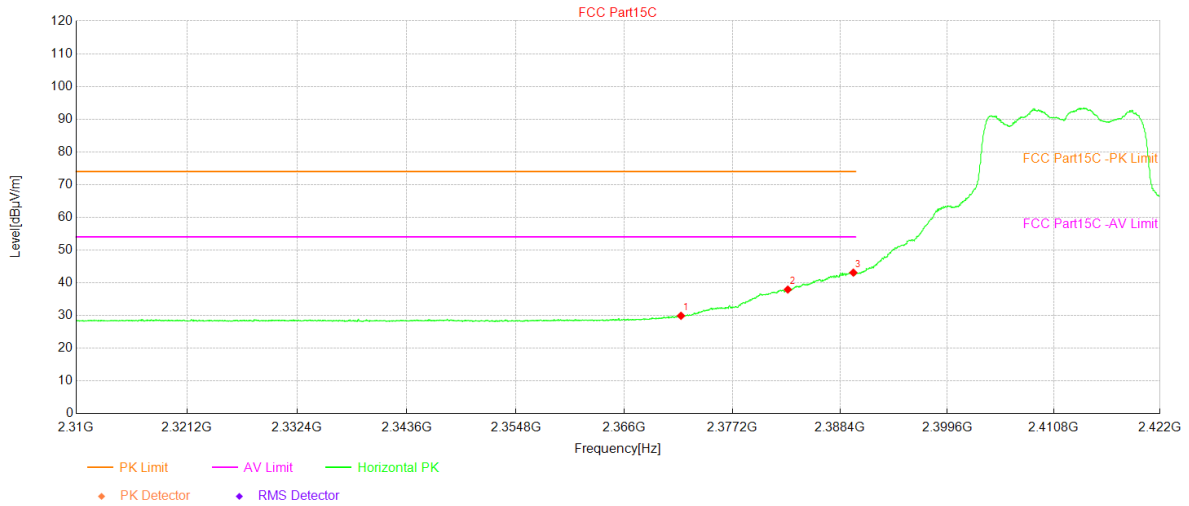
Test Graph



NO.	Freq. [MHz]	Reading [dBµV]	Factor [dB]	Level [dBµV/m]	Limit [dBµV/m]	Margin [dB]	Height [cm]	Angle [°]	Polarity
1	2381.554	49.03	3.36	52.39	74.00	21.61	171	37	Horizontal
2	2385.699	51.26	3.38	54.64	74.00	19.36	122	350	Horizontal
3	2388.948	53.91	3.40	57.31	74.00	16.69	199	29	Horizontal

Project Information			
Mode:	802.11 g	Band:	/
Bandwidth	20MHz	Channel	Low
SN:	HQ63B1038C	Engineer:	欧树炎
Remark:	Polarity:X AV		
Test Standard: FCC Part15C			

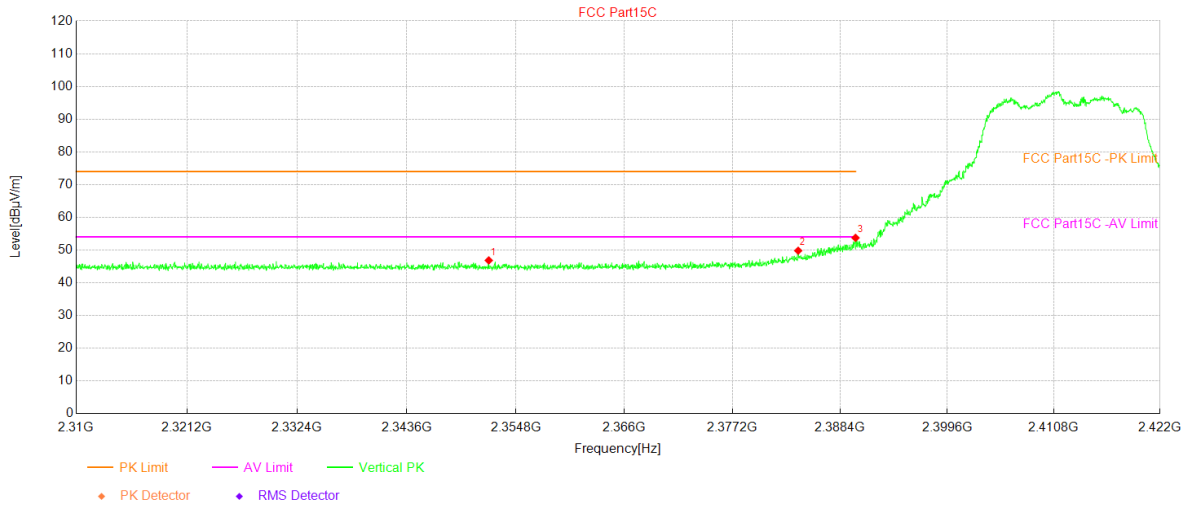
Test Graph



NO.	Freq. [MHz]	Reading [dBµV]	Factor [dB]	Level [dBµV/m]	Limit [dBµV/m]	Margin [dB]	Height [cm]	Angle [°]	Polarity
1	2371.844	26.59	3.32	29.91	54.00	24.09	159	31	Horizontal
2	2382.936	34.57	3.37	37.94	54.00	16.06	218	348	Horizontal
3	2389.770	39.70	3.40	43.10	54.00	10.90	275	352	Horizontal

Project Information			
Mode:	802.11 g	Band:	/
Bandwidth	20MHz	Channel	Low
SN:	HQ63B1038C	Engineer:	欧树炎
Remark:	Polarity:X		
Test Standard: FCC Part15C			

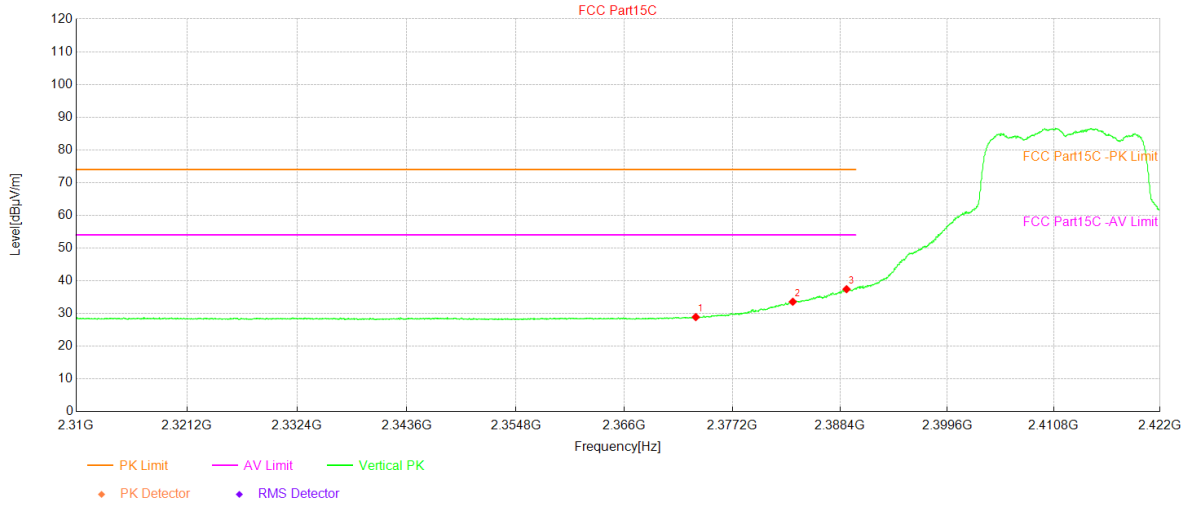
Test Graph



NO.	Freq. [MHz]	Reading [dBµV]	Factor [dB]	Level [dBµV/m]	Limit [dBµV/m]	Margin [dB]	Height [cm]	Angle [°]	Polarity
1	2352.014	43.61	3.23	46.84	74.00	27.16	209	18	Vertical
2	2384.019	46.43	3.37	49.80	74.00	24.20	189	355	Vertical
3	2389.994	50.33	3.40	53.73	74.00	20.27	252	305	Vertical

Project Information			
Mode:	802.11 g	Band:	/
Bandwidth	20MHz	Channel	Low
SN:	HQ63B1038C	Engineer:	欧树炎
Remark:	Polarity:X AV		
Test Standard: FCC Part15C			

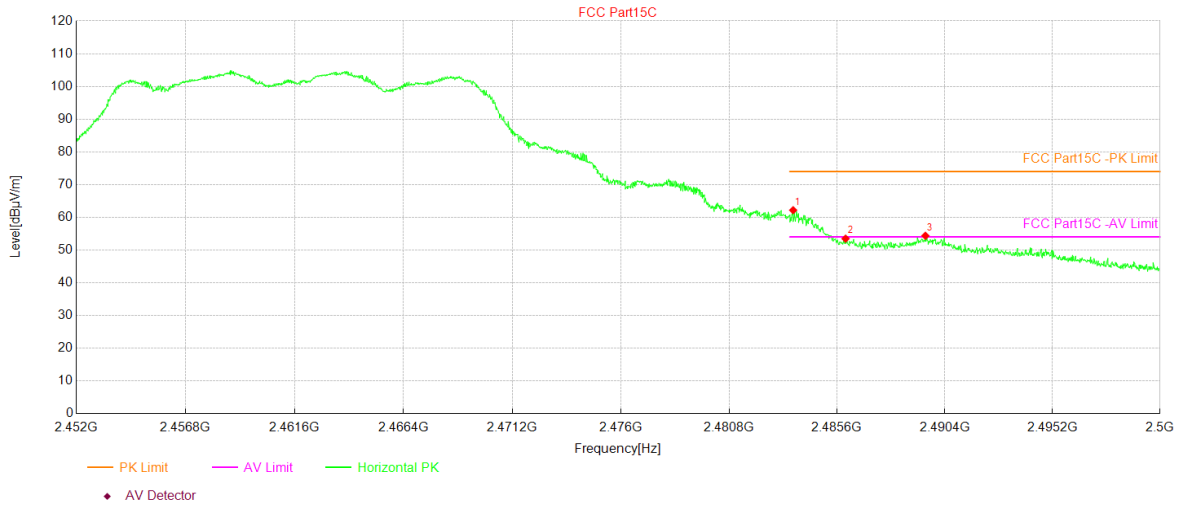
Test Graph



NO.	Freq. [MHz]	Reading [dBµV]	Factor [dB]	Level [dBµV/m]	Limit [dBµV/m]	Margin [dB]	Height [cm]	Angle [°]	Polarity
1	2373.375	25.58	3.33	28.91	54.00	25.09	136	308	Vertical
2	2383.459	30.22	3.37	33.59	54.00	20.41	232	308	Vertical
3	2389.061	34.03	3.40	37.43	54.00	16.57	174	308	Vertical

Project Information			
Mode:	802.11 g	Band:	/
Bandwidth	20MHz	Channel	High
SN:	HQ63B1038C	Engineer:	欧树炎
Remark:	Polarity:X		
Test Standard: FCC Part15C			

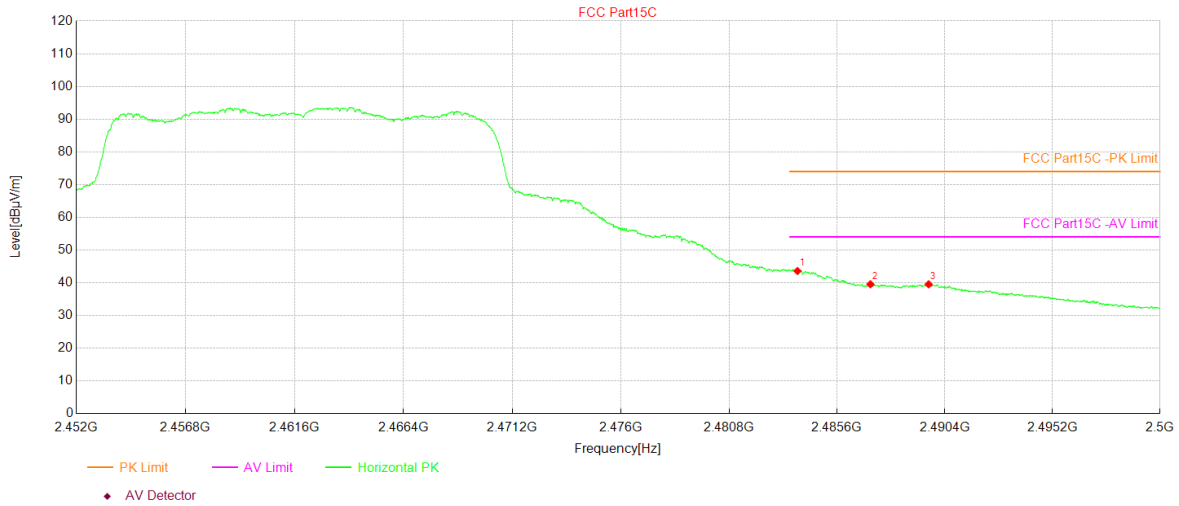
Test Graph



NO.	Freq. [MHz]	Reading [dBµV]	Factor [dB]	Level [dBµV/m]	Limit [dBµV/m]	Margin [dB]	Height [cm]	Angle [°]	Polarity
1	2483.647	57.93	4.25	62.18	74.00	11.82	147	27	Horizontal
2	2485.976	49.22	4.26	53.48	74.00	20.52	207	24	Horizontal
3	2489.530	50.09	4.28	54.37	74.00	19.63	269	27	Horizontal

Project Information			
Mode:	802.11 g	Band:	/
Bandwidth	20MHz	Channel	High
SN:	HQ63B1038C	Engineer:	欧树炎
Remark:	Polarity:X AV		
Test Standard: FCC Part15C			

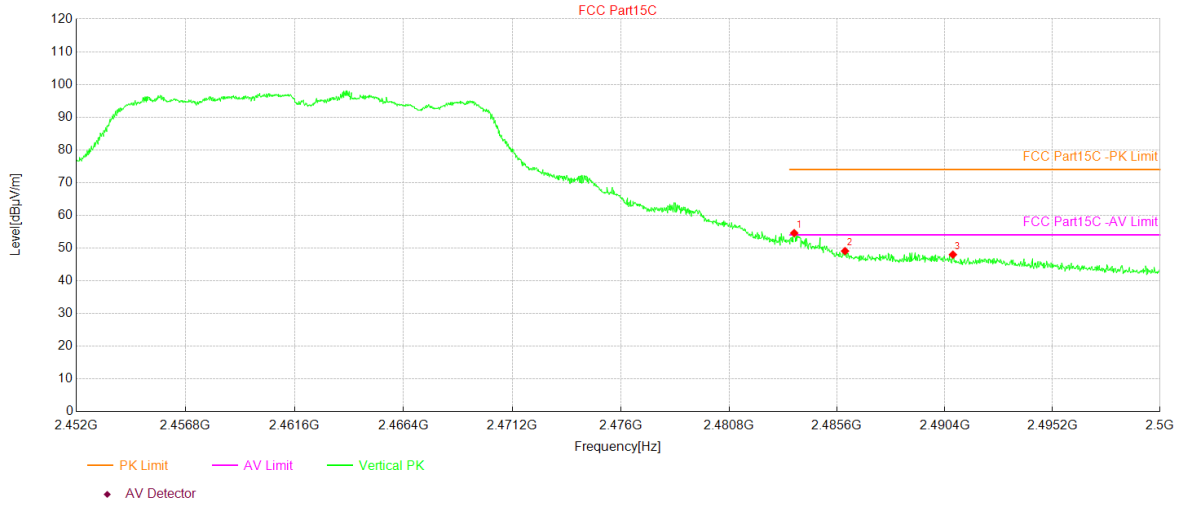
Test Graph



NO.	Freq. [MHz]	Reading [dBµV]	Factor [dB]	Level [dBµV/m]	Limit [dBµV/m]	Margin [dB]	Height [cm]	Angle [°]	Polarity
1	2483.839	39.34	4.26	43.60	54.00	10.40	205	25	Horizontal
2	2487.081	35.28	4.27	39.55	54.00	14.45	167	341	Horizontal
3	2489.674	35.25	4.28	39.53	54.00	14.47	144	21	Horizontal

Project Information			
Mode:	802.11 g	Band:	/
Bandwidth	20MHz	Channel	High
SN:	HQ63B1038C	Engineer:	欧树炎
Remark:	Polarity:X		
Test Standard: FCC Part15C			

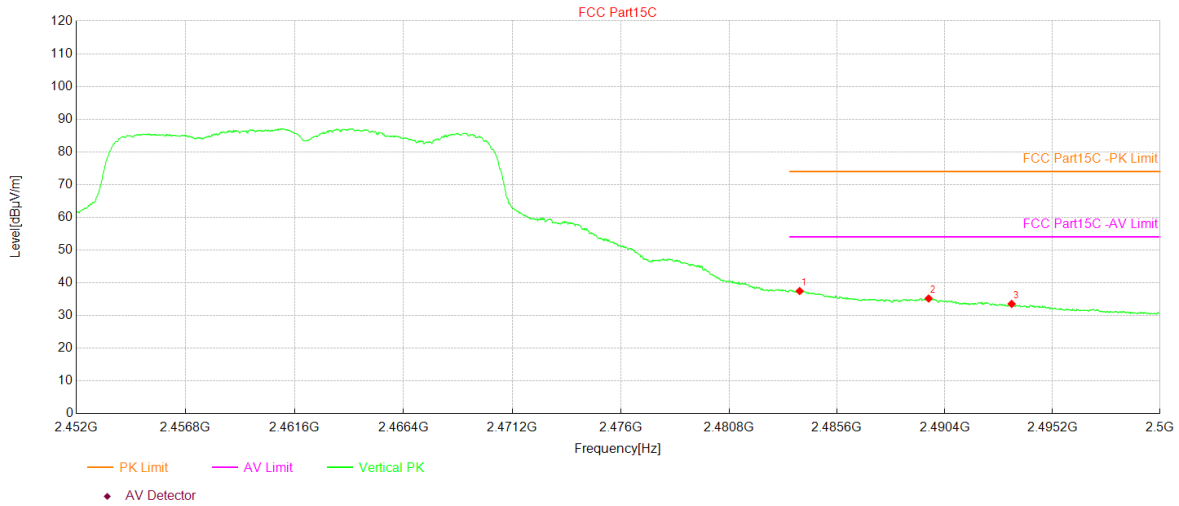
Test Graph



NO.	Freq. [MHz]	Reading [dBµV]	Factor [dB]	Level [dBµV/m]	Limit [dBµV/m]	Margin [dB]	Height [cm]	Angle [°]	Polarity
1	2483.695	50.32	4.25	54.57	74.00	19.43	158	277	Vertical
2	2485.952	44.81	4.26	49.07	74.00	24.93	182	31	Vertical
3	2490.755	43.71	4.28	47.99	74.00	26.01	230	318	Vertical

Project Information			
Mode:	802.11 g	Band:	/
Bandwidth	20MHz	Channel	High
SN:	HQ63B1038C	Engineer:	欧树炎
Remark:	Polarity:X AV		
Test Standard: FCC Part15C			

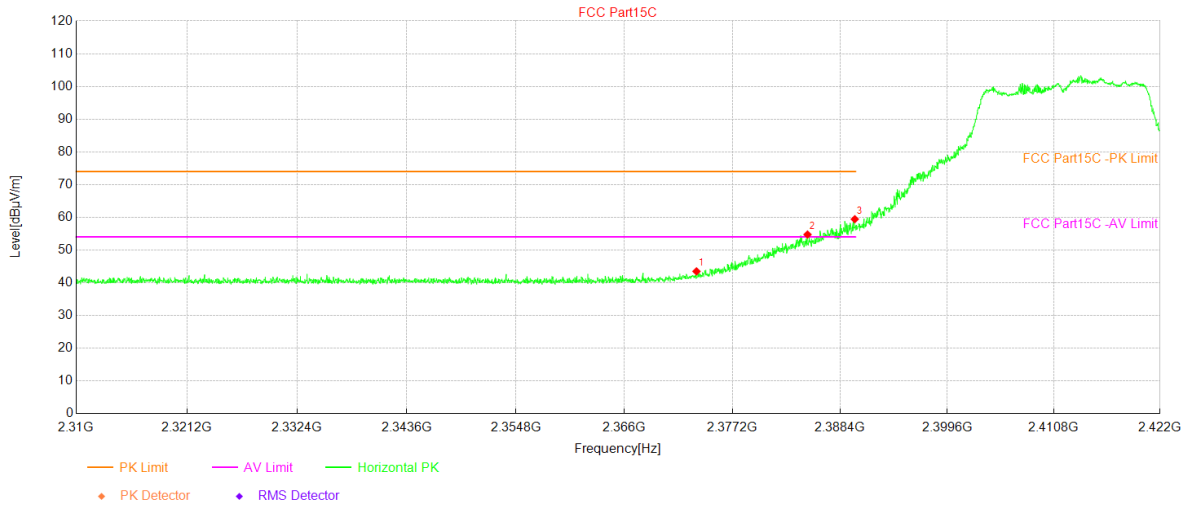
Test Graph



NO.	Freq. [MHz]	Reading [dBµV]	Factor [dB]	Level [dBµV/m]	Limit [dBµV/m]	Margin [dB]	Height [cm]	Angle [°]	Polarity
1	2483.935	33.21	4.26	37.47	54.00	16.53	150	193	Vertical
2	2489.674	30.92	4.28	35.20	54.00	18.80	150	166	Vertical
3	2493.372	29.25	4.29	33.54	54.00	20.46	150	253	Vertical

Project Information			
Mode:	802.11 n20	Band:	/
Bandwidth	20MHz	Channel	Low
SN:	HQ63B1038C	Engineer:	欧树炎
Remark:	Polarity:X		
Test Standard: FCC Part15C			

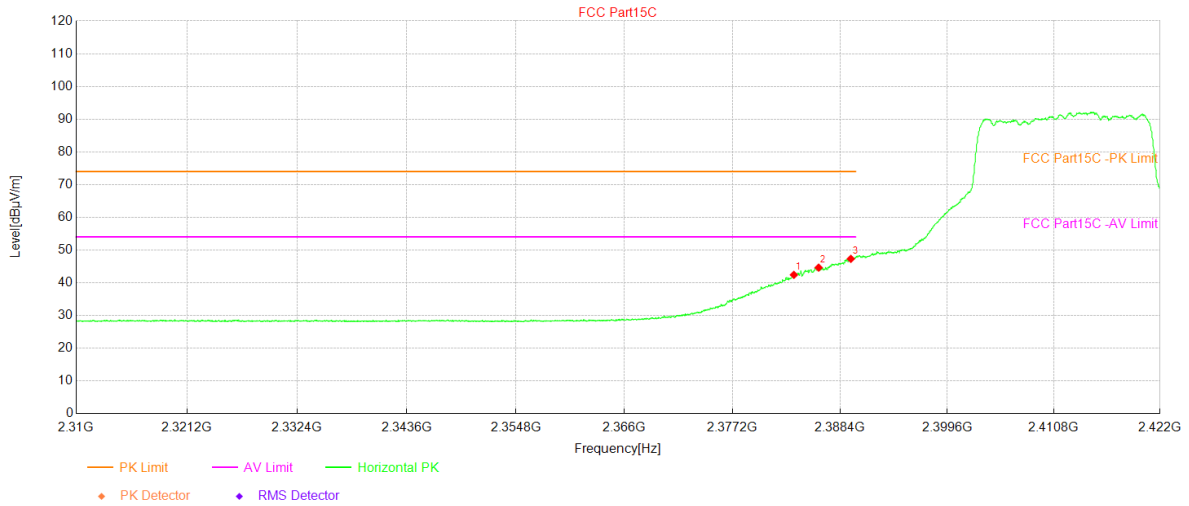
Test Graph



NO.	Freq. [MHz]	Reading [dBµV]	Factor [dB]	Level [dBµV/m]	Limit [dBµV/m]	Margin [dB]	Height [cm]	Angle [°]	Polarity
1	2373.450	40.16	3.33	43.49	74.00	30.51	273	63	Horizontal
2	2384.990	51.36	3.38	54.74	74.00	19.26	183	347	Horizontal
3	2389.919	56.03	3.40	59.43	74.00	14.57	134	352	Horizontal

Project Information			
Mode:	802.11 n20	Band:	/
Bandwidth	20MHz	Channel	Low
SN:	HQ63B1038C	Engineer:	欧树炎
Remark:	Polarity:X AV		
Test Standard: FCC Part15C			

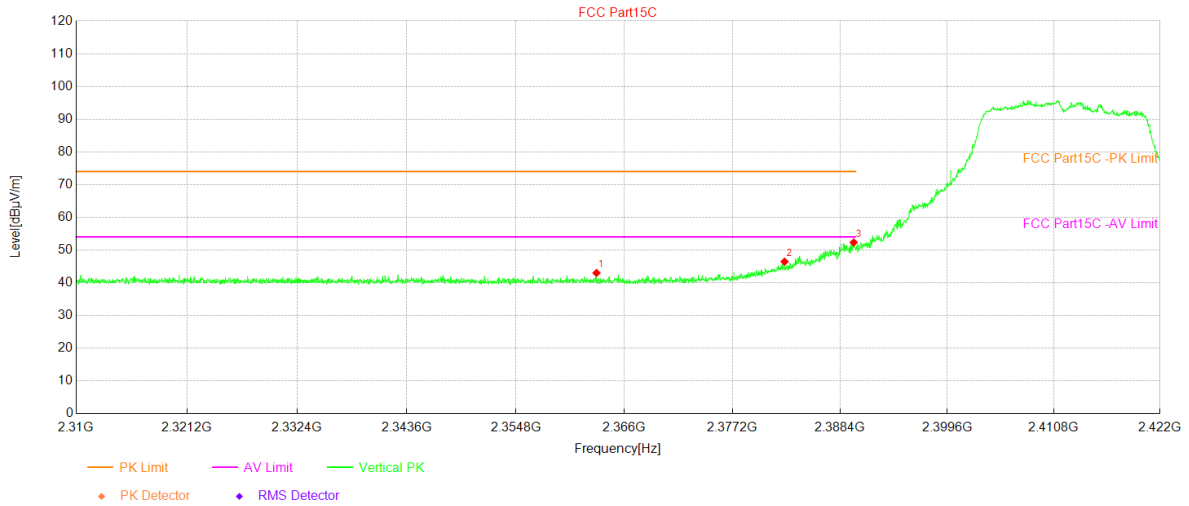
Test Graph



NO.	Freq. [MHz]	Reading [dBµV]	Factor [dB]	Level [dBµV/m]	Limit [dBµV/m]	Margin [dB]	Height [cm]	Angle [°]	Polarity
1	2383.571	39.05	3.37	42.42	54.00	11.58	127	347	Horizontal
2	2386.148	41.25	3.38	44.63	54.00	9.37	169	351	Horizontal
3	2389.509	43.91	3.40	47.31	54.00	6.69	289	351	Horizontal

Project Information			
Mode:	802.11 n20	Band:	/
Bandwidth	20MHz	Channel	Low
SN:	HQ63B1038C	Engineer:	欧树炎
Remark:	Polarity:X		
Test Standard: FCC Part15C			

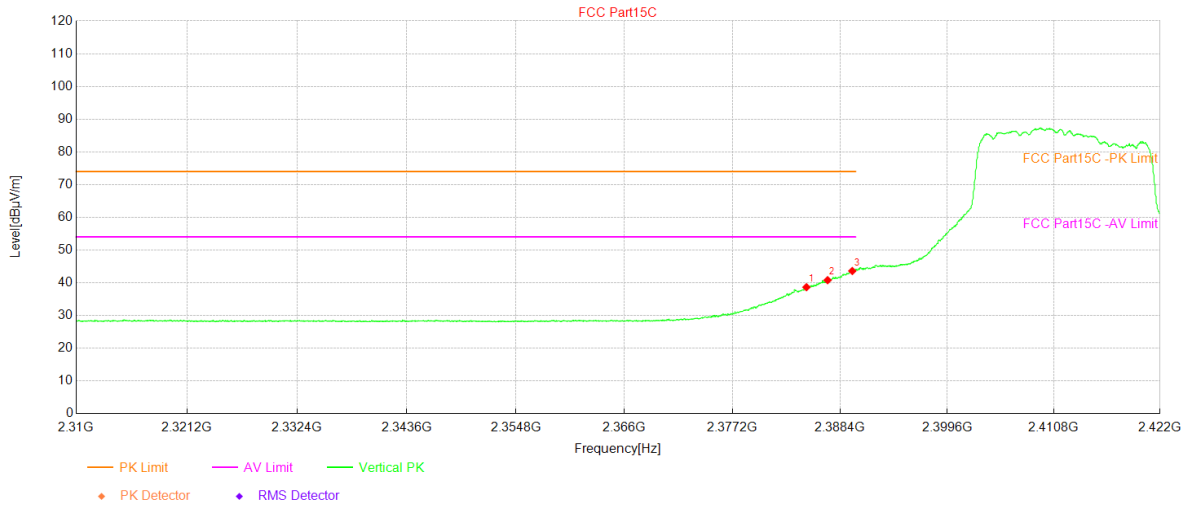
Test Graph



NO.	Freq. [MHz]	Reading [dBµV]	Factor [dB]	Level [dBµV/m]	Limit [dBµV/m]	Margin [dB]	Height [cm]	Angle [°]	Polarity
1	2363.105	39.72	3.29	43.01	74.00	30.99	212	229	Vertical
2	2382.600	43.09	3.37	46.46	74.00	27.54	187	316	Vertical
3	2389.807	48.92	3.40	52.32	74.00	21.68	160	3	Vertical

Project Information			
Mode:	802.11 n20	Band:	/
Bandwidth	20MHz	Channel	Low
SN:	HQ63B1038C	Engineer:	欧树炎
Remark:	Polarity:X AV		
Test Standard: FCC Part15C			

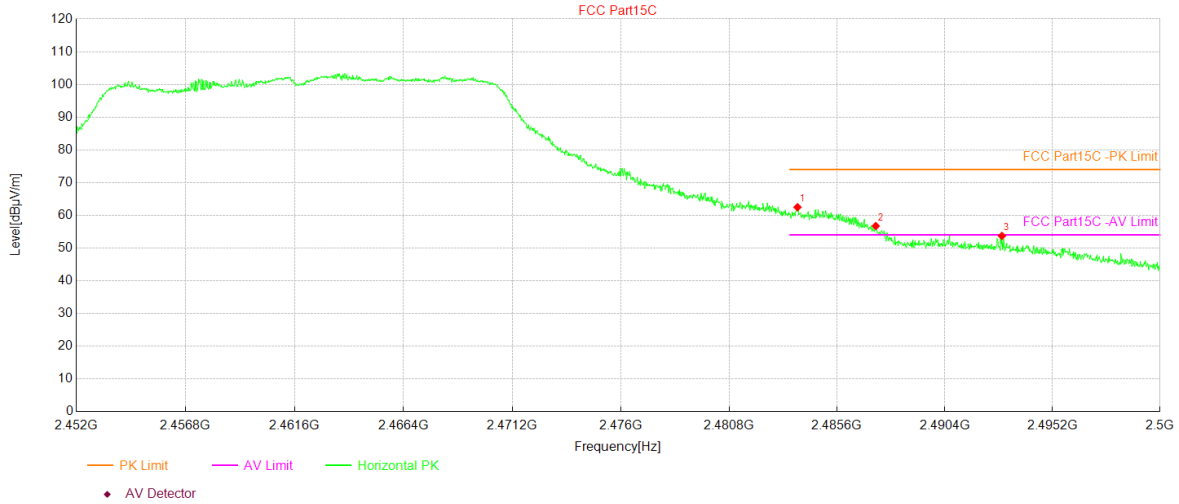
Test Graph



NO.	Freq. [MHz]	Reading [dBµV]	Factor [dB]	Level [dBµV/m]	Limit [dBµV/m]	Margin [dB]	Height [cm]	Angle [°]	Polarity
1	2384.878	35.27	3.38	38.65	54.00	15.35	130	349	Vertical
2	2387.081	37.42	3.38	40.80	54.00	13.20	229	349	Vertical
3	2389.658	40.20	3.40	43.60	54.00	10.40	188	358	Vertical

Project Information			
Mode:	802.11 n20	Band:	/
Bandwidth	20MHz	Channel	High
SN:	HQ63B1038C	Engineer:	欧树炎
Remark:	Polarity:X		
Test Standard: FCC Part15C			

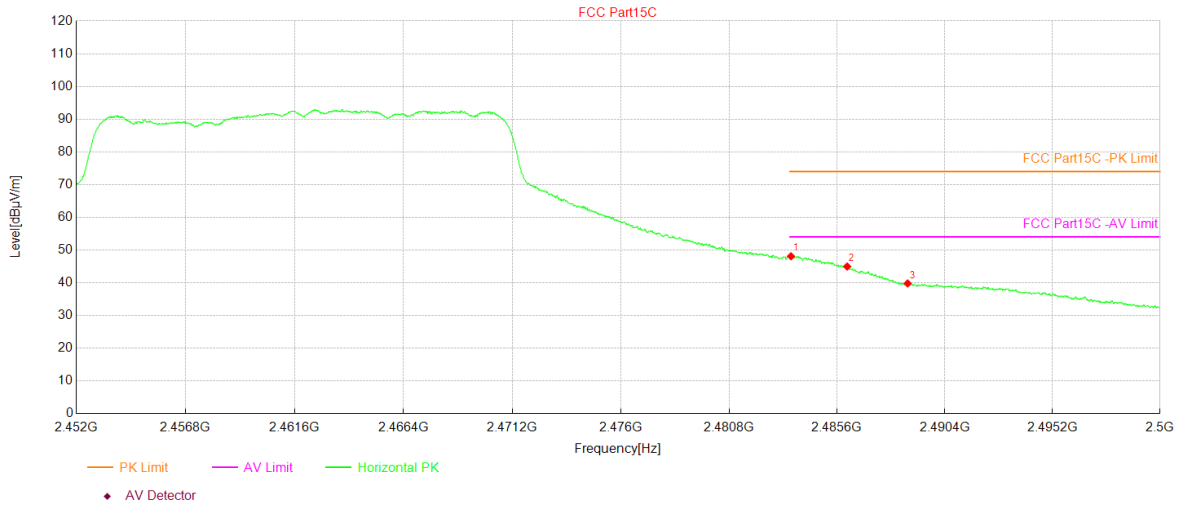
Test Graph



NO.	Freq. [MHz]	Reading [dBµV]	Factor [dB]	Level [dBµV/m]	Limit [dBµV/m]	Margin [dB]	Height [cm]	Angle [°]	Polarity
1	2483.839	58.23	4.26	62.49	74.00	11.51	152	26	Horizontal
2	2487.321	52.46	4.27	56.73	74.00	17.27	195	22	Horizontal
3	2492.940	49.43	4.29	53.72	74.00	20.28	252	26	Horizontal

Project Information			
Mode:	802.11 n20	Band:	/
Bandwidth	20MHz	Channel	High
SN:	HQ63B1038C	Engineer:	欧树炎
Remark:	Polarity:X AV		
Test Standard: FCC Part15C			

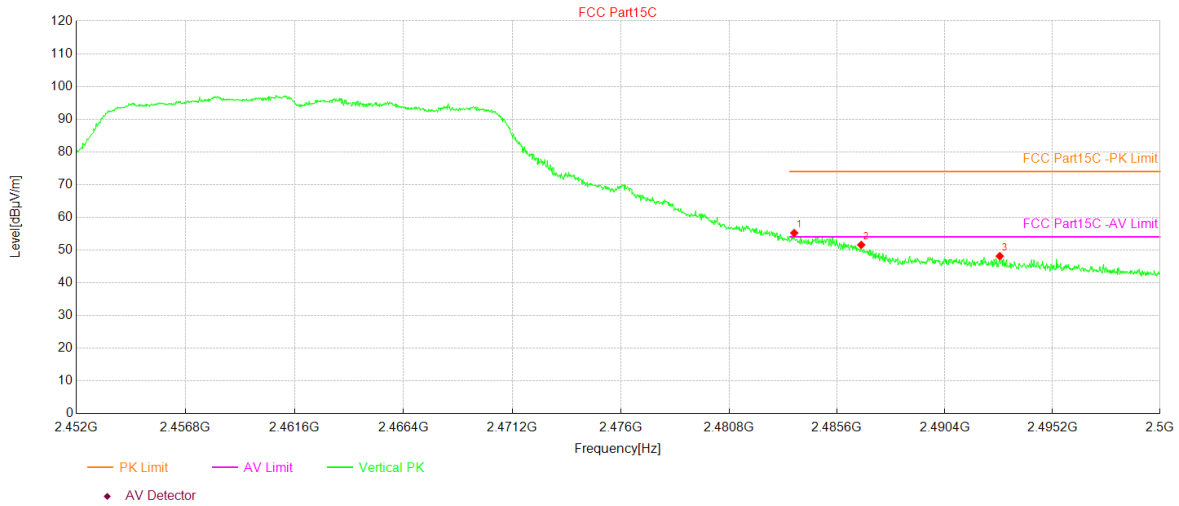
Test Graph



NO.	Freq. [MHz]	Reading [dBµV]	Factor [dB]	Level [dBµV/m]	Limit [dBµV/m]	Margin [dB]	Height [cm]	Angle [°]	Polarity
1	2483.551	43.84	4.25	48.09	54.00	5.91	141	24	Horizontal
2	2486.049	40.70	4.26	44.96	54.00	9.04	161	24	Horizontal
3	2488.738	35.53	4.27	39.80	54.00	14.20	242	24	Horizontal

Project Information			
Mode:	802.11 n20	Band:	/
Bandwidth	20MHz	Channel	High
SN:	HQ63B1038C	Engineer:	欧树炎
Remark:	Polarity:X		
Test Standard: FCC Part15C			

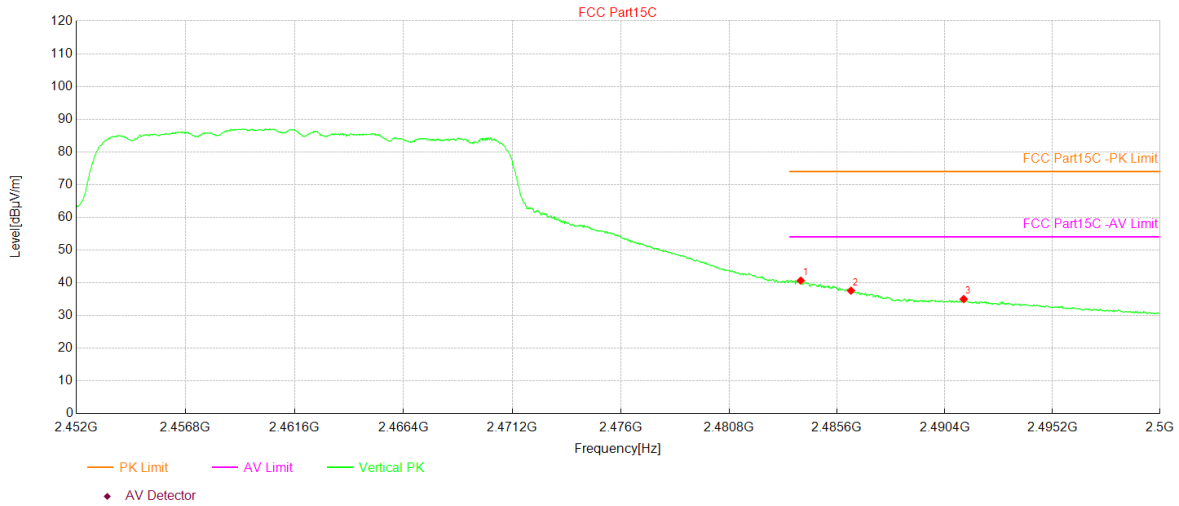
Test Graph



NO.	Freq. [MHz]	Reading [dBµV]	Factor [dB]	Level [dBµV/m]	Limit [dBµV/m]	Margin [dB]	Height [cm]	Angle [°]	Polarity
1	2483.695	50.98	4.25	55.23	74.00	18.77	161	306	Vertical
2	2486.673	47.31	4.27	51.58	74.00	22.42	191	278	Vertical
3	2492.844	43.86	4.29	48.15	74.00	25.85	201	359	Vertical

Project Information			
Mode:	802.11 n20	Band:	/
Bandwidth	20MHz	Channel	High
SN:	HQ63B1038C	Engineer:	欧树炎
Remark:	Polarity:X AV		
Test Standard: FCC Part15C			

Test Graph



NO.	Freq. [MHz]	Reading [dBµV]	Factor [dB]	Level [dBµV/m]	Limit [dBµV/m]	Margin [dB]	Height [cm]	Angle [°]	Polarity
1	2483.983	36.41	4.26	40.67	54.00	13.33	232	278	Vertical
2	2486.217	33.33	4.26	37.59	54.00	16.41	253	278	Vertical
3	2491.235	30.74	4.28	35.02	54.00	18.98	273	278	Vertical

~The End~