



FCC SAR TEST REPORT

FCC ID : PY7-57442Y
Brand Name : Sony
Applicant : Sony Mobile Communications Inc.
4-12-3 Higashi-Shinagawa,
Shinagawa-ku, Tokyo, 140-0002, Japan
Manufacturer : Sony Mobile Communications Inc.
4-12-3 Higashi-Shinagawa,
Shinagawa-ku, Tokyo, 140-0002, Japan
Standard : FCC 47 CFR Part 2 (2.1093)
ANSI/IEEE C95.1-1992
IEEE 1528-2013

The product was received on Sep. 11, 2018 and testing was started from Sep. 26, 2018 and completed on Nov. 12 2018. We, SPORTON INTERNATIONAL INC., would like to declare that the tested sample has been evaluated in accordance with the test procedures and has been in compliance with the applicable technical standards.

The report must not be used by the client to claim product certification, approval, or endorsement by TAF or any agency of government.

The test results in this variant report apply exclusively to the tested model / sample. Without written approval of SPORTON INTERTIONAL INC. EMC & Wireless Communications Laboratory, the test report shall not be reproduced except in full.

Approved by: Cona Huang / Deputy Manager

SPORTON INTERNATIONAL INC. EMC & Wireless Communications Laboratory

No. 52, Huaya 1st Rd., Guishan Dist., Taoyuan City, Taiwan (R.O.C.)



Table of Contents

1. Statement of Compliance 4
2. Guidance Applied..... 4
3. Equipment Under Test (EUT) Information 5
3.1 General Information 5
3.2 Device Serial Number 5
3.3 General LTE SAR Test and Reporting Considerations 6
4. RF Exposure Limits..... 8
4.1 Uncontrolled Environment..... 8
4.2 Controlled Environment..... 8
5. Specific Absorption Rate (SAR)..... 9
5.1 Introduction 9
5.2 SAR Definition..... 9
6. System Description and Setup10
6.1 E-Field Probe 11
6.2 Data Acquisition Electronics (DAE) 11
6.3 Phantom..... 12
6.4 Device Holder..... 13
7. Measurement Procedures14
7.1 Spatial Peak SAR Evaluation 14
7.2 Power Reference Measurement..... 15
7.3 Area Scan 15
7.4 Zoom Scan..... 16
7.5 Volume Scan Procedures 16
7.6 Power Drift Monitoring..... 16
8. Test Equipment List17
9. System Verification18
9.1 Tissue Simulating Liquids..... 18
9.2 Tissue Verification 19
9.3 System Performance Check Results..... 20
10. RF Exposure Positions22
10.1 Ear and handset reference point 22
10.2 Definition of the cheek position 23
10.3 Definition of the tilt position 24
10.4 Body Worn Accessory 24
10.5 Product Specific Exposure 25
10.6 Wireless Router..... 25
11. Conducted RF Output Power (Unit: dBm).....26
12. RF Exposure Conditions52
13. SAR Test Results53
13.1 Head SAR55
13.2 Hotspot SAR57
13.3 Body Worn Accessory SAR.....59
13.4 Product Specific SAR.....61
13.5 Repeated SAR Measurement62
14. Simultaneous Transmission Analysis.....63
14.1 Head Exposure Conditions64
14.2 Hotspot Exposure Conditions.....66
14.3 Body-Worn Accessory Exposure Conditions68
14.4 Product Specific Exposure Conditions69
15. Uncertainty Assessment70
16. References.....70
Appendix A. Plots of System Performance Check
Appendix B. Plots of High SAR Measurement
Appendix C. DASy Calibration Certificate
Appendix D. Test Setup Photos



History of this test report

Report No.	Version	Description	Issued Date
FA882920-01	01	Initial issue of report	Dec. 13, 2018



1. Statement of Compliance

Table with columns: Applicant Name, EUT Description, Brand Name, FCC ID, HW Version, SW Version, RF Exposure Conditions (Equipment Class: Licensed, DTS, NII, DSS), Head (1g SAR W/kg), Body-Worn (1g SAR W/kg), Wireless Router (1g SAR W/kg), Product Specific (10g SAR W/kg), Highest Simultaneous Transmission (1g SAR W/kg), Date Tested, Test Result, Remark.

Sporton Lab is accredited to ISO 17025 by Taiwan Accreditation Foundation (TAF code: 1190) and the FCC designation No. TW1190 under the FCC 2.948(e) by Mutual Recognition Agreement (MRA) in FCC test. This device is in compliance with Specific Absorption Rate (SAR) for general population/uncontrolled exposure limits (1.6 W/kg for Partial-Body, 4.0 W/kg for Product Specific) specified in FCC 47 CFR part 2 (2.1093) and ANSI/IEEE C95.1-1992, and had been tested in accordance with the measurement methods and procedures specified in IEEE 1528-2013 and FCC KDB publications.

Reviewed by: Jason Wang
Report Producer: Wan Liu

2. Guidance Applied

The Specific Absorption Rate (SAR) testing specification, method, and procedure for this device is in accordance with the following standards:

- FCC 47 CFR Part 2 (2.1093)
ANSI/IEEE C95.1-1992
IEEE 1528-2013
FCC KDB 865664 D01 SAR Measurement 100 MHz to 6 GHz v01r04
FCC KDB 865664 D02 SAR Reporting v01r02
FCC KDB 447498 D01 General RF Exposure Guidance v06
FCC KDB 648474 D04 SAR Evaluation Considerations for Wireless Handsets v01r03
FCC KDB 248227 D01 802.11 Wi-Fi SAR v02r02
FCC KDB 941225 D01 3G SAR Procedures v03r01
FCC KDB 941225 D05 SAR for LTE Devices v02r05
FCC KDB 941225 D05A Rel.10 LTE SAR Test Guidance v01r02
FCC KDB 941225 D06 Hotspot Mode SAR v02r01



3. Equipment Under Test (EUT) Information

3.1 General Information

Wireless Technologies	Frequency	Operating Mode	
GSM	850 1900	<ul style="list-style-type: none"> · GSM Voice · GPRS (GMSK) · EDGE (8PSK) 	Multi-Slot Class: Class 33
	Does device support dual transfer mode? (Yes)		
W-CDMA (UMTS)	Band 5 Band 2	<ul style="list-style-type: none"> · AMR / RMC 12.2Kbps · HSDPA · HSUPA · DC-HSDPA 	
LTE (FDD)	Band 2 Band 5 Band 7	<ul style="list-style-type: none"> · QPSK · 16QAM · 64QAM 	
LTE (TDD)	Band 41	· Rel 12 Carrier Aggregation Downlink only (the detail refer to section 11)	
WiFi	2.4GHz: 2412 MHz ~ 2472 MHz	<ul style="list-style-type: none"> · 11b · 11g · 11n (HT20) 	
	5GHz: 5.2GHz: 5180 MHz ~ 5240 MHz 5.3GHz: 5260 MHz ~ 5320 MHz 5.5GHz: 5500 MHz ~ 5720 MHz 5.8GHz: 5745 MHz ~ 5825 MHz	<ul style="list-style-type: none"> · 11a · 11n (HT20) · 11n (HT40) · 11ac (VHT20) · 11ac (VHT40) · 11ac (VHT80) 	
Bluetooth	2.4GHz	· BR / EDR / LE	
NFC	13.56MHz	· ASK	

Accessories Information		
Earphone 1	Model Name	MH410c
	Type Name	AG-1100

3.2 Device Serial Number

Band	SN
WWAN	CQ3001BHQT
WLAN	CQ30015WVY

Note: Several samples were used with identical hardware to support SAR testing. The manufacturer has confirmed that the device tested gave the same physical, mechanical and thermal characteristics and are within operational tolerances expected for production units.



3.3 General LTE SAR Test and Reporting Considerations

Summarized necessary items addressed in KDB 941225 D05 v02r05																																																															
FCC ID	PY7-57442Y																																																														
Operating Frequency Range of each LTE transmission band	LTE Band 2: 1850.7 MHz ~ 1909.3 MHz LTE Band 5: 824.7 MHz ~ 848.3 MHz LTE Band 7: 2502.5 MHz ~ 2567.5 MHz LTE Band 41: 2498.5 MHz ~ 2687.5 MHz																																																														
Channel Bandwidth	LTE Band 02: 1.4MHz, 3MHz, 5MHz, 10MHz, 15MHz, 20MHz LTE Band 05: 1.4MHz, 3MHz, 5MHz, 10MHz LTE Band 07: 5MHz, 10MHz, 15MHz, 20MHz LTE Band 41: 5MHz, 10MHz, 15MHz, 20MHz																																																														
uplink modulations used	QPSK / 16QAM / 64QAM																																																														
LTE Voice / Data requirements	Voice and Data																																																														
LTE MPR permanently built-in by design	Table 6.2.3-1: Maximum Power Reduction (MPR) for Power Class 1, 2 and 3																																																														
	<table border="1"> <thead> <tr> <th rowspan="2">Modulation</th> <th colspan="6">Channel bandwidth / Transmission bandwidth (N_{RB})</th> <th rowspan="2">MPR (dB)</th> </tr> <tr> <th>1.4 MHz</th> <th>3.0 MHz</th> <th>5 MHz</th> <th>10 MHz</th> <th>15 MHz</th> <th>20 MHz</th> </tr> </thead> <tbody> <tr> <td>QPSK</td> <td>> 5</td> <td>> 4</td> <td>> 8</td> <td>> 12</td> <td>> 16</td> <td>> 18</td> <td>≤ 1</td> </tr> <tr> <td>16 QAM</td> <td>≤ 5</td> <td>≤ 4</td> <td>≤ 8</td> <td>≤ 12</td> <td>≤ 16</td> <td>≤ 18</td> <td>≤ 1</td> </tr> <tr> <td>16 QAM</td> <td>> 5</td> <td>> 4</td> <td>> 8</td> <td>> 12</td> <td>> 16</td> <td>> 18</td> <td>≤ 2</td> </tr> <tr> <td>64 QAM</td> <td>≤ 5</td> <td>≤ 4</td> <td>≤ 8</td> <td>≤ 12</td> <td>≤ 16</td> <td>≤ 18</td> <td>≤ 2</td> </tr> <tr> <td>64 QAM</td> <td>> 5</td> <td>> 4</td> <td>> 8</td> <td>> 12</td> <td>> 16</td> <td>> 18</td> <td>≤ 3</td> </tr> <tr> <td>256 QAM</td> <td colspan="6" style="text-align: center;">≥ 1</td> <td>≤ 5</td> </tr> </tbody> </table>	Modulation	Channel bandwidth / Transmission bandwidth (N _{RB})						MPR (dB)	1.4 MHz	3.0 MHz	5 MHz	10 MHz	15 MHz	20 MHz	QPSK	> 5	> 4	> 8	> 12	> 16	> 18	≤ 1	16 QAM	≤ 5	≤ 4	≤ 8	≤ 12	≤ 16	≤ 18	≤ 1	16 QAM	> 5	> 4	> 8	> 12	> 16	> 18	≤ 2	64 QAM	≤ 5	≤ 4	≤ 8	≤ 12	≤ 16	≤ 18	≤ 2	64 QAM	> 5	> 4	> 8	> 12	> 16	> 18	≤ 3	256 QAM	≥ 1						≤ 5
	Modulation		Channel bandwidth / Transmission bandwidth (N _{RB})							MPR (dB)																																																					
		1.4 MHz	3.0 MHz	5 MHz	10 MHz	15 MHz	20 MHz																																																								
	QPSK	> 5	> 4	> 8	> 12	> 16	> 18	≤ 1																																																							
	16 QAM	≤ 5	≤ 4	≤ 8	≤ 12	≤ 16	≤ 18	≤ 1																																																							
	16 QAM	> 5	> 4	> 8	> 12	> 16	> 18	≤ 2																																																							
	64 QAM	≤ 5	≤ 4	≤ 8	≤ 12	≤ 16	≤ 18	≤ 2																																																							
	64 QAM	> 5	> 4	> 8	> 12	> 16	> 18	≤ 3																																																							
	256 QAM	≥ 1						≤ 5																																																							
LTE A-MPR	In the base station simulator configuration, Network Setting value is set to NS_01 to disable A-MPR during SAR testing and the LTE SAR tests was transmitting on all TTI frames (Maximum TTI)																																																														
Spectrum plots for RB configuration	A properly configured base station simulator was used for the SAR and power measurement; therefore, spectrum plots for each RB allocation and offset configuration are not included in the SAR report.																																																														
Power reduction applied to satisfy SAR compliance	Yes, when operating in hotspot mode that LTE B2 power reduction applied to satisfy SAR compliance.																																																														
LTE Carrier Aggregation Combinations	Inter-Band and Intra-Band possible combinations and the detail power measurement please referred to section 11.																																																														
LTE Carrier Aggregation Additional Information	This device supports maximum of 2 carriers in the downlink. Additional following LTE Release features are not supported: Relay, HetNet, Enhanced MIMO, eICI, WiFi Offloading, MDH, eMBMA, Cross-Carrier Scheduling, Enhanced SC-FDMA.																																																														



Transmission (H, M, L) channel numbers and frequencies in each LTE band												
LTE Band 2												
	Bandwidth 1.4 MHz		Bandwidth 3 MHz		Bandwidth 5 MHz		Bandwidth 10 MHz		Bandwidth 15 MHz		Bandwidth 20 MHz	
	Ch. #	Freq. (MHz)	Ch. #	Freq. (MHz)	Ch. #	Freq. (MHz)	Ch. #	Freq. (MHz)	Ch. #	Freq. (MHz)	Ch. #	Freq. (MHz)
L	18607	1850.7	18615	1851.5	18625	1852.5	18650	1855	18675	1857.5	18700	1860
M	18900	1880	18900	1880	18900	1880	18900	1880	18900	1880	18900	1880
H	19193	1909.3	19185	1908.5	19175	1907.5	19150	1905	19125	1902.5	19100	1900
LTE Band 5												
	Bandwidth 1.4 MHz		Bandwidth 3 MHz		Bandwidth 5 MHz		Bandwidth 10 MHz					
	Ch. #	Freq. (MHz)	Ch. #	Freq. (MHz)	Ch. #	Freq. (MHz)	Ch. #	Freq. (MHz)	Ch. #	Freq. (MHz)	Ch. #	Freq. (MHz)
L	20407	824.7	20415	825.5	20425	826.5	20450	829				
M	20525	836.5	20525	836.5	20525	836.5	20525	836.5	20525	836.5		
H	20643	848.3	20635	847.5	20625	846.5	20600	844				
LTE Band 7												
	Bandwidth 5 MHz		Bandwidth 10 MHz		Bandwidth 15 MHz		Bandwidth 20 MHz					
	Ch. #	Freq. (MHz)	Ch. #	Freq. (MHz)	Ch. #	Freq. (MHz)	Ch. #	Freq. (MHz)	Ch. #	Freq. (MHz)	Ch. #	Freq. (MHz)
L	20775	2502.5	20800	2505	20825	2507.5	20850	2510				
M	21100	2535	21100	2535	21100	2535	21100	2535				
H	21425	2567.5	21400	2565	21375	2562.5	21350	2560				
LTE Band 41												
	Bandwidth 5 MHz		Bandwidth 10 MHz		Bandwidth 15 MHz		Bandwidth 20 MHz					
	Ch. #	Freq. (MHz)	Ch. #	Freq. (MHz)	Ch. #	Freq. (MHz)	Ch. #	Freq. (MHz)	Ch. #	Freq. (MHz)	Ch. #	Freq. (MHz)
L	40265	2557.5	40290	2560	40315	2562.5	40340	2565				
L	40585	2589.5	40590	2590	40595	2590.5	40600	2591				
M												
H	40905	2621.5	40890	2620	40885	2619.5	40870	2618				
M												
H	41215	2652.5	41190	2650	41165	2647.5	41140	2645				



4. RF Exposure Limits

4.1 Uncontrolled Environment

Uncontrolled Environments are defined as locations where there is the exposure of individuals who have no knowledge or control of their exposure. The general population/uncontrolled exposure limits are applicable to situations in which the general public may be exposed or in which persons who are exposed as a consequence of their employment may not be made fully aware of the potential for exposure or cannot exercise control over their exposure. Members of the general public would come under this category when exposure is not employment-related; for example, in the case of a wireless transmitter that exposes persons in its vicinity.

4.2 Controlled Environment

Controlled Environments are defined as locations where there is exposure that may be incurred by persons who are aware of the potential for exposure, (i.e. as a result of employment or occupation). In general, occupational/controlled exposure limits are applicable to situations in which persons are exposed as a consequence of their employment, who have been made fully aware of the potential for exposure and can exercise control over their exposure. The exposure category is also applicable when the exposure is of a transient nature due to incidental passage through a location where the exposure levels may be higher than the general population/uncontrolled limits, but the exposed person is fully aware of the potential for exposure and can exercise control over his or her exposure by leaving the area or by some other appropriate means.

Limits for Occupational/Controlled Exposure (W/kg)

Whole-Body	Partial-Body	Hands, Wrists, Feet and Ankles
0.4	8.0	20.0

Limits for General Population/Uncontrolled Exposure (W/kg)

Whole-Body	Partial-Body	Hands, Wrists, Feet and Ankles
0.08	1.6	4.0

1. Whole-Body SAR is averaged over the entire body, partial-body SAR is averaged over any 1gram of tissue defined as a tissue volume in the shape of a cube. SAR for hands, wrists, feet and ankles is averaged over any 10 grams of tissue defined as a tissue volume in the shape of a cube.



5. Specific Absorption Rate (SAR)

5.1 Introduction

SAR is related to the rate at which energy is absorbed per unit mass in an object exposed to a radio field. The SAR distribution in a biological body is complicated and is usually carried out by experimental techniques or numerical modeling. The standard recommends limits for two tiers of groups, occupational/controlled and general population/uncontrolled, based on a person's awareness and ability to exercise control over his or her exposure. In general, occupational/controlled exposure limits are higher than the limits for general population/uncontrolled.

5.2 SAR Definition

The SAR definition is the time derivative (rate) of the incremental energy (dW) absorbed by (dissipated in) an incremental mass (dm) contained in a volume element (dv) of a given density (ρ). The equation description is as below:

$$SAR = \frac{d}{dt} \left(\frac{dW}{dm} \right) = \frac{d}{dt} \left(\frac{dW}{\rho dv} \right)$$

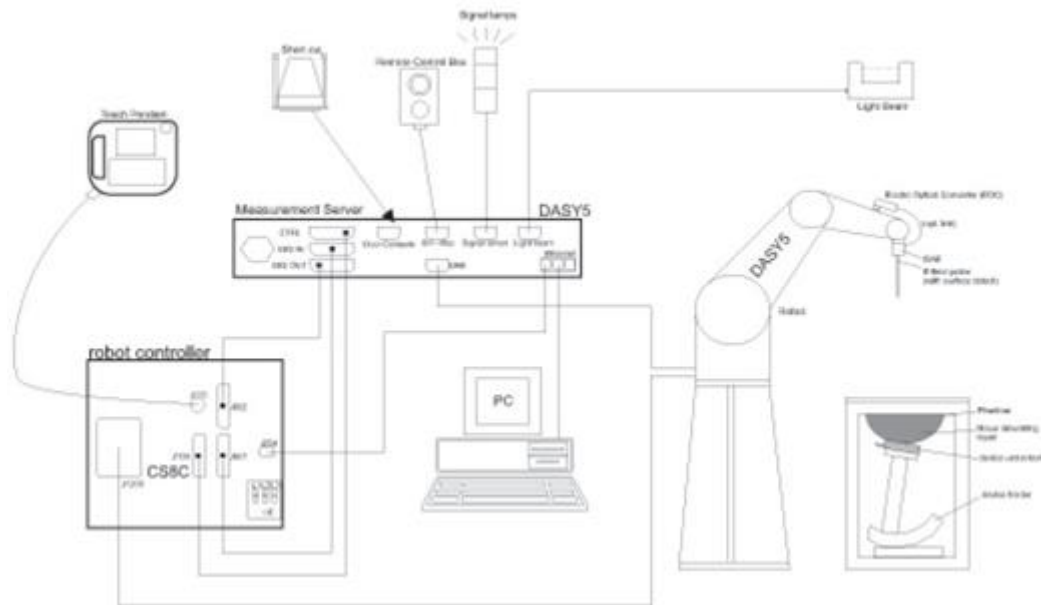
SAR is expressed in units of Watts per kilogram (W/kg)

$$SAR = \frac{\sigma |E|^2}{\rho}$$

Where: σ is the conductivity of the tissue, ρ is the mass density of the tissue and E is the RMS electrical field strength.

6. System Description and Setup

The DASY system used for performing compliance tests consists of the following items:




- A standard high precision 6-axis robot with controller, teach pendant and software. An arm extension for accommodating the data acquisition electronics (DAE).
- An isotropic Field probe optimized and calibrated for the targeted measurement.
- A data acquisition electronics (DAE) which performs the signal amplification, signal multiplexing, AD-conversion, offset measurements, mechanical surface detection, collision detection, etc. The unit is battery powered with standard or rechargeable batteries. The signal is optically transmitted to the EOC.
- The Electro-optical converter (EOC) performs the conversion from optical to electrical signals for the digital communication to the DAE. To use optical surface detection, a special version of the EOC is required. The EOC signal is transmitted to the measurement server.
- The function of the measurement server is to perform the time critical tasks such as signal filtering, control of the robot operation and fast movement interrupts.
- The Light Beam used is for probe alignment. This improves the (absolute) accuracy of the probe positioning.
- A computer running WinXP or Win7 and the DASY5 software.
- Remote control and teach pendant as well as additional circuitry for robot safety such as warning lamps, etc.
- The phantom, the device holder and other accessories according to the targeted measurement.


6.1 E-Field Probe

The SAR measurement is conducted with the dosimetric probe (manufactured by SPEAG). The probe is specially designed and calibrated for use in liquid with high permittivity. The dosimetric probe has special calibration in liquid at different frequency. This probe has a built in optical surface detection system to prevent from collision with phantom.

<ES3DV3 Probe>

Construction	Symmetric design with triangular core Interleaved sensors Built-in shielding against static charges PEEK enclosure material (resistant to organic solvents, e.g., DGBE)	
Frequency	10 MHz – 4 GHz; Linearity: ± 0.2 dB (30 MHz – 4 GHz)	
Directivity	± 0.2 dB in TSL (rotation around probe axis) ± 0.3 dB in TSL (rotation normal to probe axis)	
Dynamic Range	5 μ W/g – >100 mW/g; Linearity: ± 0.2 dB	
Dimensions	Overall length: 337 mm (tip: 20 mm) Tip diameter: 3.9 mm (body: 12 mm) Distance from probe tip to dipole centers: 3.0 mm	

<EX3DV4 Probe>

Construction	Symmetric design with triangular core Built-in shielding against static charges PEEK enclosure material (resistant to organic solvents, e.g., DGBE)	
Frequency	10 MHz – >6 GHz Linearity: ± 0.2 dB (30 MHz – 6 GHz)	
Directivity	± 0.3 dB in TSL (rotation around probe axis) ± 0.5 dB in TSL (rotation normal to probe axis)	
Dynamic Range	10 μ W/g – >100 mW/g Linearity: ± 0.2 dB (noise: typically <1 μ W/g)	
Dimensions	Overall length: 337 mm (tip: 20 mm) Tip diameter: 2.5 mm (body: 12 mm) Typical distance from probe tip to dipole centers: 1 mm	

6.2 Data Acquisition Electronics (DAE)

The data acquisition electronics (DAE) consists of a highly sensitive electrometer-grade preamplifier with auto-zeroing, a channel and gain-switching multiplexer, a fast 16 bit AD-converter and a command decoder and control logic unit. Transmission to the measurement server is accomplished through an optical downlink for data and status information as well as an optical uplink for commands and the clock.


The input impedance of the DAE is 200 MOhm; the inputs are symmetrical and floating. Common mode rejection is above 80 dB.



Fig 5.1 Photo of DAE

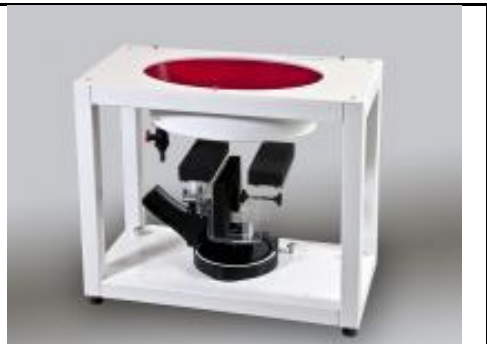
6.3 Phantom

<SAM Twin Phantom>

Shell Thickness	2 ± 0.2 mm; Center ear point: 6 ± 0.2 mm	
Filling Volume	Approx. 25 liters	
Dimensions	Length: 1000 mm; Width: 500 mm; Height: adjustable feet	
Measurement Areas	Left Hand, Right Hand, Flat Phantom	

The bottom plate contains three pair of bolts for locking the device holder. The device holder positions are adjusted to the standard measurement positions in the three sections. A white cover is provided to tap the phantom during off-periods to prevent water evaporation and changes in the liquid parameters. On the phantom top, three reference markers are provided to identify the phantom position with respect to the robot.

<ELI Phantom>

Shell Thickness	2 ± 0.2 mm (sagging: <1%)	
Filling Volume	Approx. 30 liters	
Dimensions	Major ellipse axis: 600 mm Minor axis: 400 mm	

The ELI phantom is intended for compliance testing of handheld and body-mounted wireless devices in the frequency range of 30 MHz to 6 GHz. ELI4 is fully compatible with standard and all known tissue simulating liquids.

6.4 Device Holder

<Mounting Device for Hand-Held Transmitter>

In combination with the Twin SAM V5.0/V5.0c or ELI phantoms, the Mounting Device for Hand-Held Transmitters enables rotation of the mounted transmitter device to specified spherical coordinates. At the heads, the rotation axis is at the ear opening. Transmitter devices can be easily and accurately positioned according to IEC 62209-1, IEEE 1528, FCC, or other specifications. The device holder can be locked for positioning at different phantom sections (left head, right head, flat). And upgrade kit to Mounting Device to enable easy mounting of wider devices like big smart-phones, e-books, small tablets, etc. It holds devices with width up to 140 mm.



Mounting Device for Hand-Held Transmitters



Mounting Device Adaptor for Wide-Phones

<Mounting Device for Laptops and other Body-Worn Transmitters>

The extension is lightweight and made of POM, acrylic glass and foam. It fits easily on the upper part of the mounting device in place of the phone positioned. The extension is fully compatible with the SAM Twin and ELI phantoms.



Mounting Device for Laptops

7. Measurement Procedures

The measurement procedures are as follows:

<Conducted power measurement>

- (a) For WWAN power measurement, use base station simulator to configure EUT WWAN transmission in conducted connection with RF cable, at maximum power in each supported wireless interface and frequency band.
- (b) Read the WWAN RF power level from the base station simulator.
- (c) For WLAN/BT power measurement, use engineering software to configure EUT WLAN/BT continuously transmission, at maximum RF power in each supported wireless interface and frequency band
- (d) Connect EUT RF port through RF cable to the power meter, and measure WLAN/BT output power

<SAR measurement>

- (a) Use base station simulator to configure EUT WWAN transmission in radiated connection, and engineering software to configure EUT WLAN/BT continuously transmission, at maximum RF power, in the highest power channel.
- (b) Place the EUT in the positions as Appendix D demonstrates.
- (c) Set scan area, grid size and other setting on the DASY software.
- (d) Measure SAR results for the highest power channel on each testing position.
- (e) Find out the largest SAR result on these testing positions of each band
- (f) Measure SAR results for other channels in worst SAR testing position if the reported SAR of highest power channel is larger than 0.8 W/kg

According to the test standard, the recommended procedure for assessing the peak spatial-average SAR value consists of the following steps:

- (a) Power reference measurement
- (b) Area scan
- (c) Zoom scan
- (d) Power drift measurement

7.1 Spatial Peak SAR Evaluation

The procedure for spatial peak SAR evaluation has been implemented according to the test standard. It can be conducted for 1g and 10g, as well as for user-specific masses. The DASY software includes all numerical procedures necessary to evaluate the spatial peak SAR value.

The base for the evaluation is a "cube" measurement. The measured volume must include the 1g and 10g cubes with the highest averaged SAR values. For that purpose, the center of the measured volume is aligned to the interpolated peak SAR value of a previously performed area scan.

The entire evaluation of the spatial peak values is performed within the post-processing engine (SEMCAD). The system always gives the maximum values for the 1g and 10g cubes. The algorithm to find the cube with highest averaged SAR is divided into the following stages:

- (a) Extraction of the measured data (grid and values) from the Zoom Scan
- (b) Calculation of the SAR value at every measurement point based on all stored data (A/D values and measurement parameters)
- (c) Generation of a high-resolution mesh within the measured volume
- (d) Interpolation of all measured values from the measurement grid to the high-resolution grid
- (e) Extrapolation of the entire 3-D field distribution to the phantom surface over the distance from sensor to surface
- (f) Calculation of the averaged SAR within masses of 1g and 10g



7.2 Power Reference Measurement

The Power Reference Measurement and Power Drift Measurements are for monitoring the power drift of the device under test in the batch process. The minimum distance of probe sensors to surface determines the closest measurement point to phantom surface. This distance cannot be smaller than the distance of sensor calibration points to probe tip as defined in the probe properties.

7.3 Area Scan

The area scan is used as a fast scan in two dimensions to find the area of high field values, before doing a fine measurement around the hot spot. The sophisticated interpolation routines implemented in DASY software can find the maximum found in the scanned area, within a range of the global maximum. The range (in dB0 is specified in the standards for compliance testing. For example, a 2 dB range is required in IEEE standard 1528 and IEC 62209 standards, whereby 3 dB is a requirement when compliance is assessed in accordance with the ARIB standard (Japan), if only one zoom scan follows the area scan, then only the absolute maximum will be taken as reference. For cases where multiple maximums are detected, the number of zoom scans has to be increased accordingly.

Area scan parameters extracted from FCC KDB 865664 D01v01r04 SAR measurement 100 MHz to 6 GHz.

	≤ 3 GHz	> 3 GHz
Maximum distance from closest measurement point (geometric center of probe sensors) to phantom surface	5 ± 1 mm	$\frac{1}{2} \cdot \delta \cdot \ln(2) \pm 0.5$ mm
Maximum probe angle from probe axis to phantom surface normal at the measurement location	30° ± 1°	20° ± 1°
Maximum area scan spatial resolution: Δx_{Area} , Δy_{Area}	≤ 2 GHz: ≤ 15 mm 2 – 3 GHz: ≤ 12 mm	3 – 4 GHz: ≤ 12 mm 4 – 6 GHz: ≤ 10 mm
	When the x or y dimension of the test device, in the measurement plane orientation, is smaller than the above, the measurement resolution must be ≤ the corresponding x or y dimension of the test device with at least one measurement point on the test device.	

7.4 Zoom Scan

Zoom scans are used assess the peak spatial SAR values within a cubic averaging volume containing 1 gram and 10 gram of simulated tissue. The zoom scan measures points (refer to table below) within a cube shoes base faces are centered on the maxima found in a preceding area scan job within the same procedure. When the measurement is done, the zoom scan evaluates the averaged SAR for 1 gram and 10 gram and displays these values next to the job's label.

Zoom scan parameters extracted from FCC KDB 865664 D01v01r04 SAR measurement 100 MHz to 6 GHz.

		≤ 3 GHz	> 3 GHz	
Maximum zoom scan spatial resolution: $\Delta x_{Zoom}, \Delta y_{Zoom}$		≤ 2 GHz: ≤ 8 mm 2 – 3 GHz: ≤ 5 mm*	3 – 4 GHz: ≤ 5 mm* 4 – 6 GHz: ≤ 4 mm*	
Maximum zoom scan spatial resolution, normal to phantom surface	uniform grid: $\Delta z_{Zoom}(n)$	≤ 5 mm	3 – 4 GHz: ≤ 4 mm 4 – 5 GHz: ≤ 3 mm 5 – 6 GHz: ≤ 2 mm	
	graded grid	$\Delta z_{Zoom}(1)$: between 1 st two points closest to phantom surface	≤ 4 mm	3 – 4 GHz: ≤ 3 mm 4 – 5 GHz: ≤ 2.5 mm 5 – 6 GHz: ≤ 2 mm
		$\Delta z_{Zoom}(n>1)$: between subsequent points	$\leq 1.5 \cdot \Delta z_{Zoom}(n-1)$	
Minimum zoom scan volume	x, y, z	≥ 30 mm	3 – 4 GHz: ≥ 28 mm 4 – 5 GHz: ≥ 25 mm 5 – 6 GHz: ≥ 22 mm	
Note: δ is the penetration depth of a plane-wave at normal incidence to the tissue medium; see draft standard IEEE P1528-2011 for details. * When zoom scan is required and the <i>reported</i> SAR from the <i>area scan based 1-g SAR estimation</i> procedures of KDB 447498 is ≤ 1.4 W/kg, ≤ 8 mm, ≤ 7 mm and ≤ 5 mm zoom scan resolution may be applied, respectively, for 2 GHz to 3 GHz, 3 GHz to 4 GHz and 4 GHz to 6 GHz.				

7.5 Volume Scan Procedures

The volume scan is used for assess overlapping SAR distributions for antennas transmitting in different frequency bands. It is equivalent to an oversized zoom scan used in standalone measurements. The measurement volume will be used to enclose all the simultaneous transmitting antennas. For antennas transmitting simultaneously in different frequency bands, the volume scan is measured separately in each frequency band. In order to sum correctly to compute the 1g aggregate SAR, the EUT remain in the same test position for all measurements and all volume scan use the same spatial resolution and grid spacing. When all volume scan were completed, the software, SEMCAD postprocessor can combine and subsequently superpose these measurement data to calculating the multiband SAR.

7.6 Power Drift Monitoring

All SAR testing is under the EUT install full charged battery and transmit maximum output power. In DASy measurement software, the power reference measurement and power drift measurement procedures are used for monitoring the power drift of EUT during SAR test. Both these procedures measure the field at a specified reference position before and after the SAR testing. The software will calculate the field difference in dB. If the power drifts more than 5%, the SAR will be retested.



8. Test Equipment List

Manufacturer	Name of Equipment	Type/Model	Serial Number	Calibration	
				Last Cal.	Due Date
SPEAG	835MHz System Validation Kit	D835V2	4d167	Feb. 27, 2018	Feb. 26, 2019
SPEAG	1900MHz System Validation Kit	D1900V2	5d018	Jun. 21, 2018	Jun. 20, 2019
SPEAG	2450MHz System Validation Kit	D2450V2	929	Mar. 01, 2018	Feb. 28, 2019
SPEAG	2600MHz System Validation Kit	D2600V2	1078	Mar. 01, 2018	Feb. 28, 2019
SPEAG	5GHz System Validation Kit	D5GHzV2	1203	Dec. 14, 2017	Dec. 13, 2018
SPEAG	Data Acquisition Electronics	DAE4	1326	Sep. 18, 2018	Sep. 17, 2019
SPEAG	Data Acquisition Electronics	DAE4	1399	Nov. 16, 2017	Nov. 15, 2018
SPEAG	Data Acquisition Electronics	DAE3	577	Sep. 19, 2018	Sep. 18, 2019
SPEAG	Data Acquisition Electronics	DAE4	854	Jun. 14, 2018	Jun. 13, 2019
SPEAG	Data Acquisition Electronics	DAE4	853	Jul. 24, 2018	Jul. 23, 2019
SPEAG	Dosimetric E-Field Probe	EX3DV4	3925	May. 31, 2018	May. 30, 2019
SPEAG	Dosimetric E-Field Probe	ES3DV3	3270	Sep. 24, 2018	Sep. 23, 2019
SPEAG	Dosimetric E-Field Probe	EX3DV4	7306	Jul. 26, 2018	Jul. 25, 2019
SPEAG	Dosimetric E-Field Probe	EX3DV4	7324	Jul. 16, 2018	Jul. 15, 2019
SPEAG	Dosimetric E-Field Probe	EX3DV4	7346	Feb. 28, 2018	Feb. 27, 2019
RCPTWN	Thermometer	HTC-1	TM685-1	Mar. 16, 2018	Mar. 15, 2019
RCPTWN	Thermometer	HTC-1	TM281-1	Mar. 16, 2018	Mar. 15, 2019
RCPTWN	Thermometer	HTC-1	TM560-1	Mar. 16, 2018	Mar. 15, 2019
Anritsu	Radio Communication Analyzer	MT8821C	6201341950	Apr. 17, 2018	Apr. 16, 2019
Agilent	Wireless Communication Test Set	E5515C	MY50266977	May. 21, 2018	May. 20, 2019
R&S	BT Base Station	CBT	100815	Feb. 05, 2018	Feb. 04, 2019
SPEAG	Device Holder	N/A	N/A	N/A	N/A
Anritsu	Signal Generator	MG3710A	6201502524	Dec. 07, 2017	Dec. 06, 2018
Agilent	ENA Network Analyzer	E5071C	MY46316648	Jan. 17, 2018	Jan. 16, 2019
SPEAG	Dielectric Probe Kit	DAK-3.5	1146	Jul. 24, 2018	Jul. 23, 2019
LINE SEIKI	Digital Thermometer	DTM3000-spezial	2942	Dec. 08, 2017	Dec. 07, 2018
Anritsu	Power Meter	ML2495A	1419002	May. 18, 2018	May. 17, 2019
Anritsu	Power Sensor	MA2411B	1339124	May. 18, 2018	May. 17, 2019
Anritsu	Power Meter	ML2495A	1240001	Sep. 13, 2018	Sep. 12, 2019
Anritsu	Power Sensor	MA2411B	1207349	Sep. 13, 2018	Sep. 12, 2019
Agilent	Spectrum Analyzer	E4408B	MY44211028	Aug. 28, 2018	Aug. 27, 2019
Anritsu	Spectrum Analyzer	MS2830A	6201396378	Jun. 23, 2018	Jun. 22, 2019
Mini-Circuits	Power Amplifier	ZVE-8G+	6382	Aug. 09, 2018	Aug. 08, 2019
Mini-Circuits	Power Amplifier	ZHL-42W+	15542	Aug. 09, 2018	Aug. 08, 2019
ATM	Dual Directional Coupler	C122H-10	P610410z-02	Note 1	
Woken	Attenuator 1	WK0602-XX	N/A	Note 1	
PE	Attenuator 2	PE7005-10	N/A	Note 1	
PE	Attenuator 3	PE7005- 3	N/A	Note 1	

General Note:

1. Prior to system verification and validation, the path loss from the signal generator to the system check source and the power meter, which includes the amplifier, cable, attenuator and directional coupler, was measured by the network analyzer. The reading of the power meter was offset by the path loss difference between the path to the power meter and the path to the system check source to monitor the actual power level fed to the system check source.

9. System Verification

9.1 Tissue Simulating Liquids

For the measurement of the field distribution inside the SAM phantom with DASY, the phantom must be filled with around 25 liters of homogeneous body tissue simulating liquid. For head SAR testing, the liquid height from the ear reference point (ERP) of the phantom to the liquid top surface is larger than 15 cm, which is shown in Fig. 10.1. For body SAR testing, the liquid height from the center of the flat phantom to the liquid top surface is larger than 15 cm, which is shown in Fig. 10.2.

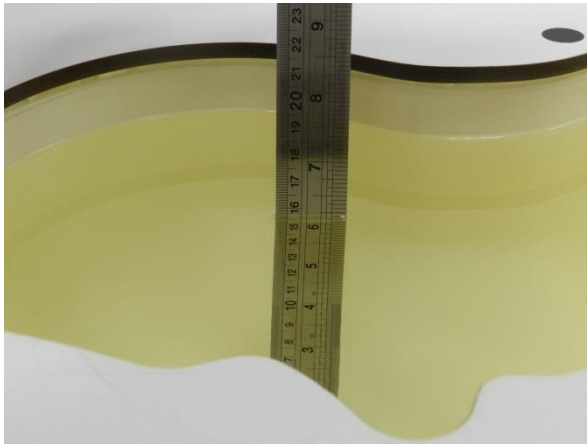


Fig 10.1 Photo of Liquid Height for Head SAR

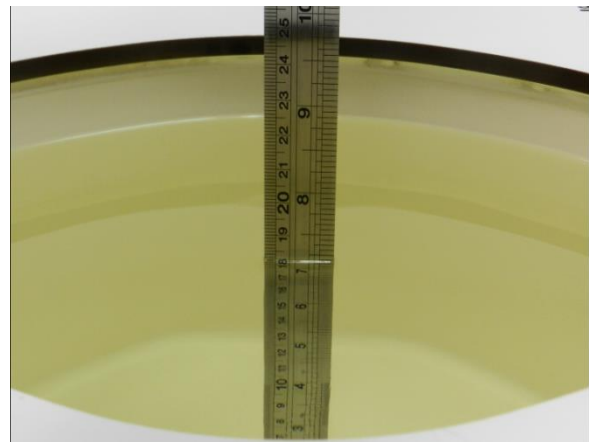


Fig 10.2 Photo of Liquid Height for Body SAR

9.2 Tissue Verification

The following tissue formulations are provided for reference only as some of the parameters have not been thoroughly verified. The composition of ingredients may be modified accordingly to achieve the desired target tissue parameters required for routine SAR evaluation.

Frequency (MHz)	Water (%)	Sugar (%)	Cellulose (%)	Salt (%)	Preventol (%)	DGBE (%)	Conductivity (σ)	Permittivity (ϵ_r)
For Head								
750	41.1	57.0	0.2	1.4	0.2	0	0.89	41.9
835	40.3	57.9	0.2	1.4	0.2	0	0.90	41.5
900	40.3	57.9	0.2	1.4	0.2	0	0.97	41.5
1800, 1900, 2000	55.2	0	0	0.3	0	44.5	1.40	40.0
2450	55.0	0	0	0	0	45.0	1.80	39.2
2600	54.8	0	0	0.1	0	45.1	1.96	39.0
For Body								
750	51.7	47.2	0	0.9	0.1	0	0.96	55.5
835	50.8	48.2	0	0.9	0.1	0	0.97	55.2
900	50.8	48.2	0	0.9	0.1	0	1.05	55.0
1800, 1900, 2000	70.2	0	0	0.4	0	29.4	1.52	53.3
2450	68.6	0	0	0	0	31.4	1.95	52.7
2600	68.1	0	0	0.1	0	31.8	2.16	52.5

Simulating Liquid for 5GHz, Manufactured by SPEAG

Ingredients	(% by weight)
Water	64~78%
Mineral oil	11~18%
Emulsifiers	9~15%
Additives and Salt	2~3%

<Tissue Dielectric Parameter Check Results>

Frequency (MHz)	Tissue Type	Liquid Temp. (°C)	Conductivity (σ)	Permittivity (ϵ_r)	Conductivity Target (σ)	Permittivity Target (ϵ_r)	Delta (σ) (%)	Delta (ϵ_r) (%)	Limit (%)	Date
835	HSL	22.2	0.886	42.064	0.90	41.50	-1.56	1.36	±5	2018/11/5
835	MSL	22.6	0.946	54.473	0.97	55.20	-2.47	-1.32	±5	2018/11/4
1900	HSL	22.7	1.434	39.999	1.40	40.00	2.43	0.00	±5	2018/11/12
1900	MSL	22.8	1.534	52.496	1.52	53.30	0.92	-1.51	±5	2018/11/13
1900	MSL	22.5	1.583	52.463	1.52	53.30	4.14	-1.57	±5	2018/11/22
2450	HSL	22.6	1.845	37.884	1.80	39.20	2.50	-3.36	±5	2018/9/26
2450	HSL	22.6	1.793	40.543	1.80	39.20	-0.39	3.43	±5	2018/9/27
2450	MSL	22.9	2.014	51.500	1.95	52.70	3.28	-2.28	±5	2018/9/29
2600	HSL	22.3	1.949	40.167	1.96	39.00	-0.56	2.99	±5	2018/11/7
2600	HSL	22.8	1.960	37.522	1.96	39.00	0.00	-3.79	±5	2018/11/13
2600	MSL	22.7	2.183	54.420	2.16	52.50	1.06	3.66	±5	2018/11/4
5250	HSL	22.2	4.507	35.715	4.71	35.95	-4.31	-0.65	±5	2018/9/26
5250	MSL	22.6	5.520	49.238	5.36	48.95	2.99	0.59	±5	2018/10/1
5600	HSL	22.2	4.848	35.261	5.07	35.50	-4.38	-0.67	±5	2018/9/26
5600	MSL	22.6	5.973	48.620	5.77	48.50	3.52	0.25	±5	2018/10/1
5750	HSL	22.2	5.006	35.064	5.22	35.35	-4.10	-0.81	±5	2018/9/26
5750	MSL	22.6	6.185	48.371	5.94	48.28	4.12	0.19	±5	2018/10/1

**9.3 System Performance Check Results**

Comparing to the original SAR value provided by SPEAG, the verification data should be within its specification of 10 %. Below table shows the target SAR and measured SAR after normalized to 1W input power. The table below indicates the system performance check can meet the variation criterion and the plots can be referred to Appendix A of this report.

Date	Frequency (MHz)	Tissue Type	Input Power (mW)	Dipole S/N	Probe S/N	DAE S/N	Measured 1g SAR (W/kg)	Targeted 1g SAR (W/kg)	Normalized 1g SAR (W/kg)	Deviation (%)
2018/11/5	835	HSL	250	D835V2-4d167	EX3DV4 - SN7306	DAE3 Sn577	2.42	9.26	9.68	4.54
2018/11/4	835	MSL	250	D835V2-4d167	EX3DV4 - SN7306	DAE3 Sn577	2.48	9.62	9.92	3.12
2018/11/12	1900	HSL	250	D1900V2-5d018	ES3DV3 - SN3270	DAE4 Sn853	9.68	40.10	38.72	-3.44
2018/11/13	1900	MSL	250	D1900V2-5d018	ES3DV3 - SN3270	DAE4 Sn853	9.87	40.20	39.48	-1.79
2018/11/22	1900	MSL	250	D1900V2-5d018	EX3DV4 - SN7306	DAE3 Sn577	10.50	40.20	42	4.48
2018/9/26	2450	HSL	250	D2450V2-929	EX3DV4 - SN7346	DAE4 Sn1399	13.60	52.20	54.4	4.21
2018/9/27	2450	HSL	250	D2450V2-929	EX3DV4 - SN7346	DAE4 Sn1399	13.40	52.20	53.6	2.68
2018/9/29	2450	MSL	250	D2450V2-929	EX3DV4 - SN7324	DAE4 Sn854	14.20	52.30	56.8	8.60
2018/11/7	2600	HSL	250	D2600V2-1078	EX3DV4 - SN3925	DAE4 Sn1326	13.80	56.50	55.2	-2.30
2018/11/13	2600	HSL	250	D2600V2-1078	ES3DV3 - SN3270	DAE4 Sn853	14.50	56.50	58	2.65
2018/11/4	2600	MSL	250	D2600V2-1078	EX3DV4 - SN7306	DAE3 Sn577	13.40	54.10	53.6	-0.92
2018/9/26	5250	HSL	100	D5GHzV2-1203	EX3DV4 - SN7346	DAE4 Sn1399	7.67	80.80	76.7	-5.07
2018/10/1	5250	MSL	100	D5GHzV2-1203	EX3DV4 - SN7306	DAE4 Sn1399	8.05	77.50	80.5	3.87
2018/9/26	5600	HSL	100	D5GHzV2-1203	EX3DV4 - SN7346	DAE4 Sn1399	8.09	84.10	80.9	-3.80
2018/10/1	5600	MSL	100	D5GHzV2-1203	EX3DV4 - SN7306	DAE4 Sn1399	8.67	79.30	86.7	9.33
2018/9/26	5750	HSL	100	D5GHzV2-1203	EX3DV4 - SN7346	DAE4 Sn1399	8.37	80.50	83.7	3.98
2018/10/1	5750	MSL	100	D5GHzV2-1203	EX3DV4 - SN7306	DAE4 Sn1399	7.91	76.80	79.1	2.99

Date	Frequency (MHz)	Tissue Type	Input Power (mW)	Dipole S/N	Probe S/N	DAE S/N	Measured 10g SAR (W/kg)	Targeted 10g SAR (W/kg)	Normalized 10g SAR (W/kg)	Deviation (%)
2018/11/5	835	HSL	250	D835V2-4d167	EX3DV4 - SN7306	DAE3 Sn577	1.59	6.03	6.36	5.47
2018/11/4	835	MSL	250	D835V2-4d167	EX3DV4 - SN7306	DAE3 Sn577	1.64	6.27	6.56	4.63
2018/11/12	1900	HSL	250	D1900V2-5d018	ES3DV3 - SN3270	DAE4 Sn853	4.84	21.20	19.36	-8.68
2018/11/13	1900	MSL	250	D1900V2-5d018	ES3DV3 - SN3270	DAE4 Sn853	5.25	21.40	21	-1.87
2018/11/22	1900	MSL	250	D1900V2-5d018	EX3DV4 - SN7306	DAE3 Sn577	5.48	21.40	21.92	2.43
2018/9/26	2450	HSL	250	D2450V2-929	EX3DV4 - SN7346	DAE4 Sn1399	6.38	24.20	25.52	5.45
2018/9/27	2450	HSL	250	D2450V2-929	EX3DV4 - SN7346	DAE4 Sn1399	6.32	24.20	25.28	4.46
2018/9/29	2450	MSL	250	D2450V2-929	EX3DV4 - SN7324	DAE4 Sn854	6.39	24.40	25.56	4.75
2018/11/7	2600	HSL	250	D2600V2-1078	EX3DV4 - SN3925	DAE4 Sn1326	6.14	25.30	24.56	-2.92
2018/11/13	2600	HSL	250	D2600V2-1078	ES3DV3 - SN3270	DAE4 Sn853	6.54	25.30	26.16	3.40
2018/11/4	2600	MSL	250	D2600V2-1078	EX3DV4 - SN7306	DAE3 Sn577	5.91	24.10	23.64	-1.91
2018/9/26	5250	HSL	100	D5GHzV2-1203	EX3DV4 - SN7346	DAE4 Sn1399	2.20	23.20	22	-5.17
2018/10/1	5250	MSL	100	D5GHzV2-1203	EX3DV4 - SN7306	DAE4 Sn1399	2.27	21.50	22.7	5.58
2018/9/26	5600	HSL	100	D5GHzV2-1203	EX3DV4 - SN7346	DAE4 Sn1399	2.31	23.80	23.1	-2.94
2018/10/1	5600	MSL	100	D5GHzV2-1203	EX3DV4 - SN7306	DAE4 Sn1399	2.42	22.10	24.2	9.50
2018/9/26	5750	HSL	100	D5GHzV2-1203	EX3DV4 - SN7346	DAE4 Sn1399	2.43	22.80	24.3	6.58
2018/10/1	5750	MSL	100	D5GHzV2-1203	EX3DV4 - SN7306	DAE4 Sn1399	2.22	21.30	22.2	4.23

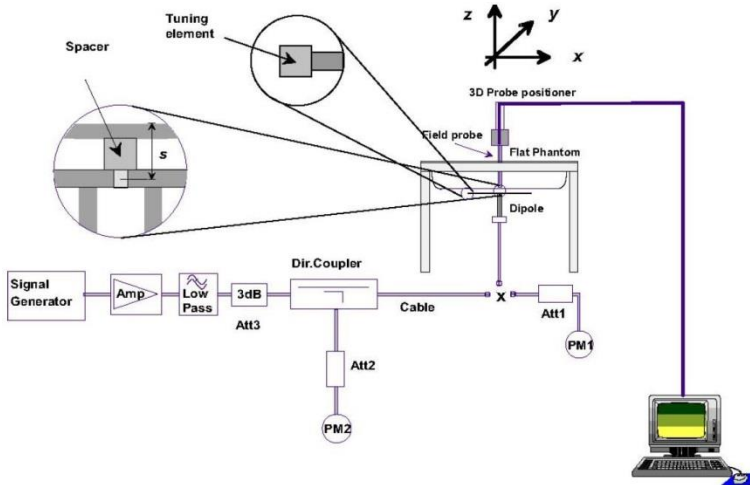


Fig 8.3.1 System Performance Check Setup



Fig 8.3.2 Setup Photo

10. RF Exposure Positions

10.1 Ear and handset reference point

Figure 9.1.1 shows the front, back, and side views of the SAM phantom. The center-of-mouth reference point is labeled “M,” the left ear reference point (ERP) is marked “LE,” and the right ERP is marked “RE.” Each ERP is 15 mm along the B-M (back-mouth) line behind the entrance-to-ear-canal (EEC) point, as shown in Figure 9.1.2 The Reference Plane is defined as passing through the two ear reference points and point M. The line N-F (neck-front), also called the reference pivoting line, is normal to the Reference Plane and perpendicular to both a line passing through RE and LE and the B-M line (see Figure 9.1.3). Both N-F and B-M lines should be marked on the exterior of the phantom shell to facilitate handset positioning. Posterior to the N-F line the ear shape is a flat surface with 6 mm thickness at each ERP, and forward of the N-F line the ear is truncated, as illustrated in Figure 9.1.2. The ear truncation is introduced to preclude the ear lobe from interfering with handset tilt, which could lead to unstable positioning at the cheek.

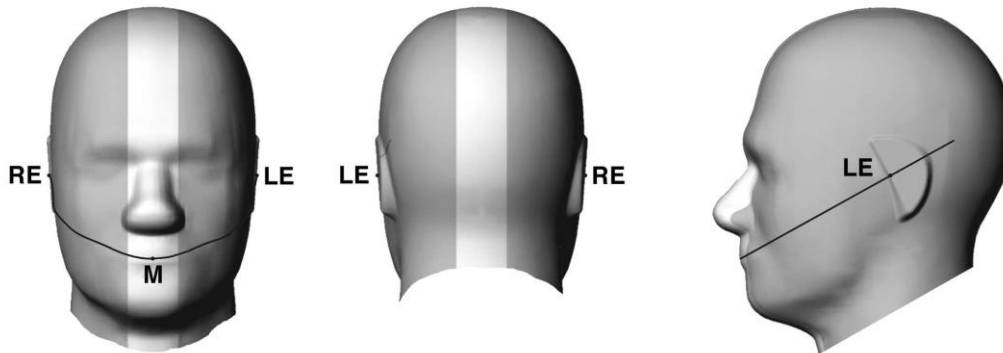


Fig 9.1.1 Front, back, and side views of SAM twin phantom



Fig 9.1.2 Close-up side view of phantom showing the ear region.

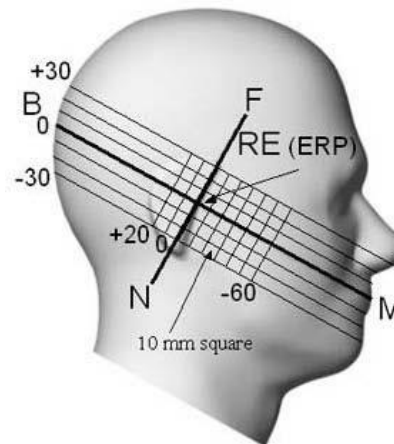


Fig 9.1.3 Side view of the phantom showing relevant markings and seven cross-sectional plane locations

10.2 Definition of the cheek position

1. Ready the handset for talk operation, if necessary. For example, for handsets with a cover piece (flip cover), open the cover. If the handset can transmit with the cover closed, both configurations must be tested.
2. Define two imaginary lines on the handset—the vertical centerline and the horizontal line. The vertical centerline passes through two points on the front side of the handset—the midpoint of the width w_t of the handset at the level of the acoustic output (point A in Figure 9.2.1 and Figure 9.2.2), and the midpoint of the width w_b of the bottom of the handset (point B). The horizontal line is perpendicular to the vertical centerline and passes through the center of the acoustic output (see Figure 9.2.1). The two lines intersect at point A. Note that for many handsets, point A coincides with the center of the acoustic output; however, the acoustic output may be located elsewhere on the horizontal line. Also note that the vertical centerline is not necessarily parallel to the front face of the handset (see Figure 9.2.2), especially for clamshell handsets, handsets with flip covers, and other irregularly-shaped handsets.
3. Position the handset close to the surface of the phantom such that point A is on the (virtual) extension of the line passing through points RE and LE on the phantom (see Figure 9.2.3), such that the plane defined by the vertical centerline and the horizontal line of the handset is approximately parallel to the sagittal plane of the phantom.
4. Translate the handset towards the phantom along the line passing through RE and LE until handset point A touches the pinna at the ERP.
5. While maintaining the handset in this plane, rotate it around the LE-RE line until the vertical centerline is in the plane normal to the plane containing B-M and N-F lines, i.e., the Reference Plane.
6. Rotate the handset around the vertical centerline until the handset (horizontal line) is parallel to the N-F line.
7. While maintaining the vertical centerline in the Reference Plane, keeping point A on the line passing through RE and LE, and maintaining the handset contact with the pinna, rotate the handset about the N-F line until any point on the handset is in contact with a phantom point below the pinna on the cheek. See Figure 9.2.3. The actual rotation angles should be documented in the test report.

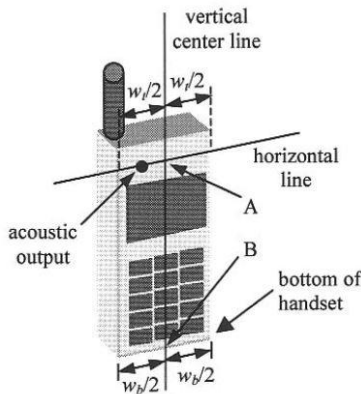


Fig 9.2.1 Handset vertical and horizontal reference lines—“fixed case”

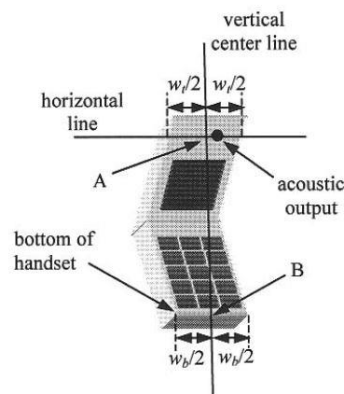


Fig 9.2.2 Handset vertical and horizontal reference lines—“clam-shell case”

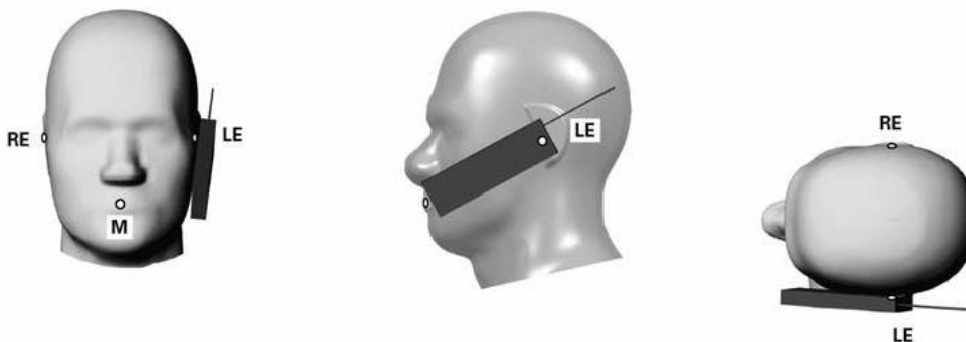


Fig 9.2.3 cheek or touch position. The reference points for the right ear (RE), left ear (LE), and mouth (M), which establish the Reference Plane for handset positioning, are indicated.

10.3 Definition of the tilt position

1. Ready the handset for talk operation, if necessary. For example, for handsets with a cover piece (flip cover), open the cover. If the handset can transmit with the cover closed, both configurations must be tested.
2. While maintaining the orientation of the handset, move the handset away from the pinna along the line passing through RE and LE far enough to allow a rotation of the handset away from the cheek by 15°.
3. Rotate the handset around the horizontal line by 15°.
4. While maintaining the orientation of the handset, move the handset towards the phantom on the line passing through RE and LE until any part of the handset touches the ear. The tilt position is obtained when the contact point is on the pinna. See Figure 9.3.1. If contact occurs at any location other than the pinna, e.g., the antenna at the back of the phantom head, the angle of the handset should be reduced. In this case, the tilt position is obtained if any point on the handset is in contact with the pinna and a second point

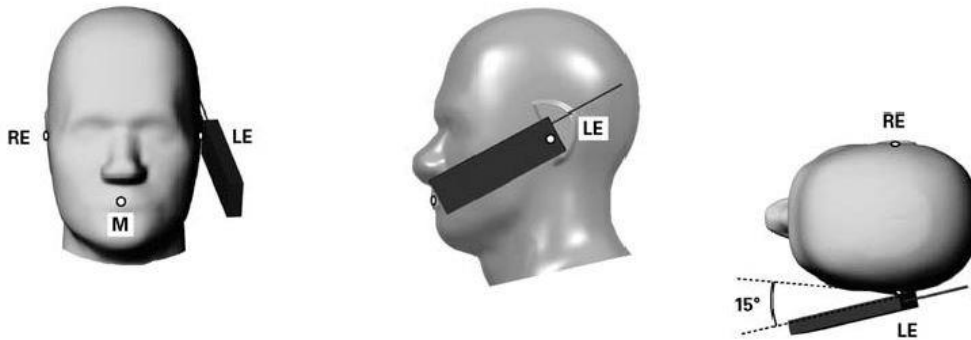


Fig 9.3.1 Tilt position. The reference points for the right ear (RE), left ear (LE), and mouth (M), which define the Reference Plane for handset positioning, are indicated.

10.4 Body Worn Accessory

Body-worn operating configurations are tested with the belt-clips and holsters attached to the device and positioned against a flat phantom in a normal use configuration (see Figure 9.4). Per KDB648474 D04v01r03, body-worn accessory exposure is typically related to voice mode operations when handsets are carried in body-worn accessories. The body-worn accessory procedures in FCC KDB 447498 D01v06 should be used to test for body-worn accessory SAR compliance, without a headset connected to it. This enables the test results for such configuration to be compatible with that required for hotspot mode when the body-worn accessory test separation distance is greater than or equal to that required for hotspot mode, when applicable. When the reported SAR for body-worn accessory, measured without a headset connected to the handset is > 1.2 W/kg, the highest reported SAR configuration for that wireless mode and frequency band should be repeated for that body-worn accessory with a handset attached to the handset.

Accessories for body-worn operation configurations are divided into two categories: those that do not contain metallic components and those that do contain metallic components. When multiple accessories that do not contain metallic components are supplied with the device, the device is tested with only the accessory that dictates the closest spacing to the body. Then multiple accessories that contain metallic components are test with the device with each accessory. If multiple accessories share an identical metallic component (i.e. the same metallic belt-chip used with different holsters with no other metallic components) only the accessory that dictates the closest spacing to the body is tested.

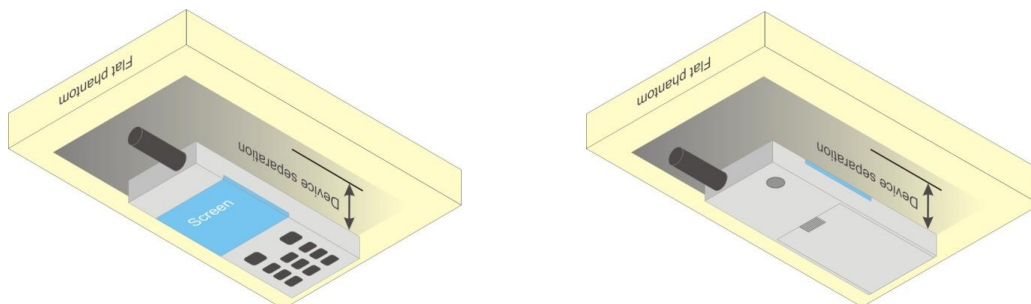


Fig 9.4 Body Worn Position



10.5 Product Specific Exposure

For smart phones with a display diagonal dimension > 15.0 cm or an overall diagonal dimension > 16.0 cm that provide similar mobile web access and multimedia support found in mini-tablets or UMPC mini-tablets that support voice calls next to the ear, According to KDB648474 D04v01r03, the following phablet procedures should be applied to evaluate SAR compliance for each applicable wireless modes and frequency band. Devices marketed as phablets, regardless of form factors and operating characteristics must be tested as a phablet to determine SAR compliance

1. The normally required head and body-worn accessory SAR test procedures for handsets, including hotspot mode, must be applied.
2. The UMPC mini-tablet procedures must also be applied to test the SAR of all surfaces and edges with an antenna located at ≤ 25 mm from that surface or edge, in direct contact with a flat phantom, for 10-g extremity SAR according to the body-equivalent tissue dielectric parameters in KDB 865664 to address interactive hand use exposure conditions.6 The UMPC mini-tablet 1-g SAR at 5 mm is not required. When hotspot mode applies, 10-g extremity SAR is required only for the surfaces and edges with hotspot mode 1-g reported SAR > 1.2 W/kg.

10.6 Wireless Router

Some battery-operated handsets have the capability to transmit and receive user through simultaneous transmission of WIFI simultaneously with a separate licensed transmitter. The FCC has provided guidance in FCC KDB Publication 941225 D06 v02r01 where SAR test considerations for handsets ($L \times W \geq 9$ cm x 5 cm) are based on a composite test separation distance of 10mm from the front, back and edges of the device containing transmitting antennas within 2.5cm of their edges, determined from general mixed use conditions for this type of devices. Since the hotspot SAR results may overlap with the body-worn accessory SAR requirements, the more conservative configurations can be considered, thus excluding some body-worn accessory SAR tests.

When the user enables the personal wireless router functions for the handset, actual operations include simultaneous transmission of both the WIFI transmitter and another licensed transmitter. Both transmitters often do not transmit at the same transmitting frequency and thus cannot be evaluated for SAR under actual use conditions due to the limitations of the SAR assessment probes. Therefore, SAR must be evaluated for each frequency transmission and mode separately and spatially summed with the WIFI transmitter according to FCC KDB Publication 447498 D01v06 publication procedures. The "Portable Hotspot" feature on the handset was NOT activated during SAR assessments, to ensure the SAR measurements were evaluated for a single transmission frequency RF signal at a time.



11. Conducted RF Output Power (Unit: dBm)

<GSM Conducted Power>

- For DTM multi-slot class mode, the device was linked with base station simulator (Agilent E5515C) and transmit maximum power on maximum number of TX slots, i.e. one CS timeslot, and additional PS timeslots (1 for DTM class 5 and 9, 2 for DTM class 11) in one TDMA frame.
- Agilent E5515C was used to setup the device operated under DTM mode for power measurement and SAR testing. For conducted power, the power of the burst for voice and the power of the bursts for data was reported separately in the table above, and the frame-average power is derived below to determine SAR testing.

$$DTM \text{ frame average power (dBm)} = 10 * \log [\sum(\text{power of each slot, in mW})/8]$$
- Per KDB 447498 D01v06, the maximum output power channel is used for SAR testing and for further SAR test reduction.
- Per KDB 941225 D01v03r01, for SAR test reduction for GSM / GPRS / EDGE / DTM modes is determined by the source-based time-averaged output power including tune-up tolerance. The mode with highest specified time-averaged output power should be tested for SAR compliance in the applicable exposure conditions. For modes with the same specified maximum output power and tolerance, the higher number time-slot configuration should be tested. Therefore, the GPRS (4Tx slots) for GSM850/GSM1900 is considered as the primary mode.
- Other configurations of GSM / GPRS / EDGE / DTM are considered as secondary modes. The 3G SAR test reduction procedure is applied, when the maximum output power and tune-up tolerance specified for production units in a secondary mode is $\leq \frac{1}{4}$ dB higher than the primary mode, SAR measurement is not required for the secondary mode
- Power reduction which is triggered by hotspot mode is implemented in GSM1900 band, for hotspot mode SAR testing EUT was set in reduced power mode and GPRS 4Tx slot due to its highest frame-average power.

<Default Power Mode>

GSM850		Burst Average Power (dBm)			Tune-up Limit (dBm)	Frame-Average Power (dBm)			Tune-up Limit (dBm)
TX Channel		128	189	251		128	189	251	
Frequency (MHz)		824.2	836.4	848.8		824.2	836.4	848.8	
GSM 1 Tx slot		32.61	32.78	32.44	33.50	23.61	23.78	23.44	24.50
GPRS 1 Tx slot		32.64	32.80	32.38	33.50	23.64	23.80	23.38	24.50
GPRS 2 Tx slots		30.57	30.29	30.58	31.00	24.57	24.29	24.58	25.00
GPRS 3 Tx slots		28.48	28.75	28.86	29.20	24.22	24.49	24.60	24.94
GPRS 4 Tx slots		26.94	27.35	27.33	28.00	23.94	24.35	24.33	25.00
EDGE 1 Tx slot		27.24	26.95	26.69	27.50	18.24	17.95	17.69	18.50
EDGE 2 Tx slots		26.75	26.54	26.33	27.30	20.75	20.54	20.33	21.30
EDGE 3 Tx slots		26.53	26.38	26.17	27.10	22.27	22.12	21.91	22.84
EDGE 4 Tx slots		26.53	26.33	26.34	26.90	23.53	23.33	23.34	23.90
DTM Multi-slot class 5	GSM 1 Tx slot	30.51	30.08	30.17	31.00	24.26	23.84	23.93	24.98
	GPRS 1 Tx slot	30.03	29.62	29.72	31.00				
DTM Multi-slot class 9	GSM 1 Tx slot	30.50	30.08	30.20	31.00	24.24	23.83	23.95	24.98
	GPRS 1 Tx slot	30.00	29.61	29.73	31.00				
DTM Multi-slot class 11	GSM 1 Tx slot	28.46	28.65	28.59	29.20	23.89	24.10	24.02	24.94
	GPRS 2 Tx slots	27.98	28.21	28.12	29.20				
DTM Multi-slot class 5	GSM 1 Tx slot	29.32	29.67	29.55	31.00	22.17	22.45	22.10	23.51
	EDGE 1 Tx slot	26.67	26.81	25.99	27.30				
DTM Multi-slot class 9	GSM 1 Tx slot	29.97	30.17	29.99	31.00	22.54	22.68	22.30	23.51
	EDGE 1 Tx slot	26.46	26.45	25.59	27.30				
DTM Multi-slot class 11	GSM 1 Tx slot	29.18	28.08	28.18	29.20	23.28	22.86	22.46	23.66
	EDGE 2 Tx slots	26.41	26.55	25.75	27.10				



GSM1900		Burst Average Power (dBm)			Tune-up Limit (dBm)	Frame-Average Power (dBm)			Tune-up Limit (dBm)
TX Channel		512	661	810		512	661	810	
Frequency (MHz)		1850.2	1880	1909.8		1850.2	1880	1909.8	
GSM 1 Tx slot		29.84	29.94	29.90	30.50	20.84	20.94	20.90	21.50
GPRS 1 Tx slot		29.78	30.10	30.16	30.50	20.78	21.10	21.16	21.50
GPRS 2 Tx slots		27.10	27.40	27.17	27.50	21.10	21.40	21.17	21.50
GPRS 3 Tx slots		25.70	25.44	25.76	26.00	21.44	21.18	21.50	21.74
GPRS 4 Tx slots		24.56	24.99	24.73	25.00	21.56	21.99	21.73	22.00
EDGE 1 Tx slot		25.58	25.11	25.25	26.00	16.58	16.11	16.25	17.00
EDGE 2 Tx slots		25.35	25.02	25.13	26.00	19.35	19.02	19.13	20.00
EDGE 3 Tx slots		25.38	25.30	24.95	25.50	21.12	21.04	20.69	21.24
EDGE 4 Tx slots		24.73	24.60	24.17	25.00	21.73	21.60	21.17	22.00
DTM Multi-slot class 5	GSM 1 Tx slot	27.20	27.46	27.29	27.50	20.91	21.16	20.97	21.48
	GPRS 1 Tx slot	26.65	26.89	26.67	27.50				
DTM Multi-slot class 9	GSM 1 Tx slot	27.09	27.27	27.14	27.50	20.79	20.96	20.83	21.48
	GPRS 1 Tx slot	26.52	26.68	26.54	27.50				
DTM Multi-slot class 11	GSM 1 Tx slot	25.55	25.98	25.68	26.00	20.82	21.38	20.93	21.74
	GPRS 2 Tx slots	24.83	25.46	24.92	26.00				
DTM Multi-slot class 5	GSM 1 Tx slot	27.04	27.13	26.98	27.50	20.02	20.17	19.81	20.79
	EDGE 1 Tx slot	24.74	24.98	24.27	26.00				
DTM Multi-slot class 9	GSM 1 Tx slot	26.56	27.43	26.48	27.50	19.89	20.47	19.77	20.79
	EDGE 1 Tx slot	25.14	25.28	24.96	26.00				
DTM Multi-slot class 11	GSM 1 Tx slot	25.07	25.52	25.12	26.00	20.61	21.00	20.84	21.41
	EDGE 2 Tx slots	24.77	25.13	25.09	25.50				

<Reduced Power Mode>

GSM1900		Burst Average Power (dBm)			Tune-up Limit (dBm)	Frame-Average Power (dBm)			Tune-up Limit (dBm)
TX Channel		512	661	810		512	661	810	
Frequency (MHz)		1850.2	1880	1909.8		1850.2	1880	1909.8	
GSM 1 Tx slot		28.87	29.10	28.89	29.50	19.87	20.10	19.89	20.50
GPRS 1 Tx slot		28.84	29.09	28.99	29.50	19.84	20.09	19.99	20.50
GPRS 2 Tx slots		26.28	26.49	26.47	26.50	20.28	20.49	20.47	21.00
GPRS 3 Tx slots		24.92	24.89	24.86	25.00	20.66	20.63	20.60	20.94
GPRS 4 Tx slots		23.60	23.70	23.26	24.00	20.60	20.70	20.26	21.00
EDGE 1 Tx slot		24.63	24.87	25.00	25.00	15.63	15.87	16.00	16.00
EDGE 2 Tx slots		24.51	24.77	25.00	25.00	18.51	18.77	19.00	19.00
EDGE 3 Tx slots		23.82	24.16	24.35	24.50	19.56	19.90	20.09	20.24
EDGE 4 Tx slots		23.22	23.49	23.47	24.00	20.22	20.49	20.47	21.00
DTM Multi-slot class 5	GSM 1 Tx slot	26.25	26.52	26.43	27.00	20.03	20.29	20.23	20.98
	GPRS 1 Tx slot	25.85	26.10	26.06	27.00				
DTM Multi-slot class 9	GSM 1 Tx slot	26.26	26.53	26.49	27.00	19.97	19.95	19.88	20.98
	GPRS 1 Tx slot	25.70	25.32	25.23	27.00				
DTM Multi-slot class 11	GSM 1 Tx slot	24.84	24.90	24.79	25.20	20.31	20.36	20.25	20.94
	GPRS 2 Tx slots	24.43	24.48	24.37	25.20				
DTM Multi-slot class 5	GSM 1 Tx slot	26.26	26.54	26.48	27.00	19.24	19.54	19.67	20.09
	EDGE 1 Tx slot	23.96	24.29	24.73	25.00				
DTM Multi-slot class 9	GSM 1 Tx slot	25.85	26.17	26.16	27.00	19.12	19.54	19.58	20.09
	EDGE 1 Tx slot	24.30	24.84	24.96	25.00				
DTM Multi-slot class 11	GSM 1 Tx slot	24.55	24.36	24.48	25.20	19.76	19.88	20.09	20.49
	EDGE 2 Tx slots	23.73	24.02	24.28	24.50				

<WCDMA Conducted Power>

1. The following tests were conducted according to the test requirements outlines in 3GPP TS 34.121 specification.
2. The procedures in KDB 941225 D01v03r01 are applied for 3GPP Rel. 6 HSPA to configure the device in the required sub-test mode(s) to determine SAR test exclusion.
3. For DC-HSDPA, the device was configured according to the H-Set 12, Fixed Reference Channel (FRC) configuration in Table C.8.1.12 of 3GPP TS 34.121-1, with the primary and the secondary serving HS-DSCH Cell enabled during the power measurement.

A summary of these settings are illustrated below:

HSDPA Setup Configuration:

- a. The EUT was connected to Base Station Agilent E5515C referred to the Setup Configuration.
- b. The RF path losses were compensated into the measurements.
- c. A call was established between EUT and Base Station with following setting:
 - i. Set Gain Factors (β_c and β_d) and parameters were set according to each
 - ii. Specific sub-test in the following table, C10.1.4, quoted from the TS 34.121
 - iii. Set RMC 12.2Kbps + HSDPA mode.
 - iv. Set Cell Power = -86 dBm
 - v. Set HS-DSCH Configuration Type to FRC (H-set 1, QPSK)
 - vi. Select HSDPA Uplink Parameters
 - vii. Set Delta ACK, Delta NACK and Delta CQI = 8
 - viii. Set Ack-Nack Repetition Factor to 3
 - ix. Set CQI Feedback Cycle (k) to 4 ms
 - x. Set CQI Repetition Factor to 2
 - xi. Power Ctrl Mode = All Up bits
- d. The transmitted maximum output power was recorded.

Table C.10.1.4: β values for transmitter characteristics tests with HS-DPCCH

Sub-test	β_c	β_d	β_d (SF)	β_c/β_d	β_{HS} (Note 1, Note 2)	CM (dB) (Note 3)	MPR (dB) (Note 3)
1	2/15	15/15	64	2/15	4/15	0.0	0.0
2	12/15 (Note 4)	15/15 (Note 4)	64	12/15 (Note 4)	24/15	1.0	0.0
3	15/15	8/15	64	15/8	30/15	1.5	0.5
4	15/15	4/15	64	15/4	30/15	1.5	0.5

Note 1: $\Delta_{ACK}, \Delta_{NACK}$ and $\Delta_{CQI} = 30/15$ with $\beta_{HS} = 30/15 * \beta_c$.

Note 2: For the HS-DPCCH power mask requirement test in clause 5.2C, 5.7A, and the Error Vector Magnitude (EVM) with HS-DPCCH test in clause 5.13.1A, and HSDPA EVM with phase discontinuity in clause 5.13.1AA, Δ_{ACK} and $\Delta_{NACK} = 30/15$ with $\beta_{HS} = 30/15 * \beta_c$, and $\Delta_{CQI} = 24/15$ with $\beta_{HS} = 24/15 * \beta_c$.

Note 3: CM = 1 for $\beta_c/\beta_d = 12/15, \beta_{HS}/\beta_c = 24/15$. For all other combinations of DPCCH, DPDCCH and HS-DPCCH the MPR is based on the relative CM difference. This is applicable for only UEs that support HSDPA in release 6 and later releases.

Note 4: For subtest 2 the β_c/β_d ratio of 12/15 for the TFC during the measurement period (TF1, TF0) is achieved by setting the signalled gain factors for the reference TFC (TF1, TF1) to $\beta_c = 11/15$ and $\beta_d = 15/15$.

Setup Configuration

HSUPA Setup Configuration:

- a. The EUT was connected to Base Station Agilent E5515C referred to the Setup Configuration.
- b. The RF path losses were compensated into the measurements.
- c. A call was established between EUT and Base Station with following setting * :
 - i. Call Configs = 5.2B, 5.9B, 5.10B, and 5.13.2B with QPSK
 - ii. Set the Gain Factors (β_c and β_d) and parameters (AG Index) were set according to each specific sub-test in the following table, C11.1.3, quoted from the TS 34.121
 - iii. Set Cell Power = -86 dBm
 - iv. Set Channel Type = 12.2k + HSPA
 - v. Set UE Target Power
 - vi. Power Ctrl Mode= Alternating bits
 - vii. Set and observe the E-TFCl
 - viii. Confirm that E-TFCl is equal to the target E-TFCl of 75 for sub-test 1, and other subtest's E-TFCl
- d. The transmitted maximum output power was recorded.

Table C.11.1.3: β values for transmitter characteristics tests with HS-DPCCH and E-DCH

Sub-test	β_c	β_d	β_d (SF)	β_c/β_d	β_{HS} (Note1)	β_{ec}	β_{ed} (Note 4) (Note 5)	β_{ed} (SF)	β_{ed} (Codes)	CM (dB) (Note 2)	MPR (dB) (Note 2) (Note 6)	AG Index (Note 5)	E-TFCl
1	11/15 (Note 3)	15/15 (Note 3)	64	11/15 (Note 3)	22/15	209/25	1309/225	4	1	1.0	0.0	20	75
2	6/15	15/15	64	6/15	12/15	12/15	94/75	4	1	3.0	2.0	12	67
3	15/15	9/15	64	15/9	30/15	30/15	$\beta_{ed1}: 47/15$ $\beta_{ed2}: 47/15$	4 4	2	2.0	1.0	15	92
4	2/15	15/15	64	2/15	4/15	2/15	56/75	4	1	3.0	2.0	17	71
5	15/15	0	-	-	5/15	5/15	47/15	4	1	1.0	0.0	12	67

Note 1: For sub-test 1 to 4, Δ_{ACK} , Δ_{NACK} and $\Delta_{CQI} = 30/15$ with $\beta_{hs} = 30/15 * \beta_c$. For sub-test 5, Δ_{ACK} , Δ_{NACK} and $\Delta_{CQI} = 5/15$ with $\beta_{hs} = 5/15 * \beta_c$.

Note 2: CM = 1 for $\beta_c/\beta_d = 12/15$, $\beta_{hs}/\beta_c = 24/15$. For all other combinations of DPDCH, DPCCH, HS-DPCCH, E-DPDCH and E-DPCCH the MPR is based on the relative CM difference.

Note 3: For subtest 1 the β_c/β_d ratio of 11/15 for the TFC during the measurement period (TF1, TF0) is achieved by setting the signalled gain factors for the reference TFC (TF1, TF1) to $\beta_c = 10/15$ and $\beta_d = 15/15$.

Note 4: In case of testing by UE using E-DPDCH Physical Layer category 1, Sub-test 3 is omitted according to TS25.306 Table 5.1g.

Note 5: β_{ed} can not be set directly; it is set by Absolute Grant Value.

Note 6: For subtests 2, 3 and 4, UE may perform E-DPDCH power scaling at max power which could results in slightly smaller MPR values.

Setup Configuration

DC-HSDPA 3GPP release 8 Setup Configuration:

- a. The EUT was connected to Base Station Agilent E5515C referred to the Setup Configuration below
- b. The RF path losses were compensated into the measurements.
- c. A call was established between EUT and Base Station with following setting:
 - i. Set RMC 12.2Kbps + HSDPA mode.
 - ii. Set Cell Power = -25 dBm
 - iii. Set HS-DSCH Configuration Type to FRC (H-set 12, QPSK)
 - iv. Select HSDPA Uplink Parameters
 - v. Set Gain Factors (β_c and β_d) and parameters were set according to each Specific sub-test in the following table, C10.1.4, quoted from the TS 34.121
 - a). Subtest 1: $\beta_c/\beta_d=2/15$
 - b). Subtest 2: $\beta_c/\beta_d=12/15$
 - c). Subtest 3: $\beta_c/\beta_d=15/8$
 - d). Subtest 4: $\beta_c/\beta_d=15/4$
 - vi. Set Delta ACK, Delta NACK and Delta CQI = 8
 - vii. Set Ack-Nack Repetition Factor to 3
 - viii. Set CQI Feedback Cycle (k) to 4 ms
 - ix. Set CQI Repetition Factor to 2
 - x. Power Ctrl Mode = All Up bits
- d. The transmitted maximum output power was recorded.

The following tests were conducted according to the test requirements outlines in 3GPP TS 34.121 specification. A summary of these settings are illustrated below:

C.8.1.12 Fixed Reference Channel Definition H-Set 12

Table C.8.1.12: Fixed Reference Channel H-Set 12

Parameter	Unit	Value
Nominal Avg. Inf. Bit Rate	kbps	60
Inter-TTI Distance	TTI's	1
Number of HARQ Processes	Processes	6
Information Bit Payload (N_{INF})	Bits	120
Number Code Blocks	Blocks	1
Binary Channel Bits Per TTI	Bits	960
Total Available SML's in UE	SML's	19200
Number of SML's per HARQ Proc.	SML's	3200
Coding Rate		0.15
Number of Physical Channel Codes	Codes	1
Modulation		QPSK
Note 1: The RMC is intended to be used for DC-HSDPA mode and both cells shall transmit with identical parameters as listed in the table. Note 2: Maximum number of transmission is limited to 1, i.e., retransmission is not allowed. The redundancy and constellation version 0 shall be used.		

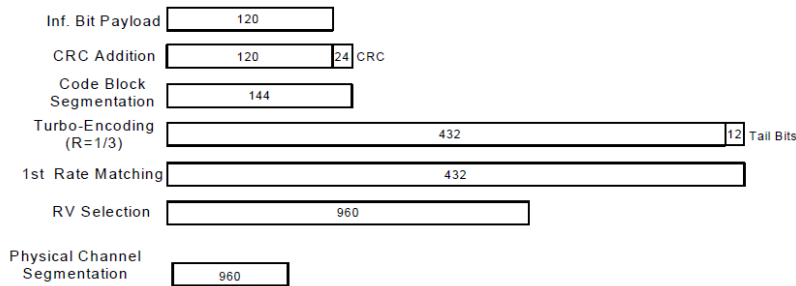


Figure C.8.19: Coding rate for Fixed reference Channel H-Set 12 (QPSK)

Setup Configuration



<WCDMA Conducted Power>

General Note:

1. Per KDB 941225 D01v03r01, for SAR testing is measured using a 12.2 kbps RMC with TPC bits configured to all "1's".
2. Per KDB 941225 D01v03r01, RMC 12.2kbps setting is used to evaluate SAR. The maximum output power and tune-up tolerance specified for production units in HSDPA / HSUPA / DC-HSDPA is $\leq \frac{1}{4}$ dB higher than RMC 12.2Kbps or when the highest reported SAR of the RMC12.2Kbps is scaled by the ratio of specified maximum output power and tune-up tolerance of HSDPA / HSUPA / DC-HSDPA to RMC12.2Kbps and the adjusted SAR is ≤ 1.2 W/kg, SAR measurement is not required for HSDPA / HSUPA / DC-HSDPA, and according to the following RF output power, the output power results of the secondary modes (HSUPA, HSDPA, DC-HSDPA) are less than $\frac{1}{4}$ dB higher than the primary modes; therefore, SAR measurement is not required for HSDPA / HSUPA / DC-HSDPA.

<Default Power Mode>

Band		WCDMA II			Tune-up Limit (dBm)	WCDMA V			Tune-up Limit (dBm)
TX Channel		9262	9400	9538		4132	4182	4233	
Rx Channel		9662	9800	9938		4357	4407	4458	
Frequency (MHz)		1852.4	1880	1907.6		826.4	836.4	846.6	
3GPP Rel 99	AMR 12.2Kbps	22.28	22.30	22.42	23.00	23.70	23.72	23.68	24.50
3GPP Rel 99	RMC 12.2Kbps	22.49	22.41	22.69	23.00	23.71	23.77	23.74	24.50
3GPP Rel 6	HSDPA Subtest-1	21.42	21.33	21.50	22.00	21.49	21.61	21.60	23.50
3GPP Rel 6	HSDPA Subtest-2	21.45	21.33	21.55	22.00	21.59	21.66	21.66	23.50
3GPP Rel 6	HSDPA Subtest-3	20.93	20.89	21.04	21.50	21.56	21.65	21.66	23.00
3GPP Rel 6	HSDPA Subtest-4	20.92	20.88	21.06	21.50	21.55	21.62	21.62	23.00
3GPP Rel 8	DC-HSDPA Subtest-1	21.35	21.33	21.40	22.00	21.59	21.65	21.57	23.50
3GPP Rel 8	DC-HSDPA Subtest-2	21.41	21.28	21.49	22.00	21.57	21.76	21.61	23.50
3GPP Rel 8	DC-HSDPA Subtest-3	20.92	20.87	21.04	21.50	21.56	21.66	21.56	23.00
3GPP Rel 8	DC-HSDPA Subtest-4	20.86	20.82	21.02	21.50	21.65	21.54	21.64	23.00
3GPP Rel 6	HSUPA Subtest-1	21.47	21.33	21.54	22.00	22.62	22.73	22.79	23.00
3GPP Rel 6	HSUPA Subtest-2	19.42	19.37	19.51	20.00	20.77	20.85	20.76	21.00
3GPP Rel 6	HSUPA Subtest-3	20.43	20.36	20.51	21.00	21.72	21.63	21.72	22.00
3GPP Rel 6	HSUPA Subtest-4	19.39	19.48	19.58	20.00	20.76	20.80	20.70	21.00
3GPP Rel 6	HSUPA Subtest-5	21.50	21.30	21.60	22.00	22.70	22.70	22.70	23.00

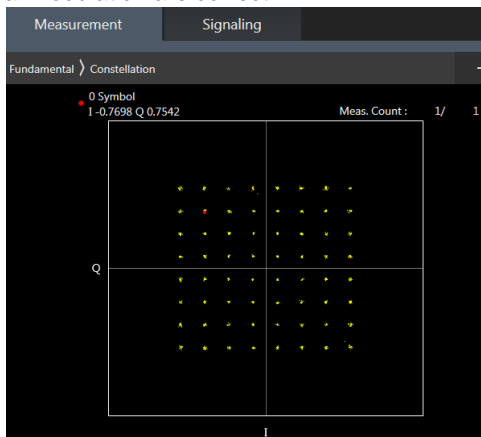
<Reduced Power Mode>

Band		WCDMA II			Tune-up Limit (dBm)
TX Channel		9262	9400	9538	
Rx Channel		9662	9800	9938	
Frequency (MHz)		1852.4	1880	1907.6	
3GPP Rel 99	AMR 12.2Kbps	20.32	20.25	20.42	20.50
3GPP Rel 99	RMC 12.2Kbps	20.42	20.29	20.50	20.50
3GPP Rel 6	HSDPA Subtest-1	19.41	19.33	19.48	19.50
3GPP Rel 6	HSDPA Subtest-2	19.44	19.35	19.47	19.50
3GPP Rel 6	HSDPA Subtest-3	18.97	18.85	18.98	19.00
3GPP Rel 6	HSDPA Subtest-4	18.94	18.86	18.97	19.00
3GPP Rel 8	DC-HSDPA Subtest-1	19.35	19.33	19.46	19.50
3GPP Rel 8	DC-HSDPA Subtest-2	19.36	19.25	19.41	19.50
3GPP Rel 8	DC-HSDPA Subtest-3	18.90	18.82	18.93	19.00
3GPP Rel 8	DC-HSDPA Subtest-4	18.88	18.80	18.95	19.00
3GPP Rel 6	HSUPA Subtest-1	19.43	19.33	19.59	20.00
3GPP Rel 6	HSUPA Subtest-2	17.49	17.34	17.61	18.00
3GPP Rel 6	HSUPA Subtest-3	18.44	18.33	18.58	19.00
3GPP Rel 6	HSUPA Subtest-4	17.37	17.34	17.60	18.00
3GPP Rel 6	HSUPA Subtest-5	19.50	19.40	19.60	20.00

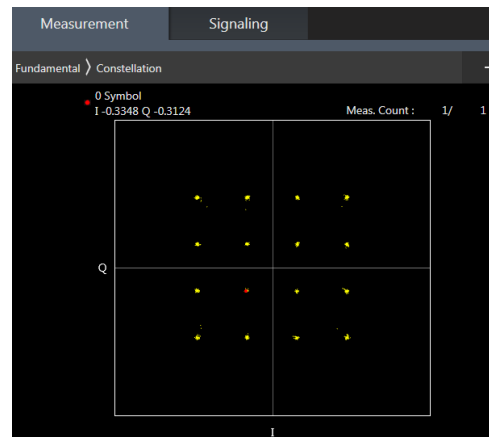
<LTE Conducted Power>

General Note:

1. Anritsu MT8820C base station simulator was used to setup the connection with EUT; the frequency band, channel bandwidth, RB allocation configuration, modulation type are set in the base station simulator to configure EUT transmitting at maximum power and at different configurations which are requested to be reported to FCC, for conducted power measurement and SAR testing.
2. Per KDB 941225 D05v02r05, when a properly configured base station simulator is used for the SAR and power measurements, spectrum plots for each RB allocation and offset configuration is not required.
3. Per KDB 941225 D05v02r05, start with the largest channel bandwidth and measure SAR for QPSK with 1 RB allocation, using the RB offset and required test channel combination with the highest maximum output power for RB offsets at the upper edge, middle and lower edge of each required test channel.
4. Per KDB 941225 D05v02r05, 50% RB allocation for QPSK SAR testing follows 1RB QPSK allocation procedure.
5. Per KDB 941225 D05v02r05, For QPSK with 100% RB allocation, SAR is not required when the highest maximum output power for 100 % RB allocation is less than the highest maximum output power in 50% and 1 RB allocations and the highest reported SAR for 1 RB and 50% RB allocation are ≤ 0.8 W/kg. Otherwise, SAR is measured for the highest output power channel; and if the reported SAR is > 1.45 W/kg, the remaining required test channels must also be tested.
6. Per KDB 941225 D05v02r05, 16QAM output power for each RB allocation configuration is $>$ not $\frac{1}{2}$ dB higher than the same configuration in QPSK and the reported SAR for the QPSK configuration is ≤ 1.45 W/kg; Per KDB 941225 D05v02r05, 16QAM SAR testing is not required.
7. Per KDB 941225 D05v02r05, Smaller bandwidth output power for each RB allocation configuration is $>$ not $\frac{1}{2}$ dB higher than the same configuration in the largest supported bandwidth, and the reported SAR for the largest supported bandwidth is ≤ 1.45 W/kg; Per KDB 941225 D05v02r05, smaller bandwidth SAR testing is not required.
8. For LTE B5 the maximum bandwidth does not support three non-overlapping channels, per KDB 941225 D05v02r05, when a device supports overlapping channel assignment in a channel bandwidth configuration, the middle channel of the group of overlapping channels should be selected for testing.
9. According to 2017 TCB workshop, for 64 QAM and 16 QAM should be verified by checking the signal constellation with a call box to avoid incorrect maximum power levels due to MPR and other requirements associated with signal modulation, and the following figure is taken from the "Fundamental Measurement >> Modulation Analysis >> constellation" mode of the device connect to the MT8821C base station, therefore, the device 64QAM and 16QAM signal modulation are correct.



64QAM



16QAM



<Default Power Mode>

<LTE Band 2>

BW [MHz]	Modulation	RB Size	RB Offset	Power Low Ch. / Freq.	Power Middle Ch. / Freq.	Power High Ch. / Freq.	Tune-up limit (dBm)	MPR (dB)
Channel				18700	18900	19100		
Frequency (MHz)				1860	1880	1900		
20	QPSK	1	0	22.54	22.59	22.41	23	0
20	QPSK	1	49	22.37	22.44	22.29		
20	QPSK	1	99	22.38	22.42	22.26		
20	QPSK	50	0	21.45	21.44	21.31	22	1
20	QPSK	50	24	21.44	21.43	21.28		
20	QPSK	50	50	21.44	21.38	21.22		
20	QPSK	100	0	21.36	21.47	21.27		
20	16QAM	1	0	21.86	21.88	21.73	22	1
20	16QAM	1	49	21.80	21.85	21.74		
20	16QAM	1	99	21.83	21.82	21.61		
20	16QAM	50	0	20.55	20.55	20.42	21	2
20	16QAM	50	24	20.52	20.54	20.41		
20	16QAM	50	50	20.58	20.51	20.33		
20	16QAM	100	0	20.60	20.53	20.38		
20	64QAM	1	0	20.74	20.81	20.64	21	2
20	64QAM	1	49	20.74	20.76	20.62		
20	64QAM	1	99	20.74	20.78	20.55		
20	64QAM	50	0	19.55	19.58	19.42	20	3
20	64QAM	50	24	19.55	19.56	19.49		
20	64QAM	50	50	19.56	19.49	19.44		
20	64QAM	100	0	19.60	19.51	19.44		
Channel				18675	18900	19125		
Frequency (MHz)				1857.5	1880	1902.5		
15	QPSK	1	0	22.30	22.43	22.31	23	0
15	QPSK	1	37	22.30	22.40	22.34		
15	QPSK	1	74	22.18	22.28	22.26		
15	QPSK	36	0	21.35	21.42	21.29	22	1
15	QPSK	36	20	21.31	21.41	21.32		
15	QPSK	36	39	21.27	21.35	21.33		
15	QPSK	75	0	21.31	21.41	21.30		
15	16QAM	1	0	21.69	21.83	21.71	22	1
15	16QAM	1	37	21.70	21.79	21.82		
15	16QAM	1	74	21.57	21.71	21.57		
15	16QAM	36	0	20.43	20.56	20.49	21	2
15	16QAM	36	20	20.46	20.56	20.45		
15	16QAM	36	39	20.42	20.51	20.52		
15	16QAM	75	0	20.41	20.55	20.41		
15	64QAM	1	0	20.62	20.78	20.65	21	2
15	64QAM	1	37	20.59	20.73	20.72		
15	64QAM	1	74	20.54	20.64	20.56		
15	64QAM	36	0	19.47	19.58	19.51	20	3
15	64QAM	36	20	19.48	19.61	19.52		
15	64QAM	36	39	19.42	19.54	19.54		
15	64QAM	75	0	19.41	19.54	19.46		



Channel				18650	18900	19150	Tune-up limit (dBm)	MPR (dB)
Frequency (MHz)				1855	1880	1905		
10	QPSK	1	0	22.40	22.48	22.27	23	0
10	QPSK	1	25	22.27	22.40	22.36		
10	QPSK	1	49	22.28	22.38	22.28		
10	QPSK	25	0	21.33	21.40	21.25	22	1
10	QPSK	25	12	21.33	21.42	21.36		
10	QPSK	25	25	21.26	21.35	21.30		
10	QPSK	50	0	21.29	21.37	21.23	22	1
10	16QAM	1	0	21.79	21.92	21.68		
10	16QAM	1	25	21.70	21.83	21.76		
10	16QAM	1	49	21.68	21.79	21.60	21	2
10	16QAM	25	0	20.42	20.54	20.42		
10	16QAM	25	12	20.40	20.53	20.52		
10	16QAM	25	25	20.38	20.47	20.42	21	2
10	16QAM	50	0	20.44	20.52	20.38		
10	64QAM	1	0	20.69	20.83	20.65		
10	64QAM	1	25	20.60	20.72	20.70	21	2
10	64QAM	1	49	20.62	20.74	20.56		
10	64QAM	25	0	19.44	19.55	19.44		
10	64QAM	25	12	19.44	19.55	19.55	20	3
10	64QAM	25	25	19.39	19.49	19.45		
10	64QAM	50	0	19.42	19.54	19.39		
Channel				18625	18900	19175	Tune-up limit (dBm)	MPR (dB)
Frequency (MHz)				1852.5	1880	1907.5		
5	QPSK	1	0	22.31	22.37	22.31	23	0
5	QPSK	1	12	22.29	22.41	22.31		
5	QPSK	1	24	22.25	22.34	22.25		
5	QPSK	12	0	21.32	21.41	21.32	22	1
5	QPSK	12	7	21.36	21.43	21.37		
5	QPSK	12	13	21.27	21.36	21.32		
5	QPSK	25	0	21.29	21.36	21.31	22	1
5	16QAM	1	0	21.63	21.78	21.69		
5	16QAM	1	12	21.65	21.81	21.67		
5	16QAM	1	24	21.61	21.73	21.54	21	2
5	16QAM	12	0	20.45	20.57	20.50		
5	16QAM	12	7	20.44	20.56	20.52		
5	16QAM	12	13	20.44	20.49	20.44	21	2
5	16QAM	25	0	20.42	20.49	20.44		
5	64QAM	1	0	20.57	20.73	20.65		
5	64QAM	1	12	20.60	20.74	20.63	21	2
5	64QAM	1	24	20.51	20.67	20.53		
5	64QAM	12	0	19.49	19.60	19.58		
5	64QAM	12	7	19.50	19.60	19.58	20	3
5	64QAM	12	13	19.45	19.58	19.50		
5	64QAM	25	0	19.40	19.50	19.49		



Channel				18615	18900	19185	Tune-up limit (dBm)	MPR (dB)
Frequency (MHz)				1851.5	1880	1908.5		
3	QPSK	1	0	22.28	22.35	22.31	23	0
3	QPSK	1	8	22.29	22.37	22.33		
3	QPSK	1	14	22.25	22.35	22.29		
3	QPSK	8	0	21.28	21.38	21.31	22	1
3	QPSK	8	4	21.33	21.44	21.36		
3	QPSK	8	7	21.30	21.37	21.32		
3	QPSK	15	0	21.29	21.35	21.33		
3	16QAM	1	0	21.58	21.73	21.65	22	1
3	16QAM	1	8	21.63	21.81	21.64		
3	16QAM	1	14	21.56	21.55	21.55		
3	16QAM	8	0	20.45	20.56	20.33	21	2
3	16QAM	8	4	20.51	20.59	20.52		
3	16QAM	8	7	20.45	20.40	20.46		
3	16QAM	15	0	20.41	20.48	20.47		
3	64QAM	1	0	20.56	20.71	20.61	21	2
3	64QAM	1	8	20.59	20.74	20.61		
3	64QAM	1	14	20.53	20.67	20.59		
3	64QAM	8	0	19.48	19.39	19.55	20	3
3	64QAM	8	4	19.50	19.63	19.56		
3	64QAM	8	7	19.46	19.57	19.53		
3	64QAM	15	0	19.26	19.50	19.47		
Channel				18607	18900	19193	Tune-up limit (dBm)	MPR (dB)
Frequency (MHz)				1850.7	1880	1909.3		
1.4	QPSK	1	0	22.23	22.31	22.24	23	0
1.4	QPSK	1	3	22.28	22.39	22.33		
1.4	QPSK	1	5	22.20	22.31	22.23		
1.4	QPSK	3	0	22.28	22.34	22.29		
1.4	QPSK	3	1	22.32	22.39	22.32		
1.4	QPSK	3	3	22.26	22.34	22.29		
1.4	QPSK	6	0	21.25	21.32	21.28	22	1
1.4	16QAM	1	0	21.56	21.73	21.58	22	1
1.4	16QAM	1	3	21.64	21.79	21.63		
1.4	16QAM	1	5	21.52	21.68	21.54		
1.4	16QAM	3	0	21.41	21.49	21.37		
1.4	16QAM	3	1	21.44	21.54	21.39		
1.4	16QAM	3	3	21.36	21.49	21.34		
1.4	16QAM	6	0	20.42	20.54	20.46	21	2
1.4	64QAM	1	0	20.54	20.68	20.57	21	2
1.4	64QAM	1	3	20.60	20.74	20.60		
1.4	64QAM	1	5	20.49	20.66	20.50		
1.4	64QAM	3	0	20.51	20.65	20.53		
1.4	64QAM	3	1	20.56	20.72	20.57		
1.4	64QAM	3	3	20.52	20.64	20.52		
1.4	64QAM	6	0	19.39	19.46	19.40	20	3



<LTE Band 5>

BW [MHz]	Modulation	RB Size	RB Offset	Power Low Ch. / Freq.	Power Middle Ch. / Freq.	Power High Ch. / Freq.	Tune-up limit (dBm)	MPR (dB)
Channel				20450	20525	20600		
Frequency (MHz)				829	836.5	844		
10	QPSK	1	0	23.81	23.86	23.67	24.5	0
10	QPSK	1	25	23.74	23.84	23.64		
10	QPSK	1	49	23.80	23.81	23.60		
10	QPSK	25	0	22.88	22.90	22.73	23.5	1
10	QPSK	25	12	22.81	22.88	22.71		
10	QPSK	25	25	22.87	22.86	22.70		
10	QPSK	50	0	22.87	22.98	22.71	23.5	1
10	16QAM	1	0	23.20	23.20	22.98		
10	16QAM	1	25	23.19	23.16	22.87		
10	16QAM	1	49	23.24	23.09	22.72	22.5	2
10	16QAM	25	0	22.02	22.00	21.79		
10	16QAM	25	12	22.13	21.99	21.75		
10	16QAM	25	25	22.06	21.97	21.71	22.5	2
10	16QAM	50	0	22.09	21.97	21.76		
10	64QAM	1	0	22.16	22.16	21.93		
10	64QAM	1	25	22.15	22.16	21.84	22.5	2
10	64QAM	1	49	22.21	22.05	21.75		
10	64QAM	25	0	21.02	21.03	20.77		
10	64QAM	25	12	21.12	21.02	20.80	21.5	3
10	64QAM	25	25	21.07	20.95	20.73		
10	64QAM	50	0	21.10	20.99	20.76		
Channel				20425	20525	20625		
Frequency (MHz)				826.5	836.5	846.5		
5	QPSK	1	0	23.83	23.82	23.61	24.5	0
5	QPSK	1	12	23.81	23.80	23.60		
5	QPSK	1	24	23.79	23.76	23.57		
5	QPSK	12	0	22.90	22.86	22.66	23.5	1
5	QPSK	12	7	22.91	22.88	22.64		
5	QPSK	12	13	22.87	22.83	22.59		
5	QPSK	25	0	22.88	22.86	22.63	23.5	1
5	16QAM	1	0	23.15	23.15	22.82		
5	16QAM	1	12	23.19	23.14	22.77		
5	16QAM	1	24	23.13	23.09	22.69	22.5	2
5	16QAM	12	0	22.02	21.98	21.67		
5	16QAM	12	7	22.03	21.99	21.71		
5	16QAM	12	13	22.00	21.94	21.64	22.5	2
5	16QAM	25	0	21.97	21.95	21.67		
5	64QAM	1	0	22.14	22.11	21.79		
5	64QAM	1	12	22.13	22.10	21.74	22.5	2
5	64QAM	1	24	22.10	22.05	21.68		
5	64QAM	12	0	21.09	21.03	20.77		
5	64QAM	12	7	21.11	21.04	20.75	21.5	3
5	64QAM	12	13	21.06	20.98	20.73		
5	64QAM	25	0	21.00	20.96	20.67		



Channel				20415	20525	20635	Tune-up limit (dBm)	MPR (dB)
Frequency (MHz)				825.5	836.5	847.5		
3	QPSK	1	0	23.84	23.82	23.60	24.5	0
3	QPSK	1	8	23.82	23.78	23.55		
3	QPSK	1	14	23.81	23.78	23.55		
3	QPSK	8	0	22.86	22.84	22.59	23.5	1
3	QPSK	8	4	22.90	22.88	22.65		
3	QPSK	8	7	22.88	22.81	22.58		
3	QPSK	15	0	22.89	22.85	22.65	23.5	1
3	16QAM	1	0	23.14	23.13	22.76		
3	16QAM	1	8	23.18	23.13	22.73		
3	16QAM	1	14	23.14	23.08	22.72	22.5	2
3	16QAM	8	0	22.01	21.98	21.66		
3	16QAM	8	4	22.06	22.02	21.70		
3	16QAM	8	7	22.04	21.97	21.64	22.5	2
3	16QAM	15	0	22.03	21.95	21.67		
3	64QAM	1	0	22.13	22.08	21.72		
3	64QAM	1	8	22.14	22.09	21.69	22.5	2
3	64QAM	1	14	22.14	21.97	21.67		
3	64QAM	8	0	21.06	21.00	20.71		
3	64QAM	8	4	21.06	21.04	20.71	21.5	3
3	64QAM	8	7	21.04	21.00	20.65		
3	64QAM	15	0	21.02	20.96	20.68		
Channel				20407	20525	20643	Tune-up limit (dBm)	MPR (dB)
Frequency (MHz)				824.7	836.5	848.3		
1.4	QPSK	1	0	23.75	23.71	23.50	24.5	0
1.4	QPSK	1	3	23.85	23.78	23.57		
1.4	QPSK	1	5	23.76	23.70	23.51		
1.4	QPSK	3	0	23.80	23.79	23.51		
1.4	QPSK	3	1	23.76	23.83	23.59		
1.4	QPSK	3	3	23.82	23.77	23.52		
1.4	QPSK	6	0	22.84	22.78	22.54	23.5	1
1.4	16QAM	1	0	23.06	23.05	22.64	23.5	1
1.4	16QAM	1	3	23.15	23.11	22.68		
1.4	16QAM	1	5	23.08	23.03	22.61		
1.4	16QAM	3	0	22.87	22.84	22.48		
1.4	16QAM	3	1	22.91	22.87	22.54		
1.4	16QAM	3	3	22.88	22.82	22.46		
1.4	16QAM	6	0	21.99	21.92	21.62	22.5	2
1.4	64QAM	1	0	22.06	22.01	21.65	22.5	2
1.4	64QAM	1	3	22.10	22.06	21.68		
1.4	64QAM	1	5	22.03	21.99	21.61		
1.4	64QAM	3	0	22.06	22.00	21.66		
1.4	64QAM	3	1	22.09	22.06	21.67		
1.4	64QAM	3	3	22.03	22.00	21.62		
1.4	64QAM	6	0	20.94	20.87	20.59	21.5	3



<LTE Band 7>

BW [MHz]	Modulation	RB Size	RB Offset	Power Low Ch. / Freq.	Power Middle Ch. / Freq.	Power High Ch. / Freq.	Tune-up limit (dBm)	MPR (dB)
Channel				20850	21100	21350		
Frequency (MHz)				2510	2535	2560		
20	QPSK	1	0	24.10	24.33	24.23	24.5	0
20	QPSK	1	49	24.04	24.19	24.21		
20	QPSK	1	99	24.05	24.12	24.14		
20	QPSK	50	0	23.16	23.32	23.31	23.5	1
20	QPSK	50	24	23.10	23.24	23.29		
20	QPSK	50	50	23.14	23.29	23.24		
20	QPSK	100	0	23.21	23.28	23.27		
20	16QAM	1	0	23.21	23.33	23.38	23.5	1
20	16QAM	1	49	23.30	23.41	23.42		
20	16QAM	1	99	23.47	23.48	23.49		
20	16QAM	50	0	22.21	22.32	22.36	22.5	2
20	16QAM	50	24	22.27	22.38	22.41		
20	16QAM	50	50	22.40	22.41	22.44		
20	16QAM	100	0	22.35	22.35	22.42		
20	64QAM	1	0	22.14	22.31	22.33	22.5	2
20	64QAM	1	49	22.26	22.33	22.38		
20	64QAM	1	99	22.43	22.48	22.43		
20	64QAM	50	0	21.22	21.33	21.36	21.5	3
20	64QAM	50	24	21.27	21.39	21.43		
20	64QAM	50	50	21.41	21.43	21.45		
20	64QAM	100	0	21.38	21.41	21.43		
Channel				20825	21100	21375		
Frequency (MHz)				2507.5	2535	2562.5		
15	QPSK	1	0	24.26	24.20	24.24	24.5	0
15	QPSK	1	37	24.23	24.22	24.24		
15	QPSK	1	74	24.18	24.31	24.20		
15	QPSK	36	0	23.32	23.32	23.32	23.5	1
15	QPSK	36	20	23.36	23.34	23.36		
15	QPSK	36	39	23.37	23.35	23.37		
15	QPSK	75	0	23.28	23.31	23.35		
15	16QAM	1	0	23.43	23.38	23.43	23.5	1
15	16QAM	1	37	23.40	23.43	23.41		
15	16QAM	1	74	23.47	23.48	23.45		
15	16QAM	36	0	22.23	22.19	22.22	22.5	2
15	16QAM	36	20	22.29	22.25	22.25		
15	16QAM	36	39	22.29	22.24	22.26		
15	16QAM	75	0	22.25	22.23	22.23		
15	64QAM	1	0	22.35	22.34	22.34	22.5	2
15	64QAM	1	37	22.36	22.33	22.34		
15	64QAM	1	74	22.47	22.48	22.43		
15	64QAM	36	0	21.24	21.20	21.24	21.5	3
15	64QAM	36	20	21.32	21.26	21.27		
15	64QAM	36	39	21.31	21.28	21.28		
15	64QAM	75	0	21.23	21.20	21.23		



FCC SAR TEST REPORT

Report No. : FA882920-01

Channel				20800	21100	21400	Tune-up limit (dBm)	MPR (dB)
Frequency (MHz)				2505	2535	2565		
10	QPSK	1	0	24.24	24.21	24.21	24.5	0
10	QPSK	1	25	24.26	24.27	24.27		
10	QPSK	1	49	24.32	24.14	24.32		
10	QPSK	25	0	23.28	23.27	23.27	23.5	1
10	QPSK	25	12	23.30	23.29	23.30		
10	QPSK	25	25	23.32	23.32	23.33		
10	QPSK	50	0	23.31	23.30	23.31	23.5	1
10	16QAM	1	0	23.45	23.40	23.43		
10	16QAM	1	25	23.46	23.47	23.45		
10	16QAM	1	49	23.49	23.48	23.49	22.5	2
10	16QAM	25	0	22.39	22.38	22.39		
10	16QAM	25	12	22.45	22.43	22.41		
10	16QAM	25	25	22.44	22.43	22.44	22.5	2
10	16QAM	50	0	22.42	22.40	22.40		
10	64QAM	1	0	22.33	22.33	22.33		
10	64QAM	1	25	22.38	22.38	22.37	22.5	2
10	64QAM	1	49	22.46	22.44	22.42		
10	64QAM	25	0	21.41	21.39	21.42		
10	64QAM	25	12	21.46	21.42	21.45	21.5	3
10	64QAM	25	25	21.47	21.45	21.44		
10	64QAM	50	0	21.43	21.41	21.43		
Channel				20775	21100	21425	Tune-up limit (dBm)	MPR (dB)
Frequency (MHz)				2502.5	2535	2567.5		
5	QPSK	1	0	24.25	24.23	24.25	24.5	0
5	QPSK	1	12	24.25	24.20	24.25		
5	QPSK	1	24	24.28	24.28	24.29		
5	QPSK	12	0	23.28	23.27	23.28	23.5	1
5	QPSK	12	7	23.35	23.33	23.34		
5	QPSK	12	13	23.35	23.32	23.30		
5	QPSK	25	0	23.30	23.27	23.28	23.5	1
5	16QAM	1	0	23.43	23.43	23.40		
5	16QAM	1	12	23.46	23.45	23.41		
5	16QAM	1	24	23.47	23.47	23.44	22.5	2
5	16QAM	12	0	22.43	22.39	22.40		
5	16QAM	12	7	22.47	22.43	22.41		
5	16QAM	12	13	22.49	22.45	22.41	22.5	2
5	16QAM	25	0	22.41	22.38	22.38		
5	64QAM	1	0	22.45	22.43	22.42		
5	64QAM	1	12	22.47	22.47	22.43	22.5	2
5	64QAM	1	24	22.48	22.46	22.45		
5	64QAM	12	0	21.45	21.43	21.44		
5	64QAM	12	7	21.43	21.48	21.47	21.5	3
5	64QAM	12	13	21.50	21.47	21.48		
5	64QAM	25	0	21.41	21.40	21.38		



<Reduced Power Mode>

<LTE Band 2>

BW [MHz]	Modulation	RB Size	RB Offset	Power Low Ch. / Freq.	Power Middle Ch. / Freq.	Power High Ch. / Freq.	Tune-up limit (dBm)	MPR (dB)
Channel				18700	18900	19100		
Frequency (MHz)				1860	1880	1900		
20	QPSK	1	0	19.90	19.91	19.78	21	0
20	QPSK	1	49	19.84	19.87	19.74		
20	QPSK	1	99	19.85	19.87	19.74		
20	QPSK	50	0	19.90	19.91	19.78	21	0
20	QPSK	50	24	19.87	19.92	19.77		
20	QPSK	50	50	19.91	19.86	19.71		
20	QPSK	100	0	19.95	19.87	19.76		
20	16QAM	1	0	20.29	20.36	20.24	21	0
20	16QAM	1	49	20.26	20.28	20.24		
20	16QAM	1	99	20.28	20.33	20.16		
20	16QAM	50	0	20.03	20.05	19.97	21	0
20	16QAM	50	24	20.03	20.06	19.93		
20	16QAM	50	50	20.07	19.98	19.83		
20	16QAM	100	0	20.12	20.02	19.91		
20	64QAM	1	0	20.22	20.29	20.11	21	0
20	64QAM	1	49	20.15	20.17	20.09		
20	64QAM	1	99	20.20	20.26	20.04		
20	64QAM	50	0	19.53	19.56	19.48	21	0
20	64QAM	50	24	19.54	19.57	19.45		
20	64QAM	50	50	19.58	19.49	19.43		
20	64QAM	100	0	19.61	19.55	19.48		
Channel				18675	18900	19125	Tune-up limit (dBm)	MPR (dB)
Frequency (MHz)				1857.5	1880	1902.5		
15	QPSK	1	0	19.79	19.90	19.81	21	0
15	QPSK	1	37	19.76	19.87	19.84		
15	QPSK	1	74	19.68	19.80	19.77		
15	QPSK	36	0	19.82	19.95	19.80	21	0
15	QPSK	36	20	19.85	19.95	19.82		
15	QPSK	36	39	19.78	19.88	19.84		
15	QPSK	75	0	19.83	19.92	19.81		
15	16QAM	1	0	20.14	20.29	20.27	21	0
15	16QAM	1	37	20.12	20.28	20.32		
15	16QAM	1	74	20.08	20.19	20.14		
15	16QAM	36	0	19.93	20.08	19.97	21	0
15	16QAM	36	20	19.96	20.11	20.00		
15	16QAM	36	39	19.92	20.05	20.02		
15	16QAM	75	0	19.91	20.05	19.96		
15	64QAM	1	0	20.14	20.33	20.16	21	0
15	64QAM	1	37	20.13	20.28	20.27		
15	64QAM	1	74	20.10	20.18	20.07		
15	64QAM	36	0	20.03	20.19	20.02	21	0
15	64QAM	36	20	20.04	20.17	20.04		
15	64QAM	36	39	19.98	20.10	20.08		
15	64QAM	75	0	19.96	20.15	19.96		



Channel				18650	18900	19150	Tune-up limit (dBm)	MPR (dB)
Frequency (MHz)				1855	1880	1905		
10	QPSK	1	0	19.81	19.93	19.76	21	0
10	QPSK	1	25	19.72	19.78	19.85		
10	QPSK	1	49	19.69	19.79	19.79		
10	QPSK	25	0	19.76	19.81	19.74	21	0
10	QPSK	25	12	19.75	19.82	19.88		
10	QPSK	25	25	19.68	19.79	19.83		
10	QPSK	50	0	19.71	19.82	19.74	21	0
10	16QAM	1	0	20.21	20.35	20.24		
10	16QAM	1	25	20.09	20.18	20.31		
10	16QAM	1	49	20.09	20.22	20.16	21	0
10	16QAM	25	0	19.85	19.96	19.92		
10	16QAM	25	12	19.82	19.95	20.01		
10	16QAM	25	25	19.78	19.91	19.96	21	0
10	16QAM	50	0	19.80	19.95	19.90		
10	64QAM	1	0	20.11	20.26	20.12		
10	64QAM	1	25	20.02	20.15	20.16	21	0
10	64QAM	1	49	20.04	20.15	19.95		
10	64QAM	25	0	19.90	20.03	19.94		
10	64QAM	25	12	19.90	20.00	20.04	21	0
10	64QAM	25	25	19.83	19.96	19.88		
10	64QAM	50	0	19.88	19.99	19.82		
Channel				18625	18900	19175	Tune-up limit (dBm)	MPR (dB)
Frequency (MHz)				1852.5	1880	1907.5		
5	QPSK	1	0	19.71	19.79	19.76	21	0
5	QPSK	1	12	19.75	19.83	19.74		
5	QPSK	1	24	19.66	19.76	19.68		
5	QPSK	12	0	19.77	19.85	19.89	21	0
5	QPSK	12	7	19.76	19.83	19.89		
5	QPSK	12	13	19.72	19.79	19.82		
5	QPSK	25	0	19.73	19.79	19.82	21	0
5	16QAM	1	0	20.06	20.18	20.28		
5	16QAM	1	12	20.04	20.21	20.24		
5	16QAM	1	24	20.03	20.12	20.11	21	0
5	16QAM	12	0	19.84	19.97	19.91		
5	16QAM	12	7	19.85	19.96	20.02		
5	16QAM	12	13	19.79	19.91	19.93	21	0
5	16QAM	25	0	19.82	19.92	19.86		
5	64QAM	1	0	20.03	20.09	20.28		
5	64QAM	1	12	19.96	20.17	20.14	21	0
5	64QAM	1	24	20.03	20.12	20.11		
5	64QAM	12	0	19.78	19.91	19.86		
5	64QAM	12	7	19.84	19.86	20.01	21	0
5	64QAM	12	13	19.74	19.87	19.91		
5	64QAM	25	0	19.73	19.84	19.85		



Channel				18615	18900	19185	Tune-up limit (dBm)	MPR (dB)
Frequency (MHz)				1851.5	1880	1908.5		
3	QPSK	1	0	19.76	19.86	19.80	21	0
3	QPSK	1	8	19.80	19.88	19.79		
3	QPSK	1	14	19.76	19.83	19.76		
3	QPSK	8	0	19.84	19.89	19.83	21	0
3	QPSK	8	4	19.87	19.95	19.86		
3	QPSK	8	7	19.82	19.89	19.86		
3	QPSK	15	0	19.79	19.87	19.85	21	0
3	16QAM	1	0	20.08	20.25	20.18		
3	16QAM	1	8	20.15	20.31	20.20		
3	16QAM	1	14	20.10	20.22	20.15	21	0
3	16QAM	8	0	19.95	20.08	20.03		
3	16QAM	8	4	20.00	20.13	20.03		
3	16QAM	8	7	19.95	20.06	19.99	21	0
3	16QAM	15	0	19.92	20.04	19.98		
3	64QAM	1	0	20.10	20.22	20.16		
3	64QAM	1	8	20.13	20.22	20.18	21	0
3	64QAM	1	14	20.05	20.16	20.12		
3	64QAM	8	0	19.99	20.12	20.06		
3	64QAM	8	4	20.05	20.14	20.10	21	0
3	64QAM	8	7	20.00	20.12	20.04		
3	64QAM	15	0	19.94	20.03	20.00		
Channel				18607	18900	19193	Tune-up limit (dBm)	MPR (dB)
Frequency (MHz)				1850.7	1880	1909.3		
1.4	QPSK	1	0	19.75	19.83	19.73	21	0
1.4	QPSK	1	3	19.78	19.86	19.80		
1.4	QPSK	1	5	19.71	19.82	19.73		
1.4	QPSK	3	0	19.74	19.84	19.76		
1.4	QPSK	3	1	19.83	19.89	19.81		
1.4	QPSK	3	3	19.81	19.83	19.79		
1.4	QPSK	6	0	19.77	19.82	19.77	21	0
1.4	16QAM	1	0	20.11	20.21	20.13	21	0
1.4	16QAM	1	3	20.13	20.25	20.23		
1.4	16QAM	1	5	20.07	20.20	20.13		
1.4	16QAM	3	0	19.88	20.01	19.93		
1.4	16QAM	3	1	19.93	20.05	19.96		
1.4	16QAM	3	3	19.89	19.98	19.92		
1.4	16QAM	6	0	19.92	20.04	19.97	21	0
1.4	64QAM	1	0	20.09	20.18	20.09	21	0
1.4	64QAM	1	3	20.15	20.22	20.14		
1.4	64QAM	1	5	20.08	20.15	20.06		
1.4	64QAM	3	0	20.06	20.14	20.07		
1.4	64QAM	3	1	20.12	20.20	20.12		
1.4	64QAM	3	3	20.02	20.16	20.08		
1.4	64QAM	6	0	19.91	19.99	19.92	21	0

<TDD LTE SAR Measurement>

TDD LTE configuration setup for SAR measurement

SAR was tested with a fixed periodic duty factor according to the highest transmission duty factor implemented for the device and supported by 3GPP.

- a. 3GPP TS 36.211 section 4.2 for Type 2 Frame Structure and Table 4.2-2 for uplink-downlink configurations
- b. "special subframe S" contains both uplink and downlink transmissions, it has been taken into consideration to determine the transmission duty factor according to the worst case uplink and downlink cyclic prefix requirements for UpPTS
- c. Establishing connections with base station simulators ensure a consistent means for testing SAR and recommended for evaluating SAR. The Anritsu MT8820C (firmware: #22.52#004) was used for LTE output power measurements and SAR testing.

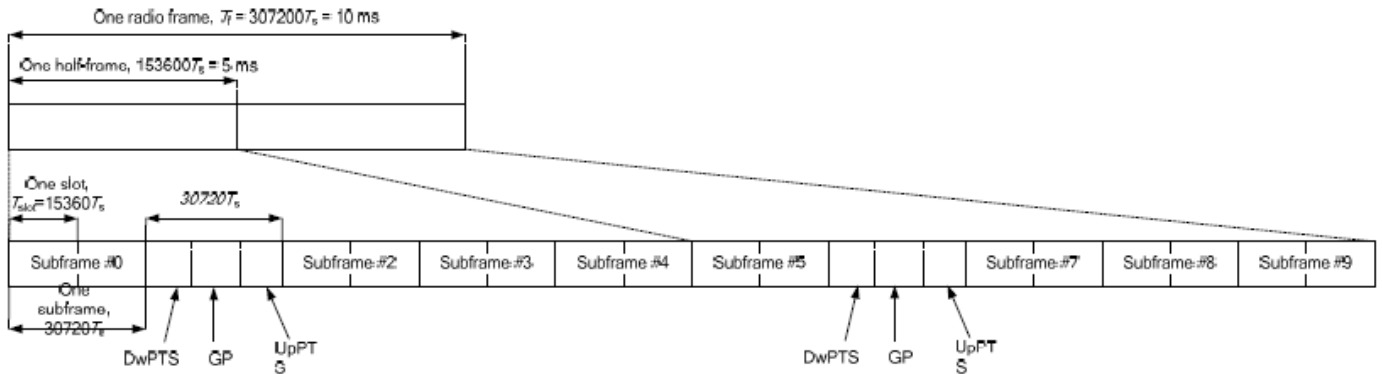


Figure 4.2-1: Frame structure type 2 (for 5 ms switch-point periodicity).

Table 4.2-2: Uplink-downlink configurations.

Uplink-downlink configuration	Downlink-to-Uplink Switch-point periodicity	Subframe number									
		0	1	2	3	4	5	6	7	8	9
0	5 ms	D	S	U	U	U	D	S	U	U	U
1	5 ms	D	S	U	U	D	D	S	U	U	D
2	5 ms	D	S	U	D	D	D	S	U	D	D
3	10 ms	D	S	U	U	U	D	D	D	D	D
4	10 ms	D	S	U	U	D	D	D	D	D	D
5	10 ms	D	S	U	D	D	D	D	D	D	D
6	5 ms	D	S	U	U	U	D	S	U	U	D

Table 4.2-1: Configuration of special subframe (lengths of DwPTS/GP/UpPTS).

Special subframe configuration	Normal cyclic prefix in downlink			Extended cyclic prefix in downlink		
	DwPTS	UpPTS		DwPTS	UpPTS	
		Normal cyclic prefix in uplink	Extended cyclic prefix in uplink		Normal cyclic prefix in uplink	Extended cyclic prefix in uplink
0	6592 · Ts	2192 · Ts	2560 · Ts	7680 · Ts	2192 · Ts	2560 · Ts
1	19760 · Ts			20480 · Ts		
2	21952 · Ts			23040 · Ts		
3	24144 · Ts			25600 · Ts		
4	26336 · Ts			7680 · Ts	4384 · Ts	5120 · Ts
5	6592 · Ts	4384 · Ts	5120 · Ts	20480 · Ts		
6	19760 · Ts			23040 · Ts		
7	21952 · Ts			12800 · Ts		
8	24144 · Ts			-	-	-
9	13168 · Ts			-	-	-

Special subframe (30720·T_s): Normal cyclic prefix in downlink (UpPTS)			
	Special subframe configuration	Normal cyclic prefix in uplink	Extended cyclic prefix in uplink
Uplink duty factor in one special subframe	0~4	7.13%	8.33%
	5~9	14.3%	16.7%

Special subframe(30720·T_s): Extended cyclic prefix in downlink (UpPTS)			
	Special subframe configuration	Normal cyclic prefix in uplink	Extended cyclic prefix in uplink
Uplink duty factor in one special subframe	0~3	7.13%	8.33%
	4~7	14.3%	16.7%

The highest duty factor is resulted from:

- i. Uplink-downlink configuration: 0. In a half-frame consisted of 5 subframes, uplink operation is in 3 uplink subframes and 1 special subframe.
- ii. special subframe configuration: 5-9 for normal cyclic prefix in downlink, 4-7 for extended cyclic prefix in downlink
- iii. for special subframe with extended cyclic prefix in uplink, the total uplink duty factor in one half-frame is: $(3+0.167)/5 = 63.3\%$
- iv. for special subframe with normal cyclic prefix in uplink, the total uplink duty factor in one half-frame is: $(3+0.143)/5 = 62.9\%$
- v. For TDD LTE SAR measurement, the duty cycle 1:1.59 (62.9 %) was used perform testing and considering the theoretical duty cycle of 63.3% for extended cyclic prefix in the uplink, and the theoretical duty cycle of 62.9% for normal cyclic prefix in uplink, a scaling factor of extended cyclic prefix $63.3\%/62.9\% = 1.006$ is applied to scale-up the measured SAR result. The scaled TDD LTE SAR = measured SAR (W/kg)* Tune-up Scaling Factor* scaling factor for extended cyclic prefix.



<Default Power Mode>

<LTE Band 41>

BW [MHz]	Modulation	RB Size	RB Offset	Power Low Ch. / Freq.	Power Middle Low Ch. / Freq.	Power Middle High Ch. / Freq.	Power High Ch. / Freq.	Tune-up limit (dBm)	MPR (dB)
Channel				40340	40600	40870	41140		
Frequency (MHz)				2565	2591	2618	2645		
20	QPSK	1	0	24.26	24.20	24.16	24.16	24.5	0
20	QPSK	1	49	24.15	24.05	24.07	24.08		
20	QPSK	1	99	24.25	24.17	24.09	24.09		
20	QPSK	50	0	23.25	23.23	23.21	23.18	23.5	1
20	QPSK	50	24	23.21	23.18	23.17	23.17		
20	QPSK	50	50	23.21	23.15	23.12	23.12		
20	QPSK	100	0	23.18	23.17	23.09	23.07	23.5	1
20	16QAM	1	0	23.36	23.35	23.32	23.31		
20	16QAM	1	49	23.27	23.28	23.25	23.29		
20	16QAM	1	99	23.40	23.36	23.38	23.30	22.5	2
20	16QAM	50	0	22.25	22.18	22.23	22.26		
20	16QAM	50	24	22.25	22.26	22.22	22.26		
20	16QAM	50	50	22.21	22.26	22.21	22.30	22.5	2
20	16QAM	100	0	22.30	22.29	22.28	22.28		
20	64QAM	1	0	22.13	22.08	22.07	22.14		
20	64QAM	1	49	22.02	21.95	22.00	22.06	22.5	2
20	64QAM	1	99	22.09	22.18	22.12	22.05		
20	64QAM	50	0	21.27	21.29	21.24	21.32		
20	64QAM	50	24	21.29	21.28	21.25	21.35	21.5	3
20	64QAM	50	50	21.24	21.25	21.27	21.30		
20	64QAM	100	0	21.27	21.29	21.25	21.31		
Channel				40315	40595	40885	41165	Tune-up limit (dBm)	MPR (dB)
Frequency (MHz)				2562.5	2590.5	2619.5	2647.5		
15	QPSK	1	0	24.12	24.16	24.10	24.14	24.5	0
15	QPSK	1	37	24.07	24.11	24.04	24.11		
15	QPSK	1	74	24.14	24.17	24.12	24.17		
15	QPSK	36	0	23.09	23.17	23.14	23.16	23.5	1
15	QPSK	36	20	23.14	23.14	23.09	23.17		
15	QPSK	36	39	23.17	23.13	23.14	23.12		
15	QPSK	75	0	23.17	23.16	23.10	23.12	23.5	1
15	16QAM	1	0	23.34	23.31	23.32	23.39		
15	16QAM	1	37	23.22	23.27	23.22	23.30		
15	16QAM	1	74	23.24	23.31	23.28	23.29	22.5	2
15	16QAM	36	0	22.24	22.28	22.24	22.31		
15	16QAM	36	20	22.25	22.28	22.27	22.26		
15	16QAM	36	39	22.24	22.27	22.24	22.26	22.5	2
15	16QAM	75	0	22.23	22.28	22.26	22.30		
15	64QAM	1	0	22.05	22.08	22.01	22.13		
15	64QAM	1	37	21.93	22.00	21.98	22.03	22.5	2
15	64QAM	1	74	22.01	22.06	22.05	22.13		
15	64QAM	36	0	21.26	21.29	21.24	21.31		
15	64QAM	36	20	21.25	21.30	21.24	21.30	21.5	3
15	64QAM	36	39	21.29	21.25	21.24	21.30		
15	64QAM	75	0	21.25	21.25	21.27	21.26		



FCC SAR TEST REPORT

Report No. : FA882920-01

Channel				40290	40590	40890	41190	Tune-up limit (dBm)	MPR (dB)
Frequency (MHz)				2560	2590	2620	2650		
10	QPSK	1	0	24.09	24.11	24.06	24.04	24.5	0
10	QPSK	1	25	24.10	24.14	24.05	23.93		
10	QPSK	1	49	24.17	24.14	24.08	24.02		
10	QPSK	25	0	23.11	23.07	23.08	23.03	23.5	1
10	QPSK	25	12	23.13	23.14	23.07	23.07		
10	QPSK	25	25	23.14	23.11	23.06	23.02		
10	QPSK	50	0	23.15	23.10	23.07	23.05	23.5	1
10	16QAM	1	0	23.28	23.21	23.17	23.28		
10	16QAM	1	25	23.26	23.26	23.18	23.24		
10	16QAM	1	49	23.26	23.28	23.21	23.16	22.5	2
10	16QAM	25	0	22.21	22.22	22.22	22.26		
10	16QAM	25	12	22.26	22.26	22.24	22.29		
10	16QAM	25	25	22.25	22.26	22.23	22.23	22.5	2
10	16QAM	50	0	22.25	22.24	22.22	22.22		
10	64QAM	1	0	22.01	22.04	21.99	22.04		
10	64QAM	1	25	22.00	22.04	21.98	22.01	22.5	2
10	64QAM	1	49	22.00	22.02	21.97	21.98		
10	64QAM	25	0	21.26	21.24	21.28	21.28		
10	64QAM	25	12	21.30	21.29	21.26	21.31	21.5	3
10	64QAM	25	25	21.28	21.27	21.23	21.35		
10	64QAM	50	0	21.21	21.21	21.20	21.23		
Channel				40265	40585	40905	41215	Tune-up limit (dBm)	MPR (dB)
Frequency (MHz)				2557.5	2589.5	2621.5	2652.5		
5	QPSK	1	0	24.07	24.07	23.99	23.96	24.5	0
5	QPSK	1	12	24.08	24.07	24.02	24.03		
5	QPSK	1	24	24.07	24.06	23.98	23.92		
5	QPSK	12	0	23.11	23.09	23.03	23.05	23.5	1
5	QPSK	12	7	23.08	23.11	23.08	23.03		
5	QPSK	12	13	23.10	23.16	23.08	23.01		
5	QPSK	25	0	23.09	23.09	23.08	23.03	23.5	1
5	16QAM	1	0	23.29	23.26	23.22	23.18		
5	16QAM	1	12	23.29	23.26	23.21	23.17		
5	16QAM	1	24	23.24	23.27	23.23	23.18	22.5	2
5	16QAM	12	0	22.11	22.18	22.13	22.19		
5	16QAM	12	7	22.21	22.22	22.16	22.20		
5	16QAM	12	13	22.20	22.21	22.18	22.24	22.5	2
5	16QAM	25	0	22.21	22.23	22.21	22.19		
5	64QAM	1	0	22.02	22.01	21.94	22.02		
5	64QAM	1	12	22.01	22.03	21.97	22.03	22.5	2
5	64QAM	1	24	21.99	22.03	22.00	21.90		
5	64QAM	12	0	21.22	21.25	21.21	21.21		
5	64QAM	12	7	21.24	21.29	21.25	21.26	21.5	3
5	64QAM	12	13	21.27	21.26	21.27	21.26		
5	64QAM	25	0	21.28	21.27	21.25	21.27		

<LTE Carrier Aggregation combinations>

General Note:

1. This device supports Carrier Aggregation on downlink only for inter and intra band, Uplink CA is not supported. For the device supports combination bands and configurations are according to 3GPP.
2. In applying the existing power measurement procedure of KDB 941225 D05A for DL CA SAR test exclusion, only the subset with the largest number of combinations of the frequency band and CCs in each row need consideration, and that configurations require power measurement should be highlighted in the below table.

<Intra-Band combinations>

2 bands / 2 CC
CA_5A-7A

<Inter-Band combinations>

Intra-Band Contiguous	Intra-Band Non-Contiguous
CA_7C	CA_7A-7A
CA_7B	
CA_41C	

<Power verification when LTE Carrier Aggregation Active>

General Note:

- i. According to KDB941225 D05A v01r02, Uplink maximum output power measurement with downlink carrier aggregation active should be measured, using the highest output channel measured without downlink carrier aggregation, to confirm that uplink maximum output power with downlink carrier aggregation active remains within the specified tune-up tolerance limits and not more than ¼ dB higher than the maximum output measured without downlink carrier aggregation active.
- ii. Uplink maximum output power with downlink carrier aggregation active does not show more than ¼ dB higher than the maximum output power without downlink carrier aggregation active, therefore SAR evaluation with downlink carrier aggregation active can be excluded.
- iii. The device supports downlink two carrier aggregation. For power measurement were control and acknowledge data is sent on uplink channels that operate identical to specifications when downlink carrier aggregation is inactive.
- iv. Selected highest measured power when downlink carrier aggregation is inactive for conducted power comparison with downlink carrier aggregation is active, to confirm that when downlink carrier aggregation is active uplink maximum output power remains within the specified tune-up tolerance limits and not more than ¼ dB higher than the maximum output power measured when downlink carrier aggregation inactive.
- v. For non-contiguous intra-band CA, the SCC selected to provide maximum separation from the PCC and must remain fully within the downlink transmission band.
- vi. For Intra-band, contiguous CA, the downlink channels selected to perform the uplink power measurement must satisfy 3GPP channel spacing (5.4.1A of 3GPP TS 36.521 or equivalent) and channel bandwidth (5.4.2A) requirements.

$$\text{Nominal channel spacing} = \left\lceil \frac{BW_{\text{Channel}(1)} + BW_{\text{Channel}(2)} - 0.1|BW_{\text{Channel}(1)} - BW_{\text{Channel}(2)}|}{0.6} \right\rceil 0.3 \text{ [MHz]}$$

<Two Carrier power verification>

Configure	PCC								SCC				Power	
	LTE Band	BW (MHz)	UL Freq. (MHz)	UL Channel	Mod.	UL# RB	UL RB Offset	LTE Band	BW (MHz)	DL Freq. (MHz)	DL Channel	With CA Tx.Power (dBm)	W/O CA Tx.Power (dBm)	
Inter-Band	5	10	836.5	20525	QPSK	1	0	7	20	2655	3100	23.62	23.68	
Intra-Band	Non-Contiguous	7	20	2535	21100	QPSK	1	0	7	5	2687.5	3425	23.98	24.00
	Contiguous	7	15	2535	21100	QPSK	1	74	7	5	2544.30	3193	23.99	24.05
		7	20	2535	21100	QPSK	1	0	7	20	2554.80	3298	23.97	24.01
		41	20	2565	40340	QPSK	1	0	41	20	2584.80	40538	24.18	24.22



<WLAN Conducted Power>

General Note:

1. Per KDB 248227 D01v02r02, SAR test reduction is determined according to 802.11 transmission mode configurations and certain exposure conditions with multiple test positions. In the 2.4 GHz band, separate SAR procedures are applied to DSSS and OFDM configurations to simplify DSSS test requirements. For OFDM, in both 2.4 and 5 GHz bands, an initial test configuration must be determined for each standalone and aggregated frequency band, according to the transmission mode configuration with the highest maximum output power specified for production units to perform SAR measurements. If the same highest maximum output power applies to different combinations of channel bandwidths, modulations and data rates, additional procedures are applied to determine which test configurations require SAR measurement. When applicable, an initial test position may be applied to reduce the number of SAR measurements required for next to the ear, UMPC mini-tablet or hotspot mode configurations with multiple test positions.
2. For 2.4 GHz 802.11b DSSS, either the initial test position procedure for multiple exposure test positions or the DSSS procedure for fixed exposure position is applied; these are mutually exclusive. For 2.4 GHz and 5 GHz OFDM configurations, the initial test configuration is applied to measure SAR using either the initial test position procedure for multiple exposure test position configurations or the initial test configuration procedures for fixed exposure test conditions. Based on the reported SAR of the measured configurations and maximum output power of the transmission mode configurations that are not included in the initial test configuration, the subsequent test configuration and initial test position procedures are applied to determine if SAR measurements are required for the remaining OFDM transmission configurations. In general, the number of test channels that require SAR measurement is minimized based on maximum output power measured for the test sample(s).
3. For OFDM transmission configurations in the 2.4 GHz and 5 GHz bands, When the same maximum power is specified for multiple transmission modes in a frequency band, the largest channel bandwidth, lowest order modulation, lowest data rate and lowest order 802.11a/g/n/ac mode is used for SAR measurement, on the highest measured output power channel for each frequency band.
4. DSSS and OFDM configurations are considered separately according to the required SAR procedures. SAR is measured in the initial test position using the 802.11 transmission mode configuration required by the DSSS procedure or initial test configuration and subsequent test configuration(s) according to the OFDM procedures.18 The initial test position procedure is described in the following:
 - a. When the reported SAR of the initial test position is ≤ 0.4 W/kg, further SAR measurement is not required for the other test positions in that exposure configuration and 802.11 transmission mode combinations within the frequency band or aggregated band.
 - b. When the reported SAR of the test position is > 0.4 W/kg, SAR is repeated for the 802.11 transmission mode configuration tested in the initial test position to measure the subsequent next closet/smallest test separation distance and maximum coupling test position on the highest maximum output power channel, until the report SAR is ≤ 0.8 W/kg or all required test position are tested.
 - c. For all positions/configurations, when the reported SAR is > 0.8 W/kg, SAR is measured for these test positions/configurations on the subsequent next highest measured output power channel(s) until the reported SAR is ≤ 1.2 W/kg or all required channels are tested.

<2.4GHz WLAN>

	Mode	Channel	Frequency (MHz)	Average power (dBm)	Tune-Up Limit	Duty Cycle %
2.4GHz WLAN	802.11b 1Mbps	1	2412	16.81	17.00	99.05
		6	2437	16.76	17.00	
		11	2462	16.80	17.00	
		12	2467	14.06	14.50	
		13	2472	13.40	13.50	
	802.11g 6Mbps	1	2412	15.70	16.00	94.50
		6	2437	15.80	16.00	
		11	2462	15.51	16.00	
		12	2467	9.62	10.00	
		13	2472	-2.37	-2.00	
	802.11n-HT20 MCS0	1	2412	15.56	16.00	94.15
		6	2437	15.61	16.00	
		11	2462	15.86	16.00	
		12	2467	9.59	10.00	
		13	2472	-2.98	-2.50	



<5GHz WLAN>

	Mode	Channel	Frequency (MHz)	Average power (dBm)	Tune-Up Limit	Duty Cycle %
5.2GHz WLAN	802.11a 6Mbps	36	5180	15.30	15.50	95.39
		40	5200	15.28	15.50	
		44	5220	15.24	15.50	
		48	5240	15.21	15.50	
	802.11n-HT20 MCS0	36	5180	14.82	15.00	94.61
		40	5200	14.80	15.00	
		44	5220	14.79	15.00	
		48	5240	14.75	15.00	
	802.11n-HT40 MCS0	38	5190	14.38	14.50	90.91
		46	5230	14.36	14.50	
	802.11ac-VHT20 MCS0	36	5180	14.80	15.00	94.53
		40	5200	14.77	15.00	
		44	5220	14.78	15.00	
		48	5240	14.73	15.00	
802.11ac-VHT40 MCS0	38	5190	14.36	14.50	89.47	
	46	5230	14.33	14.50		
802.11ac-VHT80 MCS0	42	5210	13.94	14.00	89.09	

	Mode	Channel	Frequency (MHz)	Average power (dBm)	Tune-Up Limit	Duty Cycle %
5.3GHz WLAN	802.11a 6Mbps	52	5260	15.32	15.50	95.39
		56	5280	15.41	15.50	
		60	5300	15.47	15.50	
		64	5320	15.45	15.50	
	802.11n-HT20 MCS0	52	5260	14.84	15.00	94.61
		56	5280	14.93	15.00	
		60	5300	14.90	15.00	
		64	5320	14.96	15.00	
	802.11n-HT40 MCS0	54	5270	14.40	14.50	90.91
		62	5310	14.49	14.50	
	802.11ac-VHT20 MCS0	52	5260	14.82	15.00	94.53
		56	5280	14.85	15.00	
		60	5300	14.86	15.00	
		64	5320	14.94	15.00	
802.11ac-VHT40 MCS0	54	5270	14.38	14.50	89.47	
	62	5310	14.46	14.50		
802.11ac-VHT80 MCS0	58	5290	13.65	14.00	89.09	



5.5GHz WLAN	Mode	Channel	Frequency (MHz)	Average power (dBm)	Tune-Up Limit	Duty Cycle %
	802.11a 6Mbps	100	5500	15.48	15.50	95.39
		116	5580	15.36	15.50	
		124	5620	15.39	15.50	
		132	5660	15.40	15.50	
		144	5720	15.28	15.50	
	802.11n-HT20 MCS0	100	5500	14.97	15.00	94.61
		116	5580	14.89	15.00	
		124	5620	14.85	15.00	
		132	5660	14.92	15.00	
144		5720	14.72	15.00		
802.11n-HT40 MCS0	102	5510	14.43	14.50	90.91	
	110	5550	14.48	14.50		
	126	5630	14.42	14.50		
	134	5670	14.47	14.50		
	142	5710	14.22	14.50		
802.11ac-VHT20 MCS0	100	5500	14.95	15.00	94.53	
	116	5580	14.83	15.00		
	124	5620	14.83	15.00		
	132	5660	14.90	15.00		
	144	5720	14.69	15.00		
802.11ac-VHT40 MCS0	102	5510	14.40	14.50	89.47	
	110	5550	14.38	14.50		
	126	5630	14.36	14.50		
	134	5670	14.44	14.50		
	142	5710	14.18	14.50		
802.11ac-VHT80 MCS0	106	5530	13.92	14.00	89.09	
	122	5610	13.88	14.00		
	138	5690	13.91	14.00		

5.8GHz WLAN	Mode	Channel	Frequency (MHz)	Average power (dBm)	Tune-Up Limit	Duty Cycle %
	802.11a MCS0	149	5745	15.48	15.50	95.39
		157	5785	15.42	15.50	
		165	5825	15.45	15.50	
	802.11n-HT20 MCS0	149	5745	14.98	15.00	94.61
		157	5785	14.96	15.00	
		165	5825	14.97	15.00	
	802.11n-HT40 MCS0	151	5755	14.47	14.50	90.91
		159	5795	14.41	14.50	
	802.11ac-VHT20 MCS0	149	5745	14.97	15.00	94.53
157		5785	14.94	15.00		
165		5825	14.96	15.00		
802.11ac-VHT40 MCS0	151	5755	14.44	14.50	89.47	
	159	5795	14.39	14.50		
802.11ac-VHT80 MCS0	155	5775	13.70	14.00	89.09	



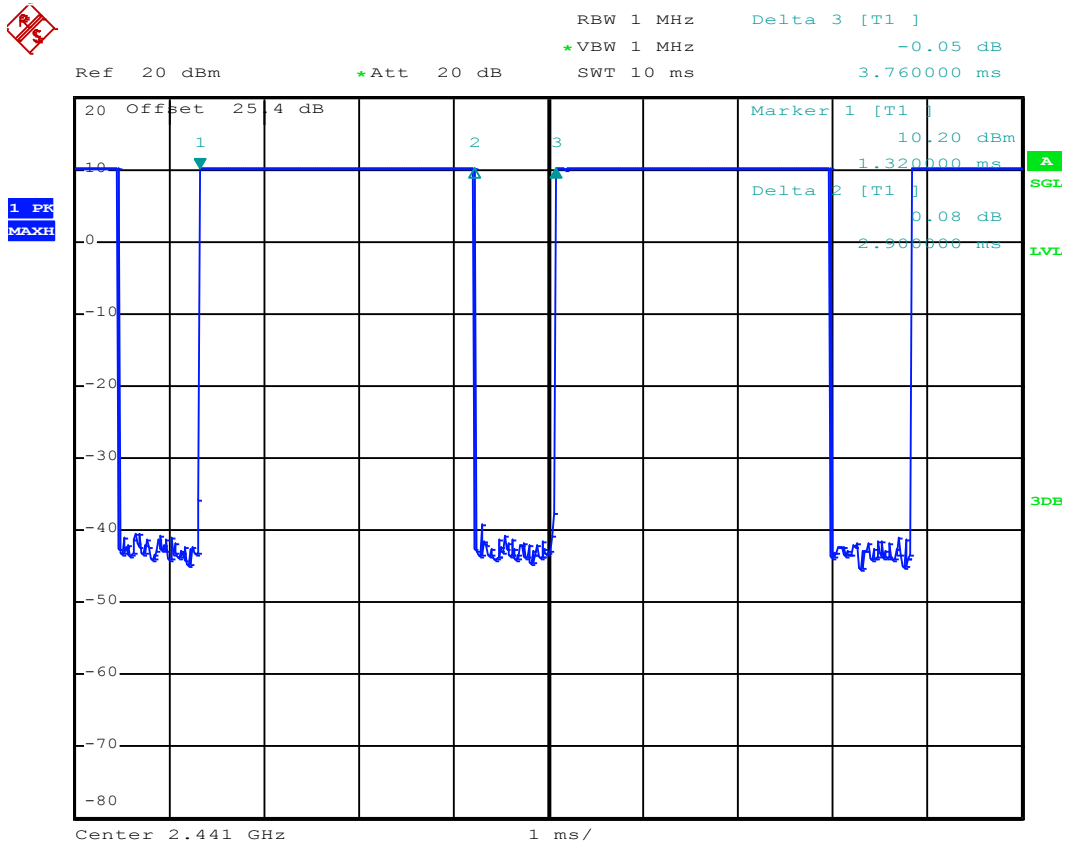
<2.4GHz Bluetooth>

Mode	Channel	Frequency (MHz)	Average power (dBm)		
			1Mbps	2Mbps	3Mbps
BR / EDR	CH 00	2402	11.11	8.62	8.64
	CH 39	2441	10.37	7.44	7.46
	CH 78	2480	11.17	8.70	8.74
Tune-up Limit			11.50	9.50	9.50

Mode	Channel	Frequency (MHz)	Average power (dBm)	
			1Mbps	2Mbps
LE	CH 00	2402	0.53	0.44
	CH 19	2440	-0.06	-0.15
	CH 39	2480	1.72	1.66
Tune-up Limit			2.00	2.00

General Note:

- For 2.4GHz Bluetooth SAR testing was selected 1Mbps due to its highest average power and duty cycle is 77.13% considered in SAR testing, and the duty cycle would be scaled to theoretical 83.3% in reported SAR calculation.



12. RF Exposure Conditions

Distance of the Antenna to the EUT surface/edge						
Antennas	Back	Front	Top Side	Bottom Side	Right Side	Left Side
WWAN	≤ 25mm	≤ 25mm	>25mm	≤ 25mm	≤ 25mm	≤ 25mm
BT&WLAN	≤ 25mm	≤ 25mm	≤ 25mm	>25mm	≤ 25mm	>25mm

Positions for SAR tests; Hotspot mode						
Antennas	Back	Front	Top Side	Bottom Side	Right Side	Left Side
WWAN	Yes	Yes	No	Yes	Yes	Yes
BT&WLAN	Yes	Yes	Yes	No	Yes	No

General Note:

- Referring to KDB 941225 D06 v02r01, when the overall device length and width are ≥ 9cm*5cm, the test distance is 10 mm. SAR must be measured for all sides and surfaces with a transmitting antenna located within 25mm from that surface or edge, The detail antenna location please refers to Appendix D.



13. SAR Test Results

General Note:

1. Per KDB 447498 D01v06, the reported SAR is the measured SAR value adjusted for maximum tune-up tolerance.
 - a. Tune-up scaling Factor = tune-up limit power (mW) / EUT RF power (mW), where tune-up limit is the maximum rated power among all production units.
 - b. For SAR testing of WLAN signal with non-100% duty cycle, the measured SAR is scaled-up by the duty cycle scaling factor which is equal to "1/(duty cycle)"
 - c. For WWAN: Reported SAR(W/kg)= Measured SAR(W/kg)*Tune-up Scaling Factor
 - d. For WLAN/Bluetooth: Reported SAR(W/kg)= Measured SAR(W/kg)* Duty Cycle scaling factor * Tune-up scaling factor
 - e. For TDD LTE SAR measurement, the duty cycle 1:1.59 (62.9 %) was used perform testing and considering the theoretical duty cycle of 63.3% for extended cyclic prefix in the uplink, and the theoretical duty cycle of 62.9% for normal cyclic prefix in uplink, a scaling factor of extended cyclic prefix 63.3%/62.9% = 1.006 is applied to scale-up the measured SAR result.
The Reported TDD LTE SAR = measured SAR (W/kg)* Tune-up Scaling Factor* scaling factor for extended cyclic prefix.
2. Per KDB 447498 D01v06, for each exposure position, testing of other required channels within the operating mode of a frequency band is not required when the *reported* 1-g or 10-g SAR for the mid-band or highest output power channel is:
 - ≤ 0.8 W/kg or 2.0 W/kg, for 1-g or 10-g respectively, when the transmission band is ≤ 100 MHz
 - ≤ 0.6 W/kg or 1.5 W/kg, for 1-g or 10-g respectively, when the transmission band is between 100 MHz and 200 MHz
 - ≤ 0.4 W/kg or 1.0 W/kg, for 1-g or 10-g respectively, when the transmission band is ≥ 200 MHz
3. Per KDB 865664 D01v01r04, for each frequency band, repeated SAR measurement is required only when the measured SAR is ≥ 0.8 W/kg.
4. When hotspot mode is enabled, power reduction will be activated to limit the maximum power of GSM1900, WCDMA B2 and LTE B2.
5. Per KDB 648474 D04v01r03, when the reported SAR for a body-worn accessory measured without a headset connected to the handset is ≤ 1.2 W/kg, SAR testing with a headset connected to the handset is not required.
6. Per KDB648474 D04v01r03, for smart phones with a display diagonal dimension > 15.0 cm or an overall diagonal dimension > 16.0 cm, when hotspot mode applies, 10-g product specific SAR is required only for the surfaces and edges with hotspot mode 1-g reported SAR > 1.2 W/kg, however, when power reduction applies to hotspot mode the measured SAR must be scaled to the maximum output power, including tolerance, allowed for phablet modes to compare with the 1.2 W/kg SAR test reduction threshold, for this device only bottom side SAR for WWAN transmitter scaled to maximum output power is higher than 1.2W/kg of GSM1900, WCDMA B2 and LTE B2, therefore product specific SAR is necessary.
7. For 5GHz WLAN product specific SAR is necessary too, due to an overall diagonal dimension is > 16 cm.
8. In this report, the 10g SAR results which is submitted voluntarily.

GSM Note:

1. Per KDB 941225 D01v03r01, for SAR test reduction for GSM / GPRS / EDGE / DTM modes is determined by the source-based time-averaged output power including tune-up tolerance. The mode with highest specified time-averaged output power should be tested for SAR compliance in the applicable exposure conditions. For modes with the same specified maximum output power and tolerance, the higher number time-slot configuration should be tested. Therefore, the GPRS (4Tx slots) for GSM850/GSM1900 is considered as the primary mode.
2. Other configurations of GSM / GPRS / EDGE / DTM are considered as secondary modes. The 3G SAR test reduction procedure is applied, when the maximum output power and tune-up tolerance specified for production units in a secondary mode is $\leq 1/4$ dB higher than the primary mode, SAR measurement is not required for the secondary mode.
3. Power reduction which is triggered by hotspot mode is implemented in GSM1900 band, for hotspot mode SAR testing EUT was set in reduced power mode and GPRS 4Tx slot due to its highest frame-average power.

**UMTS Note:**

1. Per KDB 941225 D01v03r01, for SAR testing is measured using a 12.2 kbps RMC with TPC bits configured to all "1's".
2. Per KDB 941225 D01v03r01, RMC 12.2kbps setting is used to evaluate SAR. The maximum output power and tune-up tolerance specified for production units in HSDPA / HSUPA / DC-HSDPA is $\leq \frac{1}{4}$ dB higher than RMC 12.2Kbps or when the highest reported SAR of the RMC12.2Kbps is scaled by the ratio of specified maximum output power and tune-up tolerance of HSDPA / HSUPA / DC-HSDPA to RMC12.2Kbps and the adjusted SAR is ≤ 1.2 W/kg, SAR measurement is not required for HSDPA / HSUPA / DC-HSDPA, and according to the following RF output power, the output power results of the secondary modes (HSUPA, HSDPA, DC-HSDPA) are less than $\frac{1}{4}$ dB higher than the primary modes; therefore, SAR measurement is not required for HSDPA / HSUPA / DC-HSDPA.

LTE Note:

1. Per KDB 941225 D05v02r05, start with the largest channel bandwidth and measure SAR for QPSK with 1 RB allocation, using the RB offset and required test channel combination with the highest maximum output power for RB offsets at the upper edge, middle and lower edge of each required test channel.
2. Per KDB 941225 D05v02r05, 50% RB allocation for QPSK SAR testing follows 1RB QPSK allocation procedure.
3. Per KDB 941225 D05v02r05, For QPSK with 100% RB allocation, SAR is not required when the highest maximum output power for 100 % RB allocation is less than the highest maximum output power in 50% and 1 RB allocations and the highest reported SAR for 1 RB and 50% RB allocation are ≤ 0.8 W/kg. Otherwise, SAR is measured for the highest output power channel; and if the reported SAR is > 1.45 W/kg, the remaining required test channels must also be tested.
4. Per KDB 941225 D05v02r05, 16QAM output power for each RB allocation configuration is $> \text{not } \frac{1}{2}$ dB higher than the same configuration in QPSK and the reported SAR for the QPSK configuration is ≤ 1.45 W/kg; Per KDB 941225 D05v02r05, 16QAM SAR testing is not required.
5. Per KDB 941225 D05v02r05, Smaller bandwidth output power for each RB allocation configuration is $> \text{not } \frac{1}{2}$ dB higher than the same configuration in the largest supported bandwidth, and the reported SAR for the largest supported bandwidth is ≤ 1.45 W/kg; Per KDB 941225 D05v02r05, smaller bandwidth SAR testing is not required.
6. For LTE B4 the maximum bandwidth does not support three non-overlapping channels, per KDB 941225 D05v02r05, when a device supports overlapping channel assignment in a channel bandwidth configuration, the middle channel of the group of overlapping channels should be selected for testing.

WLAN Note:

1. Per KDB 248227 D01v02r02, for 2.4GHz 802.11g/n SAR testing is not required when the highest reported SAR for DSSS is adjusted by the ratio of OFDM to DSSS specified maximum output power and the adjusted SAR is ≤ 1.2 W/kg.
2. Per KDB 248227 D01v02r02, U-NII-1 SAR testing is not required when the U-NII-2A band highest reported SAR for a test configuration is ≤ 1.2 W/kg, SAR is not required for U-NII-1 band.
3. When the reported SAR of the test position is > 0.4 W/kg, SAR is repeated for the 802.11 transmission mode configuration tested in the initial test position to measure the subsequent next closet/smallest test separation distance and maximum coupling test position on the highest maximum output power channel, until the report SAR is ≤ 0.8 W/kg or all required test position are tested.
4. For all positions / configurations, when the reported SAR is > 0.8 W/kg, SAR is measured for these test positions / configurations on the subsequent next highest measured output power channel(s) until the reported SAR is ≤ 1.2 W/kg or all required channels are tested.
5. During SAR testing the WLAN transmission was verified using a spectrum analyzer.



13.1 Head SAR

<GSM SAR>

Table with 14 columns: Plot No., Band, Mode, Test Position, Gap (mm), Ch., Freq. (MHz), Average Power (dBm), Tune-Up Limit (dBm), Tune-up Scaling Factor, Power Drift (dB), Measured 1g SAR (W/kg), Reported 1g SAR (W/kg), Measured 10g SAR (W/kg), Reported 10g SAR (W/kg). Rows include GSM850 and GSM1900 bands for various test positions.

<WCDMA SAR>

Table with 14 columns: Plot No., Band, Mode, Test Position, Gap (mm), Ch., Freq. (MHz), Average Power (dBm), Tune-Up Limit (dBm), Tune-up Scaling Factor, Power Drift (dB), Measured 1g SAR (W/kg), Reported 1g SAR (W/kg), Measured 10g SAR (W/kg), Reported 10g SAR (W/kg). Rows include WCDMA II and WCDMA V bands for various test positions.

<FDD LTE SAR>

Table with 16 columns: Plot No., Band, BW (MHz), Modulation, RB Size, RB offset, Test Position, Gap (mm), Ch., Freq. (MHz), Average Power (dBm), Tune-Up Limit (dBm), Tune-up Scaling Factor, Power Drift (dB), Measured 1g SAR (W/kg), Reported 1g SAR (W/kg), Measured 10g SAR (W/kg), Reported 10g SAR (W/kg). Rows include LTE Bands 2, 5, and 7 for various test positions.

<TDD LTE SAR>

Plot No.	Band	BW (MHz)	Modulation	RB Size	RB offset	Test Position	Gap (mm)	Ch.	Freq. (MHz)	Average Power (dBm)	Tune-Up Limit (dBm)	Tune-up Scaling Factor	Duty Cycle %	Duty Cycle Scaling Factor	Power Drift (dB)	Measured 1g SAR (W/kg)	Reported 1g SAR (W/kg)	Measured 10g SAR (W/kg)	Reported 10g SAR (W/kg)
	LTE Band 41	20M	QPSK	1	0	Right Cheek	0mm	40340	2565	24.26	24.50	1.057	62.9	1.006	0.07	0.114	0.121	0.061	0.065
	LTE Band 41	20M	QPSK	50	0	Right Cheek	0mm	40340	2565	23.25	23.50	1.059	62.9	1.006	0.06	0.086	0.092	0.047	0.050
	LTE Band 41	20M	QPSK	1	0	Right Tilted	0mm	40340	2565	24.26	24.50	1.057	62.9	1.006	0.06	0.086	0.091	0.047	0.050
	LTE Band 41	20M	QPSK	50	0	Right Tilted	0mm	40340	2565	23.25	23.50	1.059	62.9	1.006	0.11	0.071	0.076	0.036	0.038
08	LTE Band 41	20M	QPSK	1	0	Left Cheek	0mm	40340	2565	24.26	24.50	1.057	62.9	1.006	0.15	0.137	0.146	0.073	0.078
	LTE Band 41	20M	QPSK	50	0	Left Cheek	0mm	40340	2565	23.25	23.50	1.059	62.9	1.006	0.10	0.104	0.111	0.055	0.059
	LTE Band 41	20M	QPSK	1	0	Left Tilted	0mm	40340	2565	24.26	24.50	1.057	62.9	1.006	0.01	0.055	0.058	0.028	0.030
	LTE Band 41	20M	QPSK	50	0	Left Tilted	0mm	40340	2565	23.25	23.50	1.059	62.9	1.006	0.05	0.042	0.045	0.021	0.022

<WLAN SAR>

Plot No.	Band	Mode	Test Position	Gap (mm)	Ch.	Freq. (MHz)	Average Power (dBm)	Tune-Up Limit (dBm)	Tune-up Scaling Factor	Duty Cycle %	Duty Cycle Scaling Factor	Power Drift (dB)	Measured 1g SAR (W/kg)	Reported 1g SAR (W/kg)	Measured 10g SAR (W/kg)	Reported 10g SAR (W/kg)
	WLAN2.4GHz	802.11b 1Mbps	Right Cheek	0mm	1	2412	16.81	17.00	1.045	99.05	1.010	0.01	0.373	0.394	0.184	0.194
	WLAN2.4GHz	802.11b 1Mbps	Right Tilted	0mm	1	2412	16.81	17.00	1.045	99.05	1.010	-0.13	0.296	0.312	0.150	0.158
	WLAN2.4GHz	802.11b 1Mbps	Left Cheek	0mm	1	2412	16.81	17.00	1.045	99.05	1.010	-0.04	0.560	0.591	0.260	0.274
09	WLAN2.4GHz	802.11b 1Mbps	Left Tilted	0mm	1	2412	16.81	17.00	1.045	99.05	1.010	-0.19	0.603	0.636	0.281	0.297
	WLAN5GHz	802.11a 6Mbps	Right Cheek	0mm	60	5300	15.47	15.50	1.006	95.39	1.048	-0.13	0.494	0.521	0.178	0.188
	WLAN5GHz	802.11a 6Mbps	Right Tilted	0mm	60	5300	15.47	15.50	1.006	95.39	1.048	0.01	0.524	0.552	0.179	0.189
	WLAN5GHz	802.11a 6Mbps	Left Cheek	0mm	60	5300	15.47	15.50	1.006	95.39	1.048	-0.13	0.706	0.744	0.236	0.249
10	WLAN5GHz	802.11a 6Mbps	Left Tilted	0mm	60	5300	15.47	15.50	1.006	95.39	1.048	-0.07	0.708	0.746	0.238	0.251
	WLAN5GHz	802.11a 6Mbps	Right Cheek	0mm	100	5500	15.48	15.50	1.003	95.39	1.048	-0.19	0.372	0.391	0.125	0.131
	WLAN5GHz	802.11a 6Mbps	Right Tilted	0mm	100	5500	15.48	15.50	1.003	95.39	1.048	-0.07	0.443	0.466	0.137	0.144
11	WLAN5GHz	802.11a 6Mbps	Left Cheek	0mm	100	5500	15.48	15.50	1.003	95.39	1.048	-0.16	0.449	0.472	0.157	0.165
	WLAN5GHz	802.11a 6Mbps	Left Tilted	0mm	100	5500	15.48	15.50	1.003	95.39	1.048	-0.13	0.436	0.459	0.150	0.158
	WLAN5GHz	802.11a 6Mbps	Right Cheek	0mm	149	5745	15.48	15.50	1.003	95.39	1.048	-0.13	0.558	0.587	0.192	0.202
	WLAN5GHz	802.11a 6Mbps	Right Tilted	0mm	149	5745	15.48	15.50	1.003	95.39	1.048	-0.01	0.567	0.596	0.194	0.204
12	WLAN5GHz	802.11a 6Mbps	Left Cheek	0mm	149	5745	15.48	15.50	1.003	95.39	1.048	-0.03	0.673	0.708	0.228	0.240
	WLAN5GHz	802.11a 6Mbps	Left Tilted	0mm	149	5745	15.48	15.50	1.003	95.39	1.048	-0.11	0.604	0.635	0.209	0.220

<Bluetooth SAR>

Plot No.	Band	Mode	Test Position	Gap (mm)	Ch.	Freq. (MHz)	Average Power (dBm)	Tune-Up Limit (dBm)	Tune-up Scaling Factor	Duty Cycle %	Duty Cycle Scaling Factor	Power Drift (dB)	Measured 1g SAR (W/kg)	Reported 1g SAR (W/kg)	Measured 10g SAR (W/kg)	Reported 10g SAR (W/kg)
	Bluetooth	1Mbps	Right Cheek	0mm	78	2480	11.17	11.50	1.079	77.13	1.080	-0.14	0.120	0.140	0.064	0.075
	Bluetooth	1Mbps	Right Tilted	0mm	78	2480	11.17	11.50	1.079	77.13	1.080	-0.11	0.100	0.117	0.053	0.062
	Bluetooth	1Mbps	Left Cheek	0mm	78	2480	11.17	11.50	1.079	77.13	1.080	-0.17	0.174	0.203	0.087	0.101
13	Bluetooth	1Mbps	Left Tilted	0mm	78	2480	11.17	11.50	1.079	77.13	1.080	0.00	0.180	0.210	0.088	0.103



13.2 Hotspot SAR

<GSM SAR>

Plot No.	Band	Mode	Test Position	Gap (mm)	Power Reduction	Ch.	Freq. (MHz)	Average Power (dBm)	Tune-Up Limit (dBm)	Tune-up Scaling Factor	Power Drift (dB)	Measured 1g SAR (W/kg)	Reported 1g SAR (W/kg)	Measured 10g SAR (W/kg)	Reported 10g SAR (W/kg)
	GSM850	GPRS (4 Tx slots)	Front	10mm	OFF	189	836.4	27.35	28.00	1.161	-0.17	0.290	0.337	0.226	0.262
14	GSM850	GPRS (4 Tx slots)	Back	10mm	OFF	189	836.4	27.35	28.00	1.161	0.15	0.492	0.571	0.372	0.432
	GSM850	GPRS (4 Tx slots)	Left Side	10mm	OFF	189	836.4	27.35	28.00	1.161	0.04	0.203	0.236	0.142	0.165
	GSM850	GPRS (4 Tx slots)	Right Side	10mm	OFF	189	836.4	27.35	28.00	1.161	0.01	0.365	0.424	0.254	0.295
	GSM850	GPRS (4 Tx slots)	Bottom Side	10mm	OFF	189	836.4	27.35	28.00	1.161	0.01	0.179	0.208	0.095	0.110
	GSM1900	GPRS (4 Tx slots)	Front	10mm	ON	661	1880	23.70	24.00	1.072	-0.04	0.297	0.318	0.150	0.161
	GSM1900	GPRS (4 Tx slots)	Back	10mm	ON	661	1880	23.70	24.00	1.072	-0.03	0.458	0.491	0.236	0.253
	GSM1900	GPRS (4 Tx slots)	Left Side	10mm	ON	661	1880	23.70	24.00	1.072	-0.07	0.013	0.014	0.009	0.010
	GSM1900	GPRS (4 Tx slots)	Right Side	10mm	ON	661	1880	23.70	24.00	1.072	0.08	0.014	0.015	0.008	0.008
15	GSM1900	GPRS (4 Tx slots)	Bottom Side	10mm	ON	661	1880	23.70	24.00	1.072	-0.05	0.899	0.963	0.449	0.481
	GSM1900	GPRS (4 Tx slots)	Bottom Side	10mm	ON	512	1850.2	23.60	24.00	1.096	-0.03	0.841	0.922	0.416	0.456
	GSM1900	GPRS (4 Tx slots)	Bottom Side	10mm	ON	810	1909.8	23.26	24.00	1.186	0.11	0.808	0.958	0.391	0.464

<WCDMA SAR>

Plot No.	Band	Mode	Test Position	Gap (mm)	Power Reduction	Ch.	Freq. (MHz)	Average Power (dBm)	Tune-Up Limit (dBm)	Tune-up Scaling Factor	Power Drift (dB)	Measured 1g SAR (W/kg)	Reported 1g SAR (W/kg)	Measured 10g SAR (W/kg)	Reported 10g SAR (W/kg)
	WCDMA II	RMC 12.2Kbps	Front	10mm	ON	9538	1907.6	20.50	20.50	1.000	0.04	0.414	0.414	0.210	0.210
	WCDMA II	RMC 12.2Kbps	Back	10mm	ON	9538	1907.6	20.50	20.50	1.000	-0.01	0.685	0.685	0.349	0.349
	WCDMA II	RMC 12.2Kbps	Left Side	10mm	ON	9538	1907.6	20.50	20.50	1.000	-0.01	0.019	0.019	0.011	0.011
	WCDMA II	RMC 12.2Kbps	Right Side	10mm	ON	9538	1907.6	20.50	20.50	1.000	0.07	0.022	0.022	0.013	0.013
16	WCDMA II	RMC 12.2Kbps	Bottom Side	10mm	ON	9538	1907.6	20.50	20.50	1.000	0.01	0.993	0.993	0.491	0.491
	WCDMA II	RMC 12.2Kbps	Bottom Side	10mm	ON	9262	1852.4	20.42	20.50	1.019	-0.02	0.586	0.597	0.293	0.298
	WCDMA II	RMC 12.2Kbps	Bottom Side	10mm	ON	9400	1880	20.29	20.50	1.050	-0.01	0.749	0.786	0.373	0.391
	WCDMA V	RMC 12.2Kbps	Front	10mm	OFF	4182	836.4	23.77	24.50	1.183	0.00	0.144	0.170	0.112	0.133
17	WCDMA V	RMC 12.2Kbps	Back	10mm	OFF	4182	836.4	23.77	24.50	1.183	-0.01	0.232	0.274	0.176	0.208
	WCDMA V	RMC 12.2Kbps	Left Side	10mm	OFF	4182	836.4	23.77	24.50	1.183	0.05	0.109	0.129	0.076	0.090
	WCDMA V	RMC 12.2Kbps	Right Side	10mm	OFF	4182	836.4	23.77	24.50	1.183	0.01	0.149	0.176	0.103	0.122
	WCDMA V	RMC 12.2Kbps	Bottom Side	10mm	OFF	4182	836.4	23.77	24.50	1.183	0.17	0.069	0.082	0.037	0.044

<FDD LTE SAR>

Plot No.	Band	BW (MHz)	Modulation	RB Size	RB offset	Test Position	Gap (mm)	Power Reduction	Ch.	Freq. (MHz)	Average Power (dBm)	Tune-Up Limit (dBm)	Tune-up Scaling Factor	Power Drift (dB)	Measured 1g SAR (W/kg)	Reported 1g SAR (W/kg)	Measured 10g SAR (W/kg)	Reported 10g SAR (W/kg)
	LTE Band 2	20M	QPSK	1	0	Front	10mm	ON	18900	1880	19.91	21.00	1.285	-0.02	0.377	0.485	0.191	0.245
	LTE Band 2	20M	QPSK	50	24	Front	10mm	ON	18900	1880	19.92	21.00	1.282	0.08	0.347	0.445	0.175	0.224
	LTE Band 2	20M	QPSK	1	0	Back	10mm	ON	18900	1880	19.91	21.00	1.285	-0.05	0.464	0.596	0.243	0.312
	LTE Band 2	20M	QPSK	50	24	Back	10mm	ON	18900	1880	19.92	21.00	1.282	-0.06	0.576	0.739	0.264	0.339
	LTE Band 2	20M	QPSK	1	0	Left side	10mm	ON	18900	1880	19.91	21.00	1.285	0.01	0.360	0.463	0.182	0.234
	LTE Band 2	20M	QPSK	50	24	Left side	10mm	ON	18900	1880	19.92	21.00	1.282	0.08	0.014	0.018	0.009	0.012
	LTE Band 2	20M	QPSK	1	0	Right side	10mm	ON	18900	1880	19.91	21.00	1.285	-0.06	0.015	0.019	0.009	0.012
	LTE Band 2	20M	QPSK	50	24	Right side	10mm	ON	18900	1880	19.92	21.00	1.282	-0.03	0.017	0.022	0.011	0.014
	LTE Band 2	20M	QPSK	1	0	Bottom side	10mm	ON	18900	1880	19.91	21.00	1.285	-0.11	0.675	0.868	0.339	0.436
	LTE Band 2	20M	QPSK	1	0	Bottom Side	10mm	ON	18700	1860	19.90	21.00	1.288	-0.03	0.274	0.353	0.151	0.195
	LTE Band 2	20M	QPSK	1	0	Bottom Side	10mm	ON	19100	1900	19.78	21.00	1.324	0.03	0.408	0.540	0.222	0.294
18	LTE Band 2	20M	QPSK	50	24	Bottom side	10mm	ON	18900	1880	19.92	21.00	1.282	-0.03	0.742	0.951	0.372	0.477
	LTE Band 2	20M	QPSK	50	50	Bottom Side	10mm	ON	18700	1860	19.91	21.00	1.285	-0.05	0.318	0.409	0.174	0.224
	LTE Band 2	20M	QPSK	50	0	Bottom Side	10mm	ON	19100	1900	19.78	21.00	1.324	-0.07	0.428	0.567	0.232	0.307
	LTE Band 2	20M	QPSK	100	0	Bottom Side	10mm	ON	18700	1860	19.95	21.00	1.274	-0.03	0.307	0.391	0.168	0.214
	LTE Band 5	10M	QPSK	1	0	Front	10mm	OFF	20525	836.5	23.86	24.50	1.159	0.03	0.140	0.162	0.109	0.126
	LTE Band 5	10M	QPSK	25	0	Front	10mm	OFF	20525	836.5	22.90	23.50	1.148	-0.03	0.112	0.129	0.087	0.100
19	LTE Band 5	10M	QPSK	1	0	Back	10mm	OFF	20525	836.5	23.86	24.50	1.159	0.01	0.214	0.248	0.163	0.189
	LTE Band 5	10M	QPSK	25	0	Back	10mm	OFF	20525	836.5	22.90	23.50	1.148	0.04	0.150	0.172	0.095	0.109
	LTE Band 5	10M	QPSK	1	0	Left Side	10mm	OFF	20525	836.5	23.86	24.50	1.159	0.02	0.088	0.102	0.061	0.071
	LTE Band 5	10M	QPSK	25	0	Left Side	10mm	OFF	20525	836.5	22.90	23.50	1.148	-0.05	0.072	0.083	0.050	0.057
	LTE Band 5	10M	QPSK	1	0	Right Side	10mm	OFF	20525	836.5	23.86	24.50	1.159	0.01	0.150	0.174	0.104	0.121
	LTE Band 5	10M	QPSK	25	0	Right Side	10mm	OFF	20525	836.5	22.90	23.50	1.148	0.05	0.119	0.137	0.083	0.095
	LTE Band 5	10M	QPSK	1	0	Bottom Side	10mm	OFF	20525	836.5	23.86	24.50	1.159	-0.08	0.069	0.080	0.037	0.043
	LTE Band 5	10M	QPSK	25	0	Bottom Side	10mm	OFF	20525	836.5	22.90	23.50	1.148	-0.09	0.056	0.064	0.030	0.034
	LTE Band 7	20M	QPSK	1	0	Front	10mm	OFF	21100	2535	24.33	24.50	1.040	0.08	0.521	0.542	0.268	0.279
	LTE Band 7	20M	QPSK	50	0	Front	10mm	OFF	21100	2535	23.32	23.50	1.042	-0.02	0.419	0.437	0.216	0.225
20	LTE Band 7	20M	QPSK	1	0	Back	10mm	OFF	21100	2535	24.33	24.50	1.040	0.19	0.746	0.776	0.345	0.359
	LTE Band 7	20M	QPSK	50	0	Back	10mm	OFF	21100	2535	23.32	23.50	1.042	0.11	0.593	0.618	0.273	0.285
	LTE Band 7	20M	QPSK	1	0	Left Side	10mm	OFF	21100	2535	24.33	24.50	1.040	0.10	0.397	0.413	0.198	0.206
	LTE Band 7	20M	QPSK	50	0	Left Side	10mm	OFF	21100	2535	23.32	23.50	1.042	0.06	0.313	0.326	0.158	0.165
	LTE Band 7	20M	QPSK	1	0	Right Side	10mm	OFF	21100	2535	24.33	24.50	1.040	0.12	0.089	0.093	0.041	0.043
	LTE Band 7	20M	QPSK	50	0	Right Side	10mm	OFF	21100	2535	23.32	23.50	1.042	-0.05	0.056	0.058	0.033	0.034
	LTE Band 7	20M	QPSK	1	0	Bottom Side	10mm	OFF	21100	2535	24.33	24.50	1.040	0.06	0.376	0.391	0.202	0.210
	LTE Band 7	20M	QPSK	50	0	Bottom Side	10mm	OFF	21100	2535	23.32	23.50	1.042	-0.04	0.299	0.312	0.160	0.167

<TDD LTE SAR>

Plot No.	Band	BW (MHz)	Modulation	RB Size	RB offset	Test Position	Gap (mm)	Power Reduction	Ch.	Freq. (MHz)	Average Power (dBm)	Tune-Up Limit (dBm)	Tune-up Scaling Factor	Duty Cycle %	Duty Cycle Scaling Factor	Power Drift (dB)	Measured 1g SAR (W/kg)	Reported 1g SAR (W/kg)	Measured 10g SAR (W/kg)	Reported 10g SAR (W/kg)
	LTE Band 41	20M	QPSK	1	0	Front	10mm	OFF	40340	2565	24.26	24.50	1.057	62.9	1.006	0.02	0.189	0.201	0.096	0.102
	LTE Band 41	20M	QPSK	50	0	Front	10mm	OFF	40340	2565	23.25	23.50	1.059	62.9	1.006	-0.09	0.150	0.160	0.076	0.081
21	LTE Band 41	20M	QPSK	1	0	Back	10mm	OFF	40340	2565	24.26	24.50	1.057	62.9	1.006	0.12	0.283	0.301	0.130	0.138
	LTE Band 41	20M	QPSK	50	0	Back	10mm	OFF	40340	2565	23.25	23.50	1.059	62.9	1.006	0.03	0.224	0.239	0.102	0.109
	LTE Band 41	20M	QPSK	1	0	Left Side	10mm	OFF	40340	2565	24.26	24.50	1.057	62.9	1.006	0.07	0.118	0.125	0.058	0.062
	LTE Band 41	20M	QPSK	50	0	Left Side	10mm	OFF	40340	2565	23.25	23.50	1.059	62.9	1.006	-0.11	0.091	0.097	0.045	0.048
	LTE Band 41	20M	QPSK	1	0	Right Side	10mm	OFF	40340	2565	24.26	24.50	1.057	62.9	1.006	-0.13	0.097	0.103	0.044	0.047
	LTE Band 41	20M	QPSK	50	0	Right Side	10mm	OFF	40340	2565	23.25	23.50	1.059	62.9	1.006	0.07	0.058	0.062	0.034	0.036
	LTE Band 41	20M	QPSK	1	0	Bottom Side	10mm	OFF	40340	2565	24.26	24.50	1.057	62.9	1.006	-0.11	0.124	0.132	0.065	0.069
	LTE Band 41	20M	QPSK	50	0	Bottom Side	10mm	OFF	40340	2565	23.25	23.50	1.059	62.9	1.006	0.07	0.097	0.103	0.051	0.054



<WLAN SAR>

Plot No.	Band	Test Position	Gap (mm)	Ch.	Freq. (MHz)	Average Power (dBm)	Tune-Up Limit (dBm)	Tune-up Scaling Factor	Duty Cycle %	Duty Cycle Scaling Factor	Power Drift (dB)	Measured 1g SAR (W/kg)	Reported 1g SAR (W/kg)	Measured 10g SAR (W/kg)	Reported 10g SAR (W/kg)
	WLAN2.4GHz	Front	10mm	1	2412	16.81	17.00	1.045	99.05	1.010	0.01	0.083	0.088	0.045	0.047
	WLAN2.4GHz	Back	10mm	1	2412	16.81	17.00	1.045	99.05	1.010	0.09	0.118	0.125	0.056	0.059
	WLAN2.4GHz	Right Side	10mm	1	2412	16.81	17.00	1.045	99.05	1.010	0.01	0.080	0.044	0.025	0.026
22	WLAN2.4GHz	Top Side	10mm	1	2412	16.81	17.00	1.045	99.05	1.010	-0.07	0.154	0.162	0.078	0.082

<Bluetooth SAR>

Plot No.	Band	Test Position	Gap (mm)	Ch.	Freq. (MHz)	Average Power (dBm)	Tune-Up Limit (dBm)	Tune-up Scaling Factor	Duty Cycle %	Duty Cycle Scaling Factor	Power Drift (dB)	Measured 1g SAR (W/kg)	Reported 1g SAR (W/kg)	Measured 10g SAR (W/kg)	Reported 10g SAR (W/kg)
	Bluetooth	Front	10mm	78	2480	11.17	11.50	1.079	77.13	1.080	0.03	0.011	0.013	0.004	0.005
23	Bluetooth	Back	10mm	78	2480	11.17	11.50	1.079	77.13	1.080	0.04	0.021	0.024	0.010	0.012
	Bluetooth	Right Side	10mm	78	2480	11.17	11.50	1.079	77.13	1.080	-0.02	0.009	0.011	0.004	0.005
	Bluetooth	Top Side	10mm	78	2480	11.17	11.50	1.079	77.13	1.080	-0.07	0.019	0.022	0.009	0.010

13.3 Body Worn Accessory SAR

<GSM SAR>

Plot No.	Band	Mode	Test Position	Gap (mm)	Ch.	Freq. (MHz)	Average Power (dBm)	Tune-Up Limit (dBm)	Tune-up Scaling Factor	Power Drift (dB)	Measured 1g SAR (W/kg)	Reported 1g SAR (W/kg)	Measured 10g SAR (W/kg)	Reported 10g SAR (W/kg)
	GSM850	GPRS (4 Tx slots)	Front	15mm	189	836.4	27.35	28.00	1.161	0.01	0.265	0.308	0.205	0.238
24	GSM850	GPRS (4 Tx slots)	Back	15mm	189	836.4	27.35	28.00	1.161	-0.07	0.428	0.497	0.324	0.376
	GSM1900	GPRS (4 Tx slots)	Front	15mm	661	1880	24.99	25.00	1.002	-0.03	0.215	0.215	0.118	0.118
25	GSM1900	GPRS (4 Tx slots)	Back	15mm	661	1880	24.99	25.00	1.002	0.01	0.306	0.307	0.172	0.172

<WCDMA SAR>

Plot No.	Band	Mode	Test Position	Gap (mm)	Ch.	Freq. (MHz)	Average Power (dBm)	Tune-Up Limit (dBm)	Tune-up Scaling Factor	Power Drift (dB)	Measured 1g SAR (W/kg)	Reported 1g SAR (W/kg)	Measured 10g SAR (W/kg)	Reported 10g SAR (W/kg)
	WCDMA II	RMC 12.2Kbps	Front	15mm	9538	1907.6	22.69	23.00	1.074	0.04	0.406	0.436	0.223	0.239
26	WCDMA II	RMC 12.2Kbps	Back	15mm	9538	1907.6	22.69	23.00	1.074	0.02	0.642	0.690	0.352	0.378
	WCDMA V	RMC 12.2Kbps	Front	15mm	4182	836.4	23.77	24.50	1.183	0.04	0.135	0.160	0.104	0.123
27	WCDMA V	RMC 12.2Kbps	Back	15mm	4182	836.4	23.77	24.50	1.183	0.02	0.195	0.231	0.147	0.174

<FDD LTE SAR>

Plot No.	Band	BW (MHz)	Modulation	RB Size	RB offset	Test Position	Gap (mm)	Ch.	Freq. (MHz)	Average Power (dBm)	Tune-Up Limit (dBm)	Tune-up Scaling Factor	Power Drift (dB)	Measured 1g SAR (W/kg)	Reported 1g SAR (W/kg)	Measured 10g SAR (W/kg)	Reported 10g SAR (W/kg)
	LTE Band 2	20M	QPSK	1	0	Front	15mm	18900	1880	22.59	23.00	1.099	0.03	0.232	0.255	0.129	0.142
	LTE Band 2	20M	QPSK	50	0	Front	15mm	18700	1860	21.45	22.00	1.135	0.03	0.160	0.182	0.089	0.101
28	LTE Band 2	20M	QPSK	1	0	Back	15mm	18900	1880	22.59	23.00	1.099	-0.04	0.354	0.389	0.197	0.217
	LTE Band 2	20M	QPSK	50	0	Back	15mm	18700	1860	21.45	22.00	1.135	-0.01	0.245	0.278	0.137	0.155
	LTE Band 5	10M	QPSK	1	0	Front	15mm	20525	836.5	23.86	24.50	1.159	-0.01	0.130	0.151	0.101	0.117
	LTE Band 5	10M	QPSK	25	0	Front	15mm	20525	836.5	22.90	23.50	1.148	0.00	0.104	0.119	0.081	0.093
29	LTE Band 5	10M	QPSK	1	0	Back	15mm	20525	836.5	23.86	24.50	1.159	0.05	0.182	0.211	0.138	0.160
	LTE Band 5	10M	QPSK	25	0	Back	15mm	20525	836.5	22.90	23.50	1.148	0.01	0.146	0.168	0.111	0.127
30	LTE Band 7	20M	QPSK	1	0	Front	15mm	21100	2535	24.33	24.50	1.040	-0.05	0.308	0.320	0.176	0.183
	LTE Band 7	20M	QPSK	50	0	Front	15mm	21100	2535	23.32	23.50	1.042	-0.02	0.246	0.256	0.140	0.146
	LTE Band 7	20M	QPSK	1	0	Back	15mm	21100	2535	24.33	24.50	1.040	-0.04	0.290	0.302	0.144	0.150
	LTE Band 7	20M	QPSK	50	0	Back	15mm	21100	2535	23.32	23.50	1.042	0.09	0.234	0.244	0.115	0.120

<TDD LTE SAR>

Plot No.	Band	BW (MHz)	Modulation	RB Size	RB offset	Test Position	Gap (mm)	Ch.	Freq. (MHz)	Average Power (dBm)	Tune-Up Limit (dBm)	Tune-up Scaling Factor	Duty Cycle %	Duty Cycle Scaling Factor	Power Drift (dB)	Measured 1g SAR (W/kg)	Reported 1g SAR (W/kg)	Measured 10g SAR (W/kg)	Reported 10g SAR (W/kg)
	LTE Band 41	20M	QPSK	1	0	Front	15mm	40340	2565	24.26	24.50	1.057	62.9	1.006	-0.01	0.115	0.122	0.054	0.057
	LTE Band 41	20M	QPSK	50	0	Front	15mm	40340	2565	23.25	23.50	1.059	62.9	1.006	-0.08	0.090	0.096	0.051	0.054
31	LTE Band 41	20M	QPSK	1	0	Back	15mm	40340	2565	24.26	24.50	1.057	62.9	1.006	0.02	0.116	0.123	0.056	0.060
	LTE Band 41	20M	QPSK	50	0	Back	15mm	40340	2565	23.25	23.50	1.059	62.9	1.006	0.14	0.092	0.098	0.045	0.048

<WLAN SAR>

Plot No.	Band	Mode	Test Position	Gap (mm)	Ch.	Freq. (MHz)	Average Power (dBm)	Tune-Up Limit (dBm)	Tune-up Scaling Factor	Duty Cycle %	Duty Cycle Scaling Factor	Power Drift (dB)	Measured 1g SAR (W/kg)	Reported 1g SAR (W/kg)	Measured 10g SAR (W/kg)	Reported 10g SAR (W/kg)
	WLAN2.4GHz	802.11b 1Mbps	Front	15mm	1	2412	16.81	17.00	1.045	99.05	1.010	-0.03	0.051	0.054	0.028	0.030
32	WLAN2.4GHz	802.11b 1Mbps	Back	15mm	1	2412	16.81	17.00	1.045	99.05	1.010	0.05	0.057	0.060	0.031	0.033
33	WLAN5GHz	802.11a 6Mbps	Front	15mm	60	5300	15.47	15.50	1.006	95.39	1.048	-0.08	0.071	0.075	0.027	0.028
	WLAN5GHz	802.11a 6Mbps	Back	15mm	60	5300	15.47	15.50	1.006	95.39	1.048	-0.04	0.037	0.039	0.014	0.015
34	WLAN5GHz	802.11a 6Mbps	Front	15mm	100	5500	15.48	15.50	1.003	95.39	1.048	-0.05	0.084	0.088	0.032	0.034
	WLAN5GHz	802.11a 6Mbps	Back	15mm	100	5500	15.48	15.50	1.003	95.39	1.048	-0.11	0.043	0.045	0.016	0.017
35	WLAN5GHz	802.11a 6Mbps	Front	15mm	149	5745	15.48	15.50	1.003	95.39	1.048	-0.18	0.086	0.090	0.033	0.035
	WLAN5GHz	802.11a 6Mbps	Back	15mm	149	5745	15.48	15.50	1.003	95.39	1.048	0.12	0.044	0.046	0.017	0.018

<Bluetooth SAR>

Plot No.	Band	Mode	Test Position	Gap (mm)	Ch.	Freq. (MHz)	Average Power (dBm)	Tune-Up Limit (dBm)	Tune-up Scaling Factor	Duty Cycle %	Duty Cycle Scaling Factor	Power Drift (dB)	Measured 1g SAR (W/kg)	Reported 1g SAR (W/kg)	Measured 10g SAR (W/kg)	Reported 10g SAR (W/kg)
	Bluetooth	1Mbps	Front	15mm	78	2480	11.17	11.50	1.079	77.13	1.080	0.00	0.006	0.006	0.002	0.002
36	Bluetooth	1Mbps	Back	15mm	78	2480	11.17	11.50	1.079	77.13	1.080	0.08	0.007	0.008	0.003	0.003



13.4 Product Specific SAR

<GSM SAR>

Plot No.	Band	Mode	Test Position	Gap (mm)	Ch.	Freq. (MHz)	Average Power (dBm)	Tune-Up Limit (dBm)	Tune-up Scaling Factor	Power Drift (dB)	Measured 10g SAR (W/kg)	Reported 10g SAR (W/kg)
	GSM1900	GPRS (4 Tx slots)	Front	0mm	661	1880	24.99	25.00	1.002	-0.01	1.860	1.864
	GSM1900	GPRS (4 Tx slots)	Back	0mm	661	1880	24.99	25.00	1.002	-0.06	2.070	2.075
37	GSM1900	GPRS (4 Tx slots)	Back	0mm	512	1850.2	24.56	25.00	1.107	-0.01	1.990	2.202
	GSM1900	GPRS (4 Tx slots)	Back	0mm	810	1909.8	24.73	25.00	1.064	-0.02	1.790	1.905
	GSM1900	GPRS (4 Tx slots)	Bottom Side	0mm	661	1880	24.99	25.00	1.002	0.10	1.390	1.393

<WCDMA SAR>

Plot No.	Band	Mode	Test Position	Gap (mm)	Ch.	Freq. (MHz)	Average Power (dBm)	Tune-Up Limit (dBm)	Tune-up Scaling Factor	Power Drift (dB)	Measured 10g SAR (W/kg)	Reported 10g SAR (W/kg)
38	WCDMA II	RMC 12.2Kbps	Front	0mm	9538	1907.6	22.69	23.00	1.074	-0.11	2.940	3.158
	WCDMA II	RMC 12.2Kbps	Front	0mm	9262	1852.4	22.49	23.00	1.125	-0.12	2.260	2.542
	WCDMA II	RMC 12.2Kbps	Front	0mm	9400	1880	22.41	23.00	1.146	-0.17	2.540	2.910
	WCDMA II	RMC 12.2Kbps	Back	0mm	9538	1907.6	22.69	23.00	1.074	0.01	2.470	2.653
	WCDMA II	RMC 12.2Kbps	Back	0mm	9262	1852.4	22.49	23.00	1.125	0.05	2.520	2.834
	WCDMA II	RMC 12.2Kbps	Back	0mm	9400	1880	22.41	23.00	1.146	0.02	2.480	2.841
	WCDMA II	RMC 12.2Kbps	Bottom Side	0mm	9538	1907.6	22.69	23.00	1.074	-0.05	0.899	0.966

<FDD LTE SAR>

Plot No.	Band	BW (MHz)	Modulation	RB Size	RB offset	Test Position	Gap (mm)	Ch.	Freq. (MHz)	Average Power (dBm)	Tune-Up Limit (dBm)	Tune-up Scaling Factor	Power Drift (dB)	Measured 10g SAR (W/kg)	Reported 10g SAR (W/kg)
	LTE Band 2	20M	QPSK	1	0	Front	0mm	18900	1880	22.59	23.00	1.099	-0.07	2.500	2.748
	LTE Band 2	20M	QPSK	1	0	Front	0mm	18700	1860	22.54	23.00	1.112	0.02	2.220	2.468
	LTE Band 2	20M	QPSK	1	0	Front	0mm	19100	1900	22.41	23.00	1.146	-0.06	2.770	3.173
	LTE Band 2	20M	QPSK	1	0	Back	0mm	18900	1880	22.59	23.00	1.099	-0.04	2.800	3.077
39	LTE Band 2	20M	QPSK	1	0	Back	0mm	18700	1860	22.54	23.00	1.112	-0.04	2.870	3.191
	LTE Band 2	20M	QPSK	1	0	Back	0mm	19100	1900	22.41	23.00	1.146	-0.06	2.660	3.047
	LTE Band 2	20M	QPSK	1	0	Bottom Side	0mm	18900	1880	22.59	23.00	1.099	0.06	1.130	1.242

<WLAN SAR>

Plot No.	Band	Mode	Test Position	Gap (mm)	Ch.	Freq. (MHz)	Average Power (dBm)	Tune-Up Limit (dBm)	Tune-up Scaling Factor	Duty Cycle %	Duty Cycle Scaling Factor	Power Drift (dB)	Measured 10g SAR (W/kg)	Reported 10g SAR (W/kg)
40	WLAN5GHz	802.11a 6Mbps	Front	0mm	60	5300	15.47	15.50	1.006	95.39	1.048	-0.08	0.517	0.545
	WLAN5GHz	802.11a 6Mbps	Back	0mm	60	5300	15.47	15.50	1.006	95.39	1.048	0.07	0.209	0.220
	WLAN5GHz	802.11a 6Mbps	Right Side	0mm	60	5300	15.47	15.50	1.006	95.39	1.048	-0.12	0.028	0.030
	WLAN5GHz	802.11a 6Mbps	Top Side	0mm	60	5300	15.47	15.50	1.006	95.39	1.048	-0.12	0.236	0.249
41	WLAN5GHz	802.11a 6Mbps	Front	0mm	100	5500	15.48	15.50	1.003	95.39	1.048	-0.06	0.334	0.351
	WLAN5GHz	802.11a 6Mbps	Back	0mm	100	5500	15.48	15.50	1.003	95.39	1.048	-0.12	0.142	0.149
	WLAN5GHz	802.11a 6Mbps	Right Side	0mm	100	5500	15.48	15.50	1.003	95.39	1.048	0.02	0.033	0.035
	WLAN5GHz	802.11a 6Mbps	Top Side	0mm	100	5500	15.48	15.50	1.003	95.39	1.048	-0.17	0.278	0.292
42	WLAN5GHz	802.11a 6Mbps	Front	0mm	149	5745	15.48	15.50	1.003	95.39	1.048	0.18	0.469	0.493
	WLAN5GHz	802.11a 6Mbps	Back	0mm	149	5745	15.48	15.50	1.003	95.39	1.048	0.09	0.332	0.349
	WLAN5GHz	802.11a 6Mbps	Right Side	0mm	149	5745	15.48	15.50	1.003	95.39	1.048	-0.07	0.034	0.036
	WLAN5GHz	802.11a 6Mbps	Top Side	0mm	149	5745	15.48	15.50	1.003	95.39	1.048	0.04	0.285	0.300



13.5 Repeated SAR Measurement

No.	Band	Mode	Test Position	Gap (mm)	Power Reduction	Ch.	Freq. (MHz)	Average Power (dBm)	Tune-Up Limit (dBm)	Tune-up Scaling Factor	Power Drift (dB)	Measured 1g SAR (W/kg)	Ratio	Reported 1g SAR (W/kg)
1st	WCDMA II	RMC 12.2Kbps	Bottom Side	10mm	ON	9538	1907.6	20.50	20.50	1.000	0.01	0.993	-	0.993
2nd	WCDMA II	RMC 12.2Kbps	Bottom Side	10mm	ON	9538	1907.6	20.50	20.50	1.000	0.07	0.971	1.02	0.971

No.	Band	Mode	Test Position	Gap (mm)	Ch.	Freq. (MHz)	Average Power (dBm)	Tune-Up Limit (dBm)	Tune-up Scaling Factor	Power Drift (dB)	Measured 10g SAR (W/kg)	Ratio	Reported 10g SAR (W/kg)
1st	WCDMA II	RMC 12.2Kbps	Front	0mm	9538	1907.6	22.69	23.00	1.074	-0.11	2.940	-	3.158
2nd	WCDMA II	RMC 12.2Kbps	Front	0mm	9538	1907.6	22.69	23.00	1.074	-0.06	2.810	1.05	3.018

General Note:

1. Per KDB 865664 D01v01r04, for each frequency band, repeated SAR measurement is required only when the measured SAR is $\geq 0.8W/kg$.
2. Per KDB 865664 D01v01r04, if the ratio among the repeated measurement is ≤ 1.2 and the measured SAR $< 1.45W/kg$, only one repeated measurement is required.
3. Per KDB 865664 D01v01r04, if the extremity repeated SAR is necessary, the same procedures should be adapted for measurements according to extremity and occupational exposure limits by applying a factor of 2.5 for extremity exposure and a factor of 5 for occupational exposure to the corresponding SAR thresholds.
4. The ratio is the difference in percentage between original and repeated *measured SAR*.
5. All measurement SAR result is scaled-up to account for tune-up tolerance and is compliant.



14. Simultaneous Transmission Analysis

NO.	Simultaneous Transmission Configurations	Portable Handset			
		Head	Body-worn	Hotspot	Product Specific
1.	GSM Voice + 2.4GHz WLAN	Yes	Yes		Yes
2.	GPRS/EDGE + 2.4GHz WLAN	Yes	Yes	Yes	Yes
3.	WCDMA + 2.4GHz WLAN	Yes	Yes	Yes	Yes
4.	LTE + 2.4GHz WLAN	Yes	Yes	Yes	Yes
5.	GSM Voice + Bluetooth	Yes	Yes		Yes
6.	GPRS/EDGE + Bluetooth	Yes	Yes	Yes	Yes
7.	WCDMA + Bluetooth	Yes	Yes	Yes	Yes
8.	LTE + Bluetooth	Yes	Yes	Yes	Yes
9.	GSM Voice + 5GHz WLAN	Yes	Yes		Yes
10.	GPRS/EDGE + 5GHz WLAN	Yes	Yes		Yes
11.	WCDMA + 5GHz WLAN	Yes	Yes		Yes
12.	LTE + 5GHz WLAN	Yes	Yes		Yes

General Note:

1. In this report, the 10g SAR results which is submitted voluntarily.
2. This device WLAN 2.4GHz supports Hotspot operation and Bluetooth support tethering applications.
3. WLAN and Bluetooth share the same antenna, and cannot transmit simultaneously.
4. EUT will choose either WLAN 2.4GHz or WLAN 5GHz according to the network signal condition; therefore, 2.4GHz WLAN and 5GHz WLAN will not operate simultaneously at any moment.
5. The Scaled SAR summation is calculated based on the same configuration and test position.
6. Per KDB 447498 D01v06, simultaneous transmission SAR is compliant if,
 - i) Scalar SAR summation < 1.6W/kg.
 - ii) $SPLSR = (SAR1 + SAR2)^{1.5} / (\text{min. separation distance, mm})$, and the peak separation distance is determined from the square root of $[(x1-x2)^2 + (y1-y2)^2 + (z1-z2)^2]$, where (x1, y1, z1) and (x2, y2, z2) are the coordinates of the extrapolated peak SAR locations in the zoom scan.
 - iii) If $SPLSR \leq 0.04$, simultaneously transmission SAR measurement is not necessary.
 - iv) Simultaneously transmission SAR measurement, and the reported multi-band SAR < 1.6W/kg.



14.1 Head Exposure Conditions

WWAN Band		Exposure Position	1	2	3	4	1+2 Summed 1g SAR (W/kg)	1+3 Summed 1g SAR (W/kg)	1+4 Summed 1g SAR (W/kg)
			WWAN 1g SAR (W/kg)	2.4GHz WLAN 1g SAR (W/kg)	5GHz WLAN 1g SAR (W/kg)	Bluetooth 1g SAR (W/kg)			
GSM	GSM850	Right Cheek	0.290	0.394	0.587	0.140	0.68	0.88	0.43
		Right Tilted	0.177	0.312	0.596	0.117	0.49	0.77	0.29
		Left Cheek	0.348	0.591	0.744	0.203	0.94	1.09	0.55
		Left Tilted	0.217	0.636	0.746	0.210	0.85	0.96	0.43
	GSM1900	Right Cheek	0.011	0.394	0.587	0.140	0.41	0.60	0.15
		Right Tilted	0.006	0.312	0.596	0.117	0.32	0.60	0.12
		Left Cheek	0.017	0.591	0.744	0.203	0.61	0.76	0.22
		Left Tilted	0.010	0.636	0.746	0.210	0.65	0.76	0.22
WCDMA	WCDMA II	Right Cheek	0.011	0.394	0.587	0.140	0.41	0.60	0.15
		Right Tilted	0.007	0.312	0.596	0.117	0.32	0.60	0.12
		Left Cheek	0.024	0.591	0.744	0.203	0.62	0.77	0.23
		Left Tilted	0.013	0.636	0.746	0.210	0.65	0.76	0.22
	WCDMA V	Right Cheek	0.177	0.394	0.587	0.140	0.57	0.76	0.32
		Right Tilted	0.099	0.312	0.596	0.117	0.41	0.70	0.22
		Left Cheek	0.159	0.591	0.744	0.203	0.75	0.90	0.36
		Left Tilted	0.099	0.636	0.746	0.210	0.74	0.85	0.31
LTE	LTE Band 2	Right Cheek	0.025	0.394	0.587	0.140	0.42	0.61	0.17
		Right Tilted	0.020	0.312	0.596	0.117	0.33	0.62	0.14
		Left Cheek	0.036	0.591	0.744	0.203	0.63	0.78	0.24
		Left Tilted	0.014	0.636	0.746	0.210	0.65	0.76	0.22
	LTE Band 5	Right Cheek	0.170	0.394	0.587	0.140	0.56	0.76	0.31
		Right Tilted	0.139	0.312	0.596	0.117	0.45	0.74	0.26
		Left Cheek	0.139	0.591	0.744	0.203	0.73	0.88	0.34
		Left Tilted	0.113	0.636	0.746	0.210	0.75	0.86	0.32
	LTE Band 7	Right Cheek	0.238	0.394	0.587	0.140	0.63	0.83	0.38
		Right Tilted	0.253	0.312	0.596	0.117	0.57	0.85	0.37
		Left Cheek	0.403	0.591	0.744	0.203	0.99	1.15	0.61
		Left Tilted	0.153	0.636	0.746	0.210	0.79	0.90	0.36
	LTE Band 41	Right Cheek	0.121	0.394	0.587	0.140	0.52	0.71	0.26
		Right Tilted	0.091	0.312	0.596	0.117	0.40	0.69	0.21
		Left Cheek	0.146	0.591	0.744	0.203	0.74	0.89	0.35
		Left Tilted	0.058	0.636	0.746	0.210	0.69	0.80	0.27



WWAN Band		Exposure Position	1	2	3	4	1+2 Summed 10g SAR (W/kg)	1+3 Summed 10g SAR (W/kg)	1+4 Summed 10g SAR (W/kg)
			WWAN	2.4GHz WLAN	5GHz WLAN	Bluetooth			
			10g SAR (W/kg)	10g SAR (W/kg)	10g SAR (W/kg)	10g SAR (W/kg)			
GSM	GSM850	Right Cheek	0.233	0.194	0.202	0.075	0.427	0.435	0.308
		Right Tilted	0.137	0.158	0.204	0.062	0.295	0.341	0.199
		Left Cheek	0.275	0.274	0.249	0.101	0.549	0.524	0.376
		Left Tilted	0.171	0.297	0.251	0.103	0.468	0.422	0.274
	GSM1900	Right Cheek	0.006	0.194	0.202	0.075	0.200	0.208	0.081
		Right Tilted	0.004	0.158	0.204	0.062	0.162	0.208	0.066
		Left Cheek	0.011	0.274	0.249	0.101	0.285	0.260	0.112
		Left Tilted	0.006	0.297	0.251	0.103	0.303	0.257	0.109
WCDMA	WCDMA II	Right Cheek	0.007	0.194	0.202	0.075	0.201	0.209	0.082
		Right Tilted	0.003	0.158	0.204	0.062	0.161	0.207	0.065
		Left Cheek	0.015	0.274	0.249	0.101	0.289	0.264	0.116
		Left Tilted	0.007	0.297	0.251	0.103	0.304	0.258	0.110
	WCDMA V	Right Cheek	0.136	0.194	0.202	0.075	0.330	0.338	0.211
		Right Tilted	0.078	0.158	0.204	0.062	0.236	0.282	0.140
		Left Cheek	0.127	0.274	0.249	0.101	0.401	0.376	0.228
		Left Tilted	0.078	0.297	0.251	0.103	0.375	0.329	0.181
LTE	LTE Band 2	Right Cheek	0.020	0.194	0.202	0.075	0.214	0.222	0.095
		Right Tilted	0.015	0.158	0.204	0.062	0.173	0.219	0.077
		Left Cheek	0.023	0.274	0.249	0.101	0.297	0.272	0.124
		Left Tilted	0.009	0.297	0.251	0.103	0.306	0.260	0.112
	LTE Band 5	Right Cheek	0.133	0.194	0.202	0.075	0.327	0.335	0.208
		Right Tilted	0.107	0.158	0.204	0.062	0.265	0.311	0.169
		Left Cheek	0.111	0.274	0.249	0.101	0.385	0.360	0.212
		Left Tilted	0.090	0.297	0.251	0.103	0.387	0.341	0.193
	LTE Band 7	Right Cheek	0.128	0.194	0.202	0.075	0.322	0.330	0.203
		Right Tilted	0.132	0.158	0.204	0.062	0.290	0.336	0.194
		Left Cheek	0.214	0.274	0.249	0.101	0.488	0.463	0.315
		Left Tilted	0.079	0.297	0.251	0.103	0.376	0.330	0.182
	LTE Band 41	Right Cheek	0.065	0.194	0.202	0.075	0.259	0.267	0.140
		Right Tilted	0.050	0.158	0.204	0.062	0.208	0.254	0.112
		Left Cheek	0.078	0.274	0.249	0.101	0.352	0.327	0.179
		Left Tilted	0.030	0.297	0.251	0.103	0.327	0.281	0.133



14.2 Hotspot Exposure Conditions

WWAN Band		Exposure Position	1	2	4	1+2 Summed 1g SAR (W/kg)	1+4 Summed 1g SAR (W/kg)
			WWAN	2.4GHz WLAN	Bluetooth		
			1g SAR (W/kg)	1g SAR (W/kg)	1g SAR (W/kg)		
GSM	GSM850	Front	0.337	0.088	0.013	0.43	0.35
		Back	0.571	0.125	0.024	0.70	0.60
		Left side	0.236			0.24	0.24
		Right side	0.424	0.044	0.011	0.47	0.44
		Top side		0.162	0.022	0.16	0.02
		Bottom side	0.208			0.21	0.21
	GSM1900	Front	0.318	0.088	0.013	0.41	0.33
		Back	0.491	0.125	0.024	0.62	0.52
		Left side	0.014			0.01	0.01
		Right side	0.015	0.044	0.011	0.06	0.03
		Top side		0.162	0.022	0.16	0.02
		Bottom side	0.963			0.96	0.96
WCDMA	WCDMA II	Front	0.414	0.088	0.013	0.50	0.43
		Back	0.685	0.125	0.024	0.81	0.71
		Left side	0.019			0.02	0.02
		Right side	0.022	0.044	0.011	0.07	0.03
		Top side		0.162	0.022	0.16	0.02
		Bottom side	0.993			0.99	0.99
	WCDMA V	Front	0.170	0.088	0.013	0.26	0.18
		Back	0.274	0.125	0.024	0.40	0.30
		Left side	0.129			0.13	0.13
		Right side	0.176	0.044	0.011	0.22	0.19
		Top side		0.162	0.022	0.16	0.02
		Bottom side	0.082			0.08	0.08
LTE	LTE Band 2	Front	0.485	0.088	0.013	0.57	0.50
		Back	0.739	0.125	0.024	0.86	0.76
		Left side	0.463			0.46	0.46
		Right side	0.022	0.044	0.011	0.07	0.03
		Top side		0.162	0.022	0.16	0.02
		Bottom side	0.951			0.95	0.95
	LTE Band 5	Front	0.162	0.088	0.013	0.25	0.18
		Back	0.248	0.125	0.024	0.37	0.27
		Left side	0.102			0.10	0.10
		Right side	0.174	0.044	0.011	0.22	0.19
		Top side		0.162	0.022	0.16	0.02
		Bottom side	0.080			0.08	0.08
	LTE Band 7	Front	0.542	0.088	0.013	0.63	0.56
		Back	0.776	0.125	0.024	0.90	0.80
		Left side	0.413			0.41	0.41
		Right side	0.093	0.044	0.011	0.14	0.10
		Top side		0.162	0.022	0.16	0.02
		Bottom side	0.391			0.39	0.39
	LTE Band 41	Front	0.201	0.088	0.013	0.29	0.21
		Back	0.301	0.125	0.024	0.43	0.33
		Left side	0.125			0.13	0.13
		Right side	0.103	0.044	0.011	0.15	0.11
		Top side		0.162	0.022	0.16	0.02
		Bottom side	0.132			0.13	0.13



WWAN Band		Exposure Position	1	2	4	1+2 Summed 10g SAR (W/kg)	1+4 Summed 10g SAR (W/kg)
			WWAN 10g SAR (W/kg)	2.4GHz WLAN 10g SAR (W/kg)	Bluetooth 10g SAR (W/kg)		
GSM	GSM850	Front	0.262	0.047	0.005	0.309	0.267
		Back	0.432	0.059	0.012	0.491	0.444
		Left side	0.165			0.165	0.165
		Right side	0.295	0.026	0.005	0.321	0.300
		Top side		0.082	0.010	0.082	0.010
		Bottom side	0.110			0.110	0.110
	GSM1900	Front	0.161	0.047	0.005	0.208	0.166
		Back	0.253	0.059	0.012	0.312	0.265
		Left side	0.010			0.010	0.010
		Right side	0.008	0.026	0.005	0.034	0.013
		Top side		0.082	0.010	0.082	0.010
		Bottom side	0.481			0.481	0.481
WCDMA	WCDMA II	Front	0.210	0.047	0.005	0.257	0.215
		Back	0.349	0.059	0.012	0.408	0.361
		Left side	0.011			0.011	0.011
		Right side	0.013	0.026	0.005	0.039	0.018
		Top side		0.082	0.010	0.082	0.010
		Bottom side	0.491			0.491	0.491
	WCDMA V	Front	0.133	0.047	0.005	0.180	0.138
		Back	0.208	0.059	0.012	0.267	0.220
		Left side	0.090			0.090	0.090
		Right side	0.122	0.026	0.005	0.148	0.127
		Top side		0.082	0.010	0.082	0.010
		Bottom side	0.044			0.044	0.044
LTE	LTE Band 2	Front	0.245	0.047	0.005	0.292	0.250
		Back	0.339	0.059	0.012	0.398	0.351
		Left side	0.234			0.234	0.234
		Right side	0.014	0.026	0.005	0.040	0.019
		Top side		0.082	0.010	0.082	0.010
		Bottom side	0.477			0.477	0.477
	LTE Band 5	Front	0.126	0.047	0.005	0.173	0.131
		Back	0.189	0.059	0.012	0.248	0.201
		Left side	0.071			0.071	0.071
		Right side	0.121	0.026	0.005	0.147	0.126
		Top side		0.082	0.010	0.082	0.010
		Bottom side	0.043			0.043	0.043
	LTE Band 7	Front	0.279	0.047	0.005	0.326	0.284
		Back	0.359	0.059	0.012	0.418	0.371
		Left side	0.206			0.206	0.206
		Right side	0.043	0.026	0.005	0.069	0.048
		Top side		0.082	0.010	0.082	0.010
		Bottom side	0.210			0.210	0.210
	LTE Band 41	Front	0.102	0.047	0.005	0.149	0.107
		Back	0.138	0.059	0.012	0.197	0.150
		Left side	0.062			0.062	0.062
		Right side	0.047	0.026	0.005	0.073	0.052
		Top side		0.082	0.010	0.082	0.010
		Bottom side	0.069			0.069	0.069



14.3 Body-Worn Accessory Exposure Conditions

WWAN Band		Exposure Position	1	2	3	4	1+2 Summed 1g SAR (W/kg)	1+3 Summed 1g SAR (W/kg)	1+4 Summed 1g SAR (W/kg)
			WWAN 1g SAR (W/kg)	2.4GHz WLAN 1g SAR (W/kg)	5GHz WLAN 1g SAR (W/kg)	Bluetooth 1g SAR (W/kg)			
GSM	GSM850	Front	0.308	0.054	0.090	0.006	0.36	0.40	0.31
		Back	0.497	0.060	0.046	0.008	0.56	0.54	0.51
	GSM1900	Front	0.215	0.054	0.090	0.006	0.27	0.31	0.22
		Back	0.307	0.060	0.046	0.008	0.37	0.35	0.32
WCDMA	WCDMA II	Front	0.436	0.054	0.090	0.006	0.49	0.53	0.44
		Back	0.690	0.060	0.046	0.008	0.75	0.74	0.70
	WCDMA V	Front	0.160	0.054	0.090	0.006	0.21	0.25	0.17
		Back	0.231	0.060	0.046	0.008	0.29	0.28	0.24
LTE	LTE Band 2	Front	0.255	0.054	0.090	0.006	0.31	0.35	0.26
		Back	0.389	0.060	0.046	0.008	0.45	0.44	0.40
	LTE Band 5	Front	0.151	0.054	0.090	0.006	0.21	0.24	0.16
		Back	0.211	0.060	0.046	0.008	0.27	0.26	0.22
	LTE Band 7	Front	0.320	0.054	0.090	0.006	0.37	0.41	0.33
		Back	0.302	0.060	0.046	0.008	0.36	0.35	0.31
	LTE Band 41	Front	0.122	0.054	0.090	0.006	0.18	0.21	0.13
		Back	0.123	0.060	0.046	0.008	0.18	0.17	0.13

WWAN Band		Exposure Position	1	2	3	4	1+2 Summed 10g SAR (W/kg)	1+3 Summed 10g SAR (W/kg)	1+4 Summed 10g SAR (W/kg)
			WWAN 10g SAR (W/kg)	2.4GHz WLAN 10g SAR (W/kg)	5GHz WLAN 10g SAR (W/kg)	Bluetooth 10g SAR (W/kg)			
GSM	GSM850	Front	0.238	0.030	0.035	0.002	0.268	0.273	0.240
		Back	0.376	0.033	0.018	0.003	0.409	0.394	0.379
	GSM1900	Front	0.118	0.030	0.035	0.002	0.148	0.153	0.120
		Back	0.172	0.033	0.018	0.003	0.205	0.190	0.175
WCDMA	WCDMA II	Front	0.239	0.030	0.035	0.002	0.269	0.274	0.241
		Back	0.378	0.033	0.018	0.003	0.411	0.396	0.381
	WCDMA V	Front	0.123	0.030	0.035	0.002	0.153	0.158	0.125
		Back	0.174	0.033	0.018	0.003	0.207	0.192	0.177
LTE	LTE Band 2	Front	0.142	0.030	0.035	0.002	0.172	0.177	0.144
		Back	0.217	0.033	0.018	0.003	0.250	0.235	0.220
	LTE Band 5	Front	0.117	0.030	0.035	0.002	0.147	0.152	0.119
		Back	0.160	0.033	0.018	0.003	0.193	0.178	0.163
	LTE Band 7	Front	0.183	0.030	0.035	0.002	0.213	0.218	0.185
		Back	0.150	0.033	0.018	0.003	0.183	0.168	0.153
	LTE Band 41	Front	0.057	0.030	0.035	0.002	0.087	0.092	0.059
		Back	0.060	0.033	0.018	0.003	0.093	0.078	0.063

14.4 Product Specific Exposure Conditions

WWAN Band		Exposure Position	1	2	3	4	1+2 Summed 10g SAR (W/kg)	1+3 Summed 10g SAR (W/kg)	1+4 Summed 10g SAR (W/kg)
			WWAN 10g SAR (W/kg)	2.4GHz WLAN 10g SAR (W/kg)	5GHz WLAN 10g SAR (W/kg)	Bluetooth 10g SAR (W/kg)			
GSM	GSM1900	Front	1.864	-	0.545	-	1.86	2.41	1.86
		Back	2.202	-	0.349	-	2.20	2.55	2.20
		Left side	-	-	-	-	-	-	-
		Right side	-	-	0.036	-	-	0.04	-
		Top side	-	-	0.300	-	-	0.30	-
		Bottom side	1.393	-	-	-	-	1.39	1.39
WCDMA	WCDMA II	Front	3.158	-	0.545	-	3.16	3.70	3.16
		Back	2.841	-	0.349	-	2.84	3.19	2.84
		Left side	-	-	-	-	-	-	-
		Right side	-	-	0.036	-	-	0.04	-
		Top side	-	-	0.300	-	-	0.30	-
		Bottom side	0.966	-	-	-	-	0.97	0.97
LTE	LTE Band 2	Front	3.173	-	0.545	-	3.17	3.72	3.17
		Back	3.191	-	0.349	-	3.19	3.54	3.19
		Left side	-	-	-	-	-	-	-
		Right side	-	-	0.036	-	-	0.04	-
		Top side	-	-	0.300	-	-	0.30	-
		Bottom side	1.242	-	-	-	-	1.24	1.24

Remark:

1. According to KDB 648474 D04v01r03, for WWAN / 2.4GHz WLAN / Bluetooth SAR ("-") was excluded, due to Hotspot SAR was < 1.2W/kg.
2. According to KDB 941225 D06 v02r01, for 5GHz WLAN SAR ("-") was excluded, due to transmitting antenna located larger 25mm from that surface or edge

Test Engineer : Neil Hsiang Randy Lin Andy Jiang Willy Yu Ted Hsieh Jay Jian Thomas Wang White Huang Wilson Lin and Carter Chuang



15. Uncertainty Assessment

Per KDB 865664 D01 SAR measurement 100MHz to 6GHz, when the highest measured 1-g SAR within a frequency band is < 1.5 W/kg and the measured 10-g SAR within a frequency band is < 3.75 W/kg. The expanded SAR measurement uncertainty must be $\leq 30\%$, for a confidence interval of $k = 2$. If these conditions are met, extensive SAR measurement uncertainty analysis described in IEEE Std 1528-2013 is not required in SAR reports submitted for equipment approval. For this device, the highest measured 1-g SAR is less 1.5W/kg and highest measured 10-g SAR is less 3.75W/kg. Therefore, the measurement uncertainty table is not required in this report.

16. References

- [1] FCC 47 CFR Part 2 "Frequency Allocations and Radio Treaty Matters; General Rules and Regulations"
- [2] ANSI/IEEE Std. C95.1-1992, "IEEE Standard for Safety Levels with Respect to Human Exposure to Radio Frequency Electromagnetic Fields, 3 kHz to 300 GHz", September 1992
- [3] IEEE Std. 1528-2013, "IEEE Recommended Practice for Determining the Peak Spatial-Average Specific Absorption Rate (SAR) in the Human Head from Wireless Communications Devices: Measurement Techniques", Sep 2013
- [4] SPEAG DASY System Handbook
- [5] FCC KDB 248227 D01 v02r02, "SAR Guidance for IEEE 802.11 (WiFi) Transmitters", Oct 2015.
- [6] FCC KDB 447498 D01 v06, "Mobile and Portable Device RF Exposure Procedures and Equipment Authorization Policies", Oct 2015
- [7] FCC KDB 648474 D04 v01r03, "SAR Evaluation Considerations for Wireless Handsets", Oct 2015.
- [8] FCC KDB 941225 D01 v03r01, "3G SAR MEAUREMENT PROCEDURES", Oct 2015
- [9] FCC KDB 941225 D05 v02r05, "SAR Evaluation Considerations for LTE Devices", Dec 2015
- [10] FCC KDB 941225 D05A v01r02, "Rel. 10 LTE SAR Test Guidance and KDB Inquiries", Oct 2015
- [11] FCC KDB 941225 D06 v02r01, "SAR Evaluation Procedures for Portable Devices with Wireless Router Capabilities", Oct 2015.
- [12] FCC KDB 865664 D01 v01r04, "SAR Measurement Requirements for 100 MHz to 6 GHz", Aug 2015.
- [13] FCC KDB 865664 D02 v01r02, "RF Exposure Compliance Reporting and Documentation Considerations" Oct 2015.