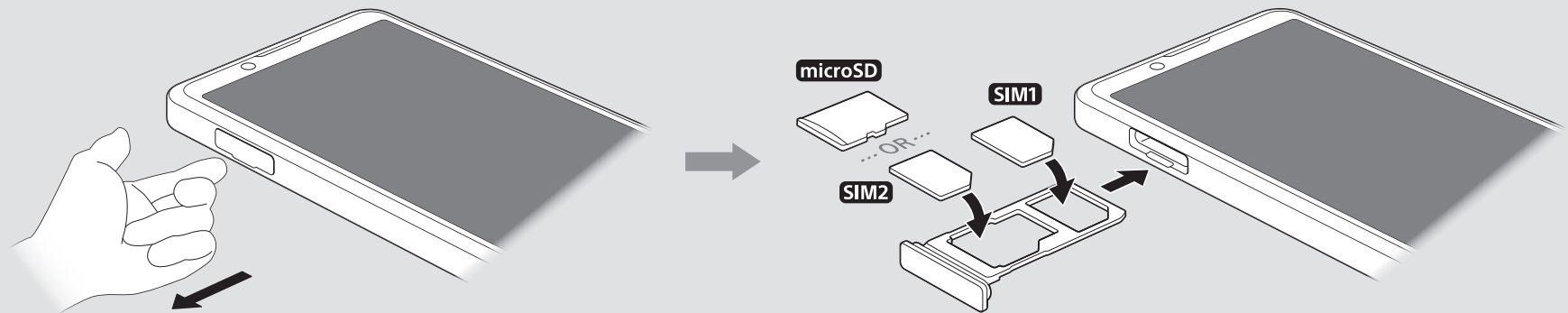


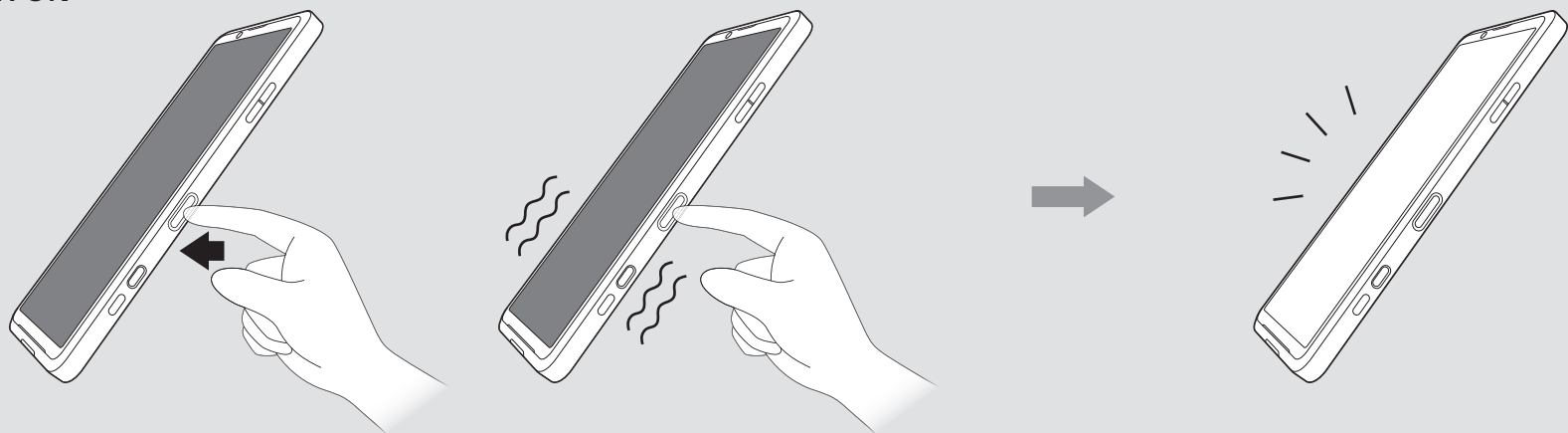
XPERIA PRO

SONY

# 1 SIM

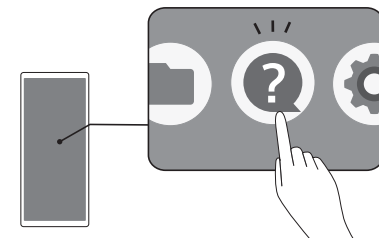
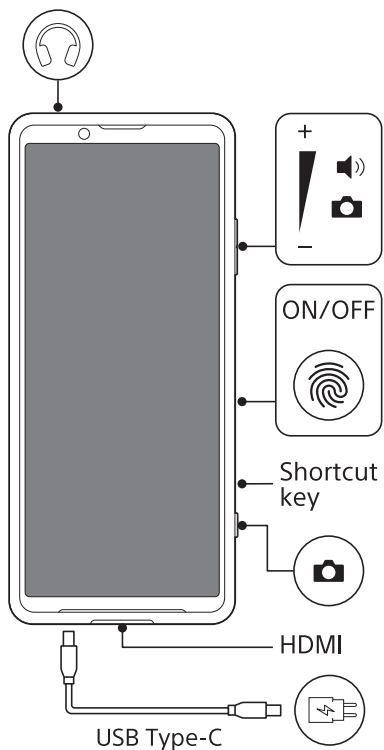


# 2 PWR ON



## Startup guide

- Ръководство „Бърз старт“
- Úvodní příručka
- Kurzanleitung
- Installationsvejledning
- Alustusjuhend
- Guia de inicio
- Aloitusopas
- Guide de démarrage
- Οδηγός εκκίνησης
- Priručnik
- Használatbavételi útmutató
- Ræsihandbók
- Guida introduttiva
- Paleisties vadovas
- Sākšanas ceļvedis
- Opstartgids
- Oppstartsveiviser
- Instrukcja obsługi
- Manual de Iniciação
- Ghid de pornire
- Starthandbok
- Vodič za začetek uporabe
- Úvodná príručka
- Руководство по запуску
- Посібник з запуску
- Бастапқы нұсқаулық
- คู่มือเริ่มต้นการใช้งาน
- 用戶指南



OR



XQ-AQ62



Printed in XXX (Printers logotype)

<https://rd1.sony.net/help/mobile/xperia-pro/en/>

**Supported frequency bands**

XQ-AQ62  
5G NR (Bands n2, n5, n66, n260, n261), LTE (Bands 1, 2, 3, 4, 5, 7, 8, 11, 12, 13, 17, 18, 19, 20, 21, 25, 26, 28, 29, 32, 34, 38, 39, 40, 41, 42, 46, 48, 66), UMTS  
HSPA+ (Bands 1, 2, 4, 5, 6, 8, 19), GSM GPRS/EDGE (Bands 850, 900, 1800, 1900), Bluetooth (2.4GHz), WLAN (2.4GHz/5GHz), NFC (13.56MHz)  
Some frequency bands might be turned off in certain markets or by certain operators.

You can find your model number under Settings > About phone.

**FCC Statement**

This device complies with Part 15 of the FCC rules. Operation is subject to the following two conditions: (1) This device may not cause harmful interference, and (2) This device must accept any interference received, including interference that may cause undesired operation.

For additional information, please read the FCC Statement provided under Settings > About phone > Legal information > Important information > Statements on your device.

For question regarding your product or for the Sony Service Center nearest you, call 1-800-222-7669 (SONY).

Supplier's Declaration of Conformity

Trade Name : SONY

Model : XQ-AQ62

Responsible Party : Sony Electronics Inc.

Address : 16535 Via Esprillo, San Diego, CA 92127 U.S.A.

Telephone Number : 858-942-2230

**High-temperature warning**

High-temperature warning

This mark is displayed when the surface temperature of the product rises during use. When the mark is displayed, there is a risk of burns if you continue using the product while holding it in your hands. In this case, please refrain from holding it in your hands.

**Loudness warning**

Loudness warning

To prevent possible hearing damage, do not listen at high volume levels for long periods.

**Instructions to prevent reasonably foreseeable mishandling of the battery**

This product has a built-in lithium ion battery. Do not disassemble or alter the product. Do not expose this product, including the battery, to excessive heat, fire, etc., for an extended period of time. Do not subject this product, including the battery, to extreme low-temperature conditions that may result in overheating and thermal runaway. The battery must be charged before use. Always use the correct charger and refer to the manufacturer's instructions or equipment manual for proper charging instructions. After extended periods of storage, it may be necessary to charge and discharge the battery several times to obtain maximum performance.

**Legal information**

This Startup guide is published by Sony Mobile Communications Inc. or its local affiliated company, without any warranty. Improvements and changes to this Startup guide necessitated by typographical errors, inaccuracies of current information, or improvements to programs and/or equipment, may be made by Sony Mobile Communications Inc. at any time and without notice. Such changes will, however, be incorporated into new editions of this Startup guide. All illustrations are for illustration only and may not accurately depict the actual device.

All product and company names mentioned herein are the trademarks or registered trademarks of their respective owners. Any rights not expressly granted herein are reserved. Visit

<https://www.sonymobile.com/global-en/legal/> for more information.

**To view the regulatory compliance mark**

- Find and tap Settings > About phone > Certificates.
  - A regulatory compliance mark such as an FCC ID is displayed on the screen.

**Warranty, SAR and usage guidelines**

For information about warranty, SAR (Specific Absorption Rate) and safety guidelines, please read the Important information provided under Settings > About phone > Legal information on your device.

**For customers in the United States****Owner's record**

The model and IMEI numbers are located on the box of the unit. Record the IMEI number in the space provided below. Refer to them whenever you call upon Sony Customer Support regarding this product.

Model No. \_\_\_\_\_

IMEI No. \_\_\_\_\_

**RECYCLING RECHARGEABLE BATTERIES**

Rechargeable batteries are recyclable.

You can help preserve our environment by returning your used rechargeable batteries to the collection and recycling location nearest you.

For more information regarding recycling of rechargeable batteries, visit [www.sony.com/electronics/eco/environmental-management](http://www.sony.com/electronics/eco/environmental-management)

Caution: Do not handle damaged or leaking rechargeable batteries.

**Class I Laser Product**

Complies with 21 CFR 1040.10 and 1040.11 except for deviations pursuant to Laser Notice No. 50, dated June 24, 2007.

factory ID: STTB

©2020 Sony Mobile Communications Inc.