

APPENDIX A: POWER DENSITY TEST PLOTS

PCTEST

Date: 08/05/2020

Antenna 0 Beam 31; V; Low Ch.; CW

Device Under Test Properties

DUT	Serial Number	DUT Type
PY7-57441Y	QV7100BX49	Portable Handset

Exposure Conditions

Phantom Section	Position	Test Distance [mm]	Band	Frequency [MHz]
5G	LEFT	2.00	n261	27550.00

Hardware Setup

Probe, Calibration Date	DAE, Calibration Date
EUMmWV3 - SN9415, 02/14/2020	DAE4 SN1415, 03/12/2020

Software Setup

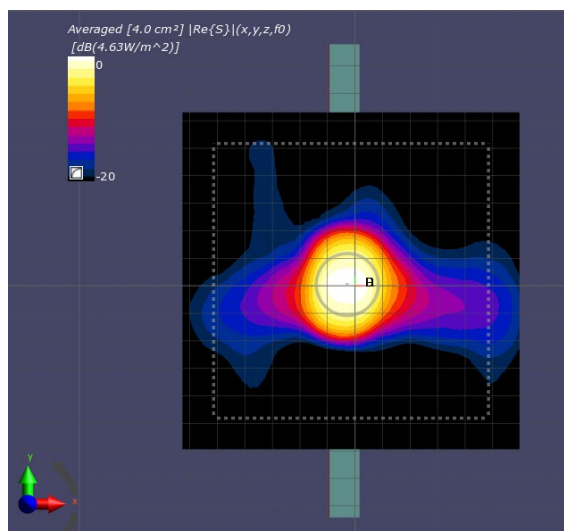
Software	Software Version
cDASY6 Module mmWave	2.0.2.34

Scans Setup

Scan Type	5G Scan
Grid Extents [mm]	120x120
Grid Steps [lambda]	0.25 x 0.25
Sensor Surface [mm]	2.0

Measurement Results

Scan Type	5G Scan
Avg. Area [cm ²]	4.00
pS _{tot} avg [W/m ²]	4.63
pS _n avg [W/m ²]	3.97
E _{peak} [V/m]	70.0
Power Drift [dB]	-0.04



PCTEST

Date: 08/07/2020

Antenna 1 Beam 46; V; Low Ch.; CW

Device Under Test Properties

DUT	Serial Number	DUT Type
PY7-57441Y	QV7100BX49	Portable Handset

Exposure Conditions

Phantom Section	Position	Test Distance [mm]	Band	Frequency [MHz]
5G	RIGHT	2.00	n261	27550.00

Hardware Setup

Probe, Calibration Date	DAE, Calibration Date
EUMmWV3 - SN9415, 02/14/2020	DAE4 SN1415, 03/12/2020

Software Setup

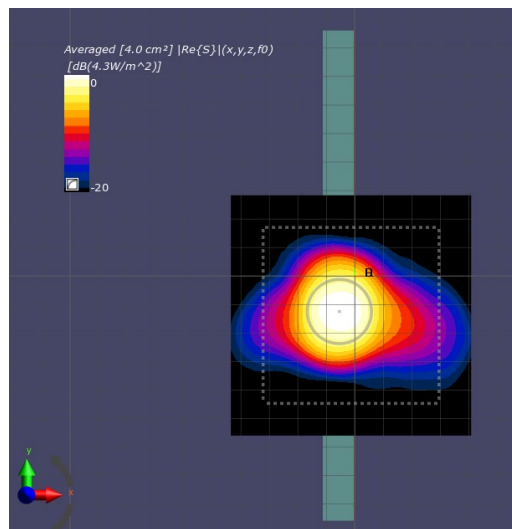
Software	Software Version
cDASY6 Module mmWave	2.0.2.34

Scans Setup

Scan Type	5G Scan
Grid Extents [mm]	80x80
Grid Steps [lambda]	0.25 x 0.25
Sensor Surface [mm]	2.0

Measurement Results

Scan Type	5G Scan
Avg. Area [cm ²]	4.00
pS _{tot} avg [W/m ²]	4.30
pS _n avg [W/m ²]	3.66
E _{peak} [V/m]	65.0
Power Drift [dB]	-0.20



PCTEST

Date: 08/10/2020

Antenna 2 Beam 41; V; Low Ch.; CW

Device Under Test Properties

DUT	Serial Number	DUT Type
PY7-57441Y	QV7100BX49	Portable Handset

Exposure Conditions

Phantom Section	Position	Test Distance [mm]	Band	Frequency [MHz]
5G	TOP	2.00	n261	27550.00

Hardware Setup

Probe, Calibration Date	DAE, Calibration Date
EUmmWV3 - SN9415, 02/14/2020	DAE4 SN1415, 03/12/2020

Software Setup

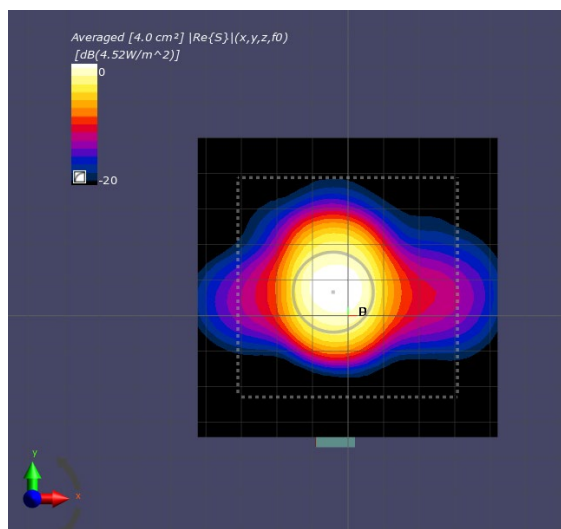
Software	Software Version
cDASY6 Module mmWave	2.0.2.34

Scans Setup

Scan Type	5G Scan
Grid Extents [mm]	80x80
Grid Steps [lambda]	0.25 x 0.25
Sensor Surface [mm]	2.0

Measurement Results

Scan Type	5G Scan
Avg. Area [cm ²]	4.00
pS _{tot} avg [W/m ²]	4.52
pS _n avg [W/m ²]	3.77
E _{peak} [V/m]	68.9
Power Drift [dB]	-0.14



PCTEST

Date: 08/12/2020

Antenna 3 Beam 35; V; Low Ch.; CW

Device Under Test Properties

DUT	Serial Number	DUT Type
PY7-57441Y	QV7100BX49	Portable Handset

Exposure Conditions

Phantom Section	Position	Test Distance [mm]	Band	Frequency [MHz]
5G	BOTTOM	2.00	n261	27550.00

Hardware Setup

Probe, Calibration Date	DAE, Calibration Date
EUMmWV3 - SN9415, 02/14/2020	DAE4 SN1415, 03/12/2020

Software Setup

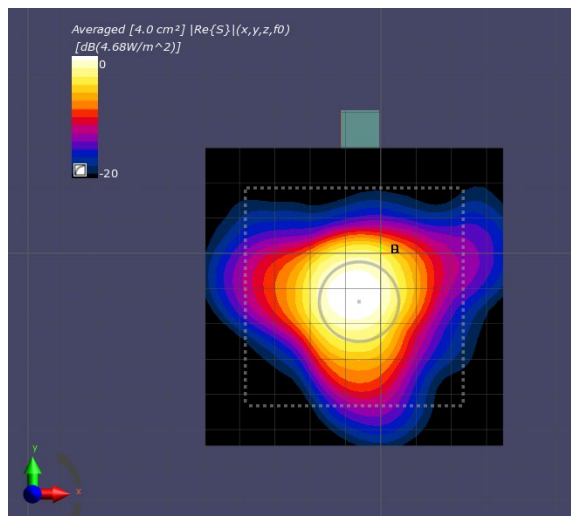
Software	Software Version
cDASY6 Module mmWave	2.0.2.34

Scans Setup

Scan Type	5G Scan
Grid Extents [mm]	80x80
Grid Steps [lambda]	0.25 x 0.25
Sensor Surface [mm]	2.0

Measurement Results

Scan Type	5G Scan
Avg. Area [cm ²]	4.00
pS _{tot} avg [W/m ²]	4.68
pS _n avg [W/m ²]	3.76
E _{peak} [V/m]	87.5
Power Drift [dB]	-0.03



PCTEST

Date: 08/07/2020

Antenna 0 Beam 158; H; Mid Ch.; CW

Device Under Test Properties

DUT	Serial Number	DUT Type
PY7-57441Y	QV7100BX49	Portable Handset

Exposure Conditions

Phantom Section	Position	Test Distance [mm]	Band	Frequency [MHz]
5G	LEFT	2.00	n260	38500.00

Hardware Setup

Probe, Calibration Date	DAE, Calibration Date
EUmmWV3 - SN9415, 02/14/2020	DAE4 SN1415, 03/12/2020

Software Setup

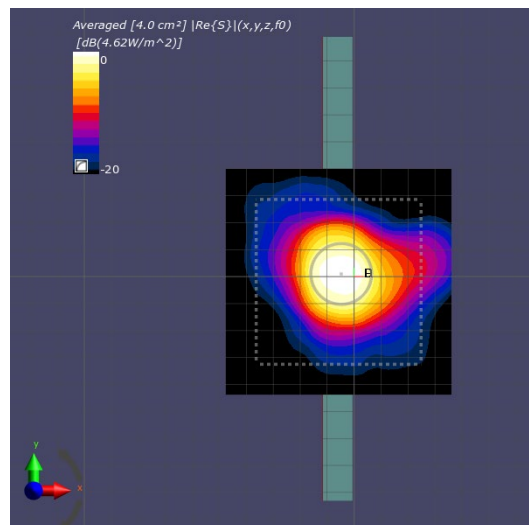
Software	Software Version
cDASY6 Module mmWave	2.0.2.34

Scans Setup

Scan Type	5G Scan
Grid Extents [mm]	80x80
Grid Steps [lambda]	0.25 x 0.25
Sensor Surface [mm]	2.0

Measurement Results

Scan Type	5G Scan
Avg. Area [cm ²]	4.00
pS _{tot} avg [W/m ²]	4.62
pS _n avg [W/m ²]	3.70
E _{peak} [V/m]	88.2
Power Drift [dB]	-0.05



PCTEST

Date: 08/10/2020

Antenna 1 Beam 26; V; Mid Ch.; CW

Device Under Test Properties

DUT	Serial Number	DUT Type
PY7-57441Y	QV7100BX49	Portable Handset

Exposure Conditions

Phantom Section	Position	Test Distance [mm]	Band	Frequency [MHz]
5G	RIGHT	2.00	n260	38500.00

Hardware Setup

Probe, Calibration Date	DAE, Calibration Date
EUMmWV3 - SN9415, 02/14/2020	DAE4 SN1415, 03/12/2020

Software Setup

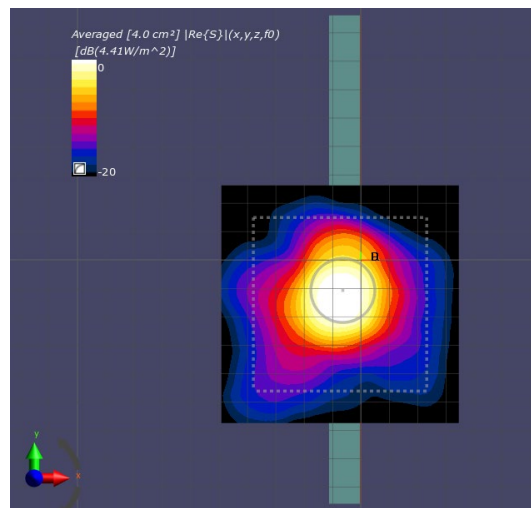
Software	Software Version
cDASY6 Module mmWave	2.0.2.34

Scans Setup

Scan Type	5G Scan
Grid Extents [mm]	80x80
Grid Steps [lambda]	0.25 x 0.25
Sensor Surface [mm]	2.0

Measurement Results

Scan Type	5G Scan
Avg. Area [cm ²]	4.00
pS _{tot} avg [W/m ²]	4.41
pS _n avg [W/m ²]	3.60
E _{peak} [V/m]	93.2
Power Drift [dB]	0.01



PCTEST

Date: 08/11/2020

Antenna 2 Beam 168; H; High Ch.; CW

Device Under Test Properties

DUT	Serial Number	DUT Type
PY7-57441Y	QV7100BX49	Portable Handset

Exposure Conditions

Phantom Section	Position	Test Distance [mm]	Band	Frequency [MHz]
5G	TOP	2.00	n260	39949.00

Hardware Setup

Probe, Calibration Date	DAE, Calibration Date
EUmmWV3 - SN9415, 02/14/2020	DAE4 SN1415, 03/12/2020

Software Setup

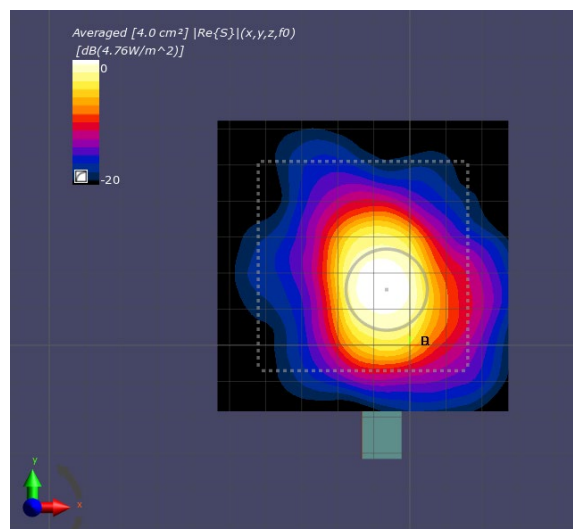
Software	Software Version
cDASY6 Module mmWave	2.0.2.34

Scans Setup

Scan Type	5G Scan
Grid Extents [mm]	80x80
Grid Steps [lambda]	0.25 x 0.25
Sensor Surface [mm]	2.0

Measurement Results

Scan Type	5G Scan
Avg. Area [cm ²]	4.00
pS _{tot} avg [W/m ²]	4.76
pS _n avg [W/m ²]	3.99
E _{peak} [V/m]	83.8
Power Drift [dB]	-0.16



PCTEST

Date: 08/12/2020

Antenna 3 Beam 35; V; Low Ch.; CW

Device Under Test Properties

DUT	Serial Number	DUT Type
PY7-57441Y	QV7100BX49	Portable Handset

Exposure Conditions

Phantom Section	Position	Test Distance [mm]	Band	Frequency [MHz]
5G	BOTTOM	2.00	n260	37050.00

Hardware Setup

Probe, Calibration Date	DAE, Calibration Date
EUmmWV3 - SN9415, 02/14/2020	DAE4 SN1415, 03/12/2020

Software Setup

Software	Software Version
cDASY6 Module mmWave	2.0.2.34

Scans Setup

Scan Type	5G Scan
Grid Extents [mm]	80x80
Grid Steps [lambda]	0.25 x 0.25
Sensor Surface [mm]	2.0

Measurement Results

Scan Type	5G Scan
Avg. Area [cm ²]	4.00
pS _{tot} avg [W/m ²]	3.77
pS _n avg [W/m ²]	3.14
E _{peak} [V/m]	69.4
Power Drift [dB]	0.00

