

Measurement Report for WLAN 2.4GHz, EDGE LEFT, Simul, WiFi Chain 0

Exposure Conditions

Band	WLAN 2.4GHz	TSL Permittivity	38.8
Frequency [MHz] Channel Number	2437.000 6	TSL Conductivity [S/m]	1.82
Group UID	WLAN 10415-AAA	Phantom Section TSL	Flat HSL
Conversion Factor	7.66	Test Distance [mm]	10.00
Communication Configuration	IEEE 802.11b WiFi 2.4 GHz (DSSS, 1 Mbps, 99pc duty cycle)		

Hardware Setup

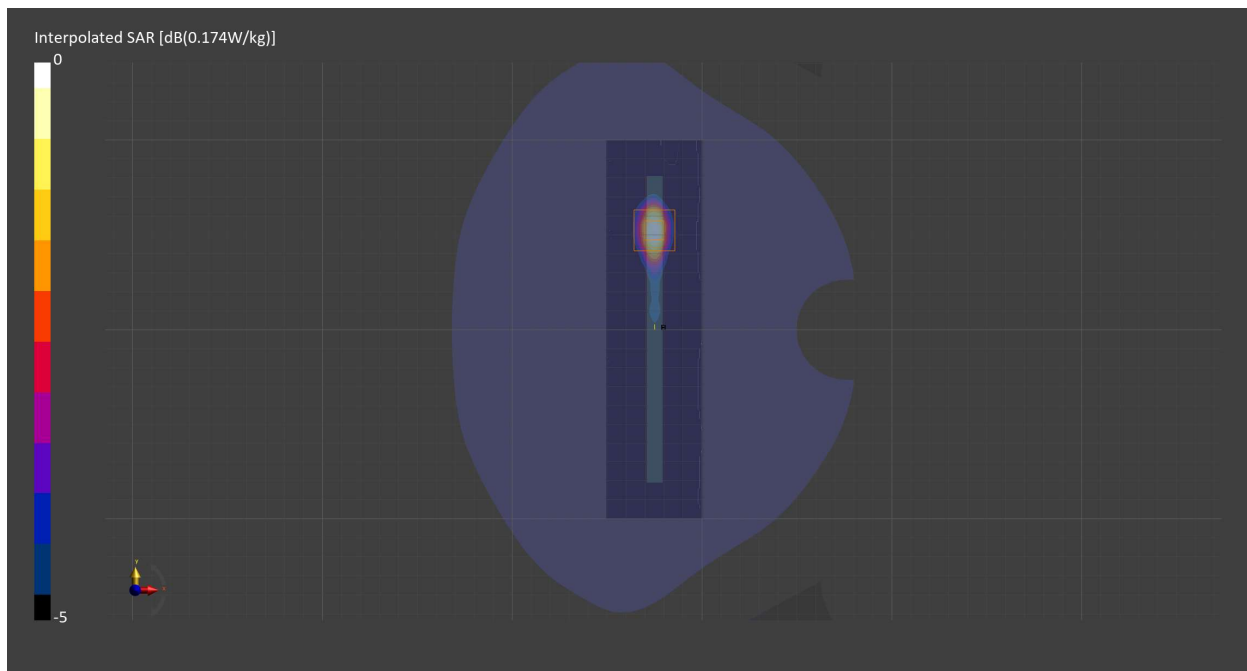
Probe Calibration Date	EX3DV4 - SN7709 2023-11-30	Phantom	Twin-SAM V8.0 (30deg probe tilt) - SN1742
DAE Calibration Date	DAE4 Sn1714 2023-11-22	TSL Meas. Date	HBBL-600-10000 2024-Feb-19

Scans Setup

	Area Scan	Zoom Scan
Grid Extents [mm]	51.0 x 200.0	30.0 x 30.0 x 30.0
Grid Steps [mm]	8.5 x 10.0	5.0 x 5.0 x 1.5
Sensor Surface [mm]	3.0	1.4
Graded Grid	N/A	Yes
M2/M1 [%]		80.7
Dist 3dB Peak [mm]		8.6

Measurement Results

	Area Scan	Zoom Scan
psSAR1g [W/Kg]	0.088	0.088
psSAR10g [W/Kg]	0.039	0.039
Power Drift [dB]	N/A	0.08



Measurement Report for WLAN 2.4GHz, CHEEK, Normal, WiFi Main Chain 1

Exposure Conditions

Band	WLAN 2.4GHz	TSL Permittivity	38.8
Frequency [MHz] Channel Number	2437.000 6	TSL Conductivity [S/m]	1.82
Group UID	WLAN 10012-CAB	Phantom Section TSL	LeftHead HSL
Conversion Factor	7.66	Test Distance [mm]	0.00
Communication Configuration	IEEE 802.11b WiFi 2.4 GHz (DSSS, 1 Mbps)		

Hardware Setup

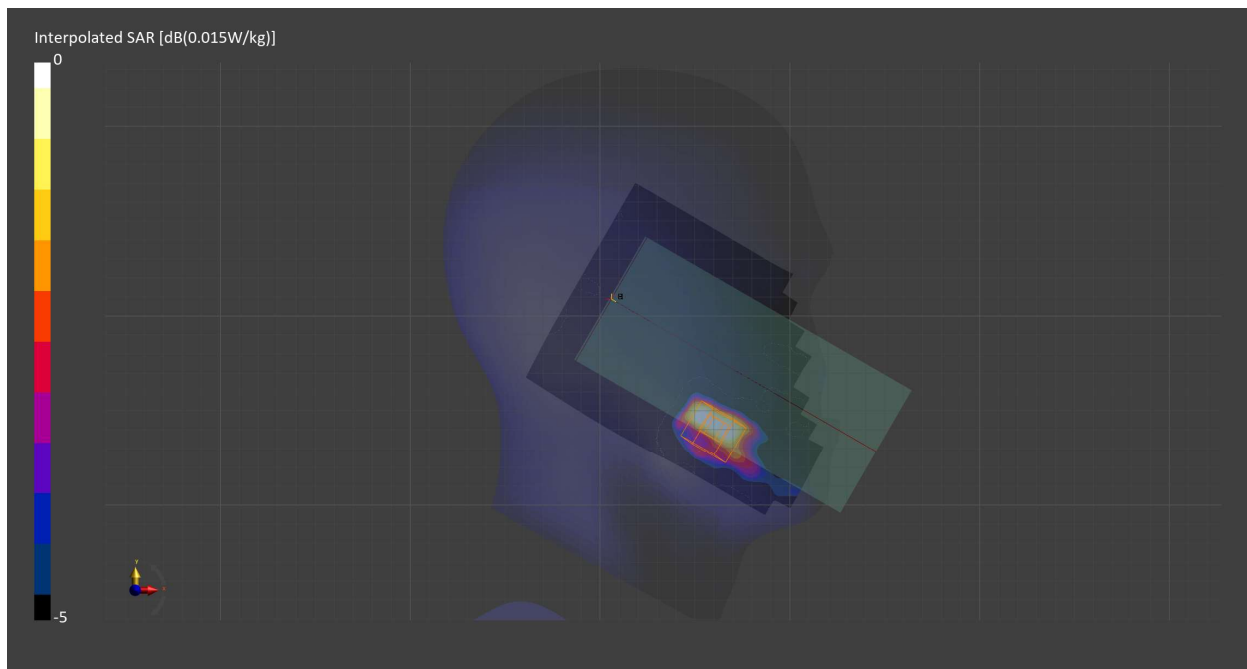
Probe Calibration Date	EX3DV4 - SN7709 2023-11-30	Phantom	Twin-SAM V8.0 (30deg probe tilt) - SN1742
DAE Calibration Date	DAE4 Sn1714 2023-11-22	TSL Meas. Date	HBBL-600-10000 2024-Feb-19

Scans Setup

	Area Scan	Zoom Scan
Grid Extents [mm]	120.0 x 200.0	30.0 x 30.0 x 30.0
Grid Steps [mm]	10.0 x 10.0	5.0 x 5.0 x 1.5
Sensor Surface [mm]	3.0	1.4
Graded Grid	N/A	Yes
M2/M1 [%]		98.4
Dist 3dB Peak [mm]		2.1

Measurement Results

	Area Scan	Zoom Scan
psSAR1g [W/Kg]	0.005	0.003
psSAR10g [W/Kg]	0.002	0.001
Power Drift [dB]	N/A	4.95



Measurement Report for WLAN 2.4GHz, BACK, Normal, WiFi Main Chain 1

Exposure Conditions

Band	WLAN 2.4GHz	TSL Permittivity	38.8
Frequency [MHz] Channel Number	2437.000 6	TSL Conductivity [S/m]	1.82
Group UID	WLAN 10012-CAB	Phantom Section TSL	Flat HSL
Conversion Factor	7.66	Test Distance [mm]	10.00
Communication Configuration	IEEE 802.11b WiFi 2.4 GHz (DSSS, 1 Mbps)		

Hardware Setup

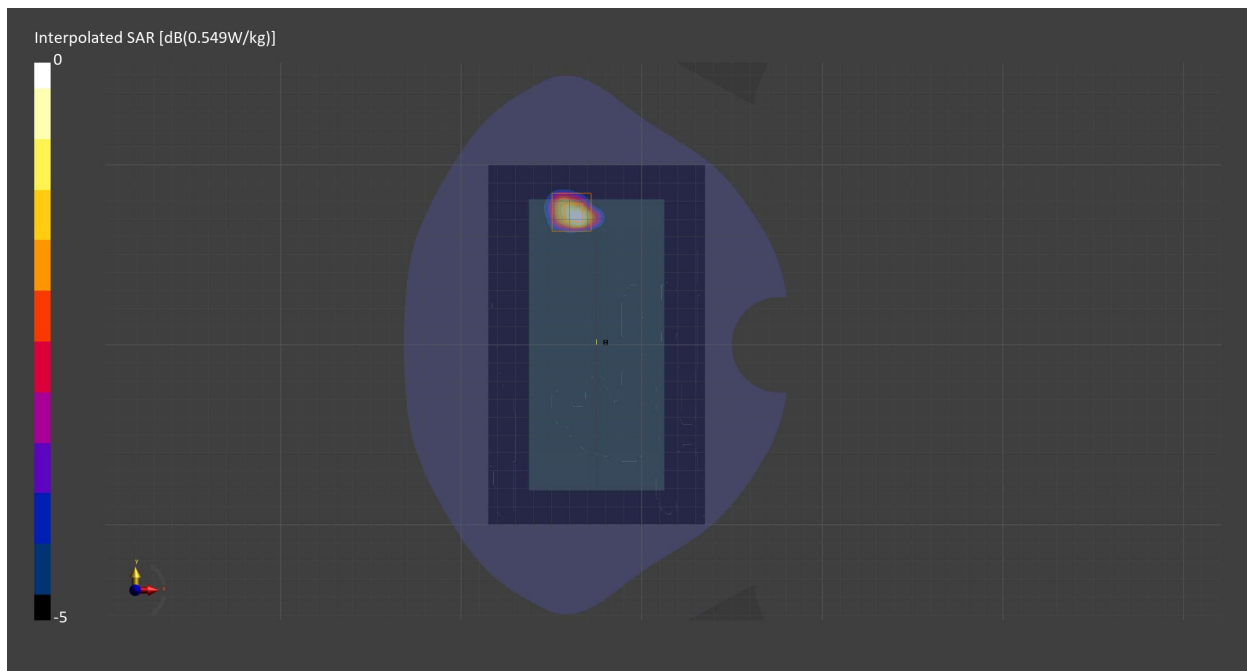
Probe Calibration Date	EX3DV4 - SN7709 2023-11-30	Phantom	Twin-SAM V8.0 (30deg probe tilt) - SN1742
DAE Calibration Date	DAE4 Sn1714 2023-11-22	TSL Meas. Date	HBBL-600-10000 2024-Feb-19

Scans Setup

	Area Scan	Zoom Scan
Grid Extents [mm]	120.0 x 200.0	30.0 x 30.0 x 30.0
Grid Steps [mm]	10.0 x 10.0	5.0 x 5.0 x 1.5
Sensor Surface [mm]	3.0	1.4
Graded Grid	N/A	Yes
M2/M1 [%]		76.9
Dist 3dB Peak [mm]		8.0

Measurement Results

	Area Scan	Zoom Scan
psSAR1g [W/Kg]	0.242	0.245
psSAR10g [W/Kg]	0.109	0.108
Power Drift [dB]	N/A	-0.01



Measurement Report for WLAN 2.4GHz, BACK, Simul, WiFi Main Chain 1

Exposure Conditions

Band	WLAN 2.4GHz	TSL Permittivity	38.8
Frequency [MHz] Channel Number	2437.000 6	TSL Conductivity [S/m]	1.82
Group UID	WLAN 10012-CAB	Phantom Section TSL	Flat HSL
Conversion Factor	7.66	Test Distance [mm]	10.00
Communication Configuration	IEEE 802.11b WiFi 2.4 GHz (DSSS, 1 Mbps)		

Hardware Setup

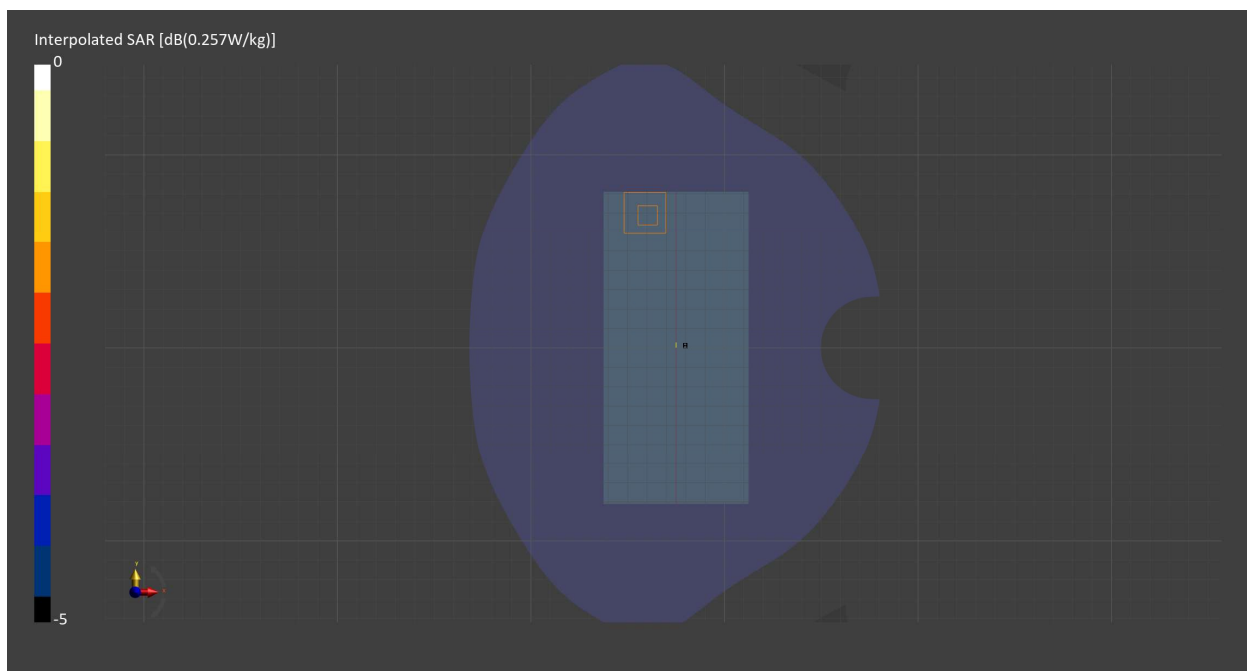
Probe Calibration Date	EX3DV4 - SN7709 2023-11-30	Phantom	Twin-SAM V8.0 (30deg probe tilt) - SN1742
DAE Calibration Date	DAE4 Sn1714 2023-11-22	TSL Meas. Date	HBBL-600-10000 2024-Feb-19

Scans Setup

	Area Scan	Zoom Scan
Grid Extents [mm]	120.0 x 200.0	30.0 x 30.0 x 30.0
Grid Steps [mm]	10.0 x 10.0	5.0 x 5.0 x 1.5
Sensor Surface [mm]	3.0	1.4
Graded Grid	N/A	Yes
M2/M1 [%]		77.9
Dist 3dB Peak [mm]		8.1

Measurement Results

	Area Scan	Zoom Scan
psSAR1g [W/Kg]	0.118	0.119
psSAR10g [W/Kg]	0.054	0.054
Power Drift [dB]	N/A	0.00



Measurement Report for WLAN 5GHz, EDGE LEFT, Normal, WiFi Chain 0

Exposure Conditions

Band	WLAN 5GHz	TSL Permittivity	35.0
Frequency [MHz] Channel Number	5210.000 42	TSL Conductivity [S/m]	4.51
Group UID	WLAN 10544-AAC	Phantom Section TSL	Flat HSL
Conversion Factor	5.98	Test Distance [mm]	10.00
Communication Configuration	IEEE 802.11ac WiFi (80MHz, MCS0, 99pc duty cycle)		

Hardware Setup

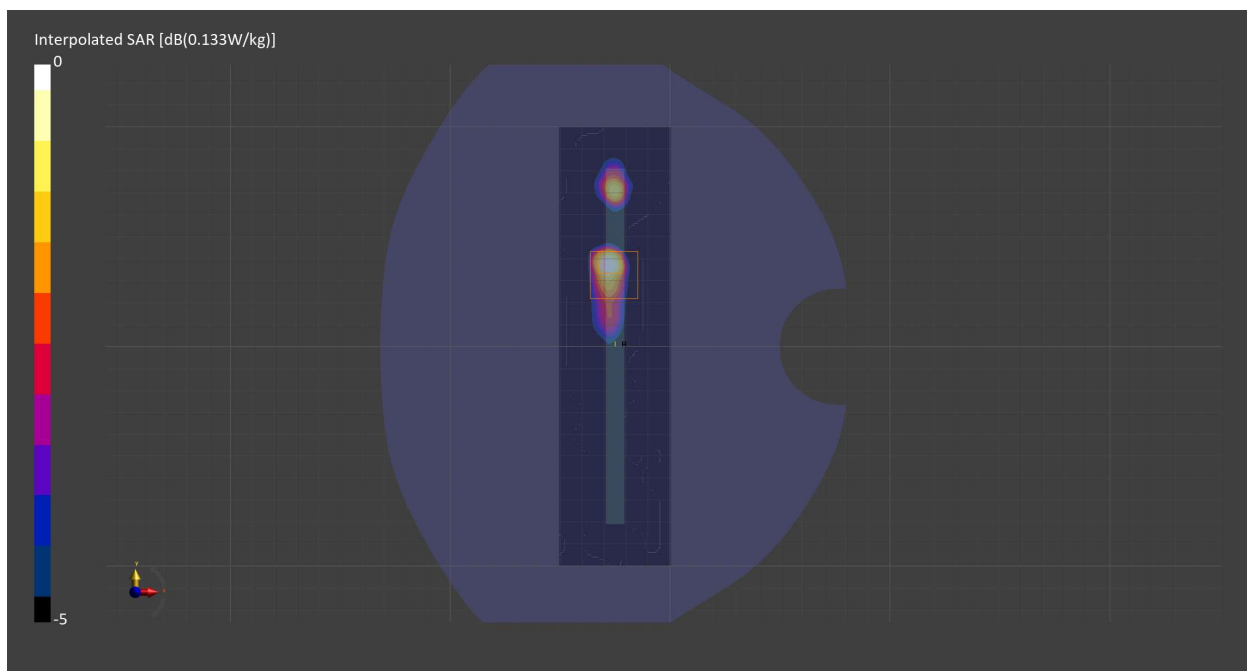
Probe Calibration Date	EX3DV4 - SN7709 2023-11-30	Phantom	Twin-SAM V8.0 (30deg probe tilt) - SN1742
DAE Calibration Date	DAE4 Sn1714 2023-11-22	TSL Meas. Date	HBBL-600-10000 2024-Mar-04

Scans Setup

	Area Scan	Zoom Scan
Grid Extents [mm]	51.0 x 200.0	22.0 x 22.0 x 22.0
Grid Steps [mm]	8.5 x 10.0	4.0 x 4.0 x 1.4
Sensor Surface [mm]	3.0	1.4
Graded Grid	N/A	Yes
M2/M1 [%]		63.7
Dist 3dB Peak [mm]		5.7

Measurement Results

	Area Scan	Zoom Scan
psSAR1g [W/Kg]	0.032	0.030
psSAR10g [W/Kg]	0.011	0.007
Power Drift [dB]	-0.50	-0.19



Measurement Report for WLAN 5GHz, EDGE LEFT, Simul, WiFi Chain 0

Exposure Conditions

Band	WLAN 5GHz	TSL Permittivity	35.0
Frequency [MHz] Channel Number	5210.000 42	TSL Conductivity [S/m]	4.51
Group UID	WLAN 10402-AAE	Phantom Section TSL	Flat HSL
Conversion Factor	5.98	Test Distance [mm]	10.00
Communication Configuration	IEEE 802.11ac WiFi (80MHz, 64-QAM, 99pc duty cycle)		

Hardware Setup

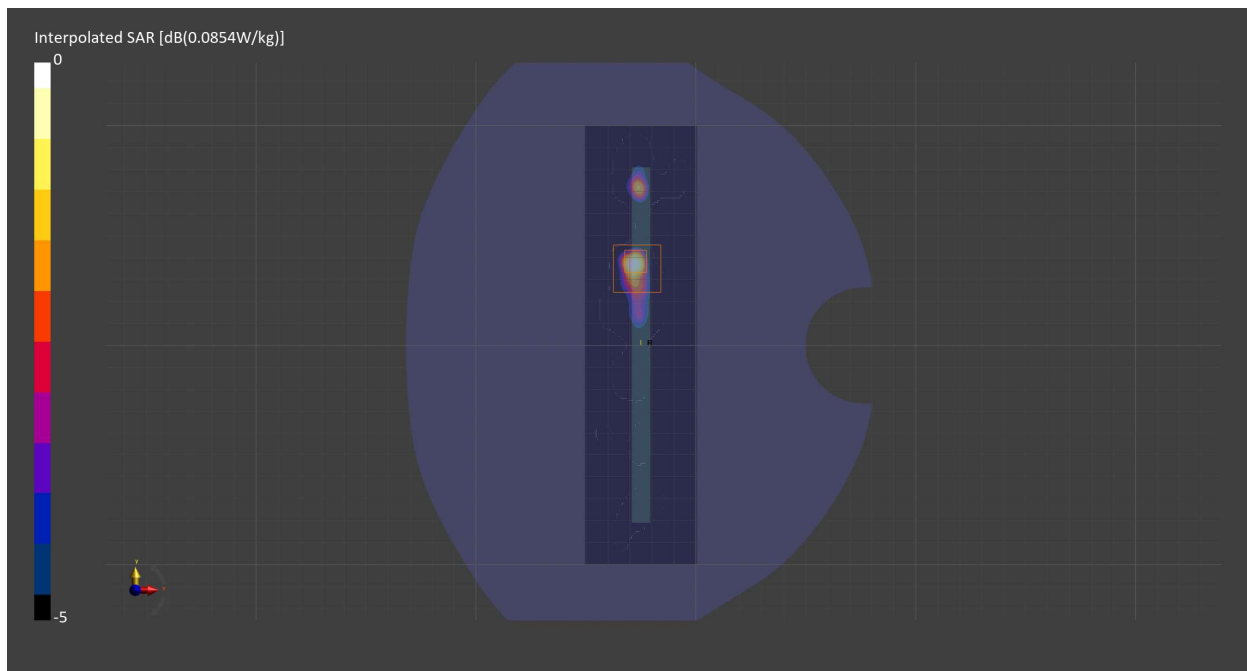
Probe Calibration Date	EX3DV4 - SN7709 2023-11-30	Phantom	Twin-SAM V8.0 (30deg probe tilt) - SN1742
DAE Calibration Date	DAE4 Sn1714 2023-11-22	TSL Meas. Date	HBBL-600-10000 2024-Mar-04

Scans Setup

	Area Scan	Zoom Scan
Grid Extents [mm]	51.0 x 200.0	22.0 x 22.0 x 22.0
Grid Steps [mm]	8.5 x 10.0	4.0 x 4.0 x 1.4
Sensor Surface [mm]	3.0	1.4
Graded Grid	N/A	Yes
M2/M1 [%]		69.0
Dist 3dB Peak [mm]		5.7

Measurement Results

	Area Scan	Zoom Scan
psSAR1g [W/Kg]	0.018	0.018
psSAR10g [W/Kg]	0.005	0.003
Power Drift [dB]	3.75	-5.25



Measurement Report for WLAN 5GHz, BACK, Normal, WiFi Chain 1

Exposure Conditions

Band	WLAN 5GHz	TSL Permittivity	35.0
Frequency [MHz] Channel Number	5210.000 42	TSL Conductivity [S/m]	4.51
Group UID	WLAN 10544-AAC	Phantom Section TSL	Flat HSL
Conversion Factor	5.98	Test Distance [mm]	10.00
Communication Configuration	IEEE 802.11ac WiFi (80MHz, MCS0, 99pc duty cycle)		

Hardware Setup

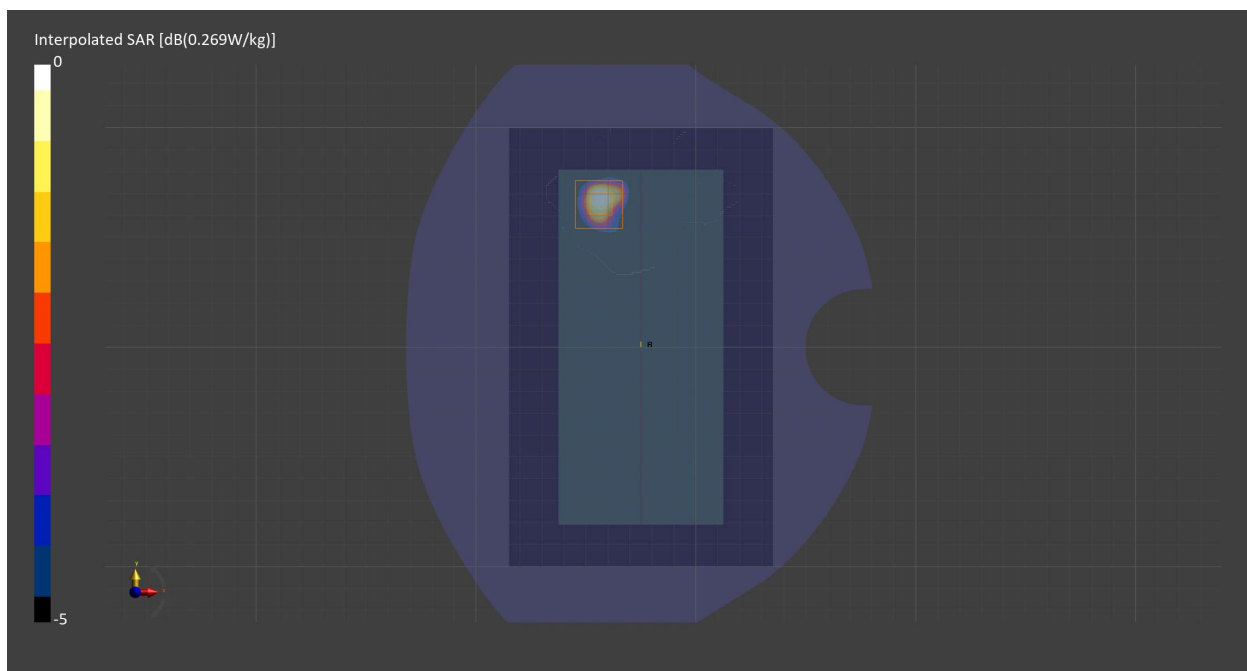
Probe Calibration Date	EX3DV4 - SN7709 2023-11-30	Phantom	Twin-SAM V8.0 (30deg probe tilt) - SN1742
DAE Calibration Date	DAE4 Sn1714 2023-11-22	TSL Meas. Date	HBBL-600-10000 2024-Mar-04

Scans Setup

	Area Scan	Zoom Scan
Grid Extents [mm]	120.0 x 200.0	22.0 x 22.0 x 22.0
Grid Steps [mm]	10.0 x 10.0	4.0 x 4.0 x 1.4
Sensor Surface [mm]	3.0	1.4
Graded Grid	N/A	Yes
M2/M1 [%]		60.7
Dist 3dB Peak [mm]		6.8

Measurement Results

	Area Scan	Zoom Scan
psSAR1g [W/Kg]	0.059	0.066
psSAR10g [W/Kg]	0.019	0.015
Power Drift [dB]	-0.05	-0.06



Measurement Report for WLAN 5GHz, BACK, Simul, WiFi Chain 1

Exposure Conditions

Band	WLAN 5GHz	TSL Permittivity	35.0
Frequency [MHz] Channel Number	5210.000 42	TSL Conductivity [S/m]	4.51
Group UID	WLAN 10544-AAC	Phantom Section TSL	Flat HSL
Conversion Factor	5.98	Test Distance [mm]	10.00
Communication Configuration	IEEE 802.11ac WiFi (80MHz, MCS0, 99pc duty cycle)		

Hardware Setup

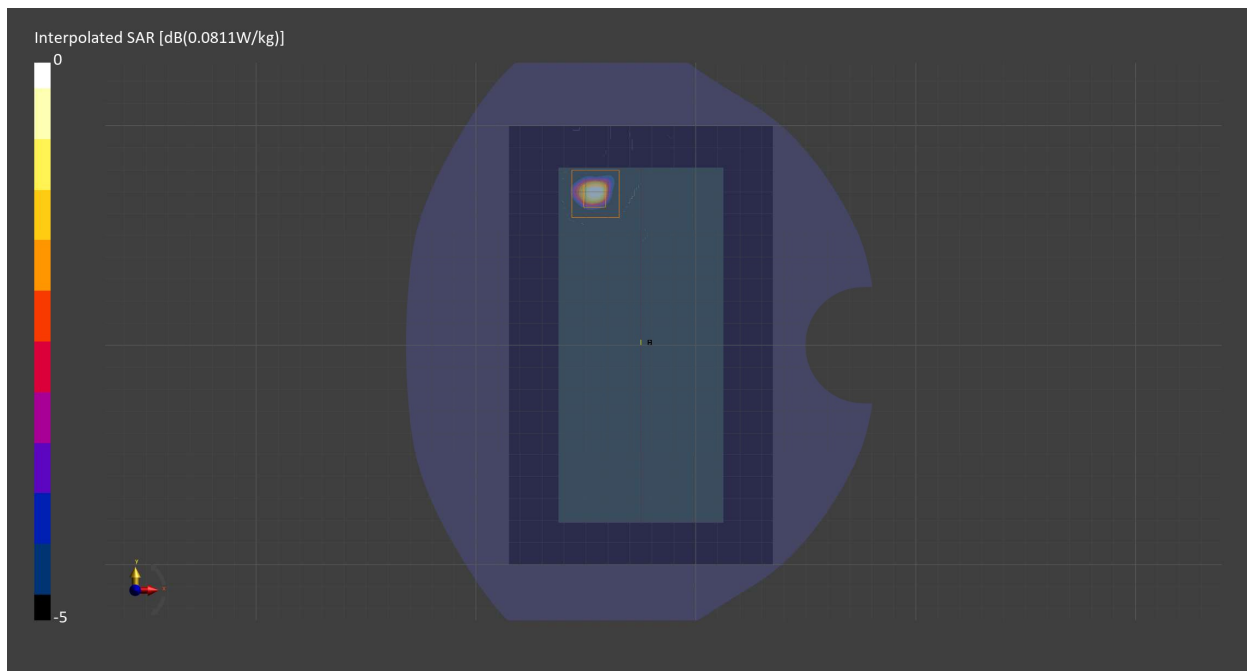
Probe Calibration Date	EX3DV4 - SN7709 2023-11-30	Phantom	Twin-SAM V8.0 (30deg probe tilt) - SN1742
DAE Calibration Date	DAE4 Sn1714 2023-11-22	TSL Meas. Date	HBBL-600-10000 2024-Mar-04

Scans Setup

	Area Scan	Zoom Scan
Grid Extents [mm]	120.0 x 200.0	22.0 x 22.0 x 22.0
Grid Steps [mm]	10.0 x 10.0	4.0 x 4.0 x 1.4
Sensor Surface [mm]	3.0	1.4
Graded Grid	N/A	Yes
M2/M1 [%]		69.6
Dist 3dB Peak [mm]		4.9

Measurement Results

	Area Scan	Zoom Scan
psSAR1g [W/Kg]	0.018	0.016
psSAR10g [W/Kg]	0.005	0
Power Drift [dB]	-1.18	-0.30



Measurement Report for U-NII-1, U-NII-2A, CHEEK, Normal, WiFi Chain 0

Exposure Conditions

Band	U-NII-1, U-NII-2A	TSL Permittivity	34.9
Frequency [MHz] Channel Number	5250.000 50	TSL Conductivity [S/m]	4.56
Group UID	WLAN 10554-AAD	Phantom Section TSL	RightHead HSL
Conversion Factor	5.98	Test Distance [mm]	0.00
Communication Configuration	IEEE 802.11ac WiFi (160MHz, MCS0, 99pc duty cycle)		

Hardware Setup

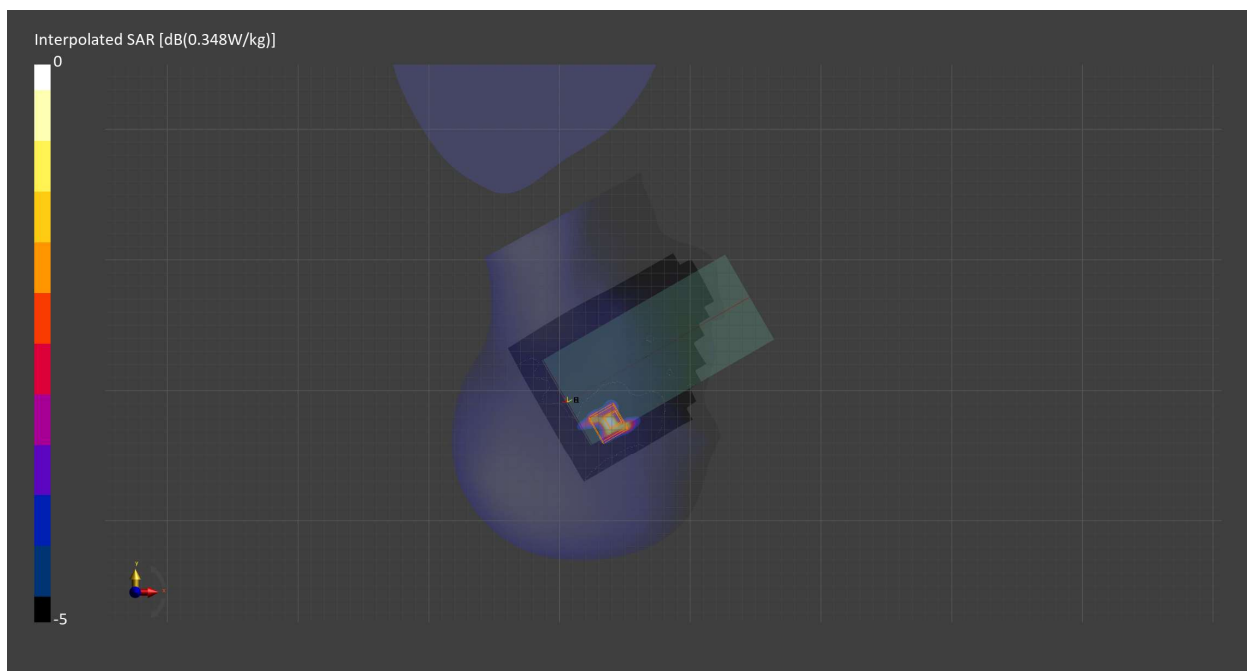
Probe Calibration Date	EX3DV4 - SN7709 2023-11-30	Phantom	Twin-SAM V8.0 (30deg probe tilt) - SN1742
DAE Calibration Date	DAE4 Sn1714 2023-11-22	TSL Meas. Date	HBBL-600-10000 2024-Feb-26

Scans Setup

	Area Scan	Zoom Scan
Grid Extents [mm]	120.0 x 200.0	22.0 x 22.0 x 22.0
Grid Steps [mm]	10.0 x 10.0	4.0 x 4.0 x 1.4
Sensor Surface [mm]	3.0	1.4
Graded Grid	N/A	Yes
M2/M1 [%]		68.8
Dist 3dB Peak [mm]		4.9

Measurement Results

	Area Scan	Zoom Scan
psSAR1g [W/Kg]	0.220	0.287
psSAR10g [W/Kg]	0.081	0.090
Power Drift [dB]	-0.72	-0.78



Measurement Report for U-NII-1, U-NII-2A, BACK, Normal, WiFi Chain 0

Exposure Conditions

Band	U-NII-1, U-NII-2A	TSL Permittivity	34.9
Frequency [MHz] Channel Number	5250.000 50	TSL Conductivity [S/m]	4.56
Group UID	WLAN 10554-AAD	Phantom Section TSL	Flat HSL
Conversion Factor	5.98	Test Distance [mm]	10.00
Communication Configuration	IEEE 802.11ac WiFi (160MHz, MCS0, 99pc duty cycle)		

Hardware Setup

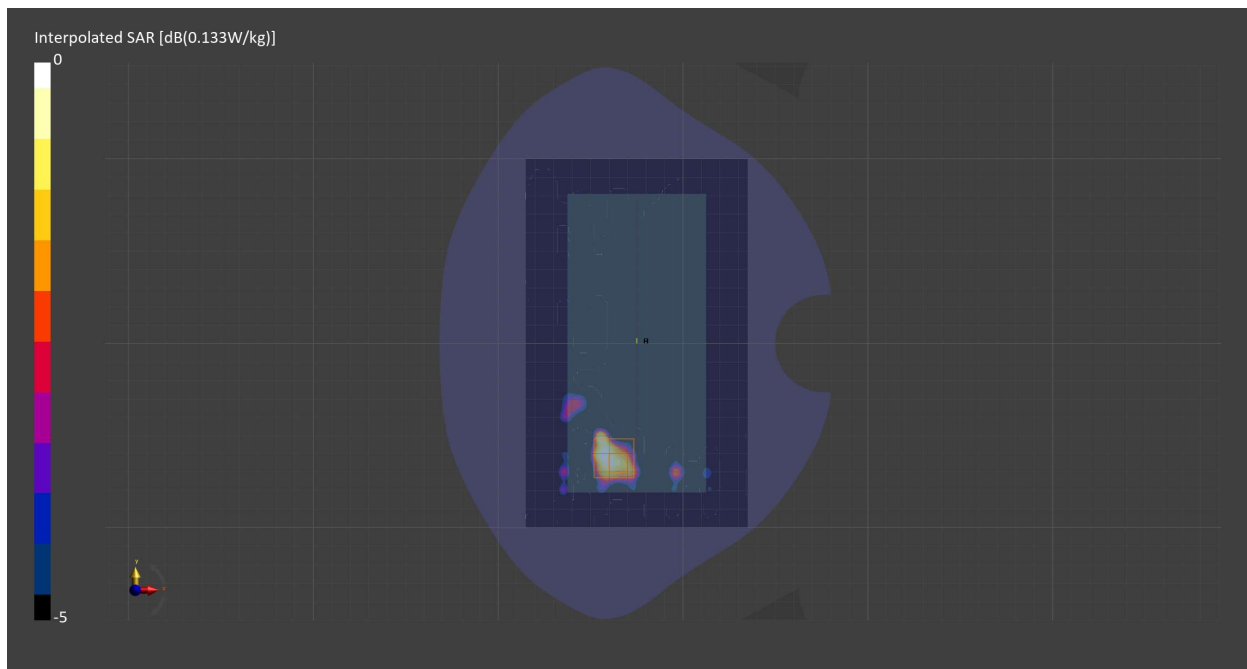
Probe Calibration Date	EX3DV4 - SN7709 2023-11-30	Phantom	Twin-SAM V8.0 (30deg probe tilt) - SN1742
DAE Calibration Date	DAE4 Sn1714 2023-11-22	TSL Meas. Date	HBBL-600-10000 2024-Feb-26

Scans Setup

	Area Scan	Zoom Scan
Grid Extents [mm]	120.0 x 200.0	22.0 x 22.0 x 22.0
Grid Steps [mm]	10.0 x 10.0	4.0 x 4.0 x 1.4
Sensor Surface [mm]	3.0	1.4
Graded Grid	N/A	Yes
M2/M1 [%]		72.2
Dist 3dB Peak [mm]		5.9

Measurement Results

	Area Scan	Zoom Scan
psSAR1g [W/Kg]	0.031	0.032
psSAR10g [W/Kg]	0.012	0.007
Power Drift [dB]	0.11	0.19



Measurement Report for U-NII-1, U-NII-2A, EDGE LEFT, Normal, WiFi Chain 0

Exposure Conditions

Band	U-NII-1, U-NII-2A	TSL Permittivity	34.9
Frequency [MHz] Channel Number	5250.000 50	TSL Conductivity [S/m]	4.56
Group UID	WLAN 10554-AAD	Phantom Section TSL	Flat HSL
Conversion Factor	5.98	Test Distance [mm]	0.00
Communication Configuration	IEEE 802.11ac WiFi (160MHz, MCS0, 99pc duty cycle)		

Hardware Setup

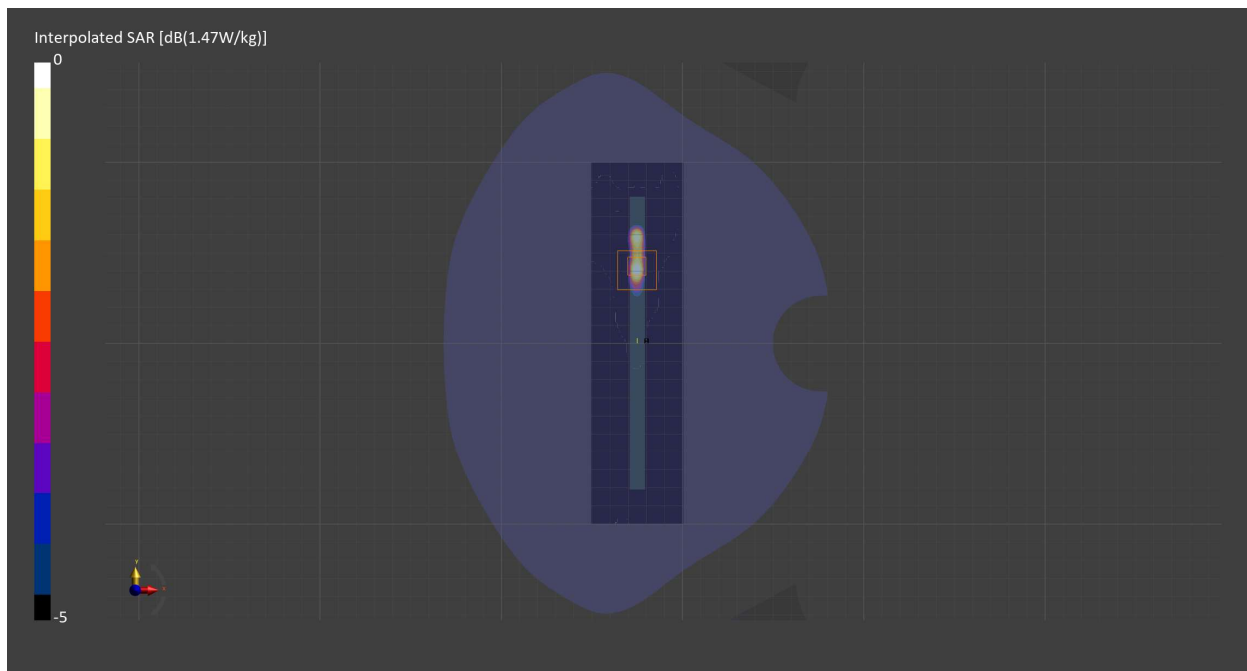
Probe Calibration Date	EX3DV4 - SN7709 2023-11-30	Phantom	Twin-SAM V8.0 (30deg probe tilt) - SN1742
DAE Calibration Date	DAE4 Sn1714 2023-11-22	TSL Meas. Date	HBBL-600-10000 2024-Feb-26

Scans Setup

	Area Scan	Zoom Scan
Grid Extents [mm]	51.0 x 200.0	22.0 x 22.0 x 22.0
Grid Steps [mm]	8.5 x 10.0	2.2 x 2.2 x 1.2
Sensor Surface [mm]	3.0	1.4
Graded Grid	N/A	Yes
M2/M1 [%]		65.8
Dist 3dB Peak [mm]		3.6

Measurement Results

	Area Scan	Zoom Scan
psSAR1g [W/Kg]	0.775	1.02
psSAR10g [W/Kg]	0.200	0.211
Power Drift [dB]	0.02	-0.00



Measurement Report for WLAN 5GHz, CHEEK, Simul, WiFi Chain 0

Exposure Conditions

Band	WLAN 5GHz	TSL Permittivity	34.9
Frequency [MHz] Channel Number	5250.000 50	TSL Conductivity [S/m]	4.56
Group UID	WLAN 10554-AAD	Phantom Section TSL	RightHead HSL
Conversion Factor	5.98	Test Distance [mm]	0.00
Communication Configuration	IEEE 802.11ac WiFi (160MHz, MCS0, 99pc duty cycle)		

Hardware Setup

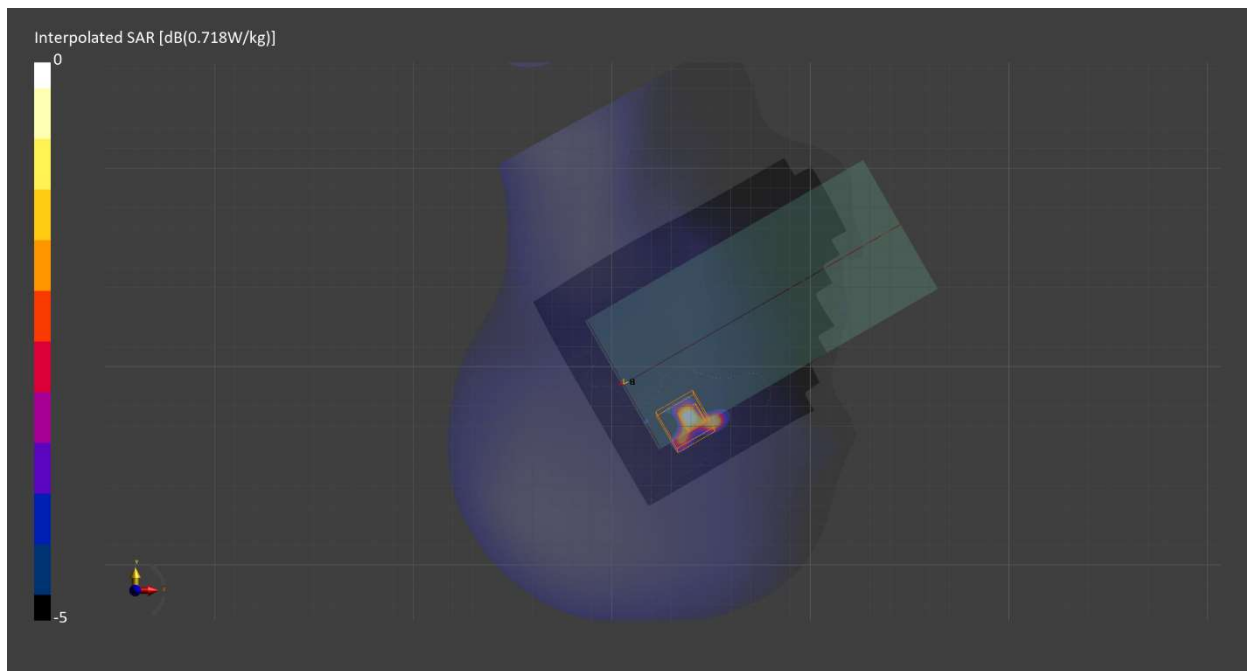
Probe Calibration Date	EX3DV4 - SN7709 2023-11-30	Phantom	Twin-SAM V8.0 (30deg probe tilt) - SN1742
DAE Calibration Date	DAE4 Sn1714 2023-11-22	TSL Meas. Date	HBBL-600-10000 2024-Feb-26

Scans Setup

	Area Scan	Zoom Scan
Grid Extents [mm]	120.0 x 200.0	22.0 x 22.0 x 22.0
Grid Steps [mm]	10.0 x 10.0	3.8 x 3.8 x 1.4
Sensor Surface [mm]	3.0	1.4
Graded Grid	N/A	Yes
M2/M1 [%]		65.8
Dist 3dB Peak [mm]		4.7

Measurement Results

	Area Scan	Zoom Scan
psSAR1g [W/Kg]	0.147	0.156
psSAR10g [W/Kg]	0.050	0.047
Power Drift [dB]	N/A	-1.16



Measurement Report for WLAN 5GHz, EDGE LEFT, Simul, WiFi Chain 0

Exposure Conditions

Band	WLAN 5GHz	TSL Permittivity	34.9
Frequency [MHz] Channel Number	5250.000 50	TSL Conductivity [S/m]	4.56
Group UID	WLAN 10554-AAD	Phantom Section TSL	Flat HSL
Conversion Factor	5.98	Test Distance [mm]	0.00
Communication Configuration	IEEE 802.11ac WiFi (160MHz, MCS0, 99pc duty cycle)		

Hardware Setup

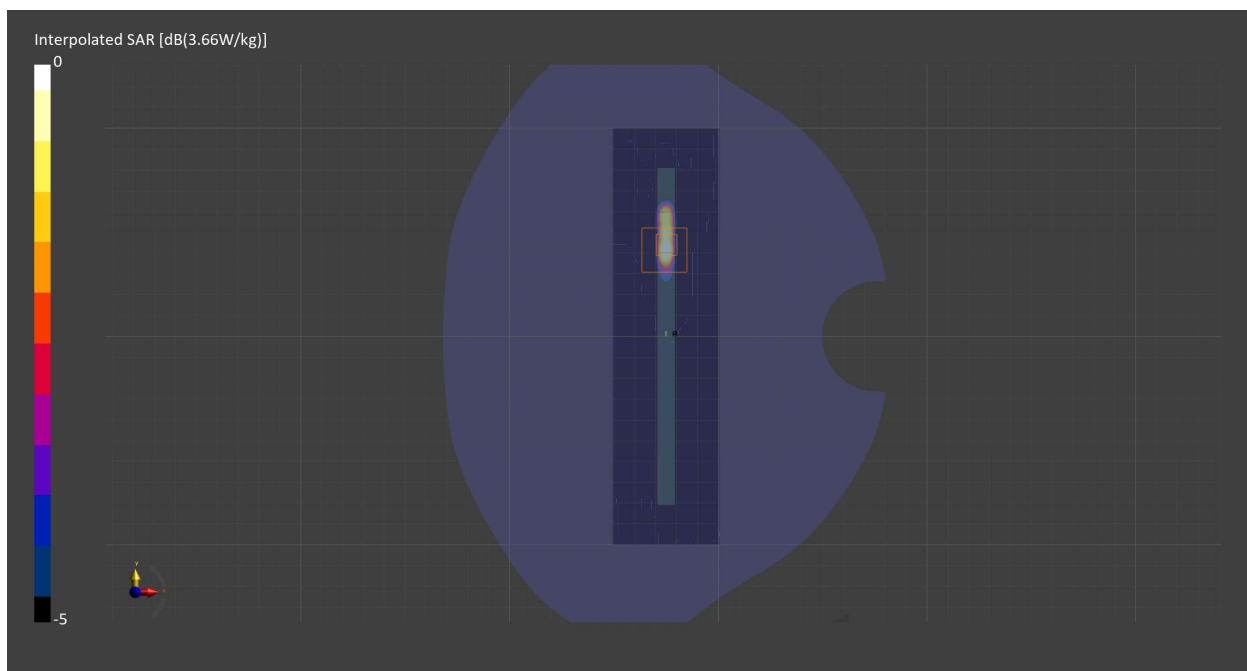
Probe Calibration Date	EX3DV4 - SN7709 2023-11-30	Phantom	Twin-SAM V8.0 (30deg probe tilt) - SN1742
DAE Calibration Date	DAE4 Sn1714 2023-11-22	TSL Meas. Date	HBBL-600-10000 2024-Feb-26

Scans Setup

	Area Scan	Zoom Scan
Grid Extents [mm]	51.0 x 200.0	22.0 x 22.0 x 22.0
Grid Steps [mm]	8.5 x 10.0	2.2 x 2.2 x 1.2
Sensor Surface [mm]	3.0	1.4
Graded Grid	N/A	Yes
M2/M1 [%]		66.7
Dist 3dB Peak [mm]		3.6

Measurement Results

	Area Scan	Zoom Scan
psSAR1g [W/Kg]	0.522	0.661
psSAR10g [W/Kg]	0.135	0.134
Power Drift [dB]	1.20	0.25



Measurement Report for U-NII-1, U-NII-2A, BACK, Normal, WiFi Chain 1

Exposure Conditions

Band	U-NII-1, U-NII-2A	TSL Permittivity	34.9
Frequency [MHz] Channel Number	5250.000 50	TSL Conductivity [S/m]	4.56
Group UID	WLAN 10554-AAD	Phantom Section TSL	Flat HSL
Conversion Factor	5.98	Test Distance [mm]	10.00
Communication Configuration	IEEE 802.11ac WiFi (160MHz, MCS0, 99pc duty cycle)		

Hardware Setup

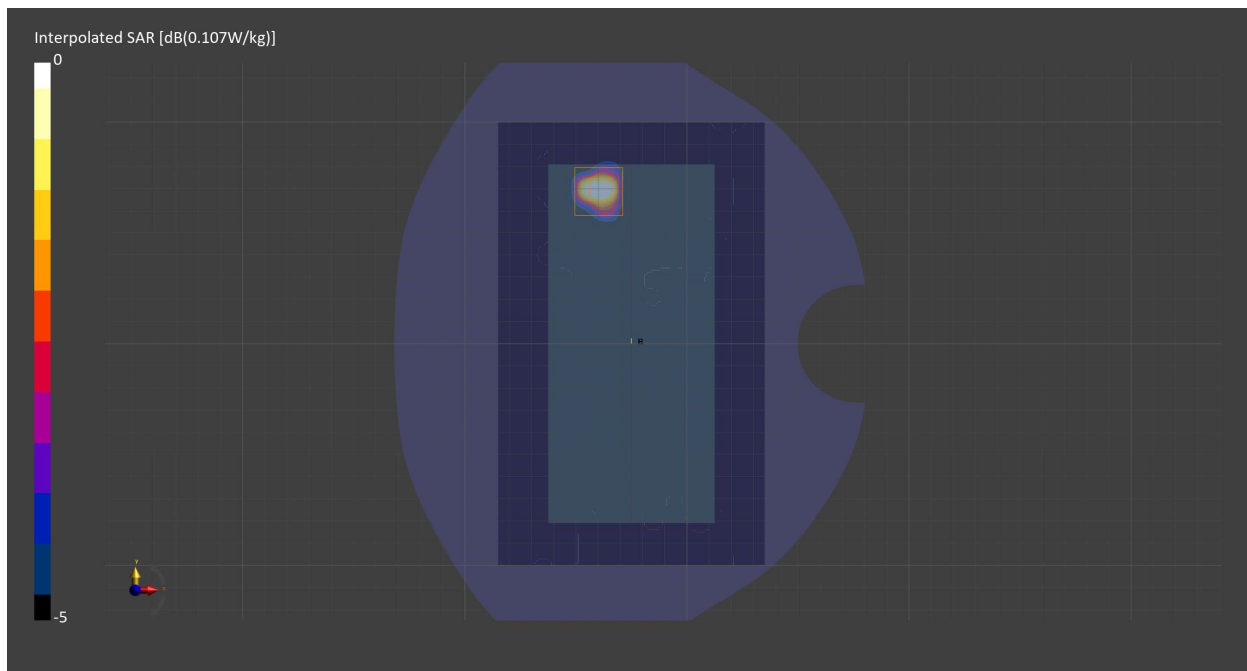
Probe Calibration Date	EX3DV4 - SN7709 2023-11-30	Phantom	Twin-SAM V8.0 (30deg probe tilt) - SN1742
DAE Calibration Date	DAE4 Sn1714 2023-11-22	TSL Meas. Date	HBBL-600-10000 2024-Feb-26

Scans Setup

	Area Scan	Zoom Scan
Grid Extents [mm]	120.0 x 200.0	22.0 x 22.0 x 22.0
Grid Steps [mm]	10.0 x 10.0	4.0 x 4.0 x 1.4
Sensor Surface [mm]	3.0	1.4
Graded Grid	N/A	Yes
M2/M1 [%]		61.7
Dist 3dB Peak [mm]		6.9

Measurement Results

	Area Scan	Zoom Scan
psSAR1g [W/Kg]	0.077	0.078
psSAR10g [W/Kg]	0.025	0.020
Power Drift [dB]	-0.19	-0.14



Measurement Report for U-NII-1, U-NII-2A, BACK, Normal, WiFi Chain 1

Exposure Conditions

Band	U-NII-1, U-NII-2A	TSL Permittivity	34.9
Frequency [MHz] Channel Number	5250.000 50	TSL Conductivity [S/m]	4.56
Group UID	WLAN 10554-AAD	Phantom Section TSL	Flat HSL
Conversion Factor	5.98	Test Distance [mm]	0.00
Communication Configuration	IEEE 802.11ac WiFi (160MHz, MCS0, 99pc duty cycle)		

Hardware Setup

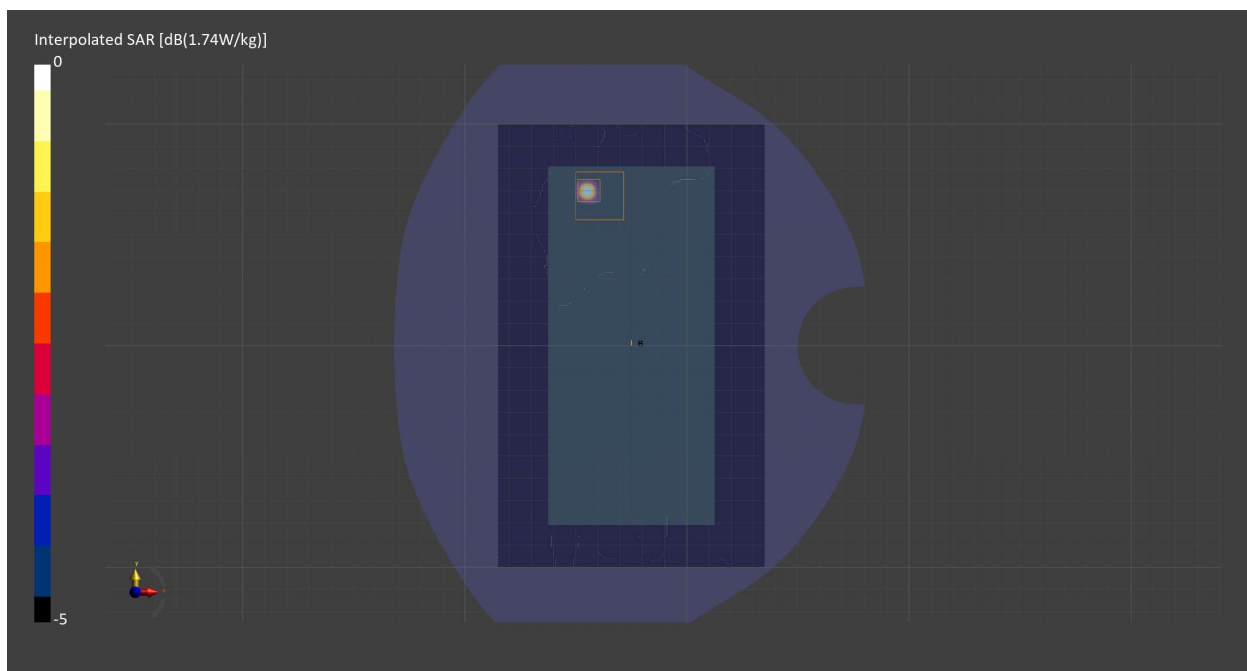
Probe Calibration Date	EX3DV4 - SN7709 2023-11-30	Phantom	Twin-SAM V8.0 (30deg probe tilt) - SN1742
DAE Calibration Date	DAE4 Sn1714 2023-11-22	TSL Meas. Date	HBBL-600-10000 2024-Feb-26

Scans Setup

	Area Scan	Zoom Scan
Grid Extents [mm]	120.0 x 200.0	22.0 x 22.0 x 22.0
Grid Steps [mm]	10.0 x 10.0	2.2 x 2.2 x 1.2
Sensor Surface [mm]	3.0	1.4
Graded Grid	N/A	Yes
M2/M1 [%]		58.9
Dist 3dB Peak [mm]		3.0

Measurement Results

	Area Scan	Zoom Scan
psSAR1g [W/Kg]	0.802	0.796
psSAR10g [W/Kg]	0.178	0.172
Power Drift [dB]	0.00	0.03



Measurement Report for WLAN 5GHz, BACK, Simul, WiFi Chain 1

Exposure Conditions

Band	WLAN 5GHz	TSL Permittivity	34.9
Frequency [MHz] Channel Number	5250.000 50	TSL Conductivity [S/m]	4.56
Group UID	WLAN 10554-AAD	Phantom Section TSL	Flat HSL
Conversion Factor	5.98	Test Distance [mm]	10.00
Communication Configuration	IEEE 802.11ac WiFi (160MHz, MCS0, 99pc duty cycle)		

Hardware Setup

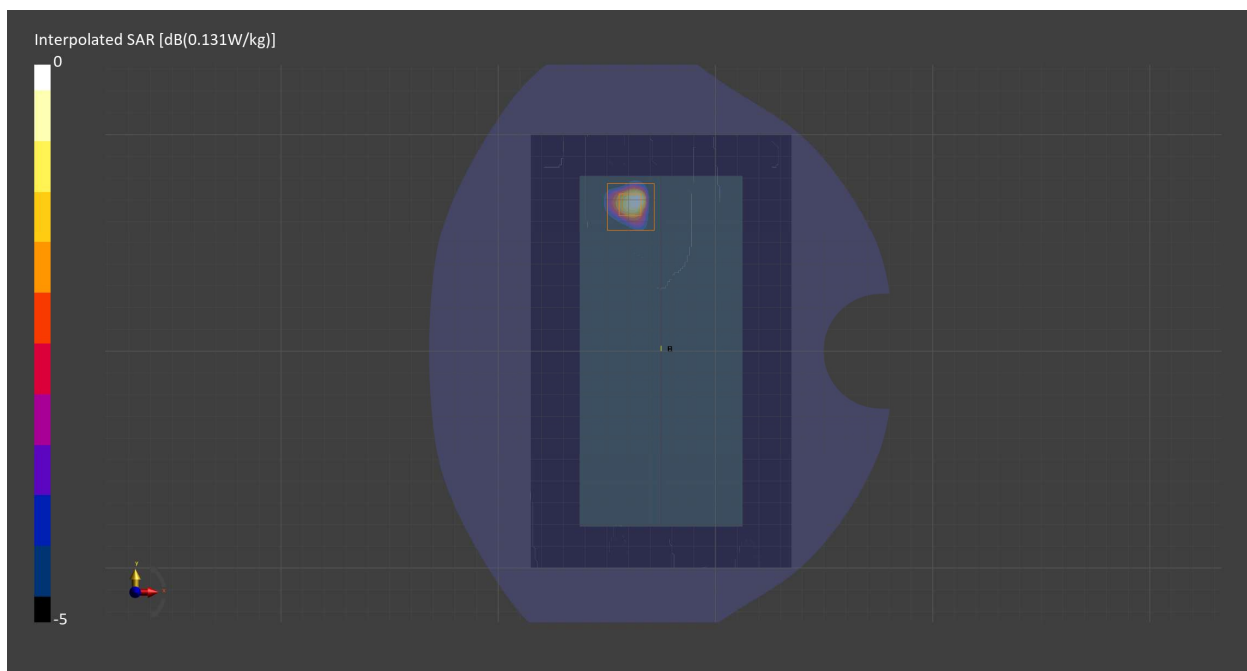
Probe Calibration Date	EX3DV4 - SN7709 2023-11-30	Phantom	Twin-SAM V8.0 (30deg probe tilt) - SN1742
DAE Calibration Date	DAE4 Sn1714 2023-11-22	TSL Meas. Date	HBBL-600-10000 2024-Feb-26

Scans Setup

	Area Scan	Zoom Scan
Grid Extents [mm]	120.0 x 200.0	22.0 x 22.0 x 22.0
Grid Steps [mm]	10.0 x 10.0	4.0 x 4.0 x 1.4
Sensor Surface [mm]	3.0	1.4
Graded Grid	N/A	Yes
M2/M1 [%]		67.2
Dist 3dB Peak [mm]		7.9

Measurement Results

	Area Scan	Zoom Scan
psSAR1g [W/Kg]	0.031	0.031
psSAR10g [W/Kg]	0.009	0.006
Power Drift [dB]	N/A	0.18



Measurement Report for WLAN 5GHz, BACK, Simul, WiFi Chain 1

Exposure Conditions

Band	WLAN 5GHz	TSL Permittivity	34.9
Frequency [MHz] Channel Number	5250.000 50	TSL Conductivity [S/m]	4.56
Group UID	WLAN 10554-AAD	Phantom Section TSL	Flat HSL
Conversion Factor	5.98	Test Distance [mm]	0.00
Communication Configuration	IEEE 802.11ac WiFi (160MHz, MCS0, 99pc duty cycle)		

Hardware Setup

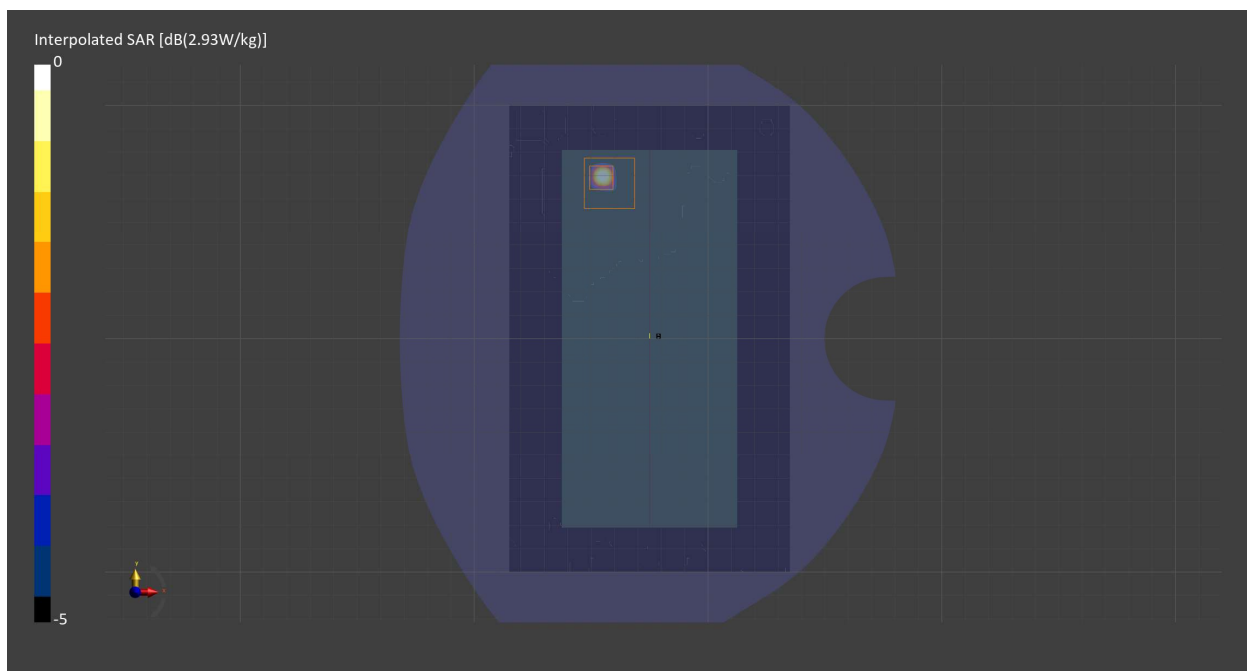
Probe Calibration Date	EX3DV4 - SN7709 2023-11-30	Phantom	Twin-SAM V8.0 (30deg probe tilt) - SN1742
DAE Calibration Date	DAE4 Sn1714 2023-11-22	TSL Meas. Date	HBBL-600-10000 2024-Feb-26

Scans Setup

	Area Scan	Zoom Scan
Grid Extents [mm]	120.0 x 200.0	22.0 x 22.0 x 22.0
Grid Steps [mm]	10.0 x 10.0	2.2 x 2.2 x 1.2
Sensor Surface [mm]	3.0	1.4
Graded Grid	N/A	Yes
M2/M1 [%]		61.4
Dist 3dB Peak [mm]		3.2

Measurement Results

	Area Scan	Zoom Scan
psSAR1g [W/Kg]	0.425	0.421
psSAR10g [W/Kg]	0.100	0.092
Power Drift [dB]	0.99	0.76



Measurement Report for U-NII-2C Standalone, CHEEK, Normal, WiFi Chain 0

Exposure Conditions

Band	U-NII-2C Standalone	TSL Permittivity	34.2
Frequency [MHz] Channel Number	5610.000 122	TSL Conductivity [S/m]	4.96
Group UID	WLAN 10544-AAC	Phantom Section TSL	RightHead HSL
Conversion Factor	4.98	Test Distance [mm]	0.00
Communication Configuration	IEEE 802.11ac WiFi (80MHz, MCS0, 99pc duty cycle)		

Hardware Setup

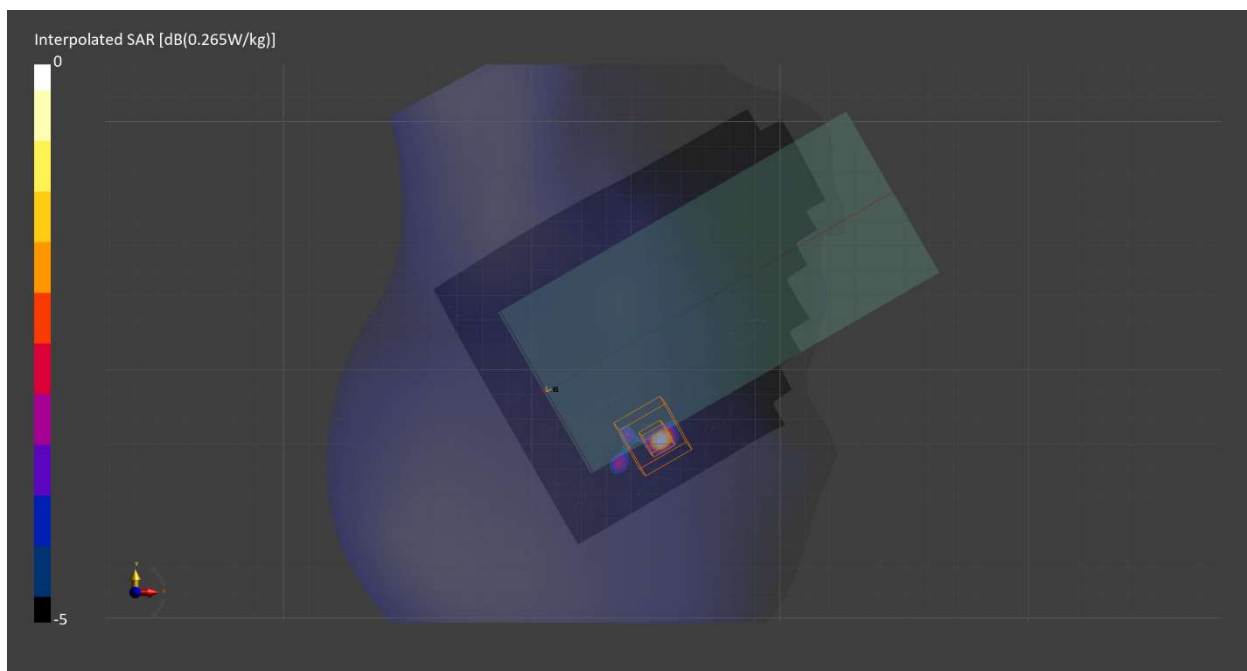
Probe Calibration Date	EX3DV4 - SN7709 2023-11-30	Phantom	Twin-SAM V8.0 (30deg probe tilt) - SN1742
DAE Calibration Date	DAE4 Sn1714 2023-11-22	TSL Meas. Date	HBBL-600-10000 2024-Feb-26

Scans Setup

	Area Scan	Zoom Scan
Grid Extents [mm]	120.0 x 200.0	22.0 x 22.0 x 22.0
Grid Steps [mm]	10.0 x 10.0	3.8 x 3.8 x 1.4
Sensor Surface [mm]	3.0	1.4
Graded Grid	N/A	Yes
M2/M1 [%]		58.0
Dist 3dB Peak [mm]		3.9

Measurement Results

	Area Scan	Zoom Scan
psSAR1g [W/Kg]	0.123	0.131
psSAR10g [W/Kg]	0.030	0.025
Power Drift [dB]	N/A	-4.28



Measurement Report for U-NII-2C Standalone, BACK, Normal, WiFi Chain 0

Exposure Conditions

Band	U-NII-2C Standalone	TSL Permittivity	34.2
Frequency [MHz] Channel Number	5610.000 122	TSL Conductivity [S/m]	4.96
Group UID	WLAN 10544-AAC	Phantom Section TSL	Flat HSL
Conversion Factor	4.98	Test Distance [mm]	10.00
Communication Configuration	IEEE 802.11ac WiFi (80MHz, MCS0, 99pc duty cycle)		

Hardware Setup

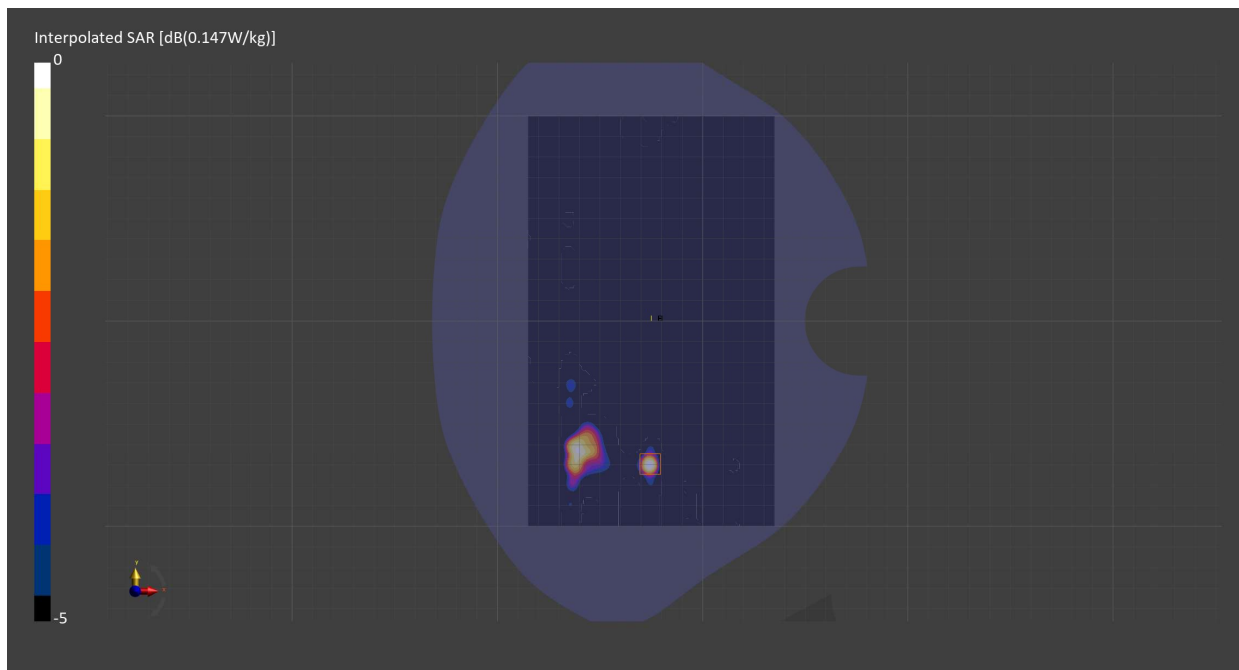
Probe Calibration Date	EX3DV4 - SN7709 2023-11-30	Phantom	Twin-SAM V8.0 (30deg probe tilt) - SN1742
DAE Calibration Date	DAE4 Sn1714 2023-11-22	TSL Meas. Date	HBBL-600-10000 2024-Feb-26

Scans Setup

	Area Scan	Zoom Scan
Grid Extents [mm]	120.0 x 200.0	22.0 x 22.0 x 22.0
Grid Steps [mm]	10.0 x 10.0	4.0 x 4.0 x 1.4
Sensor Surface [mm]	3.0	1.4
Graded Grid	N/A	Yes
M2/M1 [%]		77.1
Dist 3dB Peak [mm]		3.3

Measurement Results

	Area Scan	Zoom Scan
psSAR1g [W/Kg]	0.025	0.015
psSAR10g [W/Kg]	0.008	0
Power Drift [dB]	1.55	1.56



Measurement Report for U-NII-2C Standalone, EDGE LEFT, Normal, WiFi Chain 0

Exposure Conditions

Band	U-NII-2C Standalone	TSL Permittivity	34.2
Frequency [MHz] Channel Number	5610.000 122	TSL Conductivity [S/m]	4.96
Group UID	WLAN 10544-AAC	Phantom Section TSL	Flat HSL
Conversion Factor	4.98	Test Distance [mm]	0.00
Communication Configuration	IEEE 802.11ac WiFi (80MHz, MCS0, 99pc duty cycle)		

Hardware Setup

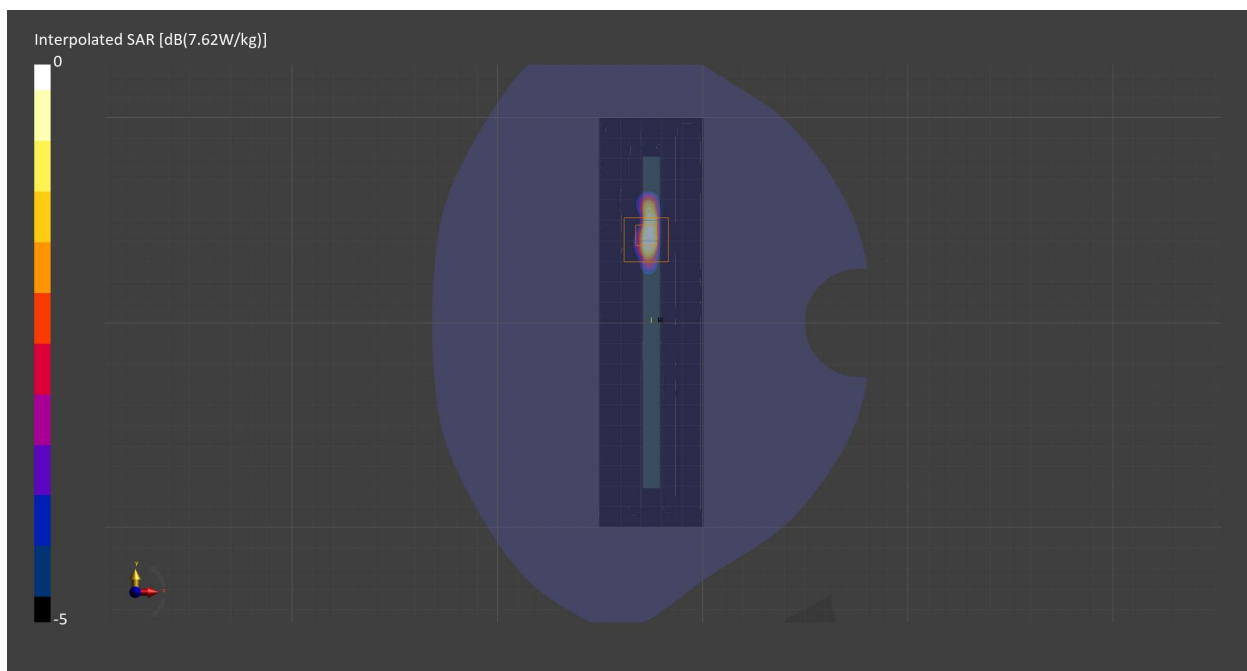
Probe Calibration Date	EX3DV4 - SN7709 2023-11-30	Phantom	Twin-SAM V8.0 (30deg probe tilt) - SN1742
DAE Calibration Date	DAE4 Sn1714 2023-11-22	TSL Meas. Date	HBBL-600-10000 2024-Feb-26

Scans Setup

	Area Scan	Zoom Scan
Grid Extents [mm]	51.0 x 200.0	22.0 x 22.0 x 22.0
Grid Steps [mm]	8.5 x 10.0	2.6 x 2.6 x 1.2
Sensor Surface [mm]	3.0	1.4
Graded Grid	N/A	Yes
M2/M1 [%]		64.6
Dist 3dB Peak [mm]		3.7

Measurement Results

	Area Scan	Zoom Scan
psSAR1g [W/Kg]	0.986	1.29
psSAR10g [W/Kg]	0.265	0.278
Power Drift [dB]	0.04	0.06



Measurement Report for U-NII-2C Standalone, CHEEK, Simul, WiFi Chain 0

Exposure Conditions

Band	U-NII-2C Standalone	TSL Permittivity	34.3
Frequency [MHz] Channel Number	5570.000 114	TSL Conductivity [S/m]	4.92
Group UID	WLAN 10554-AAD	Phantom Section TSL	RightHead HSL
Conversion Factor	4.98	Test Distance [mm]	0.00
Communication Configuration	IEEE 802.11ac WiFi (160MHz, MCS0, 99pc duty cycle)		

Hardware Setup

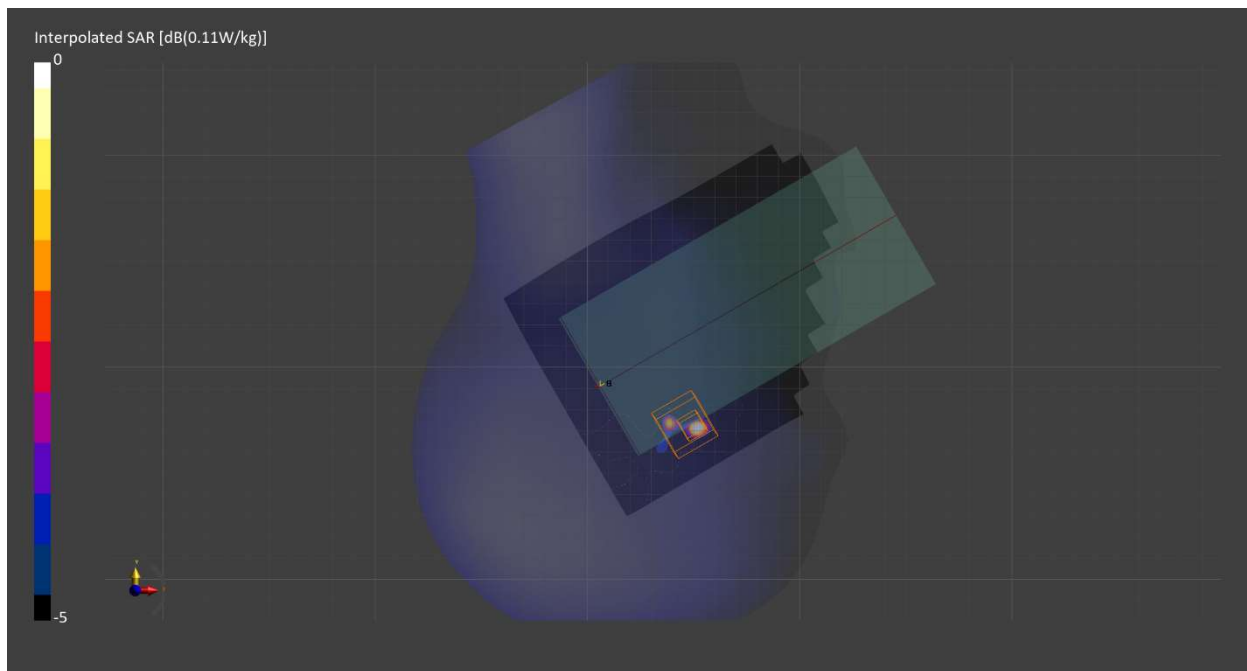
Probe Calibration Date	EX3DV4 - SN7709 2023-11-30	Phantom	Twin-SAM V8.0 (30deg probe tilt) - SN1742
DAE Calibration Date	DAE4 Sn1714 2023-11-22	TSL Meas. Date	HBBL-600-10000 2024-Feb-26

Scans Setup

	Area Scan	Zoom Scan
Grid Extents [mm]	120.0 x 200.0	22.0 x 22.0 x 22.0
Grid Steps [mm]	10.0 x 10.0	2.2 x 2.2 x 1.2
Sensor Surface [mm]	3.0	1.4
Graded Grid	N/A	Yes
M2/M1 [%]		66.9
Dist 3dB Peak [mm]		3.2

Measurement Results

	Area Scan	Zoom Scan
psSAR1g [W/Kg]	0.047	0.062
psSAR10g [W/Kg]	0.010	0.010
Power Drift [dB]	N/A	2.06



Measurement Report for U-NII-2C Standalone, BACK, Simul, WiFi Chain 0

Exposure Conditions

Band	U-NII-2C Standalone	TSL Permittivity	34.3
Frequency [MHz] Channel Number	5570.000 114	TSL Conductivity [S/m]	4.92
Group UID	WLAN 10554-AAD	Phantom Section TSL	Flat HSL
Conversion Factor	4.98	Test Distance [mm]	10.00
Communication Configuration	IEEE 802.11ac WiFi (160MHz, MCS0, 99pc duty cycle)		

Hardware Setup

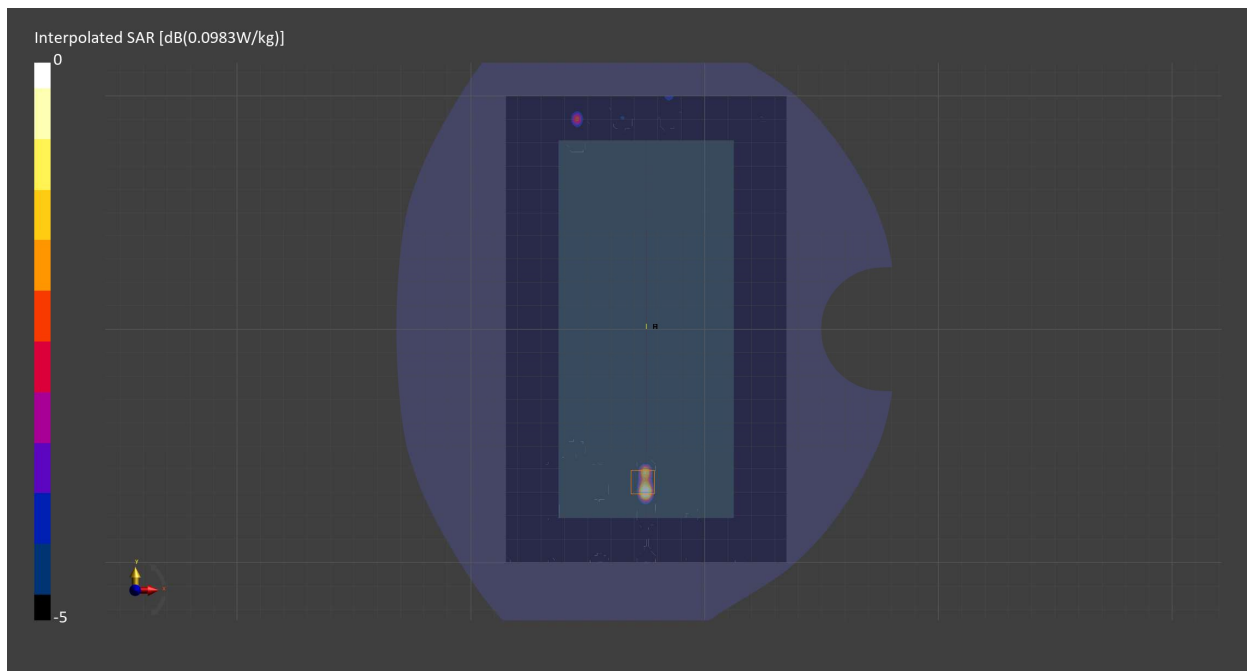
Probe Calibration Date	EX3DV4 - SN7709 2023-11-30	Phantom	Twin-SAM V8.0 (30deg probe tilt) - SN1742
DAE Calibration Date	DAE4 Sn1714 2023-11-22	TSL Meas. Date	HBBL-600-10000 2024-Feb-26

Scans Setup

	Area Scan	Zoom Scan
Grid Extents [mm]	120.0 x 200.0	22.0 x 22.0 x 22.0
Grid Steps [mm]	10.0 x 10.0	2.2 x 2.2 x 1.2
Sensor Surface [mm]	3.0	1.4
Graded Grid	N/A	Yes
M2/M1 [%]		91.9
Dist 3dB Peak [mm]		1.4

Measurement Results

	Area Scan	Zoom Scan
psSAR1g [W/Kg]	0.006	0.002
psSAR10g [W/Kg]	0	0
Power Drift [dB]	N/A	-1.24



Measurement Report for U-NII-2C Standalone, EDGE LEFT, Simul, WiFi Chain 0

Exposure Conditions

Band	U-NII-2C Standalone	TSL Permittivity	34.3
Frequency [MHz] Channel Number	5570.000 114	TSL Conductivity [S/m]	4.92
Group UID	WLAN 10554-AAD	Phantom Section TSL	Flat HSL
Conversion Factor	4.98	Test Distance [mm]	0.00
Communication Configuration	IEEE 802.11ac WiFi (160MHz, MCS0, 99pc duty cycle)		

Hardware Setup

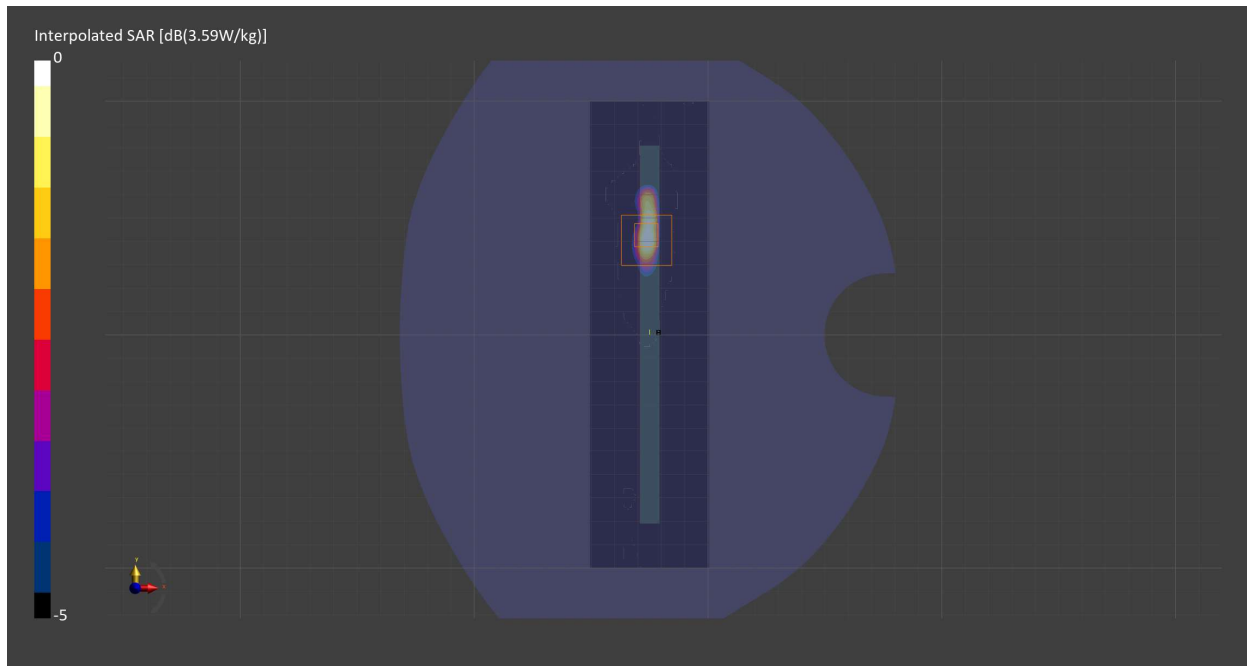
Probe Calibration Date	EX3DV4 - SN7709 2023-11-30	Phantom	Twin-SAM V8.0 (30deg probe tilt) - SN1742
DAE Calibration Date	DAE4 Sn1714 2023-11-22	TSL Meas. Date	HBBL-600-10000 2024-Feb-26

Scans Setup

	Area Scan	Zoom Scan
Grid Extents [mm]	51.0 x 200.0	22.0 x 22.0 x 22.0
Grid Steps [mm]	8.5 x 10.0	3.4 x 3.4 x 1.4
Sensor Surface [mm]	3.0	1.4
Graded Grid	N/A	Yes
M2/M1 [%]		64.1
Dist 3dB Peak [mm]		3.5

Measurement Results

	Area Scan	Zoom Scan
psSAR1g [W/Kg]	0.473	0.616
psSAR10g [W/Kg]	0.122	0.126
Power Drift [dB]	-0.01	-0.05



Measurement Report for U-NII-2C Standalone, BACK, Normal, WiFi Chain 1

Exposure Conditions

Band	U-NII-2C Standalone	TSL Permittivity	34.2
Frequency [MHz] Channel Number	5610.000 122	TSL Conductivity [S/m]	4.96
Group UID	WLAN 10544-AAC	Phantom Section TSL	Flat HSL
Conversion Factor	4.98	Test Distance [mm]	10.00
Communication Configuration	IEEE 802.11ac WiFi (80MHz, MCS0, 99pc duty cycle)		

Hardware Setup

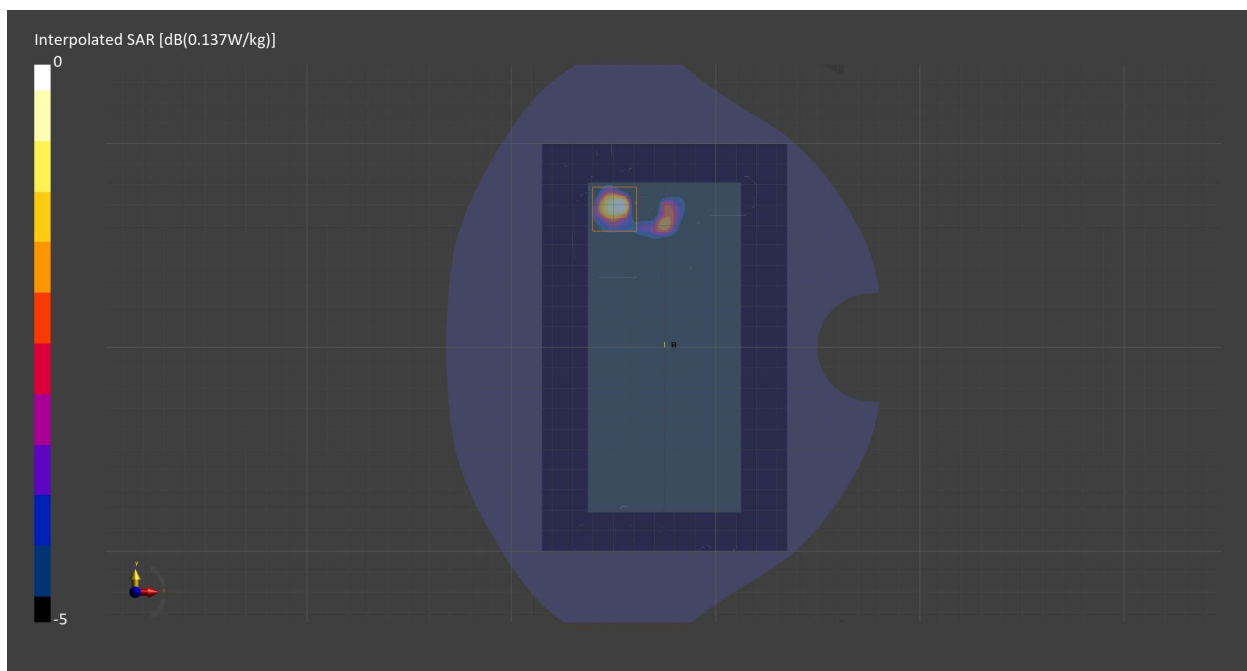
Probe Calibration Date	EX3DV4 - SN7709 2023-11-30	Phantom	Twin-SAM V8.0 (30deg probe tilt) - SN1742
DAE Calibration Date	DAE4 Sn1714 2023-11-22	TSL Meas. Date	HBBL-600-10000 2024-Feb-26

Scans Setup

	Area Scan	Zoom Scan
Grid Extents [mm]	120.0 x 200.0	22.0 x 22.0 x 22.0
Grid Steps [mm]	10.0 x 10.0	4.0 x 4.0 x 1.4
Sensor Surface [mm]	3.0	1.4
Graded Grid	N/A	Yes
M2/M1 [%]		51.3
Dist 3dB Peak [mm]		4.8

Measurement Results

	Area Scan	Zoom Scan
psSAR1g [W/Kg]	0.033	0.027
psSAR10g [W/Kg]	0.01	0.003
Power Drift [dB]	1.88	0.82



Measurement Report for U-NII-2C Standalone, BACK, Normal, WiFi Chain 1

Exposure Conditions

Band	U-NII-2C Standalone	TSL Permittivity	34.2
Frequency [MHz] Channel Number	5610.000 122	TSL Conductivity [S/m]	4.96
Group UID	WLAN 10544-AAC	Phantom Section TSL	Flat HSL
Conversion Factor	4.98	Test Distance [mm]	0.00
Communication Configuration	IEEE 802.11ac WiFi (80MHz, MCS0, 99pc duty cycle)		

Hardware Setup

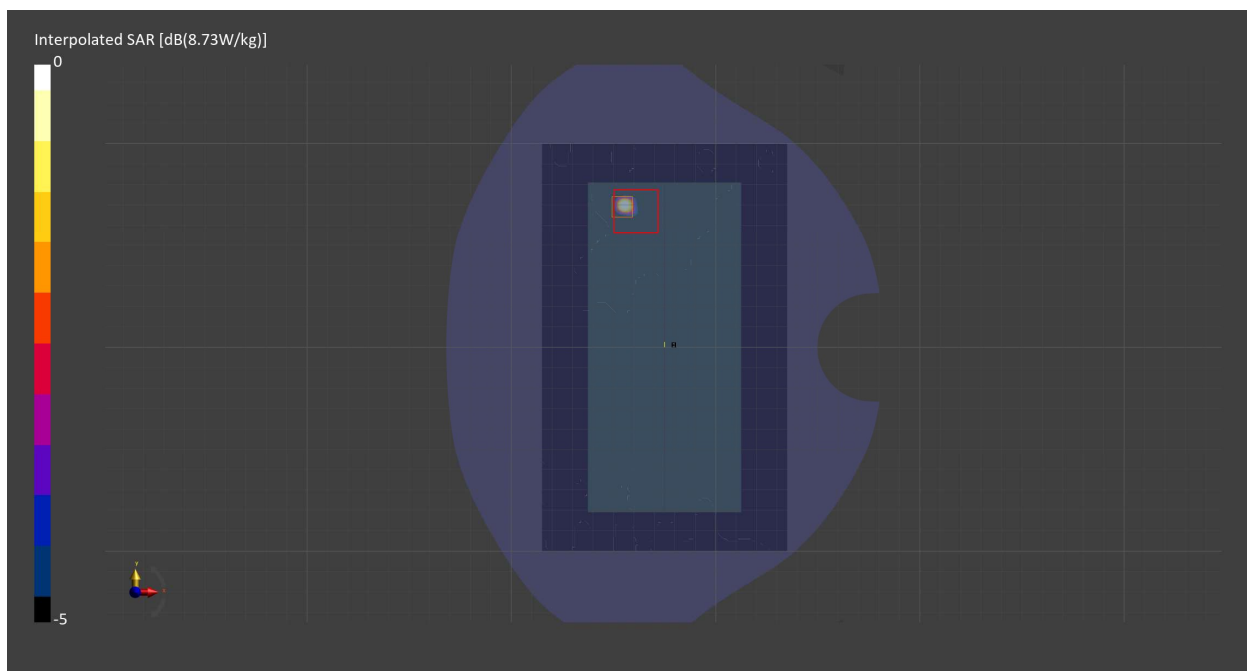
Probe Calibration Date	EX3DV4 - SN7709 2023-11-30	Phantom	Twin-SAM V8.0 (30deg probe tilt) - SN1742
DAE Calibration Date	DAE4 Sn1714 2023-11-22	TSL Meas. Date	HBBL-600-10000 2024-Feb-26

Scans Setup

	Area Scan	Zoom Scan
Grid Extents [mm]	120.0 x 200.0	22.0 x 22.0 x 22.0
Grid Steps [mm]	10.0 x 10.0	1.8 x 1.8 x 1.2
Sensor Surface [mm]	3.0	1.4
Graded Grid	N/A	Yes
M2/M1 [%]		57.3
Dist 3dB Peak [mm]		2.8

Measurement Results

	Area Scan	Zoom Scan
psSAR1g [W/Kg]	1.09	0.968
psSAR10g [W/Kg]	0.238	0.233
Power Drift [dB]	-0.06	-0.03



Measurement Report for U-NII-2C Standalone, BACK, Simul, WiFi Chain 1

Exposure Conditions

Band	U-NII-2C Standalone	TSL Permittivity	34.3
Frequency [MHz] Channel Number	5570.000 114	TSL Conductivity [S/m]	4.92
Group UID	WLAN 10554-AAD	Phantom Section TSL	Flat HSL
Conversion Factor	4.98	Test Distance [mm]	10.00
Communication Configuration	IEEE 802.11ac WiFi (160MHz, MCS0, 99pc duty cycle)		

Hardware Setup

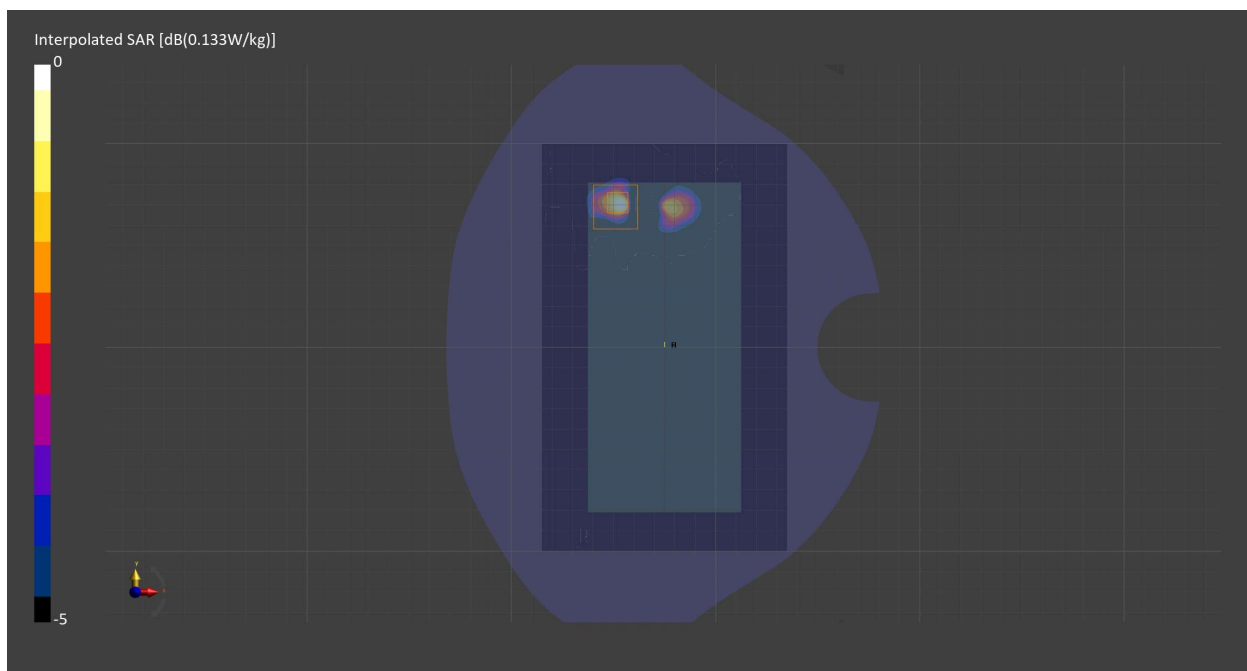
Probe Calibration Date	EX3DV4 - SN7709 2023-11-30	Phantom	Twin-SAM V8.0 (30deg probe tilt) - SN1742
DAE Calibration Date	DAE4 Sn1714 2023-11-22	TSL Meas. Date	HBBL-600-10000 2024-Feb-26

Scans Setup

	Area Scan	Zoom Scan
Grid Extents [mm]	120.0 x 200.0	22.0 x 22.0 x 22.0
Grid Steps [mm]	10.0 x 10.0	3.8 x 3.8 x 1.4
Sensor Surface [mm]	3.0	1.4
Graded Grid	N/A	Yes
M2/M1 [%]		46.9
Dist 3dB Peak [mm]		7.1

Measurement Results

	Area Scan	Zoom Scan
psSAR1g [W/Kg]	0.030	0.033
psSAR10g [W/Kg]	0.009	0.008
Power Drift [dB]	2.13	2.07



Measurement Report for U-NII-2C Standalone, BACK, Simul, WiFi Chain 1

Exposure Conditions

Band	U-NII-2C Standalone	TSL Permittivity	34.3
Frequency [MHz] Channel Number	5570.000 114	TSL Conductivity [S/m]	4.92
Group UID	WLAN 10554-AAD	Phantom Section TSL	Flat HSL
Conversion Factor	4.98	Test Distance [mm]	0.00
Communication Configuration	IEEE 802.11ac WiFi (160MHz, MCS0, 99pc duty cycle)		

Hardware Setup

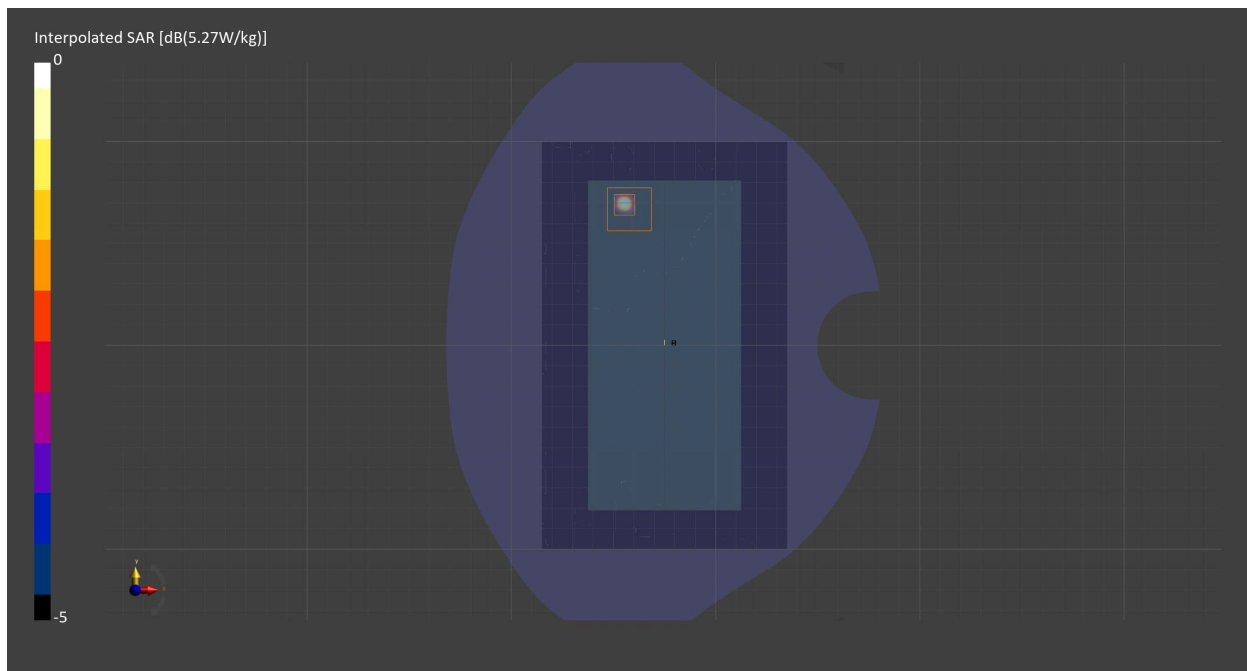
Probe Calibration Date	EX3DV4 - SN7709 2023-11-30	Phantom	Twin-SAM V8.0 (30deg probe tilt) - SN1742
DAE Calibration Date	DAE4 Sn1714 2023-11-22	TSL Meas. Date	HBBL-600-10000 2024-Feb-26

Scans Setup

	Area Scan	Zoom Scan
Grid Extents [mm]	120.0 x 200.0	22.0 x 22.0 x 22.0
Grid Steps [mm]	10.0 x 10.0	1.8 x 1.8 x 1.2
Sensor Surface [mm]	3.0	1.4
Graded Grid	N/A	Yes
M2/M1 [%]		60.1
Dist 3dB Peak [mm]		2.8

Measurement Results

	Area Scan	Zoom Scan
psSAR1g [W/Kg]	0.617	0.598
psSAR10g [W/Kg]	0.130	0.108
Power Drift [dB]	0.95	1.30



Measurement Report for WLAN 5GHz, CHEEK, Normal, WiFi Chain 0

Exposure Conditions

Band	WLAN 5GHz	TSL Permittivity	33.9
Frequency [MHz] Channel Number	5795.000 159	TSL Conductivity [S/m]	5.19
Group UID	WLAN 10114-CAD	Phantom Section TSL	RightHead HSL
Conversion Factor	5.26	Test Distance [mm]	0.00
Communication Configuration	IEEE 802.11n (HT Greenfield, 13.5 Mbps, BPSK)		

Hardware Setup

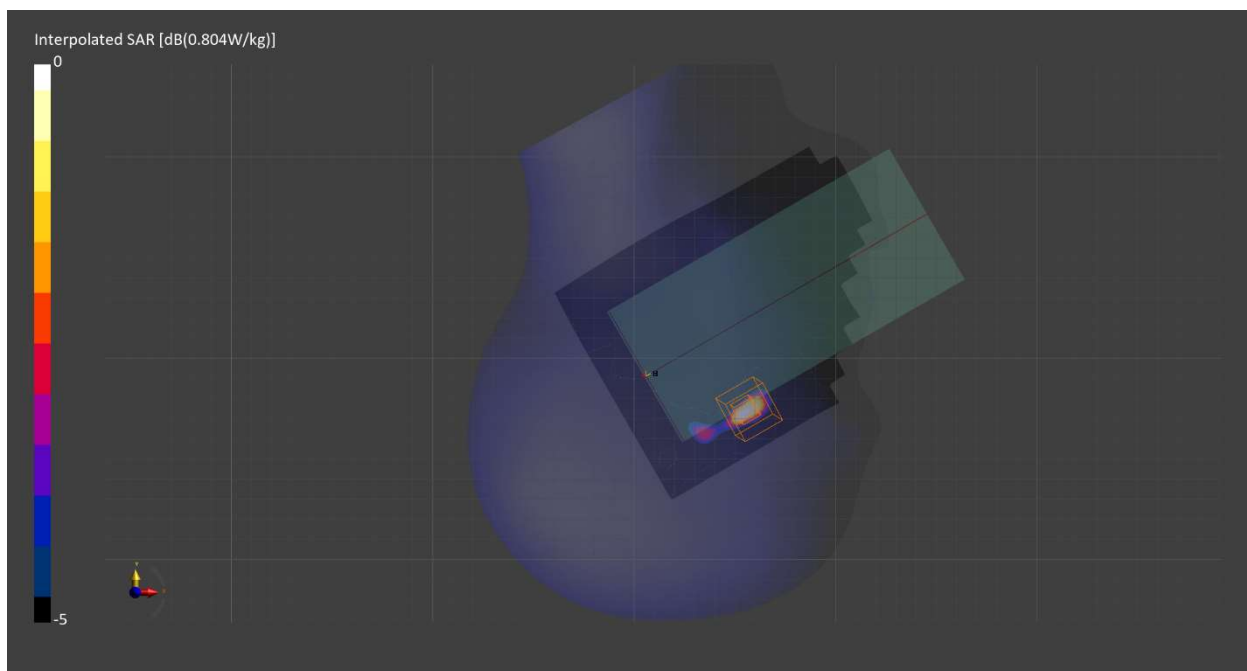
Probe Calibration Date	EX3DV4 - SN7709 2023-11-30	Phantom	Twin-SAM V8.0 (30deg probe tilt) - SN1742
DAE Calibration Date	DAE4 Sn1714 2023-11-22	TSL Meas. Date	HBBL-600-10000 2024-Feb-26

Scans Setup

	Area Scan	Zoom Scan
Grid Extents [mm]	120.0 x 200.0	22.0 x 22.0 x 22.0
Grid Steps [mm]	10.0 x 10.0	3.9 x 3.9 x 1.4
Sensor Surface [mm]	3.0	1.4
Graded Grid	N/A	Yes
M2/M1 [%]		60.1
Dist 3dB Peak [mm]		4.0

Measurement Results

	Area Scan	Zoom Scan
psSAR1g [W/Kg]	0.151	0.169
psSAR10g [W/Kg]	0.041	0.040
Power Drift [dB]	1.36	N/A



Measurement Report for WLAN 5GHz, BACK, Normal, WiFi Chain 0

Exposure Conditions

Band	WLAN 5GHz	TSL Permittivity	33.9
Frequency [MHz] Channel Number	5795.000 159	TSL Conductivity [S/m]	5.19
Group UID	WLAN 10114-CAD	Phantom Section TSL	Flat HSL
Conversion Factor	5.26	Test Distance [mm]	10.00
Communication Configuration	IEEE 802.11n (HT Greenfield, 13.5 Mbps, BPSK)		

Hardware Setup

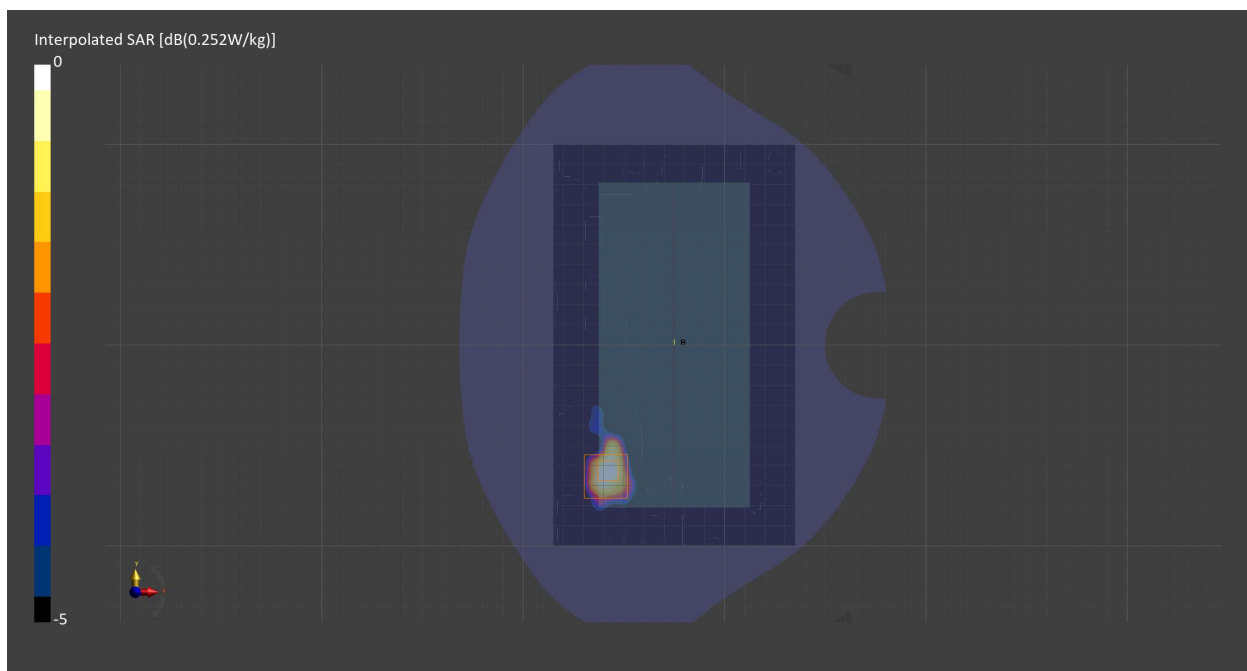
Probe Calibration Date	EX3DV4 - SN7709 2023-11-30	Phantom	Twin-SAM V8.0 (30deg probe tilt) - SN1742
DAE Calibration Date	DAE4 Sn1714 2023-11-22	TSL Meas. Date	HBBL-600-10000 2024-Feb-26

Scans Setup

	Area Scan	Zoom Scan
Grid Extents [mm]	120.0 x 200.0	22.0 x 22.0 x 22.0
Grid Steps [mm]	10.0 x 10.0	4.0 x 4.0 x 1.4
Sensor Surface [mm]	3.0	1.4
Graded Grid	N/A	Yes
M2/M1 [%]		66.7
Dist 3dB Peak [mm]		7.6

Measurement Results

	Area Scan	Zoom Scan
psSAR1g [W/Kg]	0.067	0.059
psSAR10g [W/Kg]	0.025	0.016
Power Drift [dB]	-0.24	-2.68



Measurement Report for WLAN 5GHz, EDGE LEFT, Normal, WiFi Chain 0

Exposure Conditions

Band	WLAN 5GHz	TSL Permittivity	33.9
Frequency [MHz] Channel Number	5795.000 159	TSL Conductivity [S/m]	5.19
Group UID	WLAN 10114-CAD	Phantom Section TSL	Flat HSL
Conversion Factor	5.26	Test Distance [mm]	10.00
Communication Configuration	IEEE 802.11n (HT Greenfield, 13.5 Mbps, BPSK)		

Hardware Setup

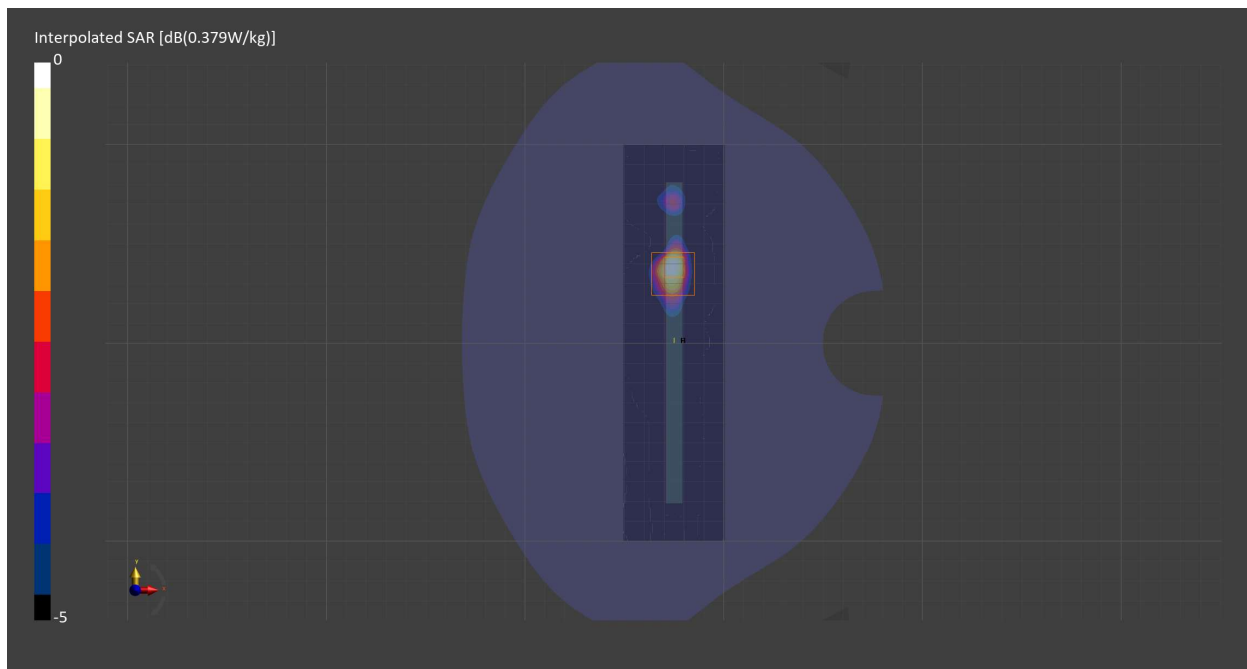
Probe Calibration Date	EX3DV4 - SN7709 2023-11-30	Phantom	Twin-SAM V8.0 (30deg probe tilt) - SN1742
DAE Calibration Date	DAE4 Sn1714 2023-11-22	TSL Meas. Date	HBBL-600-10000 2024-Feb-26

Scans Setup

	Area Scan	Zoom Scan
Grid Extents [mm]	51.0 x 200.0	22.0 x 22.0 x 22.0
Grid Steps [mm]	8.5 x 10.0	4.0 x 4.0 x 1.4
Sensor Surface [mm]	3.0	1.4
Graded Grid	N/A	Yes
M2/M1 [%]		63.4
Dist 3dB Peak [mm]		8.0

Measurement Results

	Area Scan	Zoom Scan
psSAR1g [W/Kg]	0.094	0.092
psSAR10g [W/Kg]	0.031	0.027
Power Drift [dB]	0.11	0.18



Measurement Report for WLAN 5GHz, CHEEK, Simul, WiFi Chain 0

Exposure Conditions

Band	WLAN 5GHz	TSL Permittivity	34.1
Frequency [MHz] Channel Number	5755.000 151	TSL Conductivity [S/m]	5.13
Group UID	WLAN 10114-CAD	Phantom Section TSL	RightHead HSL
Conversion Factor	5.26	Test Distance [mm]	0.00
Communication Configuration	IEEE 802.11n (HT Greenfield, 13.5 Mbps, BPSK)		

Hardware Setup

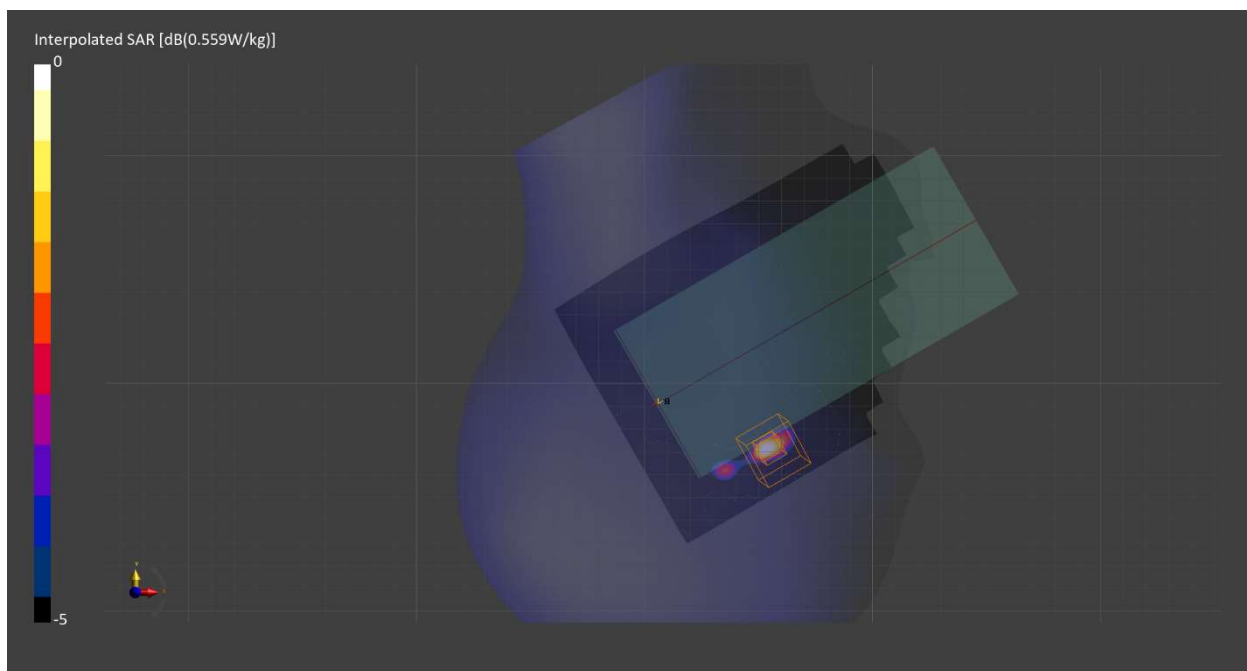
Probe Calibration Date	EX3DV4 - SN7709 2023-11-30	Phantom	Twin-SAM V8.0 (30deg probe tilt) - SN1742
DAE Calibration Date	DAE4 Sn1714 2023-11-22	TSL Meas. Date	HBBL-600-10000 2024-Mar-04

Scans Setup

	Area Scan	Zoom Scan
Grid Extents [mm]	120.0 x 200.0	22.0 x 22.0 x 22.0
Grid Steps [mm]	10.0 x 10.0	2.3 x 2.3 x 1.2
Sensor Surface [mm]	3.0	1.4
Graded Grid	N/A	Yes
M2/M1 [%]		68.6
Dist 3dB Peak [mm]		4.1

Measurement Results

	Area Scan	Zoom Scan
psSAR1g [W/Kg]	0.094	0.108
psSAR10g [W/Kg]	0.024	0.022
Power Drift [dB]	0.01	-0.18



Measurement Report for WLAN 5GHz, BACK, Simul, WiFi Chain 0

Exposure Conditions

Band	WLAN 5GHz	TSL Permittivity	34.1
Frequency [MHz] Channel Number	5755.000 151	TSL Conductivity [S/m]	5.13
Group UID	WLAN 10114-CAD	Phantom Section TSL	Flat HSL
Conversion Factor	5.26	Test Distance [mm]	10.00
Communication Configuration	IEEE 802.11n (HT Greenfield, 13.5 Mbps, BPSK)		

Hardware Setup

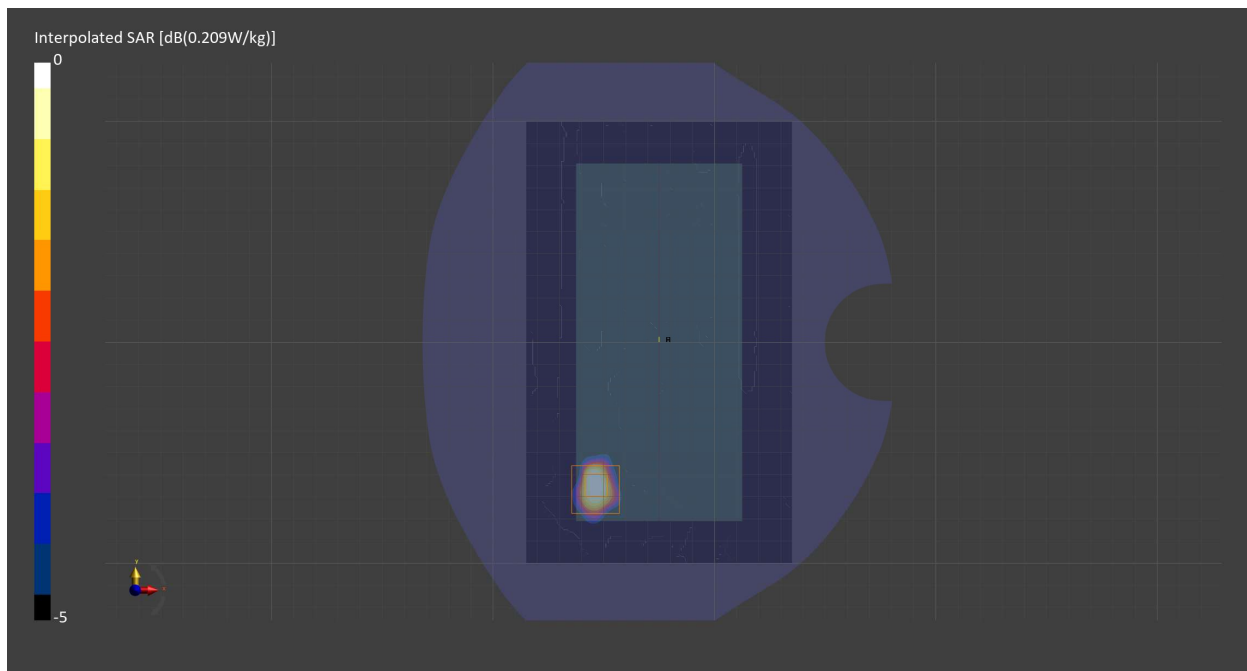
Probe Calibration Date	EX3DV4 - SN7709 2023-11-30	Phantom	Twin-SAM V8.0 (30deg probe tilt) - SN1742
DAE Calibration Date	DAE4 Sn1714 2023-11-22	TSL Meas. Date	HBBL-600-10000 2024-Mar-04

Scans Setup

	Area Scan	Zoom Scan
Grid Extents [mm]	120.0 x 200.0	22.0 x 22.0 x 22.0
Grid Steps [mm]	10.0 x 10.0	4.0 x 4.0 x 1.4
Sensor Surface [mm]	3.0	1.4
Graded Grid	N/A	Yes
M2/M1 [%]		60.9
Dist 3dB Peak [mm]		6.1

Measurement Results

	Area Scan	Zoom Scan
psSAR1g [W/Kg]	0.055	0.050
psSAR10g [W/Kg]	0.018	0.013
Power Drift [dB]	1.30	-0.91



Measurement Report for WLAN 5GHz, EDGE LEFT, Simul, WiFi Chain 0

Exposure Conditions

Band	WLAN 5GHz	TSL Permittivity	34.1
Frequency [MHz] Channel Number	5755.000 151	TSL Conductivity [S/m]	5.13
Group UID	WLAN 10114-CAD	Phantom Section TSL	Flat HSL
Conversion Factor	5.26	Test Distance [mm]	10.00
Communication Configuration	IEEE 802.11n (HT Greenfield, 13.5 Mbps, BPSK)		

Hardware Setup

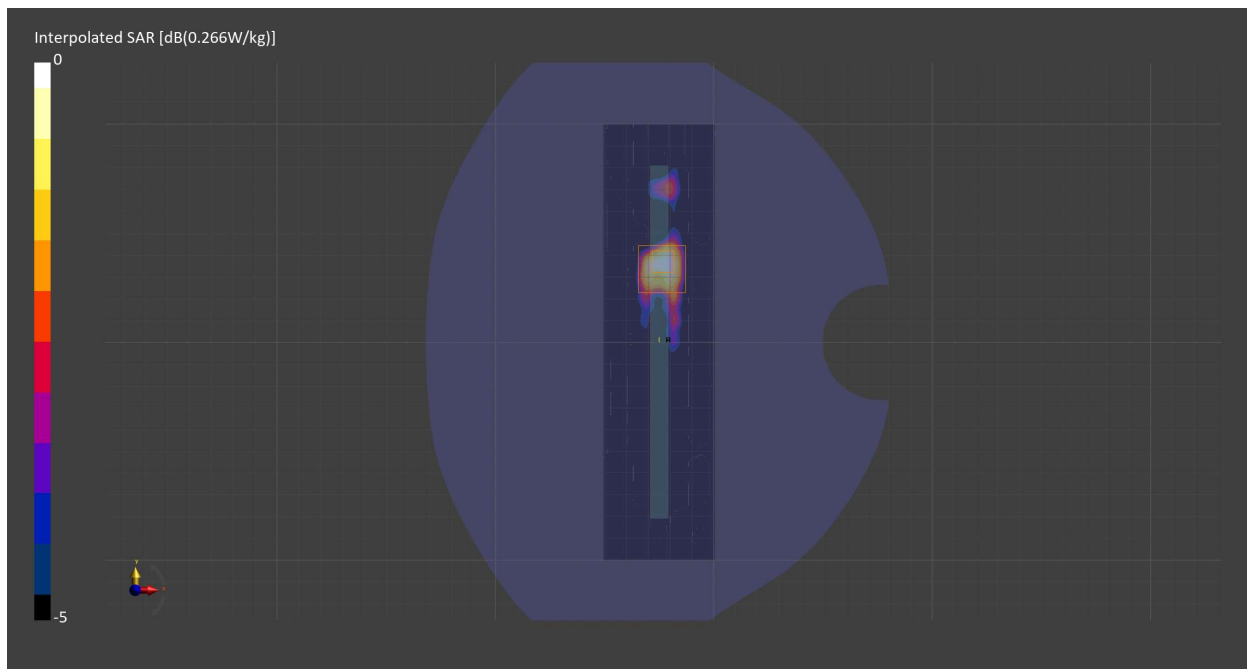
Probe Calibration Date	EX3DV4 - SN7709 2023-11-30	Phantom	Twin-SAM V8.0 (30deg probe tilt) - SN1742
DAE Calibration Date	DAE4 Sn1714 2023-11-22	TSL Meas. Date	HBBL-600-10000 2024-Mar-04

Scans Setup

	Area Scan	Zoom Scan
Grid Extents [mm]	51.0 x 200.0	22.0 x 22.0 x 22.0
Grid Steps [mm]	8.5 x 10.0	4.0 x 4.0 x 1.4
Sensor Surface [mm]	3.0	1.4
Graded Grid	N/A	Yes
M2/M1 [%]		63.9
Dist 3dB Peak [mm]		7.6

Measurement Results

	Area Scan	Zoom Scan
psSAR1g [W/Kg]	0.061	0.066
psSAR10g [W/Kg]	0.023	0.019
Power Drift [dB]	-0.27	0.06



Measurement Report for WLAN 5GHz, BACK, Normal, WiFi Chain 1

Exposure Conditions

Band	WLAN 5GHz	TSL Permittivity	34.0
Frequency [MHz] Channel Number	5755.000 151	TSL Conductivity [S/m]	5.15
Group UID	WLAN 10114-CAD	Phantom Section TSL	Flat HSL
Conversion Factor	5.26	Test Distance [mm]	10.00
Communication Configuration	IEEE 802.11n (HT Greenfield, 13.5 Mbps, BPSK)		

Hardware Setup

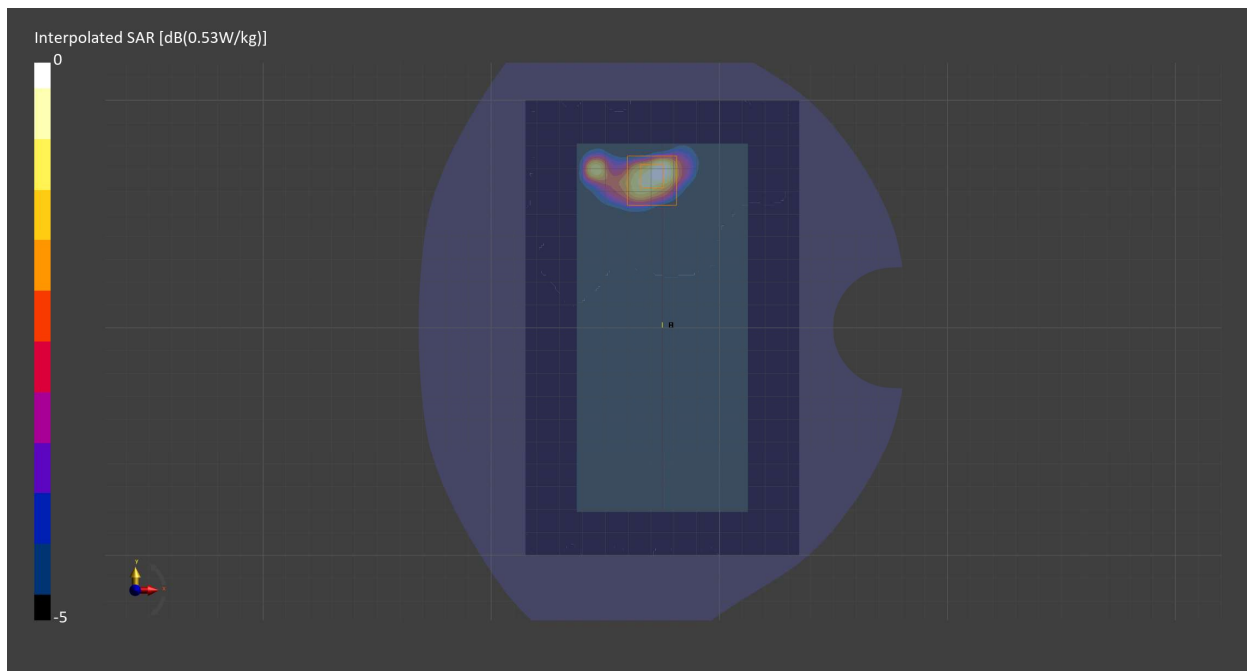
Probe Calibration Date	EX3DV4 - SN7709 2023-11-30	Phantom	Twin-SAM V8.0 (30deg probe tilt) - SN1742
DAE Calibration Date	DAE4 Sn1714 2023-11-22	TSL Meas. Date	HBBL-600-10000 2024-Feb-26

Scans Setup

	Area Scan	Zoom Scan
Grid Extents [mm]	120.0 x 200.0	22.0 x 22.0 x 22.0
Grid Steps [mm]	10.0 x 10.0	4.0 x 4.0 x 1.4
Sensor Surface [mm]	3.0	1.4
Graded Grid	N/A	Yes
M2/M1 [%]		59.6
Dist 3dB Peak [mm]		6.3

Measurement Results

	Area Scan	Zoom Scan
psSAR1g [W/Kg]	0.112	0.127
psSAR10g [W/Kg]	0.041	0.035
Power Drift [dB]	0.09	0.00



Measurement Report for WLAN 5GHz, BACK, Simul, WiFi Chain 1

Exposure Conditions

Band	WLAN 5GHz	TSL Permittivity	34.0
Frequency [MHz] Channel Number	5795.000 159	TSL Conductivity [S/m]	5.16
Group UID	WLAN 10114-CAD	Phantom Section TSL	Flat HSL
Conversion Factor	5.26	Test Distance [mm]	10.00
Communication Configuration	IEEE 802.11n (HT Greenfield, 13.5 Mbps, BPSK)		

Hardware Setup

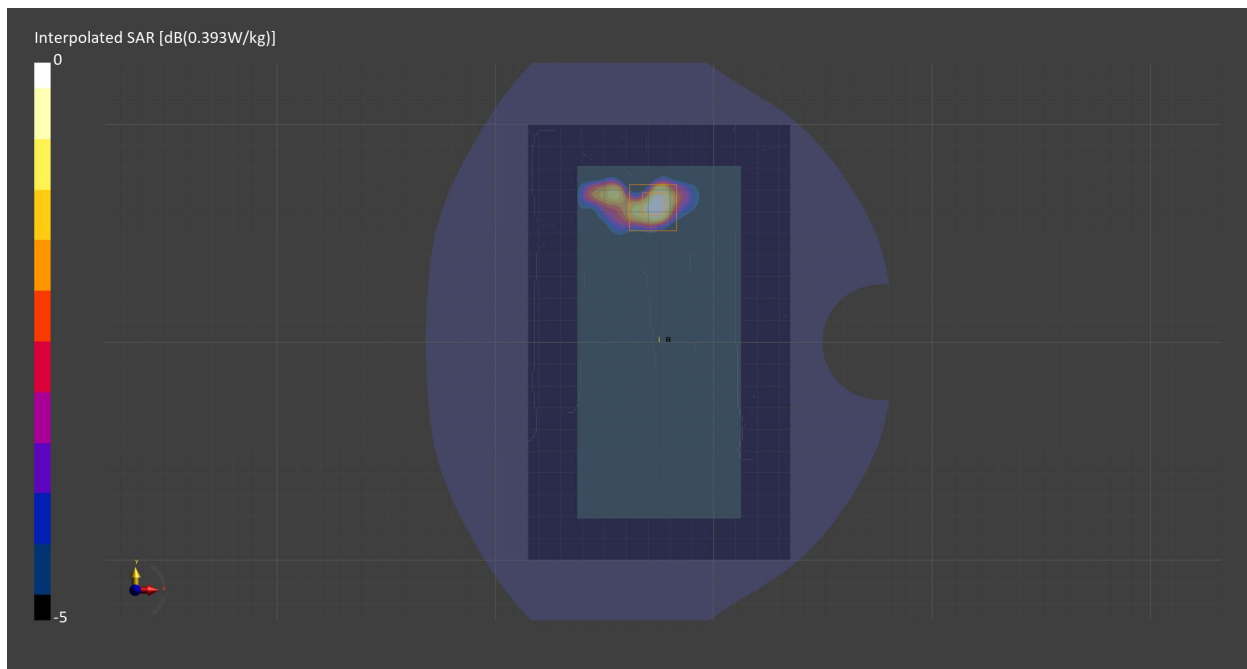
Probe Calibration Date	EX3DV4 - SN7709 2023-11-30	Phantom	Twin-SAM V8.0 (30deg probe tilt) - SN1742
DAE Calibration Date	DAE4 Sn1714 2023-11-22	TSL Meas. Date	HBBL-600-10000 2024-Mar-04

Scans Setup

	Area Scan	Zoom Scan
Grid Extents [mm]	120.0 x 200.0	22.0 x 22.0 x 22.0
Grid Steps [mm]	10.0 x 10.0	4.0 x 4.0 x 1.4
Sensor Surface [mm]	3.0	1.4
Graded Grid	N/A	Yes
M2/M1 [%]		64.4
Dist 3dB Peak [mm]		6.5

Measurement Results

	Area Scan	Zoom Scan
psSAR1g [W/Kg]	0.087	0.093
psSAR10g [W/Kg]	0.030	0.024
Power Drift [dB]	-0.19	-0.61



Measurement Report for ISM 2.4 GHz Band, CHEEK, Normal, Bluetooth Chain 0

Exposure Conditions

Band	ISM 2.4 GHz Band	TSL Permittivity	41.0
Frequency [MHz] Channel Number	2480.000 78	TSL Conductivity [S/m]	1.87
Group UID	Bluetooth 10032-CAA	Phantom Section TSL	RightHead HSL
Conversion Factor	7.89	Test Distance [mm]	0.00
Communication Configuration	IEEE 802.15.1 Bluetooth (GFSK, DH5)		

Hardware Setup

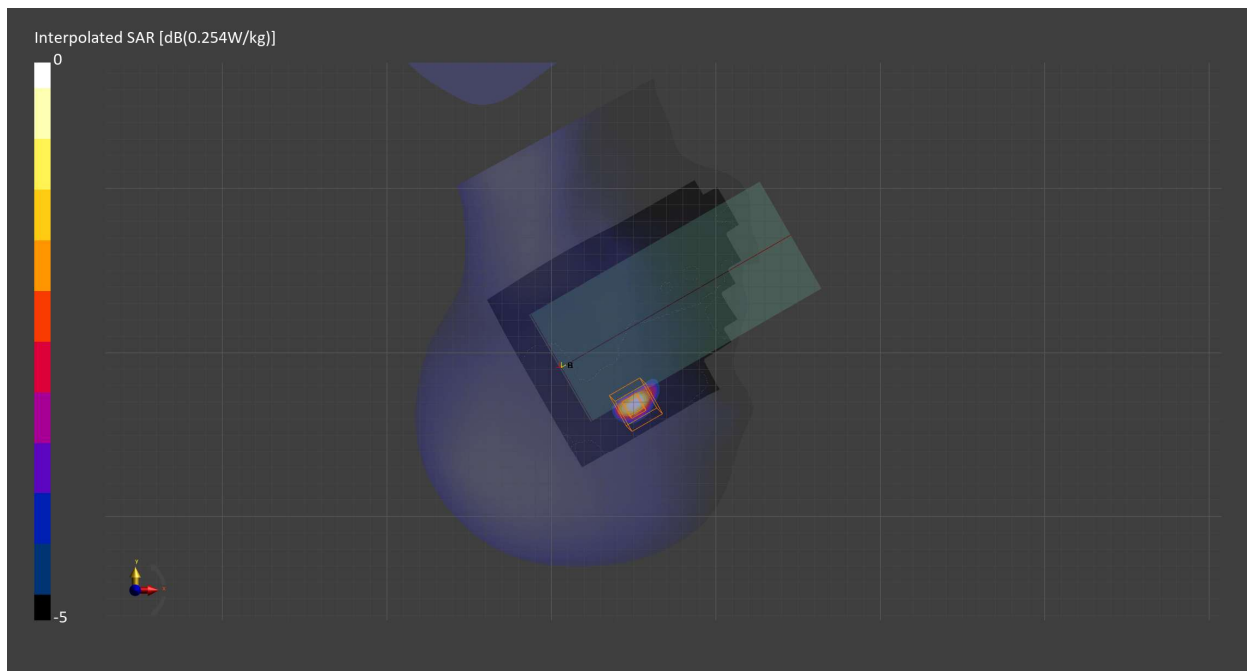
Probe Calibration Date	EX3DV4 - SN7710 2024-01-16	Phantom	Twin-SAM V8.0 (30deg probe tilt) - SN2082
DAE Calibration Date	DAE4 Sn1357 2024-01-09	TSL Meas. Date	HBBL600-10000V6 2024-Feb-26

Scans Setup

	Area Scan	Zoom Scan
Grid Extents [mm]	120.0 x 200.0	30.0 x 30.0 x 30.0
Grid Steps [mm]	10.0 x 10.0	3.8 x 3.8 x 1.4
Sensor Surface [mm]	3.0	1.4
Graded Grid	N/A	Yes
M2/M1 [%]		75.1
Dist 3dB Peak [mm]		5.5

Measurement Results

	Area Scan	Zoom Scan
psSAR1g [W/Kg]	0.183	0.197
psSAR10g [W/Kg]	0.073	0.072
Power Drift [dB]	-0.14	0.02



Measurement Report for ISM 2.4 GHz Band, FRONT, Normal, Bluetooth Chain 0

Exposure Conditions

Band	ISM 2.4 GHz Band	TSL Permittivity	41.0
Frequency [MHz] Channel Number	2480.000 78	TSL Conductivity [S/m]	1.87
Group UID	Bluetooth 10032-CAA	Phantom Section TSL	Flat HSL
Conversion Factor	7.89	Test Distance [mm]	10.00
Communication Configuration	IEEE 802.15.1 Bluetooth (GFSK, DH5)		

Hardware Setup

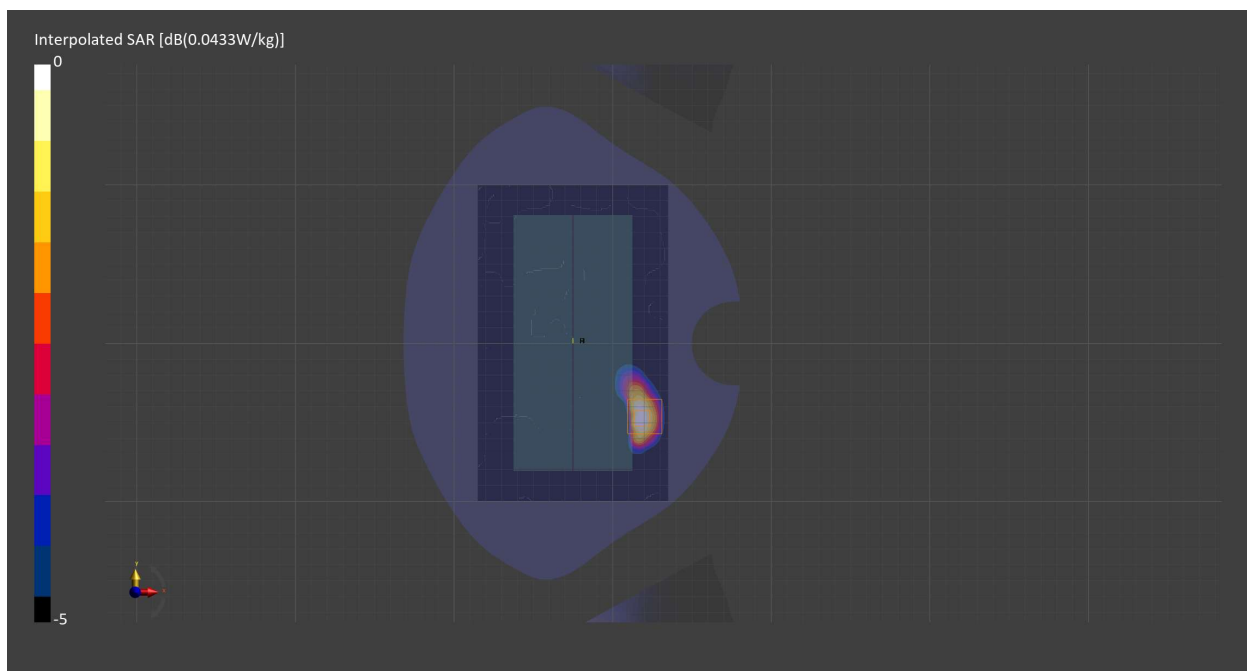
Probe Calibration Date	EX3DV4 - SN7710 2024-01-16	Phantom	Twin-SAM V8.0 (30deg probe tilt) - SN2082
DAE Calibration Date	DAE4 Sn1357 2024-01-09	TSL Meas. Date	HBBL600-10000V6 2024-Feb-26

Scans Setup

	Area Scan	Zoom Scan
Grid Extents [mm]	120.0 x 200.0	30.0 x 30.0 x 30.0
Grid Steps [mm]	10.0 x 10.0	5.0 x 5.0 x 1.5
Sensor Surface [mm]	3.0	1.4
Graded Grid	N/A	Yes
M2/M1 [%]		83.5
Dist 3dB Peak [mm]		8.0

Measurement Results

	Area Scan	Zoom Scan
psSAR1g [W/Kg]	0.034	0.035
psSAR10g [W/Kg]	0.016	0.016
Power Drift [dB]	-0.00	-0.08



Measurement Report for ISM 2.4 GHz Band, EDGE LEFT, Normal, Bluetooth Chain 0

Exposure Conditions

Band	ISM 2.4 GHz Band	TSL Permittivity	41.0
Frequency [MHz] Channel Number	2480.000 78	TSL Conductivity [S/m]	1.87
Group UID	Bluetooth 10032-CAA	Phantom Section TSL	Flat HSL
Conversion Factor	7.89	Test Distance [mm]	10.00
Communication Configuration	IEEE 802.15.1 Bluetooth (GFSK, DH5)		

Hardware Setup

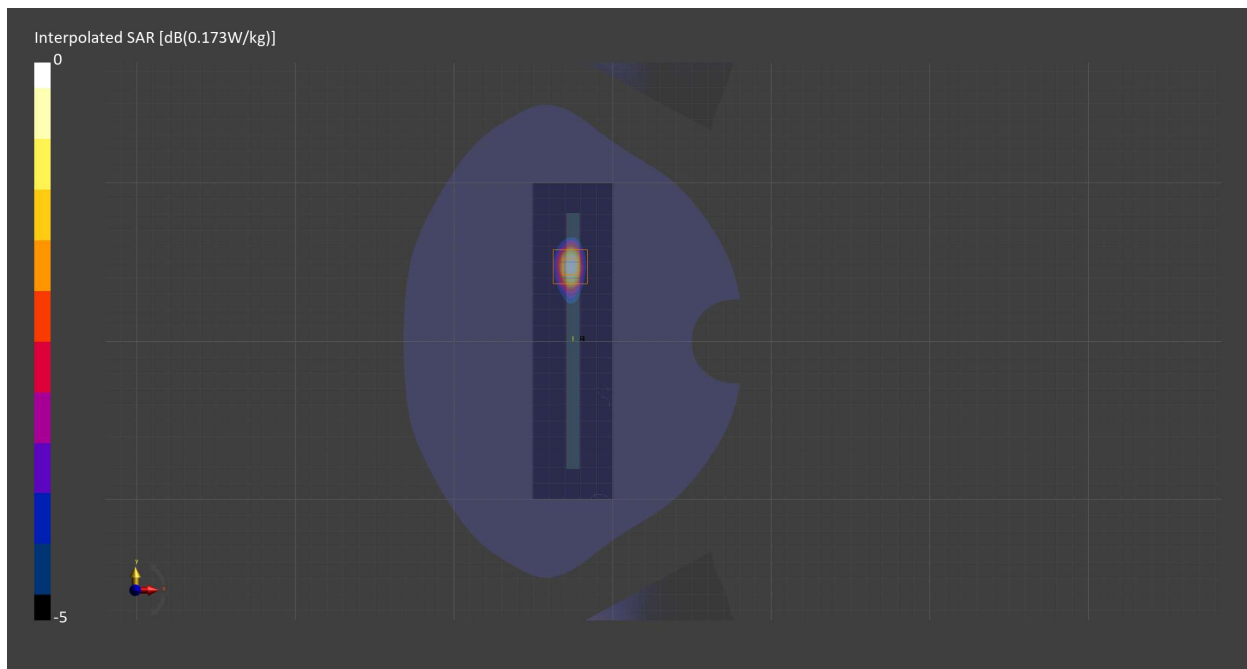
Probe Calibration Date	EX3DV4 - SN7710 2024-01-16	Phantom	Twin-SAM V8.0 (30deg probe tilt) - SN2082
DAE Calibration Date	DAE4 Sn1357 2024-01-09	TSL Meas. Date	HBBL600-10000V6 2024-Feb-26

Scans Setup

	Area Scan	Zoom Scan
Grid Extents [mm]	51.0 x 200.0	30.0 x 30.0 x 30.0
Grid Steps [mm]	8.5 x 10.0	5.0 x 5.0 x 1.5
Sensor Surface [mm]	3.0	1.4
Graded Grid	N/A	Yes
M2/M1 [%]		81.4
Dist 3dB Peak [mm]		8.0

Measurement Results

	Area Scan	Zoom Scan
psSAR1g [W/Kg]	0.127	0.127
psSAR10g [W/Kg]	0.055	0.056
Power Drift [dB]	0.01	-0.02



Measurement Report for ISM 2.4 GHz Band, BACK, Normal, Bluetooth Chain 1

Exposure Conditions

Band	ISM 2.4 GHz Band	TSL Permittivity	41.0
Frequency [MHz] Channel Number	2441.000 39	TSL Conductivity [S/m]	1.84
Group UID	Bluetooth 10032-CAA	Phantom Section TSL	Flat HSL
Conversion Factor	7.89	Test Distance [mm]	10.00
Communication Configuration	IEEE 802.15.1 Bluetooth (GFSK, DH5)		

Hardware Setup

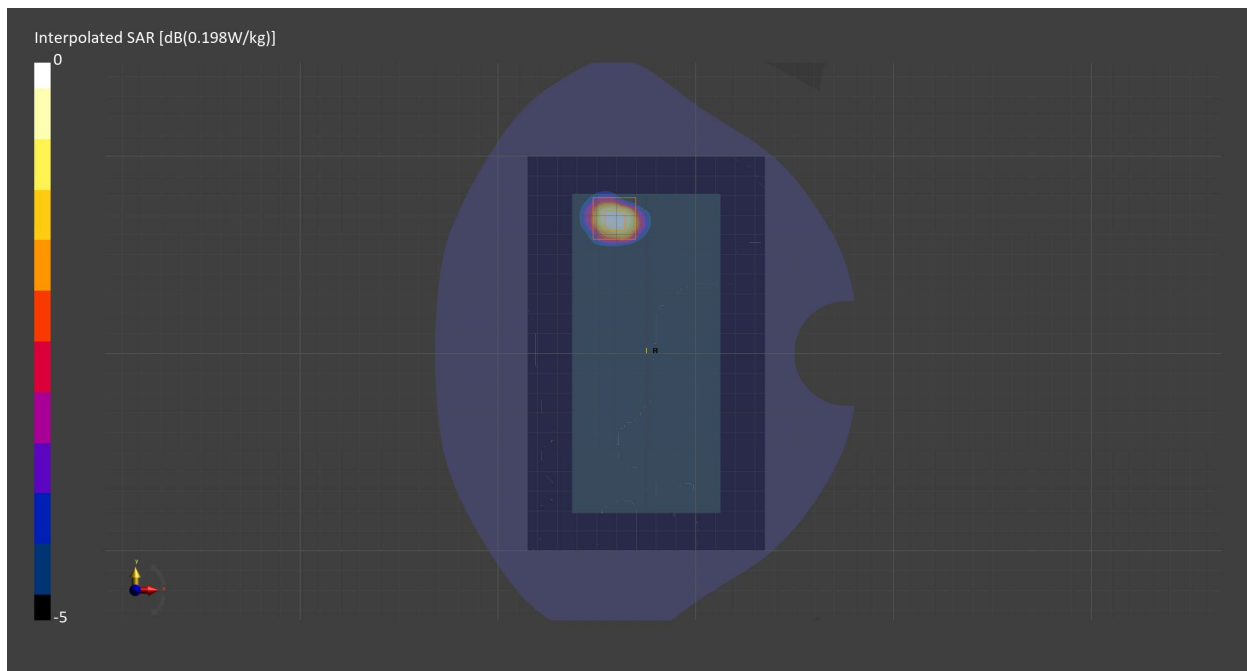
Probe Calibration Date	EX3DV4 - SN7710 2024-01-16	Phantom	Twin-SAM V8.0 (30deg probe tilt) - SN2082
DAE Calibration Date	DAE4 Sn1357 2024-01-09	TSL Meas. Date	HBBL600-10000V6 2024-Feb-26

Scans Setup

	Area Scan	Zoom Scan
Grid Extents [mm]	120.0 x 200.0	30.0 x 30.0 x 30.0
Grid Steps [mm]	10.0 x 10.0	5.0 x 5.0 x 1.5
Sensor Surface [mm]	3.0	1.4
Graded Grid	N/A	Yes
M2/M1 [%]		79.0
Dist 3dB Peak [mm]		8.3

Measurement Results

	Area Scan	Zoom Scan
psSAR1g [W/Kg]	0.156	0.162
psSAR10g [W/Kg]	0.074	0.072
Power Drift [dB]	-0.00	0.01



Measurement Report for Custom Band, BACK, Normal, NFC

Exposure Conditions

Band	Custom Band	TSL Permittivity	54.3
Frequency [MHz] Channel Number	13.500 13500	TSL Conductivity [S/m]	0.746
Group UID	CW 0--	Phantom Section TSL	Flat HSL
Conversion Factor	16.02	Test Distance [mm]	0.00
Communication Configuration			CW

Hardware Setup

Probe Calibration Date	EX3DV4 - SN7710 2024-01-16	Phantom	ELI V8.0 (20deg probe tilt) - SN2081
DAE Calibration Date	DAE4 Sn1715 2024-02-12	TSL Meas. Date	HBBL600-10000V6 2024-Feb-29

Scans Setup

	Area Scan	Zoom Scan
Grid Extents [mm]	120.0 x 210.0	30.0 x 30.0 x 30.0
Grid Steps [mm]	15.0 x 15.0	2.5 x 2.5 x 1.2
Sensor Surface [mm]	3.0	1.4
Graded Grid	N/A	Yes
M2/M1 [%]		55.4
Dist 3dB Peak [mm]		3.5

Measurement Results

	Area Scan	Zoom Scan
psSAR1g [W/Kg]	0.035	0.039
psSAR10g [W/Kg]	0.023	0.013
Power Drift [dB]	N/A	1.77

