

# Measurement Report for GSM 850, CHEEK, Normal, CELL Main1

## Exposure Conditions

Band	GSM 850	TSL Permittivity	41.6
Frequency [MHz]   Channel Number	836.600   190	TSL Conductivity [S/m]	0.906
Group   UID	GSM   10028-DAC	Phantom Section   TSL	LeftHead   HSL
Conversion Factor	9.15	Test Distance [mm]	0.00
Communication Configuration	GPRS-FDD (TDMA, GMSK, TN 0-1-2-3)		

## Hardware Setup

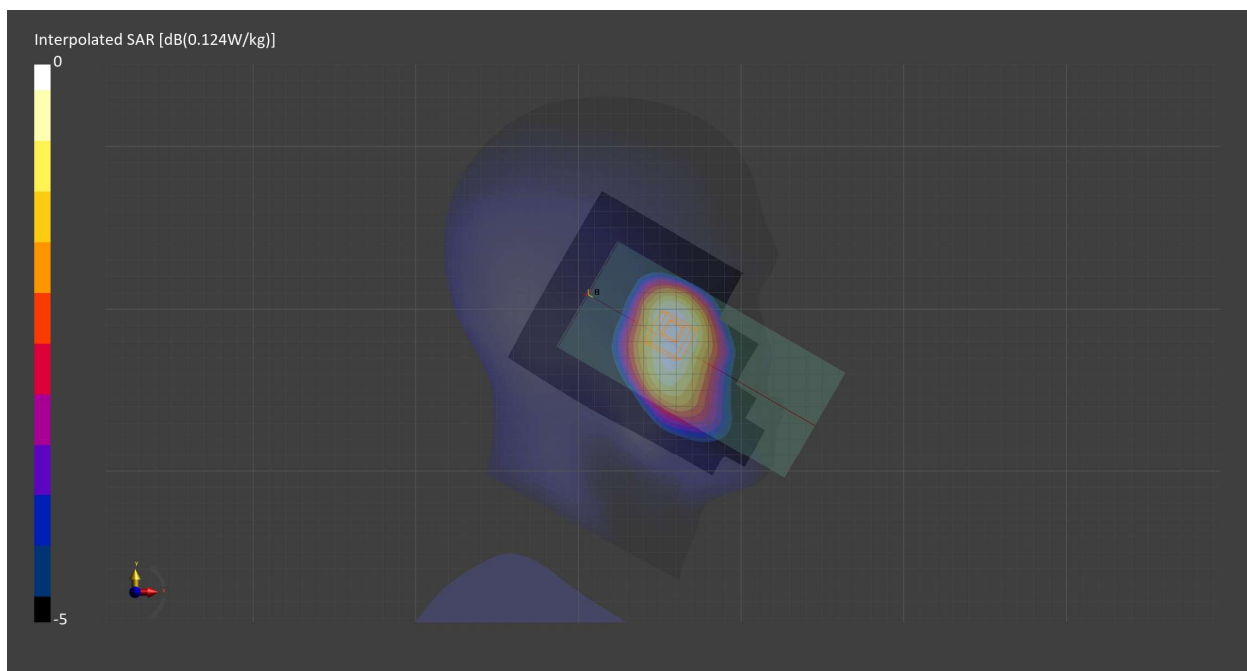
Probe   Calibration Date	EX3DV4 - SN7709   2023-11-30	Phantom	Twin-SAM V8.0 (30deg probe tilt) - SN1742
DAE   Calibration Date	DAE4 Sn1714   2023-11-22	TSL   Meas. Date	HBBL-600-10000   2024-Feb-19

## Scans Setup

	Area Scan	Zoom Scan
Grid Extents [mm]	120.0 x 210.0	30.0 x 30.0 x 30.0
Grid Steps [mm]	15.0 x 15.0	6.0 x 6.0 x 1.5
Sensor Surface [mm]	3.0	1.4
Graded Grid	N/A	Yes
M2/M1 [%]		94.7
Dist 3dB Peak [mm]		> 15.0

## Measurement Results

	Area Scan	Zoom Scan
psSAR1g [W/Kg]	0.104	<b>0.112</b>
psSAR10g [W/Kg]	0.073	<b>0.090</b>
Power Drift [dB]	N/A	0.00



# Measurement Report for GSM 850, BACK, Normal, CELL Main1

## Exposure Conditions

Band	GSM 850	TSL Permittivity	41.6
Frequency [MHz]   Channel Number	836.600   190	TSL Conductivity [S/m]	0.906
Group   UID	GSM   10028-DAC	Phantom Section   TSL	Flat   HSL
Conversion Factor	9.15	Test Distance [mm]	10.00
Communication Configuration	GPRS-FDD (TDMA, GMSK, TN 0-1-2-3)		

## Hardware Setup

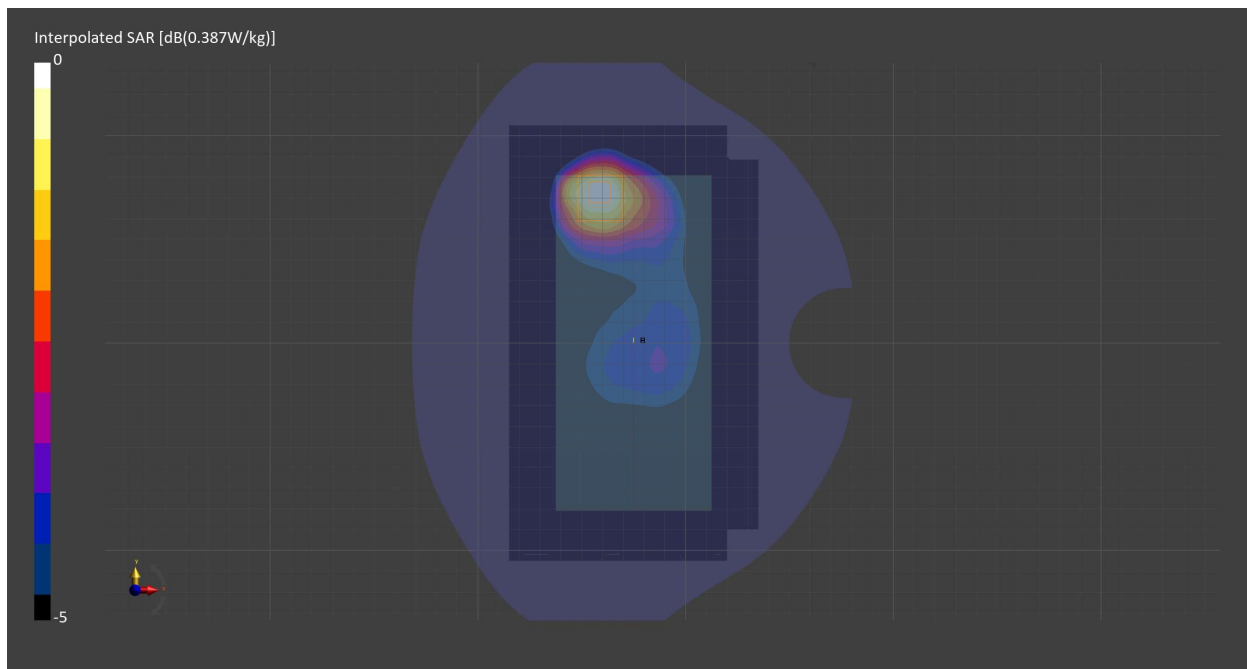
Probe   Calibration Date	EX3DV4 - SN7709   2023-11-30	Phantom	Twin-SAM V8.0 (30deg probe tilt) - SN1742
DAE   Calibration Date	DAE4 Sn1714   2023-11-22	TSL   Meas. Date	HBBL-600-10000   2024-Feb-19

## Scans Setup

	Area Scan	Zoom Scan
Grid Extents [mm]	120.0 x 210.0	30.0 x 30.0 x 30.0
Grid Steps [mm]	15.0 x 15.0	6.0 x 6.0 x 1.5
Sensor Surface [mm]	3.0	1.4
Graded Grid	N/A	Yes
M2/M1 [%]		88.5
Dist 3dB Peak [mm]		15.6

## Measurement Results

	Area Scan	Zoom Scan
psSAR1g [W/Kg]	0.263	<b>0.249</b>
psSAR10g [W/Kg]	0.170	<b>0.155</b>
Power Drift [dB]	N/A	-0.12



# Measurement Report for GSM 850, BACK, Normal, CELL Main1

## Exposure Conditions

Band	GSM 850	TSL Permittivity	41.6
Frequency [MHz]   Channel Number	836.600   190	TSL Conductivity [S/m]	0.906
Group   UID	GSM   10024-DAC	Phantom Section   TSL	Flat   HSL
Conversion Factor	9.15	Test Distance [mm]	10.00
Communication Configuration	GPRS-FDD (TDMA, GMSK, TN 0-1)		

## Hardware Setup

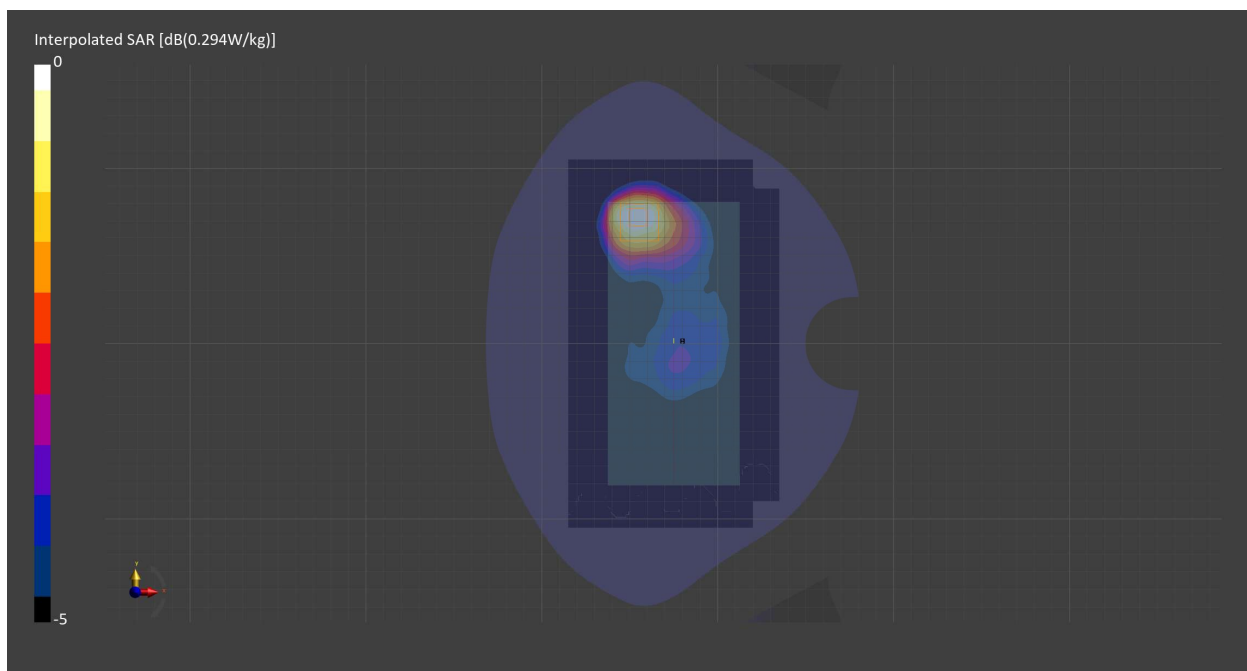
Probe   Calibration Date	EX3DV4 - SN7709   2023-11-30	Phantom	Twin-SAM V8.0 (30deg probe tilt) - SN1742
DAE   Calibration Date	DAE4 Sn1714   2023-11-22	TSL   Meas. Date	HBBL-600-10000   2024-Feb-19

## Scans Setup

	Area Scan	Zoom Scan
Grid Extents [mm]	120.0 x 210.0	30.0 x 30.0 x 30.0
Grid Steps [mm]	15.0 x 15.0	6.0 x 6.0 x 1.5
Sensor Surface [mm]	3.0	1.4
Graded Grid	N/A	Yes
M2/M1 [%]		88.1
Dist 3dB Peak [mm]		14.4

## Measurement Results

	Area Scan	Zoom Scan
psSAR1g [W/Kg]	0.258	<b>0.249</b>
psSAR10g [W/Kg]	0.168	<b>0.154</b>
Power Drift [dB]	N/A	-0.02



# Measurement Report for PCS 1900, CHEEK, Normal, CELL Main2

## Exposure Conditions

Band	PCS 1900	TSL Permittivity	39.6
Frequency [MHz]   Channel Number	1880.000   661	TSL Conductivity [S/m]	1.43
Group   UID	GSM   10028-DAC	Phantom Section   TSL	RightHead   HSL
Conversion Factor	8.08	Test Distance [mm]	0.00
Communication Configuration	GPRS-FDD (TDMA, GMSK, TN 0-1-2-3)		

## Hardware Setup

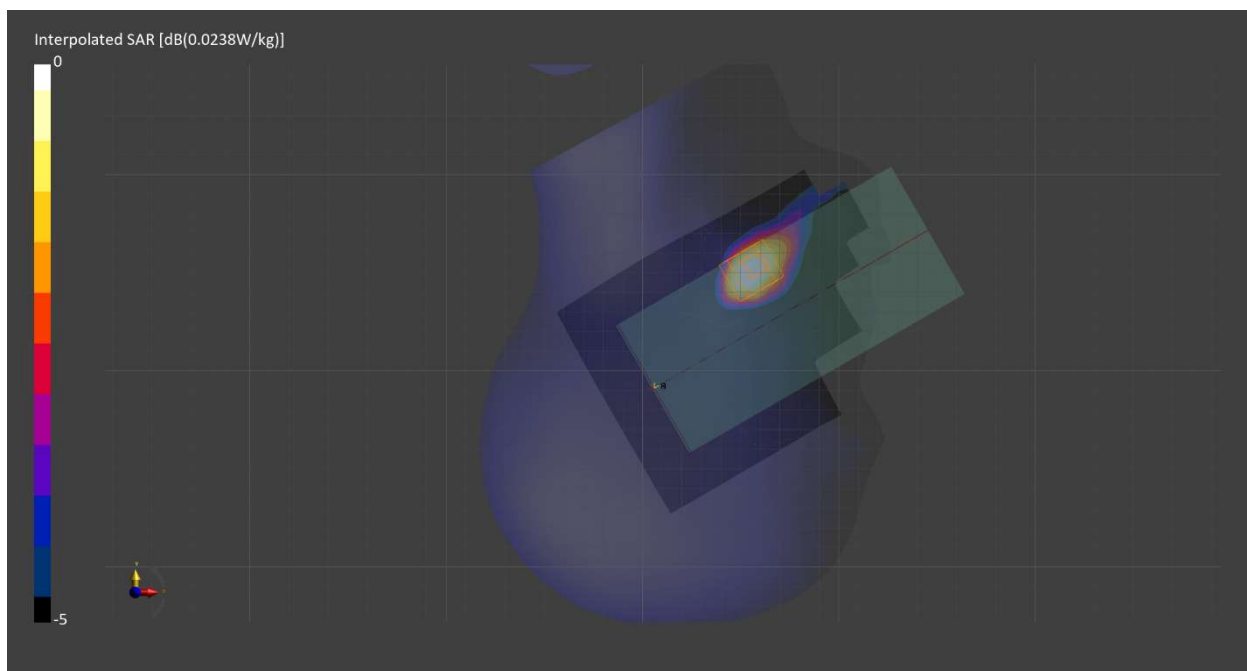
Probe   Calibration Date	EX3DV4 - SN7709   2023-11-30	Phantom	Twin-SAM V8.0 (30deg probe tilt) - SN1742
DAE   Calibration Date	DAE4 Sn1714   2023-11-22	TSL   Meas. Date	HBBL-600-10000   2024-Feb-19

## Scans Setup

	Area Scan	Zoom Scan
Grid Extents [mm]	120.0 x 210.0	30.0 x 30.0 x 30.0
Grid Steps [mm]	15.0 x 15.0	6.0 x 6.0 x 1.5
Sensor Surface [mm]	3.0	1.4
Graded Grid	N/A	Yes
M2/M1 [%]		96.6
Dist 3dB Peak [mm]		12.0

## Measurement Results

	Area Scan	Zoom Scan
psSAR1g [W/Kg]	0.016	<b>0.016</b>
psSAR10g [W/Kg]	0.009	<b>0.009</b>
Power Drift [dB]	N/A	-0.11



# Measurement Report for PCS 1900, BACK, Normal, CELL Main2

## Exposure Conditions

Band	PCS 1900	TSL Permittivity	39.6
Frequency [MHz]   Channel Number	1880.000   661	TSL Conductivity [S/m]	1.43
Group   UID	GSM   10028-DAC	Phantom Section   TSL	Flat   HSL
Conversion Factor	8.08	Test Distance [mm]	10.00
Communication Configuration	GPRS-FDD (TDMA, GMSK, TN 0-1-2-3)		

## Hardware Setup

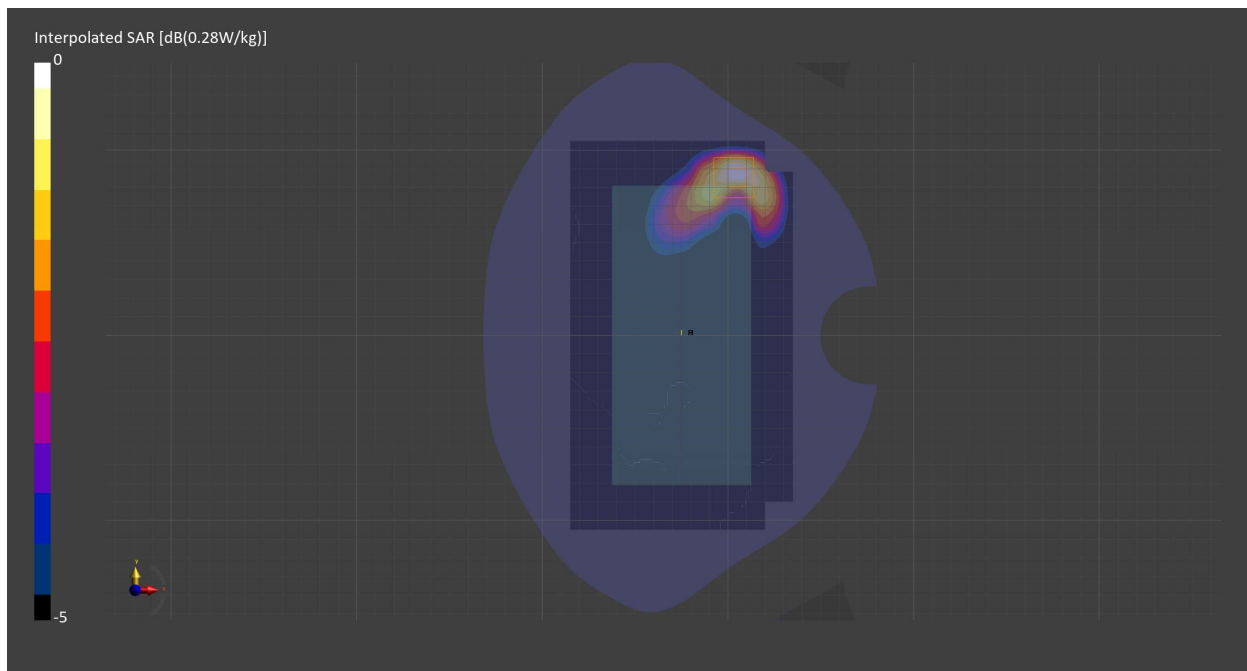
Probe   Calibration Date	EX3DV4 - SN7709   2023-11-30	Phantom	Twin-SAM V8.0 (30deg probe tilt) - SN1742
DAE   Calibration Date	DAE4 Sn1714   2023-11-22	TSL   Meas. Date	HBBL-600-10000   2024-Feb-19

## Scans Setup

	Area Scan	Zoom Scan
Grid Extents [mm]	120.0 x 210.0	30.0 x 30.0 x 30.0
Grid Steps [mm]	15.0 x 15.0	6.0 x 6.0 x 1.5
Sensor Surface [mm]	3.0	1.4
Graded Grid	N/A	Yes
M2/M1 [%]		83.3
Dist 3dB Peak [mm]		9.6

## Measurement Results

	Area Scan	Zoom Scan
psSAR1g [W/Kg]	0.141	<b>0.161</b>
psSAR10g [W/Kg]	0.080	<b>0.087</b>
Power Drift [dB]	N/A	-0.05



# Measurement Report for PCS 1900, EDGE BOTTOM, Normal, CELL Main2

## Exposure Conditions

Band	PCS 1900	TSL Permittivity	39.6
Frequency [MHz]   Channel Number	1880.000   661	TSL Conductivity [S/m]	1.43
Group   UID	GSM   10028-DAC	Phantom Section   TSL	Flat   HSL
Conversion Factor	8.08	Test Distance [mm]	10.00
Communication Configuration	GPRS-FDD (TDMA, GMSK, TN 0-1-2-3)		

## Hardware Setup

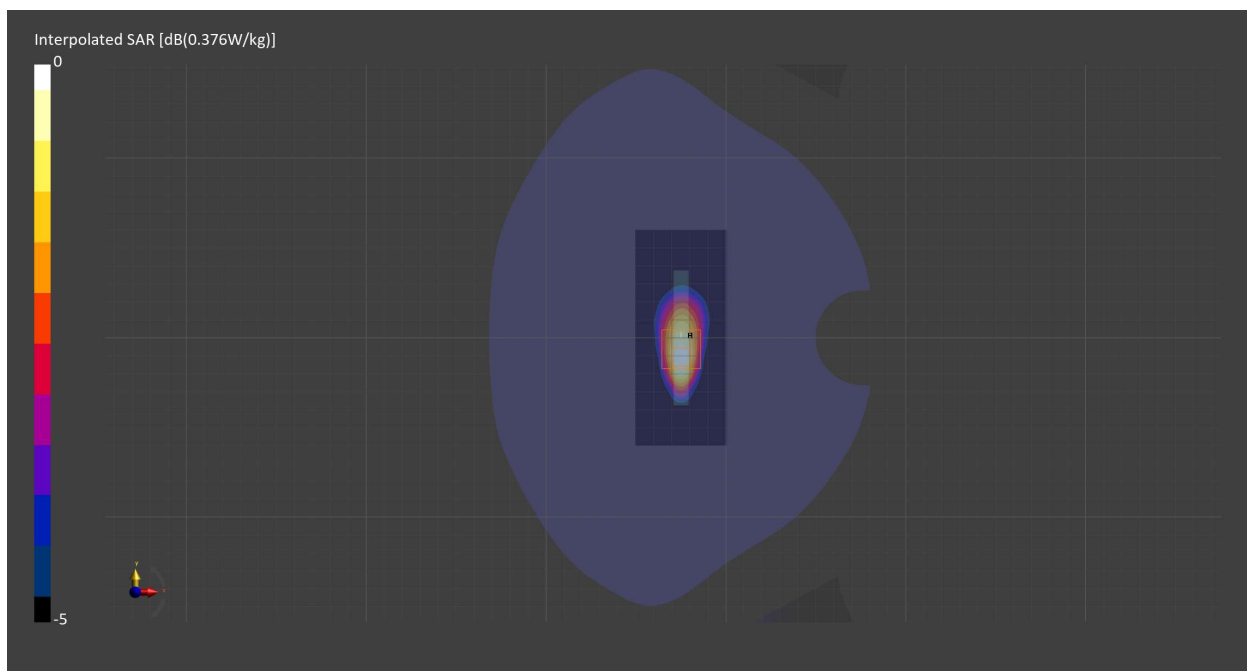
Probe   Calibration Date	EX3DV4 - SN7709   2023-11-30	Phantom	Twin-SAM V8.0 (30deg probe tilt) - SN1742
DAE   Calibration Date	DAE4 Sn1714   2023-11-22	TSL   Meas. Date	HBBL-600-10000   2024-Feb-19

## Scans Setup

	Area Scan	Zoom Scan
Grid Extents [mm]	51.0 x 120.0	30.0 x 30.0 x 30.0
Grid Steps [mm]	8.5 x 15.0	6.0 x 6.0 x 1.5
Sensor Surface [mm]	3.0	1.4
Graded Grid	N/A	Yes
M2/M1 [%]		81.8
Dist 3dB Peak [mm]		9.7

## Measurement Results

	Area Scan	Zoom Scan
psSAR1g [W/Kg]	0.214	<b>0.212</b>
psSAR10g [W/Kg]	0.115	<b>0.116</b>
Power Drift [dB]	N/A	-0.09



# Measurement Report for PCS 1900, EDGE BOTTOM, Normal, CELL Main2

## Exposure Conditions

Band	PCS 1900	TSL Permittivity	39.6
Frequency [MHz]   Channel Number	1880.000   661	TSL Conductivity [S/m]	1.43
Group   UID	GSM   10024-DAC	Phantom Section   TSL	Flat   HSL
Conversion Factor	8.08	Test Distance [mm]	10.00
Communication Configuration	GPRS-FDD (TDMA, GMSK, TN 0-1)		

## Hardware Setup

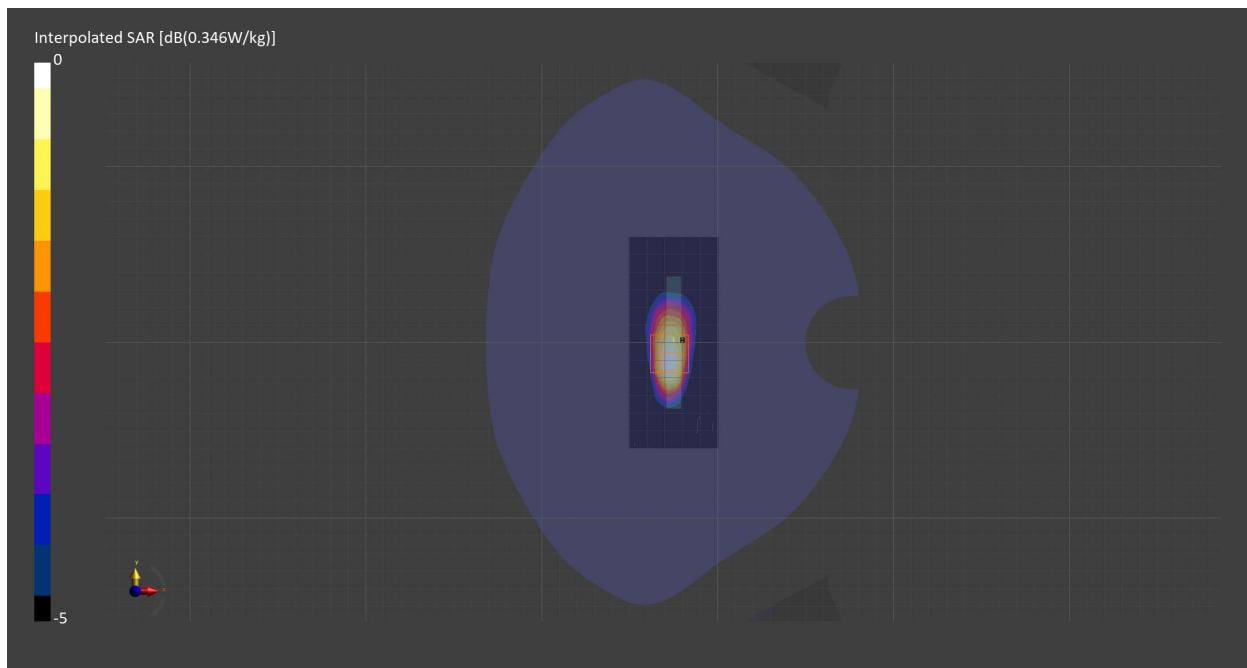
Probe   Calibration Date	EX3DV4 - SN7709   2023-11-30	Phantom	Twin-SAM V8.0 (30deg probe tilt) - SN1742
DAE   Calibration Date	DAE4 Sn1714   2023-11-22	TSL   Meas. Date	HBBL-600-10000   2024-Feb-19

## Scans Setup

	Area Scan	Zoom Scan
Grid Extents [mm]	51.0 x 120.0	30.0 x 30.0 x 30.0
Grid Steps [mm]	8.5 x 15.0	6.0 x 6.0 x 1.5
Sensor Surface [mm]	3.0	1.4
Graded Grid	N/A	Yes
M2/M1 [%]		85.3
Dist 3dB Peak [mm]		9.6

## Measurement Results

	Area Scan	Zoom Scan
psSAR1g [W/Kg]	0.188	<b>0.195</b>
psSAR10g [W/Kg]	0.102	<b>0.105</b>
Power Drift [dB]	N/A	0.02



# Measurement Report for Band 2, CHEEK, Normal, CELL Main2

## Exposure Conditions

Band	Band 2	TSL Permittivity	41.1
Frequency [MHz]   Channel Number	1852.400   9262	TSL Conductivity [S/m]	1.41
Group   UID	WCDMA   10011-CAC	Phantom Section   TSL	RightHead   HSL
Conversion Factor	8.08	Test Distance [mm]	0.00
Communication Configuration	UMTS-FDD (WCDMA)		

## Hardware Setup

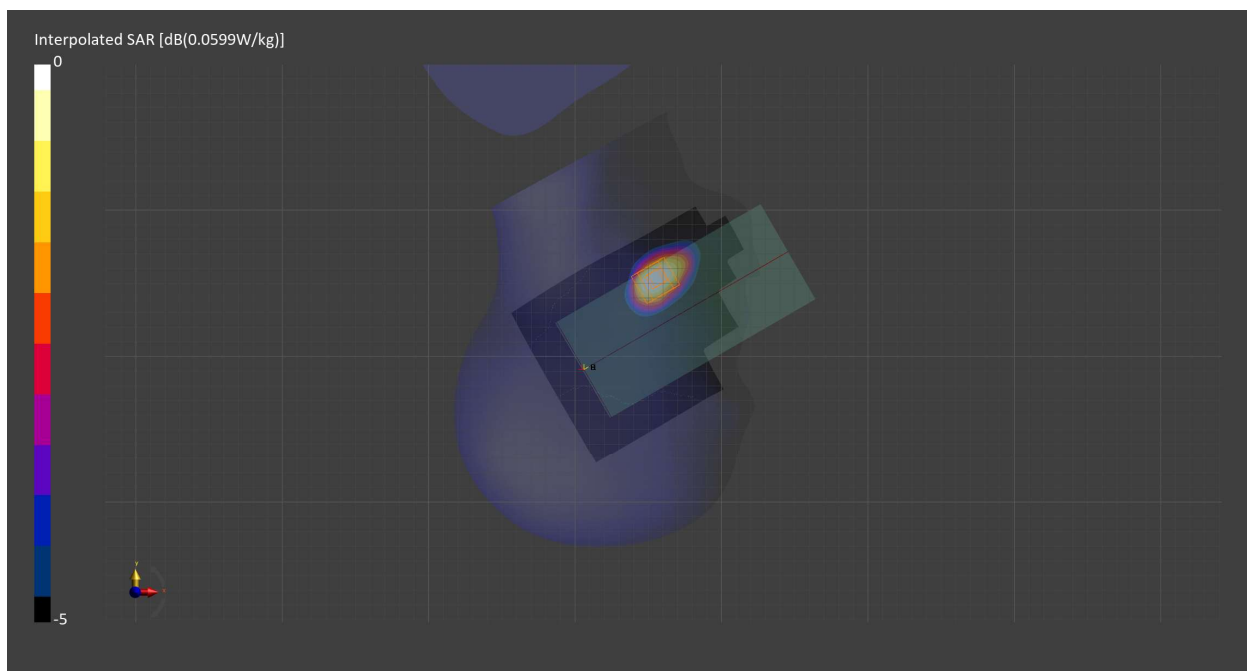
Probe   Calibration Date	EX3DV4 - SN7709   2023-11-30	Phantom	Twin-SAM V8.0 (30deg probe tilt) - SN1742
DAE   Calibration Date	DAE4 Sn1714   2023-11-22	TSL   Meas. Date	HSL900   2024-Mar-26

## Scans Setup

	Area Scan	Zoom Scan
Grid Extents [mm]	120.0 x 210.0	30.0 x 30.0 x 30.0
Grid Steps [mm]	15.0 x 15.0	6.0 x 6.0 x 1.5
Sensor Surface [mm]	3.0	1.4
Graded Grid	N/A	Yes
M2/M1 [%]		90.8
Dist 3dB Peak [mm]		13.4

## Measurement Results

	Area Scan	Zoom Scan
psSAR1g [W/Kg]	0.049	<b>0.052</b>
psSAR10g [W/Kg]	0.028	<b>0.032</b>
Power Drift [dB]	-0.05	0.03





# Measurement Report for Band 2, BACK, Normal, CELL Main2

## Exposure Conditions

Band	Band 2	TSL Permittivity	41.1
Frequency [MHz]   Channel Number	1852.400   9262	TSL Conductivity [S/m]	1.41
Group   UID	WCDMA   10011-CAC	Phantom Section   TSL	Flat   HSL
Conversion Factor	8.08	Test Distance [mm]	10.00
Communication Configuration	UMTS-FDD (WCDMA)		

## Hardware Setup

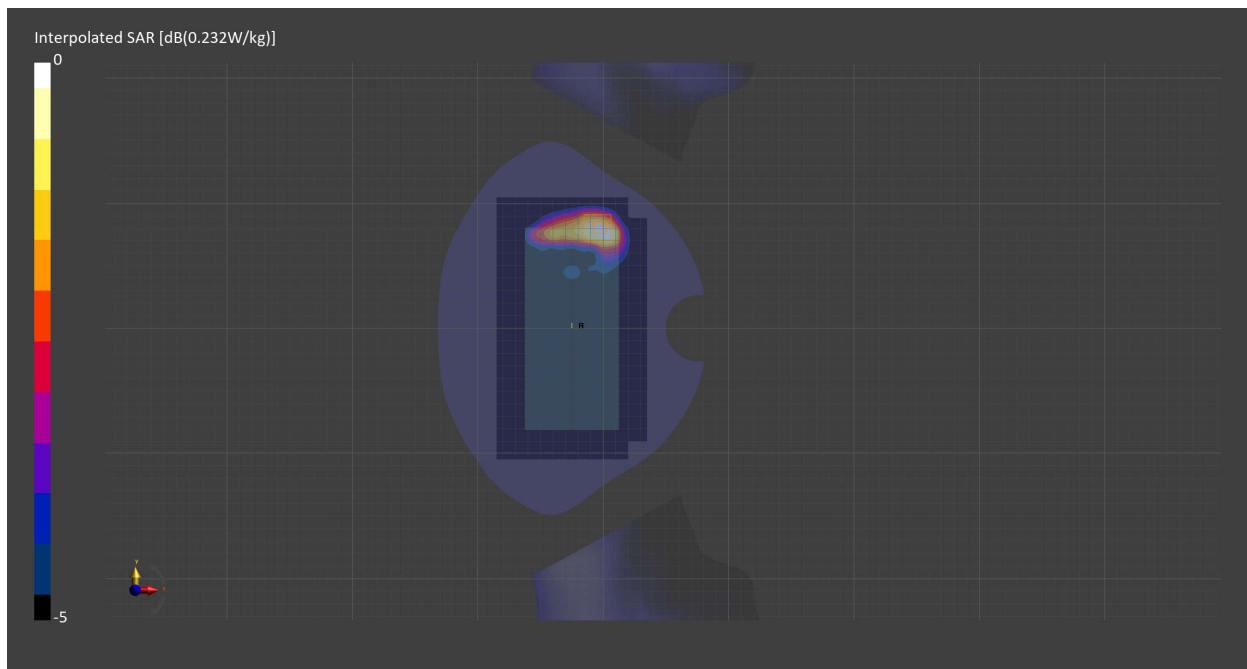
Probe   Calibration Date	EX3DV4 - SN7709   2023-11-30	Phantom	Twin-SAM V8.0 (30deg probe tilt) - SN1742
DAE   Calibration Date	DAE4 Sn1714   2023-11-22	TSL   Meas. Date	HSL900   2024-Mar-26

## Scans Setup

	Area Scan	Zoom Scan
Grid Extents [mm]	120.0 x 210.0	30.0 x 30.0 x 30.0
Grid Steps [mm]	15.0 x 15.0	6.0 x 6.0 x 1.5
Sensor Surface [mm]	3.0	1.4
Graded Grid	N/A	Yes
M2/M1 [%]		84.1
Dist 3dB Peak [mm]		10.9

## Measurement Results

	Area Scan	Zoom Scan
psSAR1g [W/Kg]	0.190	<b>0.215</b>
psSAR10g [W/Kg]	0.109	<b>0.118</b>
Power Drift [dB]	-0.00	0.00



# Measurement Report for Band 2, EDGE BOTTOM, Normal, CELL Main2

## Exposure Conditions

Band	Band 2	TSL Permittivity	41.1
Frequency [MHz]   Channel Number	1852.400   9262	TSL Conductivity [S/m]	1.41
Group   UID	WCDMA   10011-CAC	Phantom Section   TSL	Flat   HSL
Conversion Factor	8.08	Test Distance [mm]	10.00
Communication Configuration	UMTS-FDD (WCDMA)		

## Hardware Setup

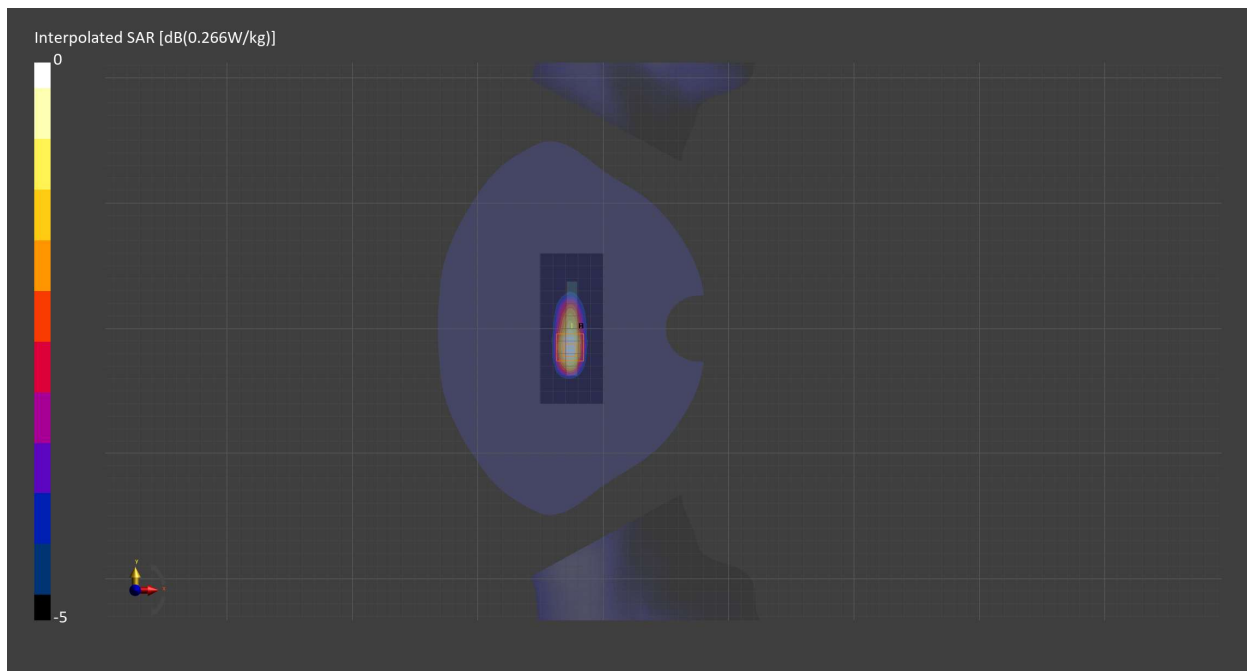
Probe   Calibration Date	EX3DV4 - SN7709   2023-11-30	Phantom	Twin-SAM V8.0 (30deg probe tilt) - SN1742
DAE   Calibration Date	DAE4 Sn1714   2023-11-22	TSL   Meas. Date	HSL900   2024-Mar-26

## Scans Setup

	Area Scan	Zoom Scan
Grid Extents [mm]	51.0 x 120.0	30.0 x 30.0 x 30.0
Grid Steps [mm]	8.5 x 15.0	6.0 x 6.0 x 1.5
Sensor Surface [mm]	3.0	1.4
Graded Grid	N/A	Yes
M2/M1 [%]		83.5
Dist 3dB Peak [mm]		10.8

## Measurement Results

	Area Scan	Zoom Scan
psSAR1g [W/Kg]	0.213	<b>0.222</b>
psSAR10g [W/Kg]	0.115	<b>0.121</b>
Power Drift [dB]	0.01	0.00



# Measurement Report for Band 4, CHEEK, Normal, CELL Main2

## Exposure Conditions

Band	Band 4	TSL Permittivity	41.1
Frequency [MHz]   Channel Number	1732.500   1762	TSL Conductivity [S/m]	1.38
Group   UID	WCDMA   10011-CAC	Phantom Section   TSL	RightHead   HSL
Conversion Factor	8.95	Test Distance [mm]	0.00
Communication Configuration	UMTS-FDD (WCDMA)		

## Hardware Setup

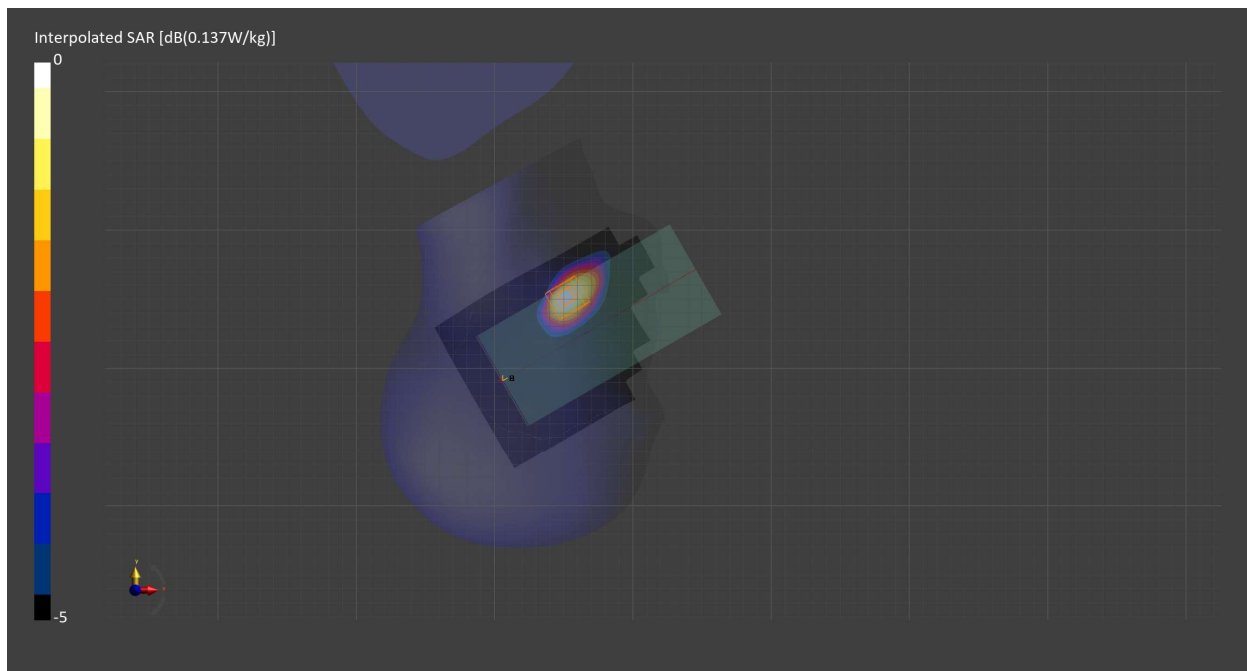
Probe   Calibration Date	EX3DV4 - SN7710   2024-01-16	Phantom	Twin-SAM V8.0 (30deg probe tilt) - SN2082
DAE   Calibration Date	DAE4 Sn1715   2024-02-12	TSL   Meas. Date	HBBL600-10000V6   2024-Mar-25

## Scans Setup

	Area Scan	Zoom Scan
Grid Extents [mm]	120.0 x 210.0	30.0 x 30.0 x 30.0
Grid Steps [mm]	15.0 x 15.0	6.0 x 6.0 x 1.5
Sensor Surface [mm]	3.0	1.4
Graded Grid	N/A	Yes
M2/M1 [%]		91.9
Dist 3dB Peak [mm]		11.1

## Measurement Results

	Area Scan	Zoom Scan
psSAR1g [W/Kg]	0.113	<b>0.116</b>
psSAR10g [W/Kg]	0.065	<b>0.075</b>
Power Drift [dB]	0.02	0.02



# Measurement Report for Band 4, BACK, Normal, CELL Main2

## Exposure Conditions

Band	Band 4	TSL Permittivity	41.1
Frequency [MHz]   Channel Number	1732.500   1762	TSL Conductivity [S/m]	1.38
Group   UID	WCDMA   10011-CAC	Phantom Section   TSL	Flat   HSL
Conversion Factor	8.95	Test Distance [mm]	10.00
Communication Configuration	UMTS-FDD (WCDMA)		

## Hardware Setup

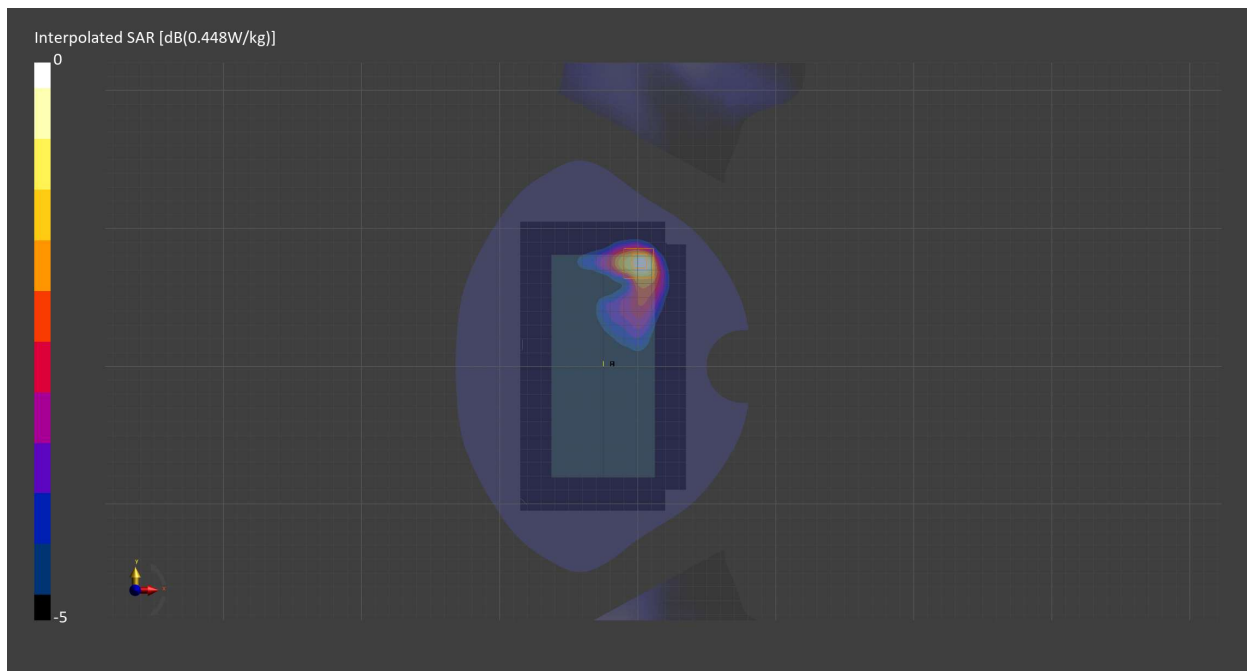
Probe   Calibration Date	EX3DV4 - SN7710   2024-01-16	Phantom	Twin-SAM V8.0 (30deg probe tilt) - SN2082
DAE   Calibration Date	DAE4 Sn1715   2024-02-12	TSL   Meas. Date	HBBL600-10000V6   2024-Mar-25

## Scans Setup

	Area Scan	Zoom Scan
Grid Extents [mm]	120.0 x 210.0	30.0 x 30.0 x 30.0
Grid Steps [mm]	15.0 x 15.0	6.0 x 6.0 x 1.5
Sensor Surface [mm]	3.0	1.4
Graded Grid	N/A	Yes
M2/M1 [%]		83.1
Dist 3dB Peak [mm]		10.8

## Measurement Results

	Area Scan	Zoom Scan
psSAR1g [W/Kg]	0.361	<b>0.362</b>
psSAR10g [W/Kg]	0.198	<b>0.199</b>
Power Drift [dB]	0.01	-0.03



# Measurement Report for Band 5, CHEEK, Normal, CELL Main1

## Exposure Conditions

Band	Band 5	TSL Permittivity	41.6
Frequency [MHz]   Channel Number	836.600   4183	TSL Conductivity [S/m]	0.906
Group   UID	WCDMA   10011-CAC	Phantom Section   TSL	LeftHead   HSL
Conversion Factor	9.15	Test Distance [mm]	0.00
Communication Configuration	UMTS-FDD (WCDMA)		

## Hardware Setup

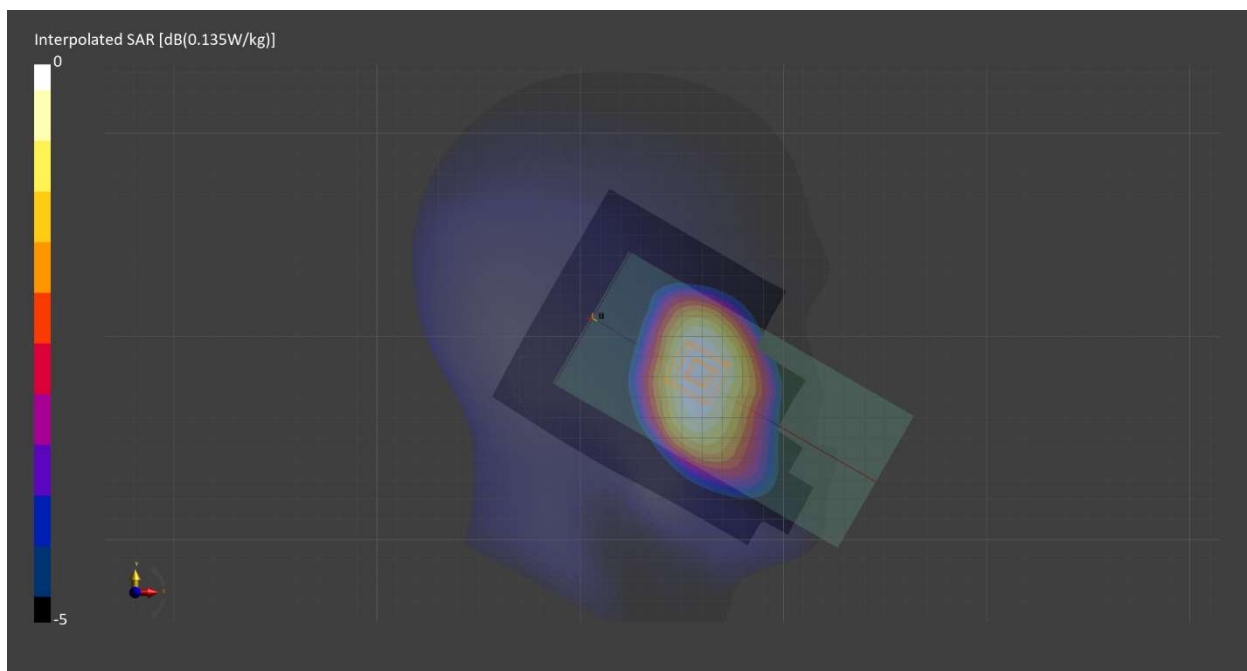
Probe   Calibration Date	EX3DV4 - SN7709   2023-11-30	Phantom	Twin-SAM V8.0 (30deg probe tilt) - SN1742
DAE   Calibration Date	DAE4 Sn1714   2023-11-22	TSL   Meas. Date	HBBL-600-10000   2024-Feb-19

## Scans Setup

	Area Scan	Zoom Scan
Grid Extents [mm]	120.0 x 210.0	30.0 x 30.0 x 30.0
Grid Steps [mm]	15.0 x 15.0	6.0 x 6.0 x 1.5
Sensor Surface [mm]	3.0	1.4
Graded Grid	N/A	Yes
M2/M1 [%]		99.5
Dist 3dB Peak [mm]		> 15.0

## Measurement Results

	Area Scan	Zoom Scan
psSAR1g [W/Kg]	0.111	<b>0.121</b>
psSAR10g [W/Kg]	0.078	<b>0.097</b>
Power Drift [dB]	N/A	-0.03



# Measurement Report for Band 5, BACK, Normal, CELL Main1

## Exposure Conditions

Band	Band 5	TSL Permittivity	41.6
Frequency [MHz]   Channel Number	836.600   4183	TSL Conductivity [S/m]	0.906
Group   UID	WCDMA   10011-CAC	Phantom Section   TSL	Flat   HSL
Conversion Factor	9.15	Test Distance [mm]	10.00
Communication Configuration	UMTS-FDD (WCDMA)		

## Hardware Setup

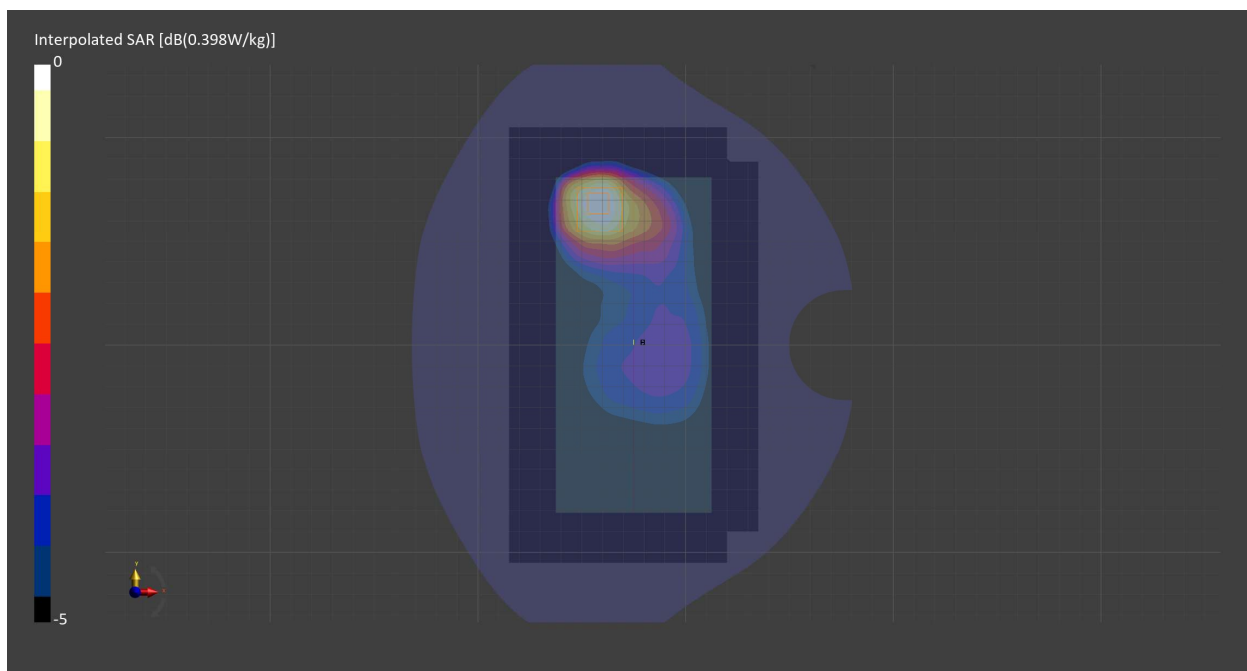
Probe   Calibration Date	EX3DV4 - SN7709   2023-11-30	Phantom	Twin-SAM V8.0 (30deg probe tilt) - SN1742
DAE   Calibration Date	DAE4 Sn1714   2023-11-22	TSL   Meas. Date	HBBL-600-10000   2024-Feb-19

## Scans Setup

	Area Scan	Zoom Scan
Grid Extents [mm]	120.0 x 210.0	30.0 x 30.0 x 30.0
Grid Steps [mm]	15.0 x 15.0	6.0 x 6.0 x 1.5
Sensor Surface [mm]	3.0	1.4
Graded Grid	N/A	Yes
M2/M1 [%]		88.6
Dist 3dB Peak [mm]		15.6

## Measurement Results

	Area Scan	Zoom Scan
psSAR1g [W/Kg]	0.258	<b>0.255</b>
psSAR10g [W/Kg]	0.169	<b>0.158</b>
Power Drift [dB]	N/A	-0.03



# Measurement Report for Band 2, TILT, Normal, CELL Main2

## Exposure Conditions

Band	Band 2	TSL Permittivity	41.1
Frequency [MHz]   Channel Number	1880.000   18900	TSL Conductivity [S/m]	1.43
Group   UID	LTE-FDD   10297-AAE	Phantom Section   TSL	LeftHead   HSL
Conversion Factor	8.08	Test Distance [mm]	0.00
Communication Configuration	LTE-FDD (SC-FDMA, 50% RB, 20 MHz, QPSK) RBPosition:High AntennaCfg:SISO		

## Hardware Setup

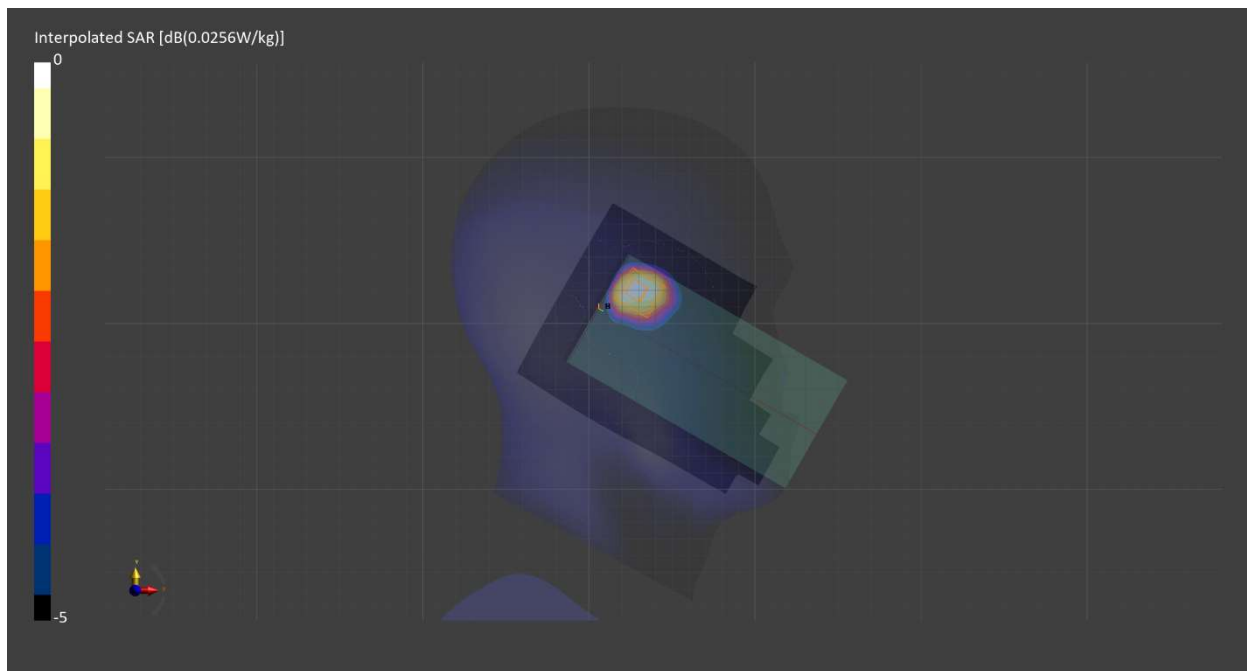
Probe   Calibration Date	EX3DV4 - SN7709   2023-11-30	Phantom	Twin-SAM V8.0 (30deg probe tilt) - SN1742
DAE   Calibration Date	DAE4 Sn1714   2023-11-22	TSL   Meas. Date	HSL900   2024-Mar-26

## Scans Setup

	Area Scan	Zoom Scan
Grid Extents [mm]	120.0 x 210.0	30.0 x 30.0 x 30.0
Grid Steps [mm]	15.0 x 15.0	6.0 x 6.0 x 1.5
Sensor Surface [mm]	3.0	1.4
Graded Grid	N/A	Yes
M2/M1 [%]		90.2
Dist 3dB Peak [mm]		7.7

## Measurement Results

	Area Scan	Zoom Scan
psSAR1g [W/Kg]	0.020	<b>0.023</b>
psSAR10g [W/Kg]	0.012	<b>0.013</b>
Power Drift [dB]	0.08	-0.06



# Measurement Report for Band 2, FRONT, Normal, CELL Main2

## Exposure Conditions

Band	Band 2	TSL Permittivity	41.1
Frequency [MHz]   Channel Number	1880.000   18900	TSL Conductivity [S/m]	1.43
Group   UID	LTE-FDD   10297-AAE	Phantom Section   TSL	Flat   HSL
Conversion Factor	8.08	Test Distance [mm]	10.00
Communication Configuration	LTE-FDD (SC-FDMA, 50% RB, 20 MHz, QPSK) RBPosition:High AntennaCfg:SISO		

## Hardware Setup

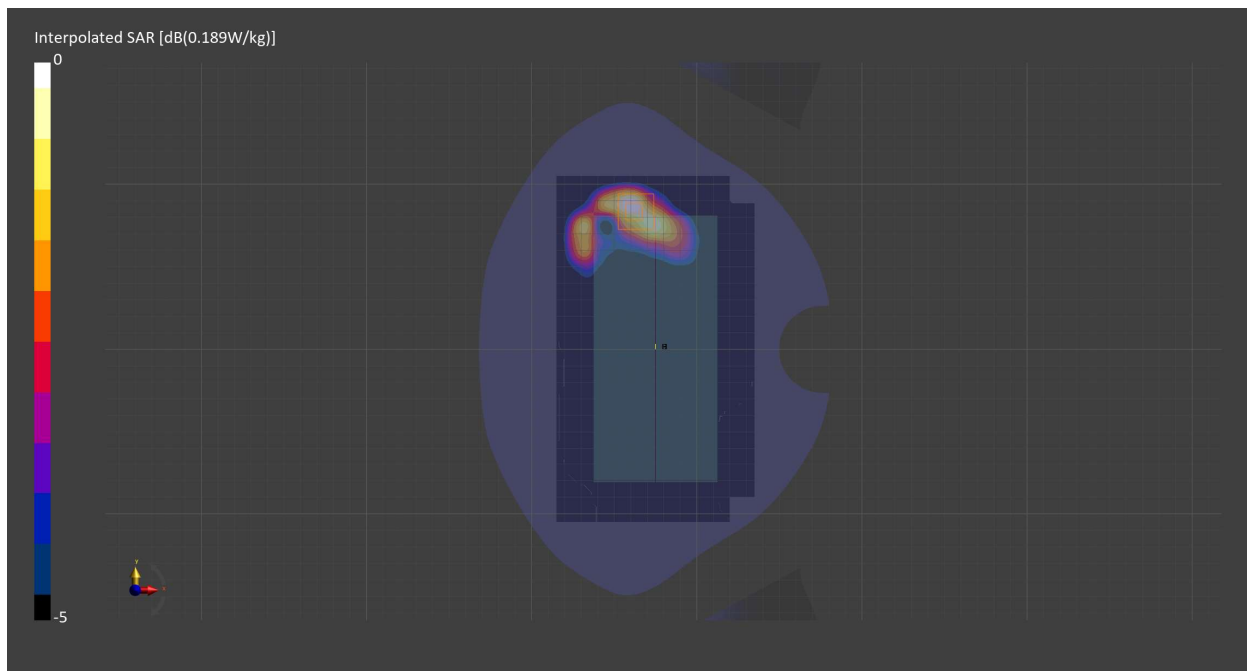
Probe   Calibration Date	EX3DV4 - SN7709   2023-11-30	Phantom	Twin-SAM V8.0 (30deg probe tilt) - SN1742
DAE   Calibration Date	DAE4 Sn1714   2023-11-22	TSL   Meas. Date	HSL900   2024-Mar-26

## Scans Setup

	Area Scan	Zoom Scan
Grid Extents [mm]	120.0 x 210.0	30.0 x 30.0 x 30.0
Grid Steps [mm]	15.0 x 15.0	6.0 x 6.0 x 1.5
Sensor Surface [mm]	3.0	1.4
Graded Grid	N/A	Yes
M2/M1 [%]		84.7
Dist 3dB Peak [mm]		8.7

## Measurement Results

	Area Scan	Zoom Scan
psSAR1g [W/Kg]	0.148	<b>0.179</b>
psSAR10g [W/Kg]	0.083	<b>0.095</b>
Power Drift [dB]	0.01	-0.01





# Measurement Report for Band 2, EDGE BOTTOM, Normal, CELL Main2

## Exposure Conditions

Band	Band 2	TSL Permittivity	41.1
Frequency [MHz]   Channel Number	1880.000   18900	TSL Conductivity [S/m]	1.43
Group   UID	LTE-FDD   10297-AAE	Phantom Section   TSL	Flat   HSL
Conversion Factor	8.08	Test Distance [mm]	10.00
Communication Configuration	LTE-FDD (SC-FDMA, 50% RB, 20 MHz, QPSK) RBPosition:High AntennaCfg:SISO		

## Hardware Setup

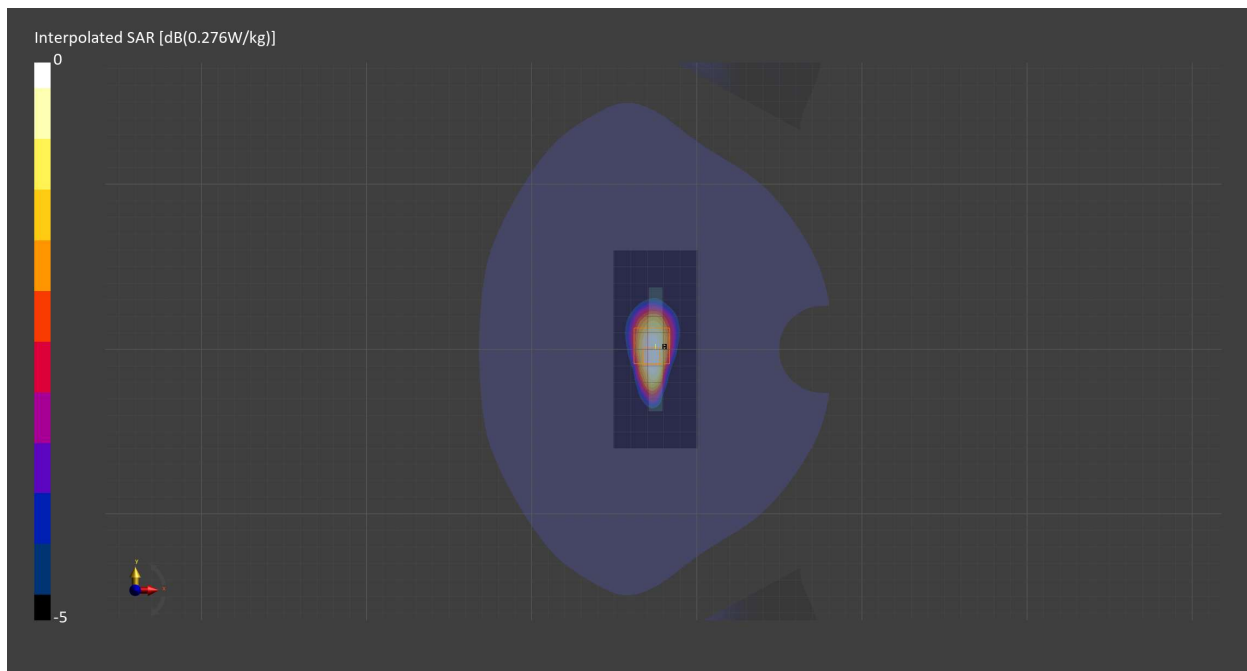
Probe   Calibration Date	EX3DV4 - SN7709   2023-11-30	Phantom	Twin-SAM V8.0 (30deg probe tilt) - SN1742
DAE   Calibration Date	DAE4 Sn1714   2023-11-22	TSL   Meas. Date	HSL900   2024-Mar-26

## Scans Setup

	Area Scan	Zoom Scan
Grid Extents [mm]	51.0 x 120.0	30.0 x 30.0 x 30.0
Grid Steps [mm]	8.5 x 15.0	6.0 x 6.0 x 1.5
Sensor Surface [mm]	3.0	1.4
Graded Grid	N/A	Yes
M2/M1 [%]		84.4
Dist 3dB Peak [mm]		9.9

## Measurement Results

	Area Scan	Zoom Scan
psSAR1g [W/Kg]	0.225	<b>0.232</b>
psSAR10g [W/Kg]	0.124	<b>0.133</b>
Power Drift [dB]	-0.02	-0.01



# Measurement Report for Band 2, TILT, Normal, CELL Sub

## Exposure Conditions

Band	Band 2	TSL Permittivity	40.6
Frequency [MHz]   Channel Number	1880.000   18900	TSL Conductivity [S/m]	1.39
Group   UID	LTE-FDD   10297-AAE	Phantom Section   TSL	LeftHead   HSL
Conversion Factor	8.18	Test Distance [mm]	0.00
Communication Configuration	LTE-FDD (SC-FDMA, 50% RB, 20 MHz, QPSK) RBPosition:High AntennaCfg:SISO		

## Hardware Setup

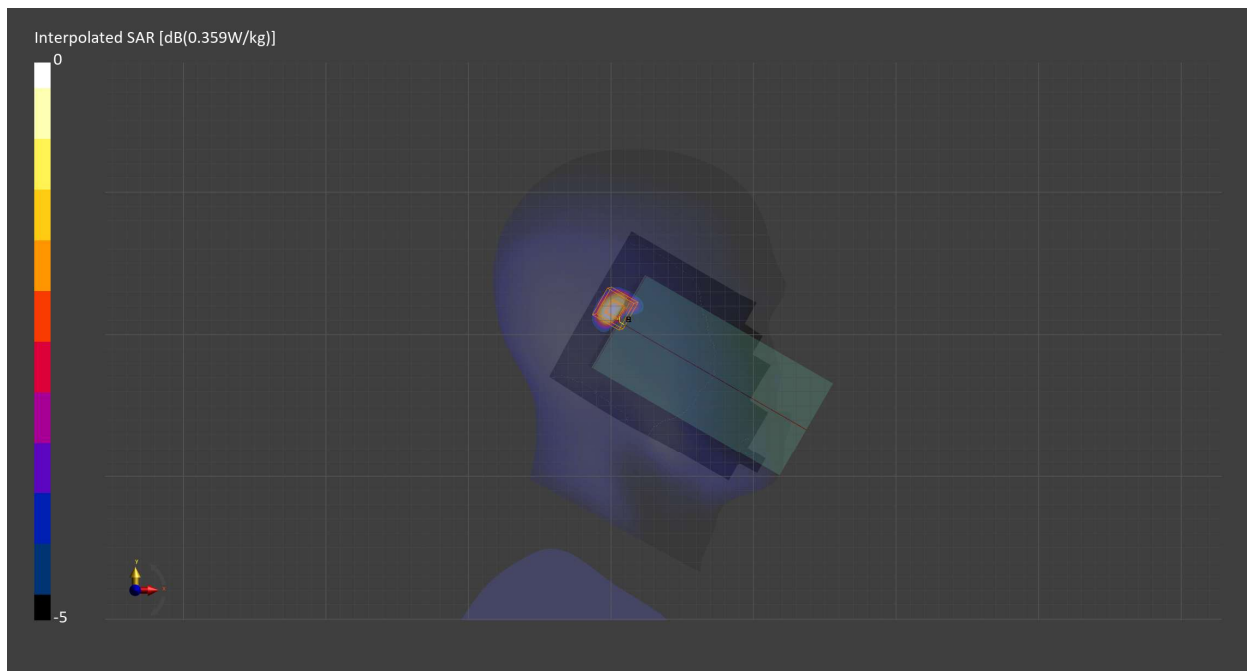
Probe   Calibration Date	EX3DV4 - SN7711   2023-03-29	Phantom	Twin-SAM V8.0 (30deg probe tilt) - SN2082
DAE   Calibration Date	DAE4 Sn1716   2023-03-16	TSL   Meas. Date	HBBL-600-10000   2024-Feb-08

## Scans Setup

	Area Scan	Zoom Scan
Grid Extents [mm]	120.0 x 210.0	30.0 x 30.0 x 30.0
Grid Steps [mm]	15.0 x 15.0	4.7 x 4.7 x 1.4
Sensor Surface [mm]	3.0	1.4
Graded Grid	N/A	Yes
M2/M1 [%]		82.1
Dist 3dB Peak [mm]		6.9

## Measurement Results

	Area Scan	Zoom Scan
psSAR1g [W/Kg]	0.283	<b>0.323</b>
psSAR10g [W/Kg]	0.128	<b>0.145</b>
Power Drift [dB]	N/A	0.02



# Measurement Report for Band 2, BACK, Normal, CELL Sub

## Exposure Conditions

Band	Band 2	TSL Permittivity	38.3
Frequency [MHz]   Channel Number	1880.000   18900	TSL Conductivity [S/m]	1.40
Group   UID	LTE-FDD   10297-AAE	Phantom Section   TSL	Flat   HSL
Conversion Factor	8.08	Test Distance [mm]	10.00
Communication Configuration	LTE-FDD (SC-FDMA, 50% RB, 20 MHz, QPSK) RBPosition:High AntennaCfg:SISO		

## Hardware Setup

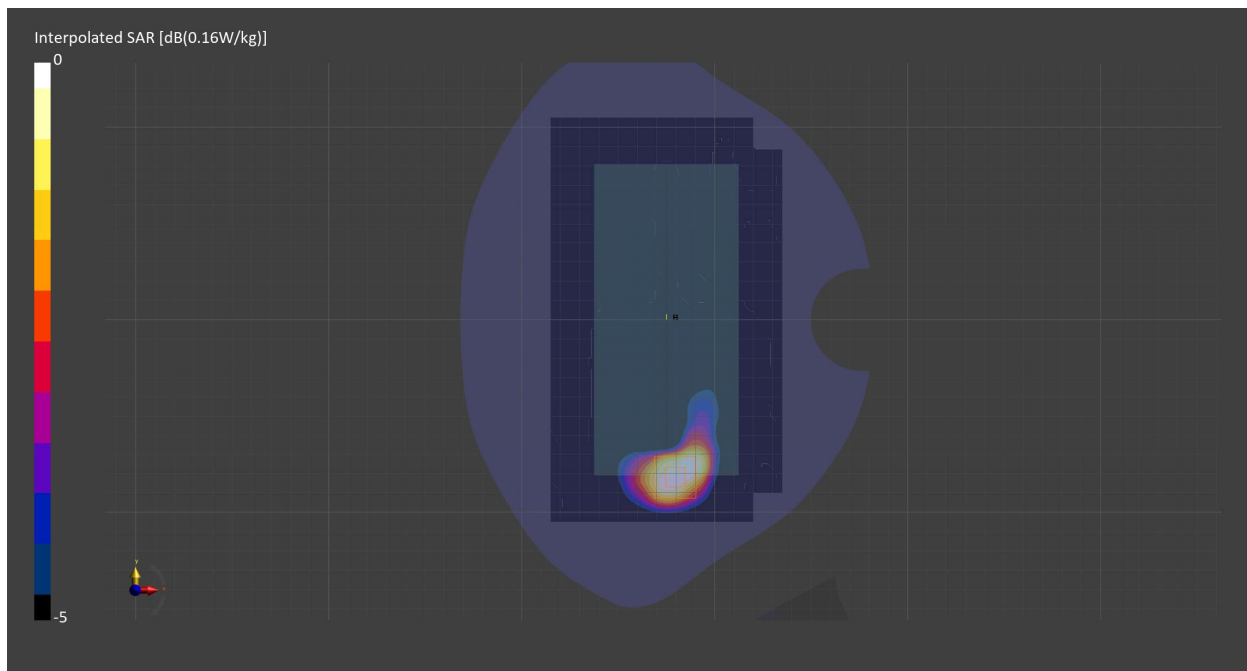
Probe   Calibration Date	EX3DV4 - SN7709   2023-11-30	Phantom	Twin-SAM V8.0 (30deg probe tilt) - SN1742
DAE   Calibration Date	DAE4 Sn1714   2023-11-22	TSL   Meas. Date	HBBL-600-10000   2024-Feb-05

## Scans Setup

	Area Scan	Zoom Scan
Grid Extents [mm]	120.0 x 210.0	30.0 x 30.0 x 30.0
Grid Steps [mm]	15.0 x 15.0	6.0 x 6.0 x 1.5
Sensor Surface [mm]	3.0	1.4
Graded Grid	N/A	Yes
M2/M1 [%]		85.6
Dist 3dB Peak [mm]		9.7

## Measurement Results

	Area Scan	Zoom Scan
psSAR1g [W/Kg]	0.080	<b>0.093</b>
psSAR10g [W/Kg]	0.046	<b>0.049</b>
Power Drift [dB]	N/A	-0.01



# Measurement Report for Band 2, EDGE TOP, Normal, CELL Sub

## Exposure Conditions

Band	Band 2	TSL Permittivity	38.3
Frequency [MHz]   Channel Number	1880.000   18900	TSL Conductivity [S/m]	1.40
Group   UID	LTE-FDD   10297-AAE	Phantom Section   TSL	Flat   HSL
Conversion Factor	8.08	Test Distance [mm]	10.00
Communication Configuration	LTE-FDD (SC-FDMA, 50% RB, 20 MHz, QPSK) RBPosition:High AntennaCfg:SISO		

## Hardware Setup

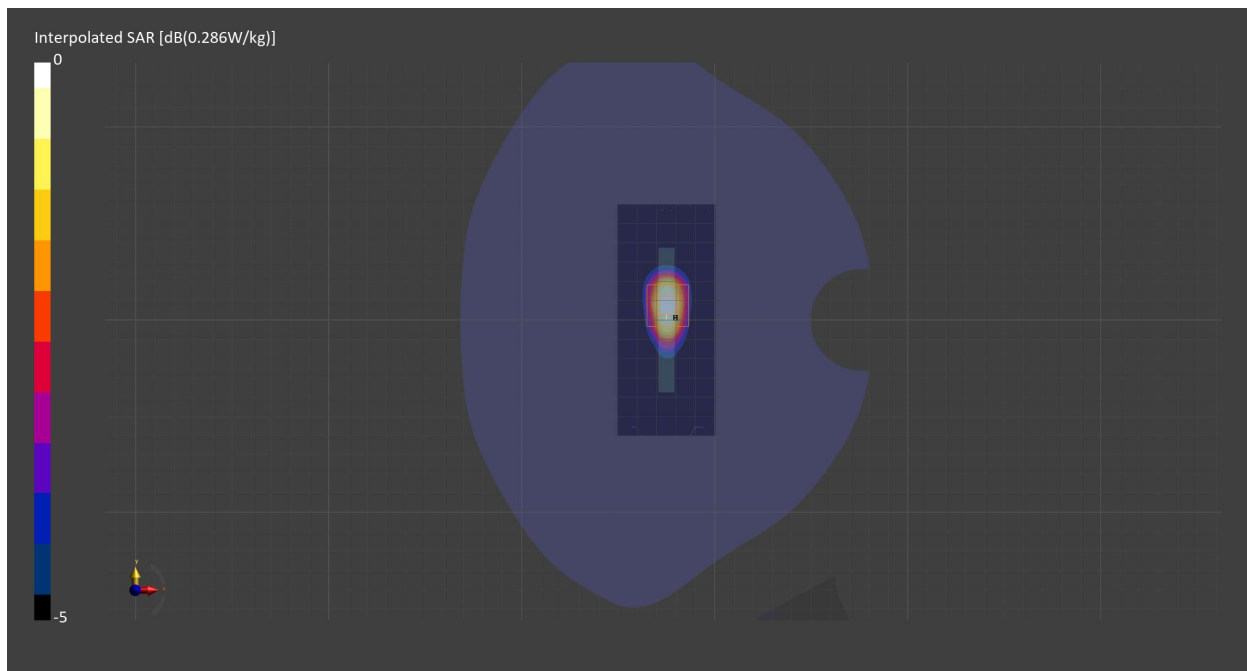
Probe   Calibration Date	EX3DV4 - SN7709   2023-11-30	Phantom	Twin-SAM V8.0 (30deg probe tilt) - SN1742
DAE   Calibration Date	DAE4 Sn1714   2023-11-22	TSL   Meas. Date	HBBL-600-10000   2024-Feb-05

## Scans Setup

	Area Scan	Zoom Scan
Grid Extents [mm]	51.0 x 120.0	30.0 x 30.0 x 30.0
Grid Steps [mm]	8.5 x 15.0	6.0 x 6.0 x 1.5
Sensor Surface [mm]	3.0	1.4
Graded Grid	N/A	Yes
M2/M1 [%]		84.5
Dist 3dB Peak [mm]		9.6

## Measurement Results

	Area Scan	Zoom Scan
psSAR1g [W/Kg]	0.150	<b>0.157</b>
psSAR10g [W/Kg]	0.078	<b>0.080</b>
Power Drift [dB]	N/A	-0.00



# Measurement Report for Band 4, CHEEK, Normal, CELL Main2

## Exposure Conditions

Band	Band 4	TSL Permittivity	41.1
Frequency [MHz]   Channel Number	1732.500   20175	TSL Conductivity [S/m]	1.38
Group   UID	LTE-FDD   10169-CAF	Phantom Section   TSL	RightHead   HSL
Conversion Factor	8.95	Test Distance [mm]	0.00
Communication Configuration	LTE-FDD (SC-FDMA, 1 RB, 20 MHz, QPSK) RBPosition:Low AntennaCfg:SISO		

## Hardware Setup

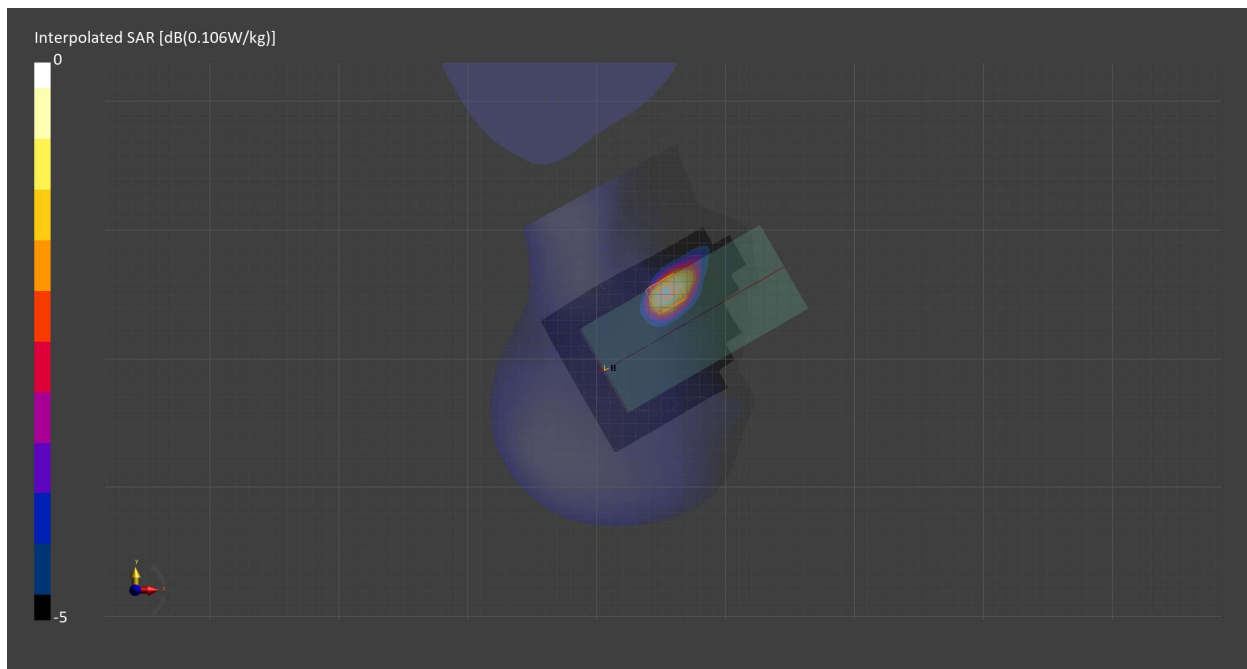
Probe   Calibration Date	EX3DV4 - SN7710   2024-01-16	Phantom	Twin-SAM V8.0 (30deg probe tilt) - SN2082
DAE   Calibration Date	DAE4 Sn1715   2024-02-12	TSL   Meas. Date	HBBL600-10000V6   2024-Mar-25

## Scans Setup

	Area Scan	Zoom Scan
Grid Extents [mm]	120.0 x 210.0	30.0 x 30.0 x 30.0
Grid Steps [mm]	15.0 x 15.0	6.0 x 6.0 x 1.5
Sensor Surface [mm]	3.0	1.4
Graded Grid	N/A	Yes
M2/M1 [%]		88.3
Dist 3dB Peak [mm]		9.9

## Measurement Results

	Area Scan	Zoom Scan
psSAR1g [W/Kg]	0.087	<b>0.090</b>
psSAR10g [W/Kg]	0.050	<b>0.057</b>
Power Drift [dB]	-0.01	0.02



# Measurement Report for Band 4, BACK, Normal, CELL Main2

## Exposure Conditions

Band	Band 4	TSL Permittivity	41.1
Frequency [MHz]   Channel Number	1732.500   20175	TSL Conductivity [S/m]	1.38
Group   UID	LTE-FDD   10297-AAE	Phantom Section   TSL	Flat   HSL
Conversion Factor	8.95	Test Distance [mm]	10.00
Communication Configuration	LTE-FDD (SC-FDMA, 50% RB, 20 MHz, QPSK) RBPosition:Mid AntennaCfg:SISO		

## Hardware Setup

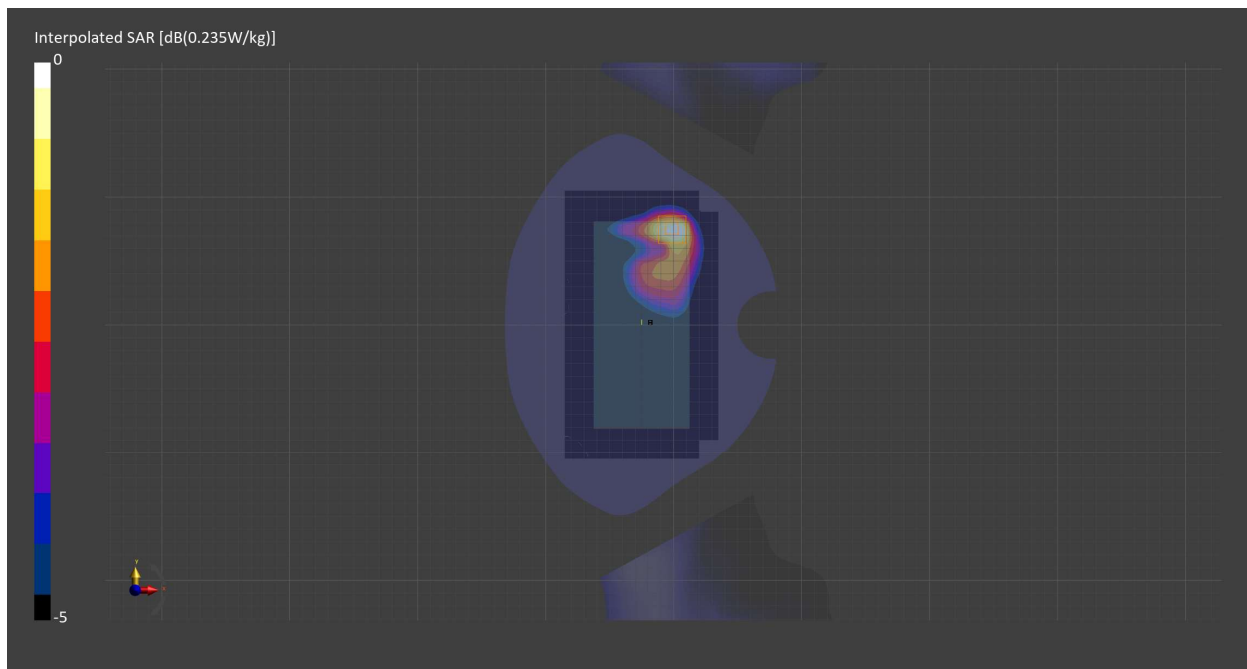
Probe   Calibration Date	EX3DV4 - SN7710   2024-01-16	Phantom	Twin-SAM V8.0 (30deg probe tilt) - SN2082
DAE   Calibration Date	DAE4 Sn1715   2024-02-12	TSL   Meas. Date	HBBL600-10000V6   2024-Mar-25

## Scans Setup

	Area Scan	Zoom Scan
Grid Extents [mm]	120.0 x 210.0	30.0 x 30.0 x 30.0
Grid Steps [mm]	15.0 x 15.0	6.0 x 6.0 x 1.5
Sensor Surface [mm]	3.0	1.4
Graded Grid	N/A	Yes
M2/M1 [%]		82.8
Dist 3dB Peak [mm]		11.4

## Measurement Results

	Area Scan	Zoom Scan
psSAR1g [W/Kg]	0.194	<b>0.199</b>
psSAR10g [W/Kg]	0.111	<b>0.113</b>
Power Drift [dB]	-0.00	-0.00



# Measurement Report for Band 4, EDGE BOTTOM, Normal, CELL Main2

## Exposure Conditions

Band	Band 4	TSL Permittivity	41.1
Frequency [MHz]   Channel Number	1732.500   20175	TSL Conductivity [S/m]	1.38
Group   UID	LTE-FDD   10297-AAE	Phantom Section   TSL	Flat   HSL
Conversion Factor	8.95	Test Distance [mm]	10.00
Communication Configuration	LTE-FDD (SC-FDMA, 50% RB, 20 MHz, QPSK) RBPosition:Mid AntennaCfg:SISO		

## Hardware Setup

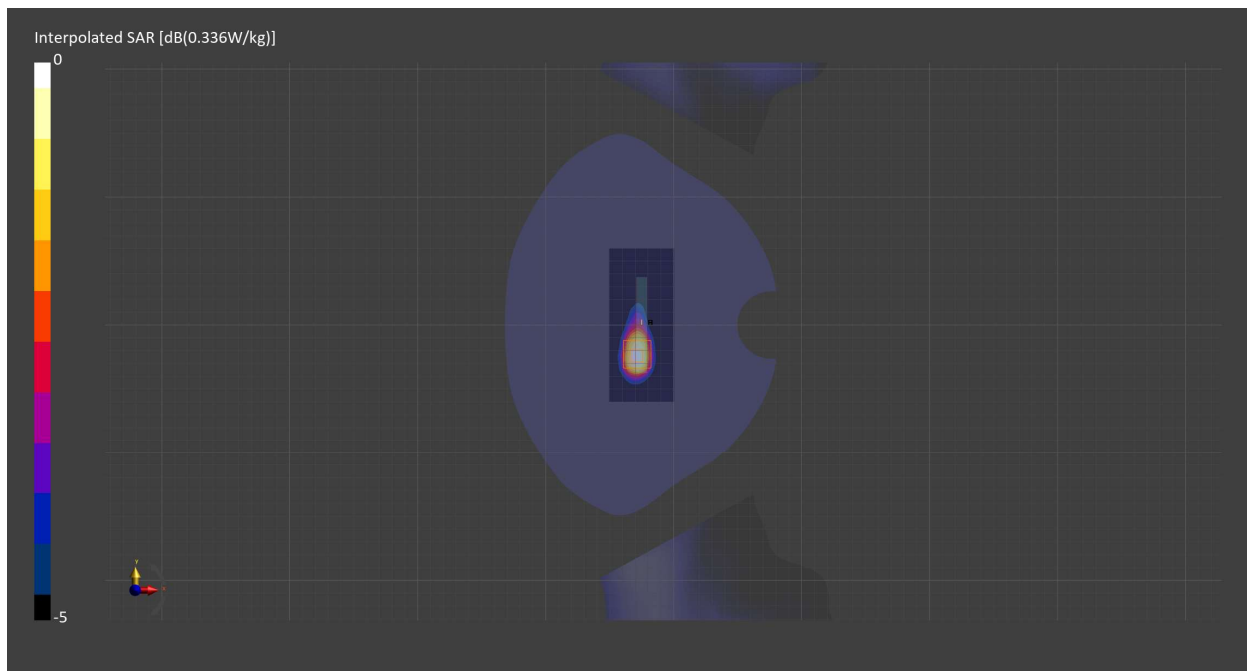
Probe   Calibration Date	EX3DV4 - SN7710   2024-01-16	Phantom	Twin-SAM V8.0 (30deg probe tilt) - SN2082
DAE   Calibration Date	DAE4 Sn1715   2024-02-12	TSL   Meas. Date	HBBL600-10000V6   2024-Mar-25

## Scans Setup

	Area Scan	Zoom Scan
Grid Extents [mm]	51.0 x 120.0	30.0 x 30.0 x 30.0
Grid Steps [mm]	8.5 x 15.0	6.0 x 6.0 x 1.5
Sensor Surface [mm]	3.0	1.4
Graded Grid	N/A	Yes
M2/M1 [%]		81.1
Dist 3dB Peak [mm]		10.8

## Measurement Results

	Area Scan	Zoom Scan
psSAR1g [W/Kg]	0.271	<b>0.285</b>
psSAR10g [W/Kg]	0.148	<b>0.151</b>
Power Drift [dB]	0.00	0.01



# Measurement Report for Band 5, CHEEK, Normal, CELL Main1

## Exposure Conditions

Band	Band 5	TSL Permittivity	41.6
Frequency [MHz]   Channel Number	836.500   20525	TSL Conductivity [S/m]	0.910
Group   UID	LTE-FDD   10154-CAH	Phantom Section   TSL	RightHead   HSL
Conversion Factor	9.15	Test Distance [mm]	0.00
Communication Configuration	LTE-FDD (SC-FDMA, 50% RB, 10 MHz, QPSK) RBPosition:Low AntennaCfg:SISO		

## Hardware Setup

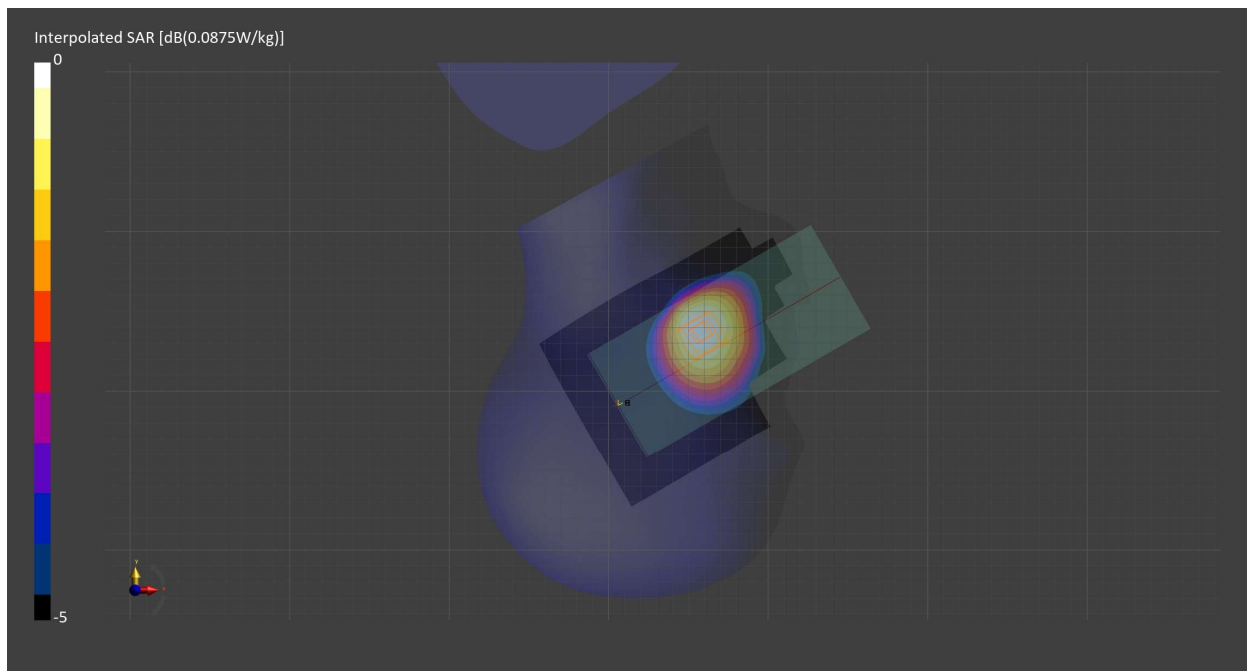
Probe   Calibration Date	EX3DV4 - SN7709   2023-11-30	Phantom	Twin-SAM V8.0 (30deg probe tilt) - SN1742
DAE   Calibration Date	DAE4 Sn1714   2023-11-22	TSL   Meas. Date	HBBL-600-10000   2024-Feb-12

## Scans Setup

	Area Scan	Zoom Scan
Grid Extents [mm]	120.0 x 210.0	30.0 x 30.0 x 30.0
Grid Steps [mm]	15.0 x 15.0	6.0 x 6.0 x 1.5
Sensor Surface [mm]	3.0	1.4
Graded Grid	N/A	Yes
M2/M1 [%]		98.3
Dist 3dB Peak [mm]		24.2

## Measurement Results

	Area Scan	Zoom Scan
psSAR1g [W/Kg]	0.074	<b>0.077</b>
psSAR10g [W/Kg]	0.051	<b>0.060</b>
Power Drift [dB]	N/A	0.03





# Measurement Report for Band 5, BACK, Normal, CELL Main1

## Exposure Conditions

Band	Band 5	TSL Permittivity	41.6
Frequency [MHz]   Channel Number	836.500   20525	TSL Conductivity [S/m]	0.910
Group   UID	LTE-FDD   10154-CAH	Phantom Section   TSL	Flat   HSL
Conversion Factor	9.15	Test Distance [mm]	10.00
Communication Configuration	LTE-FDD (SC-FDMA, 50% RB, 10 MHz, QPSK) RBPosition:Low AntennaCfg:SISO		

## Hardware Setup

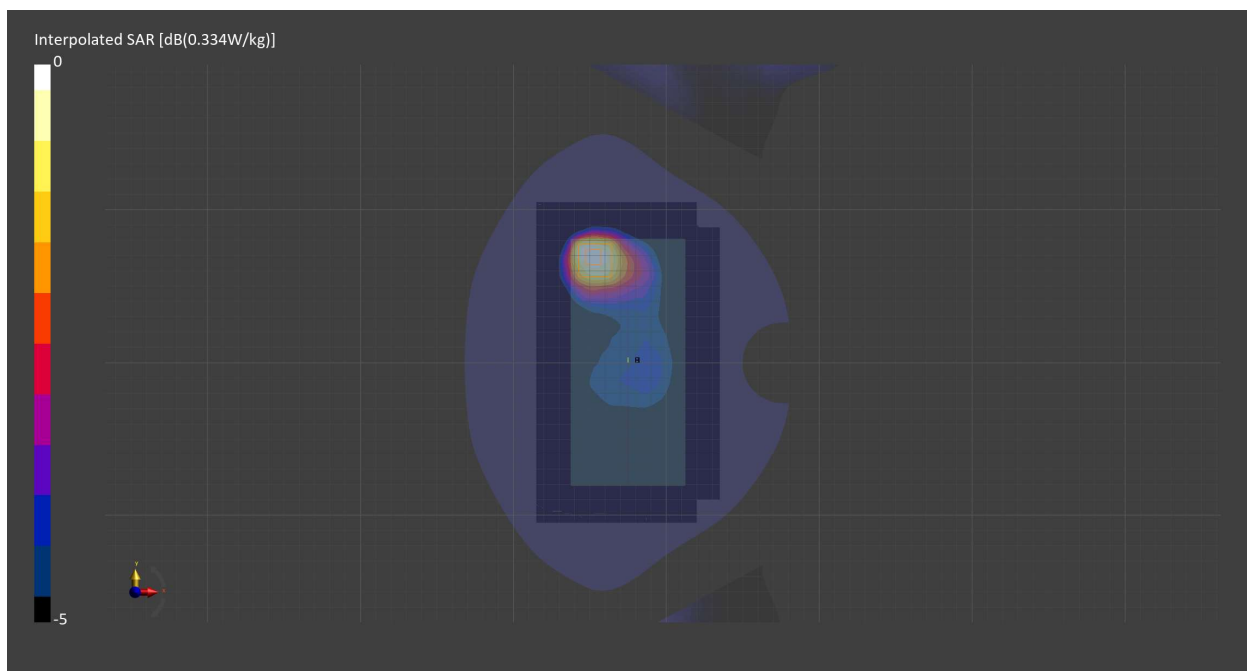
Probe   Calibration Date	EX3DV4 - SN7709   2023-11-30	Phantom	Twin-SAM V8.0 (30deg probe tilt) - SN1742
DAE   Calibration Date	DAE4 Sn1714   2023-11-22	TSL   Meas. Date	HBBL-600-10000   2024-Feb-12

## Scans Setup

	Area Scan	Zoom Scan
Grid Extents [mm]	120.0 x 210.0	30.0 x 30.0 x 30.0
Grid Steps [mm]	15.0 x 15.0	6.0 x 6.0 x 1.5
Sensor Surface [mm]	3.0	1.4
Graded Grid	N/A	Yes
M2/M1 [%]		87.2
Dist 3dB Peak [mm]		13.5

## Measurement Results

	Area Scan	Zoom Scan
psSAR1g [W/Kg]	0.210	<b>0.208</b>
psSAR10g [W/Kg]	0.137	<b>0.127</b>
Power Drift [dB]	N/A	-0.02



# Measurement Report for Band 12, CHEEK, Normal, CELL Main1

## Exposure Conditions

Band	Band 12	TSL Permittivity	42.1
Frequency [MHz]   Channel Number	707.500   23095	TSL Conductivity [S/m]	0.866
Group   UID	LTE-FDD   10155-CAH	Phantom Section   TSL	LeftHead   HSL
Conversion Factor	9.5	Test Distance [mm]	0.00
Communication Configuration	LTE-FDD (SC-FDMA, 50% RB, 10 MHz, 16-QAM) RBPosition:Mid AntennaCfg:SISO		

## Hardware Setup

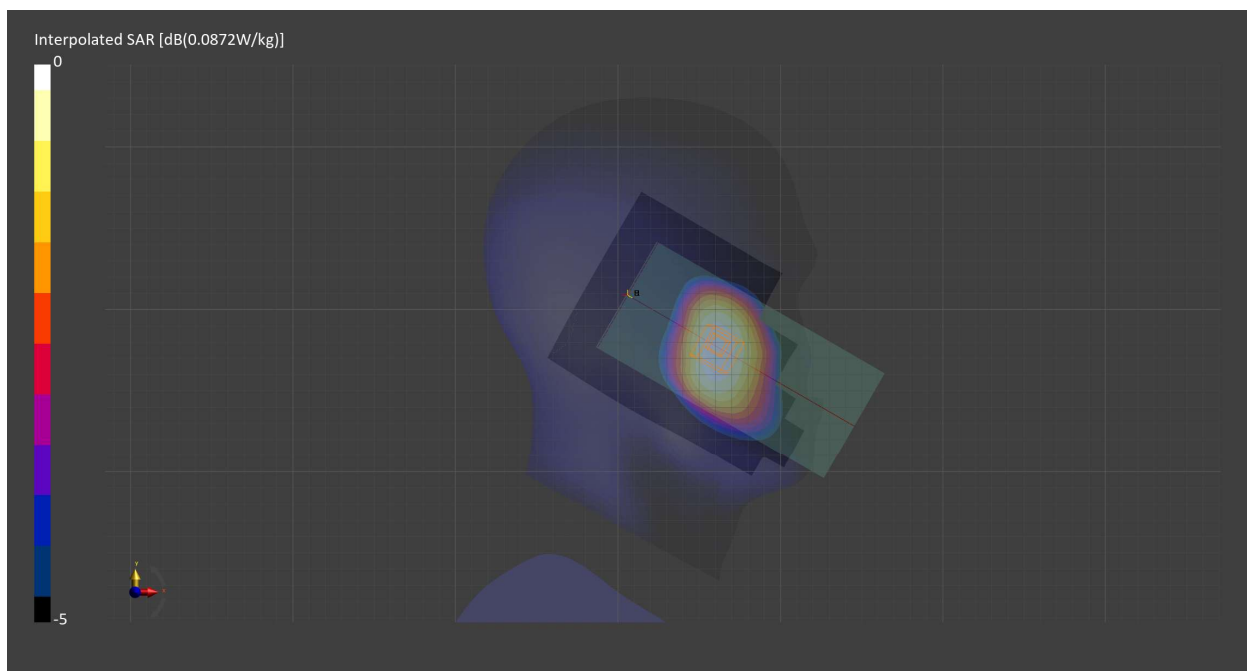
Probe   Calibration Date	EX3DV4 - SN7709   2023-11-30	Phantom	Twin-SAM V8.0 (30deg probe tilt) - SN1742
DAE   Calibration Date	DAE4 Sn1714   2023-11-22	TSL   Meas. Date	HBBL-600-10000   2024-Feb-12

## Scans Setup

	Area Scan	Zoom Scan
Grid Extents [mm]	120.0 x 210.0	30.0 x 30.0 x 30.0
Grid Steps [mm]	15.0 x 15.0	6.0 x 6.0 x 1.5
Sensor Surface [mm]	3.0	1.4
Graded Grid	N/A	Yes
M2/M1 [%]		99.5
Dist 3dB Peak [mm]		22.5

## Measurement Results

	Area Scan	Zoom Scan
psSAR1g [W/Kg]	0.076	<b>0.079</b>
psSAR10g [W/Kg]	0.053	<b>0.064</b>
Power Drift [dB]	N/A	-0.02



# Measurement Report for Band 12, BACK, Normal, CELL Main1

## Exposure Conditions

Band	Band 12	TSL Permittivity	42.1
Frequency [MHz]   Channel Number	707.500   23095	TSL Conductivity [S/m]	0.866
Group   UID	LTE-FDD   10155-CAH	Phantom Section   TSL	Flat   HSL
Conversion Factor	9.5	Test Distance [mm]	10.00
Communication Configuration	LTE-FDD (SC-FDMA, 50% RB, 10 MHz, 16-QAM) RBPosition:Mid AntennaCfg:SISO		

## Hardware Setup

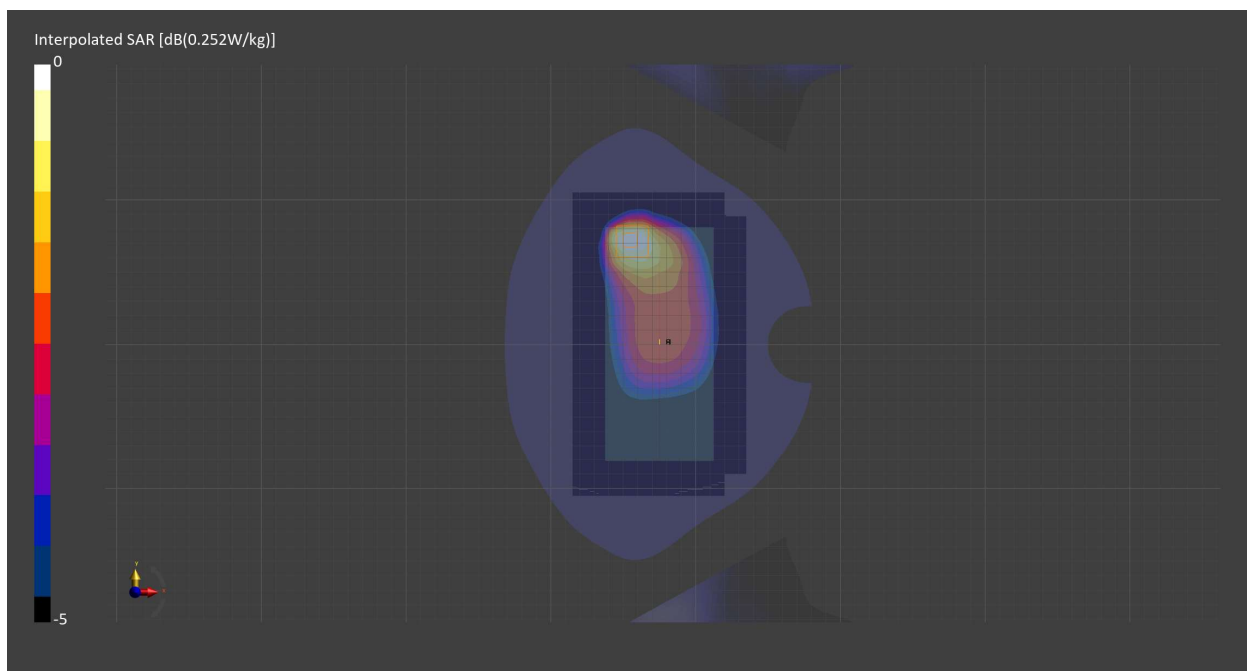
Probe   Calibration Date	EX3DV4 - SN7709   2023-11-30	Phantom	Twin-SAM V8.0 (30deg probe tilt) - SN1742
DAE   Calibration Date	DAE4 Sn1714   2023-11-22	TSL   Meas. Date	HBBL-600-10000   2024-Feb-12

## Scans Setup

	Area Scan	Zoom Scan
Grid Extents [mm]	120.0 x 210.0	30.0 x 30.0 x 30.0
Grid Steps [mm]	15.0 x 15.0	6.0 x 6.0 x 1.5
Sensor Surface [mm]	3.0	1.4
Graded Grid	N/A	Yes
M2/M1 [%]		82.1
Dist 3dB Peak [mm]		12.8

## Measurement Results

	Area Scan	Zoom Scan
psSAR1g [W/Kg]	0.157	<b>0.154</b>
psSAR10g [W/Kg]	0.105	<b>0.097</b>
Power Drift [dB]	N/A	0.01



# Measurement Report for Band 12, EDGE LEFT, Normal, CELL Main1

## Exposure Conditions

Band	Band 12	TSL Permittivity	42.1
Frequency [MHz]   Channel Number	707.500   23095	TSL Conductivity [S/m]	0.866
Group   UID	LTE-FDD   10175-CAH	Phantom Section   TSL	Flat   HSL
Conversion Factor	9.5	Test Distance [mm]	10.00
Communication Configuration	LTE-FDD (SC-FDMA, 1 RB, 10 MHz, QPSK) RBPosition:Low AntennaCfg:SISO		

## Hardware Setup

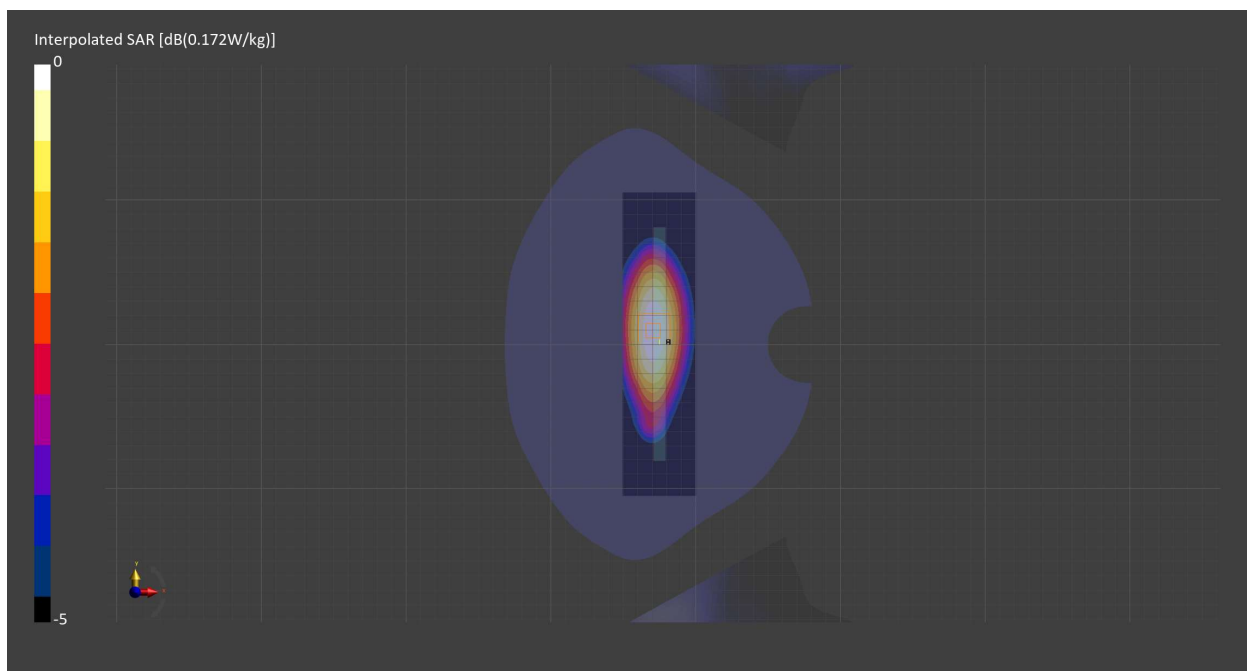
Probe   Calibration Date	EX3DV4 - SN7709   2023-11-30	Phantom	Twin-SAM V8.0 (30deg probe tilt) - SN1742
DAE   Calibration Date	DAE4 Sn1714   2023-11-22	TSL   Meas. Date	HBBL-600-10000   2024-Feb-12

## Scans Setup

	Area Scan	Zoom Scan
Grid Extents [mm]	51.0 x 210.0	30.0 x 30.0 x 30.0
Grid Steps [mm]	8.5 x 15.0	6.0 x 6.0 x 1.5
Sensor Surface [mm]	3.0	1.4
Graded Grid	N/A	Yes
M2/M1 [%]		89.6
Dist 3dB Peak [mm]		> 15.0

## Measurement Results

	Area Scan	Zoom Scan
psSAR1g [W/Kg]	0.151	<b>0.154</b>
psSAR10g [W/Kg]	0.104	<b>0.107</b>
Power Drift [dB]	N/A	0.02



# Measurement Report for Band 13, CHEEK, Normal, CELL Main1

## Exposure Conditions

Band	Band 13	TSL Permittivity	40.9
Frequency [MHz]   Channel Number	782.000   23230	TSL Conductivity [S/m]	0.906
Group   UID	LTE-FDD   10154-CAH	Phantom Section   TSL	LeftHead   HSL
Conversion Factor	10.56	Test Distance [mm]	0.00
Communication Configuration	LTE-FDD (SC-FDMA, 50% RB, 10 MHz, QPSK) RBPosition:Mid AntennaCfg:SISO		

## Hardware Setup

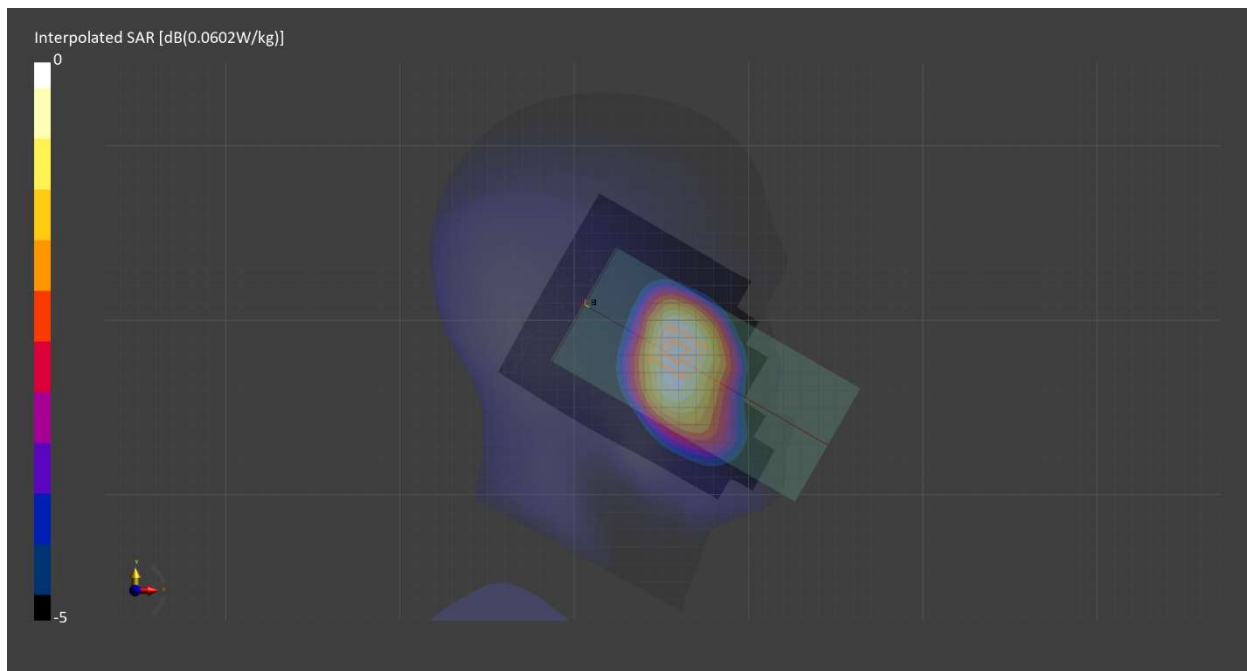
Probe   Calibration Date	EX3DV4 - SN7709   2022-12-12	Phantom	Twin-SAM V8.0 (30deg probe tilt) - SN1742
DAE   Calibration Date	DAE4 Sn1714   2022-11-23	TSL   Meas. Date	HBBL-600-10000   2024-Feb-01

## Scans Setup

	Area Scan	Zoom Scan
Grid Extents [mm]	120.0 x 210.0	30.0 x 30.0 x 30.0
Grid Steps [mm]	15.0 x 15.0	6.0 x 6.0 x 1.5
Sensor Surface [mm]	3.0	1.4
Graded Grid	N/A	Yes
M2/M1 [%]		95.9
Dist 3dB Peak [mm]		> 15.0

## Measurement Results

	Area Scan	Zoom Scan
psSAR1g [W/Kg]	0.053	<b>0.057</b>
psSAR10g [W/Kg]	0.037	<b>0.045</b>
Power Drift [dB]	N/A	-0.01



# Measurement Report for Band 13, BACK, Normal, CELL Main1

## Exposure Conditions

Band	Band 13	TSL Permittivity	40.9
Frequency [MHz]   Channel Number	782.000   23230	TSL Conductivity [S/m]	0.906
Group   UID	LTE-FDD   10154-CAH	Phantom Section   TSL	Flat   HSL
Conversion Factor	10.56	Test Distance [mm]	10.00
Communication Configuration	LTE-FDD (SC-FDMA, 50% RB, 10 MHz, QPSK) RBPosition:Mid AntennaCfg:SISO		

## Hardware Setup

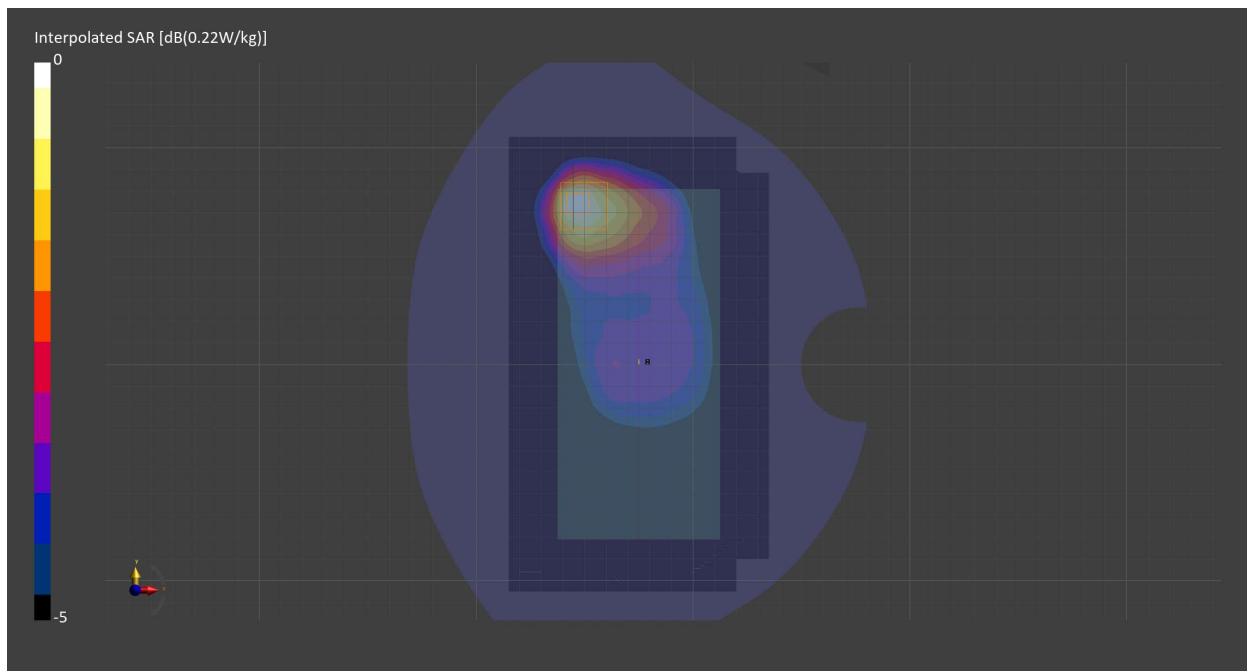
Probe   Calibration Date	EX3DV4 - SN7709   2022-12-12	Phantom	Twin-SAM V8.0 (30deg probe tilt) - SN1742
DAE   Calibration Date	DAE4 Sn1714   2022-11-23	TSL   Meas. Date	HBBL-600-10000   2024-Feb-01

## Scans Setup

	Area Scan	Zoom Scan
Grid Extents [mm]	120.0 x 210.0	30.0 x 30.0 x 30.0
Grid Steps [mm]	15.0 x 15.0	6.0 x 6.0 x 1.5
Sensor Surface [mm]	3.0	1.4
Graded Grid	N/A	Yes
M2/M1 [%]		83.7
Dist 3dB Peak [mm]		12.6

## Measurement Results

	Area Scan	Zoom Scan
psSAR1g [W/Kg]	0.126	<b>0.121</b>
psSAR10g [W/Kg]	0.081	<b>0.073</b>
Power Drift [dB]	N/A	-0.01



# Measurement Report for Band 41, CHEEK, Normal, CELL Main2

## Exposure Conditions

<b>Band</b>	Band 41	<b>TSL Permittivity</b>	40.2
<b>Frequency [MHz]   Channel Number</b>	2593.000   40620	<b>TSL Conductivity [S/m]</b>	1.88
<b>Group   UID</b>	LTE-TDD   10435-AAG	<b>Phantom Section   TSL</b>	RightHead   HSL
<b>Conversion Factor</b>	7.67	<b>Test Distance [mm]</b>	0.00
<b>Communication Configuration</b>	LTE-TDD (SC-FDMA, 1 RB, 20 MHz, QPSK, UL Subframe=2,3,4,7,8,9) RBPosition:Mid AntennaCfg:SISO		

## Hardware Setup

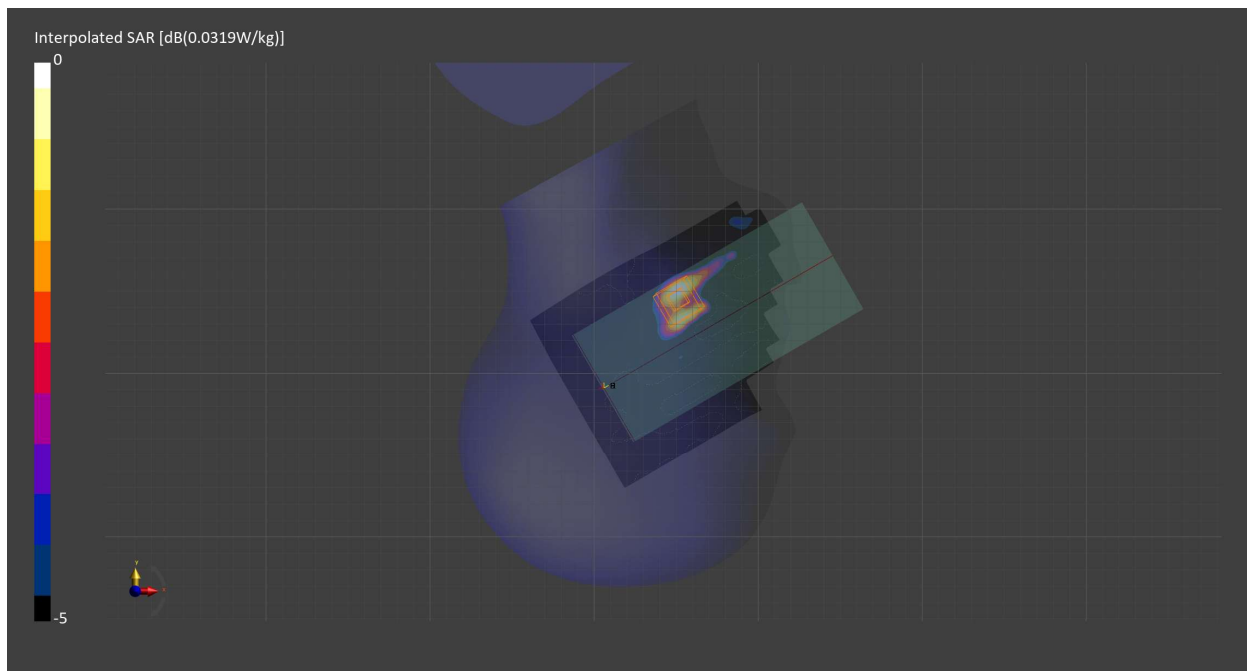
<b>Probe   Calibration Date</b>	EX3DV4 - SN7711   2023-03-29	<b>Phantom</b>	Twin-SAM V8.0 (30deg probe tilt) - SN2082
<b>DAE   Calibration Date</b>	DAE4 Sn1716   2023-03-16	<b>TSL   Meas. Date</b>	HBBL-600-10000   2024-Feb-12

## Scans Setup

	Area Scan	Zoom Scan
<b>Grid Extents [mm]</b>	120.0 x 200.0	30.0 x 30.0 x 30.0
<b>Grid Steps [mm]</b>	10.0 x 10.0	5.0 x 5.0 x 1.5
<b>Sensor Surface [mm]</b>	3.0	1.4
<b>Graded Grid</b>	N/A	Yes
<b>M2/M1 [%]</b>		90.1
<b>Dist 3dB Peak [mm]</b>		7.6

## Measurement Results

	Area Scan	Zoom Scan
<b>psSAR1g [W/Kg]</b>	0.022	<b>0.019</b>
<b>psSAR10g [W/Kg]</b>	0.011	<b>0.010</b>
<b>Power Drift [dB]</b>	N/A	-2.33



# Measurement Report for Band 41, BACK, Normal, CELL Main2

## Exposure Conditions

Band	Band 41	TSL Permittivity	39.3
Frequency [MHz]   Channel Number	2593.000   40620	TSL Conductivity [S/m]	1.88
Group   UID	LTE-TDD   10435-AAG	Phantom Section   TSL	Flat   HSL
Conversion Factor	7.67	Test Distance [mm]	10.00
Communication Configuration	LTE-TDD (SC-FDMA, 1 RB, 20 MHz, QPSK, UL Subframe=2,3,4,7,8,9) RBPosition:Mid AntennaCfg:SISO		

## Hardware Setup

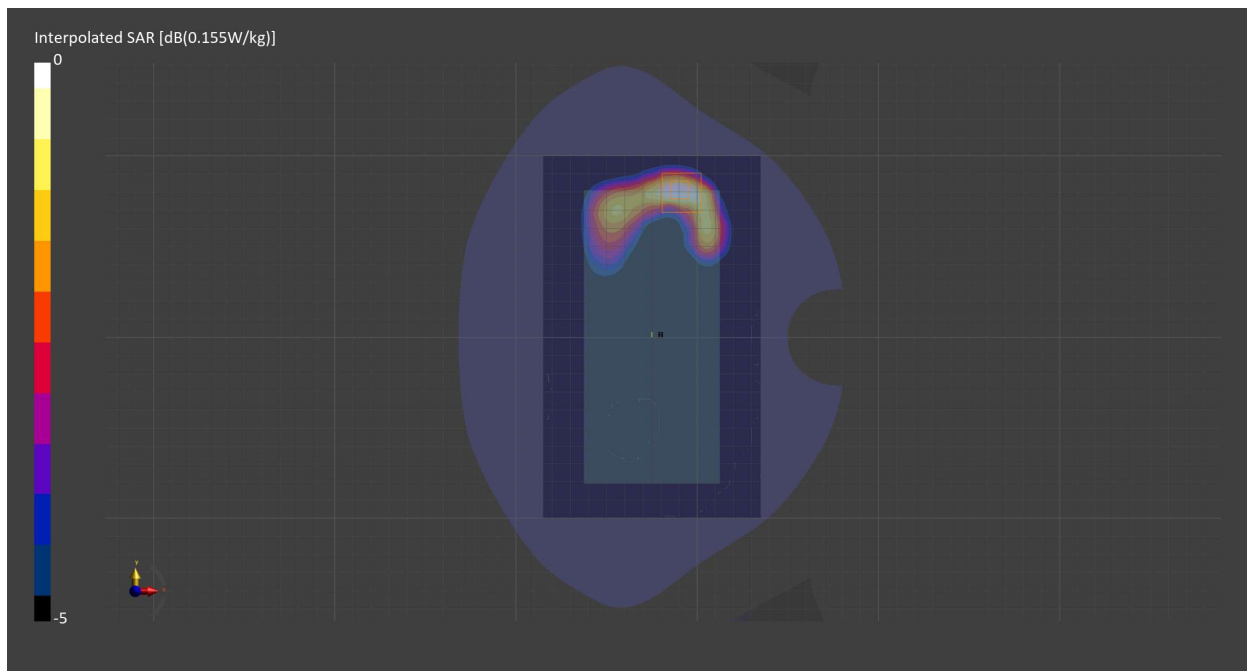
Probe   Calibration Date	EX3DV4 - SN7711   2023-03-29	Phantom	Twin-SAM V8.0 (30deg probe tilt) - SN2082
DAE   Calibration Date	DAE4 Sn1716   2023-03-16	TSL   Meas. Date	HBBL-600-10000   2024-Feb-20

## Scans Setup

	Area Scan	Zoom Scan
Grid Extents [mm]	120.0 x 200.0	30.0 x 30.0 x 30.0
Grid Steps [mm]	10.0 x 10.0	5.0 x 5.0 x 1.5
Sensor Surface [mm]	3.0	1.4
Graded Grid	N/A	Yes
M2/M1 [%]		83.8
Dist 3dB Peak [mm]		10.0

## Measurement Results

	Area Scan	Zoom Scan
psSAR1g [W/Kg]	0.085	<b>0.083</b>
psSAR10g [W/Kg]	0.042	<b>0.041</b>
Power Drift [dB]	N/A	-0.17





# Measurement Report for Band 41, EDGE BOTTOM, Normal, CELL Main2

## Exposure Conditions

Band	Band 41	TSL Permittivity	39.3
Frequency [MHz]   Channel Number	2593.000   40620	TSL Conductivity [S/m]	1.88
Group   UID	LTE-TDD   10494-AAG	Phantom Section   TSL	Flat   HSL
Conversion Factor	7.67	Test Distance [mm]	10.00
Communication Configuration	LTE-TDD (SC-FDMA, 50% RB, 20 MHz, QPSK, UL Subframe=2,3,4,7,8,9) RBPosition:Mid AntennaCfg:SISO		

## Hardware Setup

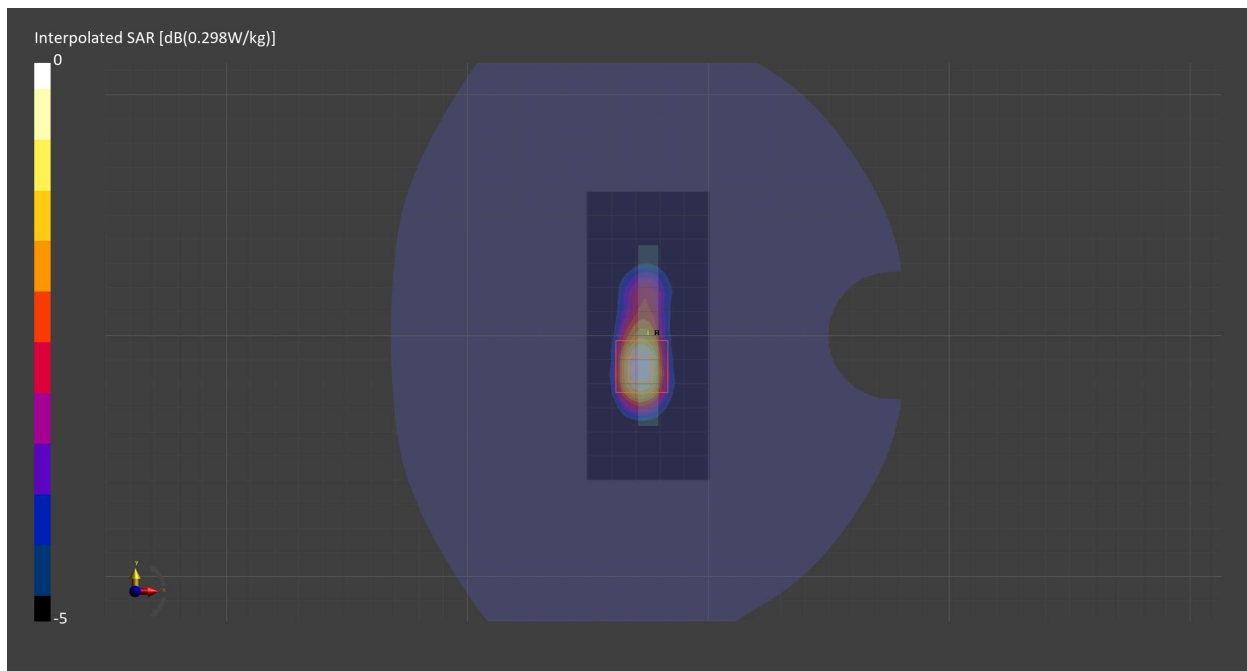
Probe   Calibration Date	EX3DV4 - SN7711   2023-03-29	Phantom	Twin-SAM V8.0 (30deg probe tilt) - SN2082
DAE   Calibration Date	DAE4 Sn1716   2023-03-16	TSL   Meas. Date	HBBL-600-10000   2024-Feb-20

## Scans Setup

	Area Scan	Zoom Scan
Grid Extents [mm]	51.0 x 120.0	30.0 x 30.0 x 30.0
Grid Steps [mm]	8.5 x 10.0	5.0 x 5.0 x 1.5
Sensor Surface [mm]	3.0	1.4
Graded Grid	N/A	Yes
M2/M1 [%]		81.2
Dist 3dB Peak [mm]		10.0

## Measurement Results

	Area Scan	Zoom Scan
psSAR1g [W/Kg]	0.145	<b>0.152</b>
psSAR10g [W/Kg]	0.071	<b>0.073</b>
Power Drift [dB]	N/A	0.00



# Measurement Report for Band n66, CHEEK, Normal, CELL Main2

## Exposure Conditions

Band	Band n66	TSL Permittivity	39.0
Frequency [MHz]   Channel Number	1745.000   349000	TSL Conductivity [S/m]	1.34
Group   UID	5G NR FR1 FDD   10931-AAC	Phantom Section   TSL	RightHead   HSL
Conversion Factor	9.05	Test Distance [mm]	0.00
Communication Configuration	5G NR (DFT-s-OFDM, 1 RB, 20 MHz, QPSK, 15 kHz) RBPosition:Low AntennaCfg:SISO		

## Hardware Setup

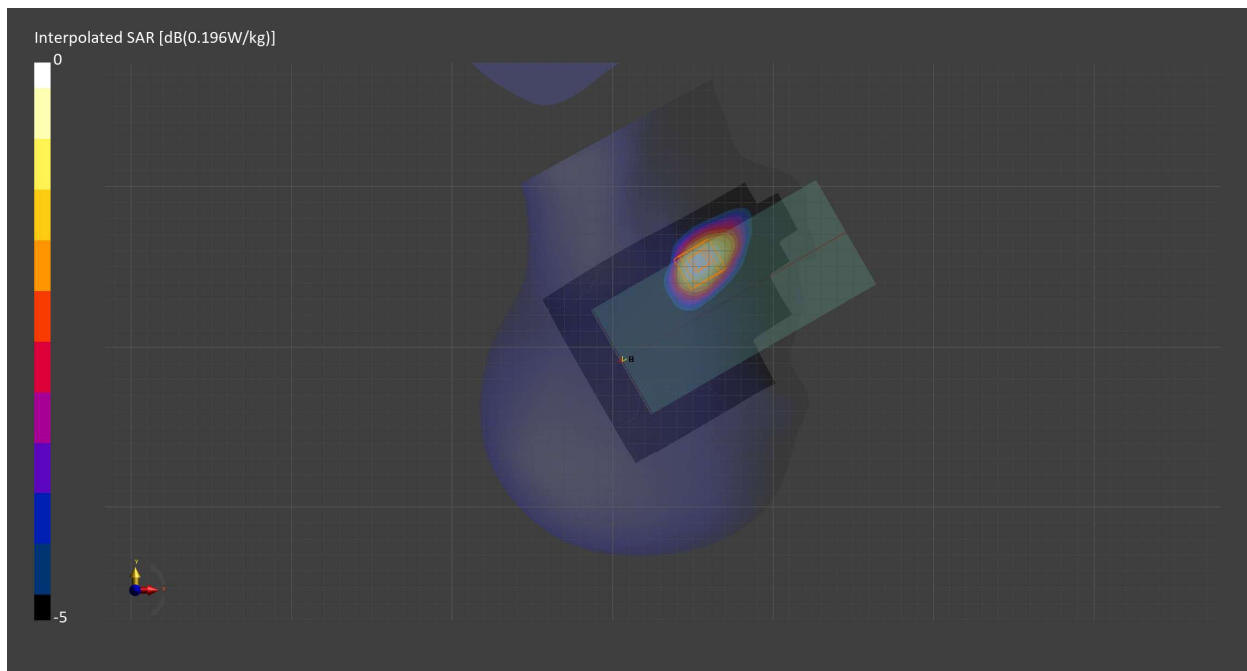
Probe   Calibration Date	EX3DV4 - SN7709   2022-12-12	Phantom	Twin-SAM V8.0 (30deg probe tilt) - SN1742
DAE   Calibration Date	DAE4 Sn1714   2022-11-23	TSL   Meas. Date	HBBL-600-10000   2024-Jan-16

## Scans Setup

	Area Scan	Zoom Scan
Grid Extents [mm]	120.0 x 210.0	30.0 x 30.0 x 30.0
Grid Steps [mm]	15.0 x 15.0	6.0 x 6.0 x 1.5
Sensor Surface [mm]	3.0	1.4
Graded Grid	N/A	Yes
M2/M1 [%]		91.0
Dist 3dB Peak [mm]		14.2

## Measurement Results

	Area Scan	Zoom Scan
psSAR1g [W/Kg]	0.133	<b>0.137</b>
psSAR10g [W/Kg]	0.079	<b>0.088</b>
Power Drift [dB]	N/A	-0.02



# Measurement Report for Band n66, BACK, Normal, CELL Main2

## Exposure Conditions

Band	Band n66	TSL Permittivity	39.0
Frequency [MHz]   Channel Number	1745.000   349000	TSL Conductivity [S/m]	1.34
Group   UID	5G NR FR1 FDD   10939-AAC	Phantom Section   TSL	Flat   HSL
Conversion Factor	9.05	Test Distance [mm]	10.00
Communication Configuration 5G NR (DFT-s-OFDM, 50% RB, 20 MHz, QPSK, 15 kHz) RBPosition:Mid AntennaCfg:SISO			

## Hardware Setup

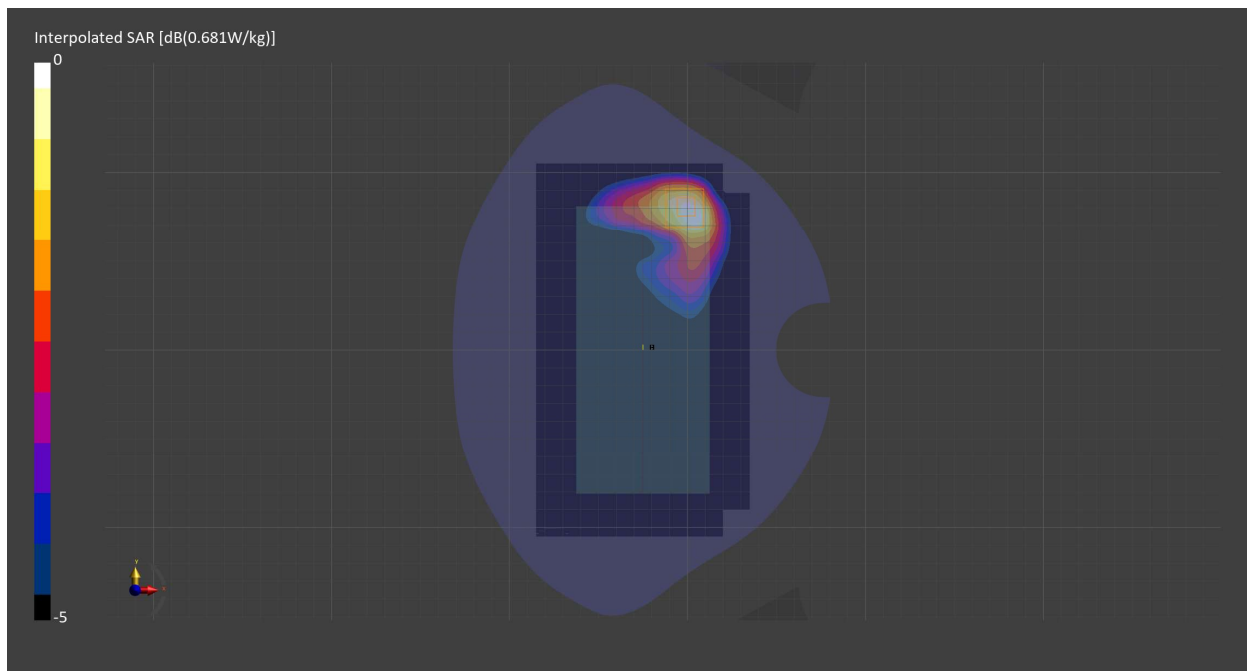
Probe   Calibration Date	EX3DV4 - SN7709   2022-12-12	Phantom	Twin-SAM V8.0 (30deg probe tilt) - SN1742
DAE   Calibration Date	DAE4 Sn1714   2022-11-23	TSL   Meas. Date	HBBL-600-10000   2024-Jan-16

## Scans Setup

	Area Scan	Zoom Scan
Grid Extents [mm]	120.0 x 210.0	30.0 x 30.0 x 30.0
Grid Steps [mm]	15.0 x 15.0	6.0 x 6.0 x 1.5
Sensor Surface [mm]	3.0	1.4
Graded Grid	N/A	Yes
M2/M1 [%]		84.3
Dist 3dB Peak [mm]		11.9

## Measurement Results

	Area Scan	Zoom Scan
psSAR1g [W/Kg]	0.356	<b>0.393</b>
psSAR10g [W/Kg]	0.209	<b>0.221</b>
Power Drift [dB]	N/A	-0.01



# Measurement Report for Band n66, EDGE BOTTOM, Normal, CELL Main2

## Exposure Conditions

<b>Band</b>	Band n66	<b>TSL Permittivity</b>	39.0
<b>Frequency [MHz]   Channel Number</b>	1745.000   349000	<b>TSL Conductivity [S/m]</b>	1.34
<b>Group   UID</b>	5G NR FR1 FDD   10939-AAC	<b>Phantom Section   TSL</b>	Flat   HSL
<b>Conversion Factor</b>	9.05	<b>Test Distance [mm]</b>	10.00
<b>Communication Configuration</b> 5G NR (DFT-s-OFDM, 50% RB, 20 MHz, QPSK, 15 kHz) RBPosition:Mid AntennaCfg:SISO			

## Hardware Setup

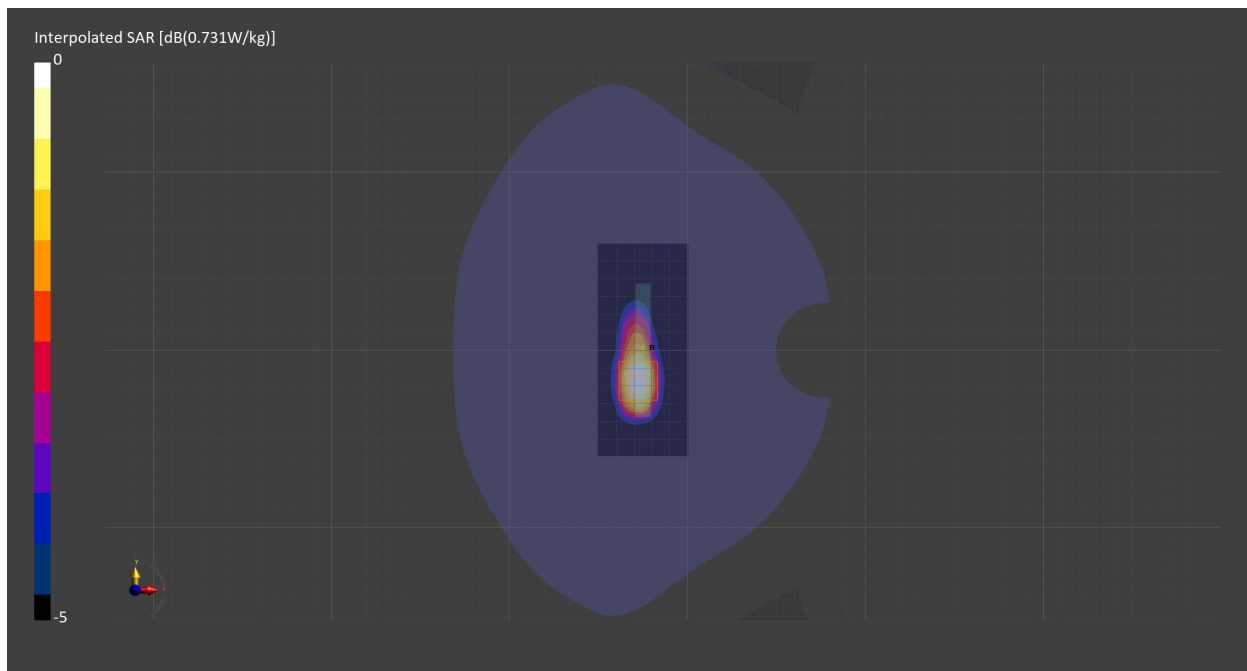
<b>Probe   Calibration Date</b>	EX3DV4 - SN7709   2022-12-12	<b>Phantom</b>	Twin-SAM V8.0 (30deg probe tilt) - SN1742
<b>DAE   Calibration Date</b>	DAE4 Sn1714   2022-11-23	<b>TSL   Meas. Date</b>	HBBL-600-10000   2024-Jan-16

## Scans Setup

	Area Scan	Zoom Scan
<b>Grid Extents [mm]</b>	51.0 x 120.0	30.0 x 30.0 x 30.0
<b>Grid Steps [mm]</b>	8.5 x 15.0	6.0 x 6.0 x 1.5
<b>Sensor Surface [mm]</b>	3.0	1.4
<b>Graded Grid</b>	N/A	Yes
<b>M2/M1 [%]</b>		85.4
<b>Dist 3dB Peak [mm]</b>		10.8

## Measurement Results

	Area Scan	Zoom Scan
<b>psSAR1g [W/Kg]</b>	0.395	<b>0.409</b>
<b>psSAR10g [W/Kg]</b>	0.218	<b>0.221</b>
<b>Power Drift [dB]</b>	N/A	-0.09



# Measurement Report for WLAN 2.4GHz, CHEEK, Normal, WiFi Chain 0

## Exposure Conditions

Band	WLAN 2.4GHz	TSL Permittivity	38.8
Frequency [MHz]   Channel Number	2437.000   6	TSL Conductivity [S/m]	1.82
Group   UID	WLAN   10415-AAA	Phantom Section   TSL	RightHead   HSL
Conversion Factor	7.66	Test Distance [mm]	0.00
Communication Configuration	IEEE 802.11b WiFi 2.4 GHz (DSSS, 1 Mbps, 99pc duty cycle)		

## Hardware Setup

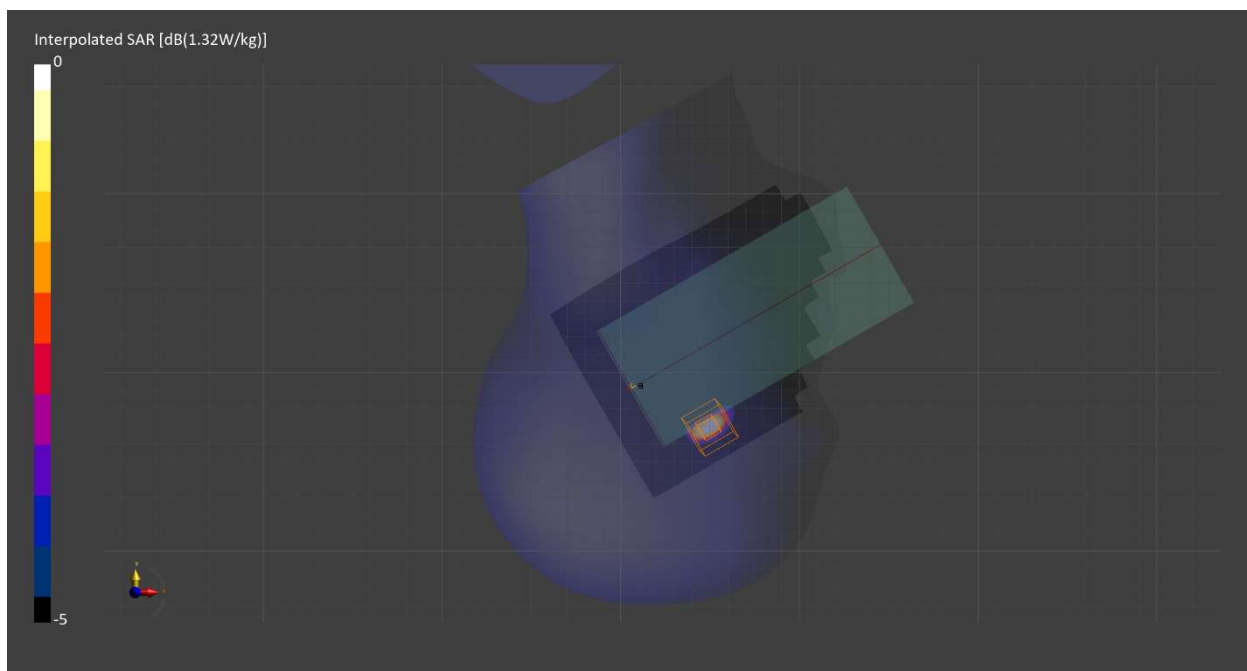
Probe   Calibration Date	EX3DV4 - SN7709   2023-11-30	Phantom	Twin-SAM V8.0 (30deg probe tilt) - SN1742
DAE   Calibration Date	DAE4 Sn1714   2023-11-22	TSL   Meas. Date	HBBL-600-10000   2024-Feb-19

## Scans Setup

	Area Scan	Zoom Scan
Grid Extents [mm]	120.0 x 200.0	30.0 x 30.0 x 30.0
Grid Steps [mm]	10.0 x 10.0	3.8 x 3.8 x 1.4
Sensor Surface [mm]	3.0	1.4
Graded Grid	N/A	Yes
M2/M1 [%]		74.1
Dist 3dB Peak [mm]		3.9

## Measurement Results

	Area Scan	Zoom Scan
psSAR1g [W/Kg]	0.458	<b>0.487</b>
psSAR10g [W/Kg]	0.174	<b>0.177</b>
Power Drift [dB]	N/A	0.02



# Measurement Report for WLAN 2.4GHz, BACK, Normal, WiFi Chain 0

## Exposure Conditions

Band	WLAN 2.4GHz	TSL Permittivity	38.8
Frequency [MHz]   Channel Number	2437.000   6	TSL Conductivity [S/m]	1.82
Group   UID	WLAN   10415-AAA	Phantom Section   TSL	Flat   HSL
Conversion Factor	7.66	Test Distance [mm]	10.00
Communication Configuration	IEEE 802.11b WiFi 2.4 GHz (DSSS, 1 Mbps, 99pc duty cycle)		

## Hardware Setup

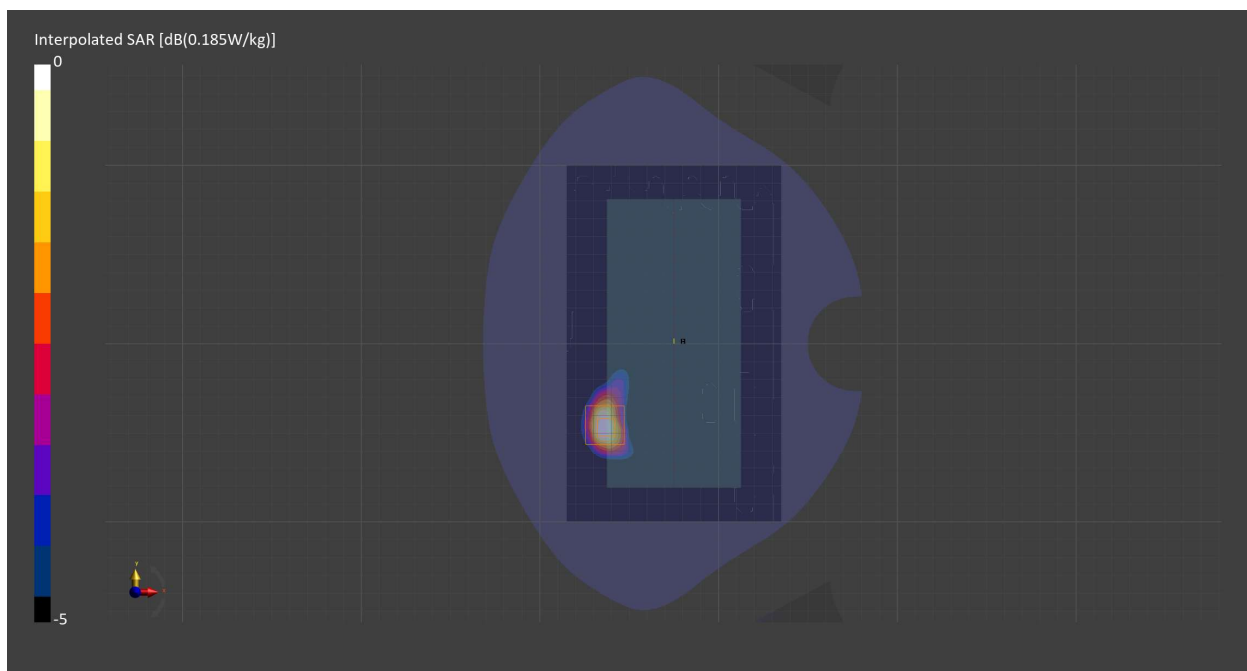
Probe   Calibration Date	EX3DV4 - SN7709   2023-11-30	Phantom	Twin-SAM V8.0 (30deg probe tilt) - SN1742
DAE   Calibration Date	DAE4 Sn1714   2023-11-22	TSL   Meas. Date	HBBL-600-10000   2024-Feb-19

## Scans Setup

	Area Scan	Zoom Scan
Grid Extents [mm]	120.0 x 200.0	30.0 x 30.0 x 30.0
Grid Steps [mm]	10.0 x 10.0	5.0 x 5.0 x 1.5
Sensor Surface [mm]	3.0	1.4
Graded Grid	N/A	Yes
M2/M1 [%]		81.5
Dist 3dB Peak [mm]		9.0

## Measurement Results

	Area Scan	Zoom Scan
psSAR1g [W/Kg]	0.092	<b>0.096</b>
psSAR10g [W/Kg]	0.044	<b>0.044</b>
Power Drift [dB]	N/A	-0.05



# Measurement Report for WLAN 2.4GHz, EDGE LEFT, Normal, WiFi Chain 0

## Exposure Conditions

Band	WLAN 2.4GHz	TSL Permittivity	38.8
Frequency [MHz]   Channel Number	2437.000   6	TSL Conductivity [S/m]	1.82
Group   UID	WLAN   10415-AAA	Phantom Section   TSL	Flat   HSL
Conversion Factor	7.66	Test Distance [mm]	10.00
Communication Configuration	IEEE 802.11b WiFi 2.4 GHz (DSSS, 1 Mbps, 99pc duty cycle)		

## Hardware Setup

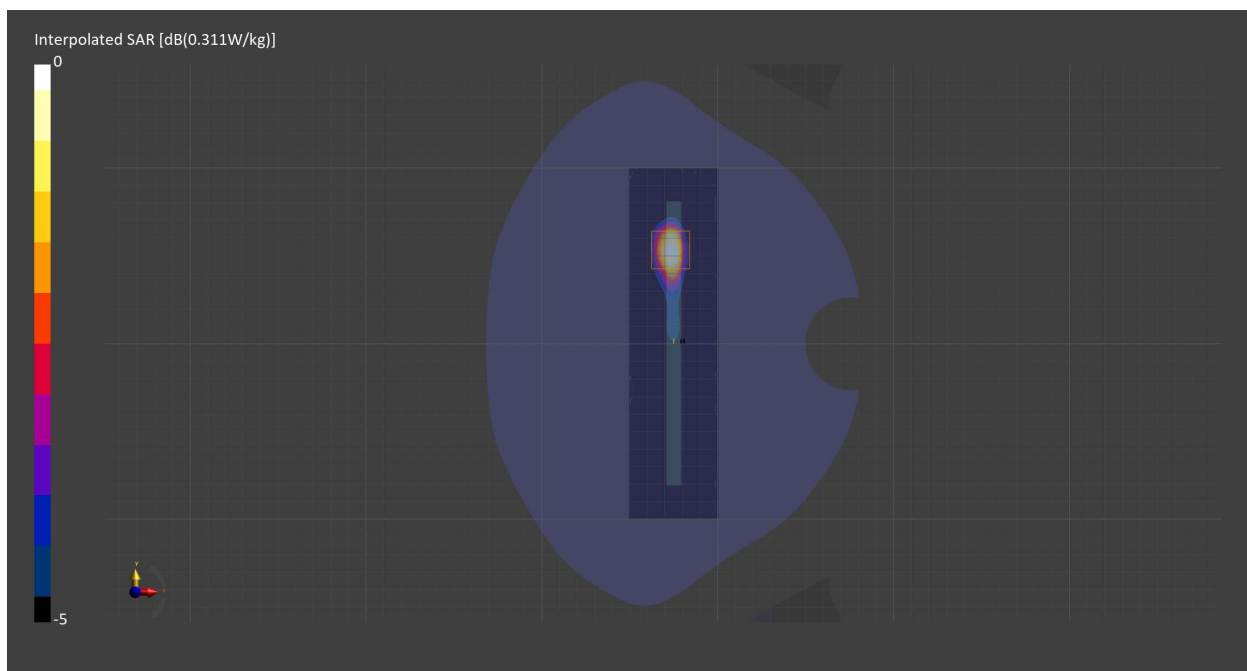
Probe   Calibration Date	EX3DV4 - SN7709   2023-11-30	Phantom	Twin-SAM V8.0 (30deg probe tilt) - SN1742
DAE   Calibration Date	DAE4 Sn1714   2023-11-22	TSL   Meas. Date	HBBL-600-10000   2024-Feb-19

## Scans Setup

	Area Scan	Zoom Scan
Grid Extents [mm]	51.0 x 200.0	30.0 x 30.0 x 30.0
Grid Steps [mm]	8.5 x 10.0	5.0 x 5.0 x 1.5
Sensor Surface [mm]	3.0	1.4
Graded Grid	N/A	Yes
M2/M1 [%]		81.0
Dist 3dB Peak [mm]		8.1

## Measurement Results

	Area Scan	Zoom Scan
psSAR1g [W/Kg]	0.155	<b>0.156</b>
psSAR10g [W/Kg]	0.069	<b>0.070</b>
Power Drift [dB]	N/A	-0.01



# Measurement Report for WLAN 2.4GHz, CHEEK, Simul, WiFi Chain 0

## Exposure Conditions

Band	WLAN 2.4GHz	TSL Permittivity	38.8
Frequency [MHz]   Channel Number	2437.000   6	TSL Conductivity [S/m]	1.82
Group   UID	WLAN   10415-AAA	Phantom Section   TSL	RightHead   HSL
Conversion Factor	7.66	Test Distance [mm]	0.00
Communication Configuration	IEEE 802.11b WiFi 2.4 GHz (DSSS, 1 Mbps, 99pc duty cycle)		

## Hardware Setup

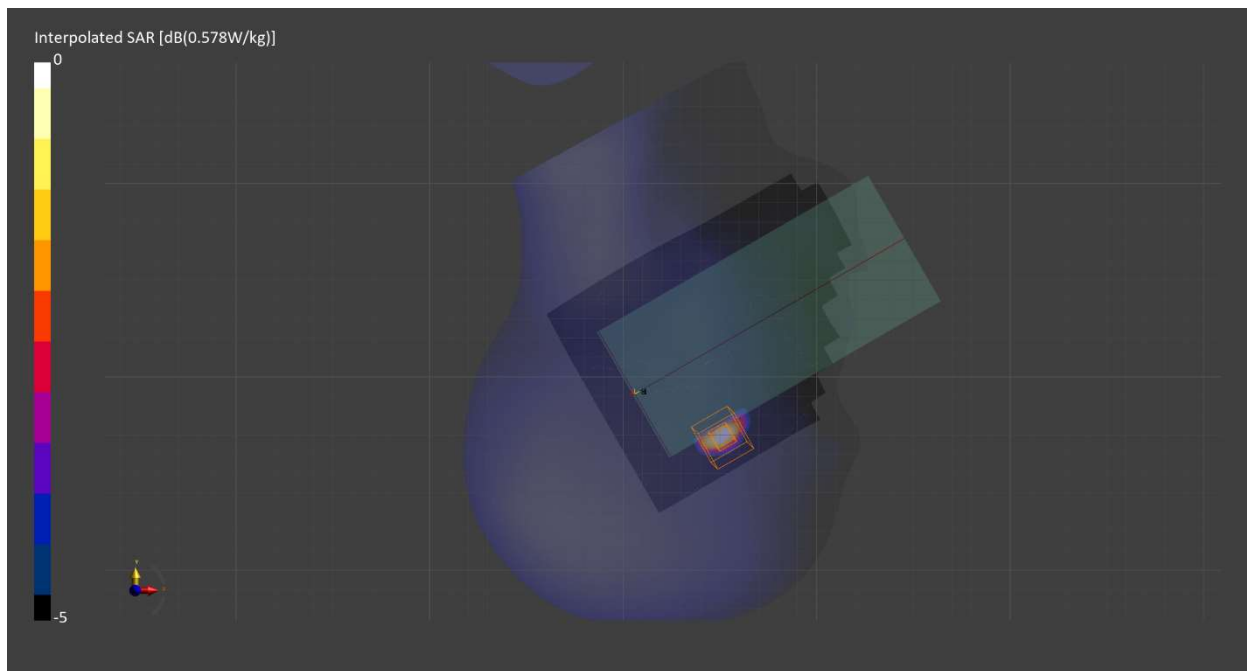
Probe   Calibration Date	EX3DV4 - SN7709   2023-11-30	Phantom	Twin-SAM V8.0 (30deg probe tilt) - SN1742
DAE   Calibration Date	DAE4 Sn1714   2023-11-22	TSL   Meas. Date	HBBL-600-10000   2024-Feb-19

## Scans Setup

	Area Scan	Zoom Scan
Grid Extents [mm]	120.0 x 200.0	30.0 x 30.0 x 30.0
Grid Steps [mm]	10.0 x 10.0	4.7 x 4.7 x 1.5
Sensor Surface [mm]	3.0	1.4
Graded Grid	N/A	Yes
M2/M1 [%]		78.4
Dist 3dB Peak [mm]		5.8

## Measurement Results

	Area Scan	Zoom Scan
psSAR1g [W/Kg]	0.224	<b>0.240</b>
psSAR10g [W/Kg]	0.089	<b>0.089</b>
Power Drift [dB]	N/A	0.00





# Measurement Report for WLAN 2.4GHz, BACK, Simul, WiFi Chain 0

## Exposure Conditions

Band	WLAN 2.4GHz	TSL Permittivity	38.8
Frequency [MHz]   Channel Number	2437.000   6	TSL Conductivity [S/m]	1.82
Group   UID	WLAN   10415-AAA	Phantom Section   TSL	Flat   HSL
Conversion Factor	7.66	Test Distance [mm]	10.00
Communication Configuration	IEEE 802.11b WiFi 2.4 GHz (DSSS, 1 Mbps, 99pc duty cycle)		

## Hardware Setup

Probe   Calibration Date	EX3DV4 - SN7709   2023-11-30	Phantom	Twin-SAM V8.0 (30deg probe tilt) - SN1742
DAE   Calibration Date	DAE4 Sn1714   2023-11-22	TSL   Meas. Date	HBBL-600-10000   2024-Feb-19

## Scans Setup

	Area Scan	Zoom Scan
Grid Extents [mm]	120.0 x 200.0	30.0 x 30.0 x 30.0
Grid Steps [mm]	10.0 x 10.0	5.0 x 5.0 x 1.5
Sensor Surface [mm]	3.0	1.4
Graded Grid	N/A	Yes
M2/M1 [%]		78.5
Dist 3dB Peak [mm]		8.0

## Measurement Results

	Area Scan	Zoom Scan
psSAR1g [W/Kg]	0.051	<b>0.051</b>
psSAR10g [W/Kg]	0.024	<b>0.024</b>
Power Drift [dB]	N/A	0.15

