

HAC-RF Emission

Communication System: UID 0, CW (0); Frequency: 2600 MHz; Duty Cycle: 1:1

Phantom section: RF Section

DASY5 Configuration:

- Probe: ER3DV6 - SN2509; ConvF(1, 1, 1) @ 2600 MHz; Calibrated: 5/22/2018
- Sensor-Surface: (Fix Surface)
- Electronics: DAE4 Sn1547; Calibrated: 5/3/2018
- Phantom: HAC Test Arch with AMCC; Type: SD HAC P01 BB
- Measurement SW: DASY52, Version 52.10 (1);SEMCAD X Version 14.6.11 (7439)

Dipole E-Field Measurement 2600MHz/2600 MHz/Hearing Aid Compatibility Test at 15mm distance (41x181x1):

Interpolated grid: dx=0.5000 mm, dy=0.5000 mm

Device Reference Point: 0, 0, -6.3 mm

Reference Value = 75.71 V/m; Power Drift = 0.07 dB

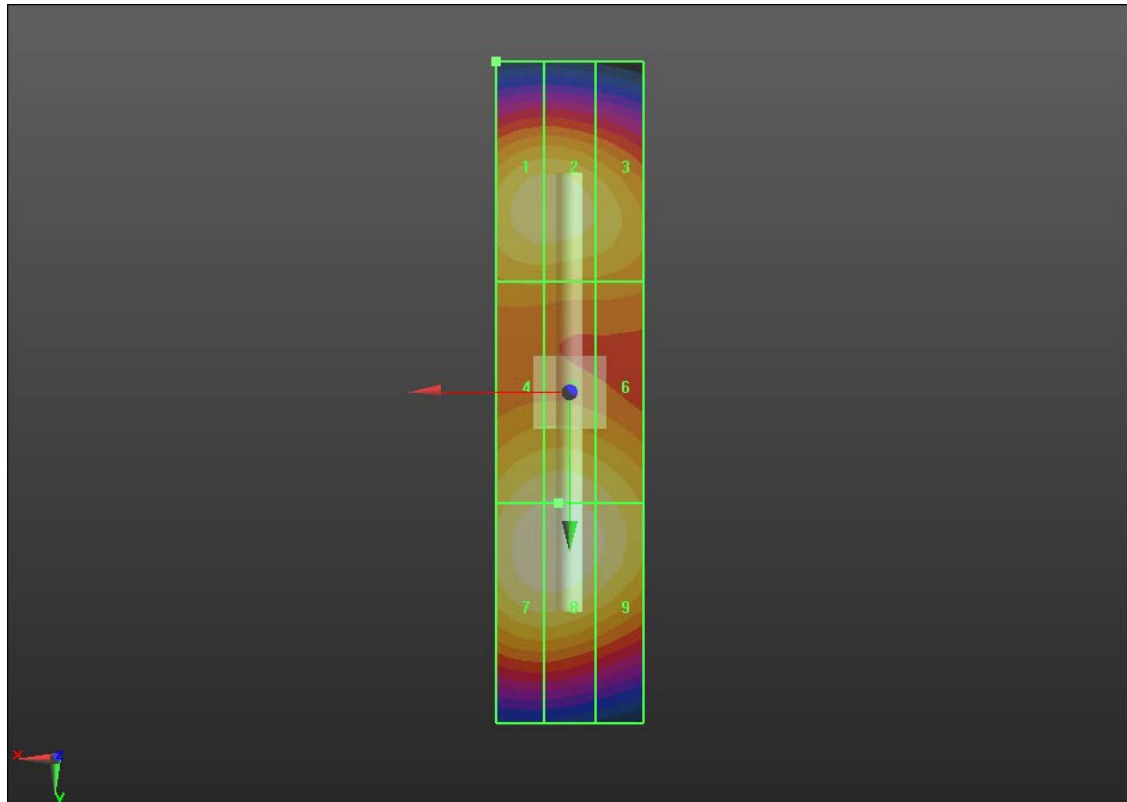
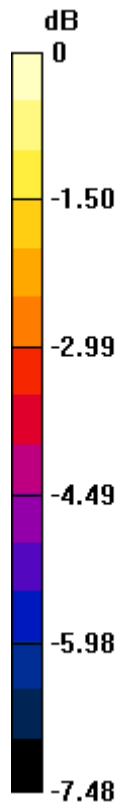
PMR not calibrated. PMF = 1.000 is applied.

E-field emissions = 98.99 V/m

Near-field category: **M3 (AWF 0 dB)**

PMF scaled E-field

Grid 1 M3 92.84 V/m	Grid 2 M3 92.88 V/m	Grid 3 M3 88.32 V/m
Grid 4 M3 94.04 V/m	Grid 5 M3 94.63 V/m	Grid 6 M3 91.65 V/m
Grid 7 M3 98.61 V/m	Grid 8 M3 98.99 V/m	Grid 9 M3 95.04 V/m



0 dB = 98.99 V/m = 39.91 dBV/m