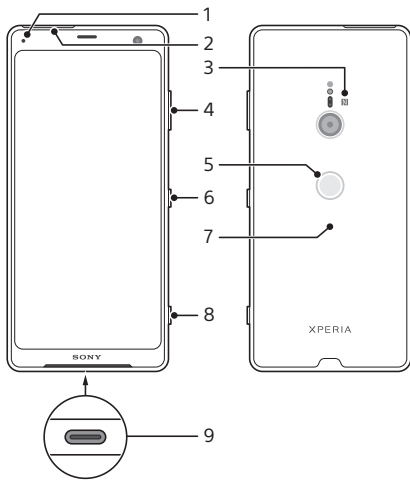
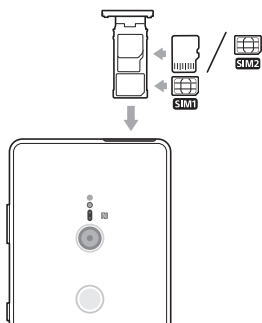


Device basics



- | | |
|---|--------------------------------|
| 1 | Charging/Notification light |
| 2 | Nano SIM/Memory card slot |
| 3 | NFC |
| 4 | Volume/Zoom key |
| 5 | Fingerprint sensor |
| 6 | Power key |
| 7 | Wireless charging coil |
| 8 | Camera key |
| 9 | USB port/Charger/Audio adapter |

To insert either two nano SIM cards or a nano SIM card and a memory card



⚠ Do not cut your SIM cards, as this may damage your device.

- 1 Drag out the SIM card tray.
- 2 Place the main SIM card securely in position for SIM1, as shown in the illustration.
- 3 Place either the second SIM card or the memory card securely in the tray, in the correct orientation as shown in the illustration.

- 4 Gently push the SIM card tray back into the slot until it fits into place.

To turn on your device

⚠ It is recommended to charge the battery for at least 30 minutes before you turn on your device for the first time. It is important to use the USB Type-C™ cable provided when charging your device, as other types of USB cables can damage your device.

- 1 Press and hold down the power key until the device vibrates.
- 2 Wait a moment for the device to start.

To activate the screen

- Briefly press the power key.

Screen protection

⚠ Before using your device, remove all protection films to enable full functionality.

Screen covers and protectors may help you protect your device against damage. We recommend you use only those screen covers intended for your Xperia™ device. The use of third party screen protection accessories may prevent your device from working correctly by covering sensors, lenses, speakers, or microphones and can invalidate the warranty.

Support for you

Use the Support app to find your device's model name, software information, help topics and support tools. Visit support.sonymobile.com from the Support app or any browser for user guides, troubleshooting tips, support forum and support contact information.

⚠ You can find support contact information in the Support app even without a network connection. The Support app is not available in all countries and regions.

To access the Support app

- Find and tap .

Warranty, SAR and usage guidelines

For information about warranty, SAR (Specific Absorption Rate) and safety guidelines, please read the Important information provided under Settings > System > About phone > Legal information on your device.

Transferring contacts and content

For transferring contacts, messages, photos or other data from an old device to your new device, we recommend that you use the Xperia Transfer Mobile application. On your new device you will find it in Settings > System. Visit <https://www.sonymobile.com/xperiatransfer> for more information.

To view the CE marking and the FCC ID

SONY[®]



- 1 Drag out the SIM card tray.
- 2 Drag out the label strip in the same way. To see the full text of the EU declaration of conformity, visit: <http://www.compliance.sony.de/>.

To view the regulatory compliance mark

- Open the phone dialer, then enter ***#07#**.

Legal information

Publication number: 1315-7031.1

This Startup guide is published by Sony Mobile Communications Inc. or its local affiliated company, without any warranty. Improvements and changes to this Startup guide necessitated by typographical errors, inaccuracies of current information, or improvements to programs and/or equipment, may be made by Sony Mobile Communications Inc. at any time and without notice. Such changes will, however, be incorporated into new editions of this Startup guide. All illustrations are for illustration only and may not accurately depict the actual device.

See regulatory information such as the device CE marking in the relevant label tray in the device. All product and company names mentioned herein are the trademarks or registered trademarks of their respective owners. Any rights not expressly granted herein are reserved. Visit <https://www.sonymobile.com/global-en/legal/> for more information.

Manufacturer: Sony Mobile Communications Inc., 4-12-3 Higashi-Shinagawa, Shinagawa-ku, Tokyo 140-0002, Japan. For EU product compliance: Sony Belgium, bijkantoor van Sony Europe Limited, Da Vincielaan 7-D1, 1935 Zaventem, Belgium.

Note: Sony Mobile advises users to backup their personal data information. Some services are network- or subscription-dependent. Please contact your network operator or our call centre for details.

© 2018 Sony Mobile Communications Inc. All rights reserved.

Supported frequency bands

Some frequency bands might be turned off in certain markets or by certain operators.

You can find your model number under Settings > System > About phone.

H9436/H9493

UMTS HSPA+ (Bands 1, 2, 4, 5, 6, 8, 19) GSM GPRS/EDGE 850, 900, 1800, 1900 LTE (Bands 1, 2, 3, 4, 5, 7, 8, 12, 13, 17, 19, 20, 26, 28, 29, 32, 38, 39, 40, 41, 46, 66) WLAN, 2.4G/5G, NFC

GSM 850/900 : Power Class 4, DCS(1800)/PCS(1900) : Power Class 1, UMTS : Power Class 3, LTE : Power Class 3, 2.4GHz<100mW, 5.15-5.35GHz<200mW, 5.47-5.725GHz<200mW, 5.735-5.835GHz<25mW, NFC 13.56MHz

Startup guide

Xperia XZ2A
H9436/H9493

XPERIA

CE



1315-7031.1

Printed in XXX (Printers logotype)