

Measurement Report for GSM 850, CHEEK, Normal, Main Ant 1

Exposure Conditions

Band	GSM 850	TSL Permittivity	43.1
Frequency [MHz] Channel Number	836.6 190	TSL Conductivity [S/m]	0.947
Group UID	GSM 10090-DAC	Phantom Section TSL	LeftHead HSL
Conversion Factor	9.82	Test Distance [mm]	0.00
Communication Configuration	GPRS-FDD (TDMA, GMSK, TN 0-4)		

Hardware Setup

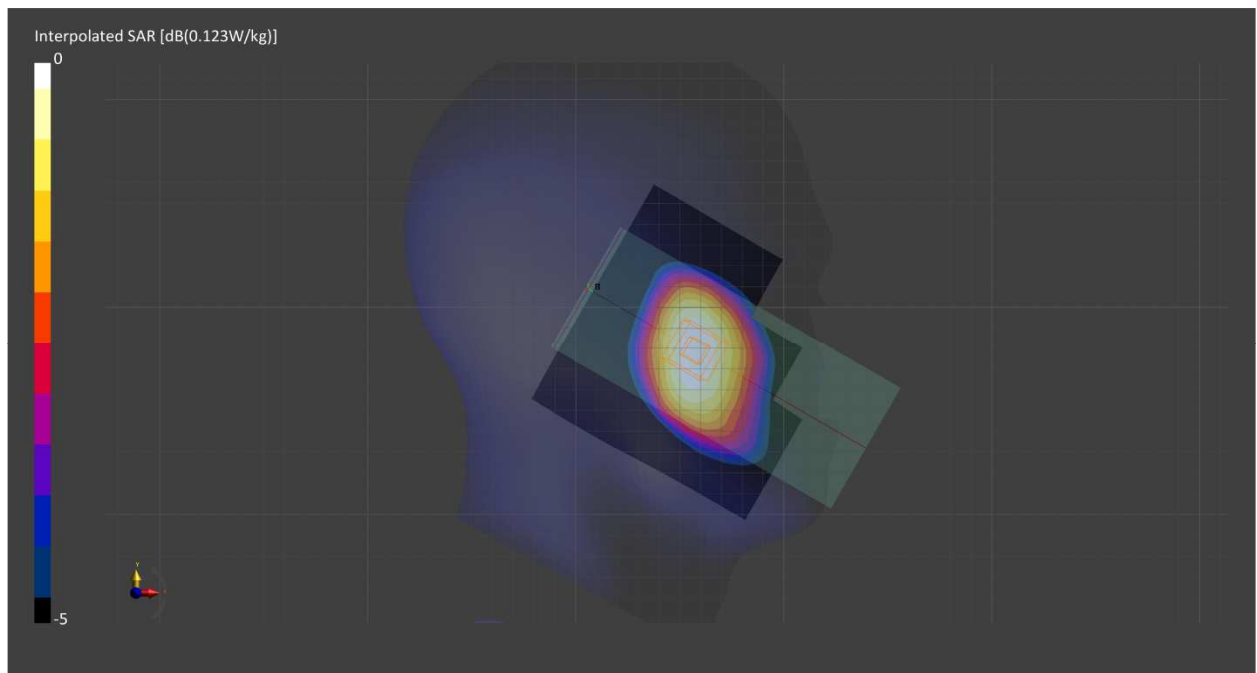
Probe Calibration Date	EX3DV4 - SN7711 2022-03-11	Phantom	Twin-SAM V5.0 (30deg probe tilt) - SN1742
DAE Calibration Date	DAE4 Sn1716 2022-03-08	TSL Meas. Date	HBBL-600-10000 2022-Aug-03

Scans Setup

	Area Scan	Zoom Scan
Grid Extents [mm]	120.0 x 120.0	30.0 x 30.0 x 30.0
Grid Steps [mm]	15.0 x 15.0	6.0 x 6.0 x 1.5
Sensor Surface [mm]	3.0	1.4
Graded Grid	Yes	Yes
M2/M1 [%]		94.3
Dist 3dB Peak [mm]		> 15.0

Measurement Results

	Area Scan	Zoom Scan
psSAR1g [W/Kg]	0.108	0.115
psSAR10g [W/Kg]	0.075	0.088
Power Drift [dB]	-0.02	0.00



Measurement Report for GSM 850, BACK, Normal, Main Ant 1

Exposure Conditions

Band	GSM 850	TSL Permittivity	43.1
Frequency [MHz] Channel Number	836.6 190	TSL Conductivity [S/m]	0.947
Group UID	GSM 10090-DAC	Phantom Section TSL	Flat HSL
Conversion Factor	9.82	Test Distance [mm]	10.00
Communication Configuration	GPRS-FDD (TDMA, GMSK, TN 0-4)		

Hardware Setup

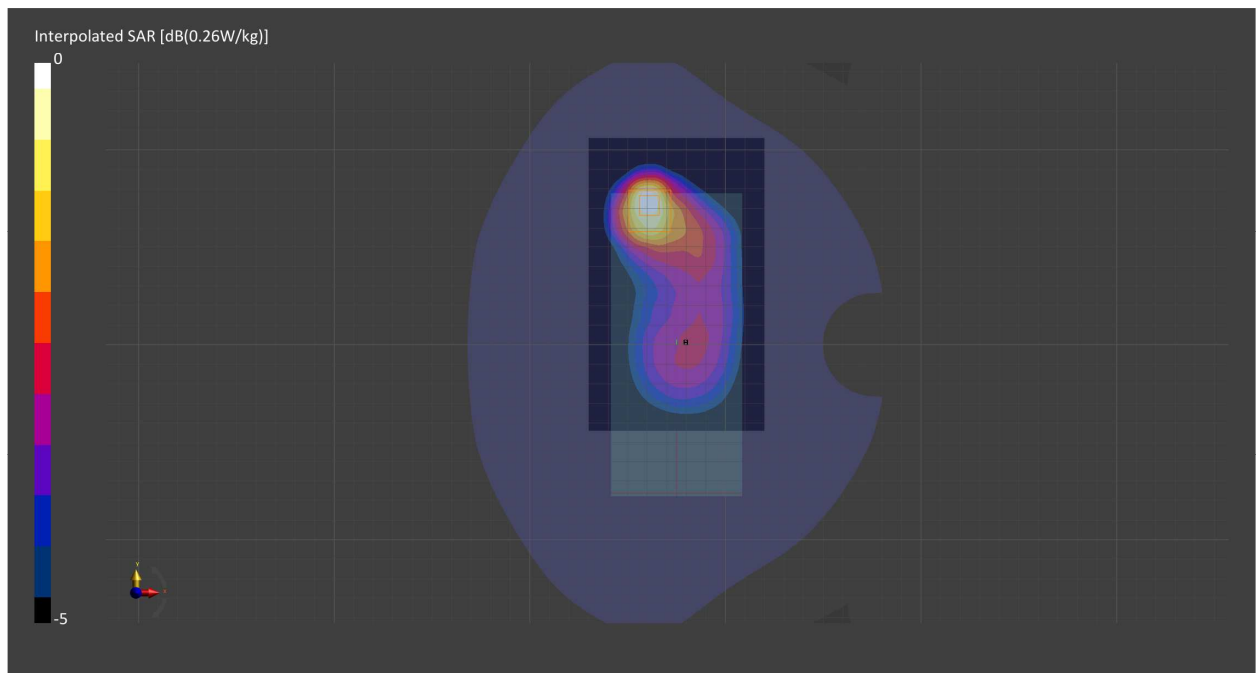
Probe Calibration Date	EX3DV4 - SN7711 2022-03-11	Phantom	Twin-SAM V5.0 (30deg probe tilt) - SN1742
DAE Calibration Date	DAE4 Sn1716 2022-03-08	TSL Meas. Date	HBBL-600-10000 2022-Aug-03

Scans Setup

	Area Scan	Zoom Scan
Grid Extents [mm]	90.0 x 150.0	30.0 x 30.0 x 30.0
Grid Steps [mm]	15.0 x 15.0	6.0 x 6.0 x 1.5
Sensor Surface [mm]	3.0	1.4
Graded Grid	Yes	Yes
M2/M1 [%]		80.6
Dist 3dB Peak [mm]		13.2

Measurement Results

	Area Scan	Zoom Scan
psSAR1g [W/Kg]	0.218	0.219
psSAR10g [W/Kg]	0.137	0.124
Power Drift [dB]	-0.01	-0.04



Measurement Report for GSM 850, BACK, Normal, Main Ant 1

Exposure Conditions

Band	GSM 850	TSL Permittivity	43.1
Frequency [MHz] Channel Number	836.6 190	TSL Conductivity [S/m]	0.947
Group UID	GSM 10090-DAC	Phantom Section TSL	Flat HSL
Conversion Factor	9.82	Test Distance [mm]	10.00
Communication Configuration	GPRS-FDD (TDMA, GMSK, TN 0-4)		

Hardware Setup

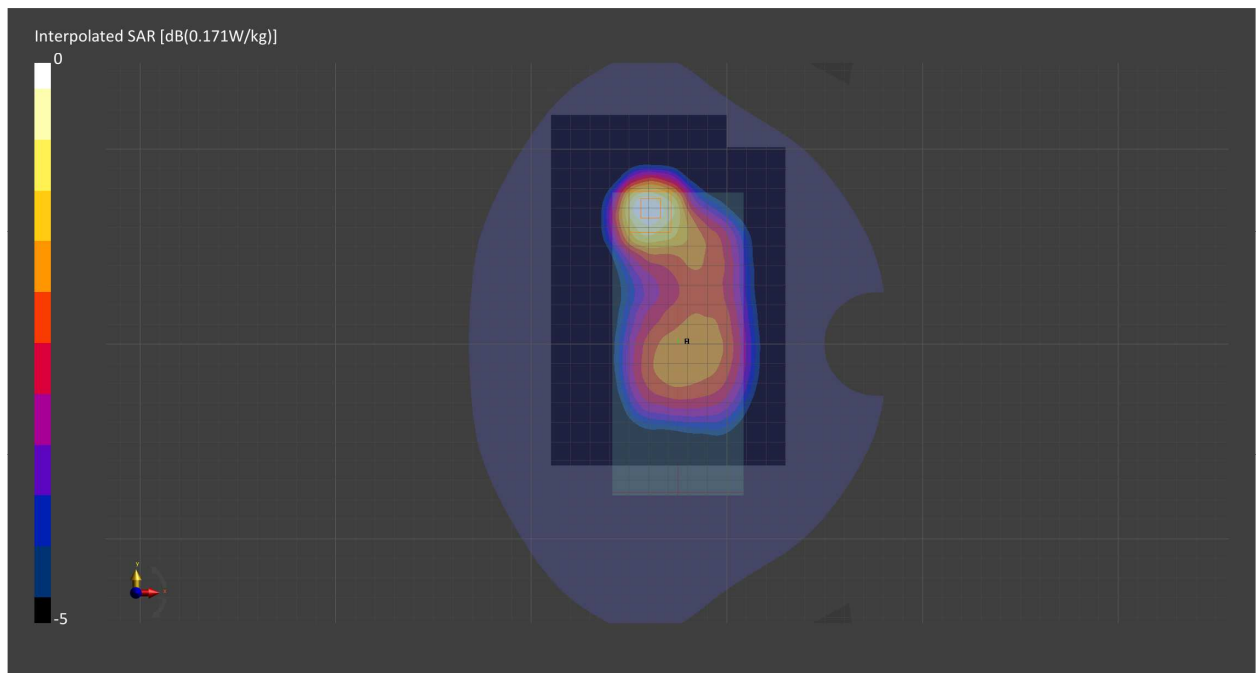
Probe Calibration Date	EX3DV4 - SN7711 2022-03-11	Phantom	Twin-SAM V5.0 (30deg probe tilt) - SN1742
DAE Calibration Date	DAE4 Sn1716 2022-03-08	TSL Meas. Date	HBBL-600-10000 2022-Aug-03

Scans Setup

	Area Scan	Zoom Scan
Grid Extents [mm]	120.0 x 180.0	30.0 x 30.0 x 30.0
Grid Steps [mm]	15.0 x 15.0	6.0 x 6.0 x 1.5
Sensor Surface [mm]	3.0	1.4
Graded Grid	Yes	Yes
M2/M1 [%]		81.3
Dist 3dB Peak [mm]		13.7

Measurement Results

	Area Scan	Zoom Scan
psSAR1g [W/Kg]	0.148	0.158
psSAR10g [W/Kg]	0.097	0.090
Power Drift [dB]	-0.00	0.02



Measurement Report for PCS 1900, CHEEK, Normal, Main Ant 2

Exposure Conditions

Band	PCS 1900	TSL Permittivity	38.5
Frequency [MHz] Channel Number	1880.0 661	TSL Conductivity [S/m]	1.43
Group UID	GSM 10090-DAC	Phantom Section TSL	LeftHead HSL
Conversion Factor	7.94	Test Distance [mm]	0.00
Communication Configuration	GPRS-FDD (TDMA, GMSK, TN 0-4)		

Hardware Setup

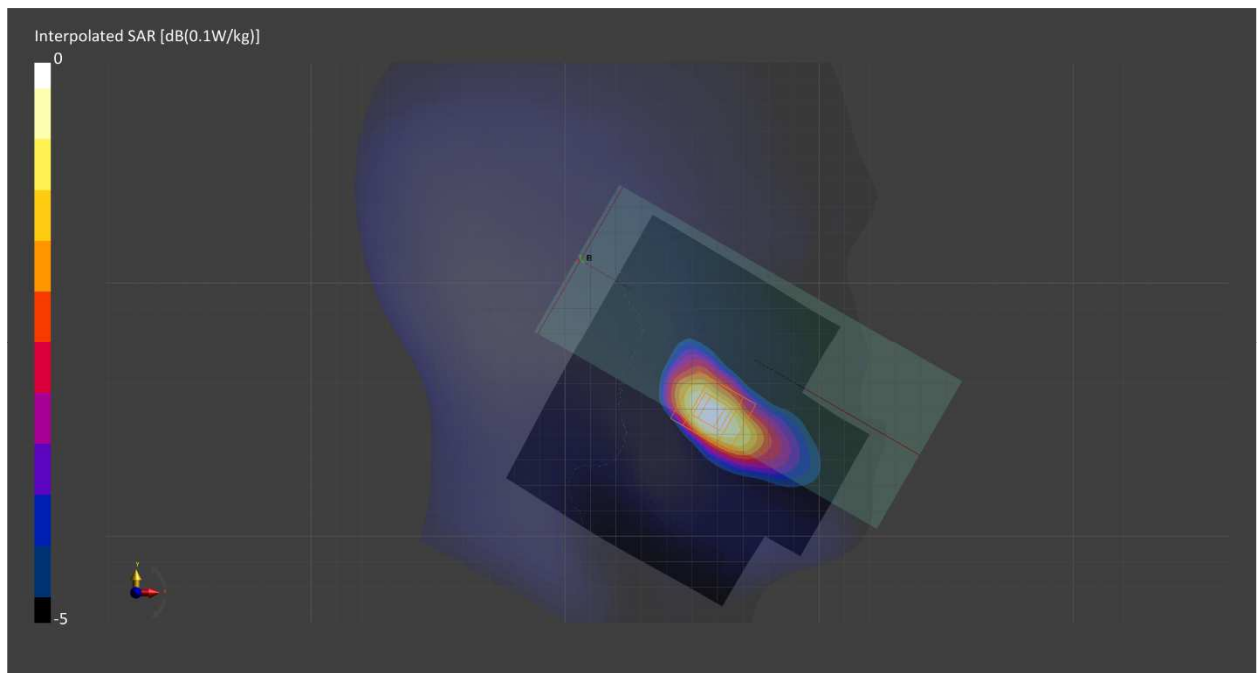
Probe Calibration Date	EX3DV4 - SN7549 2022-02-21	Phantom	Twin-SAM V8.0 (30deg probe tilt) - SN2084
DAE Calibration Date	DAE4 Sn1715 2022-02-22	TSL Meas. Date	HBBL-600-10000 2022-Aug-03

Scans Setup

	Area Scan	Zoom Scan
Grid Extents [mm]	120.0 x 120.0	30.0 x 30.0 x 30.0
Grid Steps [mm]	15.0 x 15.0	6.0 x 6.0 x 1.5
Sensor Surface [mm]	3.0	1.4
Graded Grid	Yes	Yes
M2/M1 [%]		87.9
Dist 3dB Peak [mm]		> 15.0

Measurement Results

	Area Scan	Zoom Scan
psSAR1g [W/Kg]	0.021	0.021
psSAR10g [W/Kg]	0.012	0.012
Power Drift [dB]	-0.34	0.12



Measurement Report for PCS 1900, FRONT, Normal, Main Ant 2

Exposure Conditions

Band	PCS 1900	TSL Permittivity	38.5
Frequency [MHz] Channel Number	1880.0 661	TSL Conductivity [S/m]	1.43
Group UID	GSM 10090-DAC	Phantom Section TSL	Flat HSL
Conversion Factor	7.94	Test Distance [mm]	10.00
Communication Configuration	GPRS-FDD (TDMA, GMSK, TN 0-4)		

Hardware Setup

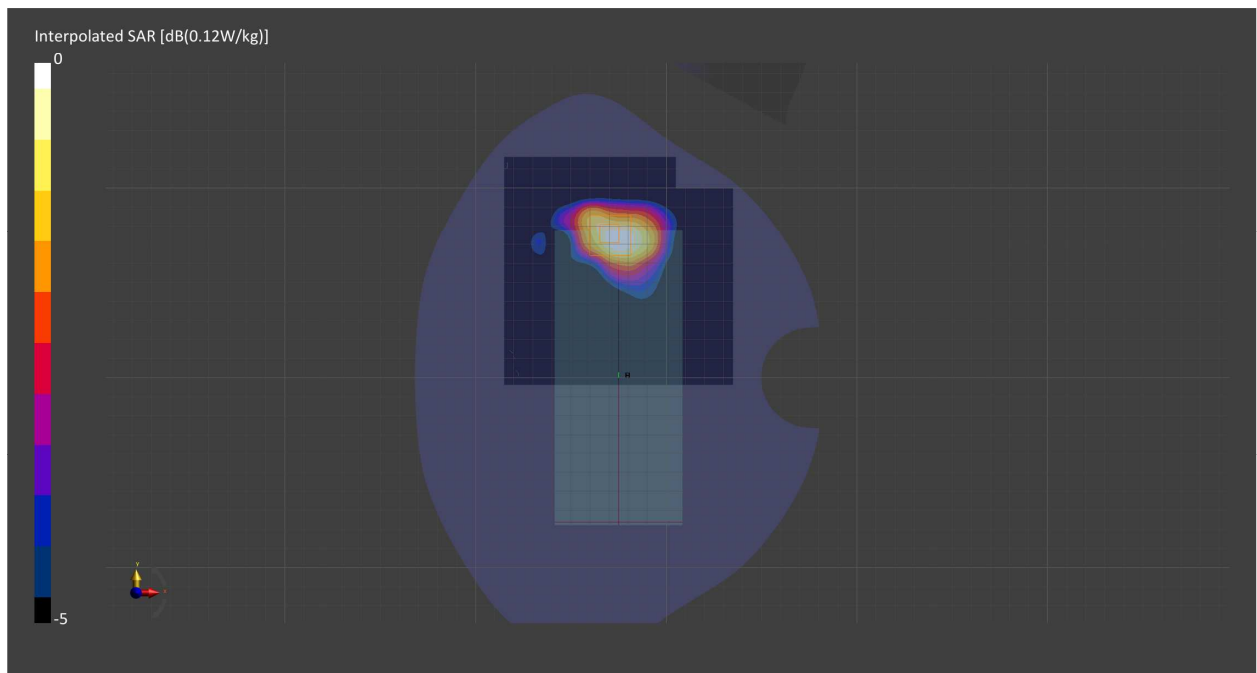
Probe Calibration Date	EX3DV4 - SN7549 2022-02-21	Phantom	Twin-SAM V8.0 (30deg probe tilt) - SN2084
DAE Calibration Date	DAE4 Sn1715 2022-02-22	TSL Meas. Date	HBBL-600-10000 2022-Aug-03

Scans Setup

	Area Scan	Zoom Scan
Grid Extents [mm]	120.0 x 120.0	30.0 x 30.0 x 30.0
Grid Steps [mm]	15.0 x 15.0	6.0 x 6.0 x 1.5
Sensor Surface [mm]	3.0	1.4
Graded Grid	Yes	Yes
M2/M1 [%]		82.1
Dist 3dB Peak [mm]		11.3

Measurement Results

	Area Scan	Zoom Scan
psSAR1g [W/Kg]	0.099	0.104
psSAR10g [W/Kg]	0.058	0.060
Power Drift [dB]	-0.01	0.02



Measurement Report for PCS 1900, EDGE BOTTOM, Normal, Main Ant 2

Exposure Conditions

Band	PCS 1900	TSL Permittivity	38.5
Frequency [MHz] Channel Number	1880.0 661	TSL Conductivity [S/m]	1.43
Group UID	GSM 10090-DAC	Phantom Section TSL	Flat HSL
Conversion Factor	7.94	Test Distance [mm]	10.00
Communication Configuration	GPRS-FDD (TDMA, GMSK, TN 0-4)		

Hardware Setup

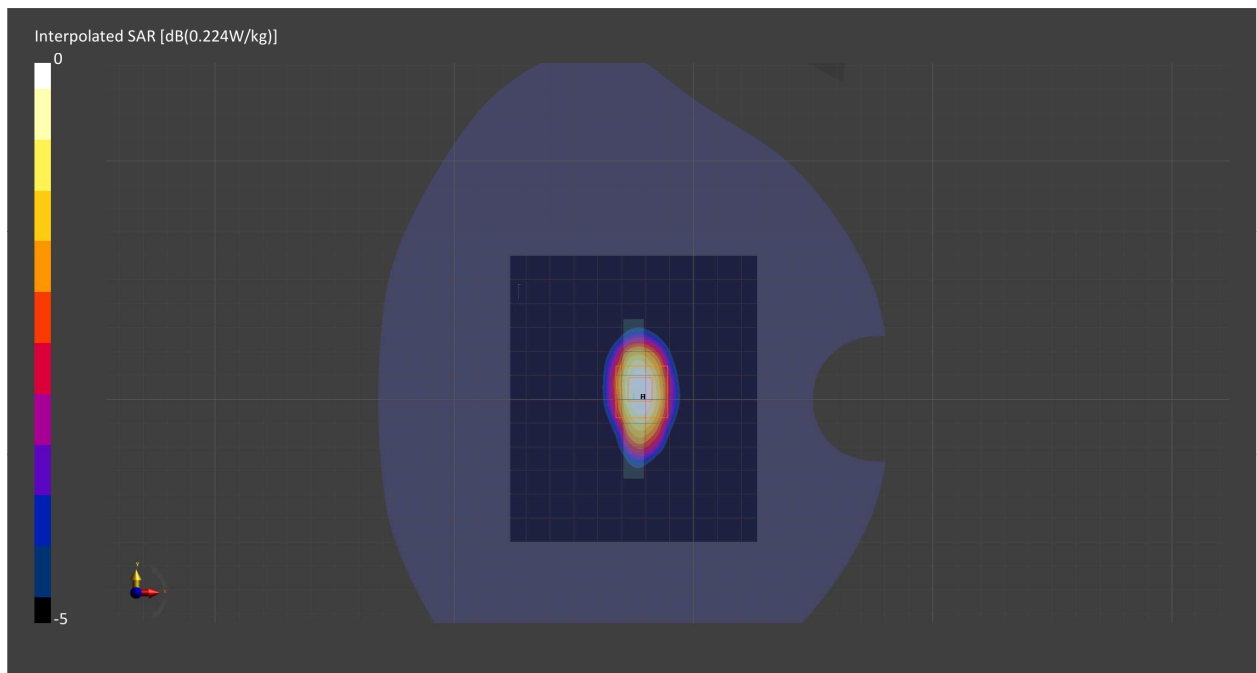
Probe Calibration Date	EX3DV4 - SN7549 2022-02-21	Phantom	Twin-SAM V8.0 (30deg probe tilt) - SN2084
DAE Calibration Date	DAE4 Sn1715 2022-02-22	TSL Meas. Date	HBBL-600-10000 2022-Aug-03

Scans Setup

	Area Scan	Zoom Scan
Grid Extents [mm]	103.2 x 120.0	30.0 x 30.0 x 30.0
Grid Steps [mm]	8.6 x 15.0	6.0 x 6.0 x 1.5
Sensor Surface [mm]	3.0	1.4
Graded Grid	Yes	Yes
M2/M1 [%]		81.1
Dist 3dB Peak [mm]		12.1

Measurement Results

	Area Scan	Zoom Scan
psSAR1g [W/Kg]	0.183	0.190
psSAR10g [W/Kg]	0.102	0.106
Power Drift [dB]	-0.01	-0.02



Measurement Report for PCS 1900, EDGE BOTTOM, Normal, Main Ant 2

Exposure Conditions

Band	PCS 1900	TSL Permittivity	38.5
Frequency [MHz] Channel Number	1880.0 661	TSL Conductivity [S/m]	1.43
Group UID	GSM 10024-DAC	Phantom Section TSL	Flat HSL
Conversion Factor	7.94	Test Distance [mm]	10.00
Communication Configuration	GPRS-FDD (TDMA, GMSK, TN 0-1)		

Hardware Setup

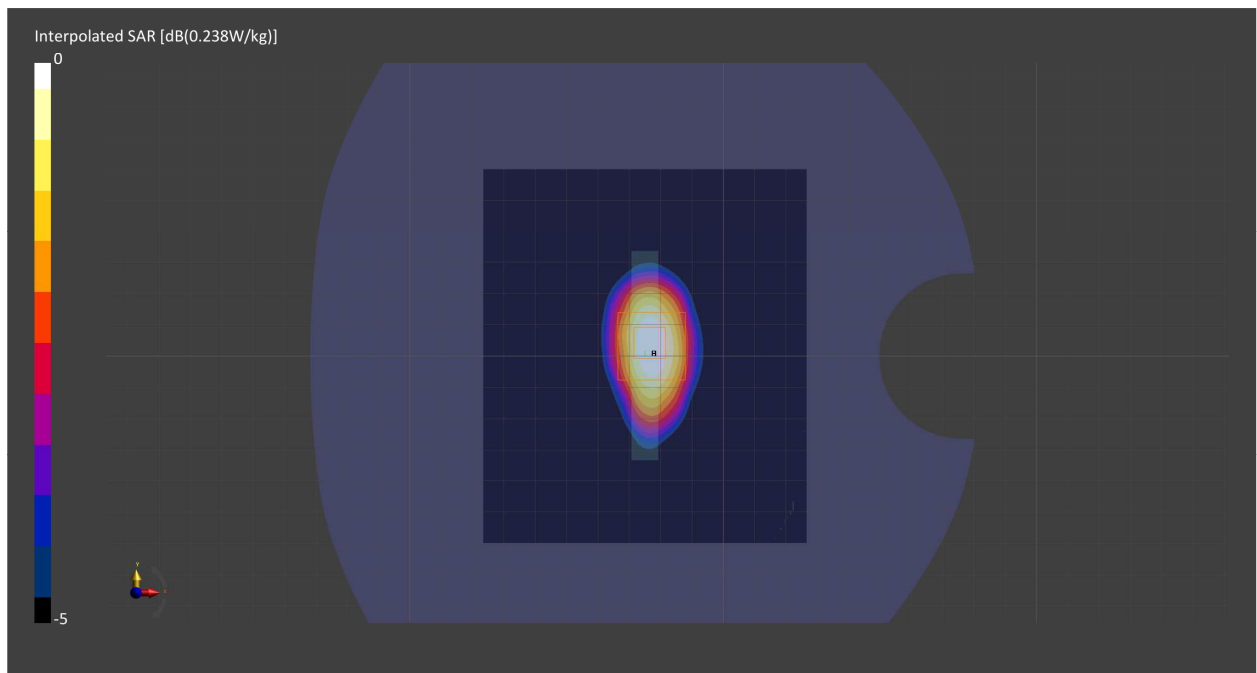
Probe Calibration Date	EX3DV4 - SN7549 2022-02-21	Phantom	Twin-SAM V8.0 (30deg probe tilt) - SN2084
DAE Calibration Date	DAE4 Sn1715 2022-02-22	TSL Meas. Date	HBBL-600-10000 2022-Aug-03

Scans Setup

	Area Scan	Zoom Scan
Grid Extents [mm]	103.2 x 120.0	30.0 x 30.0 x 30.0
Grid Steps [mm]	8.6 x 15.0	6.0 x 6.0 x 1.5
Sensor Surface [mm]	3.0	1.4
Graded Grid	Yes	Yes
M2/M1 [%]		80.7
Dist 3dB Peak [mm]		12.0

Measurement Results

	Area Scan	Zoom Scan
psSAR1g [W/Kg]	0.195	0.209
psSAR10g [W/Kg]	0.109	0.116
Power Drift [dB]	0.19	-0.07



Measurement Report for Band 2, UTRA/FDD, CHEEK, Normal, Main Ant 2

Exposure Conditions

Band	Band 2, UTRA/FDD	TSL Permittivity	38.5
Frequency [MHz] Channel Number	1880.0 9400	TSL Conductivity [S/m]	1.43
Group UID	WCDMA 10011-CAB	Phantom Section TSL	RightHead HSL
Conversion Factor	7.94	Test Distance [mm]	0.00
Communication Configuration	UMTS-FDD (WCDMA)		

Hardware Setup

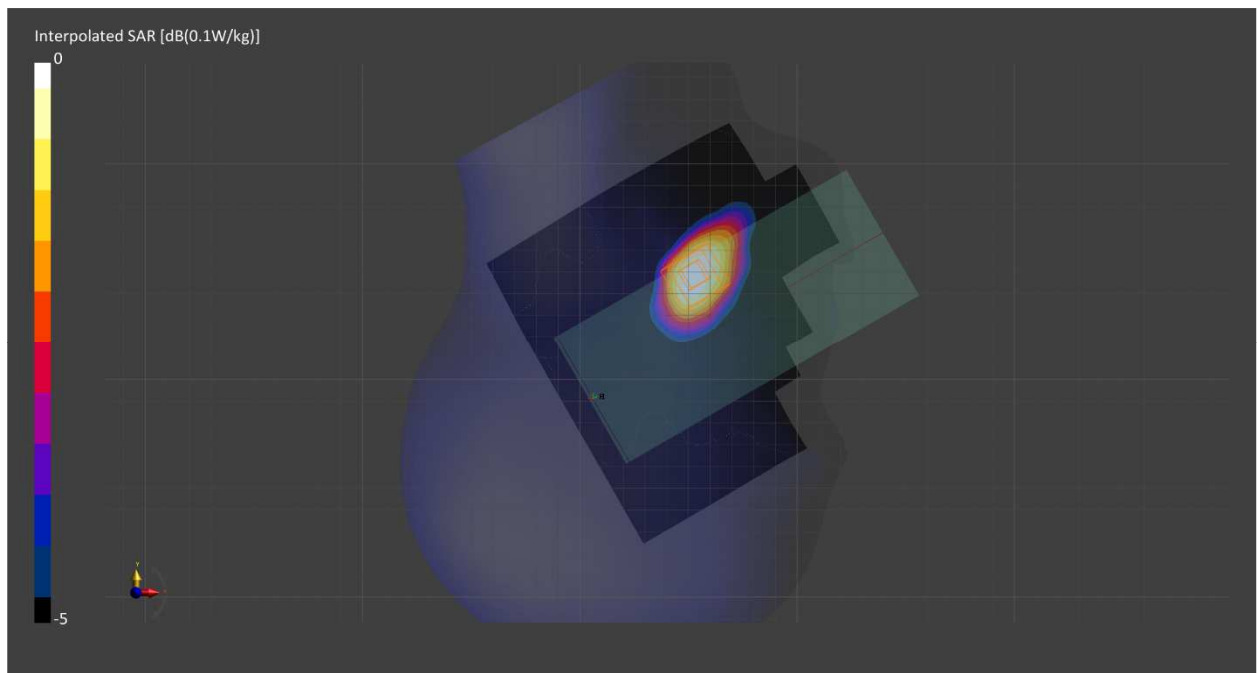
Probe Calibration Date	EX3DV4 - SN7549 2022-02-21	Phantom	Twin-SAM V8.0 (30deg probe tilt) - SN2084
DAE Calibration Date	DAE4 Sn1715 2022-02-22	TSL Meas. Date	HBBL-600-10000 2022-Aug-03

Scans Setup

	Area Scan	Zoom Scan
Grid Extents [mm]	150.0 x 150.0	30.0 x 30.0 x 30.0
Grid Steps [mm]	15.0 x 15.0	6.0 x 6.0 x 1.5
Sensor Surface [mm]	3.0	1.4
Graded Grid	Yes	Yes
M2/M1 [%]		85.8
Dist 3dB Peak [mm]		> 15.0

Measurement Results

	Area Scan	Zoom Scan
psSAR1g [W/Kg]	0.040	0.043
psSAR10g [W/Kg]	0.024	0.026
Power Drift [dB]	-0.04	-0.01



Measurement Report for Band 2, UTRA/FDD, FRONT, Normal, Main Ant 2

Exposure Conditions

Band	Band 2, UTRA/FDD	TSL Permittivity	38.5
Frequency [MHz] Channel Number	1880.0 9400	TSL Conductivity [S/m]	1.43
Group UID	WCDMA 10011-CAB	Phantom Section TSL	Flat HSL
Conversion Factor	7.94	Test Distance [mm]	10.00
Communication Configuration	UMTS-FDD (WCDMA)		

Hardware Setup

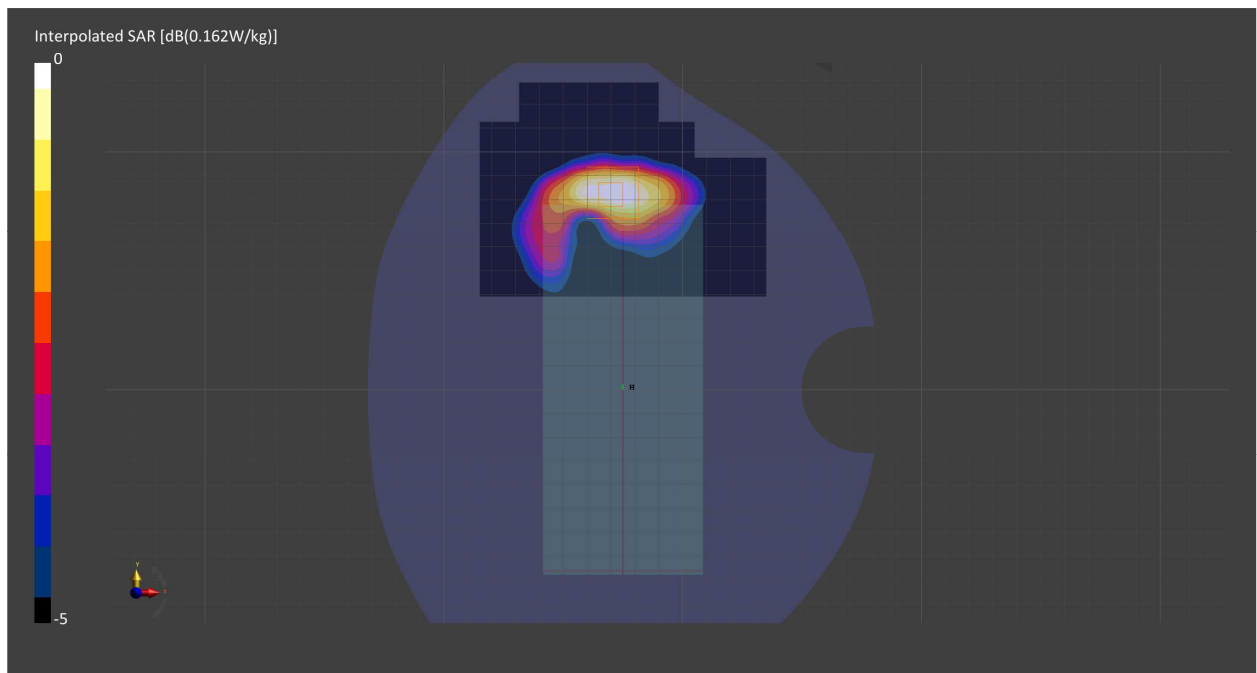
Probe Calibration Date	EX3DV4 - SN7549 2022-02-21	Phantom	Twin-SAM V8.0 (30deg probe tilt) - SN2084
DAE Calibration Date	DAE4 Sn1715 2022-02-22	TSL Meas. Date	HBBL-600-10000 2022-Aug-03

Scans Setup

	Area Scan	Zoom Scan
Grid Extents [mm]	120.0 x 90.0	30.0 x 30.0 x 30.0
Grid Steps [mm]	15.0 x 15.0	6.0 x 6.0 x 1.5
Sensor Surface [mm]	3.0	1.4
Graded Grid	Yes	Yes
M2/M1 [%]		82.1
Dist 3dB Peak [mm]		11.1

Measurement Results

	Area Scan	Zoom Scan
psSAR1g [W/Kg]	0.133	0.140
psSAR10g [W/Kg]	0.074	0.077
Power Drift [dB]	-0.01	-0.00



Measurement Report for Band 2, UTRA/FDD, EDGE BOTTOM, Normal, Main Ant 2

Exposure Conditions

Band	Band 2, UTRA/FDD	TSL Permittivity	38.5
Frequency [MHz] Channel Number	1880.0 9400	TSL Conductivity [S/m]	1.43
Group UID	WCDMA 10011-CAB	Phantom Section TSL	Flat HSL
Conversion Factor	7.94	Test Distance [mm]	10.00
Communication Configuration	UMTS-FDD (WCDMA)		

Hardware Setup

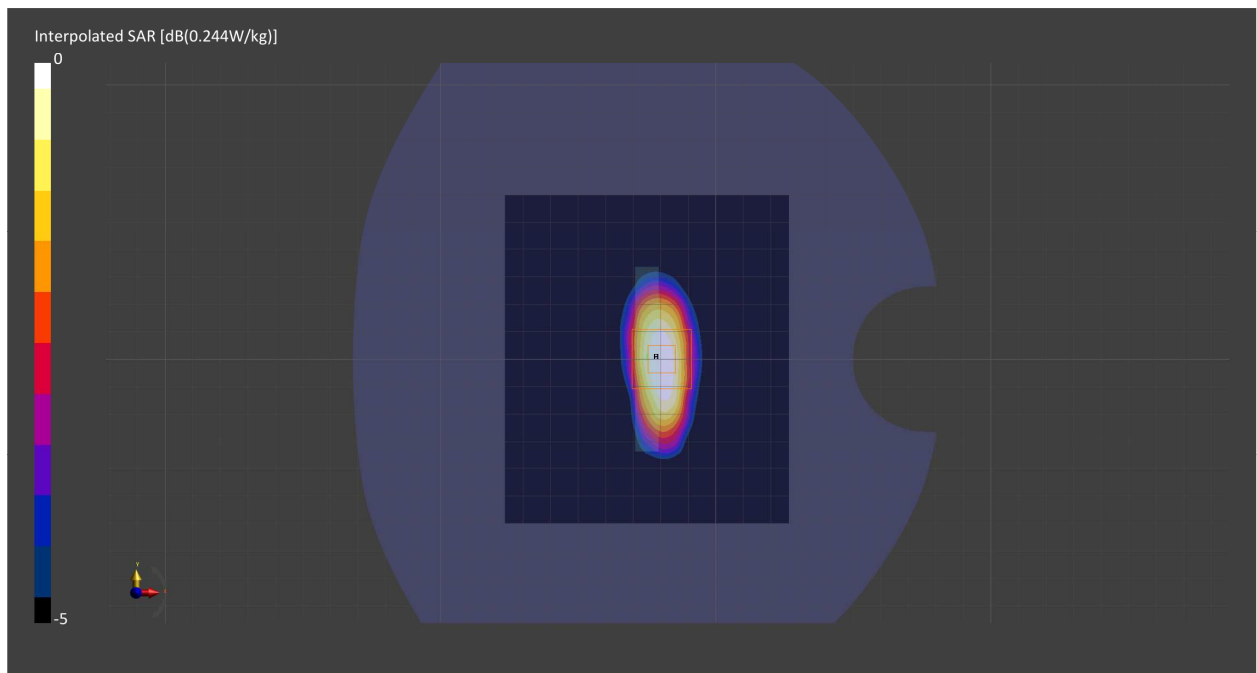
Probe Calibration Date	EX3DV4 - SN7549 2022-02-21	Phantom	Twin-SAM V8.0 (30deg probe tilt) - SN2084
DAE Calibration Date	DAE4 Sn1715 2022-02-22	TSL Meas. Date	HBBL-600-10000 2022-Aug-03

Scans Setup

	Area Scan	Zoom Scan
Grid Extents [mm]	103.2 x 120.0	30.0 x 30.0 x 30.0
Grid Steps [mm]	8.6 x 15.0	6.0 x 6.0 x 1.5
Sensor Surface [mm]	3.0	1.4
Graded Grid	Yes	Yes
M2/M1 [%]		82.0
Dist 3dB Peak [mm]		10.8

Measurement Results

	Area Scan	Zoom Scan
psSAR1g [W/Kg]	0.200	0.207
psSAR10g [W/Kg]	0.110	0.115
Power Drift [dB]	0.02	-0.00



Measurement Report for Band 4, UTRA/FDD, CHEEK, Normal, Main Ant 2

Exposure Conditions

Band	Band 4, UTRA/FDD	TSL Permittivity	41.4
Frequency [MHz] Channel Number	1732.6 1413	TSL Conductivity [S/m]	1.37
Group UID	WCDMA 10011-CAB	Phantom Section TSL	RightHead HSL
Conversion Factor	8.89	Test Distance [mm]	0.00
Communication Configuration	UMTS-FDD (WCDMA)		

Hardware Setup

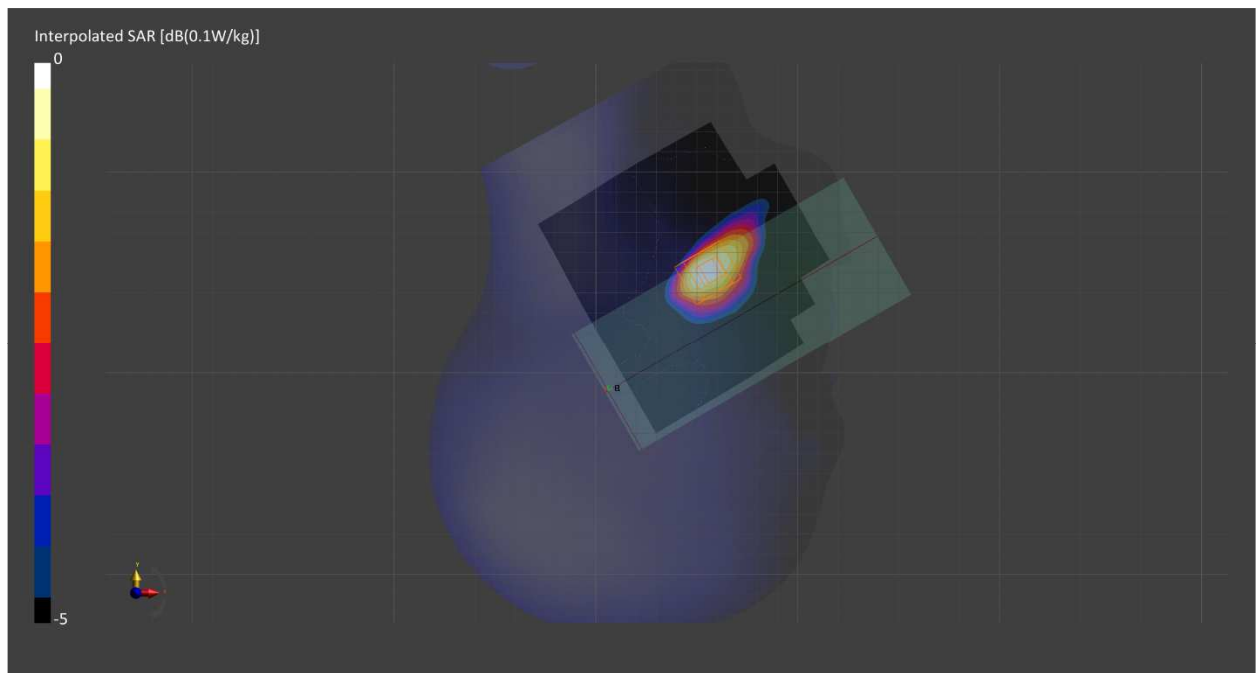
Probe Calibration Date	EX3DV4 - SN7711 2022-03-11	Phantom	Twin-SAM V5.0 (30deg probe tilt) - SN1742
DAE Calibration Date	DAE4 Sn1716 2022-03-08	TSL Meas. Date	HBBL-600-10000 2022-Aug-03

Scans Setup

	Area Scan	Zoom Scan
Grid Extents [mm]	120.0 x 120.0	30.0 x 30.0 x 30.0
Grid Steps [mm]	15.0 x 15.0	6.0 x 6.0 x 1.5
Sensor Surface [mm]	3.0	1.4
Graded Grid	Yes	Yes
M2/M1 [%]		89.9
Dist 3dB Peak [mm]		> 15.0

Measurement Results

	Area Scan	Zoom Scan
psSAR1g [W/Kg]	0.022	0.022
psSAR10g [W/Kg]	0.013	0.014
Power Drift [dB]	-0.30	-0.12



Measurement Report for Band 4, UTRA/FDD, FRONT, Normal, Main Ant 2

Exposure Conditions

Band	Band 4, UTRA/FDD	TSL Permittivity	41.4
Frequency [MHz] Channel Number	1732.6 1413	TSL Conductivity [S/m]	1.37
Group UID	WCDMA 10011-CAB	Phantom Section TSL	Flat HSL
Conversion Factor	8.89	Test Distance [mm]	10.00
Communication Configuration	UMTS-FDD (WCDMA)		

Hardware Setup

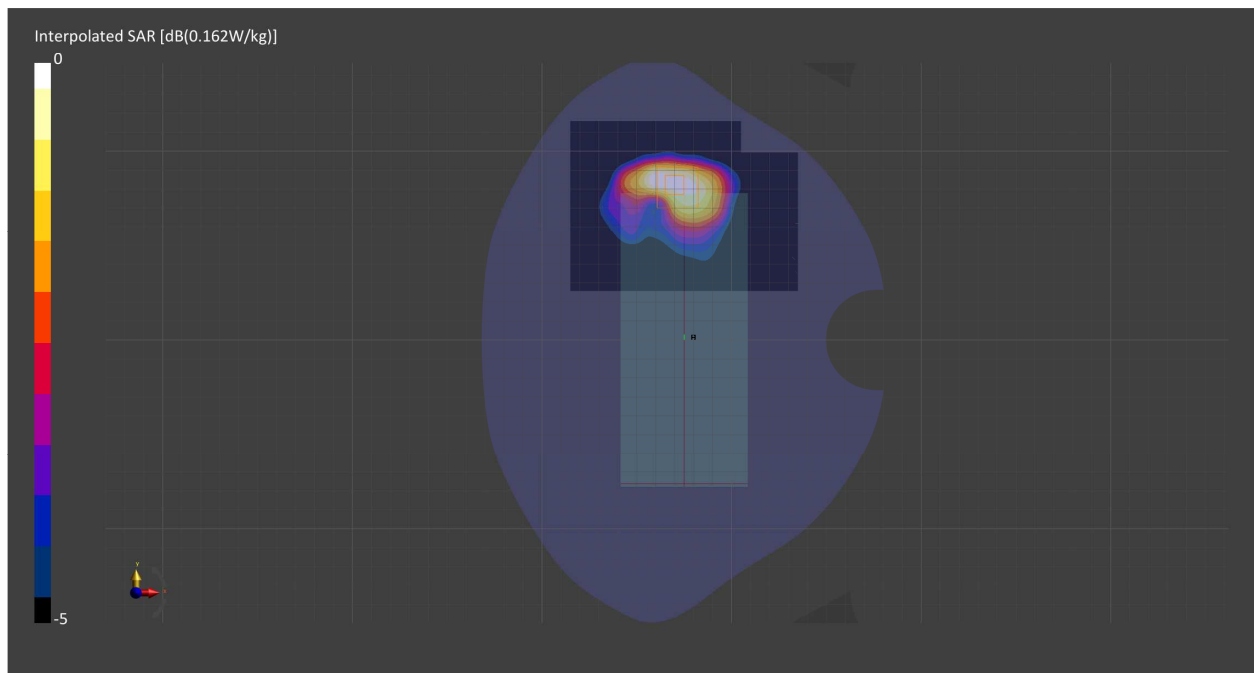
Probe Calibration Date	EX3DV4 - SN7711 2022-03-11	Phantom	Twin-SAM V5.0 (30deg probe tilt) - SN1742
DAE Calibration Date	DAE4 Sn1716 2022-03-08	TSL Meas. Date	HBBL-600-10000 2022-Aug-03

Scans Setup

	Area Scan	Zoom Scan
Grid Extents [mm]	120.0 x 90.0	30.0 x 30.0 x 30.0
Grid Steps [mm]	15.0 x 15.0	6.0 x 6.0 x 1.5
Sensor Surface [mm]	3.0	1.4
Graded Grid	Yes	Yes
M2/M1 [%]		84.8
Dist 3dB Peak [mm]		11.1

Measurement Results

	Area Scan	Zoom Scan
psSAR1g [W/Kg]	0.131	0.142
psSAR10g [W/Kg]	0.078	0.084
Power Drift [dB]	0.01	-0.01



Measurement Report for Band 4, UTRA/FDD, EDGE BOTTOM, Normal, Main Ant 2

Exposure Conditions

Band	Band 4, UTRA/FDD	TSL Permittivity	41.4
Frequency [MHz] Channel Number	1732.6 1413	TSL Conductivity [S/m]	1.37
Group UID	WCDMA 10011-CAB	Phantom Section TSL	Flat HSL
Conversion Factor	8.89	Test Distance [mm]	10.00
Communication Configuration	UMTS-FDD (WCDMA)		

Hardware Setup

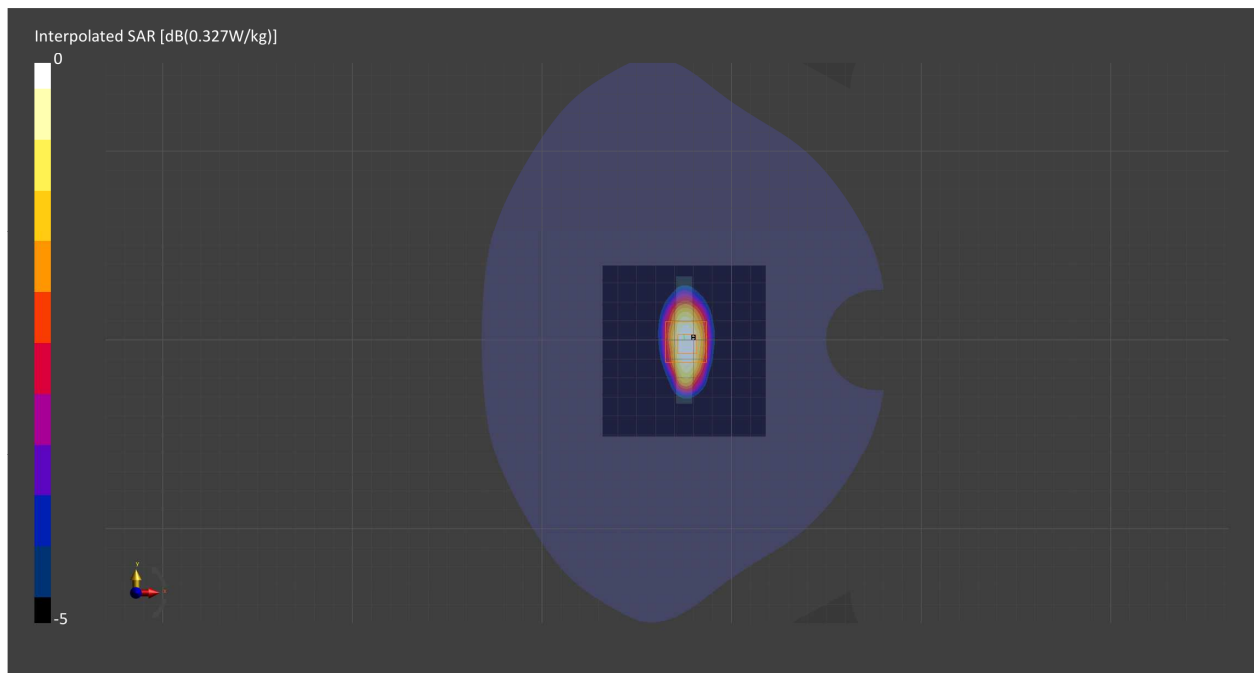
Probe Calibration Date	EX3DV4 - SN7711 2022-03-11	Phantom	Twin-SAM V5.0 (30deg probe tilt) - SN1742
DAE Calibration Date	DAE4 Sn1716 2022-03-08	TSL Meas. Date	HBBL-600-10000 2022-Aug-03

Scans Setup

	Area Scan	Zoom Scan
Grid Extents [mm]	86.0 x 90.0	30.0 x 30.0 x 30.0
Grid Steps [mm]	8.6 x 15.0	6.0 x 6.0 x 1.5
Sensor Surface [mm]	3.0	1.4
Graded Grid	Yes	Yes
M2/M1 [%]		82.8
Dist 3dB Peak [mm]		11.1

Measurement Results

	Area Scan	Zoom Scan
psSAR1g [W/Kg]	0.265	0.268
psSAR10g [W/Kg]	0.147	0.152
Power Drift [dB]	-0.17	0.01



Measurement Report for Band 5, UTRA/FDD, CHEEK, Normal, Main Ant 1

Exposure Conditions

Band	Band 5, UTRA/FDD	TSL Permittivity	40.0
Frequency [MHz] Channel Number	836.6 4183	TSL Conductivity [S/m]	0.947
Group UID	WCDMA 10011-CAB	Phantom Section TSL	LeftHead HSL
Conversion Factor	9.43	Test Distance [mm]	0.00
Communication Configuration	UMTS-FDD (WCDMA)		

Hardware Setup

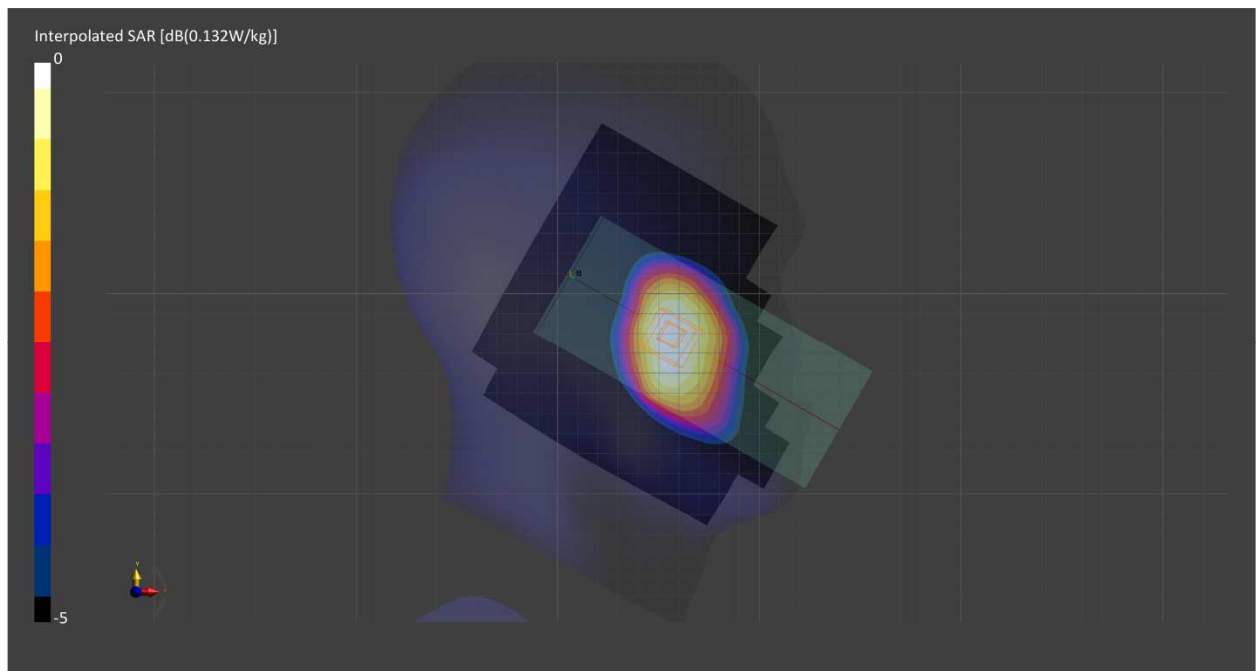
Probe Calibration Date	EX3DV4 - SN7549 2022-02-21	Phantom	Twin-SAM V8.0 (30deg probe tilt) - SN2084
DAE Calibration Date	DAE4 Sn1715 2022-02-22	TSL Meas. Date	HBBL-600-10000 2022-Aug-04

Scans Setup

	Area Scan	Zoom Scan
Grid Extents [mm]	150.0 x 180.0	30.0 x 30.0 x 30.0
Grid Steps [mm]	15.0 x 15.0	6.0 x 6.0 x 1.5
Sensor Surface [mm]	3.0	1.4
Graded Grid	Yes	Yes
M2/M1 [%]		91.8
Dist 3dB Peak [mm]		21.1

Measurement Results

	Area Scan	Zoom Scan
psSAR1g [W/Kg]	0.115	0.121
psSAR10g [W/Kg]	0.080	0.091
Power Drift [dB]	-0.03	0.04



Measurement Report for Band 5, UTRA/FDD, BACK, Normal, Main Ant 1

Exposure Conditions

Band	Band 5, UTRA/FDD	TSL Permittivity	40.0
Frequency [MHz] Channel Number	836.6 4183	TSL Conductivity [S/m]	0.947
Group UID	WCDMA 10011-CAB	Phantom Section TSL	Flat HSL
Conversion Factor	9.43	Test Distance [mm]	10.00
Communication Configuration	UMTS-FDD (WCDMA)		

Hardware Setup

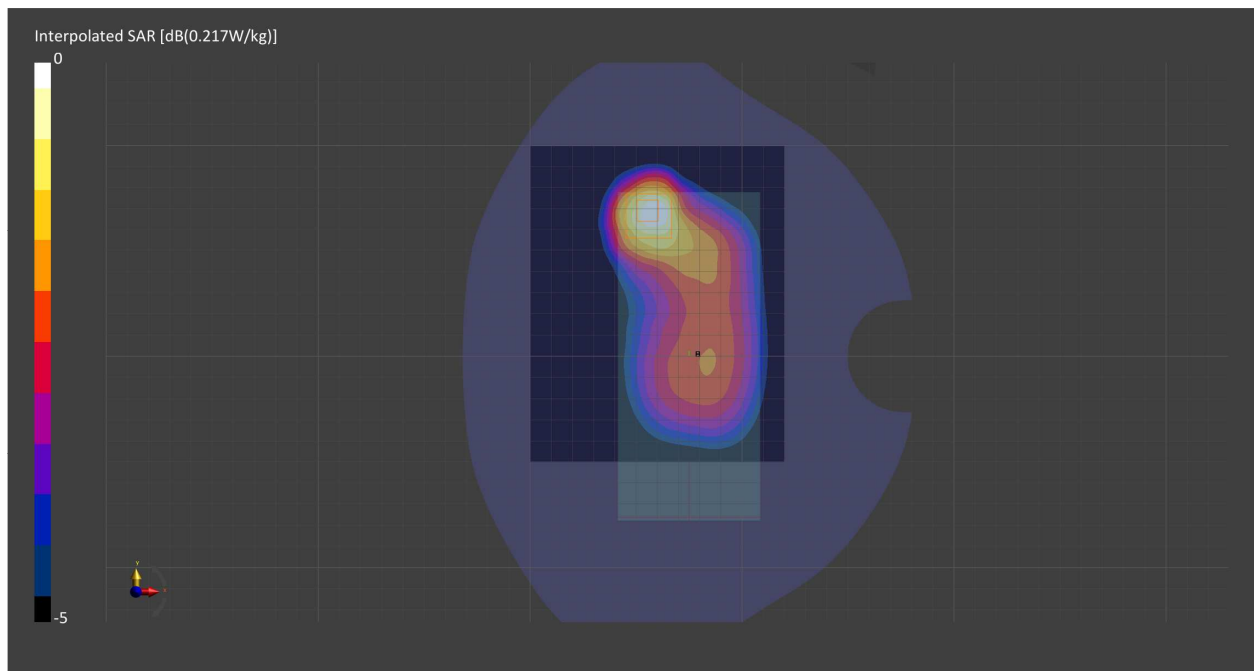
Probe Calibration Date	EX3DV4 - SN7549 2022-02-21	Phantom	Twin-SAM V8.0 (30deg probe tilt) - SN2084
DAE Calibration Date	DAE4 Sn1715 2022-02-22	TSL Meas. Date	HBBL-600-10000 2022-Aug-04

Scans Setup

	Area Scan	Zoom Scan
Grid Extents [mm]	120.0 x 150.0	30.0 x 30.0 x 30.0
Grid Steps [mm]	15.0 x 15.0	6.0 x 6.0 x 1.5
Sensor Surface [mm]	3.0	1.4
Graded Grid	Yes	Yes
M2/M1 [%]		81.5
Dist 3dB Peak [mm]		14.5

Measurement Results

	Area Scan	Zoom Scan
psSAR1g [W/Kg]	0.185	0.189
psSAR10g [W/Kg]	0.120	0.109
Power Drift [dB]	-0.00	0.01



Measurement Report for Band 4, E-UTRA/FDD, CHEEK, Normal, Main Ant 2

Exposure Conditions

Band	Band 4, E-UTRA/FDD	TSL Permittivity	41.4
Frequency [MHz] Channel Number	1732.5 20175	TSL Conductivity [S/m]	1.37
Group UID	LTE-FDD 10297-AAD	Phantom Section TSL	RightHead HSL
Conversion Factor	8.89	Test Distance [mm]	0.00
Communication Configuration	LTE-FDD (SC-FDMA, 50% RB, 20 MHz, QPSK) RBPosition:Mid AntennaCfg:SISO		

Hardware Setup

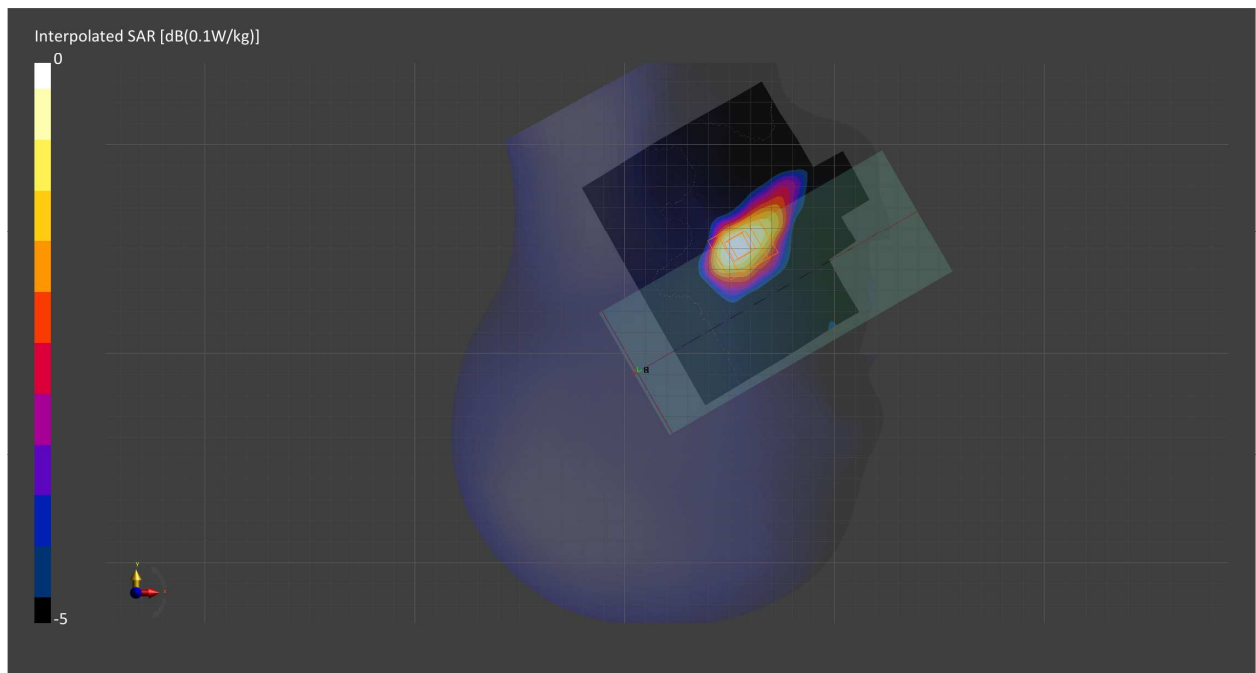
Probe Calibration Date	EX3DV4 - SN7711 2022-03-11	Phantom	Twin-SAM V5.0 (30deg probe tilt) - SN1742
DAE Calibration Date	DAE4 Sn1716 2022-03-08	TSL Meas. Date	HBBL-600-10000 2022-Aug-03

Scans Setup

	Area Scan	Zoom Scan
Grid Extents [mm]	120.0 x 120.0	50.0 x 50.0 x 30.0
Grid Steps [mm]	15.0 x 15.0	6.0 x 6.0 x 1.5
Sensor Surface [mm]	3.0	1.4
Graded Grid	Yes	Yes
M2/M1 [%]		89.4
Dist 3dB Peak [mm]		> 25.0

Measurement Results

	Area Scan	Zoom Scan
psSAR1g [W/Kg]	0.020	0.020
psSAR10g [W/Kg]	0.012	0.012
Power Drift [dB]	-0.22	-0.06



Measurement Report for Band 4, E-UTRA/FDD, FRONT, Normal, Main Ant 2

Exposure Conditions

Band	Band 4, E-UTRA/FDD	TSL Permittivity	41.4
Frequency [MHz] Channel Number	1732.5 20175	TSL Conductivity [S/m]	1.37
Group UID	LTE-FDD 10297-AAD	Phantom Section TSL	Flat HSL
Conversion Factor	8.89	Test Distance [mm]	10.00
Communication Configuration	LTE-FDD (SC-FDMA, 50% RB, 20 MHz, QPSK) RBPosition:Mid AntennaCfg:SISO		

Hardware Setup

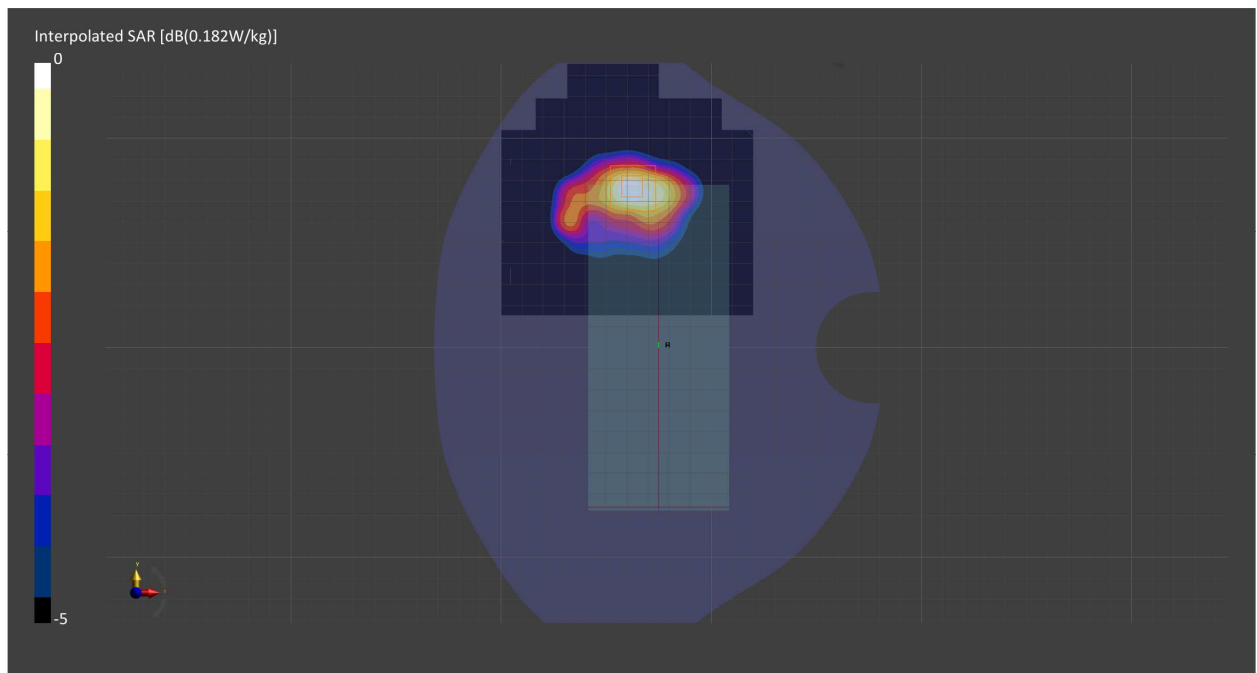
Probe Calibration Date	EX3DV4 - SN7711 2022-03-11	Phantom	Twin-SAM V5.0 (30deg probe tilt) - SN1742
DAE Calibration Date	DAE4 Sn1716 2022-03-08	TSL Meas. Date	HBBL-600-10000 2022-Aug-03

Scans Setup

	Area Scan	Zoom Scan
Grid Extents [mm]	120.0 x 120.0	30.0 x 30.0 x 30.0
Grid Steps [mm]	15.0 x 15.0	6.0 x 6.0 x 1.5
Sensor Surface [mm]	3.0	1.4
Graded Grid	Yes	Yes
M2/M1 [%]		83.1
Dist 3dB Peak [mm]		10.2

Measurement Results

	Area Scan	Zoom Scan
psSAR1g [W/Kg]	0.148	0.152
psSAR10g [W/Kg]	0.086	0.087
Power Drift [dB]	0.01	0.00



Measurement Report for Band 4, E-UTRA/FDD, EDGE BOTTOM, Normal, Main Ant 2

Exposure Conditions

Band	Band 4, E-UTRA/FDD	TSL Permittivity	38.5
Frequency [MHz] Channel Number	1732.5 20175	TSL Conductivity [S/m]	1.38
Group UID	LTE-FDD 10297-AAD	Phantom Section TSL	Flat HSL
Conversion Factor	8.89	Test Distance [mm]	10.00
Communication Configuration	LTE-FDD (SC-FDMA, 50% RB, 20 MHz, QPSK) RBPosition:Mid AntennaCfg:SISO		

Hardware Setup

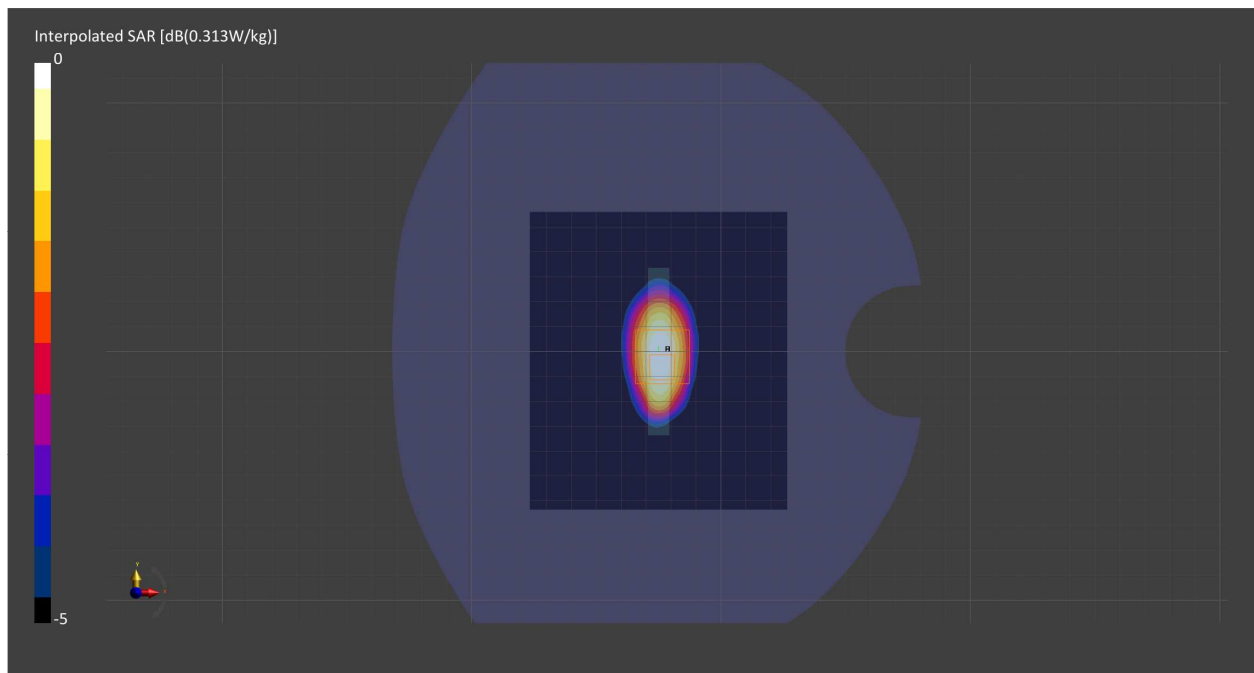
Probe Calibration Date	EX3DV4 - SN7711 2022-03-11	Phantom	Twin-SAM V5.0 (30deg probe tilt) - SN1742
DAE Calibration Date	DAE4 Sn1716 2022-03-08	TSL Meas. Date	HBBL-600-10000 2022-Aug-01

Scans Setup

	Area Scan	Zoom Scan
Grid Extents [mm]	103.2 x 120.0	30.0 x 30.0 x 30.0
Grid Steps [mm]	8.6 x 15.0	6.0 x 6.0 x 1.5
Sensor Surface [mm]	3.0	1.4
Graded Grid	Yes	Yes
M2/M1 [%]		82.3
Dist 3dB Peak [mm]		7.2

Measurement Results

	Area Scan	Zoom Scan
psSAR1g [W/Kg]	0.256	0.255
psSAR10g [W/Kg]	0.144	0.143
Power Drift [dB]	0.02	0.01



Measurement Report for Band 5, E-UTRA/FDD, CHEEK, Normal, Main Ant 1

Exposure Conditions

Band	Band 5, E-UTRA/FDD	TSL Permittivity	43.1
Frequency [MHz] Channel Number	836.5 20525	TSL Conductivity [S/m]	0.947
Group UID	LTE-FDD 10154-CAG	Phantom Section TSL	RightHead HSL
Conversion Factor	9.82	Test Distance [mm]	0.00
Communication Configuration	LTE-FDD (SC-FDMA, 50% RB, 10 MHz, QPSK) RBPosition:Low AntennaCfg:SISO		

Hardware Setup

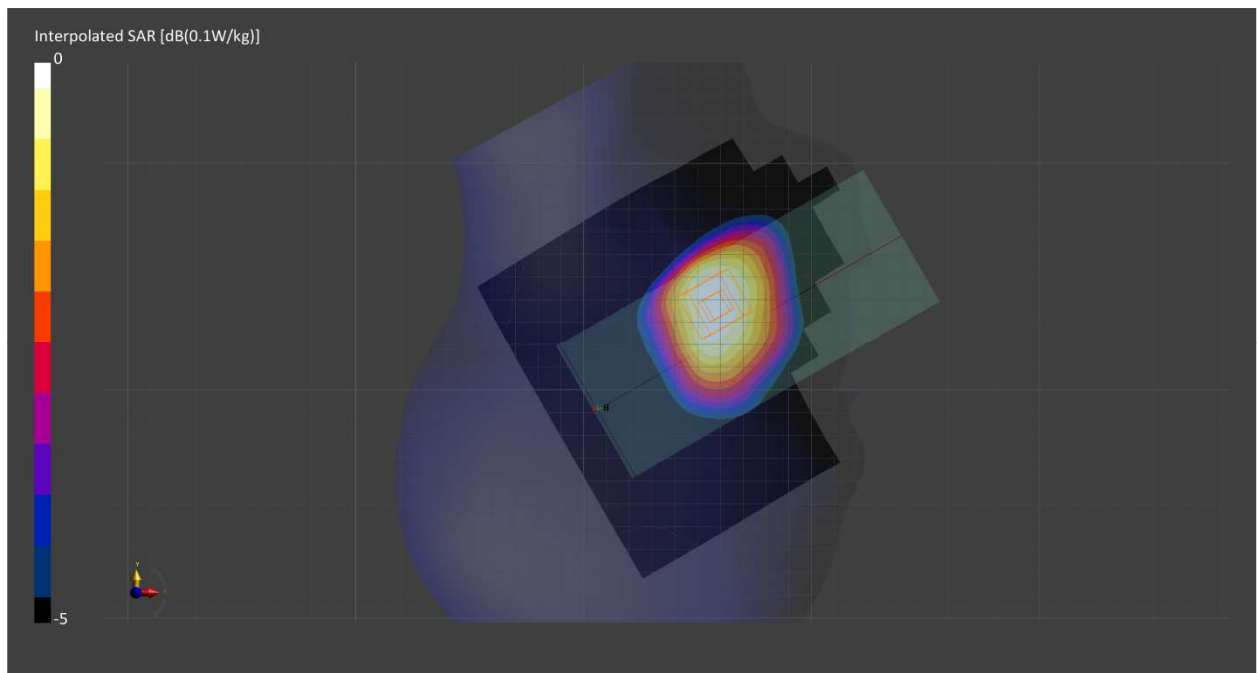
Probe Calibration Date	EX3DV4 - SN7711 2022-03-11	Phantom	Twin-SAM V5.0 (30deg probe tilt) - SN1742
DAE Calibration Date	DAE4 Sn1716 2022-03-08	TSL Meas. Date	HBBL-600-10000 2022-Aug-03

Scans Setup

	Area Scan	Zoom Scan
Grid Extents [mm]	150.0 x 180.0	30.0 x 30.0 x 30.0
Grid Steps [mm]	15.0 x 15.0	6.0 x 6.0 x 1.5
Sensor Surface [mm]	3.0	1.4
Graded Grid	Yes	Yes
M2/M1 [%]		94.3
Dist 3dB Peak [mm]		> 15.0

Measurement Results

	Area Scan	Zoom Scan
psSAR1g [W/Kg]	0.077	0.080
psSAR10g [W/Kg]	0.053	0.060
Power Drift [dB]	0.09	-0.01



Measurement Report for Band 5, E-UTRA/FDD, BACK, Normal, Main Ant 1

Exposure Conditions

Band	Band 5, E-UTRA/FDD	TSL Permittivity	43.1
Frequency [MHz] Channel Number	836.5 20525	TSL Conductivity [S/m]	0.947
Group UID	LTE-FDD 10154-CAG	Phantom Section TSL	Flat HSL
Conversion Factor	9.82	Test Distance [mm]	10.00
Communication Configuration	LTE-FDD (SC-FDMA, 50% RB, 10 MHz, QPSK) RBPosition:Low AntennaCfg:SISO		

Hardware Setup

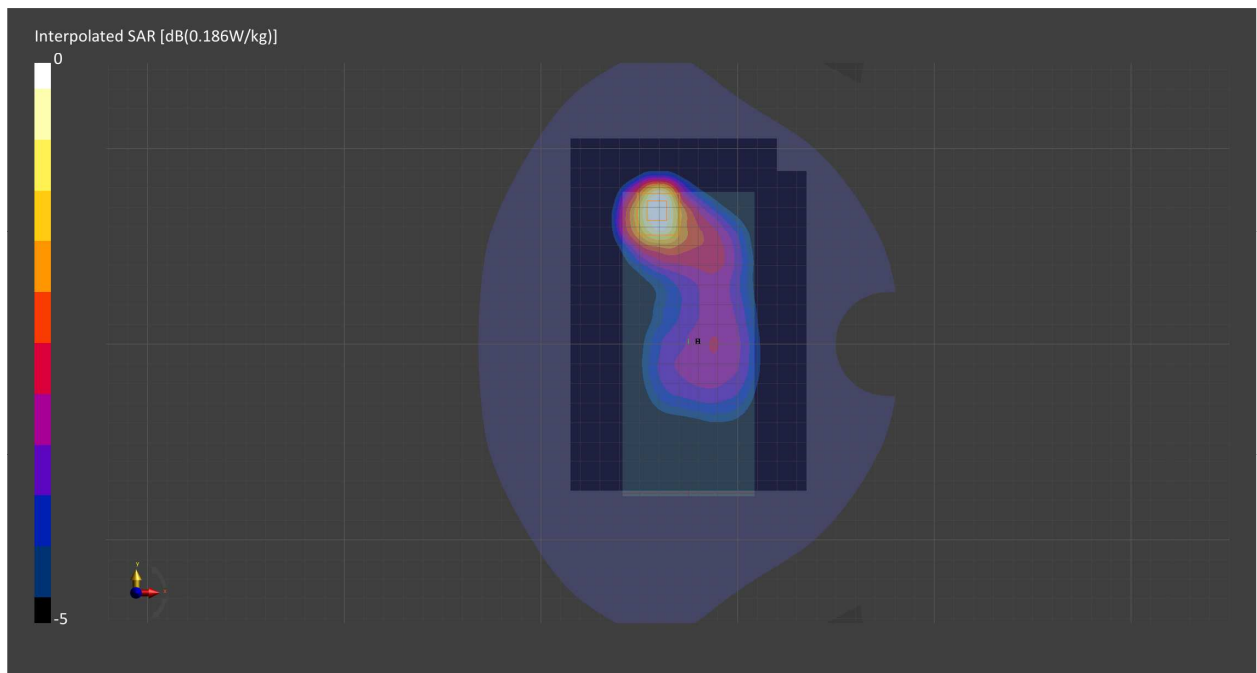
Probe Calibration Date	EX3DV4 - SN7711 2022-03-11	Phantom	Twin-SAM V5.0 (30deg probe tilt) - SN1742
DAE Calibration Date	DAE4 Sn1716 2022-03-08	TSL Meas. Date	HBBL-600-10000 2022-Aug-03

Scans Setup

	Area Scan	Zoom Scan
Grid Extents [mm]	120.0 x 180.0	30.0 x 30.0 x 30.0
Grid Steps [mm]	15.0 x 15.0	6.0 x 6.0 x 1.5
Sensor Surface [mm]	3.0	1.4
Graded Grid	Yes	Yes
M2/M1 [%]		82.8
Dist 3dB Peak [mm]		13.4

Measurement Results

	Area Scan	Zoom Scan
psSAR1g [W/Kg]	0.160	0.158
psSAR10g [W/Kg]	0.102	0.089
Power Drift [dB]	-0.01	-0.01



Measurement Report for Band 12, E-UTRA/FDD, CHEEK, Normal, Main Ant 1

Exposure Conditions

Band	Band 12, E-UTRA/FDD	TSL Permittivity	43.2
Frequency [MHz] Channel Number	707.5 23095	TSL Conductivity [S/m]	0.903
Group UID	LTE-FDD 10175-CAG	Phantom Section TSL	LeftHead HSL
Conversion Factor	10.25	Test Distance [mm]	0.00
Communication Configuration	LTE-FDD (SC-FDMA, 1 RB, 10 MHz, QPSK) RBPosition:Mid AntennaCfg:SISO		

Hardware Setup

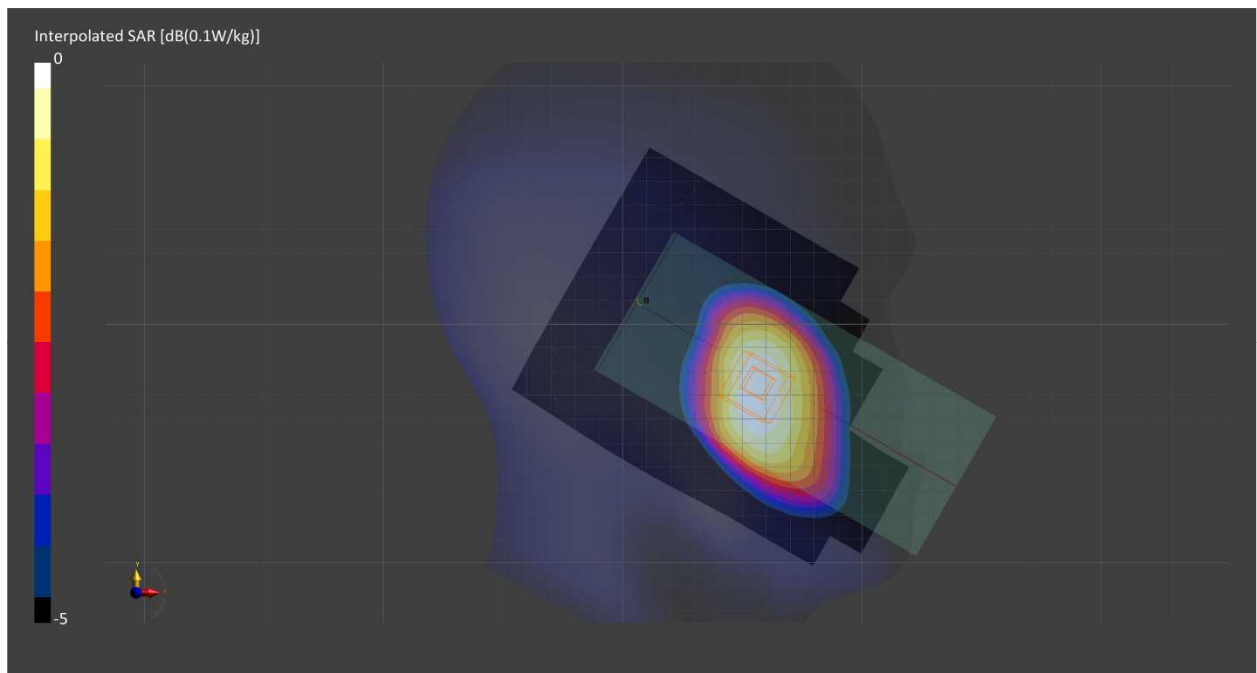
Probe Calibration Date	EX3DV4 - SN7709 2022-02-25	Phantom	Twin-SAM V8.0 (30deg probe tilt) - SN2082
DAE Calibration Date	DAE4 Sn1714 2022-02-23	TSL Meas. Date	HBBL-600-10000 2022-Aug-02

Scans Setup

	Area Scan	Zoom Scan
Grid Extents [mm]	120.0 x 210.0	30.0 x 30.0 x 30.0
Grid Steps [mm]	15.0 x 15.0	6.0 x 6.0 x 1.5
Sensor Surface [mm]	3.0	1.4
Graded Grid	Yes	Yes
M2/M1 [%]		92.1
Dist 3dB Peak [mm]		> 15.0

Measurement Results

	Area Scan	Zoom Scan
psSAR1g [W/Kg]	0.061	0.064
psSAR10g [W/Kg]	0.043	0.050
Power Drift [dB]	-0.03	0.03



Measurement Report for Band 12, E-UTRA/FDD, BACK, Normal, Main Ant 1

Exposure Conditions

Band	Band 12, E-UTRA/FDD	TSL Permittivity	43.2
Frequency [MHz] Channel Number	707.5 23095	TSL Conductivity [S/m]	0.903
Group UID	LTE-FDD 10175-CAG	Phantom Section TSL	Flat HSL
Conversion Factor	10.25	Test Distance [mm]	10.00
Communication Configuration	LTE-FDD (SC-FDMA, 1 RB, 10 MHz, QPSK) RBPosition:Mid AntennaCfg:SISO		

Hardware Setup

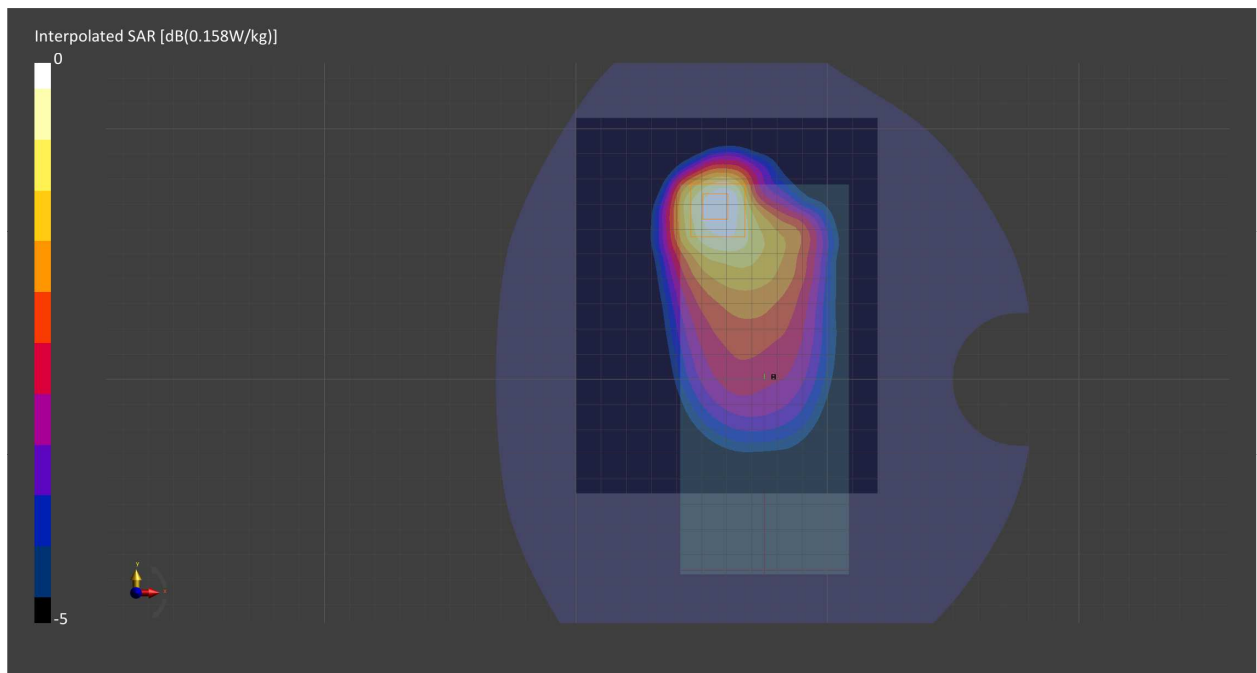
Probe Calibration Date	EX3DV4 - SN7709 2022-02-25	Phantom	Twin-SAM V8.0 (30deg probe tilt) - SN2082
DAE Calibration Date	DAE4 Sn1714 2022-02-23	TSL Meas. Date	HBBL-600-10000 2022-Aug-02

Scans Setup

	Area Scan	Zoom Scan
Grid Extents [mm]	120.0 x 150.0	30.0 x 30.0 x 30.0
Grid Steps [mm]	15.0 x 15.0	6.0 x 6.0 x 1.5
Sensor Surface [mm]	3.0	1.4
Graded Grid	Yes	Yes
M2/M1 [%]		83.6
Dist 3dB Peak [mm]		16.1

Measurement Results

	Area Scan	Zoom Scan
psSAR1g [W/Kg]	0.139	0.138
psSAR10g [W/Kg]	0.094	0.083
Power Drift [dB]	0.01	-0.01



Measurement Report for Band 13, E-UTRA/FDD, CHEEK, Normal, Main Ant 1

Exposure Conditions

Band	Band 13, E-UTRA/FDD	TSL Permittivity	43.0
Frequency [MHz] Channel Number	782.0 23230	TSL Conductivity [S/m]	0.931
Group UID	LTE-FDD 10154-CAG	Phantom Section TSL	LeftHead HSL
Conversion Factor	10.25	Test Distance [mm]	0.00
Communication Configuration	LTE-FDD (SC-FDMA, 50% RB, 10 MHz, QPSK) RBPosition:Low AntennaCfg:SISO		

Hardware Setup

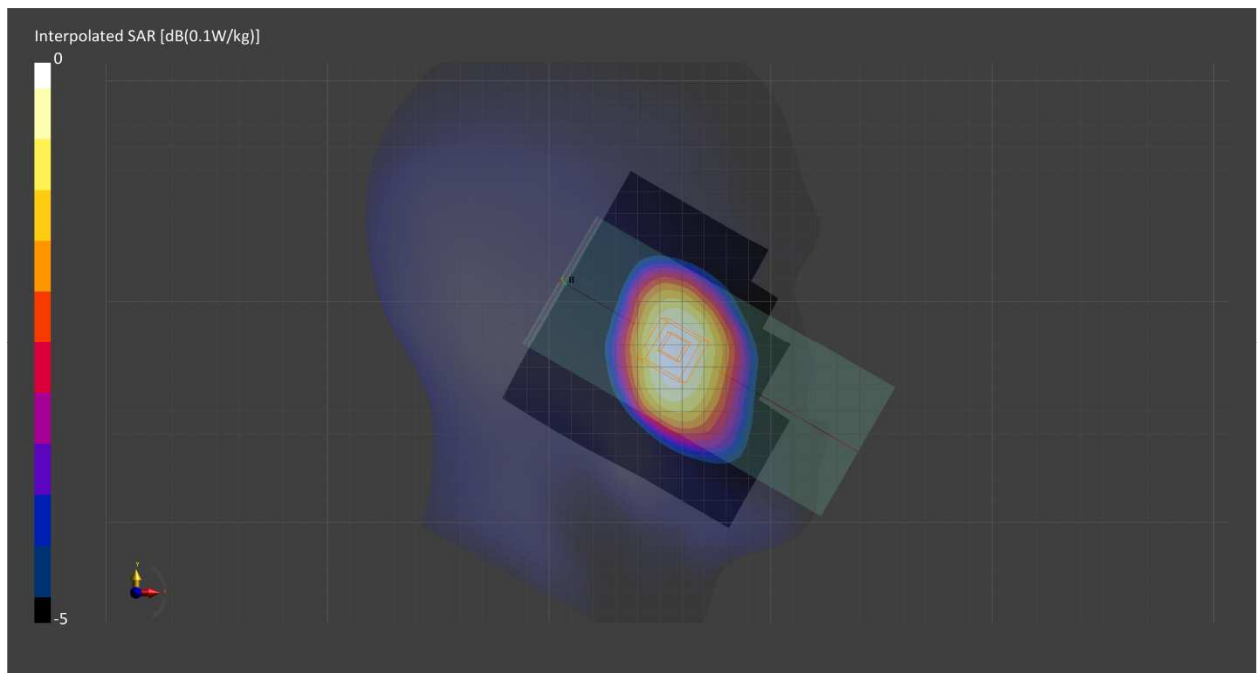
Probe Calibration Date	EX3DV4 - SN7709 2022-02-25	Phantom	Twin-SAM V8.0 (30deg probe tilt) - SN2082
DAE Calibration Date	DAE4 Sn1714 2022-02-23	TSL Meas. Date	HBBL-600-10000 2022-Aug-02

Scans Setup

	Area Scan	Zoom Scan
Grid Extents [mm]	120.0 x 120.0	30.0 x 30.0 x 30.0
Grid Steps [mm]	15.0 x 15.0	6.0 x 6.0 x 1.5
Sensor Surface [mm]	3.0	1.4
Graded Grid	Yes	Yes
M2/M1 [%]		94.0
Dist 3dB Peak [mm]		> 15.0

Measurement Results

	Area Scan	Zoom Scan
psSAR1g [W/Kg]	0.077	0.082
psSAR10g [W/Kg]	0.054	0.063
Power Drift [dB]	0.03	-0.02



Measurement Report for Band 13, E-UTRA/FDD, BACK, Normal, Main Ant 1

Exposure Conditions

Band	Band 13, E-UTRA/FDD	TSL Permittivity	43.0
Frequency [MHz] Channel Number	782.0 23230	TSL Conductivity [S/m]	0.931
Group UID	LTE-FDD 10154-CAG	Phantom Section TSL	Flat HSL
Conversion Factor	10.25	Test Distance [mm]	10.00
Communication Configuration	LTE-FDD (SC-FDMA, 50% RB, 10 MHz, QPSK) RBPosition:Low AntennaCfg:SISO		

Hardware Setup

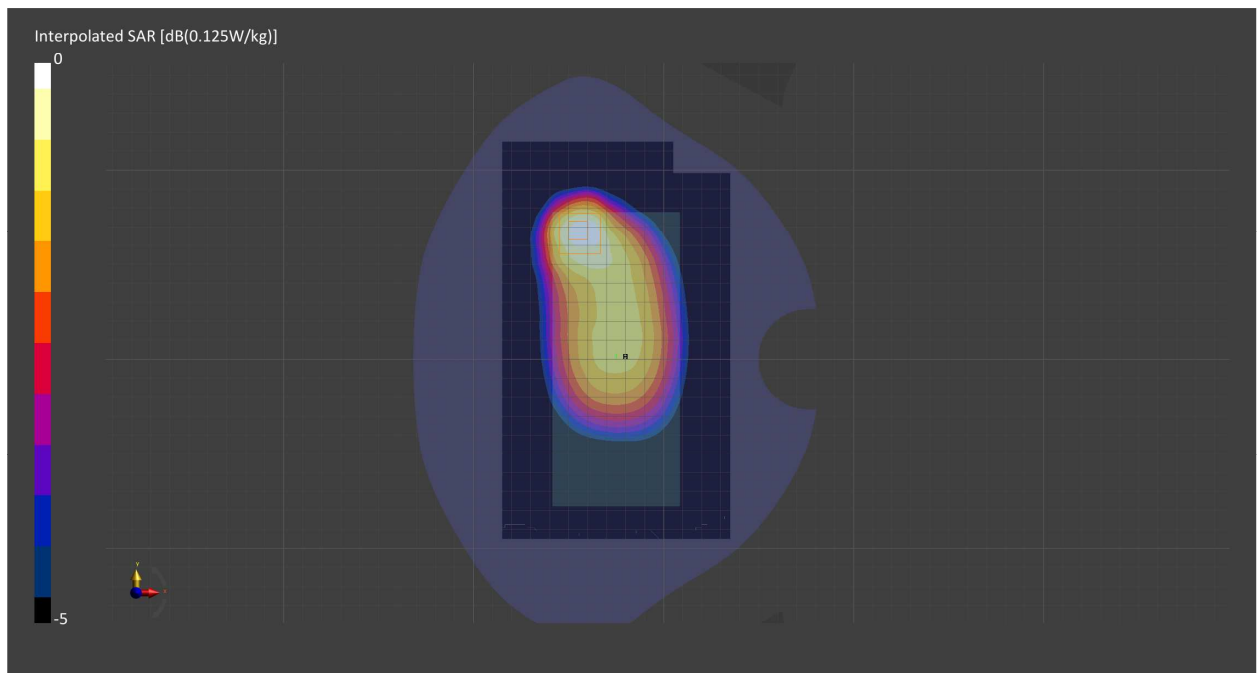
Probe Calibration Date	EX3DV4 - SN7709 2022-02-25	Phantom	Twin-SAM V8.0 (30deg probe tilt) - SN2082
DAE Calibration Date	DAE4 Sn1714 2022-02-23	TSL Meas. Date	HBBL-600-10000 2022-Aug-02

Scans Setup

	Area Scan	Zoom Scan
Grid Extents [mm]	120.0 x 210.0	30.0 x 30.0 x 30.0
Grid Steps [mm]	15.0 x 15.0	6.0 x 6.0 x 1.5
Sensor Surface [mm]	3.0	1.4
Graded Grid	Yes	Yes
M2/M1 [%]		81.2
Dist 3dB Peak [mm]		15.3

Measurement Results

	Area Scan	Zoom Scan
psSAR1g [W/Kg]	0.108	0.108
psSAR10g [W/Kg]	0.073	0.064
Power Drift [dB]	-0.01	0.00



Measurement Report for Band 41, E-UTRA/TDD, CHEEK, Normal, Main Ant 2

Exposure Conditions

Band	Band 41, E-UTRA/TDD	TSL Permittivity	40.4
Frequency [MHz] Channel Number	2506.0 39750	TSL Conductivity [S/m]	1.89
Group UID	LTE-TDD 10435-AAF	Phantom Section TSL	RightHead HSL
Conversion Factor	8.01	Test Distance [mm]	0.00
Communication Configuration	LTE-TDD (SC-FDMA, 1 RB, 20 MHz, QPSK, UL Subframe=2,3,4,7,8,9) RBPosition:Low AntennaCfg:SISO		

Hardware Setup

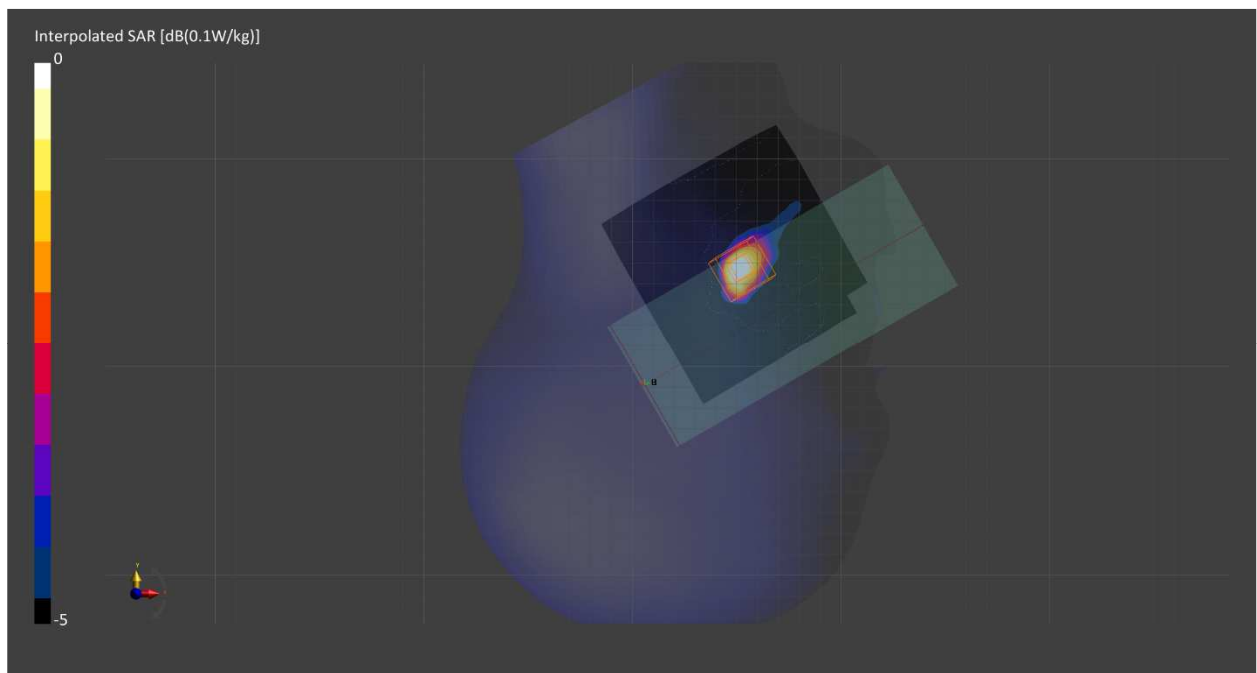
Probe Calibration Date	EX3DV4 - SN7711 2022-03-11	Phantom	Twin-SAM V5.0 (30deg probe tilt) - SN1742
DAE Calibration Date	DAE4 Sn1716 2022-03-08	TSL Meas. Date	HBBL-600-10000 2022-Aug-03

Scans Setup

	Area Scan	Zoom Scan
Grid Extents [mm]	100.0 x 100.0	50.0 x 50.0 x 30.0
Grid Steps [mm]	10.0 x 10.0	5.0 x 5.0 x 1.5
Sensor Surface [mm]	3.0	1.4
Graded Grid	Yes	Yes
M2/M1 [%]		92.6
Dist 3dB Peak [mm]		> 25.0

Measurement Results

	Area Scan	Zoom Scan
psSAR1g [W/Kg]	0.013	0.014
psSAR10g [W/Kg]	0.006	0.006
Power Drift [dB]	-0.70	0.23



Measurement Report for Band 41, E-UTRA/TDD, BACK, Normal, Main Ant 2

Exposure Conditions

Band	Band 41, E-UTRA/TDD	TSL Permittivity	40.4
Frequency [MHz] Channel Number	2506.0 39750	TSL Conductivity [S/m]	1.89
Group UID	LTE-TDD 10494-AAF	Phantom Section TSL	Flat HSL
Conversion Factor	8.01	Test Distance [mm]	10.00
Communication Configuration	LTE-TDD (SC-FDMA, 50% RB, 20 MHz, QPSK, UL Subframe=2,3,4,7,8,9) RBPosition:Low AntennaCfg:SISO		

Hardware Setup

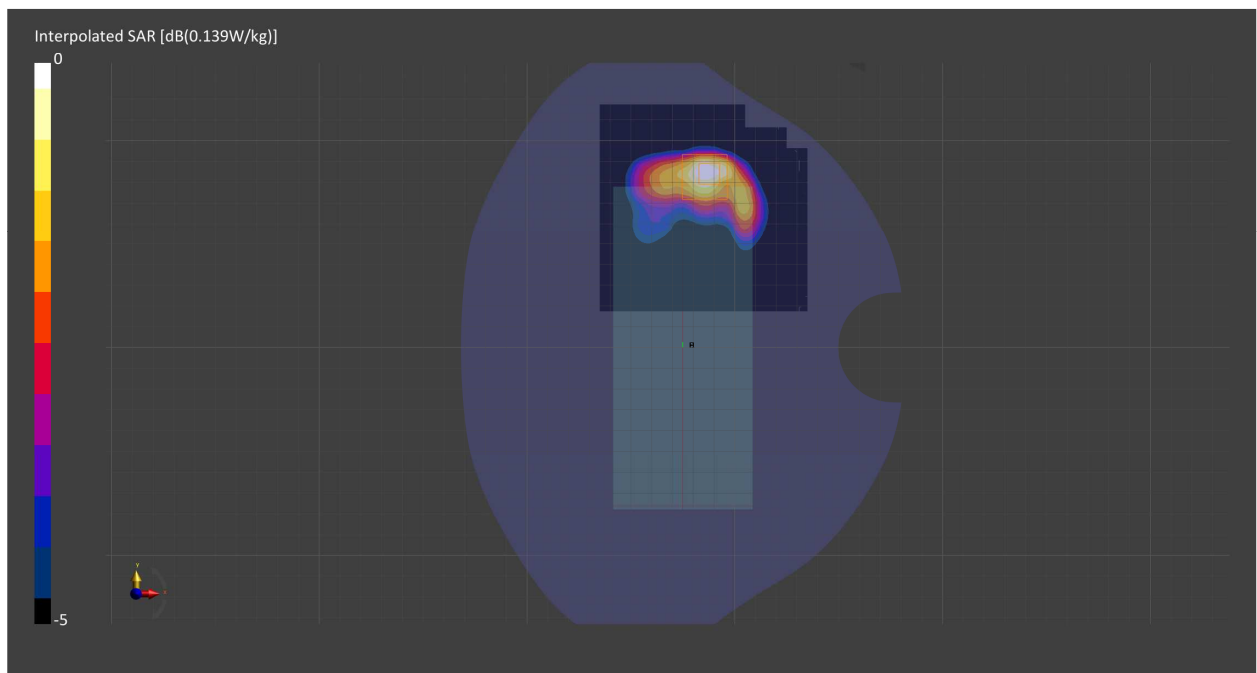
Probe Calibration Date	EX3DV4 - SN7711 2022-03-11	Phantom	Twin-SAM V5.0 (30deg probe tilt) - SN1742
DAE Calibration Date	DAE4 Sn1716 2022-03-08	TSL Meas. Date	HBBL-600-10000 2022-Aug-03

Scans Setup

	Area Scan	Zoom Scan
Grid Extents [mm]	100.0 x 100.0	30.0 x 30.0 x 30.0
Grid Steps [mm]	10.0 x 10.0	5.0 x 5.0 x 1.5
Sensor Surface [mm]	3.0	1.4
Graded Grid	Yes	Yes
M2/M1 [%]		79.9
Dist 3dB Peak [mm]		10.0

Measurement Results

	Area Scan	Zoom Scan
psSAR1g [W/Kg]	0.108	0.108
psSAR10g [W/Kg]	0.055	0.053
Power Drift [dB]	0.01	0.01



Measurement Report for Band 41, E-UTRA/TDD, EDGE BOTTOM, Normal, Main Ant 2

Exposure Conditions

Band	Band 41, E-UTRA/TDD	TSL Permittivity	40.4
Frequency [MHz] Channel Number	2506.0 39750	TSL Conductivity [S/m]	1.89
Group UID	LTE-TDD 10494-AAF	Phantom Section TSL	Flat HSL
Conversion Factor	8.01	Test Distance [mm]	10.00
Communication Configuration	LTE-TDD (SC-FDMA, 50% RB, 20 MHz, QPSK, UL Subframe=2,3,4,7,8,9) RBPosition:Low AntennaCfg:SISO		

Hardware Setup

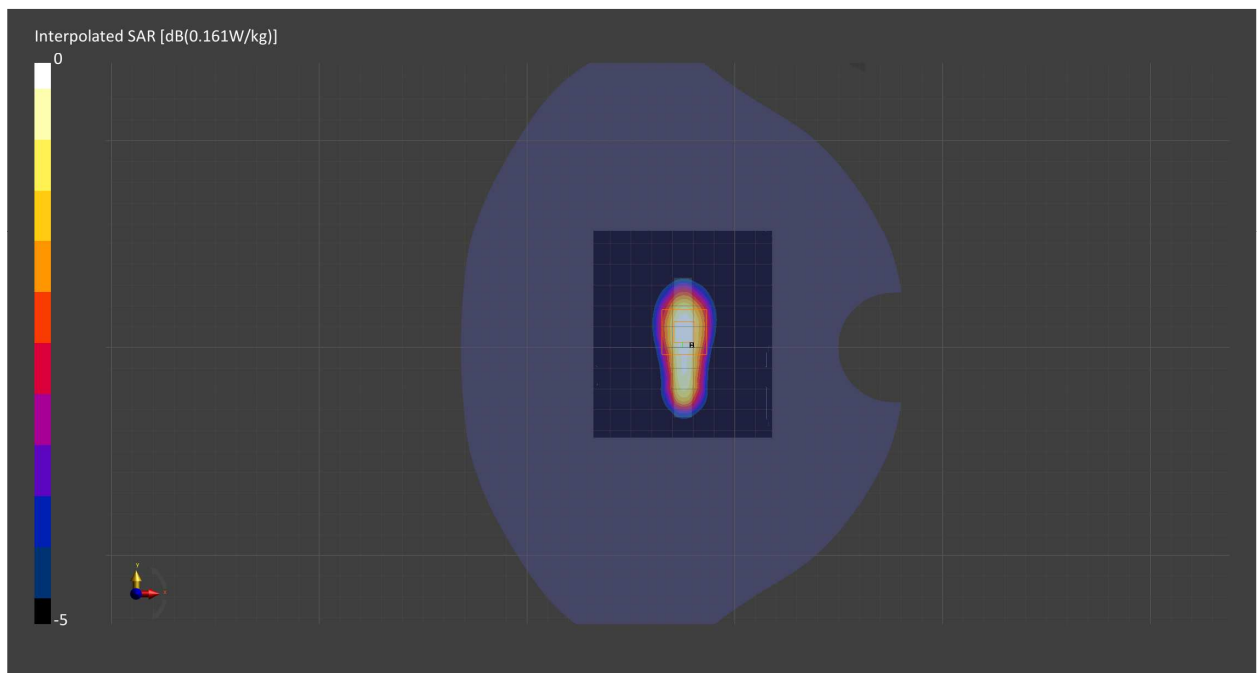
Probe Calibration Date	EX3DV4 - SN7711 2022-03-11	Phantom	Twin-SAM V5.0 (30deg probe tilt) - SN1742
DAE Calibration Date	DAE4 Sn1716 2022-03-08	TSL Meas. Date	HBBL-600-10000 2022-Aug-03

Scans Setup

	Area Scan	Zoom Scan
Grid Extents [mm]	86.0 x 100.0	30.0 x 30.0 x 30.0
Grid Steps [mm]	8.6 x 10.0	5.0 x 5.0 x 1.5
Sensor Surface [mm]	3.0	1.4
Graded Grid	Yes	Yes
M2/M1 [%]		78.8
Dist 3dB Peak [mm]		11.7

Measurement Results

	Area Scan	Zoom Scan
psSAR1g [W/Kg]	0.126	0.131
psSAR10g [W/Kg]	0.064	0.068
Power Drift [dB]	-0.02	0.03



Measurement Report for WLAN 2.4GHz, CHEEK, Normal, Wi-Fi Main Ant

Exposure Conditions

Band	WLAN 2.4GHz	TSL Permittivity	37.9
Frequency [MHz] Channel Number	2437.0 6	TSL Conductivity [S/m]	1.81
Group UID	WLAN 10415-AAA	Phantom Section TSL	RightHead HSL
Conversion Factor	8.15	Test Distance [mm]	0.00
Communication Configuration	IEEE 802.11b WiFi 2.4 GHz (DSSS, 1 Mbps, 99pc duty cycle)		

Hardware Setup

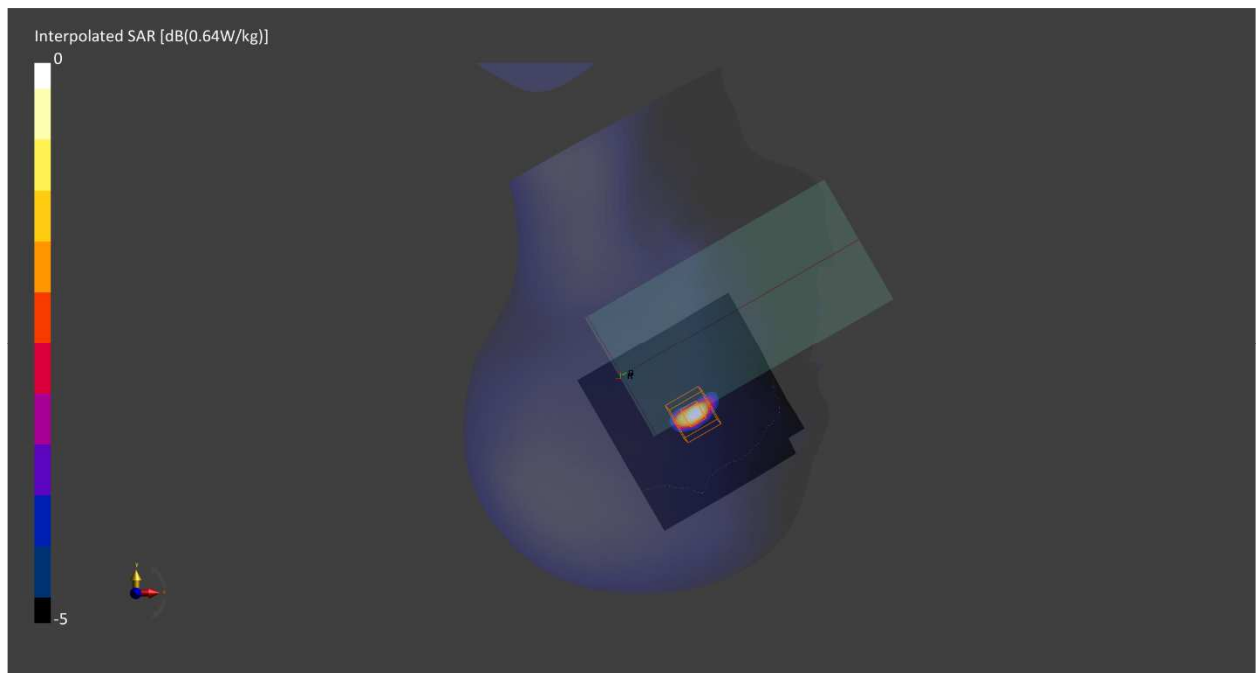
Probe Calibration Date	EX3DV4 - SN7711 2022-03-11	Phantom	Twin-SAM V5.0 (30deg probe tilt) - SN1742
DAE Calibration Date	DAE4 Sn1716 2022-03-08	TSL Meas. Date	HBBL-600-10000 2022-Jul-29

Scans Setup

	Area Scan	Zoom Scan
Grid Extents [mm]	100.0 x 100.0	50.0 x 50.0 x 30.0
Grid Steps [mm]	10.0 x 10.0	5.0 x 5.0 x 1.5
Sensor Surface [mm]	3.0	1.4
Graded Grid	Yes	Yes
M2/M1 [%]		77.1
Dist 3dB Peak [mm]		6.0

Measurement Results

	Area Scan	Zoom Scan
psSAR1g [W/Kg]	0.422	0.435
psSAR10g [W/Kg]	0.160	0.157
Power Drift [dB]	0.01	0.01



Measurement Report for WLAN 5GHz, CHEEK, Main, Normal

Exposure Conditions

Band	WLAN 5GHz	TSL Permittivity	35.1
Frequency [MHz] Channel Number	5250.0 50	TSL Conductivity [S/m]	4.70
Group UID	WLAN 10554-AAD	Phantom Section TSL	RightHead HSL
Conversion Factor	5.14	Test Distance [mm]	0.00
Communication Configuration	IEEE 802.11ac WiFi (160MHz, MCS0, 99pc duty cycle)		

Hardware Setup

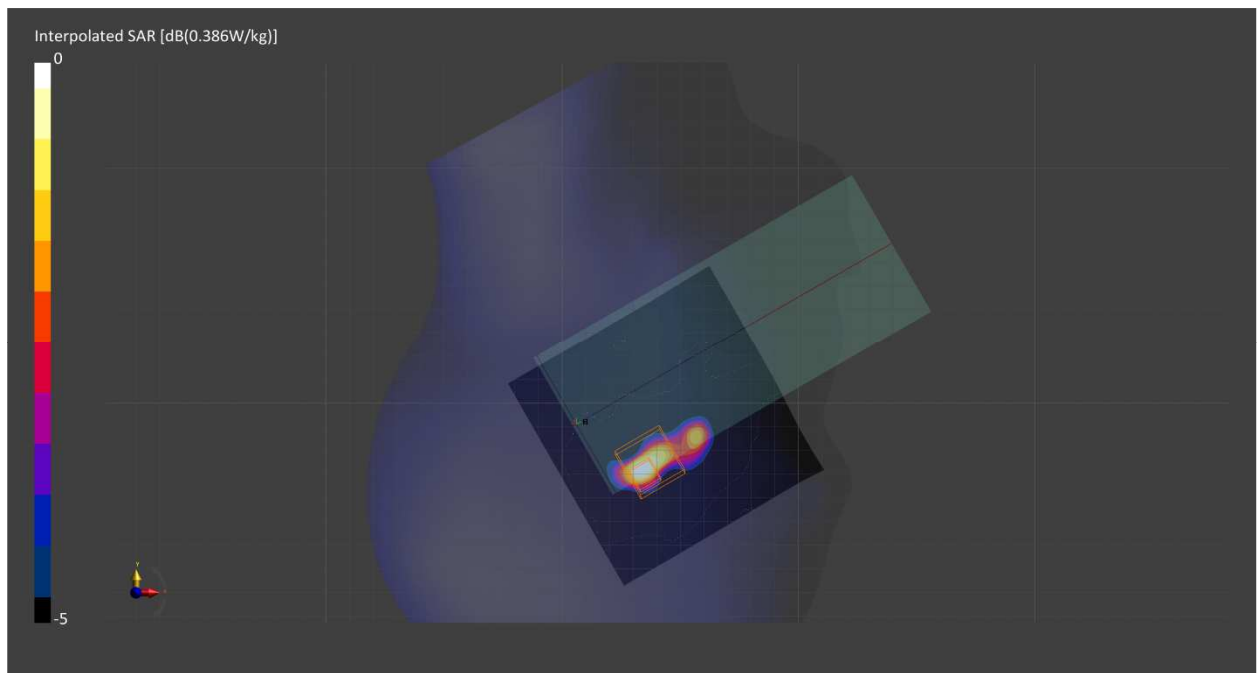
Probe Calibration Date	EX3DV4 - SN7549 2022-02-21	Phantom	Twin-SAM V8.0 (30deg probe tilt) - SN2084
DAE Calibration Date	DAE4 Sn1715 2022-02-22	TSL Meas. Date	HBBL-600-10000 2022-Aug-01

Scans Setup

	Area Scan	Zoom Scan
Grid Extents [mm]	100.0 x 100.0	26.0 x 26.0 x 22.0
Grid Steps [mm]	10.0 x 10.0	2.6 x 2.6 x 1.4
Sensor Surface [mm]	3.0	1.4
Graded Grid	Yes	Yes
M2/M1 [%]		63.5
Dist 3dB Peak [mm]		3.7

Measurement Results

	Area Scan	Zoom Scan
psSAR1g [W/Kg]	0.245	0.320
psSAR10g [W/Kg]	0.082	0.087
Power Drift [dB]	-0.04	0.09



Measurement Report for WLAN 5GHz, BACK, Normal, Wi-Fi Sub Ant

Exposure Conditions

Band	WLAN 5GHz	TSL Permittivity	34.5
Frequency [MHz] Channel Number	5570.0 114	TSL Conductivity [S/m]	5.07
Group UID	WLAN 10554-AAD	Phantom Section TSL	Flat HSL
Conversion Factor	4.56	Test Distance [mm]	0.00
Communication Configuration	IEEE 802.11ac WiFi (160MHz, MCS0, 99pc duty cycle)		

Hardware Setup

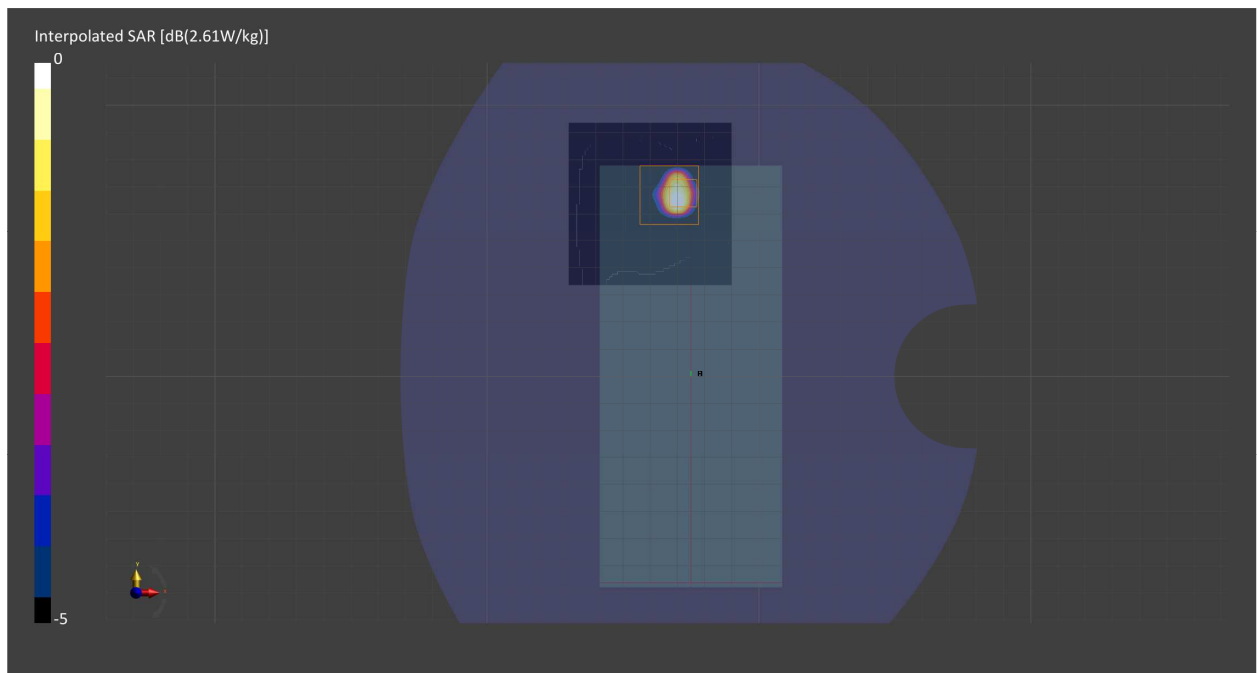
Probe Calibration Date	EX3DV4 - SN7549 2022-02-21	Phantom	Twin-SAM V8.0 (30deg probe tilt) - SN2084
DAE Calibration Date	DAE4 Sn1715 2022-02-22	TSL Meas. Date	HBBL-600-10000 2022-Aug-01

Scans Setup

	Area Scan	Zoom Scan
Grid Extents [mm]	60.0 x 60.0	22.0 x 22.0 x 22.0
Grid Steps [mm]	10.0 x 10.0	2.6 x 2.6 x 1.2
Sensor Surface [mm]	3.0	1.4
Graded Grid	Yes	Yes
M2/M1 [%]		61.3
Dist 3dB Peak [mm]		3.7

Measurement Results

	Area Scan	Zoom Scan
psSAR1g [W/Kg]	1.71	2.21
psSAR10g [W/Kg]	0.437	0.479
Power Drift [dB]	0.00	-0.08



Measurement Report for ISM 2.4 GHz Band, CHEEK, Main, Normal

Exposure Conditions

Band	ISM 2.4 GHz Band	TSL Permittivity	37.9
Frequency [MHz] Channel Number	2441.0 39	TSL Conductivity [S/m]	1.81
Group UID	Bluetooth 10032-CAA	Phantom Section TSL	RightHead HSL
Conversion Factor	8.15	Test Distance [mm]	0.00
Communication Configuration	IEEE 802.15.1 Bluetooth (GFSK, DH5)		

Hardware Setup

Probe Calibration Date	EX3DV4 - SN7711 2022-03-11	Phantom	Twin-SAM V5.0 (30deg probe tilt) - SN1742
DAE Calibration Date	DAE4 Sn1716 2022-03-08	TSL Meas. Date	HBBL-600-10000 2022-Jul-29

Scans Setup

	Area Scan	Zoom Scan
Grid Extents [mm]	100.0 x 100.0	50.0 x 50.0 x 30.0
Grid Steps [mm]	10.0 x 10.0	5.0 x 5.0 x 1.5
Sensor Surface [mm]	3.0	1.4
Graded Grid	Yes	Yes
M2/M1 [%]		62.4
Dist 3dB Peak [mm]		5.9

Measurement Results

	Area Scan	Zoom Scan
psSAR1g [W/Kg]	0.177	0.178
psSAR10g [W/Kg]	0.066	0.064
Power Drift [dB]	-0.29	0.08

