

2022-07-28 System Performance Check Report D5GHzV2 - SN1213

Summary

Dipole	D5GHzV2 - SN1213		
Frequency [MHz]	5750.0		
Phantom Section TSL	Flat HSL	Dev. Peak [%]	-7.9
Power [dBm]	17.0	Iso. Error [%]	3.1

Exposure Conditions

Dipole Distance [mm]	10	TSL Permittivity	34.0
Conversion Factor	4.7	TSL Conductivity [S/m]	5.08

Hardware Setup

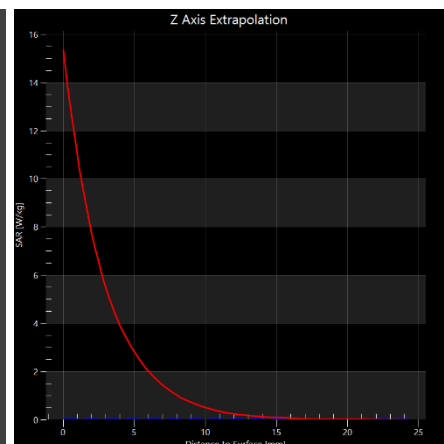
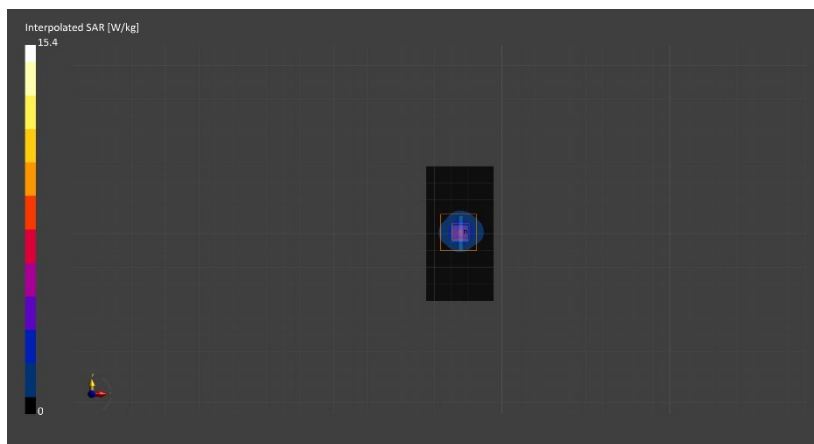
Probe Calibration Date	EX3DV4 - SN7549 2022-02-21	Phantom	Twin-SAM V8.0 (30deg probe tilt) - SN2084
DAE Calibration Date	DAE4 Sn1715 2022-02-22	TSL Meas. Date	HBBL-600-10000 2022-Jul-28

Scans Setup

	Area Scan	Zoom Scan
Grid Extents [mm]	40.0 x 80.0	22.0 x 22.0 x 22.0
Grid Steps [mm]	10.0 x 10.0	4.0 x 4.0 x 1.4
Sensor Surface [mm]	3.0	1.4
Graded Grid	Yes	Yes
M2/M1 [%]		60.5
Dist 3dB Peak [mm]		7.6

Measurement Results

	Area Scan	Zoom Scan
psSAR1g [W/Kg]	3.41	3.61
psSAR10g [W/Kg]	0.970	1.02
Power Drift [dB]	0.01	-0.00



2022-08-01 System Performance Check Report D5GHzV2 - SN1213

Summary

Dipole	D5GHzV2 - SN1213		
Frequency [MHz]	5250.0		
Phantom Section TSL	Flat HSL	Dev. Peak [%]	-1.5
Power [dBm]	17.0	Iso. Error [%]	-2.0

Exposure Conditions

Dipole Distance [mm]	10	TSL Permittivity	35.1
Conversion Factor	5.14	TSL Conductivity [S/m]	4.70

Hardware Setup

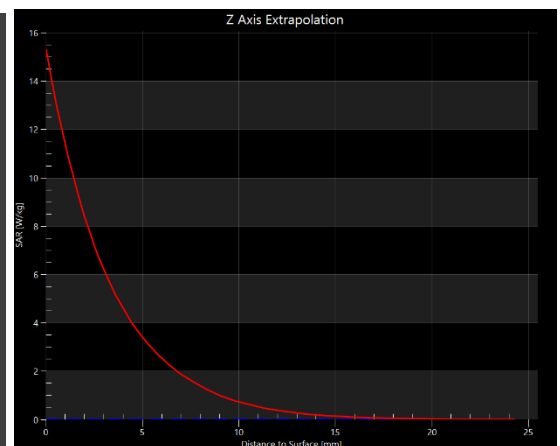
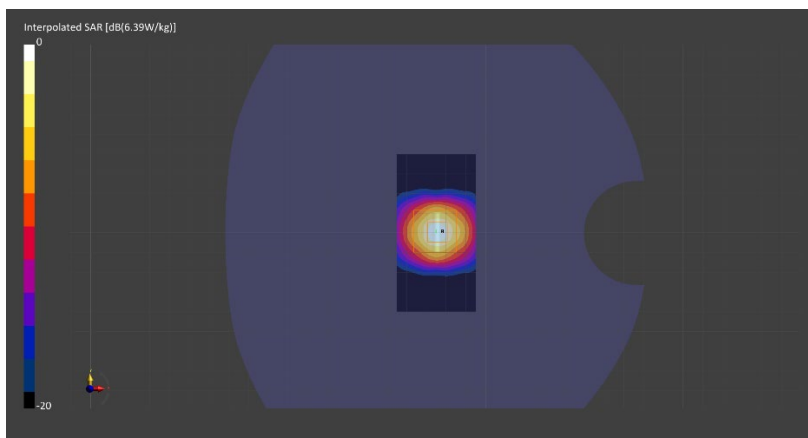
Probe Calibration Date	EX3DV4 - SN7549 2022-02-21	Phantom	Twin-SAM V8.0 (30deg probe tilt) - SN2084
DAE Calibration Date	DAE4 Sn1715 2022-02-22	TSL Meas. Date	HBBL-600-10000 2022-Aug-01

Scans Setup

	Area Scan	Zoom Scan
Grid Extents [mm]	40.0 x 80.0	22.0 x 22.0 x 22.0
Grid Steps [mm]	10.0 x 10.0	4.0 x 4.0 x 1.4
Sensor Surface [mm]	3.0	1.4
Graded Grid	Yes	Yes
M2/M1 [%]		65.0
Dist 3dB Peak [mm]		7.4

Measurement Results

	Area Scan	Zoom Scan
psSAR1g [W/Kg]	3.88	4.00
psSAR10g [W/Kg]	1.10	1.14
Power Drift [dB]	-0.07	-0.08



2022-08-01 System Performance Check Report D5GHzV2 - SN1213

Summary

Dipole	D5GHzV2 - SN1213		
Frequency [MHz]	5600.0		
Phantom Section TSL	Flat HSL	Dev. Peak [%]	3.6
Power [dBm]	17.0	Iso. Error [%]	-2.1

Exposure Conditions

Dipole Distance [mm]	10	TSL Permittivity	34.4
Conversion Factor	4.56	TSL Conductivity [S/m]	5.11

Hardware Setup

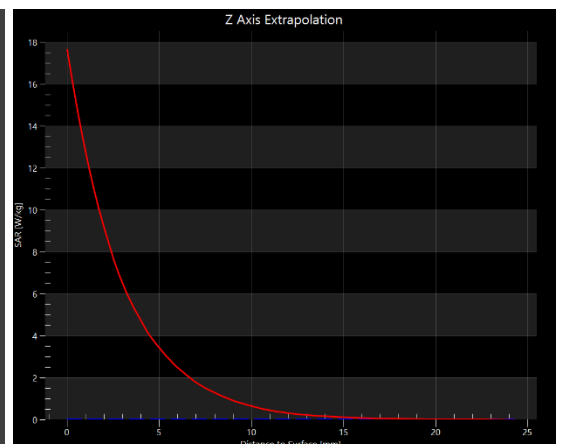
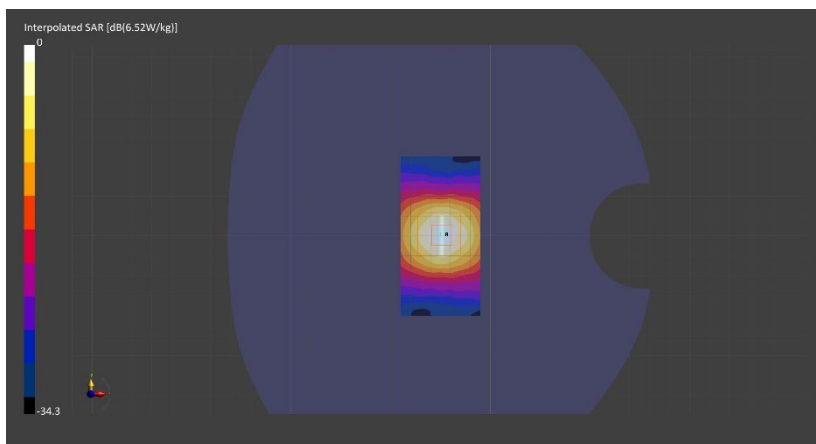
Probe Calibration Date	EX3DV4 - SN7549 2022-02-21	Phantom	Twin-SAM V8.0 (30deg probe tilt) - SN2084
DAE Calibration Date	DAE4 Sn1715 2022-02-22	TSL Meas. Date	HBBL-600-10000 2022-Aug-01

Scans Setup

	Area Scan	Zoom Scan
Grid Extents [mm]	40.0 x 80.0	22.0 x 22.0 x 22.0
Grid Steps [mm]	10.0 x 10.0	4.0 x 4.0 x 1.4
Sensor Surface [mm]	3.0	1.4
Graded Grid	Yes	Yes
M2/M1 [%]		62.0
Dist 3dB Peak [mm]		7.4

Measurement Results

	Area Scan	Zoom Scan
psSAR1g [W/Kg]	4.01	4.26
psSAR10g [W/Kg]	1.13	1.20
Power Drift [dB]	0.03	0.01



2022-07-07 System Performance Check Report D750V3 - SN1139

Summary

Dipole	D750V3 - SN1139		
Frequency [MHz]	750.0		
Phantom Section TSL	Flat HSL	Dev. Peak [%]	0.9
Power [dBm]	17.0	Iso. Error [%]	-3.5

Exposure Conditions

Dipole Distance [mm]	15	TSL Permittivity	40.3
Conversion Factor	10.25	TSL Conductivity [S/m]	0.912

Hardware Setup

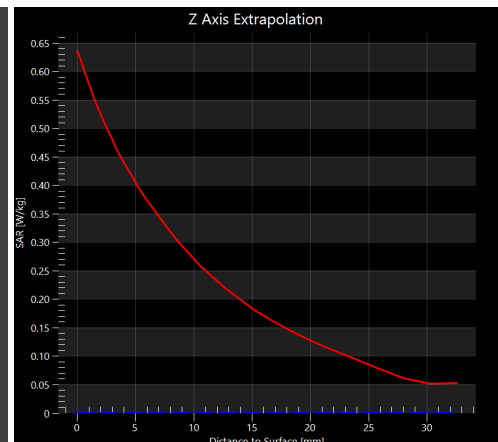
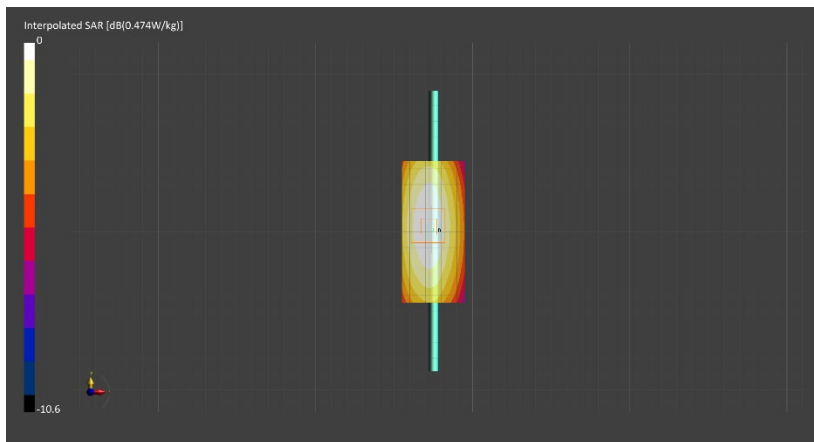
Probe Calibration Date	EX3DV4 - SN7709 2022-02-25	Phantom	Twin-SAM V8.0 (30deg probe tilt) - SN2082
DAE Calibration Date	DAE4 Sn1714 2022-02-23	TSL Meas. Date	HBBL-600-10000 2022-Jul-07

Scans Setup

	Area Scan	Zoom Scan
Grid Extents [mm]	40.0 x 90.0	30.0 x 30.0 x 30.0
Grid Steps [mm]	10.0 x 15.0	6.0 x 6.0 x 1.5
Sensor Surface [mm]	3.0	1.4
Graded Grid	Yes	Yes
M2/M1 [%]		86.9
Dist 3dB Peak [mm]		> 15.0

Measurement Results

	Area Scan	Zoom Scan
psSAR1g [W/Kg]	0.414	0.412
psSAR10g [W/Kg]	0.278	0.268
Power Drift [dB]	0.00	0.01



2022-07-11 System Performance Check Report D900V2 - SN1d180

Summary

Dipole	D900V2 - SN1d180		
Frequency [MHz]	900.0		
Phantom Section TSL	Flat HSL	Dev. Peak [%]	8.5
Power [dBm]	17.0	Iso. Error [%]	3.4

Exposure Conditions

Dipole Distance [mm]	15	TSL Permittivity	40.0
Conversion Factor	9.77	TSL Conductivity [S/m]	0.990

Hardware Setup

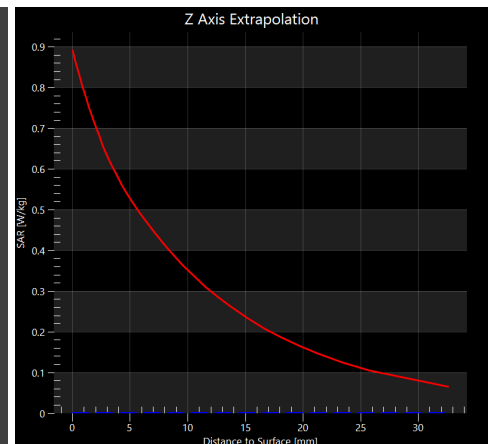
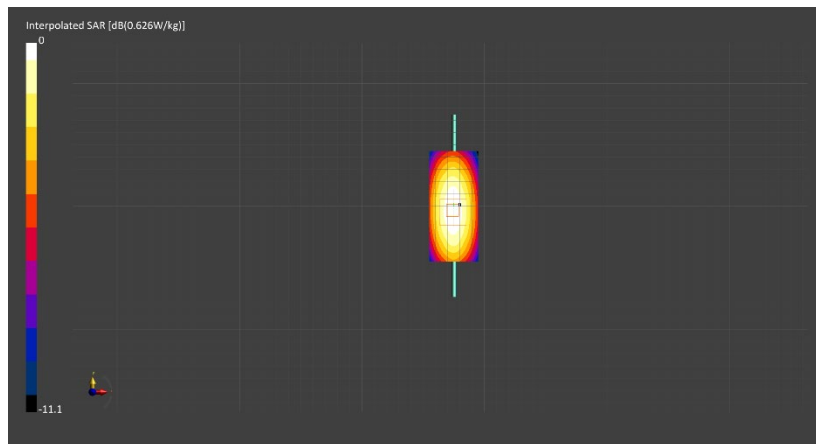
Probe Calibration Date	EX3DV4 - SN7709 2022-02-25	Phantom	Twin-SAM V8.0 (30deg probe tilt) - SN2082
DAE Calibration Date	DAE4 Sn1714 2022-02-23	TSL Meas. Date	HBBL-600-10000 2022-Jul-11

Scans Setup

	Area Scan	Zoom Scan
Grid Extents [mm]	40.0 x 90.0	30.0 x 30.0 x 30.0
Grid Steps [mm]	10.0 x 15.0	6.0 x 6.0 x 1.5
Sensor Surface [mm]	3.0	1.4
Graded Grid	Yes	Yes
M2/M1 [%]		84.5
Dist 3dB Peak [mm]		20.4

Measurement Results

	Area Scan	Zoom Scan
psSAR1g [W/Kg]	0.541	0.545
psSAR10g [W/Kg]	0.354	0.348
Power Drift [dB]	-0.00	0.04



2022-07-21 System Performance Check Report D1900V2 - SN5d202

Summary

Dipole	D1900V2 - SN5d202		
Frequency [MHz]	1900.0		
Phantom Section TSL	Flat HSL	Dev. Peak [%]	6.3
Power [dBm]	17.0	Iso. Error [%]	3.5

Exposure Conditions

Dipole Distance [mm]	10	TSL Permittivity	38.4
Conversion Factor	8.51	TSL Conductivity [S/m]	1.44

Hardware Setup

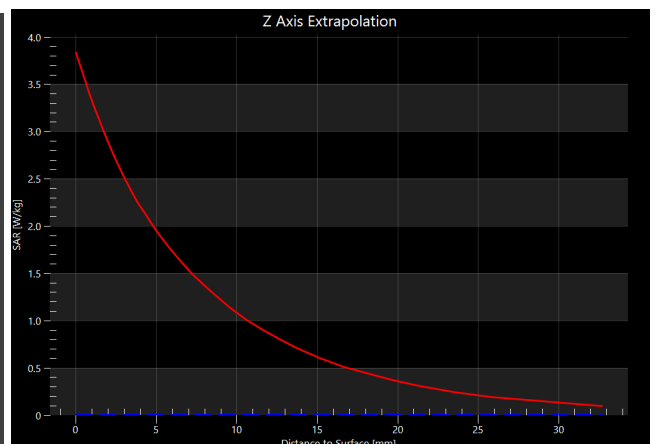
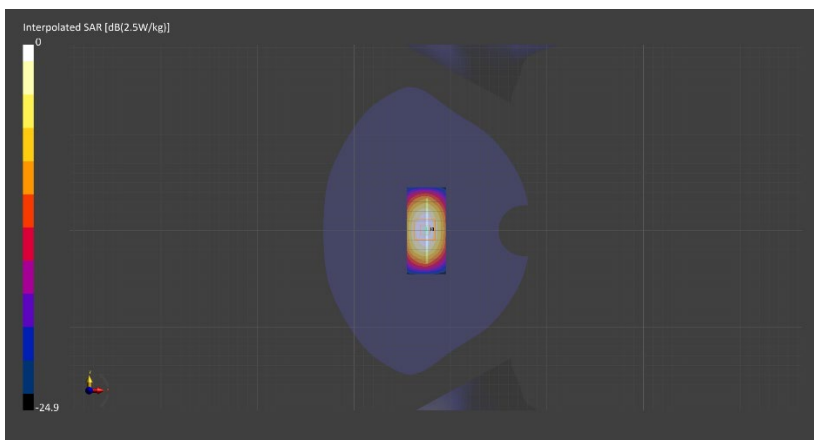
Probe Calibration Date	EX3DV4 - SN7709 2022-02-25	Phantom	Twin-SAM V8.0 (30deg probe tilt) - SN2082
DAE Calibration Date	DAE4 Sn1714 2022-02-23	TSL Meas. Date	HBBL-600-10000 2022-Jul-21

Scans Setup

	Area Scan	Zoom Scan
Grid Extents [mm]	40.0 x 90.0	30.0 x 30.0 x 30.0
Grid Steps [mm]	10.0 x 15.0	6.0 x 6.0 x 1.5
Sensor Surface [mm]	3.0	1.4
Graded Grid	Yes	Yes
M2/M1 [%]		81.1
Dist 3dB Peak [mm]		10.8

Measurement Results

	Area Scan	Zoom Scan
psSAR1g [W/Kg]	2.00	2.00
psSAR10g [W/Kg]	1.05	1.03
Power Drift [dB]	-0.00	0.00



2022-07-28 System Performance Check Report D5GHzV2 - SN1213

Summary

Dipole	D5GHzV2 - SN1213		
Frequency [MHz]	5250.0		
Phantom Section TSL	Flat HSL	Dev. Peak [%]	-15.0
Power [dBm]	17.0	Iso. Error [%]	4.7

Exposure Conditions

Dipole Distance [mm]	10	TSL Permittivity	36.3
Conversion Factor	5.75	TSL Conductivity [S/m]	4.59

Hardware Setup

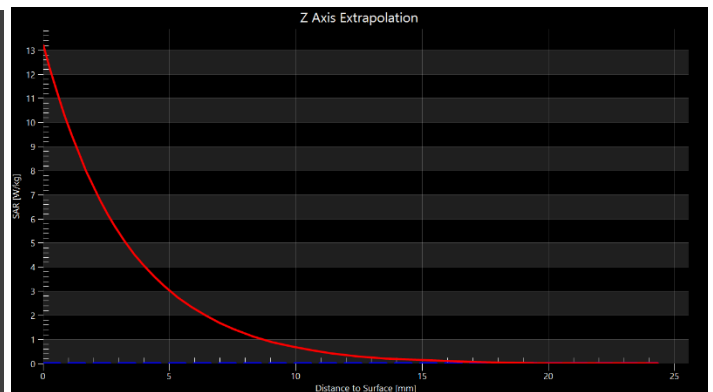
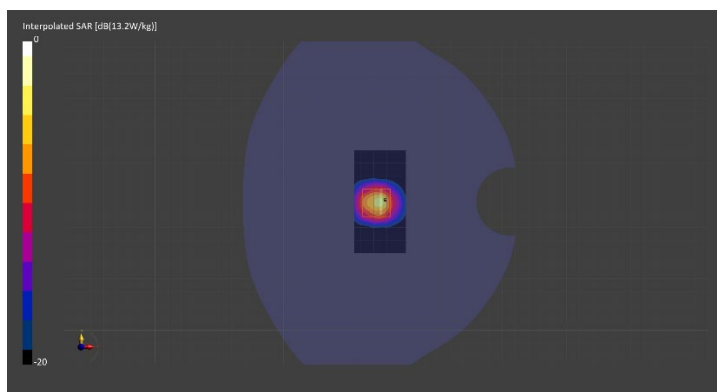
Probe Calibration Date	EX3DV4 - SN7709 2022-02-25	Phantom	Twin-SAM V8.0 (30deg probe tilt) - SN2082
DAE Calibration Date	DAE4 Sn1714 2022-02-23	TSL Meas. Date	HBBL-600-10000 2022-Jul-28

Scans Setup

	Area Scan	Zoom Scan
Grid Extents [mm]	40.0 x 80.0	22.0 x 22.0 x 22.0
Grid Steps [mm]	10.0 x 10.0	4.0 x 4.0 x 1.4
Sensor Surface [mm]	3.0	1.4
Graded Grid	Yes	Yes
M2/M1 [%]		65.2
Dist 3dB Peak [mm]		7.4

Measurement Results

	Area Scan	Zoom Scan
psSAR1g [W/Kg]	3.29	3.54
psSAR10g [W/Kg]	0.975	1.02
Power Drift [dB]	-0.01	-0.00



2022-07-28 System Performance Check Report D5GHzV2 - SN1213

Summary

Dipole	D5GHzV2 - SN1213		
Frequency [MHz]	5600.0		
Phantom Section TSL	Flat HSL	Dev. Peak [%]	-7.9
Power [dBm]	17.0	Iso. Error [%]	3.7

Exposure Conditions

Dipole Distance [mm]	10	TSL Permittivity	35.6
Conversion Factor	5.08	TSL Conductivity [S/m]	4.99

Hardware Setup

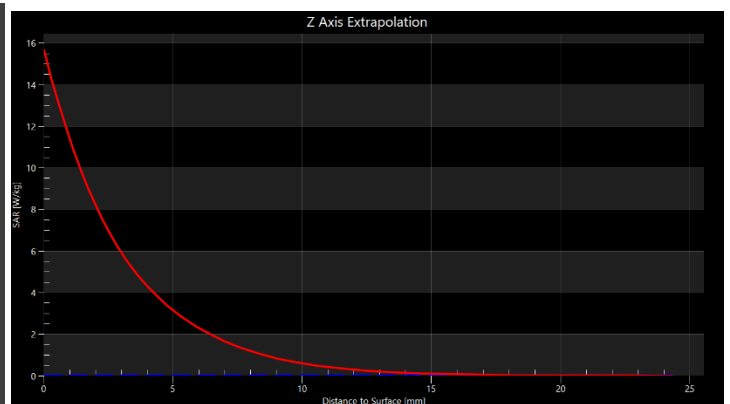
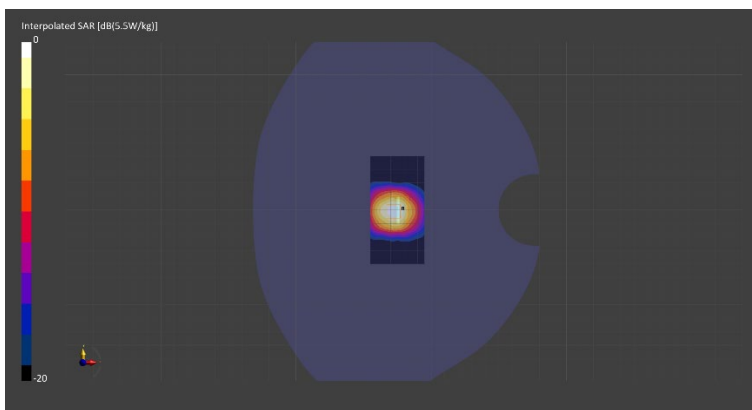
Probe Calibration Date	EX3DV4 - SN7709 2022-02-25	Phantom	Twin-SAM V8.0 (30deg probe tilt) - SN2082
DAE Calibration Date	DAE4 Sn1714 2022-02-23	TSL Meas. Date	HBBL-600-10000 2022-Jul-28

Scans Setup

	Area Scan	Zoom Scan
Grid Extents [mm]	40.0 x 80.0	22.0 x 22.0 x 22.0
Grid Steps [mm]	10.0 x 10.0	4.0 x 4.0 x 1.4
Sensor Surface [mm]	3.0	1.4
Graded Grid	Yes	Yes
M2/M1 [%]		62.5
Dist 3dB Peak [mm]		7.2

Measurement Results

	Area Scan	Zoom Scan
psSAR1g [W/Kg]	3.63	3.90
psSAR10g [W/Kg]	1.06	1.10
Power Drift [dB]	-0.00	0.01



2022-08-01 System Performance Check Report D5GHzV2 - SN1213

Summary

Dipole	D5GHzV2 - SN1213		
Frequency [MHz]	5750.0		
Phantom Section TSL	Flat HSL	Dev. Peak [%]	-12.5
Power [dBm]	17.0	Iso. Error [%]	3.0

Exposure Conditions

Dipole Distance [mm]	10	TSL Permittivity	34.5
Conversion Factor	5.25	TSL Conductivity [S/m]	5.16

Hardware Setup

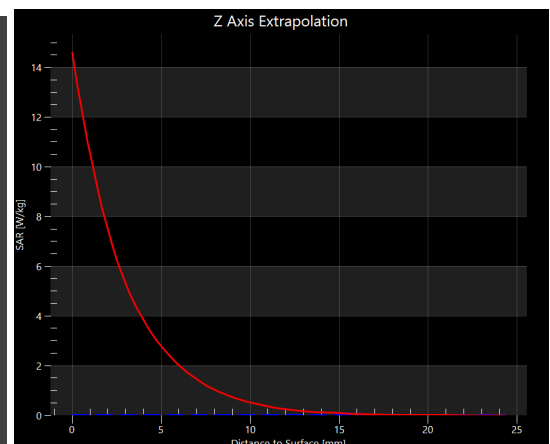
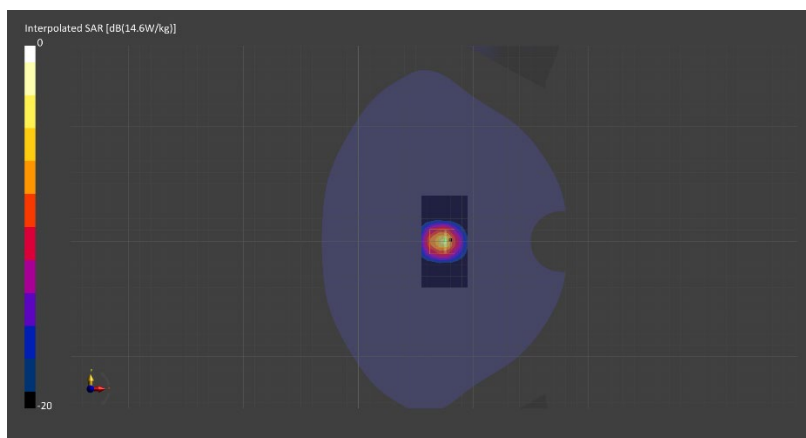
Probe Calibration Date	EX3DV4 - SN7709 2022-02-25	Phantom	Twin-SAM V8.0 (30deg probe tilt) - SN2082
DAE Calibration Date	DAE4 Sn1714 2022-02-23	TSL Meas. Date	HBBL-600-10000 2022-Aug-01

Scans Setup

	Area Scan	Zoom Scan
Grid Extents [mm]	40.0 x 80.0	22.0 x 22.0 x 22.0
Grid Steps [mm]	10.0 x 10.0	4.0 x 4.0 x 1.4
Sensor Surface [mm]	3.0	1.4
Graded Grid	Yes	Yes
M2/M1 [%]		61.3
Dist 3dB Peak [mm]		7.4

Measurement Results

	Area Scan	Zoom Scan
psSAR1g [W/Kg]	3.36	3.52
psSAR10g [W/Kg]	0.968	1.01
Power Drift [dB]	-0.02	-0.02



2022-07-11 System Performance Check Report D1900V2 - SN5d202

Summary

Dipole	D1900V2 - SN5d202		
Frequency [MHz]	1900.0		
Phantom Section TSL	Flat HSL	Dev. Peak [%]	5.9
Power [dBm]	17.0	Iso. Error [%]	0.7

Exposure Conditions

Dipole Distance [mm]	10	TSL Permittivity	39.3
Conversion Factor	8.42	TSL Conductivity [S/m]	1.45

Hardware Setup

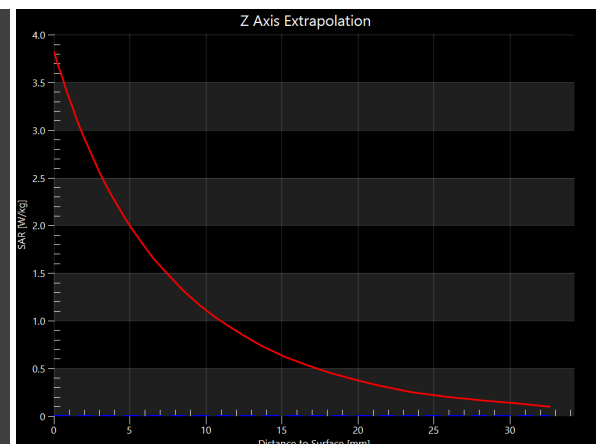
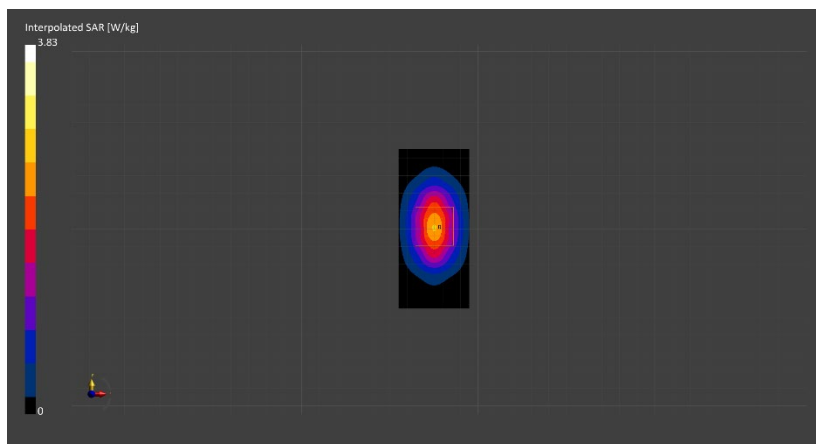
Probe Calibration Date	EX3DV4 - SN7711 2022-03-11	Phantom	Twin-SAM V5.0 (30deg probe tilt) - SN1742
DAE Calibration Date	DAE4 Sn1716 2022-03-08	TSL Meas. Date	HBBL-600-10000 2022-Jul-11

Scans Setup

	Area Scan	Zoom Scan
Grid Extents [mm]	40.0 x 90.0	30.0 x 30.0 x 30.0
Grid Steps [mm]	10.0 x 15.0	6.0 x 6.0 x 1.5
Sensor Surface [mm]	3.0	1.4
Graded Grid	Yes	Yes
M2/M1 [%]		82.4
Dist 3dB Peak [mm]		9.6

Measurement Results

	Area Scan	Zoom Scan
psSAR1g [W/Kg]	2.04	2.02
psSAR10g [W/Kg]	1.05	1.04
Power Drift [dB]	-0.02	0.00



2022-07-15 System Performance Check Report D2600V2 - SN1104

Summary

Dipole	D2600V2 - SN1104		
Frequency [MHz]	2600.0		
Phantom Section TSL	Flat HSL	Dev. Peak [%]	-1.7
Power [dBm]	17.0	Iso. Error [%]	0.9

Exposure Conditions

Dipole Distance [mm]	10	TSL Permittivity	39.4
Conversion Factor	8.01	TSL Conductivity [S/m]	1.96

Hardware Setup

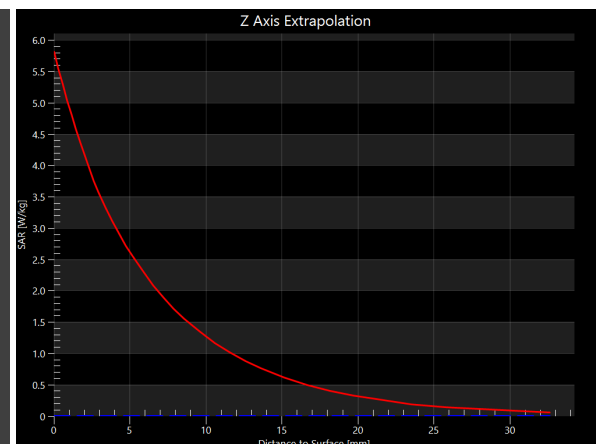
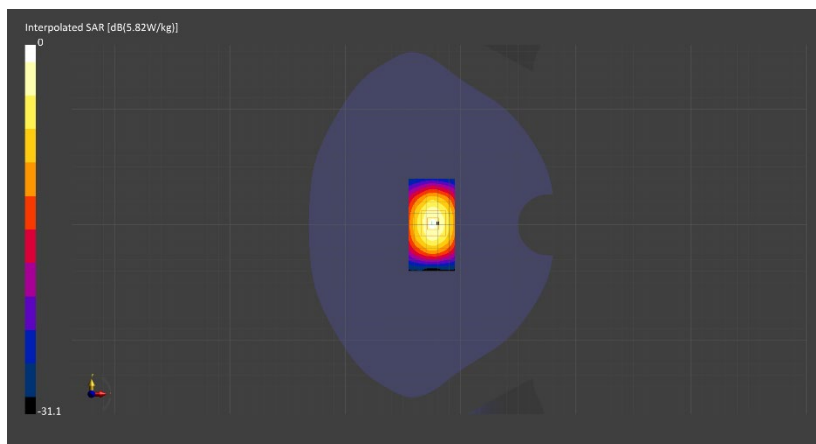
Probe Calibration Date	EX3DV4 - SN7711 2022-03-11	Phantom	Twin-SAM V5.0 (30deg probe tilt) - SN1742
DAE Calibration Date	DAE4 Sn1716 2022-03-08	TSL Meas. Date	HBBL-600-10000 2022-Jul-15

Scans Setup

	Area Scan	Zoom Scan
Grid Extents [mm]	40.0 x 80.0	30.0 x 30.0 x 30.0
Grid Steps [mm]	10.0 x 10.0	5.0 x 5.0 x 1.5
Sensor Surface [mm]	3.0	1.4
Graded Grid	Yes	Yes
M2/M1 [%]		77.9
Dist 3dB Peak [mm]		9.0

Measurement Results

	Area Scan	Zoom Scan
psSAR1g [W/Kg]	2.62	2.64
psSAR10g [W/Kg]	1.18	1.18
Power Drift [dB]	-0.00	0.02



2022-07-16 System Performance Check Report D900V2 - SN1d180

Summary

Dipole	D900V2 - SN1d180		
Frequency [MHz]	900.0		
Phantom Section TSL	Flat HSL	Dev. Peak [%]	3.5
Power [dBm]	17.0	Iso. Error [%]	0.9

Exposure Conditions

Dipole Distance [mm]	15	TSL Permittivity	41.9
Conversion Factor	9.82	TSL Conductivity [S/m]	0.986

Hardware Setup

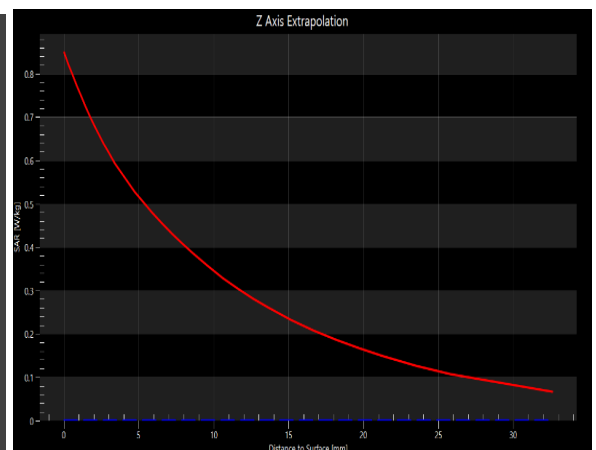
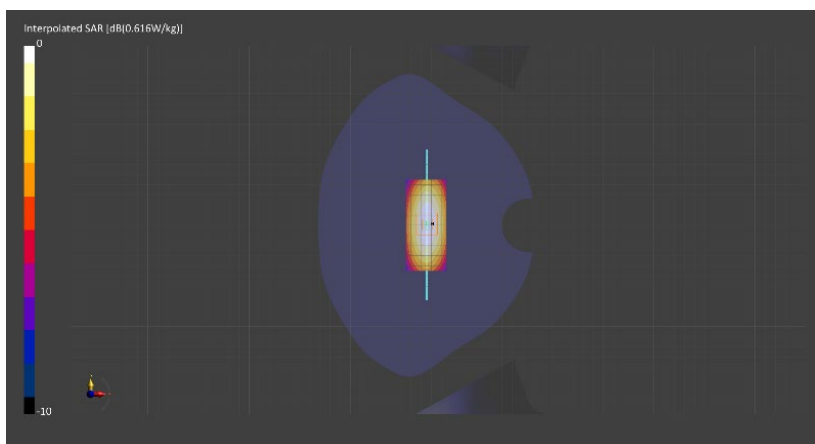
Probe Calibration Date	EX3DV4 - SN7711 2022-03-11	Phantom	Twin-SAM V5.0 (30deg probe tilt) - SN1742
DAE Calibration Date	DAE4 Sn1716 2022-03-08	TSL Meas. Date	HBBL-600-10000 2022-Jul-16

Scans Setup

	Area Scan	Zoom Scan
Grid Extents [mm]	40.0 x 90.0	30.0 x 30.0 x 30.0
Grid Steps [mm]	10.0 x 15.0	6.0 x 6.0 x 1.5
Sensor Surface [mm]	3.0	1.4
Graded Grid	Yes	Yes
M2/M1 [%]		85.0
Dist 3dB Peak [mm]		18.0

Measurement Results

	Area Scan	Zoom Scan
psSAR1g [W/Kg]	0.530	0.532
psSAR10g [W/Kg]	0.346	0.341
Power Drift [dB]	0.00	0.02



2022-07-16 System Performance Check Report D1750V2 - SN1136

Summary

Dipole	D1750V2 - SN1136		
Frequency [MHz]	1750.0		
Phantom Section TSL	Flat HSL	Dev. Peak [%]	6.4
Power [dBm]	17.0	Iso. Error [%]	0.6

Exposure Conditions

Dipole Distance [mm]	10	TSL Permittivity	40.2
Conversion Factor	8.89	TSL Conductivity [S/m]	1.40

Hardware Setup

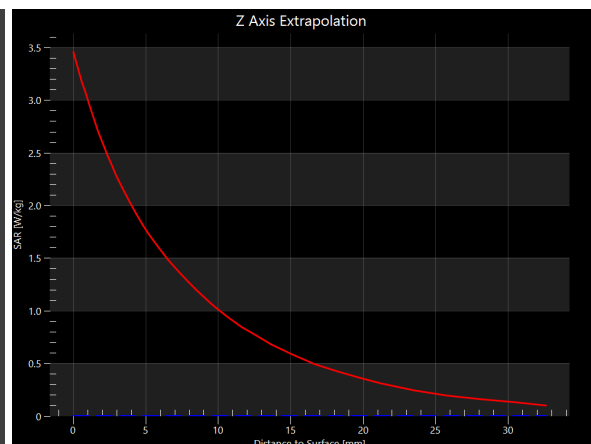
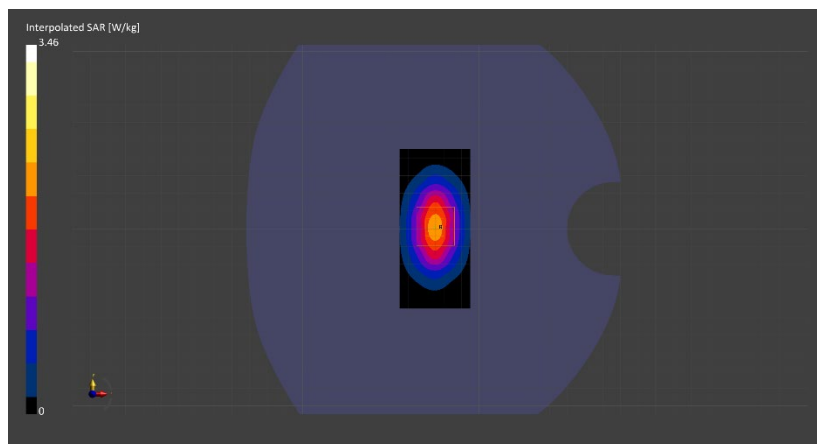
Probe Calibration Date	EX3DV4 - SN7711 2022-03-11	Phantom	Twin-SAM V5.0 (30deg probe tilt) - SN1742
DAE Calibration Date	DAE4 Sn1716 2022-03-08	TSL Meas. Date	HBBL-600-10000 2022-Jul-16

Scans Setup

	Area Scan	Zoom Scan
Grid Extents [mm]	40.0 x 90.0	30.0 x 30.0 x 30.0
Grid Steps [mm]	10.0 x 15.0	6.0 x 6.0 x 1.5
Sensor Surface [mm]	3.0	1.4
Graded Grid	Yes	Yes
M2/M1 [%]		81.5
Dist 3dB Peak [mm]		10.3

Measurement Results

	Area Scan	Zoom Scan
psSAR1g [W/Kg]	1.82	1.82
psSAR10g [W/Kg]	0.966	0.956
Power Drift [dB]	0.00	0.01



2022-07-29 System Performance Check Report D2450V2 - SN963

Summary

Dipole	D2450V2 - SN963		
Frequency [MHz]	2450.0		
Phantom Section TSL	Flat HSL	Dev. Peak [%]	7.0
Power [dBm]	17.0	Iso. Error [%]	0.7

Exposure Conditions

Dipole Distance [mm]	10	TSL Permittivity	37.9
Conversion Factor	8.15	TSL Conductivity [S/m]	1.82

Hardware Setup

Probe Calibration Date	EX3DV4 - SN7711 2022-03-11	Phantom	Twin-SAM V5.0 (30deg probe tilt) - SN1742
DAE Calibration Date	DAE4 Sn1716 2022-03-08	TSL Meas. Date	HBBL-600-10000 2022-Jul-29

Scans Setup

	Area Scan	Zoom Scan
Grid Extents [mm]	40.0 x 80.0	30.0 x 30.0 x 30.0
Grid Steps [mm]	10.0 x 10.0	5.0 x 5.0 x 1.5
Sensor Surface [mm]	3.0	1.4
Graded Grid	Yes	Yes
M2/M1 [%]		79.6
Dist 3dB Peak [mm]		9.0

Measurement Results

	Area Scan	Zoom Scan
psSAR1g [W/Kg]	2.64	2.66
psSAR10g [W/Kg]	1.23	1.23
Power Drift [dB]	-0.00	0.02

