

SONY

Sony Mobile Communications, Inc.

4-12-3 Higashi-shinagawa, Shinagawa-ku, Tokyo, 140-0002, Japan

Remarks

This document is managed in Infodoc.

Date: June 28, 2017

Internal Photos

FCC ID: PY7-46331W

Without external cosmetic parts

(Top Side)



(Front Side)



(Rear Side)



(Right Side)



(Left Side)



(Bottom Side)



Without internal plate

(Top Side)



(Front Side)



(Rear Side)



(Right Side)



(Left Side)



(Bottom Side)



Without Panel and Battery

(Top Side)



(Front Side)



(Rear Side)



(Right Side)



(Left Side)



(Bottom Side)



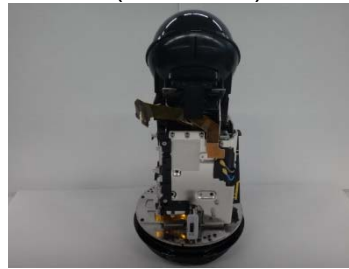
Without PBA

(Top Side/Bottom Side Photo is same as p.10)

(Front Side)



(Rear Side)



(Right Side)



(Left Side)



Antenna location

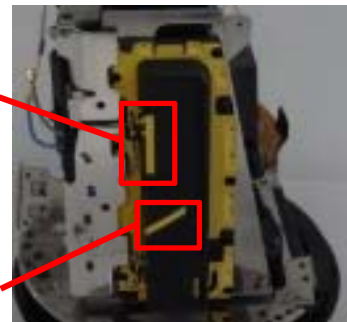
*Zoom up photo from above Rear Side and Left Side photo.

(Rear Side)



NFC Antenna

(Left Side)



BT/WLAN Antenna

GPS Antenna

Without Head and Base block

(Top Side)



(Front Side)



(Rear Side)



(Right Side)



(Left Side)



(Bottom Side)



Base block

(Top Side)



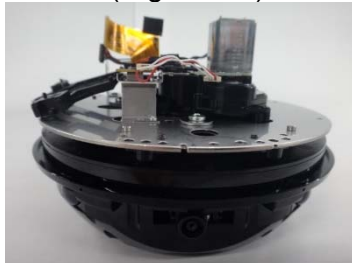
(Front Side)



(Rear Side)



(Right Side)



(Left Side)



(Bottom Side)



Base block without external parts

(Top Side)



(Front Side)



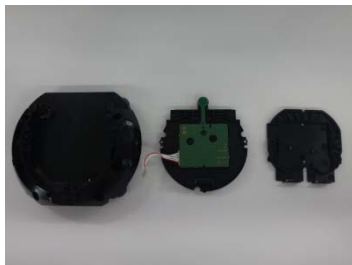
(Rear Side)



(Right Side)



(Left Side)



(SW PBA block)



(Bottom Side)

Head block

(Top Side)



(Front Side)



(Rear Side)



(Right Side)



(Left Side)



(Internal PCB)



(Bottom Side)

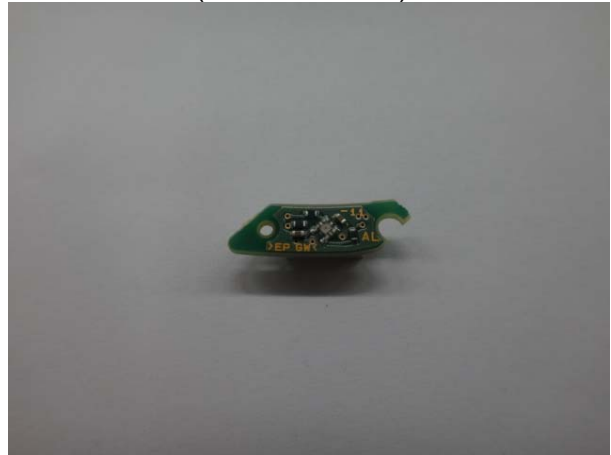


PBA Photo

(AL PBA A-side)



(AL PBA B-side)



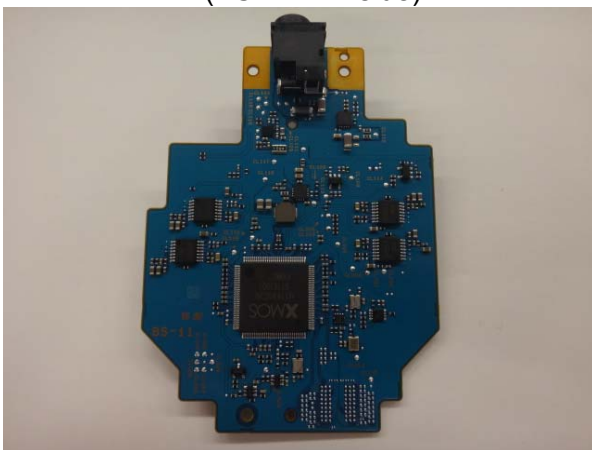
(Batt PBA A-side)



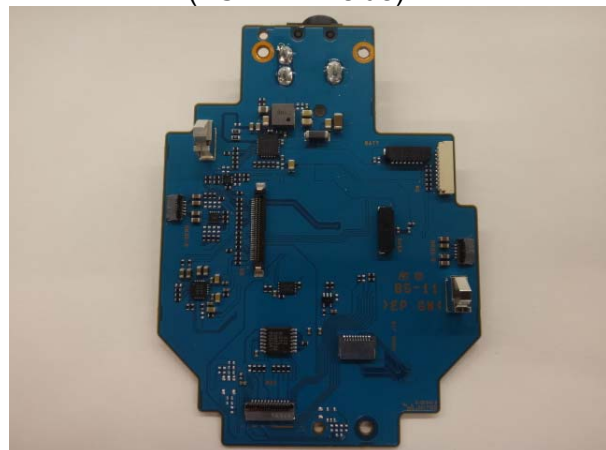
(Batt PBA B-side)



(BS PBA A-side)



(BS PBA B-side)



SONY

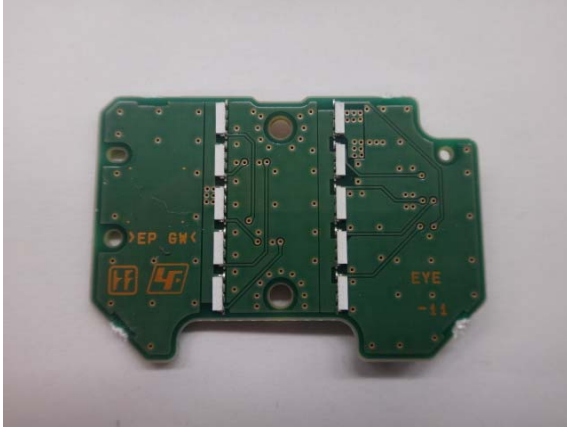
Sony Mobile Communications, Inc.

4-12-3 Higashi-shinagawa, Shinagawa-ku, Tokyo, 140-0002, Japan

Remarks

This document is managed in Infodoc.

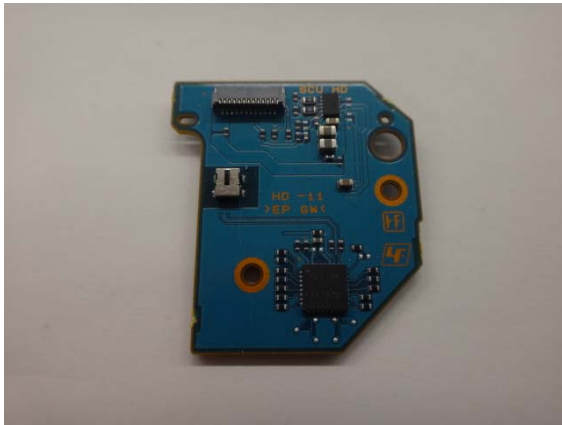
(ELED PBA A-side)



(ELED PBA B-side)



(HD PBA A-side)



(HD PBA B-side)



(KS PBA A-side)



(KS PBA B-side)



SONY

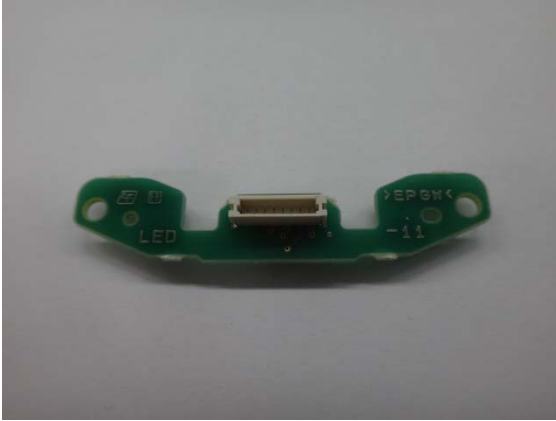
Sony Mobile Communications, Inc.

4-12-3 Higashi-shinagawa, Shinagawa-ku, Tokyo, 140-0002, Japan

Remarks

This document is managed in Infodoc.

(LED PBA A-side)



(LED PBA B-side)



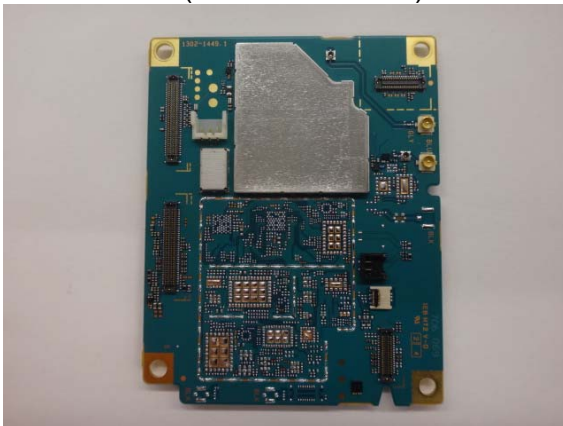
(Motor PBA A-side)



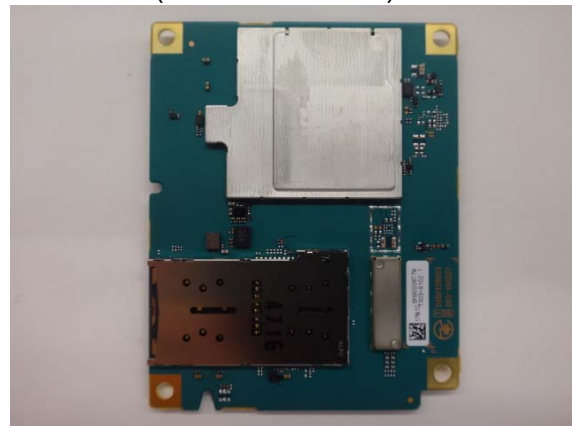
(Motor PBA B-side)



(Main PBA A-side)



(Main PBA B-side)



SONY

Sony Mobile Communications, Inc.

4-12-3 Higashi-shinagawa, Shinagawa-ku, Tokyo, 140-0002, Japan

Remarks

This document is managed in Infodoc.

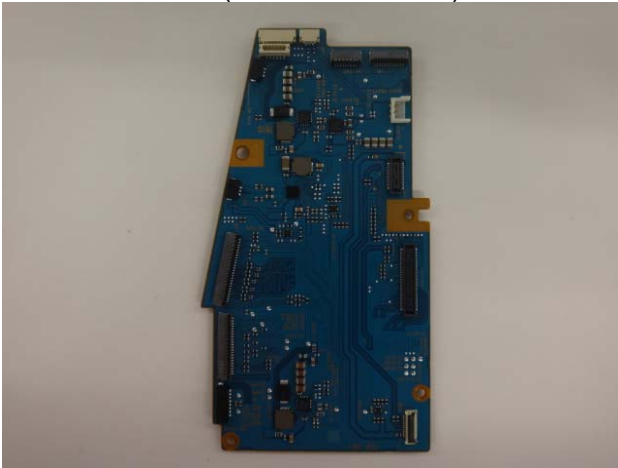
(Main PBA A-side without plate)



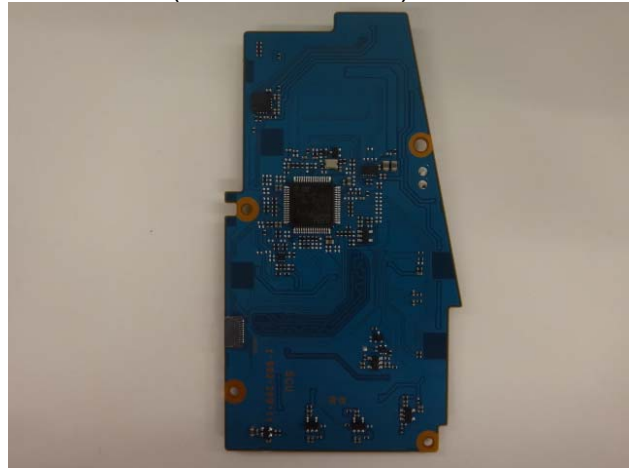
(Main PBA B-side without plate)



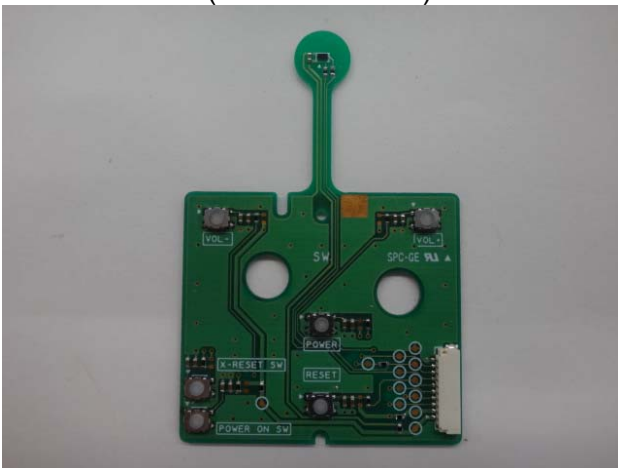
(SCU PBA A-side)



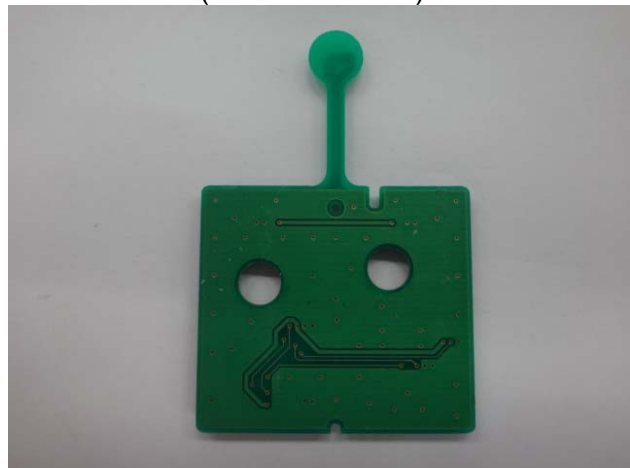
(SCU PBA B-side)



(SW PBA A-side)



(SW PBA B-side)



SONY

Sony Mobile Communications, Inc.

4-12-3 Higashi-shinagawa, Shinagawa-ku, Tokyo, 140-0002, Japan

Remarks

This document is managed in Infodoc.

Panel



Battery

