

Appendix C: System Check Plots

RF SAFETY LABORATORY

System Verification

Verification Conditions

Verification Source	Power [dBm]	Phantom Section	Test Distance [mm]	Signal, UID	Frequency [MHz]	ConvF (x, y, z)
D750V3 - SN1235	23.0	Flat	15	CW, 0	750.000	9.44

Test Setup

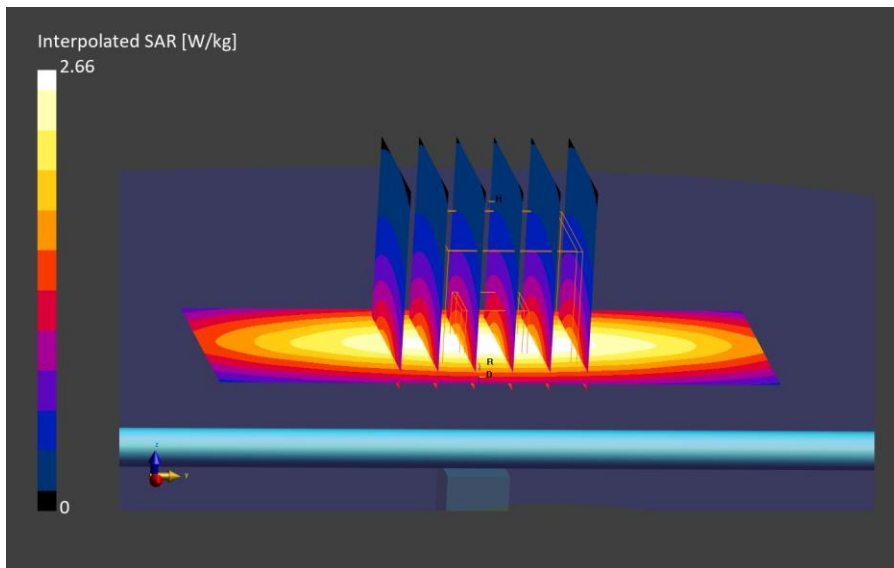
Test Date	Ambient Temp [°C]	TSL Temp [°C]	Measurement SW	Phantom	TSL Type	Cond. [S/m]	Perm.	Probe, Cal. Date	DAE, Cal. Date
2024-01-23	22.5	21.5	16.2.4.2524	Twin-SAM V8.0 - 2159	HSL	0.913	42.6	EX3DV4 - SN7836, 2023-10-11	DAE4ip Sn1839, 2023-10-09

Scans Setup

	Area Scan	Zoom Scan
Grid Extents [mm]	40.0 x 90.0	30.0 x 30.0 x 30.0
Grid Steps [mm]	10.0 x 15.0	6.0 x 6.0 x 1.5
Sensor Surface [mm]	3.0	1.4
Grading Ratio	N/A	1.5

Measurement Results

	SAR [W/kg]	Deviation [%]
psSAR1g	1.67	-3.68
psSAR10g	1.10	-3.11
Peak SAR (Extrapolated)	2.66	5.81



RF SAFETY LABORATORY

System Verification

Verification Conditions

Verification Source	Power [dBm]	Phantom Section	Test Distance [mm]	Signal, UID	Frequency [MHz]	ConvF (x, y, z)
D750V3 - SN1235	23.0	Flat	15	CW, 0	750.000	9.44

Test Setup

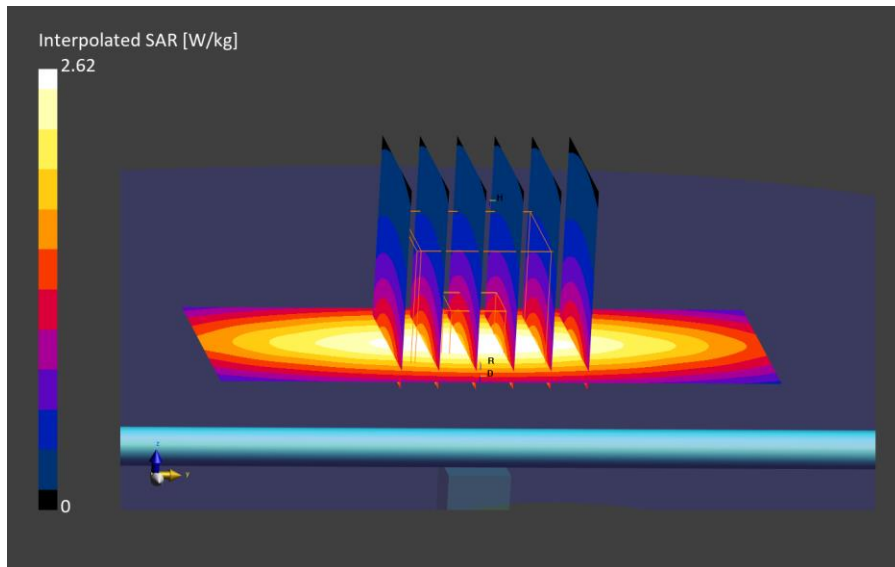
Test Date	Ambient Temp [°C]	TSL Temp [°C]	Measurement SW	Phantom	TSL Type	Cond. [S/m]	Perm.	Probe, Cal. Date	DAE, Cal. Date
2024-01-26	22.5	22.4	16.2.4.2524	Twin-SAM V8.0 - 2159	HSL	0.914	42.1	EX3DV4 - SN7836, 2023-10-11	DAE4ip Sn1839, 2023-10-09

Scans Setup

	Area Scan	Zoom Scan
Grid Extents [mm]	40.0 x 90.0	30.0 x 30.0 x 30.0
Grid Steps [mm]	10.0 x 15.0	6.0 x 6.0 x 1.5
Sensor Surface [mm]	3.0	1.4
Grading Ratio	N/A	1.5

Measurement Results

	SAR [W/kg]	Deviation [%]
psSAR1g	1.66	-4.26
psSAR10g	1.08	-4.87
Peak SAR (Extrapolated)	2.62	4.22



RF SAFETY LABORATORY

System Verification

Verification Conditions

Verification Source	Power [dBm]	Phantom Section	Test Distance [mm]	Signal, UID	Frequency [MHz]	ConvF (x, y, z)
D750V3 – SN1235	20.0	Flat	15	CW, 0	750.000	9.44

Test Setup

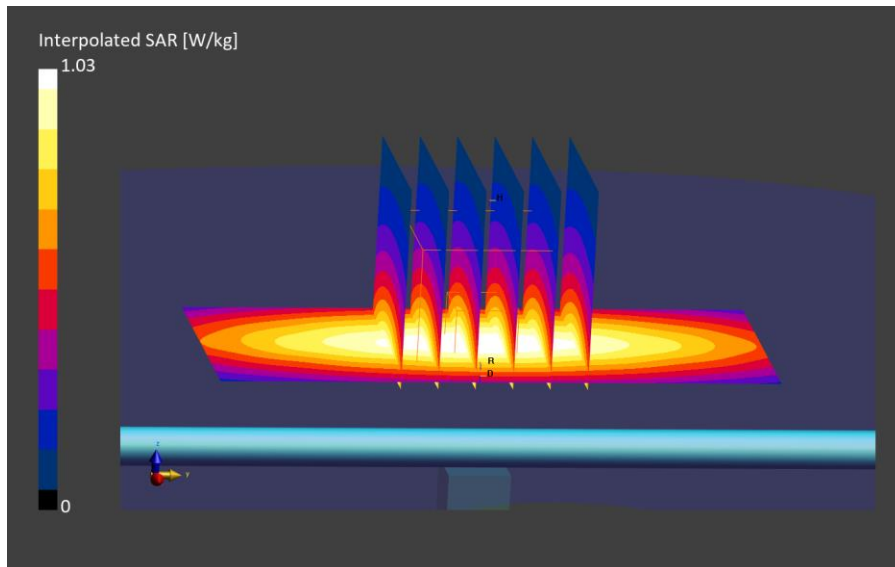
Test Date	Ambient Temp [°C]	TSL Temp [°C]	Measurement SW	Phantom	TSL Type	Cond. [S/m]	Perm.	Probe, Cal. Date	DAE, Cal. Date
2024-02-09	22.4	22.1	16.2.4.2524	Twin-SAM V8.0 – 2159	HSL	0.904	41.8	EX3DV4 – SN7836, 2023-10-11	DAE4ip Sn1839, 2023-10-09

Scans Setup

	Area Scan	Zoom Scan
Grid Extents [mm]	40.0 x 90.0	30.0 x 30.0 x 30.0
Grid Steps [mm]	10.0 x 15.0	6.0 x 6.0 x 1.5
Sensor Surface [mm]	3.0	1.4
Grading Ratio	N/A	1.5

Measurement Results

	SAR [W/kg]	Deviation [%]
psSAR1g	0.899	3.45
psSAR10g	0.589	3.51
Peak SAR (Extrapolated)	1.43	13.49



RF SAFETY LABORATORY

System Verification

Verification Conditions

Verification Source	Power [dBm]	Phantom Section	Test Distance [mm]	Signal, UID	Frequency [MHz]	ConvF (x, y, z)
D835V2 - SN4d311	23.0	Flat	15	CW, 0	835.000	9.24

Test Setup

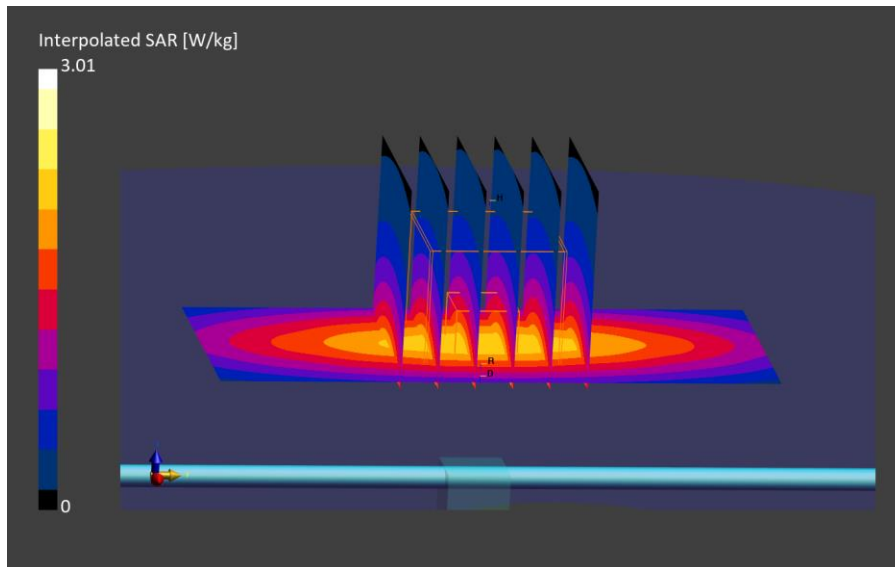
Test Date	Ambient Temp [°C]	TSL Temp [°C]	Measurement SW	Phantom	TSL Type	Cond. [S/m]	Perm.	Probe, Cal. Date	DAE, Cal. Date
2024-01-26	22.5	22.4	16.2.4.2524	Twin-SAM V8.0 - 2159	HSL	0.944	41.9	EX3DV4 - SN7836, 2023-10-11	DAE4ip Sn1839, 2023-10-09

Scans Setup

	Area Scan	Zoom Scan
Grid Extents [mm]	40.0 x 90.0	30.0 x 30.0 x 30.0
Grid Steps [mm]	10.0 x 15.0	6.0 x 6.0 x 1.5
Sensor Surface [mm]	3.0	1.4
Grading Ratio	N/A	1.5

Measurement Results

	SAR [W/kg]	Deviation [%]
psSAR1g	1.91	-2.52
psSAR10g	1.24	-2.44
Peak SAR (Extrapolated)	3.01	6.99



RF SAFETY LABORATORY

System Verification

Verification Conditions

Verification Source	Power [dBm]	Phantom Section	Test Distance [mm]	Signal, UID	Frequency [MHz]	ConvF (x, y, z)
D835V2 - SN4d311	17.0	Flat	15	CW, 0	835.000	9.24

Test Setup

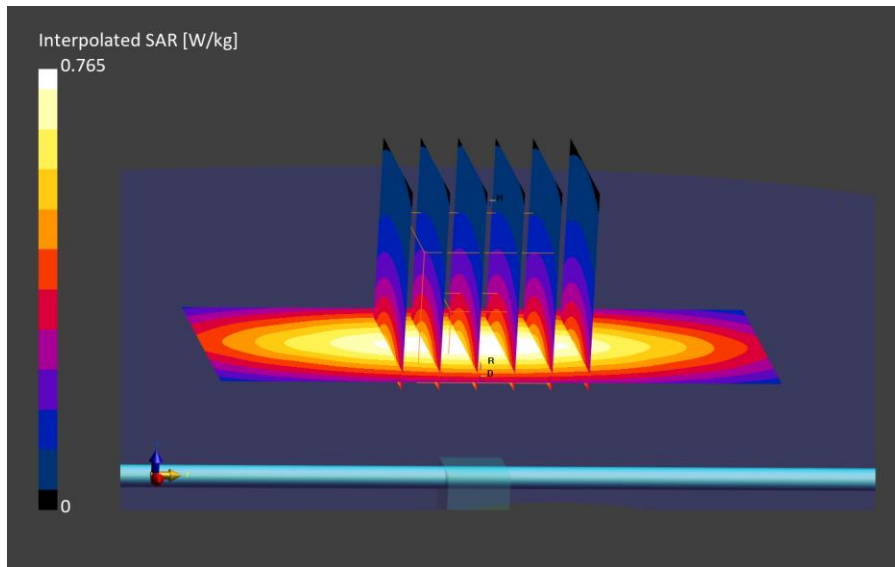
Test Date	Ambient Temp [°C]	TSL Temp [°C]	Measurement SW	Phantom	TSL Type	Cond. [S/m]	Perm.	Probe, Cal. Date	DAE, Cal. Date
2024-02-09	22.2	21.7	16.2.4.2524	Twin-SAM V8.0 - 2165	HSL	0.915	42.8	EX3DV4 - SN7859, 2023-12-19	DAE4ip Sn1844, 2023-11-02

Scans Setup

	Area Scan	Zoom Scan
Grid Extents [mm]	40.0 x 90.0	30.0 x 30.0 x 30.0
Grid Steps [mm]	10.0 x 15.0	6.0 x 6.0 x 1.5
Sensor Surface [mm]	3.0	1.4
Grading Ratio	N/A	1.5

Measurement Results

	SAR [W/kg]	Deviation [%]
psSAR1g	0.502	2
psSAR10g	0.328	2.74
Peak SAR (Extrapolated)	0.765	8.25



RF SAFETY LABORATORY

System Verification

Verification Conditions

Verification Source	Power [dBm]	Phantom Section	Test Distance [mm]	Signal, UID	Frequency [MHz]	ConvF (x, y, z)
D835V2 - SN4d311	17.0	Flat	15	CW, 0	835.000	9.24

Test Setup

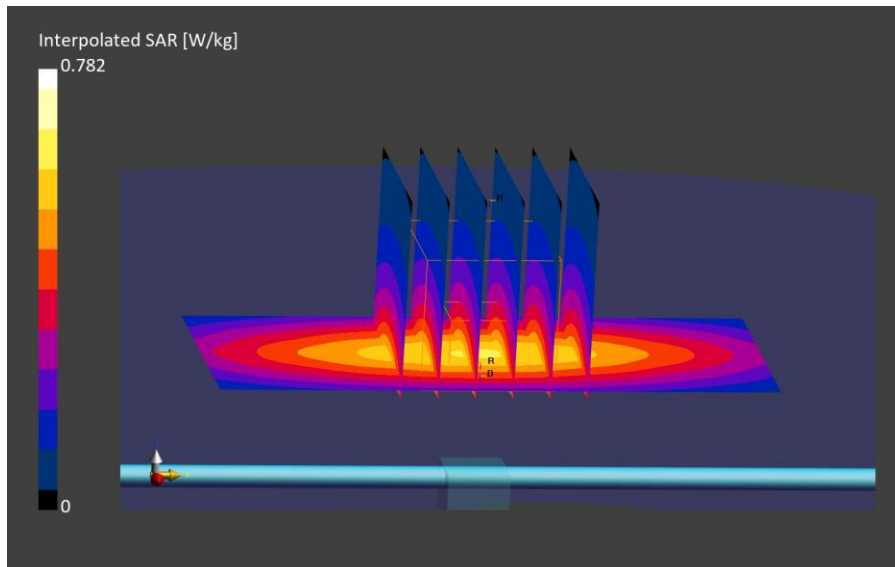
Test Date	Ambient Temp [°C]	TSL Temp [°C]	Measurement SW	Phantom	TSL Type	Cond. [S/m]	Perm.	Probe, Cal. Date	DAE, Cal. Date
2024-02-12	21.6	21.5	16.2.4.2524	Twinn-SAM V8.0 - 2165	HSL	0.938	43.4	EX3DV4 - SN7859, 2023-12-19	DAE4ip Sn1844, 2023-11-02

Scans Setup

	Area Scan	Zoom Scan
Grid Extents [mm]	40.0 x 90.0	30.0 x 30.0 x 30.0
Grid Steps [mm]	10.0 x 15.0	6.0 x 6.0 x 1.5
Sensor Surface [mm]	3.0	1.4
Grading Ratio	N/A	1.5

Measurement Results

	SAR [W/kg]	Deviation [%]
psSAR1g	0.510	3.62
psSAR10g	0.334	4.62
Peak SAR (Extrapolated)	0.782	10.66



RF SAFETY LABORATORY

System Verification

Verification Conditions

Verification Source	Power [dBm]	Phantom Section	Test Distance [mm]	Signal, UID	Frequency [MHz]	ConvF (x, y, z)
D1750V2 – SN1205	17.0	Flat	10	CW, 0	1750.000	8.34

Test Setup

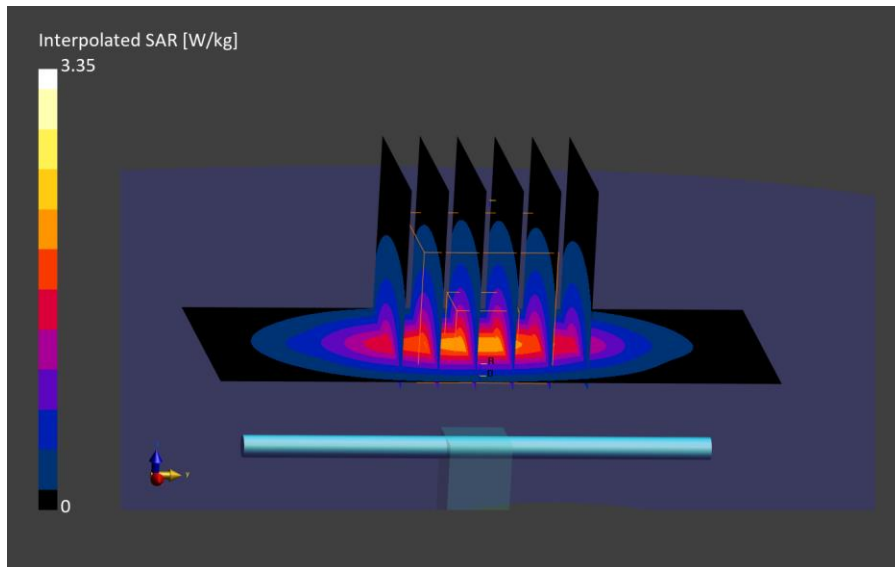
Test Date	Ambient Temp [°C]	TSL Temp [°C]	Measurement SW	Phantom	TSL Type	Cond. [S/m]	Perm.	Probe, Cal. Date	DAE, Cal. Date
2024-01-30	22.1	20.4	16.2.4.2524	Twin-SAM V8.0 – 2165	HSL	1.39	40.2	EX3DV4 – SN7859, 2023-12-19	DAE4ip Sn1844, 2023-11-02

Scans Setup

	Area Scan	Zoom Scan
Grid Extents [mm]	40.0 x 90.0	30.0 x 30.0 x 30.0
Grid Steps [mm]	10.0 x 15.0	6.0 x 6.0 x 1.5
Sensor Surface [mm]	3.0	1.4
Grading Ratio	N/A	1.5

Measurement Results

	SAR [W/kg]	Deviation [%]
psSAR1g	1.77	-3.24
psSAR10g	0.942	-2.11
Peak SAR (Extrapolated)	3.35	2.99



RF SAFETY LABORATORY

System Verification

Verification Conditions

Verification Source	Power [dBm]	Phantom Section	Test Distance [mm]	Signal, UID	Frequency [MHz]	ConvF (x, y, z)
D1750V2 – SN1205	17.0	Flat	10	CW, 0	1750.000	8.34

Test Setup

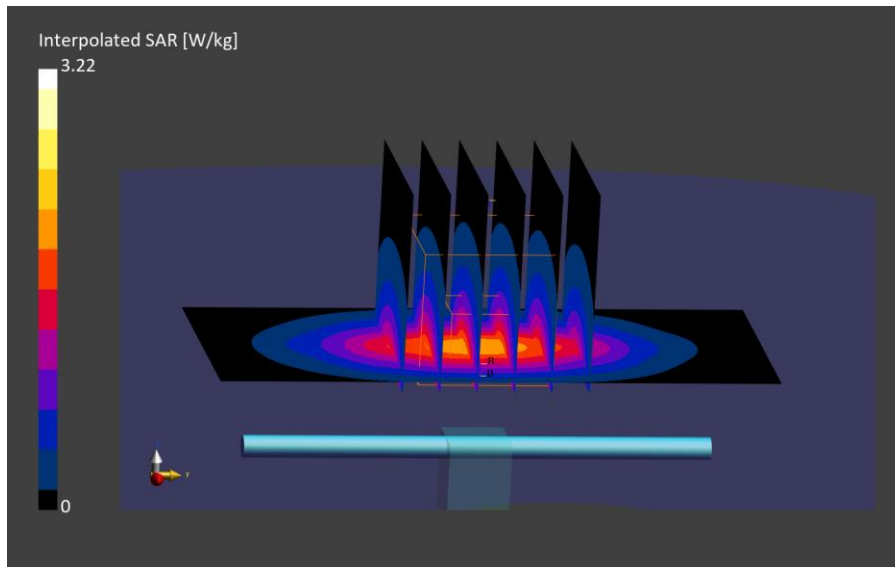
Test Date	Ambient Temp [°C]	TSL Temp [°C]	Measurement SW	Phantom	TSL Type	Cond. [S/m]	Perm.	Probe, Cal. Date	DAE, Cal. Date
2024-02-08	22.6	21.4	16.2.4.2524	Twin-SAM V8.0 – 2165	HSL	1.37	40.8	EX3DV4 – SN7859, 2023-12-19	DAE4ip Sn1844, 2023-11-02

Scans Setup

	Area Scan	Zoom Scan
Grid Extents [mm]	40.0 x 90.0	30.0 x 30.0 x 30.0
Grid Steps [mm]	10.0 x 15.0	6.0 x 6.0 x 1.5
Sensor Surface [mm]	3.0	1.4
Grading Ratio	N/A	1.5

Measurement Results

	SAR [W/kg]	Deviation [%]
psSAR1g	1.73	-5.43
psSAR10g	0.919	-4.5
Peak SAR (Extrapolated)	3.22	-1.01



RF SAFETY LABORATORY

System Verification

Verification Conditions

Verification Source	Power [dBm]	Phantom Section	Test Distance [mm]	Signal, UID	Frequency [MHz]	ConvF (x, y, z)
D1750V2 - SN1205	17.0	Flat	10	CW, 0	1750.000	8.34

Test Setup

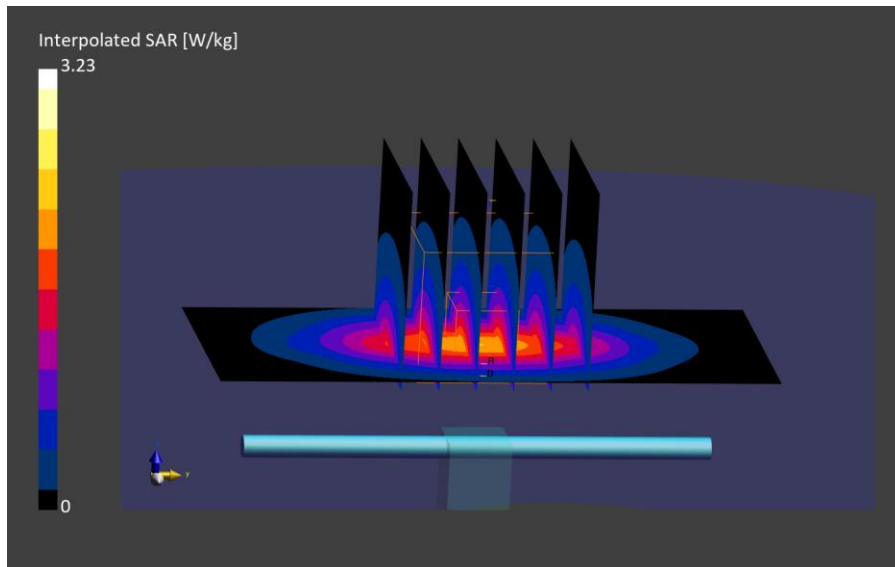
Test Date	Ambient Temp [°C]	TSL Temp [°C]	Measurement SW	Phantom	TSL Type	Cond. [S/m]	Perm.	Probe, Cal. Date	DAE, Cal. Date
2024-02-12	21.6	21.5	16.2.4.2524	Twin-SAM V8.0 - 2165	HSL	1.38	41.3	EX3DV4 - SN7859, 2023-12-19	DAE4ip Sn1844, 2023-11-02

Scans Setup

	Area Scan	Zoom Scan
Grid Extents [mm]	40.0 x 90.0	30.0 x 30.0 x 30.0
Grid Steps [mm]	10.0 x 15.0	6.0 x 6.0 x 1.5
Sensor Surface [mm]	3.0	1.4
Grading Ratio	N/A	1.5

Measurement Results

	SAR [W/kg]	Deviation [%]
psSAR1g	1.73	-5.43
psSAR10g	0.927	-3.67
Peak SAR (Extrapolated)	3.23	-0.7



RF SAFETY LABORATORY

System Verification

Verification Conditions

Verification Source	Power [dBm]	Phantom Section	Test Distance [mm]	Signal, UID	Frequency [MHz]	ConvF (x, y, z)
D1900V2 - SN5d252	17.0	Flat	10	CW, 0	1900.000	8.26

Test Setup

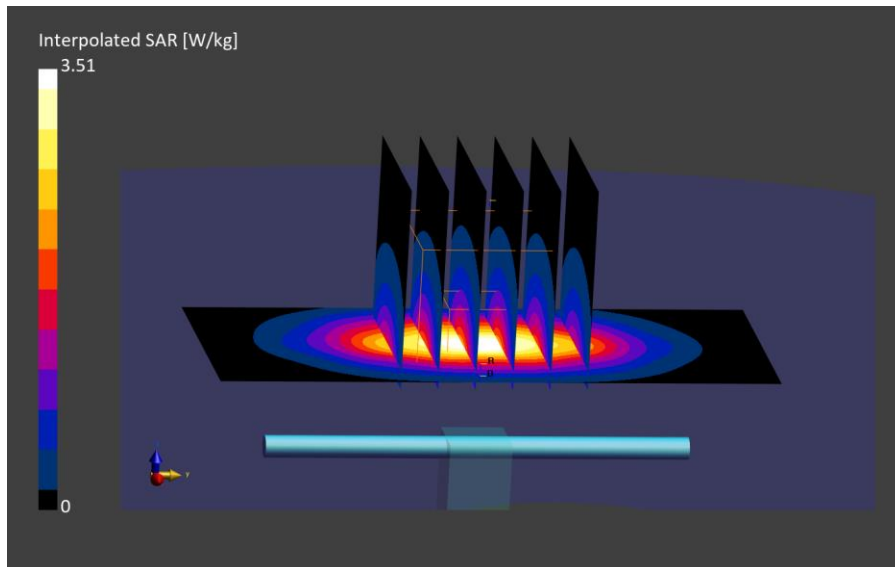
Test Date	Ambient Temp [°C]	TSL Temp [°C]	Measurement SW	Phantom	TSL Type	Cond. [S/m]	Perm.	Probe, Cal. Date	DAE, Cal. Date
2024-02-02	22.9	22	16.2.4.2524	Twin-SAM V8.0 - 2159	HSL	1.43	40.0	EX3DV4 - SN7836, 2023-10-11	DAE4ip Sn1839, 2023-10-09

Scans Setup

	Area Scan	Zoom Scan
Grid Extents [mm]	40.0 x 90.0	30.0 x 30.0 x 30.0
Grid Steps [mm]	10.0 x 15.0	6.0 x 6.0 x 1.5
Sensor Surface [mm]	3.0	1.4
Grading Ratio	N/A	1.5

Measurement Results

	SAR [W/kg]	Deviation [%]
psSAR1g	1.83	-8.26
psSAR10g	0.949	-9.83
Peak SAR (Extrapolated)	3.51	-2.87



RF SAFETY LABORATORY

System Verification

Verification Conditions

Verification Source	Power [dBm]	Phantom Section	Test Distance [mm]	Signal, UID	Frequency [MHz]	ConvF (x, y, z)
D1900V2 - SN5d252	20.0	Flat	10	CW, 0	1900.000	8.26

Test Setup

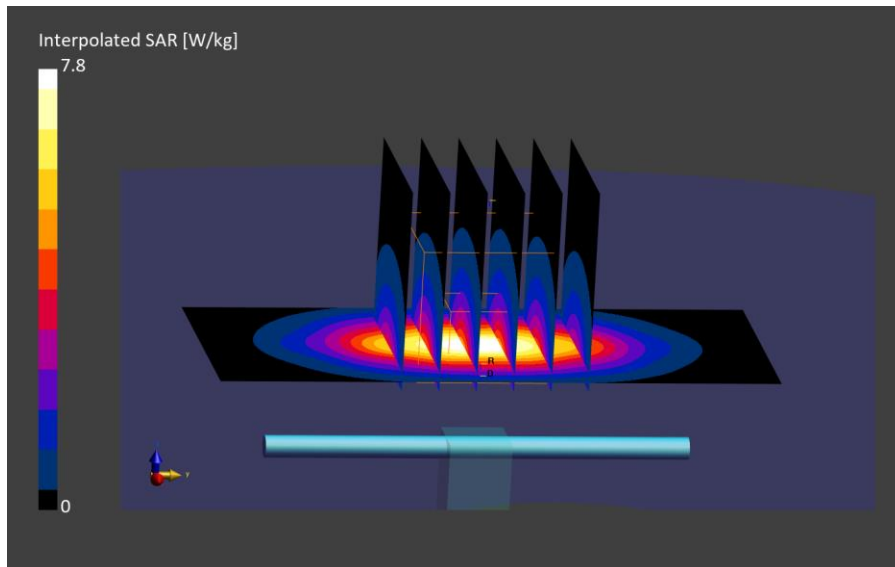
Test Date	Ambient Temp [°C]	TSL Temp [°C]	Measurement SW	Phantom	TSL Type	Cond. [S/m]	Perm.	Probe, Cal. Date	DAE, Cal. Date
2024-02-09	22.4	22.1	16.2.4.2524	Twin-SAM V8.0 - 2159	HSL	1.45	39.4	EX3DV4 - SN7836, 2023-10-11	DAE4ip Sn1839, 2023-10-09

Scans Setup

	Area Scan	Zoom Scan
Grid Extents [mm]	40.0 x 90.0	30.0 x 30.0 x 30.0
Grid Steps [mm]	10.0 x 15.0	6.0 x 6.0 x 1.5
Sensor Surface [mm]	3.0	1.4
Grading Ratio	N/A	1.5

Measurement Results

	SAR [W/kg]	Deviation [%]
psSAR1g	4.05	1.76
psSAR10g	2.10	0
Peak SAR (Extrapolated)	7.80	8.18



RF SAFETY LABORATORY

System Verification

Verification Conditions

Verification Source	Power [dBm]	Phantom Section	Test Distance [mm]	Signal, UID	Frequency [MHz]	ConvF (x, y, z)
D2300V2 - SN1139	17.0	Flat	10	CW, 0	2300.000	7.65

Test Setup

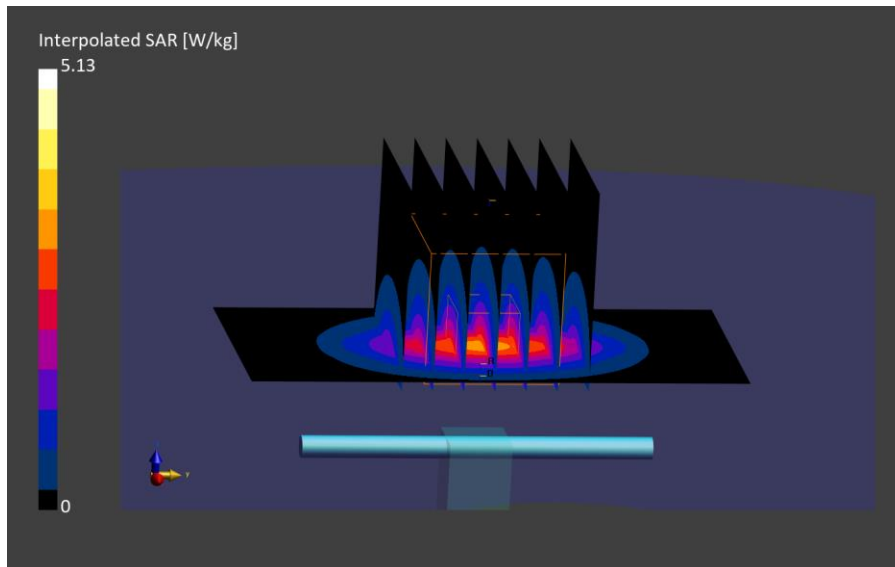
Test Date	Ambient Temp [°C]	TSL Temp [°C]	Measurement SW	Phantom	TSL Type	Cond. [S/m]	Perm.	Probe, Cal. Date	DAE, Cal. Date
2024-01-31	21.2	19.2	16.2.4.2524	Twinn-SAM V8.0 - 2165	HSL	1.73	39.1	EX3DV4 - SN7859, 2023-12-19	DAE4ip Sn1844, 2023-11-02

Scans Setup

	Area Scan	Zoom Scan
Grid Extents [mm]	40.0 x 80.0	30.0 x 30.0 x 30.0
Grid Steps [mm]	10.0 x 10.0	5.0 x 5.0 x 1.5
Sensor Surface [mm]	3.0	1.4
Grading Ratio	N/A	1.5

Measurement Results

	SAR [W/kg]	Deviation [%]
psSAR1g	2.45	-0.24
psSAR10g	1.17	-1.5
Peak SAR (Extrapolated)	5.13	10.3



RF SAFETY LABORATORY

System Verification

Verification Conditions

Verification Source	Power [dBm]	Phantom Section	Test Distance [mm]	Signal, UID	Frequency [MHz]	ConvF (x, y, z)
D2300V2 - SN1139	17.0	Flat	10	CW, 0	2300.000	7.46

Test Setup

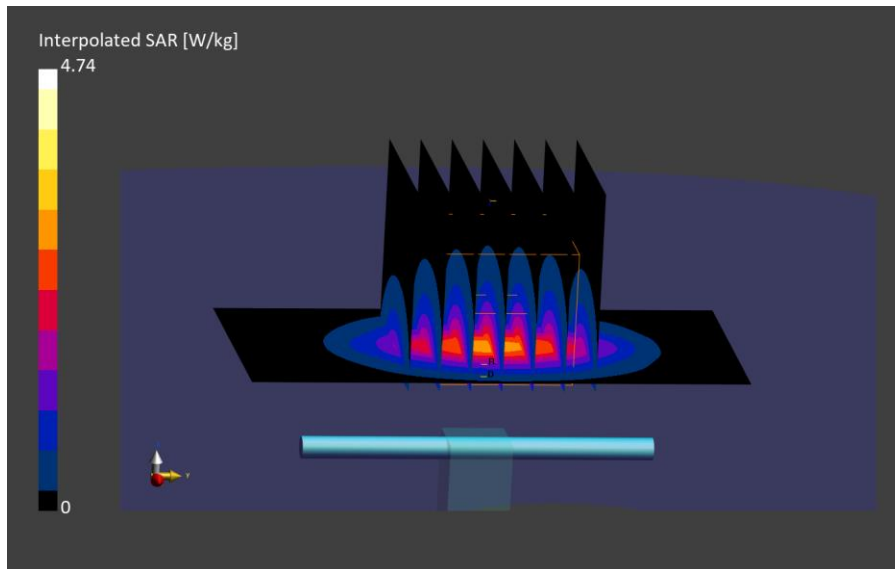
Test Date	Ambient Temp [°C]	TSL Temp [°C]	Measurement SW	Phantom	TSL Type	Cond. [S/m]	Perm.	Probe, Cal. Date	DAE, Cal. Date
2024-02-07	21.9	20.3	16.2.4.2524	Twinn-SAM V8.0 - 2164	HSL	1.74	40.5	EX3DV4 - SN7857, 2023-12-19	DAE4ip Sn1843, 2023-11-02

Scans Setup

	Area Scan	Zoom Scan
Grid Extents [mm]	40.0 x 80.0	30.0 x 30.0 x 30.0
Grid Steps [mm]	10.0 x 10.0	5.0 x 5.0 x 1.5
Sensor Surface [mm]	3.0	1.4
Grading Ratio	N/A	1.5

Measurement Results

	SAR [W/kg]	Deviation [%]
psSAR1g	2.30	-6.34
psSAR10g	1.10	-7.39
Peak SAR (Extrapolated)	4.74	1.91



RF SAFETY LABORATORY

System Verification

Verification Conditions

Verification Source	Power [dBm]	Phantom Section	Test Distance [mm]	Signal, UID	Frequency [MHz]	ConvF (x, y, z)
D2450V2 - SN1112	17.0	Flat	10	CW, 0	2450.000	7.09

Test Setup

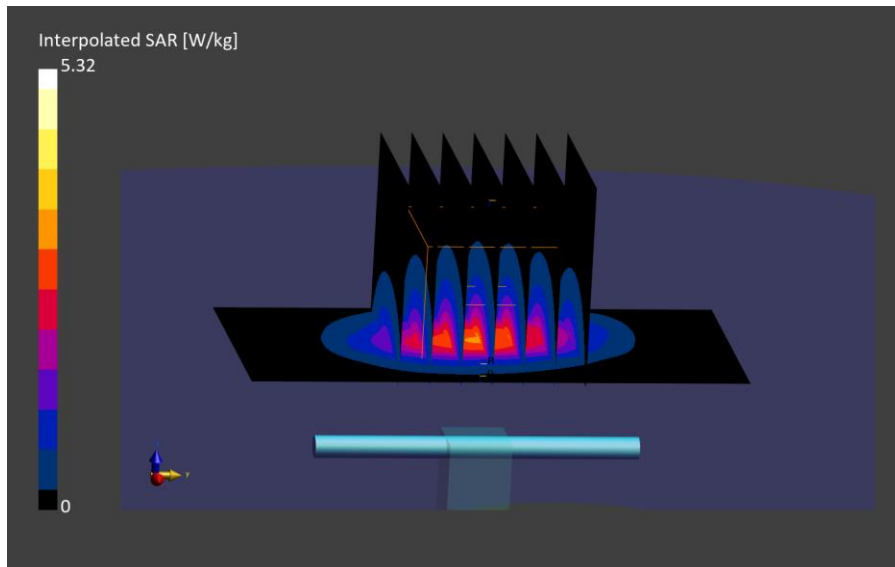
Test Date	Ambient Temp [°C]	TSL Temp [°C]	Measurement SW	Phantom	TSL Type	Cond. [S/m]	Perm.	Probe, Cal. Date	DAE, Cal. Date
2024-01-24	22.1	20.1	16.2.4.2524	Twinn-SAM V8.0 - 2165	HSL	1.88	39.9	EX3DV4 - SN7853, 2023-11-14	DAE4ip Sn1844, 2023-11-02

Scans Setup

	Area Scan	Zoom Scan
Grid Extents [mm]	40.0 x 80.0	30.0 x 30.0 x 30.0
Grid Steps [mm]	10.0 x 10.0	5.0 x 5.0 x 1.5
Sensor Surface [mm]	3.0	1.4
Grading Ratio	N/A	1.5

Measurement Results

	SAR [W/kg]	Deviation [%]
psSAR1g	2.57	-1.01
psSAR10g	1.20	-1.87
Peak SAR (Extrapolated)	5.32	1.87



RF SAFETY LABORATORY

System Verification

Verification Conditions

Verification Source	Power [dBm]	Phantom Section	Test Distance [mm]	Signal, UID	Frequency [MHz]	ConvF (x, y, z)
D2600V2 – SN1215	17.0	Flat	10	CW, 0	2600.000	7.26

Test Setup

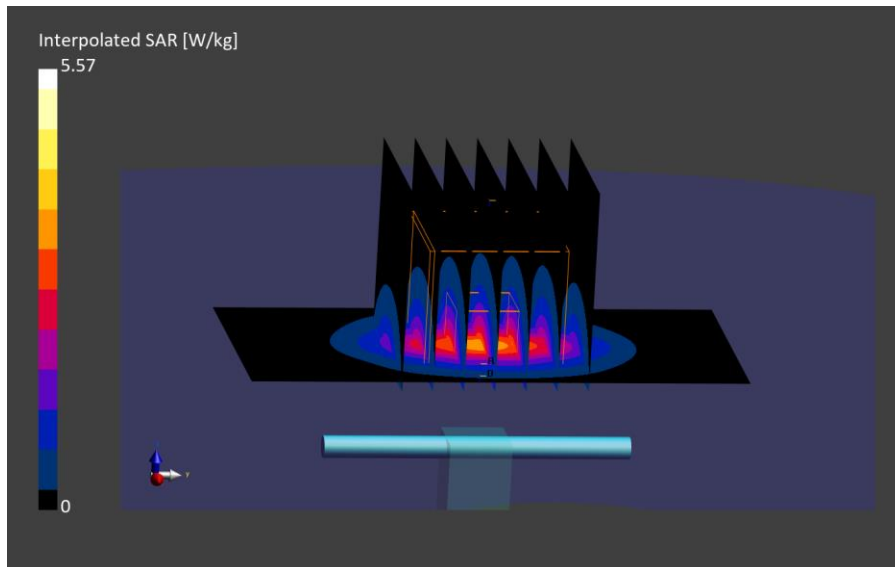
Test Date	Ambient Temp [°C]	TSL Temp [°C]	Measurement SW	Phantom	TSL Type	Cond. [S/m]	Perm.	Probe, Cal. Date	DAE, Cal. Date
2024-01-29	22.7	21.6	16.2.4.2524	Twinn-SAM V8.0 – 2159	HSL	1.91	38.1	EX3DV4 – SN7836, 2023-10-11	DAE4ip Sn1839, 2023-10-09

Scans Setup

	Area Scan	Zoom Scan
Grid Extents [mm]	40.0 x 80.0	30.0 x 30.0 x 30.0
Grid Steps [mm]	10.0 x 10.0	5.0 x 5.0 x 1.5
Sensor Surface [mm]	3.0	1.4
Grading Ratio	N/A	1.5

Measurement Results

	SAR [W/kg]	Deviation [%]
psSAR1g	2.63	-8.26
psSAR10g	1.18	-8.74
Peak SAR (Extrapolated)	5.57	-5.9



RF SAFETY LABORATORY

System Verification

Verification Conditions

Verification Source	Power [dBm]	Phantom Section	Test Distance [mm]	Signal, UID	Frequency [MHz]	ConvF (x, y, z)
D2600V2 – SN1215	17.0	Flat	10	CW, 0	2600.000	7.26

Test Setup

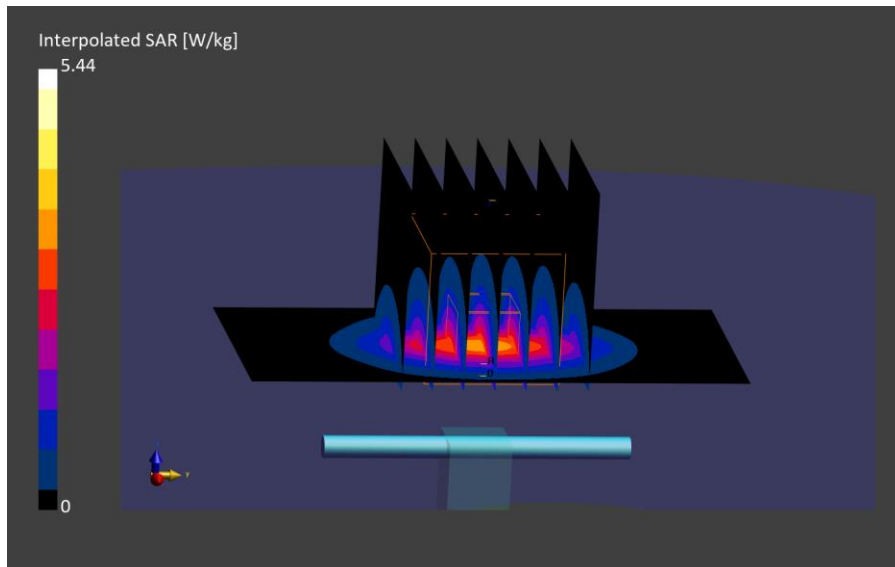
Test Date	Ambient Temp [°C]	TSL Temp [°C]	Measurement SW	Phantom	TSL Type	Cond. [S/m]	Perm.	Probe, Cal. Date	DAE, Cal. Date
2024-01-31	21.3	20.5	16.2.4.2524	Twinn-SAM V8.0 – 2159	HSL	1.95	39.3	EX3DV4 – SN7836, 2023-10-11	DAE4ip Sn1839, 2023-10-09

Scans Setup

	Area Scan	Zoom Scan
Grid Extents [mm]	40.0 x 80.0	30.0 x 30.0 x 30.0
Grid Steps [mm]	10.0 x 10.0	5.0 x 5.0 x 1.5
Sensor Surface [mm]	3.0	1.4
Grading Ratio	N/A	1.5

Measurement Results

	SAR [W/kg]	Deviation [%]
psSAR1g	2.60	-9.31
psSAR10g	1.17	-9.52
Peak SAR (Extrapolated)	5.44	-8.09



RF SAFETY LABORATORY

System Verification

Verification Conditions

Verification Source	Power [dBm]	Phantom Section	Test Distance [mm]	Signal, UID	Frequency [MHz]	ConvF (x, y, z)
D2600V2 – SN1215	17.0	Flat	10	CW, 0	2600.000	7.26

Test Setup

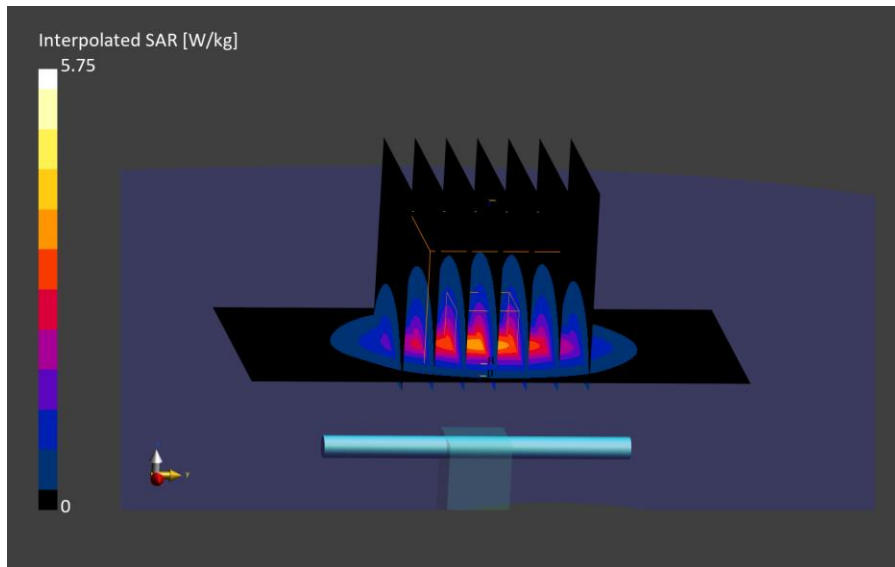
Test Date	Ambient Temp [°C]	TSL Temp [°C]	Measurement SW	Phantom	TSL Type	Cond. [S/m]	Perm.	Probe, Cal. Date	DAE, Cal. Date
2024-02-14	23.1	21.8	16.2.4.2524	Twinn-SAM V8.0 – 2159	HSL	1.96	40.0	EX3DV4 – SN7836, 2023-10-11	DAE4ip Sn1839, 2023-10-09

Scans Setup

	Area Scan	Zoom Scan
Grid Extents [mm]	40.0 x 80.0	30.0 x 30.0 x 30.0
Grid Steps [mm]	10.0 x 10.0	5.0 x 5.0 x 1.5
Sensor Surface [mm]	3.0	1.4
Grading Ratio	N/A	1.5

Measurement Results

	SAR [W/kg]	Deviation [%]
psSAR1g	2.73	-4.77
psSAR10g	1.23	-4.88
Peak SAR (Extrapolated)	5.75	-2.86



RF SAFETY LABORATORY

System Verification

Verification Conditions

Verification Source	Power [dBm]	Phantom Section	Test Distance [mm]	Signal, UID	Frequency [MHz]	ConvF (x, y, z)
D3500V2 - SN1154	17.0	Flat	10	CW, 0	3500.000	6.57

Test Setup

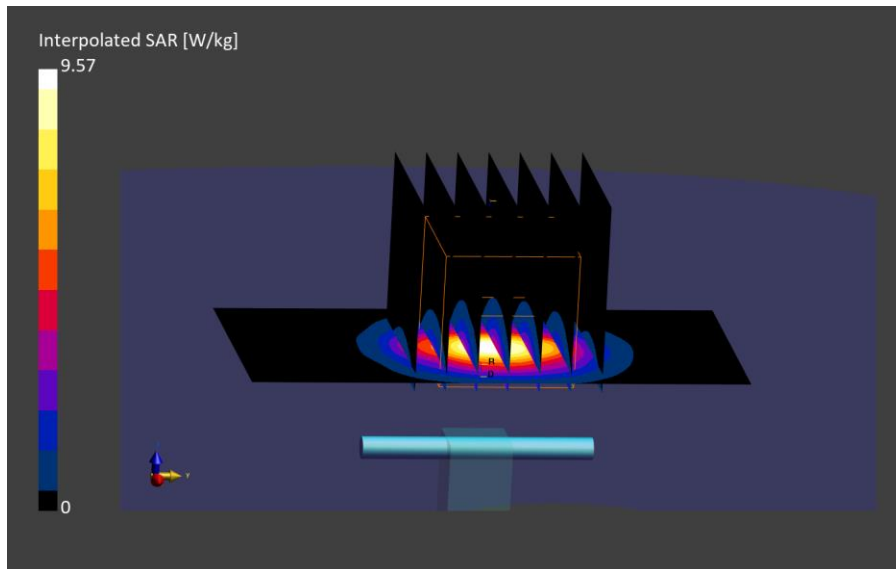
Test Date	Ambient Temp [°C]	TSL Temp [°C]	Measurement SW	Phantom	TSL Type	Cond. [S/m]	Perm.	Probe, Cal. Date	DAE, Cal. Date
2024-01-24	22.2	19.7	16.2.4.2524	Twinn-SAM V8.0 - 2164	HSL	3.02	35.1	EX3DV4 - SN7857, 2023-12-19	DAE4ip Sn1843, 2023-11-02

Scans Setup

	Area Scan	Zoom Scan
Grid Extents [mm]	40.0 x 80.0	28.0 x 28.0 x 28.0
Grid Steps [mm]	10.0 x 10.0	5.0 x 5.0 x 1.4
Sensor Surface [mm]	3.0	1.4
Grading Ratio	N/A	1.5

Measurement Results

	SAR [W/kg]	Deviation [%]
psSAR1g	3.19	-2.23
psSAR10g	1.16	-5.91
Peak SAR (Extrapolated)	9.57	13.05



RF SAFETY LABORATORY

System Verification

Verification Conditions

Verification Source	Power [dBm]	Phantom Section	Test Distance [mm]	Signal, UID	Frequency [MHz]	ConvF (x, y, z)
D3500V2 – SN1154	17.0	Flat	10	CW, 0	3500.000	6.57

Test Setup

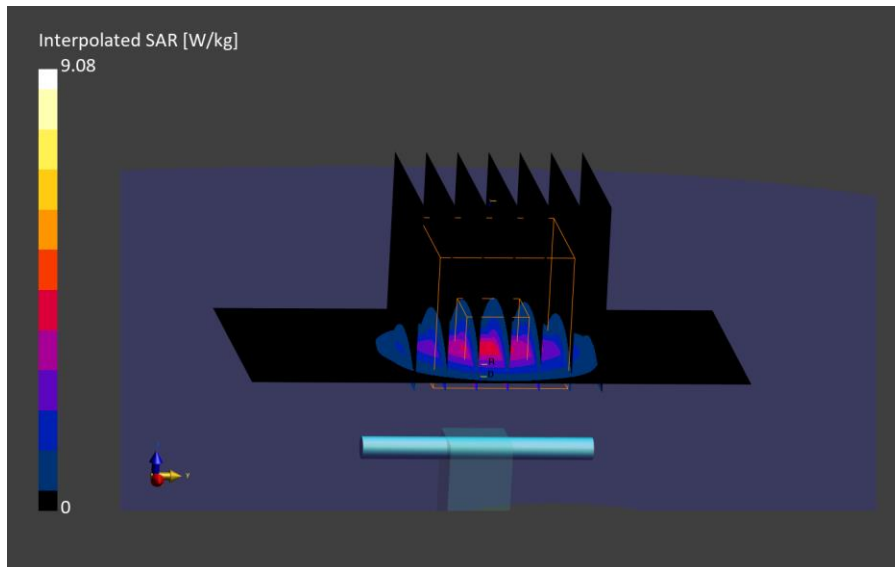
Test Date	Ambient Temp [°C]	TSL Temp [°C]	Measurement SW	Phantom	TSL Type	Cond. [S/m]	Perm.	Probe, Cal. Date	DAE, Cal. Date
2024-01-26	23.5	21.1	16.2.4.2524	Twin-SAM V8.0 – 2164	HSL	3.06	35.5	EX3DV4 – SN7857, 2023-12-19	DAE4ip Sn1843, 2023-11-02

Scans Setup

	Area Scan	Zoom Scan
Grid Extents [mm]	40.0 x 80.0	28.0 x 28.0 x 28.0
Grid Steps [mm]	10.0 x 10.0	5.0 x 5.0 x 1.4
Sensor Surface [mm]	3.0	1.4
Grading Ratio	N/A	1.5

Measurement Results

	SAR [W/kg]	Deviation [%]
psSAR1g	3.03	-7.13
psSAR10g	1.12	-9.16
Peak SAR (Extrapolated)	9.08	7.26



RF SAFETY LABORATORY

System Verification

Verification Conditions

Verification Source	Power [dBm]	Phantom Section	Test Distance [mm]	Signal, UID	Frequency [MHz]	ConvF (x, y, z)
D3500V2 - SN1154	17.0	Flat	10	CW, 0	3500.000	6.57

Test Setup

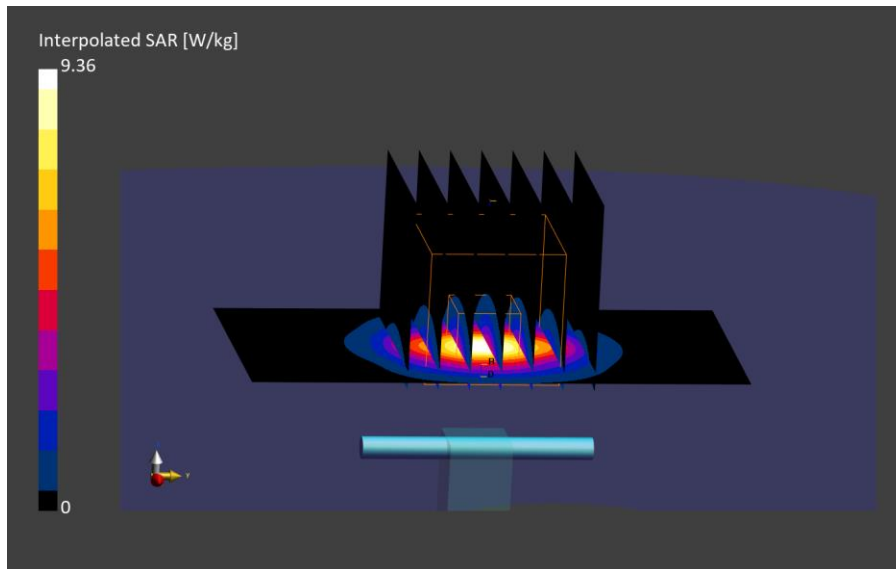
Test Date	Ambient Temp [°C]	TSL Temp [°C]	Measurement SW	Phantom	TSL Type	Cond. [S/m]	Perm.	Probe, Cal. Date	DAE, Cal. Date
2024-01-29	22.9	21.9	16.2.4.2524	Twinn-SAM V8.0 - 2164	HSL	3.06	36.1	EX3DV4 - SN7857, 2023-12-19	DAE4ip Sn1843, 2023-11-02

Scans Setup

	Area Scan	Zoom Scan
Grid Extents [mm]	40.0 x 80.0	28.0 x 28.0 x 28.0
Grid Steps [mm]	10.0 x 10.0	5.0 x 5.0 x 1.4
Sensor Surface [mm]	3.0	1.4
Grading Ratio	N/A	1.5

Measurement Results

	SAR [W/kg]	Deviation [%]
psSAR1g	3.18	-2.54
psSAR10g	1.17	-5.1
Peak SAR (Extrapolated)	9.36	10.57



RF SAFETY LABORATORY

System Verification

Verification Conditions

Verification Source	Power [dBm]	Phantom Section	Test Distance [mm]	Signal, UID	Frequency [MHz]	ConvF (x, y, z)
D3700V2 - SN1130	17.0	Flat	10	CW, 0	3700.000	6.54

Test Setup

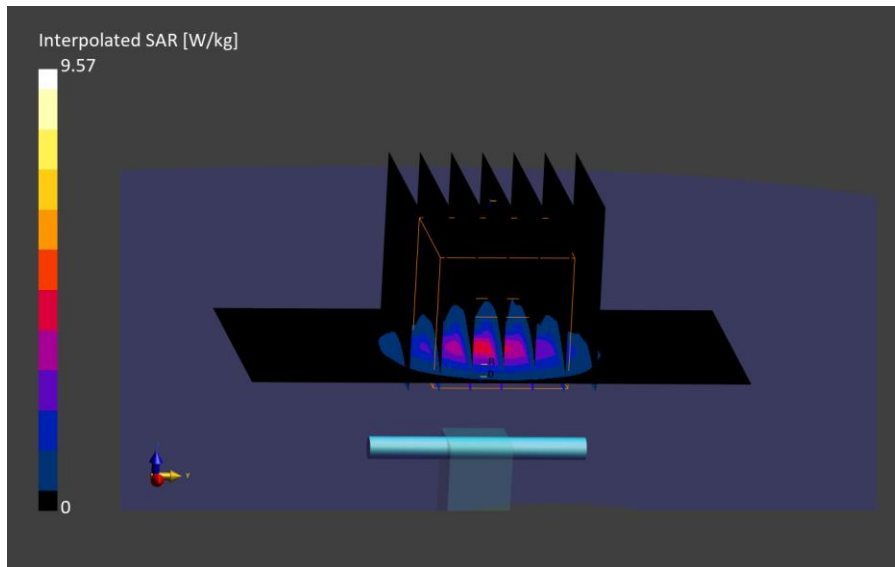
Test Date	Ambient Temp [°C]	TSL Temp [°C]	Measurement SW	Phantom	TSL Type	Cond. [S/m]	Perm.	Probe, Cal. Date	DAE, Cal. Date
2024-01-24	22.2	19.7	16.2.4.2524	Twinn-SAM V8.0 - 2164	HSL	3.25	34.5	EX3DV4 - SN7857, 2023-12-19	DAE4ip Sn1843, 2023-11-02

Scans Setup

	Area Scan	Zoom Scan
Grid Extents [mm]	40.0 x 80.0	28.0 x 28.0 x 28.0
Grid Steps [mm]	10.0 x 10.0	5.0 x 5.0 x 1.4
Sensor Surface [mm]	3.0	1.4
Grading Ratio	N/A	1.5

Measurement Results

	SAR [W/kg]	Deviation [%]
psSAR1g	3.14	-5.93
psSAR10g	1.13	-7.97
Peak SAR (Extrapolated)	9.57	8.68



RF SAFETY LABORATORY

System Verification

Verification Conditions

Verification Source	Power [dBm]	Phantom Section	Test Distance [mm]	Signal, UID	Frequency [MHz]	ConvF (x, y, z)
D3700V2 - SN1130	17.0	Flat	10	CW, 0	3700.000	6.54

Test Setup

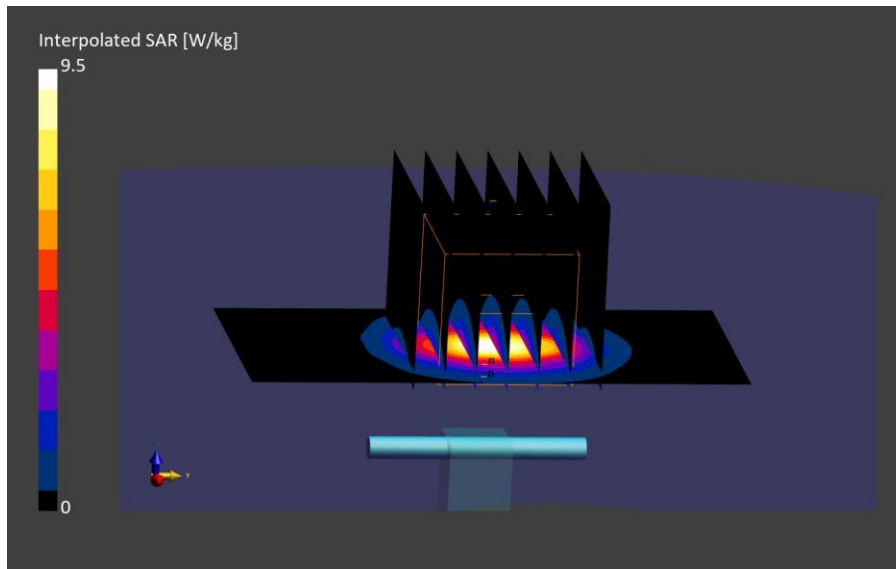
Test Date	Ambient Temp [°C]	TSL Temp [°C]	Measurement SW	Phantom	TSL Type	Cond. [S/m]	Perm.	Probe, Cal. Date	DAE, Cal. Date
2024-01-26	23.5	21.1	16.2.4.2524	Twinn-SAM V8.0 - 2164	HSL	3.29	34.8	EX3DV4 - SN7857, 2023-12-19	DAE4ip Sn1843, 2023-11-02

Scans Setup

	Area Scan	Zoom Scan
Grid Extents [mm]	40.0 x 80.0	28.0 x 28.0 x 28.0
Grid Steps [mm]	10.0 x 10.0	5.0 x 5.0 x 1.4
Sensor Surface [mm]	3.0	1.4
Grading Ratio	N/A	1.5

Measurement Results

	SAR [W/kg]	Deviation [%]
psSAR1g	3.13	-6.23
psSAR10g	1.13	-7.97
Peak SAR (Extrapolated)	9.50	7.88



RF SAFETY LABORATORY

System Verification

Verification Conditions

Verification Source	Power [dBm]	Phantom Section	Test Distance [mm]	Signal, UID	Frequency [MHz]	ConvF (x, y, z)
D3700V2 - SN1130	17.0	Flat	10	CW, 0	3700.000	6.54

Test Setup

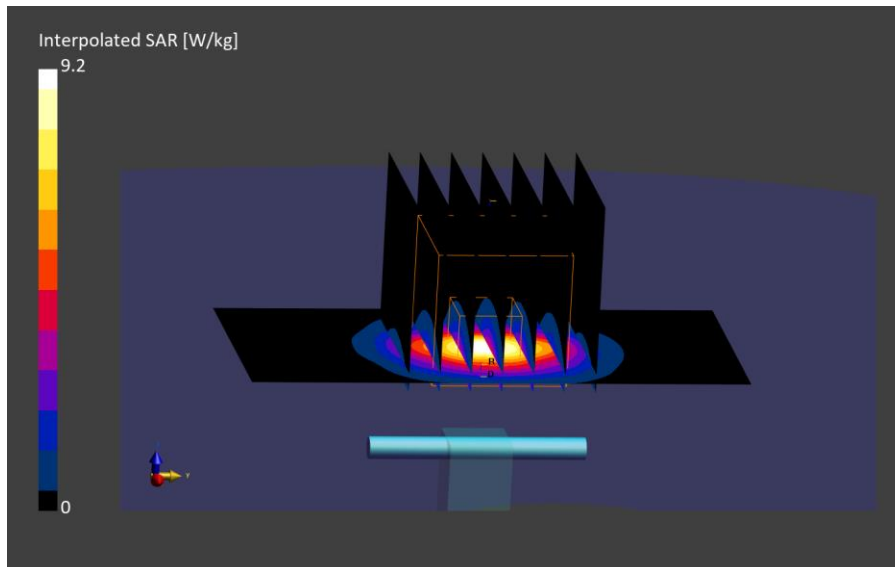
Test Date	Ambient Temp [°C]	TSL Temp [°C]	Measurement SW	Phantom	TSL Type	Cond. [S/m]	Perm.	Probe, Cal. Date	DAE, Cal. Date
2024-01-29	22.9	21.9	16.2.4.2524	Twinn-SAM V8.0 - 2164	HSL	3.29	35.4	EX3DV4 - SN7857, 2023-12-19	DAE4ip Sn1843, 2023-11-02

Scans Setup

	Area Scan	Zoom Scan
Grid Extents [mm]	40.0 x 80.0	28.0 x 28.0 x 28.0
Grid Steps [mm]	10.0 x 10.0	5.0 x 5.0 x 1.4
Sensor Surface [mm]	3.0	1.4
Grading Ratio	N/A	1.5

Measurement Results

	SAR [W/kg]	Deviation [%]
psSAR1g	3.08	-7.73
psSAR10g	1.11	-9.6
Peak SAR (Extrapolated)	9.20	4.48



SAFETY LABORATORY

System Verification

Verification Conditions

Verification Source	Power [dBm]	Phantom Section	Test Distance [mm]	Signal, UID	Frequency [MHz]	ConvF (x, y, z)
D3700V2 - SN1130	17.0	Flat	10	CW, 0	3700.000	6.66

Test Setup

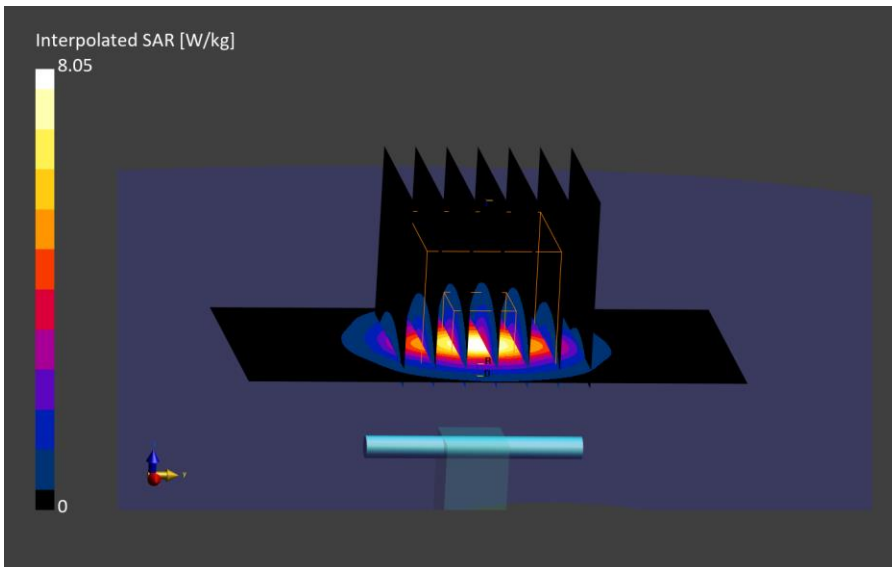
Test Date	Ambient Temp [°C]	TSL Temp [°C]	Measurement SW	Phantom	TSL Type	Cond. [S/m]	Perm.	Probe, Cal. Date	DAE, Cal. Date
2024-02-14	23.1	21.8	16.2.4.2524	Twinn-SAM V8.0 - 2159	HSL	2.89	38.0	EX3DV4 - SN7836, 2023-10-11	DAE4ip Sn1839, 2023-10-09

Scans Setup

	Area Scan	Zoom Scan
Grid Extents [mm]	40.0 x 80.0	28.0 x 28.0 x 28.0
Grid Steps [mm]	10.0 x 10.0	5.0 x 5.0 x 1.4
Sensor Surface [mm]	3.0	1.4
Grading Ratio	N/A	1.5

Measurement Results

	SAR [W/kg]	Deviation [%]
psSAR1g	3.09	-7.43
psSAR10g	1.15	-6.34
Peak SAR (Extrapolated)	8.05	-8.58



RF SAFETY LABORATORY

System Verification

Verification Conditions

Verification Source	Power [dBm]	Phantom Section	Test Distance [mm]	Signal, UID	Frequency [MHz]	ConvF (x, y, z)
D3900V2 - SN1101	17.0	Flat	10	CW, 0	3900.000	6.15

Test Setup

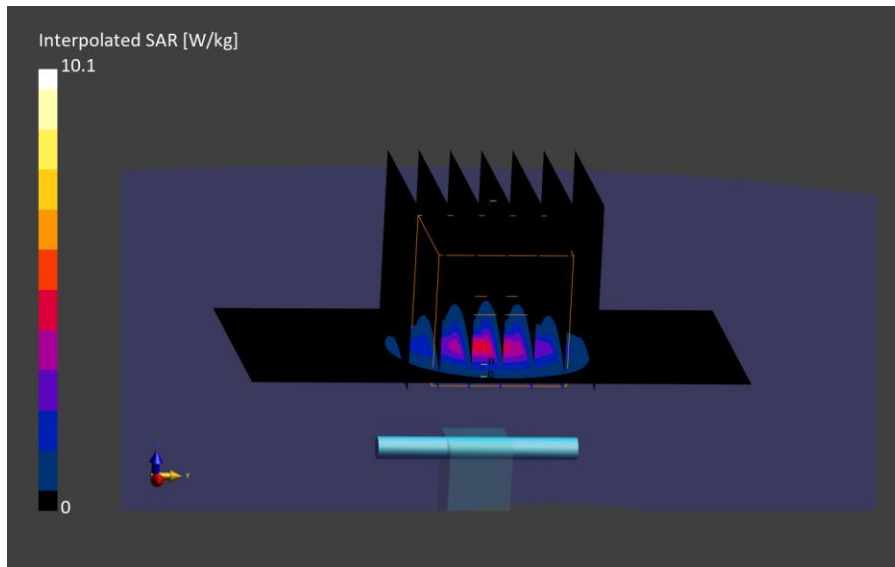
Test Date	Ambient Temp [°C]	TSL Temp [°C]	Measurement SW	Phantom	TSL Type	Cond. [S/m]	Perm.	Probe, Cal. Date	DAE, Cal. Date
2024-01-29	22.9	21.9	16.2.4.2524	Twinn-SAM V8.0 - 2164	HSL	3.52	34.8	EX3DV4 - SN7857, 2023-12-19	DAE4ip Sn1843, 2023-11-02

Scans Setup

	Area Scan	Zoom Scan
Grid Extents [mm]	40.0 x 80.0	28.0 x 28.0 x 28.0
Grid Steps [mm]	10.0 x 10.0	5.0 x 5.0 x 1.4
Sensor Surface [mm]	3.0	1.4
Grading Ratio	N/A	1.5

Measurement Results

	SAR [W/kg]	Deviation [%]
psSAR1g	3.31	-5.92
psSAR10g	1.13	-8.35
Peak SAR (Extrapolated)	10.1	4.15



RF SAFETY LABORATORY

System Verification

Verification Conditions

Verification Source	Power [dBm]	Phantom Section	Test Distance [mm]	Signal, UID	Frequency [MHz]	ConvF (x, y, z)
D5GHzV2 - SN1396	17.0	Flat	10	CW, 0	5250.000	5.13

Test Setup

Test Date	Ambient Temp [°C]	TSL Temp [°C]	Measurement SW	Phantom	TSL Type	Cond. [S/m]	Perm.	Probe, Cal. Date	DAE, Cal. Date
2024-01-24	22.1	20.1	16.2.4.2524	Twinn-SAM V8.0 - 2165	HSL	4.62	34.7	EX3DV4 - SN7853, 2023-11-14	DAE4ip Sn1844, 2023-11-02

Scans Setup

	Area Scan	Zoom Scan
Grid Extents [mm]	40.0 x 80.0	22.0 x 22.0 x 22.0
Grid Steps [mm]	10.0 x 10.0	4.0 x 4.0 x 1.4
Sensor Surface [mm]	3.0	1.4
Grading Ratio	N/A	1.4

Measurement Results

	SAR [W/kg]	Deviation [%]
psSAR1g	3.89	-4.18
psSAR10g	1.12	-2.84
Peak SAR (Extrapolated)	15.0	-3.52



RF SAFETY LABORATORY

System Verification

Verification Conditions

Verification Source	Power [dBm]	Phantom Section	Test Distance [mm]	Signal, UID	Frequency [MHz]	ConvF (x, y, z)
D5GHzV2 - SN1396	17.0	Flat	10	CW, 0	5600.000	4.5

Test Setup

Test Date	Ambient Temp [°C]	TSL Temp [°C]	Measurement SW	Phantom	TSL Type	Cond. [S/m]	Perm.	Probe, Cal. Date	DAE, Cal. Date
2024-01-24	22.1	20.1	16.2.4.2524	Twin-SAM V8.0 - 2165	HSL	5.00	34.1	EX3DV4 - SN7853, 2023-11-14	DAE4ip Sn1844, 2023-11-02

Scans Setup

	Area Scan	Zoom Scan
Grid Extents [mm]	40.0 x 80.0	22.0 x 22.0 x 22.0
Grid Steps [mm]	10.0 x 10.0	4.0 x 4.0 x 1.4
Sensor Surface [mm]	3.0	1.4
Grading Ratio	N/A	1.4

Measurement Results

	SAR [W/kg]	Deviation [%]
psSAR1g	4.21	0.24
psSAR10g	1.20	0.18
Peak SAR (Extrapolated)	17.5	2.76



RF SAFETY LABORATORY

System Verification

Verification Conditions

Verification Source	Power [dBm]	Phantom Section	Test Distance [mm]	Signal, UID	Frequency [MHz]	ConvF (x, y, z)
D5GHzV2 - SN1396	17.0	Flat	10	CW, 0	5750.000	4.64

Test Setup

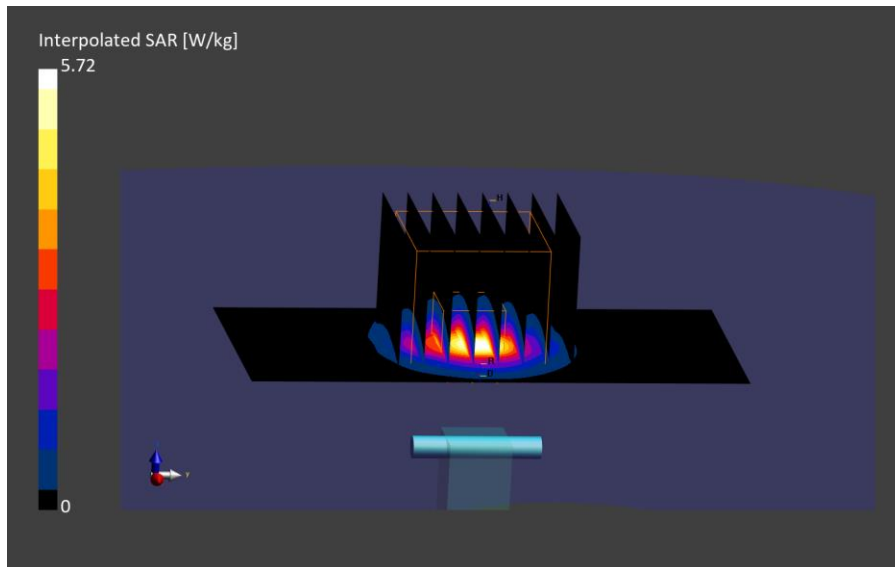
Test Date	Ambient Temp [°C]	TSL Temp [°C]	Measurement SW	Phantom	TSL Type	Cond. [S/m]	Perm.	Probe, Cal. Date	DAE, Cal. Date
2024-01-24	22.1	20.1	16.2.4.2524	Twinn-SAM V8.0 - 2165	HSL	5.17	33.8	EX3DV4 - SN7853, 2023-11-14	DAE4ip Sn1844, 2023-11-02

Scans Setup

	Area Scan	Zoom Scan
Grid Extents [mm]	40.0 x 80.0	22.0 x 22.0 x 22.0
Grid Steps [mm]	10.0 x 10.0	4.0 x 4.0 x 1.4
Sensor Surface [mm]	3.0	1.4
Grading Ratio	N/A	1.4

Measurement Results

	SAR [W/kg]	Deviation [%]
psSAR1g	3.91	-3.80
psSAR10g	1.12	-2.42
Peak SAR (Extrapolated)	16.6	-0.57



RF SAFETY LABORATORY

System Verification

Verification Conditions

Verification Source	Power [dBm]	Phantom Section	Test Distance [mm]	Signal, UID	Frequency [MHz]	ConvF (x, y, z)
D6.5GHzV2 - SN1104	20.0	Flat	5	CW, 0	6500.000	5.0

Test Setup

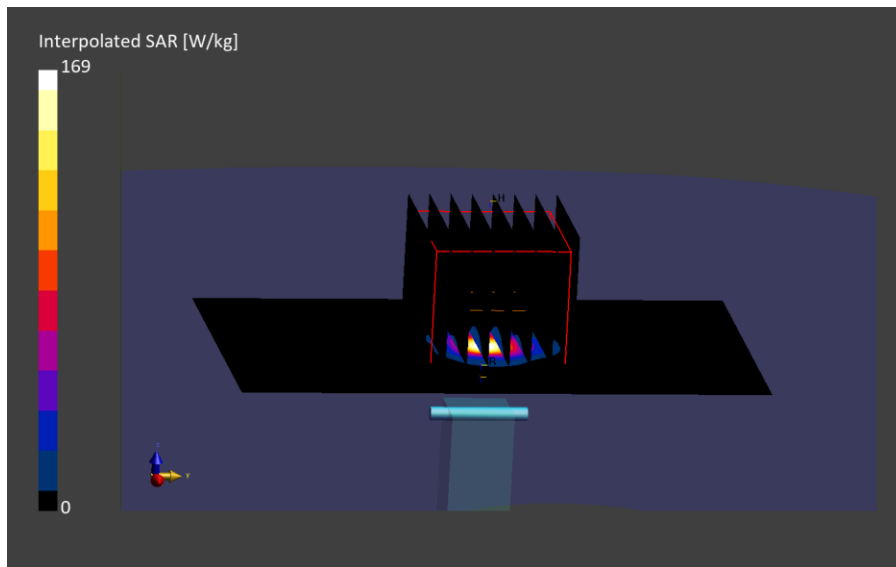
Test Date	Ambient Temp [°C]	TSL Temp [°C]	Measurement SW	Phantom	TSL Type	Cond. [S/m]	Perm.	Probe, Cal. Date	DAE, Cal. Date
2024-01-22	22.1	21	16.2.4.2524	Twin-SAM V8.0 - 2165	HSL	5.99	33.2	EX3DV4 - SN7853, 2023-11-14	DAE4ip Sn1844, 2023-11-02

Scans Setup

	Area Scan	Zoom Scan
Grid Extents [mm]	51.0 x 85.0	22.0 x 22.0 x 22.0
Grid Steps [mm]	8.5 x 8.5	3.4 x 3.4 x 1.4
Sensor Surface [mm]	3.0	1.4
Grading Ratio	N/A	1.4

Measurement Results

		Deviation [%]
psSAR1g SAR [W/kg]	26.8	-6.94
psSAR10g SAR [W/kg]	5.02	-5.82
psAPD (4.0 cm ² , sq) [W/m ²]	122	-6.15
Peak SAR (Extrapolated) [W/kg]	169	-14.43



RF SAFETY LABORATORY

System Verification

Verification Conditions

Verification Source	Power [dBm]	Phantom Section	Test Distance [mm]	Signal, UID	Frequency [MHz]	ConvF (x, y, z)
D6.5GHzV2 - SN1104	17.0	Flat	5	CW, 0	6500.000	5.0

Test Setup

Test Date	Ambient Temp [°C]	TSL Temp [°C]	Measurement SW	Phantom	TSL Type	Cond. [S/m]	Perm.	Probe, Cal. Date	DAE, Cal. Date
2024-02-06	22.3	20.8	16.2.4.2524	Twin-SAM V8.0 - 2165	HSL	5.81	31.6	EX3DV4 - SN7853, 2023-11-14	DAE4ip Sn1844, 2023-11-02

Scans Setup

	Area Scan	Zoom Scan
Grid Extents [mm]	51.0 x 85.0	22.0 x 22.0 x 22.0
Grid Steps [mm]	8.5 x 8.5	3.4 x 3.4 x 1.4
Sensor Surface [mm]	3.0	1.4
Grading Ratio	N/A	1.4

Measurement Results

		Deviation [%]
psSAR1g SAR [W/kg]	14.1	-2.32
psSAR10g SAR [W/kg]	2.65	-0.8
psAPD (4.0 cm ² , sq) [W/m ²]	64.6	-0.85
Peak SAR (Extrapolated) [W/kg]	87.7	-11.4



RF SAFETY LABORATORY

System Verification

Verification Conditions

Verification Source	Serial Number	Test Distance [mm]	Signal, UID	Frequency [MHz]
10 GHz Verification Source	1074	10.00	CW	10000.0

Test Setup

Test Date	Measurement SW	Probe, Cal. Date	DAE, Cal. Date
2024-02-10	3.2.2.2358	EUmmWV4 - SN9690_F1-55GHz - 2023-10-09	DAE4ip Sn1838 - 2023-10-09

Scans Setup

Grid Extents [mm]	Grid Steps [lambda]	Sensor Surface Distance [mm]
60.0x60.0	0.25x0.25	10.0

Measurement Results

Averaging Area [cm ²]	E _{max} [V/m]	psPD _n + [W/m ²]	psPD _{tot} + [W/m ²]
4.00	150	55.4	55.7

