

Appendix C: System Check Plots

RF SAFETY LABORATORY

System Verification

Verification Conditions

Verification Source	Serial Number	Test Distance [mm]	Signal, UID	Frequency [MHz]
30 GHz System Verification	1114	5.55	CW	30000.0

Test Setup

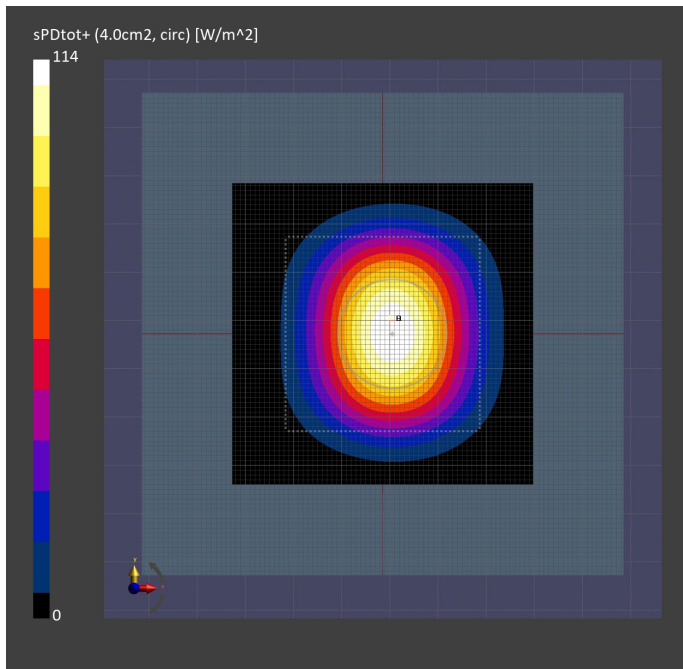
Test Date	Measurement SW	Probe, Cal. Date	DAE, Cal. Date
2024-01-23	3.2.2.2358	EUmmWV4 - SN9690_F1-55GHz - 2023-10-09	DAE4ip Sn1838 - 2023-10-09

Scans Setup

Grid Extents [mm]	Grid Steps [lambda]	Sensor Surface Distance [mm]
60.0x60.0	0.25x0.25	5.55

Measurement Results

Averaging Area [cm ²]	E _{max} [V/m]	psPDn+ [W/m ²]	psPDtot+ [W/m ²]
4.00	241	112	114



RF SAFETY LABORATORY

System Verification

Verification Conditions

Verification Source	Serial Number	Test Distance [mm]	Signal, UID	Frequency [MHz]
30 GHz System Verification	1114	5.55	CW	30000.0

Test Setup

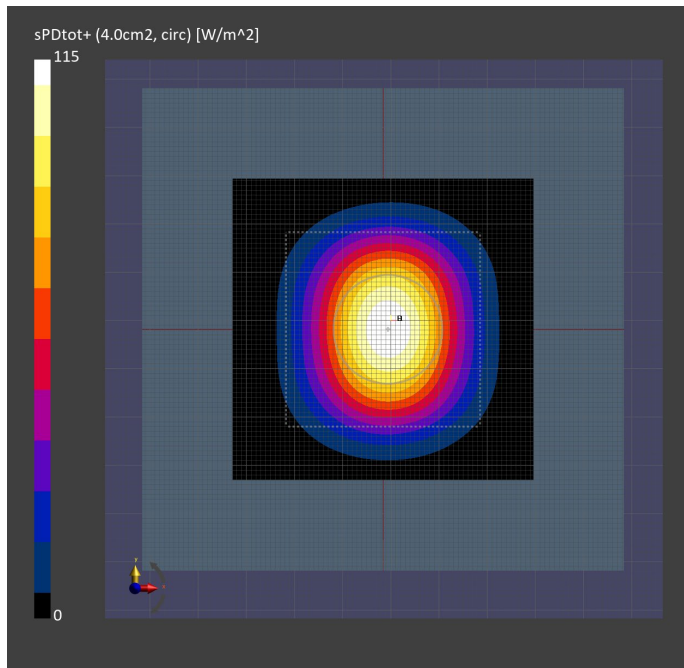
Test Date	Measurement SW	Probe, Cal. Date	DAE, Cal. Date
2024-01-28	3.2.2.2358	EUmmWV4 - SN9690_F1-55GHz - 2023-10-09	DAE4ip Sn1838 - 2023-10-09

Scans Setup

Grid Extents [mm]	Grid Steps [lambda]	Sensor Surface Distance [mm]
60.0x60.0	0.25x0.25	5.55

Measurement Results

Averaging Area [cm ²]	E _{max} [V/m]	psPDn+ [W/m ²]	psPDtot+ [W/m ²]
4.00	242	113	115



RF SAFETY LABORATORY

System Verification

Verification Conditions

Verification Source	Serial Number	Test Distance [mm]	Signal, UID	Frequency [MHz]
30 GHz System Verification	1114	5.55	CW	30000.0

Test Setup

Test Date	Measurement SW	Probe, Cal. Date	DAE, Cal. Date
2024-02-27	3.2.2.2358	EUmmWV4 - SN9690_F1-55GHz - 2023-10-09	DAE4ip Sn1 838 - 2023-10-09

Scans Setup

Grid Extents [mm]	Grid Steps [lambda]	Sensor Surface Distance [mm]
60.0x60.0	0.25x0.25	5.55

Measurement Results

Averaging Area [cm ²]	E _{max} [V/m]	psPDn+ [W/m ²]	psPDtot+ [W/m ²]
4.00	243	115	118

