

Appendix A: Test Plots

RF SAFETY LABORATORY

Ant 0 Beam 14/142

Verification Conditions

DUT	Serial Number	Position	Test Distance [mm]	Signal, UID	Frequency [MHz]
PY7-46195Y	0J2LA	EDGE LEFT	2.00	CW	25200.0

Test Setup

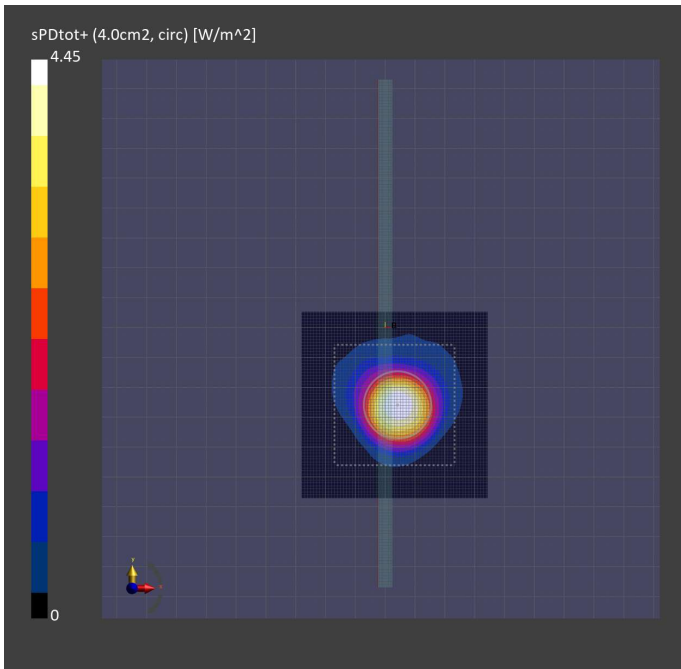
Test Date	Measurement SW	Probe, Cal. Date	DAE, Cal. Date
2024-01-23	3.2.2.2358	EUmmWV4 - SN9690_F1-55GHz - 2023-10-09	DAE4ip Sn1 838 - 2023-10-09

Scans Setup

Grid Extents [mm]	Grid Steps [lambda]	Sensor Surface Distance [mm]
60.0x60.0	0.25x0.25	2.0

Measurement Results

Averaging Area [cm ²]	Power Drift [dB]	E _{max} [V/m]	psPDn+ [W/m ²]	psPDtot+ [W/m ²]
4.00	0.01	94.4	3.07	4.45



RF SAFETY LABORATORY

Ant 0 Beam 135

Verification Conditions

DUT	Serial Number	Position	Test Distance [mm]	Signal, UID	Frequency [MHz]
PY7-46195Y	0J2LA	EDGE LEFT	2.00	CW	27925.0

Test Setup

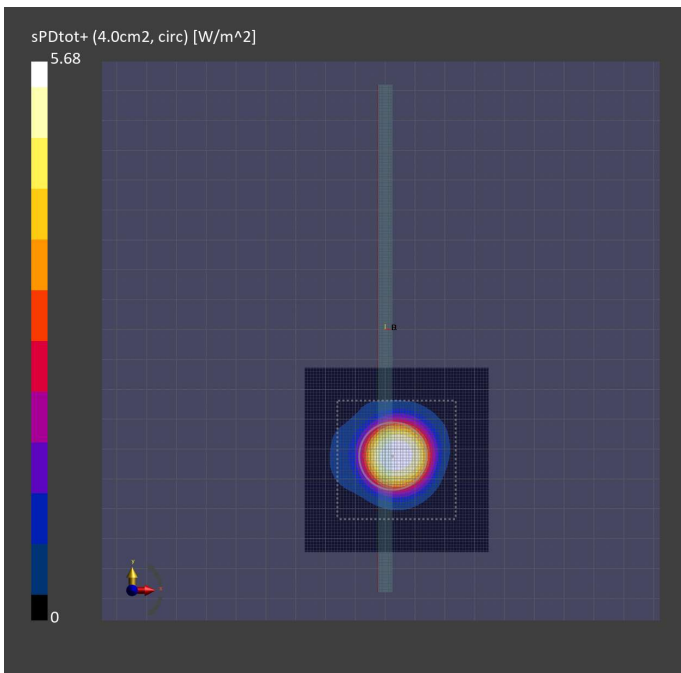
Test Date	Measurement SW	Probe, Cal. Date	DAE, Cal. Date
2024-01-23	3.2.2.2358	EUmmWV4 - SN9690_F1-55GHz - 2023-10-09	DAE4ip Sn1 838 - 2023-10-09

Scans Setup

Grid Extents [mm]	Grid Steps [lambda]	Sensor Surface Distance [mm]
60.0x60.0	0.25x0.25	2.0

Measurement Results

Averaging Area [cm ²]	Power Drift [dB]	E _{max} [V/m]	psPDn+ [W/m ²]	psPDtot+ [W/m ²]
4.00	0.04	129	4.30	5.68



RF SAFETY LABORATORY

Ant 0 Beam 41

Verification Conditions

DUT	Serial Number	Position	Test Distance [mm]	Signal, UID	Frequency [MHz]
PY7-46195Y	0J2LA	EDGE LEFT	2.00	CW	39949.9

Test Setup

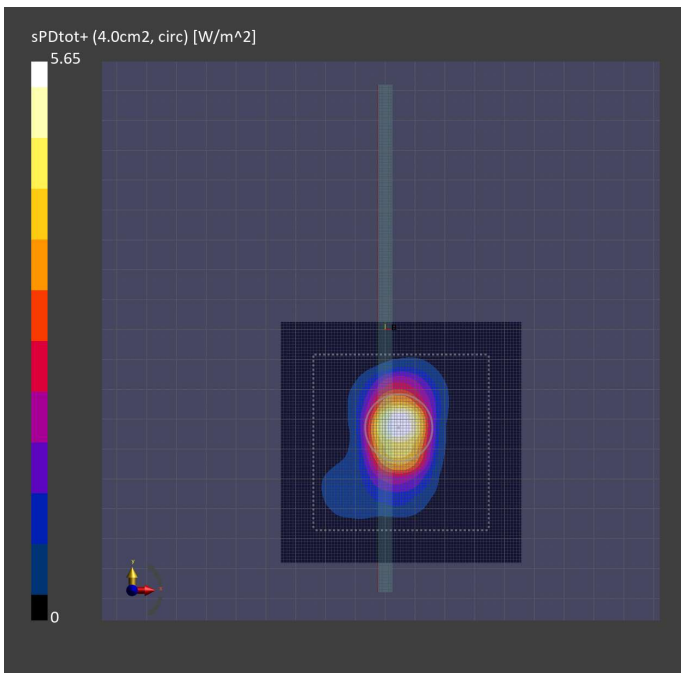
Test Date	Measurement SW	Probe, Cal. Date	DAE, Cal. Date
2024-01-23	3.2.2.2358	EUmmWV4 - SN9690_F1-55GHz - 2023-10-09	DAE4ip Sn1 838 - 2023-10-09

Scans Setup

Grid Extents [mm]	Grid Steps [lambda]	Sensor Surface Distance [mm]
80.0x80.0	0.25x0.25	2.0

Measurement Results

Averaging Area [cm ²]	Power Drift [dB]	E _{max} [V/m]	psPDn+ [W/m ²]	psPDtot+ [W/m ²]
4.00	-0.03	129	4.60	5.65



RF SAFETY LABORATORY

Ant 1 Beam 132

Verification Conditions

DUT	Serial Number	Position	Test Distance [mm]	Signal, UID	Frequency [MHz]
PY7-46195Y	0J2LA	EDGE RIGHT	2.00	CW	25200.0

Test Setup

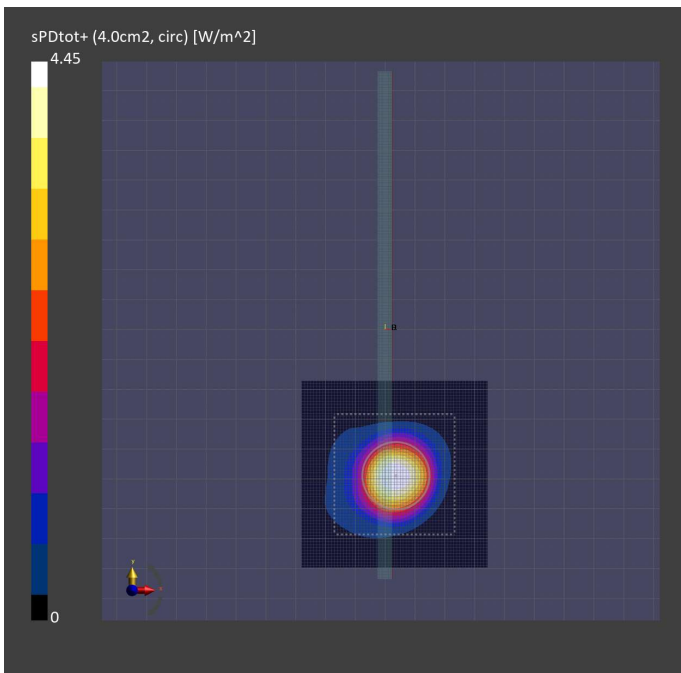
Test Date	Measurement SW	Probe, Cal. Date	DAE, Cal. Date
2024-01-23	3.2.2.2358	EUmmWV4 - SN9690_F1-55GHz - 2023-10-09	DAE4ip Sn1 838 - 2023-10-09

Scans Setup

Grid Extents [mm]	Grid Steps [lambda]	Sensor Surface Distance [mm]
60.0x60.0	0.25x0.25	2.0

Measurement Results

Averaging Area [cm ²]	Power Drift [dB]	E _{max} [V/m]	psPDn+ [W/m ²]	psPDtot+ [W/m ²]
4.00	0.02	90.6	3.49	4.45



RF SAFETY LABORATORY

Ant 1 Beam 153

Verification Conditions

DUT	Serial Number	Position	Test Distance [mm]	Signal, UID	Frequency [MHz]
PY7-46195Y	0J2LA	EDGE RIGHT	2.00	CW	27925.0

Test Setup

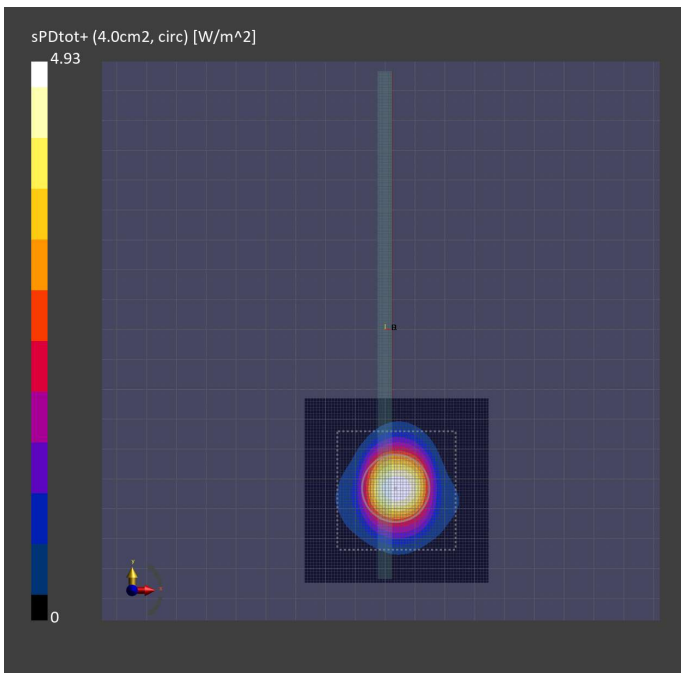
Test Date	Measurement SW	Probe, Cal. Date	DAE, Cal. Date
2024-01-23	3.2.2.2358	EUmmWV4 - SN9690_F1-55GHz - 2023-10-09	DAE4ip Sn1 838 - 2023-10-09

Scans Setup

Grid Extents [mm]	Grid Steps [lambda]	Sensor Surface Distance [mm]
60.0x60.0	0.25x0.25	2.0

Measurement Results

Averaging Area [cm ²]	Power Drift [dB]	E _{max} [V/m]	psPDn+ [W/m ²]	psPDtot+ [W/m ²]
4.00	0.01	89.3	4.17	4.93



RF SAFETY LABORATORY

Ant 1 Beam 28

Verification Conditions

DUT	Serial Number	Position	Test Distance [mm]	Signal, UID	Frequency [MHz]
PY7-46195Y	0J2LA	EDGE RIGHT	2.00	CW	38500.0

Test Setup

Test Date	Measurement SW	Probe, Cal. Date	DAE, Cal. Date
2024-01-23	3.2.2.2358	EUmmWV4 - SN9690_F1-55GHz - 2023-10-09	DAE4ip Sn1 838 - 2023-10-09

Scans Setup

Grid Extents [mm]	Grid Steps [lambda]	Sensor Surface Distance [mm]
60.0x60.0	0.25x0.25	2.0

Measurement Results

Averaging Area [cm ²]	Power Drift [dB]	E _{max} [V/m]	psPDn+ [W/m ²]	psPDtot+ [W/m ²]
4.00	0.05	93.1	4.22	4.89

