

# Appendix A: SAR Test Plots

## RF SAFETY LABORATORY

DUT: PY7-46195Y; SN: ORTLA

### Test Conditions

Exposure Condition	Position, Test Distance [mm]	Band	Signal, UID	Ant.	Channel Number	Frequency [MHz]	ConvF (x,y,z)
Body	Flat, BACK, 0.00	Band 71	LTE-FDD (SC-FDMA, 1 RB, 20 MHz, QPSK) RBPosition:High AntennaCfg:SISO, 10169	Main1	Ch. 133297	680.500	9.44

### Test Setup

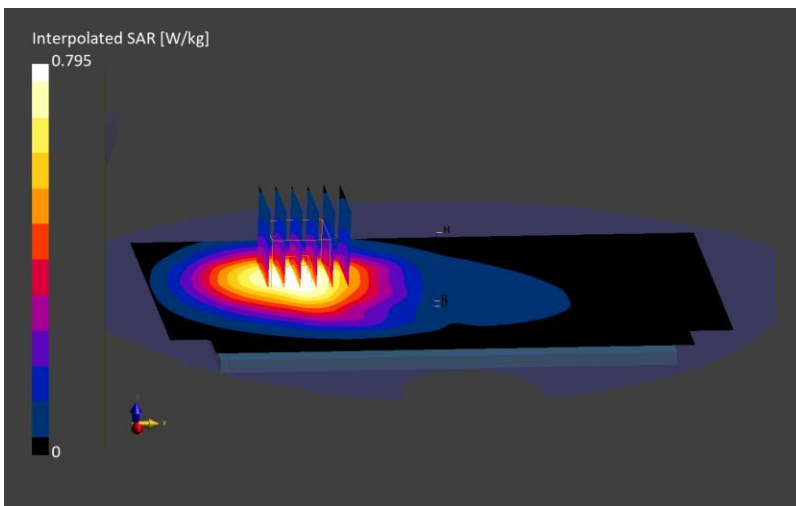
Test Date	Ambient Temp [°C]	TSL Temp [°C]	Measurement SW	Phantom	Type	Cond. [S/m]	TSL Perm.	Probe, Cal. Date	DAE, Cal. Date
2024-01-23	22.5	21.5	16.2.4.2524	Twin-SAM V8.0 - 2159	HSL	0.888	42.9	EX3DV4 - SN7836, 2023-10-11	DAE4ip Sn1839, 2023-10-09

### Scans Setup

	Area Scan	Zoom Scan
Grid Extents [mm]	120.0 x 210.0	30.0 x 30.0 x 30.0
Grid Steps [mm]	15.0 x 15.0	6.0 x 6.0 x 1.5
Sensor Surface [mm]	3.0	1.4
Grading Ratio	N/A	1.5
MAIA	Y	Y

### Measurement Results

psSAR1g [W/Kg]	0.52
Power Drift [dB]	-0.03
Peak SAR (Extrapolated) [W/kg]	0.795
M2/M1 [%]	86.3
Dist 3dB Peak [mm]	21.3



# RF SAFETY LABORATORY

DUT: PY7-46195Y; SN: ORTLA

## Test Conditions

Exposure Condition	Position, Test Distance [mm]	Band	Signal, UID	Ant.	Channel Number	Frequency [MHz]	ConvF (x,y,z)
Extremity	Flat, EDGE BOTTOM, 0.00	Band 71	LTE-FDD (SC-FDMA, 1 RB, 20 MHz, QPSK) RBPosition:High AntennaCfg:SISO, 10169	Main1	Ch. 133297	680.500	9.44

## Test Setup

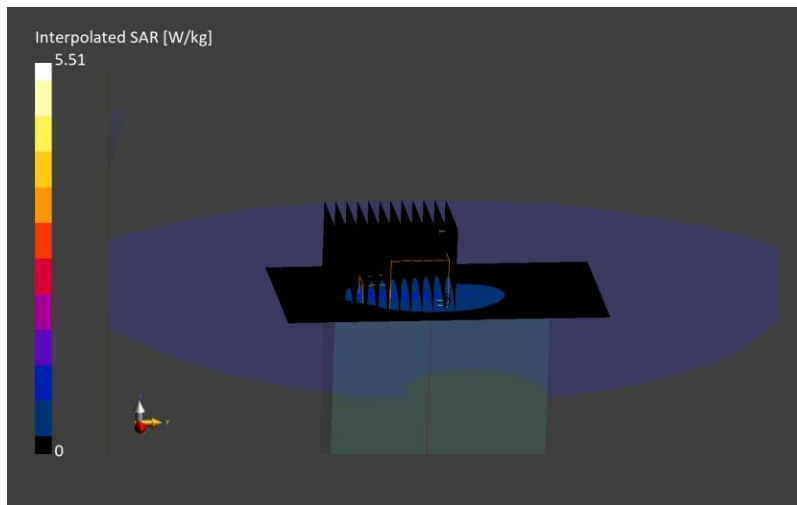
Test Date	Ambient Temp [°C]	TSL Temp [°C]	Measurement SW	Phantom	Type	Cond. [S/m]	TSL Perm.	Probe, Cal. Date	DAE, Cal. Date
2024-01-23	22.5	21.5	16.2.4.2524	Twin-SAM V8.0 - 2159	HSL	0.888	42.9	EX3DV4 - SN7836, 2023-10-11	DAE4ip Sn1839, 2023-10-09

## Scans Setup

	Area Scan	Zoom Scan
Grid Extents [mm]	60.0 x 120.0	30.0 x 30.0 x 30.0
Grid Steps [mm]	15.0 x 15.0	4.1 x 4.1 x 1.4
Sensor Surface [mm]	3.0	1.4
Grading Ratio	N/A	1.4
MAIA	Y	Y

## Measurement Results

psSAR10g [W/Kg]	0.527
Power Drift [dB]	0.04
Peak SAR (Extrapolated) [W/kg]	5.51
M2/M1 [%]	51.0
Dist 3dB Peak [mm]	5.0



# RF SAFETY LABORATORY

DUT: PY7-46195Y; SN: 0C9LA

## Test Conditions

Exposure Condition	Position, Test Distance [mm]	Band	Signal, UID	Ant.	Channel Number	Frequency [MHz]	ConvF (x,y,z)
Body	Flat, BACK, 0.00	Band 12	LTE-FDD (SC-FDMA, 1 RB, 10 MHz, QPSK) RBPosition:Mid AntennaCfg:SISO, 10175	Main1	Ch. 23095	707.500	9.44

## Test Setup

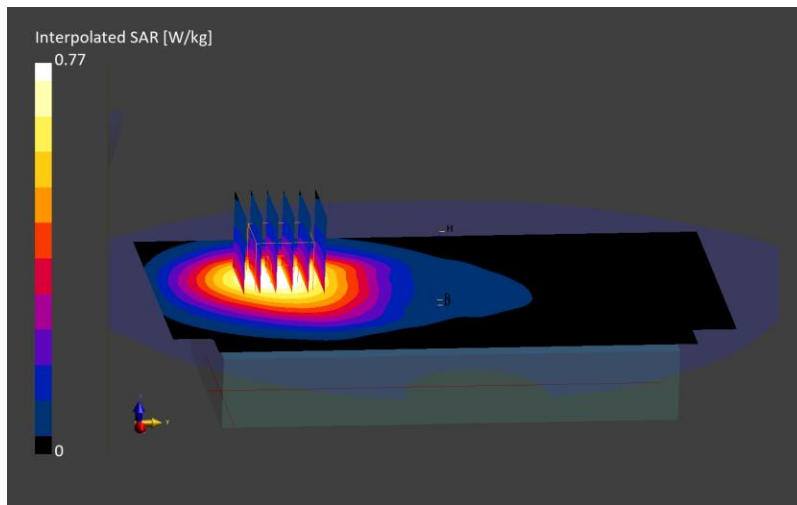
Test Date	Ambient Temp [°C]	TSL Temp [°C]	Measurement SW	Phantom	Type	Cond. [S/m]	TSL Perm.	Probe, Cal. Date	DAE, Cal. Date
2024-02-09	22.4	22.1	16.2.4.2524	Twin-SAM V8.0 - 2159	HSL	0.890	41.9	EX3DV4 - SN7836, 2023-10-11	DAE4ip Sn1839, 2023-10-09

## Scans Setup

	Area Scan	Zoom Scan
Grid Extents [mm]	120.0 x 210.0	30.0 x 30.0 x 30.0
Grid Steps [mm]	15.0 x 15.0	6.0 x 6.0 x 1.5
Sensor Surface [mm]	3.0	1.4
Grading Ratio	N/A	1.5
MAIA	Y	Y

## Measurement Results

psSAR1g [W/Kg]	0.484
Power Drift [dB]	0
Peak SAR (Extrapolated) [W/kg]	0.770
M2/M1 [%]	84.1
Dist 3dB Peak [mm]	> 15.0



# RF SAFETY LABORATORY

DUT: PY7-46195Y; SN: ORTLA

## Test Conditions

Exposure Condition	Position, Test Distance [mm]	Band	Signal, UID	Ant.	Channel Number	Frequency [MHz]	ConvF (x,y,z)
Extremity	Flat, EDGE BOTTOM, 0.00	Band 12	LTE-FDD (SC-FDMA, 1 RB, 10 MHz, QPSK) RBPosition:Mid AntennaCfg:SISO, 10175	Main1	Ch. 23095	707.500	9.44

## Test Setup

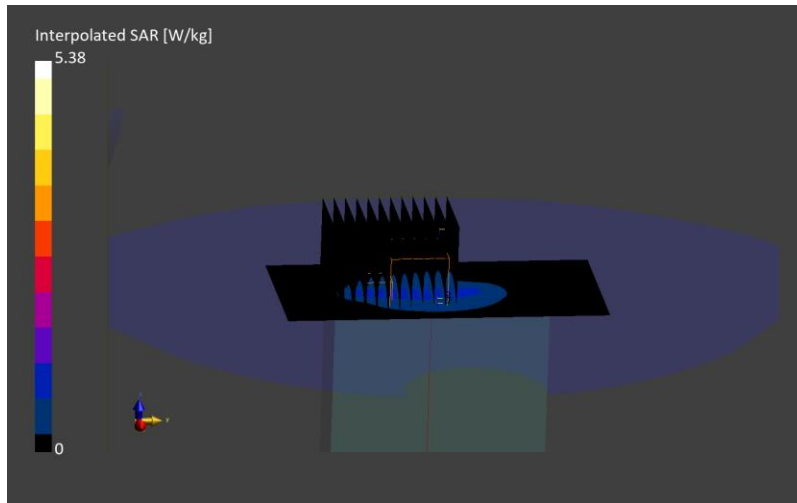
Test Date	Ambient Temp [°C]	TSL Temp [°C]	Measurement SW	Phantom	Type	Cond. [S/m]	TSL Perm.	Probe, Cal. Date	DAE, Cal. Date
2024-01-23	22.5	21.5	16.2.4.2524	Twin-SAM V8.0 - 2159	HSL	0.899	42.8	EX3DV4 - SN7836, 2023-10-11	DAE4ip Sn1839, 2023-10-09

## Scans Setup

	Area Scan	Zoom Scan
Grid Extents [mm]	60.0 x 120.0	30.0 x 30.0 x 30.0
Grid Steps [mm]	15.0 x 15.0	4.2 x 4.2 x 1.4
Sensor Surface [mm]	3.0	1.4
Grading Ratio	N/A	1.4
MAIA	Y	Y

## Measurement Results

psSAR10g [W/Kg]	0.562
Power Drift [dB]	0.01
Peak SAR (Extrapolated) [W/kg]	5.38
M2/M1 [%]	55.9
Dist 3dB Peak [mm]	4.6



# RF SAFETY LABORATORY

DUT: PY7-46195Y; SN: 0C9LA

## Test Conditions

Exposure Condition	Position, Test Distance [mm]	Band	Signal, UID	Ant.	Channel Number	Frequency [MHz]	ConvF (x,y,z)
Body	Flat, BACK, 0.00	Band 13	LTE-FDD (SC-FDMA, 50% RB, 10 MHz, QPSK) RBPosition:High AntennaCfg:SISO, 10154	Main1	Ch. 23230	782.000	9.44

## Test Setup

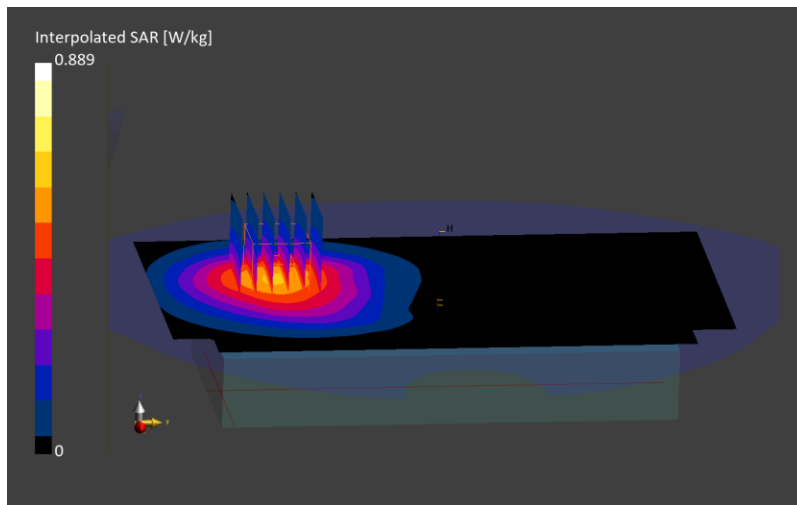
Test Date	Ambient Temp [°C]	TSL Temp [°C]	Measurement SW	Phantom	Type	Cond. [S/m]	TSL Perm.	Probe, Cal. Date	DAE, Cal. Date
2024-02-09	22.4	22.1	16.2.4.2524	Twin-SAM V8.0 - 2159	HSL	0.913	41.7	EX3DV4 - SN7836, 2023-10-11	DAE4ip Sn1839, 2023-10-09

## Scans Setup

	Area Scan	Zoom Scan
Grid Extents [mm]	120.0 x 210.0	30.0 x 30.0 x 30.0
Grid Steps [mm]	15.0 x 15.0	6.0 x 6.0 x 1.5
Sensor Surface [mm]	3.0	1.4
Grading Ratio	N/A	1.5
MAIA	Y	Y

## Measurement Results

psSAR1g [W/Kg]	0.563
Power Drift [dB]	-0.01
Peak SAR (Extrapolated) [W/kg]	0.889
M2/M1 [%]	84.2
Dist 3dB Peak [mm]	> 15.0



# RF SAFETY LABORATORY

DUT: PY7-46195Y; SN: ORTLA

## Test Conditions

Exposure Condition	Position, Test Distance [mm]	Band	Signal, UID	Ant.	Channel Number	Frequency [MHz]	ConvF (x,y,z)
Extremity	Flat, EDGE BOTTOM, 0.00	Band 13	LTE-FDD (SC-FDMA, 1 RB, 10 MHz, QPSK) RBPosition:High AntennaCfg:SISO, 10175	Main1	Ch. 23230	782.000	9.44

## Test Setup

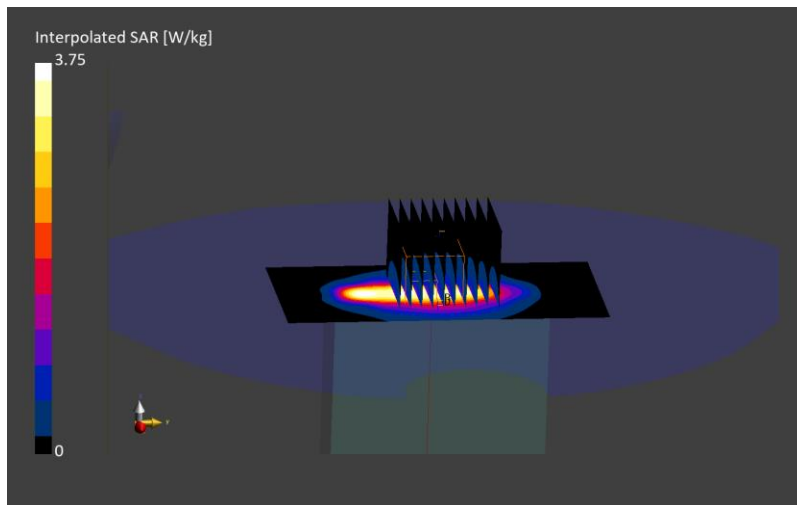
Test Date	Ambient Temp [°C]	TSL Temp [°C]	Measurement SW	Phantom	Type	Cond. [S/m]	TSL Perm.	Probe, Cal. Date	DAE, Cal. Date
2024-01-23	22.5	21.5	16.2.4.2524	Twin-SAM V8.0 - 2159	HSL	0.922	42.5	EX3DV4 - SN7836, 2023-10-11	DAE4ip Sn1839, 2023-10-09

## Scans Setup

	Area Scan	Zoom Scan
Grid Extents [mm]	60.0 x 120.0	32.8 x 32.8 x 30.0
Grid Steps [mm]	15.0 x 15.0	4.1 x 4.1 x 1.5
Sensor Surface [mm]	3.0	1.4
Grading Ratio	N/A	1.5
MAIA	Y	Y

## Measurement Results

psSAR10g [W/Kg]	0.6
Power Drift [dB]	0.02
Peak SAR (Extrapolated) [W/kg]	3.75
M2/M1 [%]	58.6
Dist 3dB Peak [mm]	5.8



# RF SAFETY LABORATORY

DUT: PY7-46195Y; SN: 0F1LA

## Test Conditions

Exposure Condition	Position, Test Distance [mm]	Band	Signal, UID	Ant.	Channel Number	Frequency [MHz]	ConvF (x,y,z)
Body	Flat, BACK, 0.00	Band 5	LTE-FDD (SC-FDMA, 1 RB, 10 MHz, QPSK) RBPosition:Low AntennaCfg:SISO, 10175	Main1	Ch. 20525	836.500	9.24

## Test Setup

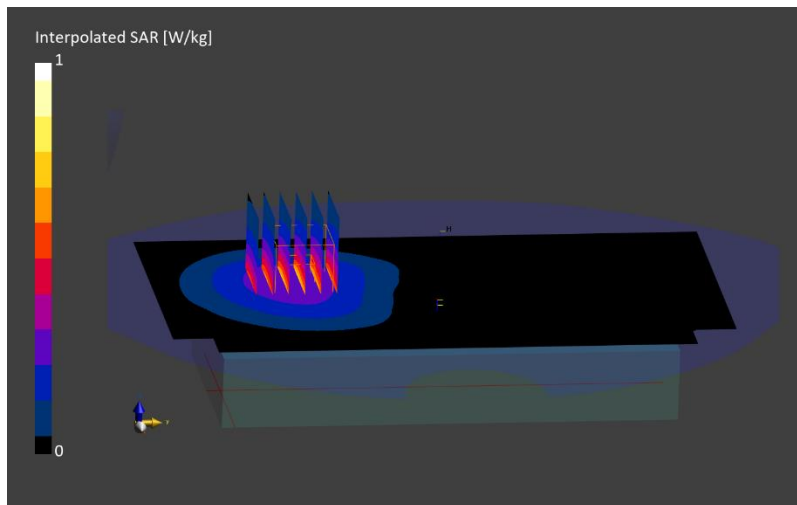
Test Date	Ambient Temp [°C]	TSL Temp [°C]	Measurement SW	Phantom	Type	Cond. [S/m]	TSL Perm.	Probe, Cal. Date	DAE, Cal. Date
2024-02-12	21.6	21.5	16.2.4.2524	Twinn-SAM V8.0 - 2165	HSL	0.939	43.4	EX3DV4 - SN7859, 2023-12-19	DAE4ip Sn1844, 2023-11-02

## Scans Setup

	Area Scan	Zoom Scan
Grid Extents [mm]	120.0 x 210.0	30.0 x 30.0 x 30.0
Grid Steps [mm]	15.0 x 15.0	6.0 x 6.0 x 1.5
Sensor Surface [mm]	3.0	1.4
Grading Ratio	N/A	1.5
MAIA	Y	Y

## Measurement Results

psSAR1g [W/Kg]	0.648
Power Drift [dB]	0
Peak SAR (Extrapolated) [W/kg]	1.00
M2/M1 [%]	85.8
Dist 3dB Peak [mm]	> 15.0



# RF SAFETY LABORATORY

DUT: PY7-46195Y; SN: 0F1LA

## Test Conditions

Exposure Condition	Position, Test Distance [mm]	Band	Signal, UID	Ant.	Channel Number	Frequency [MHz]	ConvF (x,y,z)
Extremity	Flat, EDGE BOTTOM, 0.00	Band 5	LTE-FDD (SC-FDMA, 1 RB, 10 MHz, QPSK) RBPosition:Low AntennaCfg:SISO, 10175	Main1	Ch. 20525	836.500	9.24

## Test Setup

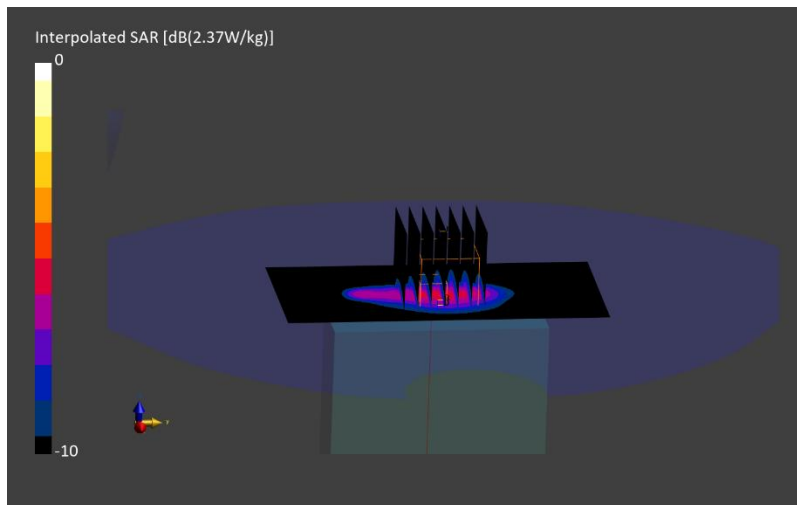
Test Date	Ambient Temp [°C]	TSL Temp [°C]	Measurement SW	Phantom	Type	Cond. [S/m]	TSL Perm.	Probe, Cal. Date	DAE, Cal. Date
2024-02-09	22.2	21.7	16.2.4.2524	Twin-SAM V8.0 - 2165	HSL	0.916	42.8	EX3DV4 - SN7859, 2023-12-19	DAE4ip Sn1844, 2023-11-02

## Scans Setup

	Area Scan	Zoom Scan
Grid Extents [mm]	60.0 x 120.0	30.0 x 30.0 x 30.0
Grid Steps [mm]	15.0 x 15.0	5.0 x 5.0 x 1.5
Sensor Surface [mm]	3.0	1.4
Grading Ratio	N/A	1.5
MAIA	Y	Y

## Measurement Results

psSAR10g [W/Kg]	0.345
Power Drift [dB]	-0.02
Peak SAR (Extrapolated) [W/kg]	1.88
M2/M1 [%]	59.8
Dist 3dB Peak [mm]	7.0





# RF SAFETY LABORATORY

DUT: PY7-46195Y; SN: 0F1LA

## Test Conditions

Exposure Condition	Position, Test Distance [mm]	Band	Signal, UID	Ant.	Channel Number	Frequency [MHz]	ConvF (x,y,z)
Body	Flat, FRONT, 5.00	Band 66	LTE-FDD (SC-FDMA, 50% RB, 20 MHz, QPSK) RBPosition:Mid AntennaCfg:SISO, 10297	Main2	Ch. 132322	1745.000	8.34

## Test Setup

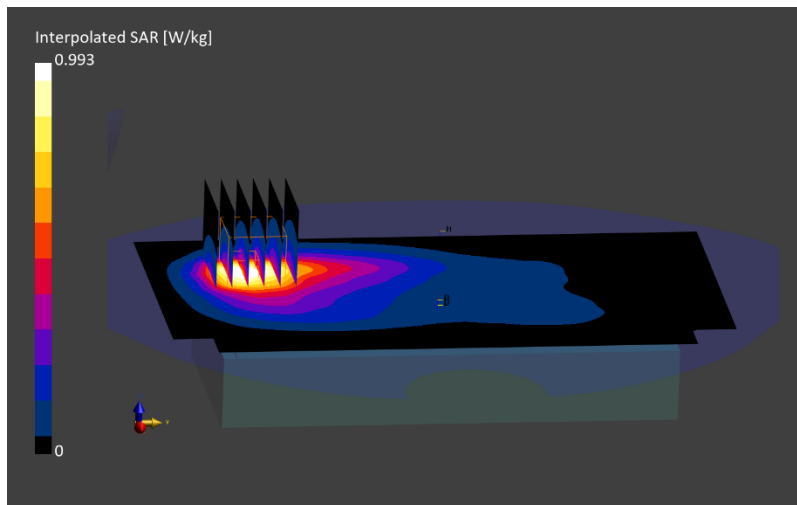
Test Date	Ambient Temp [°C]	TSL Temp [°C]	Measurement SW	Phantom	Type	Cond. [S/m]	TSL Perm.	Probe, Cal. Date	DAE, Cal. Date
2024-02-08	22.6	21.4	16.2.4.2524	Twinn-SAM V8.0 - 2165	HSL	1.36	40.8	EX3DV4 - SN7859, 2023-12-19	DAE4ip Sn1844, 2023-11-02

## Scans Setup

	Area Scan	Zoom Scan
Grid Extents [mm]	120.0 x 210.0	30.0 x 30.0 x 30.0
Grid Steps [mm]	15.0 x 15.0	6.0 x 6.0 x 1.5
Sensor Surface [mm]	3.0	1.4
Grading Ratio	N/A	1.5
MAIA	Y	Y

## Measurement Results

psSAR1g [W/Kg]	0.545
Power Drift [dB]	0.01
Peak SAR (Extrapolated) [W/kg]	0.993
M2/M1 [%]	81.3
Dist 3dB Peak [mm]	13.3



# RF SAFETY LABORATORY

DUT: PY7-46195Y; SN: 0C9LA

## Test Conditions

Exposure Condition	Position, Test Distance [mm]	Band	Signal, UID	Ant.	Channel Number	Frequency [MHz]	ConvF (x,y,z)
Extremity	Flat, EDGE BOTTOM, 0.00	Band 66	LTE-FDD (SC-FDMA, 50% RB, 20 MHz, QPSK) RBPosition:Mid AntennaCfg:SISO, 10297	Main2	Ch. 132322	1745.000	8.34

## Test Setup

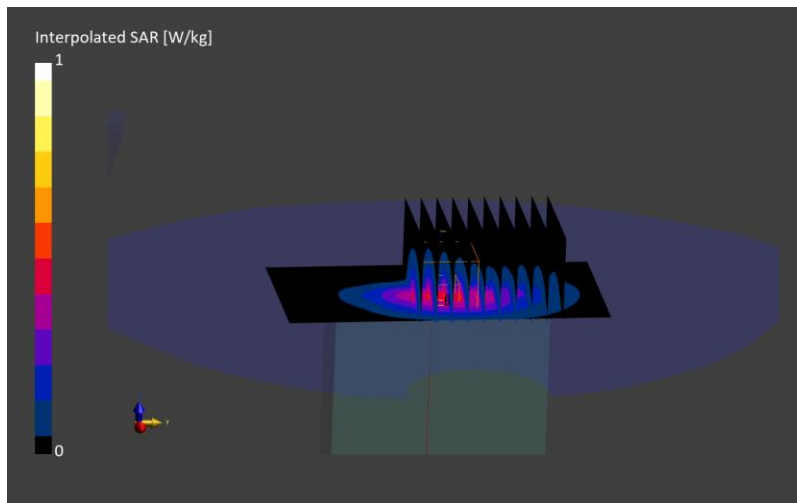
Test Date	Ambient Temp [°C]	TSL Temp [°C]	Measurement SW	Phantom	Type	Cond. [S/m]	TSL Perm.	Probe, Cal. Date	DAE, Cal. Date
2024-01-30	22.1	20.4	16.2.4.2524	Twin-SAM V8.0 - 2165	HSL	1.39	40.2	EX3DV4 - SN7859, 2023-12-19	DAE4ip Sn1844, 2023-11-02

## Scans Setup

	Area Scan	Zoom Scan
Grid Extents [mm]	60.0 x 120.0	30.0 x 30.0 x 30.0
Grid Steps [mm]	15.0 x 15.0	5.9 x 5.9 x 1.5
Sensor Surface [mm]	3.0	1.4
Grading Ratio	N/A	1.5
MAIA	Y	Y

## Measurement Results

psSAR10g [W/Kg]	0.244
Power Drift [dB]	0.06
Peak SAR (Extrapolated) [W/kg]	1.24
M2/M1 [%]	57.2
Dist 3dB Peak [mm]	7.1



# RF SAFETY LABORATORY

DUT: PY7-46195Y; SN: 0C9LA

## Test Conditions

Exposure Condition	Position, Test Distance [mm]	Band	Signal, UID	Ant.	Channel Number	Frequency [MHz]	ConvF (x,y,z)
Body	Flat, FRONT, 5.00	Band 25	LTE-FDD (SC-FDMA, 50% RB, 20 MHz, QPSK) RBPosition:Mid AntennaCfg:SISO, 10297	Main2	Ch. 26590	1905.000	8.26

## Test Setup

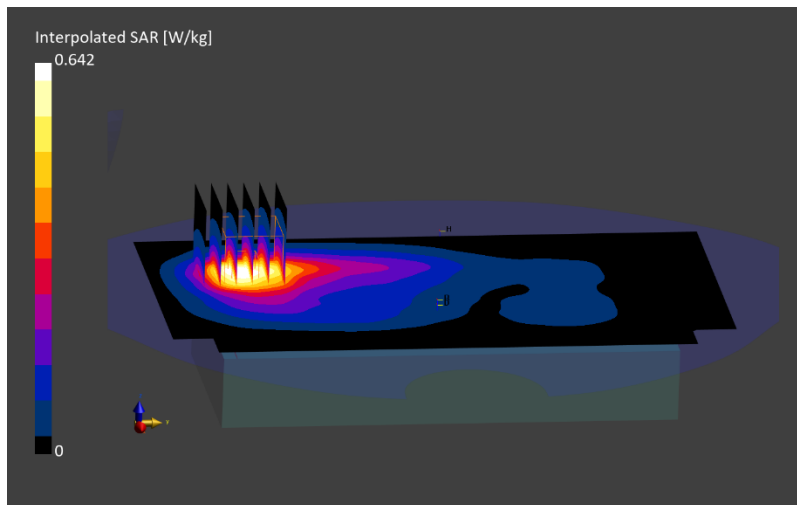
Test Date	Ambient Temp [°C]	TSL Temp [°C]	Measurement SW	Phantom	Type	Cond. [S/m]	TSL Perm.	Probe, Cal. Date	DAE, Cal. Date
2024-02-09	22.4	22.1	16.2.4.2524	Twin-SAM V8.0 - 2159	HSL	1.45	39.4	EX3DV4 - SN7836, 2023-10-11	DAE4ip Sn1839, 2023-10-09

## Scans Setup

	Area Scan	Zoom Scan
Grid Extents [mm]	120.0 x 210.0	30.0 x 30.0 x 30.0
Grid Steps [mm]	15.0 x 15.0	6.0 x 6.0 x 1.5
Sensor Surface [mm]	3.0	1.4
Grading Ratio	N/A	1.5
MAIA	Y	Y

## Measurement Results

psSAR1g [W/Kg]	0.578
Power Drift [dB]	0
Peak SAR (Extrapolated) [W/kg]	1.08
M2/M1 [%]	80.4
Dist 3dB Peak [mm]	12.8



# RF SAFETY LABORATORY

DUT: PY7-46195Y; SN: 0F1LA

## Test Conditions

Exposure Condition	Position, Test Distance [mm]	Band	Signal, UID	Ant.	Channel Number	Frequency [MHz]	ConvF (x,y,z)
Extremity	Flat, EDGE BOTTOM, 0.00	Band 25	LTE-FDD (SC-FDMA, 50% RB, 20 MHz, QPSK) RBPosition:Mid AntennaCfg:SISO, 10297	Main2	Ch. 26590	1905.000	8.26

## Test Setup

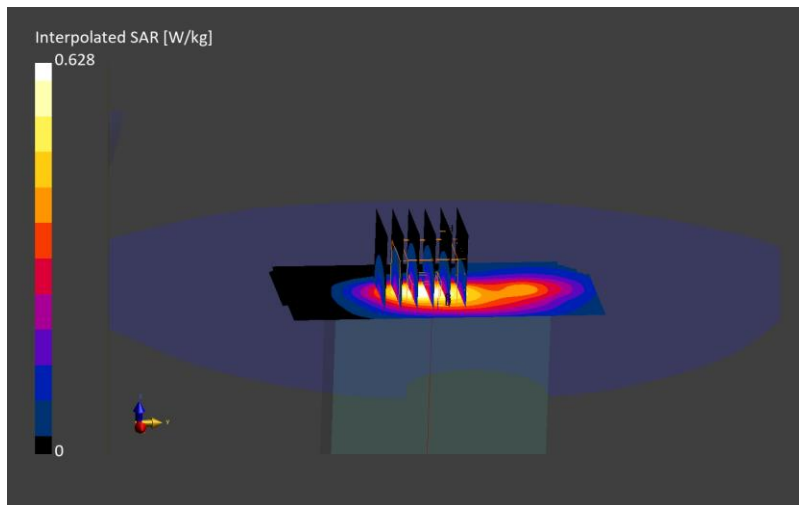
Test Date	Ambient Temp [°C]	TSL Temp [°C]	Measurement SW	Phantom	Type	Cond. [S/m]	TSL Perm.	Probe, Cal. Date	DAE, Cal. Date
2024-02-02	22.9	22	16.2.4.2524	Twin-SAM V8.0 - 2159	HSL	1.44	40.0	EX3DV4 - SN7836, 2023-10-11	DAE4ip Sn1839, 2023-10-09

## Scans Setup

	Area Scan	Zoom Scan
Grid Extents [mm]	60.0 x 120.0	30.0 x 30.0 x 30.0
Grid Steps [mm]	15.0 x 15.0	6.0 x 6.0 x 1.5
Sensor Surface [mm]	3.0	1.4
Grading Ratio	N/A	1.5
MAIA	Y	Y

## Measurement Results

psSAR10g [W/Kg]	0.175
Power Drift [dB]	0
Peak SAR (Extrapolated) [W/kg]	0.628
M2/M1 [%]	79.5
Dist 3dB Peak [mm]	8.4



# RF SAFETY LABORATORY

DUT: PY7-46195Y; SN: ORTLA

## Test Conditions

Exposure Condition	Position, Test Distance [mm]	Band	Signal, UID	Ant.	Channel Number	Frequency [MHz]	ConvF (x,y,z)
Body	Flat, FRONT, 5.00	Band 2	LTE-FDD (SC-FDMA, 1 RB, 20 MHz, QPSK) RBPosition:High AntennaCfg:SISO, 10169	Sub	Ch. 18900	1880.000	8.26

## Test Setup

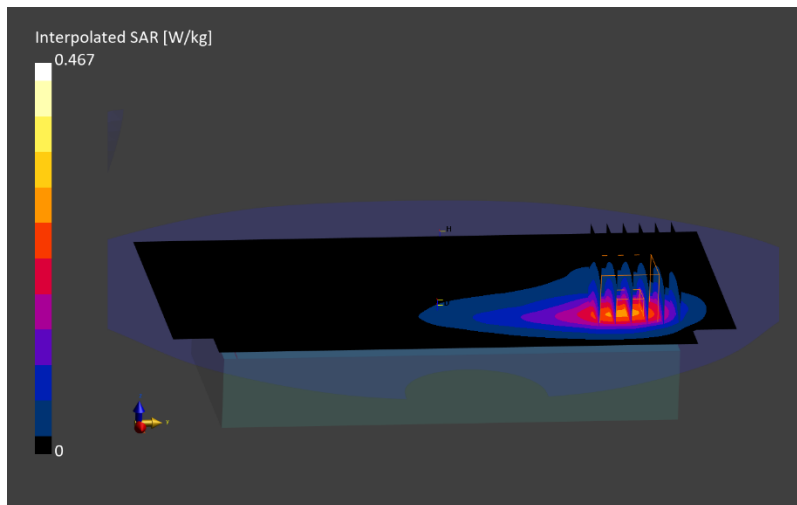
Test Date	Ambient Temp [°C]	TSL Temp [°C]	Measurement SW	Phantom	Type	Cond. [S/m]	TSL Perm.	Probe, Cal. Date	DAE, Cal. Date
2024-02-02	22.9	22	16.2.4.2524	Twin-SAM V8.0 - 2159	HSL	1.43	40.0	EX3DV4 - SN7836, 2023-10-11	DAE4ip Sn1839, 2023-10-09

## Scans Setup

	Area Scan	Zoom Scan
Grid Extents [mm]	120.0 x 210.0	30.0 x 30.0 x 30.0
Grid Steps [mm]	15.0 x 15.0	6.0 x 6.0 x 1.5
Sensor Surface [mm]	3.0	1.4
Grading Ratio	N/A	1.5
MAIA	Y	Y

## Measurement Results

psSAR1g [W/Kg]	0.205
Power Drift [dB]	-0.02
Peak SAR (Extrapolated) [W/kg]	0.467
M2/M1 [%]	80.8
Dist 3dB Peak [mm]	14.4



# RF SAFETY LABORATORY

DUT: PY7-46195Y; SN: 0C9LA

## Test Conditions

Exposure Condition	Position, Test Distance [mm]	Band	Signal, UID	Ant.	Channel Number	Frequency [MHz]	ConvF (x,y,z)
Body	Flat, BACK, 0.00	Band 30	LTE-FDD (SC-FDMA, 1 RB, 10 MHz, QPSK) RBPosition:Mid AntennaCfg:SISO, 10175	Main2	Ch. 27710	2310.000	7.46

## Test Setup

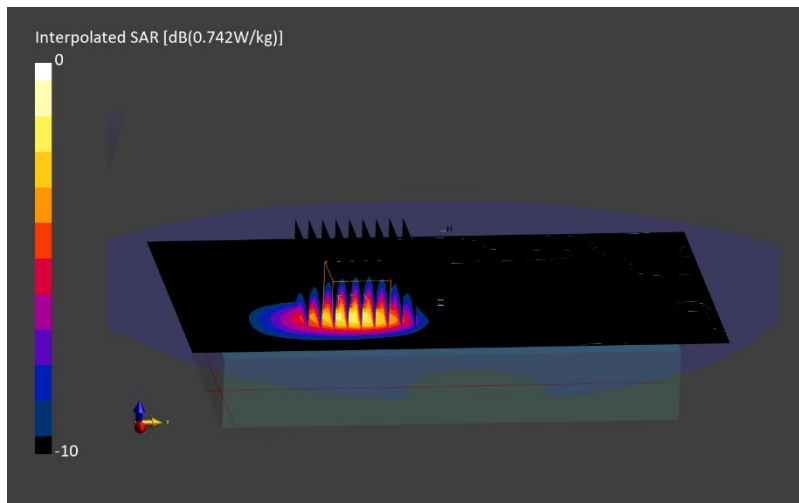
Test Date	Ambient Temp [°C]	TSL Temp [°C]	Measurement SW	Phantom	Type	Cond. [S/m]	TSL Perm.	Probe, Cal. Date	DAE, Cal. Date
2024-02-07	21.9	20.3	16.2.4.2524	Twinn-SAM V8.0 - 2164	HSL	1.75	40.5	EX3DV4 - SN7857, 2023-12-19	DAE4ip Sn1843, 2023-11-02

## Scans Setup

	Area Scan	Zoom Scan
Grid Extents [mm]	120.0 x 200.0	30.0 x 30.0 x 30.0
Grid Steps [mm]	10.0 x 10.0	5.0 x 5.0 x 1.5
Sensor Surface [mm]	3.0	1.4
Grading Ratio	N/A	1.5
MAIA	Y	Y

## Measurement Results

psSAR1g [W/Kg]	0.406
Power Drift [dB]	0.01
Peak SAR (Extrapolated) [W/kg]	0.742
M2/M1 [%]	83.3
Dist 3dB Peak [mm]	12.0



# RF SAFETY LABORATORY

DUT: PY7-46195Y; SN: 0F1LA

## Test Conditions

Exposure Condition	Position, Test Distance [mm]	Band	Signal, UID	Ant.	Channel Number	Frequency [MHz]	ConvF (x,y,z)
Extremity	Flat, EDGE BOTTOM, 5.00	Band 30	LTE-FDD (SC-FDMA, 1 RB, 10 MHz, QPSK) RBPosition:Mid AntennaCfg:SISO, 10175	Main2	Ch. 27710	2310.000	7.65

## Test Setup

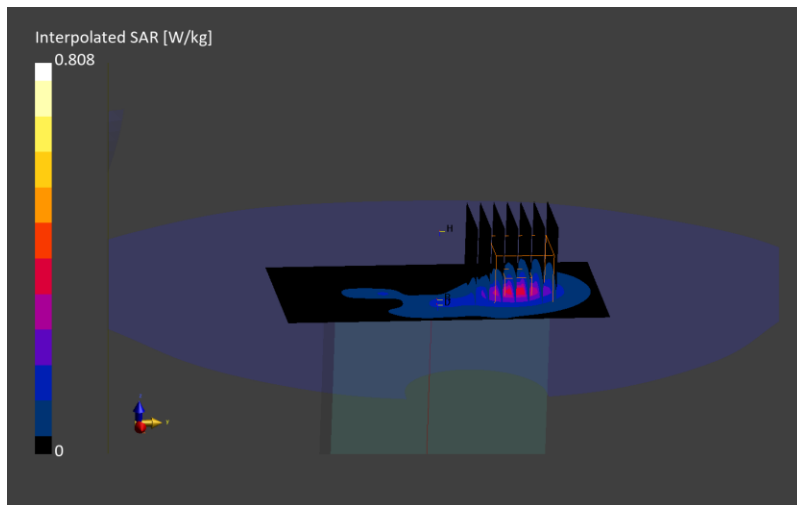
Test Date	Ambient Temp [°C]	TSL Temp [°C]	Measurement SW	Phantom	Type	Cond. [S/m]	TSL Perm.	Probe, Cal. Date	DAE, Cal. Date
2024-01-31	21.2	19.2	16.2.4.2524	Twin-SAM V8.0 - 2165	HSL	1.74	39.0	EX3DV4 - SN7859, 2023-12-19	DAE4ip Sn1844, 2023-11-02

## Scans Setup

	Area Scan	Zoom Scan
Grid Extents [mm]	60.0 x 120.0	30.0 x 30.0 x 30.0
Grid Steps [mm]	10.0 x 10.0	5.0 x 5.0 x 1.5
Sensor Surface [mm]	3.0	1.4
Grading Ratio	N/A	1.5
MAIA	Y	Y

## Measurement Results

psSAR10g [W/Kg]	0.133
Power Drift [dB]	0.07
Peak SAR (Extrapolated) [W/kg]	0.808
M2/M1 [%]	68.0
Dist 3dB Peak [mm]	7.7



# RF SAFETY LABORATORY

DUT: PY7-46195Y; SN: 0F1LA

## Test Conditions

Exposure Condition	Position, Test Distance [mm]	Band	Signal, UID	Ant.	Channel Number	Frequency [MHz]	ConvF (x,y,z)
Body	Flat, EDGE LEFT, 5.00	Band 41	LTE-TDD (SC-FDMA, 50% RB, 20 MHz, QPSK, UL Subframe=2,3,4,7,8,9) RBPosition:Mid AntennaCfg:SISO, 10494	Main2	Ch. 40185	2549.500	7.26

## Test Setup

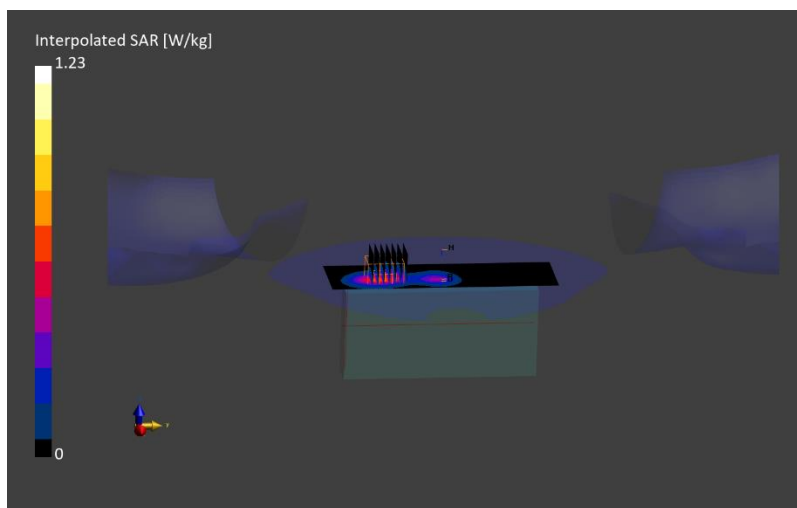
Test Date	Ambient Temp [°C]	TSL Temp [°C]	Measurement SW	Phantom	Type	Cond. [S/m]	TSL Perm.	Probe, Cal. Date	DAE, Cal. Date
2024-01-29	22.7	21.6	16.2.4.2524	Twin-SAM V8.0 - 2159	HSL	1.87	38.1	EX3DV4 - SN7836, 2023-10-11	DAE4ip Sn1839, 2023-10-09

## Scans Setup

	Area Scan	Zoom Scan
Grid Extents [mm]	60.0 x 200.0	30.0 x 30.0 x 30.0
Grid Steps [mm]	10.0 x 10.0	5.0 x 5.0 x 1.5
Sensor Surface [mm]	3.0	1.4
Grading Ratio	N/A	1.5
MAIA	Y	Y

## Measurement Results

psSAR1g [W/Kg]	0.615
Power Drift [dB]	0.03
Peak SAR (Extrapolated) [W/kg]	1.23
M2/M1 [%]	79.5
Dist 3dB Peak [mm]	11.2





# RF SAFETY LABORATORY

DUT: PY7-46195Y; SN: 0F1LA

## Test Conditions

Exposure Condition	Position, Test Distance [mm]	Band	Signal, UID	Ant.	Channel Number	Frequency [MHz]	ConvF (x,y,z)
Extremity	Flat, EDGE BOTTOM, 0.00	Band 41	LTE-TDD (SC-FDMA, 50% RB, 20 MHz, QPSK, UL Subframe=2,3,4,7,8,9) RBPosition:High AntennaCfg:SISO, 10494	Main2	Ch. 41490	2680.000	7.26

## Test Setup

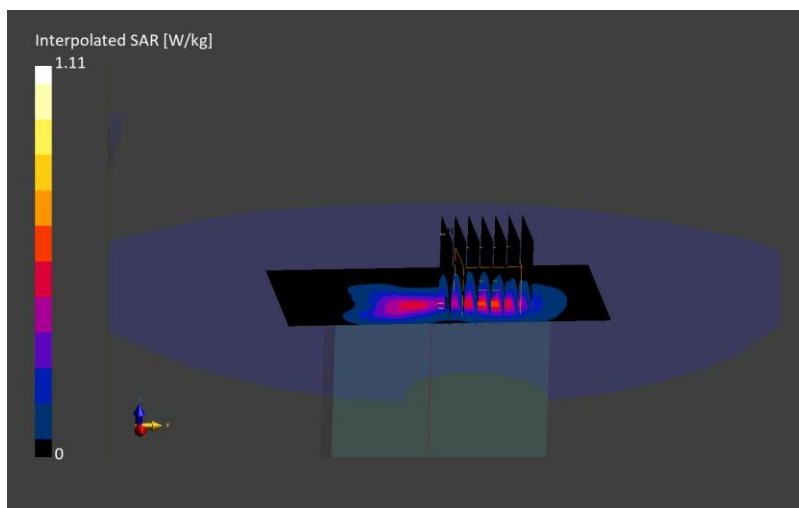
Test Date	Ambient Temp [°C]	TSL Temp [°C]	Measurement SW	Phantom	Type	Cond. [S/m]	TSL Perm.	Probe, Cal. Date	DAE, Cal. Date
2024-01-29	22.7	21.6	16.2.4.2524	Twin-SAM V8.0 - 2159	HSL	1.97	37.9	EX3DV4 - SN7836, 2023-10-11	DAE4ip Sn1839, 2023-10-09

## Scans Setup

	Area Scan	Zoom Scan
Grid Extents [mm]	60.0 x 120.0	30.0 x 30.0 x 30.0
Grid Steps [mm]	10.0 x 10.0	5.0 x 5.0 x 1.5
Sensor Surface [mm]	3.0	1.4
Grading Ratio	N/A	1.5
MAIA	Y	Y

## Measurement Results

psSAR10g [W/Kg]	0.211
Power Drift [dB]	-0.02
Peak SAR (Extrapolated) [W/kg]	1.11
M2/M1 [%]	77.5
Dist 3dB Peak [mm]	8.6



# RF SAFETY LABORATORY

DUT: PY7-46195Y; SN: 0F1LA

## Test Conditions

Exposure Condition	Position, Test Distance [mm]	Band	Signal, UID	Ant.	Channel Number	Frequency [MHz]	ConvF (x,y,z)
Body	Flat, EDGE BOTTOM, 5.00	Band 48	LTE-TDD (SC-FDMA, 50% RB, 20 MHz, QPSK, UL Subframe=2,3,4,7,8,9) RBPosition:Mid AntennaCfg:SISO, 10494	Main1	Ch. 56640	3690.000	6.54

## Test Setup

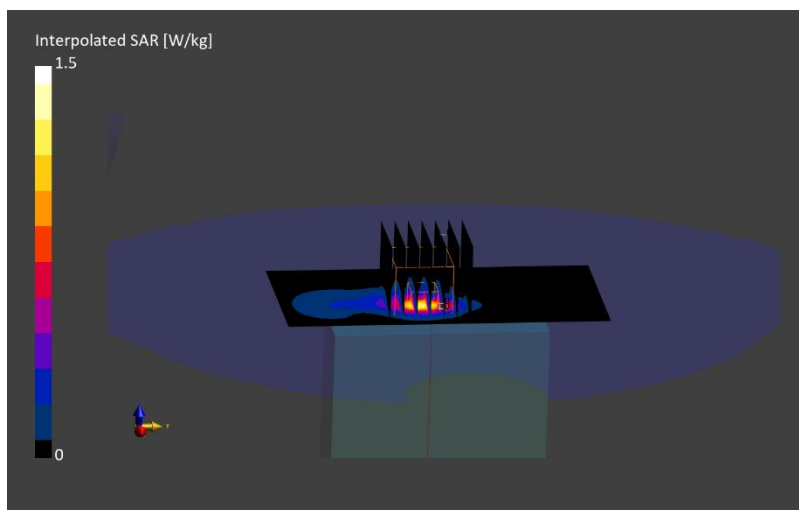
Test Date	Ambient Temp [°C]	TSL Temp [°C]	Measurement SW	Phantom	Type	Cond. [S/m]	TSL Perm.	Probe, Cal. Date	DAE, Cal. Date
2024-01-24	22.2	19.7	16.2.4.2524	Twin-SAM V8.0 - 2164	HSL	3.24	34.5	EX3DV4 - SN7857, 2023-12-19	DAE4ip Sn1843, 2023-11-02

## Scans Setup

	Area Scan	Zoom Scan
Grid Extents [mm]	60.0 x 120.0	28.0 x 28.0 x 28.0
Grid Steps [mm]	10.0 x 10.0	5.0 x 5.0 x 1.4
Sensor Surface [mm]	3.0	1.4
Grading Ratio	N/A	1.5
MAIA	Y	Y

## Measurement Results

psSAR1g [W/Kg]	0.9
Power Drift [dB]	-0.08
Peak SAR (Extrapolated) [W/kg]	2.93
M2/M1 [%]	68.4
Dist 3dB Peak [mm]	7.3



# RF SAFETY LABORATORY

DUT: PY7-46195Y; SN: 0F1LA

## Test Conditions

Exposure Condition	Position, Test Distance [mm]	Band	Signal, UID	Ant.	Channel Number	Frequency [MHz]	ConvF (x,y,z)
Extremity	Flat, EDGE BOTTOM, 0.00	Band 48	LTE-TDD (SC-FDMA, 50% RB, 20 MHz, QPSK, UL Subframe=2,3,4,7,8,9) RBPosition:Mid AntennaCfg:SISO, 10494	Main1	Ch. 56640	3690.000	6.54

## Test Setup

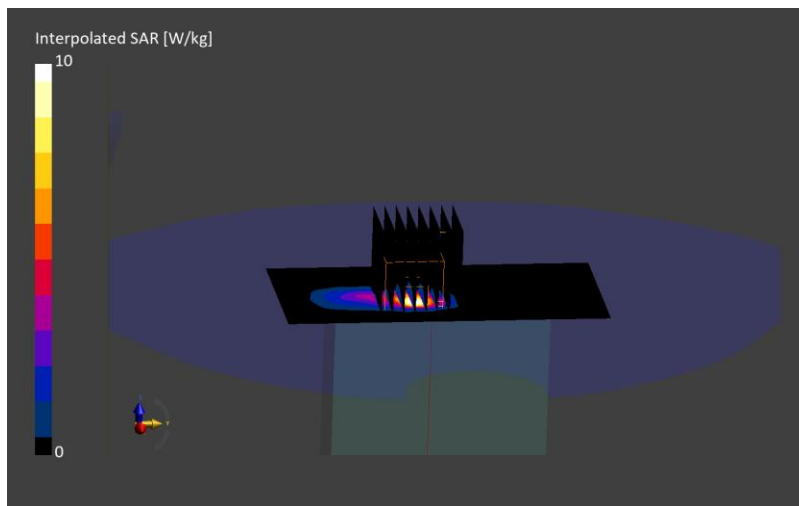
Test Date	Ambient Temp [°C]	TSL Temp [°C]	Measurement SW	Phantom	Type	Cond. [S/m]	TSL Perm.	Probe, Cal. Date	DAE, Cal. Date
2024-01-24	22.2	19.7	16.2.4.2524	Twin-SAM V8.0 - 2164	HSL	3.24	34.5	EX3DV4 - SN7857, 2023-12-19	DAE4ip Sn1843, 2023-11-02

## Scans Setup

	Area Scan	Zoom Scan
Grid Extents [mm]	60.0 x 120.0	28.0 x 28.0 x 28.0
Grid Steps [mm]	10.0 x 10.0	4.2 x 4.2 x 1.4
Sensor Surface [mm]	3.0	1.4
Grading Ratio	N/A	1.4
MAIA	Y	Y

## Measurement Results

psSAR10g [W/Kg]	0.719
Power Drift [dB]	-0.02
Peak SAR (Extrapolated) [W/kg]	10.0
M2/M1 [%]	64.9
Dist 3dB Peak [mm]	5.4



# RF SAFETY LABORATORY

DUT: PY7-46195Y; SN: 07SLA

## Test Conditions

Exposure Condition	Position, Test Distance [mm]	Band	Signal, UID	Ant.	Channel Number	Frequency [MHz]	ConvF (x,y,z)
Body	Flat, BACK, 0.00	Band n71	5G NR (DFT-s-OFDM, 50% RB, 20 MHz, QPSK, 15 kHz) RBPosition:Mid AntennaCfg:SISO, 10939	Main1	Ch. 136100	680.500	9.44

## Test Setup

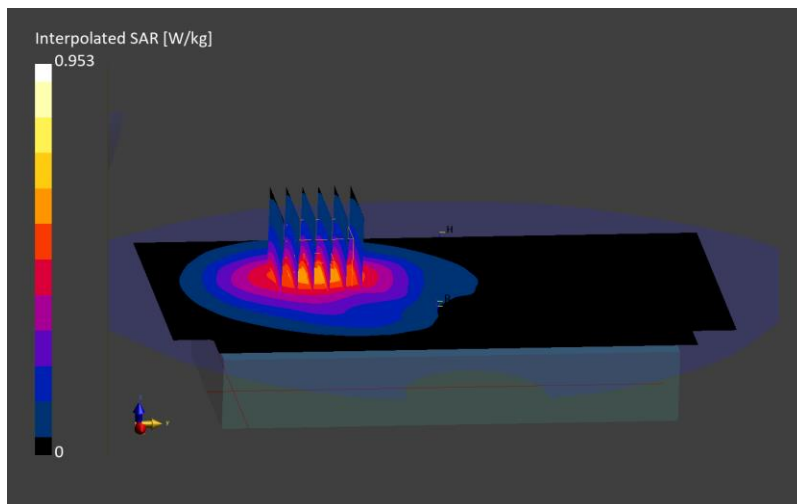
Test Date	Ambient Temp [°C]	TSL Temp [°C]	Measurement SW	Phantom	Type	Cond. [S/m]	TSL Perm.	Probe, Cal. Date	DAE, Cal. Date
2024-01-26	22.5	22.4	16.2.4.2524	Twin-SAM V8.0 - 2159	HSL	0.890	42.4	EX3DV4 - SN7836, 2023-10-11	DAE4ip Sn1839, 2023-10-09

## Scans Setup

	Area Scan	Zoom Scan
Grid Extents [mm]	120.0 x 210.0	30.0 x 30.0 x 30.0
Grid Steps [mm]	15.0 x 15.0	6.0 x 6.0 x 1.5
Sensor Surface [mm]	3.0	1.4
Grading Ratio	N/A	1.5
MAIA	Y	Y

## Measurement Results

psSAR1g [W/Kg]	0.583
Power Drift [dB]	0.01
Peak SAR (Extrapolated) [W/kg]	0.953
M2/M1 [%]	83.2
Dist 3dB Peak [mm]	> 15.0



# RF SAFETY LABORATORY

DUT: PY7-46195Y; SN: 07SLA

## Test Conditions

Exposure Condition	Position, Test Distance [mm]	Band	Signal, UID	Ant.	Channel Number	Frequency [MHz]	ConvF (x,y,z)
Extremity	Flat, EDGE BOTTOM, 0.00	Band n71	5G NR (DFT-s-OFDM, 50% RB, 20 MHz, QPSK, 15 kHz) RBPosition:Mid AntennaCfg:SISO, 10939	Main1	Ch. 136100	680.500	9.44

## Test Setup

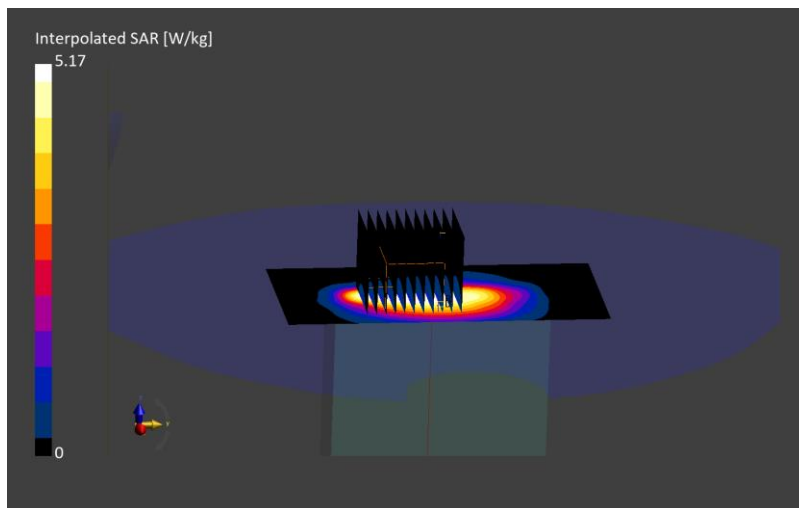
Test Date	Ambient Temp [°C]	TSL Temp [°C]	Measurement SW	Phantom	Type	Cond. [S/m]	TSL Perm.	Probe, Cal. Date	DAE, Cal. Date
2024-01-26	22.5	22.4	16.2.4.2524	Twin-SAM V8.0 - 2159	HSL	0.890	42.4	EX3DV4 - SN7836, 2023-10-11	DAE4ip Sn1839, 2023-10-09

## Scans Setup

	Area Scan	Zoom Scan
Grid Extents [mm]	60.0 x 120.0	31.5 x 31.5 x 30.0
Grid Steps [mm]	15.0 x 15.0	3.5 x 3.5 x 1.5
Sensor Surface [mm]	3.0	1.4
Grading Ratio	N/A	1.5
MAIA	Y	Y

## Measurement Results

psSAR10g [W/Kg]	0.567
Power Drift [dB]	0
Peak SAR (Extrapolated) [W/kg]	5.17
M2/M1 [%]	53.3
Dist 3dB Peak [mm]	5.0



# RF SAFETY LABORATORY

DUT: PY7-46195Y; SN: 07SLA

## Test Conditions

Exposure Condition	Position, Test Distance [mm]	Band	Signal, UID	Ant.	Channel Number	Frequency [MHz]	ConvF (x,y,z)
Body	Flat, FRONT, 5.00	Band n5	5G NR (DFT-s-OFDM, 1 RB, 20 MHz, QPSK, 15 kHz) RBPosition:Low AntennaCfg:SISO, 10931	Main1	Ch. 167300	836.500	9.24

## Test Setup

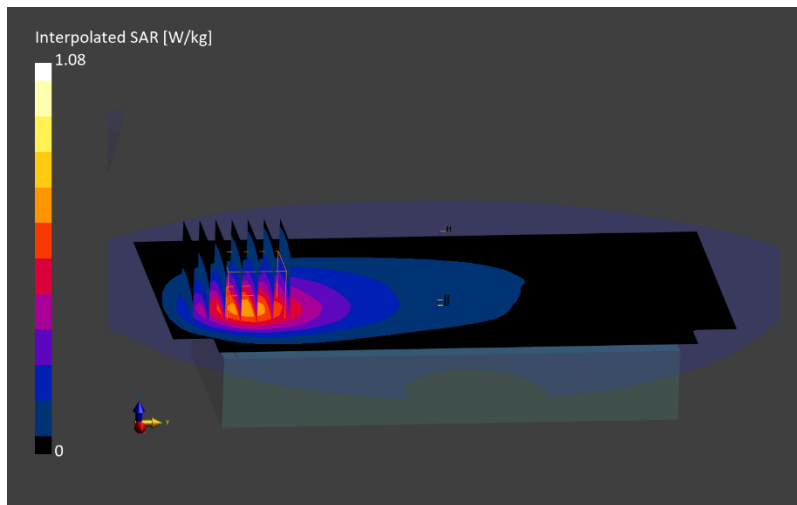
Test Date	Ambient Temp [°C]	TSL Temp [°C]	Measurement SW	Phantom	Type	Cond. [S/m]	TSL Perm.	Probe, Cal. Date	DAE, Cal. Date
2024-01-26	22.5	22.4	16.2.4.2524	Twinn-SAM V8.0 - 2159	HSL	0.944	41.9	EX3DV4 - SN7836, 2023-10-11	DAE4ip Sn1839, 2023-10-09

## Scans Setup

	Area Scan	Zoom Scan
Grid Extents [mm]	120.0 x 210.0	30.0 x 30.0 x 30.0
Grid Steps [mm]	15.0 x 15.0	6.0 x 6.0 x 1.5
Sensor Surface [mm]	3.0	1.4
Grading Ratio	N/A	1.5
MAIA	Y	Y

## Measurement Results

psSAR1g [W/Kg]	0.604
Power Drift [dB]	-0.01
Peak SAR (Extrapolated) [W/kg]	1.08
M2/M1 [%]	82.7
Dist 3dB Peak [mm]	11.4



# RF SAFETY LABORATORY

DUT: PY7-46195Y; SN: 07SLA

## Test Conditions

Exposure Condition	Position, Test Distance [mm]	Band	Signal, UID	Ant.	Channel Number	Frequency [MHz]	ConvF (x,y,z)
Extremity	Flat, EDGE BOTTOM, 0.00	Band n5	5G NR (DFT-s-OFDM, 50% RB, 20 MHz, QPSK, 15 kHz) RBPosition:Low AntennaCfg:SISO, 10939	Main1	Ch. 167300	836.500	9.24

## Test Setup

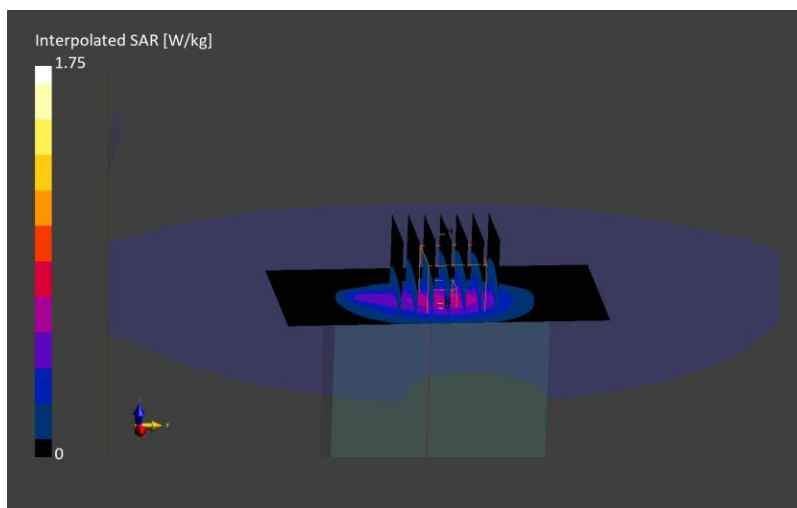
Test Date	Ambient Temp [°C]	TSL Temp [°C]	Measurement SW	Phantom	Type	Cond. [S/m]	TSL Perm.	Probe, Cal. Date	DAE, Cal. Date
2024-01-26	22.5	22.4	16.2.4.2524	Twin-SAM V8.0 - 2159	HSL	0.944	41.9	EX3DV4 - SN7836, 2023-10-11	DAE4ip Sn1839, 2023-10-09

## Scans Setup

	Area Scan	Zoom Scan
Grid Extents [mm]	60.0 x 120.0	30.0 x 30.0 x 30.0
Grid Steps [mm]	15.0 x 15.0	6.0 x 6.0 x 1.5
Sensor Surface [mm]	3.0	1.4
Grading Ratio	N/A	1.5
MAIA	Y	Y

## Measurement Results

psSAR10g [W/Kg]	0.375
Power Drift [dB]	0.02
Peak SAR (Extrapolated) [W/kg]	1.75
M2/M1 [%]	68.9
Dist 3dB Peak [mm]	8.4



# RF SAFETY LABORATORY

DUT: PY7-46195Y; SN: 08GLA

## Test Conditions

Exposure Condition	Position, Test Distance [mm]	Band	Signal, UID	Ant.	Channel Number	Frequency [MHz]	ConvF (x,y,z)
Body	Flat, FRONT, 5.00	Band n66	5G NR (DFT-s-OFDM, 1 RB, 20 MHz, QPSK, 15 kHz) RBPosition:Mid AntennaCfg:SISO, 10931	Main2	Ch. 354000	1770.000	8.34

## Test Setup

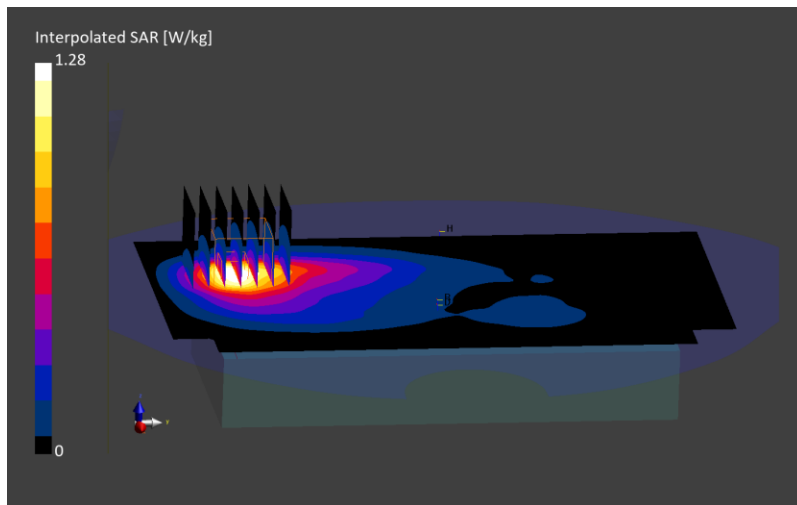
Test Date	Ambient Temp [°C]	TSL Temp [°C]	Measurement SW	Phantom	Type	Cond. [S/m]	TSL Perm.	Probe, Cal. Date	DAE, Cal. Date
2024-01-30	22.1	20.4	16.2.4.2524	Twinn-SAM V8.0 - 2165	HSL	1.40	40.1	EX3DV4 - SN7859, 2023-12-19	DAE4ip Sn1844, 2023-11-02

## Scans Setup

	Area Scan	Zoom Scan
Grid Extents [mm]	120.0 x 210.0	30.0 x 30.0 x 30.0
Grid Steps [mm]	15.0 x 15.0	6.0 x 6.0 x 1.5
Sensor Surface [mm]	3.0	1.4
Grading Ratio	N/A	1.5
MAIA	Y	Y

## Measurement Results

psSAR1g [W/Kg]	0.686
Power Drift [dB]	0.01
Peak SAR (Extrapolated) [W/kg]	1.28
M2/M1 [%]	81.1
Dist 3dB Peak [mm]	12.0





# RF SAFETY LABORATORY

DUT: PY7-46195Y; SN: 08GLA

## Test Conditions

Exposure Condition	Position, Test Distance [mm]	Band	Signal, UID	Ant.	Channel Number	Frequency [MHz]	ConvF (x,y,z)
Extremity	Flat, EDGE BOTTOM, 0.00	Band n66	5G NR (DFT-s-OFDM, 50% RB, 20 MHz, QPSK, 15 kHz) RBPosition:Mid AntennaCfg:SISO, 10939	Main2	Ch. 344000	1720.000	8.34

## Test Setup

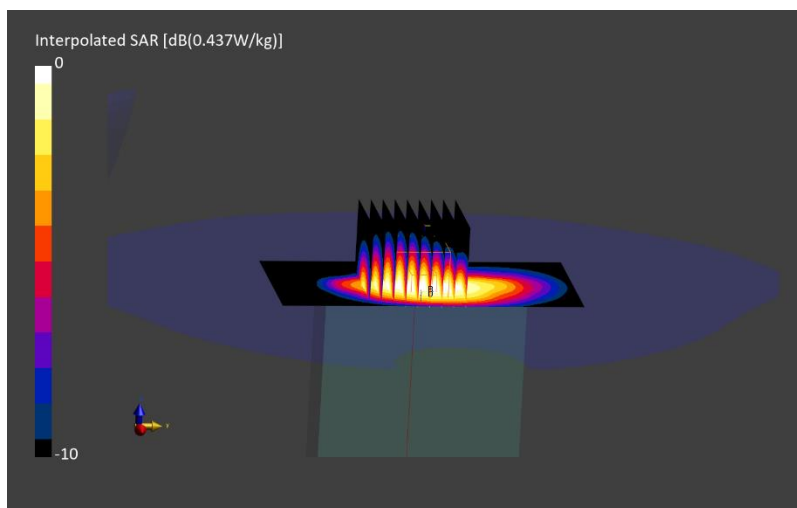
Test Date	Ambient Temp [°C]	TSL Temp [°C]	Measurement SW	Phantom	Type	Cond. [S/m]	TSL Perm.	Probe, Cal. Date	DAE, Cal. Date
2024-01-30	22.1	20.4	16.2.4.2524	Twin-SAM V8.0 - 2165	HSL	1.37	40.2	EX3DV4 - SN7859, 2023-12-19	DAE4ip Sn1844, 2023-11-02

## Scans Setup

	Area Scan	Zoom Scan
Grid Extents [mm]	60.0 x 120.0	33.6 x 33.6 x 30.0
Grid Steps [mm]	15.0 x 15.0	4.8 x 4.8 x 1.5
Sensor Surface [mm]	3.0	1.4
Grading Ratio	N/A	1.5
MAIA	Y	Y

## Measurement Results

psSAR10g [W/Kg]	0.183
Power Drift [dB]	0.03
Peak SAR (Extrapolated) [W/kg]	1.09
M2/M1 [%]	66.1
Dist 3dB Peak [mm]	6.8



# RF SAFETY LABORATORY

DUT: PY7-46195Y; SN: 07SLA

## Test Conditions

Exposure Condition	Position, Test Distance [mm]	Band	Signal, UID	Ant.	Channel Number	Frequency [MHz]	ConvF (x,y,z)
Body	Flat, FRONT, 5.00	Band n25	5G NR (DFT-s-OFDM, 50% RB, 20 MHz, QPSK, 15 kHz) RBPosition:Mid AntennaCfg:SISO, 10939	Main2	Ch. 381000	1905.000	8.26

## Test Setup

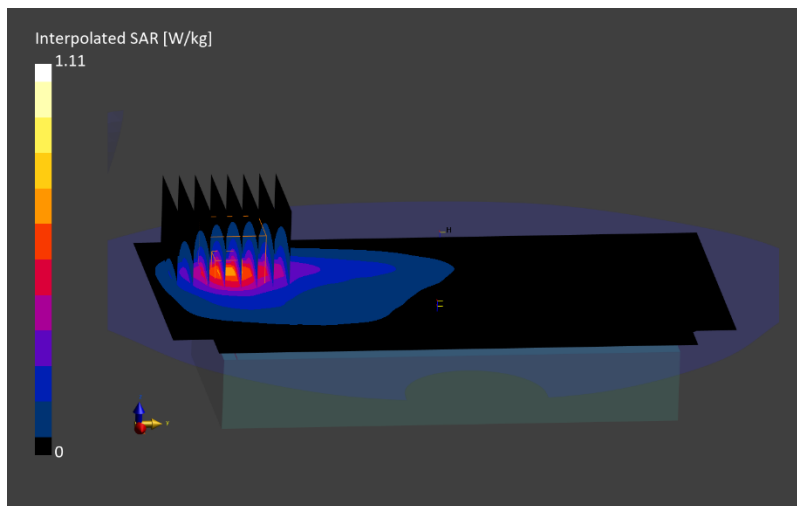
Test Date	Ambient Temp [°C]	TSL Temp [°C]	Measurement SW	Phantom	Type	Cond. [S/m]	TSL Perm.	Probe, Cal. Date	DAE, Cal. Date
2024-02-02	22.9	22	16.2.4.2524	Twin-SAM V8.0 - 2159	HSL	1.44	40.0	EX3DV4 - SN7836, 2023-10-11	DAE4ip Sn1839, 2023-10-09

## Scans Setup

	Area Scan	Zoom Scan
Grid Extents [mm]	120.0 x 210.0	30.0 x 30.0 x 30.0
Grid Steps [mm]	15.0 x 15.0	6.0 x 6.0 x 1.5
Sensor Surface [mm]	3.0	1.4
Grading Ratio	N/A	1.5
MAIA	Y	Y

## Measurement Results

psSAR1g [W/Kg]	0.556
Power Drift [dB]	-0.02
Peak SAR (Extrapolated) [W/kg]	1.11
M2/M1 [%]	80.4
Dist 3dB Peak [mm]	12.4



# RF SAFETY LABORATORY

DUT: PY7-46195Y; SN: 07SLA

## Test Conditions

Exposure Condition	Position, Test Distance [mm]	Band	Signal, UID	Ant.	Channel Number	Frequency [MHz]	ConvF (x,y,z)
Extremity	Flat, EDGE BOTTOM, 0.00	Band n25	5G NR (DFT-s-OFDM, 1 RB, 20 MHz, QPSK, 15 kHz) RBPosition:Mid AntennaCfg:SISO, 10931	Main2	Ch. 381000	1905.000	8.26

## Test Setup

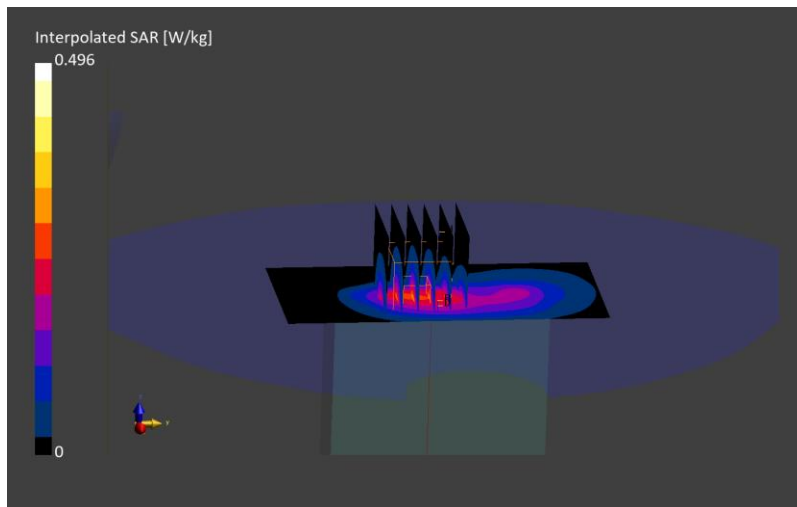
Test Date	Ambient Temp [°C]	TSL Temp [°C]	Measurement SW	Phantom	Type	Cond. [S/m]	TSL Perm.	Probe, Cal. Date	DAE, Cal. Date
2024-02-02	22.9	22	16.2.4.2524	Twin-SAM V8.0 - 2159	HSL	1.44	40.0	EX3DV4 - SN7836, 2023-10-11	DAE4ip Sn1839, 2023-10-09

## Scans Setup

	Area Scan	Zoom Scan
Grid Extents [mm]	60.0 x 120.0	30.0 x 30.0 x 30.0
Grid Steps [mm]	15.0 x 15.0	6.0 x 6.0 x 1.5
Sensor Surface [mm]	3.0	1.4
Grading Ratio	N/A	1.5
MAIA	Y	Y

## Measurement Results

psSAR10g [W/Kg]	0.137
Power Drift [dB]	0.02
Peak SAR (Extrapolated) [W/kg]	0.496
M2/M1 [%]	81.5
Dist 3dB Peak [mm]	8.4



# RF SAFETY LABORATORY

DUT: PY7-46195Y; SN: 08GLA

## Test Conditions

Exposure Condition	Position, Test Distance [mm]	Band	Signal, UID	Ant.	Channel Number	Frequency [MHz]	ConvF (x,y,z)
Body	Flat, BACK, 0.00	Band n30	5G NR (DFT-s-OFDM, 1 RB, 10 MHz, QPSK, 15 kHz) RBPosition:Low AntennaCfg:SISO, 10929	Main2	Ch. 462000	2310.000	7.65

## Test Setup

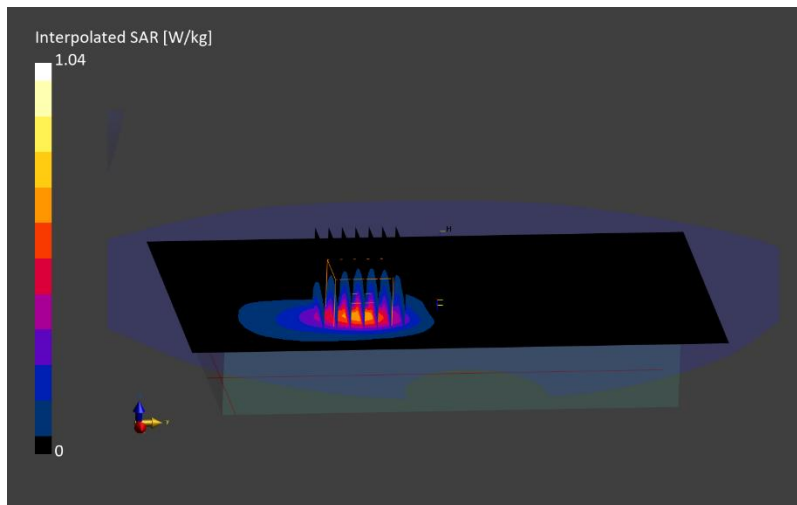
Test Date	Ambient Temp [°C]	TSL Temp [°C]	Measurement SW	Phantom	Type	Cond. [S/m]	TSL Perm.	Probe, Cal. Date	DAE, Cal. Date
2024-01-31	21.2	19.2	16.2.4.2524	Twinn-SAM V8.0 - 2165	HSL	1.74	39.0	EX3DV4 - SN7859, 2023-12-19	DAE4ip Sn1844, 2023-11-02

## Scans Setup

	Area Scan	Zoom Scan
Grid Extents [mm]	120.0 x 200.0	30.0 x 30.0 x 30.0
Grid Steps [mm]	10.0 x 10.0	5.0 x 5.0 x 1.5
Sensor Surface [mm]	3.0	1.4
Grading Ratio	N/A	1.5
MAIA	Y	Y

## Measurement Results

psSAR1g [W/Kg]	0.565
Power Drift [dB]	0.12
Peak SAR (Extrapolated) [W/kg]	1.04
M2/M1 [%]	82.3
Dist 3dB Peak [mm]	13.0



# RF SAFETY LABORATORY

DUT: PY7-46195Y; SN: 08GLA

## Test Conditions

Exposure Condition	Position, Test Distance [mm]	Band	Signal, UID	Ant.	Channel Number	Frequency [MHz]	ConvF (x,y,z)
Extremity	Flat, EDGE BOTTOM, 0.00	Band n30	5G NR (DFT-s-OFDM, 50% RB, 10 MHz, QPSK, 15 kHz) RBPosition:Mid AntennaCfg:SISO, 10937	Main2	Ch. 462000	2310.000	7.65

## Test Setup

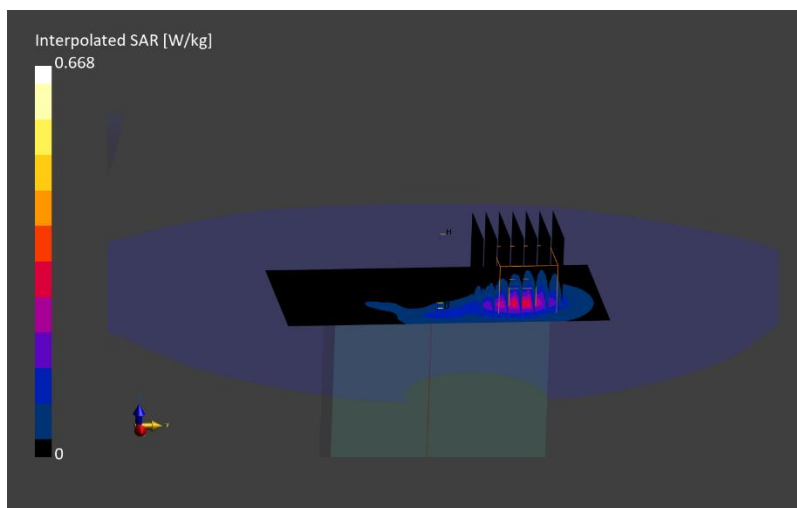
Test Date	Ambient Temp [°C]	TSL Temp [°C]	Measurement SW	Phantom	Type	Cond. [S/m]	TSL Perm.	Probe, Cal. Date	DAE, Cal. Date
2024-01-31	21.2	19.2	16.2.4.2524	Twin-SAM V8.0 - 2165	HSL	1.74	39.0	EX3DV4 - SN7859, 2023-12-19	DAE4ip Sn1844, 2023-11-02

## Scans Setup

	Area Scan	Zoom Scan
Grid Extents [mm]	60.0 x 120.0	30.0 x 30.0 x 30.0
Grid Steps [mm]	10.0 x 10.0	5.0 x 5.0 x 1.5
Sensor Surface [mm]	3.0	1.4
Grading Ratio	N/A	1.5
MAIA	Y	Y

## Measurement Results

psSAR10g [W/Kg]	0.111
Power Drift [dB]	0.11
Peak SAR (Extrapolated) [W/kg]	0.668
M2/M1 [%]	67.8
Dist 3dB Peak [mm]	7.3



# RF SAFETY LABORATORY

DUT: PY7-46195Y; SN: 036LA

## Test Conditions

Exposure Condition	Position, Test Distance [mm]	Band	Signal, UID	Ant.	Channel Number	Frequency [MHz]	ConvF (x,y,z)
Body	Flat, EDGE TOP, 5.00	Band n41	5G NR (CP-OFDM, 100% RB, 100 MHz, QPSK, 30 kHz) AntennaCfg:SISO, 10829	Sub	Ch. 518598	2592.990	7.26

## Test Setup

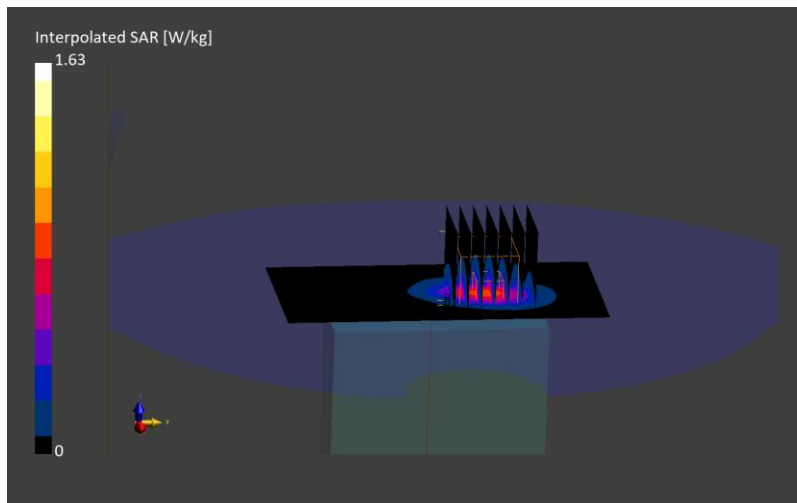
Test Date	Ambient Temp [°C]	TSL Temp [°C]	Measurement SW	Phantom	Type	Cond. [S/m]	TSL Perm.	Probe, Cal. Date	DAE, Cal. Date
2024-01-31	21.3	20.5	16.2.4.2524	Twin-SAM V8.0 - 2159	HSL	1.95	39.3	EX3DV4 - SN7836, 2023-10-11	DAE4ip Sn1839, 2023-10-09

## Scans Setup

	Area Scan	Zoom Scan
Grid Extents [mm]	60.0 x 120.0	30.0 x 30.0 x 30.0
Grid Steps [mm]	10.0 x 10.0	5.0 x 5.0 x 1.5
Sensor Surface [mm]	3.0	1.4
Grading Ratio	N/A	1.5
MAIA	Y	Y

## Measurement Results

psSAR1g [W/Kg]	0.753
Power Drift [dB]	-0.05
Peak SAR (Extrapolated) [W/kg]	1.63
M2/M1 [%]	78.5
Dist 3dB Peak [mm]	8.0



# RF SAFETY LABORATORY

DUT: PY7-46195Y; SN: 07SLA

## Test Conditions

Exposure Condition	Position, Test Distance [mm]	Band	Signal, UID	Ant.	Channel Number	Frequency [MHz]	ConvF (x,y,z)
Extremity	Flat, EDGE BOTTOM, 0.00	Band n41	5G NR (DFT-s-OFDM, 50% RB, 100 MHz, QPSK, 30 kHz) RBPosition:High AntennaCfg:SISO, 10917	Main2	Ch. 518598	2592.990	7.26

## Test Setup

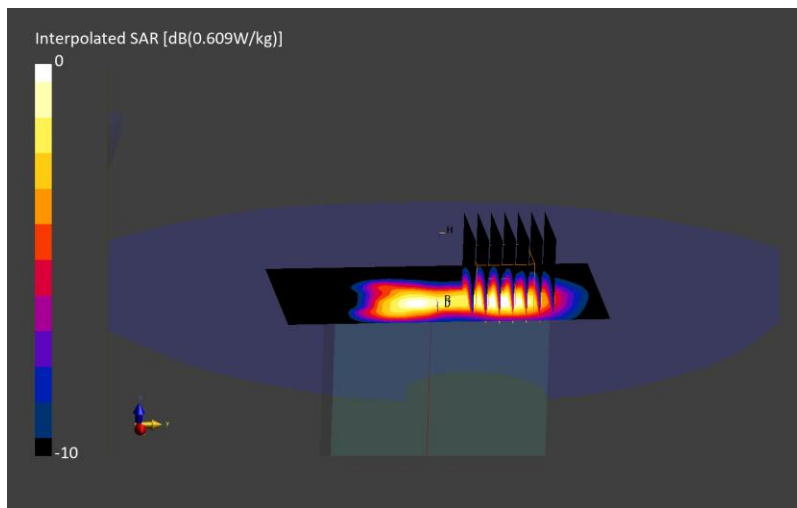
Test Date	Ambient Temp [°C]	TSL Temp [°C]	Measurement SW	Phantom	Type	Cond. [S/m]	TSL Perm.	Probe, Cal. Date	DAE, Cal. Date
2024-01-29	22.7	21.6	16.2.4.2524	Twin-SAM V8.0 - 2159	HSL	1.91	38.1	EX3DV4 - SN7836, 2023-10-11	DAE4ip Sn1839, 2023-10-09

## Scans Setup

	Area Scan	Zoom Scan
Grid Extents [mm]	60.0 x 120.0	30.0 x 30.0 x 30.0
Grid Steps [mm]	10.0 x 10.0	5.0 x 5.0 x 1.5
Sensor Surface [mm]	3.0	1.4
Grading Ratio	N/A	1.5
MAIA	Y	Y

## Measurement Results

psSAR10g [W/Kg]	0.215
Power Drift [dB]	0.01
Peak SAR (Extrapolated) [W/kg]	1.20
M2/M1 [%]	66.3
Dist 3dB Peak [mm]	7.3



# RF SAFETY LABORATORY

DUT: PY7-46195Y; SN: 08GLA

## Test Conditions

Exposure Condition	Position, Test Distance [mm]	Band	Signal, UID	Ant.	Channel Number	Frequency [MHz]	ConvF (x,y,z)
Body	Flat, EDGE BOTTOM, 5.00	Band n48	5G NR (DFT-s-OFDM, 1 RB, 40 MHz, QPSK, 30 kHz) RBPosition:High AntennaCfg:SISO, 10903	Main1	Ch. 645332	3679.975	6.54

## Test Setup

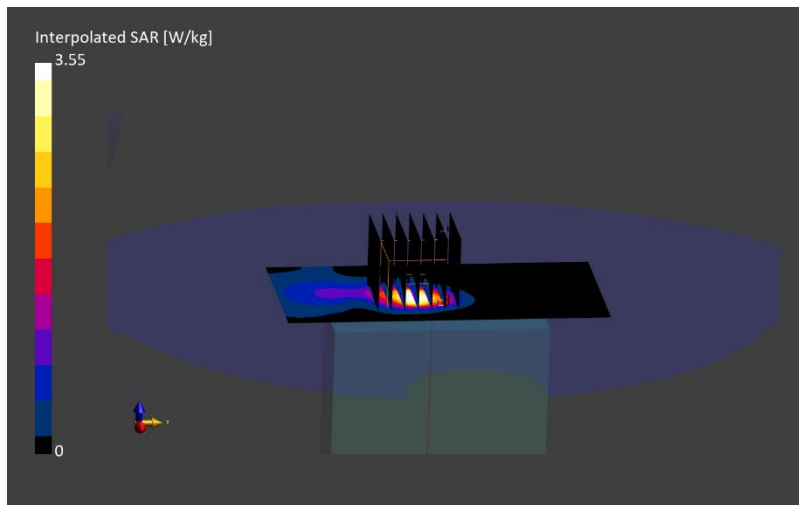
Test Date	Ambient Temp [°C]	TSL Temp [°C]	Measurement SW	Phantom	Type	Cond. [S/m]	TSL Perm.	Probe, Cal. Date	DAE, Cal. Date
2024-01-26	23.5	21.1	16.2.4.2524	Twin-SAM V8.0 - 2164	HSL	3.26	34.9	EX3DV4 - SN7857, 2023-12-19	DAE4ip Sn1843, 2023-11-02

## Scans Setup

	Area Scan	Zoom Scan
Grid Extents [mm]	60.0 x 120.0	30.0 x 30.0 x 28.0
Grid Steps [mm]	10.0 x 10.0	5.0 x 5.0 x 1.4
Sensor Surface [mm]	3.0	1.4
Grading Ratio	N/A	1.5
MAIA	Y	Y

## Measurement Results

psSAR1g [W/Kg]	0.946
Power Drift [dB]	0
Peak SAR (Extrapolated) [W/kg]	3.55
M2/M1 [%]	68.6
Dist 3dB Peak [mm]	7.7





# RF SAFETY LABORATORY

DUT: PY7-46195Y; SN: 08GLA

## Test Conditions

Exposure Condition	Position, Test Distance [mm]	Band	Signal, UID	Ant.	Channel Number	Frequency [MHz]	ConvF (x,y,z)
Extremity	Flat, EDGE BOTTOM, 0.00	Band n48	5G NR (DFT-s-OFDM, 1 RB, 40 MHz, QPSK, 30 kHz) RBPosition:High AntennaCfg:SISO, 10903	Main1	Ch. 638000	3569.995	6.57

## Test Setup

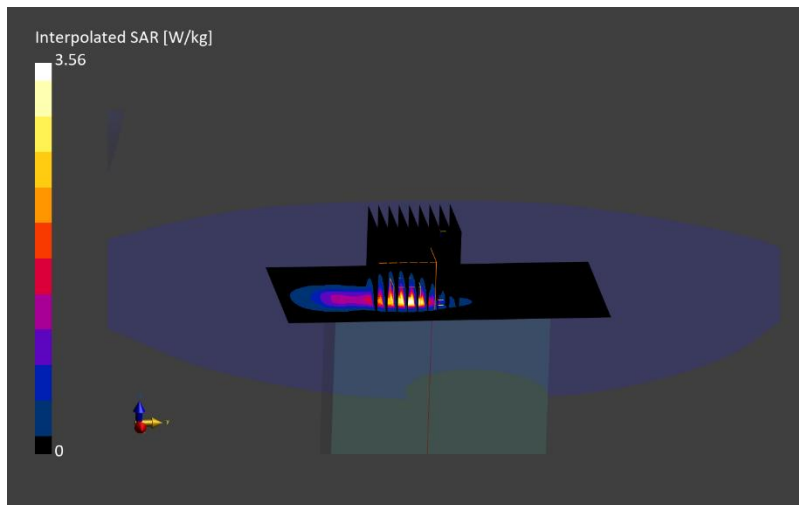
Test Date	Ambient Temp [°C]	TSL Temp [°C]	Measurement SW	Phantom	Type	Cond. [S/m]	TSL Perm.	Probe, Cal. Date	DAE, Cal. Date
2024-01-26	23.5	21.1	16.2.4.2524	Twin-SAM V8.0 - 2164	HSL	3.14	35.2	EX3DV4 - SN7857, 2023-12-19	DAE4ip Sn1843, 2023-11-02

## Scans Setup

	Area Scan	Zoom Scan
Grid Extents [mm]	60.0 x 120.0	28.0 x 28.0 x 28.0
Grid Steps [mm]	10.0 x 10.0	3.8 x 3.8 x 1.4
Sensor Surface [mm]	3.0	1.4
Grading Ratio	N/A	1.4
MAIA	Y	Y

## Measurement Results

psSAR10g [W/Kg]	0.626
Power Drift [dB]	-0.02
Peak SAR (Extrapolated) [W/kg]	9.43
M2/M1 [%]	67.3
Dist 3dB Peak [mm]	5.1



# RF SAFETY LABORATORY

DUT: PY7-46195Y; SN: 08GLA

## Test Conditions

Exposure Condition	Position, Test Distance [mm]	Band	Signal, UID	Ant.	Channel Number	Frequency [MHz]	ConvF (x,y,z)
Body	Flat, EDGE BOTTOM, 5.00	Band n77	5G NR (DFT-s-OFDM, 100% RB, 100 MHz, QPSK, 30 kHz) AntennaCfg:SISO, 10868	Main1	Ch. 662000	3930.000	6.15

## Test Setup

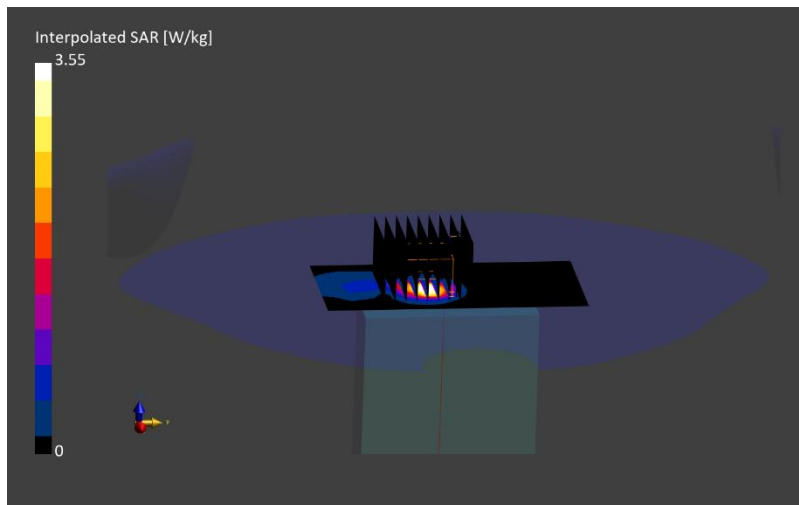
Test Date	Ambient Temp [°C]	TSL Temp [°C]	Measurement SW	Phantom	Type	Cond. [S/m]	TSL Perm.	Probe, Cal. Date	DAE, Cal. Date
2024-01-29	22.9	21.9	16.2.4.2524	Twin-SAM V8.0 - 2164	HSL	3.55	34.7	EX3DV4 - SN7857, 2023-12-19	DAE4ip Sn1843, 2023-11-02

## Scans Setup

	Area Scan	Zoom Scan
Grid Extents [mm]	60.0 x 120.0	30.0 x 30.0 x 28.0
Grid Steps [mm]	10.0 x 10.0	5.0 x 5.0 x 1.4
Sensor Surface [mm]	3.0	1.4
Grading Ratio	N/A	1.5
MAIA	Y	Y

## Measurement Results

psSAR1g [W/Kg]	0.829
Power Drift [dB]	-0.08
Peak SAR (Extrapolated) [W/kg]	3.55
M2/M1 [%]	67.9
Dist 3dB Peak [mm]	7.7



# RF SAFETY LABORATORY

DUT: PY7-46195Y; SN: 08GLA

## Test Conditions

Exposure Condition	Position, Test Distance [mm]	Band	Signal, UID	Ant.	Channel Number	Frequency [MHz]	ConvF (x,y,z)
Extremity	Flat, EDGE BOTTOM, 0.00	Band n77	5G NR (DFT-s-OFDM, 1 RB, 100 MHz, QPSK, 30 kHz) RBPosition:Mid AntennaCfg:SISO, 10866	Main1	Ch. 662000	3930.000	6.15

## Test Setup

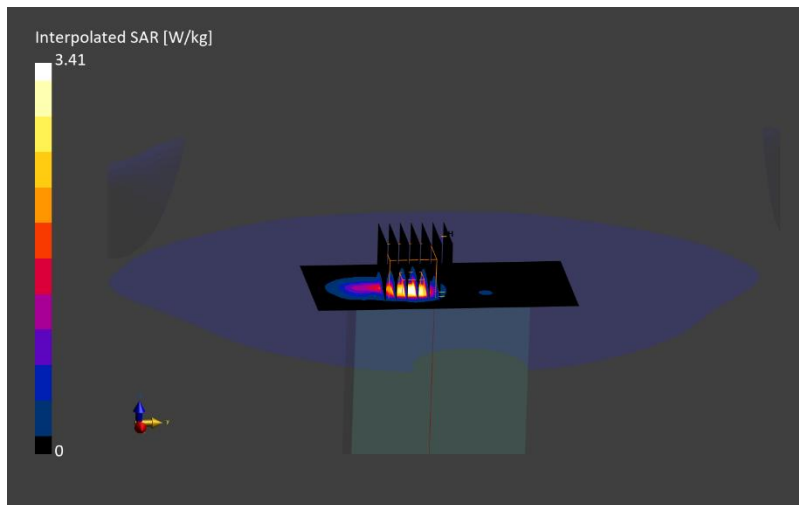
Test Date	Ambient Temp [°C]	TSL Temp [°C]	Measurement SW	Phantom	Type	Cond. [S/m]	TSL Perm.	Probe, Cal. Date	DAE, Cal. Date
2024-01-29	22.9	21.9	16.2.4.2524	Twin-SAM V8.0 - 2164	HSL	3.55	34.7	EX3DV4 - SN7857, 2023-12-19	DAE4ip Sn1843, 2023-11-02

## Scans Setup

	Area Scan	Zoom Scan
Grid Extents [mm]	60.0 x 120.0	28.0 x 28.0 x 28.0
Grid Steps [mm]	10.0 x 10.0	5.0 x 5.0 x 1.4
Sensor Surface [mm]	3.0	1.4
Grading Ratio	N/A	1.5
MAIA	Y	Y

## Measurement Results

psSAR10g [W/Kg]	0.674
Power Drift [dB]	-0.03
Peak SAR (Extrapolated) [W/kg]	11.0
M2/M1 [%]	67.3
Dist 3dB Peak [mm]	6.0



# RF SAFETY LABORATORY

DUT: PY7-46195Y; SN: 021LA

## Test Conditions

Exposure Condition	Position, Test Distance [mm]	Band	Signal, UID	Ant.	Channel Number	Frequency [MHz]	ConvF (x,y,z)
Body	Flat, BACK, 0.00	WLAN 2.4GHz	IEEE 802.11n (HT Mixed, 6.5 Mbps, BPSK), 10196	MIMO	Ch. 11	2462.000	7.09

## Test Setup

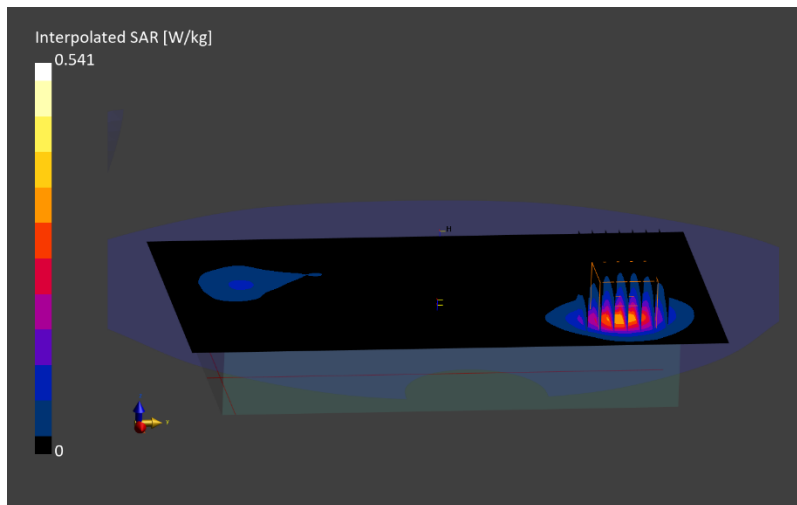
Test Date	Ambient Temp [°C]	TSL Temp [°C]	Measurement SW	Phantom	Type	Cond. [S/m]	TSL Perm.	Probe, Cal. Date	DAE, Cal. Date
2024-01-24	22.1	20.1	16.2.4.2524	Twinn-SAM V8.0 - 2165	HSL	1.89	39.9	EX3DV4 - SN7853, 2023-11-14	DAE4ip Sn1844, 2023-11-02

## Scans Setup

	Area Scan	Zoom Scan
Grid Extents [mm]	120.0 x 200.0	30.0 x 30.0 x 30.0
Grid Steps [mm]	10.0 x 10.0	5.0 x 5.0 x 1.5
Sensor Surface [mm]	3.0	1.4
Grading Ratio	N/A	1.5
MAIA	Y	Y

## Measurement Results

psSAR1g [W/Kg]	0.284
Power Drift [dB]	-0.03
Peak SAR (Extrapolated) [W/kg]	0.541
M2/M1 [%]	81.9
Dist 3dB Peak [mm]	11.4



# RF SAFETY LABORATORY

DUT: PY7-46195Y; SN: 021LA

## Test Conditions

Exposure Condition	Position, Test Distance [mm]	Band	Signal, UID	Ant.	Channel Number	Frequency [MHz]	ConvF (x,y,z)
Extremity	Flat, EDGE BOTTOM, 0.00	WLAN 2.4GHz	IEEE 802.11n (HT Greenfield, 6.5 Mbps, BPSK), 10196	MIMO	Ch. 11	2462.000	7.09

## Test Setup

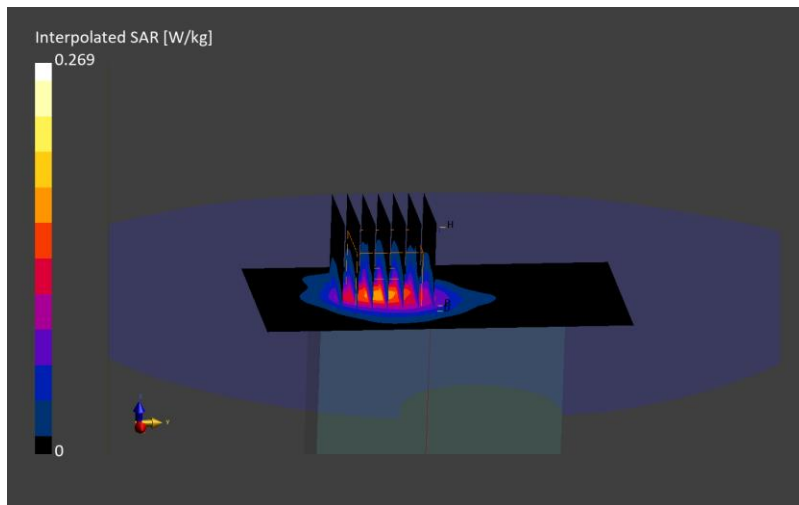
Test Date	Ambient Temp [°C]	TSL Temp [°C]	Measurement SW	Phantom	Type	Cond. [S/m]	TSL Perm.	Probe, Cal. Date	DAE, Cal. Date
2024-01-24	22.1	20.1	16.2.4.2524	Twin-SAM V8.0 - 2165	HSL	1.89	39.9	EX3DV4 - SN7853, 2023-11-14	DAE4ip Sn1844, 2023-11-02

## Scans Setup

	Area Scan	Zoom Scan
Grid Extents [mm]	60.0 x 120.0	30.0 x 30.0 x 30.0
Grid Steps [mm]	10.0 x 10.0	5.0 x 5.0 x 1.5
Sensor Surface [mm]	3.0	1.4
Grading Ratio	N/A	1.5
MAIA	Y	Y

## Measurement Results

psSAR10g [W/Kg]	0.069
Power Drift [dB]	0.03
Peak SAR (Extrapolated) [W/kg]	0.269
M2/M1 [%]	80.0
Dist 3dB Peak [mm]	10.8



# RF SAFETY LABORATORY

DUT: PY7-46195Y; SN: 021LA

## Test Conditions

Exposure Condition	Position, Test Distance [mm]	Band	Signal, UID	Ant.	Channel Number	Frequency [MHz]	ConvF (x,y,z)
Body	Flat, EDGE LEFT, 5.00	WLAN 5 GHz U-NII-2C	IEEE 802.11ac WiFi (80MHz, MCS0, 99pc duty cycle), 10544	MIMO	Ch. 138	5690.000	4.64

## Test Setup

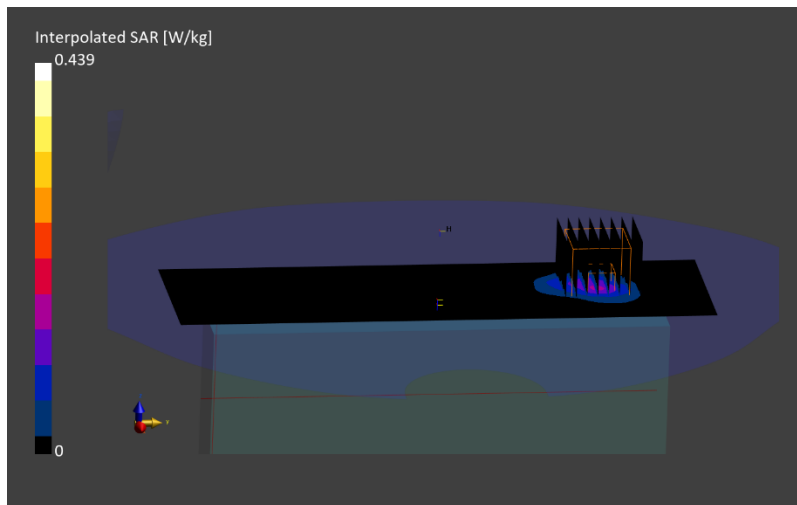
Test Date	Ambient Temp [°C]	TSL Temp [°C]	Measurement SW	Phantom	Type	Cond. [S/m]	TSL Perm.	Probe, Cal. Date	DAE, Cal. Date
2024-01-24	22.1	20.1	16.2.4.2524	Twin-SAM V8.0 - 2165	HSL	5.11	33.9	EX3DV4 - SN7853, 2023-11-14	DAE4ip Sn1844, 2023-11-02

## Scans Setup

	Area Scan	Zoom Scan
Grid Extents [mm]	60.0 x 200.0	22.0 x 22.0 x 22.0
Grid Steps [mm]	10.0 x 10.0	4.0 x 4.0 x 1.4
Sensor Surface [mm]	3.0	1.4
Grading Ratio	N/A	1.4
MAIA	Y	Y

## Measurement Results

psSAR1g [W/Kg]	0.113
Power Drift [dB]	0.02
Peak SAR (Extrapolated) [W/kg]	0.439
M2/M1 [%]	59.2
Dist 3dB Peak [mm]	9.0



# RF SAFETY LABORATORY

DUT: PY7-46195Y; SN: 021LA

## Test Conditions

Exposure Condition	Position, Test Distance [mm]	Band	Signal, UID	Ant.	Channel Number	Frequency [MHz]	ConvF (x,y,z)
Extremity	Flat, EDGE BOTTOM, 0.00	WLAN 5GHz U-NII-3	IEEE 802.11ac WiFi (80MHz, MCS0, 99pc duty cycle), 10544	MIMO	Ch. 155	5775.000	4.64

## Test Setup

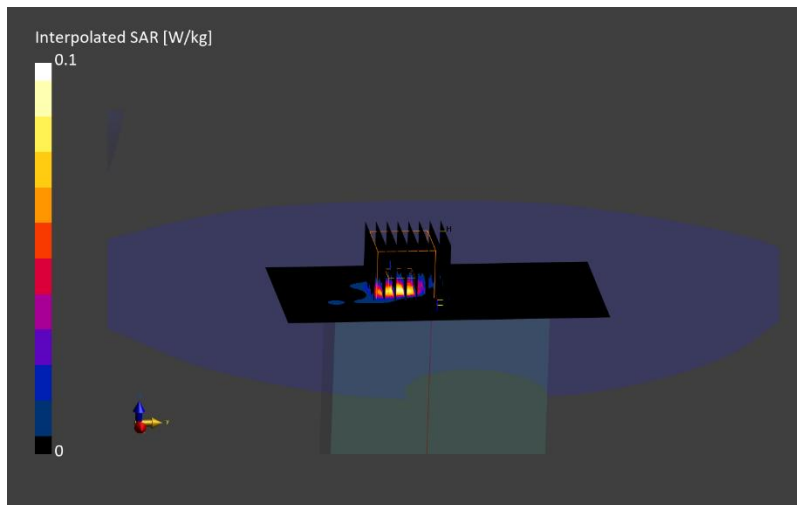
Test Date	Ambient Temp [°C]	TSL Temp [°C]	Measurement SW	Phantom	Type	Cond. [S/m]	TSL Perm.	Probe, Cal. Date	DAE, Cal. Date
2024-01-24	22.1	20.1	16.2.4.2524	Twin-SAM V8.0 - 2165	HSL	5.20	33.7	EX3DV4 - SN7853, 2023-11-14	DAE4ip Sn1844, 2023-11-02

## Scans Setup

	Area Scan	Zoom Scan
Grid Extents [mm]	60.0 x 120.0	24.0 x 24.0 x 22.0
Grid Steps [mm]	10.0 x 10.0	4.0 x 4.0 x 1.4
Sensor Surface [mm]	3.0	1.4
Grading Ratio	N/A	1.4
MAIA	Y	Y

## Measurement Results

psSAR10g [W/Kg]	0.015
Power Drift [dB]	0.21
Peak SAR (Extrapolated) [W/kg]	0.332
M2/M1 [%]	58.1
Dist 3dB Peak [mm]	4.9



# RF SAFETY LABORATORY

DUT: PY7-46195Y; SN: 021LA

## Test Conditions

Exposure Condition	Position, Test Distance [mm]	Band	Signal, UID	Ant.	Channel Number	Frequency [MHz]	ConvF (x,y,z)
Body	Flat, EDGE LEFT, 5.00	WLAN 6 GHz U-NII-5	IEEE 802.11ax (80MHz, MCS0, 99pc duty cycle), 10731	MIMO	Ch. 55	6225.000	5.0

## Test Setup

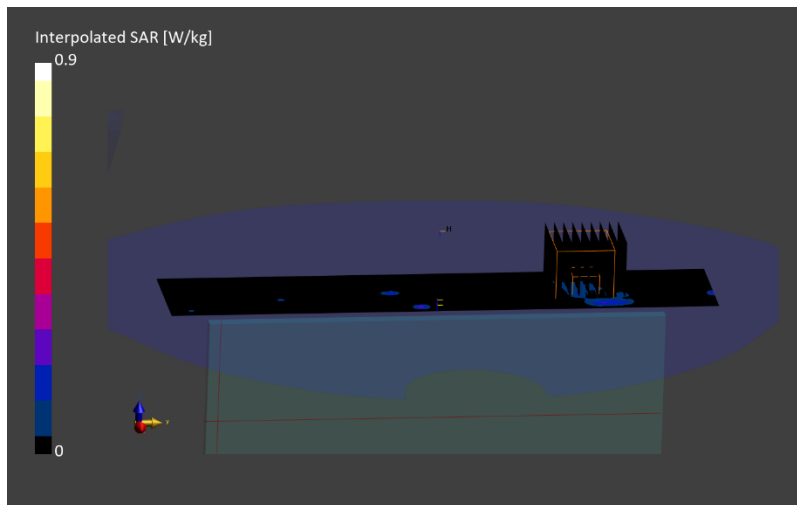
Test Date	Ambient Temp [°C]	TSL Temp [°C]	Measurement SW	Phantom	Type	Cond. [S/m]	TSL Perm.	Probe, Cal. Date	DAE, Cal. Date
2024-01-22	22.1	21	16.2.4.2524	Twin-SAM V8.0 - 2165	HSL	5.67	33.6	EX3DV4 - SN7853, 2023-11-14	DAE4ip Sn1844, 2023-11-02

## Scans Setup

	Area Scan	Zoom Scan
Grid Extents [mm]	34.0 x 34.0	23.8 x 23.8 x 22.0
Grid Steps [mm]	8.5 x 8.5	3.4 x 3.4 x 1.4
Sensor Surface [mm]	3.0	1.4
Grading Ratio	N/A	1.4
MAIA	Y	Y

## Measurement Results

psSAR1g [W/Kg]	0.1
Power Drift [dB]	0.01
Peak SAR (Extrapolated) [W/kg]	0.458
M2/M1 [%]	53.4
Dist 3dB Peak [mm]	7.4





# RF SAFETY LABORATORY

DUT: PY7-46195Y; SN: 021LA

## Test Conditions

Exposure Condition	Position, Test Distance [mm]	Band	Signal, UID	Ant.	Channel Number	Frequency [MHz]	ConvF (x,y,z)
Extremity	Flat, EDGE BOTTOM, 0.00	WLAN 6 GHz U-NII-5	IEEE 802.11ax (80MHz, MCS0, 99pc duty cycle), 10731	MIMO	Ch. 7	5985.000	5.0

## Test Setup

Test Date	Ambient Temp [°C]	TSL Temp [°C]	Measurement SW	Phantom	Type	Cond. [S/m]	TSL Perm.	Probe, Cal. Date	DAE, Cal. Date
2024-02-06	22.3	20.8	16.2.4.2524	Twin-SAM V8.0 - 2165	HSL	5.23	32.5	EX3DV4 - SN7853, 2023-11-14	DAE4ip Sn1844, 2023-11-02

## Scans Setup

	Area Scan	Zoom Scan
Grid Extents [mm]	48.0 x 120.0	22.0 x 22.0 x 22.0
Grid Steps [mm]	8.0 x 10.0	4.0 x 4.0 x 1.4
Sensor Surface [mm]	3.0	1.4
Grading Ratio	N/A	1.4
MAIA	Y	Y

## Measurement Results

psSAR10g [W/Kg]	0.011
Power Drift [dB]	0
Peak SAR (Extrapolated) [W/kg]	0.291
M2/M1 [%]	57.6
Dist 3dB Peak [mm]	5.7



# RF SAFETY LABORATORY

DUT: PY7-46195Y; SN: 021LA

## Test Conditions

Exposure Condition	Position, Test Distance [mm]	Band	Signal, UID	Ant.	Channel Number	Frequency [MHz]	ConvF (x,y,z)
Body	Flat, EDGE LEFT, 5.00	Bluetooth 2.4 GHz	IEEE 802.15.1 Bluetooth (GFSK, DH5), 10032	Chain0	Ch. 78	2480.000	7.09

## Test Setup

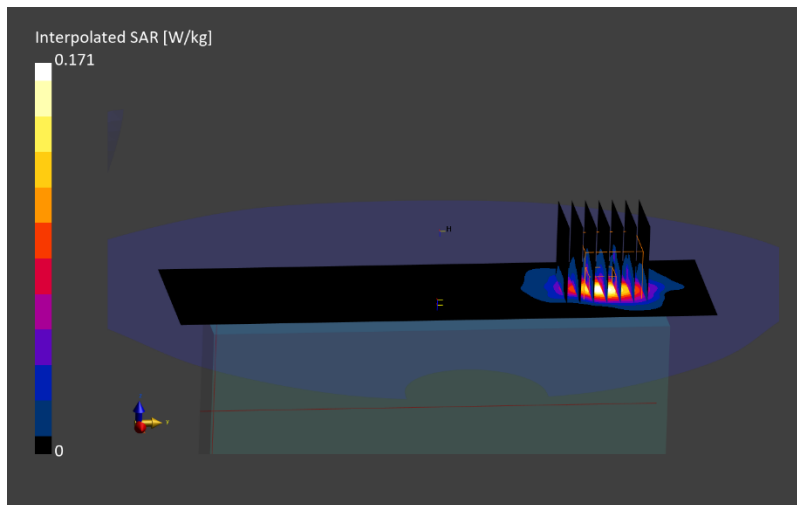
Test Date	Ambient Temp [°C]	TSL Temp [°C]	Measurement SW	Phantom	Type	Cond. [S/m]	TSL Perm.	Probe, Cal. Date	DAE, Cal. Date
2024-01-24	22.1	20.1	16.2.4.2524	Twin-SAM V8.0 - 2165	HSL	1.90	39.9	EX3DV4 - SN7853, 2023-11-14	DAE4ip Sn1844, 2023-11-02

## Scans Setup

	Area Scan	Zoom Scan
Grid Extents [mm]	60.0 x 200.0	30.0 x 30.0 x 30.0
Grid Steps [mm]	10.0 x 10.0	5.0 x 5.0 x 1.5
Sensor Surface [mm]	3.0	1.4
Grading Ratio	N/A	1.5
MAIA	Y	Y

## Measurement Results

psSAR1g [W/Kg]	0.072
Power Drift [dB]	0.11
Peak SAR (Extrapolated) [W/kg]	0.170
M2/M1 [%]	77.8
Dist 3dB Peak [mm]	9.0



# RF SAFETY LABORATORY

DUT: PY7-46195Y; SN: 021LA

## Test Conditions

Exposure Condition	Position, Test Distance [mm]	Band	Signal, UID	Ant.	Channel Number	Frequency [MHz]	ConvF (x,y,z)
Extremity	Flat, EDGE BOTTOM, 0.00	Bluetooth 2.4 GHz	IEEE 802.15.1 Bluetooth (GFSK, DH5), 10032	Chain1	Ch. 78	2480.000	7.09

## Test Setup

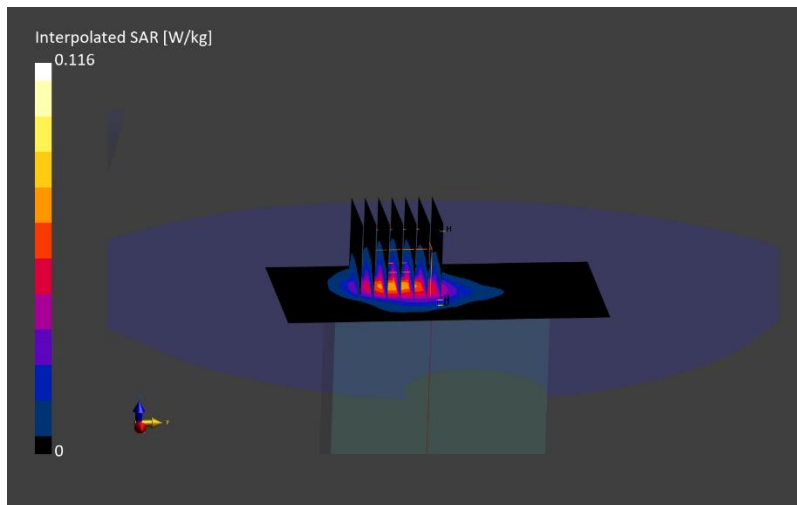
Test Date	Ambient Temp [°C]	TSL Temp [°C]	Measurement SW	Phantom	Type	Cond. [S/m]	TSL Perm.	Probe, Cal. Date	DAE, Cal. Date
2024-01-24	22.1	20.1	16.2.4.2524	Twin-SAM V8.0 - 2165	HSL	1.90	39.9	EX3DV4 - SN7853, 2023-11-14	DAE4ip Sn1844, 2023-11-02

## Scans Setup

	Area Scan	Zoom Scan
Grid Extents [mm]	60.0 x 120.0	30.0 x 30.0 x 30.0
Grid Steps [mm]	10.0 x 10.0	5.0 x 5.0 x 1.5
Sensor Surface [mm]	3.0	1.4
Grading Ratio	N/A	1.5
MAIA	Y	Y

## Measurement Results

psSAR10g [W/Kg]	0.029
Power Drift [dB]	-0.16
Peak SAR (Extrapolated) [W/kg]	0.116
M2/M1 [%]	80.8
Dist 3dB Peak [mm]	9.9



# RF SAFETY LABORATORY

DUT: PY7-46195Y; SN: 07SLA

## Test Conditions

Exposure Condition	Position, Test Distance [mm]	Band	Signal, UID	Ant.	Channel Number	Frequency [MHz]	ConvF (x,y,z)
Off-Body	Flat, FRONT, 25.00	Band n5	5G NR (DFT-s-OFDM, 1 RB, 20 MHz, QPSK, 15 kHz) RBPosition:Mid AntennaCfg:SISO, 10931	Main1	Ch. 167300	836.500	9.24

## Test Setup

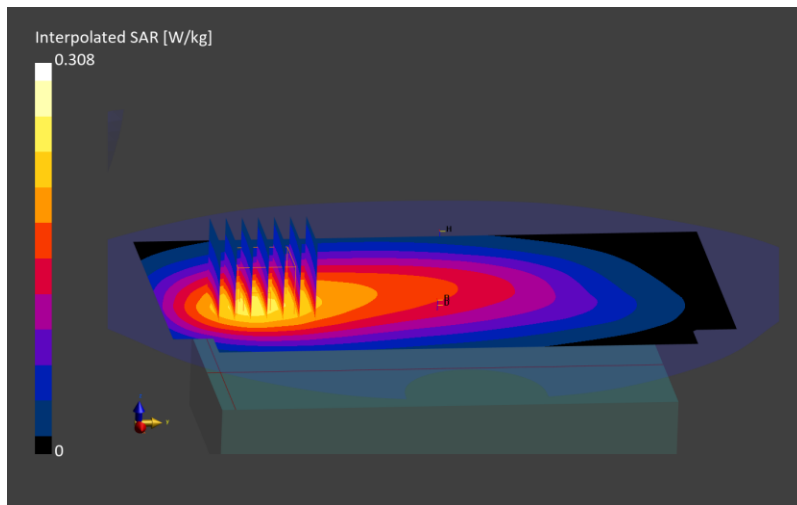
Test Date	Ambient Temp [°C]	TSL Temp [°C]	Measurement SW	Phantom	Type	Cond. [S/m]	TSL Perm.	Probe, Cal. Date	DAE, Cal. Date
2024-02-12	21.6	21.5	16.2.4.2524	Twinn-SAM V8.0 - 2165	HSL	0.939	43.4	EX3DV4 - SN7859, 2023-12-19	DAE4ip Sn1844, 2023-11-02

## Scans Setup

	Area Scan	Zoom Scan
Grid Extents [mm]	120.0 x 210.0	30.0 x 30.0 x 30.0
Grid Steps [mm]	15.0 x 15.0	6.0 x 6.0 x 1.5
Sensor Surface [mm]	3.0	1.4
Grading Ratio	N/A	1.5
MAIA	Y	Y

## Measurement Results

psSAR1g [W/Kg]	0.218
Power Drift [dB]	-0.02
Peak SAR (Extrapolated) [W/kg]	0.308
M2/M1 [%]	88.5
Dist 3dB Peak [mm]	> 15.0



# RF SAFETY LABORATORY

DUT: PY7-46195Y; SN: 07SLA

## Test Conditions

Exposure Condition	Position, Test Distance [mm]	Band	Signal, UID	Ant.	Channel Number	Frequency [MHz]	ConvF (x,y,z)
Off-Body	Flat, EDGE BOTTOM, 25.00	Band n77	5G NR (DFT-s-OFDM, 1 RB, 100 MHz, QPSK, 30 kHz) RBPosition:Mid AntennaCfg:SISO, 10866	Main1	Ch. 650000	3750.000	6.66

## Test Setup

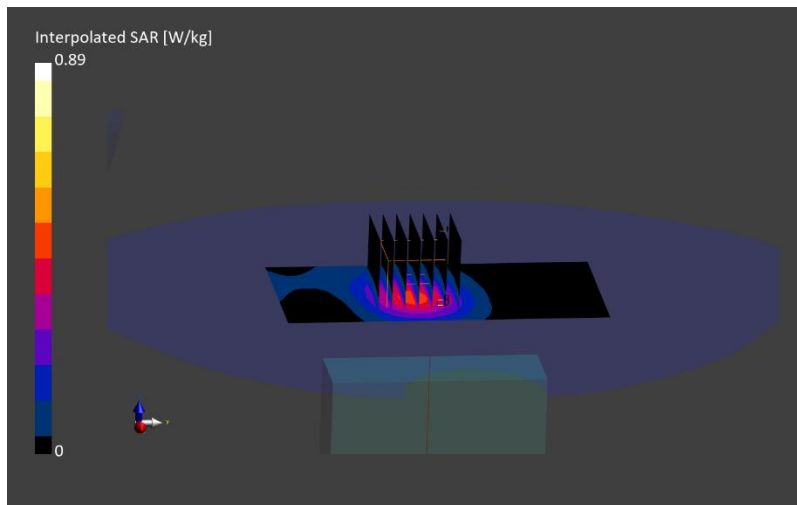
Test Date	Ambient Temp [°C]	TSL Temp [°C]	Measurement SW	Phantom	Type	Cond. [S/m]	TSL Perm.	Probe, Cal. Date	DAE, Cal. Date
2024-02-14	23.1	21.8	16.2.4.2524	Twin-SAM V8.0 - 2159	HSL	2.94	37.9	EX3DV4 - SN7836, 2023-10-11	DAE4ip Sn1839, 2023-10-09

## Scans Setup

	Area Scan	Zoom Scan
Grid Extents [mm]	60.0 x 120.0	30.0 x 30.0 x 28.0
Grid Steps [mm]	10.0 x 10.0	5.0 x 5.0 x 1.4
Sensor Surface [mm]	3.0	1.4
Grading Ratio	N/A	1.5
MAIA	Y	Y

## Measurement Results

psSAR1g [W/Kg]	0.387
Power Drift [dB]	0.04
Peak SAR (Extrapolated) [W/kg]	0.890
M2/M1 [%]	74.4
Dist 3dB Peak [mm]	16.6



# RF SAFETY LABORATORY

DUT: PY7-46195Y; SN: 07SLA

## Test Conditions

Exposure Condition	Position, Test Distance [mm]	Band	Signal, UID	Ant.	Channel Number	Frequency [MHz]	ConvF (x,y,z)
Off-Body	Flat, FRONT, 25.00	Band n66	5G NR (DFT-s-OFDM, 1 RB, 20 MHz, QPSK, 15 kHz) RBPosition:Low AntennaCfg:SISO, 10931	Main2	Ch. 349000	1745.000	8.34

## Test Setup

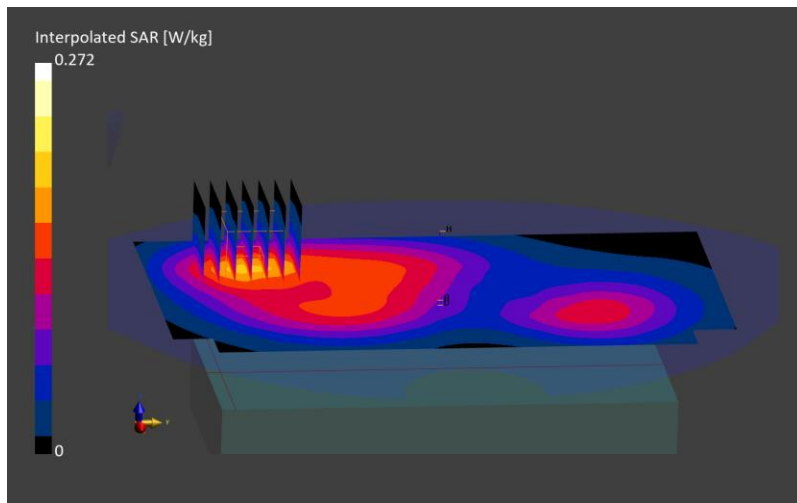
Test Date	Ambient Temp [°C]	TSL Temp [°C]	Measurement SW	Phantom	Type	Cond. [S/m]	TSL Perm.	Probe, Cal. Date	DAE, Cal. Date
2024-02-12	21.6	21.5	16.2.4.2524	Twinn-SAM V8.0 - 2165	HSL	1.38	41.3	EX3DV4 - SN7859, 2023-12-19	DAE4ip Sn1844, 2023-11-02

## Scans Setup

	Area Scan	Zoom Scan
Grid Extents [mm]	120.0 x 210.0	30.0 x 30.0 x 30.0
Grid Steps [mm]	15.0 x 15.0	6.0 x 6.0 x 1.5
Sensor Surface [mm]	3.0	1.4
Grading Ratio	N/A	1.5
MAIA	Y	Y

## Measurement Results

psSAR1g [W/Kg]	0.165
Power Drift [dB]	0
Peak SAR (Extrapolated) [W/kg]	0.272
M2/M1 [%]	83.0
Dist 3dB Peak [mm]	> 15.0



# RF SAFETY LABORATORY

DUT: PY7-46195Y; SN: 0ZQLA

## Test Conditions

Exposure Condition	Position, Test Distance [mm]	Band	Signal, UID	Ant.	Channel Number	Frequency [MHz]	ConvF (x,y,z)
Off-Body	Flat, EDGE TOP, 25.00	Band n41	5G NR (DFT-s-OFDM, 1 RB, 100 MHz, QPSK, 30 kHz) RBPosition:High AntennaCfg:SISO, 10866	Sub	Ch. 518598	2592.990	7.26

## Test Setup

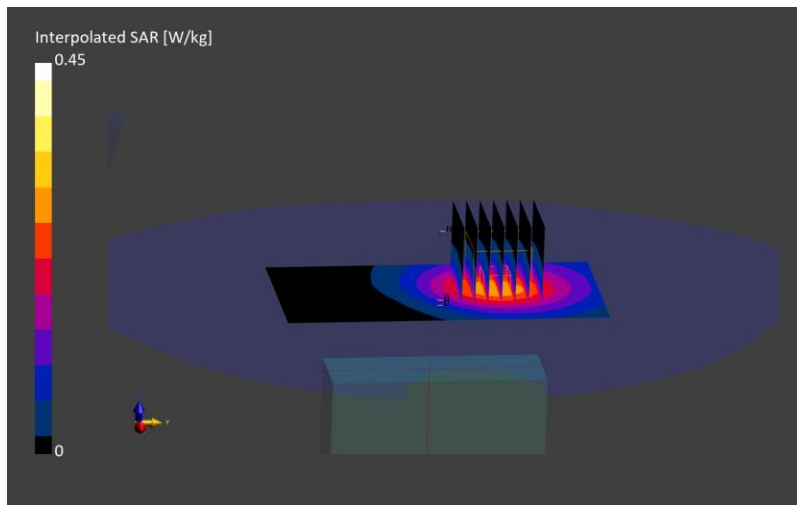
Test Date	Ambient Temp [°C]	TSL Temp [°C]	Measurement SW	Phantom	Type	Cond. [S/m]	TSL Perm.	Probe, Cal. Date	DAE, Cal. Date
2024-02-14	23.1	21.8	16.2.4.2524	Twin-SAM V8.0 - 2159	HSL	1.95	40.0	EX3DV4 - SN7836, 2023-10-11	DAE4ip Sn1839, 2023-10-09

## Scans Setup

	Area Scan	Zoom Scan
Grid Extents [mm]	60.0 x 120.0	30.0 x 30.0 x 30.0
Grid Steps [mm]	10.0 x 10.0	5.0 x 5.0 x 1.5
Sensor Surface [mm]	3.0	1.4
Grading Ratio	N/A	1.5
MAIA	Y	Y

## Measurement Results

psSAR1g [W/Kg]	0.246
Power Drift [dB]	0.06
Peak SAR (Extrapolated) [W/kg]	0.450
M2/M1 [%]	80.8
Dist 3dB Peak [mm]	21.3



# RF SAFETY LABORATORY

DUT: PY7-46195Y; SN: 079LA

## Test Conditions

Position, Test Distance [mm]	Band	Signal, UID	Ant.	Channel Number	Frequency [MHz]
Flat, EDGE Left, 2.00	WLAN 6 GHz U-NII-5	IEEE 802.11ax (80MHz, MCS0, 99pc duty cycle), 10731	MIMO	Ch. 7	5985.000

## Test Setup

Test Date	Measurement SW	Probe, Cal. Date	DAE, Cal. Date
2024-02-10	3.2.2.2358	EUmmWV4 - SN9690_F1-55GHz - 2023-10-09	DAE4ip Sn1838 - 2023-10-09

## Scans Setup

Grid Extents [mm]	Grid Steps [lambda]	Sensor Surface Distance [mm]
45.0x45.0	0.04075	2.0

## Measurement Results

Averaging Area [cm <sup>2</sup> ]	Power Drift [dB]	E <sub>max</sub> [V/m]	psPDn+ [W/m <sup>2</sup> ]	psPDtot+ [W/m <sup>2</sup> ]
4.00	-0.01	41.0	1.77	2.79

