

#01_GSM850_GPRS (4 Tx slots)_Left Cheek_Ch128

Communication System: GSM850; Frequency: 824.2 MHz; Duty Cycle: 1:2.08

Medium: HSL_850_170530 Medium parameters used: $f = 824.2$ MHz; $\sigma = 0.862$ S/m; $\epsilon_r = 41.126$; $\rho = 1000$ kg/m³

Ambient Temperature : 23.4 °C; Liquid Temperature : 22.4 °C

DASY5 Configuration:

- Probe: EX3DV4 - SN3976; ConvF(10.43, 10.43, 10.43); Calibrated: 2017/2/21;
- Sensor-Surface: 1.4mm (Mechanical Surface Detection)
- Electronics: DAE4 Sn1424; Calibrated: 2017/2/16
- Phantom: SAM-Right; Type: SAM; Serial: TP-1303
- Measurement SW: DASY52, Version 52.8 (8); SEMCAD X Version 14.6.10 (7373)

Area Scan (71x121x1): Interpolated grid: dx=1.500 mm, dy=1.500 mm

Maximum value of SAR (interpolated) = 0.289 W/kg

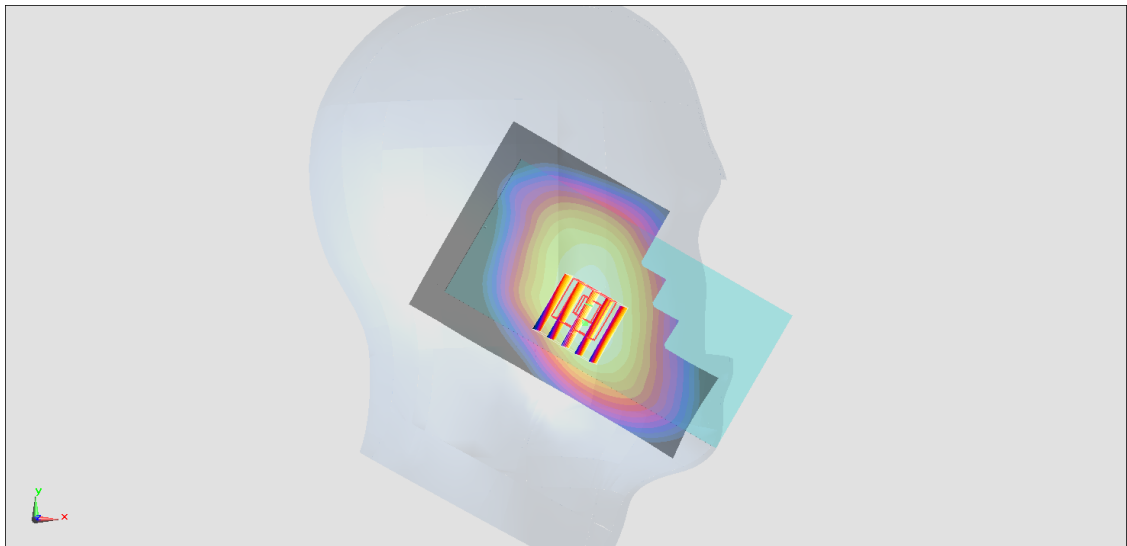
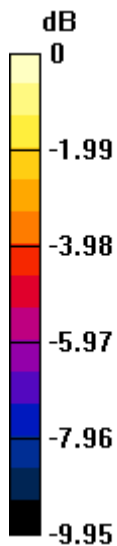
Zoom Scan (5x5x7)/Cube 0: Measurement grid: dx=8mm, dy=8mm, dz=5mm

Reference Value = 18.00 V/m; Power Drift = -0.01 dB

Peak SAR (extrapolated) = 0.298 W/kg

SAR(1 g) = 0.234 W/kg; SAR(10 g) = 0.182 W/kg

Maximum value of SAR (measured) = 0.273 W/kg



0 dB = 0.273 W/kg = -5.64 dBW/kg

#02_GSM1900_GPRS (3 Tx slots)_Left Cheek_Ch810

Communication System: PCS ; Frequency: 1909.8 MHz; Duty Cycle: 1:2.77

Medium: HSL_1900_170529 Medium parameters used: $f = 1910$ MHz; $\sigma = 1.4$ S/m; $\epsilon_r = 38.548$; $\rho = 1000$ kg/m³

Ambient Temperature : 23.5 °C ; Liquid Temperature : 22.5 °C

DASY5 Configuration:

- Probe: ES3DV3 - SN3169; ConvF(5.03, 5.03, 5.03); Calibrated: 2017/5/11;
- Sensor-Surface: 3mm (Mechanical Surface Detection)
- Electronics: DAE4 Sn853; Calibrated: 2016/7/11
- Phantom: SAM_Left; Type: QD000P40CD; Serial: TP:1431
- Measurement SW: DASY52, Version 52.8 (8); SEMCAD X Version 14.6.10 (7373)

Area Scan (61x121x1): Interpolated grid: dx=1.500 mm, dy=1.500 mm

Maximum value of SAR (interpolated) = 0.152 W/kg

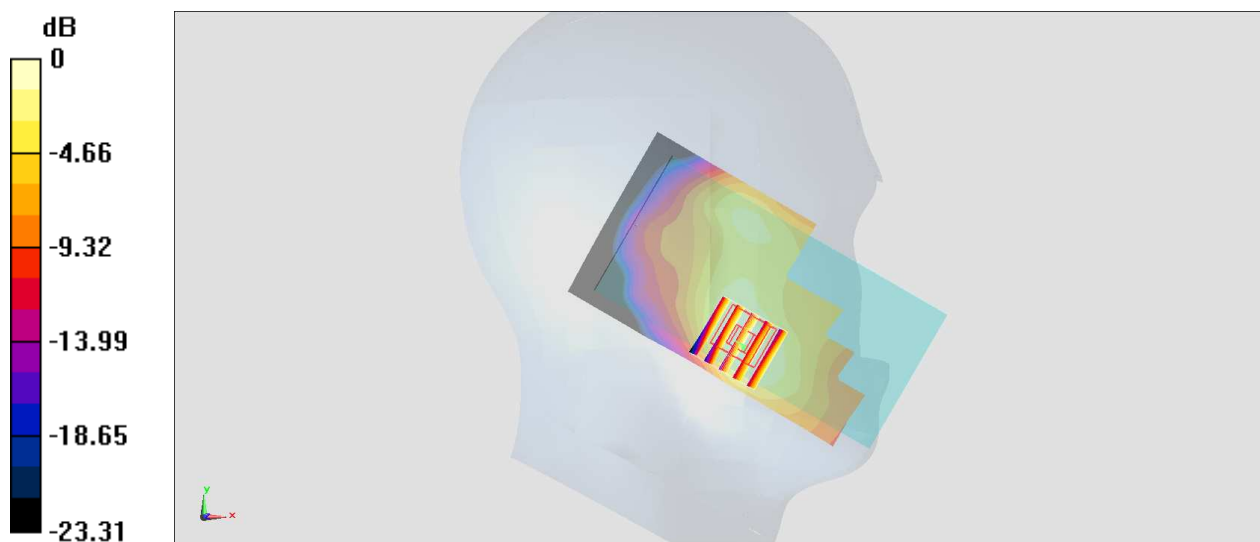
Zoom Scan (5x5x7)/Cube 0: Measurement grid: dx=8mm, dy=8mm, dz=5mm

Reference Value = 9.593 V/m; Power Drift = 0.02 dB

Peak SAR (extrapolated) = 0.201 W/kg

SAR(1 g) = 0.127 W/kg; SAR(10 g) = 0.072 W/kg

Maximum value of SAR (measured) = 0.152 W/kg



0 dB = 0.152 W/kg = -8.18 dBW/kg

#03_WCDMA II_RMC 12.2Kbps_Left Cheek_Ch9538

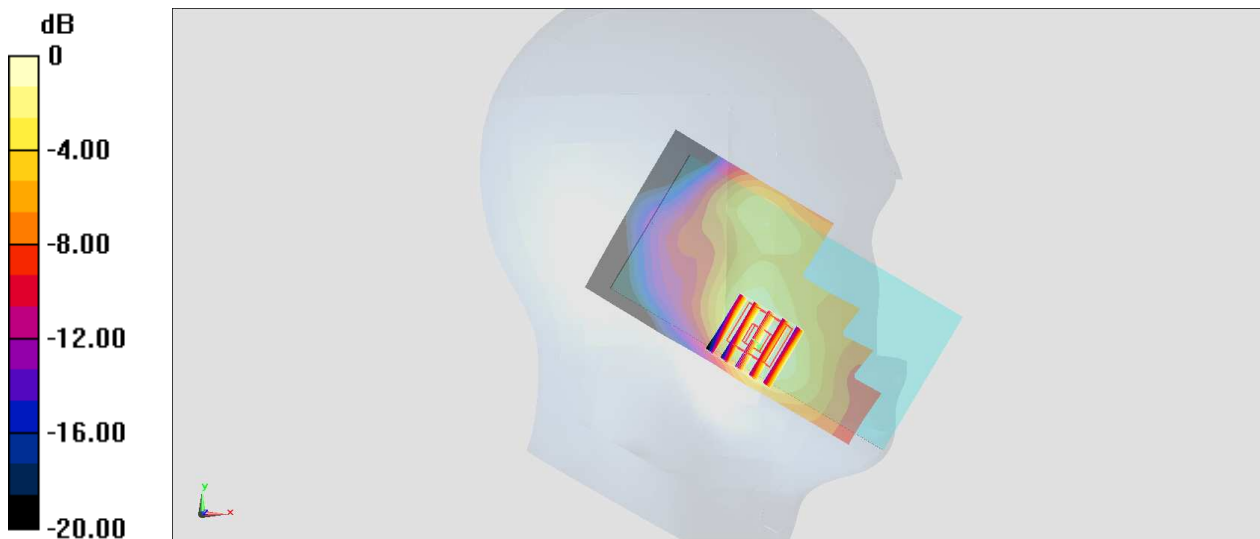
Communication System: WCDMA ; Frequency: 1907.6 MHz;Duty Cycle: 1:1
Medium: HSL_1900_170529 Medium parameters used: $f = 1908 \text{ MHz}$; $\sigma = 1.398 \text{ S/m}$; $\epsilon_r = 38.566$;
 $\rho = 1000 \text{ kg/m}^3$
Ambient Temperature : $23.5 \text{ }^\circ\text{C}$; Liquid Temperature : $22.5 \text{ }^\circ\text{C}$

DASY5 Configuration:

- Probe: ES3DV3 - SN3169; ConvF(5.03, 5.03, 5.03); Calibrated: 2017/5/11;
- Sensor-Surface: 3mm (Mechanical Surface Detection)
- Electronics: DAE4 Sn853; Calibrated: 2016/7/11
- Phantom: SAM_Left; Type: QD000P40CD; Serial: TP:1431
- Measurement SW: DASY52, Version 52.8 (8);SEMCAD X Version 14.6.10 (7373)

Area Scan (61x121x1): Interpolated grid: $dx=1.500 \text{ mm}$, $dy=1.500 \text{ mm}$
Maximum value of SAR (interpolated) = 0.180 W/kg

Zoom Scan (5x5x7)/Cube 0: Measurement grid: $dx=8\text{mm}$, $dy=8\text{mm}$, $dz=5\text{mm}$
Reference Value = 10.58 V/m ; Power Drift = -0.01 dB
Peak SAR (extrapolated) = 0.241 W/kg
SAR(1 g) = 0.149 W/kg ; SAR(10 g) = 0.089 W/kg
Maximum value of SAR (measured) = 0.180 W/kg



$0 \text{ dB} = 0.180 \text{ W/kg} = -7.45 \text{ dBW/kg}$

#04_WCDMA V_RMC 12.2Kbps_Left Cheek_Ch4132

Communication System: WCDMA; Frequency: 826.4 MHz; Duty Cycle: 1:1

Medium: HSL_850_170530 Medium parameters used: $f = 826.4$ MHz; $\sigma = 0.864$ S/m; $\epsilon_r = 41.094$; $\rho = 1000$ kg/m³

Ambient Temperature : 23.4 °C ; Liquid Temperature : 22.4 °C

DASY5 Configuration:

- Probe: EX3DV4 - SN3976; ConvF(10.43, 10.43, 10.43); Calibrated: 2017/2/21;
- Sensor-Surface: 1.4mm (Mechanical Surface Detection)
- Electronics: DAE4 Sn1424; Calibrated: 2017/2/16
- Phantom: SAM-Right; Type: SAM; Serial: TP-1303
- Measurement SW: DASY52, Version 52.8 (8); SEMCAD X Version 14.6.10 (7373)

Area Scan (71x121x1): Interpolated grid: dx=1.500 mm, dy=1.500 mm

Maximum value of SAR (interpolated) = 0.297 W/kg

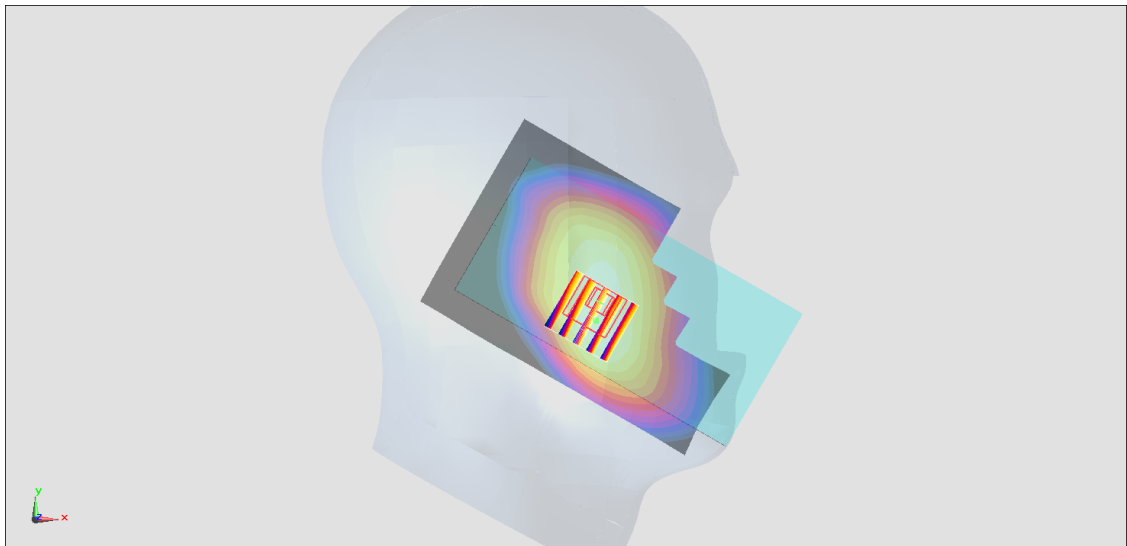
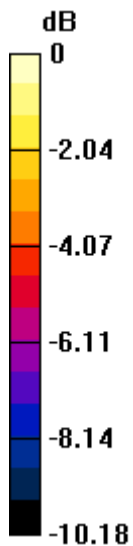
Zoom Scan (5x5x7)/Cube 0: Measurement grid: dx=8mm, dy=8mm, dz=5mm

Reference Value = 18.04 V/m; Power Drift = -0.02 dB

Peak SAR (extrapolated) = 0.310 W/kg

SAR(1 g) = 0.247 W/kg; SAR(10 g) = 0.191 W/kg

Maximum value of SAR (measured) = 0.287 W/kg



0 dB = 0.287 W/kg = -5.42 dBW/kg

#05_LTE Band 5_10M_QPSK_1_0_Left Cheek_Ch20525

Communication System: LTE; Frequency: 836.5 MHz; Duty Cycle: 1:1

Medium: HSL_850_170530 Medium parameters used: $f = 836.5$ MHz; $\sigma = 0.872$ S/m; $\epsilon_r = 40.974$; $\rho = 1000$ kg/m³

Ambient Temperature : 23.4 °C ; Liquid Temperature : 22.4 °C

DASY5 Configuration:

- Probe: EX3DV4 - SN3976; ConvF(10.43, 10.43, 10.43); Calibrated: 2017/2/21;
- Sensor-Surface: 1.4mm (Mechanical Surface Detection)
- Electronics: DAE4 Sn1424; Calibrated: 2017/2/16
- Phantom: SAM-Right; Type: SAM; Serial: TP-1303
- Measurement SW: DASY52, Version 52.8 (8); SEMCAD X Version 14.6.10 (7373)

Area Scan (71x121x1): Interpolated grid: dx=1.500 mm, dy=1.500 mm

Maximum value of SAR (interpolated) = 0.236 W/kg

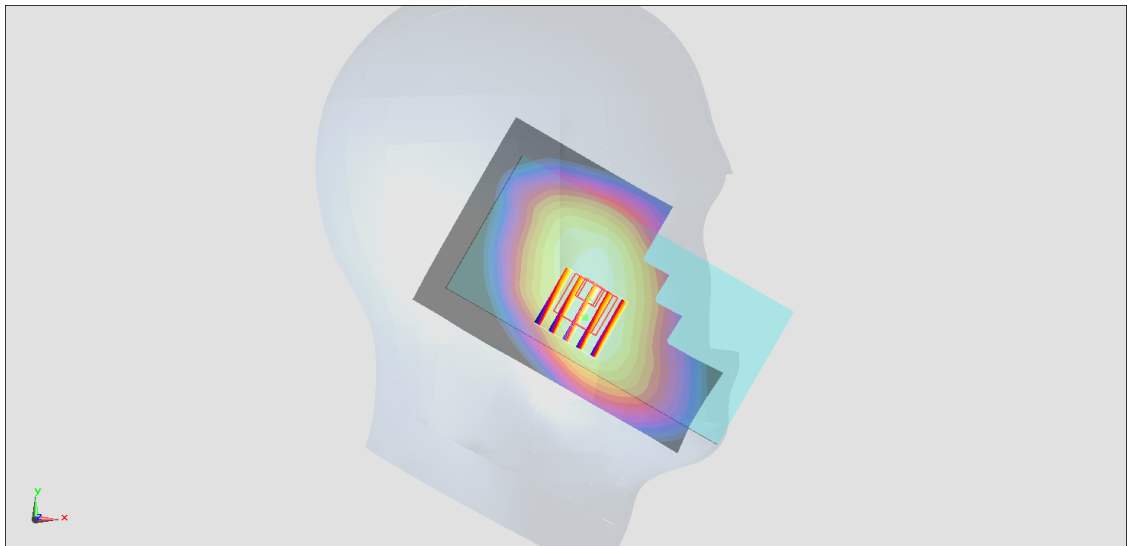
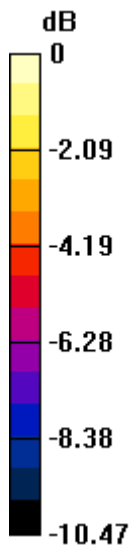
Zoom Scan (5x5x7)/Cube 0: Measurement grid: dx=8mm, dy=8mm, dz=5mm

Reference Value = 16.01 V/m; Power Drift = -0.04 dB

Peak SAR (extrapolated) = 0.247 W/kg

SAR(1 g) = 0.202 W/kg; SAR(10 g) = 0.155 W/kg

Maximum value of SAR (measured) = 0.231 W/kg



0 dB = 0.231 W/kg = -6.36 dBW/kg

#06_LTE Band 7_20M_QPSK_1_0_Right Cheek_Ch21100

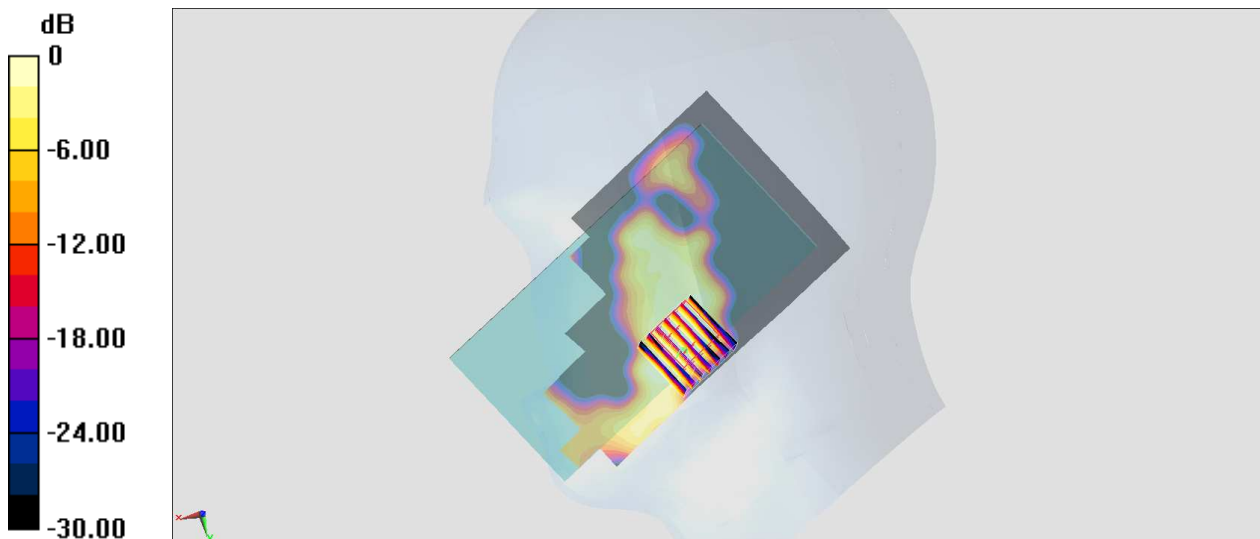
Communication System: LTE ; Frequency: 2535 MHz;Duty Cycle: 1:1
Medium: HSL_2600_170530 Medium parameters used : $f = 2535$ MHz; $\sigma = 1.855$ S/m; $\epsilon_r = 39.758$;
 $\rho = 1000$ kg/m³
Ambient Temperature : 23.5 °C ; Liquid Temperature : 22.5 °C

DASY5 Configuration:

- Probe: ES3DV3 - SN3169; ConvF(4.47, 4.47, 4.47); Calibrated: 2017/5/11;
- Sensor-Surface: 3mm (Mechanical Surface Detection)
- Electronics: DAE4 Sn853; Calibrated: 2016/7/11
- Phantom: SAM_Left; Type: QD000P40CD; Serial: TP:1431
- Measurement SW: DASY52, Version 52.8 (8);SEMCAD X Version 14.6.10 (7373)

Area Scan (81x151x1): Interpolated grid: dx=1.200 mm, dy=1.200 mm
Maximum value of SAR (interpolated) = 0.127 W/kg

Zoom Scan (7x7x7)/Cube 0: Measurement grid: dx=5mm, dy=5mm, dz=5mm
Reference Value = 5.111 V/m; Power Drift = -0.16 dB
Peak SAR (extrapolated) = 0.317 W/kg
SAR(1 g) = 0.066 W/kg; SAR(10 g) = 0.032 W/kg
Maximum value of SAR (measured) = 0.0871 W/kg



0 dB = 0.0871 W/kg = -10.60 dBW/kg

#07_LTE Band 41_20M_QPSK_1_0_Right Cheek_Ch40340

Communication System: LTE ; Frequency: 2565 MHz;Duty Cycle: 1:1.59

Medium: HSL_2600_170601 Medium parameters used: $f = 2565$ MHz; $\sigma = 1.912$ S/m; $\epsilon_r = 38.765$; $\rho = 1000$ kg/m³

Ambient Temperature : 23.5 °C ; Liquid Temperature : 22.5 °C

DASY5 Configuration:

- Probe: ES3DV3 - SN3270; ConvF(4.37, 4.37, 4.37); Calibrated: 2016/8/26;
- Sensor-Surface: 3mm (Mechanical Surface Detection)
- Electronics: DAE4 Sn916; Calibrated: 2016/12/15
- Phantom: SAM-Left; Type: QD 000 P40 C; Serial: TP-1446
- Measurement SW: DASY52, Version 52.8 (8);SEMCAD X Version 14.6.10 (7331)

Area Scan (81x151x1): Interpolated grid: dx=1.200 mm, dy=1.200 mm

Maximum value of SAR (interpolated) = 0.132 W/kg

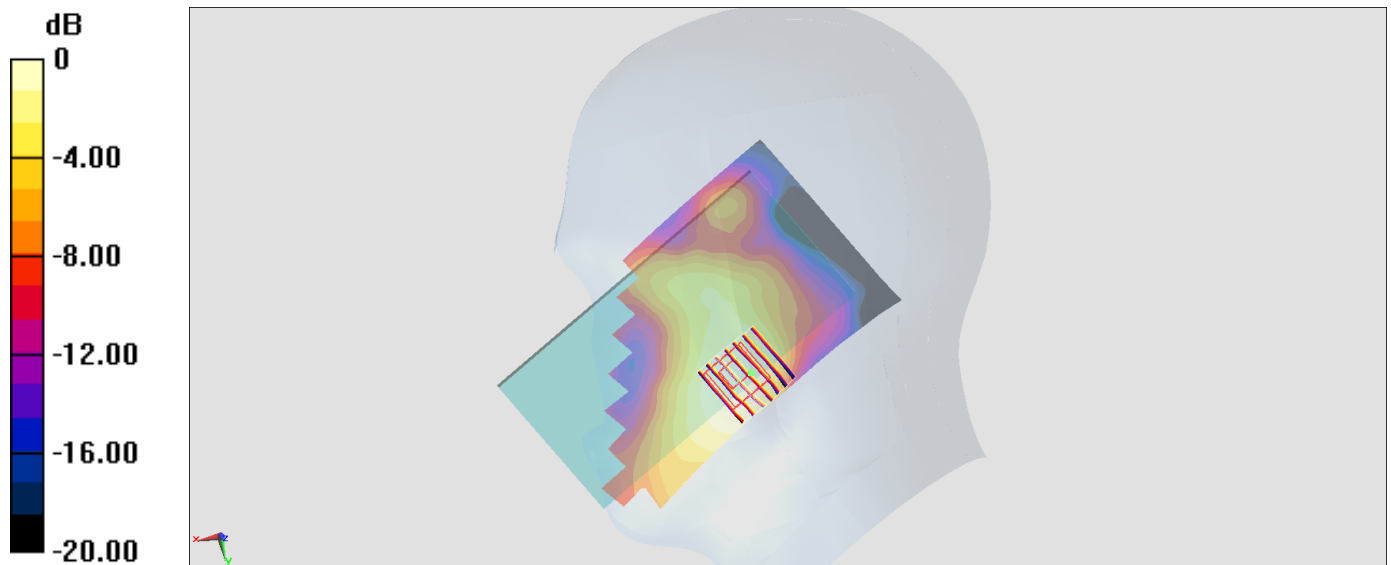
Zoom Scan (7x7x7)/Cube 0: Measurement grid: dx=5mm, dy=5mm, dz=5mm

Reference Value = 6.560 V/m; Power Drift = 0.16 dB

Peak SAR (extrapolated) = 0.174 W/kg

SAR(1 g) = 0.099 W/kg; SAR(10 g) = 0.058 W/kg

Maximum value of SAR (measured) = 0.119 W/kg



0 dB = 0.119 W/kg = -9.24 dBW/kg

#08_WLAN2.4GHz_802.11b 1Mbps_Left Cheek_Ch6

Communication System: 802.11b ; Frequency: 2437 MHz;Duty Cycle: 1:1

Medium: HSL_2450_170528 Medium parameters used : $f = 2437$ MHz; $\sigma = 1.777$ S/m; $\epsilon_r = 40.373$;

$\rho = 1000$ kg/m³

Ambient Temperature : 23.5 °C ; Liquid Temperature : 22.5 °C

DASY5 Configuration

- Probe: ES3DV3 - SN3169; ConvF(4.5, 4.5, 4.5); Calibrated: 2017/5/11;
- Sensor-Surface: 3mm (Mechanical Surface Detection)
- Electronics: DAE4 Sn853; Calibrated: 2016/7/11
- Phantom: SAM_Right; Type: QD000P40CD; Serial: S/N:1801
- Measurement SW: DASY52, Version 52.8 (8); SEMCAD X Version 14.6.10 (7373)

Area Scan (71x141x1): Interpolated grid: dx=1.200 mm, dy=1.200 mm

Maximum value of SAR (interpolated) = 1.55 W/kg

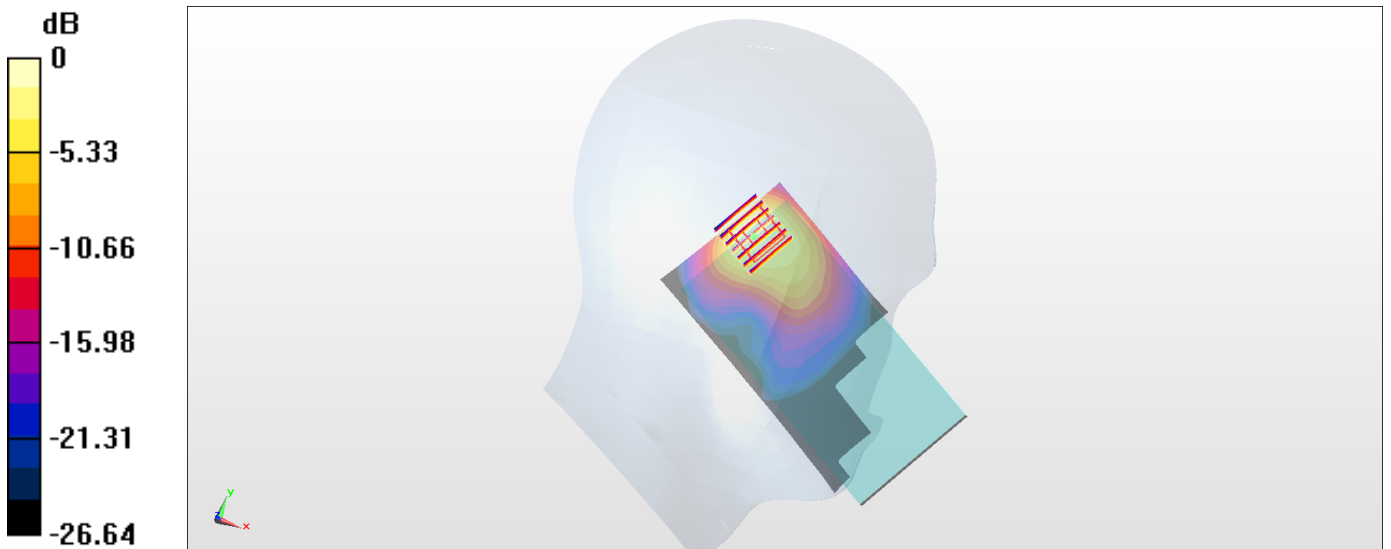
Zoom Scan (7x7x7)/Cube 0: Measurement grid: dx=5mm, dy=5mm, dz=5mm

Reference Value = 20.73 V/m; Power Drift = 0.04 dB

Peak SAR (extrapolated) = 2.53 W/kg

SAR(1 g) = 1.12 W/kg; SAR(10 g) = 0.535 W/kg

Maximum value of SAR (measured) = 1.46 W/kg



0 dB = 1.46 W/kg = 1.64 dBW/kg

#09_WLAN5GHz_802.11a_6Mbps_Left Cheek_Ch64

Communication System: 802.11a ; Frequency: 5320 MHz;Duty Cycle: 1:1.029

Medium: HSL_5G_170528 Medium parameters used: $f = 5320$ MHz; $\sigma = 4.79$ S/m; $\epsilon_r = 37.189$; $\rho = 1000$ kg/m³

Ambient Temperature : 23.5 °C; Liquid Temperature : 22.5 °C

DASY5 Configuration

- Probe: EX3DV4 - SN7375; ConvF(5.31, 5.31, 5.31); Calibrated: 2016/12/8;
- Sensor-Surface: 1.4mm (Mechanical Surface Detection)
- Electronics: DAE4 Sn1305; Calibrated: 2016/12/15
- Phantom: SAM_Left; Type: QD000P40CD; Serial: S/N:1796
- Measurement SW: DASY52, Version 52.8 (8); SEMCAD X Version 14.6.10 (7373)

Area Scan (101x181x1): Interpolated grid: dx=1.000 mm, dy=1.000 mm

Maximum value of SAR (interpolated) = 0.797 W/kg

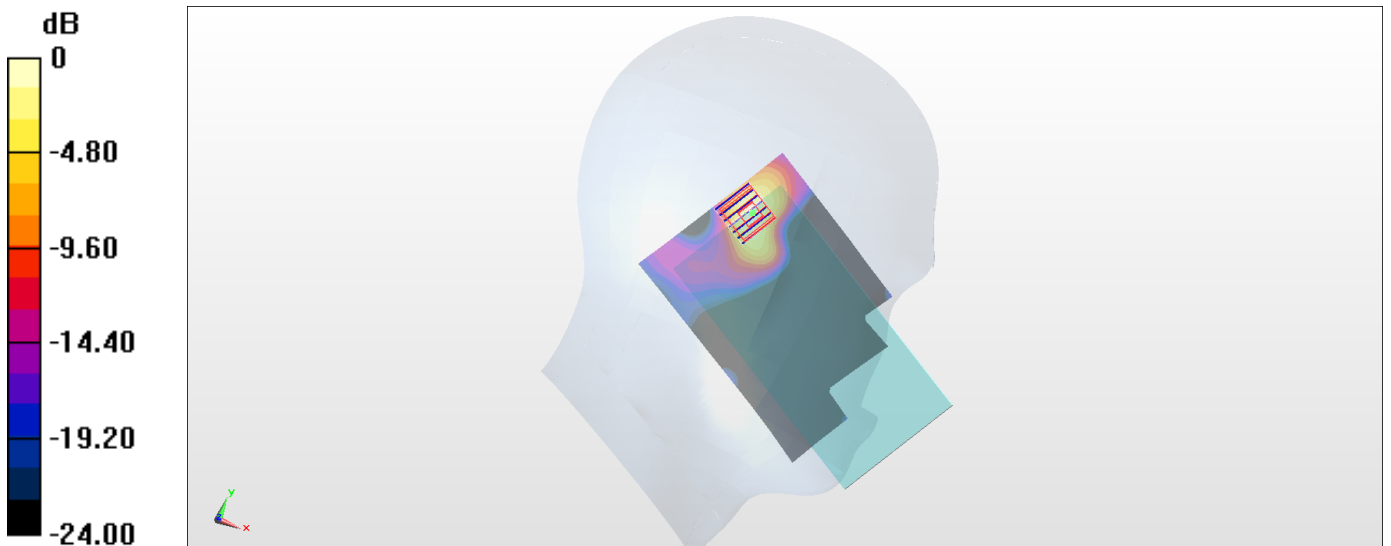
Zoom Scan (7x7x7)/Cube 0: Measurement grid: dx=4mm, dy=4mm, dz=1.4mm

Reference Value = 9.367 V/m; Power Drift = 0.15 dB

Peak SAR (extrapolated) = 1.65 W/kg

SAR(1 g) = 0.435 W/kg; SAR(10 g) = 0.145 W/kg

Maximum value of SAR (measured) = 1.00 W/kg



0 dB = 1.00 W/kg = 0.00 dBW/kg

#10_WLAN5GHz_802.11a 6Mbps_Left Cheek_Ch100

Communication System: 802.11a ; Frequency: 5500 MHz;Duty Cycle: 1:1.029

Medium: HSL_5G_170528 Medium parameters used: $f = 5500$ MHz; $\sigma = 4.968$ S/m; $\epsilon_r = 36.935$; $\rho = 1000$ kg/m³

Ambient Temperature : 23.5 °C; Liquid Temperature : 22.5 °C

DASY5 Configuration

- Probe: EX3DV4 - SN7375; ConvF(5.09, 5.09, 5.09); Calibrated: 2016/12/8;
- Sensor-Surface: 1.4mm (Mechanical Surface Detection)
- Electronics: DAE4 Sn1305; Calibrated: 2016/12/15
- Phantom: SAM_Left; Type: QD000P40CD; Serial: S/N:1796
- Measurement SW: DASY52, Version 52.8 (8); SEMCAD X Version 14.6.10 (7373)

Area Scan (101x181x1): Interpolated grid: dx=1.000 mm, dy=1.000 mm

Maximum value of SAR (interpolated) = 0.651 W/kg

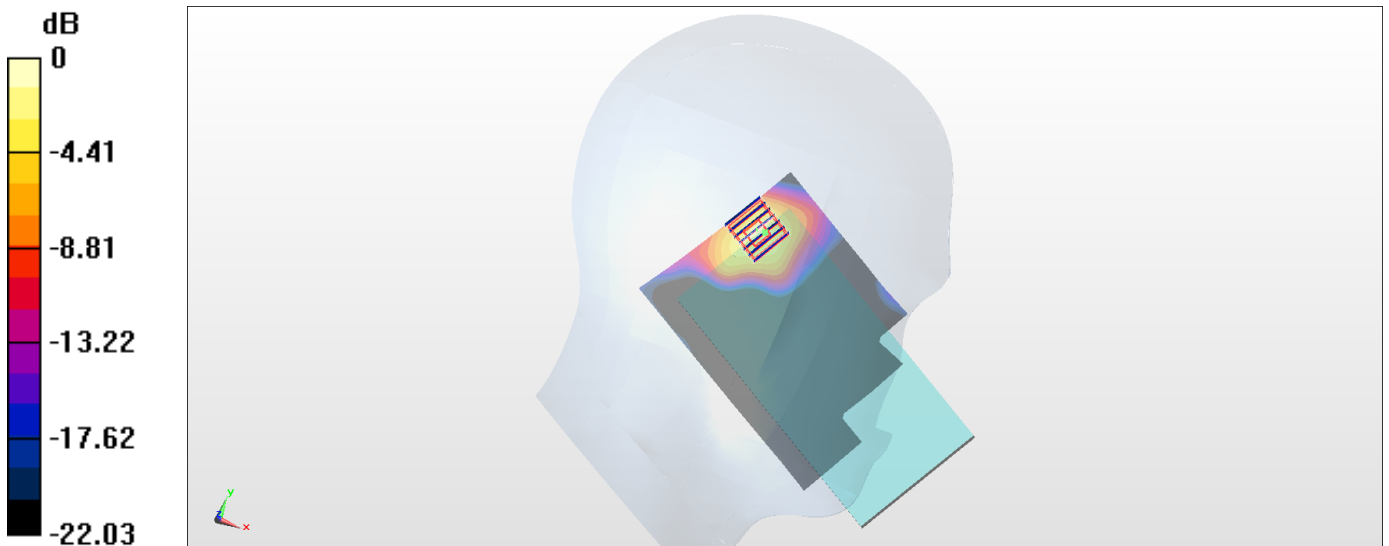
Zoom Scan (7x7x7)/Cube 0: Measurement grid: dx=4mm, dy=4mm, dz=1.4mm

Reference Value = 7.558 V/m; Power Drift = 0.18 dB

Peak SAR (extrapolated) = 1.79 W/kg

SAR(1 g) = 0.469 W/kg; SAR(10 g) = 0.158 W/kg

Maximum value of SAR (measured) = 1.11 W/kg



0 dB = 1.11 W/kg = 0.45 dBW/kg

#11_WLAN5GHz_802.11a 6Mbps_Left Cheek_Ch149

Communication System: 802.11a ; Frequency: 5745 MHz;Duty Cycle: 1:1.029

Medium: HSL5G_170528 Medium parameters used: $f = 5745$ MHz; $\sigma = 5.23$ S/m; $\epsilon_r = 36.592$; $\rho = 1000$ kg/m³

Ambient Temperature : 23.5 °C ; Liquid Temperature : 22.5 °C

DASY5 Configuration

- Probe: EX3DV4 - SN7375; ConvF(4.78, 4.78, 4.78); Calibrated: 2016/12/8;
- Sensor-Surface: 1.4mm (Mechanical Surface Detection)
- Electronics: DAE4 Sn1305; Calibrated: 2016/12/15
- Phantom: SAM_Left; Type: QD000P40CD; Serial: S/N:1796
- Measurement SW: DASY52, Version 52.8 (8); SEMCAD X Version 14.6.10 (7373)

Area Scan (101x181x1): Interpolated grid: dx=1.000 mm, dy=1.000 mm.

Maximum value of SAR (interpolated) = 1.13 W/kg

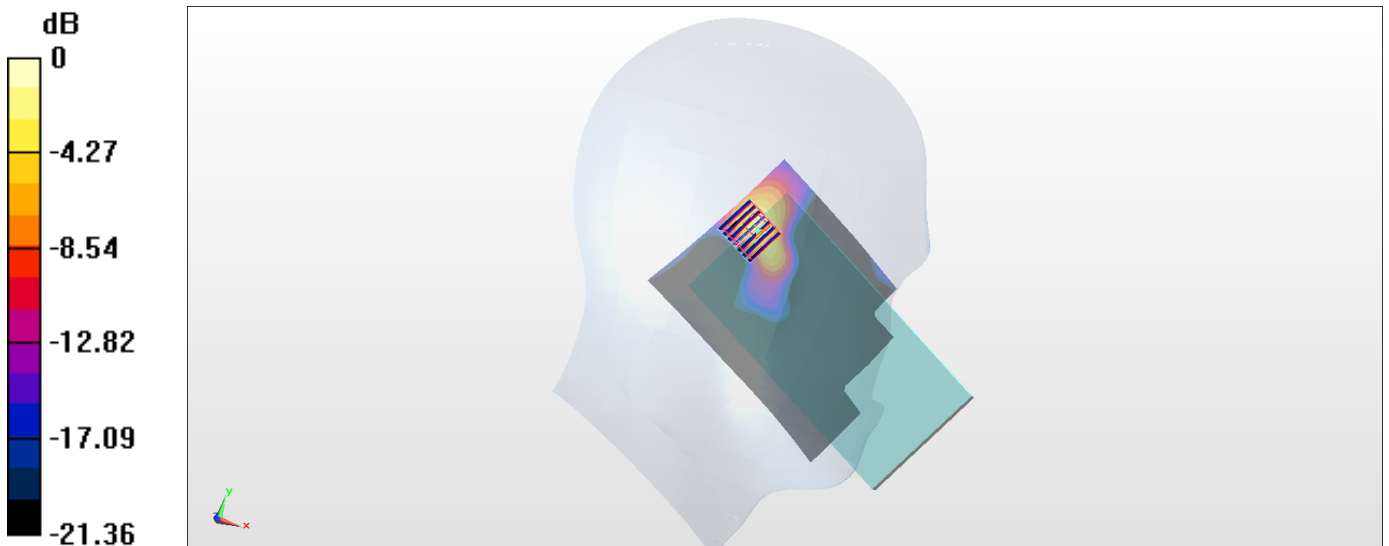
Zoom Scan (7x7x7)/Cube 0: Measurement grid: dx=4mm, dy=4mm, dz=1.4mm

Reference Value = 11.32 V/m; Power Drift = 0.06 dB

Peak SAR (extrapolated) = 2.00 W/kg

SAR(1 g) = 0.551 W/kg; SAR(10 g) = 0.175 W/kg

Maximum value of SAR (measured) = 1.30 W/kg



0 dB = 1.30 W/kg = 1.14 dBW/kg

#12_GSM850_GPRS (4 Tx slots)_Left Side_10mm_Ch128

Communication System: GSM850; Frequency: 824.2 MHz; Duty Cycle: 1:2.08

Medium: MSL_850_170530 Medium parameters used: $f = 824.2$ MHz; $\sigma = 0.969$ S/m; $\epsilon_r = 57.129$; $\rho = 1000$ kg/m³

Ambient Temperature : 23.5 °C ; Liquid Temperature : 22.5 °C

DASY5 Configuration:

- Probe: EX3DV4 - SN3976; ConvF(10.41, 10.41, 10.41); Calibrated: 2017/2/21;
- Sensor-Surface: 1.4mm (Mechanical Surface Detection)
- Electronics: DAE4 Sn1424; Calibrated: 2017/2/16
- Phantom: SAM-Right; Type: SAM; Serial: TP-1303
- Measurement SW: DASY52, Version 52.8 (8); SEMCAD X Version 14.6.10 (7373)

Area Scan (41x121x1): Interpolated grid: dx=1.500 mm, dy=1.500 mm

Maximum value of SAR (interpolated) = 0.522 W/kg

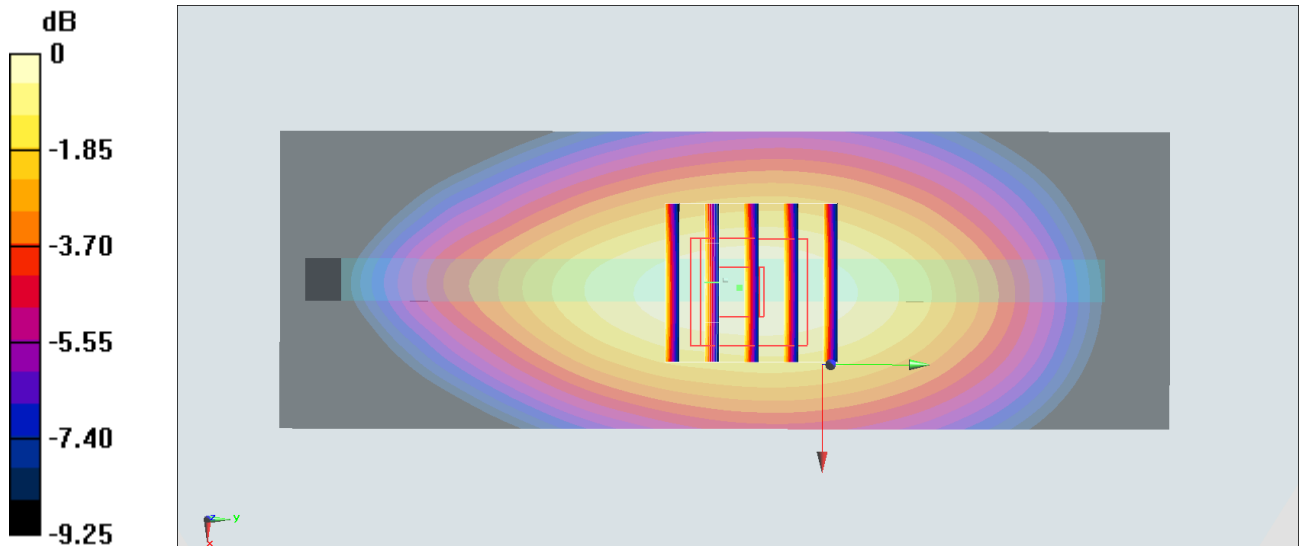
Zoom Scan (5x5x7)/Cube 0: Measurement grid: dx=8mm, dy=8mm, dz=5mm

Reference Value = 24.30 V/m; Power Drift = -0.07 dB

Peak SAR (extrapolated) = 0.589 W/kg

SAR(1 g) = 0.396 W/kg; SAR(10 g) = 0.277 W/kg

Maximum value of SAR (measured) = 0.515 W/kg



0 dB = 0.515 W/kg = -2.88 dBW/kg

#13_GSM1900_GPRS (3 Tx slots)_Back_10mm_Ch810

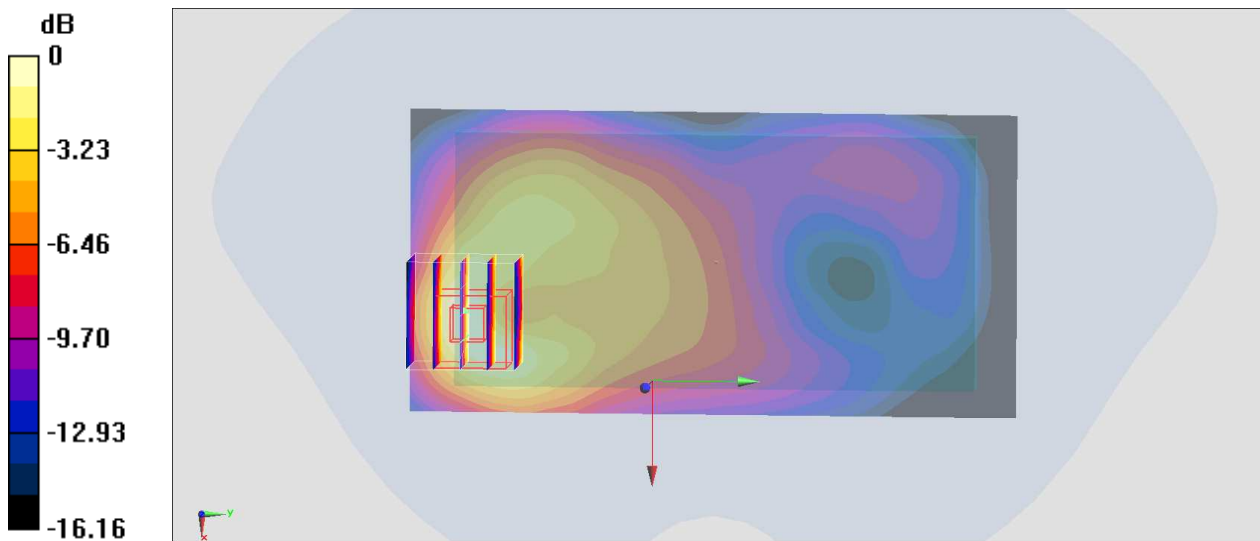
Communication System: PCS; Frequency: 1909.8 MHz; Duty Cycle: 1:2.77
Medium: MSL_1900_170529 Medium parameters used: $f = 1910$ MHz; $\sigma = 1.554$ S/m; $\epsilon_r = 54.562$;
 $\rho = 1000$ kg/m³
Ambient Temperature : 23.5 °C; Liquid Temperature : 22.5 °C

DASY5 Configuration:

- Probe: ES3DV3 - SN3169; ConvF(4.72, 4.72, 4.72); Calibrated: 2017/5/11;
- Sensor-Surface: 3mm (Mechanical Surface Detection)
- Electronics: DAE4 Sn853; Calibrated: 2016/7/11
- Phantom: SAM-Right; Type: SAM; Serial: TP-1303
- Measurement SW: DASY52, Version 52.8 (8); SEMCAD X Version 14.6.10 (7373)

Area Scan (61x121x1): Interpolated grid: dx=1.500 mm, dy=1.500 mm
Maximum value of SAR (interpolated) = 0.732 W/kg

Zoom Scan (5x5x7)/Cube 0: Measurement grid: dx=8mm, dy=8mm, dz=5mm
Reference Value = 12.63 V/m; Power Drift = -0.14 dB
Peak SAR (extrapolated) = 0.981 W/kg
SAR(1 g) = 0.563 W/kg; SAR(10 g) = 0.306 W/kg
Maximum value of SAR (measured) = 0.699 W/kg



0 dB = 0.699 W/kg = -1.56 dBW/kg

#14_WCDMA II_RMC 12.2Kbps_Back_10mm_Ch9538

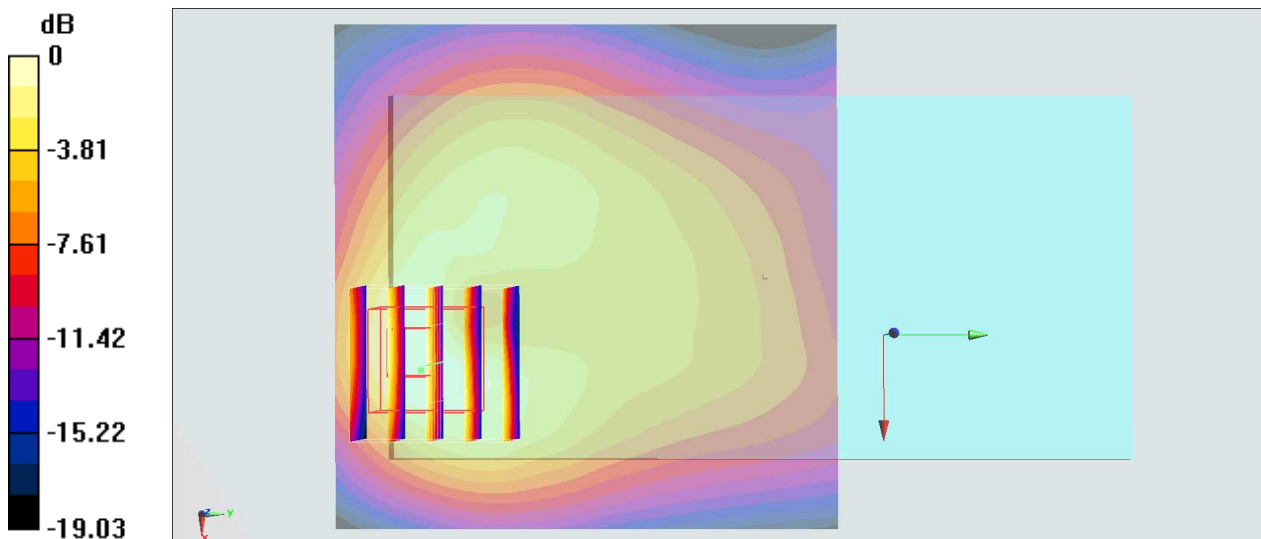
Communication System: WCDMA ; Frequency: 1907.6 MHz;Duty Cycle: 1:1
Medium: MSL_1900_170529 Medium parameters used: $f = 1908$ MHz; $\sigma = 1.553$ S/m; $\epsilon_r = 54.571$;
 $\rho = 1000$ kg/m³
Ambient Temperature : 23.5 °C; Liquid Temperature : 22.5 °C

DASY5 Configuration:

- Probe: ES3DV3 - SN3169; ConvF(4.72, 4.72, 4.72); Calibrated: 2017/5/11;
- Sensor-Surface: 3mm (Mechanical Surface Detection)
- Electronics: DAE4 Sn853; Calibrated: 2016/7/11
- Phantom: SAM-Right; Type: SAM; Serial: TP-1303
- Measurement SW: DASY52, Version 52.8 (8);SEMCAD X Version 14.6.10 (7373)

Area Scan (71x71x1): Interpolated grid: dx=1.500 mm, dy=1.500 mm
Maximum value of SAR (interpolated) = 0.773 W/kg

Zoom Scan (5x5x7)/Cube 0: Measurement grid: dx=8mm, dy=8mm, dz=5mm
Reference Value = 17.02 V/m; Power Drift = -0.11 dB
Peak SAR (extrapolated) = 1.04 W/kg
SAR(1 g) = 0.589 W/kg; SAR(10 g) = 0.312 W/kg
Maximum value of SAR (measured) = 0.707 W/kg



0 dB = 0.707 W/kg = -1.51 dBW/kg

#15_WCDMA V_RMC 12.2Kbps_Back_10mm_Ch4132

Communication System: WCDMA; Frequency: 826.4 MHz; Duty Cycle: 1:1

Medium: MSL_850_170530 Medium parameters used: $f = 826.4$ MHz; $\sigma = 0.97$ S/m; $\epsilon_r = 57.114$; $\rho = 1000$ kg/m³

Ambient Temperature : 23.5 °C ; Liquid Temperature : 22.5 °C

DASY5 Configuration:

- Probe: EX3DV4 - SN3976; ConvF(10.41, 10.41, 10.41); Calibrated: 2017/2/21;
- Sensor-Surface: 1.4mm (Mechanical Surface Detection)
- Electronics: DAE4 Sn1424; Calibrated: 2017/2/16
- Phantom: SAM-Right; Type: SAM; Serial: TP-1303
- Measurement SW: DASY52, Version 52.8 (8); SEMCAD X Version 14.6.10 (7373)

Area Scan (61x121x1): Interpolated grid: dx=1.500 mm, dy=1.500 mm

Maximum value of SAR (interpolated) = 0.427 W/kg

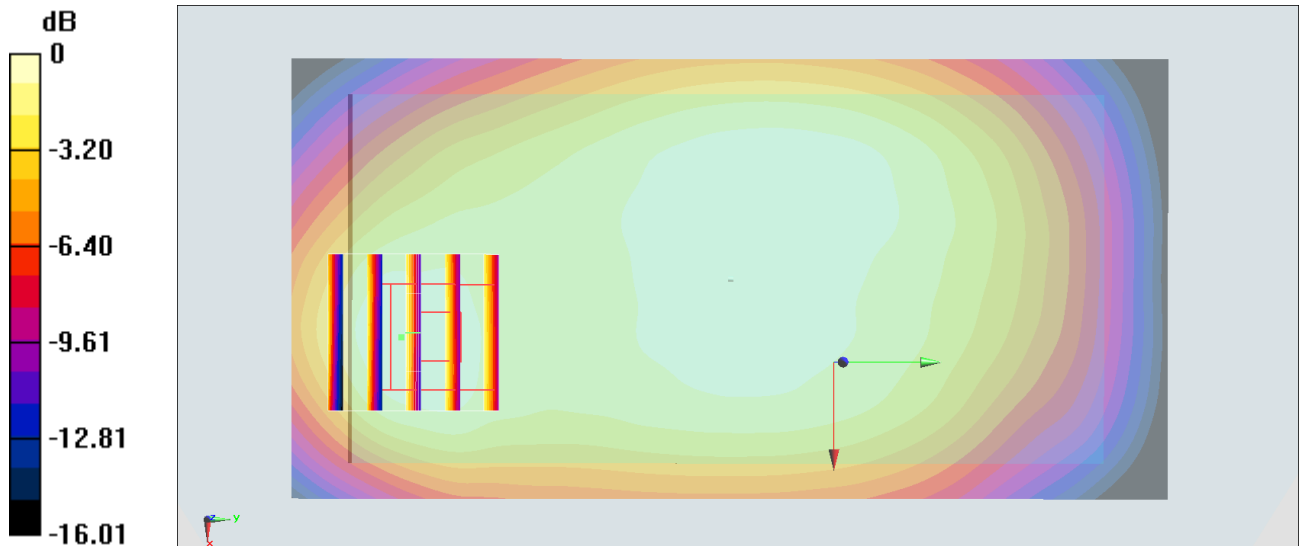
Zoom Scan (5x5x7)/Cube 0: Measurement grid: dx=8mm, dy=8mm, dz=5mm

Reference Value = 21.57 V/m; Power Drift = -0.10 dB

Peak SAR (extrapolated) = 0.522 W/kg

SAR(1 g) = 0.302 W/kg; SAR(10 g) = 0.195 W/kg

Maximum value of SAR (measured) = 0.425 W/kg



0 dB = 0.425 W/kg = -3.72 dBW/kg

#16_LTE Band 5_10M_QPSK_1_0_Back_10mm_Ch20525

Communication System: LTE; Frequency: 836.5 MHz; Duty Cycle: 1:1

Medium: MSL_850_170530 Medium parameters used : $f = 836.5$ MHz; $\sigma = 0.98$ S/m; $\epsilon_r = 57.026$; $\rho = 1000$ kg/m³

Ambient Temperature : 23.5 °C ; Liquid Temperature : 22.5 °C

DASY5 Configuration:

- Probe: EX3DV4 - SN3976; ConvF(10.41, 10.41, 10.41); Calibrated: 2017/2/21;
- Sensor-Surface: 1.4mm (Mechanical Surface Detection)
- Electronics: DAE4 Sn1424; Calibrated: 2017/2/16
- Phantom: SAM-Right; Type: SAM; Serial: TP-1303
- Measurement SW: DASY52, Version 52.8 (8); SEMCAD X Version 14.6.10 (7373)

Area Scan (61x121x1): Interpolated grid: dx=1.500 mm, dy=1.500 mm

Maximum value of SAR (interpolated) = 0.469 W/kg

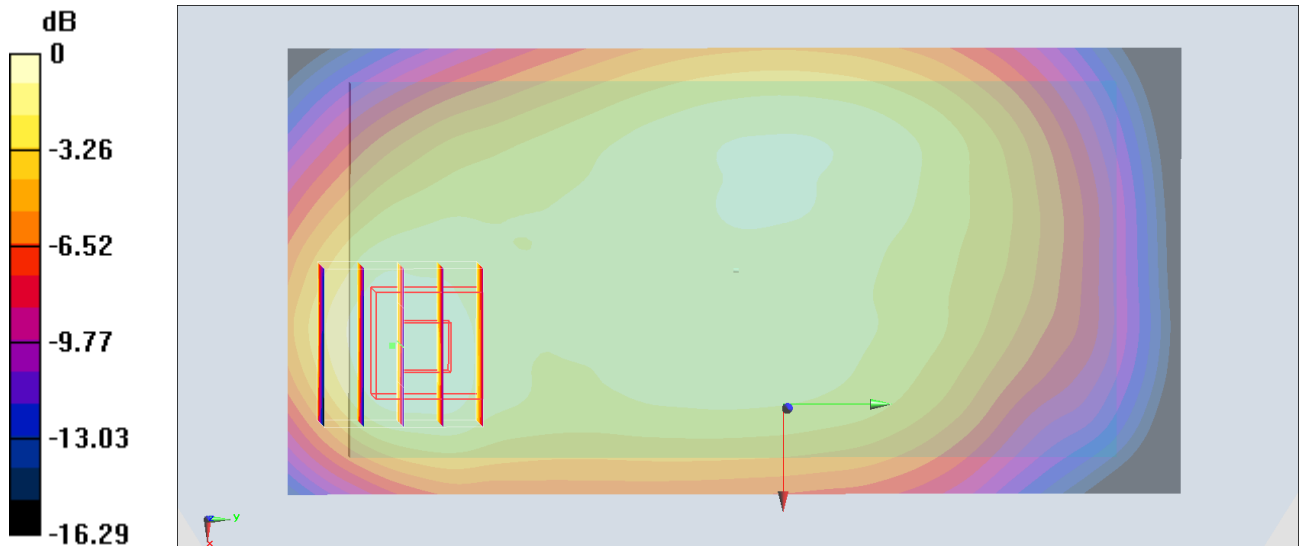
Zoom Scan (5x5x7)/Cube 0: Measurement grid: dx=8mm, dy=8mm, dz=5mm

Reference Value = 19.97 V/m; Power Drift = -0.10 dB

Peak SAR (extrapolated) = 0.562 W/kg

SAR(1 g) = 0.321 W/kg; SAR(10 g) = 0.203 W/kg

Maximum value of SAR (measured) = 0.445 W/kg



0 dB = 0.445 W/kg = -3.52 dBW/kg

#17_LTE Band 7_20M_QPSK_1_0_Back_10mm_Ch21350

Communication System: LTE; Frequency: 2560 MHz; Duty Cycle: 1:1

Medium: MSL_2600_170523 Medium parameters used: $f = 2560$ MHz; $\sigma = 2.09$ mho/m; $\epsilon_r = 53.2$; $\rho = 1000$ kg/m³

Ambient Temperature : 23.2 °C ; Liquid Temperature : 22.2 °C

DASY4 Configuration:

- Probe: EX3DV4 - SN3955; ConvF(7.42, 7.42, 7.42); Calibrated: 2016/11/24
- Sensor-Surface: 1.4mm (Mechanical Surface Detection)
- Electronics: DAE4 Sn1399; Calibrated: 2016/11/17
- Phantom: SAM_Right; Type: QD000P40CD; Serial: TP:1815
- ;Postprocessing SW: SEMCAD, V1.8 Build 159

Area Scan (81x81x1): Measurement grid: dx=12mm, dy=12mm

Maximum value of SAR (interpolated) = 1.39 mW/g

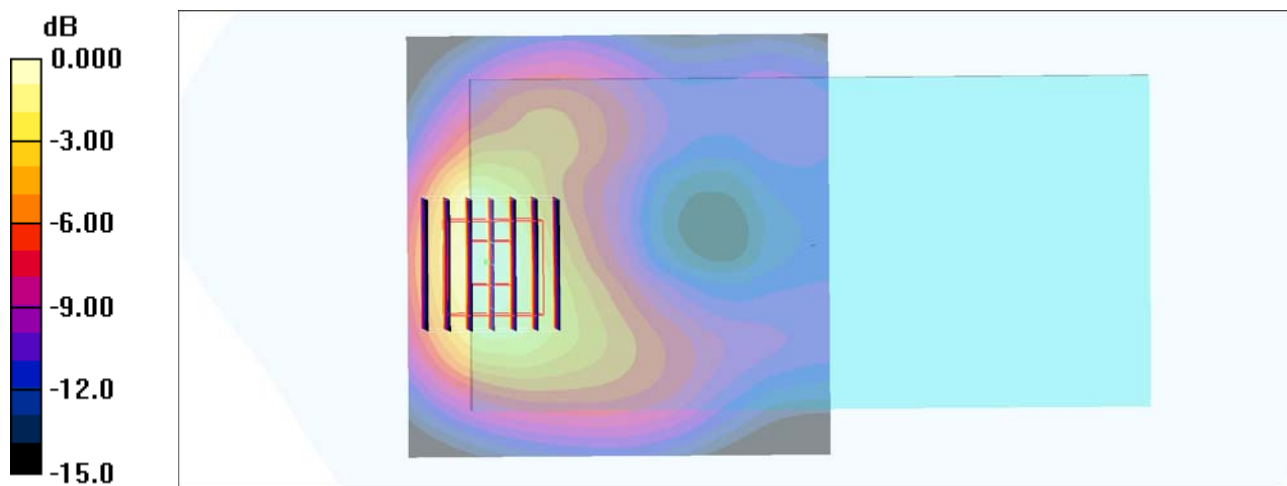
Zoom Scan (7x7x7)/Cube 0: Measurement grid: dx=5mm, dy=5mm, dz=5mm

Reference Value = 24.1 V/m; Power Drift = 0.024 dB

Peak SAR (extrapolated) = 1.73 W/kg

SAR(1 g) = 0.914 mW/g; SAR(10 g) = 0.482 mW/g

Maximum value of SAR (measured) = 1.41 mW/g



#18_LTE Band 41_20M_QPSK_1_0_Back_10mm_Ch40340

Communication System: LTE; Frequency: 2565 MHz; Duty Cycle: 1:1.59

Medium: MSL_2600_170531 Medium parameters used : $f = 2565$ MHz; $\sigma = 2.115$ S/m; $\epsilon_r = 52.841$; $\rho = 1000$ kg/m³

Ambient Temperature : 23.5 °C ; Liquid Temperature : 22.5 °C

DASY5 Configuration:

- Probe: EX3DV4 - SN7375; ConvF(7.16, 7.16, 7.16); Calibrated: 2016/12/8;
- Sensor-Surface: 1.4mm (Mechanical Surface Detection)
- Electronics: DAE4 Sn1305; Calibrated: 2016/12/15
- Phantom: SAM-Right; Type: SAM; Serial: TP-1303
- Measurement SW: DASY52, Version 52.8 (8); SEMCAD X Version 14.6.10 (7373)

Area Scan (81x81x1): Interpolated grid: dx=1.200 mm, dy=1.200 mm

Maximum value of SAR (interpolated) = 1.07 W/kg

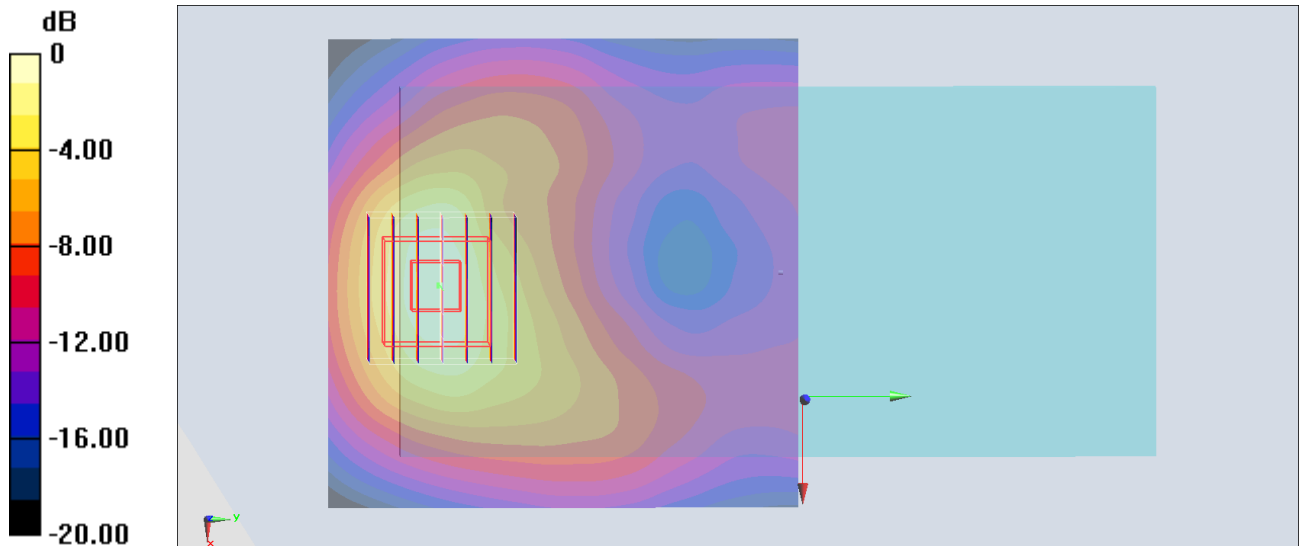
Zoom Scan (7x7x7)/Cube 0: Measurement grid: dx=5mm, dy=5mm, dz=5mm

Reference Value = 21.69 V/m; Power Drift = 0.11 dB

Peak SAR (extrapolated) = 1.36 W/kg

SAR(1 g) = 0.720 W/kg; SAR(10 g) = 0.374 W/kg

Maximum value of SAR (measured) = 1.11 W/kg



0 dB = 1.11 W/kg = 0.45 dBW/kg

#19_WLAN2.4GHz_802.11b 1Mbps_Top Side_10mm_Ch1

Communication System: 802.11b ; Frequency: 2412 MHz;Duty Cycle: 1:1

Medium: MSL_2450_170527 Medium parameters used: $f = 2412$ MHz; $\sigma = 1.881$ S/m; $\epsilon_r = 53.665$;

$\rho = 1000$ kg/m³

Ambient Temperature : 23.5 °C ; Liquid Temperature : 22.5 °C

DASY5 Configuration

- Probe: ES3DV3 - SN3169; ConvF(4.28, 4.28, 4.28); Calibrated: 2017/5/11;
- Sensor-Surface: 3mm (Mechanical Surface Detection)
- Electronics: DAE4 Sn853; Calibrated: 2016/7/11
- Phantom: SAM_Right; Type: QD000P40CD; Serial: S/N:1801
- Measurement SW: DASY52, Version 52.8 (8); SEMCAD X Version 14.6.10 (7373)

Area Scan (51x101x1): Interpolated grid: dx=1.200 mm, dy=1.200 mm

Maximum value of SAR (interpolated) = 0.392 W/kg

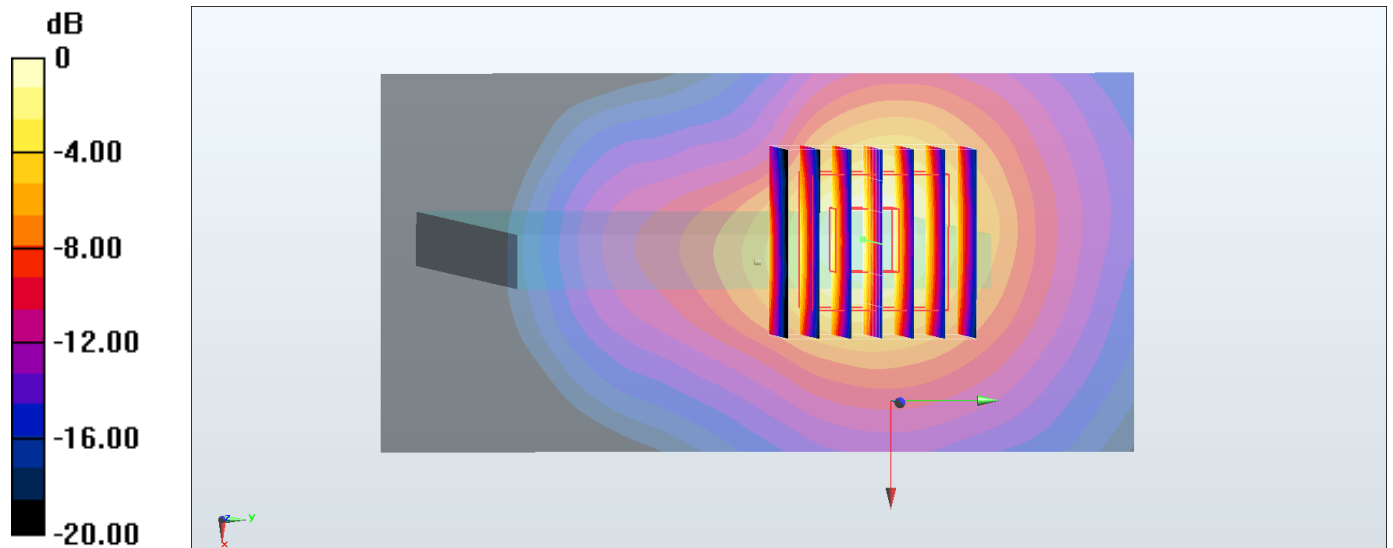
Zoom Scan (7x7x7)/Cube 0: Measurement grid: dx=5mm, dy=5mm, dz=5mm

Reference Value = 10.05 V/m; Power Drift = -0.14 dB

Peak SAR (extrapolated) = 0.557 W/kg

SAR(1 g) = 0.292 W/kg; SAR(10 g) = 0.139 W/kg

Maximum value of SAR (measured) = 0.379 W/kg



0 dB = 0.379 W/kg = -4.21 dBW/kg

#20_WLAN5GHz_802.11a_6Mbps_Back_0mm_Ch64

Communication System: 802.11a ; Frequency: 5320 MHz;Duty Cycle: 1:1.029

Medium: MSL_5G_170530 Medium parameters used: $f = 5320$ MHz; $\sigma = 5.531$ S/m; $\epsilon_r = 47.516$; $\rho = 1000$ kg/m³

Ambient Temperature : 23.2 °C; Liquid Temperature : 22.2 °C

DASY5 Configuration

- Probe: EX3DV4 - SN7375; ConvF(4.57, 4.57, 4.57); Calibrated: 2016/12/8;
- Sensor-Surface: 1.4mm (Mechanical Surface Detection)
- Electronics: DAE4 Sn1305; Calibrated: 2016/12/15
- Phantom: SAM_Left; Type: QD000P40CD; Serial: S/N:1796
- Measurement SW: DASY52, Version 52.8 (8); SEMCAD X Version 14.6.10 (7373)

Area Scan (101x181x1): Interpolated grid: dx=1.000 mm, dy=1.000 mm

Maximum value of SAR (interpolated) = 3.76 W/kg

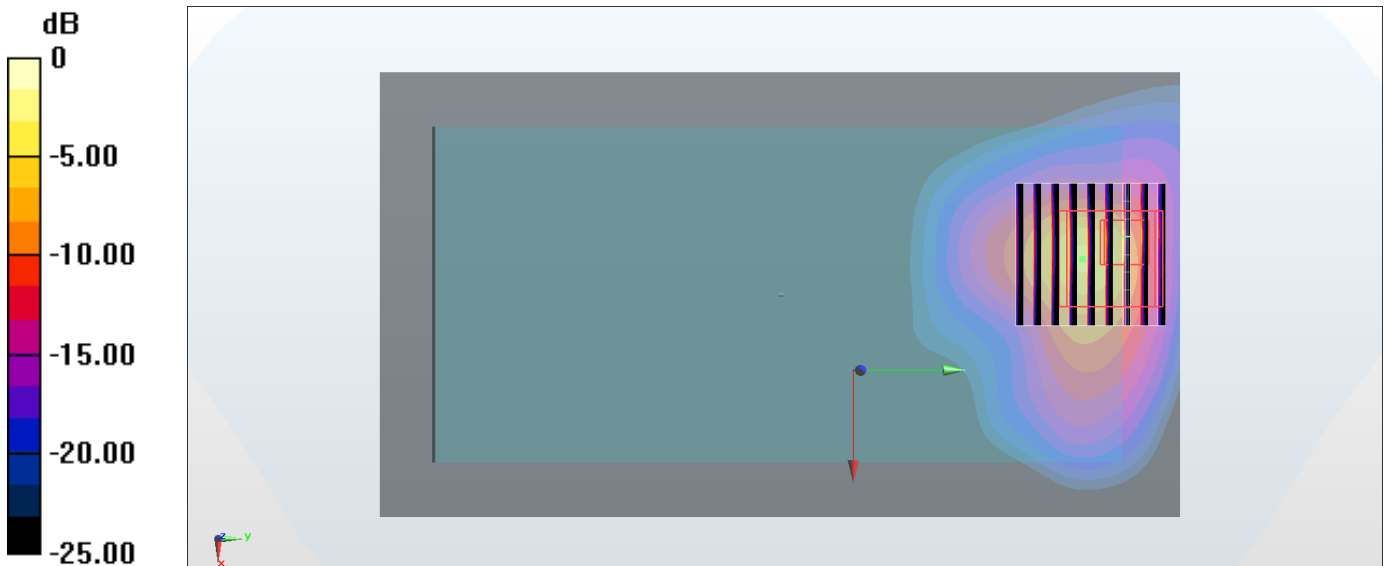
Zoom Scan (9x9x7)/Cube 0: Measurement grid: dx=4mm, dy=4mm, dz=1.4mm

Reference Value = 20.18 V/m; Power Drift = 0.01 dB

Peak SAR (extrapolated) = 27.6 W/kg

SAR(1 g) = 3.47 W/kg; SAR(10 g) = 0.790 W/kg

Maximum value of SAR (measured) = 10.7 W/kg



0 dB = 10.7 W/kg = 10.29 dBW/kg

#21_WLAN5GHz_802.11a 6Mbps_Back_0mm_Ch100

Communication System: 802.11a ; Frequency: 5500 MHz;Duty Cycle: 1:1.029

Medium: MSL_5G_170530 Medium parameters used: $f = 5500$ MHz; $\sigma = 5.759$ S/m; $\epsilon_r = 47.222$; $\rho = 1000$ kg/m³

Ambient Temperature : 23.2 °C; Liquid Temperature : 22.2 °C

DASY5 Configuration

- Probe: EX3DV4 - SN7375; ConvF(4.2, 4.2, 4.2); Calibrated: 2016/12/8;
- Sensor-Surface: 1.4mm (Mechanical Surface Detection)
- Electronics: DAE4 Sn1305; Calibrated: 2016/12/15
- Phantom: SAM_Left; Type: QD000P40CD; Serial: S/N:1796
- Measurement SW: DASY52, Version 52.8 (8); SEMCAD X Version 14.6.10 (7373)

Area Scan (101x181x1): Interpolated grid: dx=1.000 mm, dy=1.000 mm

Maximum value of SAR (interpolated) = 3.20 W/kg

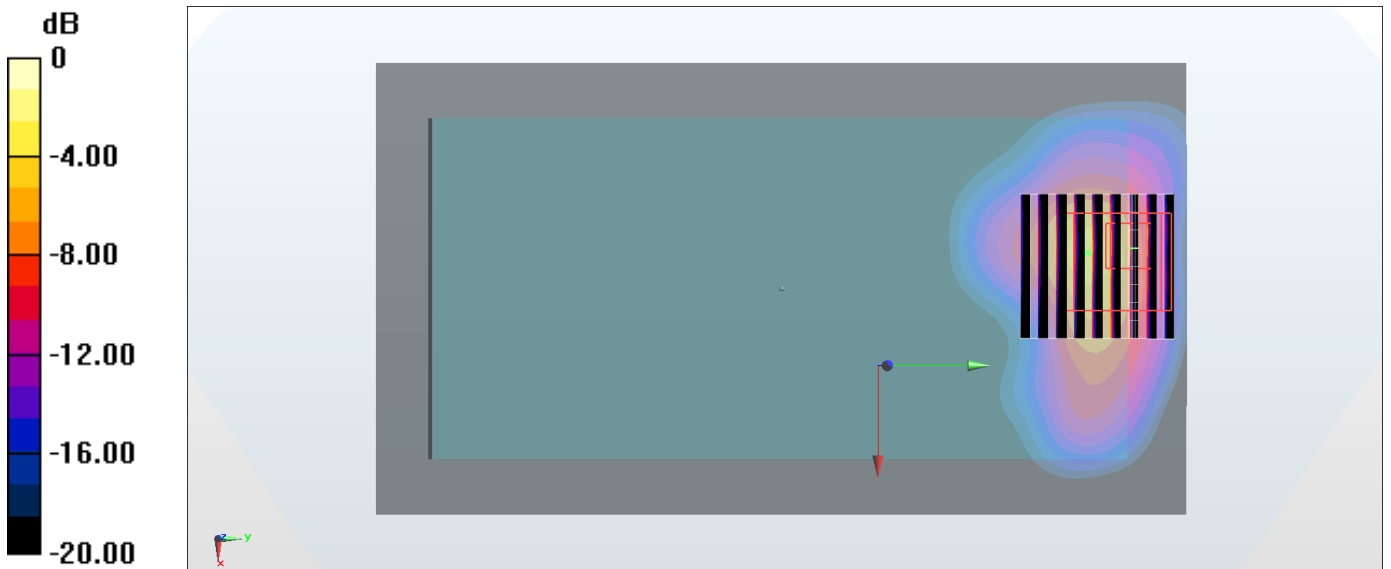
Zoom Scan (9x9x7)/Cube 0: Measurement grid: dx=4mm, dy=4mm, dz=1.4mm

Reference Value = 18.22 V/m; Power Drift = -0.04 dB

Peak SAR (extrapolated) = 19.8 W/kg

SAR(1 g) = 2.77 W/kg; SAR(10 g) = 0.706 W/kg

Maximum value of SAR (measured) = 8.95 W/kg



0 dB = 8.95 W/kg = 9.52 dBW/kg

#22_WLAN5GHz_802.11a 6Mbps_Back_0mm_Ch149

Communication System: 802.11a ; Frequency: 5745 MHz; Duty Cycle: 1:1.029

Medium: MSL_5G_170530 Medium parameters used: $f = 5745$ MHz; $\sigma = 6.097$ S/m; $\epsilon_r = 46.804$; $\rho = 1000$ kg/m³

Ambient Temperature : 23.2 °C; Liquid Temperature : 22.2 °C

DASY5 Configuration

- Probe: EX3DV4 - SN7375; ConvF(4.08, 4.08, 4.08); Calibrated: 2016/12/8;
- Sensor-Surface: 1.4mm (Mechanical Surface Detection)
- Electronics: DAE4 Sn1305; Calibrated: 2016/12/15
- Phantom: SAM_Left; Type: QD000P40CD; Serial: S/N:1796
- Measurement SW: DASY52, Version 52.8 (8); SEMCAD X Version 14.6.10 (7373)

Area Scan (101x181x1): Interpolated grid: dx=1.000 mm, dy=1.000 mm

Maximum value of SAR (interpolated) = 4.10 W/kg

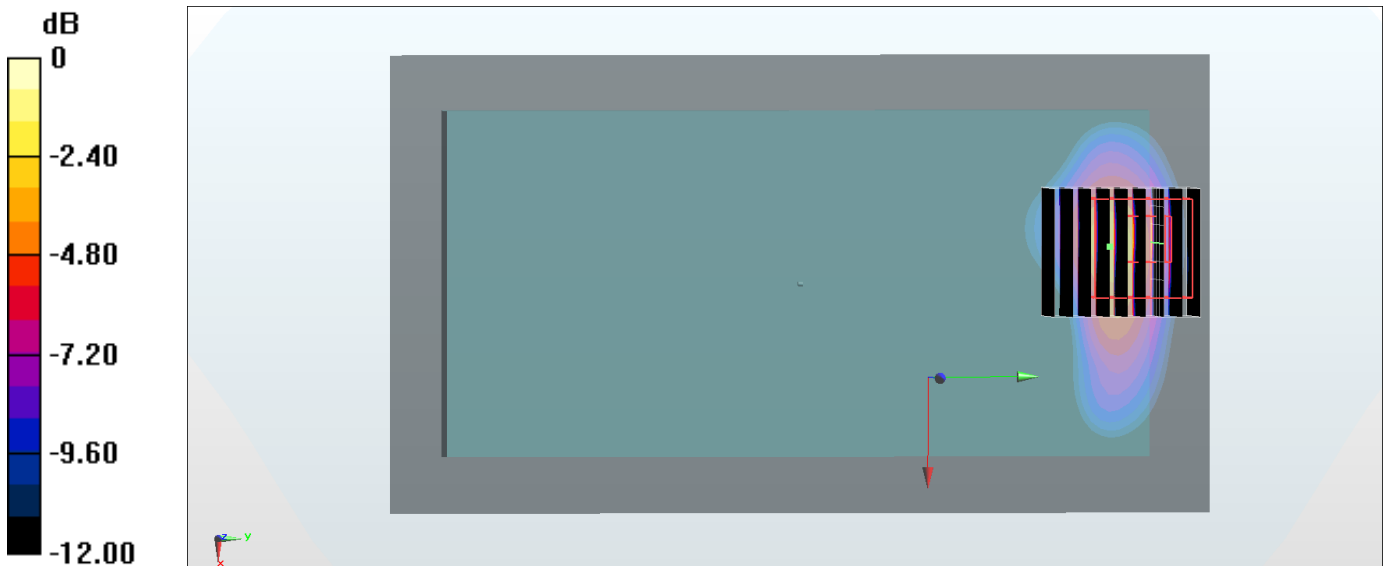
Zoom Scan (8x9x7)/Cube 0: Measurement grid: dx=4mm, dy=4mm, dz=1.4mm

Reference Value = 20.89 V/m; Power Drift = -0.03 dB

Peak SAR (extrapolated) = 17.2 W/kg

SAR(1 g) = 2.74 W/kg; SAR(10 g) = 0.715 W/kg

Maximum value of SAR (measured) = 8.47 W/kg



0 dB = 8.47 W/kg = 9.28 dBW/kg

#23_GSM850_GPRS (4 Tx slots)_Back_15mm_Ch128

Communication System: GSM850; Frequency: 824.2 MHz; Duty Cycle: 1:2.08

Medium: MSL_850_170530 Medium parameters used: $f = 824.2$ MHz; $\sigma = 0.969$ S/m; $\epsilon_r = 57.129$; $\rho = 1000$ kg/m³

Ambient Temperature : 23.5 °C ; Liquid Temperature : 22.5 °C

DASY5 Configuration:

- Probe: EX3DV4 - SN3976; ConvF(10.41, 10.41, 10.41); Calibrated: 2017/2/21;
- Sensor-Surface: 1.4mm (Mechanical Surface Detection)
- Electronics: DAE4 Sn1424; Calibrated: 2017/2/16
- Phantom: SAM-Right; Type: SAM; Serial: TP-1303
- Measurement SW: DASY52, Version 52.8 (8); SEMCAD X Version 14.6.10 (7373)

Area Scan (71x121x1): Interpolated grid: dx=1.500 mm, dy=1.500 mm

Maximum value of SAR (interpolated) = 0.483 W/kg

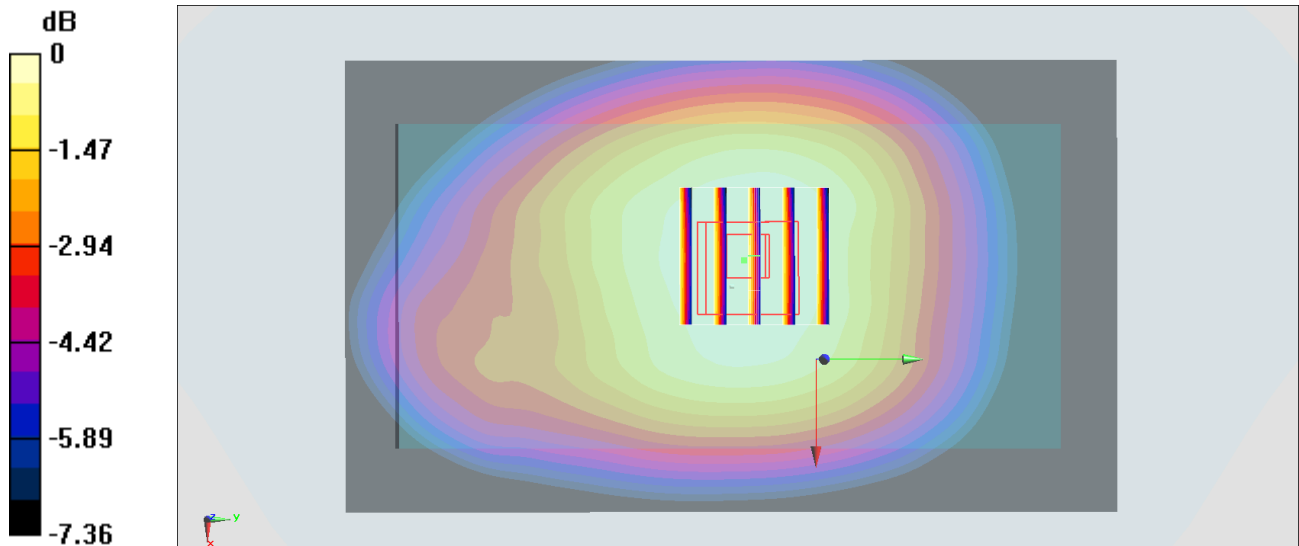
Zoom Scan (5x5x7)/Cube 0: Measurement grid: dx=8mm, dy=8mm, dz=5mm

Reference Value = 23.25 V/m; Power Drift = 0.02 dB

Peak SAR (extrapolated) = 0.532 W/kg

SAR(1 g) = 0.404 W/kg; SAR(10 g) = 0.317 W/kg

Maximum value of SAR (measured) = 0.486 W/kg



0 dB = 0.486 W/kg = -3.13 dBW/kg

#24_GSM1900_GPRS (3 Tx slots)_Back_15mm_Ch810

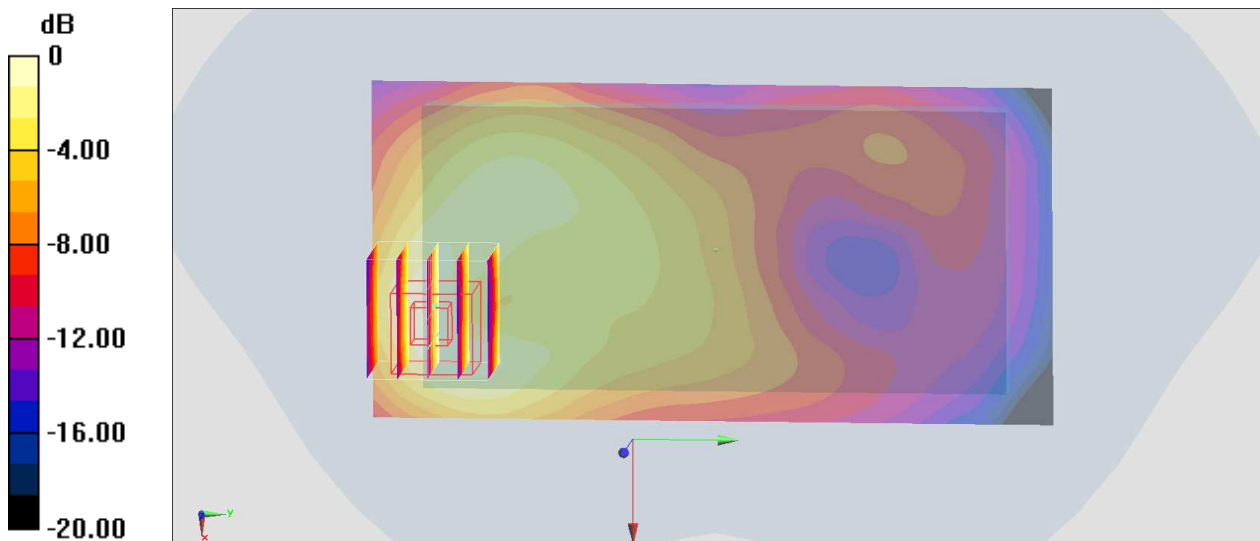
Communication System: PCS ; Frequency: 1909.8 MHz;Duty Cycle: 1:2.77
Medium: MSL_1900_170529 Medium parameters used: $f = 1910$ MHz; $\sigma = 1.554$ S/m; $\epsilon_r = 54.562$;
 $\rho = 1000$ kg/m³
Ambient Temperature : 23.5 °C ; Liquid Temperature : 22.5 °C

DASY5 Configuration:

- Probe: ES3DV3 - SN3169; ConvF(4.72, 4.72, 4.72); Calibrated: 2017/5/11;
- Sensor-Surface: 3mm (Mechanical Surface Detection)
- Electronics: DAE4 Sn853; Calibrated: 2016/7/11
- Phantom: SAM-Right; Type: SAM; Serial: TP-1303
- Measurement SW: DASY52, Version 52.8 (8);SEMCAD X Version 14.6.10 (7373)

Area Scan (61x121x1): Interpolated grid: dx=1.500 mm, dy=1.500 mm
Maximum value of SAR (interpolated) = 0.323 W/kg

Zoom Scan (5x5x7)/Cube 0: Measurement grid: dx=8mm, dy=8mm, dz=5mm
Reference Value = 9.646 V/m; Power Drift = 0.02 dB
Peak SAR (extrapolated) = 0.447 W/kg
SAR(1 g) = 0.271 W/kg; SAR(10 g) = 0.157 W/kg
Maximum value of SAR (measured) = 0.327 W/kg



0 dB = 0.327 W/kg = -4.85 dBW/kg

#25_WCDMA II_RMC 12.2Kbps_Back_15mm_Ch9538

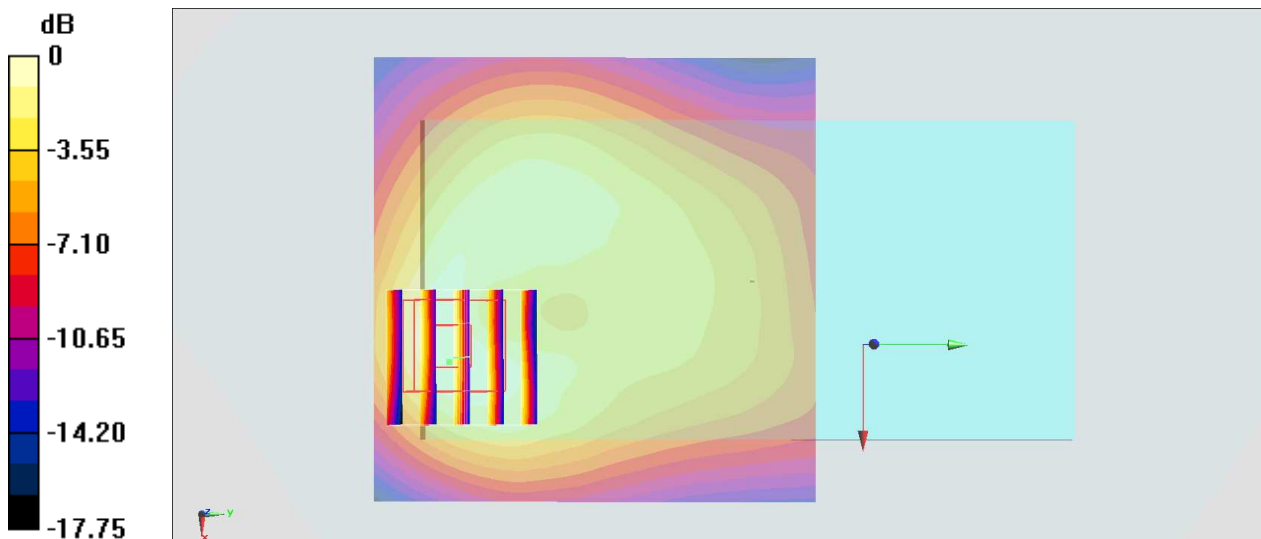
Communication System: WCDMA; Frequency: 1907.6 MHz; Duty Cycle: 1:1
Medium: MSL_1900_170529 Medium parameters used: $f = 1908$ MHz; $\sigma = 1.553$ S/m; $\epsilon_r = 54.571$;
 $\rho = 1000$ kg/m³
Ambient Temperature : 23.5 °C; Liquid Temperature : 22.5 °C

DASY5 Configuration:

- Probe: ES3DV3 - SN3169; ConvF(4.72, 4.72, 4.72); Calibrated: 2017/5/11;
- Sensor-Surface: 3mm (Mechanical Surface Detection)
- Electronics: DAE4 Sn853; Calibrated: 2016/7/11
- Phantom: SAM-Right; Type: SAM; Serial: TP-1303
- Measurement SW: DASY52, Version 52.8 (8); SEMCAD X Version 14.6.10 (7373)

Area Scan (71x71x1): Interpolated grid: dx=1.500 mm, dy=1.500 mm
Maximum value of SAR (interpolated) = 0.491 W/kg

Zoom Scan (5x5x7)/Cube 0: Measurement grid: dx=8mm, dy=8mm, dz=5mm
Reference Value = 15.70 V/m; Power Drift = 0.00 dB
Peak SAR (extrapolated) = 0.644 W/kg
SAR(1 g) = 0.391 W/kg; SAR(10 g) = 0.225 W/kg
Maximum value of SAR (measured) = 0.469 W/kg



0 dB = 0.469 W/kg = -3.29 dBW/kg

#26_WCDMA V_RMC 12.2Kbps_Back_15mm_Ch4132

Communication System: WCDMA; Frequency: 826.4 MHz; Duty Cycle: 1:1

Medium: MSL_850_170530 Medium parameters used: $f = 826.4$ MHz; $\sigma = 0.97$ S/m; $\epsilon_r = 57.114$; $\rho = 1000$ kg/m³

Ambient Temperature : 23.5 °C ; Liquid Temperature : 22.5 °C

DASY5 Configuration:

- Probe: EX3DV4 - SN3976; ConvF(10.41, 10.41, 10.41); Calibrated: 2017/2/21;
- Sensor-Surface: 1.4mm (Mechanical Surface Detection)
- Electronics: DAE4 Sn1424; Calibrated: 2017/2/16
- Phantom: SAM-Right; Type: SAM; Serial: TP-1303
- Measurement SW: DASY52, Version 52.8 (8); SEMCAD X Version 14.6.10 (7373)

Area Scan (61x121x1): Interpolated grid: dx=1.500 mm, dy=1.500 mm

Maximum value of SAR (interpolated) = 0.373 W/kg

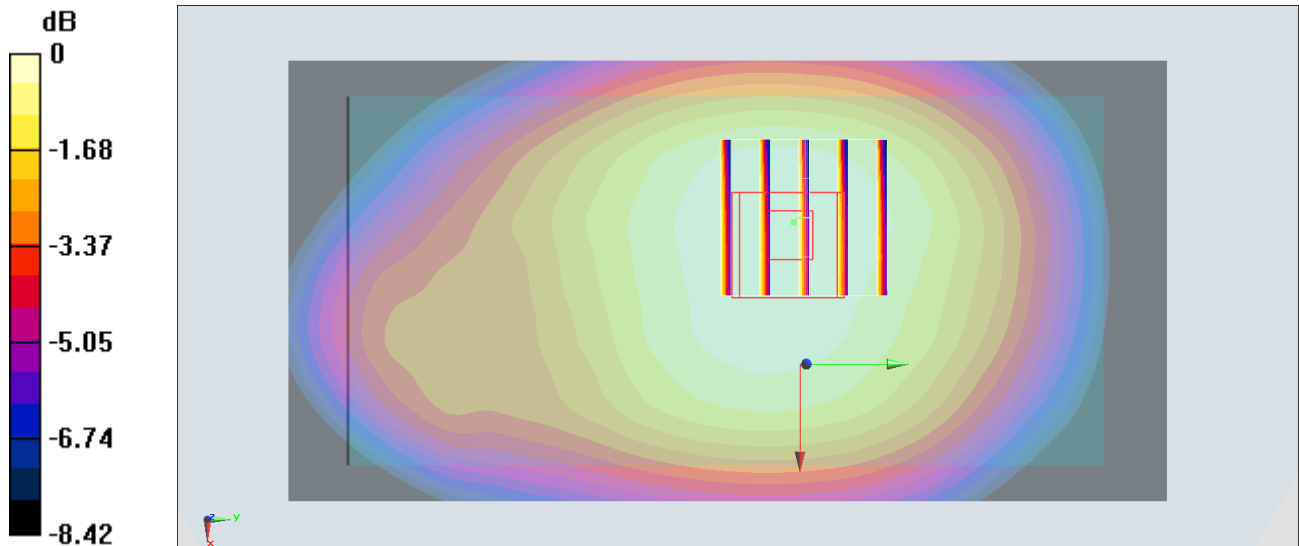
Zoom Scan (5x5x7)/Cube 0: Measurement grid: dx=8mm, dy=8mm, dz=5mm

Reference Value = 19.88 V/m; Power Drift = -0.02 dB

Peak SAR (extrapolated) = 0.400 W/kg

SAR(1 g) = 0.304 W/kg; SAR(10 g) = 0.237 W/kg

Maximum value of SAR (measured) = 0.365 W/kg



0 dB = 0.365 W/kg = -4.38 dBW/kg

#27_LTE Band 5_10M_QPSK_1_0_Back_15mm_Ch20525

Communication System: LTE; Frequency: 836.5 MHz; Duty Cycle: 1:1

Medium: MSL_850_170530 Medium parameters used : $f = 836.5$ MHz; $\sigma = 0.98$ S/m; $\epsilon_r = 57.026$; $\rho = 1000$ kg/m³

Ambient Temperature : 23.5 °C ; Liquid Temperature : 22.5 °C

DASY5 Configuration:

- Probe: EX3DV4 - SN3976; ConvF(10.41, 10.41, 10.41); Calibrated: 2017/2/21;
- Sensor-Surface: 1.4mm (Mechanical Surface Detection)
- Electronics: DAE4 Sn1424; Calibrated: 2017/2/16
- Phantom: SAM-Right; Type: SAM; Serial: TP-1303
- Measurement SW: DASY52, Version 52.8 (8); SEMCAD X Version 14.6.10 (7373)

Area Scan (61x121x1): Interpolated grid: dx=1.500 mm, dy=1.500 mm

Maximum value of SAR (interpolated) = 0.313 W/kg

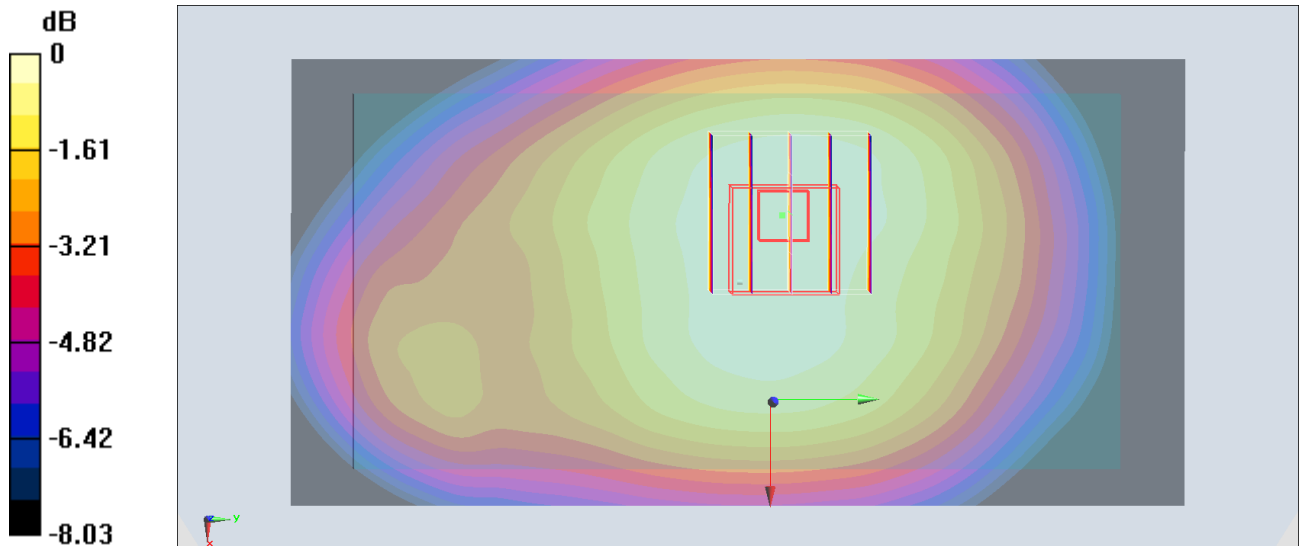
Zoom Scan (5x5x7)/Cube 0: Measurement grid: dx=8mm, dy=8mm, dz=5mm

Reference Value = 18.43 V/m; Power Drift = 0.01 dB

Peak SAR (extrapolated) = 0.345 W/kg

SAR(1 g) = 0.259 W/kg; SAR(10 g) = 0.202 W/kg

Maximum value of SAR (measured) = 0.314 W/kg



0 dB = 0.314 W/kg = -5.03 dBW/kg

#28_LTE Band 7_20M_QPSK_1_0_Back_15mm_Ch21100

Communication System: LTE; Frequency: 2535 MHz; Duty Cycle: 1:1

Medium: MSL_2600_170523 Medium parameters used: $f = 2535$ MHz; $\sigma = 2.05$ mho/m; $\epsilon_r = 53.3$; $\rho = 1000$ kg/m³

Ambient Temperature : 23.2 °C; Liquid Temperature : 22.2 °C

DASY4 Configuration:

- Probe: EX3DV4 - SN3955; ConvF(7.42, 7.42, 7.42); Calibrated: 2016/11/24
- Sensor-Surface: 1.4mm (Mechanical Surface Detection)
- Electronics: DAE4 Sn1399; Calibrated: 2016/11/17
- Phantom: SAM_Right; Type: QD000P40CD; Serial: TP:1815
- ;Postprocessing SW: SEMCAD, V1.8 Build 159

Area Scan (81x91x1): Measurement grid: dx=12mm, dy=12mm

Maximum value of SAR (interpolated) = 0.601 mW/g

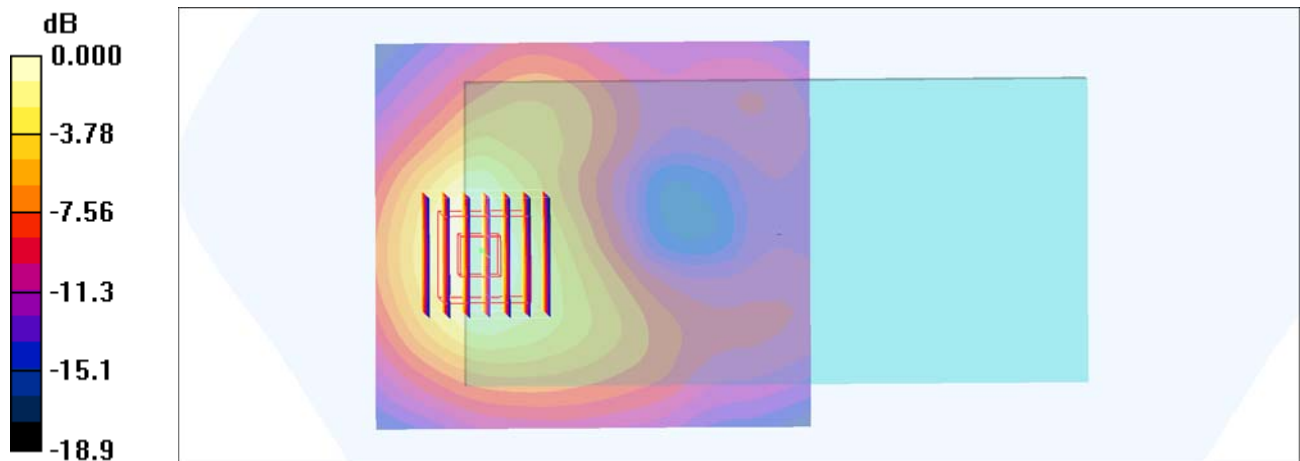
Zoom Scan (7x7x7)/Cube 0: Measurement grid: dx=5mm, dy=5mm, dz=5mm

Reference Value = 16.1 V/m; Power Drift = -0.105 dB

Peak SAR (extrapolated) = 0.688 W/kg

SAR(1 g) = 0.380 mW/g; SAR(10 g) = 0.209 mW/g

Maximum value of SAR (measured) = 0.565 mW/g



0 dB = 0.565mW/g

#29_LTE Band 41_20M_QPSK_50_0_Back_15mm_Ch40340

Communication System: LTE; Frequency: 2565 MHz; Duty Cycle: 1:1.59

Medium: MSL_2600_170531 Medium parameters used: $f = 2565$ MHz; $\sigma = 2.115$ S/m; $\epsilon_r = 52.841$; $\rho = 1000$ kg/m³

Ambient Temperature : 23.5 °C ; Liquid Temperature : 22.5 °C

DASY5 Configuration:

- Probe: EX3DV4 - SN7375; ConvF(7.16, 7.16, 7.16); Calibrated: 2016/12/8;
- Sensor-Surface: 1.4mm (Mechanical Surface Detection)
- Electronics: DAE4 Sn1305; Calibrated: 2016/12/15
- Phantom: SAM-Right; Type: SAM; Serial: TP-1303
- Measurement SW: DASY52, Version 52.8 (8); SEMCAD X Version 14.6.10 (7373)

Area Scan (81x81x1): Interpolated grid: dx=1.200 mm, dy=1.200 mm

Maximum value of SAR (interpolated) = 0.746 W/kg

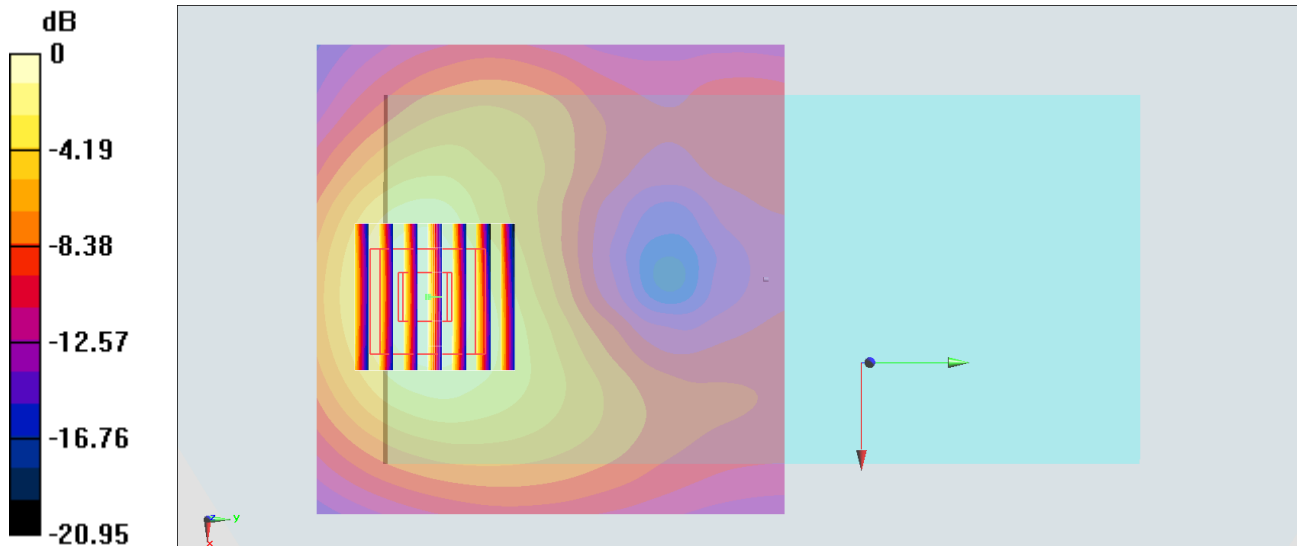
Zoom Scan (7x7x7)/Cube 0: Measurement grid: dx=5mm, dy=5mm, dz=5mm

Reference Value = 18.06 V/m; Power Drift = 0.08 dB

Peak SAR (extrapolated) = 0.896 W/kg

SAR(1 g) = 0.470 W/kg; SAR(10 g) = 0.246 W/kg

Maximum value of SAR (measured) = 0.749 W/kg



0 dB = 0.749 W/kg = -1.26 dBW/kg

#30_WLAN2.4GHz_802.11b 1Mbps_Back_15mm_Ch1

Communication System: 802.11b; Frequency: 2412 MHz; Duty Cycle: 1:1

Medium: MSL_2450_170527 Medium parameters used: $f = 2412$ MHz; $\sigma = 1.881$ S/m; $\epsilon_r = 53.665$; $\rho = 1000$ kg/m³

Ambient Temperature : 23.5 °C ; Liquid Temperature : 22.5 °C

DASY5 Configuration:

- Probe: ES3DV3 SN3169; ConvF(4.28, 4.28, 4.28); Calibrated: 2017/5/11;
- Sensor-Surface: 3mm (Mechanical Surface Detection)
- Electronics: DAE4 Sn853; Calibrated: 2016/7/11
- Phantom: SAM_Right; Type: QD000P40CD; Serial: S/N:1801
- Measurement SW: DASY52, Version 52.8 (8); SEMCAD X Version 14.6.10 (7373)

Area Scan (81x101x1): Interpolated grid: dx=1.200 mm, dy=1.200 mm

Maximum value of SAR (interpolated) = 0.175 W/kg

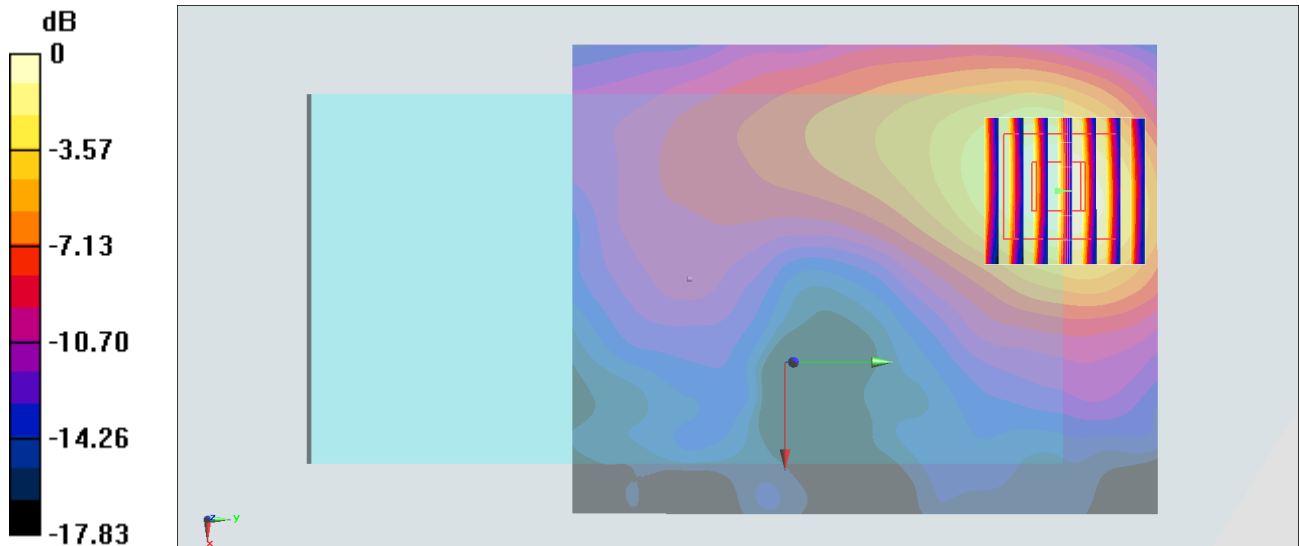
Zoom Scan (7x7x7)/Cube 0: Measurement grid: dx=5mm, dy=5mm, dz=5mm

Reference Value = 8.855 V/m; Power Drift = 0.01 dB

Peak SAR (extrapolated) = 0.244 W/kg

SAR(1 g) = 0.136 W/kg; SAR(10 g) = 0.072 W/kg

Maximum value of SAR (measured) = 0.170 W/kg



0 dB = 0.170 W/kg = -7.70 dBW/kg

#31_WLAN5GHz_802.11a_6Mbps_Back_15mm_Ch64

Communication System: 802.11a ; Frequency: 5320 MHz;Duty Cycle: 1:1.029

Medium: MSL_5G_170530 Medium parameters used: $f = 5320$ MHz; $\sigma = 5.531$ S/m; $\epsilon_r = 47.516$; $\rho = 1000$ kg/m³

Ambient Temperature : 23.2 °C; Liquid Temperature : 22.2 °C

DASY5 Configuration

- Probe: EX3DV4 - SN7375; ConvF(4.57, 4.57, 4.57); Calibrated: 2016/12/8;
- Sensor-Surface: 1.4mm (Mechanical Surface Detection)
- Electronics: DAE4 Sn1305; Calibrated: 2016/12/15
- Phantom: SAM_Left; Type: QD000P40CD; Serial: S/N:1796
- Measurement SW: DASY52, Version 52.8 (8); SEMCAD X Version 14.6.10 (7373)

Area Scan (101x181x1): Interpolated grid: dx=1.000 mm, dy=1.000 mm

Maximum value of SAR (interpolated) = 0.308 W/kg

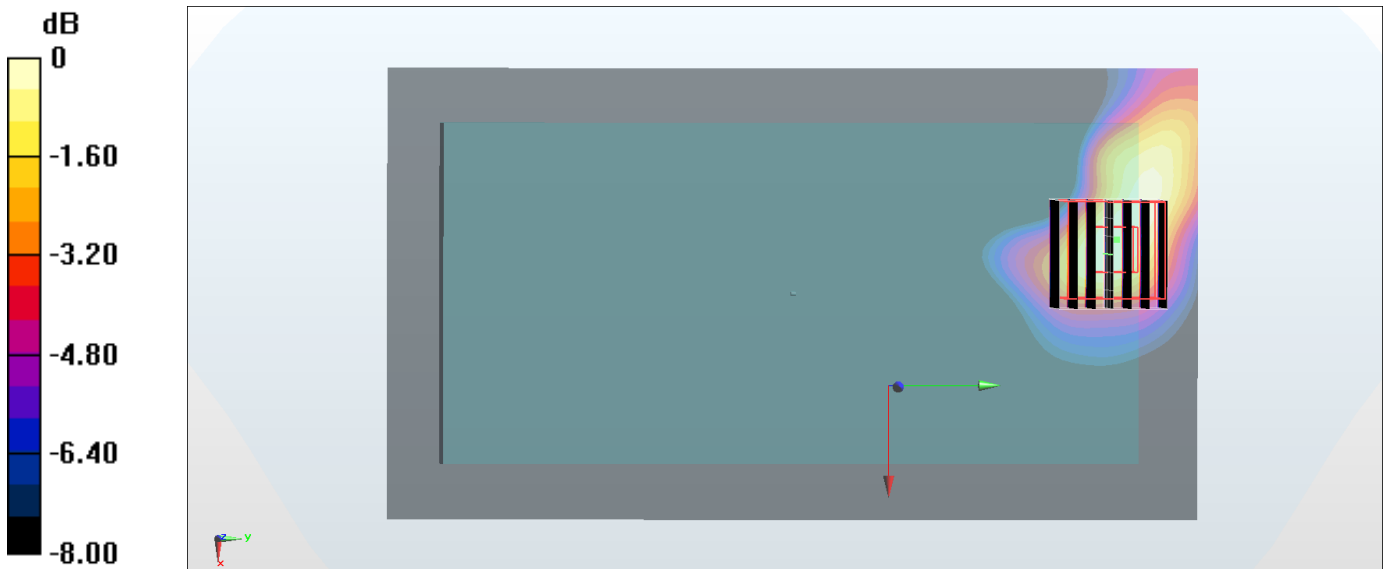
Zoom Scan (7x7x7)/Cube 0: Measurement grid: dx=4mm, dy=4mm, dz=1.4mm

Reference Value = 5.796 V/m; Power Drift = 0.15 dB

Peak SAR (extrapolated) = 0.478 W/kg

SAR(1 g) = 0.131 W/kg; SAR(10 g) = 0.058 W/kg

Maximum value of SAR (measured) = 0.300 W/kg



0 dB = 0.300 W/kg = -5.23 dBW/kg

#32_WLAN5GHz_802.11a_6Mbps_Back_15mm_Ch100

Communication System: 802.11a ; Frequency: 5500 MHz;Duty Cycle: 1:1.029

Medium: MSL_5G_170530 Medium parameters used: $f = 5500$ MHz; $\sigma = 5.759$ S/m; $\epsilon_r = 47.222$; $\rho = 1000$ kg/m³

Ambient Temperature : 23.2 °C; Liquid Temperature : 22.2 °C

DASY5 Configuration

- Probe: EX3DV4 - SN7375; ConvF(4.2, 4.2, 4.2); Calibrated: 2016/12/8;
- Sensor-Surface: 1.4mm (Mechanical Surface Detection)
- Electronics: DAE4 Sn1305; Calibrated: 2016/12/15
- Phantom: SAM_Left; Type: QD000P40CD; Serial: S/N:1796
- Measurement SW: DASY52, Version 52.8 (8); SEMCAD X Version 14.6.10 (7373)

Area Scan (101x181x1): Interpolated grid: dx=1.000 mm, dy=1.000 mm

Maximum value of SAR (interpolated) = 0.154 W/kg

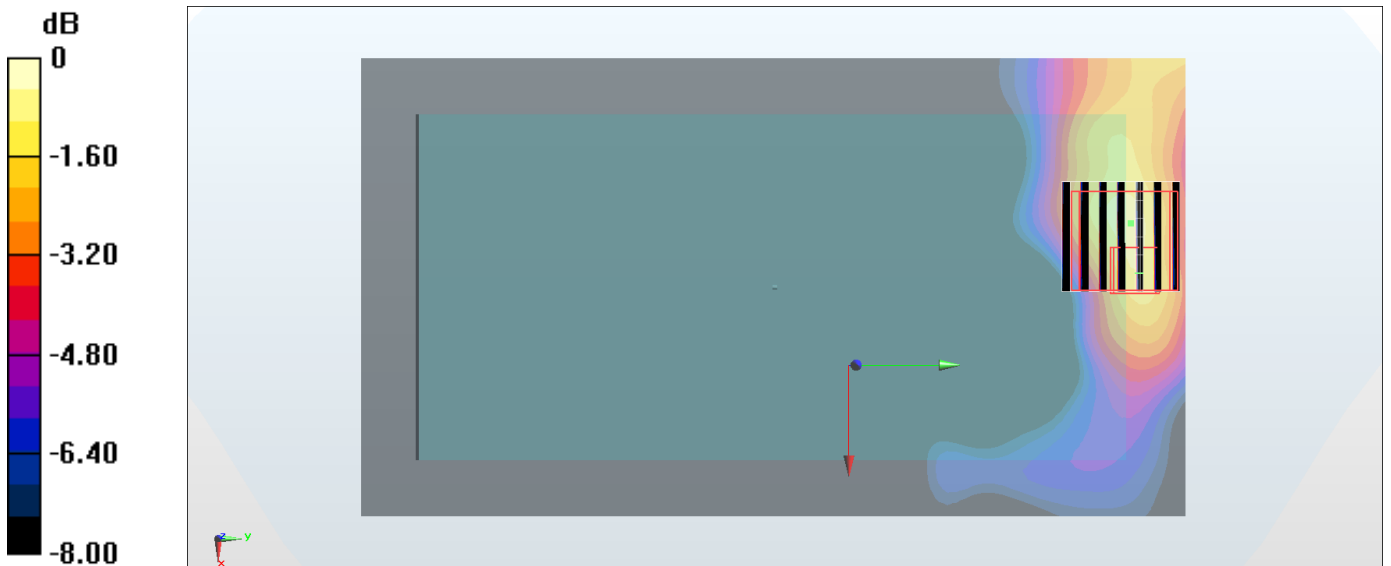
Zoom Scan (7x7x7)/Cube 0: Measurement grid: dx=4mm, dy=4mm, dz=1.4mm

Reference Value = 3.840 V/m; Power Drift = 0.04 dB

Peak SAR (extrapolated) = 0.443 W/kg

SAR(1 g) = 0.087 W/kg; SAR(10 g) = 0.037 W/kg

Maximum value of SAR (measured) = 0.184 W/kg



0 dB = 0.184 W/kg = -7.35 dBW/kg

#33_WLAN5GHz_802.11a_6Mbps_Back_15mm_Ch149

Communication System: 802.11a ; Frequency: 5745 MHz;Duty Cycle: 1:1.029

Medium: MSL_5G_170530 Medium parameters used: $f = 5745 \text{ MHz}$; $\sigma = 6.097 \text{ S/m}$; $\epsilon_r = 46.804$; $\rho = 1000 \text{ kg/m}^3$

Ambient Temperature : 23.2 °C; Liquid Temperature : 22.2 °C

DASY5 Configuration

- Probe: EX3DV4 - SN7375; ConvF(4.08, 4.08, 4.08); Calibrated: 2016/12/8;
- Sensor-Surface: 1.4mm (Mechanical Surface Detection)
- Electronics: DAE4 Sn1305; Calibrated: 2016/12/15
- Phantom: SAM_Left; Type: QD000P40CD; Serial: S/N:1796
- Measurement SW: DASY52, Version 52.8 (8); SEMCAD X Version 14.6.10 (7373)

Area Scan (101x181x1): Interpolated grid: $dx=1.000 \text{ mm}$, $dy=1.000 \text{ mm}$

Maximum value of SAR (interpolated) = 0.318 W/kg

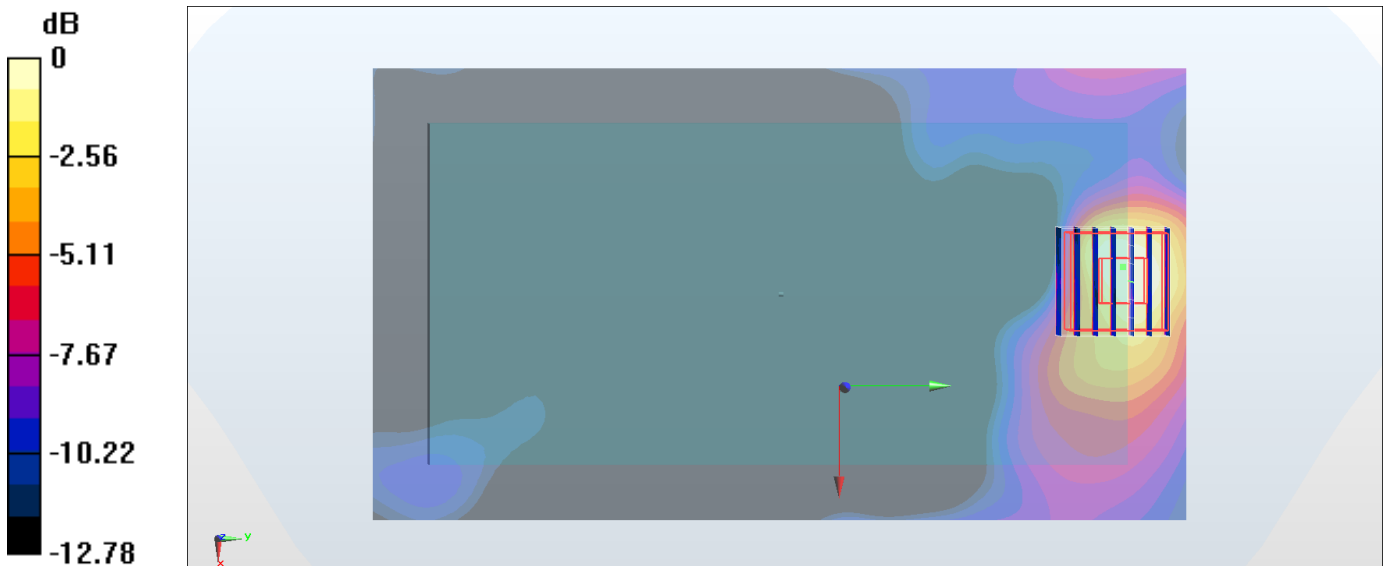
Zoom Scan (7x7x7)/Cube 0: Measurement grid: $dx=4\text{mm}$, $dy=4\text{mm}$, $dz=1.4\text{mm}$

Reference Value = 5.027 V/m; Power Drift = 0.06 dB

Peak SAR (extrapolated) = 0.489 W/kg

SAR(1 g) = 0.134 W/kg; SAR(10 g) = 0.062 W/kg

Maximum value of SAR (measured) = 0.297 W/kg



0 dB = 0.297 W/kg = -5.27 dBW/kg