

2023-06-05 System Performance Check Report D2450V2 - SN963

Summary

Dipole	D2450V2 - SN963		
Frequency [MHz]	2450.0		
Phantom Section TSL	Flat HSL	Dev. Peak [%]	-3.7
Power [dBm]	17.0	Iso. Error [%]	-0.7

Exposure Conditions

Dipole Distance [mm]	10	TSL Permittivity	37.5
Conversion Factor	8.05	TSL Conductivity [S/m]	1.73

Hardware Setup

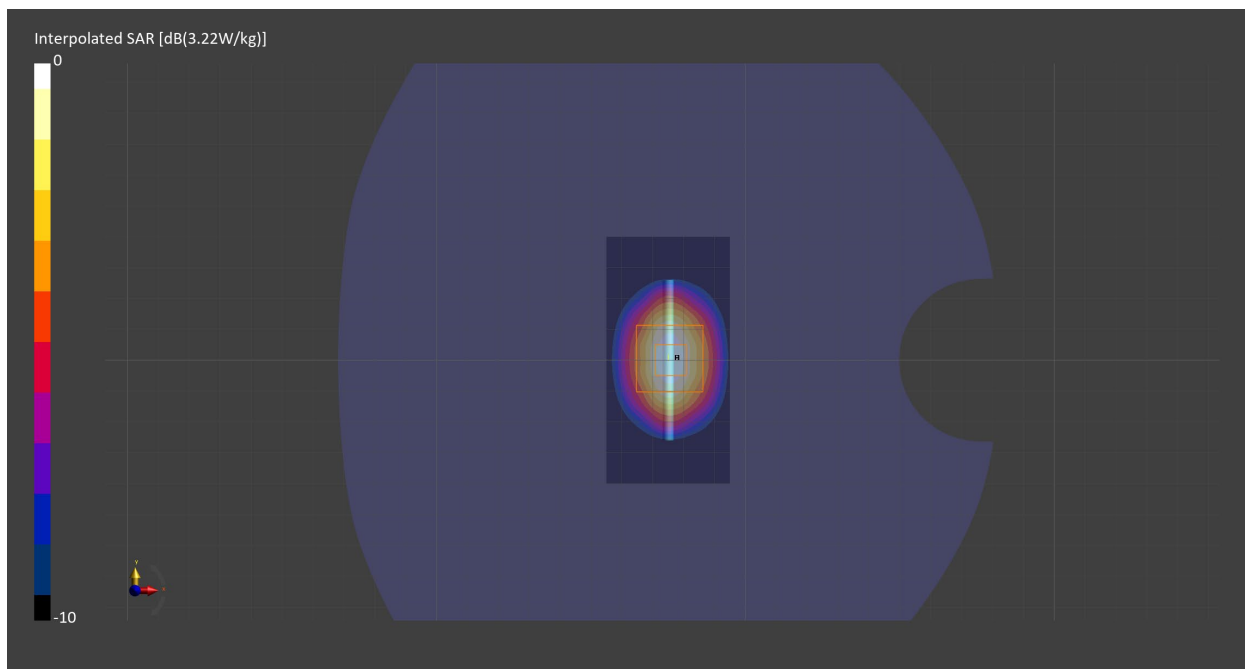
Probe Calibration Date	EX3DV4 - SN7710 2023-02-03	Phantom	Twin-SAM V8.0 (30deg probe tilt) - SN2084
DAE Calibration Date	DAE4 Sn1715 2023-01-23	TSL Meas. Date	HBBL-600-10000 2023-Jun-05

Scans Setup

	Area Scan	Zoom Scan
Grid Extents [mm]	40.0 x 80.0	30.0 x 30.0 x 30.0
Grid Steps [mm]	10.0 x 10.0	5.0 x 5.0 x 1.5
Sensor Surface [mm]	3.0	1.4
Graded Grid	n/a	Yes
M2/M1 [%]		79.8
Dist 3dB Peak [mm]		9.1

Measurement Results

	Area Scan	Zoom Scan
psSAR1g [W/Kg]	2.44	2.44
psSAR10g [W/Kg]	1.13	1.14
Power Drift [dB]	n/a	0.01



2023-06-08 System Performance Check Report D5GHzV2 - SN1213

Summary

Dipole	D5GHzV2 - SN1213		
Frequency [MHz]	5600.0		
Phantom Section TSL	Flat HSL	Dev. Peak [%]	-5.4
Power [dBm]	17.0	Iso. Error [%]	1.0

Exposure Conditions

Dipole Distance [mm]	10	TSL Permittivity	34.9
Conversion Factor	5.27	TSL Conductivity [S/m]	5.00

Hardware Setup

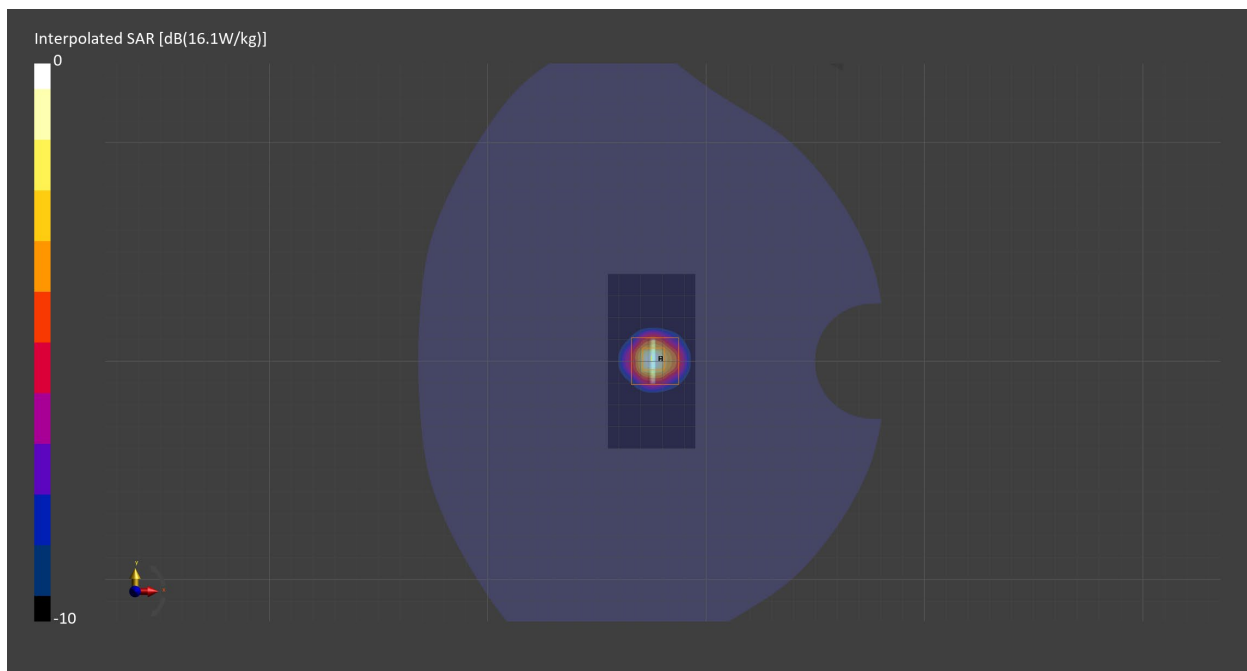
Probe Calibration Date	EX3DV4 - SN7710 2023-02-03	Phantom	Twin-SAM V8.0 (30deg probe tilt) - SN2084
DAE Calibration Date	DAE4 Sn1715 2023-01-23	TSL Meas. Date	HBBL600-10000V6 2023-Jun-08

Scans Setup

	Area Scan	Zoom Scan
Grid Extents [mm]	40.0 x 80.0	22.0 x 22.0 x 22.0
Grid Steps [mm]	10.0 x 10.0	4.0 x 4.0 x 1.4
Sensor Surface [mm]	3.0	1.4
Graded Grid	n/a	Yes
M2/M1 [%]		60.8
Dist 3dB Peak [mm]		7.3

Measurement Results

	Area Scan	Zoom Scan
psSAR1g [W/Kg]	3.61	3.79
psSAR10g [W/Kg]	1.02	1.07
Power Drift [dB]	n/a	0.13



2023-06-13 System Performance Check Report D750V3 - SN1139

Summary

Dipole	D750V3 - SN1139		
Frequency [MHz]	750.0		
Phantom Section TSL	Flat HSL	Dev. Peak [%]	4.6
Power [dBm]	17.0	Iso. Error [%]	1.3

Exposure Conditions

Dipole Distance [mm]	15	TSL Permittivity	42.9
Conversion Factor	10.65	TSL Conductivity [S/m]	0.909

Hardware Setup

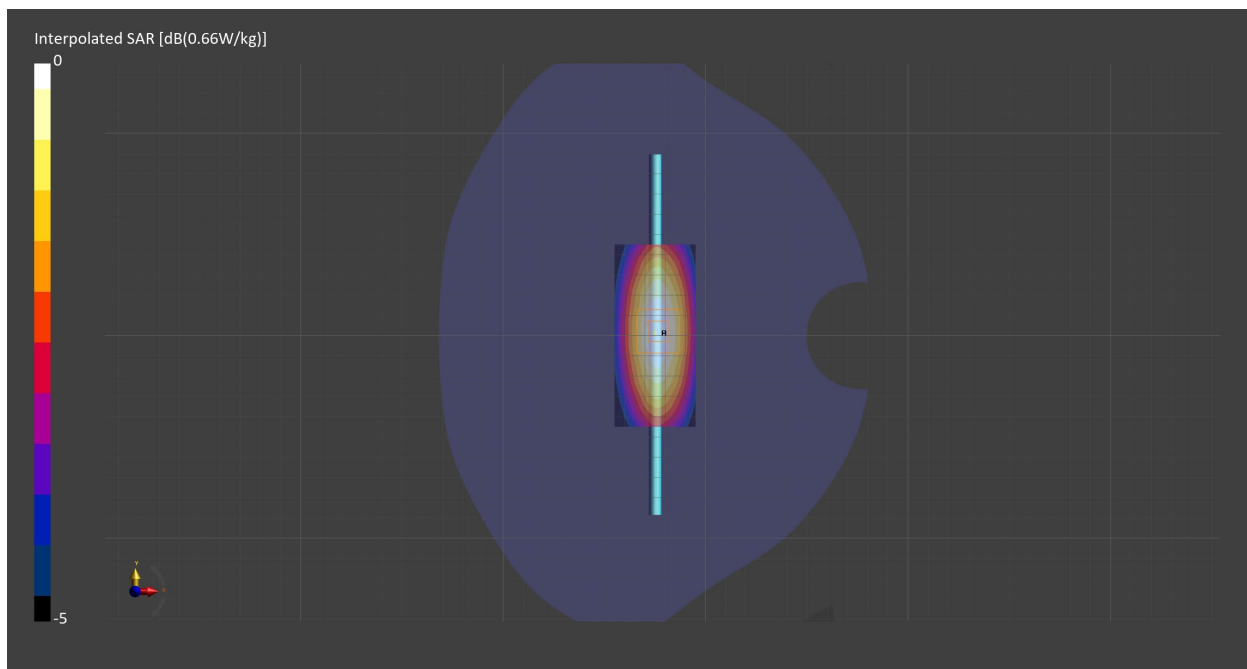
Probe Calibration Date	EX3DV4 - SN7710 2023-02-03	Phantom	Twin-SAM V8.0 (30deg probe tilt) - SN2084
DAE Calibration Date	DAE4 Sn1715 2023-01-23	TSL Meas. Date	HBBL600-10000V6 2023-Jun-13

Scans Setup

	Area Scan	Zoom Scan
Grid Extents [mm]	40.0 x 90.0	30.0 x 30.0 x 30.0
Grid Steps [mm]	10.0 x 15.0	6.0 x 6.0 x 1.5
Sensor Surface [mm]	3.0	1.4
Graded Grid	n/a	Yes
M2/M1 [%]		85.8
Dist 3dB Peak [mm]		23.9

Measurement Results

	Area Scan	Zoom Scan
psSAR1g [W/Kg]	0.417	0.419
psSAR10g [W/Kg]	0.278	0.275
Power Drift [dB]	n/a	0.01



2023-06-21 System Performance Check Report D2600V2 - SN1104

Summary

Dipole	D2600V2 - SN1104		
Frequency [MHz]	2600.0		
Phantom Section TSL	Flat HSL	Dev. Peak [%]	-0.5
Power [dBm]	17.0	Iso. Error [%]	1.5

Exposure Conditions

Dipole Distance [mm]	10	TSL Permittivity	38.1
Conversion Factor	7.97	TSL Conductivity [S/m]	1.97

Hardware Setup

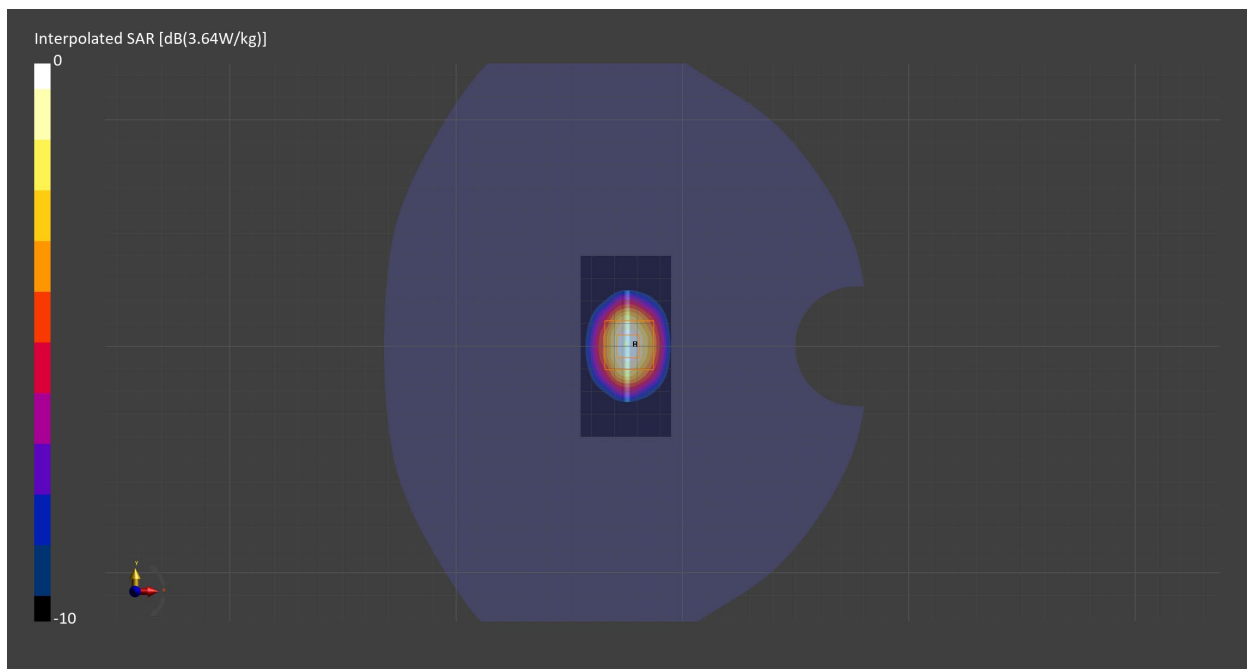
Probe Calibration Date	EX3DV4 - SN7710 2023-02-03	Phantom	Twin-SAM V8.0 (30deg probe tilt) - SN2084
DAE Calibration Date	DAE4 Sn1715 2023-01-23	TSL Meas. Date	HBBL600-10000V6 2023-Jun-21

Scans Setup

	Area Scan	Zoom Scan
Grid Extents [mm]	40.0 x 80.0	30.0 x 30.0 x 30.0
Grid Steps [mm]	10.0 x 10.0	5.0 x 5.0 x 1.5
Sensor Surface [mm]	3.0	1.4
Graded Grid	n/a	Yes
M2/M1 [%]		78.7
Dist 3dB Peak [mm]		9.1

Measurement Results

	Area Scan	Zoom Scan
psSAR1g [W/Kg]	2.72	2.73
psSAR10g [W/Kg]	1.22	1.23
Power Drift [dB]	n/a	-0.00



2023-06-12 System Performance Check Report D1750V2 - SN1136

Summary

Dipole	D1750V2 - SN1136		
Frequency [MHz]	1750.0		
Phantom Section TSL	Flat HSL	Dev. Peak [%]	-0.7
Power [dBm]	17.0	Iso. Error [%]	-0.9

Exposure Conditions

Dipole Distance [mm]	10	TSL Permittivity	40.0
Conversion Factor	8.64	TSL Conductivity [S/m]	1.34

Hardware Setup

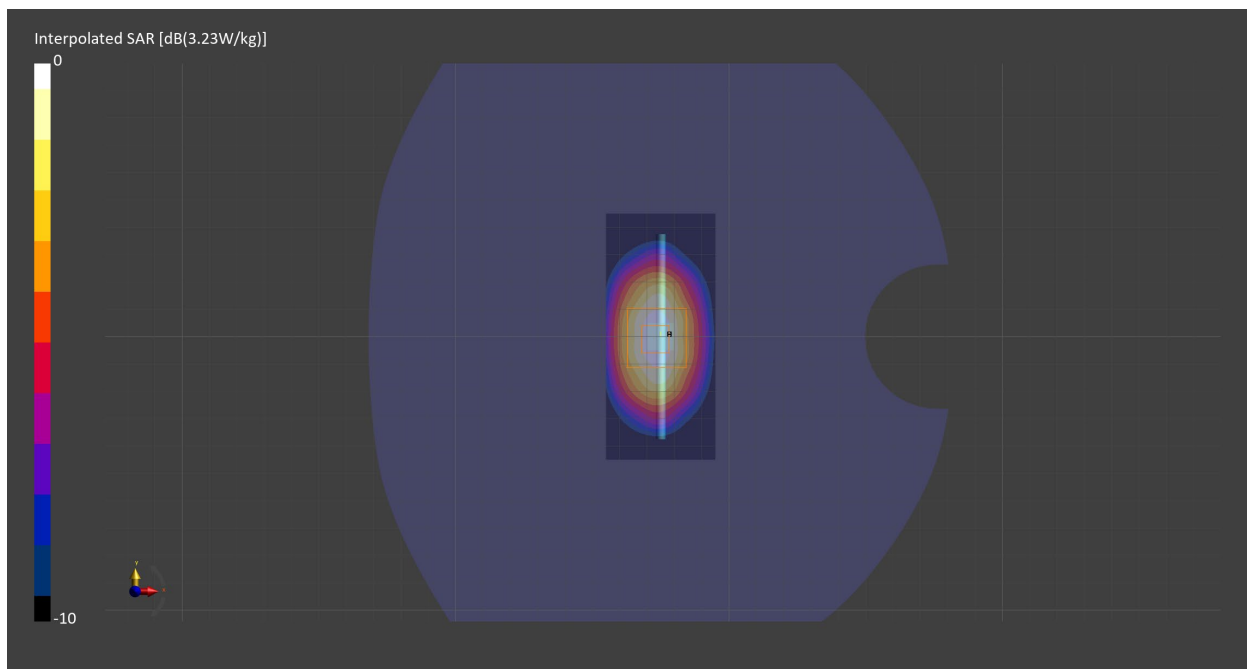
Probe Calibration Date	EX3DV4 - SN7711 2023-03-29	Phantom	Twin-SAM V8.0 (30deg probe tilt) - SN2082
DAE Calibration Date	DAE4 Sn1716 2023-03-16	TSL Meas. Date	HBBL-600-10000 2023-Jun-12

Scans Setup

	Area Scan	Zoom Scan
Grid Extents [mm]	40.0 x 90.0	30.0 x 30.0 x 30.0
Grid Steps [mm]	10.0 x 15.0	6.0 x 6.0 x 1.5
Sensor Surface [mm]	3.0	1.4
Graded Grid	n/a	Yes
M2/M1 [%]		82.3
Dist 3dB Peak [mm]		10.8

Measurement Results

	Area Scan	Zoom Scan
psSAR1g [W/Kg]	1.75	1.75
psSAR10g [W/Kg]	0.941	0.938
Power Drift [dB]	n/a	-0.00



2023-06-14 System Performance Check Report D2600V2 - SN1104

Summary

Dipole	D2600V2 - SN1104		
Frequency [MHz]	2600.0		
Phantom Section TSL	Flat HSL	Dev. Peak [%]	2.4
Power [dBm]	17.0	Iso. Error [%]	-1.1

Exposure Conditions

Dipole Distance [mm]	10	TSL Permittivity	40.5
Conversion Factor	7.67	TSL Conductivity [S/m]	1.97

Hardware Setup

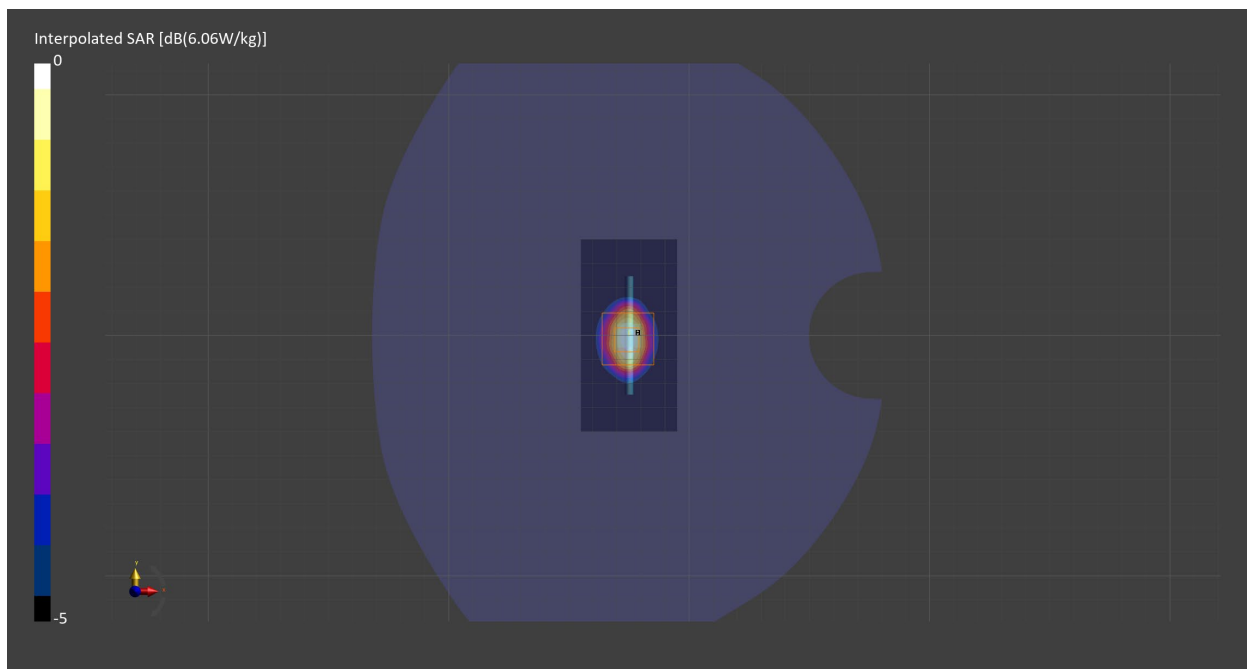
Probe Calibration Date	EX3DV4 - SN7711 2023-03-29	Phantom	Twin-SAM V8.0 (30deg probe tilt) - SN2082
DAE Calibration Date	DAE4 Sn1716 2023-03-16	TSL Meas. Date	HBBL-600-10000 2023-Jun-14

Scans Setup

	Area Scan	Zoom Scan
Grid Extents [mm]	40.0 x 80.0	30.0 x 30.0 x 30.0
Grid Steps [mm]	10.0 x 10.0	5.0 x 5.0 x 1.5
Sensor Surface [mm]	3.0	1.4
Graded Grid	n/a	Yes
M2/M1 [%]		79.3
Dist 3dB Peak [mm]		9.1

Measurement Results

	Area Scan	Zoom Scan
psSAR1g [W/Kg]	2.84	2.86
psSAR10g [W/Kg]	1.28	1.30
Power Drift [dB]	n/a	0.02



2023-06-19 System Performance Check Report D1900V2 - SN5d202

Summary

Dipole	D1900V2 - SN5d202		
Frequency [MHz]	1900.0		
Phantom Section TSL	Flat HSL	Dev. Peak [%]	7.1
Power [dBm]	17.0	Iso. Error [%]	0.9

Exposure Conditions

Dipole Distance [mm]	10	TSL Permittivity	38.1
Conversion Factor	8.18	TSL Conductivity [S/m]	1.42

Hardware Setup

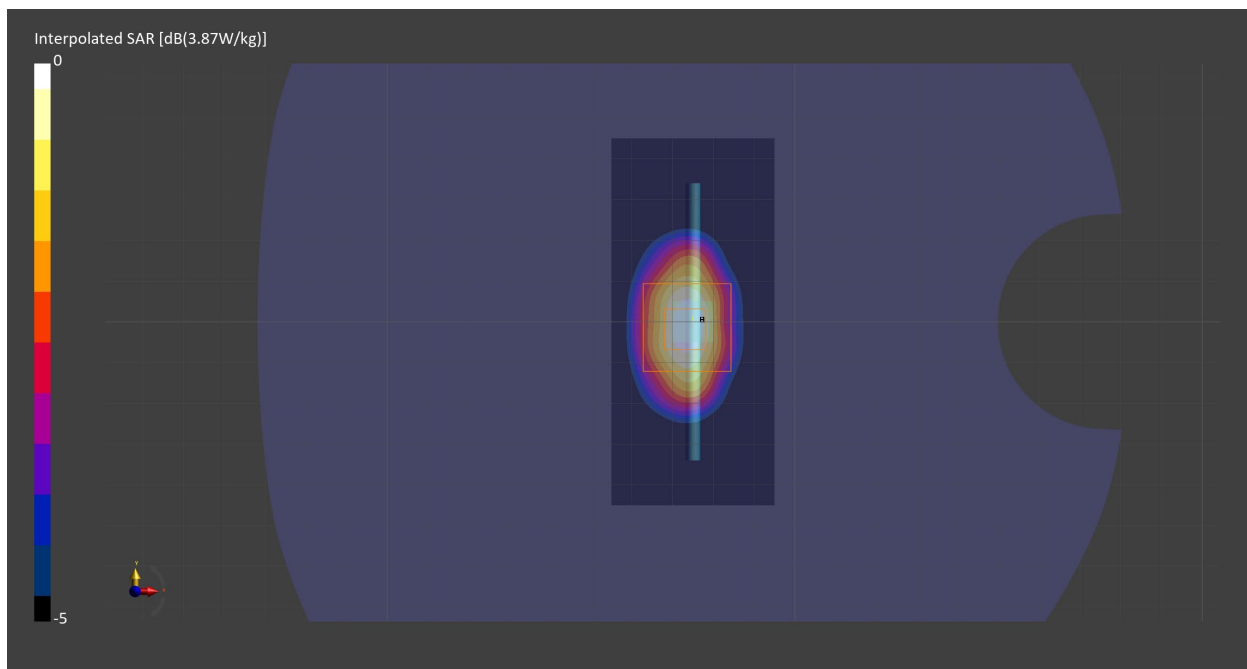
Probe Calibration Date	EX3DV4 - SN7711 2023-03-29	Phantom	Twin-SAM V8.0 (30deg probe tilt) - SN2082
DAE Calibration Date	DAE4 Sn1716 2023-03-16	TSL Meas. Date	HBBL-600-10000 2023-Jun-19

Scans Setup

	Area Scan	Zoom Scan
Grid Extents [mm]	40.0 x 90.0	30.0 x 30.0 x 30.0
Grid Steps [mm]	10.0 x 15.0	6.0 x 6.0 x 1.5
Sensor Surface [mm]	3.0	1.4
Graded Grid	n/a	Yes
M2/M1 [%]		81.8
Dist 3dB Peak [mm]		10.8

Measurement Results

	Area Scan	Zoom Scan
psSAR1g [W/Kg]	2.05	2.06
psSAR10g [W/Kg]	1.08	1.07
Power Drift [dB]	n/a	0.01



2023-06-22 System Performance Check Report D750V3 - SN1139

Summary

Dipole	D750V3 - SN1139		
Frequency [MHz]	750.0		
Phantom Section TSL	Flat HSL	Dev. Peak [%]	-1.2
Power [dBm]	17.0	Iso. Error [%]	0.6

Exposure Conditions

Dipole Distance [mm]	15	TSL Permittivity	40.7
Conversion Factor	10.14	TSL Conductivity [S/m]	0.875

Hardware Setup

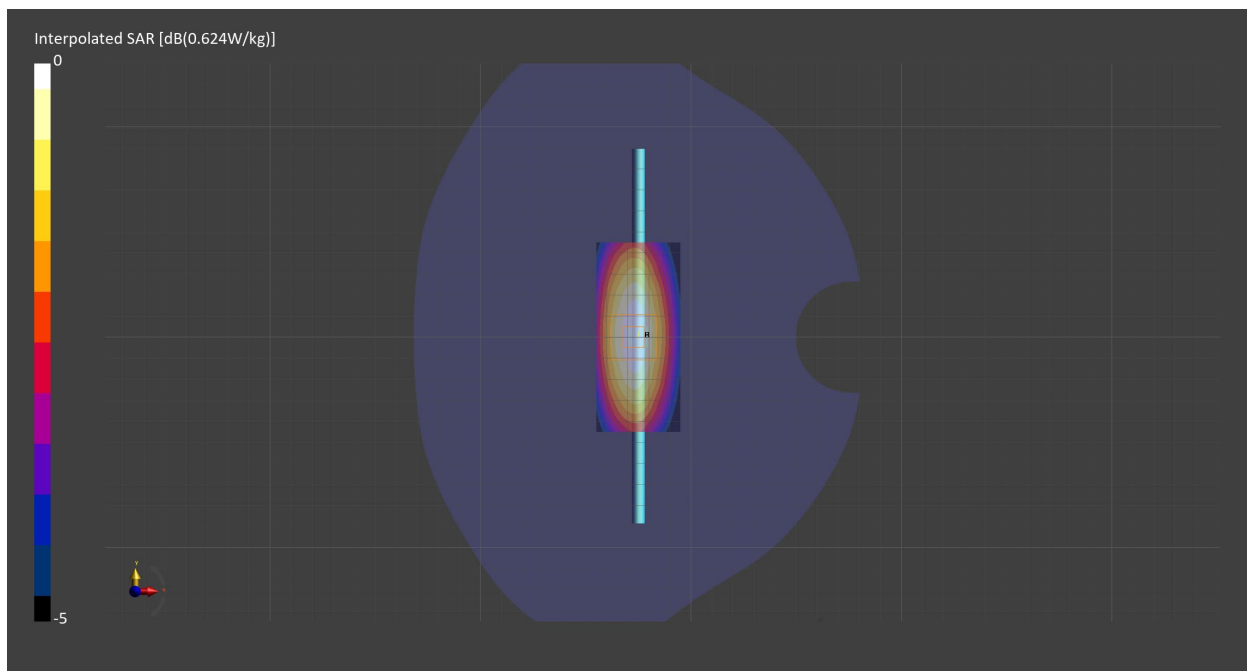
Probe Calibration Date	EX3DV4 - SN7711 2023-03-29	Phantom	Twin-SAM V8.0 (30deg probe tilt) - SN2082
DAE Calibration Date	DAE4 Sn1716 2023-03-16	TSL Meas. Date	HBBL-600-10000 2023-Jun-22

Scans Setup

	Area Scan	Zoom Scan
Grid Extents [mm]	40.0 x 90.0	30.0 x 30.0 x 30.0
Grid Steps [mm]	10.0 x 15.0	6.0 x 6.0 x 1.5
Sensor Surface [mm]	3.0	1.4
Graded Grid	n/a	Yes
M2/M1 [%]		87.9
Dist 3dB Peak [mm]		22.1

Measurement Results

	Area Scan	Zoom Scan
psSAR1g [W/Kg]	0.416	0.414
psSAR10g [W/Kg]	0.278	0.274
Power Drift [dB]	n/a	0.00



2023-06-29 System Performance Check Report D5GHzV2 - SN1213

Summary

Dipole	D5GHzV2 - SN1213		
Frequency [MHz]	5750.0		
Phantom Section TSL	Flat HSL	Dev. Peak [%]	-6.3
Power [dBm]	17.0	Iso. Error [%]	-1.3

Exposure Conditions

Dipole Distance [mm]	10	TSL Permittivity	35.1
Conversion Factor	5.28	TSL Conductivity [S/m]	5.29

Hardware Setup

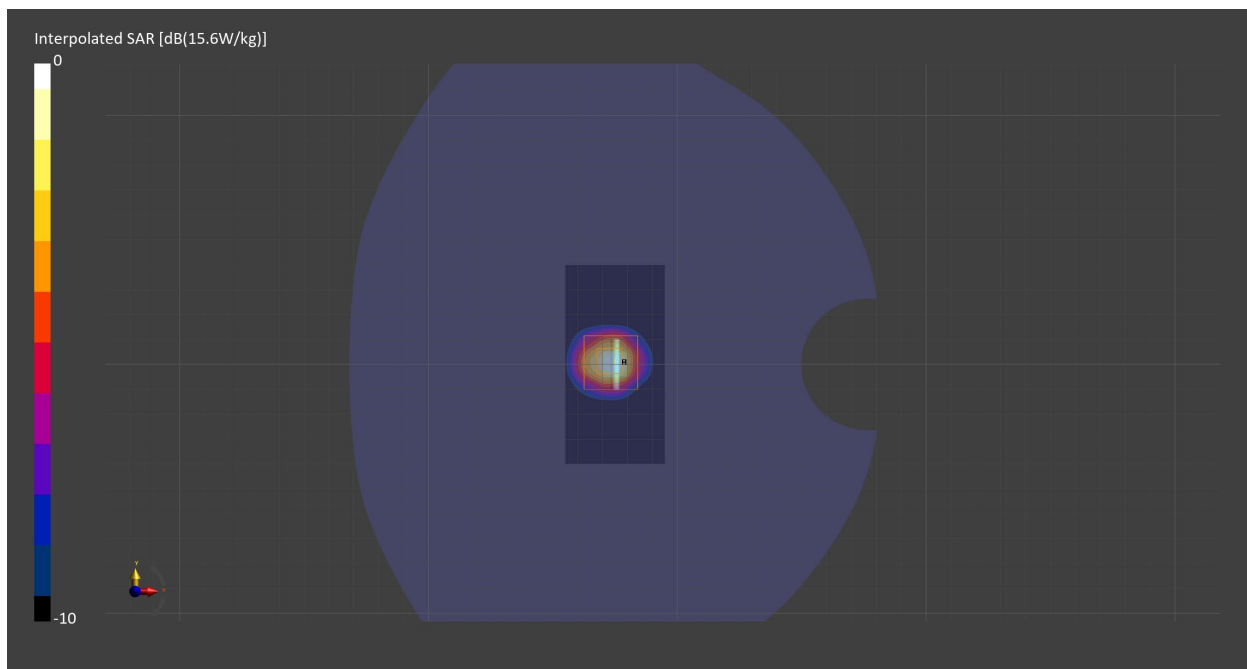
Probe Calibration Date	EX3DV4 - SN7711 2023-03-29	Phantom	Twin-SAM V8.0 (30deg probe tilt) - SN2082
DAE Calibration Date	DAE4 Sn1716 2023-03-16	TSL Meas. Date	HBBL-600-10000 2023-Jun-28

Scans Setup

	Area Scan	Zoom Scan
Grid Extents [mm]	40.0 x 80.0	22.0 x 22.0 x 22.0
Grid Steps [mm]	10.0 x 10.0	4.0 x 4.0 x 1.4
Sensor Surface [mm]	3.0	1.4
Graded Grid	n/a	Yes
M2/M1 [%]		60.7
Dist 3dB Peak [mm]		7.4

Measurement Results

	Area Scan	Zoom Scan
psSAR1g [W/Kg]	3.33	3.66
psSAR10g [W/Kg]	0.984	1.05
Power Drift [dB]	n/a	-0.04



2023-06-07 System Performance Check Report D1900V2 - SN5d202

Summary

Dipole	D1900V2 - SN5d202		
Frequency [MHz]	1900.0		
Phantom Section TSL	Flat HSL	Dev. Peak [%]	6.1
Power [dBm]	17.0	Iso. Error [%]	2.4

Exposure Conditions

Dipole Distance [mm]	10	TSL Permittivity	39.9
Conversion Factor	8.74	TSL Conductivity [S/m]	1.45

Hardware Setup

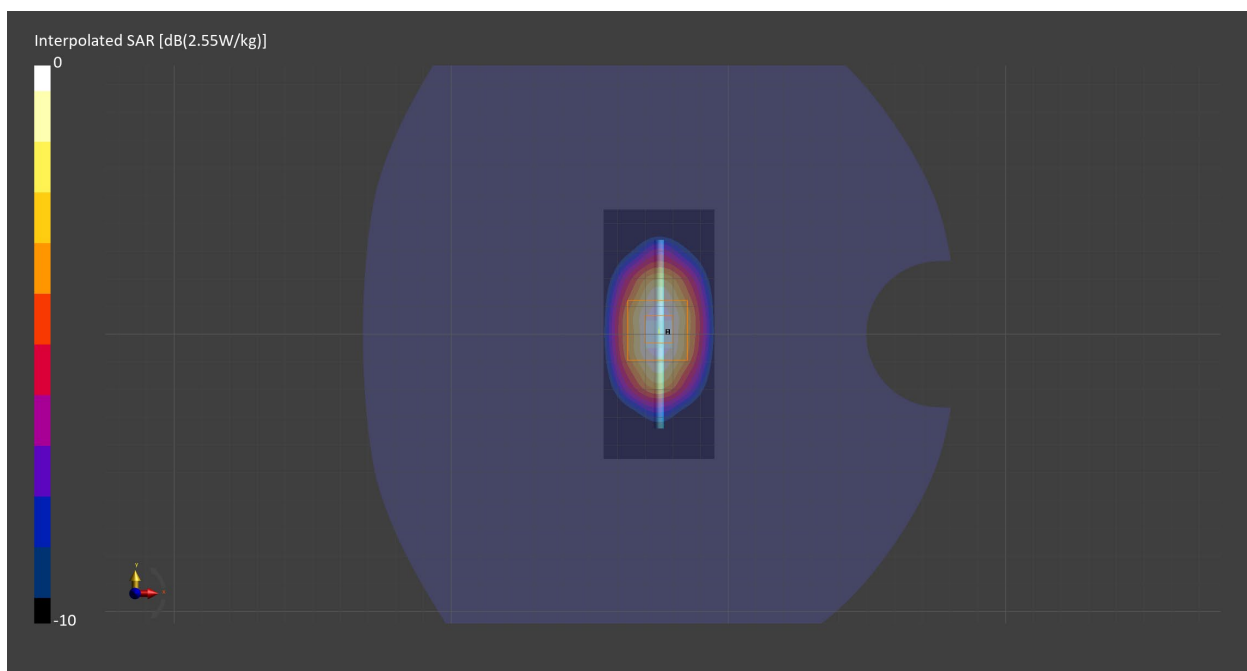
Probe Calibration Date	EX3DV4 - SN7709 2022-12-12	Phantom	Twin-SAM V8.0 (30deg probe tilt) - SN1742
DAE Calibration Date	DAE4 Sn1714 2022-11-23	TSL Meas. Date	HBBL-600-10000 2023-Jun-07

Scans Setup

	Area Scan	Zoom Scan
Grid Extents [mm]	40.0 x 90.0	30.0 x 30.0 x 30.0
Grid Steps [mm]	10.0 x 15.0	6.0 x 6.0 x 1.5
Sensor Surface [mm]	3.0	1.4
Graded Grid	n/a	Yes
M2/M1 [%]		81.7
Dist 3dB Peak [mm]		9.7

Measurement Results

	Area Scan	Zoom Scan
psSAR1g [W/Kg]	2.02	1.99
psSAR10g [W/Kg]	1.04	1.02
Power Drift [dB]	n/a	0.01



2023-06-28 System Performance Check Report D5GHzV2 - SN1213

Summary

Dipole	D5GHzV2 - SN1213		
Frequency [MHz]	5750.0		
Phantom Section TSL	Flat HSL	Dev. Peak [%]	-6.2
Power [dBm]	17.0	Iso. Error [%]	2.9

Exposure Conditions

Dipole Distance [mm]	10	TSL Permittivity	34.9
Conversion Factor	5.4	TSL Conductivity [S/m]	5.17

Hardware Setup

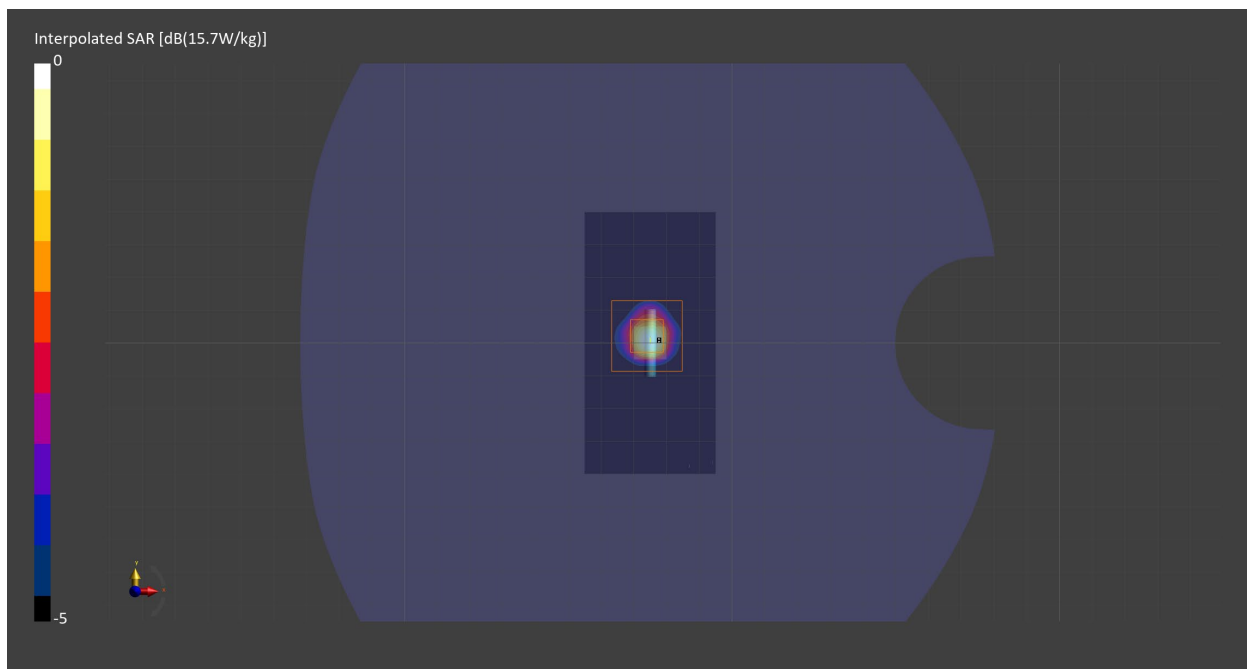
Probe Calibration Date	EX3DV4 - SN7709 2022-12-12	Phantom	Twin-SAM V8.0 (30deg probe tilt) - SN1742
DAE Calibration Date	DAE4 Sn1714 2022-11-23	TSL Meas. Date	HBBL-600-10000 2023-Jun-27

Scans Setup

	Area Scan	Zoom Scan
Grid Extents [mm]	40.0 x 80.0	22.0 x 22.0 x 22.0
Grid Steps [mm]	10.0 x 10.0	4.0 x 4.0 x 1.4
Sensor Surface [mm]	3.0	1.4
Graded Grid	n/a	Yes
M2/M1 [%]		61.6
Dist 3dB Peak [mm]		7.2

Measurement Results

	Area Scan	Zoom Scan
psSAR1g [W/Kg]	3.53	3.70
psSAR10g [W/Kg]	0.999	1.05
Power Drift [dB]	n/a	-0.05



2023-07-12 System Performance Check Report D5GHzV2 - SN1213

Summary

Dipole	D5GHzV2 - SN1213		
Frequency [MHz]	5250.0		
Phantom Section TSL	Flat HSL	Dev. Peak [%]	-9.3
Power [dBm]	17.0	Iso. Error [%]	-2.3

Exposure Conditions

Dipole Distance [mm]	10	TSL Permittivity	34.5
Conversion Factor	5.9	TSL Conductivity [S/m]	4.59

Hardware Setup

Probe Calibration Date	EX3DV4 - SN7709 2022-12-12	Phantom	Twin-SAM V8.0 (30deg probe tilt) - SN1742
DAE Calibration Date	DAE4 Sn1714 2022-11-23	TSL Meas. Date	HBBL3500-5800V5 2023-Jul-12

Scans Setup

	Area Scan	Zoom Scan
Grid Extents [mm]	40.0 x 80.0	22.0 x 22.0 x 22.0
Grid Steps [mm]	10.0 x 10.0	4.0 x 4.0 x 1.4
Sensor Surface [mm]	3.0	1.4
Graded Grid	n/a	Yes
M2/M1 [%]		66.4
Dist 3dB Peak [mm]		7.2

Measurement Results

	Area Scan	Zoom Scan
psSAR1g [W/Kg]	3.49	3.74
psSAR10g [W/Kg]	1.00	1.06
Power Drift [dB]	n/a	-0.01

