

# Measurement Report for GSM 850, CHEEK, Normal, CELL Main1

## Exposure Conditions

Band	GSM 850	TSL Permittivity	40.3
Frequency [MHz]   Channel Number	836.6   190	TSL Conductivity [S/m]	0.921
Group   UID	GSM   10028-DAC	Phantom Section   TSL	RightHead   HSL
Conversion Factor	9.5	Test Distance [mm]	0.00
Communication Configuration	GPRS-FDD (TDMA, GMSK, TN 0-1-2-3)		

## Hardware Setup

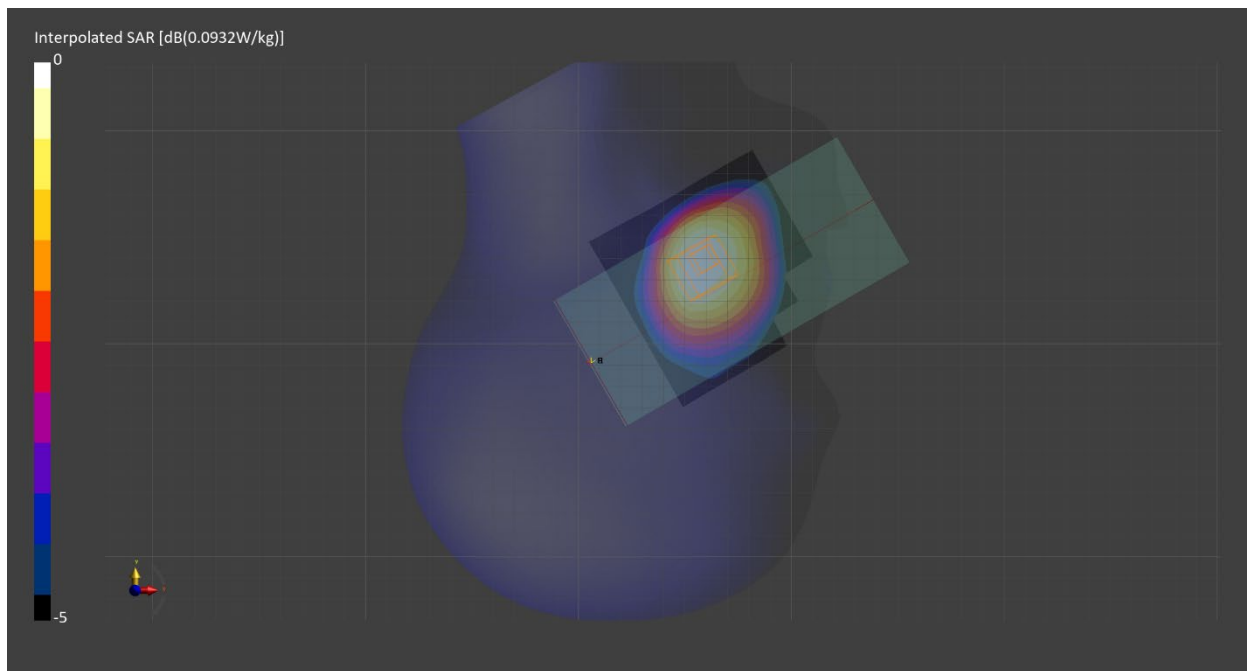
Probe   Calibration Date	EX3DV4 - SN7711   2023-03-29	Phantom	Twin-SAM V8.0 (30deg probe tilt) - SN2082
DAE   Calibration Date	DAE4 Sn1716   2023-03-16	TSL   Meas. Date	HBBL-600-10000   2023-Jul-11

## Scans Setup

	Area Scan	Zoom Scan
Grid Extents [mm]	90.0 x 90.0	30.0 x 30.0 x 30.0
Grid Steps [mm]	15.0 x 15.0	6.0 x 6.0 x 1.5
Sensor Surface [mm]	3.0	1.4
Graded Grid	n/a	Yes
M2/M1 [%]		95.4
Dist 3dB Peak [mm]		22.8

## Measurement Results

	Area Scan	Zoom Scan
psSAR1g [W/Kg]	0.081	<b>0.085</b>
psSAR10g [W/Kg]	0.056	<b>0.066</b>
Power Drift [dB]	n/a	-0.04



# Measurement Report for GSM 850, BACK, Normal, CELL Main1

## Exposure Conditions

Band	GSM 850	TSL Permittivity	40.3
Frequency [MHz]   Channel Number	836.6   190	TSL Conductivity [S/m]	0.921
Group   UID	GSM   10028-DAC	Phantom Section   TSL	Flat   HSL
Conversion Factor	9.5	Test Distance [mm]	10.00
Communication Configuration	GPRS-FDD (TDMA, GMSK, TN 0-1-2-3)		

## Hardware Setup

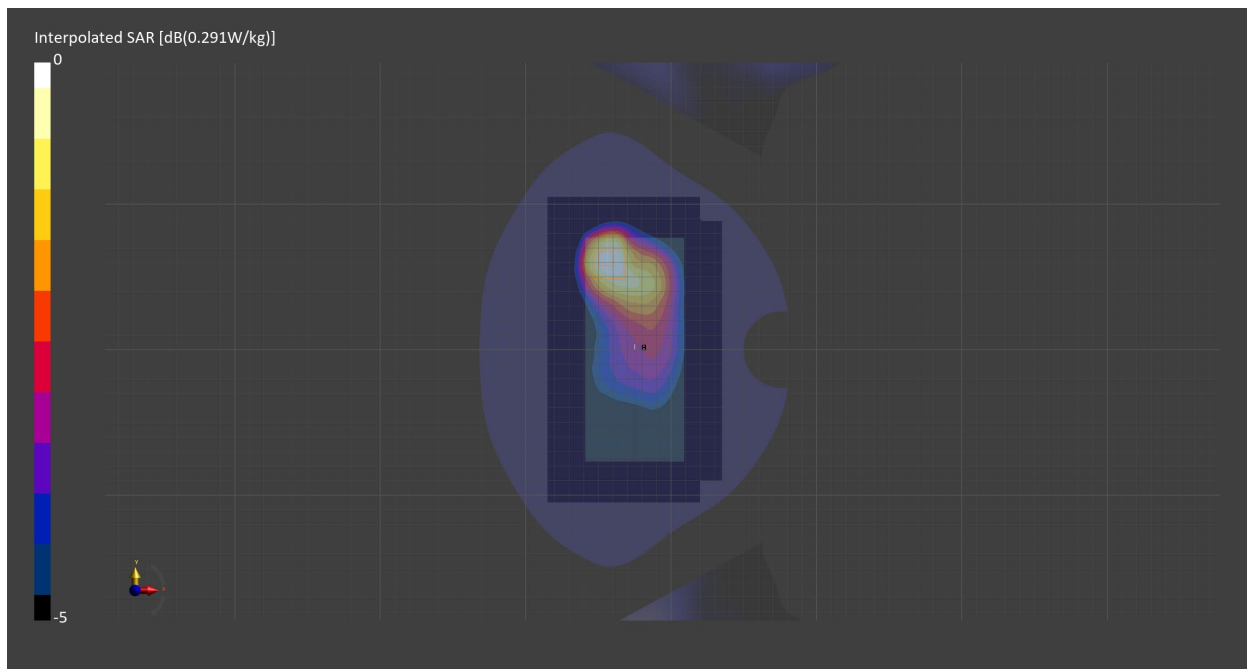
Probe   Calibration Date	EX3DV4 - SN7711   2023-03-29	Phantom	Twin-SAM V8.0 (30deg probe tilt) - SN2082
DAE   Calibration Date	DAE4 Sn1716   2023-03-16	TSL   Meas. Date	HBBL-600-10000   2023-Jul-11

## Scans Setup

	Area Scan	Zoom Scan
Grid Extents [mm]	120.0 x 210.0	30.0 x 30.0 x 30.0
Grid Steps [mm]	15.0 x 15.0	6.0 x 6.0 x 1.5
Sensor Surface [mm]	3.0	1.4
Graded Grid	n/a	Yes
M2/M1 [%]		84.3
Dist 3dB Peak [mm]		16.1

## Measurement Results

	Area Scan	Zoom Scan
psSAR1g [W/Kg]	0.177	<b>0.175</b>
psSAR10g [W/Kg]	0.119	<b>0.108</b>
Power Drift [dB]	n/a	-0.04



# Measurement Report for GSM 850, BACK, Normal, CELL Main1

## Exposure Conditions

Band	GSM 850	TSL Permittivity	40.3
Frequency [MHz]   Channel Number	836.6   190	TSL Conductivity [S/m]	0.921
Group   UID	GSM   10024-DAC	Phantom Section   TSL	Flat   HSL
Conversion Factor	9.5	Test Distance [mm]	10.00
Communication Configuration	GPRS-FDD (TDMA, GMSK, TN 0-1)		

## Hardware Setup

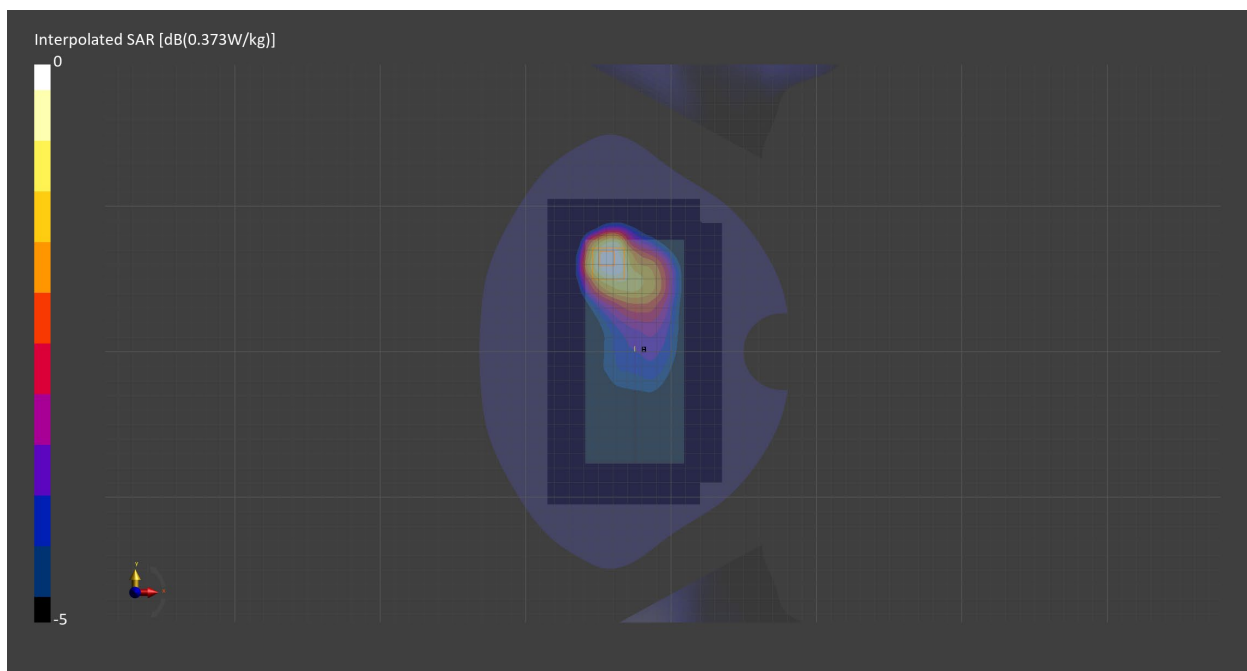
Probe   Calibration Date	EX3DV4 - SN7711   2023-03-29	Phantom	Twin-SAM V8.0 (30deg probe tilt) - SN2082
DAE   Calibration Date	DAE4 Sn1716   2023-03-16	TSL   Meas. Date	HBBL-600-10000   2023-Jul-11

## Scans Setup

	Area Scan	Zoom Scan
Grid Extents [mm]	120.0 x 210.0	30.0 x 30.0 x 30.0
Grid Steps [mm]	15.0 x 15.0	6.0 x 6.0 x 1.5
Sensor Surface [mm]	3.0	1.4
Graded Grid	n/a	Yes
M2/M1 [%]		84.2
Dist 3dB Peak [mm]		15.6

## Measurement Results

	Area Scan	Zoom Scan
psSAR1g [W/Kg]	0.221	<b>0.221</b>
psSAR10g [W/Kg]	0.147	<b>0.135</b>
Power Drift [dB]	n/a	-0.01



# Measurement Report for PCS 1900, CHEEK, Normal, CELL Main2

## Exposure Conditions

Band	PCS 1900	TSL Permittivity	38.3
Frequency [MHz]   Channel Number	1909.8   810	TSL Conductivity [S/m]	1.43
Group   UID	GSM   10028-DAC	Phantom Section   TSL	RightHead   HSL
Conversion Factor	8.18	Test Distance [mm]	0.00
Communication Configuration	GPRS-FDD (TDMA, GMSK, TN 0-1-2-3)		

## Hardware Setup

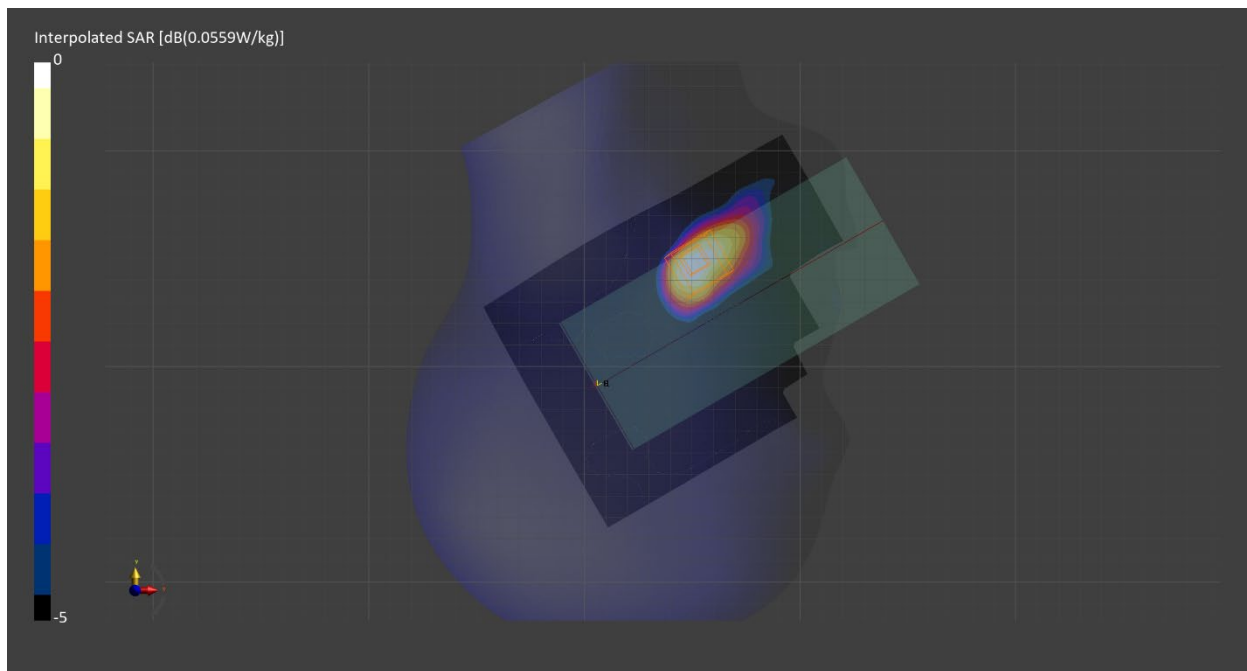
Probe   Calibration Date	EX3DV4 - SN7711   2023-03-29	Phantom	Twin-SAM V8.0 (30deg probe tilt) - SN2082
DAE   Calibration Date	DAE4 Sn1716   2023-03-16	TSL   Meas. Date	HBBL-600-10000   2023-Jul-11

## Scans Setup

	Area Scan	Zoom Scan
Grid Extents [mm]	120.0 x 210.0	30.0 x 30.0 x 30.0
Grid Steps [mm]	15.0 x 15.0	6.0 x 6.0 x 1.5
Sensor Surface [mm]	3.0	1.4
Graded Grid	n/a	Yes
M2/M1 [%]		91.0
Dist 3dB Peak [mm]		11.1

## Measurement Results

	Area Scan	Zoom Scan
psSAR1g [W/Kg]	0.046	<b>0.035</b>
psSAR10g [W/Kg]	0.020	<b>0.021</b>
Power Drift [dB]	n/a	-0.00



# Measurement Report for PCS 1900, BACK, Normal, CELL Main2

## Exposure Conditions

Band	PCS 1900	TSL Permittivity	38.3
Frequency [MHz]   Channel Number	1909.8   810	TSL Conductivity [S/m]	1.43
Group   UID	GSM   10028-DAC	Phantom Section   TSL	Flat   HSL
Conversion Factor	8.18	Test Distance [mm]	10.00
Communication Configuration	GPRS-FDD (TDMA, GMSK, TN 0-1-2-3)		

## Hardware Setup

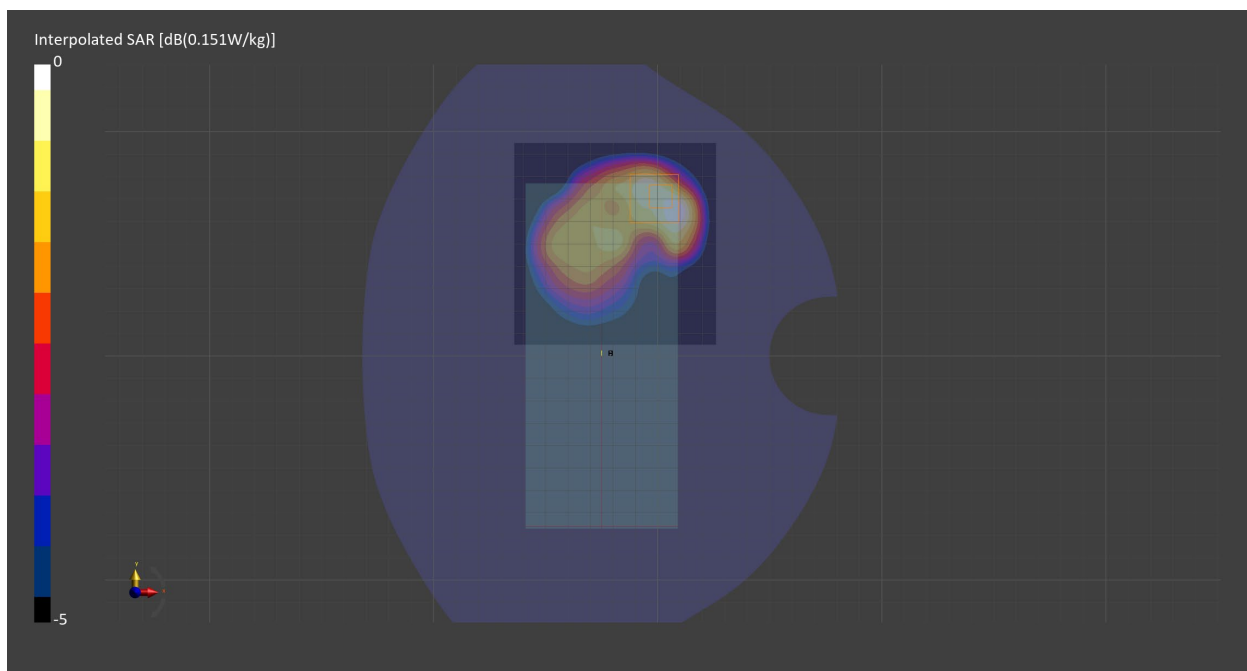
Probe   Calibration Date	EX3DV4 - SN7711   2023-03-29	Phantom	Twin-SAM V8.0 (30deg probe tilt) - SN2082
DAE   Calibration Date	DAE4 Sn1716   2023-03-16	TSL   Meas. Date	HBBL-600-10000   2023-Jul-11

## Scans Setup

	Area Scan	Zoom Scan
Grid Extents [mm]	90.0 x 90.0	30.0 x 30.0 x 30.0
Grid Steps [mm]	15.0 x 15.0	6.0 x 6.0 x 1.5
Sensor Surface [mm]	3.0	1.4
Graded Grid	n/a	Yes
M2/M1 [%]		80.7
Dist 3dB Peak [mm]		11.9

## Measurement Results

	Area Scan	Zoom Scan
psSAR1g [W/Kg]	0.123	<b>0.129</b>
psSAR10g [W/Kg]	0.071	<b>0.073</b>
Power Drift [dB]	n/a	-0.02



# Measurement Report for PCS 1900, EDGE BOTTOM, Normal, CELL Main2

## Exposure Conditions

Band	PCS 1900	TSL Permittivity	38.3
Frequency [MHz]   Channel Number	1909.8   810	TSL Conductivity [S/m]	1.43
Group   UID	GSM   10028-DAC	Phantom Section   TSL	Flat   HSL
Conversion Factor	8.18	Test Distance [mm]	10.00
Communication Configuration	GPRS-FDD (TDMA, GMSK, TN 0-1-2-3)		

## Hardware Setup

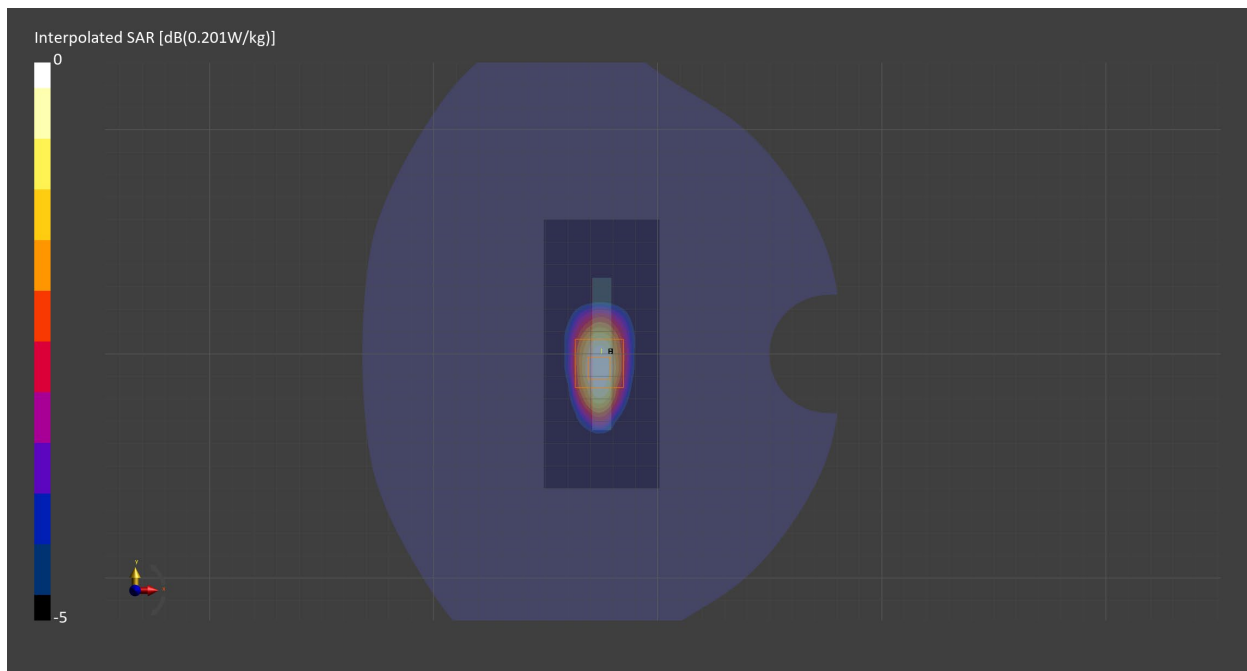
Probe   Calibration Date	EX3DV4 - SN7711   2023-03-29	Phantom	Twin-SAM V8.0 (30deg probe tilt) - SN2082
DAE   Calibration Date	DAE4 Sn1716   2023-03-16	TSL   Meas. Date	HBBL-600-10000   2023-Jul-11

## Scans Setup

	Area Scan	Zoom Scan
Grid Extents [mm]	51.6 x 120.0	30.0 x 30.0 x 30.0
Grid Steps [mm]	8.6 x 15.0	6.0 x 6.0 x 1.5
Sensor Surface [mm]	3.0	1.4
Graded Grid	n/a	Yes
M2/M1 [%]		83.4
Dist 3dB Peak [mm]		12.0

## Measurement Results

	Area Scan	Zoom Scan
psSAR1g [W/Kg]	0.162	<b>0.163</b>
psSAR10g [W/Kg]	0.089	<b>0.091</b>
Power Drift [dB]	n/a	-0.07



# Measurement Report for PCS 1900, EDGE BOTTOM, Normal, CELL Main2

## Exposure Conditions

Band	PCS 1900	TSL Permittivity	38.3
Frequency [MHz]   Channel Number	1909.8   810	TSL Conductivity [S/m]	1.43
Group   UID	GSM   10024-DAC	Phantom Section   TSL	Flat   HSL
Conversion Factor	8.18	Test Distance [mm]	10.00
Communication Configuration	GPRS-FDD (TDMA, GMSK, TN 0-1)		

## Hardware Setup

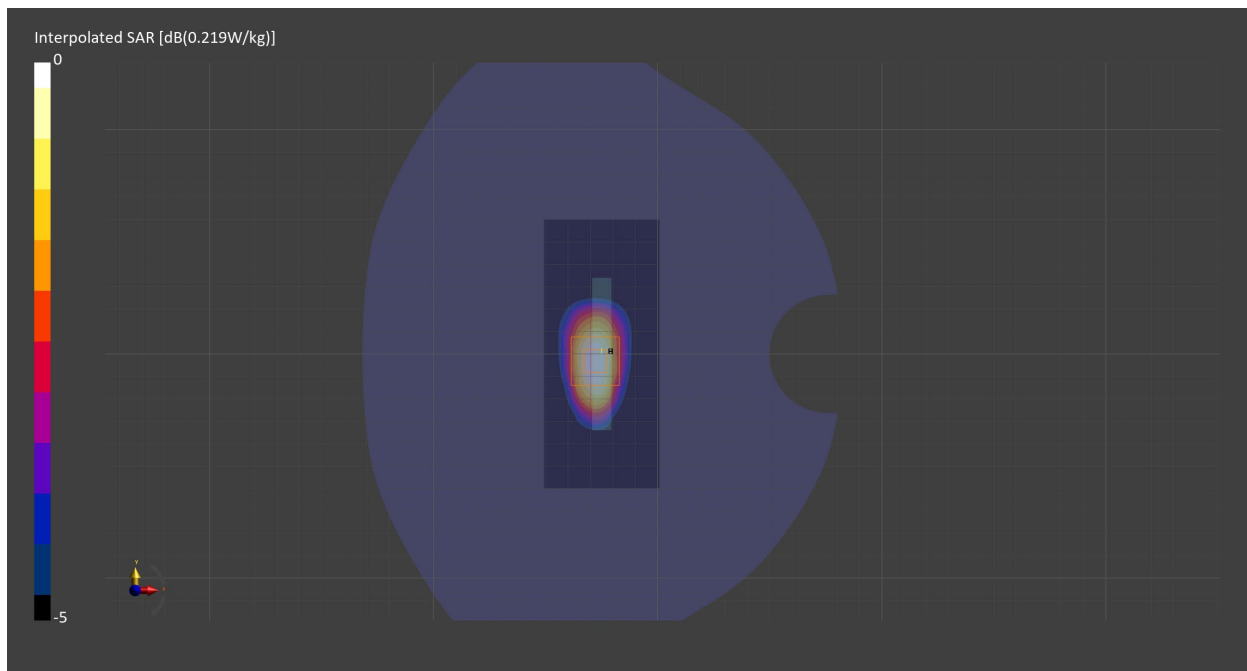
Probe   Calibration Date	EX3DV4 - SN7711   2023-03-29	Phantom	Twin-SAM V8.0 (30deg probe tilt) - SN2082
DAE   Calibration Date	DAE4 Sn1716   2023-03-16	TSL   Meas. Date	HBBL-600-10000   2023-Jul-11

## Scans Setup

	Area Scan	Zoom Scan
Grid Extents [mm]	51.6 x 120.0	30.0 x 30.0 x 30.0
Grid Steps [mm]	8.6 x 15.0	6.0 x 6.0 x 1.5
Sensor Surface [mm]	3.0	1.4
Graded Grid	n/a	Yes
M2/M1 [%]		83.2
Dist 3dB Peak [mm]		11.9

## Measurement Results

	Area Scan	Zoom Scan
psSAR1g [W/Kg]	0.178	<b>0.179</b>
psSAR10g [W/Kg]	0.099	<b>0.100</b>
Power Drift [dB]	n/a	-0.08



# Measurement Report for Band 2, CHEEK, Normal, CELL Main2

## Exposure Conditions

Band	Band 2	TSL Permittivity	38.3
Frequency [MHz]   Channel Number	1907.6   9538	TSL Conductivity [S/m]	1.43
Group   UID	WCDMA   10011-CAC	Phantom Section   TSL	RightHead   HSL
Conversion Factor	8.18	Test Distance [mm]	0.00
Communication Configuration	UMTS-FDD (WCDMA)		

## Hardware Setup

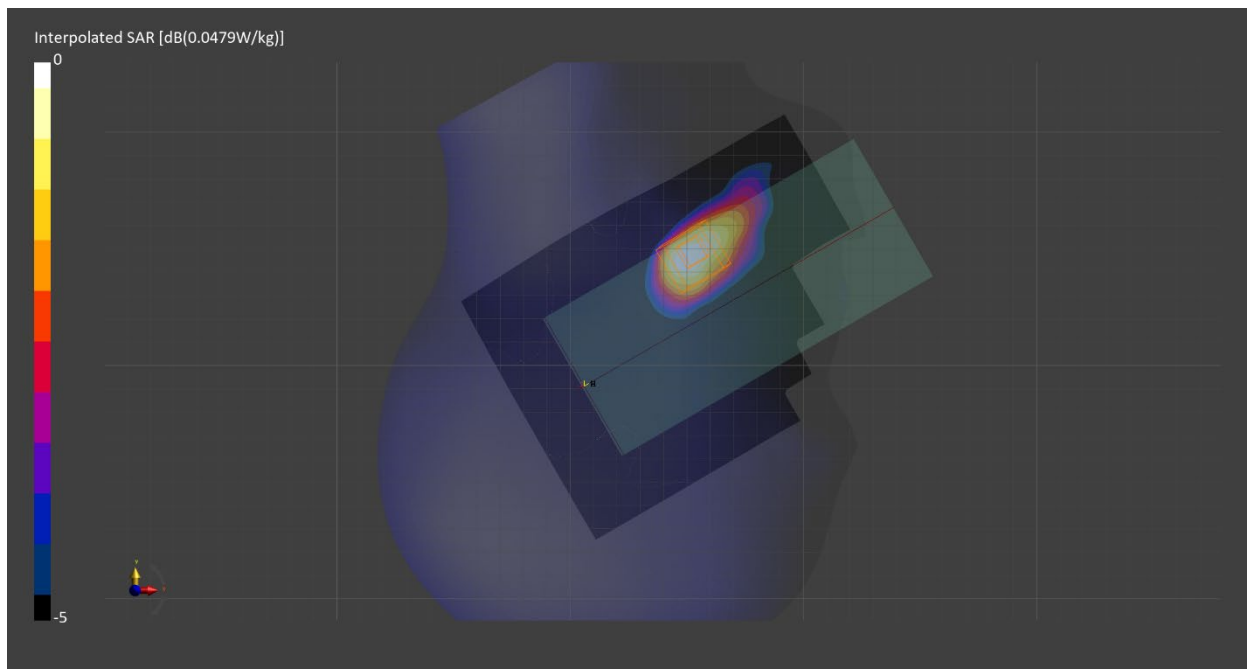
Probe   Calibration Date	EX3DV4 - SN7711   2023-03-29	Phantom	Twin-SAM V8.0 (30deg probe tilt) - SN2082
DAE   Calibration Date	DAE4 Sn1716   2023-03-16	TSL   Meas. Date	HBBL-600-10000   2023-Jul-11

## Scans Setup

	Area Scan	Zoom Scan
Grid Extents [mm]	120.0 x 210.0	30.0 x 30.0 x 30.0
Grid Steps [mm]	15.0 x 15.0	6.0 x 6.0 x 1.5
Sensor Surface [mm]	3.0	1.4
Graded Grid	n/a	Yes
M2/M1 [%]		90.9
Dist 3dB Peak [mm]		10.8

## Measurement Results

	Area Scan	Zoom Scan
psSAR1g [W/Kg]	0.041	<b>0.038</b>
psSAR10g [W/Kg]	0.022	<b>0.023</b>
Power Drift [dB]	n/a	0.06





# Measurement Report for Band 2, BACK, Normal, CELL Main2

## Exposure Conditions

Band	Band 2	TSL Permittivity	38.3
Frequency [MHz]   Channel Number	1907.6   9538	TSL Conductivity [S/m]	1.43
Group   UID	WCDMA   10011-CAC	Phantom Section   TSL	Flat   HSL
Conversion Factor	8.18	Test Distance [mm]	10.00
Communication Configuration	UMTS-FDD (WCDMA)		

## Hardware Setup

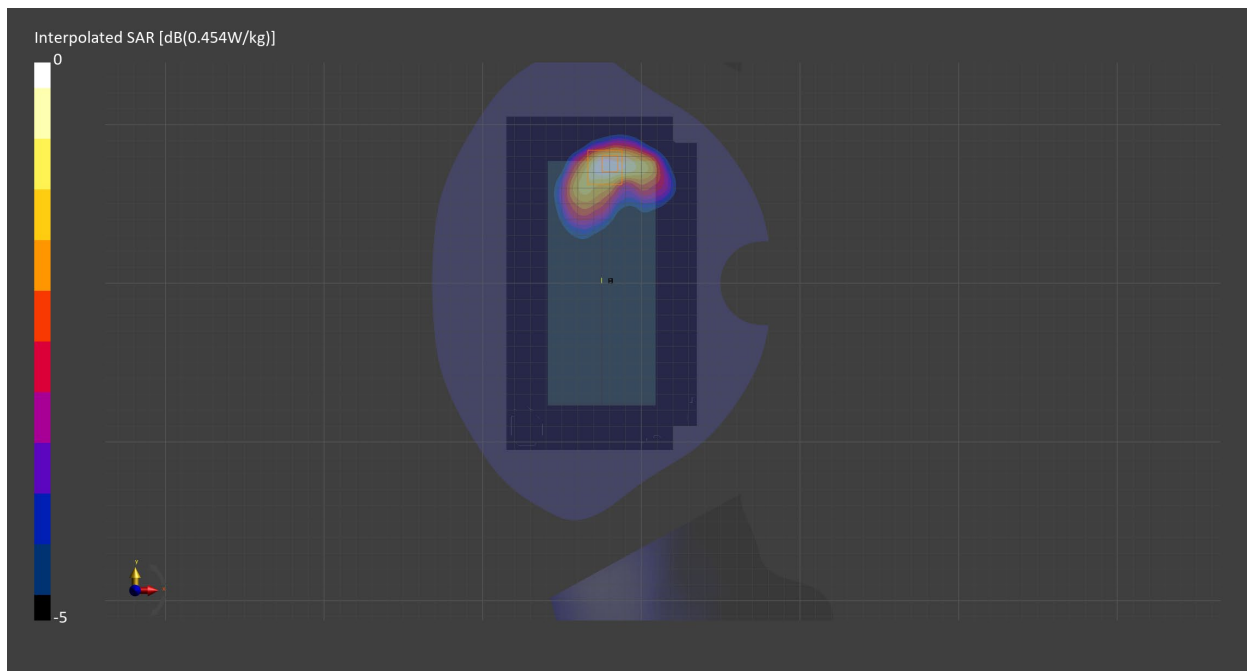
Probe   Calibration Date	EX3DV4 - SN7711   2023-03-29	Phantom	Twin-SAM V8.0 (30deg probe tilt) - SN2082
DAE   Calibration Date	DAE4 Sn1716   2023-03-16	TSL   Meas. Date	HBBL-600-10000   2023-Jul-11

## Scans Setup

	Area Scan	Zoom Scan
Grid Extents [mm]	120.0 x 210.0	30.0 x 30.0 x 30.0
Grid Steps [mm]	15.0 x 15.0	6.0 x 6.0 x 1.5
Sensor Surface [mm]	3.0	1.4
Graded Grid	n/a	Yes
M2/M1 [%]		84.4
Dist 3dB Peak [mm]		12.3

## Measurement Results

	Area Scan	Zoom Scan
psSAR1g [W/Kg]	0.259	<b>0.272</b>
psSAR10g [W/Kg]	0.148	<b>0.160</b>
Power Drift [dB]	n/a	-0.01



# Measurement Report for Band 2, EDGE BOTTOM, Normal, CELL Main2

## Exposure Conditions

Band	Band 2	TSL Permittivity	38.3
Frequency [MHz]   Channel Number	1907.6   9538	TSL Conductivity [S/m]	1.43
Group   UID	WCDMA   10011-CAC	Phantom Section   TSL	Flat   HSL
Conversion Factor	8.18	Test Distance [mm]	10.00
Communication Configuration	UMTS-FDD (WCDMA)		

## Hardware Setup

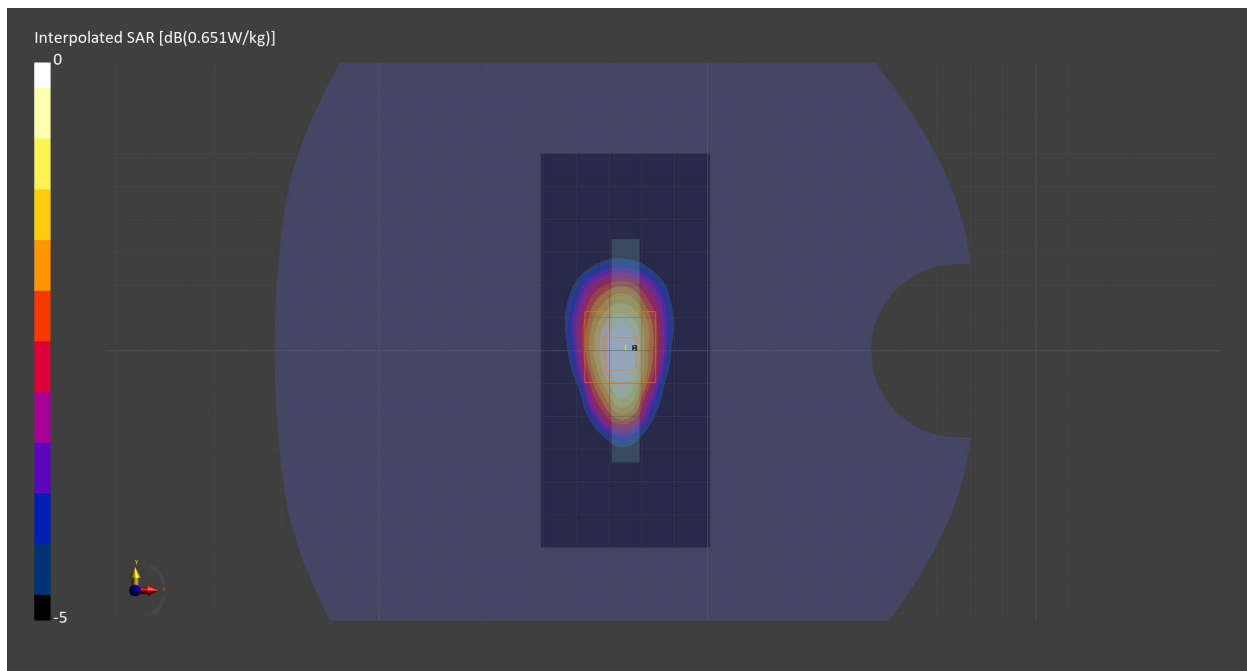
Probe   Calibration Date	EX3DV4 - SN7711   2023-03-29	Phantom	Twin-SAM V8.0 (30deg probe tilt) - SN2082
DAE   Calibration Date	DAE4 Sn1716   2023-03-16	TSL   Meas. Date	HBBL-600-10000   2023-Jul-11

## Scans Setup

	Area Scan	Zoom Scan
Grid Extents [mm]	51.6 x 120.0	30.0 x 30.0 x 30.0
Grid Steps [mm]	8.6 x 15.0	6.0 x 6.0 x 1.5
Sensor Surface [mm]	3.0	1.4
Graded Grid	n/a	Yes
M2/M1 [%]		83.2
Dist 3dB Peak [mm]		11.9

## Measurement Results

	Area Scan	Zoom Scan
psSAR1g [W/Kg]	0.361	<b>0.373</b>
psSAR10g [W/Kg]	0.199	<b>0.209</b>
Power Drift [dB]	n/a	0.01



# Measurement Report for Band 4, CHEEK, Normal, CELL Main2

## Exposure Conditions

Band	Band 4	TSL Permittivity	39.1
Frequency [MHz]   Channel Number	1732.6   1413	TSL Conductivity [S/m]	1.37
Group   UID	WCDMA   10011-CAC	Phantom Section   TSL	RightHead   HSL
Conversion Factor	9.11	Test Distance [mm]	0.00
Communication Configuration	UMTS-FDD (WCDMA)		

## Hardware Setup

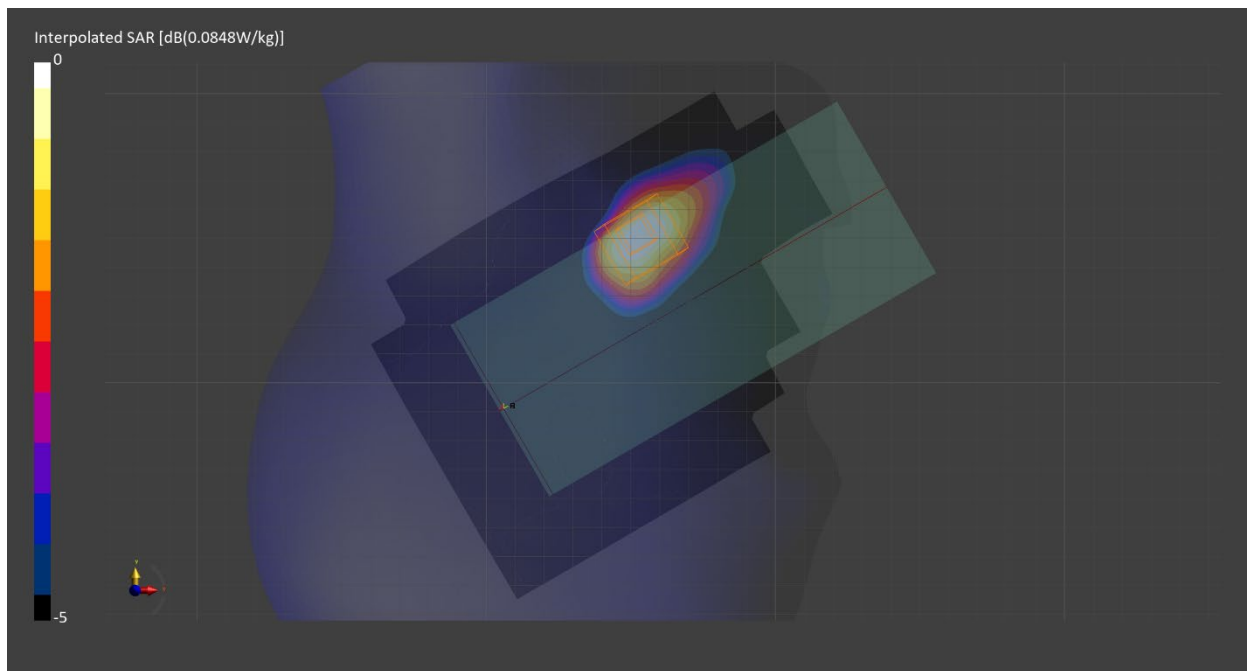
Probe   Calibration Date	EX3DV4 - SN7710   2023-02-03	Phantom	Twin-SAM V8.0 (30deg probe tilt) - SN2084
DAE   Calibration Date	DAE4 Sn1715   2023-01-23	TSL   Meas. Date	HBBL600-10000V6   2023-Jul-10

## Scans Setup

	Area Scan	Zoom Scan
Grid Extents [mm]	120.0 x 210.0	30.0 x 30.0 x 30.0
Grid Steps [mm]	15.0 x 15.0	6.0 x 6.0 x 1.5
Sensor Surface [mm]	3.0	1.4
Graded Grid	n/a	Yes
M2/M1 [%]		91.6
Dist 3dB Peak [mm]		12.5

## Measurement Results

	Area Scan	Zoom Scan
psSAR1g [W/Kg]	0.050	<b>0.054</b>
psSAR10g [W/Kg]	0.029	<b>0.033</b>
Power Drift [dB]	n/a	-0.07



# Measurement Report for Band 4, BACK, Normal, CELL Main2

## Exposure Conditions

Band	Band 4	TSL Permittivity	39.1
Frequency [MHz]   Channel Number	1732.6   1413	TSL Conductivity [S/m]	1.37
Group   UID	WCDMA   10011-CAC	Phantom Section   TSL	Flat   HSL
Conversion Factor	9.11	Test Distance [mm]	10.00
Communication Configuration	UMTS-FDD (WCDMA)		

## Hardware Setup

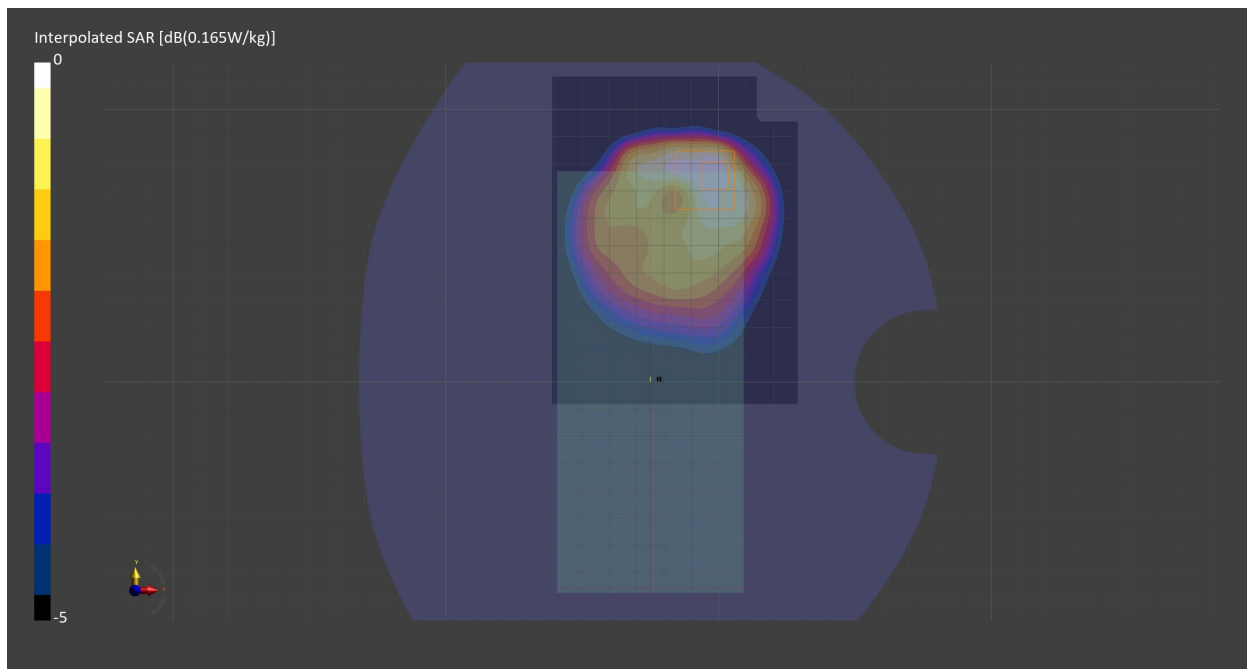
Probe   Calibration Date	EX3DV4 - SN7710   2023-02-03	Phantom	Twin-SAM V8.0 (30deg probe tilt) - SN2084
DAE   Calibration Date	DAE4 Sn1715   2023-01-23	TSL   Meas. Date	HBBL600-10000V6   2023-Jul-10

## Scans Setup

	Area Scan	Zoom Scan
Grid Extents [mm]	90.0 x 120.0	30.0 x 30.0 x 30.0
Grid Steps [mm]	15.0 x 15.0	6.0 x 6.0 x 1.5
Sensor Surface [mm]	3.0	1.4
Graded Grid	n/a	Yes
M2/M1 [%]		82.4
Dist 3dB Peak [mm]		12.0

## Measurement Results

	Area Scan	Zoom Scan
psSAR1g [W/Kg]	0.137	<b>0.143</b>
psSAR10g [W/Kg]	0.083	<b>0.084</b>
Power Drift [dB]	n/a	-0.02



# Measurement Report for Band 4, EDGE BOTTOM, Normal, CELL Main2

## Exposure Conditions

Band	Band 4	TSL Permittivity	39.1
Frequency [MHz]   Channel Number	1732.6   1413	TSL Conductivity [S/m]	1.37
Group   UID	WCDMA   10011-CAC	Phantom Section   TSL	Flat   HSL
Conversion Factor	9.11	Test Distance [mm]	10.00
Communication Configuration	UMTS-FDD (WCDMA)		

## Hardware Setup

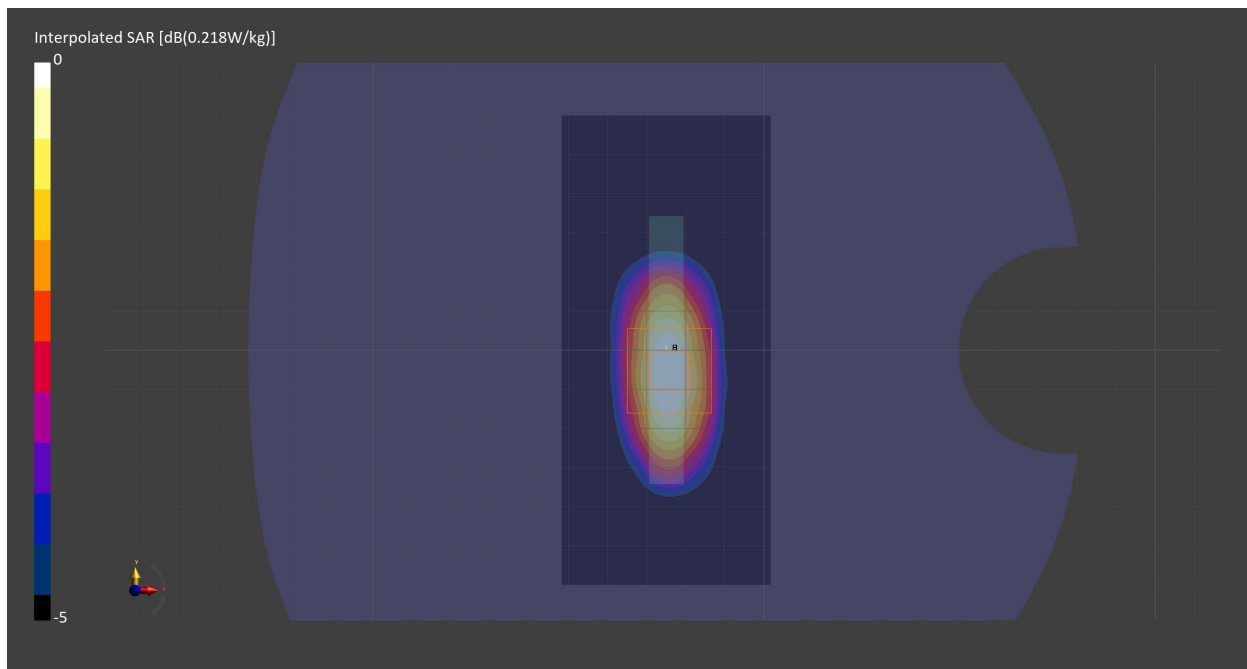
Probe   Calibration Date	EX3DV4 - SN7710   2023-02-03	Phantom	Twin-SAM V8.0 (30deg probe tilt) - SN2084
DAE   Calibration Date	DAE4 Sn1715   2023-01-23	TSL   Meas. Date	HBBL600-10000V6   2023-Jul-10

## Scans Setup

	Area Scan	Zoom Scan
Grid Extents [mm]	53.4 x 120.0	30.0 x 30.0 x 30.0
Grid Steps [mm]	8.9 x 15.0	6.0 x 6.0 x 1.5
Sensor Surface [mm]	3.0	1.4
Graded Grid	n/a	Yes
M2/M1 [%]		81.8
Dist 3dB Peak [mm]		11.9

## Measurement Results

	Area Scan	Zoom Scan
psSAR1g [W/Kg]	0.178	<b>0.180</b>
psSAR10g [W/Kg]	0.099	<b>0.101</b>
Power Drift [dB]	n/a	0.02



# Measurement Report for Band 5, CHEEK, Normal, CELL Main1

## Exposure Conditions

Band	Band 5	TSL Permittivity	40.9
Frequency [MHz]   Channel Number	836.6   4183	TSL Conductivity [S/m]	0.948
Group   UID	WCDMA   10011-CAC	Phantom Section   TSL	RightHead   HSL
Conversion Factor	10.14	Test Distance [mm]	0.00
Communication Configuration	UMTS-FDD (WCDMA)		

## Hardware Setup

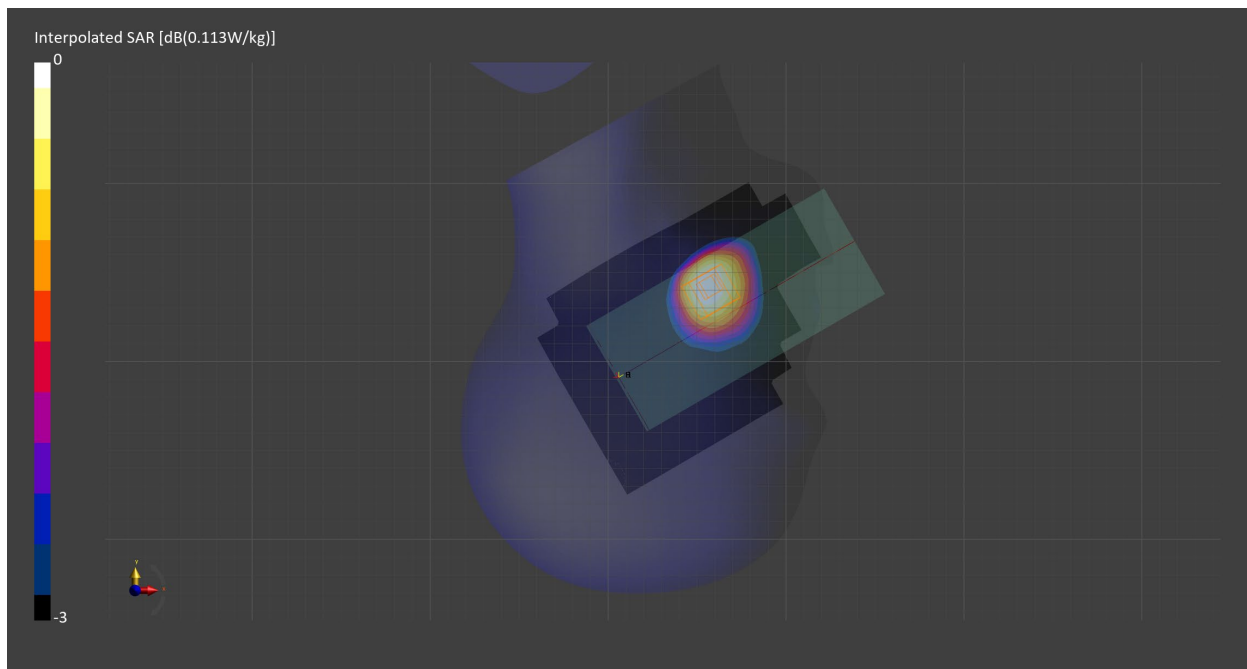
Probe   Calibration Date	EX3DV4 - SN7710   2023-02-03	Phantom	Twin-SAM V8.0 (30deg probe tilt) - SN2084
DAE   Calibration Date	DAE4 Sn1715   2023-01-23	TSL   Meas. Date	HBBL600-10000V6   2023-Jul-10

## Scans Setup

	Area Scan	Zoom Scan
Grid Extents [mm]	120.0 x 210.0	30.0 x 30.0 x 30.0
Grid Steps [mm]	15.0 x 15.0	6.0 x 6.0 x 1.5
Sensor Surface [mm]	3.0	1.4
Graded Grid	n/a	Yes
M2/M1 [%]		93.6
Dist 3dB Peak [mm]		20.6

## Measurement Results

	Area Scan	Zoom Scan
psSAR1g [W/Kg]	0.086	<b>0.089</b>
psSAR10g [W/Kg]	0.059	<b>0.068</b>
Power Drift [dB]	n/a	-0.04



# Measurement Report for Band 5, BACK, Normal, CELL Main1

## Exposure Conditions

Band	Band 5	TSL Permittivity	40.9
Frequency [MHz]   Channel Number	836.6   4183	TSL Conductivity [S/m]	0.948
Group   UID	WCDMA   10011-CAC	Phantom Section   TSL	Flat   HSL
Conversion Factor	10.14	Test Distance [mm]	10.00
Communication Configuration	UMTS-FDD (WCDMA)		

## Hardware Setup

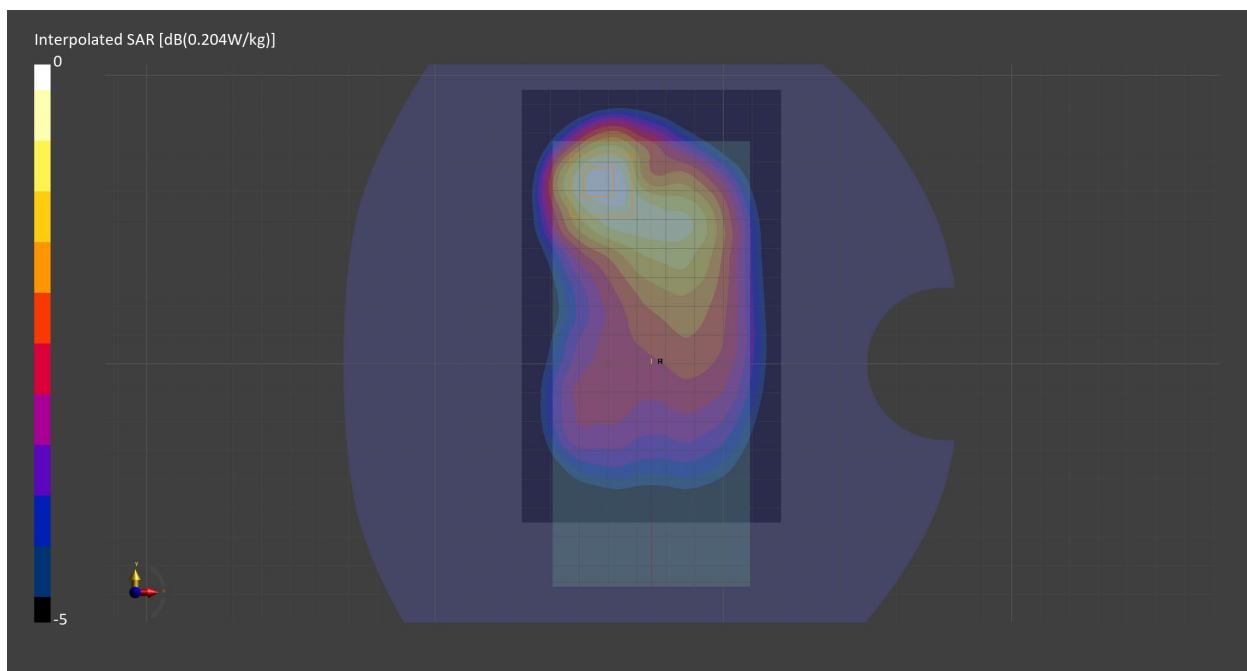
Probe   Calibration Date	EX3DV4 - SN7710   2023-02-03	Phantom	Twin-SAM V8.0 (30deg probe tilt) - SN2084
DAE   Calibration Date	DAE4 Sn1715   2023-01-23	TSL   Meas. Date	HBBL600-10000V6   2023-Jul-10

## Scans Setup

	Area Scan	Zoom Scan
Grid Extents [mm]	90.0 x 150.0	30.0 x 30.0 x 30.0
Grid Steps [mm]	15.0 x 15.0	6.0 x 6.0 x 1.5
Sensor Surface [mm]	3.0	1.4
Graded Grid	n/a	Yes
M2/M1 [%]		80.6
Dist 3dB Peak [mm]		16.7

## Measurement Results

	Area Scan	Zoom Scan
psSAR1g [W/Kg]	0.175	<b>0.176</b>
psSAR10g [W/Kg]	0.116	<b>0.105</b>
Power Drift [dB]	n/a	-0.00



# Measurement Report for Band 4, CHEEK, Normal, CELL Main1

## Exposure Conditions

Band	Band 4	TSL Permittivity	39.1
Frequency [MHz]   Channel Number	1732.5   20175	TSL Conductivity [S/m]	1.37
Group   UID	LTE-FDD   10169-CAF	Phantom Section   TSL	RightHead   HSL
Conversion Factor	9.11	Test Distance [mm]	0.00
Communication Configuration	LTE-FDD (SC-FDMA, 1 RB, 20 MHz, QPSK) RBPosition:Low AntennaCfg:SISO		

## Hardware Setup

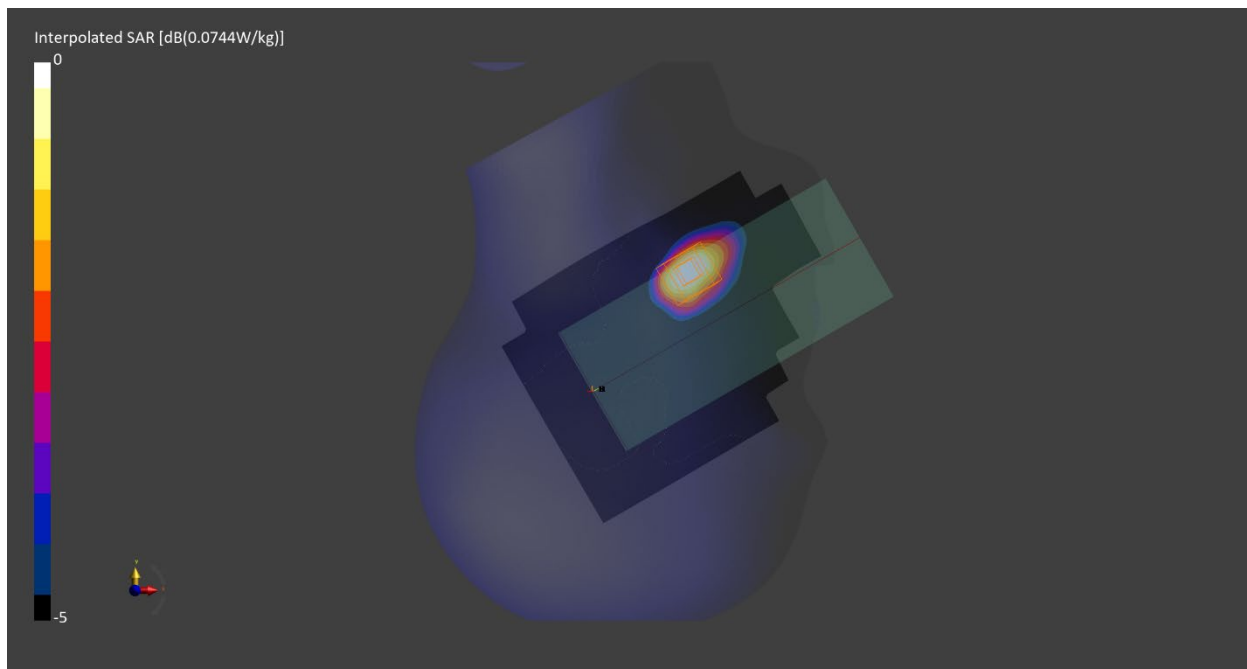
Probe   Calibration Date	EX3DV4 - SN7710   2023-02-03	Phantom	Twin-SAM V8.0 (30deg probe tilt) - SN2084
DAE   Calibration Date	DAE4 Sn1715   2023-01-23	TSL   Meas. Date	HBBL600-10000V6   2023-Jul-10

## Scans Setup

	Area Scan	Zoom Scan
Grid Extents [mm]	120.0 x 210.0	30.0 x 30.0 x 30.0
Grid Steps [mm]	15.0 x 15.0	6.0 x 6.0 x 1.5
Sensor Surface [mm]	3.0	1.4
Graded Grid	n/a	Yes
M2/M1 [%]		93.7
Dist 3dB Peak [mm]		11.5

## Measurement Results

	Area Scan	Zoom Scan
psSAR1g [W/Kg]	0.046	<b>0.048</b>
psSAR10g [W/Kg]	0.026	<b>0.029</b>
Power Drift [dB]	n/a	-0.05





# Measurement Report for Band 4, BACK, Normal, CELL Main1

## Exposure Conditions

Band	Band 4	TSL Permittivity	39.1
Frequency [MHz]   Channel Number	1732.5   20175	TSL Conductivity [S/m]	1.37
Group   UID	LTE-FDD   10297-AAE	Phantom Section   TSL	Flat   HSL
Conversion Factor	9.11	Test Distance [mm]	10.00
Communication Configuration	LTE-FDD (SC-FDMA, 50% RB, 20 MHz, QPSK) RBPosition:Low AntennaCfg:SISO		

## Hardware Setup

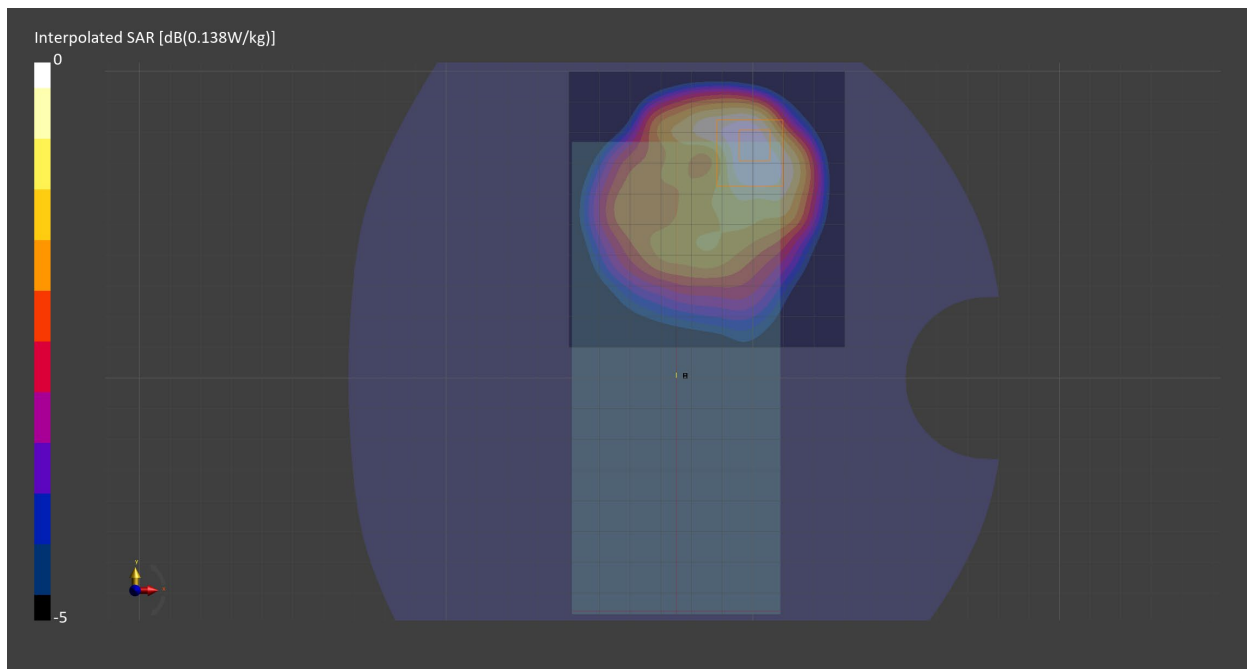
Probe   Calibration Date	EX3DV4 - SN7710   2023-02-03	Phantom	Twin-SAM V8.0 (30deg probe tilt) - SN2084
DAE   Calibration Date	DAE4 Sn1715   2023-01-23	TSL   Meas. Date	HBBL600-10000V6   2023-Jul-10

## Scans Setup

	Area Scan	Zoom Scan
Grid Extents [mm]	90.0 x 90.0	30.0 x 30.0 x 30.0
Grid Steps [mm]	15.0 x 15.0	6.0 x 6.0 x 1.5
Sensor Surface [mm]	3.0	1.4
Graded Grid	n/a	Yes
M2/M1 [%]		81.3
Dist 3dB Peak [mm]		11.4

## Measurement Results

	Area Scan	Zoom Scan
psSAR1g [W/Kg]	0.116	<b>0.126</b>
psSAR10g [W/Kg]	0.071	<b>0.073</b>
Power Drift [dB]	n/a	-0.00



# Measurement Report for Band 4, EDGE BOTTOM, Normal, CELL Main1

## Exposure Conditions

Band	Band 4	TSL Permittivity	39.1
Frequency [MHz]   Channel Number	1732.5   20175	TSL Conductivity [S/m]	1.37
Group   UID	LTE-FDD   10297-AAE	Phantom Section   TSL	Flat   HSL
Conversion Factor	9.11	Test Distance [mm]	10.00
Communication Configuration	LTE-FDD (SC-FDMA, 50% RB, 20 MHz, QPSK) RBPosition:Low AntennaCfg:SISO		

## Hardware Setup

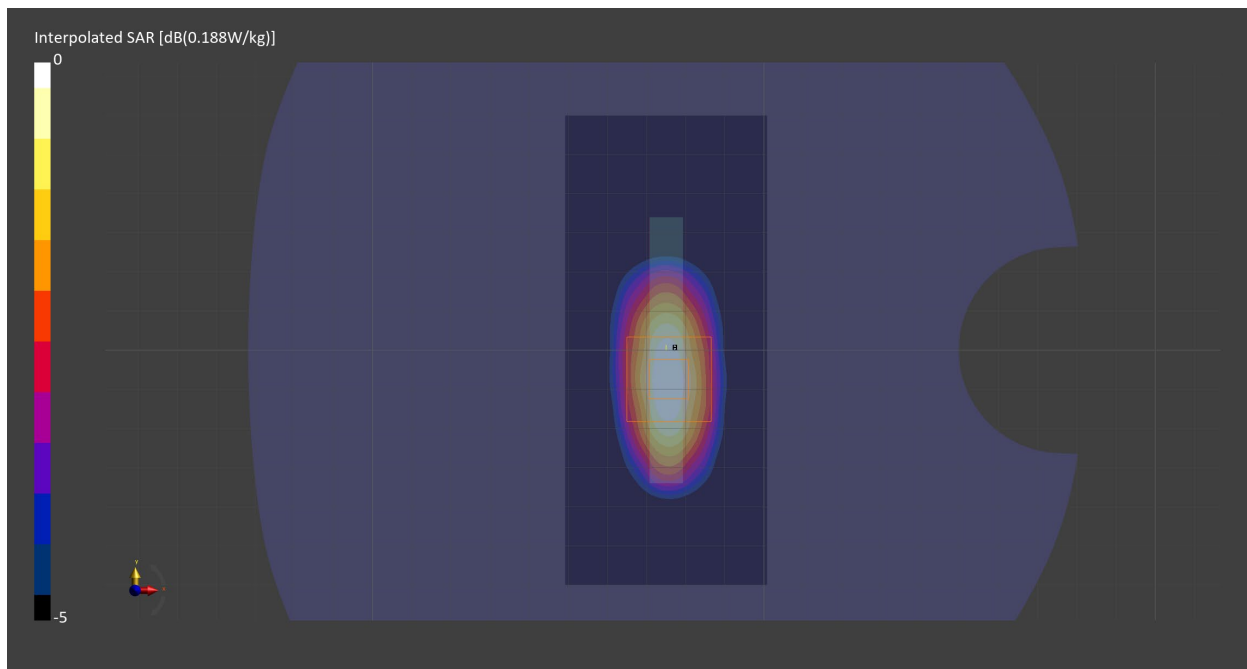
Probe   Calibration Date	EX3DV4 - SN7710   2023-02-03	Phantom	Twin-SAM V8.0 (30deg probe tilt) - SN2084
DAE   Calibration Date	DAE4 Sn1715   2023-01-23	TSL   Meas. Date	HBBL600-10000V6   2023-Jul-10

## Scans Setup

	Area Scan	Zoom Scan
Grid Extents [mm]	51.6 x 120.0	30.0 x 30.0 x 30.0
Grid Steps [mm]	8.6 x 15.0	6.0 x 6.0 x 1.5
Sensor Surface [mm]	3.0	1.4
Graded Grid	n/a	Yes
M2/M1 [%]		80.9
Dist 3dB Peak [mm]		12.0

## Measurement Results

	Area Scan	Zoom Scan
psSAR1g [W/Kg]	0.153	<b>0.155</b>
psSAR10g [W/Kg]	0.085	<b>0.087</b>
Power Drift [dB]	n/a	-0.00



# Measurement Report for Band 5, CHEEK, Normal, CELL Main1

## Exposure Conditions

Band	Band 5	TSL Permittivity	40.9
Frequency [MHz]   Channel Number	836.5   20525	TSL Conductivity [S/m]	0.948
Group   UID	LTE-FDD   10175-CAH	Phantom Section   TSL	RightHead   HSL
Conversion Factor	10.14	Test Distance [mm]	0.00
Communication Configuration	LTE-FDD (SC-FDMA, 1 RB, 10 MHz, QPSK) RBPosition:Mid AntennaCfg:SISO		

## Hardware Setup

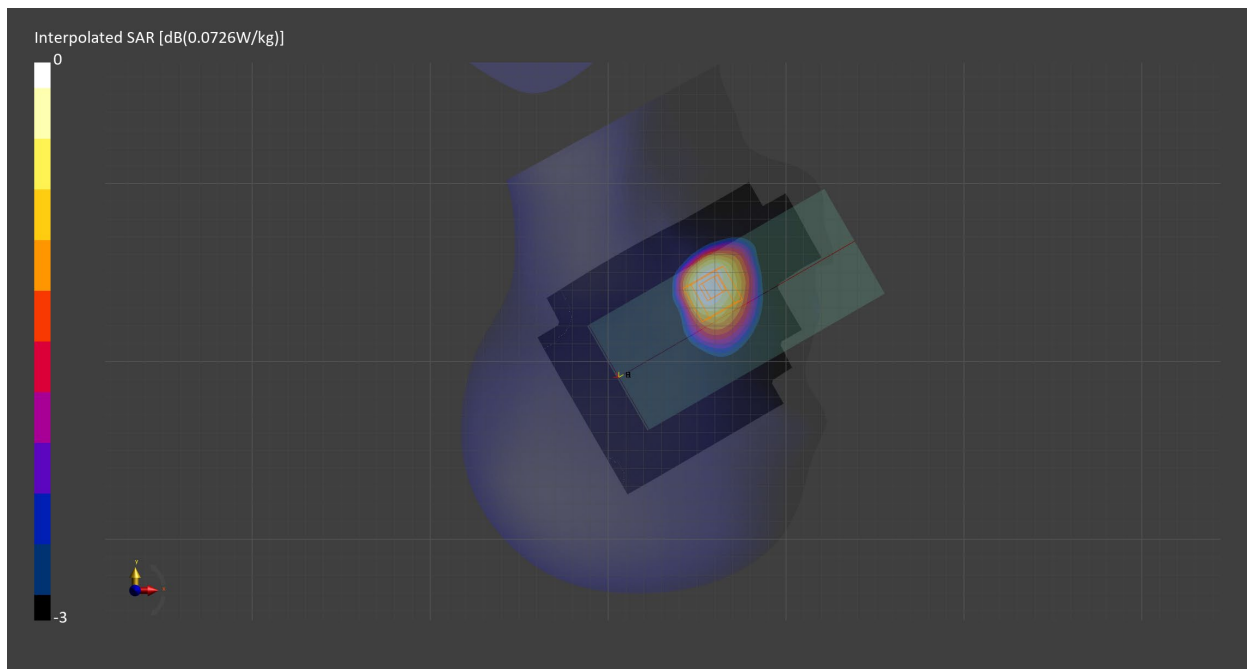
Probe   Calibration Date	EX3DV4 - SN7710   2023-02-03	Phantom	Twin-SAM V8.0 (30deg probe tilt) - SN2084
DAE   Calibration Date	DAE4 Sn1715   2023-01-23	TSL   Meas. Date	HBBL600-10000V6   2023-Jul-10

## Scans Setup

	Area Scan	Zoom Scan
Grid Extents [mm]	120.0 x 210.0	30.0 x 30.0 x 30.0
Grid Steps [mm]	15.0 x 15.0	6.0 x 6.0 x 1.5
Sensor Surface [mm]	3.0	1.4
Graded Grid	n/a	Yes
M2/M1 [%]		95.3
Dist 3dB Peak [mm]		20.6

## Measurement Results

	Area Scan	Zoom Scan
psSAR1g [W/Kg]	0.056	<b>0.058</b>
psSAR10g [W/Kg]	0.039	<b>0.045</b>
Power Drift [dB]	n/a	-0.00



# Measurement Report for Band 5, BACK, Normal, CELL Main1

## Exposure Conditions

Band	Band 5	TSL Permittivity	40.3
Frequency [MHz]   Channel Number	836.5   20525	TSL Conductivity [S/m]	0.921
Group   UID	LTE-FDD   10175-CAH	Phantom Section   TSL	Flat   HSL
Conversion Factor	9.5	Test Distance [mm]	10.00
Communication Configuration	LTE-FDD (SC-FDMA, 1 RB, 10 MHz, QPSK) RBPosition:Mid AntennaCfg:SISO		

## Hardware Setup

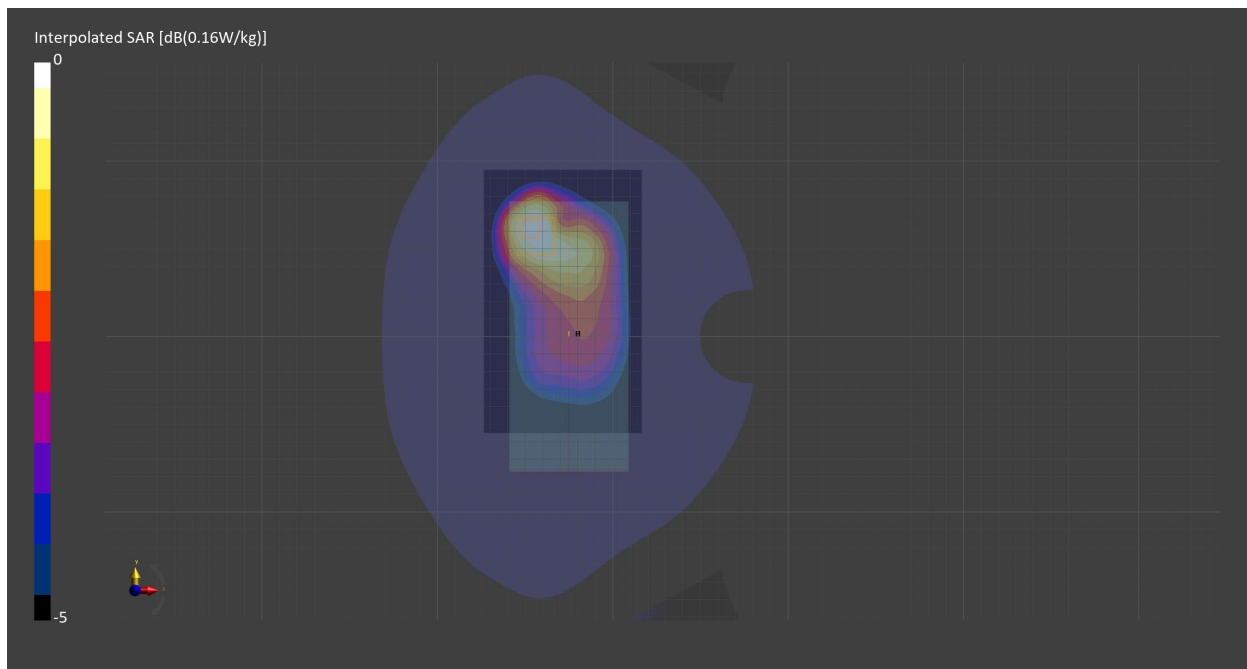
Probe   Calibration Date	EX3DV4 - SN7711   2023-03-29	Phantom	Twin-SAM V8.0 (30deg probe tilt) - SN2082
DAE   Calibration Date	DAE4 Sn1716   2023-03-16	TSL   Meas. Date	HBBL-600-10000   2023-Jul-11

## Scans Setup

	Area Scan	Zoom Scan
Grid Extents [mm]	90.0 x 150.0	30.0 x 30.0 x 30.0
Grid Steps [mm]	15.0 x 15.0	6.0 x 6.0 x 1.5
Sensor Surface [mm]	3.0	1.4
Graded Grid	n/a	Yes
M2/M1 [%]		83.6
Dist 3dB Peak [mm]		15.2

## Measurement Results

	Area Scan	Zoom Scan
psSAR1g [W/Kg]	0.138	<b>0.141</b>
psSAR10g [W/Kg]	0.092	<b>0.086</b>
Power Drift [dB]	n/a	0.03



# Measurement Report for Band 12, CHEEK, Normal, CELL Main1

## Exposure Conditions

Band	Band 12	TSL Permittivity	41.3
Frequency [MHz]   Channel Number	707.5   23095	TSL Conductivity [S/m]	0.897
Group   UID	LTE-FDD   10154-CAH	Phantom Section   TSL	RightHead   HSL
Conversion Factor	10.65	Test Distance [mm]	0.00
Communication Configuration	LTE-FDD (SC-FDMA, 50% RB, 10 MHz, QPSK) RBPosition:Low AntennaCfg:SISO		

## Hardware Setup

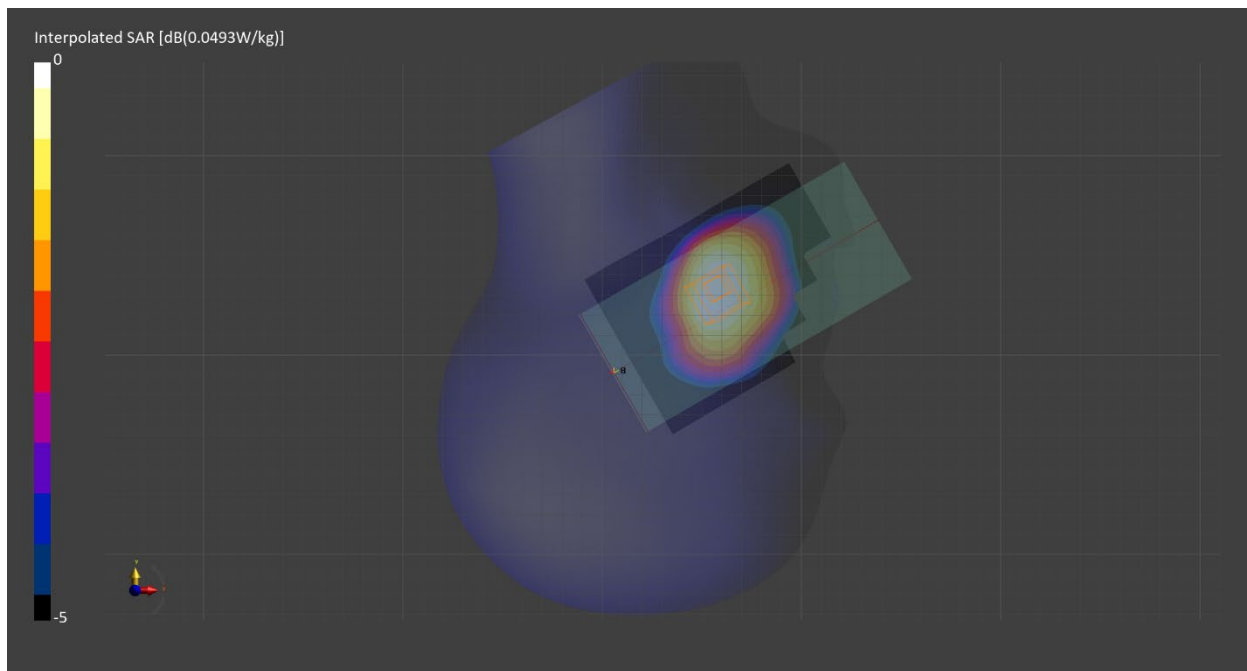
Probe   Calibration Date	EX3DV4 - SN7710   2023-02-03	Phantom	Twin-SAM V8.0 (30deg probe tilt) - SN2084
DAE   Calibration Date	DAE4 Sn1715   2023-01-23	TSL   Meas. Date	HBBL600-10000V6   2023-Jul-10

## Scans Setup

	Area Scan	Zoom Scan
Grid Extents [mm]	90.0 x 120.0	30.0 x 30.0 x 30.0
Grid Steps [mm]	15.0 x 15.0	6.0 x 6.0 x 1.5
Sensor Surface [mm]	3.0	1.4
Graded Grid	n/a	Yes
M2/M1 [%]		94.0
Dist 3dB Peak [mm]		> 15.0

## Measurement Results

	Area Scan	Zoom Scan
psSAR1g [W/Kg]	0.043	<b>0.046</b>
psSAR10g [W/Kg]	0.030	<b>0.035</b>
Power Drift [dB]	n/a	0.01



# Measurement Report for Band 12, BACK, Normal, CELL Main1

## Exposure Conditions

Band	Band 12	TSL Permittivity	41.3
Frequency [MHz]   Channel Number	707.5   23095	TSL Conductivity [S/m]	0.897
Group   UID	LTE-FDD   10154-CAH	Phantom Section   TSL	Flat   HSL
Conversion Factor	10.65	Test Distance [mm]	10.00
Communication Configuration	LTE-FDD (SC-FDMA, 50% RB, 10 MHz, QPSK) RBPosition:Low AntennaCfg:SISO		

## Hardware Setup

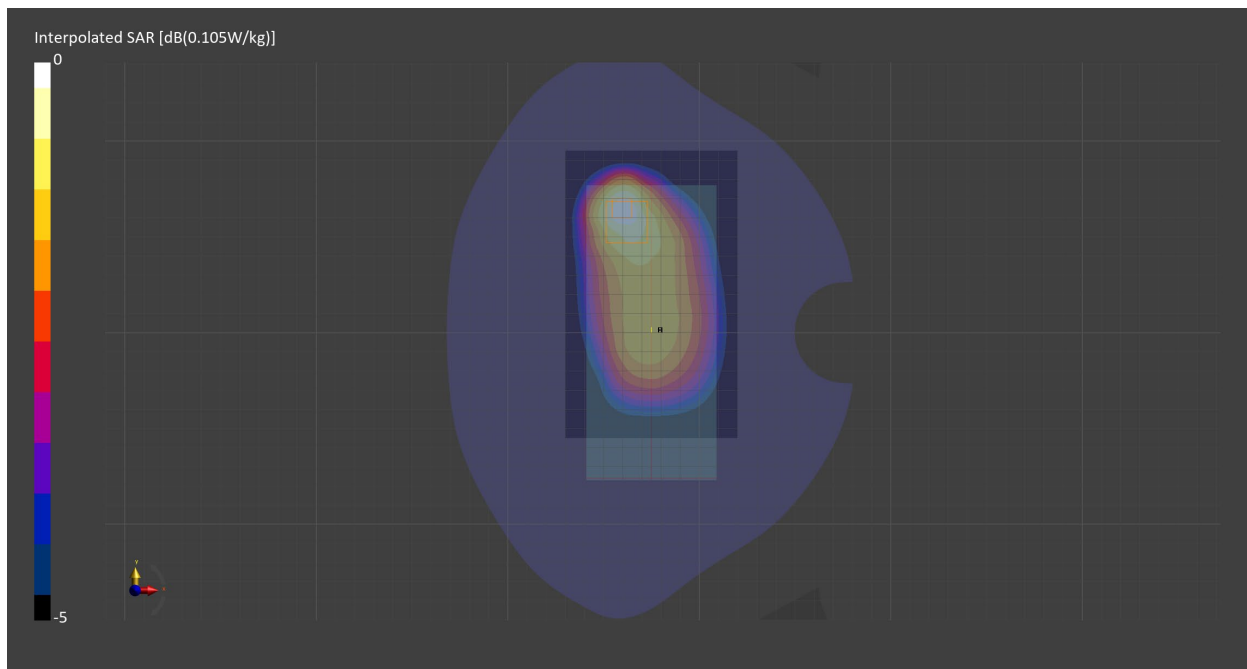
Probe   Calibration Date	EX3DV4 - SN7710   2023-02-03	Phantom	Twin-SAM V8.0 (30deg probe tilt) - SN2084
DAE   Calibration Date	DAE4 Sn1715   2023-01-23	TSL   Meas. Date	HBBL600-10000V6   2023-Jul-10

## Scans Setup

	Area Scan	Zoom Scan
Grid Extents [mm]	90.0 x 150.0	30.0 x 30.0 x 30.0
Grid Steps [mm]	15.0 x 15.0	6.0 x 6.0 x 1.5
Sensor Surface [mm]	3.0	1.4
Graded Grid	n/a	Yes
M2/M1 [%]		82.2
Dist 3dB Peak [mm]		16.7

## Measurement Results

	Area Scan	Zoom Scan
psSAR1g [W/Kg]	0.090	<b>0.088</b>
psSAR10g [W/Kg]	0.060	<b>0.056</b>
Power Drift [dB]	n/a	-0.00



# Measurement Report for Band 12, EDGE LEFT, Normal, CELL Main1

## Exposure Conditions

Band	Band 12	TSL Permittivity	41.3
Frequency [MHz]   Channel Number	707.5   23095	TSL Conductivity [S/m]	0.897
Group   UID	LTE-FDD   10154-CAH	Phantom Section   TSL	Flat   HSL
Conversion Factor	10.65	Test Distance [mm]	10.00
Communication Configuration	LTE-FDD (SC-FDMA, 50% RB, 10 MHz, QPSK) RBPosition:Low AntennaCfg:SISO		

## Hardware Setup

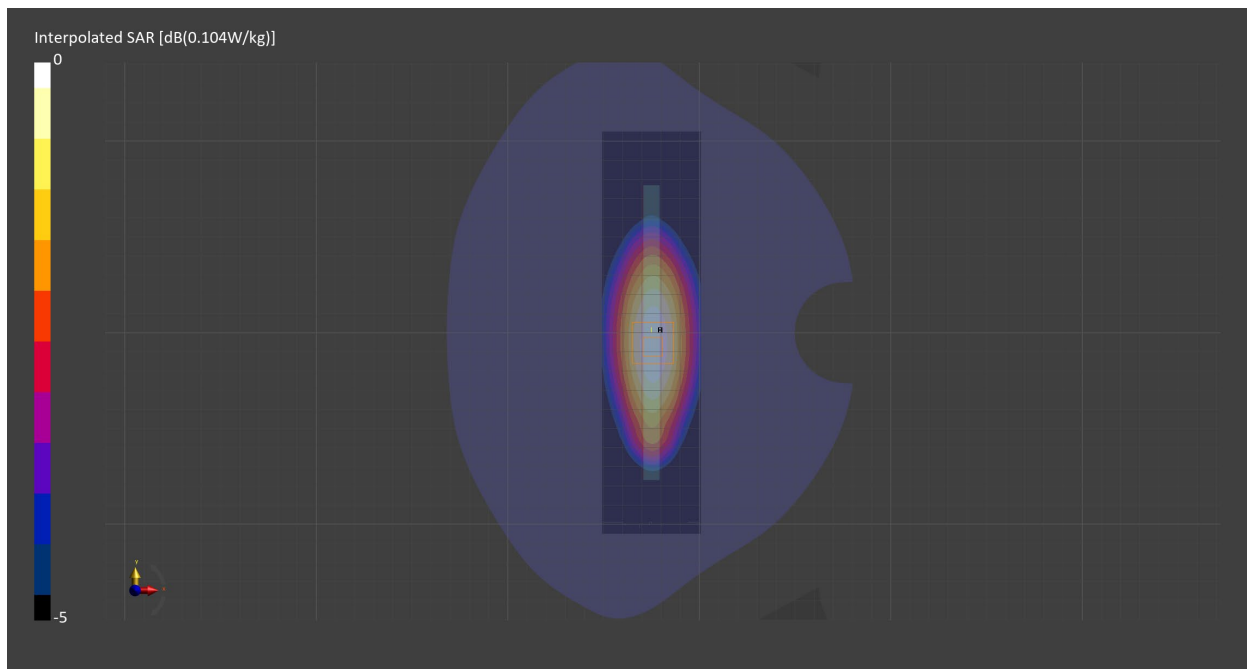
Probe   Calibration Date	EX3DV4 - SN7710   2023-02-03	Phantom	Twin-SAM V8.0 (30deg probe tilt) - SN2084
DAE   Calibration Date	DAE4 Sn1715   2023-01-23	TSL   Meas. Date	HBBL600-10000V6   2023-Jul-10

## Scans Setup

	Area Scan	Zoom Scan
Grid Extents [mm]	51.6 x 210.0	30.0 x 30.0 x 30.0
Grid Steps [mm]	8.6 x 15.0	6.0 x 6.0 x 1.5
Sensor Surface [mm]	3.0	1.4
Graded Grid	n/a	Yes
M2/M1 [%]		84.2
Dist 3dB Peak [mm]		> 15.0

## Measurement Results

	Area Scan	Zoom Scan
psSAR1g [W/Kg]	0.091	<b>0.094</b>
psSAR10g [W/Kg]	0.062	<b>0.064</b>
Power Drift [dB]	n/a	0.03



# Measurement Report for Band 13, CHEEK, Normal, CELL Main1

## Exposure Conditions

Band	Band 13	TSL Permittivity	41.1
Frequency [MHz]   Channel Number	782.0   23230	TSL Conductivity [S/m]	0.925
Group   UID	LTE-FDD   10175-CAH	Phantom Section   TSL	RightHead   HSL
Conversion Factor	10.65	Test Distance [mm]	0.00
Communication Configuration	LTE-FDD (SC-FDMA, 1 RB, 10 MHz, QPSK) RBPosition:Low AntennaCfg:SISO		

## Hardware Setup

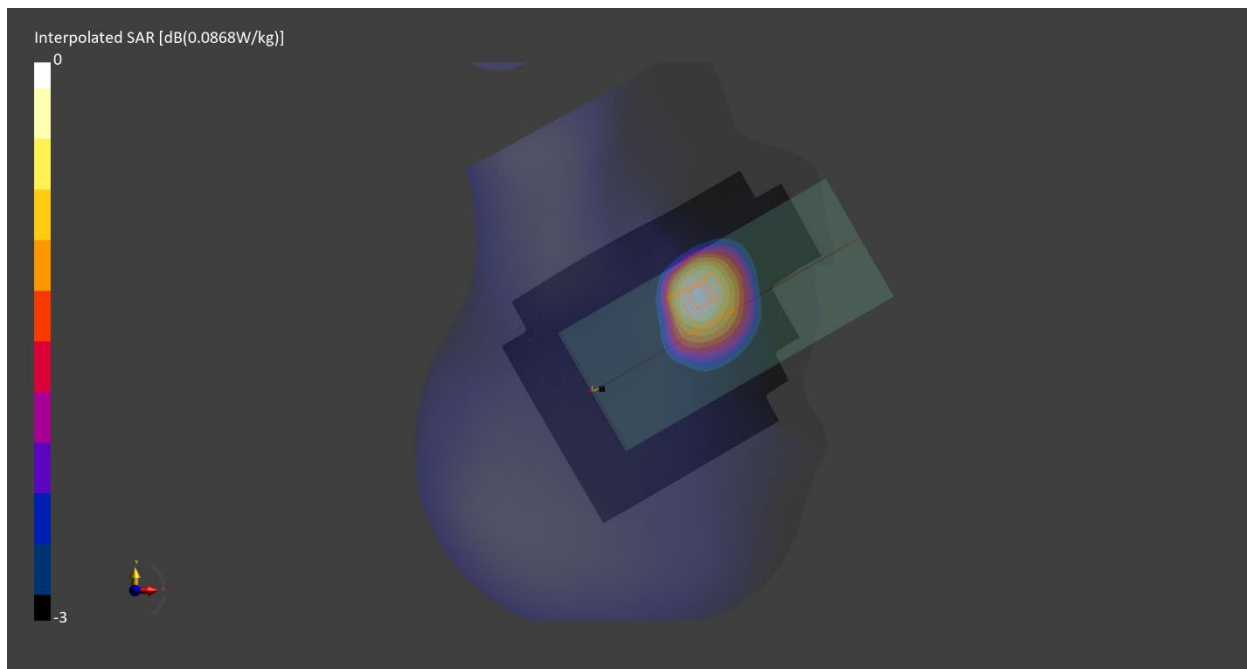
Probe   Calibration Date	EX3DV4 - SN7710   2023-02-03	Phantom	Twin-SAM V8.0 (30deg probe tilt) - SN2084
DAE   Calibration Date	DAE4 Sn1715   2023-01-23	TSL   Meas. Date	HBBL600-10000V6   2023-Jul-10

## Scans Setup

	Area Scan	Zoom Scan
Grid Extents [mm]	120.0 x 210.0	30.0 x 30.0 x 30.0
Grid Steps [mm]	15.0 x 15.0	6.0 x 6.0 x 1.5
Sensor Surface [mm]	3.0	1.4
Graded Grid	n/a	Yes
M2/M1 [%]		93.8
Dist 3dB Peak [mm]		20.4

## Measurement Results

	Area Scan	Zoom Scan
psSAR1g [W/Kg]	0.067	<b>0.069</b>
psSAR10g [W/Kg]	0.046	<b>0.053</b>
Power Drift [dB]	n/a	-0.01





# Measurement Report for Band 13, BACK, Normal, CELL Main1

## Exposure Conditions

Band	Band 13	TSL Permittivity	41.1
Frequency [MHz]   Channel Number	782.0   23230	TSL Conductivity [S/m]	0.925
Group   UID	LTE-FDD   10154-CAH	Phantom Section   TSL	Flat   HSL
Conversion Factor	10.65	Test Distance [mm]	10.00
Communication Configuration	LTE-FDD (SC-FDMA, 50% RB, 10 MHz, QPSK) RBPosition:Low AntennaCfg:SISO		

## Hardware Setup

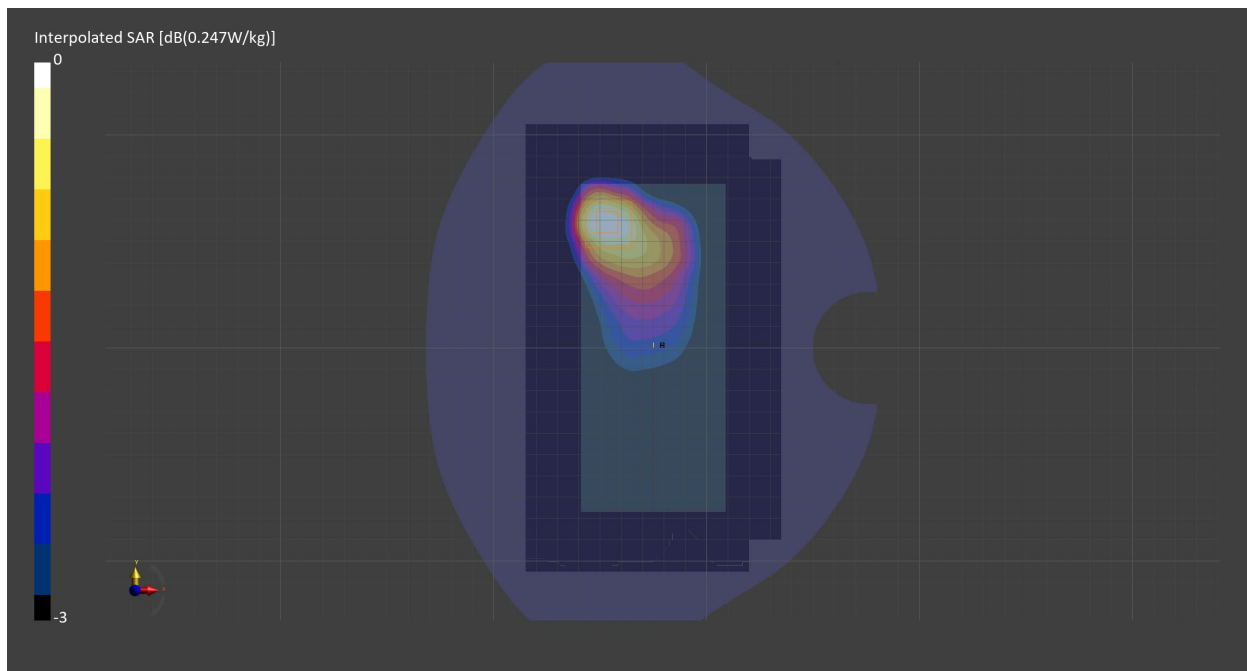
Probe   Calibration Date	EX3DV4 - SN7710   2023-02-03	Phantom	Twin-SAM V8.0 (30deg probe tilt) - SN2084
DAE   Calibration Date	DAE4 Sn1715   2023-01-23	TSL   Meas. Date	HBBL600-10000V6   2023-Jul-10

## Scans Setup

	Area Scan	Zoom Scan
Grid Extents [mm]	120.0 x 210.0	30.0 x 30.0 x 30.0
Grid Steps [mm]	15.0 x 15.0	6.0 x 6.0 x 1.5
Sensor Surface [mm]	3.0	1.4
Graded Grid	n/a	Yes
M2/M1 [%]		83.3
Dist 3dB Peak [mm]		20.4

## Measurement Results

	Area Scan	Zoom Scan
psSAR1g [W/Kg]	0.149	<b>0.150</b>
psSAR10g [W/Kg]	0.101	<b>0.095</b>
Power Drift [dB]	n/a	-0.01



# Measurement Report for Band 41, CHEEK, Normal, CELL Main1

## Exposure Conditions

Band	Band 41	TSL Permittivity	38.0
Frequency [MHz]   Channel Number	2506.0   39750	TSL Conductivity [S/m]	1.85
Group   UID	LTE-TDD   10435-AAG	Phantom Section   TSL	RightHead   HSL
Conversion Factor	7.67	Test Distance [mm]	0.00
Communication Configuration	LTE-TDD (SC-FDMA, 1 RB, 20 MHz, QPSK, UL Subframe=2,3,4,7,8,9) RBPosition:Mid AntennaCfg:SISO		

## Hardware Setup

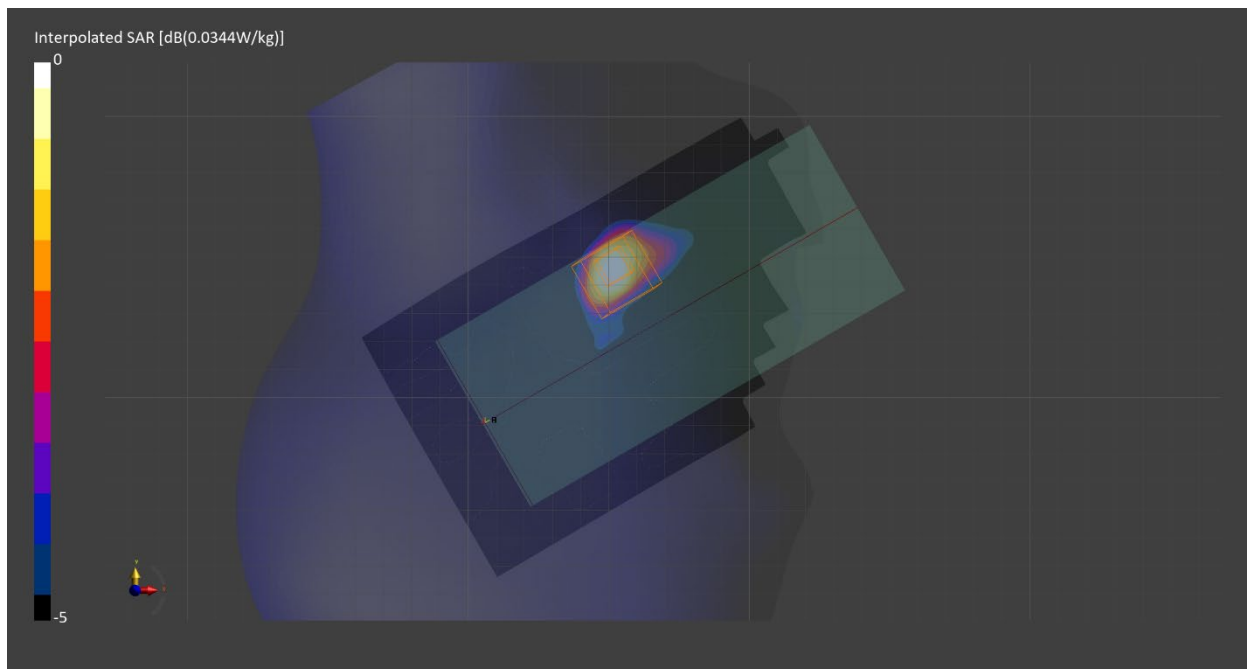
Probe   Calibration Date	EX3DV4 - SN7711   2023-03-29	Phantom	Twin-SAM V8.0 (30deg probe tilt) - SN2082
DAE   Calibration Date	DAE4 Sn1716   2023-03-16	TSL   Meas. Date	HBBL-600-10000   2023-Jul-10

## Scans Setup

	Area Scan	Zoom Scan
Grid Extents [mm]	100.0 x 200.0	30.0 x 30.0 x 30.0
Grid Steps [mm]	10.0 x 10.0	5.0 x 5.0 x 1.5
Sensor Surface [mm]	3.0	1.4
Graded Grid	n/a	Yes
M2/M1 [%]		86.3
Dist 3dB Peak [mm]		6.4

## Measurement Results

	Area Scan	Zoom Scan
psSAR1g [W/Kg]	0.027	<b>0.026</b>
psSAR10g [W/Kg]	0.013	<b>0.012</b>
Power Drift [dB]	n/a	-0.12



# Measurement Report for Band 41, BACK, Normal, CELL Main1

## Exposure Conditions

Band	Band 41	TSL Permittivity	38.0
Frequency [MHz]   Channel Number	2506.0   39750	TSL Conductivity [S/m]	1.85
Group   UID	LTE-TDD   10494-AAG	Phantom Section   TSL	Flat   HSL
Conversion Factor	7.67	Test Distance [mm]	10.00
Communication Configuration	LTE-TDD (SC-FDMA, 50% RB, 20 MHz, QPSK, UL Subframe=2,3,4,7,8,9) RBPosition:Mid AntennaCfg:SISO		

## Hardware Setup

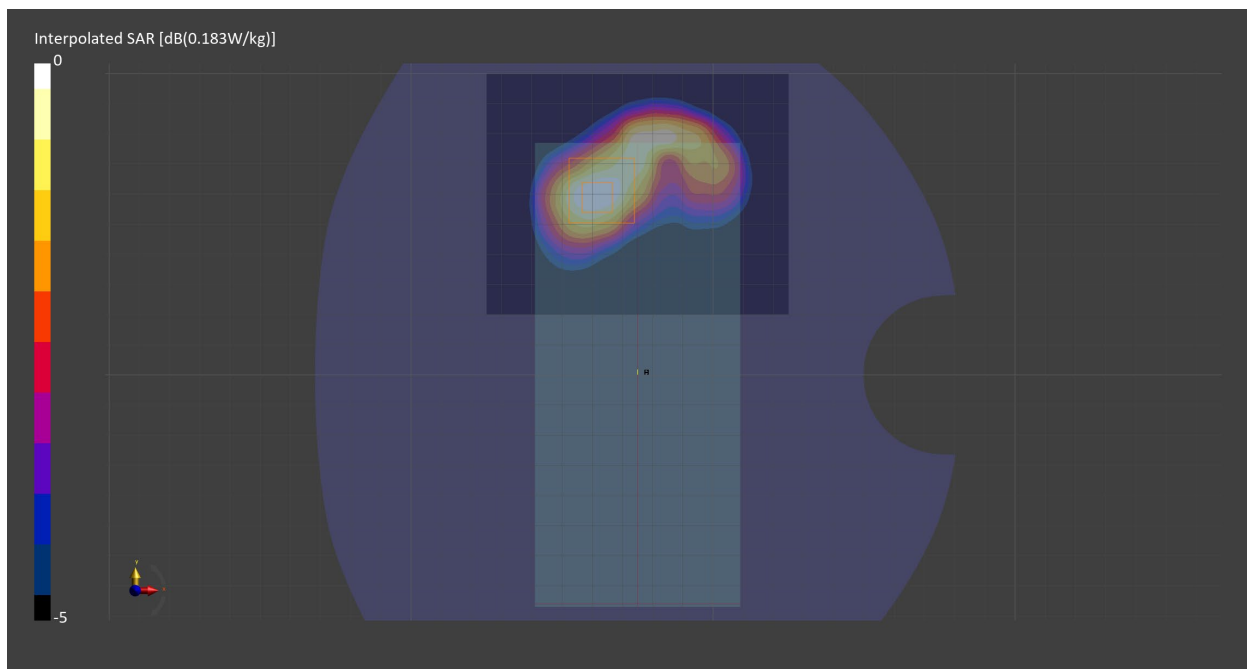
Probe   Calibration Date	EX3DV4 - SN7711   2023-03-29	Phantom	Twin-SAM V8.0 (30deg probe tilt) - SN2082
DAE   Calibration Date	DAE4 Sn1716   2023-03-16	TSL   Meas. Date	HBBL-600-10000   2023-Jul-10

## Scans Setup

	Area Scan	Zoom Scan
Grid Extents [mm]	100.0 x 80.0	30.0 x 30.0 x 30.0
Grid Steps [mm]	10.0 x 10.0	5.0 x 5.0 x 1.5
Sensor Surface [mm]	3.0	1.4
Graded Grid	n/a	Yes
M2/M1 [%]		80.3
Dist 3dB Peak [mm]		14.2

## Measurement Results

	Area Scan	Zoom Scan
psSAR1g [W/Kg]	0.147	<b>0.149</b>
psSAR10g [W/Kg]	0.078	<b>0.082</b>
Power Drift [dB]	n/a	-0.00



# Measurement Report for Band 41, EDGE BOTTOM, Normal, CELL Main1

## Exposure Conditions

Band	Band 41	TSL Permittivity	38.0
Frequency [MHz]   Channel Number	2506.0   39750	TSL Conductivity [S/m]	1.85
Group   UID	LTE-TDD   10494-AAG	Phantom Section   TSL	Flat   HSL
Conversion Factor	7.67	Test Distance [mm]	10.00
Communication Configuration	LTE-TDD (SC-FDMA, 50% RB, 20 MHz, QPSK, UL Subframe=2,3,4,7,8,9) RBPosition:Mid AntennaCfg:SISO		

## Hardware Setup

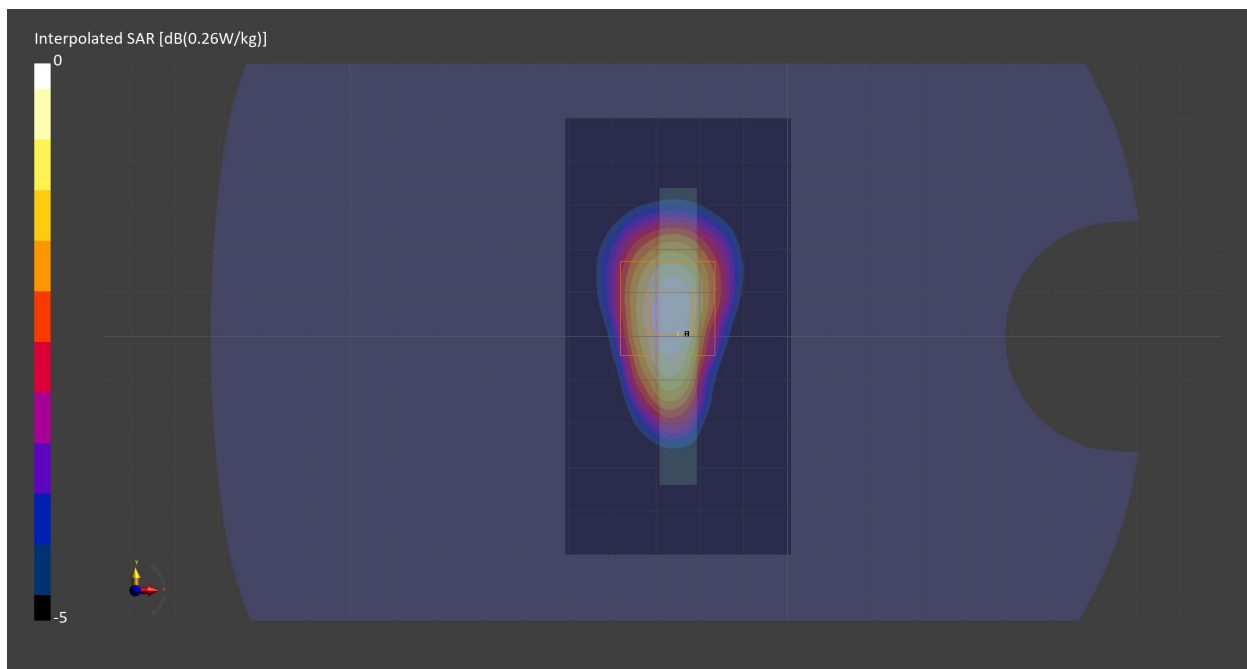
Probe   Calibration Date	EX3DV4 - SN7711   2023-03-29	Phantom	Twin-SAM V8.0 (30deg probe tilt) - SN2082
DAE   Calibration Date	DAE4 Sn1716   2023-03-16	TSL   Meas. Date	HBBL-600-10000   2023-Jul-10

## Scans Setup

	Area Scan	Zoom Scan
Grid Extents [mm]	51.6 x 100.0	30.0 x 30.0 x 30.0
Grid Steps [mm]	8.6 x 10.0	5.0 x 5.0 x 1.5
Sensor Surface [mm]	3.0	1.4
Graded Grid	n/a	Yes
M2/M1 [%]		80.3
Dist 3dB Peak [mm]		11.5

## Measurement Results

	Area Scan	Zoom Scan
psSAR1g [W/Kg]	0.203	<b>0.206</b>
psSAR10g [W/Kg]	0.105	<b>0.107</b>
Power Drift [dB]	n/a	-0.02



# Measurement Report for WLAN 2.4GHz, CHEEK, Normal, WiFi Main

## Exposure Conditions

Band	WLAN 2.4GHz	TSL Permittivity	38.1
Frequency [MHz]   Channel Number	2412.0   1	TSL Conductivity [S/m]	1.78
Group   UID	WLAN   10012-CAB	Phantom Section   TSL	RightHead   HSL
Conversion Factor	7.97	Test Distance [mm]	0.00
Communication Configuration	IEEE 802.11b WiFi 2.4 GHz (DSSS, 1 Mbps)		

## Hardware Setup

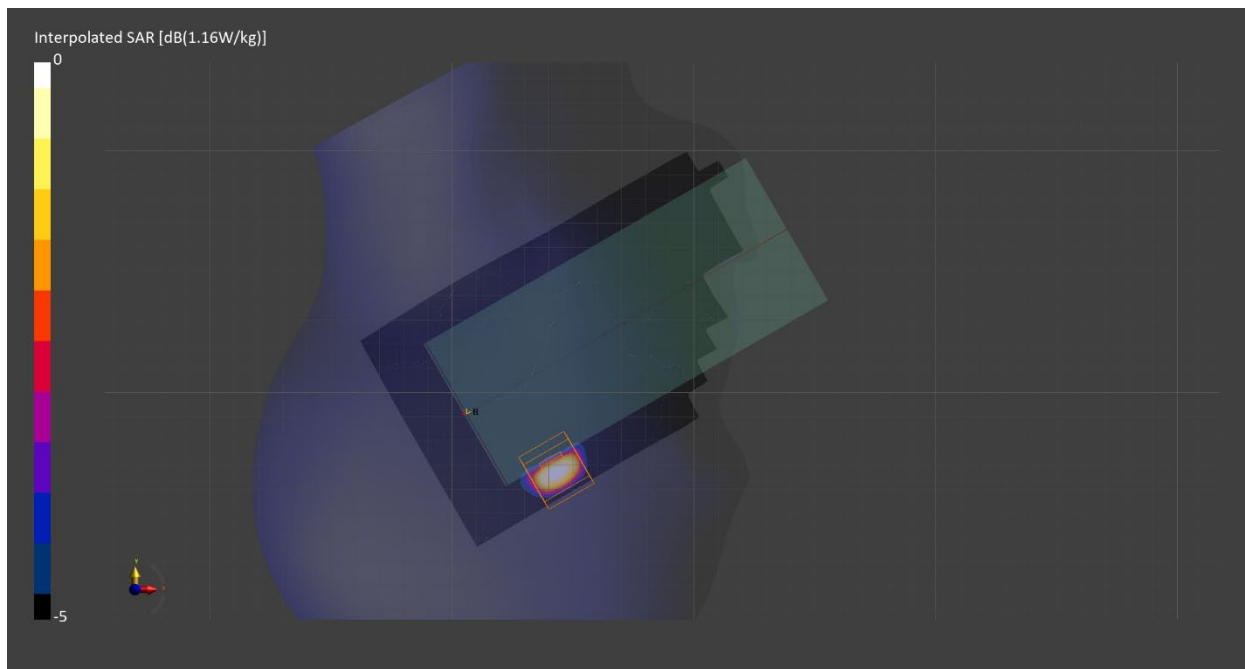
Probe   Calibration Date	EX3DV4 - SN7711   2023-03-29	Phantom	Twin-SAM V8.0 (30deg probe tilt) - SN2082
DAE   Calibration Date	DAE4 Sn1716   2023-03-16	TSL   Meas. Date	HBBL-600-10000   2023-Jul-10

## Scans Setup

	Area Scan	Zoom Scan
Grid Extents [mm]	100.0 x 200.0	30.0 x 30.0 x 30.0
Grid Steps [mm]	10.0 x 10.0	4.2 x 4.2 x 1.5
Sensor Surface [mm]	3.0	1.4
Graded Grid	n/a	Yes
M2/M1 [%]		73.3
Dist 3dB Peak [mm]		4.3

## Measurement Results

	Area Scan	Zoom Scan
psSAR1g [W/Kg]	0.418	<b>0.437</b>
psSAR10g [W/Kg]	0.159	<b>0.158</b>
Power Drift [dB]	n/a	-0.00



# Measurement Report for WLAN 5GHz, EDGE LEFT, Normal, WiFi Main

## Exposure Conditions

Band	WLAN 5GHz	TSL Permittivity	34.4
Frequency [MHz]   Channel Number	5795.0   159	TSL Conductivity [S/m]	5.18
Group   UID	WLAN   10114-CAD	Phantom Section   TSL	Flat   HSL
Conversion Factor	5.4	Test Distance [mm]	0.00
Communication Configuration	IEEE 802.11n (HT Greenfield, 13.5 Mbps, BPSK)		

## Hardware Setup

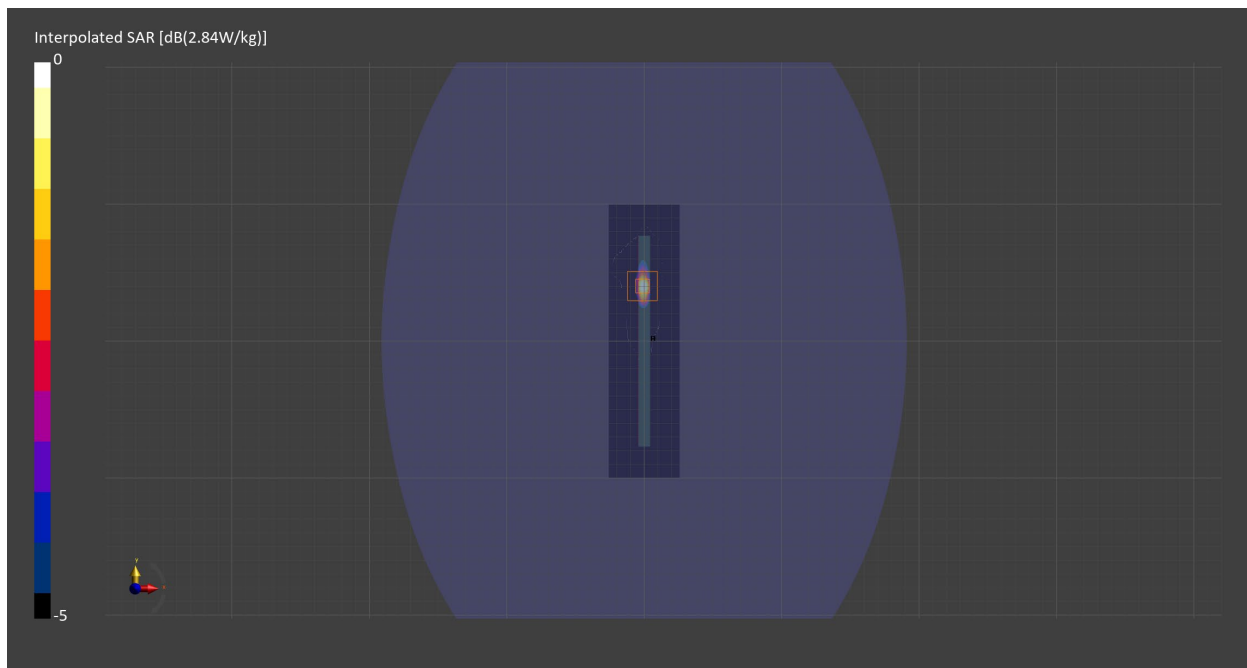
Probe   Calibration Date	EX3DV4 - SN7709   2022-12-12	Phantom	ELI V5.0 (20deg probe tilt) - SN1196
DAE   Calibration Date	DAE4 Sn1714   2022-11-23	TSL   Meas. Date	HBBL-600-10000   2023-Jul-24

## Scans Setup

	Area Scan	Zoom Scan
Grid Extents [mm]	51.6 x 200.0	22.0 x 22.0 x 22.0
Grid Steps [mm]	8.6 x 10.0	3.4 x 3.4 x 1.4
Sensor Surface [mm]	3.0	1.4
Graded Grid	n/a	Yes
M2/M1 [%]		48.4
Dist 3dB Peak [mm]		4.1

## Measurement Results

	Area Scan	Zoom Scan
psSAR1g [W/Kg]	1.62	<b>1.80</b>
psSAR10g [W/Kg]	0.398	<b>0.396</b>
Power Drift [dB]	n/a	-0.00



# Measurement Report for ISM 2.4 GHz Band, CHEEK, Normal, WiFi Main

## Exposure Conditions

Band	ISM 2.4 GHz Band	TSL Permittivity	38.0
Frequency [MHz]   Channel Number	2480.0   78	TSL Conductivity [S/m]	1.83
Group   UID	Bluetooth   10030-CAA	Phantom Section   TSL	RightHead   HSL
Conversion Factor	7.97	Test Distance [mm]	0.00
Communication Configuration	IEEE 802.15.1 Bluetooth (GFSK, DH1)		

## Hardware Setup

Probe   Calibration Date	EX3DV4 - SN7711   2023-03-29	Phantom	Twin-SAM V8.0 (30deg probe tilt) - SN2082
DAE   Calibration Date	DAE4 Sn1716   2023-03-16	TSL   Meas. Date	HBBL-600-10000   2023-Jul-10

## Scans Setup

	Area Scan	Zoom Scan
Grid Extents [mm]	100.0 x 200.0	30.0 x 30.0 x 30.0
Grid Steps [mm]	10.0 x 10.0	4.6 x 4.6 x 1.5
Sensor Surface [mm]	3.0	1.4
Graded Grid	n/a	Yes
M2/M1 [%]		79.4
Dist 3dB Peak [mm]		4.7

## Measurement Results

	Area Scan	Zoom Scan
psSAR1g [W/Kg]	0.250	<b>0.257</b>
psSAR10g [W/Kg]	0.093	<b>0.092</b>
Power Drift [dB]	n/a	-0.12

