

## 20170711\_SystemPerformanceCheck-D750V3 SN 1024

Frequency: 750 MHz; Duty Cycle: 1:1; Room Ambient Temperature: 24.0°C; Liquid Temperature: 23.0°C

Medium parameters used:  $f = 750 \text{ MHz}$ ;  $\sigma = 0.968 \text{ S/m}$ ;  $\epsilon_r = 53.456$ ;  $\rho = 1000 \text{ kg/m}^3$

DASY5 Configuration:

- Area Scan Setting: Find Secondary Maximum Within: 2.0 dB and with a peak SAR value greater than 0.0012W/kg
- Electronics: DAE4 Sn1259; Calibrated: 1/20/2017
- Probe: EX3DV4 - SN3751; ConvF(9.13, 9.13, 9.13); Calibrated: 11/17/2016;
- Sensor-Surface: 2.5mm (Mechanical Surface Detection)
- Phantom: ELI-B v5.0; Type: QDOVA002AA; Serial: TP:1195

**Body/Pin=100 mW/Area Scan (7x7x1):** Measurement grid: dx=15mm, dy=15mm

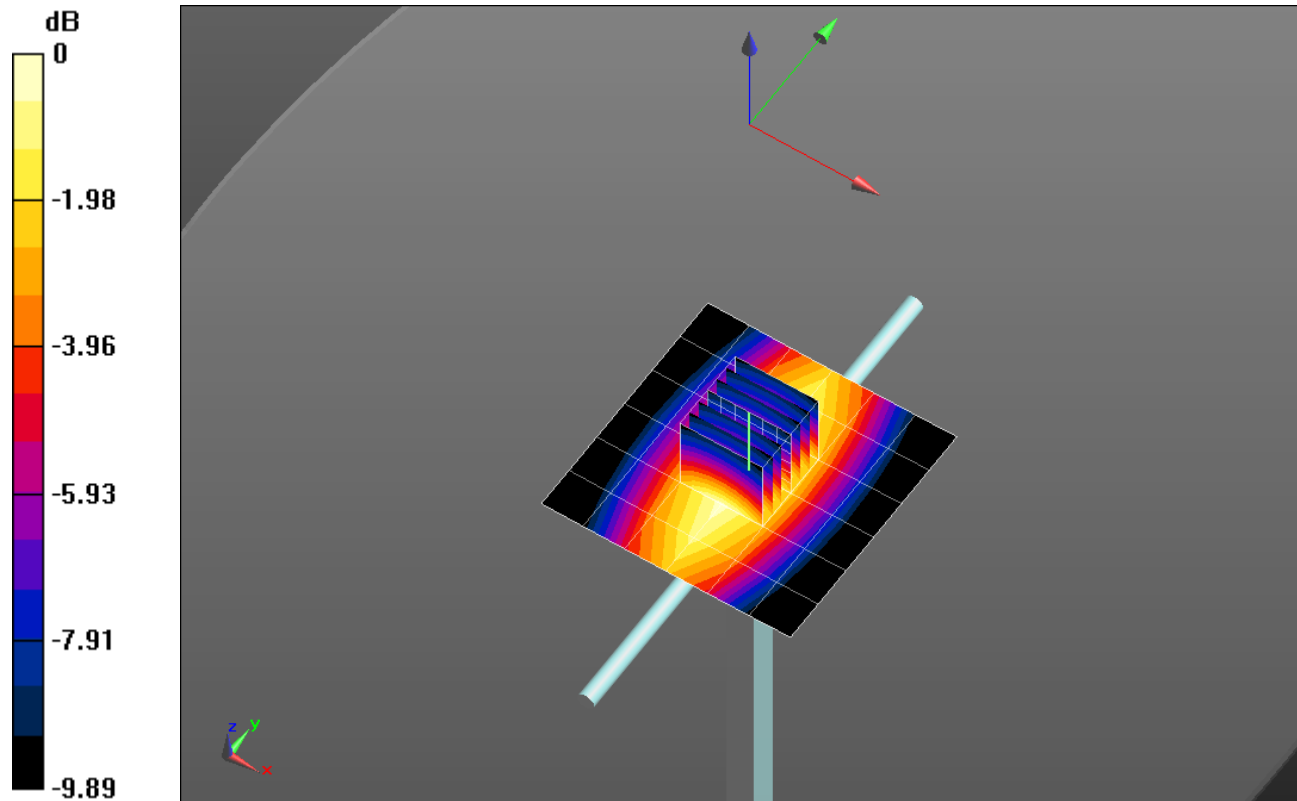
Maximum value of SAR (measured) = 1.09 W/kg

**Body/Pin=100 mW/Zoom Scan (7x7x7)/Cube 0:** Measurement grid: dx=5mm, dy=5mm, dz=5mm

Reference Value = 33.901 V/m; Power Drift = -0.03 dB

Peak SAR (extrapolated) = 1.33 W/kg

**SAR(1 g) = 0.901 W/kg; SAR(10 g) = 0.600 W/kg**

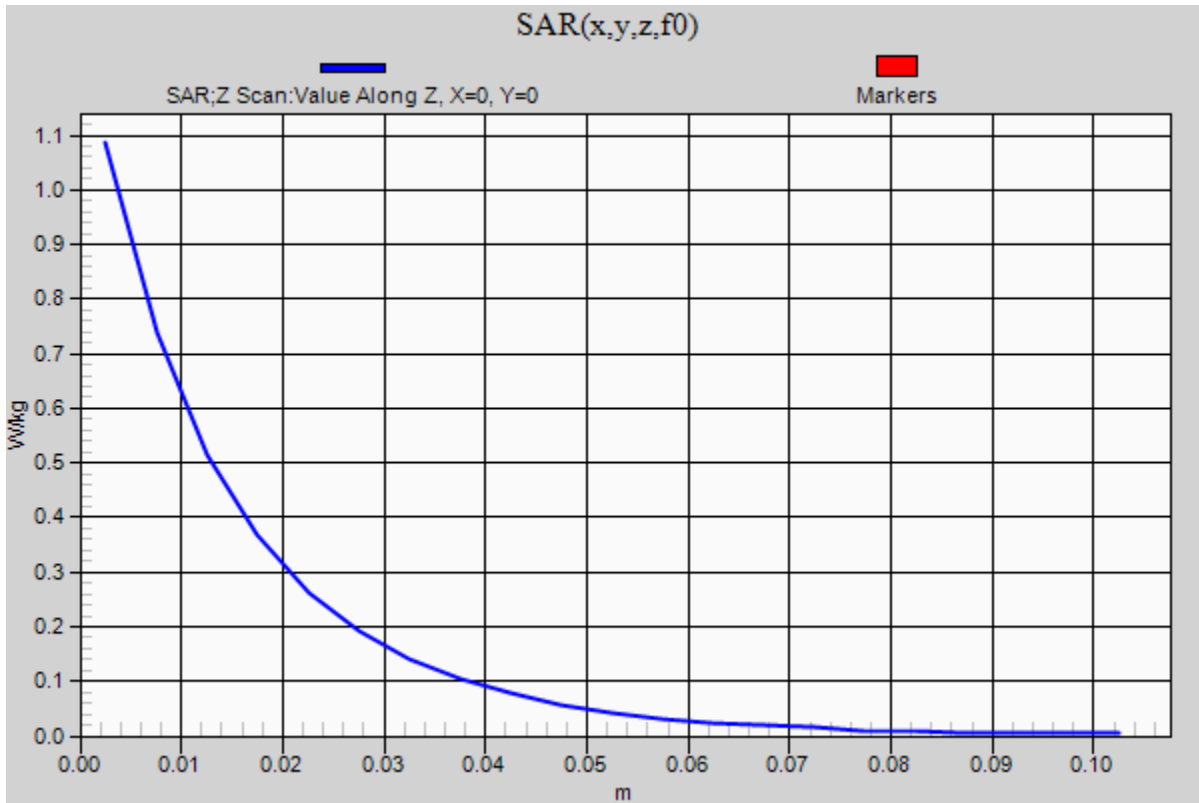


0 dB = 1.09 W/kg = 0.37 dBW/kg

### 20170711\_SystemPerformanceCheck-D750V3 SN 1024

Frequency: 750 MHz; Duty Cycle: 1:1

**Body/Pin=100 mW/Z Scan (1x1x21):** Measurement grid: dx=20mm, dy=20mm, dz=5mm  
Maximum value of SAR (measured) = 1.09 W/kg



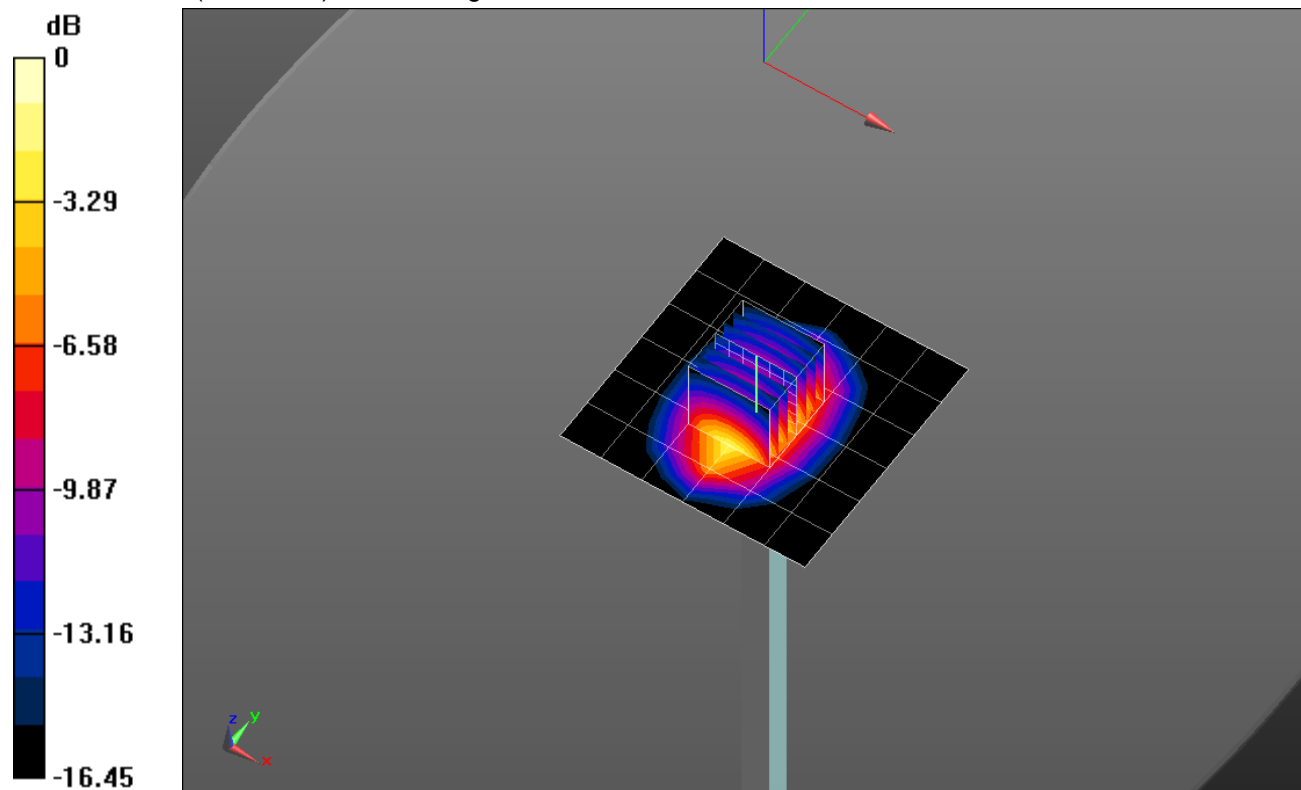
## 20170712\_SystemPerformanceCheck-D1900V2 SN 5d163

Frequency: 1900 MHz; Duty Cycle: 1:1; Room Ambient Temperature: 24.0°C; Liquid Temperature: 23.0°C  
 Medium parameters used:  $f = 1900 \text{ MHz}$ ;  $\sigma = 1.483 \text{ S/m}$ ;  $\epsilon_r = 51.756$ ;  $\rho = 1000 \text{ kg/m}^3$   
 DASY5 Configuration:

- Area Scan Setting: Find Secondary Maximum Within: 2.0 dB and with a peak SAR value greater than 0.0012W/kg
- Electronics: DAE4 Sn1259; Calibrated: 1/20/2017
- Probe: EX3DV4 - SN3751; ConvF(7.18, 7.18, 7.18); Calibrated: 11/17/2016;
- Sensor-Surface: 2.5mm (Mechanical Surface Detection)
- Phantom: ELI-A v5.0; Type: QDOVA002AA; Serial: TP:1195

**Body/Pin=100 mW/Area Scan (7x7x1):** Measurement grid: dx=15mm, dy=15mm  
 Maximum value of SAR (measured) = 5.12 W/kg

**Body/Pin=100 mW/Zoom Scan (7x7x7)/Cube 0:** Measurement grid: dx=5mm, dy=5mm, dz=5mm  
 Reference Value = 59.35 V/m; Power Drift = -0.01 dB  
 Peak SAR (extrapolated) = 7.00 W/kg  
**SAR(1 g) = 3.9 W/kg; SAR(10 g) = 2.05 W/kg**  
 Maximum value of SAR (measured) = 5.27 W/kg

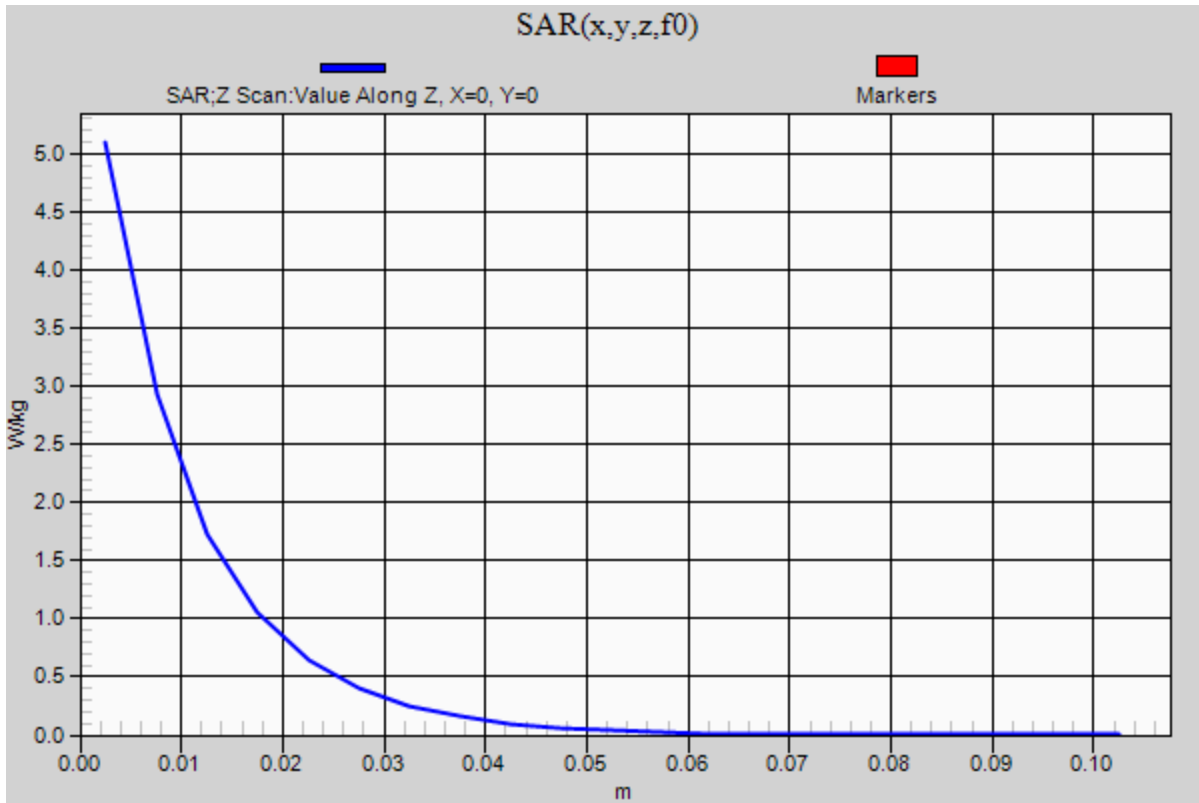


0 dB = 5.27 W/kg = 7.22 dBW/kg

### 20170712\_SystemPerformanceCheck-D1900V2 SN 5d163

Frequency: 1900 MHz; Duty Cycle: 1:1

**Body/Pin=100 mW/Z Scan (1x1x21):** Measurement grid: dx=20mm, dy=20mm, dz=5mm  
Maximum value of SAR (measured) = 5.10 W/kg



## 20170715\_SystemPerformanceCheck-D1900V2 SN 5d043

Frequency: 1900 MHz; Duty Cycle: 1:1; Room Ambient Temperature: 24.0°C; Liquid Temperature: 23.0°C  
 Medium parameters used:  $f = 1900 \text{ MHz}$ ;  $\sigma = 1.439 \text{ S/m}$ ;  $\epsilon_r = 41.335$ ;  $\rho = 1000 \text{ kg/m}^3$

DASY5 Configuration:

- Area Scan Setting: Find Secondary Maximum Within: 2.0 dB and with a peak SAR value greater than 0.0012W/kg
- Electronics: DAE4 Sn1259; Calibrated: 1/20/2017
- Probe: EX3DV4 - SN3751; ConvF(7.67, 7.67, 7.67); Calibrated: 11/17/2016;
- Sensor-Surface: 2.5mm (Mechanical Surface Detection)
- Phantom: SAM with CRP (Wi-Fi 5 GHz); Type: QD000P40CD; Serial: TP:xxxx

**Head/Pin=100 mW/Area Scan (7x7x1):** Measurement grid: dx=15mm, dy=15mm

Maximum value of SAR (measured) = 5.65 W/kg

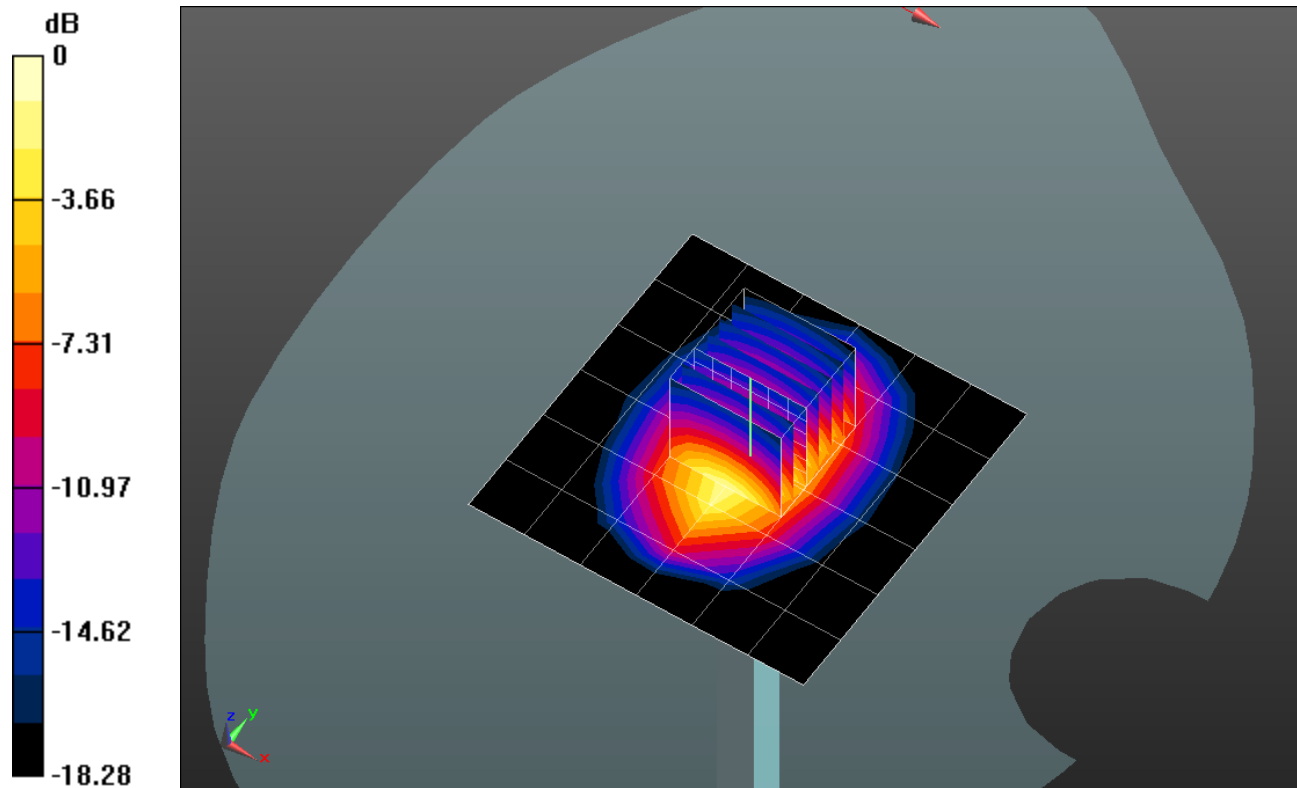
**Head/Pin=100 mW/Zoom Scan (7x7x7)/Cube 0:** Measurement grid: dx=5mm, dy=5mm, dz=5mm

Reference Value = 63.42 V/m; Power Drift = 0.01 dB

Peak SAR (extrapolated) = 8.00 W/kg

**SAR(1 g) = 4.24 W/kg; SAR(10 g) = 2.19 W/kg**

Maximum value of SAR (measured) = 5.75 W/kg

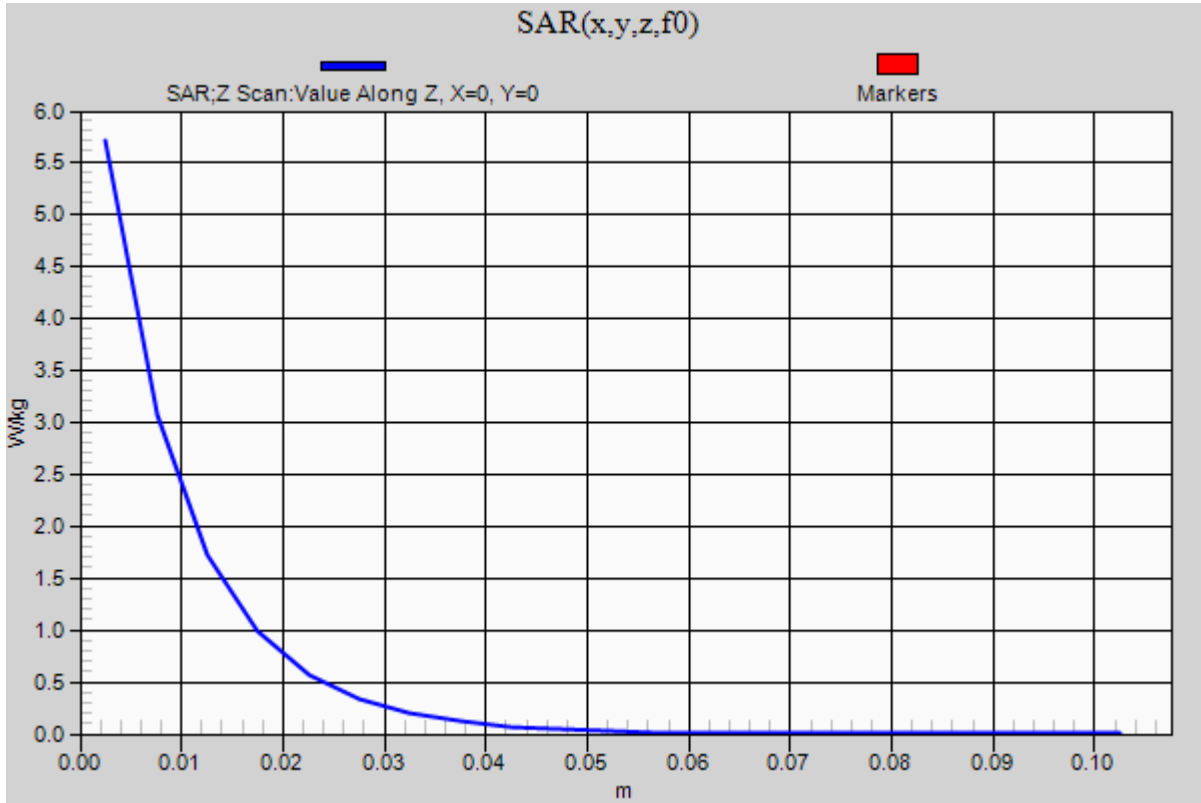


0 dB = 5.75 W/kg = 7.60 dBW/kg

### 20170715\_SystemPerformanceCheck-D1900V2 SN 5d043

Frequency: 1900 MHz; Duty Cycle: 1:1

**Head/Pin=100 mW/Z Scan (1x1x21):** Measurement grid: dx=20mm, dy=20mm, dz=5mm  
Maximum value of SAR (measured) = 5.70 W/kg



## 20170717\_SystemPerformanceCheck-D2600V2 SN 1036

Frequency: 2600 MHz; Duty Cycle: 1:1; Room Ambient Temperature: 24.0°C; Liquid Temperature: 23.0°C

Medium parameters used:  $f = 2600 \text{ MHz}$ ;  $\sigma = 2.232 \text{ S/m}$ ;  $\epsilon_r = 51.151$ ;  $\rho = 1000 \text{ kg/m}^3$

DASY5 Configuration:

- Area Scan Setting: Find Secondary Maximum Within: 2.0 dB and with a peak SAR value greater than 0.0012W/kg
- Electronics: DAE4 Sn1433; Calibrated: 3/8/2017
- Probe: EX3DV4 - SN3991; ConvF(7.62, 7.62, 7.62); Calibrated: 5/30/2017;
- Sensor-Surface: 2.5mm (Mechanical Surface Detection)
- Phantom: ELI B v4.0; Type: QDOVA002AA; Serial: 1196

**Body/Pin=100 mW/Area Scan (8x8x1):** Measurement grid: dx=12mm, dy=12mm

Maximum value of SAR (measured) = 7.78 W/kg

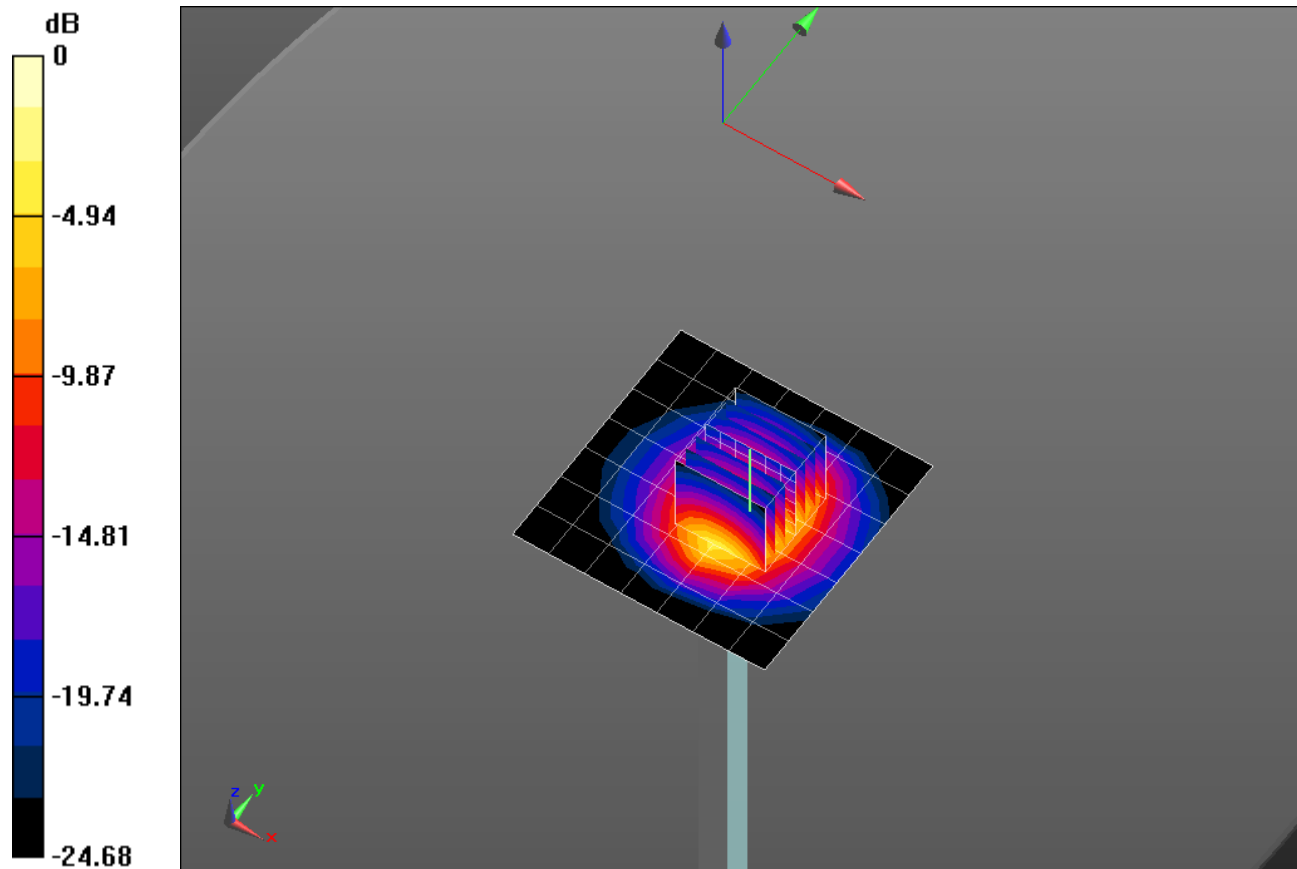
**Body/Pin=100 mW/Zoom Scan (7x7x7)/Cube 0:** Measurement grid: dx=5mm, dy=5mm, dz=5mm

Reference Value = 46.538 V/m; Power Drift = -0.20 dB

Peak SAR (extrapolated) = 13.0 W/kg

**SAR(1 g) = 5.95 W/kg; SAR(10 g) = 2.59 W/kg**

Maximum value of SAR (measured) = 8.72 W/kg

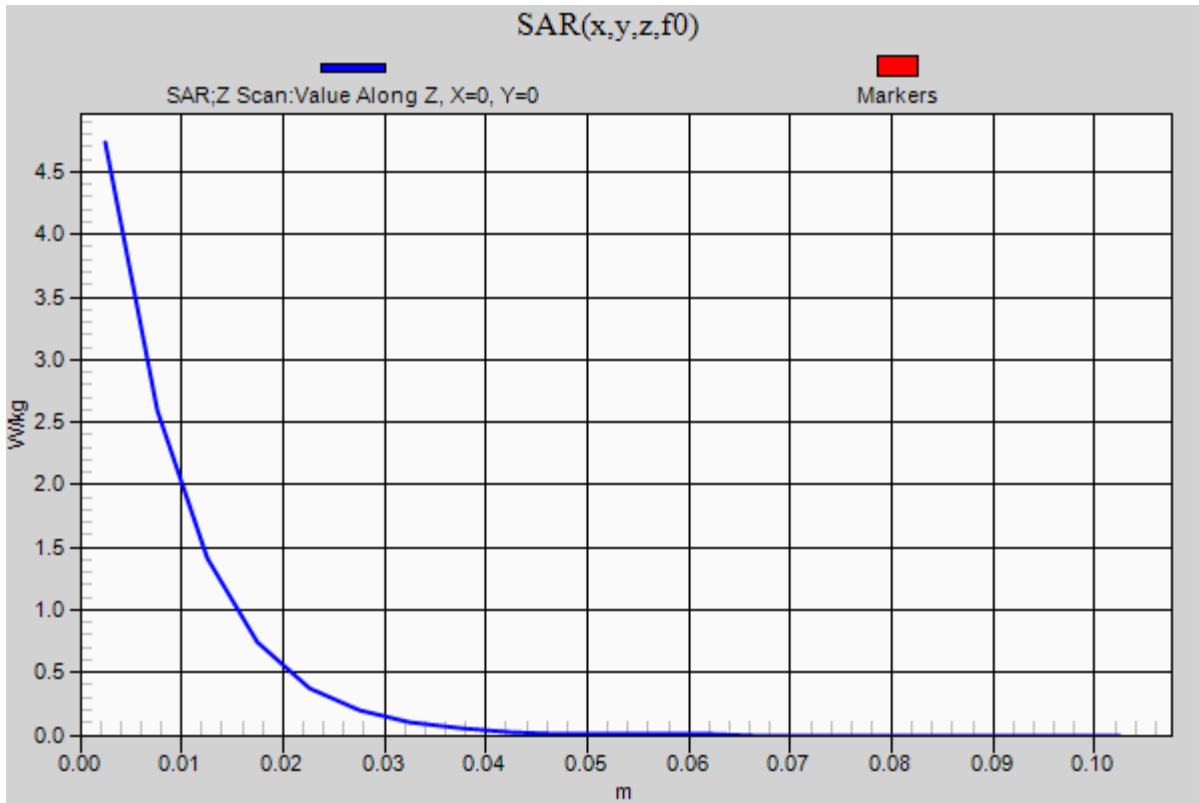


0 dB = 8.72 W/kg = 9.41 dBW/kg

### 20170717\_SystemPerformanceCheck-D2600V2 SN 1036

Frequency: 2600 MHz; Duty Cycle: 1:1

**Body/Pin=100 mW/Z Scan (1x1x21):** Measurement grid: dx=20mm, dy=20mm, dz=5mm  
Maximum value of SAR (measured) = 4.73 W/kg





## 20170712\_SystemPerformanceCheck-D750V3 SN 1024

Frequency: 750 MHz; Duty Cycle: 1:1; Room Ambient Temperature: 24.0°C; Liquid Temperature: 23.0°C

Medium parameters used:  $f = 750$  MHz;  $\sigma = 0.834$  S/m;  $\epsilon_r = 43.048$ ;  $\rho = 1000$  kg/m<sup>3</sup>

DASY5 Configuration:

- Area Scan Setting: Find Secondary Maximum Within: 2.0 dB and with a peak SAR value greater than 0.0012W/kg
- Electronics: DAE4 Sn1343; Calibrated: 8/15/2016
- Probe: EX3DV4 - SN3871; ConvF(10.41, 10.41, 10.41); Calibrated: 8/25/2016;
- Sensor-Surface: 2.5mm (Mechanical Surface Detection)
- Phantom: SAM v5.0 ; Type: QD000P40CD; Serial: 1742

**Head/Pin=100 mW/Area Scan (7x7x1):** Measurement grid: dx=15mm, dy=15mm

Maximum value of SAR (measured) = 0.925 W/kg

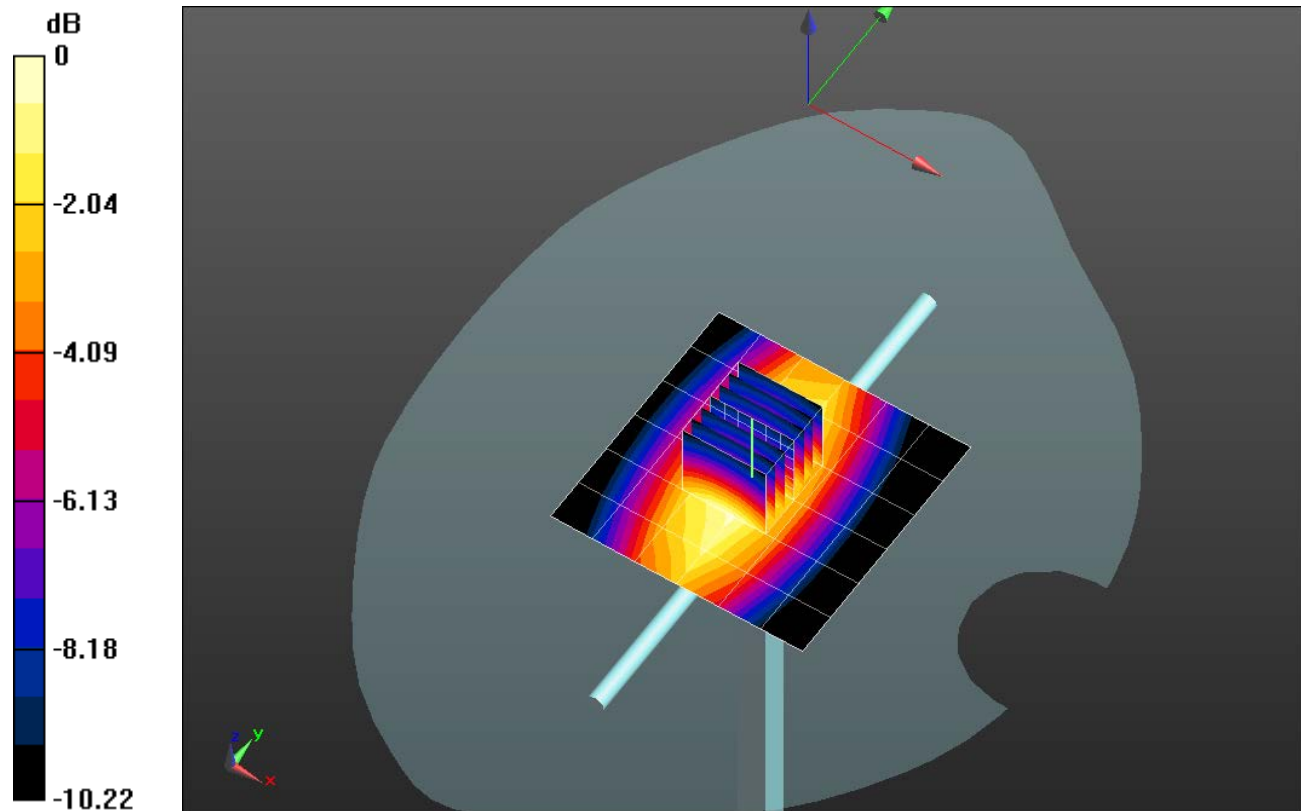
**Head/Pin=100 mW/Zoom Scan (7x7x7)/Cube 0:** Measurement grid: dx=5mm, dy=5mm, dz=5mm

Reference Value = 34.003 V/m; Power Drift = -0.01 dB

Peak SAR (extrapolated) = 1.17 W/kg

**SAR(1 g) = 0.792 W/kg; SAR(10 g) = 0.525 W/kg**

Maximum value of SAR (measured) = 0.960 W/kg

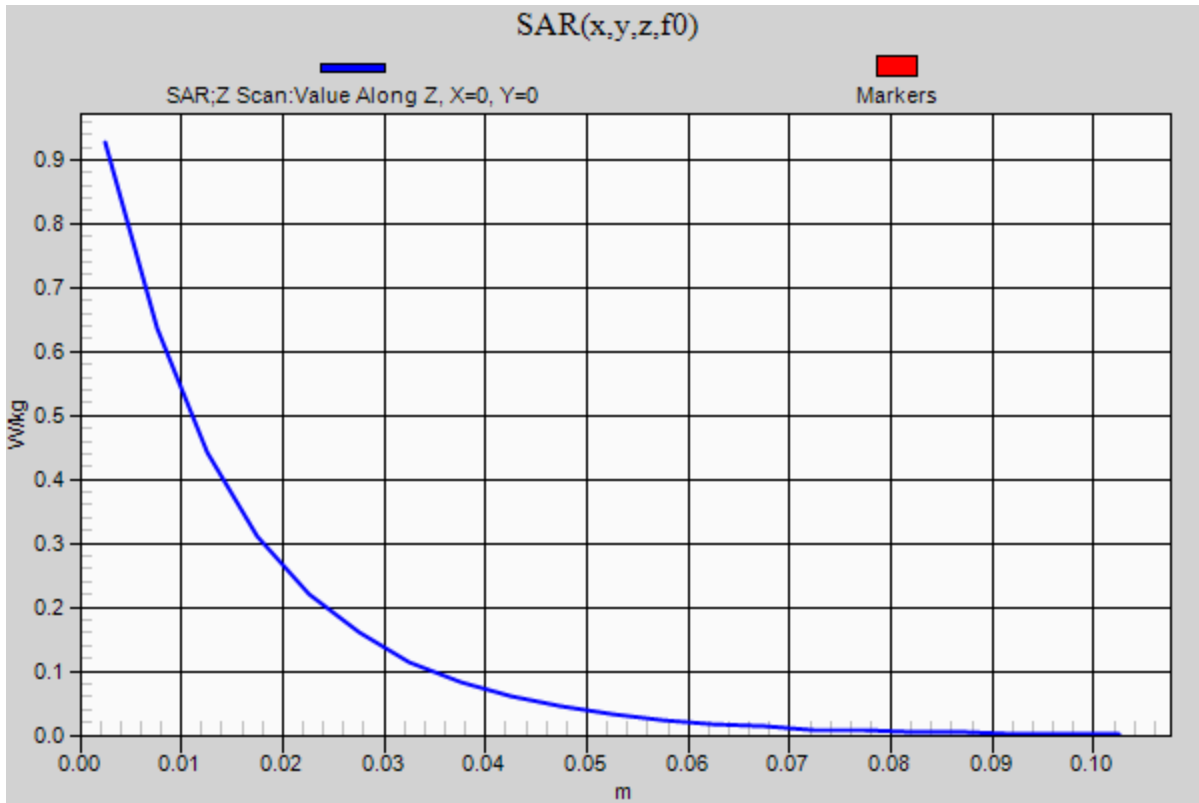


0 dB = 0.960 W/kg = -0.18 dBW/kg

### 20170712\_SystemPerformanceCheck-D750V3 SN 1024

Frequency: 750 MHz; Duty Cycle: 1:1

**Head/Pin=100 mW/Z Scan (1x1x21):** Measurement grid: dx=20mm, dy=20mm, dz=5mm  
Maximum value of SAR (measured) = 0.927 W/kg



## 20170718\_SystemPerformanceCheck-D1750V2 SN 1053

Frequency: 1750 MHz; Duty Cycle: 1:1; Room Ambient Temperature: 24.0°C; Liquid Temperature: 23.0°C

Medium parameters used:  $f = 1750$  MHz;  $\sigma = 1.386$  S/m;  $\epsilon_r = 41.786$ ;  $\rho = 1000$  kg/m<sup>3</sup>

DASY5 Configuration:

- Area Scan Setting: Find Secondary Maximum Within: 2.0 dB and with a peak SAR value greater than 0.0012W/kg
- Electronics: DAE4 Sn1343; Calibrated: 8/15/2016
- Probe: EX3DV4 - SN3871; ConvF(8.84, 8.84, 8.84); Calibrated: 8/25/2016;
- Sensor-Surface: 2.5mm (Mechanical Surface Detection)
- Phantom: SAM v5.0 ; Type: QD000P40CD; Serial: 1742

**Head/Pin=100 mW/Area Scan (7x7x1):** Measurement grid: dx=15mm, dy=15mm

Maximum value of SAR (measured) = 4.38 W/kg

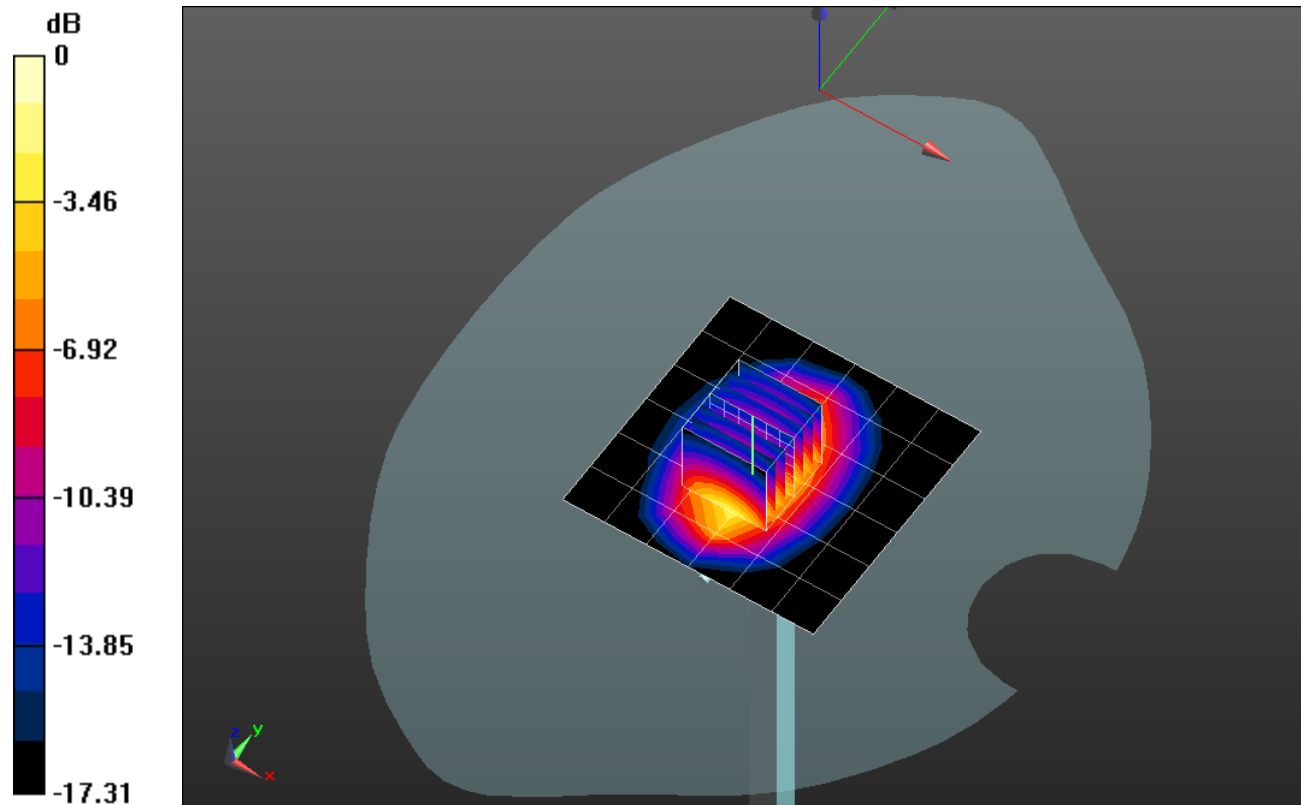
**Head/Pin=100 mW/Zoom Scan (7x7x7)/Cube 0:** Measurement grid: dx=5mm, dy=5mm, dz=5mm

Reference Value = 57.137 V/m; Power Drift = 0.08 dB

Peak SAR (extrapolated) = 6.53 W/kg

**SAR(1 g) = 3.54 W/kg; SAR(10 g) = 1.87 W/kg**

Maximum value of SAR (measured) = 4.77 W/kg

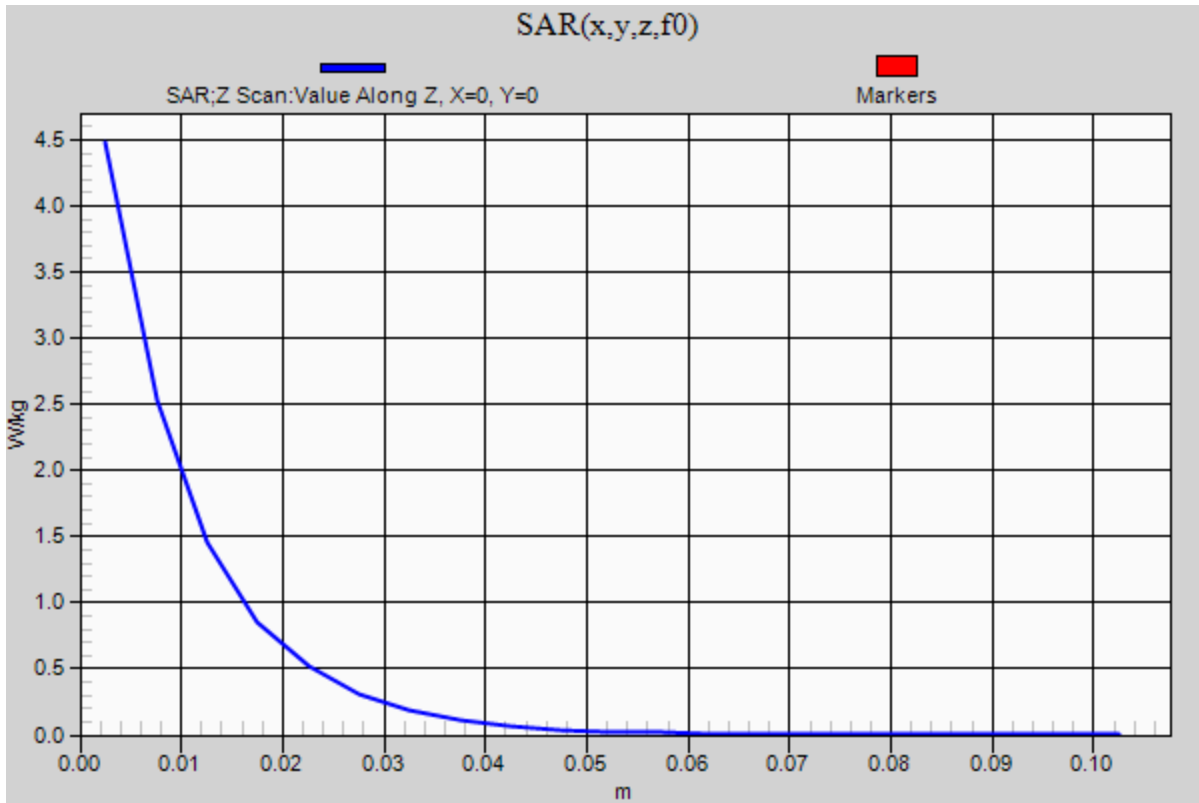


0 dB = 4.77 W/kg = 6.79 dBW/kg

### 20170718\_SystemPerformanceCheck-D1750V2 SN 1053

Frequency: 1750 MHz; Duty Cycle: 1:1

**Head/Pin=100 mW/Z Scan (1x1x21):** Measurement grid: dx=20mm, dy=20mm, dz=5mm  
Maximum value of SAR (measured) = 4.48 W/kg



## 20170720\_SystemPerformanceCheck-D1900V2 SN 5d163

Frequency: 1900 MHz; Duty Cycle: 1:1; Room Ambient Temperature: 25.0°C; Liquid Temperature: 24.0°C

Medium parameters used:  $f = 1900$  MHz;  $\sigma = 1.578$  S/m;  $\epsilon_r = 55.468$ ;  $\rho = 1000$  kg/m<sup>3</sup>

DASY5 Configuration:

- Area Scan Setting: Find Secondary Maximum Within: 2.0 dB and with a peak SAR value greater than 0.0012W/kg
- Electronics: DAE4 Sn1343; Calibrated: 8/15/2016
- Probe: EX3DV4 - SN3871; ConvF(8.06, 8.06, 8.06); Calibrated: 8/25/2016;
- Sensor-Surface: 2.5mm (Mechanical Surface Detection)
- Phantom: ELI A v5.0; Type: QD OVA 002 AA; Serial: 1194

**Body/Pin=100 mW/Area Scan (7x7x1):** Measurement grid: dx=15mm, dy=15mm

Maximum value of SAR (measured) = 5.31 W/kg

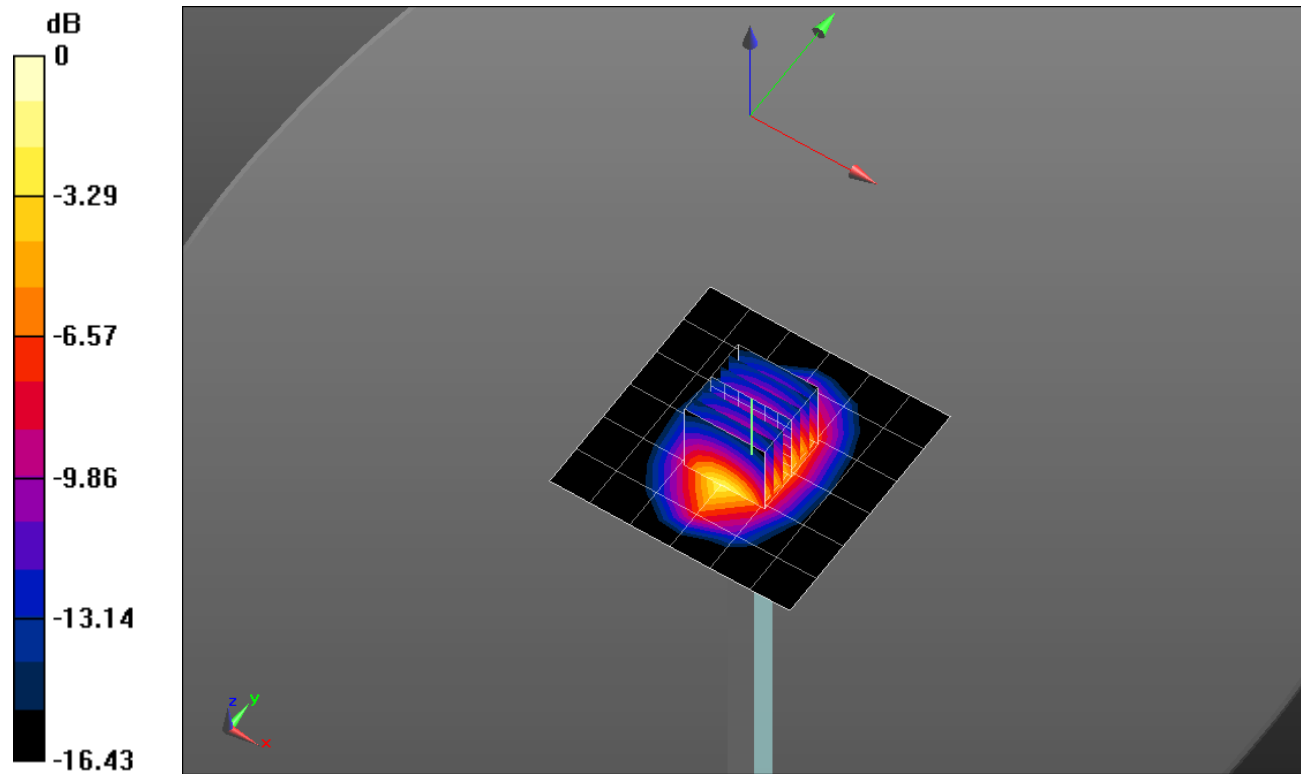
**Body/Pin=100 mW/Zoom Scan (7x7x7)/Cube 0:** Measurement grid: dx=5mm, dy=5mm, dz=5mm

Reference Value = 58.707 V/m; Power Drift = -0.10 dB

Peak SAR (extrapolated) = 7.30 W/kg

**SAR(1 g) = 4.09 W/kg; SAR(10 g) = 2.16 W/kg**

Maximum value of SAR (measured) = 5.49 W/kg

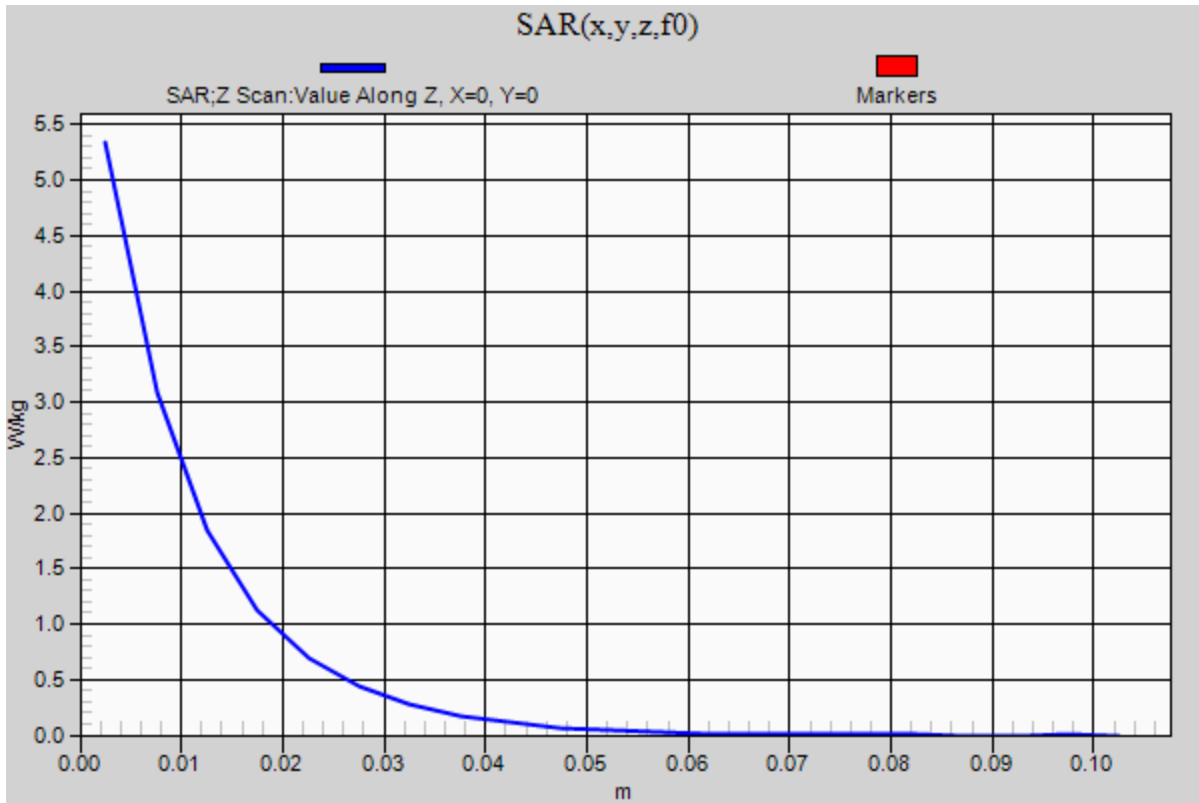


0 dB = 5.49 W/kg = 7.40 dBW/kg

### 20170720\_SystemPerformanceCheck-D1900V2 SN 5d163

Frequency: 1900 MHz; Duty Cycle: 1:1

**Body/Pin=100 mW/Z Scan (1x1x21):** Measurement grid: dx=20mm, dy=20mm, dz=5mm  
Maximum value of SAR (measured) = 5.34 W/kg



## 20170725\_SystemPerformanceCheck-D5GHzV2 SN 1138

Frequency: 5800 MHz; Duty Cycle: 1:1; Room Ambient Temperature: 24.0°C; Liquid Temperature: 23.0°C

Medium parameters used:  $f = 5800 \text{ MHz}$ ;  $\sigma = 5.223 \text{ S/m}$ ;  $\epsilon_r = 34.483$ ;  $\rho = 1000 \text{ kg/m}^3$

DASY5 Configuration:

- Area Scan Setting: Find Secondary Maximum Within: 2.0 dB and with a peak SAR value greater than 0.0012W/kg
- Electronics: DAE4 Sn1343; Calibrated: 8/15/2016
- Probe: EX3DV4 - SN3871; ConvF(4.92, 4.92, 4.92); Calibrated: 8/25/2016;
- Sensor-Surface: 1.4mm (Mechanical Surface Detection)
- Phantom: SAM v5.0 ; Type: QD000P40CD; Serial: 1742

**Head/5.8 GHz, Pin=100mW/Area Scan (7x7x1):** Measurement grid: dx=10mm, dy=10mm

Maximum value of SAR (measured) = 16.1 W/kg

**Head/5.8 GHz, Pin=100mW/Zoom Scan (8x8x7)/Cube 0:** Measurement grid: dx=4mm, dy=4mm,

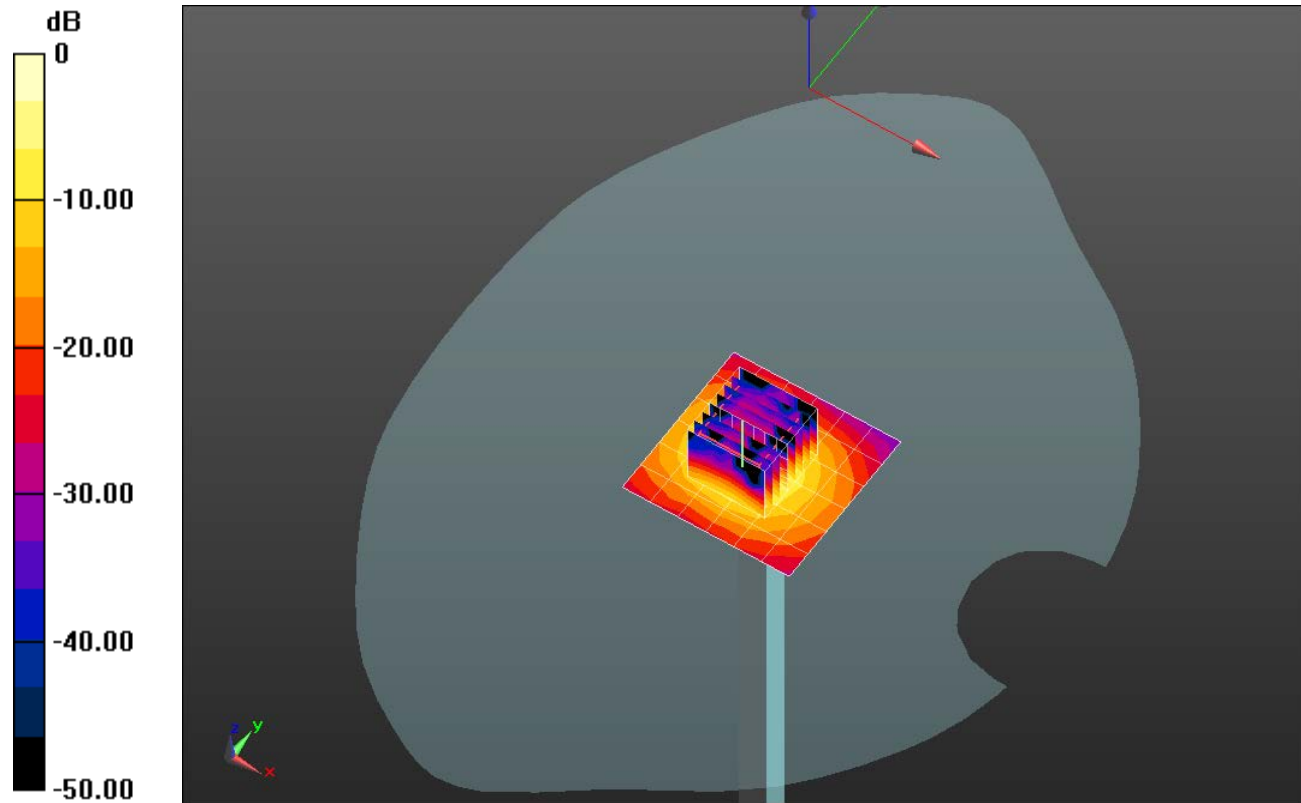
dz=1.4mm

Reference Value = 49.783 V/m; Power Drift = 0.10 dB

Peak SAR (extrapolated) = 29.5 W/kg

**SAR(1 g) = 7.28 W/kg; SAR(10 g) = 2.1 W/kg**

Maximum value of SAR (measured) = 17.7 W/kg

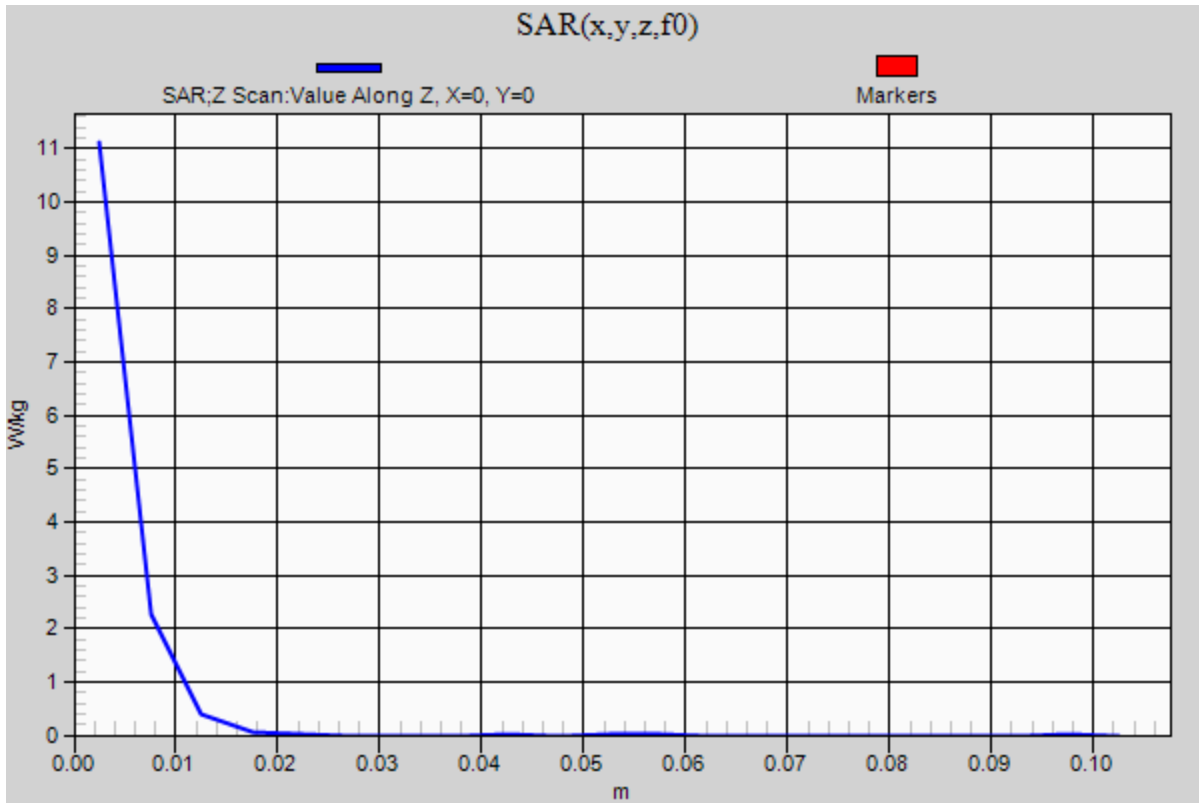


0 dB = 17.7 W/kg = 12.48 dBW/kg

### 20170725\_SystemPerformanceCheck-D5GHzV2 SN 1138

Frequency: 5800 MHz; Duty Cycle: 1:1

**Head/5.8 GHz, Pin=100mW/Z Scan (1x1x21):** Measurement grid: dx=20mm, dy=20mm, dz=5mm  
Maximum value of SAR (measured) = 11.1 W/kg





## 20170711\_SystemPerformanceCheck-D835V2 SN 4d142

Frequency: 835 MHz; Duty Cycle: 1:1; Room Ambient Temperature: 24.0°C; Liquid Temperature: 23.0°C

Medium parameters used:  $f = 835 \text{ MHz}$ ;  $\sigma = 0.99 \text{ S/m}$ ;  $\epsilon_r = 53.185$ ;  $\rho = 1000 \text{ kg/m}^3$

DASY5 Configuration:

- Area Scan Setting: Find Secondary Maximum Within: 2.0 dB and with a peak SAR value greater than 0.0012W/kg
- Electronics: DAE4 Sn1380; Calibrated: 7/25/2016
- Probe: EX3DV4 - SN3990; ConvF(10.22, 10.22, 10.22); Calibrated: 3/15/2017;
- Sensor-Surface: 2.5mm (Mechanical Surface Detection)
- Phantom: ELI v5.0 B; Type: QDOVA002AA; Serial: 1248

**Body/Pin=100 mW/Area Scan (7x7x1):** Measurement grid: dx=15mm, dy=15mm

Maximum value of SAR (measured) = 1.19 W/kg

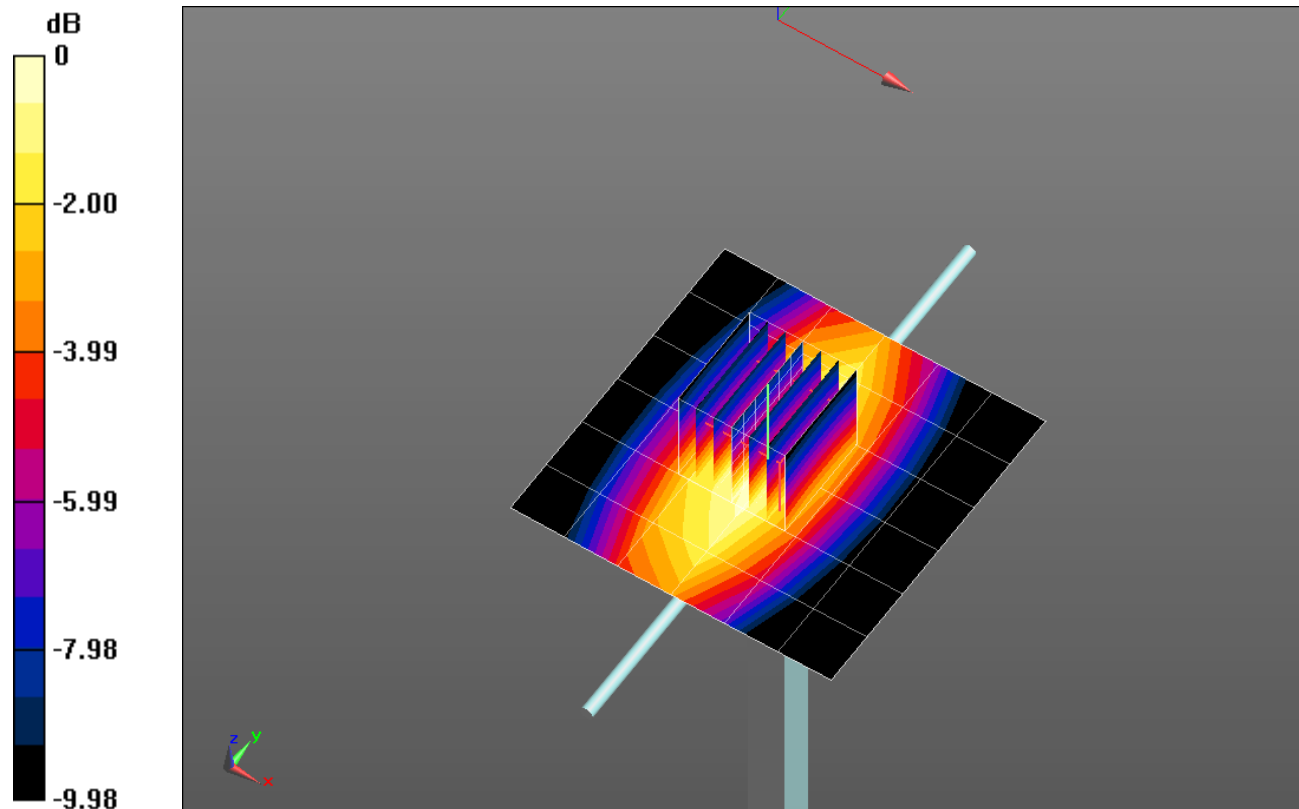
**Body/Pin=100 mW/Zoom Scan (7x7x7)/Cube 0:** Measurement grid: dx=5mm, dy=5mm, dz=5mm

Reference Value = 35.231 V/m; Power Drift = 0.03 dB

Peak SAR (extrapolated) = 1.50 W/kg

**SAR(1 g) = 1.02 W/kg; SAR(10 g) = 0.678 W/kg**

Maximum value of SAR (measured) = 1.23 W/kg

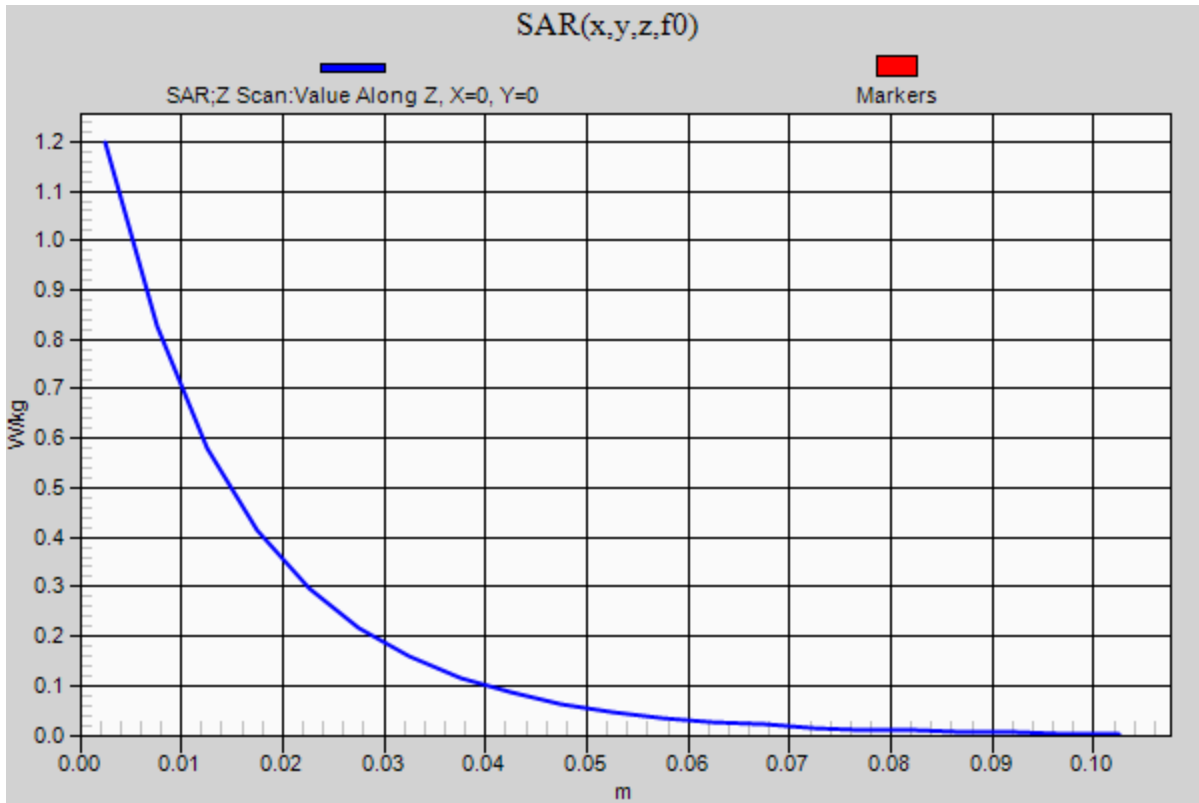


0 dB = 1.23 W/kg = 0.90 dBW/kg

### 20170711\_SystemPerformanceCheck-D835V2 SN 4d142

Frequency: 835 MHz; Duty Cycle: 1:1

**Body/Pin=100 mW/Z Scan (1x1x21):** Measurement grid: dx=20mm, dy=20mm, dz=5mm  
Maximum value of SAR (measured) = 1.20 W/kg



## 20170725\_SystemPerformanceCheck-D2450V2 SN 899

Frequency: 2450 MHz; Duty Cycle: 1:1; Room Ambient Temperature: 24.0°C; Liquid Temperature: 23.0°C

Medium parameters used:  $f = 2450$  MHz;  $\sigma = 2.036$  S/m;  $\epsilon_r = 54.558$ ;  $\rho = 1000$  kg/m<sup>3</sup>

DASY5 Configuration:

- Area Scan Setting: Find Secondary Maximum Within: 2.0 dB and with a peak SAR value greater than 0.0012W/kg
- Electronics: DAE4 Sn1258; Calibrated: 5/12/2017
- Probe: EX3DV4 - SN3990; ConvF(7.96, 7.96, 7.96); Calibrated: 3/15/2017;
- Sensor-Surface: 2.5mm (Mechanical Surface Detection)
- Phantom: ELI v5.0 B; Type: QDOVA002AA; Serial: 1248

**Body/Pin=100 mW/Area Scan (8x8x1):** Measurement grid: dx=12mm, dy=12mm

Maximum value of SAR (measured) = 6.39 W/kg

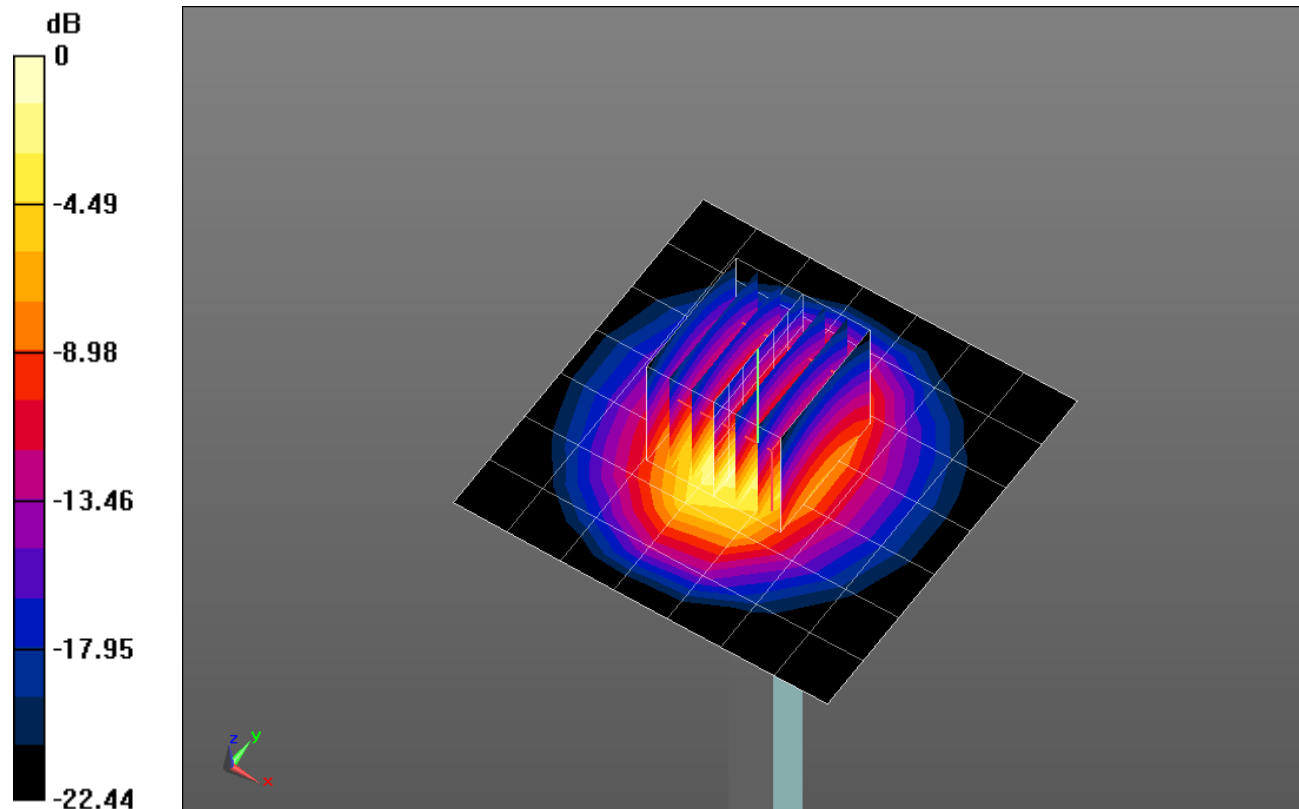
**Body/Pin=100 mW/Zoom Scan (7x7x7)/Cube 0:** Measurement grid: dx=5mm, dy=5mm, dz=5mm

Reference Value = 60.550 V/m; Power Drift = 0.08 dB

Peak SAR (extrapolated) = 11.2 W/kg

**SAR(1 g) = 5.42 W/kg; SAR(10 g) = 2.51 W/kg**

Maximum value of SAR (measured) = 7.72 W/kg



0 dB = 7.72 W/kg = 8.88 dBW/kg

### 20170725\_SystemPerformanceCheck-D2450V2 SN 899

Frequency: 2450 MHz; Duty Cycle: 1:1

**Body/Pin=100 mW/Z Scan (1x1x21):** Measurement grid: dx=20mm, dy=20mm, dz=5mm  
Maximum value of SAR (measured) = 7.35 W/kg

