

Appendix A: SAR Test Plots

RF SAFETY LABORATORY

DUT: PY7-27433F; SN: 053LD

Test Conditions

Exposure Condition	Position, Test Distance [mm]	Band	Signal, UID	Ant.	Channel Number	Frequency [MHz]	ConvF (x,y,z)
Head	Left Head, CHEEK, 0.00	GSM 850	GSM-FDD (TDMA, GMSK), 10021	Main1	Ch. 190	836.600	9.24

Test Setup

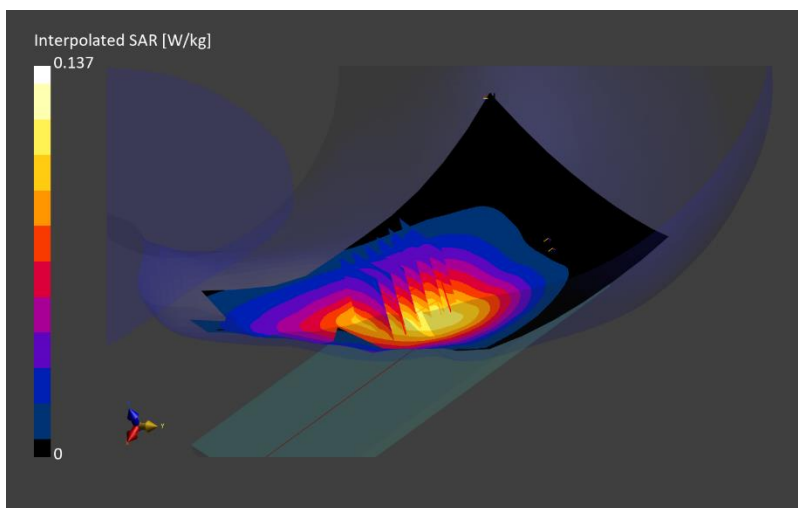
Test Date	Ambient Temp [°C]	TSL Temp [°C]	Measurement SW	Phantom	Type	Cond. [S/m]	TSL Perm.	Probe, Cal. Date	DAE, Cal. Date
2024-02-19	22.9	21.5	16.2.4.2524	Twinn-SAM V8.0 - 2165	HSL	0.929	42.4	EX3DV4 - SN7859, 2023-12-19	DAE4ip Sn1844, 2023-11-02

Scans Setup

	Area Scan	Zoom Scan
Grid Extents [mm]	120.0 x 210.0	30.0 x 30.0 x 30.0
Grid Steps [mm]	15.0 x 15.0	6.0 x 6.0 x 1.5
Sensor Surface [mm]	3.0	1.4
Grading Ratio	N/A	1.5
MAIA	Y	Y

Measurement Results

psSAR1g [W/Kg]	0.108
Power Drift [dB]	-0.01
Peak SAR (Extrapolated) [W/kg]	0.137
M2/M1 [%]	93.3
Dist 3dB Peak [mm]	> 15.0



RF SAFETY LABORATORY

DUT: PY7-27433F; SN: 053LD

Test Conditions

Exposure Condition	Position, Test Distance [mm]	Band	Signal, UID	Ant.	Channel Number	Frequency [MHz]	ConvF (x,y,z)
Body-worn	Flat, BACK, 10.00	GSM 850	GSM-FDD (TDMA, GMSK), 10021	Main1	Ch. 190	836.600	9.24

Test Setup

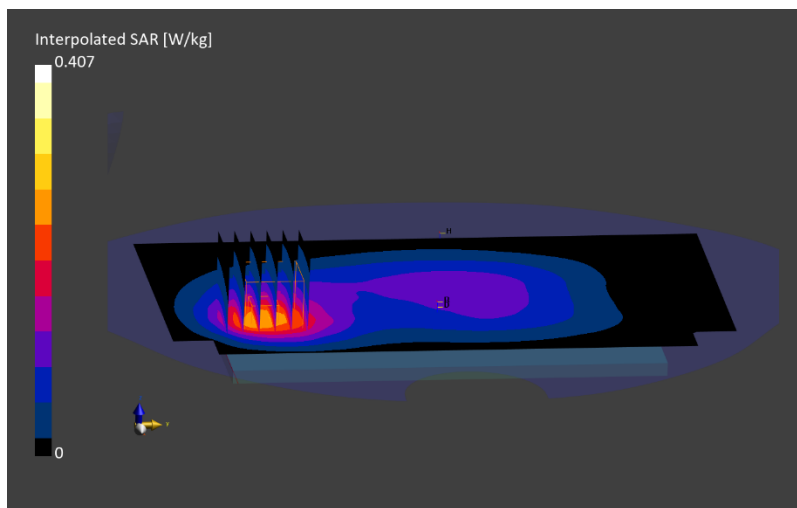
Test Date	Ambient Temp [°C]	TSL Temp [°C]	Measurement SW	Phantom	Type	Cond. [S/m]	TSL Perm.	Probe, Cal. Date	DAE, Cal. Date
2024-02-21	23.5	21.5	16.2.4.2524	Twin-SAM V8.0 - 2165	HSL	0.942	41.9	EX3DV4 - SN7859, 2023-12-19	DAE4ip Sn1844, 2023-11-02

Scans Setup

	Area Scan	Zoom Scan
Grid Extents [mm]	120.0 x 210.0	30.0 x 30.0 x 30.0
Grid Steps [mm]	15.0 x 15.0	6.0 x 6.0 x 1.5
Sensor Surface [mm]	3.0	1.4
Grading Ratio	N/A	1.5
MAIA	Y	Y

Measurement Results

psSAR1g [W/Kg]	0.239
Power Drift [dB]	-0.02
Peak SAR (Extrapolated) [W/kg]	0.407
M2/M1 [%]	82.7
Dist 3dB Peak [mm]	16.7



RF SAFETY LABORATORY

DUT: PY7-27433F; SN: 053LD

Test Conditions

Exposure Condition	Position, Test Distance [mm]	Band	Signal, UID	Ant.	Channel Number	Frequency [MHz]	ConvF (x,y,z)
Hotspot	Flat, BACK, 10.00	GSM 850	GPRS-FDD (TDMA, GMSK, TN 0-1-2-3), 10028	Main1	Ch. 190	836.600	9.24

Test Setup

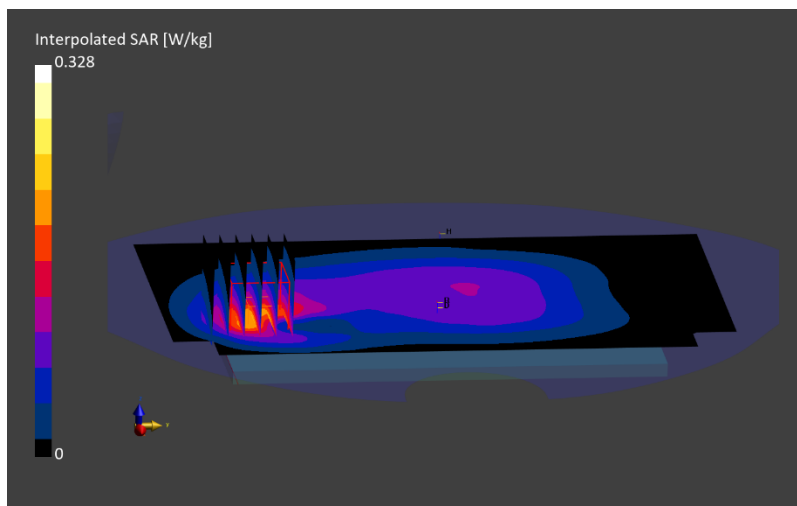
Test Date	Ambient Temp [°C]	TSL Temp [°C]	Measurement SW	Phantom	Type	Cond. [S/m]	TSL Perm.	Probe, Cal. Date	DAE, Cal. Date
2024-02-21	23.5	21.5	16.2.4.2524	Twin-SAM V8.0 - 2165	HSL	0.942	41.9	EX3DV4 - SN7859, 2023-12-19	DAE4ip Sn1844, 2023-11-02

Scans Setup

	Area Scan	Zoom Scan
Grid Extents [mm]	120.0 x 210.0	30.0 x 30.0 x 30.0
Grid Steps [mm]	15.0 x 15.0	6.0 x 6.0 x 1.5
Sensor Surface [mm]	3.0	1.4
Grading Ratio	N/A	1.5
MAIA	Y	Y

Measurement Results

psSAR1g [W/Kg]	0.194
Power Drift [dB]	0.02
Peak SAR (Extrapolated) [W/kg]	0.328
M2/M1 [%]	83.1
Dist 3dB Peak [mm]	17.2



RF SAFETY LABORATORY

DUT: PY7-27433F; SN: 053LD

Test Conditions

Exposure Condition	Position, Test Distance [mm]	Band	Signal, UID	Ant.	Channel Number	Frequency [MHz]	ConvF (x,y,z)
Head	Right Head, CHEEK, 0.00	GSM 1900	GSM-FDD (TDMA, GMSK), 10021	Main2	Ch. 810	1909.800	8.26

Test Setup

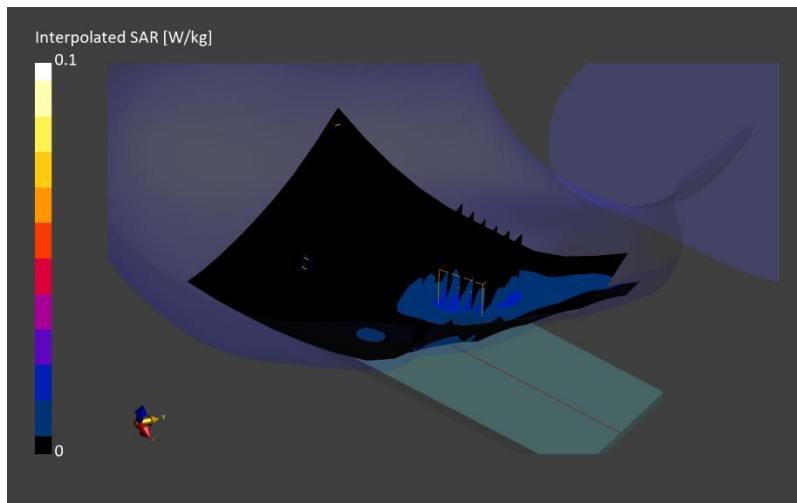
Test Date	Ambient Temp [°C]	TSL Temp [°C]	Measurement SW	Phantom	Type	Cond. [S/m]	TSL Perm.	Probe, Cal. Date	DAE, Cal. Date
2024-02-19	22.7	22.2	16.2.4.2524	Twin-SAM V8.0 - 2159	HSL	1.46	38.8	EX3DV4 - SN7836, 2023-10-11	DAE4ip Sn1839, 2023-10-09

Scans Setup

	Area Scan	Zoom Scan
Grid Extents [mm]	120.0 x 210.0	30.0 x 30.0 x 30.0
Grid Steps [mm]	15.0 x 15.0	6.0 x 6.0 x 1.5
Sensor Surface [mm]	3.0	1.4
Grading Ratio	N/A	1.5
MAIA	Y	Y

Measurement Results

psSAR1g [W/Kg]	0.02
Power Drift [dB]	0.04
Peak SAR (Extrapolated) [W/kg]	0.030
M2/M1 [%]	93.5
Dist 3dB Peak [mm]	10.3



RF SAFETY LABORATORY

DUT: PY7-27433F; SN: 053LD

Test Conditions

Exposure Condition	Position, Test Distance [mm]	Band	Signal, UID	Ant.	Channel Number	Frequency [MHz]	ConvF (x,y,z)
Body-worn	Flat, BACK, 10.00	GSM 1900	GSM-FDD (TDMA, GMSK), 10021	Main2	Ch. 810	1909.800	8.26

Test Setup

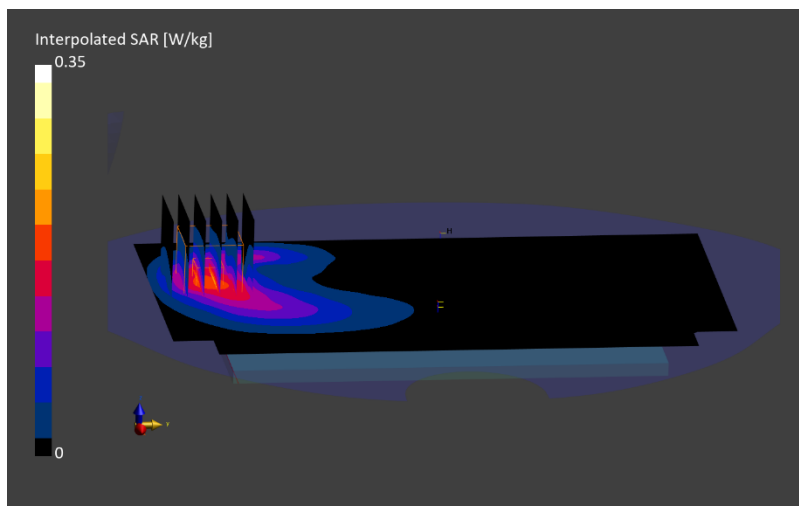
Test Date	Ambient Temp [°C]	TSL Temp [°C]	Measurement SW	Phantom	Type	Cond. [S/m]	TSL Perm.	Probe, Cal. Date	DAE, Cal. Date
2024-02-19	22.7	22.2	16.2.4.2524	Twin-SAM V8.0 - 2159	HSL	1.46	38.8	EX3DV4 - SN7836, 2023-10-11	DAE4ip Sn1839, 2023-10-09

Scans Setup

	Area Scan	Zoom Scan
Grid Extents [mm]	120.0 x 210.0	30.0 x 30.0 x 30.0
Grid Steps [mm]	15.0 x 15.0	6.0 x 6.0 x 1.5
Sensor Surface [mm]	3.0	1.4
Grading Ratio	N/A	1.5
MAIA	Y	Y

Measurement Results

psSAR1g [W/Kg]	0.192
Power Drift [dB]	-0.07
Peak SAR (Extrapolated) [W/kg]	0.350
M2/M1 [%]	82.3
Dist 3dB Peak [mm]	9.7



RF SAFETY LABORATORY

DUT: PY7-27433F; SN: 053LD

Test Conditions

Exposure Condition	Position, Test Distance [mm]	Band	Signal, UID	Ant.	Channel Number	Frequency [MHz]	ConvF (x,y,z)
Hotspot	Flat, EDGE BOTTOM, 10.00	GSM 1900	GPRS-FDD (TDMA, GMSK, TN 0-1-2), 10027	Main2	Ch. 810	1909.800	8.26

Test Setup

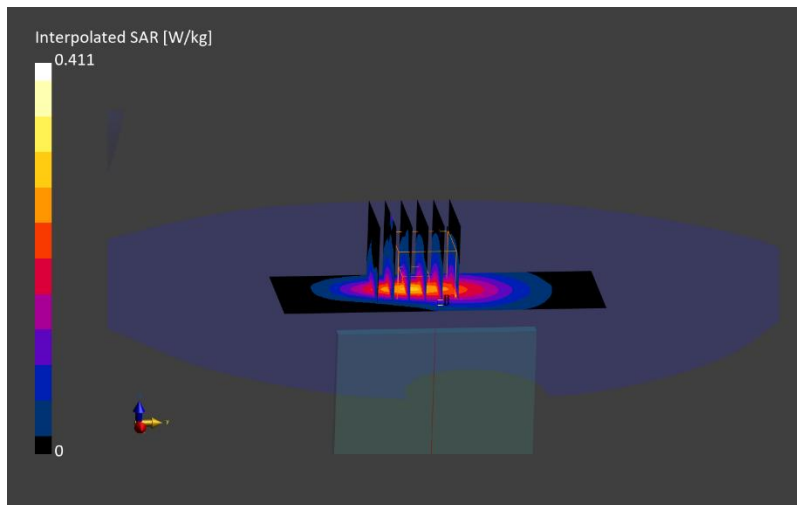
Test Date	Ambient Temp [°C]	TSL Temp [°C]	Measurement SW	Phantom	Type	Cond. [S/m]	TSL Perm.	Probe, Cal. Date	DAE, Cal. Date
2024-02-19	22.7	22.2	16.2.4.2524	Twin-SAM V8.0 - 2159	HSL	1.46	38.8	EX3DV4 - SN7836, 2023-10-11	DAE4ip Sn1839, 2023-10-09

Scans Setup

	Area Scan	Zoom Scan
Grid Extents [mm]	40.0 x 120.0	30.0 x 30.0 x 30.0
Grid Steps [mm]	5.0 x 15.0	6.0 x 6.0 x 1.5
Sensor Surface [mm]	3.0	1.4
Grading Ratio	N/A	1.5
MAIA	Y	Y

Measurement Results

psSAR1g [W/Kg]	0.224
Power Drift [dB]	0
Peak SAR (Extrapolated) [W/kg]	0.411
M2/M1 [%]	81.8
Dist 3dB Peak [mm]	10.8



RF SAFETY LABORATORY

DUT: PY7-27433F; SN: 053LD

Test Conditions

Exposure Condition	Position, Test Distance [mm]	Band	Signal, UID	Ant.	Channel Number	Frequency [MHz]	ConvF (x,y,z)
Head	Left Head, CHEEK, 0.00	Band 5	UMTS-FDD (WCDMA), 10011	Main1	Ch. 4132	826.400	9.24

Test Setup

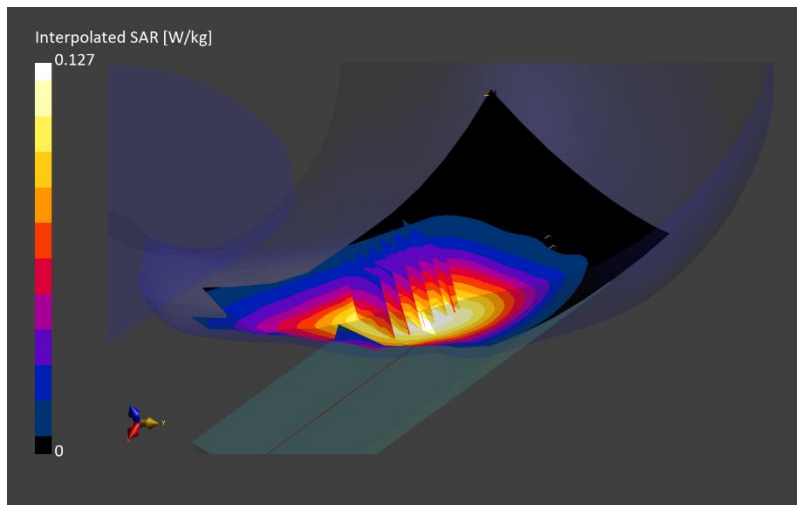
Test Date	Ambient Temp [°C]	TSL Temp [°C]	Measurement SW	Phantom	Type	Cond. [S/m]	TSL Perm.	Probe, Cal. Date	DAE, Cal. Date
2024-02-21	23.5	21.5	16.2.4.2524	Twin-SAM V8.0 - 2165	HSL	0.939	41.9	EX3DV4 - SN7859, 2023-12-19	DAE4ip Sn1844, 2023-11-02

Scans Setup

	Area Scan	Zoom Scan
Grid Extents [mm]	120.0 x 210.0	30.0 x 30.0 x 30.0
Grid Steps [mm]	15.0 x 15.0	6.0 x 6.0 x 1.5
Sensor Surface [mm]	3.0	1.4
Grading Ratio	N/A	1.5
MAIA	Y	Y

Measurement Results

psSAR1g [W/Kg]	0.101
Power Drift [dB]	0.05
Peak SAR (Extrapolated) [W/kg]	0.127
M2/M1 [%]	94.2
Dist 3dB Peak [mm]	> 15.0



RF SAFETY LABORATORY

DUT: PY7-27433F; SN: 053LD

Test Conditions

Exposure Condition	Position, Test Distance [mm]	Band	Signal, UID	Ant.	Channel Number	Frequency [MHz]	ConvF (x,y,z)
Body-worn/Hotspot	Flat, BACK, 10.00	Band 5	UMTS-FDD (WCDMA), 10011	Main1	Ch. 4132	826.400	9.24

Test Setup

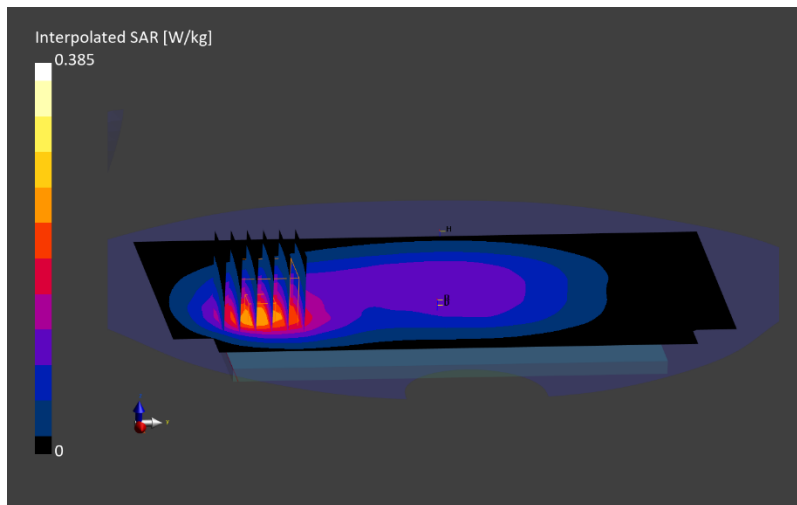
Test Date	Ambient Temp [°C]	TSL Temp [°C]	Measurement SW	Phantom	Type	Cond. [S/m]	TSL Perm.	Probe, Cal. Date	DAE, Cal. Date
2024-02-21	23.5	21.5	16.2.4.2524	Twinn-SAM V8.0 - 2165	HSL	0.939	41.9	EX3DV4 - SN7859, 2023-12-19	DAE4ip Sn1844, 2023-11-02

Scans Setup

	Area Scan	Zoom Scan
Grid Extents [mm]	120.0 x 210.0	30.0 x 30.0 x 30.0
Grid Steps [mm]	15.0 x 15.0	6.0 x 6.0 x 1.5
Sensor Surface [mm]	3.0	1.4
Grading Ratio	N/A	1.5
MAIA	Y	Y

Measurement Results

psSAR1g [W/Kg]	0.222
Power Drift [dB]	-0.02
Peak SAR (Extrapolated) [W/kg]	0.385
M2/M1 [%]	82.3
Dist 3dB Peak [mm]	15.7



RF SAFETY LABORATORY

DUT: PY7-27433F; SN: 0DMLD

Test Conditions

Exposure Condition	Position, Test Distance [mm]	Band	Signal, UID	Ant.	Channel Number	Frequency [MHz]	ConvF (x,y,z)
Head	Right Head, CHEEK, 0.00	Band 4	UMTS-FDD (WCDMA), 10011	Main2	Ch. 1513	1752.600	8.36

Test Setup

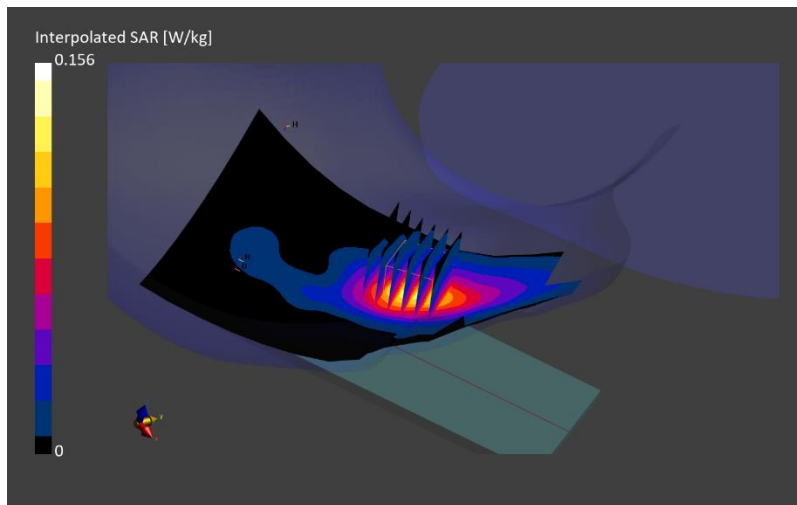
Test Date	Ambient Temp [°C]	TSL Temp [°C]	Measurement SW	Phantom	Type	Cond. [S/m]	TSL Perm.	Probe, Cal. Date	DAE, Cal. Date
2024-02-19	22.7	22.2	16.2.4.2524	Twin-SAM V8.0 - 2159	HSL	1.37	39.1	EX3DV4 - SN7836, 2023-10-11	DAE4ip Sn1839, 2023-10-09

Scans Setup

	Area Scan	Zoom Scan
Grid Extents [mm]	120.0 x 210.0	30.0 x 30.0 x 30.0
Grid Steps [mm]	15.0 x 15.0	6.0 x 6.0 x 1.5
Sensor Surface [mm]	3.0	1.4
Grading Ratio	N/A	1.5
MAIA	Y	Y

Measurement Results

psSAR1g [W/Kg]	0.105
Power Drift [dB]	-0.04
Peak SAR (Extrapolated) [W/kg]	0.156
M2/M1 [%]	90.2
Dist 3dB Peak [mm]	11.7



RF SAFETY LABORATORY

DUT: PY7-27433F; SN: 0DMLD

Test Conditions

Exposure Condition	Position, Test Distance [mm]	Band	Signal, UID	Ant.	Channel Number	Frequency [MHz]	ConvF (x,y,z)
Body-worn	Flat, BACK, 10.00	Band 4	UMTS-FDD (WCDMA), 10011	Main2	Ch. 1513	1752.600	8.36

Test Setup

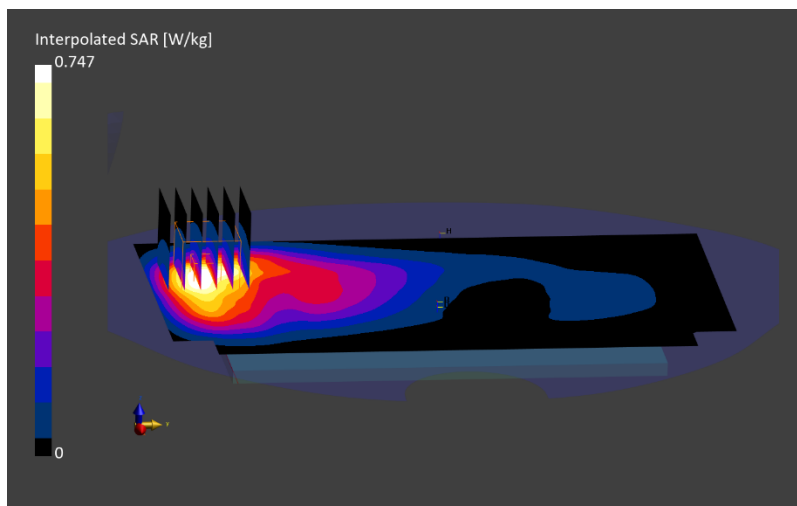
Test Date	Ambient Temp [°C]	TSL Temp [°C]	Measurement SW	Phantom	Type	Cond. [S/m]	TSL Perm.	Probe, Cal. Date	DAE, Cal. Date
2024-02-19	22.7	22.2	16.2.4.2524	Twin-SAM V8.0 - 2159	HSL	1.37	39.1	EX3DV4 - SN7836, 2023-10-11	DAE4ip Sn1839, 2023-10-09

Scans Setup

	Area Scan	Zoom Scan
Grid Extents [mm]	120.0 x 210.0	30.0 x 30.0 x 30.0
Grid Steps [mm]	15.0 x 15.0	6.0 x 6.0 x 1.5
Sensor Surface [mm]	3.0	1.4
Grading Ratio	N/A	1.5
MAIA	Y	Y

Measurement Results

psSAR1g [W/Kg]	0.352
Power Drift [dB]	0.01
Peak SAR (Extrapolated) [W/kg]	0.747
M2/M1 [%]	81.4
Dist 3dB Peak [mm]	11.9



RF SAFETY LABORATORY

DUT: PY7-27433F; SN: 0DMLD

Test Conditions

Exposure Condition	Position, Test Distance [mm]	Band	Signal, UID	Ant.	Channel Number	Frequency [MHz]	ConvF (x,y,z)
Hotspot	Flat, EDGE BOTTOM, 10.00	Band 4	UMTS-FDD (WCDMA), 10011	Main2	Ch. 1513	1752.600	8.36

Test Setup

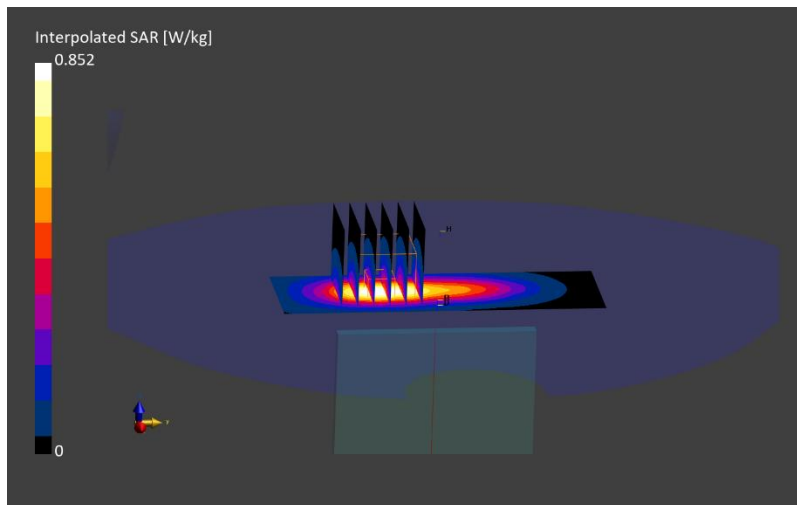
Test Date	Ambient Temp [°C]	TSL Temp [°C]	Measurement SW	Phantom	Type	Cond. [S/m]	TSL Perm.	Probe, Cal. Date	DAE, Cal. Date
2024-02-19	22.7	22.2	16.2.4.2524	Twin-SAM V8.0 - 2159	HSL	1.37	39.1	EX3DV4 - SN7836, 2023-10-11	DAE4ip Sn1839, 2023-10-09

Scans Setup

	Area Scan	Zoom Scan
Grid Extents [mm]	40.0 x 120.0	30.0 x 30.0 x 30.0
Grid Steps [mm]	5.0 x 15.0	6.0 x 6.0 x 1.5
Sensor Surface [mm]	3.0	1.4
Grading Ratio	N/A	1.5
MAIA	Y	Y

Measurement Results

psSAR1g [W/Kg]	0.391
Power Drift [dB]	-0.01
Peak SAR (Extrapolated) [W/kg]	0.852
M2/M1 [%]	81.4
Dist 3dB Peak [mm]	10.9



RF SAFETY LABORATORY

DUT: PY7-27433F; SN: 0DMLD

Test Conditions

Exposure Condition	Position, Test Distance [mm]	Band	Signal, UID	Ant.	Channel Number	Frequency [MHz]	ConvF (x,y,z)
Head	Right Head, CHEEK, 0.00	Band 2	UMTS-FDD (WCDMA), 10011	Main2	Ch. 9538	1907.600	8.26

Test Setup

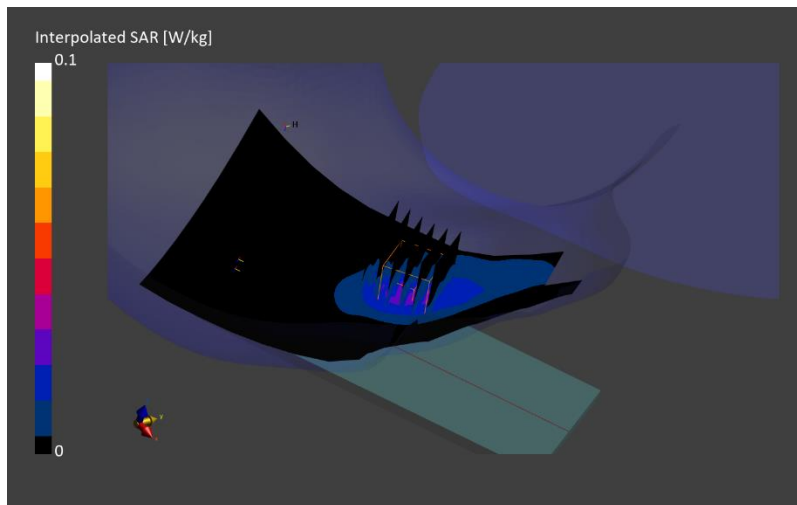
Test Date	Ambient Temp [°C]	TSL Temp [°C]	Measurement SW	Phantom	Type	Cond. [S/m]	TSL Perm.	Probe, Cal. Date	DAE, Cal. Date
2024-02-19	22.7	22.2	16.2.4.2524	Twin-SAM V8.0 - 2159	HSL	1.46	38.8	EX3DV4 - SN7836, 2023-10-11	DAE4ip Sn1839, 2023-10-09

Scans Setup

	Area Scan	Zoom Scan
Grid Extents [mm]	120.0 x 210.0	30.0 x 30.0 x 30.0
Grid Steps [mm]	15.0 x 15.0	6.0 x 6.0 x 1.5
Sensor Surface [mm]	3.0	1.4
Grading Ratio	N/A	1.5
MAIA	Y	Y

Measurement Results

psSAR1g [W/Kg]	0.027
Power Drift [dB]	0.21
Peak SAR (Extrapolated) [W/kg]	0.042
M2/M1 [%]	91.2
Dist 3dB Peak [mm]	9.5



RF SAFETY LABORATORY

DUT: PY7-27433F; SN: 0DMLD

Test Conditions

Exposure Condition	Position, Test Distance [mm]	Band	Signal, UID	Ant.	Channel Number	Frequency [MHz]	ConvF (x,y,z)
Body-worn/Hotspot	Flat, BACK, 10.00	Band 2	UMTS-FDD (WCDMA), 10011	Main2	Ch. 9538	1907.600	8.26

Test Setup

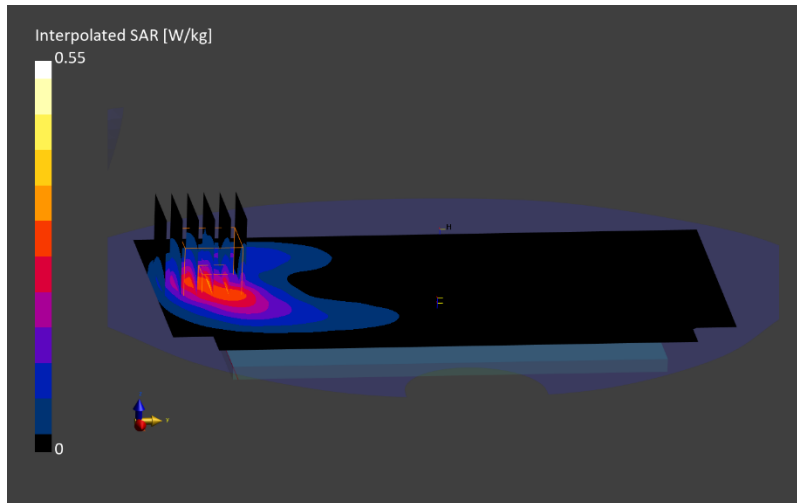
Test Date	Ambient Temp [°C]	TSL Temp [°C]	Measurement SW	Phantom	Type	Cond. [S/m]	TSL Perm.	Probe, Cal. Date	DAE, Cal. Date
2024-02-19	22.7	22.2	16.2.4.2524	Twin-SAM V8.0 - 2159	HSL	1.46	38.8	EX3DV4 - SN7836, 2023-10-11	DAE4ip Sn1839, 2023-10-09

Scans Setup

	Area Scan	Zoom Scan
Grid Extents [mm]	120.0 x 210.0	30.0 x 30.0 x 30.0
Grid Steps [mm]	15.0 x 15.0	6.0 x 6.0 x 1.5
Sensor Surface [mm]	3.0	1.4
Grading Ratio	N/A	1.5
MAIA	Y	Y

Measurement Results

psSAR1g [W/Kg]	0.266
Power Drift [dB]	-0.02
Peak SAR (Extrapolated) [W/kg]	0.550
M2/M1 [%]	82.1
Dist 3dB Peak [mm]	10.4



RF SAFETY LABORATORY

DUT: PY7-27433F; SN: 0KQLD

Test Conditions

Exposure Condition	Position, Test Distance [mm]	Band	Signal, UID	Ant.	Channel Number	Frequency [MHz]	ConvF (x,y,z)
Head	Left Head, CHEEK, 0.00	Band 12	LTE-FDD (SC-FDMA, 1 RB, 10 MHz, QPSK) RBPosition:Mid AntennaCfg:SISO, 10175	Main1	Ch. 23095	707.500	9.57

Test Setup

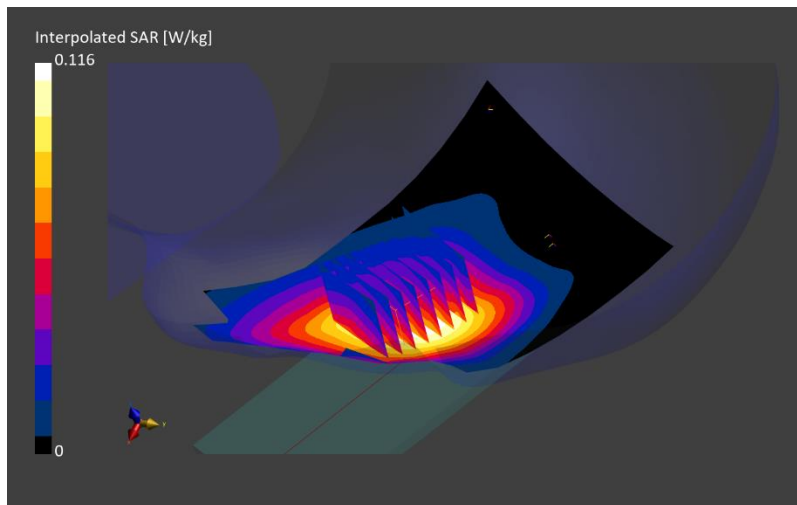
Test Date	Ambient Temp [°C]	TSL Temp [°C]	Measurement SW	Phantom	Type	Cond. [S/m]	TSL Perm.	Probe, Cal. Date	DAE, Cal. Date
2024-02-19	22.9	21.5	16.2.4.2524	Twin-SAM V8.0 - 2165	HSL	0.883	42.8	EX3DV4 - SN7859, 2023-12-19	DAE4ip Sn1844, 2023-11-02

Scans Setup

	Area Scan	Zoom Scan
Grid Extents [mm]	120.0 x 210.0	30.0 x 30.0 x 30.0
Grid Steps [mm]	15.0 x 15.0	6.0 x 6.0 x 1.5
Sensor Surface [mm]	3.0	1.4
Grading Ratio	N/A	1.5
MAIA	Y	Y

Measurement Results

psSAR1g [W/Kg]	0.087
Power Drift [dB]	0.02
Peak SAR (Extrapolated) [W/kg]	0.105
M2/M1 [%]	94.8
Dist 3dB Peak [mm]	28.4



RF SAFETY LABORATORY

DUT: PY7-27433F; SN: 0KQLD

Test Conditions

Exposure Condition	Position, Test Distance [mm]	Band	Signal, UID	Ant.	Channel Number	Frequency [MHz]	ConvF (x,y,z)
Body-worn	Flat, BACK, 10.00	Band 12	LTE-FDD (SC-FDMA, 1 RB, 10 MHz, QPSK) RBPosition:Mid AntennaCfg:SISO, 10175	Main1	Ch. 23095	707.500	9.57

Test Setup

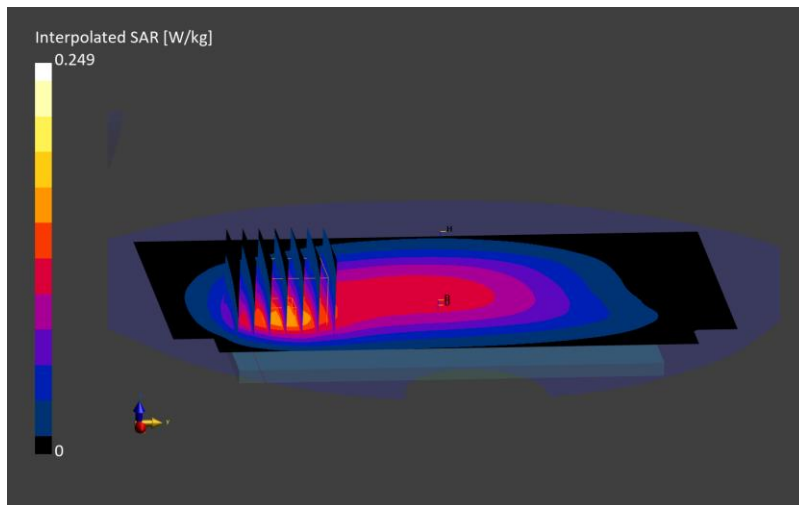
Test Date	Ambient Temp [°C]	TSL Temp [°C]	Measurement SW	Phantom	Type	Cond. [S/m]	TSL Perm.	Probe, Cal. Date	DAE, Cal. Date
2024-02-19	22.9	21.5	16.2.4.2524	Twinn-SAM V8.0 - 2165	HSL	0.883	42.8	EX3DV4 - SN7859, 2023-12-19	DAE4ip Sn1844, 2023-11-02

Scans Setup

	Area Scan	Zoom Scan
Grid Extents [mm]	120.0 x 210.0	30.0 x 30.0 x 30.0
Grid Steps [mm]	15.0 x 15.0	6.0 x 6.0 x 1.5
Sensor Surface [mm]	3.0	1.4
Grading Ratio	N/A	1.5
MAIA	Y	Y

Measurement Results

psSAR1g [W/Kg]	0.143
Power Drift [dB]	0
Peak SAR (Extrapolated) [W/kg]	0.249
M2/M1 [%]	79.5
Dist 3dB Peak [mm]	14.5



RF SAFETY LABORATORY

DUT: PY7-27433F; SN: 0KQLD

Test Conditions

Exposure Condition	Position, Test Distance [mm]	Band	Signal, UID	Ant.	Channel Number	Frequency [MHz]	ConvF (x,y,z)
Hotspot	Flat, EDGE LEFT, 10.00	Band 12	LTE-FDD (SC-FDMA, 1 RB, 10 MHz, QPSK) RBPosition:Mid AntennaCfg:SISO, 10175	Main1	Ch. 23095	707.500	9.57

Test Setup

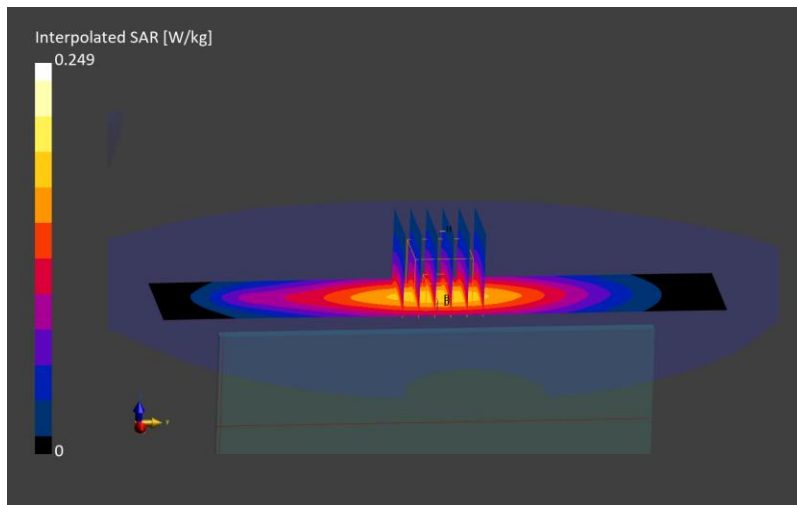
Test Date	Ambient Temp [°C]	TSL Temp [°C]	Measurement SW	Phantom	Type	Cond. [S/m]	TSL Perm.	Probe, Cal. Date	DAE, Cal. Date
2024-02-19	22.9	21.5	16.2.4.2524	Twin-SAM V8.0 - 2165	HSL	0.883	42.8	EX3DV4 - SN7859, 2023-12-19	DAE4ip Sn1844, 2023-11-02

Scans Setup

	Area Scan	Zoom Scan
Grid Extents [mm]	40.0 x 210.0	30.0 x 30.0 x 30.0
Grid Steps [mm]	5.0 x 15.0	6.0 x 6.0 x 1.5
Sensor Surface [mm]	3.0	1.4
Grading Ratio	N/A	1.5
MAIA	Y	Y

Measurement Results

psSAR1g [W/Kg]	0.161
Power Drift [dB]	0.01
Peak SAR (Extrapolated) [W/kg]	0.249
M2/M1 [%]	84.7
Dist 3dB Peak [mm]	> 15.0



RF SAFETY LABORATORY

DUT: PY7-27433F; SN: 0KQLD

Test Conditions

Exposure Condition	Position, Test Distance [mm]	Band	Signal, UID	Ant.	Channel Number	Frequency [MHz]	ConvF (x,y,z)
Head	Left Head, CHEEK, 0.00	Band 13	LTE-FDD (SC-FDMA, 1 RB, 10 MHz, QPSK) RBPosition:High AntennaCfg:SISO, 10175	Main1	Ch. 23230	782.000	9.57

Test Setup

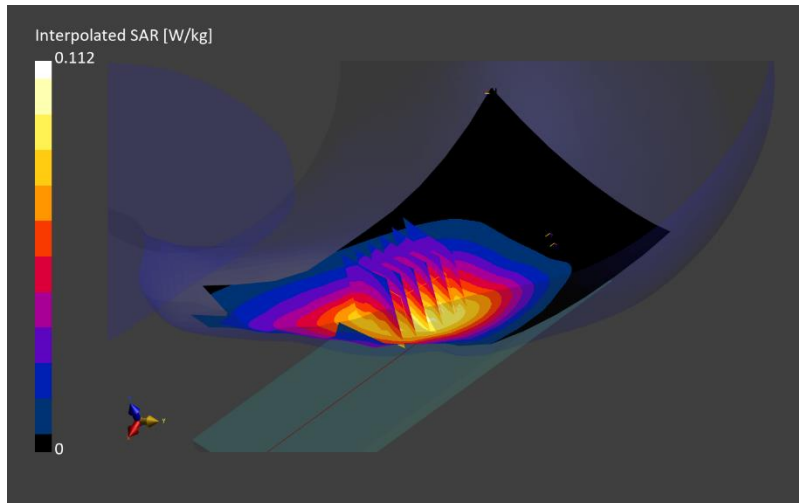
Test Date	Ambient Temp [°C]	TSL Temp [°C]	Measurement SW	Phantom	Type	Cond. [S/m]	TSL Perm.	Probe, Cal. Date	DAE, Cal. Date
2024-02-19	22.9	21.5	16.2.4.2524	Twin-SAM V8.0 - 2165	HSL	0.906	42.6	EX3DV4 - SN7859, 2023-12-19	DAE4ip Sn1844, 2023-11-02

Scans Setup

	Area Scan	Zoom Scan
Grid Extents [mm]	120.0 x 210.0	30.0 x 30.0 x 30.0
Grid Steps [mm]	15.0 x 15.0	6.0 x 6.0 x 1.5
Sensor Surface [mm]	3.0	1.4
Grading Ratio	N/A	1.5
MAIA	Y	Y

Measurement Results

psSAR1g [W/Kg]	0.092
Power Drift [dB]	0.15
Peak SAR (Extrapolated) [W/kg]	0.112
M2/M1 [%]	95.0
Dist 3dB Peak [mm]	> 15.0



RF SAFETY LABORATORY

DUT: PY7-27433F; SN: 0KQLD

Test Conditions

Exposure Condition	Position, Test Distance [mm]	Band	Signal, UID	Ant.	Channel Number	Frequency [MHz]	ConvF (x,y,z)
Body-worn/Hotspot	Flat, BACK, 10.00	Band 13	LTE-FDD (SC-FDMA, 1 RB, 10 MHz, QPSK) RBPosition:High AntennaCfg:SISO, 10175	Main1	Ch. 23230	782.000	9.57

Test Setup

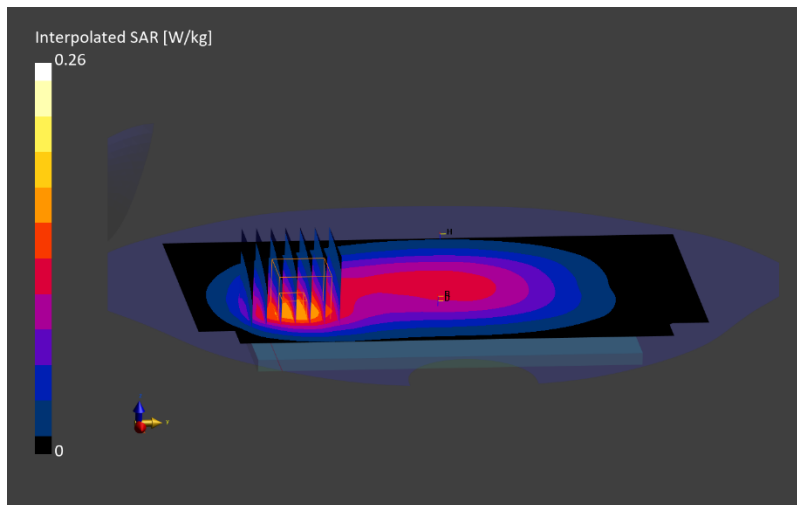
Test Date	Ambient Temp [°C]	TSL Temp [°C]	Measurement SW	Phantom	Type	Cond. [S/m]	TSL Perm.	Probe, Cal. Date	DAE, Cal. Date
2024-02-19	22.9	21.5	16.2.4.2524	Twinn-SAM V8.0 - 2165	HSL	0.906	42.6	EX3DV4 - SN7859, 2023-12-19	DAE4ip Sn1844, 2023-11-02

Scans Setup

	Area Scan	Zoom Scan
Grid Extents [mm]	120.0 x 210.0	30.0 x 30.0 x 30.0
Grid Steps [mm]	15.0 x 15.0	6.0 x 6.0 x 1.5
Sensor Surface [mm]	3.0	1.4
Grading Ratio	N/A	1.5
MAIA	Y	Y

Measurement Results

psSAR1g [W/Kg]	0.152
Power Drift [dB]	-0.03
Peak SAR (Extrapolated) [W/kg]	0.260
M2/M1 [%]	82.1
Dist 3dB Peak [mm]	18.0



RF SAFETY LABORATORY

DUT: PDX-245 A4; SN: 0KQLD

Test Conditions

Exposure Condition	Position, Test Distance [mm]	Band	Signal, UID	Ant.	Channel Number	Frequency [MHz]	ConvF (x,y,z)
Head	Right Head, CHEEK, 0.00	Band 5	LTE-FDD (SC-FDMA, 50% RB, 10 MHz, QPSK) RBPosition:High AntennaCfg:SISO, 10154	Main1	Ch. 20525	836.500	9.24

Test Setup

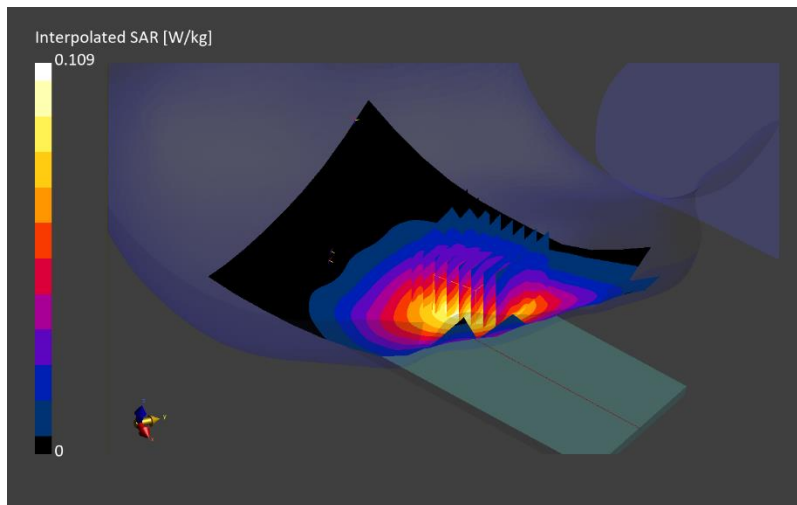
Test Date	Ambient Temp [°C]	TSL Temp [°C]	Measurement SW	Phantom	Type	Cond. [S/m]	TSL Perm.	Probe, Cal. Date	DAE, Cal. Date
2024-02-19	22.9	21.5	16.2.4.2524	Twin-SAM V8.0 - 2165	HSL	0.929	42.4	EX3DV4 - SN7859, 2023-12-19	DAE4ip Sn1844, 2023-11-02

Scans Setup

	Area Scan	Zoom Scan
Grid Extents [mm]	120.0 x 210.0	30.0 x 30.0 x 30.0
Grid Steps [mm]	15.0 x 15.0	6.0 x 6.0 x 1.5
Sensor Surface [mm]	3.0	1.4
Grading Ratio	N/A	1.5
MAIA	Y	Y

Measurement Results

psSAR1g [W/Kg]	0.088
Power Drift [dB]	-0.02
Peak SAR (Extrapolated) [W/kg]	0.109
M2/M1 [%]	95.2
Dist 3dB Peak [mm]	21.1



RF SAFETY LABORATORY

DUT: PY7-27433F; SN: 0KQLD

Test Conditions

Exposure Condition	Position, Test Distance [mm]	Band	Signal, UID	Ant.	Channel Number	Frequency [MHz]	ConvF (x,y,z)
Body-worn/Hotspot	Flat, BACK, 10.00	Band 5	LTE-FDD (SC-FDMA, 1 RB, 10 MHz, QPSK) RBPosition:Low AntennaCfg:SISO, 10175	Main1	Ch. 20525	836.500	9.24

Test Setup

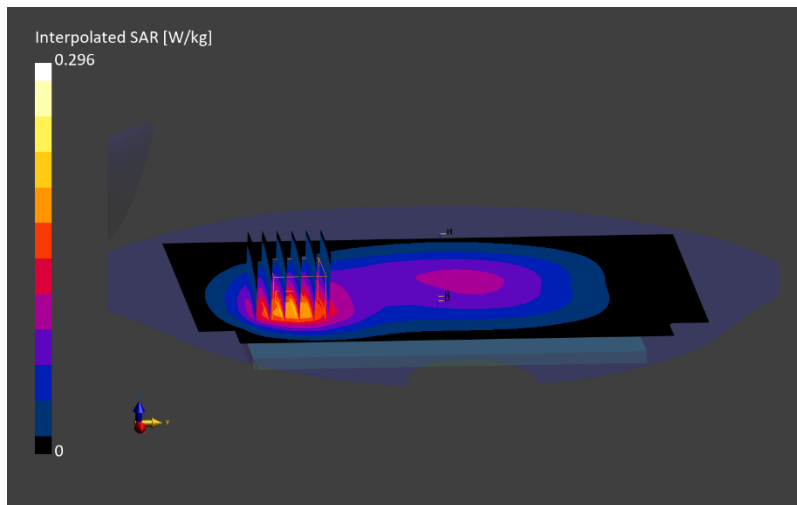
Test Date	Ambient Temp [°C]	TSL Temp [°C]	Measurement SW	Phantom	Type	Cond. [S/m]	TSL Perm.	Probe, Cal. Date	DAE, Cal. Date
2024-02-19	22.9	21.5	16.2.4.2524	Twinn-SAM V8.0 - 2165	HSL	0.929	42.4	EX3DV4 - SN7859, 2023-12-19	DAE4ip Sn1844, 2023-11-02

Scans Setup

	Area Scan	Zoom Scan
Grid Extents [mm]	120.0 x 210.0	30.0 x 30.0 x 30.0
Grid Steps [mm]	15.0 x 15.0	6.0 x 6.0 x 1.5
Sensor Surface [mm]	3.0	1.4
Grading Ratio	N/A	1.5
MAIA	Y	Y

Measurement Results

psSAR1g [W/Kg]	0.172
Power Drift [dB]	-0.01
Peak SAR (Extrapolated) [W/kg]	0.296
M2/M1 [%]	81.5
Dist 3dB Peak [mm]	16.7



RF SAFETY LABORATORY

DUT: PY7-27433F; SN: 0KQLD

Test Conditions

Exposure Condition	Position, Test Distance [mm]	Band	Signal, UID	Ant.	Channel Number	Frequency [MHz]	ConvF (x,y,z)
Head	Right Head, CHEEK, 0.00	Band 66	LTE-FDD (SC-FDMA, 50% RB, 20 MHz, QPSK) RBPosition:Mid AntennaCfg:SISO, 10297	Main2	Ch. 132322	1745.000	8.36

Test Setup

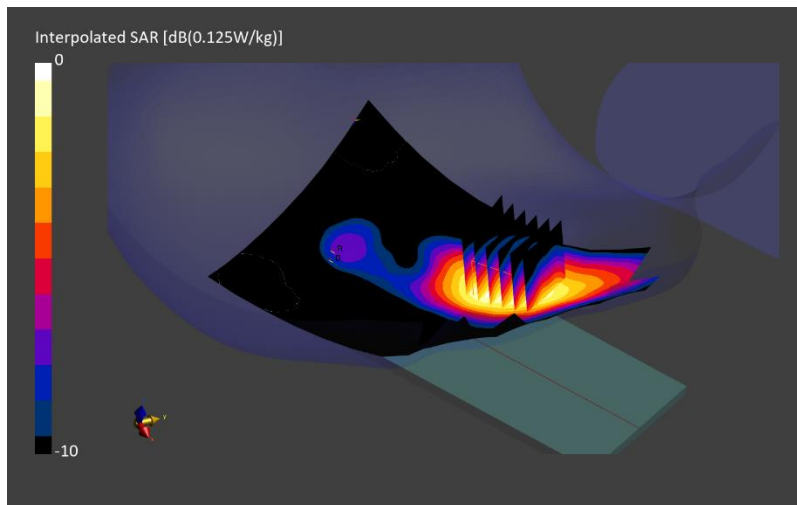
Test Date	Ambient Temp [°C]	TSL Temp [°C]	Measurement SW	Phantom	Type	Cond. [S/m]	TSL Perm.	Probe, Cal. Date	DAE, Cal. Date
2024-02-19	22.7	22.2	16.2.4.2524	Twin-SAM V8.0 - 2159	HSL	1.37	39.1	EX3DV4 - SN7836, 2023-10-11	DAE4ip Sn1839, 2023-10-09

Scans Setup

	Area Scan	Zoom Scan
Grid Extents [mm]	120.0 x 210.0	30.0 x 30.0 x 30.0
Grid Steps [mm]	15.0 x 15.0	6.0 x 6.0 x 1.5
Sensor Surface [mm]	3.0	1.4
Grading Ratio	N/A	1.5
MAIA	Y	Y

Measurement Results

psSAR1g [W/Kg]	0.084
Power Drift [dB]	0.02
Peak SAR (Extrapolated) [W/kg]	0.125
M2/M1 [%]	90.1
Dist 3dB Peak [mm]	11.2



RF SAFETY LABORATORY

DUT: PY7-27433F; SN: 0KQLD

Test Conditions

Exposure Condition	Position, Test Distance [mm]	Band	Signal, UID	Ant.	Channel Number	Frequency [MHz]	ConvF (x,y,z)
Body-worn	Flat, BACK, 10.00	Band 66	LTE-FDD (SC-FDMA, 50% RB, 20 MHz, QPSK) RBPosition:Mid AntennaCfg:SISO, 10297	Main2	Ch. 132322	1745.000	8.36

Test Setup

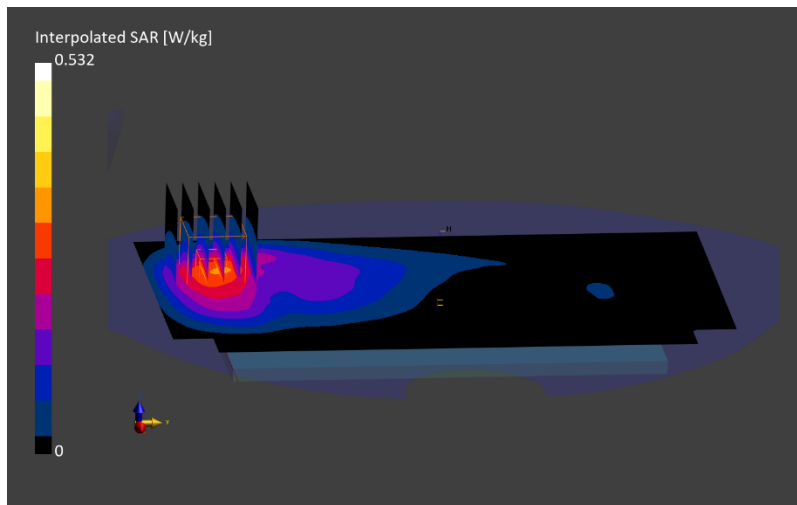
Test Date	Ambient Temp [°C]	TSL Temp [°C]	Measurement SW	Phantom	Type	Cond. [S/m]	TSL Perm.	Probe, Cal. Date	DAE, Cal. Date
2024-02-21	23.1	22	16.2.4.2524	Twinn-SAM V8.0 - 2159	HSL	1.37	38.8	EX3DV4 - SN7836, 2023-10-11	DAE4ip Sn1839, 2023-10-09

Scans Setup

	Area Scan	Zoom Scan
Grid Extents [mm]	120.0 x 210.0	30.0 x 30.0 x 30.0
Grid Steps [mm]	15.0 x 15.0	6.0 x 6.0 x 1.5
Sensor Surface [mm]	3.0	1.4
Grading Ratio	N/A	1.5
MAIA	Y	Y

Measurement Results

psSAR1g [W/Kg]	0.301
Power Drift [dB]	0.03
Peak SAR (Extrapolated) [W/kg]	0.532
M2/M1 [%]	81.8
Dist 3dB Peak [mm]	11.9



RF SAFETY LABORATORY

DUT: PY7-27433F; SN: 0KQLD

Test Conditions

Exposure Condition	Position, Test Distance [mm]	Band	Signal, UID	Ant.	Channel Number	Frequency [MHz]	ConvF (x,y,z)
Hotspot	Flat, EDGE BOTTOM, 10.00	Band 66	LTE-FDD (SC-FDMA, 1 RB, 20 MHz, QPSK) RBPosition:Mid AntennaCfg:SISO, 10169	Main2	Ch. 132322	1745.000	8.36

Test Setup

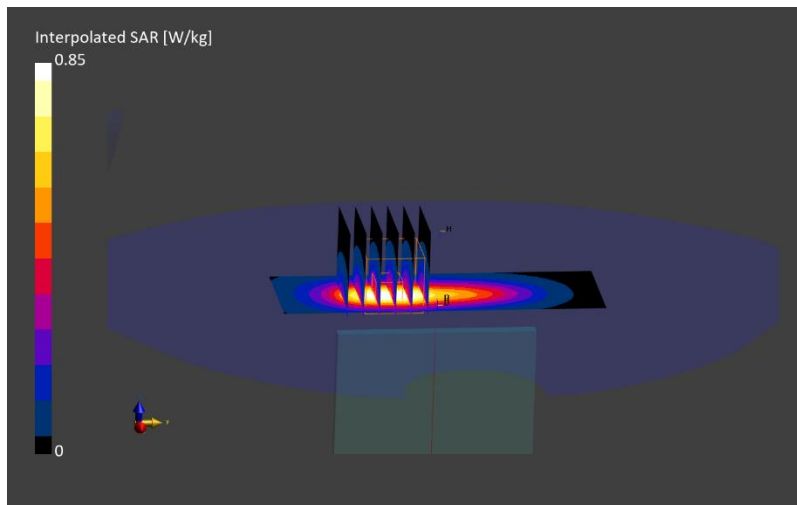
Test Date	Ambient Temp [°C]	TSL Temp [°C]	Measurement SW	Phantom	Type	Cond. [S/m]	TSL Perm.	Probe, Cal. Date	DAE, Cal. Date
2024-02-21	23.1	22	16.2.4.2524	Twinn-SAM V8.0 - 2159	HSL	1.37	38.8	EX3DV4 - SN7836, 2023-10-11	DAE4ip Sn1839, 2023-10-09

Scans Setup

	Area Scan	Zoom Scan
Grid Extents [mm]	40.0 x 120.0	30.0 x 30.0 x 30.0
Grid Steps [mm]	5.0 x 15.0	6.0 x 6.0 x 1.5
Sensor Surface [mm]	3.0	1.4
Grading Ratio	N/A	1.5
MAIA	Y	Y

Measurement Results

psSAR1g [W/Kg]	0.372
Power Drift [dB]	0
Peak SAR (Extrapolated) [W/kg]	0.850
M2/M1 [%]	83.0
Dist 3dB Peak [mm]	11.4



RF SAFETY LABORATORY

DUT: PY7-27433F; SN: 0KQLD

Test Conditions

Exposure Condition	Position, Test Distance [mm]	Band	Signal, UID	Ant.	Channel Number	Frequency [MHz]	ConvF (x,y,z)
Head	Right Head, CHEEK, 0.00	Band 25	LTE-FDD (SC-FDMA, 50% RB, 20 MHz, QPSK) RBPosition:High AntennaCfg:SISO, 10297	Main2	Ch. 26590	1905.000	8.26

Test Setup

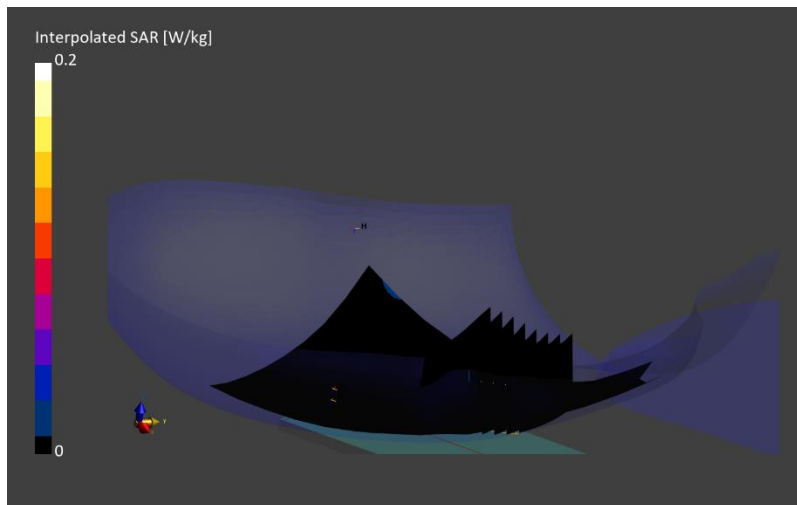
Test Date	Ambient Temp [°C]	TSL Temp [°C]	Measurement SW	Phantom	Type	Cond. [S/m]	TSL Perm.	Probe, Cal. Date	DAE, Cal. Date
2024-02-19	22.7	22.2	16.2.4.2524	Twin-SAM V8.0 - 2159	HSL	1.46	38.8	EX3DV4 - SN7836, 2023-10-11	DAE4ip Sn1839, 2023-10-09

Scans Setup

	Area Scan	Zoom Scan
Grid Extents [mm]	120.0 x 210.0	30.0 x 30.0 x 30.0
Grid Steps [mm]	15.0 x 15.0	6.0 x 6.0 x 1.5
Sensor Surface [mm]	3.0	1.4
Grading Ratio	N/A	1.5
MAIA	Y	Y

Measurement Results

psSAR1g [W/Kg]	0.016
Power Drift [dB]	0.12
Peak SAR (Extrapolated) [W/kg]	0.071
M2/M1 [%]	23.7
Dist 3dB Peak [mm]	7.3



RF SAFETY LABORATORY

DUT: PY7-27433F; SN: 0KQLD

Test Conditions

Exposure Condition	Position, Test Distance [mm]	Band	Signal, UID	Ant.	Channel Number	Frequency [MHz]	ConvF (x,y,z)
Body-worn	Flat, BACK, 10.00	Band 25	LTE-FDD (SC-FDMA, 50% RB, 20 MHz, QPSK) RBPosition:High AntennaCfg:SISO, 10297	Main2	Ch. 26590	1905.000	8.26

Test Setup

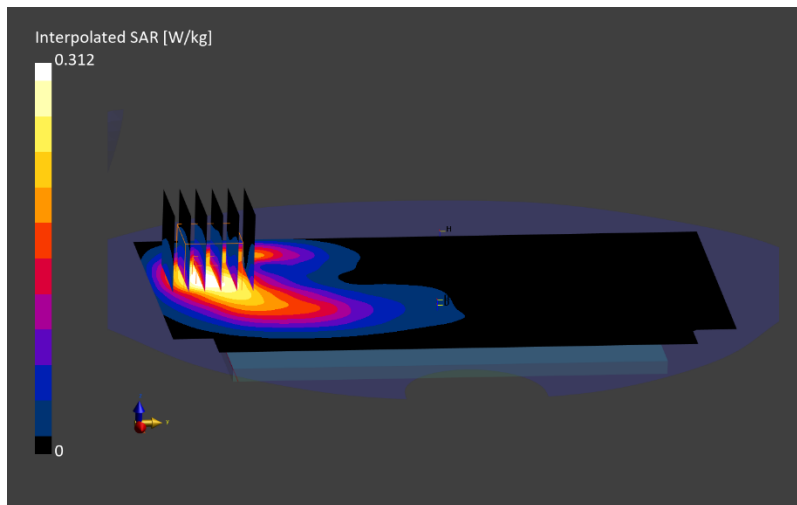
Test Date	Ambient Temp [°C]	TSL Temp [°C]	Measurement SW	Phantom	Type	Cond. [S/m]	TSL Perm.	Probe, Cal. Date	DAE, Cal. Date
2024-02-21	23.1	22	16.2.4.2524	Twin-SAM V8.0 - 2159	HSL	1.46	38.5	EX3DV4 - SN7836, 2023-10-11	DAE4ip Sn1839, 2023-10-09

Scans Setup

	Area Scan	Zoom Scan
Grid Extents [mm]	120.0 x 210.0	30.0 x 30.0 x 30.0
Grid Steps [mm]	15.0 x 15.0	6.0 x 6.0 x 1.5
Sensor Surface [mm]	3.0	1.4
Grading Ratio	N/A	1.5
MAIA	Y	Y

Measurement Results

psSAR1g [W/Kg]	0.174
Power Drift [dB]	0.01
Peak SAR (Extrapolated) [W/kg]	0.312
M2/M1 [%]	84.1
Dist 3dB Peak [mm]	9.7



RF SAFETY LABORATORY

DUT: PY7-27433F; SN: 0KQLD

Test Conditions

Exposure Condition	Position, Test Distance [mm]	Band	Signal, UID	Ant.	Channel Number	Frequency [MHz]	ConvF (x,y,z)
Hotspot	Flat, EDGE BOTTOM, 10.00	Band 25	LTE-FDD (SC-FDMA, 50% RB, 20 MHz, QPSK) RBPosition:High AntennaCfg:SISO, 10297	Main2	Ch. 26590	1905.000	8.26

Test Setup

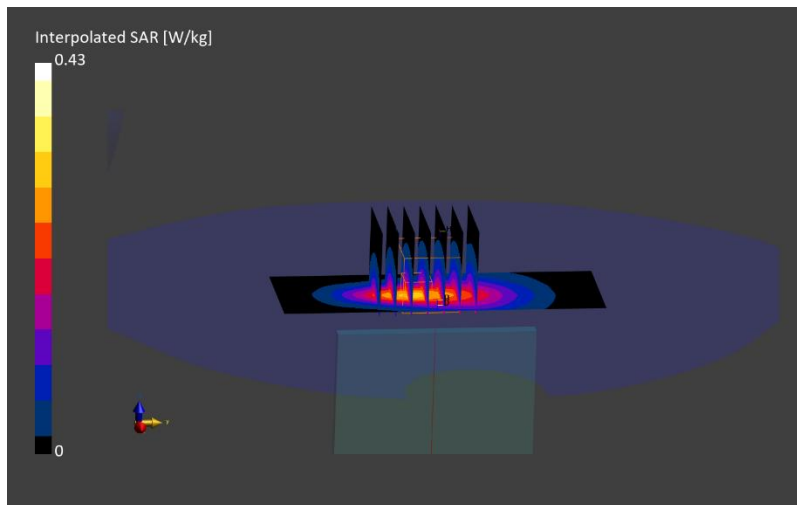
Test Date	Ambient Temp [°C]	TSL Temp [°C]	Measurement SW	Phantom	Type	Cond. [S/m]	TSL Perm.	Probe, Cal. Date	DAE, Cal. Date
2024-02-21	23.1	22	16.2.4.2524	Twin-SAM V8.0 - 2159	HSL	1.46	38.5	EX3DV4 - SN7836, 2023-10-11	DAE4ip Sn1839, 2023-10-09

Scans Setup

	Area Scan	Zoom Scan
Grid Extents [mm]	40.0 x 120.0	30.0 x 30.0 x 30.0
Grid Steps [mm]	5.0 x 15.0	6.0 x 6.0 x 1.5
Sensor Surface [mm]	3.0	1.4
Grading Ratio	N/A	1.5
MAIA	Y	Y

Measurement Results

psSAR1g [W/Kg]	0.237
Power Drift [dB]	-0.03
Peak SAR (Extrapolated) [W/kg]	0.430
M2/M1 [%]	82.5
Dist 3dB Peak [mm]	9.9



RF SAFETY LABORATORY

DUT: PY7-27433F; SN: 02ELD

Test Conditions

Exposure Condition	Position, Test Distance [mm]	Band	Signal, UID	Ant.	Channel Number	Frequency [MHz]	ConvF (x,y,z)
Head	Right Head, CHEEK, 0.00	Band 41	LTE-TDD (SC-FDMA, 50% RB, 20 MHz, QPSK, UL Subframe=2,3,4,7,8,9) RBPosition:Mid AntennaCfg:SISO, 10494	Main2	Ch. 41055	2636.500	7.1

Test Setup

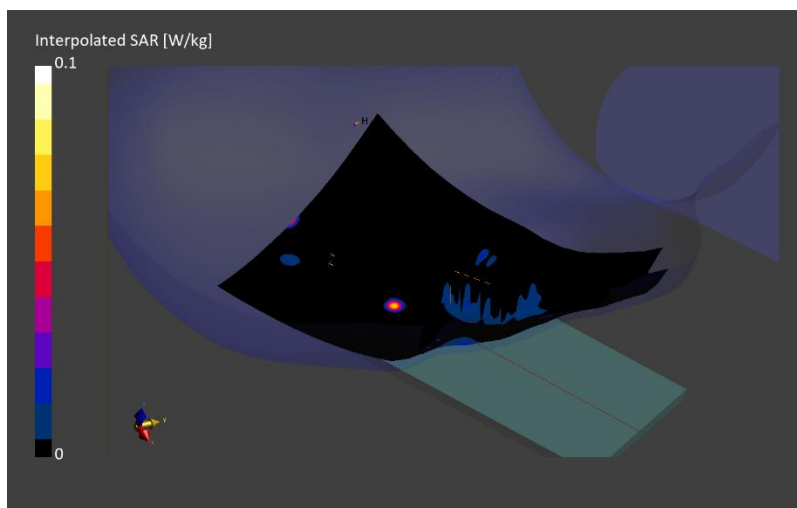
Test Date	Ambient Temp [°C]	TSL Temp [°C]	Measurement SW	Phantom	Type	Cond. [S/m]	TSL Perm.	Probe, Cal. Date	DAE, Cal. Date
2024-02-19	23.1	21.1	16.2.4.2524	Twin-SAM V8.0 - 2164	HSL	1.99	38.9	EX3DV4 - SN7857, 2023-12-19	DAE4ip Sn1843, 2023-11-02

Scans Setup

	Area Scan	Zoom Scan
Grid Extents [mm]	120.0 x 200.0	30.0 x 30.0 x 30.0
Grid Steps [mm]	10.0 x 10.0	5.0 x 5.0 x 1.5
Sensor Surface [mm]	3.0	1.4
Grading Ratio	N/A	1.5
MAIA	Y	Y

Measurement Results

psSAR1g [W/Kg]	0.017
Power Drift [dB]	0.18
Peak SAR (Extrapolated) [W/kg]	0.029
M2/M1 [%]	96.9
Dist 3dB Peak [mm]	9.1



RF SAFETY LABORATORY

DUT: PY7-27433F; SN: 02ELD

Test Conditions

Exposure Condition	Position, Test Distance [mm]	Band	Signal, UID	Ant.	Channel Number	Frequency [MHz]	ConvF (x,y,z)
Body-worn	Flat, BACK, 10.00	Band 41	LTE-TDD (SC-FDMA, 50% RB, 20 MHz, QPSK, UL Subframe=2,3,4,7,8,9) RBPosition:Mid AntennaCfg:SISO, 10494	Main2	Ch. 41055	2636.500	7.1

Test Setup

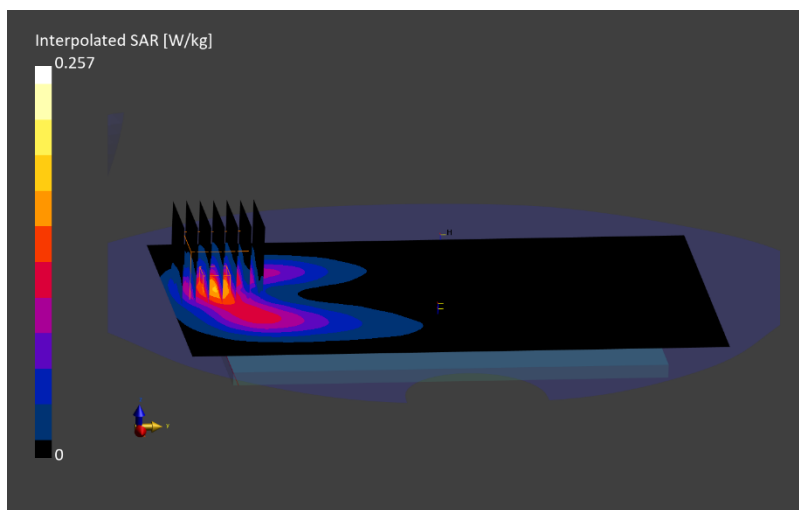
Test Date	Ambient Temp [°C]	TSL Temp [°C]	Measurement SW	Phantom	Type	Cond. [S/m]	TSL Perm.	Probe, Cal. Date	DAE, Cal. Date
2024-02-19	23.1	21.1	16.2.4.2524	Twin-SAM V8.0 - 2164	HSL	1.99	38.9	EX3DV4 - SN7857, 2023-12-19	DAE4ip Sn1843, 2023-11-02

Scans Setup

	Area Scan	Zoom Scan
Grid Extents [mm]	120.0 x 200.0	30.0 x 30.0 x 30.0
Grid Steps [mm]	10.0 x 10.0	5.0 x 5.0 x 1.5
Sensor Surface [mm]	3.0	1.4
Grading Ratio	N/A	1.5
MAIA	Y	Y

Measurement Results

psSAR1g [W/Kg]	0.138
Power Drift [dB]	-0.03
Peak SAR (Extrapolated) [W/kg]	0.257
M2/M1 [%]	83.3
Dist 3dB Peak [mm]	10.0



RF SAFETY LABORATORY

DUT: PY7-27433F; SN: 02ELD

Test Conditions

Exposure Condition	Position, Test Distance [mm]	Band	Signal, UID	Ant.	Channel Number	Frequency [MHz]	ConvF (x,y,z)
Hotspot	Flat, EDGE BOTTOM, 10.00	Band 41	LTE-TDD (SC-FDMA, 50% RB, 20 MHz, QPSK, UL Subframe=2,3,4,7,8,9) RBPosition:Mid AntennaCfg:SISO, 10494	Main2	Ch. 41055	2636.500	7.1

Test Setup

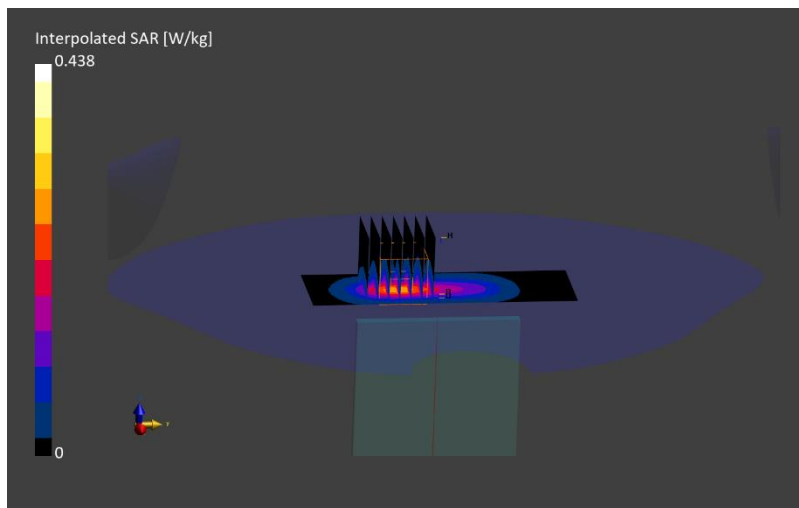
Test Date	Ambient Temp [°C]	TSL Temp [°C]	Measurement SW	Phantom	Type	Cond. [S/m]	TSL Perm.	Probe, Cal. Date	DAE, Cal. Date
2024-02-19	23.1	21.1	16.2.4.2524	Twin-SAM V8.0 - 2164	HSL	1.99	38.9	EX3DV4 - SN7857, 2023-12-19	DAE4ip Sn1843, 2023-11-02

Scans Setup

	Area Scan	Zoom Scan
Grid Extents [mm]	40.0 x 120.0	30.0 x 30.0 x 30.0
Grid Steps [mm]	5.0 x 10.0	5.0 x 5.0 x 1.5
Sensor Surface [mm]	3.0	1.4
Grading Ratio	N/A	1.5
MAIA	Y	Y

Measurement Results

psSAR1g [W/Kg]	0.219
Power Drift [dB]	-0.02
Peak SAR (Extrapolated) [W/kg]	0.438
M2/M1 [%]	81.4
Dist 3dB Peak [mm]	9.5



RF SAFETY LABORATORY

DUT: PY7-27433F; SN: 0D9LD

Test Conditions

Exposure Condition	Position, Test Distance [mm]	Band	Signal, UID	Ant.	Channel Number	Frequency [MHz]	ConvF (x,y,z)
Head	Right Head, CHEEK, 0.00	WLAN 2.4GHz	IEEE 802.11n (HT Mixed, 6.5 Mbps, BPSK), 10196	MIMO	Ch. 6	2437.000	7.11

Test Setup

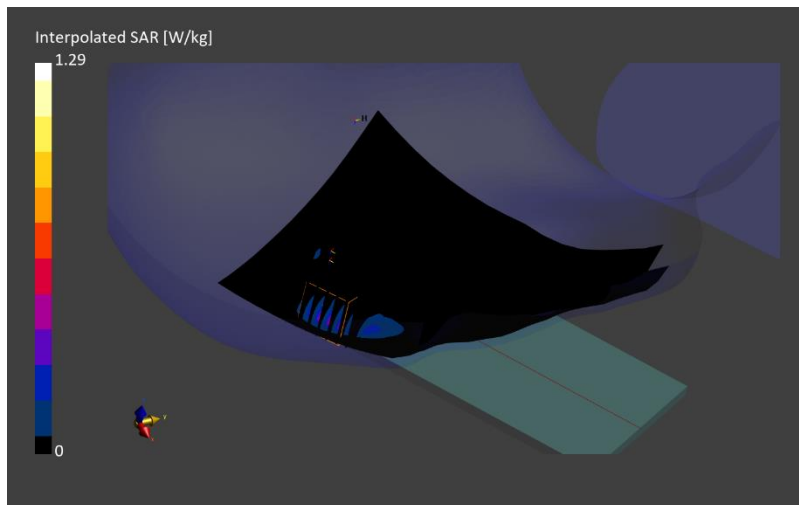
Test Date	Ambient Temp [°C]	TSL Temp [°C]	Measurement SW	Phantom	Type	Cond. [S/m]	TSL Perm.	Probe, Cal. Date	DAE, Cal. Date
2024-02-21	23.1	20.8	16.2.4.2524	Twin-SAM V8.0 - 2164	HSL	1.84	39.9	EX3DV4 - SN7857, 2023-12-19	DAE4ip Sn1843, 2023-11-02

Scans Setup

	Area Scan	Zoom Scan
Grid Extents [mm]	120.0 x 200.0	30.0 x 30.0 x 30.0
Grid Steps [mm]	10.0 x 10.0	5.0 x 5.0 x 1.5
Sensor Surface [mm]	3.0	1.4
Grading Ratio	N/A	1.5
MAIA	Y	Y

Measurement Results

psSAR1g [W/Kg]	0.51
Power Drift [dB]	0.05
Peak SAR (Extrapolated) [W/kg]	1.29
M2/M1 [%]	78.8
Dist 3dB Peak [mm]	6.1



RF SAFETY LABORATORY

DUT: PY7-27433F; SN: 0D9LD

Test Conditions

Exposure Condition	Position, Test Distance [mm]	Band	Signal, UID	Ant.	Channel Number	Frequency [MHz]	ConvF (x,y,z)
Body-worn/Hotspot	Flat, BACK, 10.00	WLAN 2.4GHz	IEEE 802.11n (HT Mixed, 6.5 Mbps, BPSK), 10196	MIMO	Ch. 6	2437.000	7.11

Test Setup

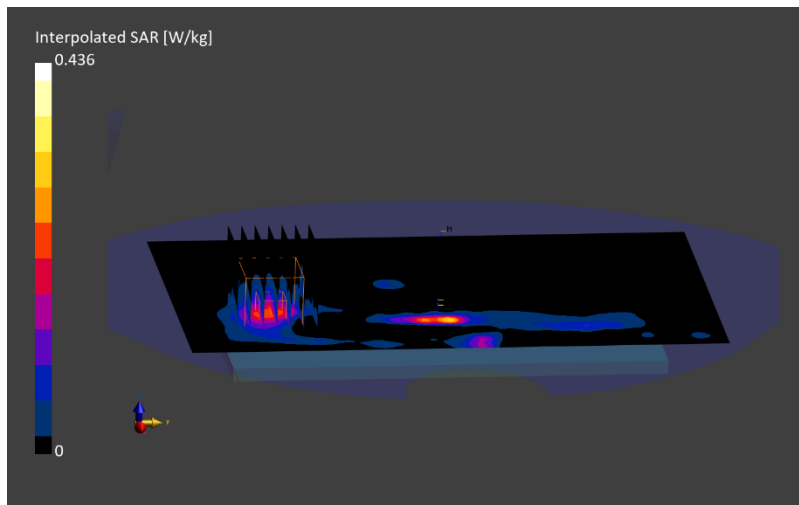
Test Date	Ambient Temp [°C]	TSL Temp [°C]	Measurement SW	Phantom	Type	Cond. [S/m]	TSL Perm.	Probe, Cal. Date	DAE, Cal. Date
2024-02-21	23.1	20.8	16.2.4.2524	Twin-SAM V8.0 - 2164	HSL	1.84	39.9	EX3DV4 - SN7857, 2023-12-19	DAE4ip Sn1843, 2023-11-02

Scans Setup

	Area Scan	Zoom Scan
Grid Extents [mm]	120.0 x 200.0	30.0 x 30.0 x 30.0
Grid Steps [mm]	10.0 x 10.0	5.0 x 5.0 x 1.5
Sensor Surface [mm]	3.0	1.4
Grading Ratio	N/A	1.5
MAIA	Y	Y

Measurement Results

psSAR1g [W/Kg]	0.205
Power Drift [dB]	-0.09
Peak SAR (Extrapolated) [W/kg]	0.436
M2/M1 [%]	79.3
Dist 3dB Peak [mm]	8.1



RF SAFETY LABORATORY

DUT: PY7-27433F; SN: 0LNLD

Test Conditions

Exposure Condition	Position, Test Distance [mm]	Band	Signal, UID	Ant.	Channel Number	Frequency [MHz]	ConvF (x,y,z)
Head	Right Head, CHEEK, 0.00	WLAN 5 GHz U-NII-2A	IEEE 802.11n (HT Mixed, 13.5 Mbps, BPSK), 10117	Chain0	Ch. 62	5310.000	5.33

Test Setup

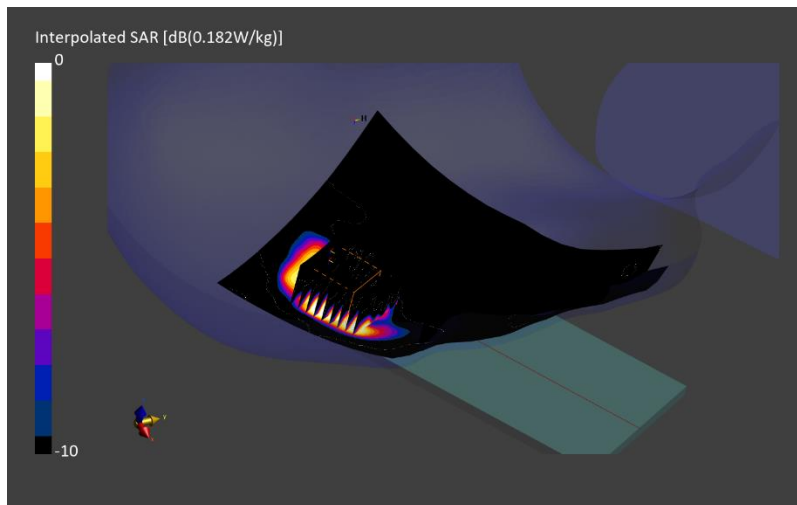
Test Date	Ambient Temp [°C]	TSL Temp [°C]	Measurement SW	Phantom	Type	Cond. [S/m]	TSL Perm.	Probe, Cal. Date	DAE, Cal. Date
2024-02-28	23.4	21.5	16.2.4.2524	Twin-SAM V8.0 - 2159	HSL	4.46	34.3	EX3DV4 - SN7836, 2023-10-11	DAE4ip Sn1839, 2023-10-09

Scans Setup

	Area Scan	Zoom Scan
Grid Extents [mm]	120.0 x 200.0	24.0 x 24.0 x 22.0
Grid Steps [mm]	10.0 x 10.0	4.0 x 4.0 x 1.4
Sensor Surface [mm]	3.0	1.4
Grading Ratio	N/A	1.4
MAIA	Y	Y

Measurement Results

psSAR1g [W/Kg]	0.269
Power Drift [dB]	-0.07
Peak SAR (Extrapolated) [W/kg]	1.21
M2/M1 [%]	60.2
Dist 3dB Peak [mm]	4.8



RF SAFETY LABORATORY

DUT: PY7-27433F; SN: 088LD

Test Conditions

Exposure Condition	Position, Test Distance [mm]	Band	Signal, UID	Ant.	Channel Number	Frequency [MHz]	ConvF (x,y,z)
Body-worn/Hotspot	Flat, BACK, 10.00	WLAN 5 GHz U-NII-3	IEEE 802.11n (HT Mixed, 13.5 Mbps, BPSK), 10117	Chain1	Ch. 159	5795.000	4.78

Test Setup

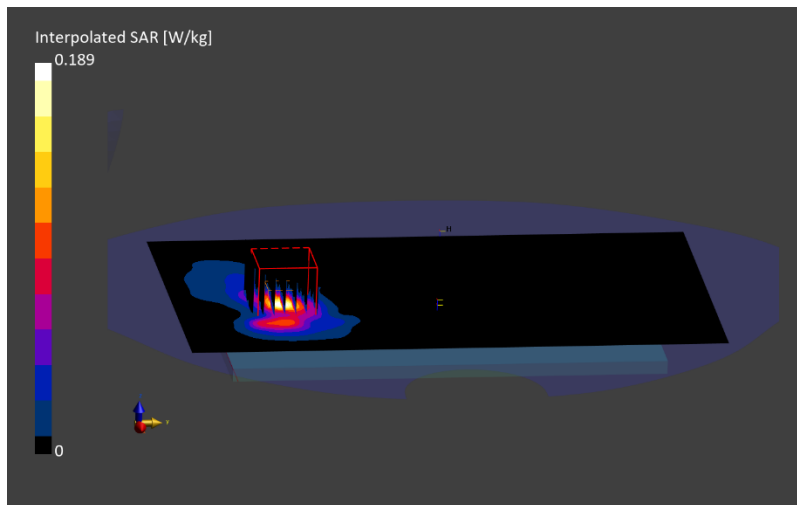
Test Date	Ambient Temp [°C]	TSL Temp [°C]	Measurement SW	Phantom	Type	Cond. [S/m]	TSL Perm.	Probe, Cal. Date	DAE, Cal. Date
2024-02-28	23.4	21.5	16.2.4.2524	Twin-SAM V8.0 - 2159	HSL	4.98	33.5	EX3DV4 - SN7836, 2023-10-11	DAE4ip Sn1839, 2023-10-09

Scans Setup

	Area Scan	Zoom Scan
Grid Extents [mm]	120.0 x 200.0	24.0 x 24.0 x 22.0
Grid Steps [mm]	10.0 x 10.0	4.0 x 4.0 x 1.4
Sensor Surface [mm]	3.0	1.4
Grading Ratio	N/A	1.4
MAIA	Y	Y

Measurement Results

psSAR1g [W/Kg]	0.118
Power Drift [dB]	-0.04
Peak SAR (Extrapolated) [W/kg]	0.500
M2/M1 [%]	56.5
Dist 3dB Peak [mm]	6.1



RF SAFETY LABORATORY

DUT: PY7-27433F; SN: 088LD

Test Conditions

Exposure Condition	Position, Test Distance [mm]	Band	Signal, UID	Ant.	Channel Number	Frequency [MHz]	ConvF (x,y,z)
Phablet	Flat, EDGE LEFT, 0.00	WLAN 5 GHz U-NII-2C	IEEE 802.11ac WiFi (80MHz, MCS0, 99pc duty cycle), 10544	Chain0	Ch. 122	5610.000	4.6

Test Setup

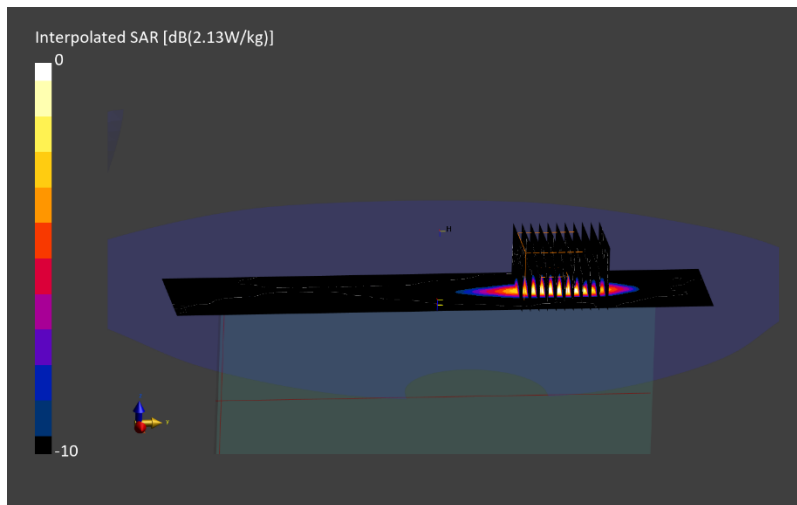
Test Date	Ambient Temp [°C]	TSL Temp [°C]	Measurement SW	Phantom	Type	Cond. [S/m]	TSL Perm.	Probe, Cal. Date	DAE, Cal. Date
2024-03-11	22.5	21.9	16.2.4.2524	Twin-SAM V8.0 - 2159	HSL	4.94	35.7	EX3DV4 - SN7836, 2023-10-11	DAE4ip Sn1839, 2023-10-09

Scans Setup

	Area Scan	Zoom Scan
Grid Extents [mm]	40.0 x 200.0	22.4 x 22.4 x 22.0
Grid Steps [mm]	5.0 x 10.0	3.2 x 3.2 x 1.4
Sensor Surface [mm]	3.0	1.4
Grading Ratio	N/A	1.4
MAIA	Y	Y

Measurement Results

psSAR10g[W/Kg]	0.333
Power Drift [dB]	0.21
Peak SAR (Extrapolated) [W/kg]	7.97
M2/M1 [%]	54.5
Dist 3dB Peak [mm]	3.9



RF SAFETY LABORATORY

DUT: PY7-27433F; SN: 088LD

Test Conditions

Exposure Condition	Position, Test Distance [mm]	Band	Signal, UID	Ant.	Channel Number	Frequency [MHz]	ConvF (x,y,z)
Head	Right Head, CHEEK, 0.00	2.4 GHz Bluetooth	IEEE 802.15.1 Bluetooth (GFSK, DH5), 10032	Chain0	Ch. 78	2480.000	7.11

Test Setup

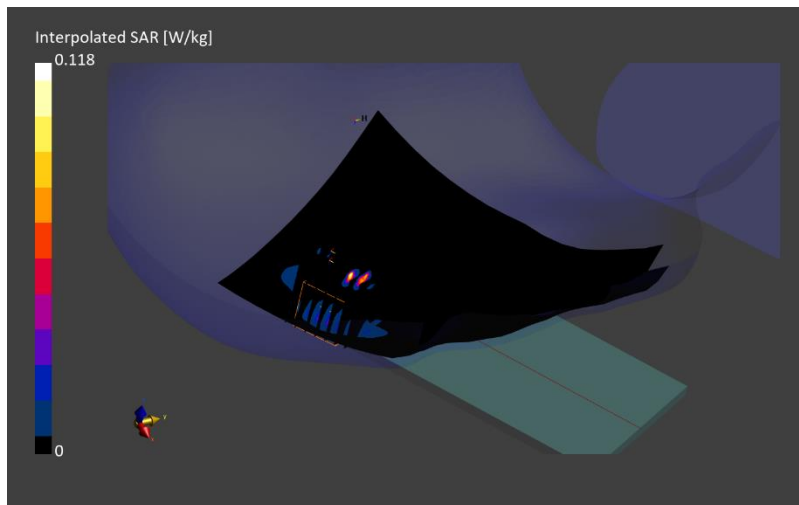
Test Date	Ambient Temp [°C]	TSL Temp [°C]	Measurement SW	Phantom	Type	Cond. [S/m]	TSL Perm.	Probe, Cal. Date	DAE, Cal. Date
2024-03-04	23.1	21.3	16.2.4.2524	Twin-SAM V8.0 - 2164	HSL	1.80	36.4	EX3DV4 - SN7857, 2023-12-19	DAE4ip Sn1843, 2023-11-02

Scans Setup

	Area Scan	Zoom Scan
Grid Extents [mm]	120.0 x 200.0	30.0 x 30.0 x 30.0
Grid Steps [mm]	10.0 x 10.0	5.0 x 5.0 x 1.5
Sensor Surface [mm]	3.0	1.4
Grading Ratio	N/A	1.5
MAIA	Y	Y

Measurement Results

psSAR1g [W/Kg]	0.035
Power Drift [dB]	0.07
Peak SAR (Extrapolated) [W/kg]	0.118
M2/M1 [%]	71.4
Dist 3dB Peak [mm]	5.5



RF SAFETY LABORATORY

DUT: PY7-27433F; SN: 088LD

Test Conditions

Exposure Condition	Position, Test Distance [mm]	Band	Signal, UID	Ant.	Channel Number	Frequency [MHz]	ConvF (x,y,z)
Body-worn	Flat, BACK, 10.00	2.4 GHz Bluetooth	IEEE 802.15.1 Bluetooth (GFSK, DH5), 10032	Chain0	Ch. 78	2480.000	7.11

Test Setup

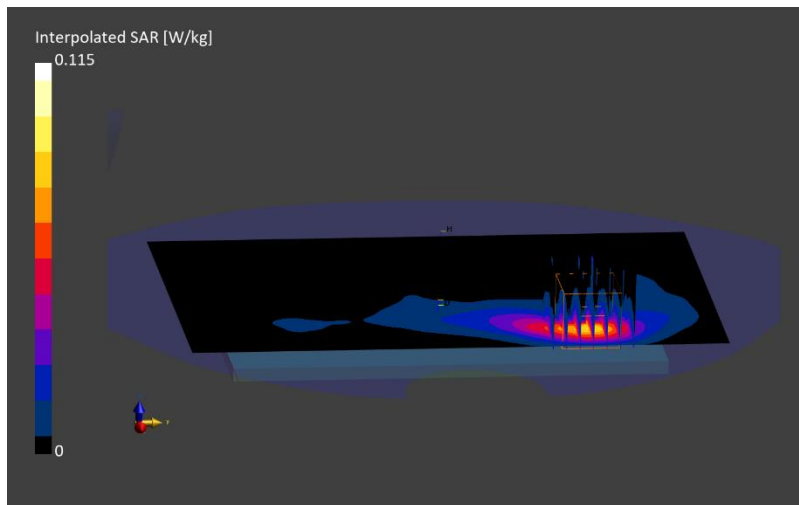
Test Date	Ambient Temp [°C]	TSL Temp [°C]	Measurement SW	Phantom	Type	Cond. [S/m]	TSL Perm.	Probe, Cal. Date	DAE, Cal. Date
2024-03-04	23.1	21.3	16.2.4.2524	Twin-SAM V8.0 - 2164	HSL	1.80	36.4	EX3DV4 - SN7857, 2023-12-19	DAE4ip Sn1843, 2023-11-02

Scans Setup

	Area Scan	Zoom Scan
Grid Extents [mm]	120.0 x 200.0	30.0 x 30.0 x 30.0
Grid Steps [mm]	10.0 x 10.0	5.0 x 5.0 x 1.5
Sensor Surface [mm]	3.0	1.4
Grading Ratio	N/A	1.5
MAIA	Y	Y

Measurement Results

psSAR1g [W/Kg]	0.059
Power Drift [dB]	0.01
Peak SAR (Extrapolated) [W/kg]	0.115
M2/M1 [%]	81.0
Dist 3dB Peak [mm]	9.0



RF SAFETY LABORATORY

DUT: PY7-27433F; SN: 088LD

Test Conditions

Exposure Condition	Position, Test Distance [mm]	Band	Signal, UID	Ant.	Channel Number	Frequency [MHz]	ConvF (x,y,z)
Hotspot	Flat, EDGE LEFT, 10.00	2.4 GHz Bluetooth	IEEE 802.15.1 Bluetooth (GFSK, DH5), 10032	Chain0	Ch. 78	2480.000	7.11

Test Setup

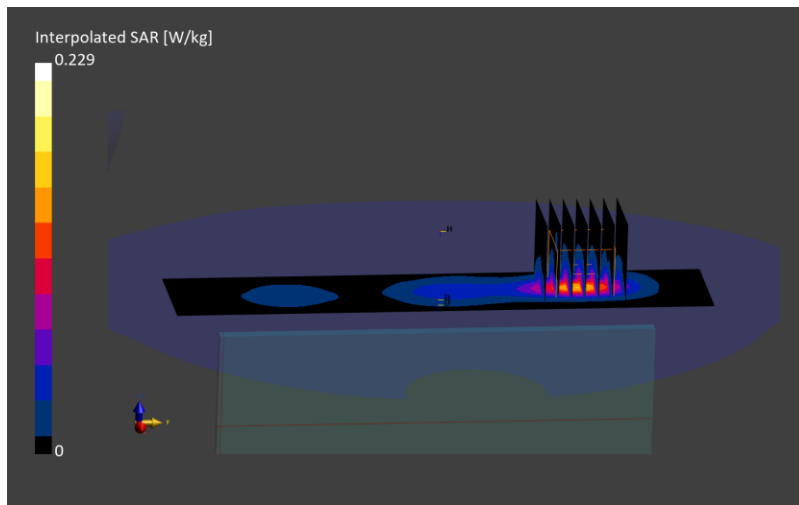
Test Date	Ambient Temp [°C]	TSL Temp [°C]	Measurement SW	Phantom	Type	Cond. [S/m]	TSL Perm.	Probe, Cal. Date	DAE, Cal. Date
2024-03-04	23.1	21.3	16.2.4.2524	Twin-SAM V8.0 - 2164	HSL	1.80	36.4	EX3DV4 - SN7857, 2023-12-19	DAE4ip Sn1843, 2023-11-02

Scans Setup

	Area Scan	Zoom Scan
Grid Extents [mm]	40.0 x 200.0	30.0 x 30.0 x 30.0
Grid Steps [mm]	5.0 x 10.0	5.0 x 5.0 x 1.5
Sensor Surface [mm]	3.0	1.4
Grading Ratio	N/A	1.5
MAIA	Y	Y

Measurement Results

psSAR1g [W/Kg]	0.113
Power Drift [dB]	0.04
Peak SAR (Extrapolated) [W/kg]	0.229
M2/M1 [%]	80.5
Dist 3dB Peak [mm]	8.0



RF SAFETY LABORATORY

DUT: PDX-245 A4; SN: 088LD

Test Conditions

Exposure Condition	Position, Test Distance [mm]	Band	Signal, UID	Ant.	Frequency [MHz]	ConvF (x,y,z)
Phablet	Flat, BACK, 0.00	NFC	CW, 0	NFC	13.600	17.1

Test Setup

Test Date	Ambient Temp [°C]	TSL Temp [°C]	Measurement SW	Phantom	Type	Cond. [S/m]	TSL Perm.	Probe, Cal. Date	DAE, Cal. Date
2024-03-13	21.5	22.4	16.2.4.2524	ELI V8.0 - 2216	HSL	0.726	53.7	EX3DV4 - SN7853, 2023-11-14	DAE4ip Sn1839, 2023-10-09

Scans Setup

	Area Scan	Zoom Scan
Grid Extents [mm]	120.0 x 210.0	30.0 x 30.0 x 30.0
Grid Steps [mm]	15.0 x 15.0	6.0 x 6.0 x 1.5
Sensor Surface [mm]	3.0	1.4
Grading Ratio	N/A	1.5
MAIA	Y	Y

Measurement Results

psSAR10g [W/Kg]	0.011
Power Drift [dB]	0.12
Peak SAR (Extrapolated) [W/kg]	0.175
M2/M1 [%]	49.0
Dist 3dB Peak [mm]	4.4

