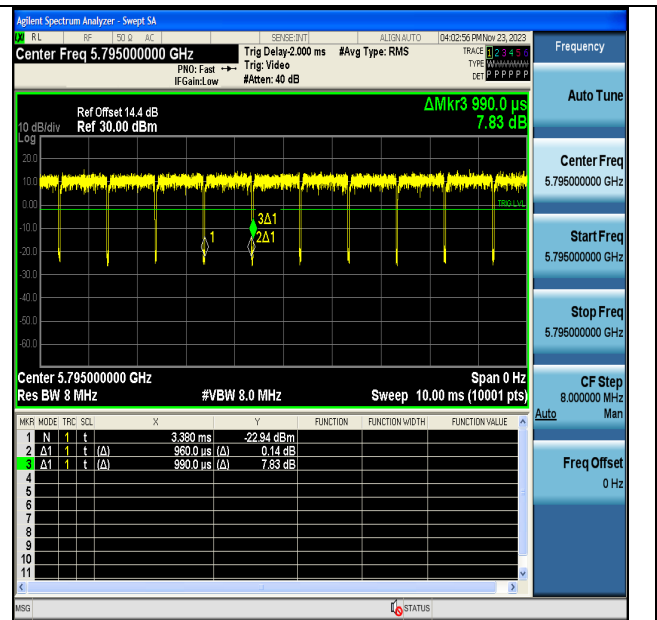
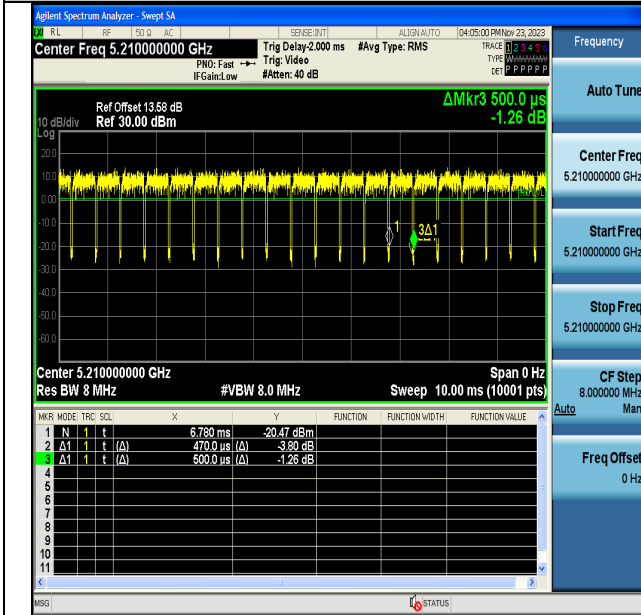


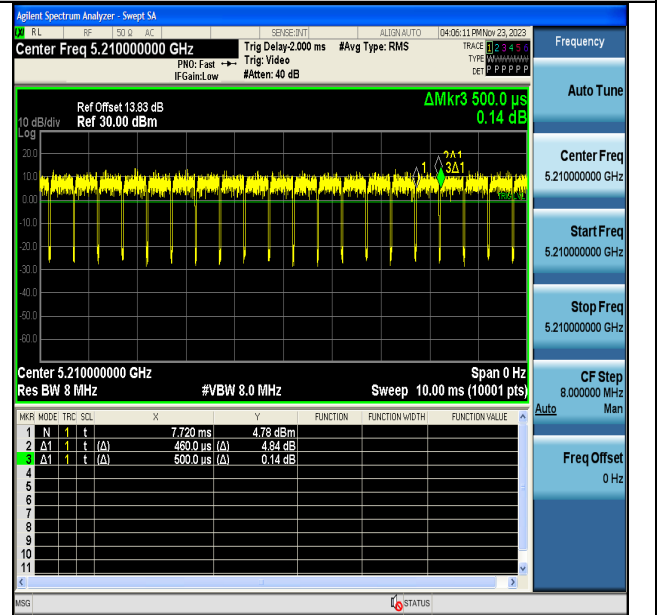
NTNV-11AC40MIMO-Ant6-5795



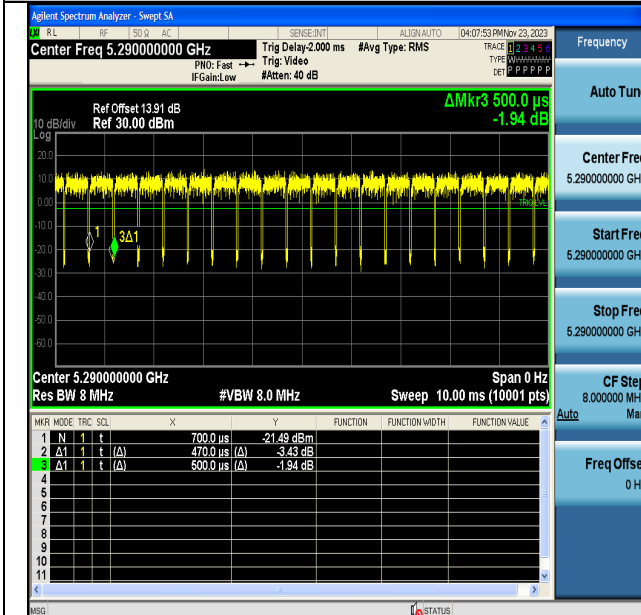
NTNV-11AC40MIMO-Ant7-5795



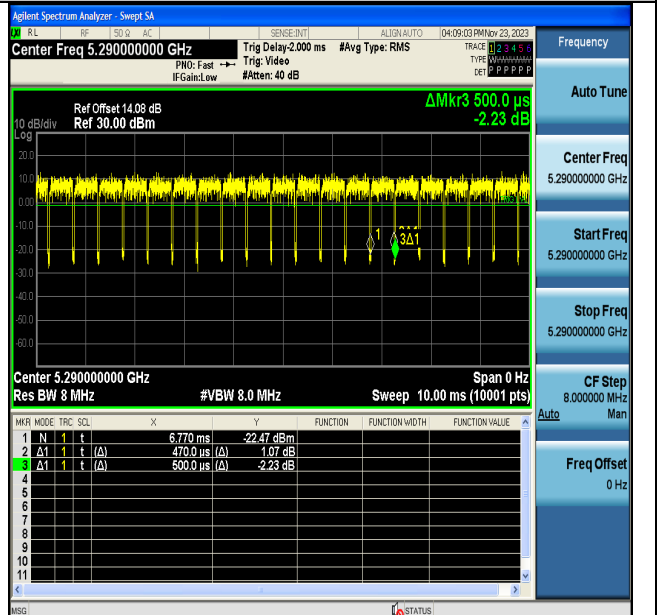
NTNV-11AC80MIMO-Ant6-5210



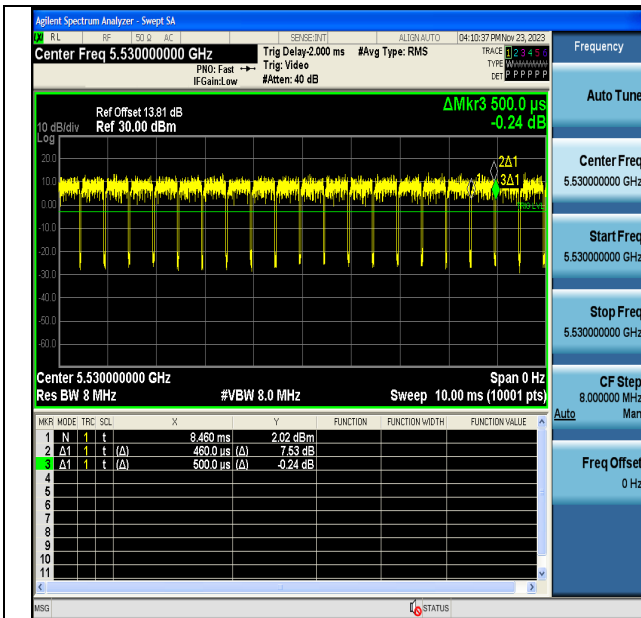
NTNV-11AC80MIMO-Ant7-5210



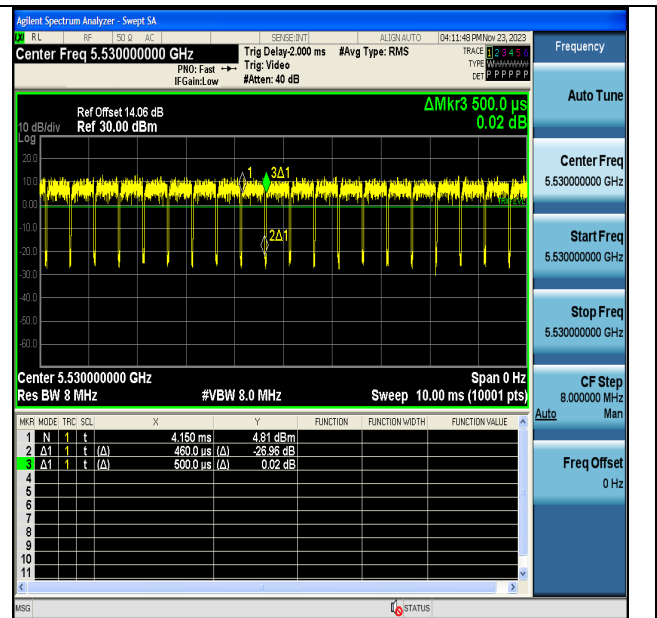
NTNV-11AC80MIMO-Ant6-5290



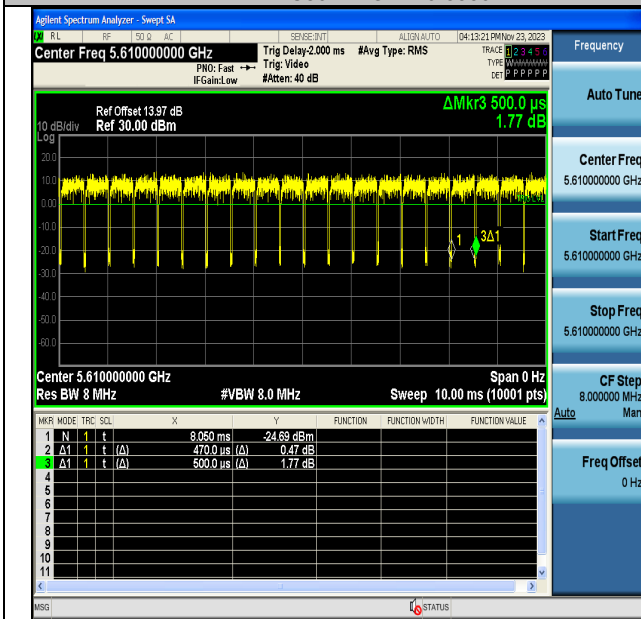
NTNV-11AC80MIMO-Ant7-5290



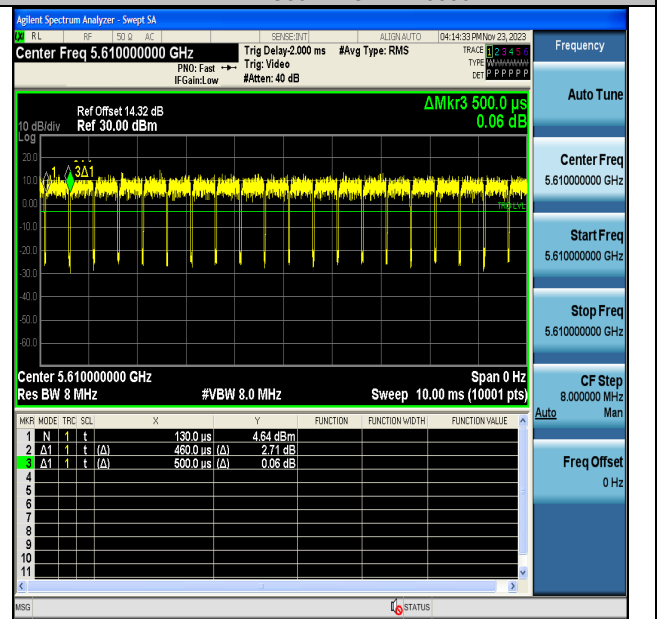
NTNV-11AC80MIMO-Ant6-5530



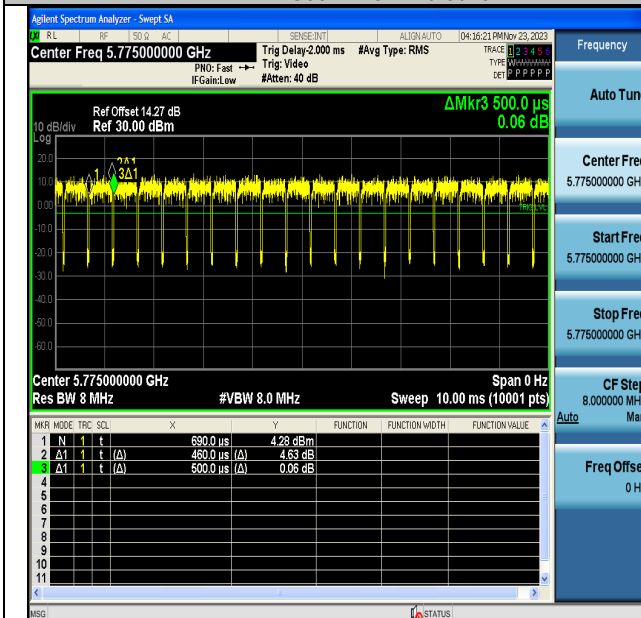
NTNV-11AC80MIMO-Ant7-5530



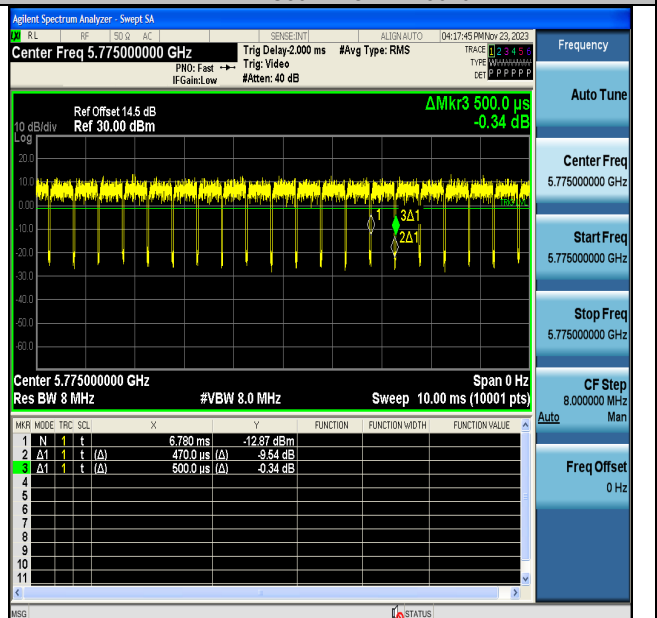
NTNV-11AC80MIMO-Ant6-5510



NTNV-11AC80MIMO-Ant7-5510



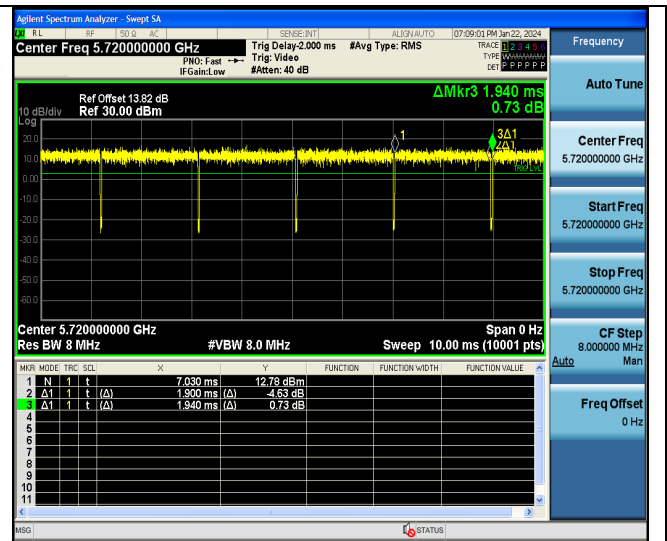
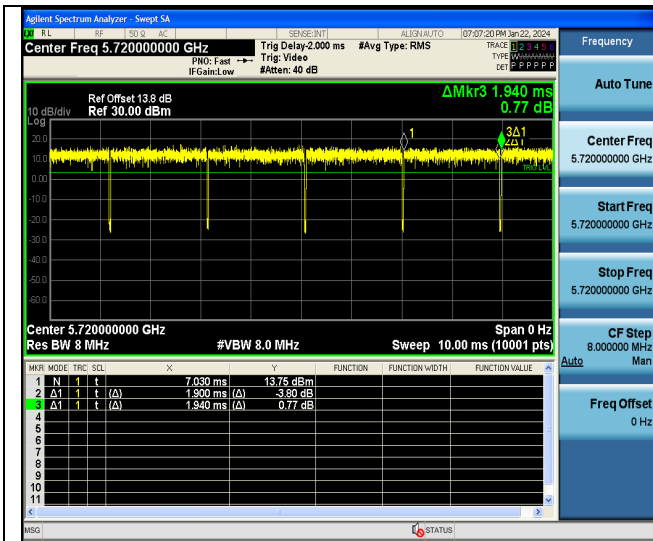
NTNV-11AC80MIMO-Ant6-5775



NTNV-11AC80MIMO-Ant7-5775

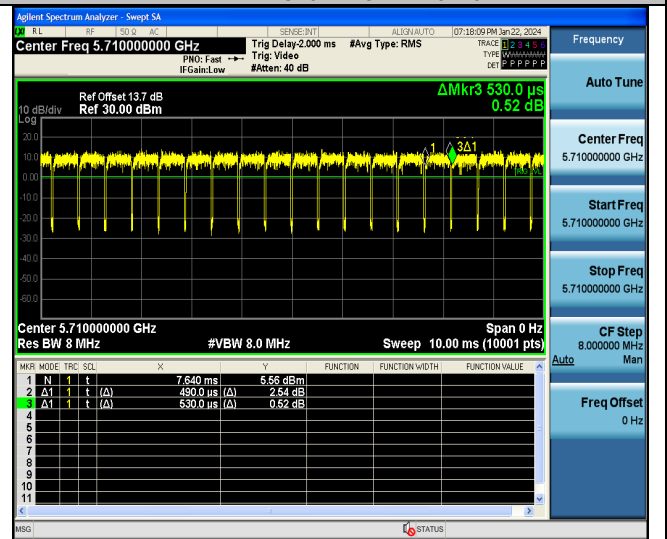
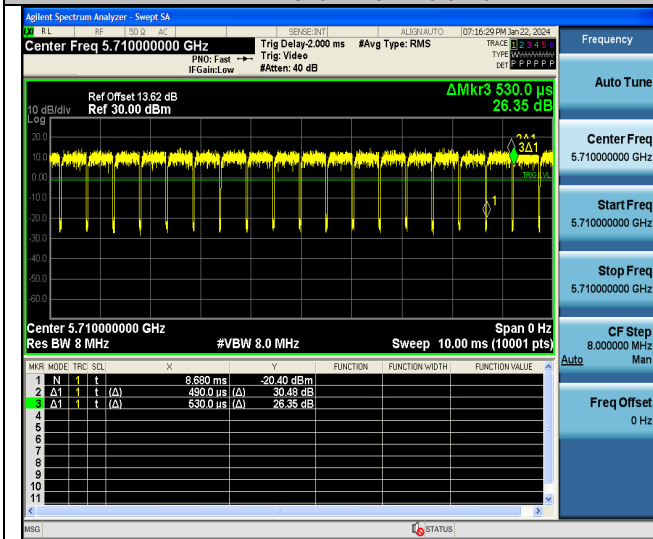
## Test Graphs Straddle Channel





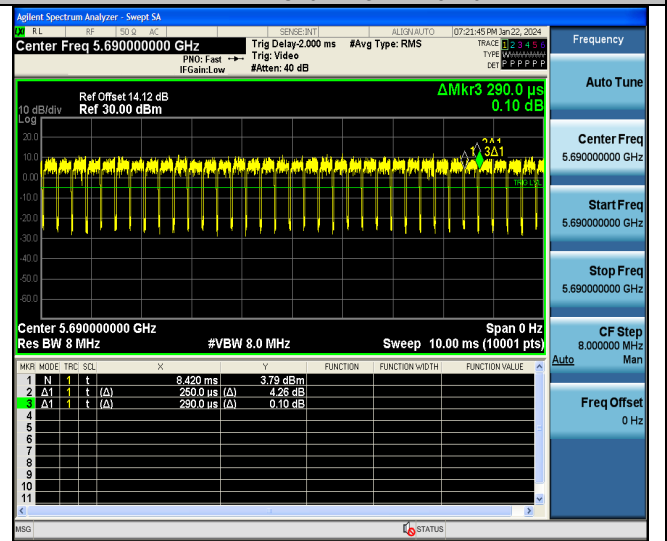
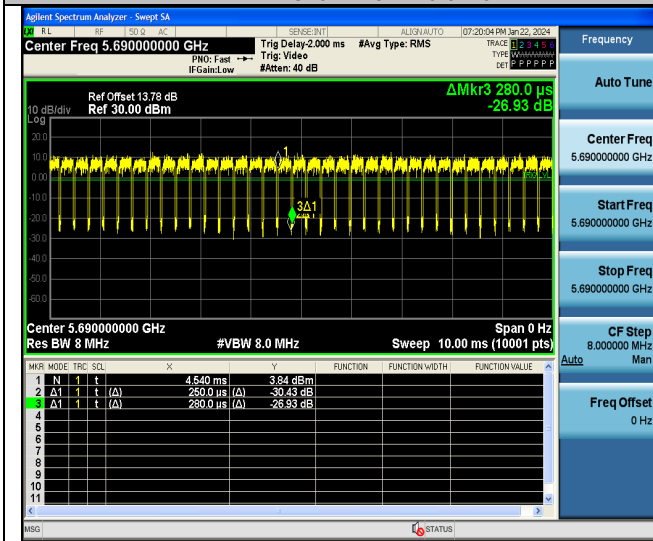
NTNV-11AC20MIMO-Ant6-5720

NTNV-11AC20MIMO-Ant7-5720



NTNV-11AC40MIMO-Ant6-5710

NTNV-11AC40MIMO-Ant7-5710



NTNV-11AC80MIMO-Ant6-5690

NTNV-11AC80MIMO-Ant7-5690

## Maximum conducted output power FCC ID: PY7-64228M (Lead Model)

### Test Result

Test Mode	Antenna	Frequency [MHz]	Result [dBm]	Limit [dBm]	Verdict
11A-CDD	Ant6	5180	9.89	≤23.98	PASS
11A-CDD	Ant7	5180	9.64	≤23.98	PASS
11A-CDD	total	5180	12.78	≤23.98	PASS
11A-CDD	Ant6	5200	10.02	≤23.98	PASS
11A-CDD	Ant7	5200	9.89	≤23.98	PASS
11A-CDD	total	5200	12.97	≤23.98	PASS
11A-CDD	Ant6	5240	10.09	≤23.98	PASS
11A-CDD	Ant7	5240	9.17	≤23.98	PASS
11A-CDD	total	5240	12.66	≤23.98	PASS
11A-CDD	Ant6	5260	9.74	≤23.98	PASS
11A-CDD	Ant7	5260	9.77	≤23.98	PASS
11A-CDD	total	5260	12.77	≤23.98	PASS
11A-CDD	Ant6	5300	10.25	≤23.98	PASS
11A-CDD	Ant7	5300	9.82	≤23.98	PASS
11A-CDD	total	5300	13.05	≤23.98	PASS
11A-CDD	Ant6	5320	10.31	≤23.98	PASS
11A-CDD	Ant7	5320	9.65	≤23.98	PASS
11A-CDD	total	5320	13.00	≤23.98	PASS
11A-CDD	Ant6	5500	9.66	≤23.98	PASS
11A-CDD	Ant7	5500	9.76	≤23.98	PASS
11A-CDD	total	5500	12.72	≤23.98	PASS
11A-CDD	Ant6	5600	9.81	≤23.98	PASS
11A-CDD	Ant7	5600	9.38	≤23.98	PASS
11A-CDD	total	5600	12.61	≤23.98	PASS
11A-CDD	Ant6	5700	9.58	≤23.98	PASS
11A-CDD	Ant7	5700	9.32	≤23.98	PASS
11A-CDD	total	5700	12.46	≤23.98	PASS
11A-CDD	Ant6	5745	10.12	≤30.00	PASS
11A-CDD	Ant7	5745	9.55	≤30.00	PASS
11A-CDD	total	5745	12.85	≤30.00	PASS
11A-CDD	Ant6	5785	10.44	≤30.00	PASS
11A-CDD	Ant7	5785	9.43	≤30.00	PASS
11A-CDD	total	5785	12.97	≤30.00	PASS
11A-CDD	Ant6	5825	10.24	≤30.00	PASS
11A-CDD	Ant7	5825	9.20	≤30.00	PASS
11A-CDD	total	5825	12.76	≤30.00	PASS
11A-CDD	Ant6	5720 UNII-2C	10.03	≤22.95	PASS
11A-CDD	Ant7	5720 UNII-2C	9.80	≤23.17	PASS
11A-CDD	total	5720 UNII-2C	12.93	≤23.98	PASS
11A-CDD	Ant6	5720 UNII-3	4.43	≤30.00	PASS
11A-CDD	Ant7	5720 UNII-3	2.87	≤30.00	PASS
11A-CDD	total	5720 UNII-3	6.73	≤30.00	PASS
11N20MIMO	Ant6	5180	9.21	≤23.98	PASS
11N20MIMO	Ant7	5180	9.32	≤23.98	PASS
11N20MIMO	total	5180	12.28	≤23.98	PASS
11N20MIMO	Ant6	5200	9.32	≤23.98	PASS
11N20MIMO	Ant7	5200	9.51	≤23.98	PASS
11N20MIMO	total	5200	12.43	≤23.98	PASS
11N20MIMO	Ant6	5240	9.39	≤23.98	PASS
11N20MIMO	Ant7	5240	9.09	≤23.98	PASS
11N20MIMO	total	5240	12.25	≤23.98	PASS
11N20MIMO	Ant6	5260	9.55	≤23.98	PASS
11N20MIMO	Ant7	5260	9.18	≤23.98	PASS
11N20MIMO	total	5260	12.38	≤23.98	PASS
11N20MIMO	Ant6	5300	10.06	≤23.98	PASS
11N20MIMO	Ant7	5300	9.21	≤23.98	PASS
11N20MIMO	total	5300	12.67	≤23.98	PASS
11N20MIMO	Ant6	5320	10.20	≤23.98	PASS
11N20MIMO	Ant7	5320	9.13	≤23.98	PASS
11N20MIMO	total	5320	12.71	≤23.98	PASS
11N20MIMO	Ant6	5500	9.97	≤23.98	PASS
11N20MIMO	Ant7	5500	9.67	≤23.98	PASS
11N20MIMO	total	5500	12.83	≤23.98	PASS
11N20MIMO	Ant6	5600	10.17	≤23.98	PASS
11N20MIMO	Ant7	5600	9.25	≤23.98	PASS

11N20MIMO	total	5600	12.74	≤23.98	PASS
11N20MIMO	Ant6	5700	9.89	≤23.98	PASS
11N20MIMO	Ant7	5700	9.23	≤23.98	PASS
11N20MIMO	total	5700	12.58	≤23.98	PASS
11N20MIMO	Ant6	5745	10.09	≤30.00	PASS
11N20MIMO	Ant7	5745	9.42	≤30.00	PASS
11N20MIMO	total	5745	12.78	≤30.00	PASS
11N20MIMO	Ant6	5785	10.29	≤30.00	PASS
11N20MIMO	Ant7	5785	9.36	≤30.00	PASS
11N20MIMO	total	5785	12.86	≤30.00	PASS
11N20MIMO	Ant6	5825	10.10	≤30.00	PASS
11N20MIMO	Ant7	5825	9.18	≤30.00	PASS
11N20MIMO	total	5825	12.67	≤30.00	PASS
11N20MIMO	Ant6	5720 UNII-2C	9.80	≤23.06	PASS
11N20MIMO	Ant7	5720 UNII-2C	9.59	≤23.30	PASS
11N20MIMO	total	5720 UNII-2C	12.71	≤23.98	PASS
11N20MIMO	Ant6	5720 UNII-3	4.73	≤30.00	PASS
11N20MIMO	Ant7	5720 UNII-3	3.19	≤30.00	PASS
11N20MIMO	total	5720 UNII-3	7.04	≤30.00	PASS
11N40MIMO	Ant6	5190	9.76	≤23.98	PASS
11N40MIMO	Ant7	5190	9.62	≤23.98	PASS
11N40MIMO	total	5190	12.70	≤23.98	PASS
11N40MIMO	Ant6	5230	9.73	≤23.98	PASS
11N40MIMO	Ant7	5230	9.51	≤23.98	PASS
11N40MIMO	total	5230	12.63	≤23.98	PASS
11N40MIMO	Ant6	5270	10.55	≤23.98	PASS
11N40MIMO	Ant7	5270	9.54	≤23.98	PASS
11N40MIMO	total	5270	13.08	≤23.98	PASS
11N40MIMO	Ant6	5310	10.67	≤23.98	PASS
11N40MIMO	Ant7	5310	9.63	≤23.98	PASS
11N40MIMO	total	5310	13.19	≤23.98	PASS
11N40MIMO	Ant6	5510	10.44	≤23.98	PASS
11N40MIMO	Ant7	5510	9.88	≤23.98	PASS
11N40MIMO	total	5510	13.18	≤23.98	PASS
11N40MIMO	Ant6	5590	10.57	≤23.98	PASS
11N40MIMO	Ant7	5590	9.65	≤23.98	PASS
11N40MIMO	total	5590	13.14	≤23.98	PASS
11N40MIMO	Ant6	5670	10.37	≤23.98	PASS
11N40MIMO	Ant7	5670	9.67	≤23.98	PASS
11N40MIMO	total	5670	13.04	≤23.98	PASS
11N40MIMO	Ant6	5755	10.58	≤30.00	PASS
11N40MIMO	Ant7	5755	9.25	≤30.00	PASS
11N40MIMO	total	5755	12.98	≤30.00	PASS
11N40MIMO	Ant6	5795	10.66	≤30.00	PASS
11N40MIMO	Ant7	5795	9.10	≤30.00	PASS
11N40MIMO	total	5795	12.96	≤30.00	PASS
11N40MIMO	Ant6	5710 UNII-2C	10.93	≤23.98	PASS
11N40MIMO	Ant7	5710 UNII-2C	10.42	≤23.98	PASS
11N40MIMO	total	5710 UNII-2C	13.69	≤23.98	PASS
11N40MIMO	Ant6	5710 UNII-3	1.24	≤30.00	PASS
11N40MIMO	Ant7	5710 UNII-3	-0.58	≤30.00	PASS
11N40MIMO	total	5710 UNII-3	3.43	≤30.00	PASS
11AC20MIMO	Ant6	5180	9.21	≤23.98	PASS
11AC20MIMO	Ant7	5180	9.94	≤23.98	PASS
11AC20MIMO	total	5180	12.60	≤23.98	PASS
11AC20MIMO	Ant6	5200	9.30	≤23.98	PASS
11AC20MIMO	Ant7	5200	10.27	≤23.98	PASS
11AC20MIMO	total	5200	12.82	≤23.98	PASS
11AC20MIMO	Ant6	5240	9.41	≤23.98	PASS
11AC20MIMO	Ant7	5240	10.38	≤23.98	PASS
11AC20MIMO	total	5240	12.93	≤23.98	PASS
11AC20MIMO	Ant6	5260	9.04	≤23.98	PASS
11AC20MIMO	Ant7	5260	9.97	≤23.98	PASS
11AC20MIMO	total	5260	12.54	≤23.98	PASS
11AC20MIMO	Ant6	5300	9.51	≤23.98	PASS
11AC20MIMO	Ant7	5300	9.85	≤23.98	PASS
11AC20MIMO	total	5300	12.69	≤23.98	PASS
11AC20MIMO	Ant6	5320	9.65	≤23.98	PASS
11AC20MIMO	Ant7	5320	9.90	≤23.98	PASS
11AC20MIMO	total	5320	12.79	≤23.98	PASS
11AC20MIMO	Ant6	5500	10.00	≤23.98	PASS
11AC20MIMO	Ant7	5500	9.58	≤23.98	PASS
11AC20MIMO	total	5500	12.81	≤23.98	PASS
11AC20MIMO	Ant6	5600	10.18	≤23.98	PASS
11AC20MIMO	Ant7	5600	9.17	≤23.98	PASS



11AC20MIMO	total	5600	12.71	≤23.98	PASS
11AC20MIMO	Ant6	5700	9.89	≤23.98	PASS
11AC20MIMO	Ant7	5700	9.14	≤23.98	PASS
11AC20MIMO	total	5700	12.54	≤23.98	PASS
11AC20MIMO	Ant6	5745	10.08	≤30.00	PASS
11AC20MIMO	Ant7	5745	9.71	≤30.00	PASS
11AC20MIMO	total	5745	12.91	≤30.00	PASS
11AC20MIMO	Ant6	5785	10.30	≤30.00	PASS
11AC20MIMO	Ant7	5785	9.53	≤30.00	PASS
11AC20MIMO	total	5785	12.94	≤30.00	PASS
11AC20MIMO	Ant6	5825	10.07	≤30.00	PASS
11AC20MIMO	Ant7	5825	9.41	≤30.00	PASS
11AC20MIMO	total	5825	12.76	≤30.00	PASS
11AC20MIMO	Ant6	5720 UNII-2C	9.81	≤23.10	PASS
11AC20MIMO	Ant7	5720 UNII-2C	9.61	≤23.27	PASS
11AC20MIMO	total	5720 UNII-2C	12.72	≤23.98	PASS
11AC20MIMO	Ant6	5720 UNII-3	4.77	≤30.00	PASS
11AC20MIMO	Ant7	5720 UNII-3	3.22	≤30.00	PASS
11AC20MIMO	total	5720 UNII-3	7.07	≤30.00	PASS
11AC40MIMO	Ant6	5190	9.74	≤23.98	PASS
11AC40MIMO	Ant7	5190	9.63	≤23.98	PASS
11AC40MIMO	total	5190	12.70	≤23.98	PASS
11AC40MIMO	Ant6	5230	9.71	≤23.98	PASS
11AC40MIMO	Ant7	5230	9.45	≤23.98	PASS
11AC40MIMO	total	5230	12.59	≤23.98	PASS
11AC40MIMO	Ant6	5270	10.04	≤23.98	PASS
11AC40MIMO	Ant7	5270	9.66	≤23.98	PASS
11AC40MIMO	total	5270	12.86	≤23.98	PASS
11AC40MIMO	Ant6	5310	9.97	≤23.98	PASS
11AC40MIMO	Ant7	5310	9.72	≤23.98	PASS
11AC40MIMO	total	5310	12.86	≤23.98	PASS
11AC40MIMO	Ant6	5510	10.48	≤23.98	PASS
11AC40MIMO	Ant7	5510	9.91	≤23.98	PASS
11AC40MIMO	total	5510	13.21	≤23.98	PASS
11AC40MIMO	Ant6	5590	10.60	≤23.98	PASS
11AC40MIMO	Ant7	5590	9.69	≤23.98	PASS
11AC40MIMO	total	5590	13.18	≤23.98	PASS
11AC40MIMO	Ant6	5670	10.34	≤23.98	PASS
11AC40MIMO	Ant7	5670	9.58	≤23.98	PASS
11AC40MIMO	total	5670	12.99	≤23.98	PASS
11AC40MIMO	Ant6	5755	10.11	≤30.00	PASS
11AC40MIMO	Ant7	5755	9.20	≤30.00	PASS
11AC40MIMO	total	5755	12.69	≤30.00	PASS
11AC40MIMO	Ant6	5795	10.19	≤30.00	PASS
11AC40MIMO	Ant7	5795	9.07	≤30.00	PASS
11AC40MIMO	total	5795	12.68	≤30.00	PASS
11AC40MIMO	Ant6	5710 UNII-2C	10.68	≤23.98	PASS
11AC40MIMO	Ant7	5710 UNII-2C	10.15	≤23.98	PASS
11AC40MIMO	total	5710 UNII-2C	13.43	≤23.98	PASS
11AC40MIMO	Ant6	5710 UNII-3	-0.23	≤30.00	PASS
11AC40MIMO	Ant7	5710 UNII-3	-0.46	≤30.00	PASS
11AC40MIMO	total	5710 UNII-3	2.67	≤30.00	PASS
11AC80MIMO	Ant6	5210	9.92	≤23.98	PASS
11AC80MIMO	Ant7	5210	9.80	≤23.98	PASS
11AC80MIMO	total	5210	12.87	≤23.98	PASS
11AC80MIMO	Ant6	5290	10.44	≤23.98	PASS
11AC80MIMO	Ant7	5290	10.09	≤23.98	PASS
11AC80MIMO	total	5290	13.28	≤23.98	PASS
11AC80MIMO	Ant6	5530	10.11	≤23.98	PASS
11AC80MIMO	Ant7	5530	10.73	≤23.98	PASS
11AC80MIMO	total	5530	13.44	≤23.98	PASS
11AC80MIMO	Ant6	5610	10.24	≤23.98	PASS
11AC80MIMO	Ant7	5610	10.55	≤23.98	PASS
11AC80MIMO	total	5610	13.41	≤23.98	PASS
11AC80MIMO	Ant6	5775	10.24	≤30.00	PASS
11AC80MIMO	Ant7	5775	10.06	≤30.00	PASS
11AC80MIMO	total	5775	13.16	≤30.00	PASS
11AC80MIMO	Ant6	5690 UNII-2C	10.74	≤23.98	PASS
11AC80MIMO	Ant7	5690 UNII-2C	10.20	≤23.98	PASS
11AC80MIMO	total	5690 UNII-2C	13.49	≤23.98	PASS
11AC80MIMO	Ant6	5690 UNII-3	-3.35	≤30.00	PASS
11AC80MIMO	Ant7	5690 UNII-3	-3.18	≤30.00	PASS
11AC80MIMO	total	5690 UNII-3	-0.25	≤30.00	PASS

Note: The Duty Cycle Factor is compensated in the graph.

**FCC ID: PY7-25130W (This Model)**

Test Mode	Antenna	Frequency [MHz]	Result [dBm]	Limit [dBm]	Verdict
11A-CDD	Ant6	5200	9.71	≤23.98	PASS
11A-CDD	Ant7	5200	9.82	≤23.98	PASS
11A-CDD	total	5200	12.78	≤23.98	PASS
11A-CDD	Ant6	5300	10.18	≤23.98	PASS
11A-CDD	Ant7	5300	9.96	≤23.98	PASS
11A-CDD	total	5300	13.08	≤23.98	PASS
11A-CDD	Ant6	5500	9.88	≤23.98	PASS
11A-CDD	Ant7	5500	10.15	≤23.98	PASS
11A-CDD	total	5500	13.03	≤23.98	PASS
11A-CDD	Ant6	5785	10.49	≤30.00	PASS
11A-CDD	Ant7	5785	9.32	≤30.00	PASS
11A-CDD	total	5785	12.95	≤30.00	PASS
11N20MIMO	Ant6	5200	9.59	≤23.98	PASS
11N20MIMO	Ant7	5200	9.30	≤23.98	PASS
11N20MIMO	total	5200	12.46	≤23.98	PASS
11N20MIMO	Ant6	5320	10.25	≤23.98	PASS
11N20MIMO	Ant7	5320	9.52	≤23.98	PASS
11N20MIMO	total	5320	12.91	≤23.98	PASS
11N20MIMO	Ant6	5500	9.76	≤23.98	PASS
11N20MIMO	Ant7	5500	9.96	≤23.98	PASS
11N20MIMO	total	5500	12.87	≤23.98	PASS
11N20MIMO	Ant6	5785	10.35	≤30.00	PASS
11N20MIMO	Ant7	5785	9.64	≤30.00	PASS
11N20MIMO	total	5785	13.02	≤30.00	PASS
11N40MIMO	Ant6	5190	9.90	≤23.98	PASS
11N40MIMO	Ant7	5190	9.27	≤23.98	PASS
11N40MIMO	total	5190	12.61	≤23.98	PASS
11N40MIMO	Ant6	5310	11.02	≤23.98	PASS
11N40MIMO	Ant7	5310	9.97	≤23.98	PASS
11N40MIMO	total	5310	13.54	≤23.98	PASS
11N40MIMO	Ant6	5510	10.73	≤23.98	PASS
11N40MIMO	Ant7	5510	10.02	≤23.98	PASS
11N40MIMO	total	5510	13.40	≤23.98	PASS
11N40MIMO	Ant6	5755	10.96	≤30.00	PASS
11N40MIMO	Ant7	5755	9.05	≤30.00	PASS
11N40MIMO	total	5755	13.12	≤30.00	PASS
11AC20MIMO	Ant6	5240	9.50	≤23.98	PASS
11AC20MIMO	Ant7	5240	10.56	≤23.98	PASS
11AC20MIMO	total	5240	13.07	≤23.98	PASS
11AC20MIMO	Ant6	5320	9.52	≤23.98	PASS
11AC20MIMO	Ant7	5320	10.00	≤23.98	PASS
11AC20MIMO	total	5320	12.78	≤23.98	PASS
11AC20MIMO	Ant6	5500	10.16	≤23.98	PASS
11AC20MIMO	Ant7	5500	9.99	≤23.98	PASS
11AC20MIMO	total	5500	13.09	≤23.98	PASS
11AC20MIMO	Ant6	5785	10.33	≤30.00	PASS
11AC20MIMO	Ant7	5785	9.66	≤30.00	PASS
11AC20MIMO	total	5785	13.02	≤30.00	PASS
11AC40MIMO	Ant6	5190	9.89	≤23.98	PASS
11AC40MIMO	Ant7	5190	9.35	≤23.98	PASS
11AC40MIMO	total	5190	12.64	≤23.98	PASS
11AC40MIMO	Ant6	5270	10.14	≤23.98	PASS
11AC40MIMO	Ant7	5270	10.11	≤23.98	PASS
11AC40MIMO	total	5270	13.14	≤23.98	PASS
11AC40MIMO	Ant6	5510	10.24	≤23.98	PASS
11AC40MIMO	Ant7	5510	10.31	≤23.98	PASS
11AC40MIMO	total	5510	13.29	≤23.98	PASS
11AC40MIMO	Ant6	5755	10.42	≤30.00	PASS
11AC40MIMO	Ant7	5755	9.46	≤30.00	PASS
11AC40MIMO	total	5755	12.98	≤30.00	PASS
11AC80MIMO	Ant6	5210	9.59	≤23.98	PASS
11AC80MIMO	Ant7	5210	9.39	≤23.98	PASS
11AC80MIMO	total	5210	12.50	≤23.98	PASS
11AC80MIMO	Ant6	5290	10.47	≤23.98	PASS
11AC80MIMO	Ant7	5290	10.38	≤23.98	PASS
11AC80MIMO	total	5290	13.44	≤23.98	PASS
11AC80MIMO	Ant6	5530	9.84	≤23.98	PASS
11AC80MIMO	Ant7	5530	10.55	≤23.98	PASS
11AC80MIMO	total	5530	13.22	≤23.98	PASS
11AC80MIMO	Ant6	5775	10.05	≤30.00	PASS



11AC80MIMO	Ant7	5775	10.14	≤30.00	PASS
11AC80MIMO	total	5775	13.11	≤30.00	PASS

Note: The Duty Cycle Factor is compensated in the graph.

## Maximum power spectral density Test Result

TestMode	Antenna	Frequency[MHz]	Result [dBm/MHz]	Limit[dBm/MHz]	Verdict
11A-CDD	Ant6	5180	0.04	≤11.00	PASS
11A-CDD	Ant7	5180	-0.56	≤11.00	PASS
11A-CDD	total	5180	2.76	≤11.00	PASS
11A-CDD	Ant6	5200	-0.62	≤11.00	PASS
11A-CDD	Ant7	5200	-0.80	≤11.00	PASS
11A-CDD	total	5200	2.30	≤11.00	PASS
11A-CDD	Ant6	5240	-0.93	≤11.00	PASS
11A-CDD	Ant7	5240	-0.78	≤11.00	PASS
11A-CDD	total	5240	2.16	≤11.00	PASS
11A-CDD	Ant6	5260	-0.93	≤11.00	PASS
11A-CDD	Ant7	5260	-0.56	≤11.00	PASS
11A-CDD	total	5260	2.27	≤11.00	PASS
11A-CDD	Ant6	5300	-0.79	≤11.00	PASS
11A-CDD	Ant7	5300	-0.15	≤11.00	PASS
11A-CDD	total	5300	2.55	≤11.00	PASS
11A-CDD	Ant6	5320	-1.40	≤11.00	PASS
11A-CDD	Ant7	5320	-0.98	≤11.00	PASS
11A-CDD	total	5320	1.83	≤11.00	PASS
11A-CDD	Ant6	5500	-1.03	≤11.00	PASS
11A-CDD	Ant7	5500	-0.24	≤11.00	PASS
11A-CDD	total	5500	2.39	≤11.00	PASS
11A-CDD	Ant6	5600	-0.90	≤11.00	PASS
11A-CDD	Ant7	5600	-0.50	≤11.00	PASS
11A-CDD	total	5600	2.31	≤11.00	PASS
11A-CDD	Ant6	5700	-1.22	≤11.00	PASS
11A-CDD	Ant7	5700	-1.46	≤11.00	PASS
11A-CDD	total	5700	1.67	≤11.00	PASS
11A-CDD	Ant6	5745	-4.14	≤30.00	PASS
11A-CDD	Ant7	5745	-3.73	≤30.00	PASS
11A-CDD	total	5745	-0.92	≤30.00	PASS
11A-CDD	Ant6	5785	-3.46	≤30.00	PASS
11A-CDD	Ant7	5785	-3.71	≤30.00	PASS
11A-CDD	total	5785	-0.57	≤30.00	PASS
11A-CDD	Ant6	5825	-3.80	≤30.00	PASS
11A-CDD	Ant7	5825	-3.71	≤30.00	PASS
11A-CDD	total	5825	-0.74	≤30.00	PASS
11A-CDD	Ant6	5720 UNII-2C	0.61	≤11.00	PASS
11A-CDD	Ant7	5720 UNII-2C	0.00	≤11.00	PASS
11A-CDD	total	5720 UNII-2C	3.33	≤11.00	PASS
11A-CDD	Ant6	5720 UNII-3	-2.70	≤30.00	PASS
11A-CDD	Ant7	5720 UNII-3	-4.21	≤30.00	PASS
11A-CDD	total	5720 UNII-3	-0.38	≤30.00	PASS
11N20MIMO	Ant6	5180	-1.95	≤11.00	PASS
11N20MIMO	Ant7	5180	-1.67	≤11.00	PASS
11N20MIMO	total	5180	1.20	≤11.00	PASS
11N20MIMO	Ant6	5200	-1.87	≤11.00	PASS
11N20MIMO	Ant7	5200	-1.39	≤11.00	PASS
11N20MIMO	total	5200	1.39	≤11.00	PASS
11N20MIMO	Ant6	5240	-1.94	≤11.00	PASS
11N20MIMO	Ant7	5240	-1.54	≤11.00	PASS
11N20MIMO	total	5240	1.27	≤11.00	PASS
11N20MIMO	Ant6	5260	-1.84	≤11.00	PASS
11N20MIMO	Ant7	5260	-1.07	≤11.00	PASS
11N20MIMO	total	5260	1.57	≤11.00	PASS
11N20MIMO	Ant6	5300	-1.46	≤11.00	PASS
11N20MIMO	Ant7	5300	-0.88	≤11.00	PASS
11N20MIMO	total	5300	1.85	≤11.00	PASS
11N20MIMO	Ant6	5320	-1.51	≤11.00	PASS
11N20MIMO	Ant7	5320	-1.42	≤11.00	PASS
11N20MIMO	total	5320	1.55	≤11.00	PASS
11N20MIMO	Ant6	5500	-0.56	≤11.00	PASS
11N20MIMO	Ant7	5500	-0.22	≤11.00	PASS
11N20MIMO	total	5500	2.62	≤11.00	PASS
11N20MIMO	Ant6	5600	-0.36	≤11.00	PASS
11N20MIMO	Ant7	5600	-0.62	≤11.00	PASS
11N20MIMO	total	5600	2.52	≤11.00	PASS
11N20MIMO	Ant6	5700	-1.67	≤11.00	PASS
11N20MIMO	Ant7	5700	-1.11	≤11.00	PASS

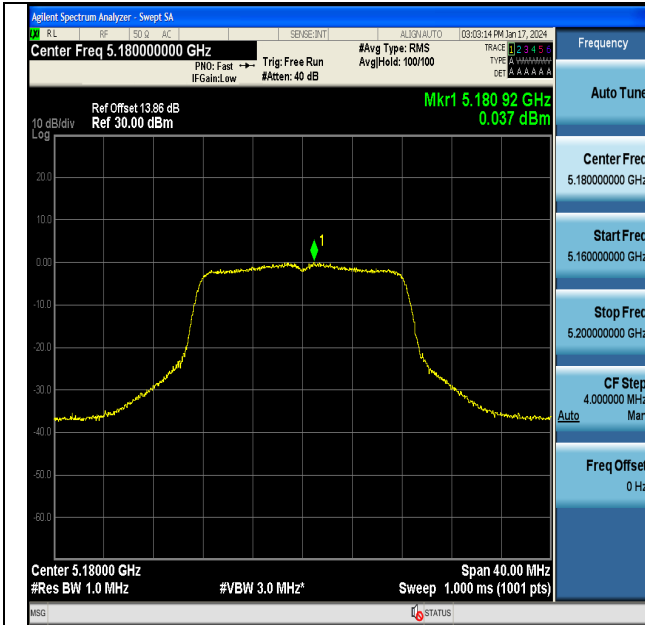
11N20MIMO	total	5700	1.63	≤11.00	PASS
11N20MIMO	Ant6	5745	-4.92	≤30.00	PASS
11N20MIMO	Ant7	5745	-4.24	≤30.00	PASS
11N20MIMO	total	5745	-1.56	≤30.00	PASS
11N20MIMO	Ant6	5785	-3.73	≤30.00	PASS
11N20MIMO	Ant7	5785	-4.28	≤30.00	PASS
11N20MIMO	total	5785	-0.99	≤30.00	PASS
11N20MIMO	Ant6	5825	-3.40	≤30.00	PASS
11N20MIMO	Ant7	5825	-4.30	≤30.00	PASS
11N20MIMO	total	5825	-0.82	≤30.00	PASS
11N20MIMO	Ant6	5720 UNII-2C	0.16	≤11.00	PASS
11N20MIMO	Ant7	5720 UNII-2C	-0.27	≤11.00	PASS
11N20MIMO	total	5720 UNII-2C	2.96	≤11.00	PASS
11N20MIMO	Ant6	5720 UNII-3	-3.06	≤30.00	PASS
11N20MIMO	Ant7	5720 UNII-3	-4.75	≤30.00	PASS
11N20MIMO	total	5720 UNII-3	-0.81	≤30.00	PASS
11N40MIMO	Ant6	5190	-3.94	≤11.00	PASS
11N40MIMO	Ant7	5190	-4.34	≤11.00	PASS
11N40MIMO	total	5190	-1.13	≤11.00	PASS
11N40MIMO	Ant6	5230	-4.21	≤11.00	PASS
11N40MIMO	Ant7	5230	-3.98	≤11.00	PASS
11N40MIMO	total	5230	-1.08	≤11.00	PASS
11N40MIMO	Ant6	5270	-3.02	≤11.00	PASS
11N40MIMO	Ant7	5270	-3.52	≤11.00	PASS
11N40MIMO	total	5270	-0.25	≤11.00	PASS
11N40MIMO	Ant6	5310	-3.83	≤11.00	PASS
11N40MIMO	Ant7	5310	-3.25	≤11.00	PASS
11N40MIMO	total	5310	-0.52	≤11.00	PASS
11N40MIMO	Ant6	5510	-3.52	≤11.00	PASS
11N40MIMO	Ant7	5510	-3.16	≤11.00	PASS
11N40MIMO	total	5510	-0.33	≤11.00	PASS
11N40MIMO	Ant6	5590	-3.02	≤11.00	PASS
11N40MIMO	Ant7	5590	-3.63	≤11.00	PASS
11N40MIMO	total	5590	-0.30	≤11.00	PASS
11N40MIMO	Ant6	5670	-3.40	≤11.00	PASS
11N40MIMO	Ant7	5670	-3.78	≤11.00	PASS
11N40MIMO	total	5670	-0.58	≤11.00	PASS
11N40MIMO	Ant6	5755	-6.59	≤30.00	PASS
11N40MIMO	Ant7	5755	-7.00	≤30.00	PASS
11N40MIMO	total	5755	-3.78	≤30.00	PASS
11N40MIMO	Ant6	5795	-6.97	≤30.00	PASS
11N40MIMO	Ant7	5795	-7.20	≤30.00	PASS
11N40MIMO	total	5795	-4.07	≤30.00	PASS
11N40MIMO	Ant6	5710 UNII-2C	-2.10	≤11.00	PASS
11N40MIMO	Ant7	5710 UNII-2C	-2.98	≤11.00	PASS
11N40MIMO	total	5710 UNII-2C	0.49	≤11.00	PASS
11N40MIMO	Ant6	5710 UNII-3	-5.98	≤30.00	PASS
11N40MIMO	Ant7	5710 UNII-3	-7.85	≤30.00	PASS
11N40MIMO	total	5710 UNII-3	-3.80	≤30.00	PASS
11AC20MIMO	Ant6	5180	-1.09	≤11.00	PASS
11AC20MIMO	Ant7	5180	-1.72	≤11.00	PASS
11AC20MIMO	total	5180	1.62	≤11.00	PASS
11AC20MIMO	Ant6	5200	-1.40	≤11.00	PASS
11AC20MIMO	Ant7	5200	-1.68	≤11.00	PASS
11AC20MIMO	total	5200	1.47	≤11.00	PASS
11AC20MIMO	Ant6	5240	-1.93	≤11.00	PASS
11AC20MIMO	Ant7	5240	-1.65	≤11.00	PASS
11AC20MIMO	total	5240	1.22	≤11.00	PASS
11AC20MIMO	Ant6	5260	-1.68	≤11.00	PASS
11AC20MIMO	Ant7	5260	-1.51	≤11.00	PASS
11AC20MIMO	total	5260	1.42	≤11.00	PASS
11AC20MIMO	Ant6	5300	-2.10	≤11.00	PASS
11AC20MIMO	Ant7	5300	-1.52	≤11.00	PASS
11AC20MIMO	total	5300	1.21	≤11.00	PASS
11AC20MIMO	Ant6	5320	-2.12	≤11.00	PASS
11AC20MIMO	Ant7	5320	-1.74	≤11.00	PASS
11AC20MIMO	total	5320	1.08	≤11.00	PASS
11AC20MIMO	Ant6	5500	-0.96	≤11.00	PASS
11AC20MIMO	Ant7	5500	-0.48	≤11.00	PASS
11AC20MIMO	total	5500	2.30	≤11.00	PASS
11AC20MIMO	Ant6	5600	-1.06	≤11.00	PASS
11AC20MIMO	Ant7	5600	-0.60	≤11.00	PASS
11AC20MIMO	total	5600	2.19	≤11.00	PASS
11AC20MIMO	Ant6	5700	-1.28	≤11.00	PASS
11AC20MIMO	Ant7	5700	-1.51	≤11.00	PASS

11AC20MIMO	total	5700	1.62	≤11.00	PASS
11AC20MIMO	Ant6	5745	-4.24	≤30.00	PASS
11AC20MIMO	Ant7	5745	-4.45	≤30.00	PASS
11AC20MIMO	total	5745	-1.33	≤30.00	PASS
11AC20MIMO	Ant6	5785	-3.56	≤30.00	PASS
11AC20MIMO	Ant7	5785	-4.32	≤30.00	PASS
11AC20MIMO	total	5785	-0.91	≤30.00	PASS
11AC20MIMO	Ant6	5825	-4.66	≤30.00	PASS
11AC20MIMO	Ant7	5825	-4.47	≤30.00	PASS
11AC20MIMO	total	5825	-1.55	≤30.00	PASS
11AC20MIMO	Ant6	5720 UNII-2C	0.38	≤11.00	PASS
11AC20MIMO	Ant7	5720 UNII-2C	0.01	≤11.00	PASS
11AC20MIMO	total	5720 UNII-2C	3.21	≤11.00	PASS
11AC20MIMO	Ant6	5720 UNII-3	-3.23	≤30.00	PASS
11AC20MIMO	Ant7	5720 UNII-3	-4.54	≤30.00	PASS
11AC20MIMO	total	5720 UNII-3	-0.83	≤30.00	PASS
11AC40MIMO	Ant6	5190	-4.02	≤11.00	PASS
11AC40MIMO	Ant7	5190	-4.53	≤11.00	PASS
11AC40MIMO	total	5190	-1.26	≤11.00	PASS
11AC40MIMO	Ant6	5230	-5.23	≤11.00	PASS
11AC40MIMO	Ant7	5230	-3.94	≤11.00	PASS
11AC40MIMO	total	5230	-1.53	≤11.00	PASS
11AC40MIMO	Ant6	5270	-4.46	≤11.00	PASS
11AC40MIMO	Ant7	5270	-3.78	≤11.00	PASS
11AC40MIMO	total	5270	-1.10	≤11.00	PASS
11AC40MIMO	Ant6	5310	-3.96	≤11.00	PASS
11AC40MIMO	Ant7	5310	-3.63	≤11.00	PASS
11AC40MIMO	total	5310	-0.78	≤11.00	PASS
11AC40MIMO	Ant6	5510	-4.08	≤11.00	PASS
11AC40MIMO	Ant7	5510	-3.25	≤11.00	PASS
11AC40MIMO	total	5510	-0.63	≤11.00	PASS
11AC40MIMO	Ant6	5590	-4.07	≤11.00	PASS
11AC40MIMO	Ant7	5590	-3.46	≤11.00	PASS
11AC40MIMO	total	5590	-0.74	≤11.00	PASS
11AC40MIMO	Ant6	5670	-3.83	≤11.00	PASS
11AC40MIMO	Ant7	5670	-3.76	≤11.00	PASS
11AC40MIMO	total	5670	-0.78	≤11.00	PASS
11AC40MIMO	Ant6	5755	-7.62	≤30.00	PASS
11AC40MIMO	Ant7	5755	-7.76	≤30.00	PASS
11AC40MIMO	total	5755	-4.68	≤30.00	PASS
11AC40MIMO	Ant6	5795	-7.82	≤30.00	PASS
11AC40MIMO	Ant7	5795	-7.51	≤30.00	PASS
11AC40MIMO	total	5795	-4.65	≤30.00	PASS
11AC40MIMO	Ant6	5710 UNII-2C	-2.44	≤11.00	PASS
11AC40MIMO	Ant7	5710 UNII-2C	-3.00	≤11.00	PASS
11AC40MIMO	total	5710 UNII-2C	0.30	≤11.00	PASS
11AC40MIMO	Ant6	5710 UNII-3	-6.97	≤30.00	PASS
11AC40MIMO	Ant7	5710 UNII-3	-7.48	≤30.00	PASS
11AC40MIMO	total	5710 UNII-3	-4.21	≤30.00	PASS
11AC80MIMO	Ant6	5210	-6.75	≤11.00	PASS
11AC80MIMO	Ant7	5210	-6.89	≤11.00	PASS
11AC80MIMO	total	5210	-3.81	≤11.00	PASS
11AC80MIMO	Ant6	5290	-6.54	≤11.00	PASS
11AC80MIMO	Ant7	5290	-6.61	≤11.00	PASS
11AC80MIMO	total	5290	-3.56	≤11.00	PASS
11AC80MIMO	Ant6	5530	-6.75	≤11.00	PASS
11AC80MIMO	Ant7	5530	-6.95	≤11.00	PASS
11AC80MIMO	total	5530	-3.84	≤11.00	PASS
11AC80MIMO	Ant6	5610	-6.66	≤11.00	PASS
11AC80MIMO	Ant7	5610	-7.06	≤11.00	PASS
11AC80MIMO	total	5610	-3.85	≤11.00	PASS
11AC80MIMO	Ant6	5775	-9.68	≤30.00	PASS
11AC80MIMO	Ant7	5775	-10.59	≤30.00	PASS
11AC80MIMO	total	5775	-7.10	≤30.00	PASS
11AC80MIMO	Ant6	5690 UNII-2C	-5.15	≤11.00	PASS
11AC80MIMO	Ant7	5690 UNII-2C	-5.69	≤11.00	PASS
11AC80MIMO	total	5690 UNII-2C	-2.40	≤11.00	PASS
11AC80MIMO	Ant6	5690 UNII-3	-9.86	≤30.00	PASS
11AC80MIMO	Ant7	5690 UNII-3	-9.44	≤30.00	PASS
11AC80MIMO	total	5690 UNII-3	-6.63	≤30.00	PASS

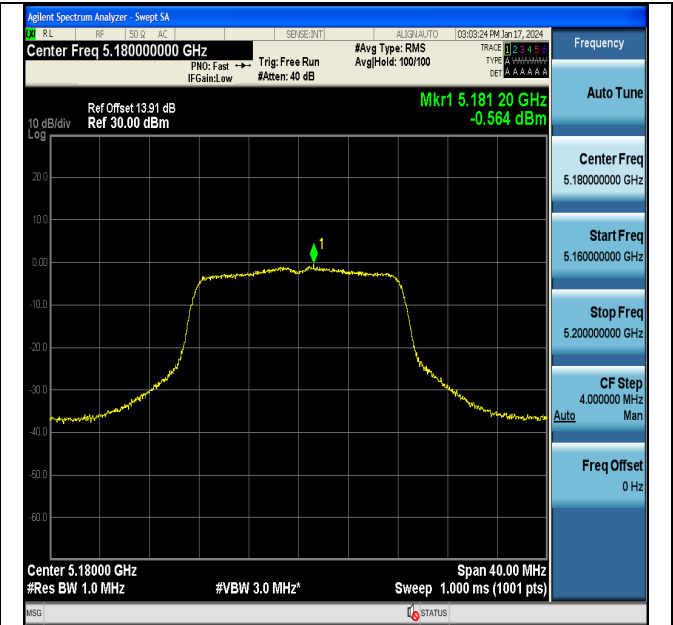
Note: 1.The Result and Limit Unit is dBm/500 kHz in the band 5.725–5.85 GHz.

2.The Duty Cycle Factor and RBW Factor is compensated in the graph.

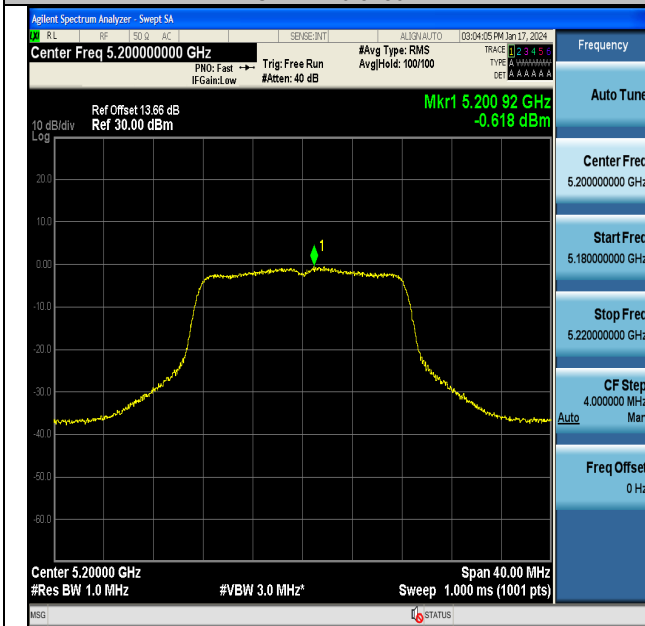
## Test Graphs



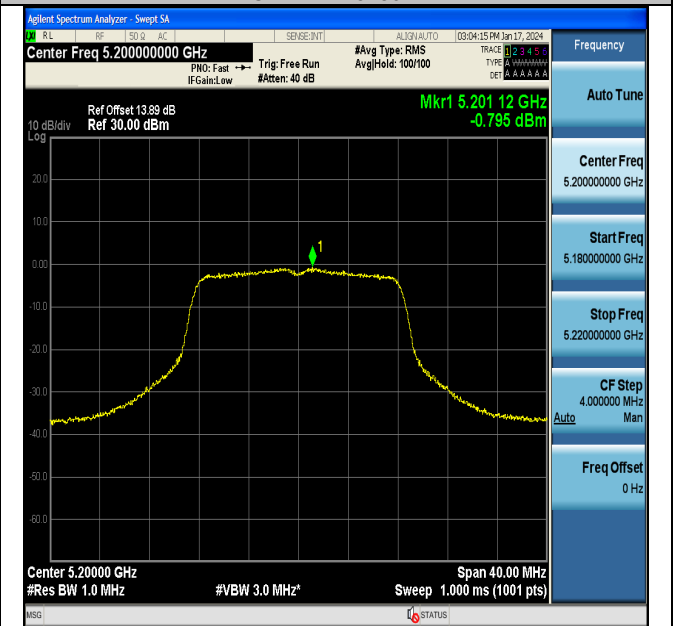
11A-CDD-Ant6-5180-PASS



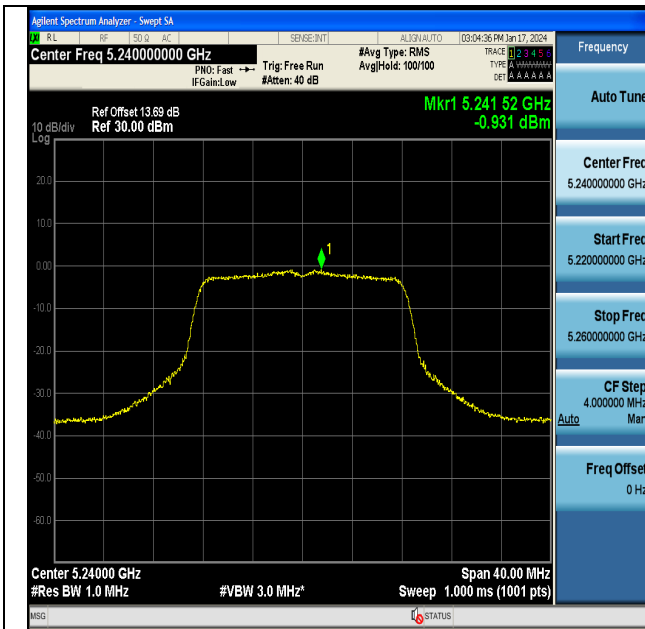
11A-CDD-Ant7-5180-PASS



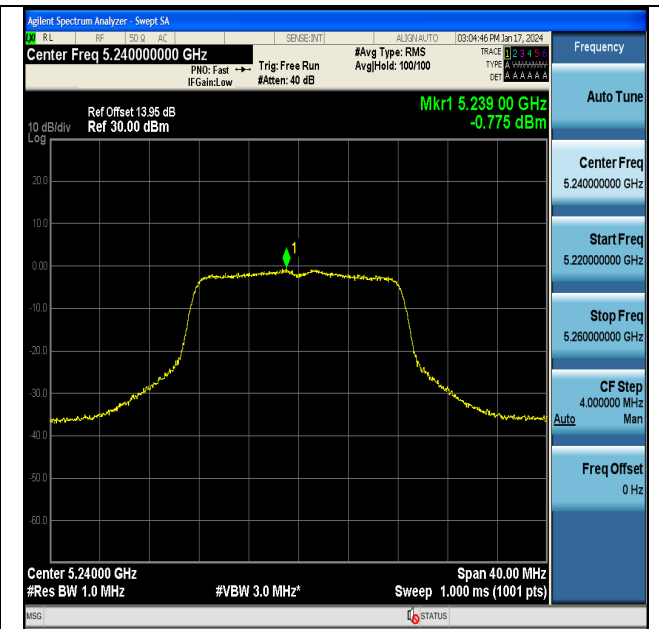
11A-CDD-Ant6-5200-PASS



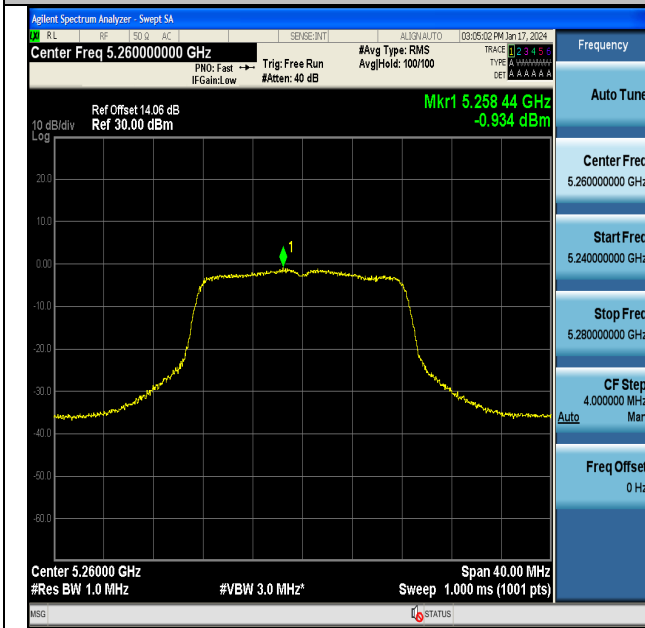
11A-CDD-Ant7-5200-PASS



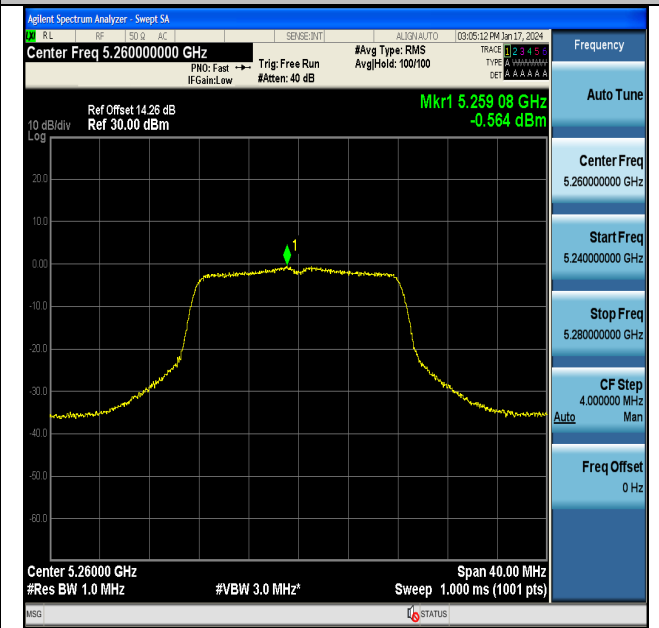
11A-CDD-Ant6-5240-PASS



11A-CDD-Ant7-5240-PASS

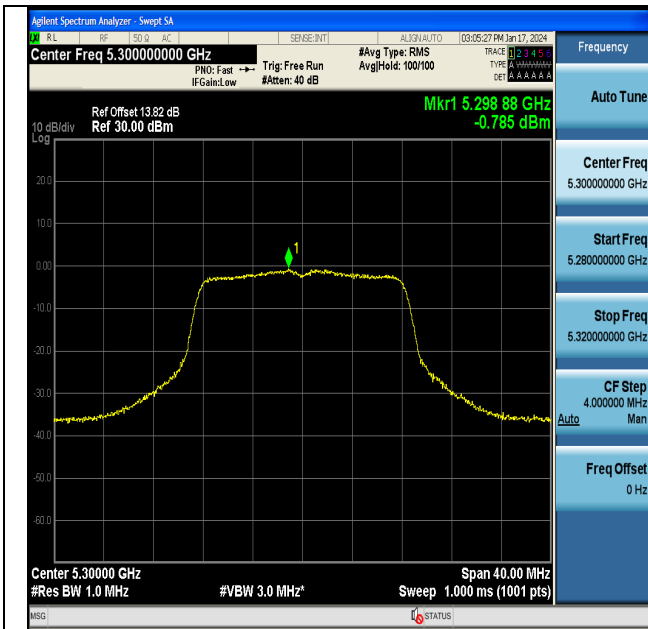


11A-CDD-Ant6-5260-PASS

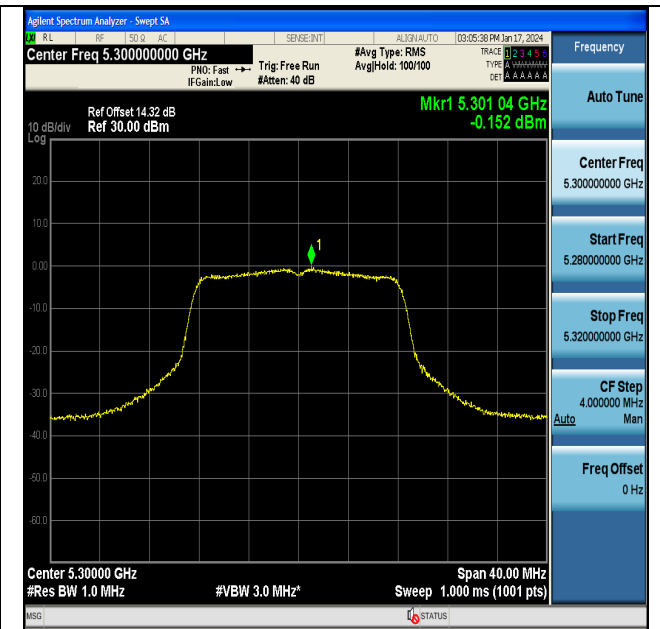


11A-CDD-Ant7-5260-PASS

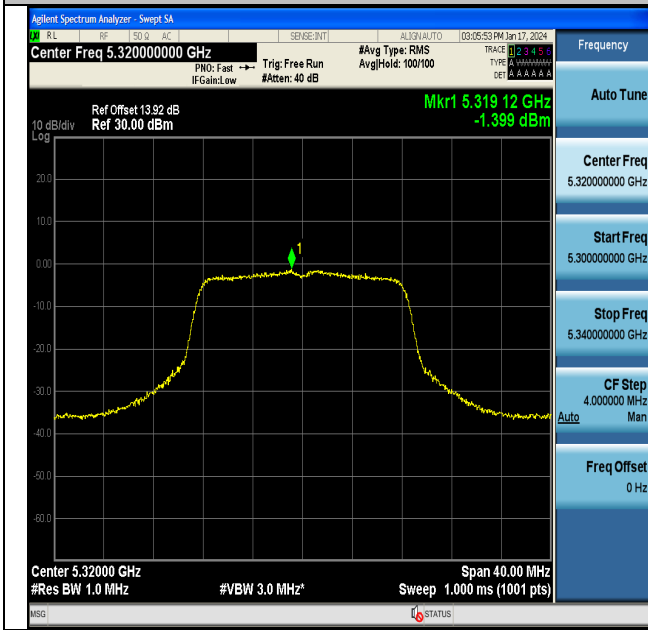




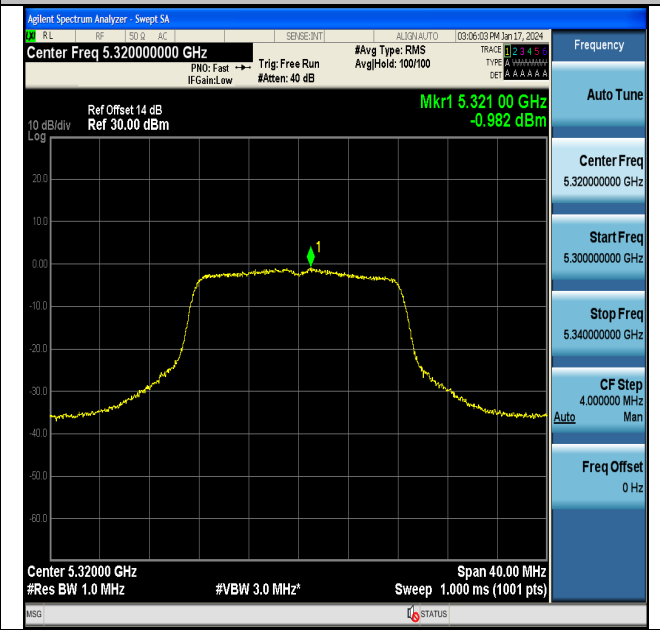
11A-CDD-Ant6-5300-PASS



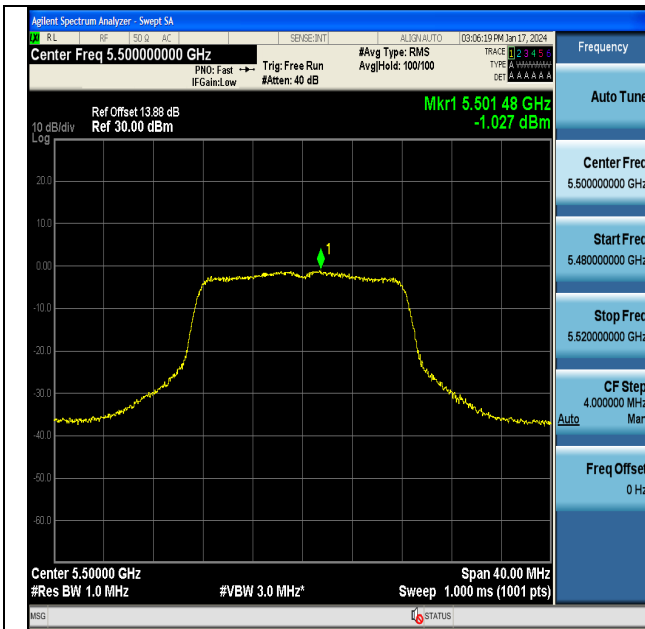
11A-CDD-Ant7-5300-PASS



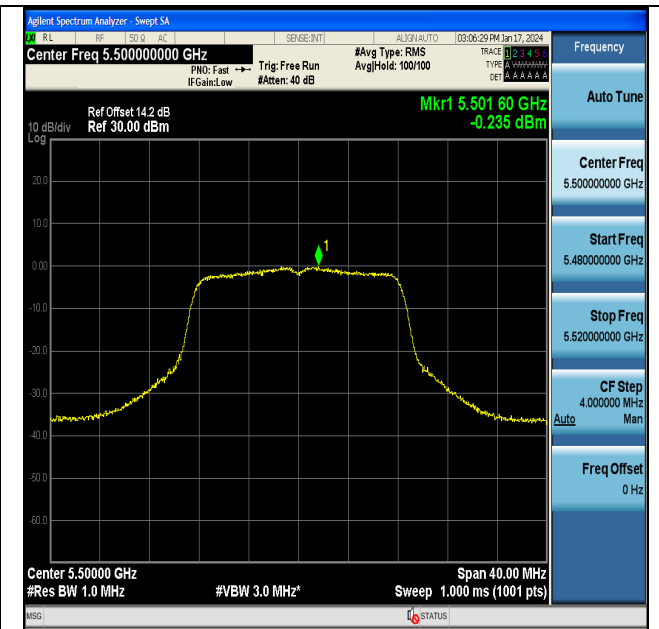
11A-CDD-Ant6-5320-PASS



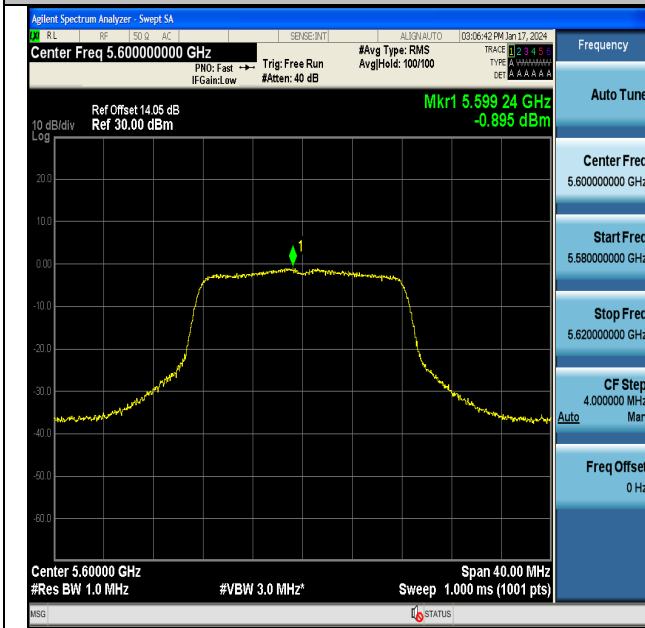
11A-CDD-Ant7-5320-PASS



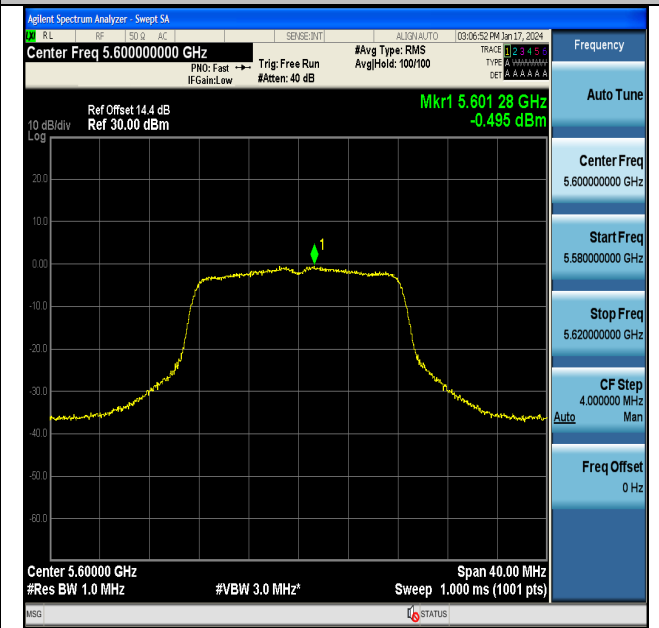
11A-CDD-Ant6-5500-PASS



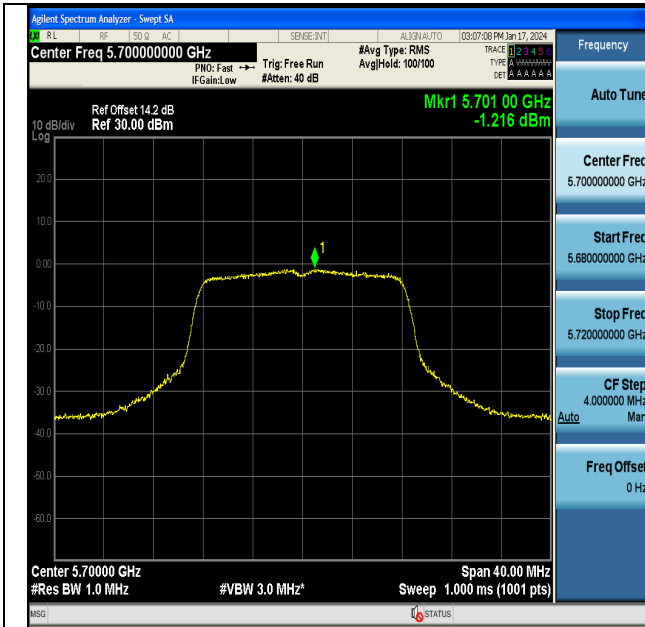
11A-CDD-Ant7-5500-PASS



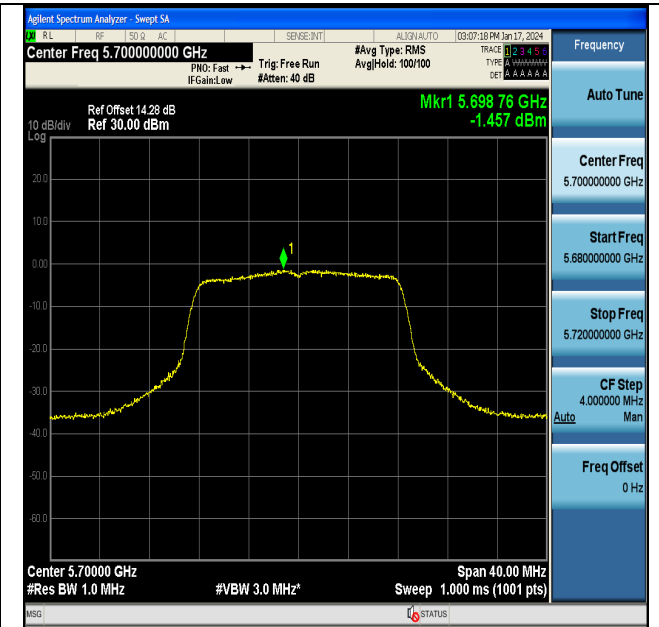
11A-CDD-Ant6-5600-PASS



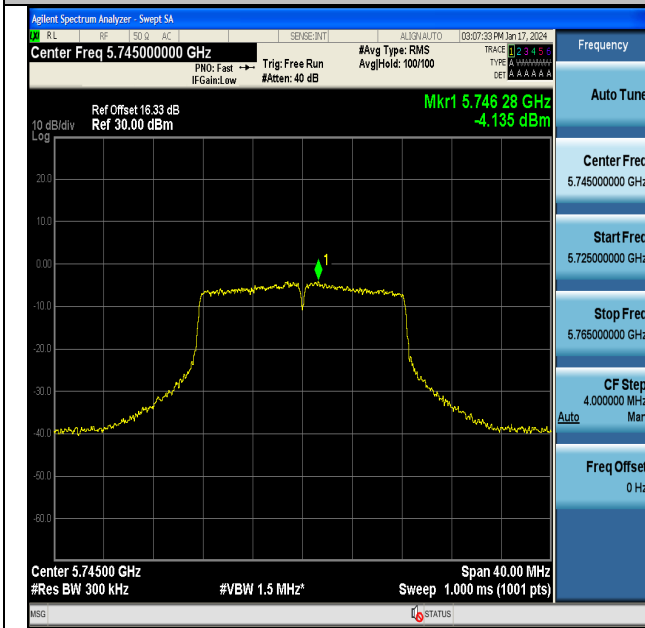
11A-CDD-Ant7-5600-PASS



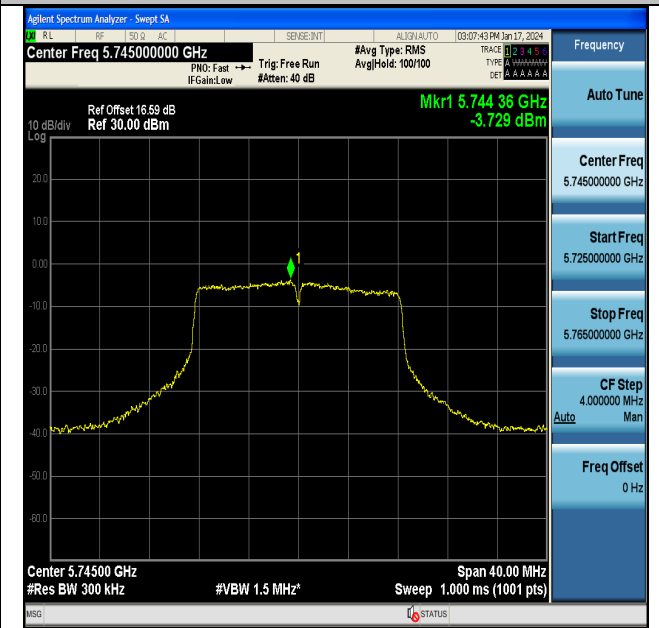
11A-CDD-Ant6-5700-PASS



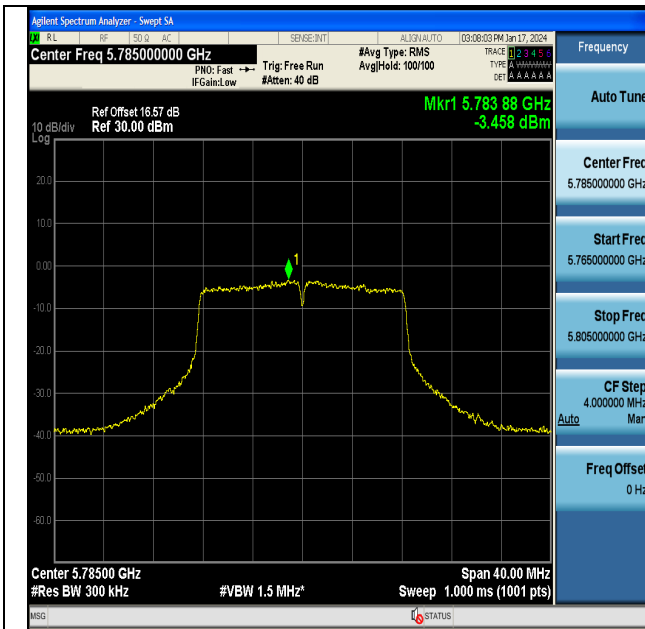
11A-CDD-Ant7-5700-PASS



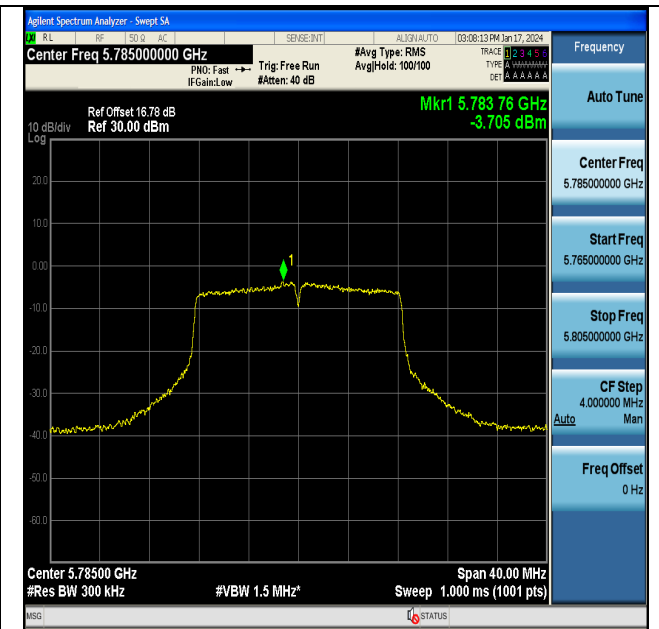
11A-CDD-Ant6-5745-PASS



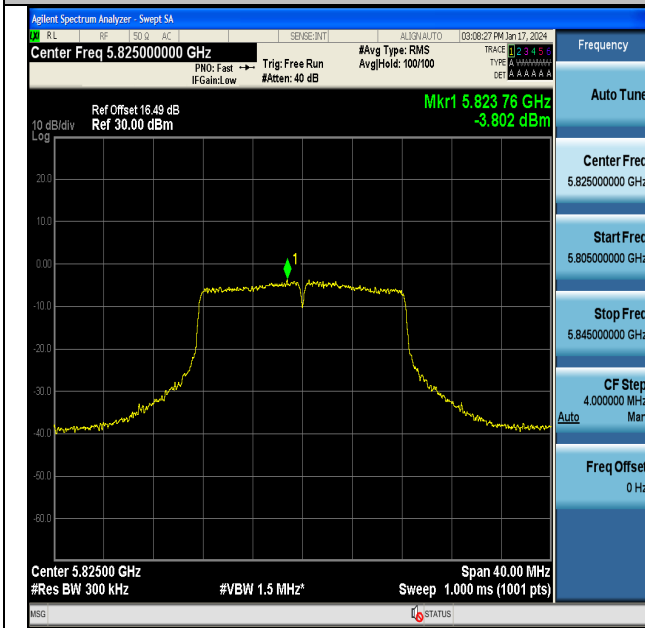
11A-CDD-Ant7-5745-PASS



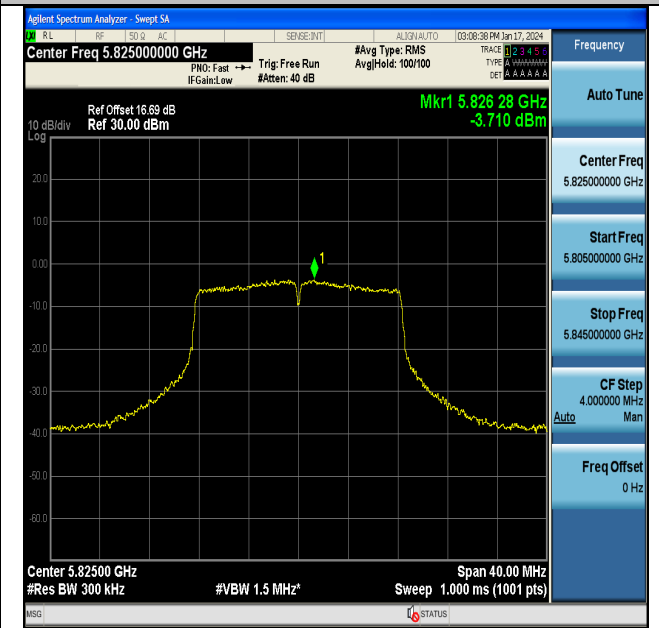
11A-CDD-Ant6-5785-PASS



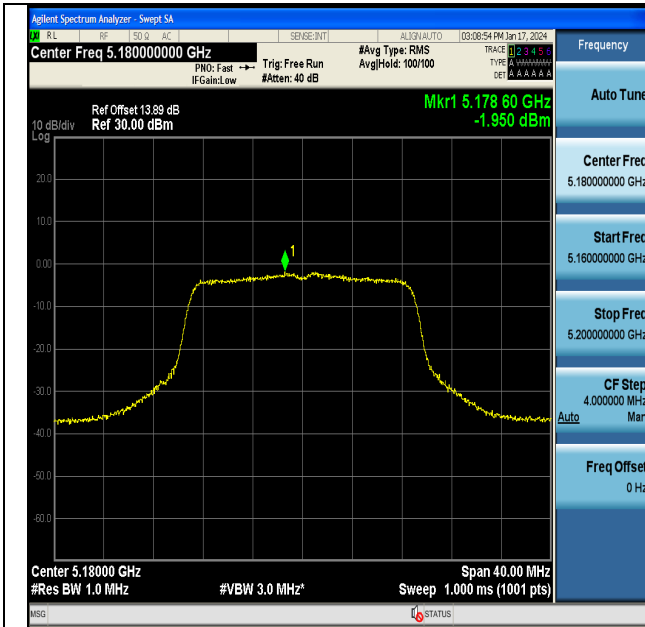
11A-CDD-Ant7-5785-PASS



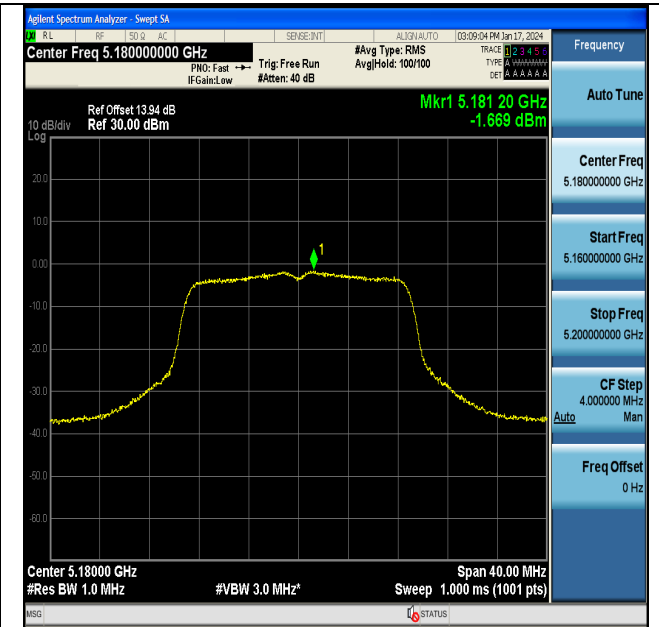
11A-CDD-Ant6-5825-PASS



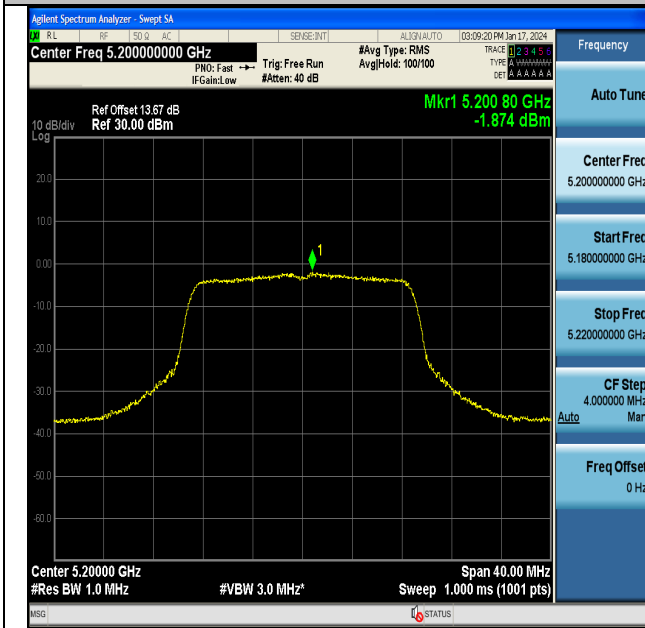
11A-CDD-Ant7-5825-PASS



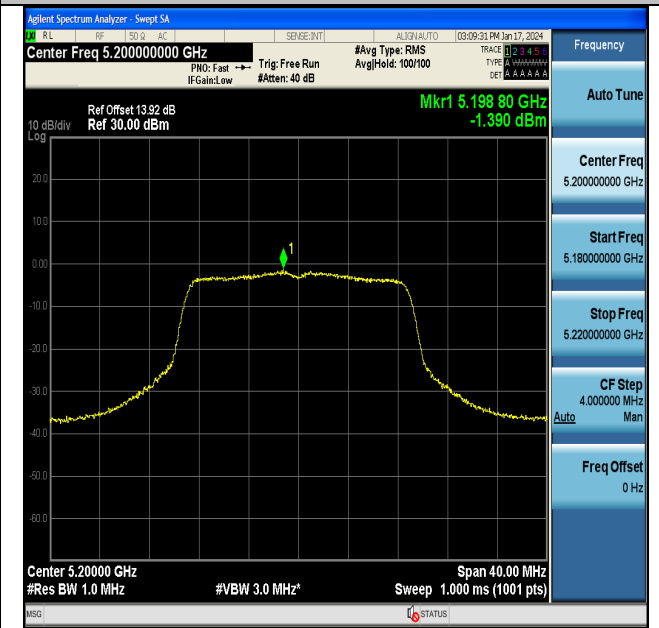
11N20MIMO-Ant6-5180-PASS



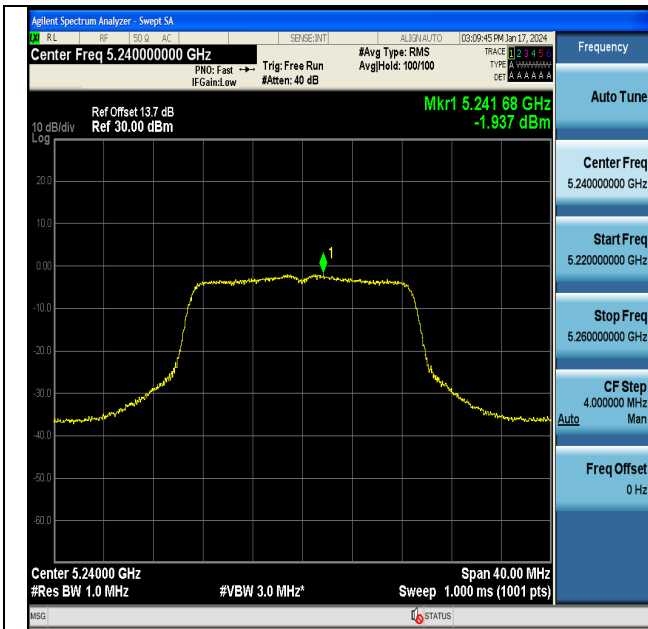
11N20MIMO-Ant7-5180-PASS



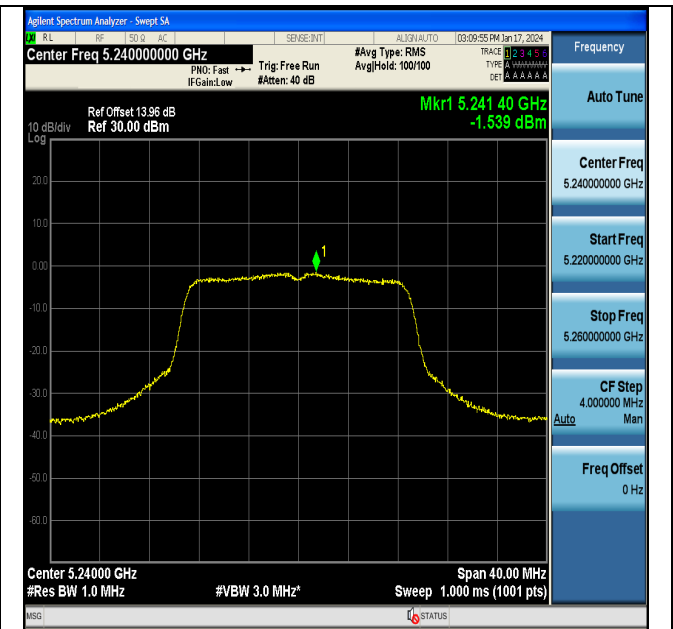
11N20MIMO-Ant6-5200-PASS



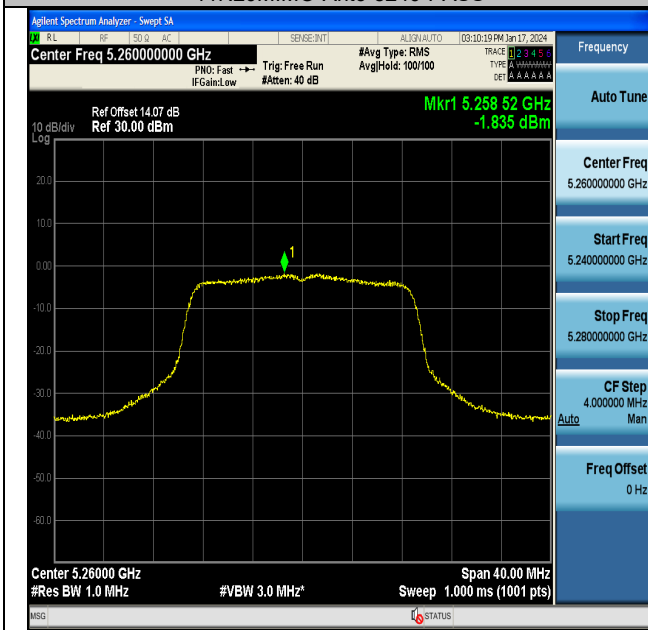
11N20MIMO-Ant7-5200-PASS



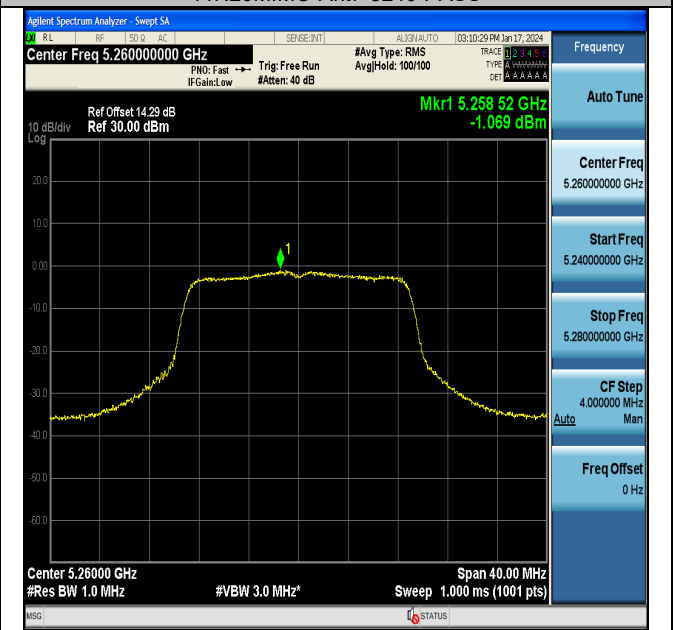
11N20MIMO-Ant6-5240-PASS



11N20MIMO-Ant7-5240-PASS

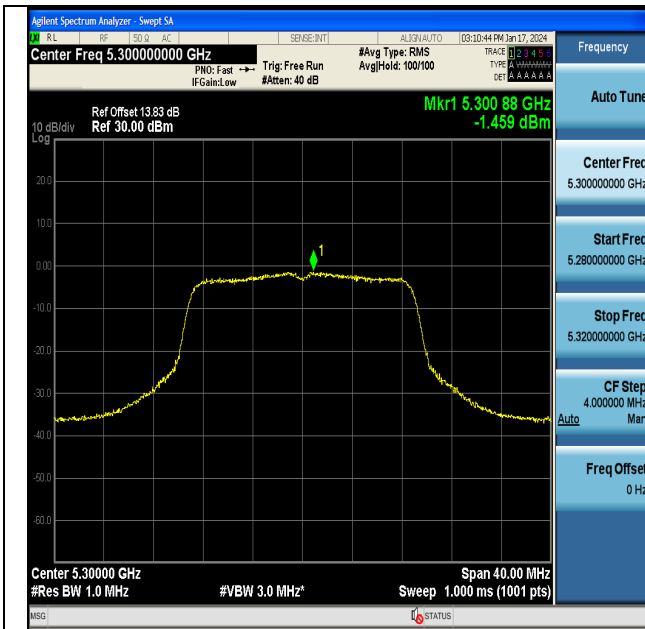


11N20MIMO-Ant6-5260-PASS

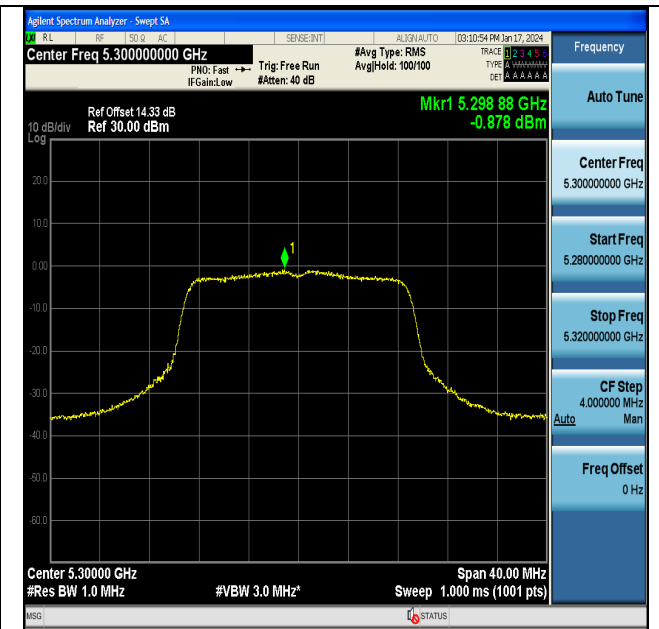


11N20MIMO-Ant7-5260-PASS

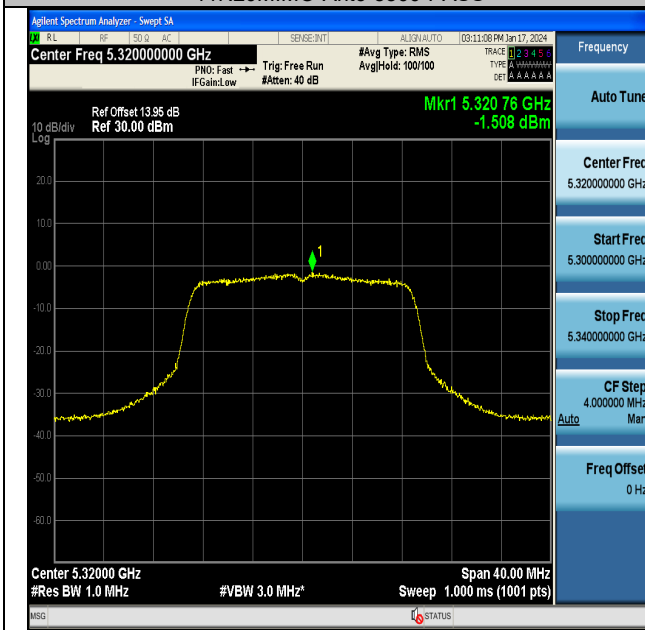




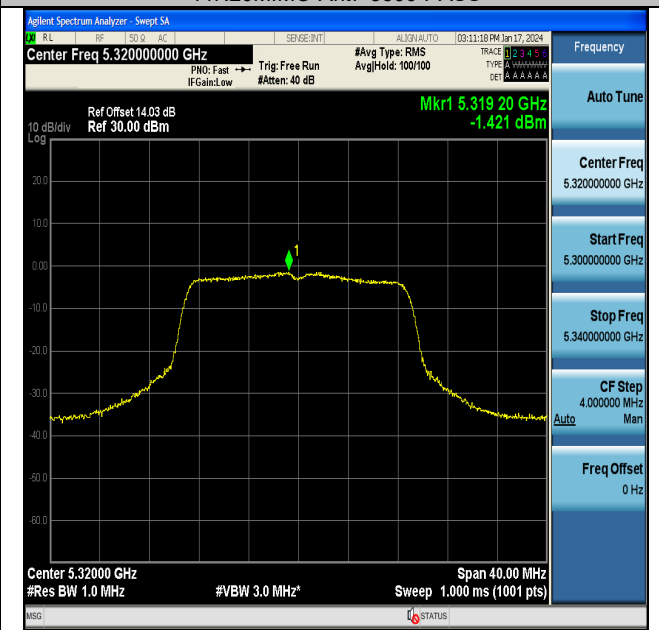
11N20MIMO-Ant6-5300-PASS



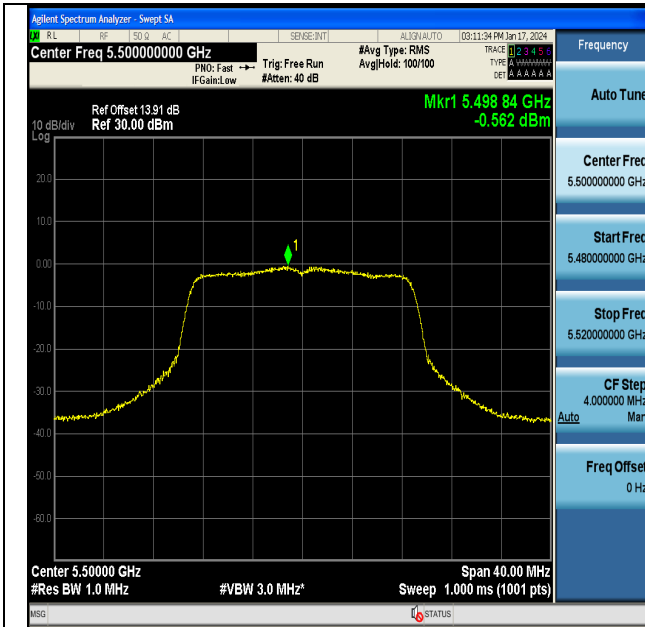
11N20MIMO-Ant7-5300-PASS



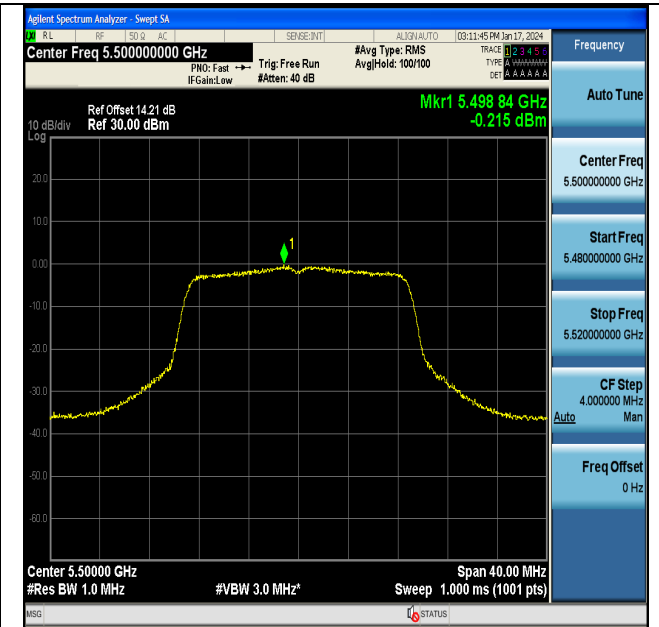
11N20MIMO-Ant6-5320-PASS



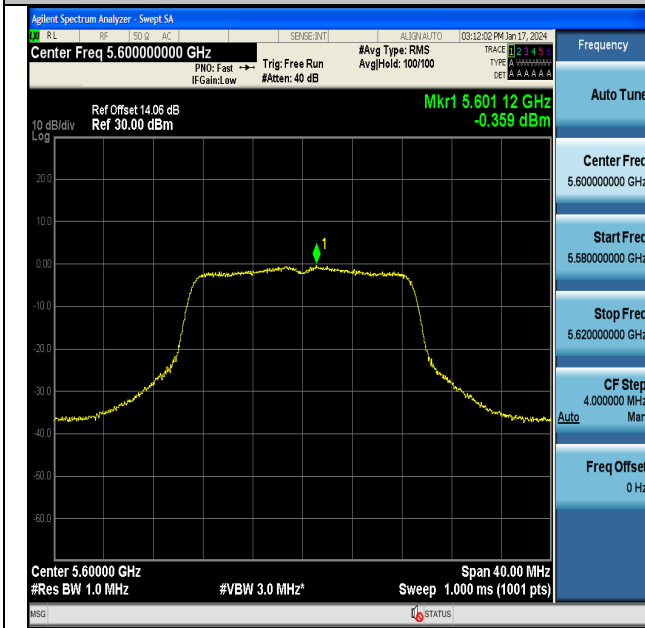
11N20MIMO-Ant7-5320-PASS



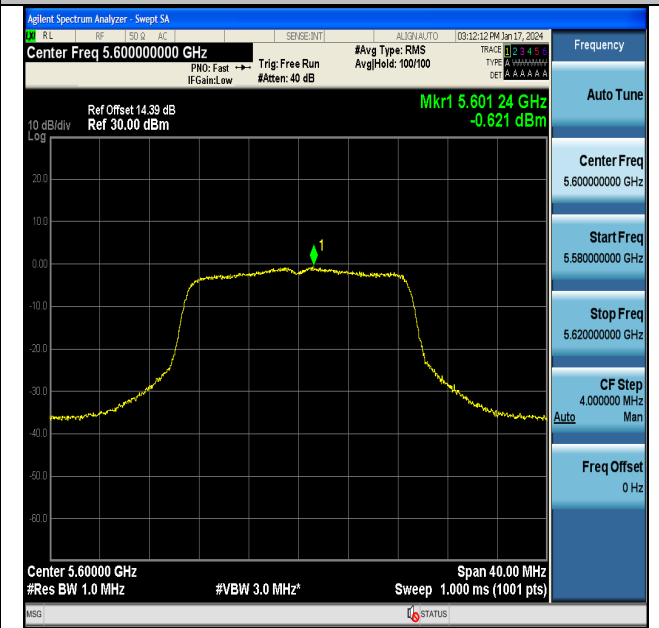
11N20MIMO-Ant6-5500-PASS



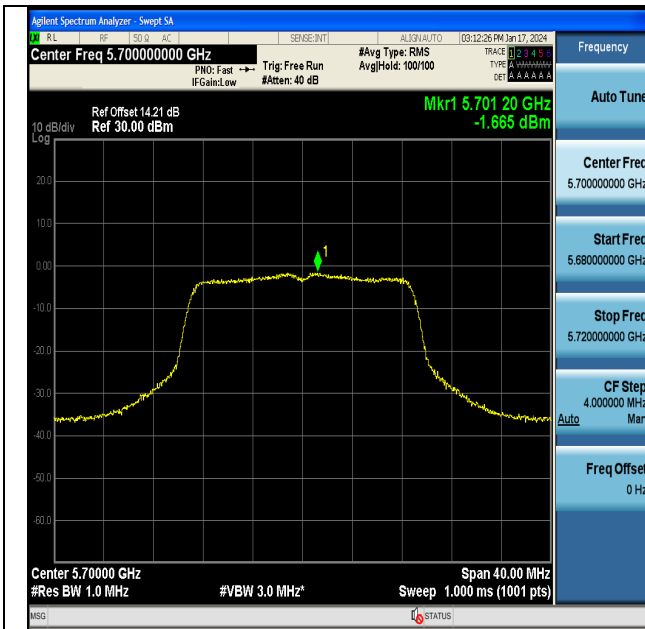
11N20MIMO-Ant7-5500-PASS



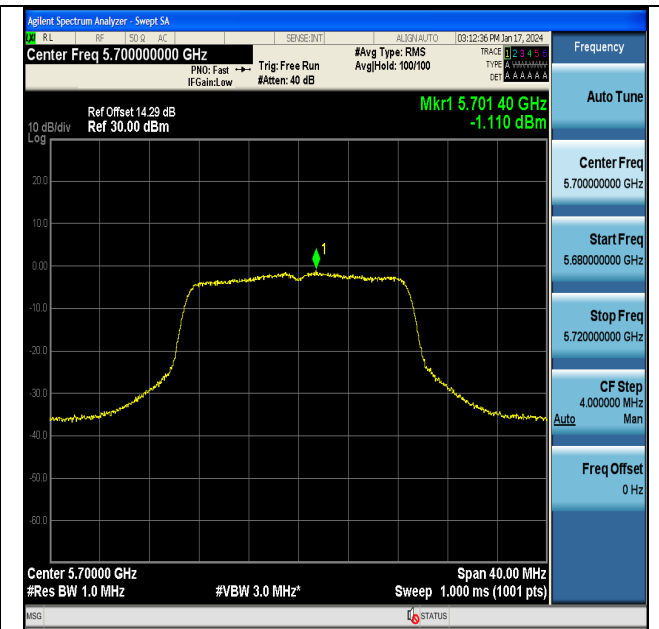
11N20MIMO-Ant6-5600-PASS



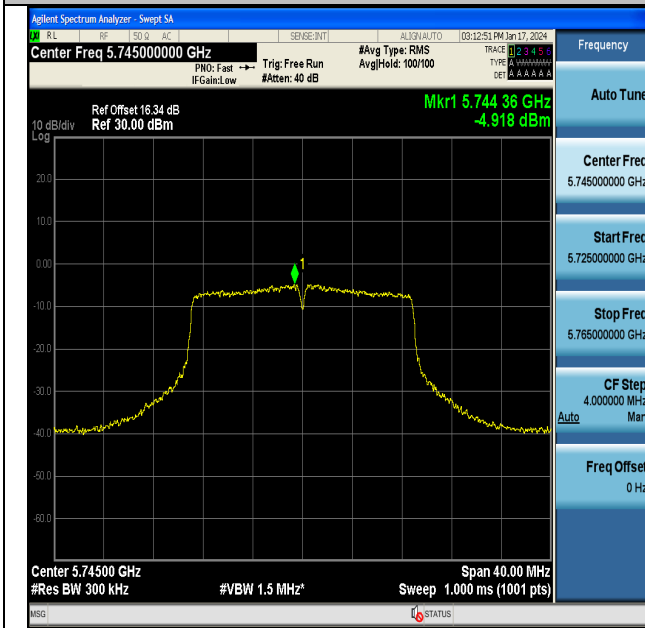
11N20MIMO-Ant7-5600-PASS



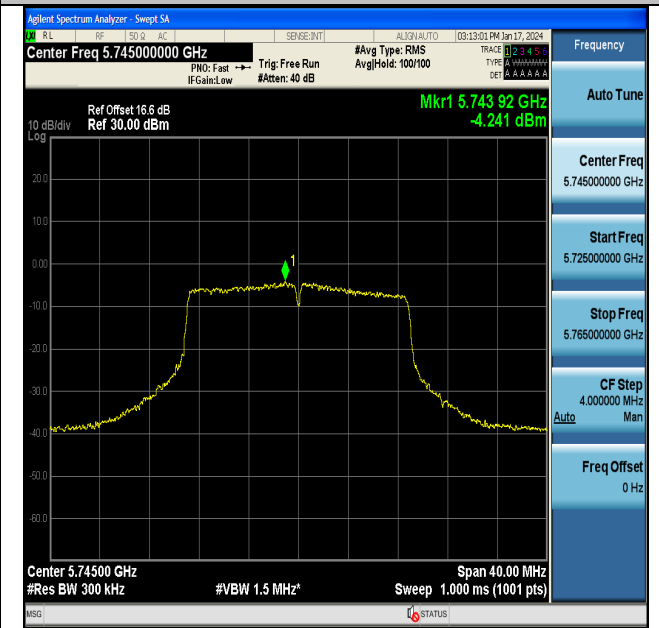
11N20MIMO-Ant6-5700-PASS



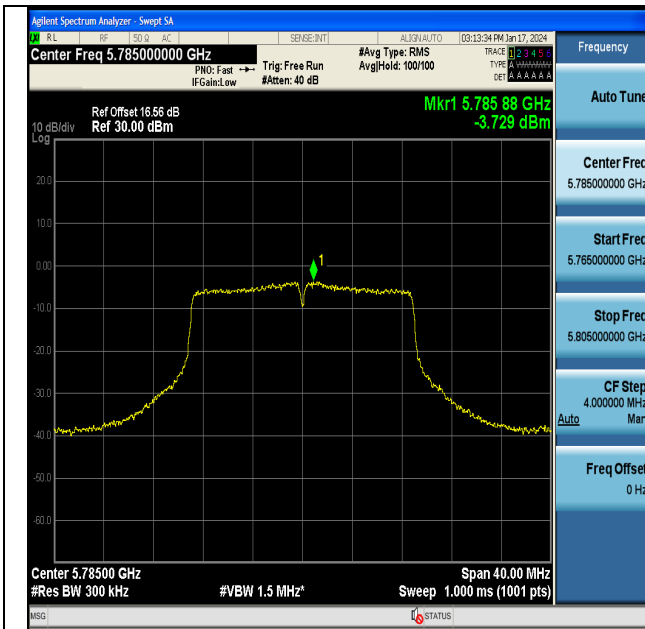
11N20MIMO-Ant7-5700-PASS



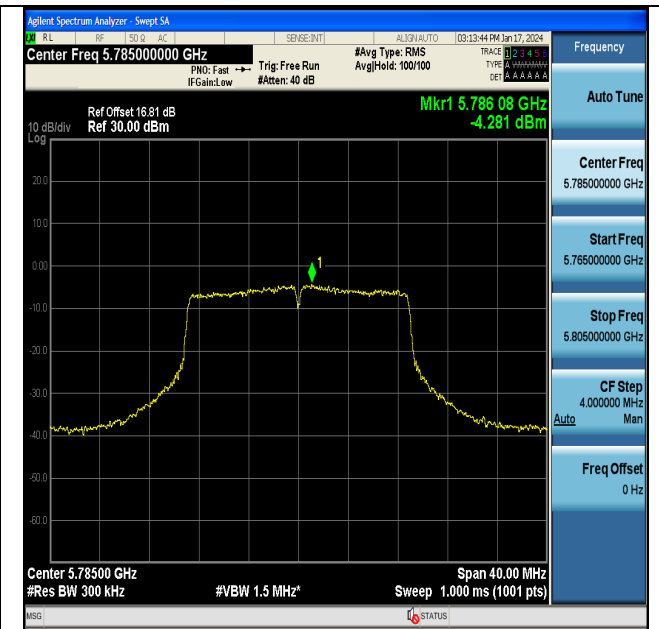
11N20MIMO-Ant6-5745-PASS



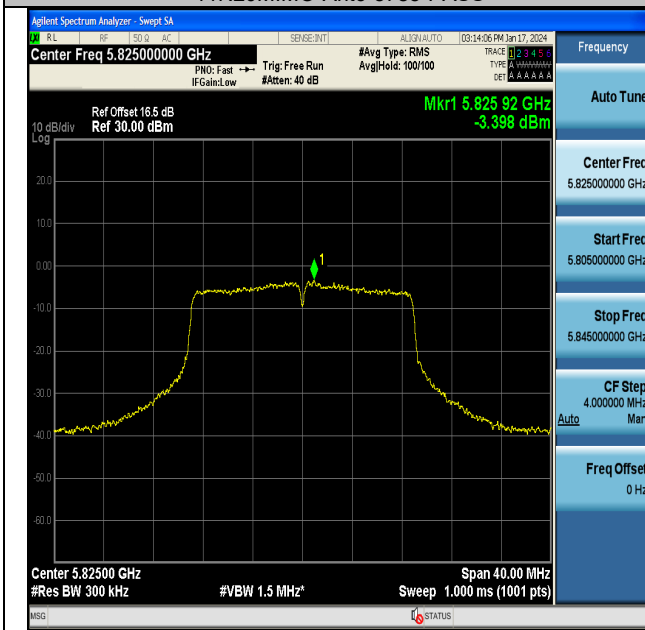
11N20MIMO-Ant7-5745-PASS



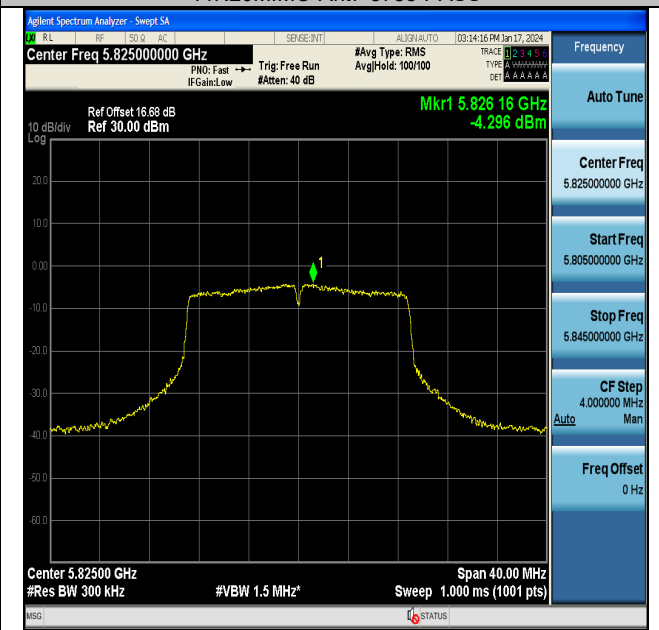
11N20MIMO-Ant6-5785-PASS



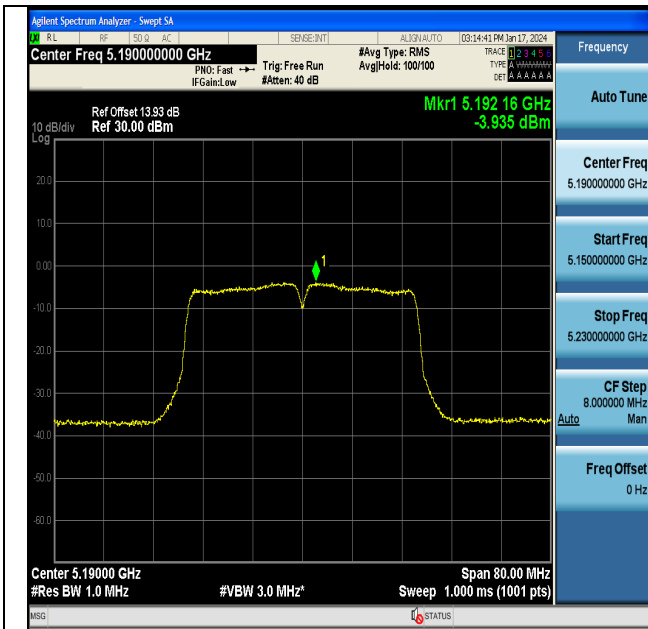
11N20MIMO-Ant7-5785-PASS



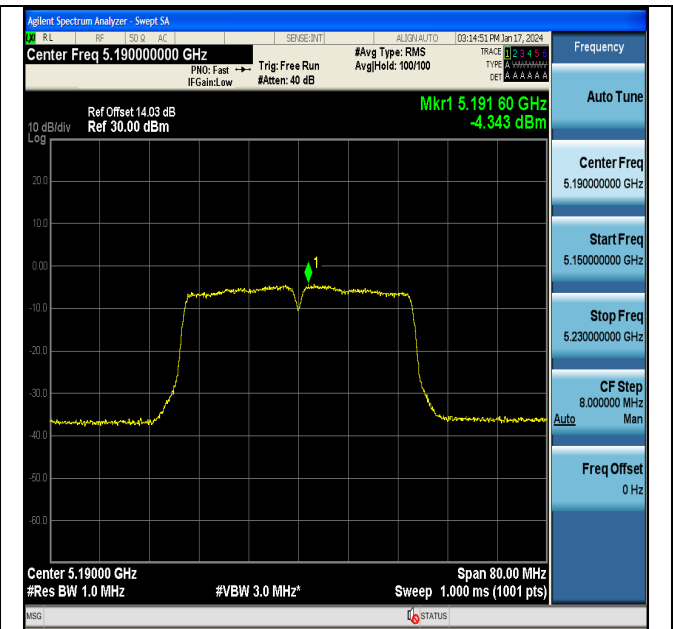
11N20MIMO-Ant6-5825-PASS



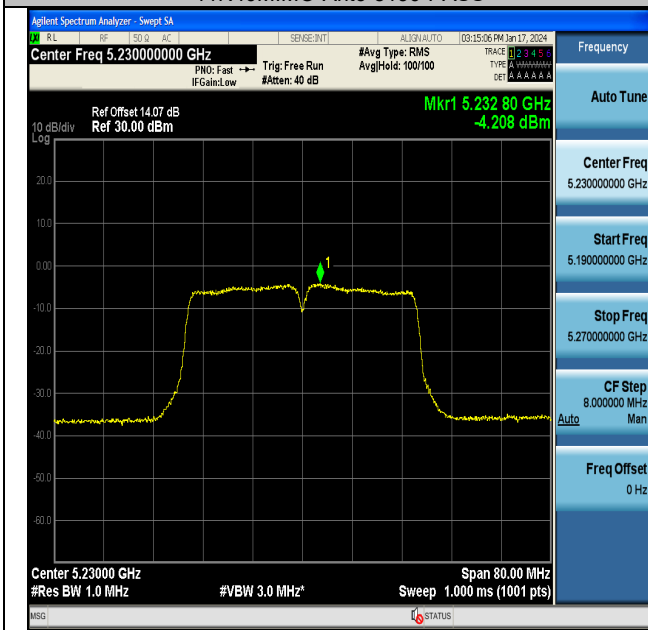
11N20MIMO-Ant7-5825-PASS



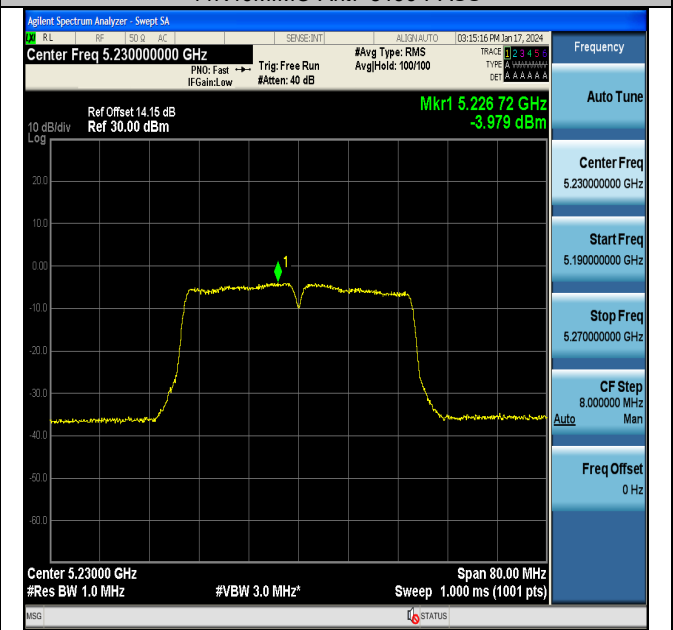
11N40MIMO-Ant6-5190-PASS



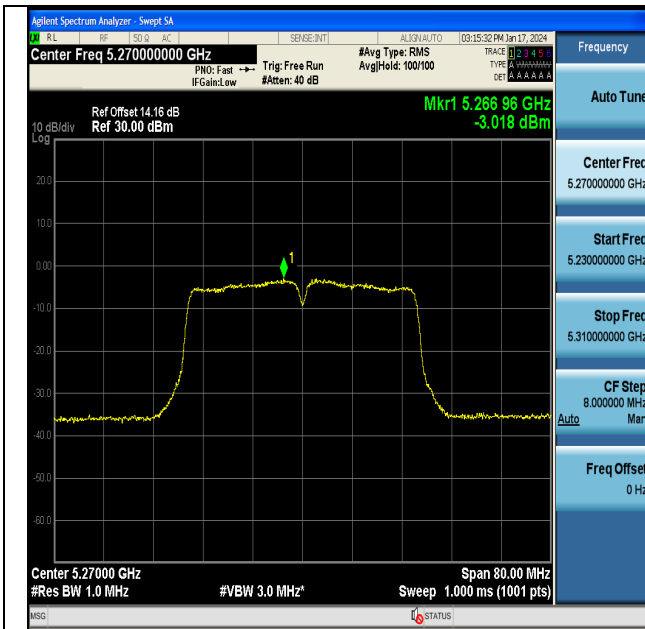
11N40MIMO-Ant7-5190-PASS



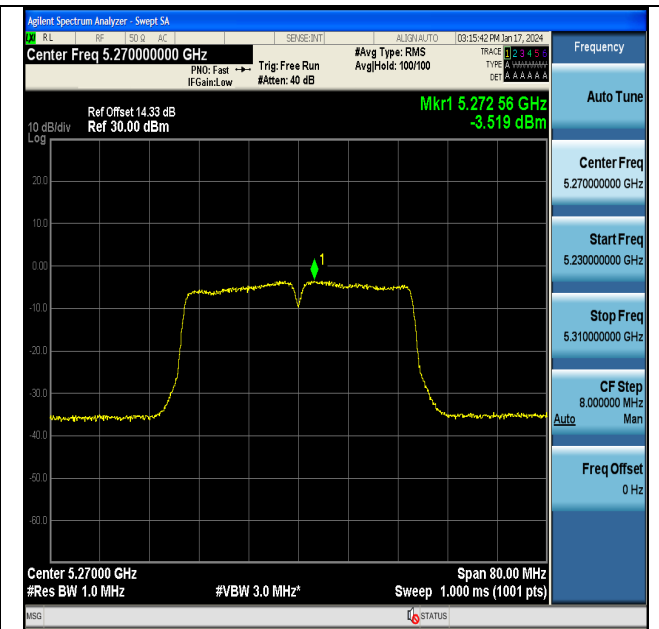
11N40MIMO-Ant6-5230-PASS



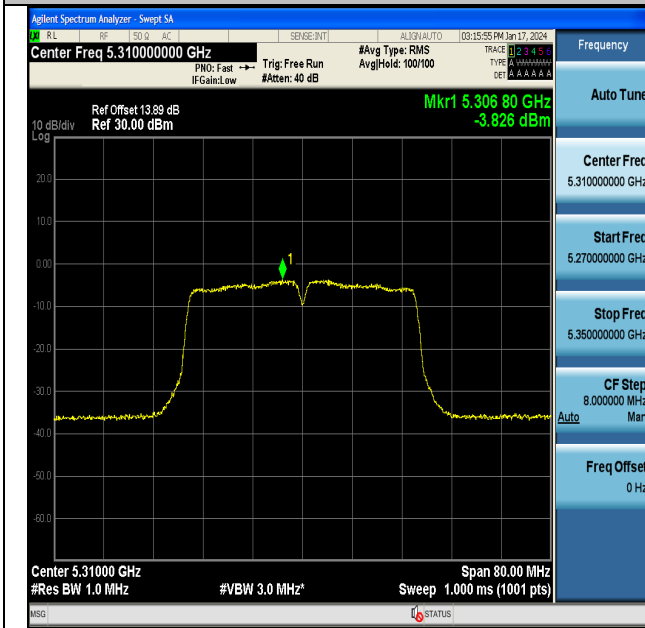
11N40MIMO-Ant7-5230-PASS



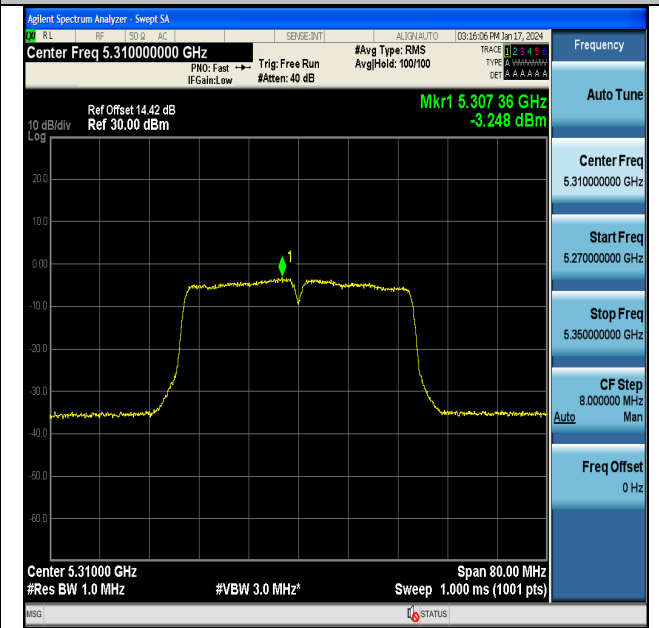
11N40MIMO-Ant6-5270-PASS



11N40MIMO-Ant7-5270-PASS

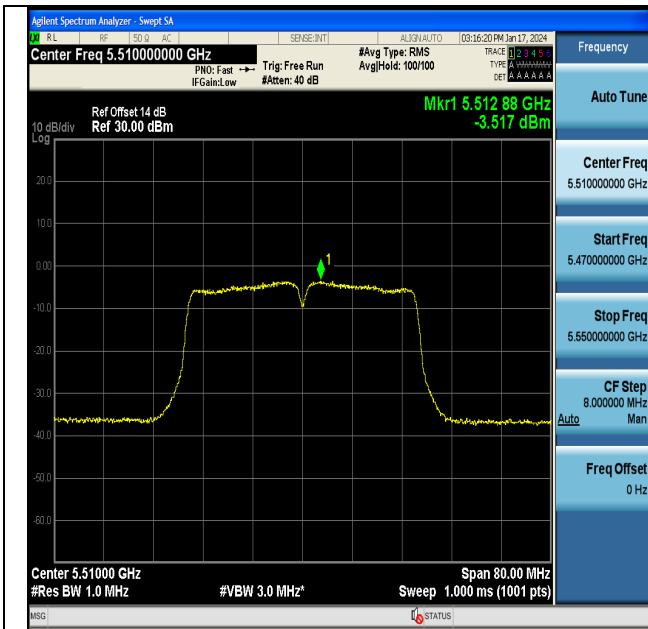


11N40MIMO-Ant6-5310-PASS

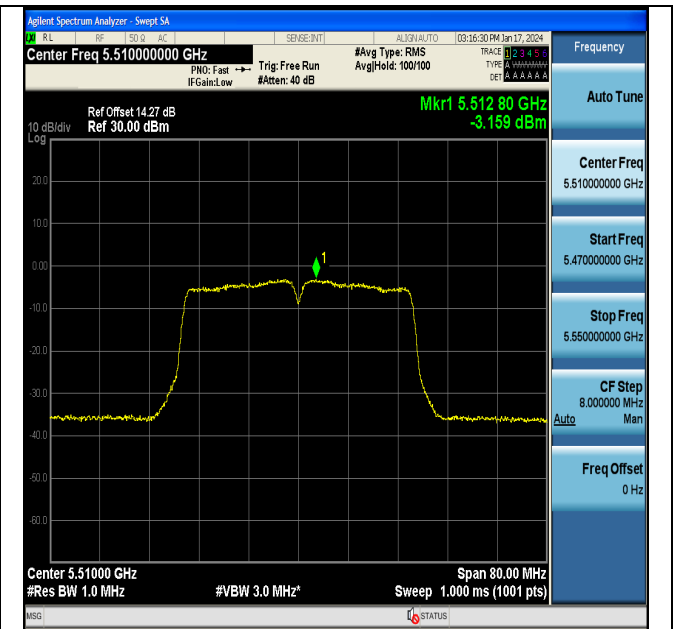


11N40MIMO-Ant7-5310-PASS

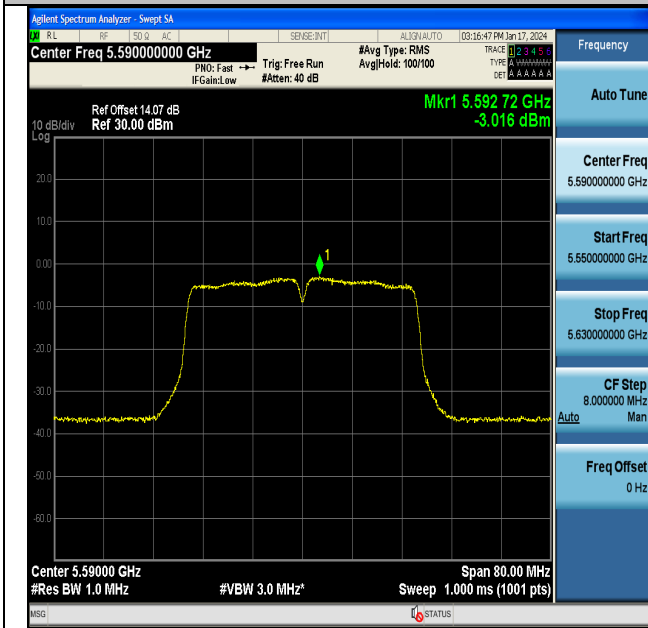




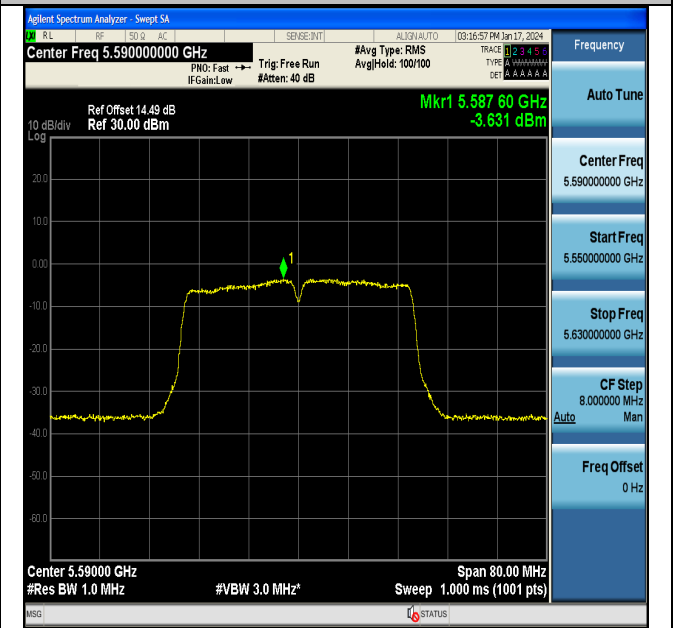
11N40MIMO-Ant6-5510-PASS



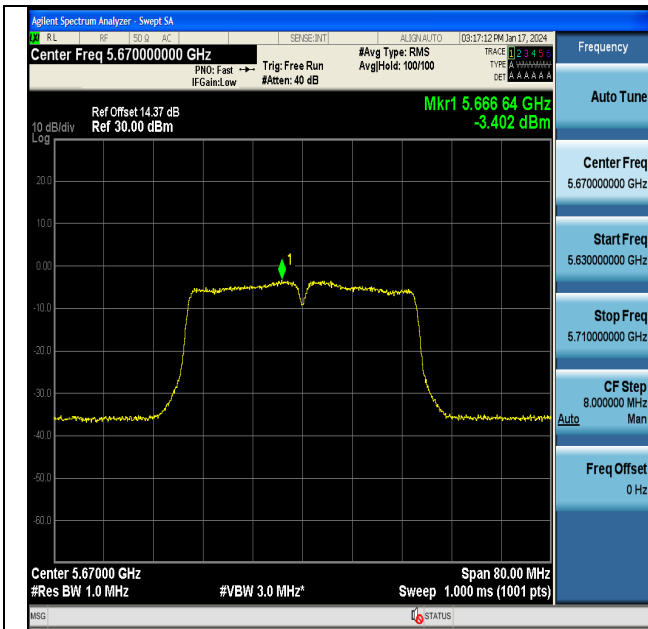
11N40MIMO-Ant7-5510-PASS



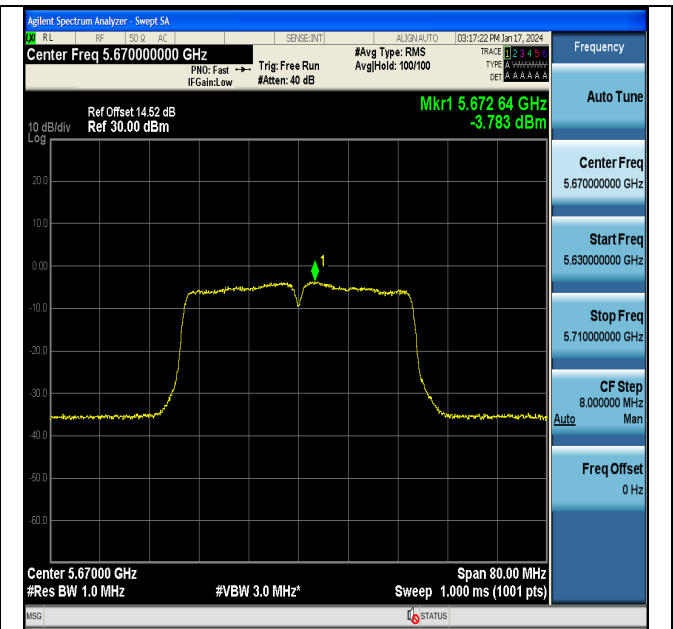
11N40MIMO-Ant6-5590-PASS



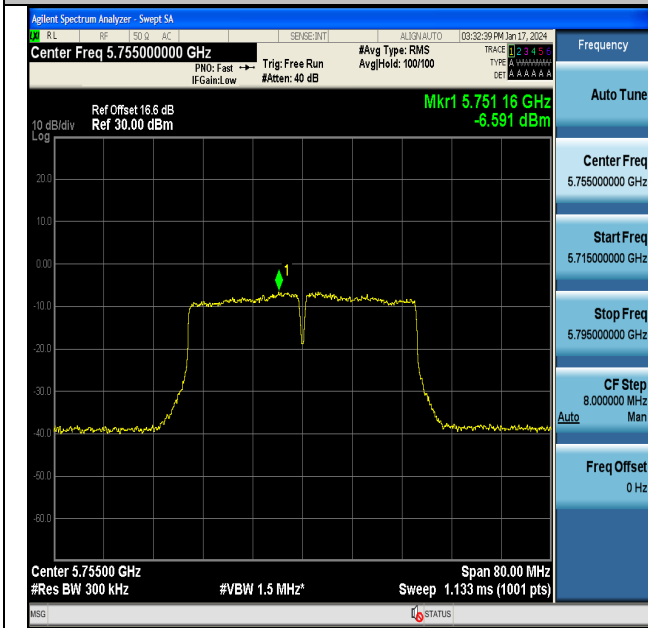
11N40MIMO-Ant7-5590-PASS



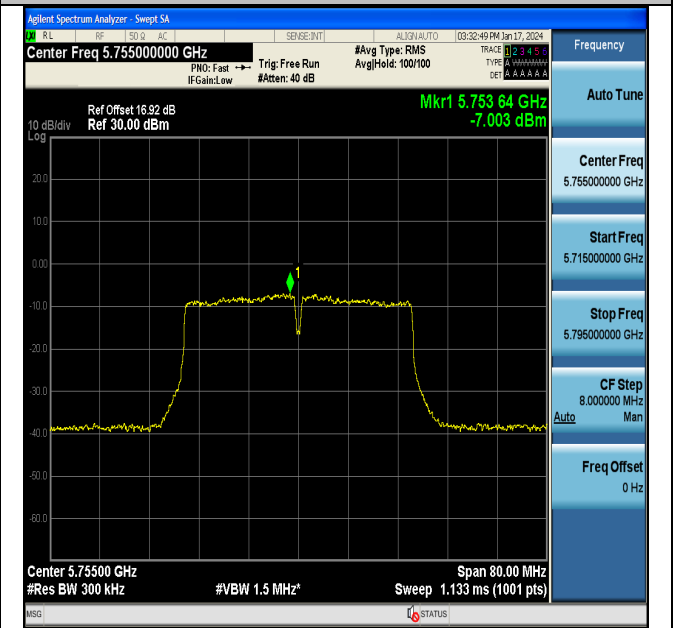
11N40MIMO-Ant6-5670-PASS



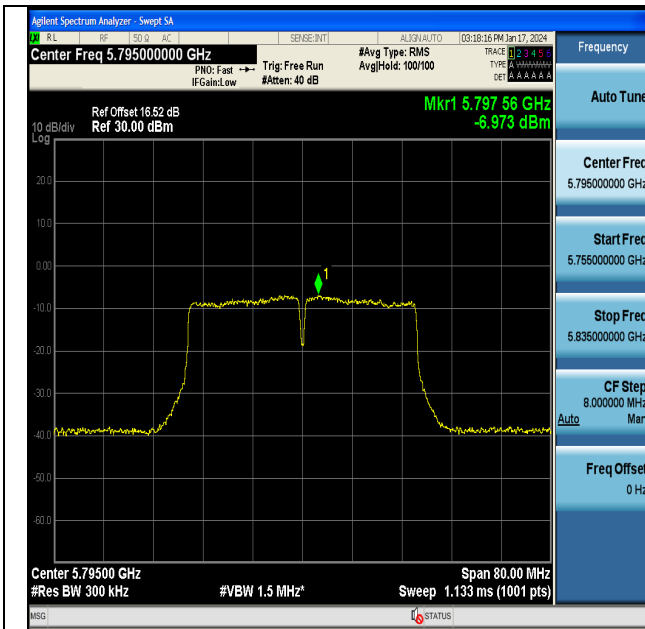
11N40MIMO-Ant7-5670-PASS



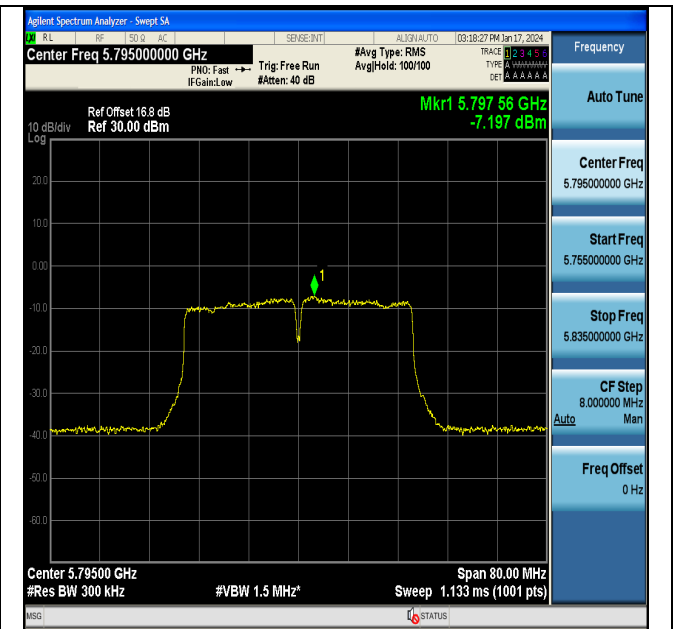
11N40MIMO-Ant6-5755-PASS



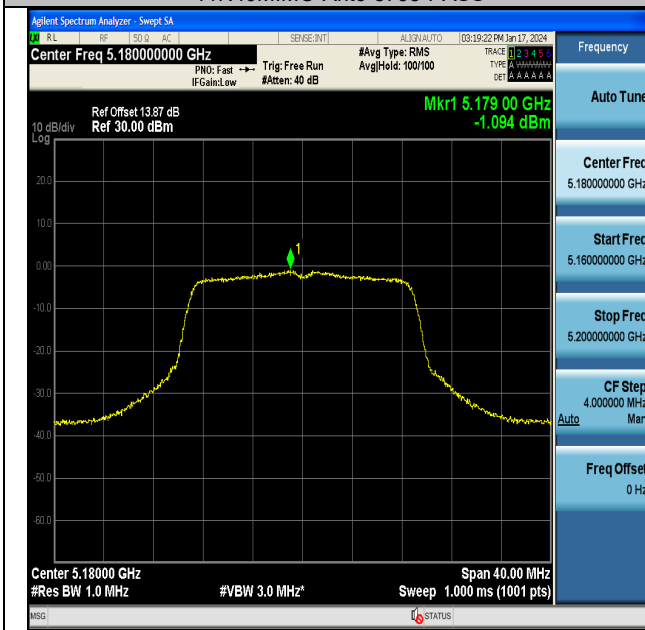
11N40MIMO-Ant7-5755-PASS



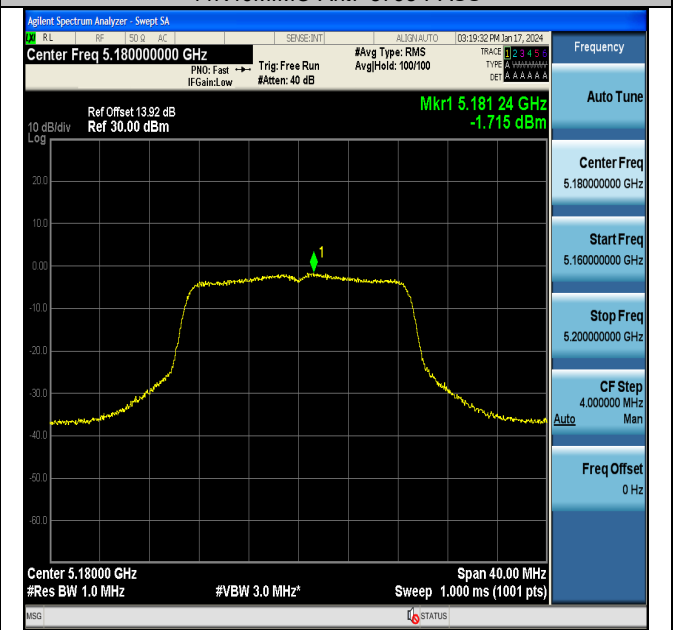
11N40MIMO-Ant6-5795-PASS



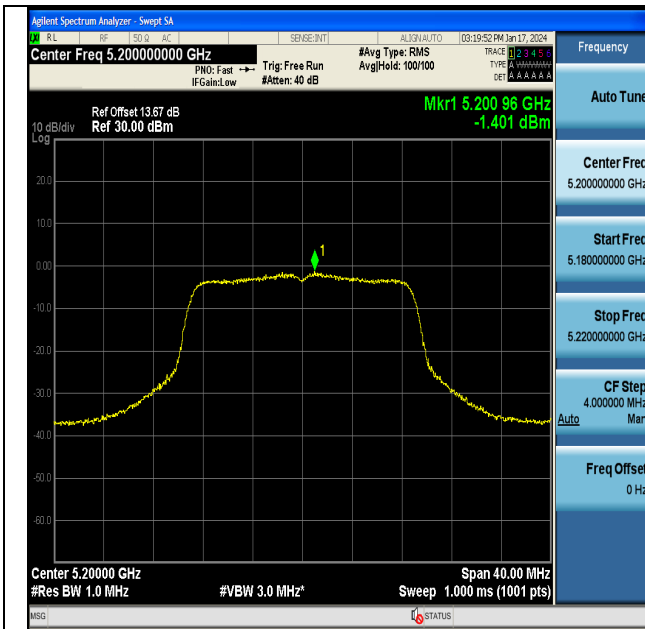
11N40MIMO-Ant7-5795-PASS



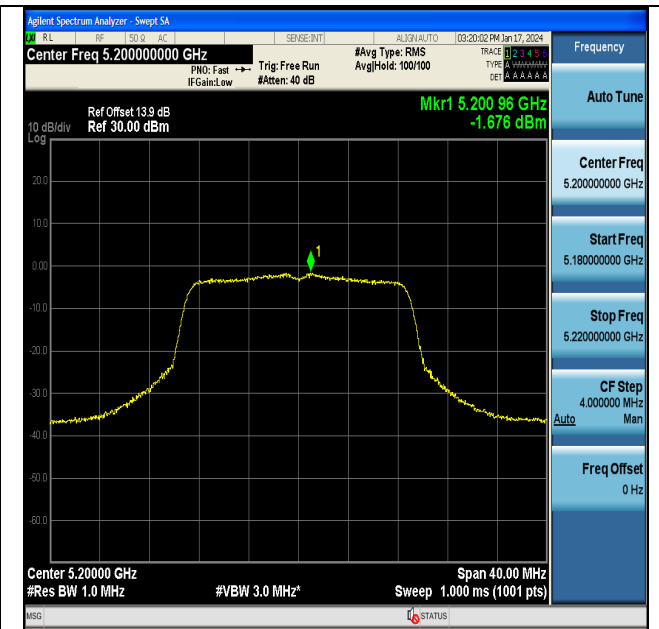
11A20MIMO-Ant6-5180-PASS



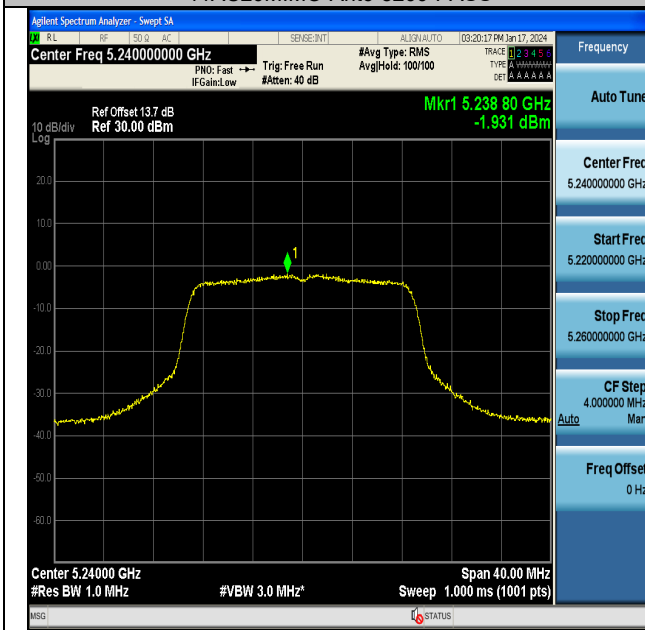
11A20MIMO-Ant7-5180-PASS



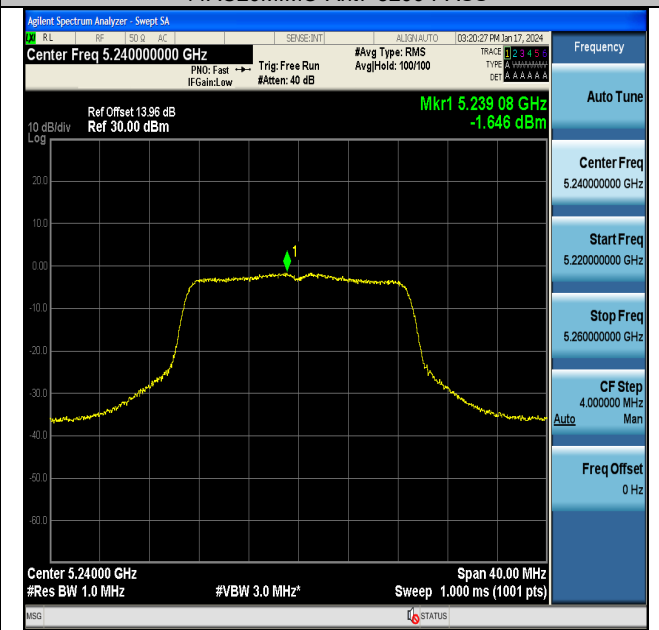
11AC20MIMO-Ant6-5200-PASS



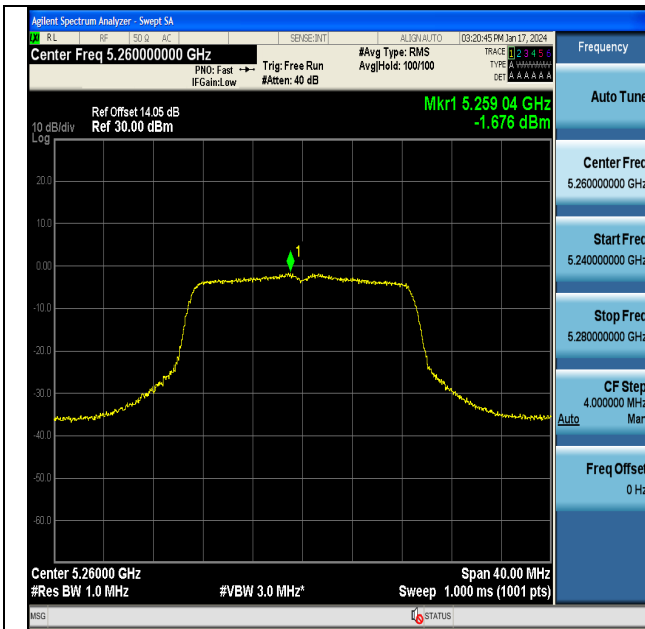
11AC20MIMO-Ant7-5200-PASS



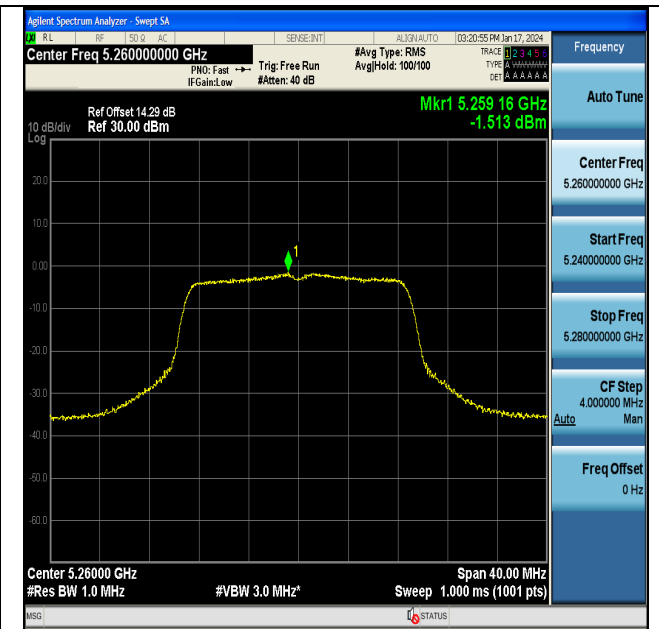
11AC20MIMO-Ant6-5240-PASS



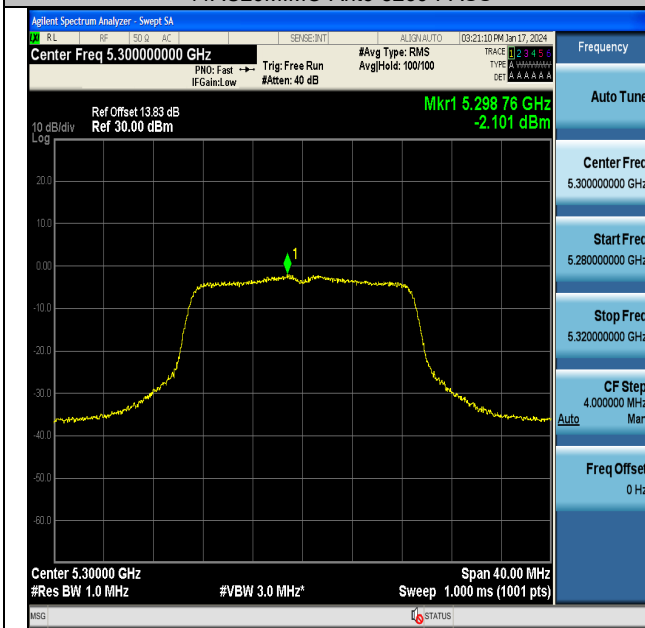
11AC20MIMO-Ant7-5240-PASS



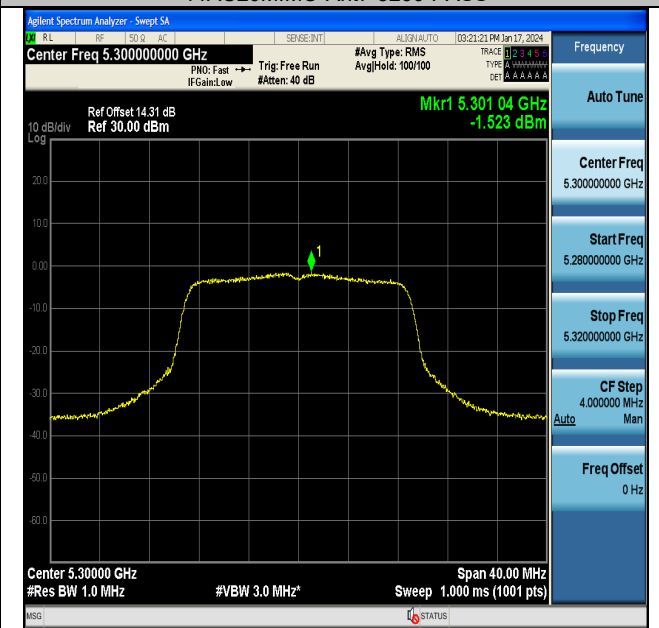
11AC20MIMO-Ant6-5260-PASS



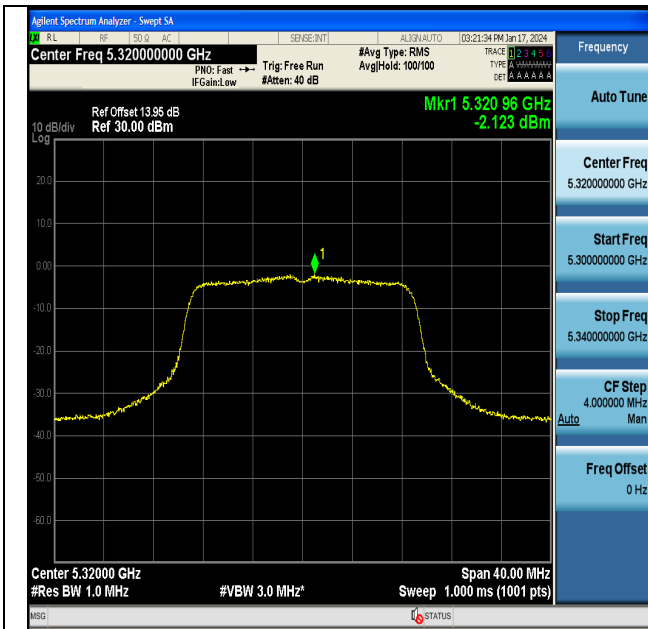
11AC20MIMO-Ant7-5260-PASS



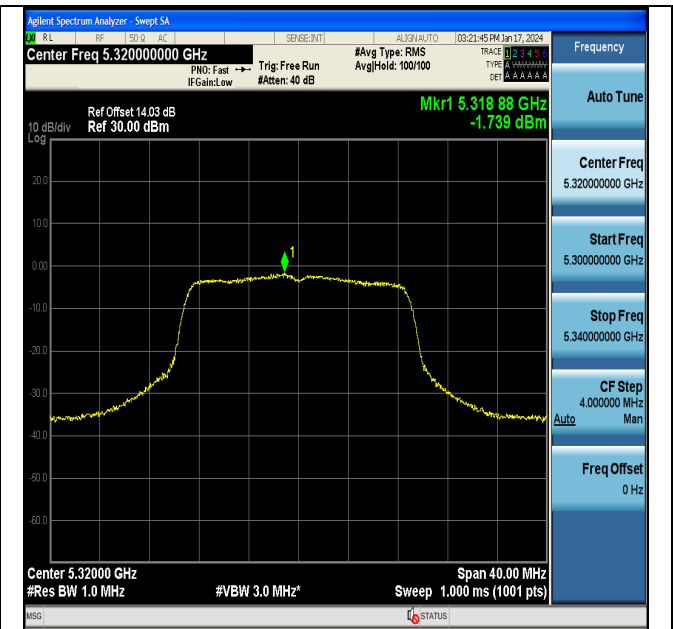
11AC20MIMO-Ant6-5300-PASS



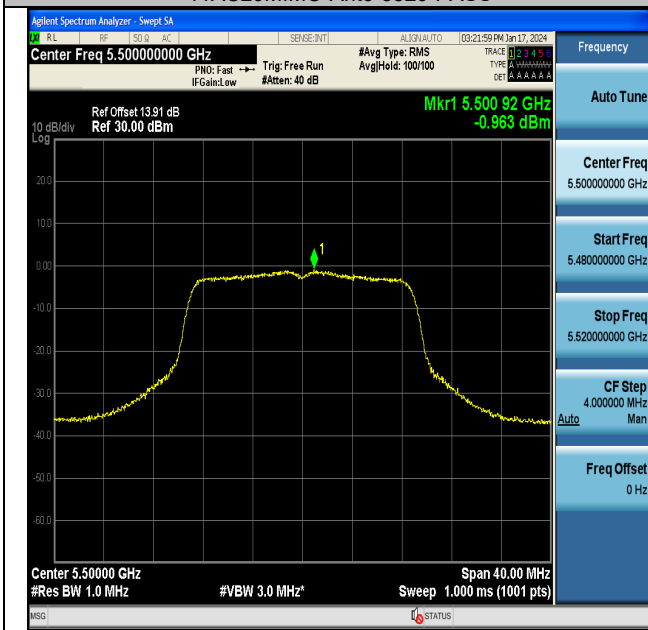
11AC20MIMO-Ant7-5300-PASS



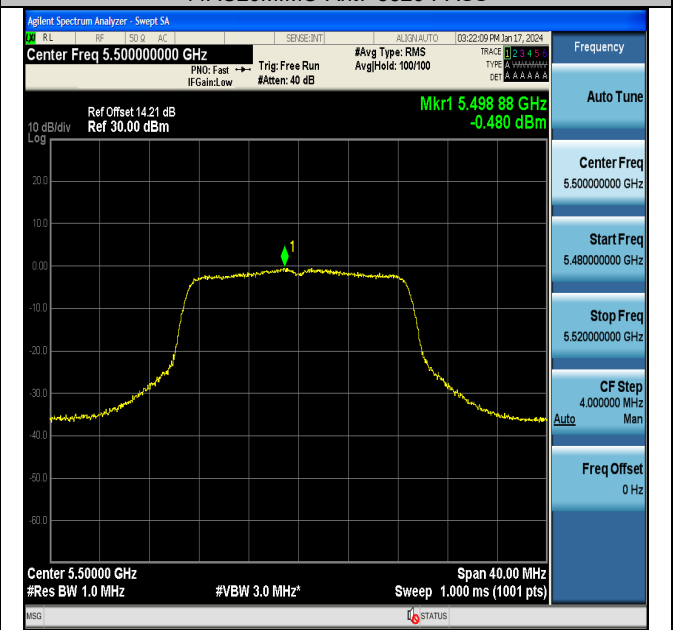
11AC20MIMO-Ant6-5320-PASS



11AC20MIMO-Ant7-5320-PASS



11AC20MIMO-Ant6-5500-PASS



11AC20MIMO-Ant7-5500-PASS