

Measurement Report for GSM 850, CHEEK, Normal, Main

Exposure Conditions

Band	GSM 850	TSL Permittivity	42.6
Frequency [MHz] Channel Number	848.8 251	TSL Conductivity [S/m]	0.927
Group UID	GSM 10090-DAC	Phantom Section TSL	LeftHead HSL
Conversion Factor	9.43	Test Distance [mm]	0.00
Communication Configuration	GPRS-FDD (TDMA, GMSK, TN 0-4)		

Hardware Setup

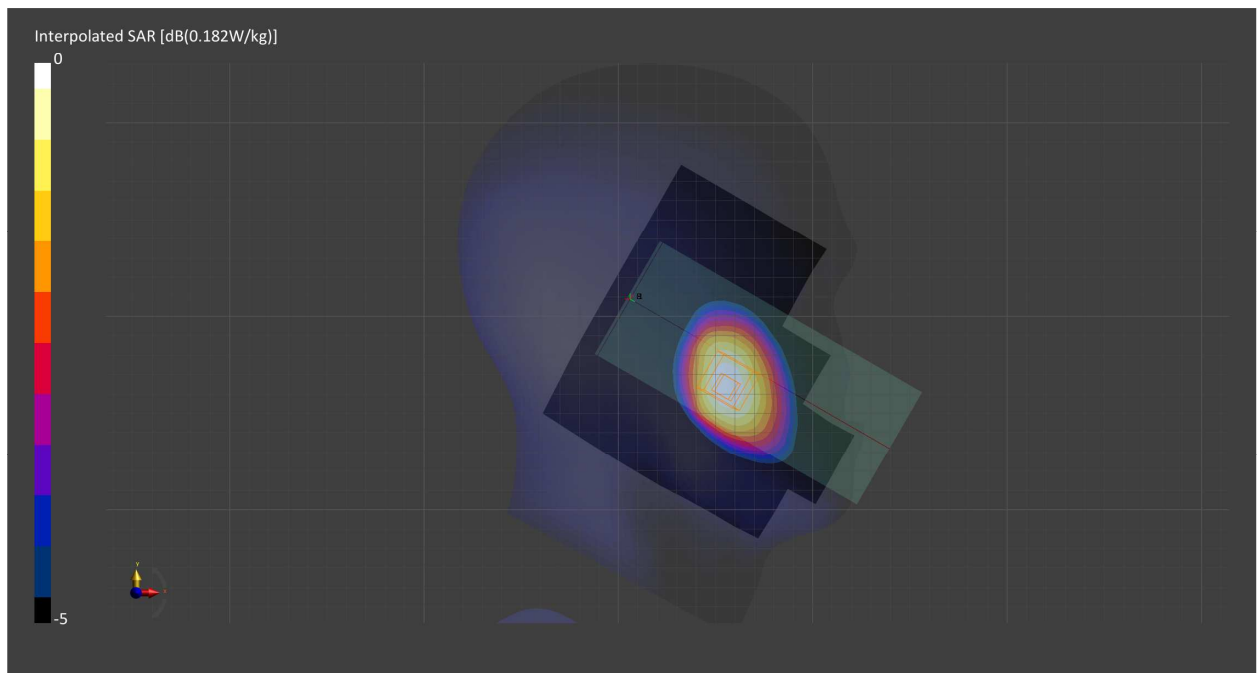
Probe Calibration Date	EX3DV4 - SN7549 2022-02-21	Phantom	Twin-SAM V8.0 (30deg probe tilt) - SN2084
DAE Calibration Date	DAE4 Sn1715 2022-02-22	TSL	HBBL-600-10000

Scans Setup

	Area Scan	Zoom Scan
Grid Extents [mm]	150.0 x 150.0	42.0 x 42.0 x 30.0
Grid Steps [mm]	15.0 x 15.0	6.0 x 6.0 x 1.5
Sensor Surface [mm]	3.0	1.4
Graded Grid	Yes	Yes
M2/M1 [%]		91.2
Dist 3dB Peak [mm]		20.5

Measurement Results

	Area Scan	Zoom Scan
psSAR1g [W/Kg]	0.158	0.160
psSAR10g [W/Kg]	0.107	0.120
Power Drift [dB]	-0.03	0.04



Measurement Report for GSM 850, BACK, Normal, Main

Exposure Conditions

Band	GSM 850	TSL Permittivity	42.6
Frequency [MHz] Channel Number	848.8 251	TSL Conductivity [S/m]	0.927
Group UID	GSM 10090-DAC	Phantom Section TSL	Flat HSL
Conversion Factor	9.43	Test Distance [mm]	10.00
Communication Configuration	GPRS-FDD (TDMA, GMSK, TN 0-4)		

Hardware Setup

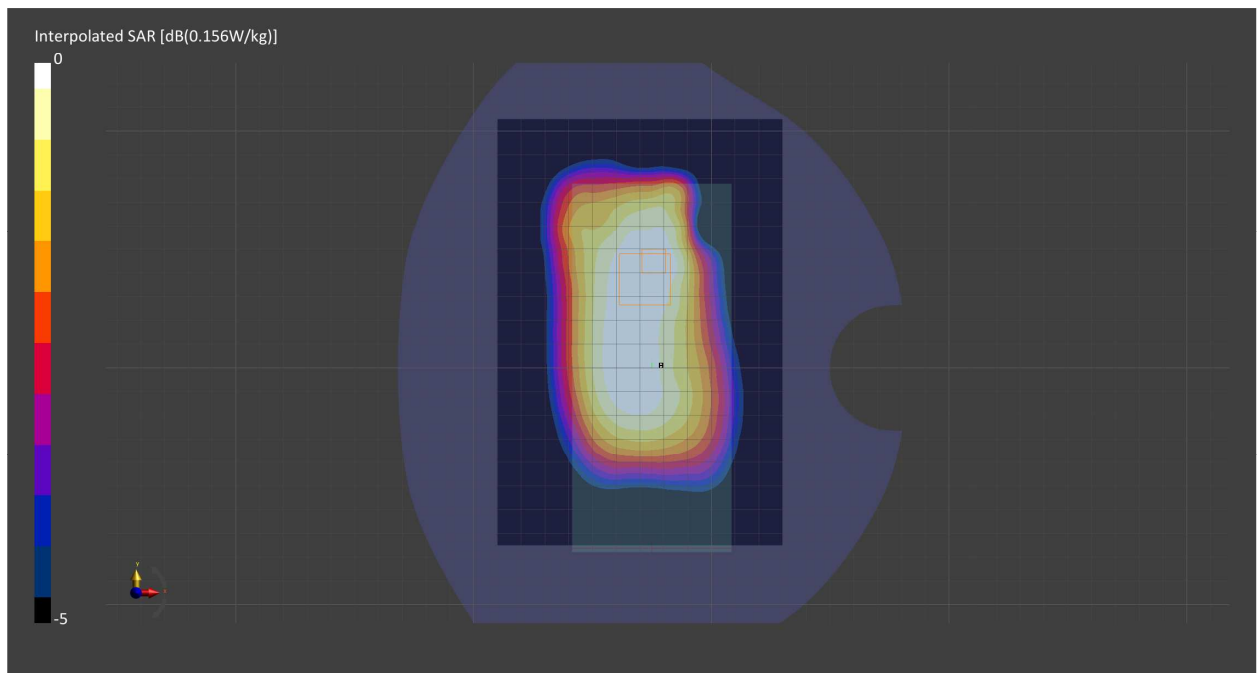
Probe Calibration Date	EX3DV4 - SN7549 2022-02-21	Phantom	Twin-SAM V8.0 (30deg probe tilt) - SN2084
DAE Calibration Date	DAE4 Sn1715 2022-02-22	TSL	HBBL-600-10000

Scans Setup

	Area Scan	Zoom Scan
Grid Extents [mm]	120.0 x 180.0	30.0 x 30.0 x 30.0
Grid Steps [mm]	15.0 x 15.0	6.0 x 6.0 x 1.5
Sensor Surface [mm]	3.0	1.4
Graded Grid	Yes	Yes
M2/M1 [%]		80.8
Dist 3dB Peak [mm]		12.0

Measurement Results

	Area Scan	Zoom Scan
psSAR1g [W/Kg]	0.139	0.147
psSAR10g [W/Kg]	0.098	0.110
Power Drift [dB]	-0.01	-0.02



Measurement Report for GSM 850, EDGE LEFT, Normal, Main

Exposure Conditions

Band	GSM 850	TSL Permittivity	42.6
Frequency [MHz] Channel Number	848.8 251	TSL Conductivity [S/m]	0.927
Group UID	GSM 10090-DAC	Phantom Section TSL	Flat HSL
Conversion Factor	9.43	Test Distance [mm]	10.00
Communication Configuration	GPRS-FDD (TDMA, GMSK, TN 0-4)		

Hardware Setup

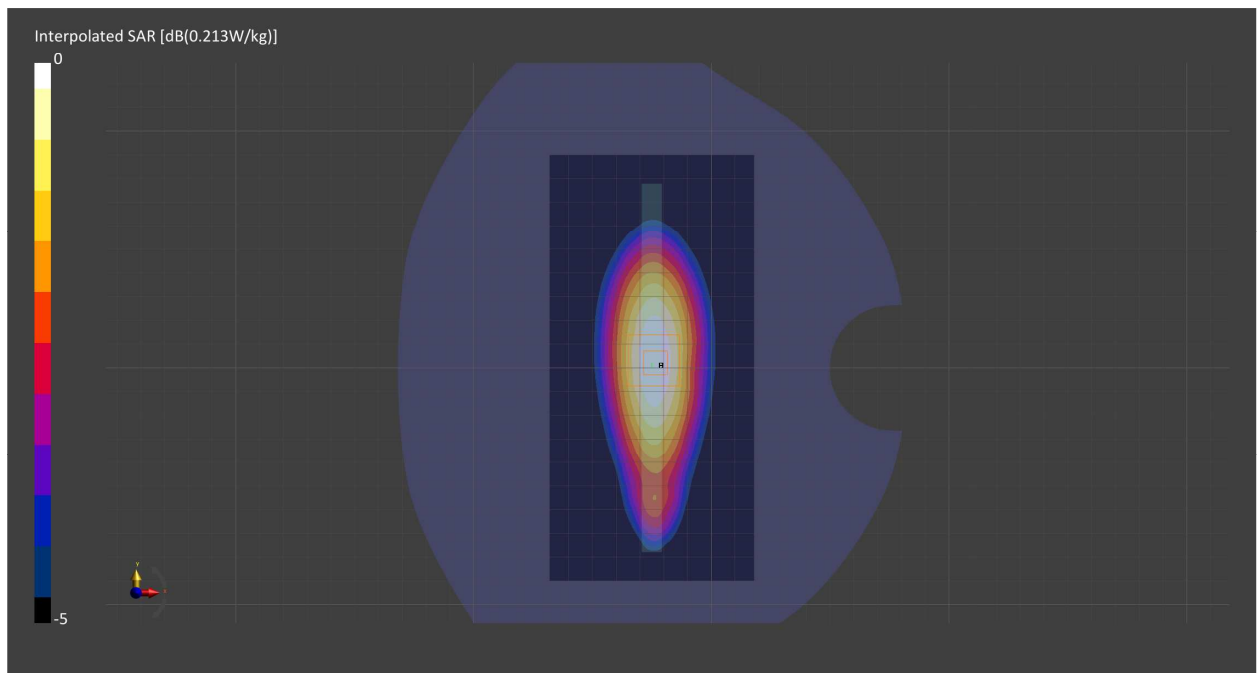
Probe Calibration Date	EX3DV4 - SN7549 2022-02-21	Phantom	Twin-SAM V8.0 (30deg probe tilt) - SN2084
DAE Calibration Date	DAE4 Sn1715 2022-02-22	TSL Meas. Date	HBBL-600-10000 2022-Aug-01

Scans Setup

	Area Scan	Zoom Scan
Grid Extents [mm]	86.0 x 180.0	30.0 x 30.0 x 30.0
Grid Steps [mm]	8.6 x 15.0	6.0 x 6.0 x 1.5
Sensor Surface [mm]	3.0	1.4
Graded Grid	Yes	Yes
M2/M1 [%]		85.1
Dist 3dB Peak [mm]		> 15.0

Measurement Results

	Area Scan	Zoom Scan
psSAR1g [W/Kg]	0.185	0.190
psSAR10g [W/Kg]	0.125	0.128
Power Drift [dB]	-0.01	0.01



Measurement Report for GSM 850 DTM, EDGE LEFT, Normal, Main

Exposure Conditions

Band	GSM 850	TSL Permittivity	42.6
Frequency [MHz] Channel Number	848.8 251	TSL Conductivity [S/m]	0.927
Group UID	GSM 10024-DAC	Phantom Section TSL	Flat HSL
Conversion Factor	9.43	Test Distance [mm]	10.00
Communication Configuration	GPRS-FDD (TDMA, GMSK, TN 0-1)		

Hardware Setup

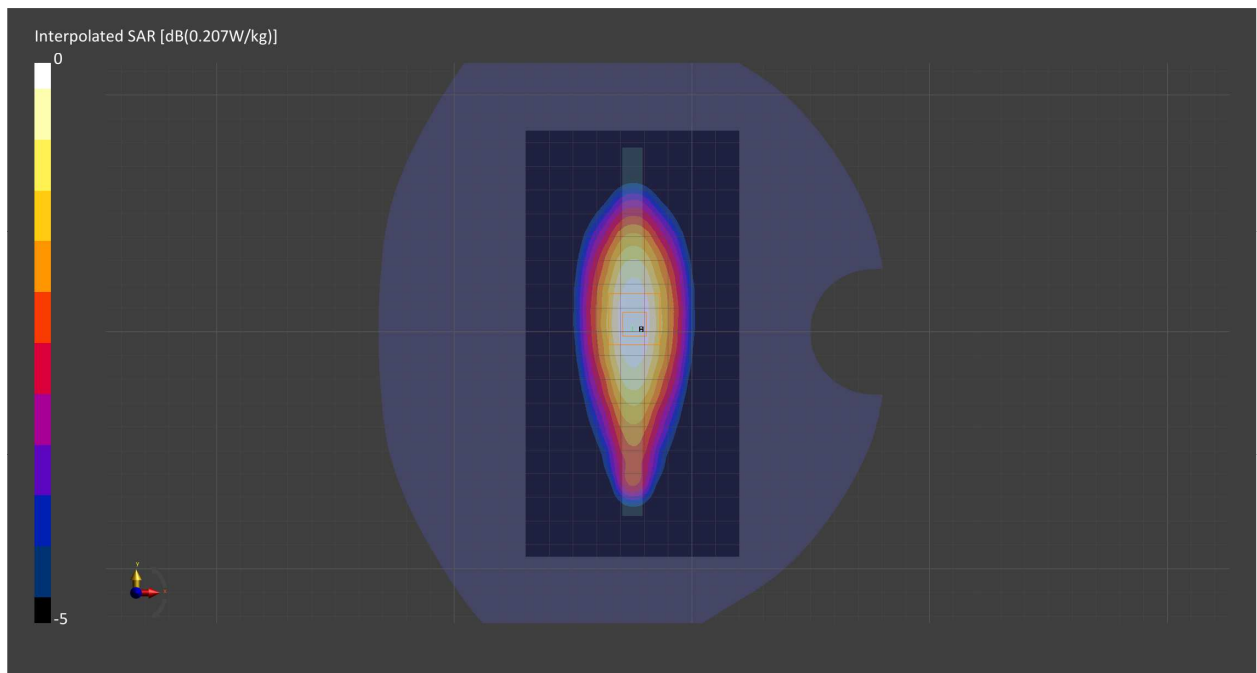
Probe Calibration Date	EX3DV4 - SN7549 2022-02-21	Phantom	Twin-SAM V8.0 (30deg probe tilt) - SN2084
DAE Calibration Date	DAE4 Sn1715 2022-02-22	TSL	HBBL-600-10000

Scans Setup

	Area Scan	Zoom Scan
Grid Extents [mm]	90.0 x 180.0	30.0 x 30.0 x 30.0
Grid Steps [mm]	15.0 x 15.0	6.0 x 6.0 x 1.5
Sensor Surface [mm]	3.0	1.4
Graded Grid	Yes	Yes
M2/M1 [%]		84.6
Dist 3dB Peak [mm]		> 15.0

Measurement Results

	Area Scan	Zoom Scan
psSAR1g [W/Kg]	0.181	0.185
psSAR10g [W/Kg]	0.121	0.125
Power Drift [dB]	-0.04	-0.02



Measurement Report for PCS 1900, CHEEK, Normal, Main

Exposure Conditions

Band	PCS 1900	TSL Permittivity	38.8
Frequency [MHz] Channel Number	1880.0 661	TSL Conductivity [S/m]	1.47
Group UID	GSM 10090-DAC	Phantom Section TSL	LeftHead HSL
Conversion Factor	8.51	Test Distance [mm]	0.00
Communication Configuration	GPRS-FDD (TDMA, GMSK, TN 0-4)		

Hardware Setup

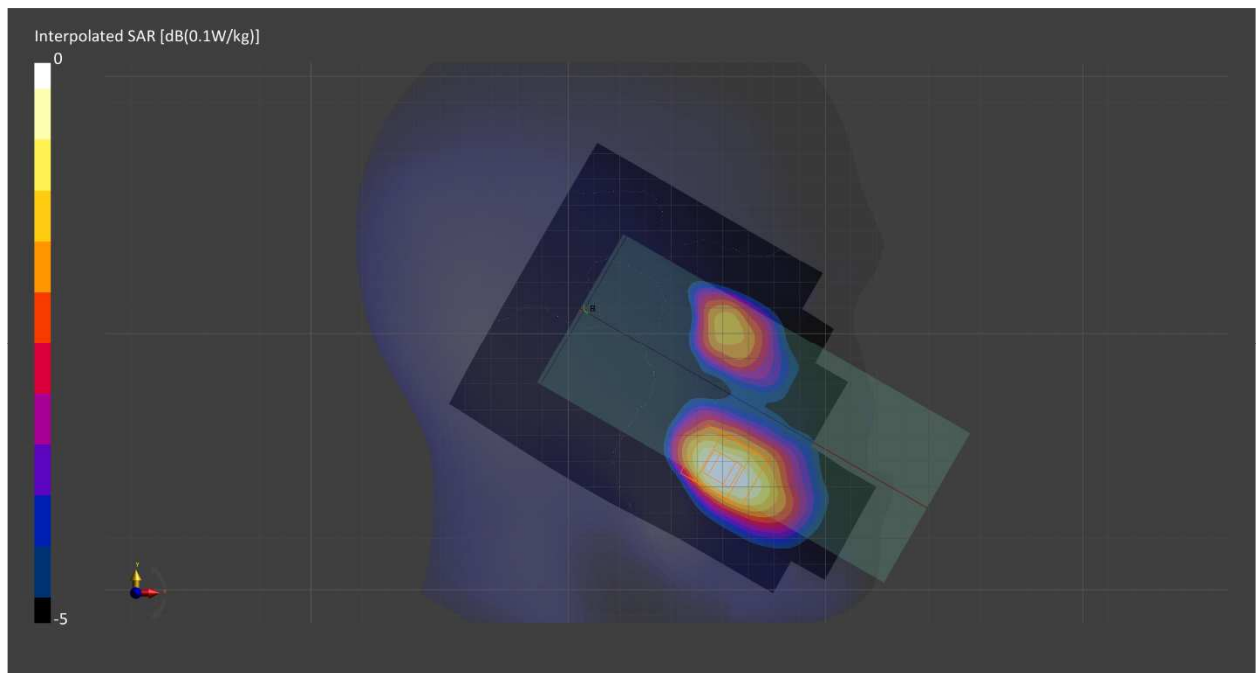
Probe Calibration Date	EX3DV4 - SN7709 2022-02-25	Phantom	Twin-SAM V8.0 (30deg probe tilt) - SN2082
DAE Calibration Date	DAE4 Sn1714 2022-02-23	TSL	HBBL-600-10000

Scans Setup

	Area Scan	Zoom Scan
Grid Extents [mm]	120.0 x 210.0	30.0 x 30.0 x 30.0
Grid Steps [mm]	15.0 x 15.0	6.0 x 6.0 x 1.5
Sensor Surface [mm]	3.0	1.4
Graded Grid	Yes	Yes
M2/M1 [%]		88.4
Dist 3dB Peak [mm]		> 15.0

Measurement Results

	Area Scan	Zoom Scan
psSAR1g [W/Kg]	0.024	0.025
psSAR10g [W/Kg]	0.014	0.015
Power Drift [dB]	-0.01	0.09



Measurement Report for PCS 1900, BACK, Normal, Main

Exposure Conditions

Band	PCS 1900	TSL Permittivity	38.8
Frequency [MHz] Channel Number	1880.0 661	TSL Conductivity [S/m]	1.47
Group UID	GSM 10090-DAC	Phantom Section TSL	Flat HSL
Conversion Factor	8.51	Test Distance [mm]	10.00
Communication Configuration	GPRS-FDD (TDMA, GMSK, TN 0-4)		

Hardware Setup

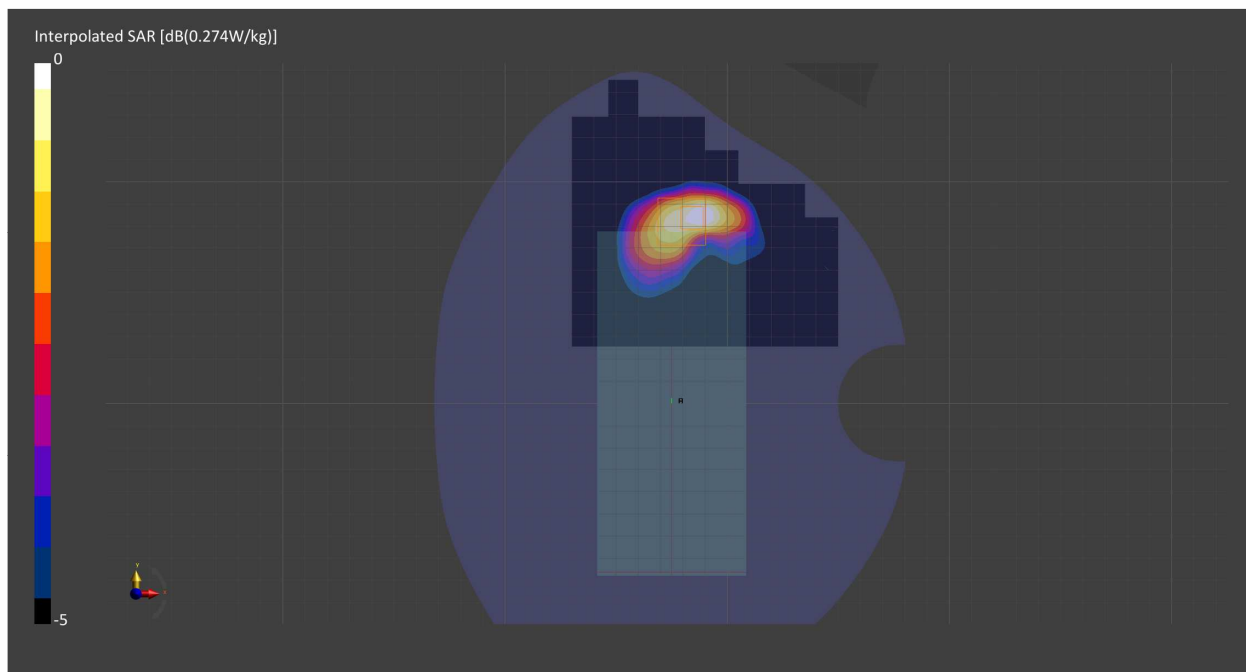
Probe Calibration Date	EX3DV4 - SN7709 2022-02-25	Phantom	Twin-SAM V8.0 (30deg probe tilt) - SN2082
DAE Calibration Date	DAE4 Sn1714 2022-02-23	TSL	HBBL-600-10000

Scans Setup

	Area Scan	Zoom Scan
Grid Extents [mm]	120.0 x 120.0	30.0 x 30.0 x 30.0
Grid Steps [mm]	15.0 x 15.0	6.0 x 6.0 x 1.5
Sensor Surface [mm]	3.0	1.4
Graded Grid	Yes	Yes
M2/M1 [%]		82.9
Dist 3dB Peak [mm]		10.2

Measurement Results

	Area Scan	Zoom Scan
psSAR1g [W/Kg]	0.222	0.221
psSAR10g [W/Kg]	0.122	0.124
Power Drift [dB]	0.02	0.00



Measurement Report for PCS 1900, EDGE BOTTOM, Normal, Main

Exposure Conditions

Band	PCS 1900	TSL Permittivity	38.8
Frequency [MHz] Channel Number	1880.0 661	TSL Conductivity [S/m]	1.47
Group UID	GSM 10090-DAC	Phantom Section TSL	Flat HSL
Conversion Factor	8.51	Test Distance [mm]	10.00
Communication Configuration	GPRS-FDD (TDMA, GMSK, TN 0-4)		

Hardware Setup

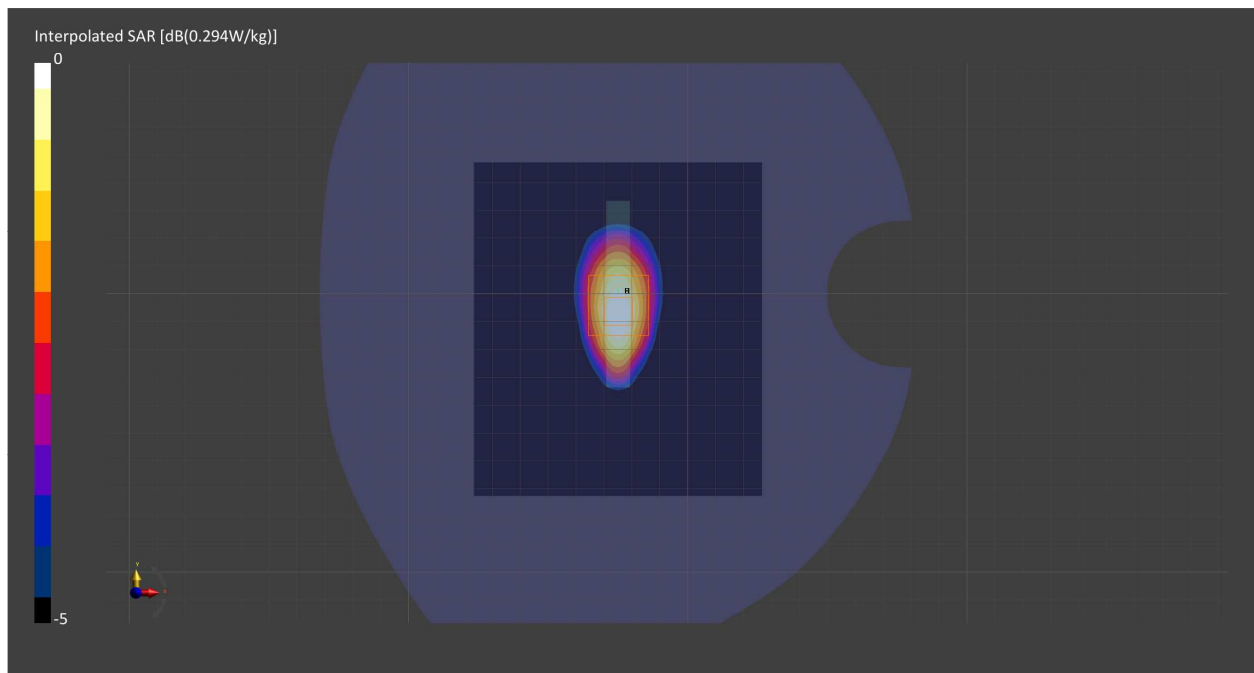
Probe Calibration Date	EX3DV4 - SN7709 2022-02-25	Phantom	Twin-SAM V8.0 (30deg probe tilt) - SN2082
DAE Calibration Date	DAE4 Sn1714 2022-02-23	TSL	HBBL-600-10000

Scans Setup

	Area Scan	Zoom Scan
Grid Extents [mm]	103.2 x 120.0	30.0 x 30.0 x 30.0
Grid Steps [mm]	8.6 x 15.0	6.0 x 6.0 x 1.5
Sensor Surface [mm]	3.0	1.4
Graded Grid	Yes	Yes
M2/M1 [%]		80.8
Dist 3dB Peak [mm]		11.4

Measurement Results

	Area Scan	Zoom Scan
psSAR1g [W/Kg]	0.236	0.237
psSAR10g [W/Kg]	0.130	0.130
Power Drift [dB]	-0.00	-0.05



Measurement Report for PCS 1900 DTM, EDGE BOTTOM, Normal, Main

Exposure Conditions

Band	PCS 1900	TSL Permittivity	38.8
Frequency [MHz] Channel Number	1880.0 661	TSL Conductivity [S/m]	1.47
Group UID	GSM 10024-DAC	Phantom Section TSL	Flat HSL
Conversion Factor	8.51	Test Distance [mm]	10.00
Communication Configuration	GPRS-FDD (TDMA, GMSK, TN 0-1)		

Hardware Setup

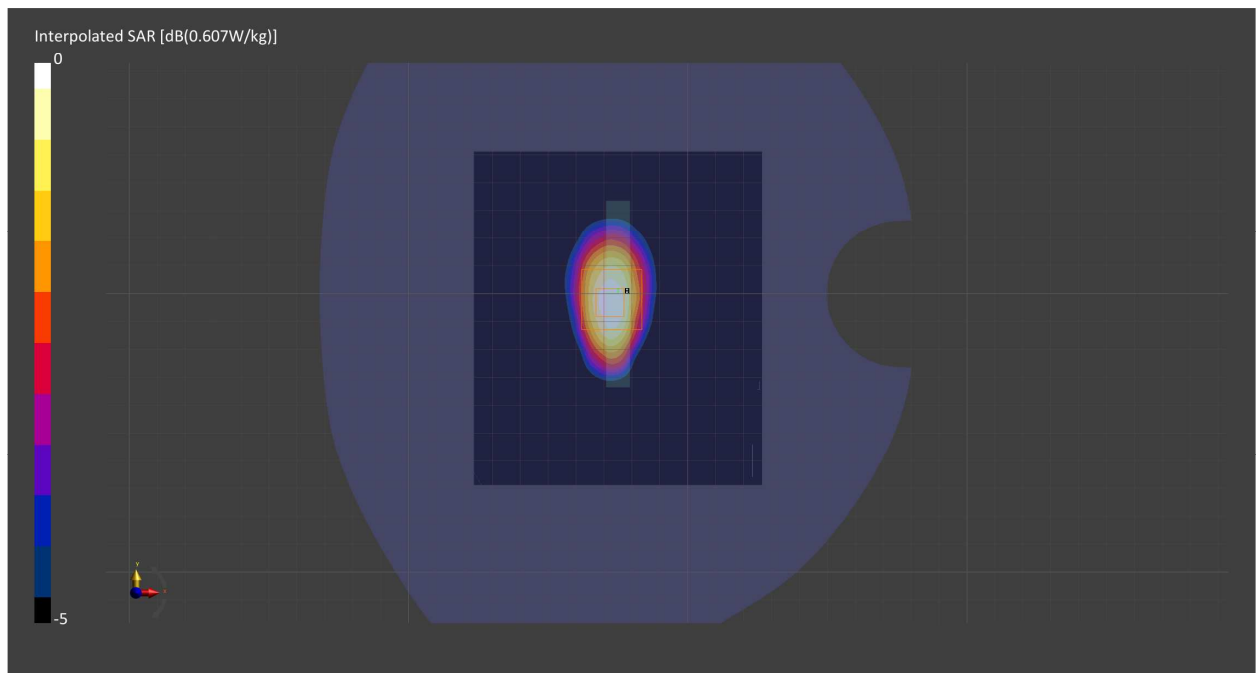
Probe Calibration Date	EX3DV4 - SN7709 2022-02-25	Phantom	Twin-SAM V8.0 (30deg probe tilt) - SN2082
DAE Calibration Date	DAE4 Sn1714 2022-02-23	TSL	HBBL-600-10000

Scans Setup

	Area Scan	Zoom Scan
Grid Extents [mm]	103.2 x 120.0	30.0 x 30.0 x 30.0
Grid Steps [mm]	8.6 x 15.0	6.0 x 6.0 x 1.5
Sensor Surface [mm]	3.0	1.4
Graded Grid	Yes	Yes
M2/M1 [%]		81.9
Dist 3dB Peak [mm]		11.8

Measurement Results

	Area Scan	Zoom Scan
psSAR1g [W/Kg]	0.330	0.333
psSAR10g [W/Kg]	0.183	0.186
Power Drift [dB]	-0.01	-0.05



Measurement Report for Band 2, UTRA/FDD, CHEEK, Normal, Main

Exposure Conditions

Band	Band 2, UTRA/FDD	TSL Permittivity	38.8
Frequency [MHz] Channel Number	1880.0 9400	TSL Conductivity [S/m]	1.47
Group UID	WCDMA 10011-CAB	Phantom Section TSL	RightHead HSL
Conversion Factor	8.51	Test Distance [mm]	0.00
Communication Configuration	UMTS-FDD (WCDMA)		

Hardware Setup

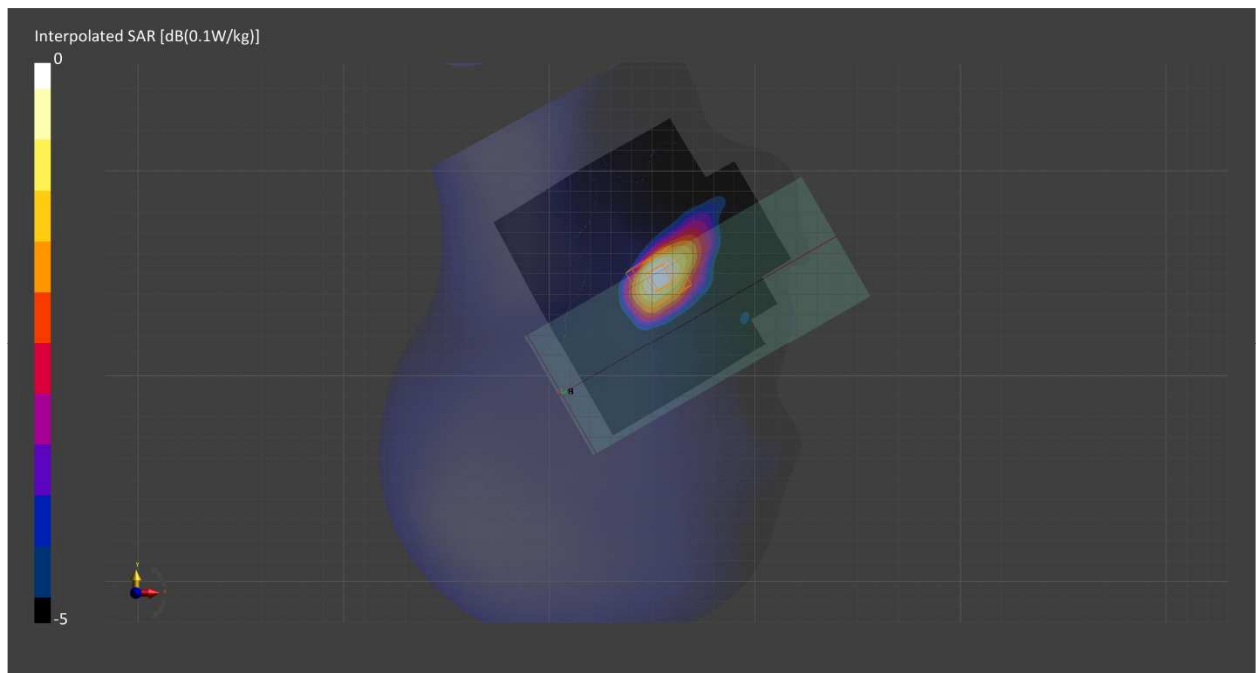
Probe Calibration Date	EX3DV4 - SN7709 2022-02-25	Phantom	Twin-SAM V8.0 (30deg probe tilt) - SN2082
DAE Calibration Date	DAE4 Sn1714 2022-02-23	TSL	HBBL-600-10000

Scans Setup

	Area Scan	Zoom Scan
Grid Extents [mm]	120.0 x 120.0	30.0 x 30.0 x 30.0
Grid Steps [mm]	15.0 x 15.0	6.0 x 6.0 x 1.5
Sensor Surface [mm]	3.0	1.4
Graded Grid	Yes	Yes
M2/M1 [%]		89.3
Dist 3dB Peak [mm]		> 15.0

Measurement Results

	Area Scan	Zoom Scan
psSAR1g [W/Kg]	0.041	0.040
psSAR10g [W/Kg]	0.023	0.024
Power Drift [dB]	-0.21	-0.05



Measurement Report for Band 2, UTRA/FDD, BACK, Normal, Main

Exposure Conditions

Band	Band 2, UTRA/FDD	TSL Permittivity	38.5
Frequency [MHz] Channel Number	1880.0 9400	TSL Conductivity [S/m]	1.43
Group UID	WCDMA 10011-CAB	Phantom Section TSL	Flat HSL
Conversion Factor	7.94	Test Distance [mm]	10.00
Communication Configuration	UMTS-FDD (WCDMA)		

Hardware Setup

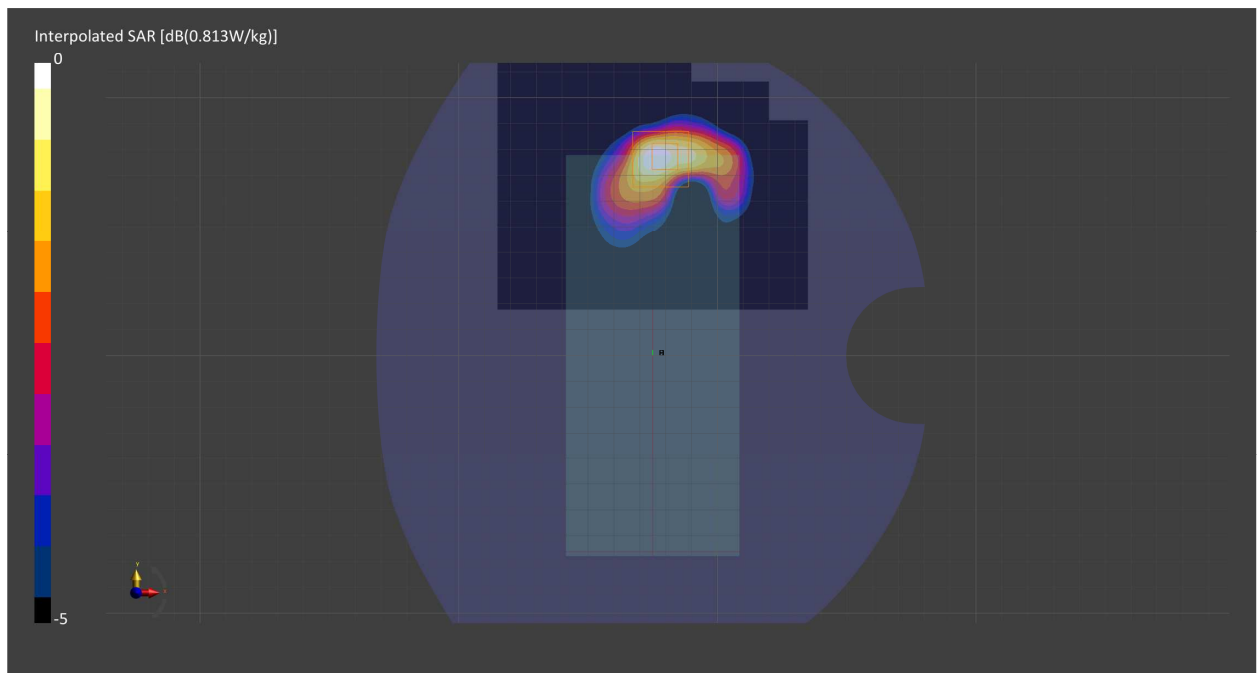
Probe Calibration Date	EX3DV4 - SN7549 2022-02-21	Phantom	Twin-SAM V8.0 (30deg probe tilt) - SN2084
DAE Calibration Date	DAE4 Sn1715 2022-02-22	TSL	HBBL-600-10000

Scans Setup

	Area Scan	Zoom Scan
Grid Extents [mm]	120.0 x 120.0	30.0 x 30.0 x 30.0
Grid Steps [mm]	15.0 x 15.0	6.0 x 6.0 x 1.5
Sensor Surface [mm]	3.0	1.4
Graded Grid	Yes	Yes
M2/M1 [%]		80.8
Dist 3dB Peak [mm]		9.4

Measurement Results

	Area Scan	Zoom Scan
psSAR1g [W/Kg]	0.393	0.429
psSAR10g [W/Kg]	0.212	0.224
Power Drift [dB]	-0.02	-0.00



Measurement Report for Band 2, UTRA/FDD, EDGE BOTTOM, Normal, Main

Exposure Conditions

Band	Band 2, UTRA/FDD	TSL Permittivity	38.5
Frequency [MHz] Channel Number	1880.0 9400	TSL Conductivity [S/m]	1.43
Group UID	WCDMA 10011-CAB	Phantom Section TSL	Flat HSL
Conversion Factor	7.94	Test Distance [mm]	10.00
Communication Configuration	UMTS-FDD (WCDMA)		

Hardware Setup

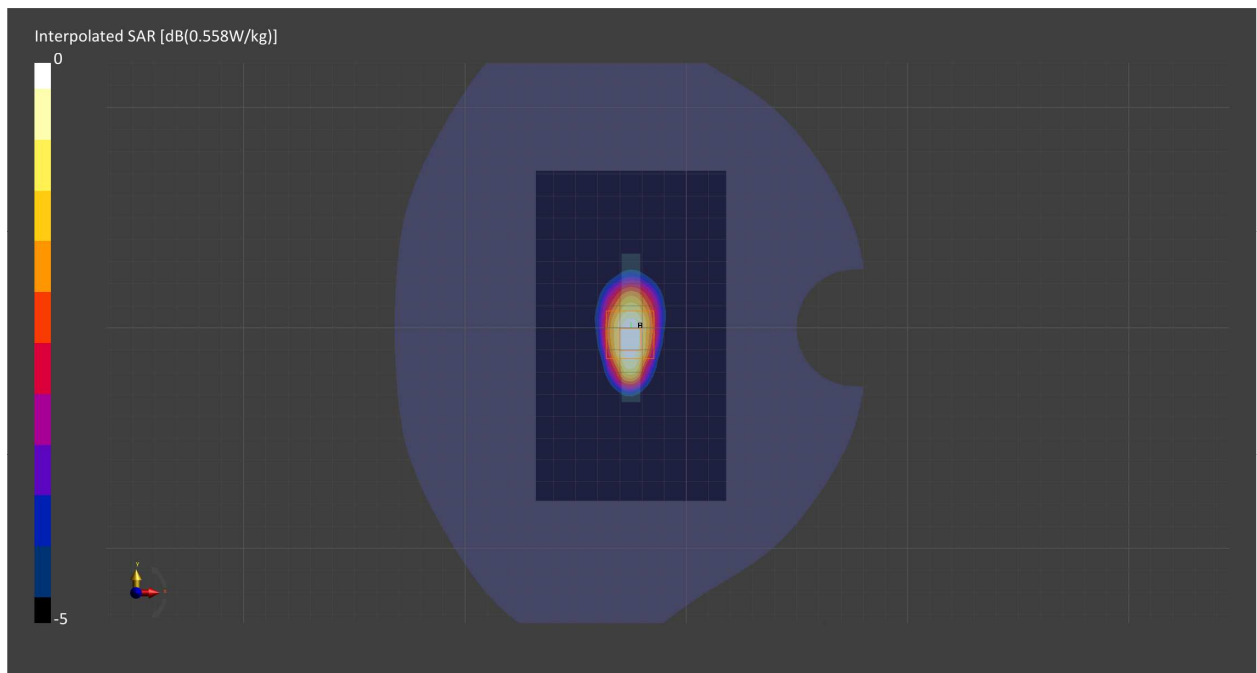
Probe Calibration Date	EX3DV4 - SN7549 2022-02-21	Phantom	Twin-SAM V8.0 (30deg probe tilt) - SN2084
DAE Calibration Date	DAE4 Sn1715 2022-02-22	TSL	HBBL-600-10000

Scans Setup

	Area Scan	Zoom Scan
Grid Extents [mm]	86.0 x 150.0	30.0 x 30.0 x 30.0
Grid Steps [mm]	8.6 x 15.0	6.0 x 6.0 x 1.5
Sensor Surface [mm]	3.0	1.4
Graded Grid	Yes	Yes
M2/M1 [%]		81.7
Dist 3dB Peak [mm]		10.7

Measurement Results

	Area Scan	Zoom Scan
psSAR1g [W/Kg]	0.453	0.471
psSAR10g [W/Kg]	0.248	0.259
Power Drift [dB]	0.01	-0.01



Measurement Report for Band 4, UTRA/FDD, CHEEK, Normal, Main

Exposure Conditions

Band	Band 4, UTRA/FDD	TSL Permittivity	38.5
Frequency [MHz] Channel Number	1732.6 1413	TSL Conductivity [S/m]	1.38
Group UID	WCDMA 10011-CAB	Phantom Section TSL	RightHead HSL
Conversion Factor	8.89	Test Distance [mm]	0.00
Communication Configuration	UMTS-FDD (WCDMA)		

Hardware Setup

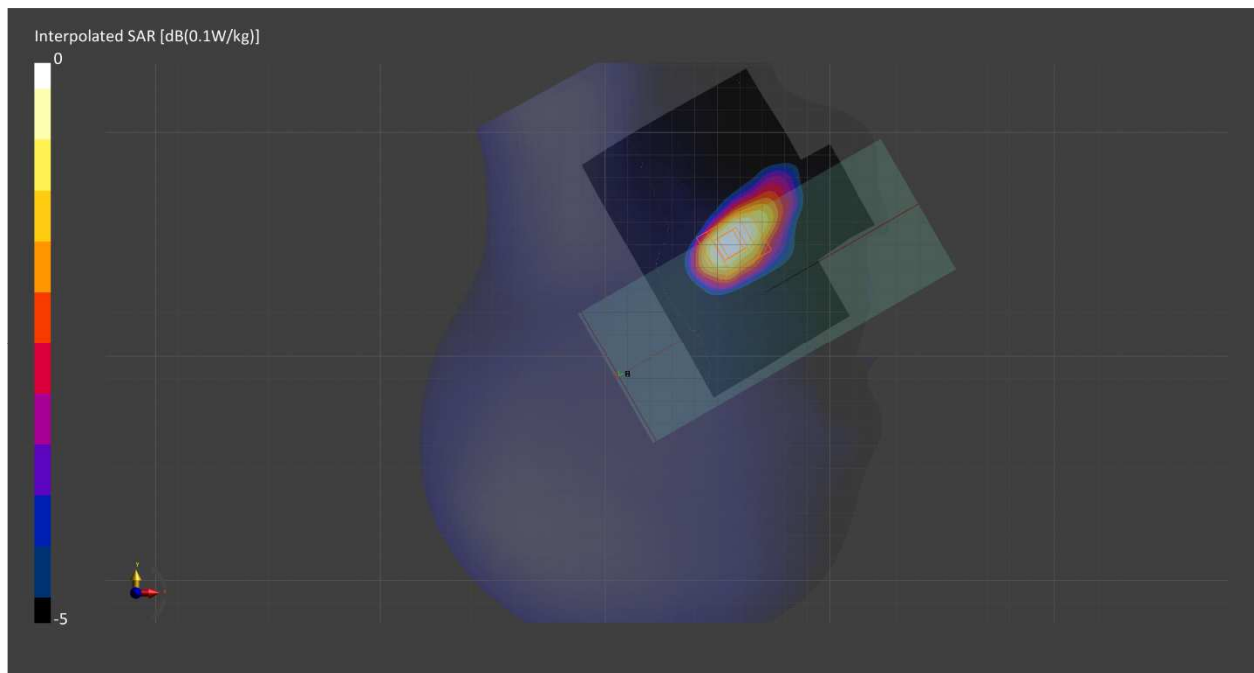
Probe Calibration Date	EX3DV4 - SN7711 2022-03-11	Phantom	Twin-SAM V5.0 (30deg probe tilt) - SN1742
DAE Calibration Date	DAE4 Sn1716 2022-03-08	TSL	HBBL-600-10000

Scans Setup

	Area Scan	Zoom Scan
Grid Extents [mm]	120.0 x 120.0	50.0 x 50.0 x 30.0
Grid Steps [mm]	15.0 x 15.0	6.0 x 6.0 x 1.5
Sensor Surface [mm]	3.0	1.4
Graded Grid	Yes	Yes
M2/M1 [%]		90.6
Dist 3dB Peak [mm]		> 25.0

Measurement Results

	Area Scan	Zoom Scan
psSAR1g [W/Kg]	0.031	0.030
psSAR10g [W/Kg]	0.018	0.019
Power Drift [dB]	-0.23	-0.12



Measurement Report for Band 4, UTRA/FDD, BACK, Normal, Main

Exposure Conditions

Band	Band 4, UTRA/FDD	TSL Permittivity	38.5
Frequency [MHz] Channel Number	1732.6 1413	TSL Conductivity [S/m]	1.38
Group UID	WCDMA 10011-CAB	Phantom Section TSL	Flat HSL
Conversion Factor	8.89	Test Distance [mm]	10.00
Communication Configuration	UMTS-FDD (WCDMA)		

Hardware Setup

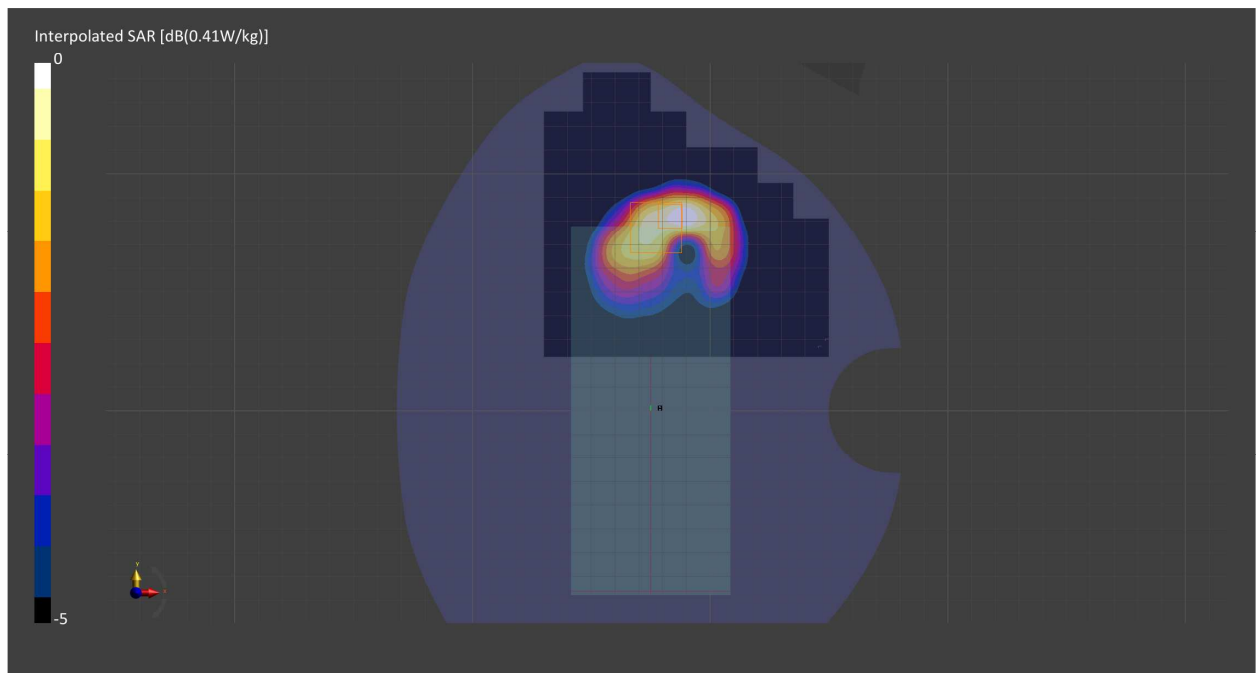
Probe Calibration Date	EX3DV4 - SN7711 2022-03-11	Phantom	Twin-SAM V5.0 (30deg probe tilt) - SN1742
DAE Calibration Date	DAE4 Sn1716 2022-03-08	TSL	HBBL-600-10000

Scans Setup

	Area Scan	Zoom Scan
Grid Extents [mm]	120.0 x 120.0	30.0 x 30.0 x 30.0
Grid Steps [mm]	15.0 x 15.0	6.0 x 6.0 x 1.5
Sensor Surface [mm]	3.0	1.4
Graded Grid	Yes	Yes
M2/M1 [%]		83.7
Dist 3dB Peak [mm]		10.7

Measurement Results

	Area Scan	Zoom Scan
psSAR1g [W/Kg]	0.221	0.235
psSAR10g [W/Kg]	0.126	0.134
Power Drift [dB]	0.00	-0.01



Measurement Report for Band 4, UTRA/FDD, EDGE BOTTOM, Normal, Main

Exposure Conditions

Band	Band 4, UTRA/FDD	TSL Permittivity	38.5
Frequency [MHz] Channel Number	1732.6 1413	TSL Conductivity [S/m]	1.38
Group UID	WCDMA 10011-CAB	Phantom Section TSL	Flat HSL
Conversion Factor	8.89	Test Distance [mm]	10.00
Communication Configuration	UMTS-FDD (WCDMA)		

Hardware Setup

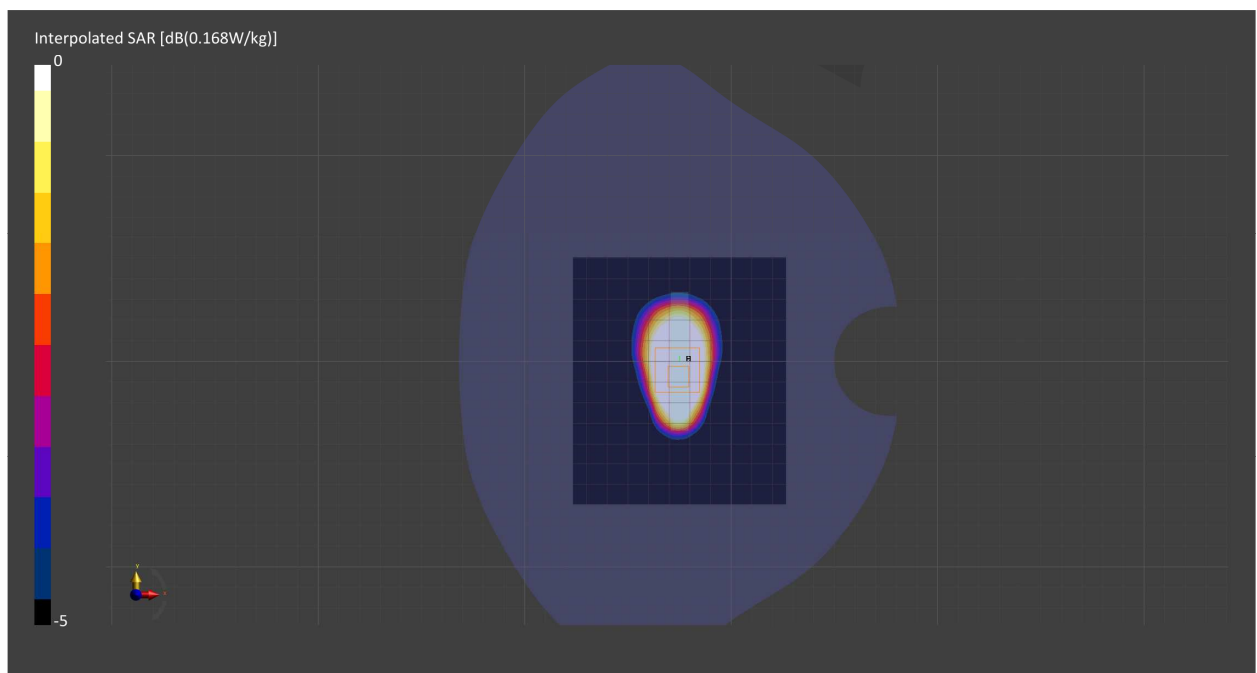
Probe Calibration Date	EX3DV4 - SN7711 2022-03-11	Phantom	Twin-SAM V5.0 (30deg probe tilt) - SN1742
DAE Calibration Date	DAE4 Sn1716 2022-03-08	TSL	HBBL-600-10000

Scans Setup

	Area Scan	Zoom Scan
Grid Extents [mm]	103.2 x 120.0	30.0 x 30.0 x 30.0
Grid Steps [mm]	8.6 x 15.0	6.0 x 6.0 x 1.5
Sensor Surface [mm]	3.0	1.4
Graded Grid	Yes	Yes
M2/M1 [%]		82.9
Dist 3dB Peak [mm]		10.3

Measurement Results

	Area Scan	Zoom Scan
psSAR1g [W/Kg]	0.273	0.281
psSAR10g [W/Kg]	0.149	0.154
Power Drift [dB]	0.04	-0.01



Measurement Report for Band 2, E-UTRA/FDD, CHEEK, Normal, Main

Exposure Conditions

Band	Band 2, E-UTRA/FDD	TSL Permittivity	38.5
Frequency [MHz] Channel Number	1880.0 18900	TSL Conductivity [S/m]	1.43
Group UID	LTE-FDD 10297-AAD	Phantom Section TSL	RightHead HSL
Conversion Factor	7.94	Test Distance [mm]	0.00
Communication Configuration	LTE-FDD (SC-FDMA, 50% RB, 20 MHz, QPSK) RBPosition:High AntennaCfg:SISO		

Hardware Setup

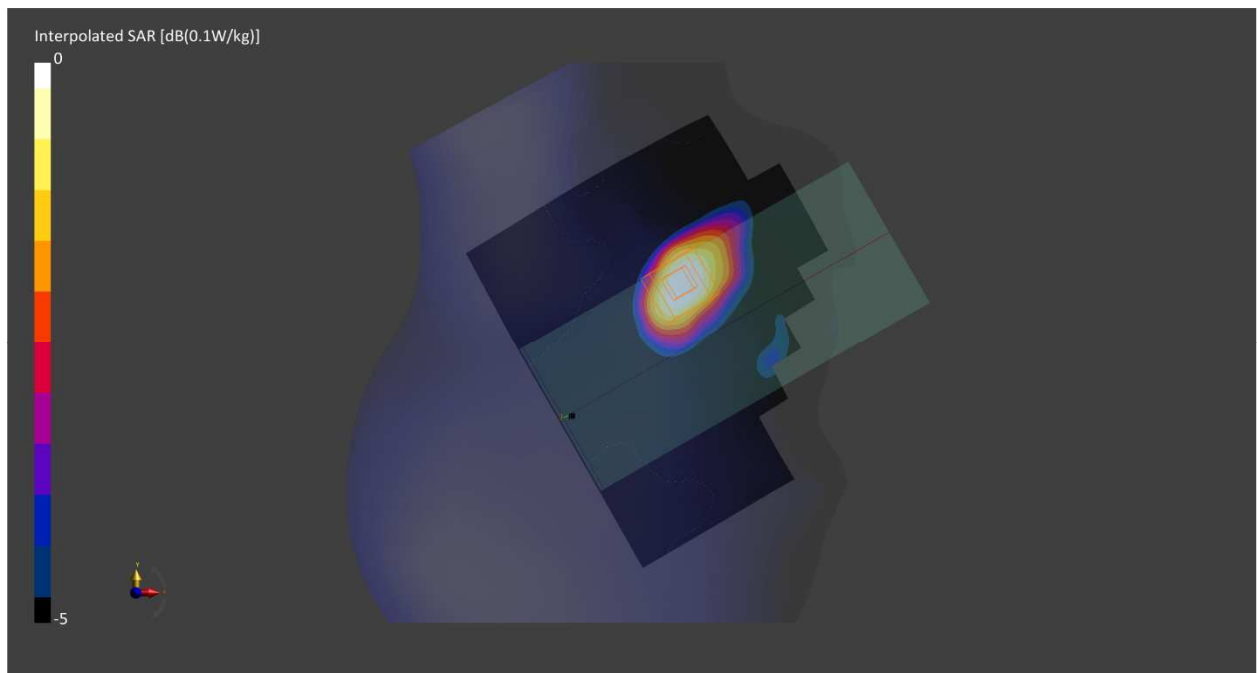
Probe Calibration Date	EX3DV4 - SN7549 2022-02-21	Phantom	Twin-SAM V8.0 (30deg probe tilt) - SN2084
DAE Calibration Date	DAE4 Sn1715 2022-02-22	TSL	HBBL-600-10000

Scans Setup

	Area Scan	Zoom Scan
Grid Extents [mm]	150.0 x 150.0	30.0 x 30.0 x 30.0
Grid Steps [mm]	15.0 x 15.0	6.0 x 6.0 x 1.5
Sensor Surface [mm]	3.0	1.4
Graded Grid	Yes	Yes
M2/M1 [%]		86.6
Dist 3dB Peak [mm]		> 15.0

Measurement Results

	Area Scan	Zoom Scan
psSAR1g [W/Kg]	0.033	0.037
psSAR10g [W/Kg]	0.019	0.022
Power Drift [dB]	-0.01	0.03



Measurement Report for Band 2, E-UTRA/FDD, BACK, Normal, Main

Exposure Conditions

Band	Band 2, E-UTRA/FDD	TSL Permittivity	38.5
Frequency [MHz] Channel Number	1880.0 18900	TSL Conductivity [S/m]	1.43
Group UID	LTE-FDD 10297-AAD	Phantom Section TSL	Flat HSL
Conversion Factor	7.94	Test Distance [mm]	10.00
Communication Configuration	LTE-FDD (SC-FDMA, 50% RB, 20 MHz, QPSK) RBPosition:High AntennaCfg:SISO		

Hardware Setup

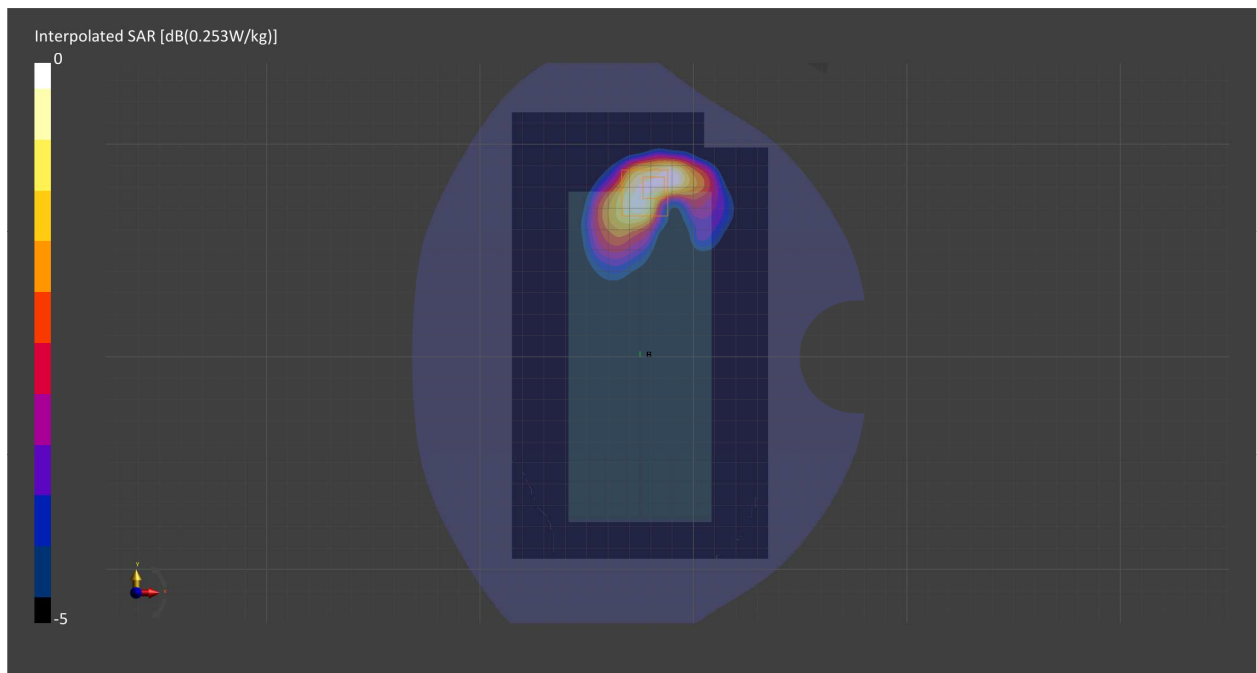
Probe Calibration Date	EX3DV4 - SN7549 2022-02-21	Phantom	Twin-SAM V8.0 (30deg probe tilt) - SN2084
DAE Calibration Date	DAE4 Sn1715 2022-02-22	TSL	HBBL-600-10000

Scans Setup

	Area Scan	Zoom Scan
Grid Extents [mm]	120.0 x 210.0	30.0 x 30.0 x 30.0
Grid Steps [mm]	15.0 x 15.0	6.0 x 6.0 x 1.5
Sensor Surface [mm]	3.0	1.4
Graded Grid	Yes	Yes
M2/M1 [%]		82.9
Dist 3dB Peak [mm]		10.2

Measurement Results

	Area Scan	Zoom Scan
psSAR1g [W/Kg]	0.200	0.227
psSAR10g [W/Kg]	0.116	0.125
Power Drift [dB]	0.00	-0.00



Measurement Report for Band 2, E-UTRA/FDD, EDGE BOTTOM, Normal, Main

Exposure Conditions

Band	Band 2, E-UTRA/FDD	TSL Permittivity	38.5
Frequency [MHz] Channel Number	1880.0 18900	TSL Conductivity [S/m]	1.43
Group UID	LTE-FDD 10297-AAD	Phantom Section TSL	Flat HSL
Conversion Factor	7.94	Test Distance [mm]	10.00
Communication Configuration	LTE-FDD (SC-FDMA, 50% RB, 20 MHz, QPSK) RBPosition:High AntennaCfg:SISO		

Hardware Setup

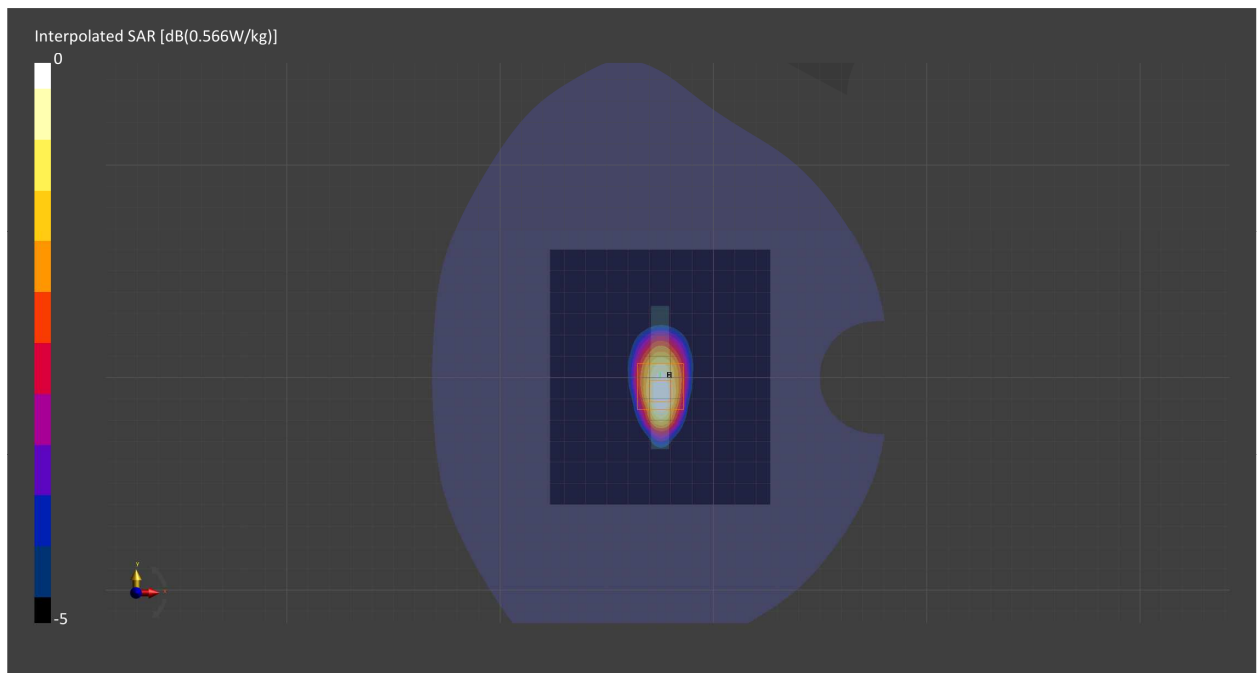
Probe Calibration Date	EX3DV4 - SN7549 2022-02-21	Phantom	Twin-SAM V8.0 (30deg probe tilt) - SN2084
DAE Calibration Date	DAE4 Sn1715 2022-02-22	TSL	HBBL-600-10000

Scans Setup

	Area Scan	Zoom Scan
Grid Extents [mm]	103.2 x 120.0	30.0 x 30.0 x 30.0
Grid Steps [mm]	8.6 x 15.0	6.0 x 6.0 x 1.5
Sensor Surface [mm]	3.0	1.4
Graded Grid	Yes	Yes
M2/M1 [%]		80.9
Dist 3dB Peak [mm]		9.9

Measurement Results

	Area Scan	Zoom Scan
psSAR1g [W/Kg]	0.453	0.473
psSAR10g [W/Kg]	0.245	0.257
Power Drift [dB]	0.02	0.00



Measurement Report for Band 4, E-UTRA/FDD, CHEEK, Normal, Main

Exposure Conditions

Band	Band 4, E-UTRA/FDD	TSL Permittivity	38.5
Frequency [MHz] Channel Number	1732.5 20175	TSL Conductivity [S/m]	1.38
Group UID	LTE-FDD 10297-AAD	Phantom Section TSL	RightHead HSL
Conversion Factor	8.89	Test Distance [mm]	0.00
Communication Configuration	LTE-FDD (SC-FDMA, 50% RB, 20 MHz, QPSK) RBPosition:High AntennaCfg:SISO		

Hardware Setup

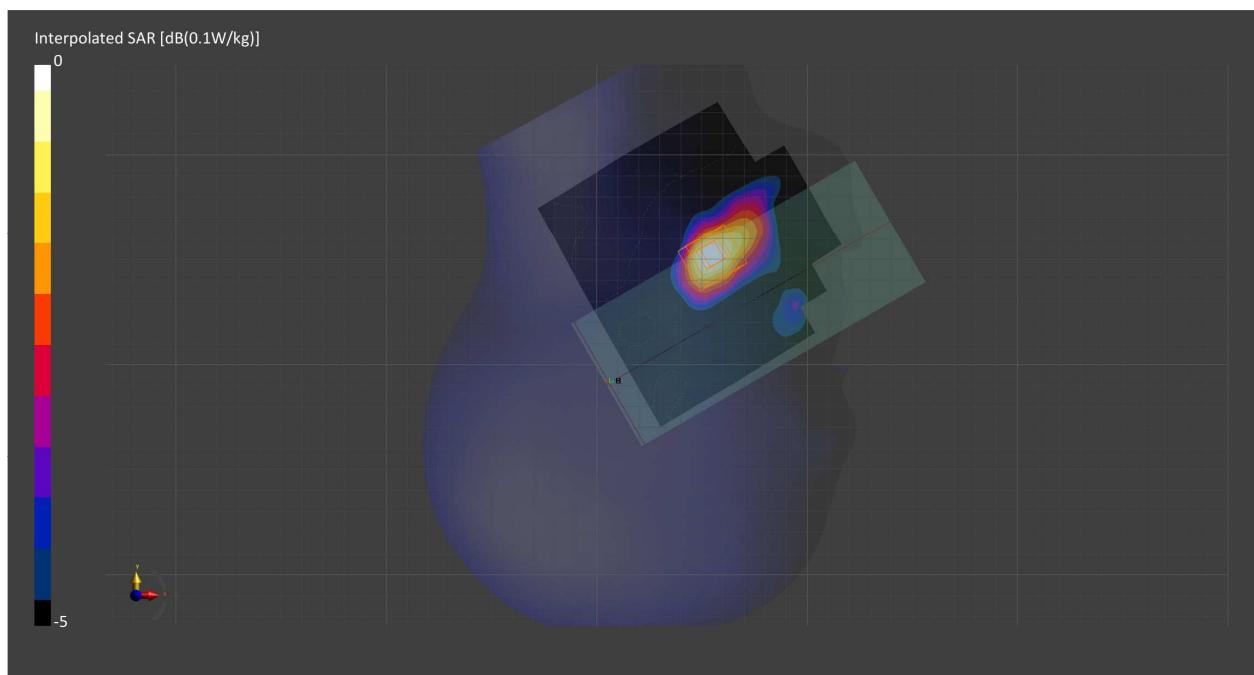
Probe Calibration Date	EX3DV4 - SN7711 2022-03-11	Phantom	Twin-SAM V5.0 (30deg probe tilt) - SN1742
DAE Calibration Date	DAE4 Sn1716 2022-03-08	TSL	HBBL-600-10000

Scans Setup

	Area Scan	Zoom Scan
Grid Extents [mm]	120.0 x 120.0	30.0 x 30.0 x 30.0
Grid Steps [mm]	15.0 x 15.0	6.0 x 6.0 x 1.5
Sensor Surface [mm]	3.0	1.4
Graded Grid	Yes	Yes
M2/M1 [%]		90.6
Dist 3dB Peak [mm]		> 15.0

Measurement Results

	Area Scan	Zoom Scan
psSAR1g [W/Kg]	0.034	0.038
psSAR10g [W/Kg]	0.019	0.023
Power Drift [dB]	-0.13	-0.05



Measurement Report for Band 4, E-UTRA/FDD, BACK, Normal, Main

Exposure Conditions

Band	Band 4, E-UTRA/FDD	TSL Permittivity	38.5
Frequency [MHz] Channel Number	1732.5 20175	TSL Conductivity [S/m]	1.38
Group UID	LTE-FDD 10297-AAD	Phantom Section TSL	Flat HSL
Conversion Factor	8.89	Test Distance [mm]	10.00
Communication Configuration	LTE-FDD (SC-FDMA, 50% RB, 20 MHz, QPSK) RBPosition:High AntennaCfg:SISO		

Hardware Setup

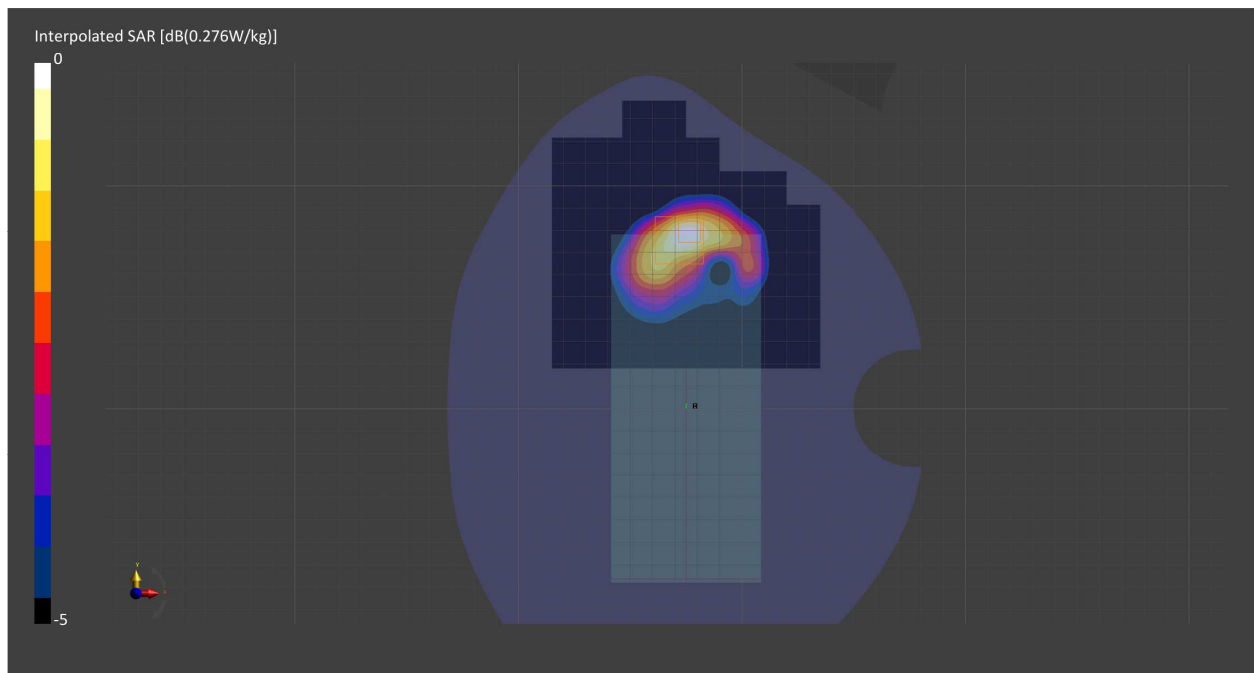
Probe Calibration Date	EX3DV4 - SN7711 2022-03-11	Phantom	Twin-SAM V5.0 (30deg probe tilt) - SN1742
DAE Calibration Date	DAE4 Sn1716 2022-03-08	TSL	HBBL-600-10000

Scans Setup

	Area Scan	Zoom Scan
Grid Extents [mm]	120.0 x 120.0	30.0 x 30.0 x 30.0
Grid Steps [mm]	15.0 x 15.0	6.0 x 6.0 x 1.5
Sensor Surface [mm]	3.0	1.4
Graded Grid	Yes	Yes
M2/M1 [%]		83.4
Dist 3dB Peak [mm]		11.9

Measurement Results

	Area Scan	Zoom Scan
psSAR1g [W/Kg]	0.222	0.226
psSAR10g [W/Kg]	0.126	0.131
Power Drift [dB]	0.01	-0.01



Measurement Report for Band 4, E-UTRA/FDD, EDGE BOTTOM, Normal, Main

Exposure Conditions

Band	Band 4, E-UTRA/FDD	TSL Permittivity	38.5
Frequency [MHz] Channel Number	1732.5 20175	TSL Conductivity [S/m]	1.38
Group UID	LTE-FDD 10169-CAE	Phantom Section TSL	Flat HSL
Conversion Factor	8.89	Test Distance [mm]	10.00
Communication Configuration	LTE-FDD (SC-FDMA, 1 RB, 20 MHz, QPSK) RBPosition:High AntennaCfg:SISO		

Hardware Setup

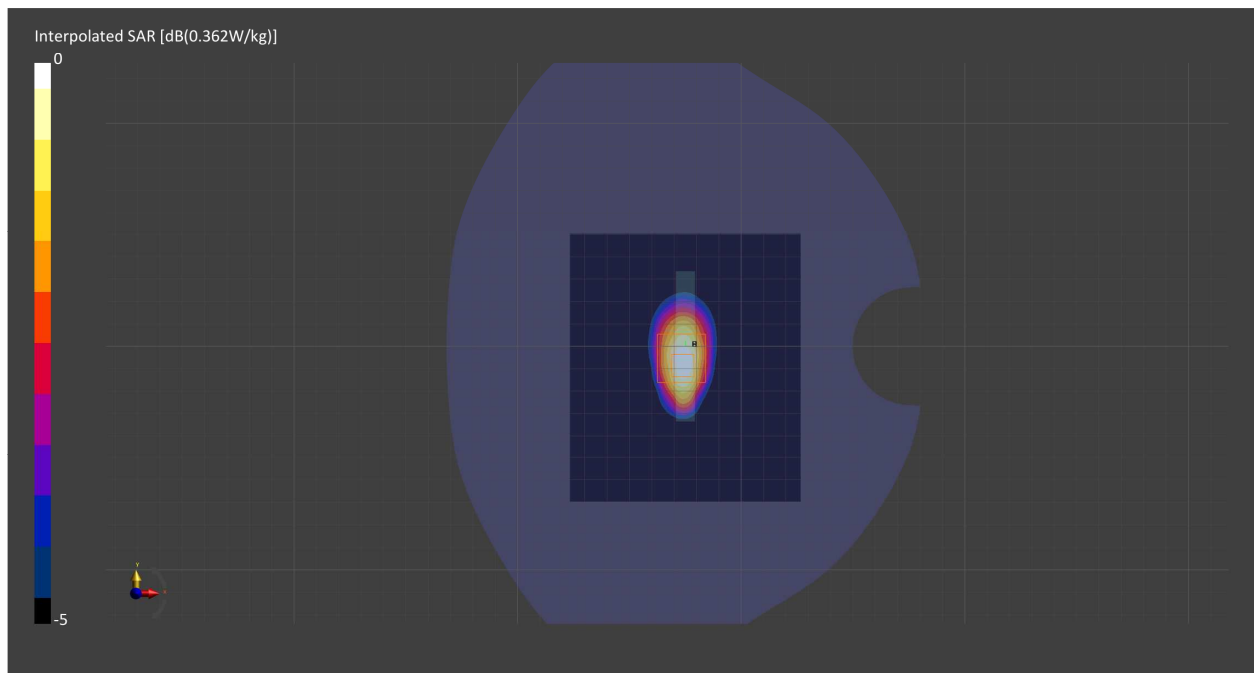
Probe Calibration Date	EX3DV4 - SN7711 2022-03-11	Phantom	Twin-SAM V5.0 (30deg probe tilt) - SN1742
DAE Calibration Date	DAE4 Sn1716 2022-03-08	TSL	HBBL-600-10000

Scans Setup

	Area Scan	Zoom Scan
Grid Extents [mm]	103.2 x 120.0	30.0 x 30.0 x 30.0
Grid Steps [mm]	8.6 x 15.0	6.0 x 6.0 x 1.5
Sensor Surface [mm]	3.0	1.4
Graded Grid	Yes	Yes
M2/M1 [%]		81.9
Dist 3dB Peak [mm]		10.8

Measurement Results

	Area Scan	Zoom Scan
psSAR1g [W/Kg]	0.291	0.301
psSAR10g [W/Kg]	0.160	0.165
Power Drift [dB]	0.01	-0.02



Measurement Report for Band 12, E-UTRA/FDD, CHEEK, Normal, Main

Exposure Conditions

Band	Band 12, E-UTRA/FDD	TSL Permittivity	43.2
Frequency [MHz] Channel Number	707.5 23095	TSL Conductivity [S/m]	0.903
Group UID	LTE-FDD 10154-CAG	Phantom Section TSL	LeftHead HSL
Conversion Factor	10.25	Test Distance [mm]	0.00
Communication Configuration	LTE-FDD (SC-FDMA, 50% RB, 10 MHz, QPSK) RBPosition:High AntennaCfg:SISO		

Hardware Setup

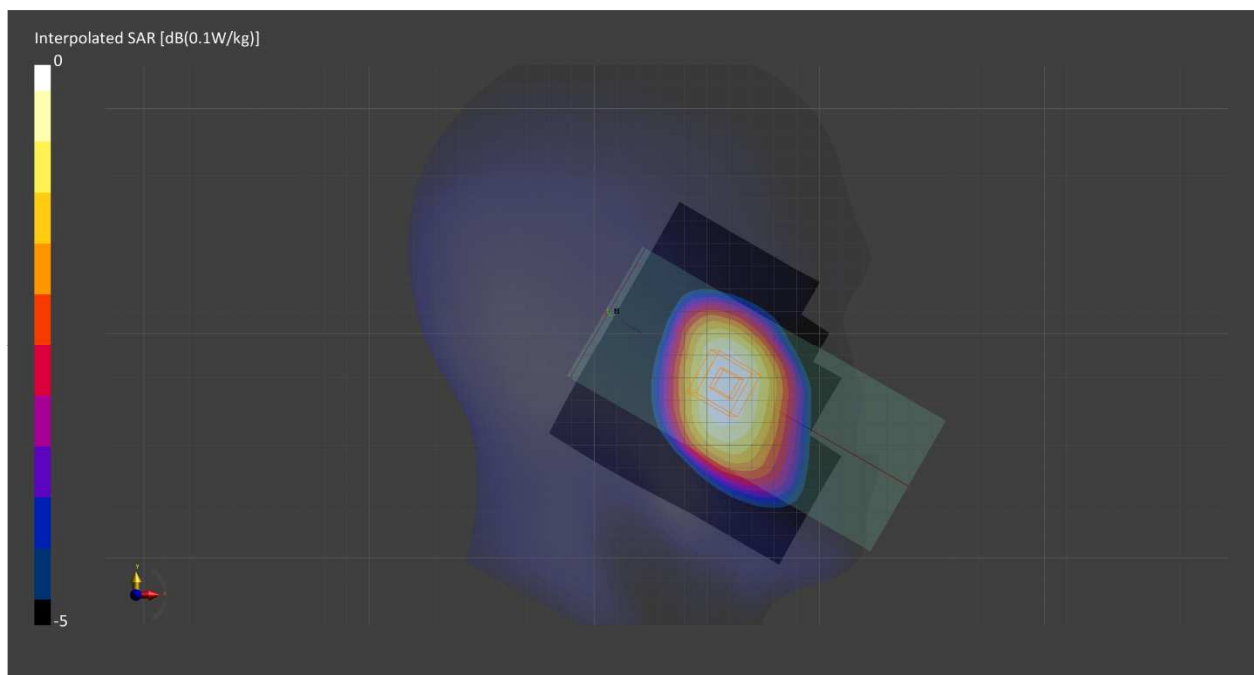
Probe Calibration Date	EX3DV4 - SN7709 2022-02-25	Phantom	Twin-SAM V8.0 (30deg probe tilt) - SN2082
DAE Calibration Date	DAE4 Sn1714 2022-02-23	TSL	HBBL-600-10000

Scans Setup

	Area Scan	Zoom Scan
Grid Extents [mm]	120.0 x 120.0	30.0 x 30.0 x 30.0
Grid Steps [mm]	15.0 x 15.0	6.0 x 6.0 x 1.5
Sensor Surface [mm]	3.0	1.4
Graded Grid	Yes	Yes
M2/M1 [%]		94.2
Dist 3dB Peak [mm]		> 15.0

Measurement Results

	Area Scan	Zoom Scan
psSAR1g [W/Kg]	0.064	0.068
psSAR10g [W/Kg]	0.045	0.053
Power Drift [dB]	-0.02	0.02



Measurement Report for Band 12, E-UTRA/FDD, BACK, Normal, Main

Exposure Conditions

Band	Band 12, E-UTRA/FDD	TSL Permittivity	43.2
Frequency [MHz] Channel Number	707.5 23095	TSL Conductivity [S/m]	0.903
Group UID	LTE-FDD 10154-CAG	Phantom Section TSL	Flat HSL
Conversion Factor	10.25	Test Distance [mm]	10.00
Communication Configuration	LTE-FDD (SC-FDMA, 50% RB, 10 MHz, QPSK) RBPosition:High AntennaCfg:SISO		

Hardware Setup

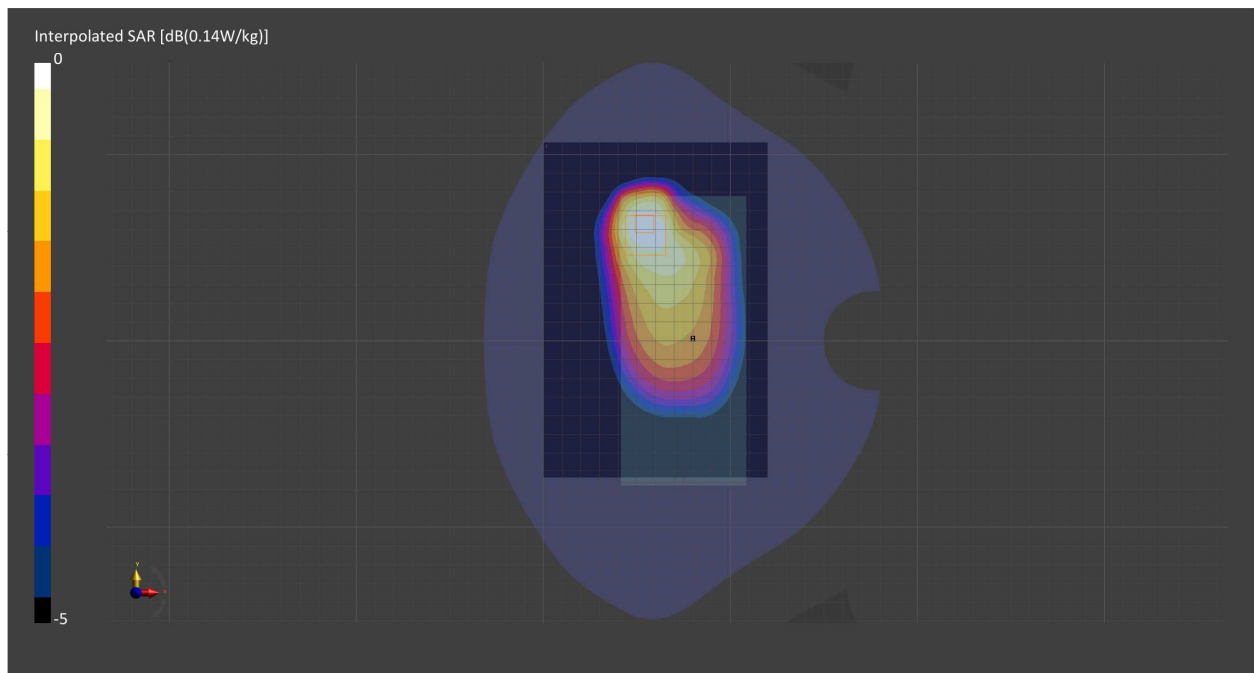
Probe Calibration Date	EX3DV4 - SN7709 2022-02-25	Phantom	Twin-SAM V8.0 (30deg probe tilt) - SN2082
DAE Calibration Date	DAE4 Sn1714 2022-02-23	TSL	HBBL-600-10000

Scans Setup

	Area Scan	Zoom Scan
Grid Extents [mm]	120.0 x 180.0	30.0 x 30.0 x 30.0
Grid Steps [mm]	15.0 x 15.0	6.0 x 6.0 x 1.5
Sensor Surface [mm]	3.0	1.4
Graded Grid	Yes	Yes
M2/M1 [%]		83.2
Dist 3dB Peak [mm]		16.7

Measurement Results

	Area Scan	Zoom Scan
psSAR1g [W/Kg]	0.124	0.127
psSAR10g [W/Kg]	0.085	0.079
Power Drift [dB]	-0.05	0.00



Measurement Report for WLAN 2.4GHz, CHEEK, Main, Normal

Exposure Conditions

Band	WLAN 2.4GHz	TSL Permittivity	37.9
Frequency [MHz] Channel Number	2437.0 6	TSL Conductivity [S/m]	1.81
Group UID	WLAN 10415-AAA	Phantom Section TSL	RightHead HSL
Conversion Factor	8.15	Test Distance [mm]	0.00
Communication Configuration	IEEE 802.11b WiFi 2.4 GHz (DSSS, 1 Mbps, 99pc duty cycle)		

Hardware Setup

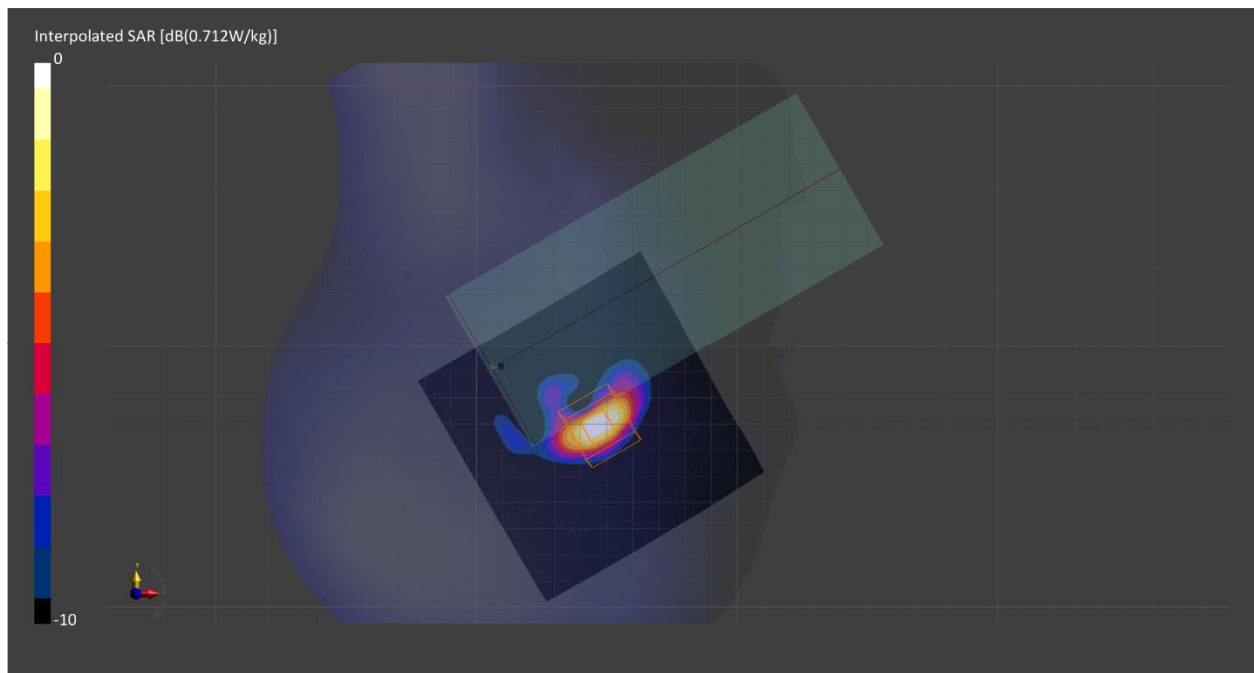
Probe Calibration Date	EX3DV4 - SN7711 2022-03-11	Phantom	Twin-SAM V5.0 (30deg probe tilt) - SN1742
DAE Calibration Date	DAE4 Sn1716 2022-03-08	TSL Meas. Date	HBBL-600-10000 2022-Jul-29

Scans Setup

	Area Scan	Zoom Scan
Grid Extents [mm]	100.0 x 100.0	50.0 x 50.0 x 30.0
Grid Steps [mm]	10.0 x 10.0	5.0 x 5.0 x 1.5
Sensor Surface [mm]	3.0	1.4
Graded Grid	Yes	Yes
M2/M1 [%]		78.7
Dist 3dB Peak [mm]		6.0

Measurement Results

	Area Scan	Zoom Scan
psSAR1g [W/Kg]	0.457	0.473
psSAR10g [W/Kg]	0.171	0.170
Power Drift [dB]	-0.03	0.03



Measurement Report for WLAN 5GHz, BACK, Sub, Normal

Exposure Conditions

Band	WLAN 5GHz	TSL Permittivity	34.5
Frequency [MHz] Channel Number	5570.0 114	TSL Conductivity [S/m]	5.07
Group UID	WLAN 10554-AAD	Phantom Section TSL	Flat HSL
Conversion Factor	4.56	Test Distance [mm]	0.00
Communication Configuration	IEEE 802.11ac WiFi (160MHz, MCS0, 99pc duty cycle)		

Hardware Setup

Probe Calibration Date	EX3DV4 - SN7549 2022-02-21	Phantom	Twin-SAM V8.0 (30deg probe tilt) - SN2084
DAE Calibration Date	DAE4 Sn1715 2022-02-22	TSL Meas. Date	HBBL-600-10000 2022-Aug-01

Scans Setup

	Area Scan	Zoom Scan
Grid Extents [mm]	80.0 x 180.0	22.0 x 22.0 x 22.0
Grid Steps [mm]	10.0 x 10.0	3.4 x 3.4 x 1.2
Sensor Surface [mm]	3.0	1.4
Graded Grid	Yes	Yes
M2/M1 [%]		60.1
Dist 3dB Peak [mm]		3.5

Measurement Results

	Area Scan	Zoom Scan
psSAR1g [W/Kg]	0.995	1.56
psSAR10g [W/Kg]	0.292	0.331
Power Drift [dB]	-0.02	-0.11

