

2022-08-01 System Performance Check Report D5GHzV2 - SN1213

Summary

Dipole	D5GHzV2 - SN1213		
Frequency [MHz]	5250.0		
Phantom Section TSL	Flat HSL	Dev. Peak [%]	-1.5
Power [dBm]	17.0	Iso. Error [%]	-2.0

Exposure Conditions

Dipole Distance [mm]	10	TSL Permittivity	35.1
Conversion Factor	5.14	TSL Conductivity [S/m]	4.70

Hardware Setup

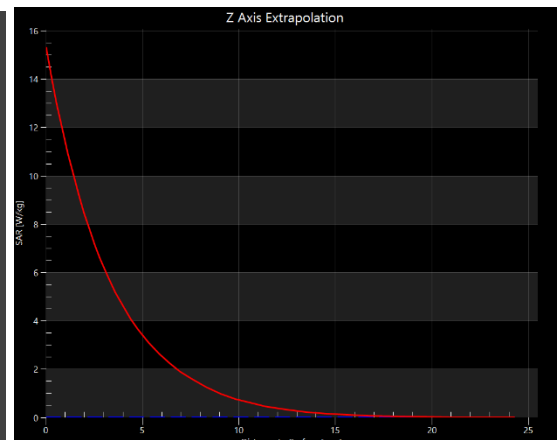
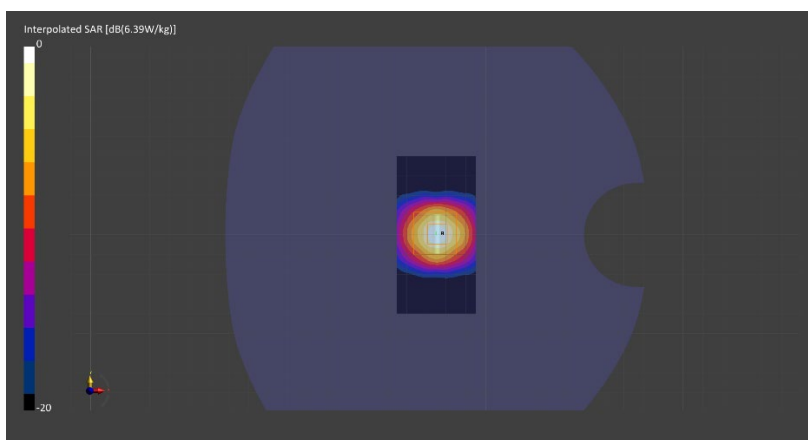
Probe Calibration Date	EX3DV4 - SN7549 2022-02-21	Phantom	Twin-SAM V8.0 (30deg probe tilt) - SN2084
DAE Calibration Date	DAE4 Sn1715 2022-02-22	TSL Meas. Date	HBBL-600-10000 2022-Aug-01

Scans Setup

	Area Scan	Zoom Scan
Grid Extents [mm]	40.0 x 80.0	22.0 x 22.0 x 22.0
Grid Steps [mm]	10.0 x 10.0	4.0 x 4.0 x 1.4
Sensor Surface [mm]	3.0	1.4
Graded Grid	Yes	Yes
M2/M1 [%]		65.0
Dist 3dB Peak [mm]		7.4

Measurement Results

	Area Scan	Zoom Scan
psSAR1g [W/Kg]	3.88	4.00
psSAR10g [W/Kg]	1.10	1.14
Power Drift [dB]	-0.07	-0.08



2022-08-01 System Performance Check Report D5GHzV2 - SN1213

Summary

Dipole	D5GHzV2 - SN1213		
Frequency [MHz]	5600.0		
Phantom Section TSL	Flat HSL	Dev. Peak [%]	3.6
Power [dBm]	17.0	Iso. Error [%]	-2.1

Exposure Conditions

Dipole Distance [mm]	10	TSL Permittivity	34.4
Conversion Factor	4.56	TSL Conductivity [S/m]	5.11

Hardware Setup

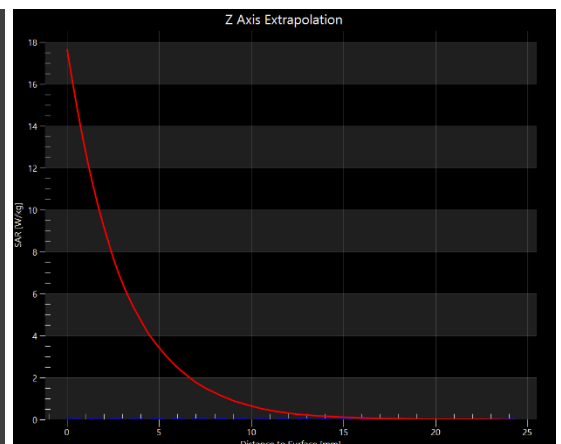
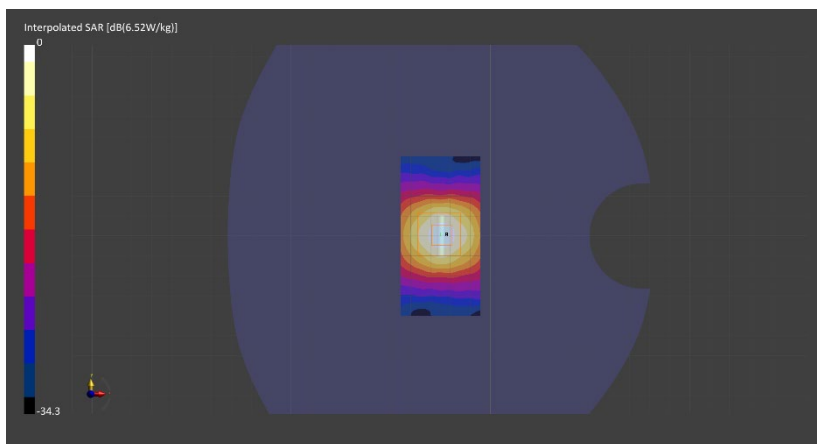
Probe Calibration Date	EX3DV4 - SN7549 2022-02-21	Phantom	Twin-SAM V8.0 (30deg probe tilt) - SN2084
DAE Calibration Date	DAE4 Sn1715 2022-02-22	TSL Meas. Date	HBBL-600-10000 2022-Aug-01

Scans Setup

	Area Scan	Zoom Scan
Grid Extents [mm]	40.0 x 80.0	22.0 x 22.0 x 22.0
Grid Steps [mm]	10.0 x 10.0	4.0 x 4.0 x 1.4
Sensor Surface [mm]	3.0	1.4
Graded Grid	Yes	Yes
M2/M1 [%]		62.0
Dist 3dB Peak [mm]		7.4

Measurement Results

	Area Scan	Zoom Scan
psSAR1g [W/Kg]	4.01	4.26
psSAR10g [W/Kg]	1.13	1.20
Power Drift [dB]	0.03	0.01



2022-08-02 System Performance Check Report D900V2 - SN1d180

Summary

Dipole	D900V2 - SN1d180		
Frequency [MHz]	900.0		
Phantom Section TSL	Flat HSL	Dev. Peak [%]	8.1
Power [dBm]	17.0	Iso. Error [%]	2.3

Exposure Conditions

Dipole Distance [mm]	15	TSL Permittivity	42.4
Conversion Factor	9.19	TSL Conductivity [S/m]	0.942

Hardware Setup

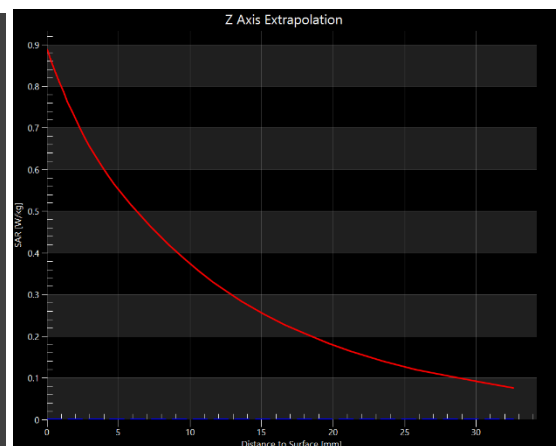
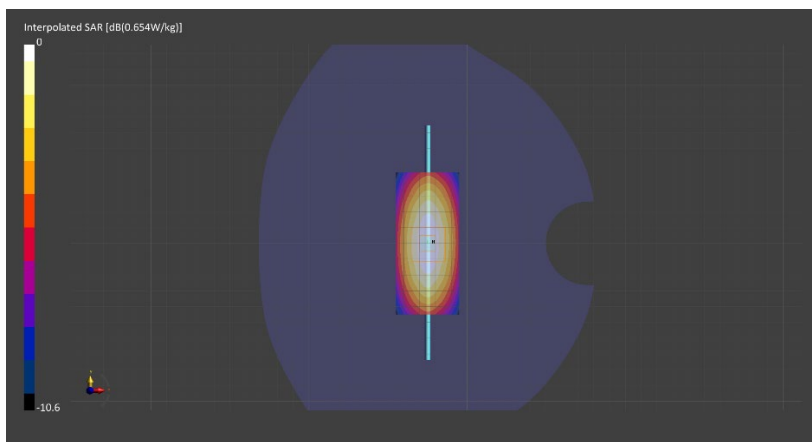
Probe Calibration Date	EX3DV4 - SN7549 2022-02-21	Phantom	Twin-SAM V8.0 (30deg probe tilt) - SN2084
DAE Calibration Date	DAE4 Sn1715 2022-02-22	TSL Meas. Date	HBBL-600-10000 2022-Aug-02

Scans Setup

	Area Scan	Zoom Scan
Grid Extents [mm]	40.0 x 90.0	30.0 x 30.0 x 30.0
Grid Steps [mm]	10.0 x 15.0	6.0 x 6.0 x 1.5
Sensor Surface [mm]	3.0	1.4
Graded Grid	Yes	Yes
M2/M1 [%]		86.0
Dist 3dB Peak [mm]		19.0

Measurement Results

	Area Scan	Zoom Scan
psSAR1g [W/Kg]	0.561	0.563
psSAR10g [W/Kg]	0.365	0.365
Power Drift [dB]	-0.01	0.01



2022-08-03 System Performance Check Report D1900V2 - SN5d202

Summary

Dipole	D1900V2 - SN5d202		
Frequency [MHz]	1900.0		
Phantom Section TSL	Flat HSL	Dev. Peak [%]	14.8
Power [dBm]	17.0	Iso. Error [%]	-2.0

Exposure Conditions

Dipole Distance [mm]	10	TSL Permittivity	38.5
Conversion Factor	7.94	TSL Conductivity [S/m]	1.44

Hardware Setup

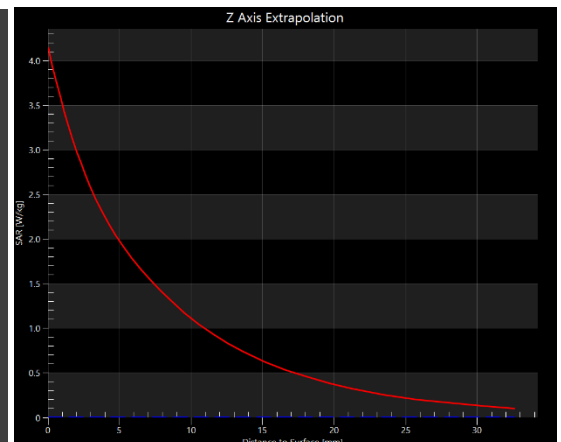
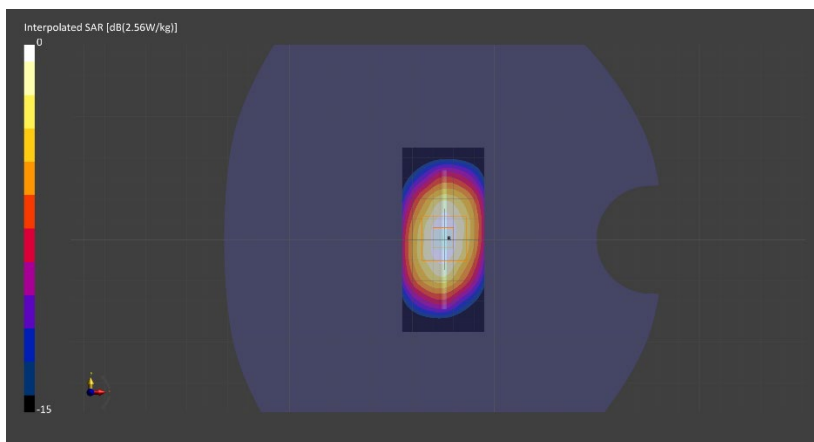
Probe Calibration Date	EX3DV4 - SN7549 2022-02-21	Phantom	Twin-SAM V8.0 (30deg probe tilt) - SN2084
DAE Calibration Date	DAE4 Sn1715 2022-02-22	TSL Meas. Date	HBBL-600-10000 2022-Aug-03

Scans Setup

	Area Scan	Zoom Scan
Grid Extents [mm]	40.0 x 90.0	30.0 x 30.0 x 30.0
Grid Steps [mm]	10.0 x 15.0	6.0 x 6.0 x 1.5
Sensor Surface [mm]	3.0	1.4
Graded Grid	Yes	Yes
M2/M1 [%]		78.6
Dist 3dB Peak [mm]		9.9

Measurement Results

	Area Scan	Zoom Scan
psSAR1g [W/Kg]	2.03	2.06
psSAR10g [W/Kg]	1.05	1.06
Power Drift [dB]	0.00	0.00



2022-07-26 System Performance Check Report D1900V2 - SN5d202

Summary

Dipole	D1900V2 - SN5d202		
Frequency [MHz]	1900.0		
Phantom Section TSL	Flat HSL	Dev. Peak [%]	8.2
Power [dBm]	17.0	Iso. Error [%]	2.9

Exposure Conditions

Dipole Distance [mm]	10	TSL Permittivity	38.7
Conversion Factor	8.51	TSL Conductivity [S/m]	1.45

Hardware Setup

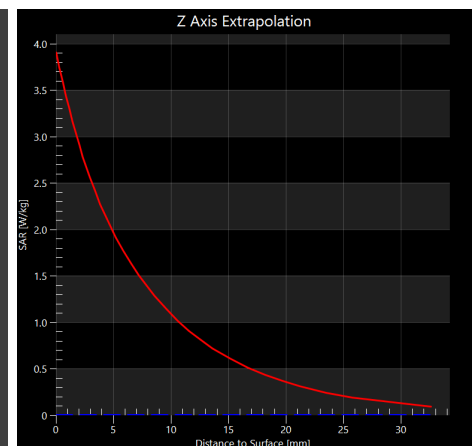
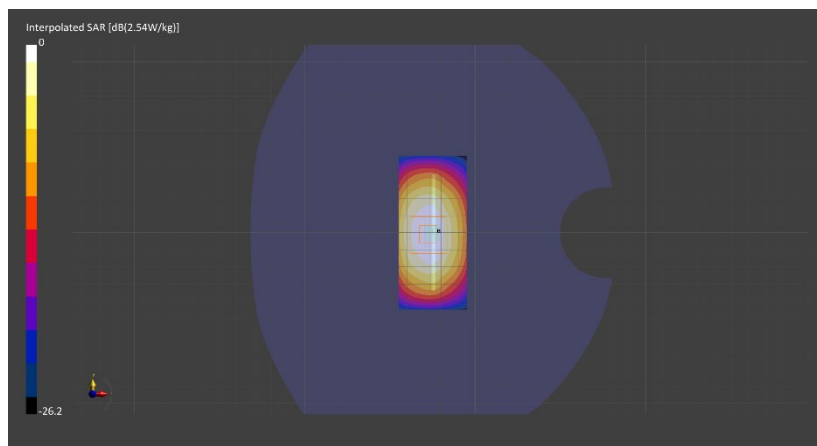
Probe Calibration Date	EX3DV4 - SN7709 2022-02-25	Phantom	Twin-SAM V8.0 (30deg probe tilt) - SN2082
DAE Calibration Date	DAE4 Sn1714 2022-02-23	TSL Meas. Date	HBBL-600-10000 2022-Jul-25

Scans Setup

	Area Scan	Zoom Scan
Grid Extents [mm]	40.0 x 90.0	30.0 x 30.0 x 30.0
Grid Steps [mm]	10.0 x 15.0	6.0 x 6.0 x 1.5
Sensor Surface [mm]	3.0	1.4
Graded Grid	Yes	Yes
M2/M1 [%]		80.9
Dist 3dB Peak [mm]		10.8

Measurement Results

	Area Scan	Zoom Scan
psSAR1g [W/Kg]	2.01	2.01
psSAR10g [W/Kg]	1.06	1.04
Power Drift [dB]	-0.00	0.01



2022-08-02 System Performance Check Report D750V3 - SN1139

Summary

Dipole	D750V3 - SN1139		
Frequency [MHz]	750.0		
Phantom Section TSL	Flat HSL	Dev. Peak [%]	5.7
Power [dBm]	17.0	Iso. Error [%]	3.1

Exposure Conditions

Dipole Distance [mm]	15	TSL Permittivity	43.0
Conversion Factor	10.25	TSL Conductivity [S/m]	0.921

Hardware Setup

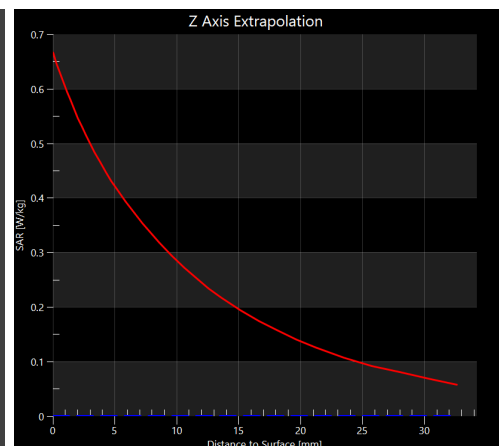
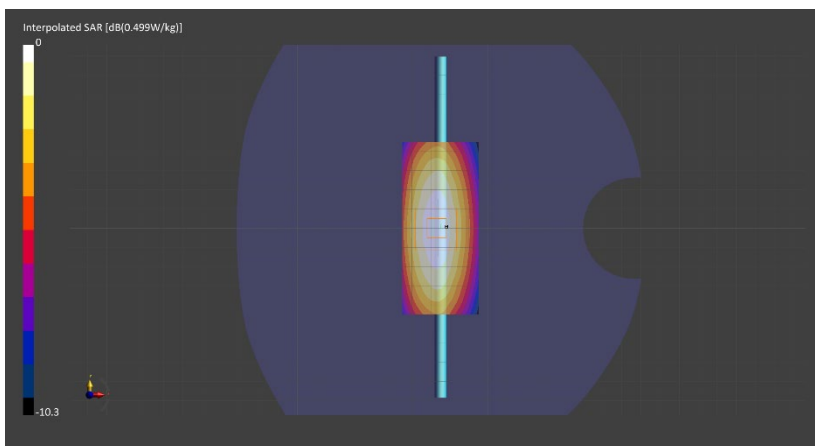
Probe Calibration Date	EX3DV4 - SN7709 2022-02-25	Phantom	Twin-SAM V8.0 (30deg probe tilt) - SN2082
DAE Calibration Date	DAE4 Sn1714 2022-02-23	TSL Meas. Date	HBBL-600-10000 2022-Aug-02

Scans Setup

	Area Scan	Zoom Scan
Grid Extents [mm]	40.0 x 90.0	30.0 x 30.0 x 30.0
Grid Steps [mm]	10.0 x 15.0	6.0 x 6.0 x 1.5
Sensor Surface [mm]	3.0	1.4
Graded Grid	Yes	Yes
M2/M1 [%]		86.7
Dist 3dB Peak [mm]		> 15.0

Measurement Results

	Area Scan	Zoom Scan
psSAR1g [W/Kg]	0.433	0.430
psSAR10g [W/Kg]	0.290	0.281
Power Drift [dB]	-0.00	-0.02



2022-07-27 System Performance Check Report D1750V2 - SN1136

Summary

Dipole	D1750V2 - SN1136		
Frequency [MHz]	1750.0		
Phantom Section TSL	Flat HSL	Dev. Peak [%]	10.3
Power [dBm]	17.0	Iso. Error [%]	0.6

Exposure Conditions

Dipole Distance [mm]	10	TSL Permittivity	38.3
Conversion Factor	8.89	TSL Conductivity [S/m]	1.40

Hardware Setup

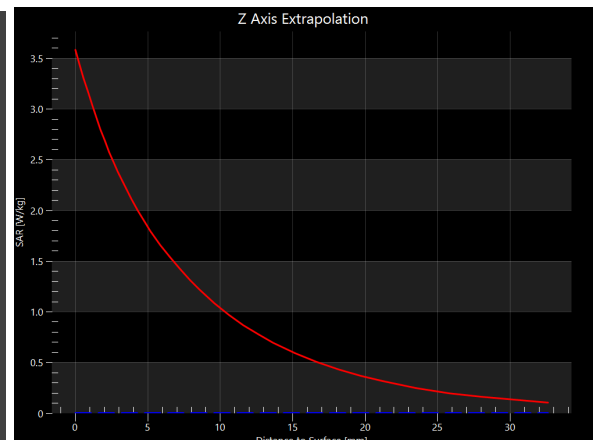
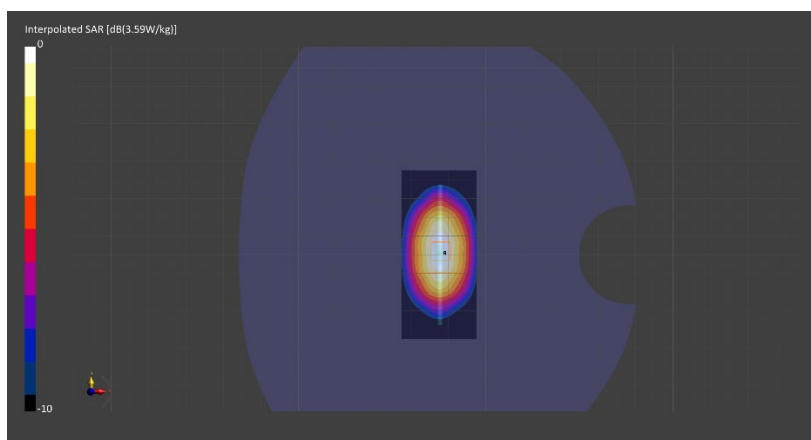
Probe Calibration Date	EX3DV4 - SN7711 2022-03-11	Phantom	Twin-SAM V5.0 (30deg probe tilt) - SN1742
DAE Calibration Date	DAE4 Sn1716 2022-03-08	TSL Meas. Date	HBBL-600-10000 2022-Jul-27

Scans Setup

	Area Scan	Zoom Scan
Grid Extents [mm]	40.0 x 90.0	30.0 x 30.0 x 30.0
Grid Steps [mm]	10.0 x 15.0	6.0 x 6.0 x 1.5
Sensor Surface [mm]	3.0	1.4
Graded Grid	Yes	Yes
M2/M1 [%]		81.2
Dist 3dB Peak [mm]		10.8

Measurement Results

	Area Scan	Zoom Scan
psSAR1g [W/Kg]	1.87	1.87
psSAR10g [W/Kg]	0.998	0.984
Power Drift [dB]	-0.01	0.02



2022-07-29 System Performance Check Report D2450V2 - SN963

Summary

Dipole	D2450V2 - SN963		
Frequency [MHz]	2450.0		
Phantom Section TSL	Flat HSL	Dev. Peak [%]	7.0
Power [dBm]	17.0	Iso. Error [%]	0.7

Exposure Conditions

Dipole Distance [mm]	10	TSL Permittivity	37.9
Conversion Factor	8.15	TSL Conductivity [S/m]	1.82

Hardware Setup

Probe Calibration Date	EX3DV4 - SN7711 2022-03-11	Phantom	Twin-SAM V5.0 (30deg probe tilt) - SN1742
DAE Calibration Date	DAE4 Sn1716 2022-03-08	TSL Meas. Date	HBBL-600-10000 2022-Jul-29

Scans Setup

	Area Scan	Zoom Scan
Grid Extents [mm]	40.0 x 80.0	30.0 x 30.0 x 30.0
Grid Steps [mm]	10.0 x 10.0	5.0 x 5.0 x 1.5
Sensor Surface [mm]	3.0	1.4
Graded Grid	Yes	Yes
M2/M1 [%]		79.6
Dist 3dB Peak [mm]		9.0

Measurement Results

	Area Scan	Zoom Scan
psSAR1g [W/Kg]	2.64	2.66
psSAR10g [W/Kg]	1.23	1.23
Power Drift [dB]	-0.00	0.02

