

Measurement Report for GSM 850, CHEEK, Normal, CELL Main1

Exposure Conditions

Band	GSM 850	TSL Permittivity	43.2
Frequency [MHz] Channel Number	836.6 190	TSL Conductivity [S/m]	0.937
Group UID	GSM 10090-DAC	Phantom Section TSL	RightHead HSL
Conversion Factor	10.14	Test Distance [mm]	0.00
Communication Configuration	GPRS-FDD (TDMA, GMSK, TN 0-4)		

Hardware Setup

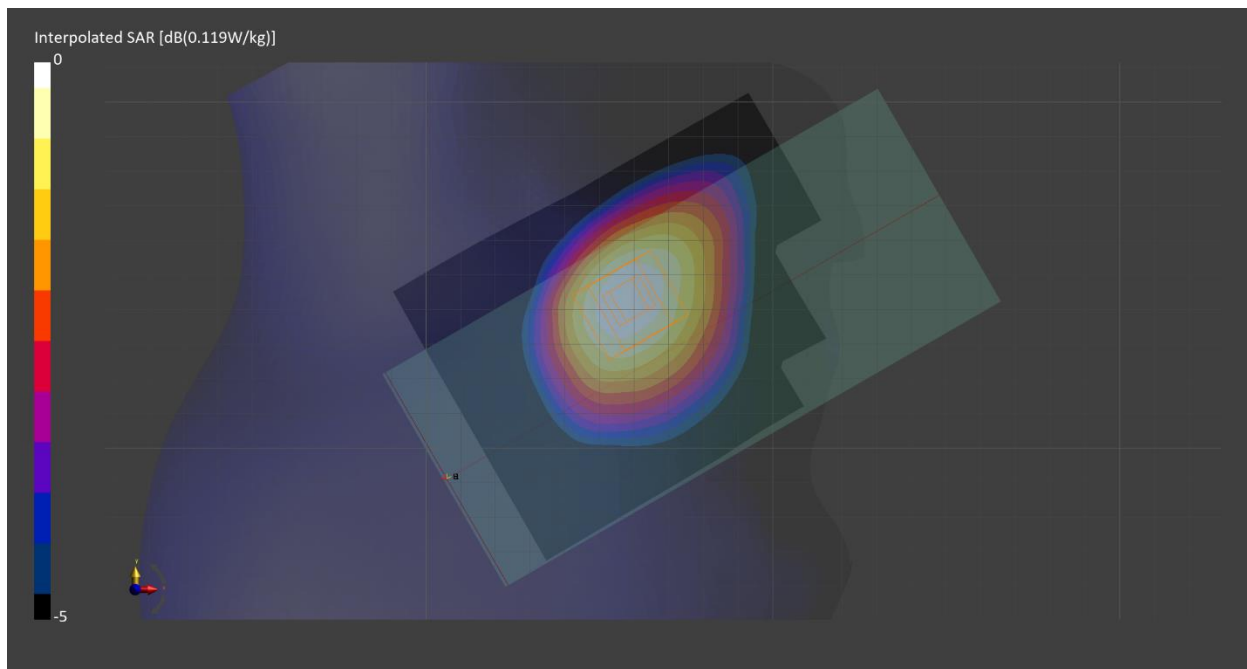
Probe Calibration Date	EX3DV4 - SN7710 2023-02-03	Phantom	Twin-SAM V8.0 (30deg probe tilt) - SN2082
DAE Calibration Date	DAE4 Sn1715 2023-01-23	TSL Meas. Date	HBBL600-10000V6 2023-Feb-20

Scans Setup

	Area Scan	Zoom Scan
Grid Extents [mm]	90.0 x 120.0	30.0 x 30.0 x 30.0
Grid Steps [mm]	15.0 x 15.0	6.0 x 6.0 x 1.5
Sensor Surface [mm]	3.0	1.4
Graded Grid	n/a	Yes
M2/M1 [%]		93.0
Dist 3dB Peak [mm]		21.7

Measurement Results

	Area Scan	Zoom Scan
psSAR1g [W/Kg]	0.103	0.107
psSAR10g [W/Kg]	0.070	0.083
Power Drift [dB]	0.02	-0.03



Measurement Report for GSM 850, BACK, Normal, CELL Main1

Exposure Conditions

Band	GSM 850	TSL Permittivity	43.2
Frequency [MHz] Channel Number	836.6 190	TSL Conductivity [S/m]	0.937
Group UID	GSM 10090-DAC	Phantom Section TSL	Flat HSL
Conversion Factor	10.14	Test Distance [mm]	10.00
Communication Configuration	GPRS-FDD (TDMA, GMSK, TN 0-4)		

Hardware Setup

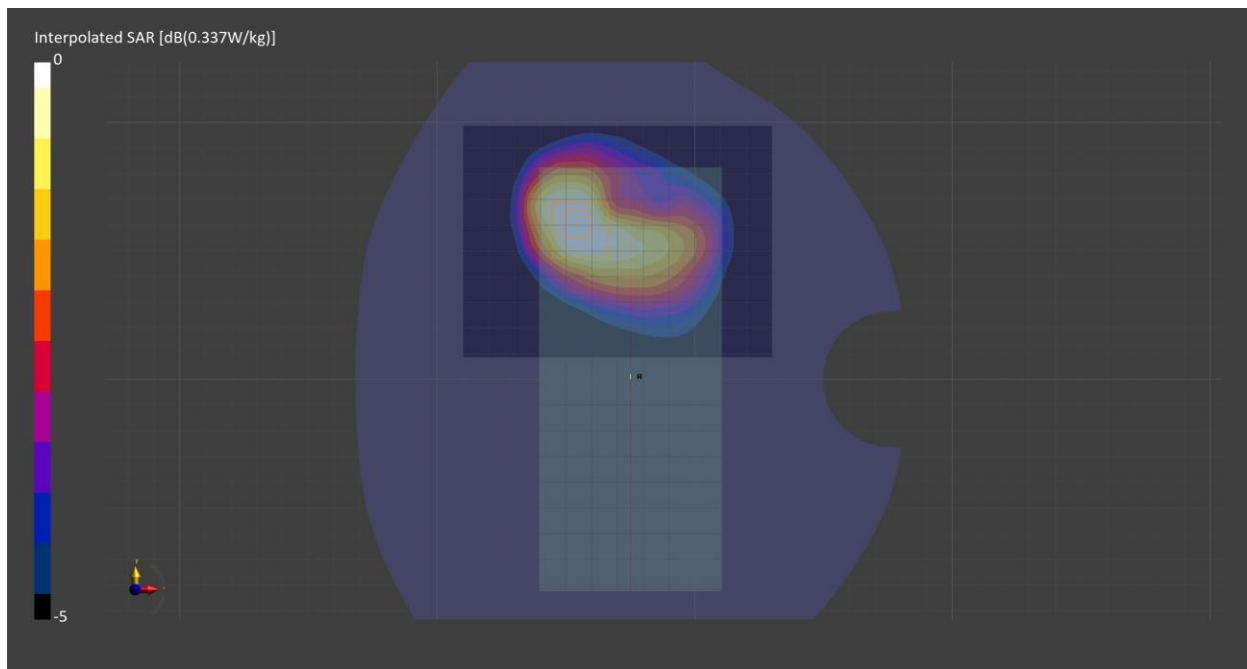
Probe Calibration Date	EX3DV4 - SN7710 2023-02-03	Phantom	Twin-SAM V8.0 (30deg probe tilt) - SN2082
DAE Calibration Date	DAE4 Sn1715 2023-01-23	TSL Meas. Date	HBBL600-10000V6 2023-Feb-20

Scans Setup

	Area Scan	Zoom Scan
Grid Extents [mm]	120.0 x 90.0	30.0 x 30.0 x 30.0
Grid Steps [mm]	15.0 x 15.0	6.0 x 6.0 x 1.5
Sensor Surface [mm]	3.0	1.4
Graded Grid	n/a	Yes
M2/M1 [%]		83.4
Dist 3dB Peak [mm]		16.7

Measurement Results

	Area Scan	Zoom Scan
psSAR1g [W/Kg]	0.294	0.307
psSAR10g [W/Kg]	0.197	0.194
Power Drift [dB]	0.06	0.02



Measurement Report for GSM 850, BACK, Normal, CELL Main1

Exposure Conditions

Band	GSM 850	TSL Permittivity	43.2
Frequency [MHz] Channel Number	836.6 190	TSL Conductivity [S/m]	0.937
Group UID	GSM 10024-DAC	Phantom Section TSL	Flat HSL
Conversion Factor	10.14	Test Distance [mm]	10.00
Communication Configuration	GPRS-FDD (TDMA, GMSK, TN 0-1)		

Hardware Setup

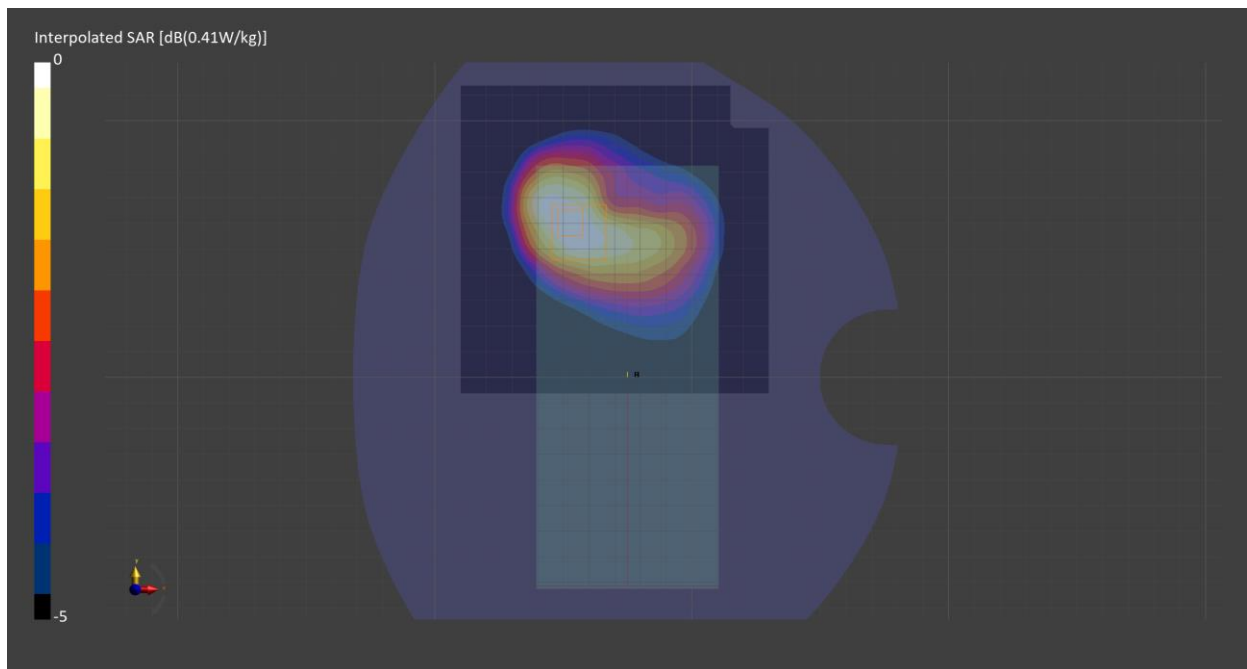
Probe Calibration Date	EX3DV4 - SN7710 2023-02-03	Phantom	Twin-SAM V8.0 (30deg probe tilt) - SN2082
DAE Calibration Date	DAE4 Sn1715 2023-01-23	TSL Meas. Date	HBBL600-10000V6 2023-Feb-20

Scans Setup

	Area Scan	Zoom Scan
Grid Extents [mm]	120.0 x 120.0	30.0 x 30.0 x 30.0
Grid Steps [mm]	15.0 x 15.0	6.0 x 6.0 x 1.5
Sensor Surface [mm]	3.0	1.4
Graded Grid	n/a	Yes
M2/M1 [%]		84.2
Dist 3dB Peak [mm]		17.0

Measurement Results

	Area Scan	Zoom Scan
psSAR1g [W/Kg]	0.360	0.396
psSAR10g [W/Kg]	0.243	0.249
Power Drift [dB]	-0.02	-0.07



Measurement Report for PCS 1900, CHEEK, Normal, CELL Main2

Exposure Conditions

Band	PCS 1900	TSL Permittivity	38.9
Frequency [MHz] Channel Number	1909.8 810	TSL Conductivity [S/m]	1.42
Group UID	GSM 10090-DAC	Phantom Section TSL	RightHead HSL
Conversion Factor	8.74	Test Distance [mm]	0.00
Communication Configuration	GPRS-FDD (TDMA, GMSK, TN 0-4)		

Hardware Setup

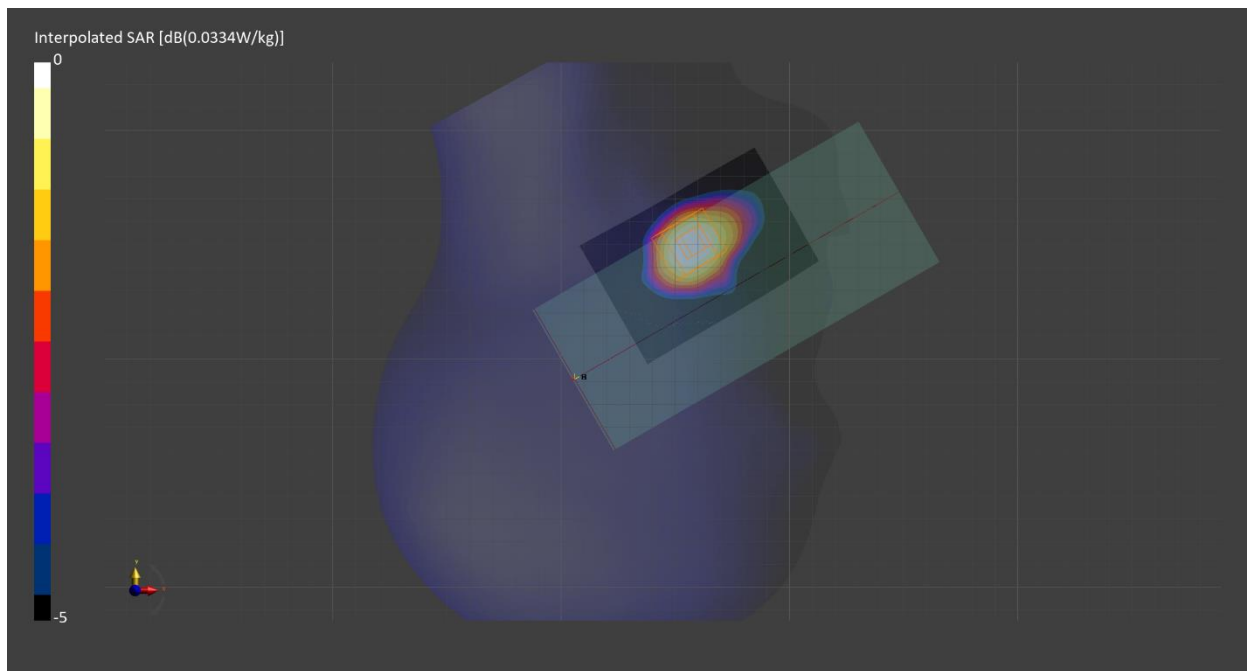
Probe Calibration Date	EX3DV4 - SN7709 2022-12-12	Phantom	Twin-SAM V8.0 (30deg probe tilt) - SN1742
DAE Calibration Date	DAE4 Sn1714 2022-11-23	TSL Meas. Date	HBBL1550-1950V3 2023-Feb-17

Scans Setup

	Area Scan	Zoom Scan
Grid Extents [mm]	60.0 x 90.0	30.0 x 30.0 x 30.0
Grid Steps [mm]	15.0 x 15.0	6.0 x 6.0 x 1.5
Sensor Surface [mm]	3.0	1.4
Graded Grid	n/a	Yes
M2/M1 [%]		84.3
Dist 3dB Peak [mm]		8.5

Measurement Results

	Area Scan	Zoom Scan
psSAR1g [W/Kg]	0.028	0.024
psSAR10g [W/Kg]	0.016	0.015
Power Drift [dB]	0.32	0.32



Measurement Report for PCS 1900, BACK, Normal, CELL Main2

Exposure Conditions

Band	PCS 1900	TSL Permittivity	38.9
Frequency [MHz] Channel Number	1909.8 810	TSL Conductivity [S/m]	1.42
Group UID	GSM 10090-DAC	Phantom Section TSL	Flat HSL
Conversion Factor	8.74	Test Distance [mm]	10.00
Communication Configuration	GPRS-FDD (TDMA, GMSK, TN 0-4)		

Hardware Setup

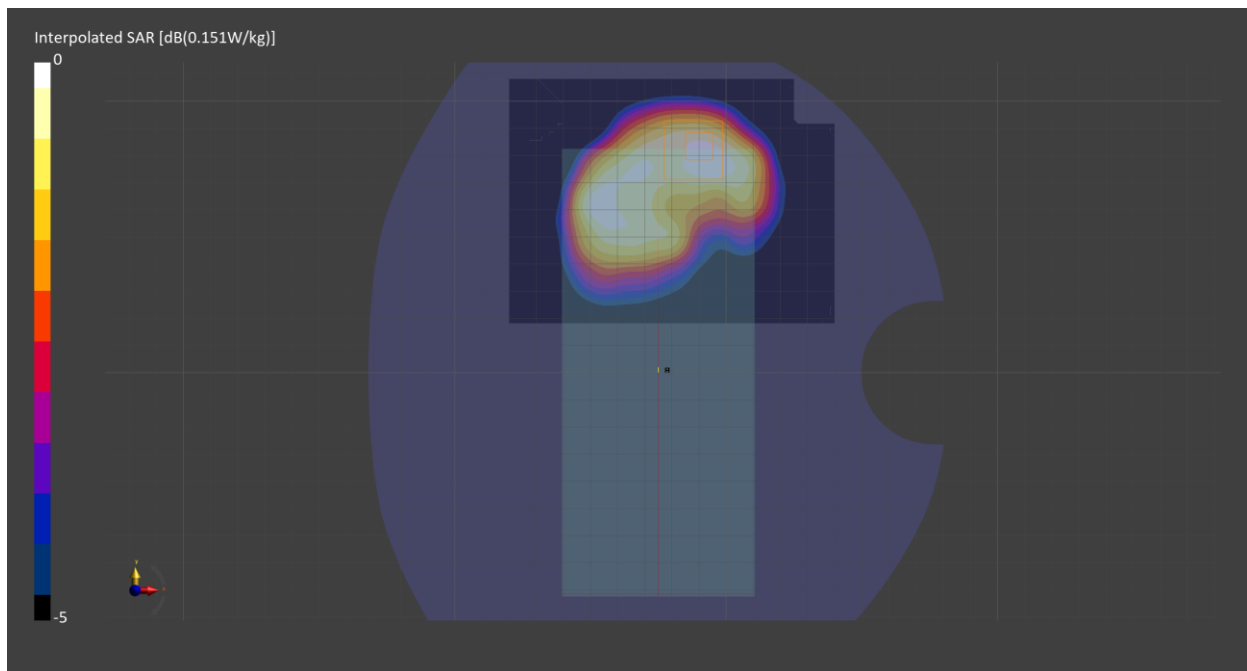
Probe Calibration Date	EX3DV4 - SN7709 2022-12-12	Phantom	Twin-SAM V8.0 (30deg probe tilt) - SN1742
DAE Calibration Date	DAE4 Sn1714 2022-11-23	TSL Meas. Date	HBBL1550-1950V3 2023-Feb-17

Scans Setup

	Area Scan	Zoom Scan
Grid Extents [mm]	120.0 x 90.0	30.0 x 30.0 x 30.0
Grid Steps [mm]	15.0 x 15.0	6.0 x 6.0 x 1.5
Sensor Surface [mm]	3.0	1.4
Graded Grid	n/a	Yes
M2/M1 [%]		83.3
Dist 3dB Peak [mm]		12.0

Measurement Results

	Area Scan	Zoom Scan
psSAR1g [W/Kg]	0.124	0.139
psSAR10g [W/Kg]	0.075	0.079
Power Drift [dB]	0.05	-0.01



Measurement Report for PCS 1900, EDGE BOTTOM, Normal, CELL Main2

Exposure Conditions

Band	PCS 1900	TSL Permittivity	38.9
Frequency [MHz] Channel Number	1909.8 810	TSL Conductivity [S/m]	1.42
Group UID	GSM 10090-DAC	Phantom Section TSL	Flat HSL
Conversion Factor	8.74	Test Distance [mm]	10.00
Communication Configuration	GPRS-FDD (TDMA, GMSK, TN 0-4)		

Hardware Setup

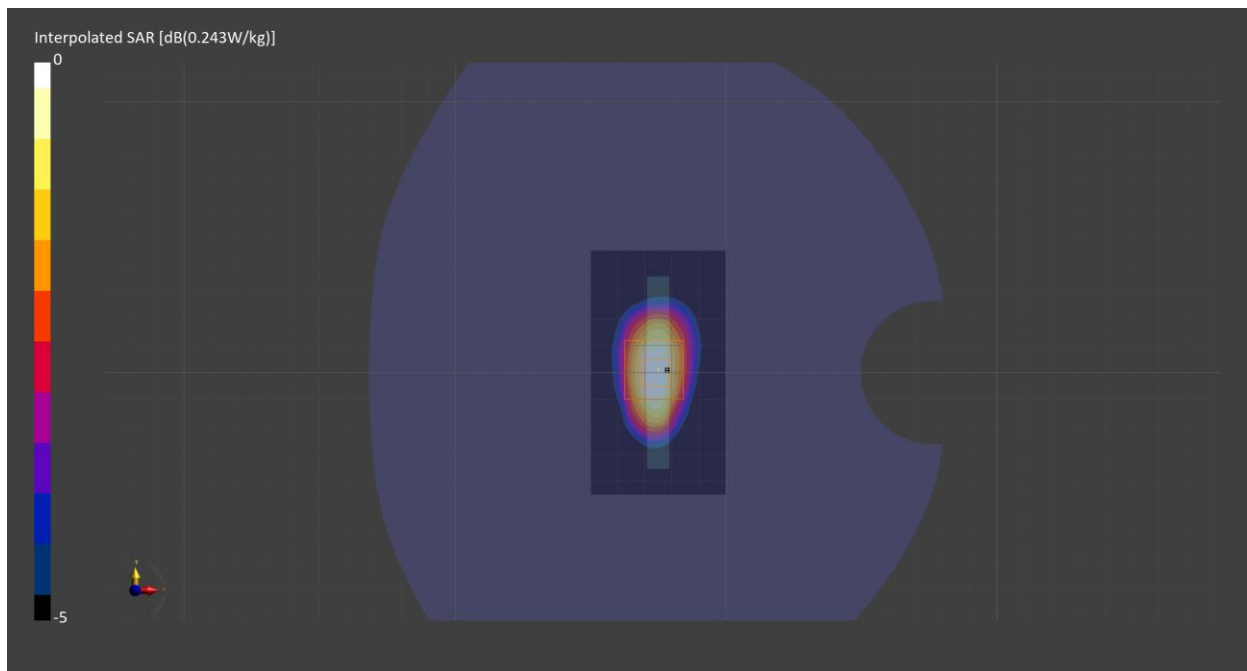
Probe Calibration Date	EX3DV4 - SN7709 2022-12-12	Phantom	Twin-SAM V8.0 (30deg probe tilt) - SN1742
DAE Calibration Date	DAE4 Sn1714 2022-11-23	TSL Meas. Date	HBBL1550-1950V3 2023-Feb-17

Scans Setup

	Area Scan	Zoom Scan
Grid Extents [mm]	49.8 x 90.0	30.0 x 30.0 x 30.0
Grid Steps [mm]	8.3 x 15.0	6.0 x 6.0 x 1.5
Sensor Surface [mm]	3.0	1.4
Graded Grid	n/a	Yes
M2/M1 [%]		82.4
Dist 3dB Peak [mm]		12.0

Measurement Results

	Area Scan	Zoom Scan
psSAR1g [W/Kg]	0.197	0.202
psSAR10g [W/Kg]	0.108	0.113
Power Drift [dB]	0.00	-0.02



Measurement Report for PCS 1900, EDGE BOTTOM, Normal, CELL Main2

Exposure Conditions

Band	PCS 1900	TSL Permittivity	38.9
Frequency [MHz] Channel Number	1909.8 810	TSL Conductivity [S/m]	1.42
Group UID	GSM 10024-DAC	Phantom Section TSL	Flat HSL
Conversion Factor	8.74	Test Distance [mm]	10.00
Communication Configuration	GPRS-FDD (TDMA, GMSK, TN 0-1)		

Hardware Setup

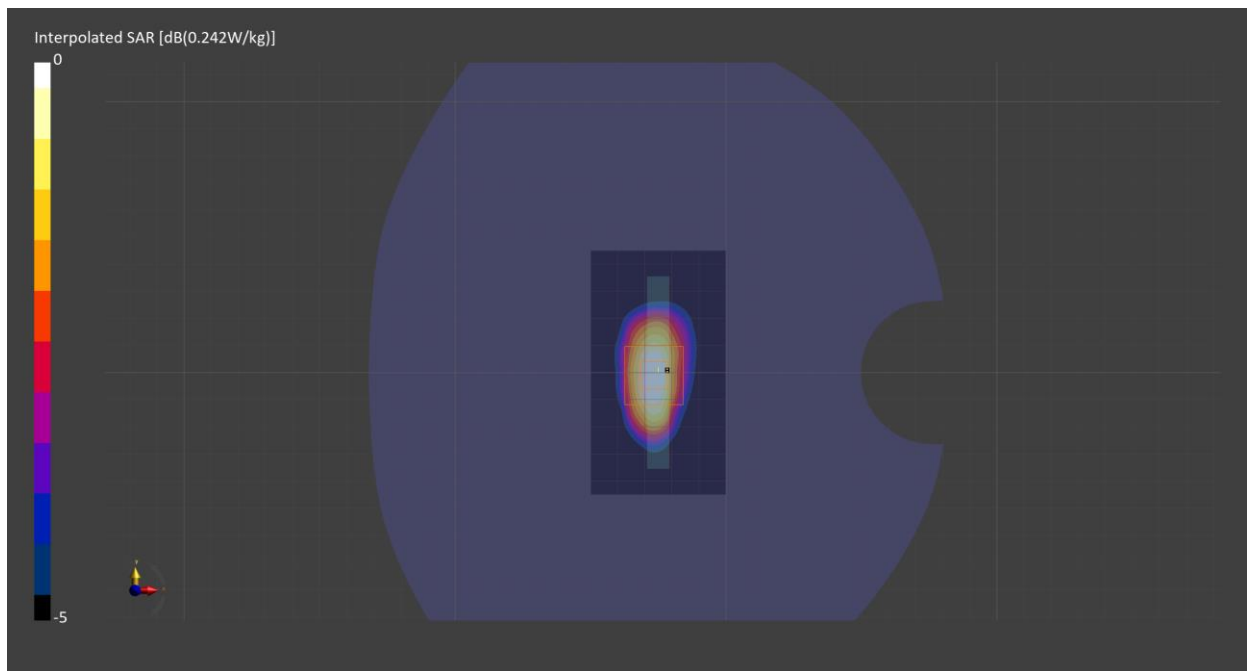
Probe Calibration Date	EX3DV4 - SN7709 2022-12-12	Phantom	Twin-SAM V8.0 (30deg probe tilt) - SN1742
DAE Calibration Date	DAE4 Sn1714 2022-11-23	TSL Meas. Date	HBBL1550-1950V3 2023-Feb-17

Scans Setup

	Area Scan	Zoom Scan
Grid Extents [mm]	49.8 x 90.0	30.0 x 30.0 x 30.0
Grid Steps [mm]	8.3 x 15.0	6.0 x 6.0 x 1.5
Sensor Surface [mm]	3.0	1.4
Graded Grid	n/a	Yes
M2/M1 [%]		82.8
Dist 3dB Peak [mm]		11.4

Measurement Results

	Area Scan	Zoom Scan
psSAR1g [W/Kg]	0.196	0.196
psSAR10g [W/Kg]	0.105	0.109
Power Drift [dB]	-0.04	-0.11



Measurement Report for Band 2, CHEEK, Normal, CELL Main2

Exposure Conditions

Band	Band 2	TSL Permittivity	39.0
Frequency [MHz] Channel Number	1880.0 9400	TSL Conductivity [S/m]	1.39
Group UID	WCDMA 10011-CAC	Phantom Section TSL	RightHead HSL
Conversion Factor	8.74	Test Distance [mm]	0.00
Communication Configuration	UMTS-FDD (WCDMA)		

Hardware Setup

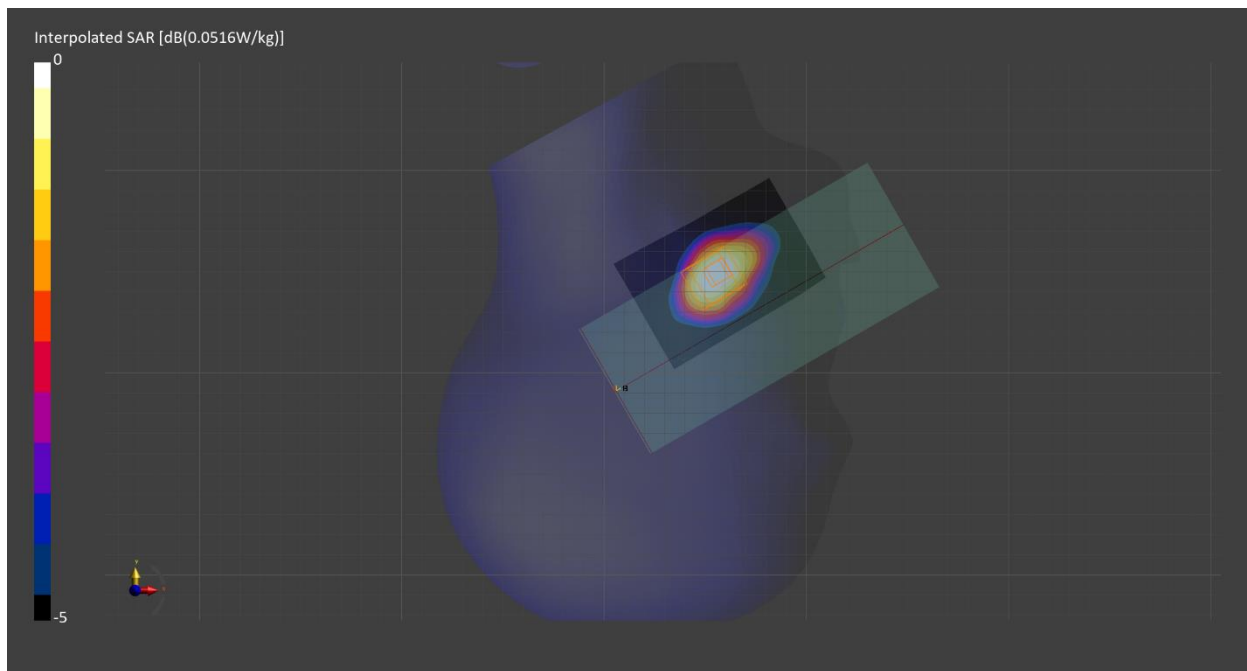
Probe Calibration Date	EX3DV4 - SN7709 2022-12-12	Phantom	Twin-SAM V8.0 (30deg probe tilt) - SN1742
DAE Calibration Date	DAE4 Sn1714 2022-11-23	TSL Meas. Date	HBBL1550-1950V3 2023-Feb-17

Scans Setup

	Area Scan	Zoom Scan
Grid Extents [mm]	60.0 x 90.0	30.0 x 30.0 x 30.0
Grid Steps [mm]	15.0 x 15.0	6.0 x 6.0 x 1.5
Sensor Surface [mm]	3.0	1.4
Graded Grid	n/a	Yes
M2/M1 [%]		88.7
Dist 3dB Peak [mm]		13.4

Measurement Results

	Area Scan	Zoom Scan
psSAR1g [W/Kg]	0.043	0.044
psSAR10g [W/Kg]	0.025	0.027
Power Drift [dB]	0.11	-0.02



Measurement Report for Band 2, FRONT, Normal, CELL Main2

Exposure Conditions

Band	Band 2	TSL Permittivity	39.0
Frequency [MHz] Channel Number	1880.0 9400	TSL Conductivity [S/m]	1.39
Group UID	WCDMA 10011-CAC	Phantom Section TSL	Flat HSL
Conversion Factor	8.74	Test Distance [mm]	10.00
Communication Configuration	UMTS-FDD (WCDMA)		

Hardware Setup

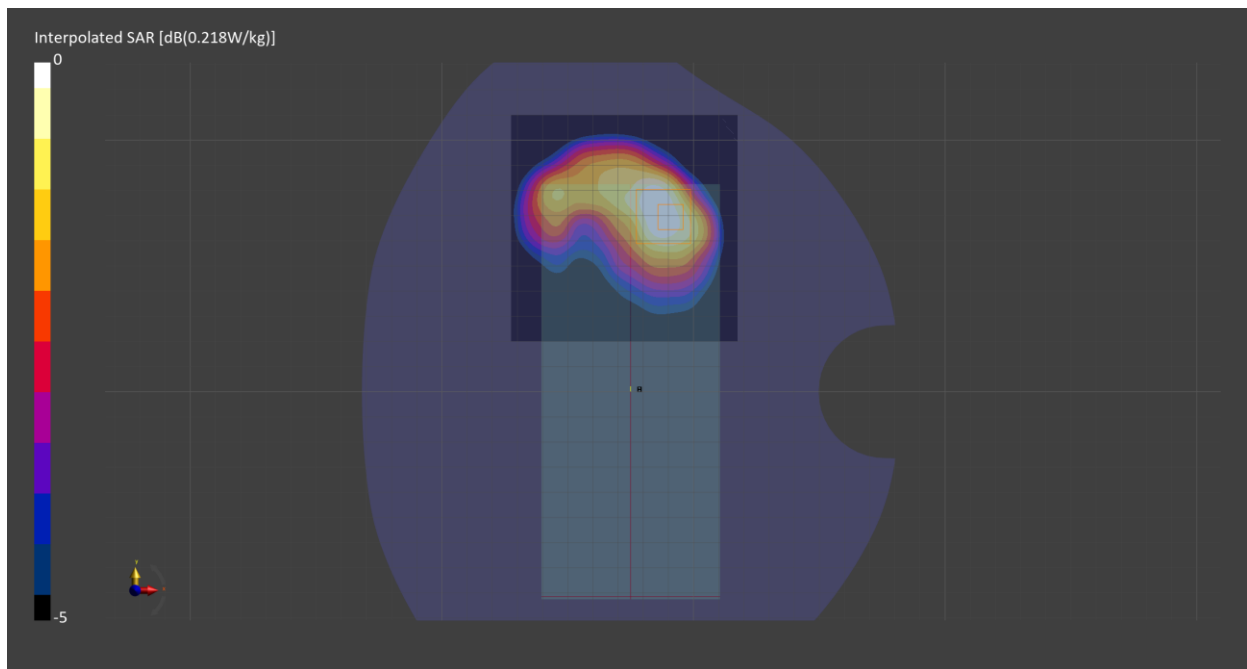
Probe Calibration Date	EX3DV4 - SN7709 2022-12-12	Phantom	Twin-SAM V8.0 (30deg probe tilt) - SN1742
DAE Calibration Date	DAE4 Sn1714 2022-11-23	TSL Meas. Date	HBBL1550-1950V3 2023-Feb-17

Scans Setup

	Area Scan	Zoom Scan
Grid Extents [mm]	90.0 x 90.0	30.0 x 30.0 x 30.0
Grid Steps [mm]	15.0 x 15.0	6.0 x 6.0 x 1.5
Sensor Surface [mm]	3.0	1.4
Graded Grid	n/a	Yes
M2/M1 [%]		83.0
Dist 3dB Peak [mm]		14.0

Measurement Results

	Area Scan	Zoom Scan
psSAR1g [W/Kg]	0.182	0.188
psSAR10g [W/Kg]	0.109	0.113
Power Drift [dB]	0.18	0.03



Measurement Report for Band 2, EDGE BOTTOM, Normal, CELL Main2

Exposure Conditions

Band	Band 2	TSL Permittivity	39.0
Frequency [MHz] Channel Number	1880.0 9400	TSL Conductivity [S/m]	1.39
Group UID	WCDMA 10011-CAC	Phantom Section TSL	Flat HSL
Conversion Factor	8.74	Test Distance [mm]	10.00
Communication Configuration	UMTS-FDD (WCDMA)		

Hardware Setup

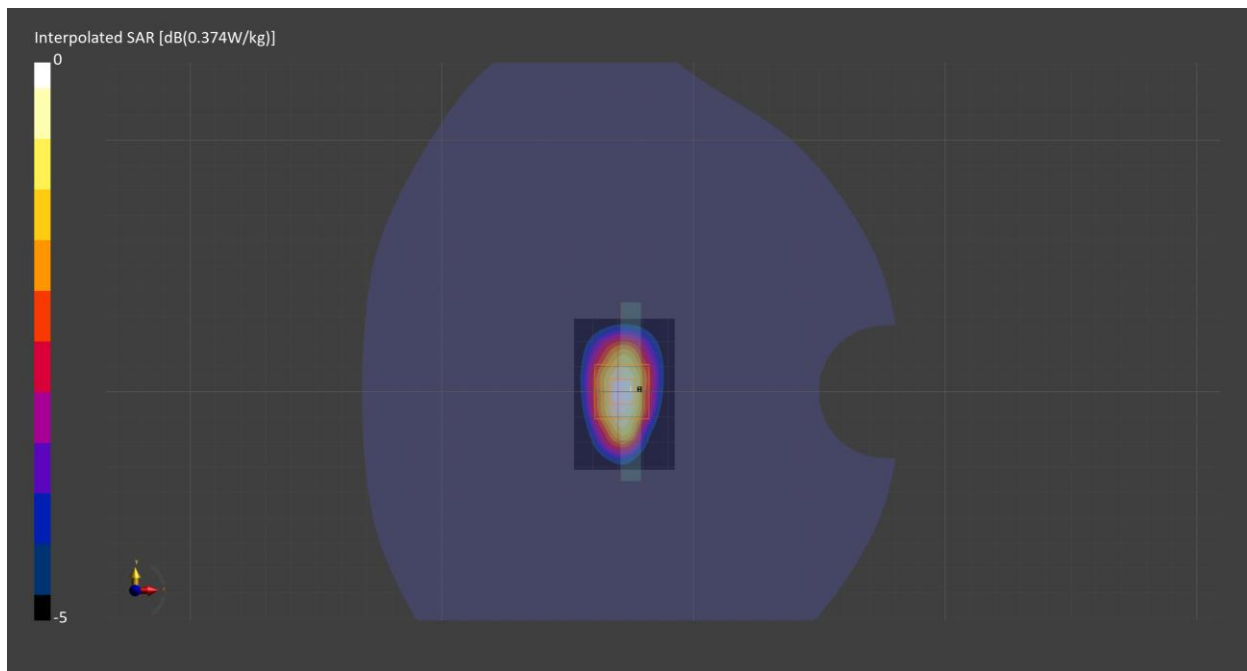
Probe Calibration Date	EX3DV4 - SN7709 2022-12-12	Phantom	Twin-SAM V8.0 (30deg probe tilt) - SN1742
DAE Calibration Date	DAE4 Sn1714 2022-11-23	TSL Meas. Date	HBBL1550-1950V3 2023-Feb-17

Scans Setup

	Area Scan	Zoom Scan
Grid Extents [mm]	40.0 x 60.0	30.0 x 30.0 x 30.0
Grid Steps [mm]	10.0 x 15.0	6.0 x 6.0 x 1.5
Sensor Surface [mm]	3.0	1.4
Graded Grid	n/a	Yes
M2/M1 [%]		83.4
Dist 3dB Peak [mm]		11.4

Measurement Results

	Area Scan	Zoom Scan
psSAR1g [W/Kg]	0.300	0.305
psSAR10g [W/Kg]	0.163	0.169
Power Drift [dB]	0.00	0.03



Measurement Report for Band 4, CHEEK, Normal, CELL Main2

Exposure Conditions

Band	Band 4	TSL Permittivity	39.4
Frequency [MHz] Channel Number	1732.6 1413	TSL Conductivity [S/m]	1.37
Group UID	WCDMA 10011-CAC	Phantom Section TSL	RightHead HSL
Conversion Factor	8.89	Test Distance [mm]	0.00
Communication Configuration	UMTS-FDD (WCDMA)		

Hardware Setup

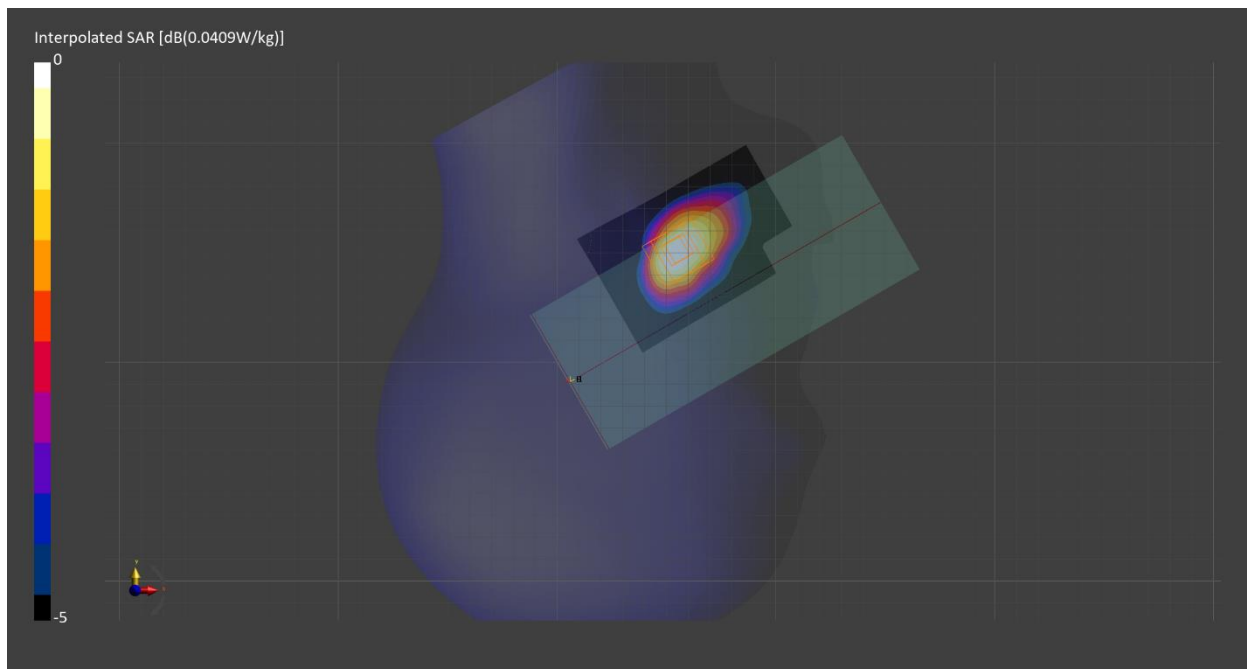
Probe Calibration Date	EX3DV4 - SN7711 2022-03-11	Phantom	Twin-SAM V8.0 (30deg probe tilt) - SN2084
DAE Calibration Date	DAE4 Sn1716 2022-03-08	TSL Meas. Date	HBBL600-10000V6 2023-Feb-20

Scans Setup

	Area Scan	Zoom Scan
Grid Extents [mm]	60.0 x 90.0	30.0 x 30.0 x 30.0
Grid Steps [mm]	15.0 x 15.0	6.0 x 6.0 x 1.5
Sensor Surface [mm]	3.0	1.4
Graded Grid	n/a	Yes
M2/M1 [%]		89.5
Dist 3dB Peak [mm]		9.7

Measurement Results

	Area Scan	Zoom Scan
psSAR1g [W/Kg]	0.026	0.027
psSAR10g [W/Kg]	0.015	0.017
Power Drift [dB]	0.12	-0.06



Measurement Report for Band 4, BACK, Normal, CELL Main2

Exposure Conditions

Band	Band 4	TSL Permittivity	39.4
Frequency [MHz] Channel Number	1732.6 1413	TSL Conductivity [S/m]	1.37
Group UID	WCDMA 10011-CAC	Phantom Section TSL	Flat HSL
Conversion Factor	8.89	Test Distance [mm]	10.00
Communication Configuration	UMTS-FDD (WCDMA)		

Hardware Setup

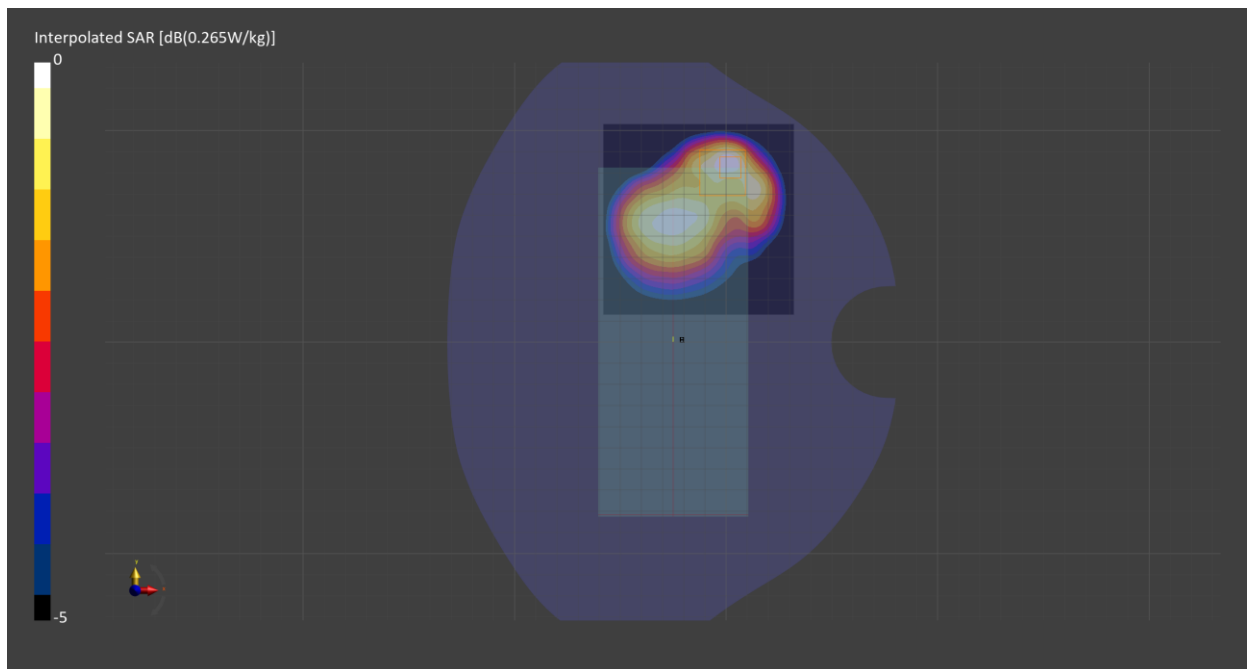
Probe Calibration Date	EX3DV4 - SN7711 2022-03-11	Phantom	Twin-SAM V8.0 (30deg probe tilt) - SN2084
DAE Calibration Date	DAE4 Sn1716 2022-03-08	TSL Meas. Date	HBBL600-10000V6 2023-Feb-20

Scans Setup

	Area Scan	Zoom Scan
Grid Extents [mm]	90.0 x 90.0	30.0 x 30.0 x 30.0
Grid Steps [mm]	15.0 x 15.0	6.0 x 6.0 x 1.5
Sensor Surface [mm]	3.0	1.4
Graded Grid	n/a	Yes
M2/M1 [%]		80.8
Dist 3dB Peak [mm]		10.8

Measurement Results

	Area Scan	Zoom Scan
psSAR1g [W/Kg]	0.138	0.146
psSAR10g [W/Kg]	0.086	0.084
Power Drift [dB]	-0.00	-0.00



Measurement Report for Band 5, CHEEK, Normal, CELL Main1

Exposure Conditions

Band	Band 5	TSL Permittivity	43.2
Frequency [MHz] Channel Number	836.6 4183	TSL Conductivity [S/m]	0.937
Group UID	WCDMA 10011-CAC	Phantom Section TSL	RightHead HSL
Conversion Factor	10.14	Test Distance [mm]	0.00
Communication Configuration	UMTS-FDD (WCDMA)		

Hardware Setup

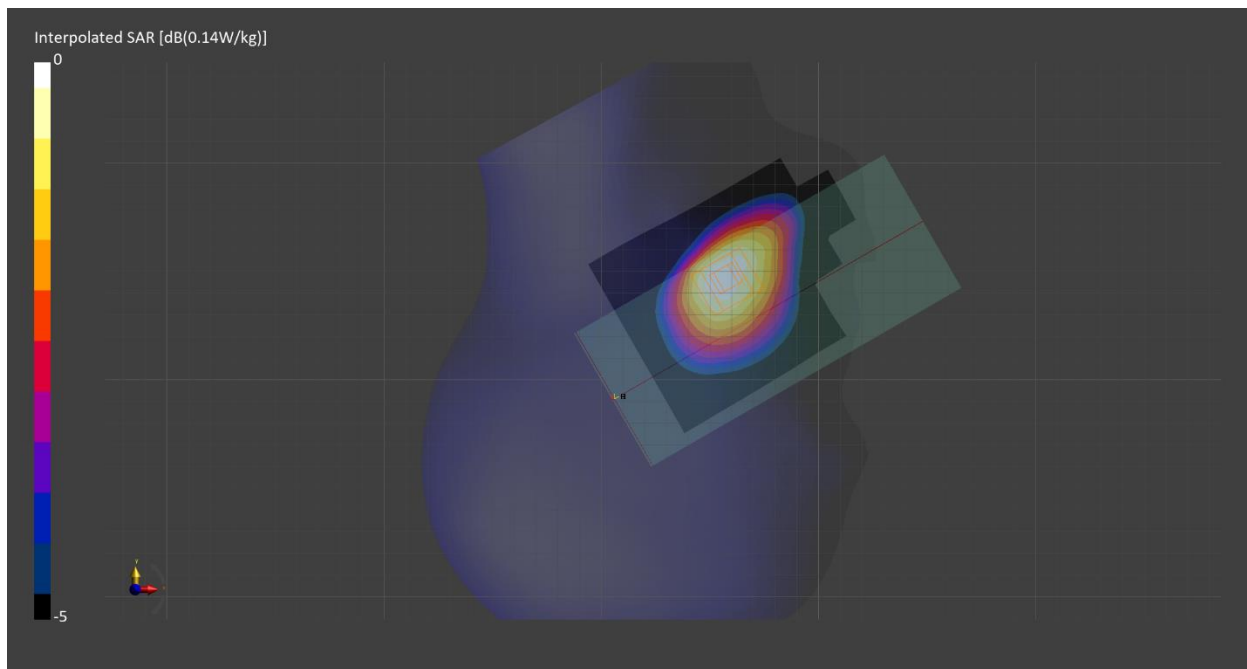
Probe Calibration Date	EX3DV4 - SN7710 2023-02-03	Phantom	Twin-SAM V8.0 (30deg probe tilt) - SN2082
DAE Calibration Date	DAE4 Sn1715 2023-01-23	TSL Meas. Date	HBBL600-10000V6 2023-Feb-20

Scans Setup

	Area Scan	Zoom Scan
Grid Extents [mm]	90.0 x 120.0	30.0 x 30.0 x 30.0
Grid Steps [mm]	15.0 x 15.0	6.0 x 6.0 x 1.5
Sensor Surface [mm]	3.0	1.4
Graded Grid	n/a	Yes
M2/M1 [%]		93.1
Dist 3dB Peak [mm]		21.8

Measurement Results

	Area Scan	Zoom Scan
psSAR1g [W/Kg]	0.120	0.125
psSAR10g [W/Kg]	0.081	0.094
Power Drift [dB]	-0.02	-0.02



Measurement Report for Band 5, BACK, Normal, CELL Main1

Exposure Conditions

Band	Band 5	TSL Permittivity	43.2
Frequency [MHz] Channel Number	836.6 4183	TSL Conductivity [S/m]	0.937
Group UID	WCDMA 10011-CAC	Phantom Section TSL	Flat HSL
Conversion Factor	10.14	Test Distance [mm]	10.00
Communication Configuration	UMTS-FDD (WCDMA)		

Hardware Setup

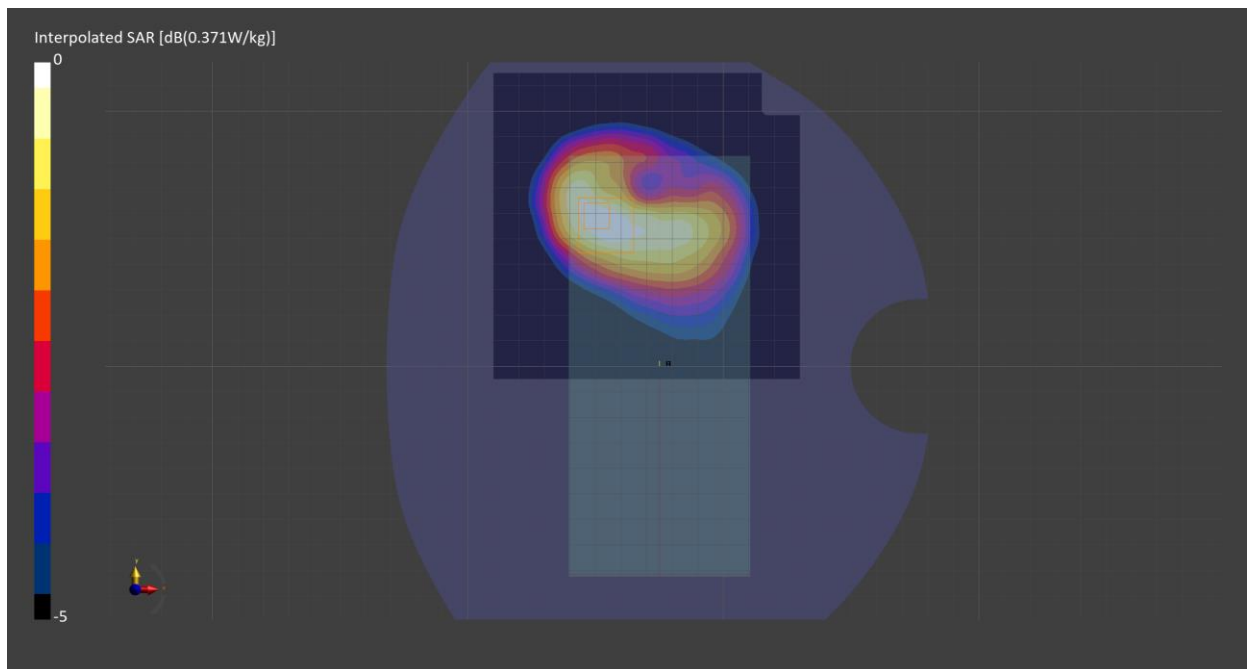
Probe Calibration Date	EX3DV4 - SN7710 2023-02-03	Phantom	Twin-SAM V8.0 (30deg probe tilt) - SN2082
DAE Calibration Date	DAE4 Sn1715 2023-01-23	TSL Meas. Date	HBBL600-10000V6 2023-Feb-20

Scans Setup

	Area Scan	Zoom Scan
Grid Extents [mm]	120.0 x 120.0	30.0 x 30.0 x 30.0
Grid Steps [mm]	15.0 x 15.0	6.0 x 6.0 x 1.5
Sensor Surface [mm]	3.0	1.4
Graded Grid	n/a	Yes
M2/M1 [%]		83.3
Dist 3dB Peak [mm]		17.0

Measurement Results

	Area Scan	Zoom Scan
psSAR1g [W/Kg]	0.321	0.323
psSAR10g [W/Kg]	0.212	0.205
Power Drift [dB]	0.01	0.01



Measurement Report for Band 4, CHEEK, Normal, CELL Main2

Exposure Conditions

Band	Band 4	TSL Permittivity	39.4
Frequency [MHz] Channel Number	1732.5 20175	TSL Conductivity [S/m]	1.37
Group UID	LTE-FDD 10169-CAF	Phantom Section TSL	RightHead HSL
Conversion Factor	8.89	Test Distance [mm]	0.00
Communication Configuration	LTE-FDD (SC-FDMA, 1 RB, 20 MHz, QPSK) RBPosition:Low AntennaCfg:SISO		

Hardware Setup

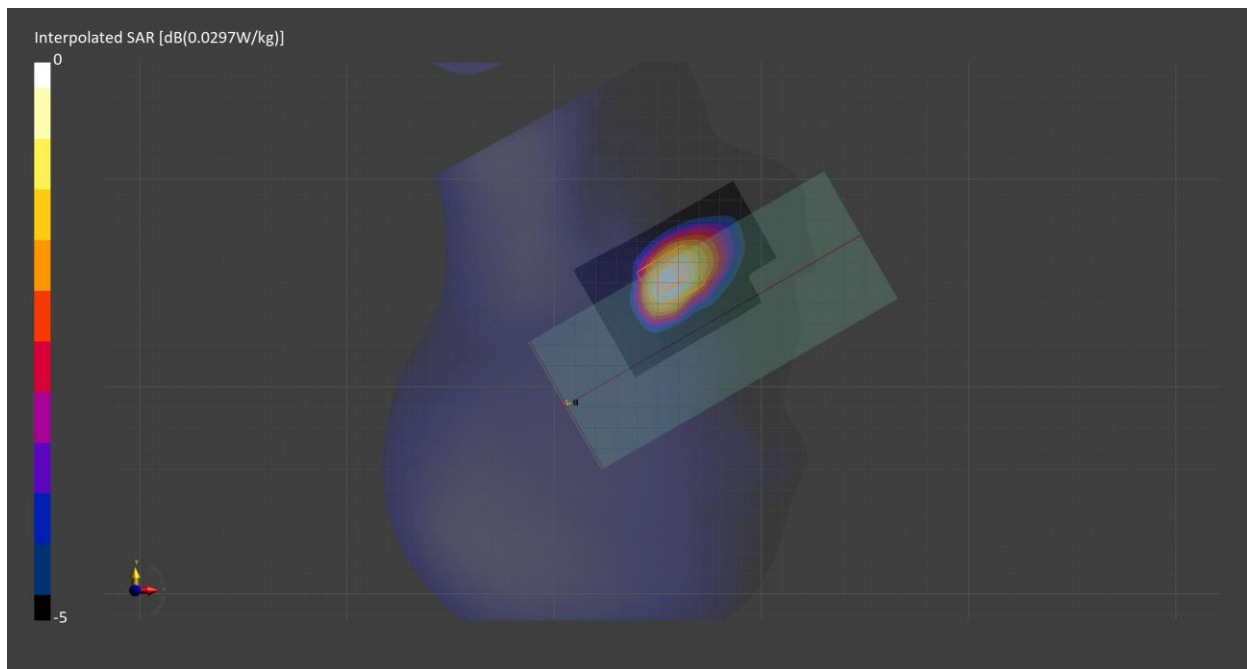
Probe Calibration Date	EX3DV4 - SN7711 2022-03-11	Phantom	Twin-SAM V8.0 (30deg probe tilt) - SN2084
DAE Calibration Date	DAE4 Sn1716 2022-03-08	TSL Meas. Date	HBBL600-10000V6 2023-Feb-20

Scans Setup

	Area Scan	Zoom Scan
Grid Extents [mm]	60.0 x 90.0	30.0 x 30.0 x 30.0
Grid Steps [mm]	15.0 x 15.0	6.0 x 6.0 x 1.5
Sensor Surface [mm]	3.0	1.4
Graded Grid	n/a	Yes
M2/M1 [%]		89.9
Dist 3dB Peak [mm]		9.2

Measurement Results

	Area Scan	Zoom Scan
psSAR1g [W/Kg]	0.024	0.025
psSAR10g [W/Kg]	0.014	0.016
Power Drift [dB]	0.02	0.12



Measurement Report for Band 4, BACK, Normal, CELL Main2

Exposure Conditions

Band	Band 4	TSL Permittivity	39.4
Frequency [MHz] Channel Number	1732.5 20175	TSL Conductivity [S/m]	1.37
Group UID	LTE-FDD 10169-CAF	Phantom Section TSL	Flat HSL
Conversion Factor	8.89	Test Distance [mm]	10.00
Communication Configuration	LTE-FDD (SC-FDMA, 1 RB, 20 MHz, QPSK) RBPosition:Low AntennaCfg:SISO		

Hardware Setup

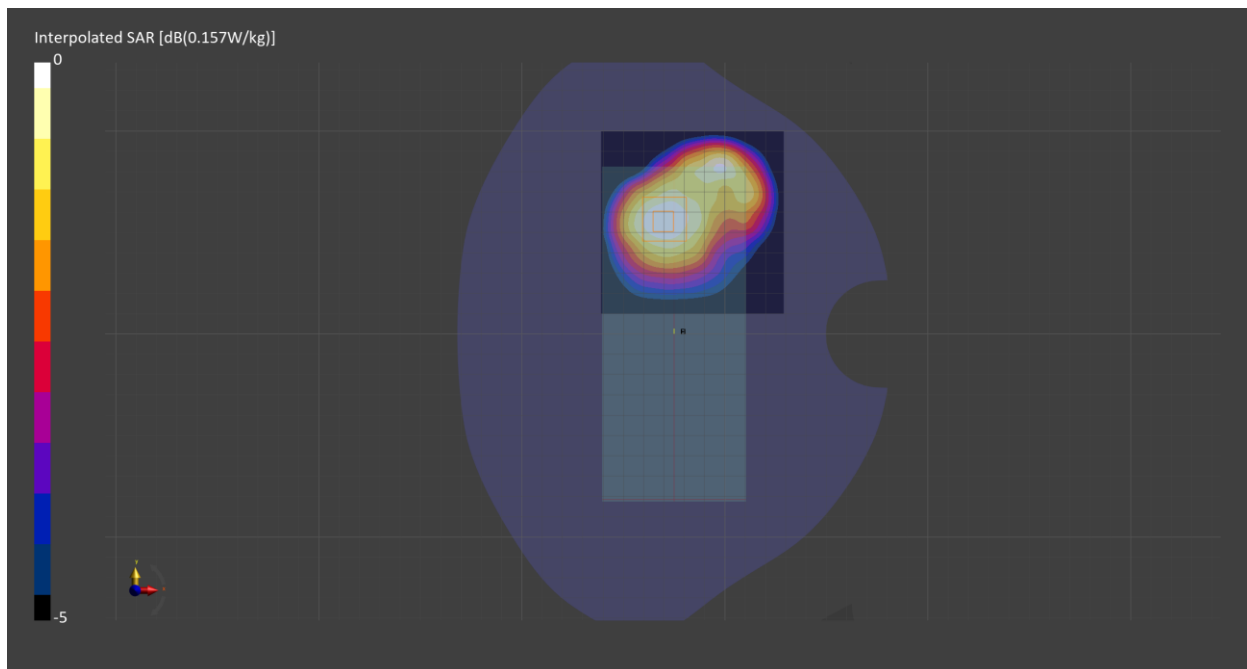
Probe Calibration Date	EX3DV4 - SN7711 2022-03-11	Phantom	Twin-SAM V8.0 (30deg probe tilt) - SN2084
DAE Calibration Date	DAE4 Sn1716 2022-03-08	TSL Meas. Date	HBBL600-10000V6 2023-Feb-20

Scans Setup

	Area Scan	Zoom Scan
Grid Extents [mm]	90.0 x 90.0	30.0 x 30.0 x 30.0
Grid Steps [mm]	15.0 x 15.0	6.0 x 6.0 x 1.5
Sensor Surface [mm]	3.0	1.4
Graded Grid	n/a	Yes
M2/M1 [%]		84.8
Dist 3dB Peak [mm]		26.4

Measurement Results

	Area Scan	Zoom Scan
psSAR1g [W/Kg]	0.097	0.10
psSAR10g [W/Kg]	0.061	0.065
Power Drift [dB]	-0.03	-0.04



Measurement Report for Band 4, EDGE BOTTOM, Normal, CELL Main2

Exposure Conditions

Band	Band 4	TSL Permittivity	39.4
Frequency [MHz] Channel Number	1732.5 20175	TSL Conductivity [S/m]	1.37
Group UID	LTE-FDD 10169-CAF	Phantom Section TSL	Flat HSL
Conversion Factor	8.89	Test Distance [mm]	10.00
Communication Configuration	LTE-FDD (SC-FDMA, 1 RB, 20 MHz, QPSK) RBPosition:Low AntennaCfg:SISO		

Hardware Setup

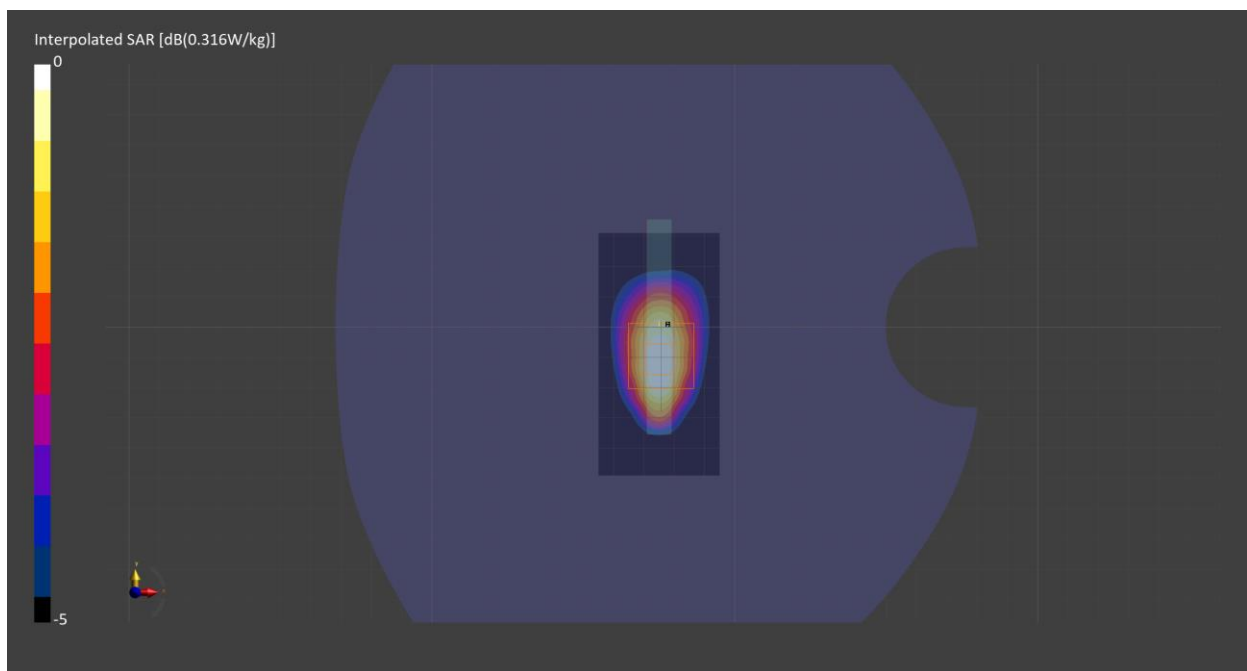
Probe Calibration Date	EX3DV4 - SN7711 2022-03-11	Phantom	Twin-SAM V8.0 (30deg probe tilt) - SN2084
DAE Calibration Date	DAE4 Sn1716 2022-03-08	TSL Meas. Date	HBBL600-10000V6 2023-Feb-20

Scans Setup

	Area Scan	Zoom Scan
Grid Extents [mm]	40.0 x 80.0	30.0 x 30.0 x 30.0
Grid Steps [mm]	10.0 x 10.0	6.0 x 6.0 x 1.5
Sensor Surface [mm]	3.0	1.4
Graded Grid	n/a	Yes
M2/M1 [%]		83.2
Dist 3dB Peak [mm]		10.8

Measurement Results

	Area Scan	Zoom Scan
psSAR1g [W/Kg]	0.173	0.176
psSAR10g [W/Kg]	0.095	0.097
Power Drift [dB]	0.03	0.02



Measurement Report for Band 5, CHEEK, Normal, CELL Main1

Exposure Conditions

Band	Band 5	TSL Permittivity	43.2
Frequency [MHz] Channel Number	836.5 20525	TSL Conductivity [S/m]	0.937
Group UID	LTE-FDD 10175-CAH	Phantom Section TSL	RightHead HSL
Conversion Factor	10.14	Test Distance [mm]	0.00
Communication Configuration	LTE-FDD (SC-FDMA, 1 RB, 10 MHz, QPSK) RBPosition:Low AntennaCfg:SISO		

Hardware Setup

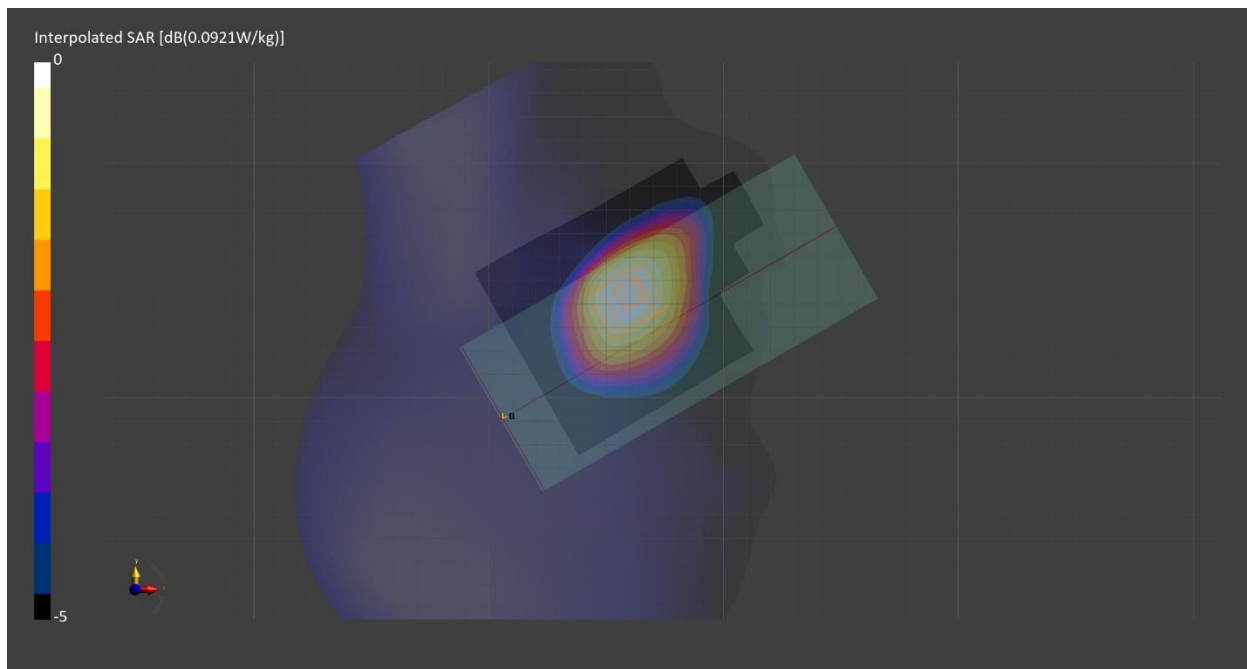
Probe Calibration Date	EX3DV4 - SN7710 2023-02-03	Phantom	Twin-SAM V8.0 (30deg probe tilt) - SN2082
DAE Calibration Date	DAE4 Sn1715 2023-01-23	TSL Meas. Date	HBBL600-10000V6 2023-Feb-20

Scans Setup

	Area Scan	Zoom Scan
Grid Extents [mm]	90.0 x 120.0	30.0 x 30.0 x 30.0
Grid Steps [mm]	15.0 x 15.0	6.0 x 6.0 x 1.5
Sensor Surface [mm]	3.0	1.4
Graded Grid	n/a	Yes
M2/M1 [%]		91.5
Dist 3dB Peak [mm]		20.1

Measurement Results

	Area Scan	Zoom Scan
psSAR1g [W/Kg]	0.080	0.084
psSAR10g [W/Kg]	0.055	0.065
Power Drift [dB]	-0.06	-0.04



Measurement Report for Band 5, BACK, Normal, CELL Main1

Exposure Conditions

Band	Band 5	TSL Permittivity	43.2
Frequency [MHz] Channel Number	836.5 20525	TSL Conductivity [S/m]	0.937
Group UID	LTE-FDD 10175-CAH	Phantom Section TSL	Flat HSL
Conversion Factor	10.14	Test Distance [mm]	10.00
Communication Configuration	LTE-FDD (SC-FDMA, 1 RB, 10 MHz, QPSK) RBPosition:Low AntennaCfg:SISO		

Hardware Setup

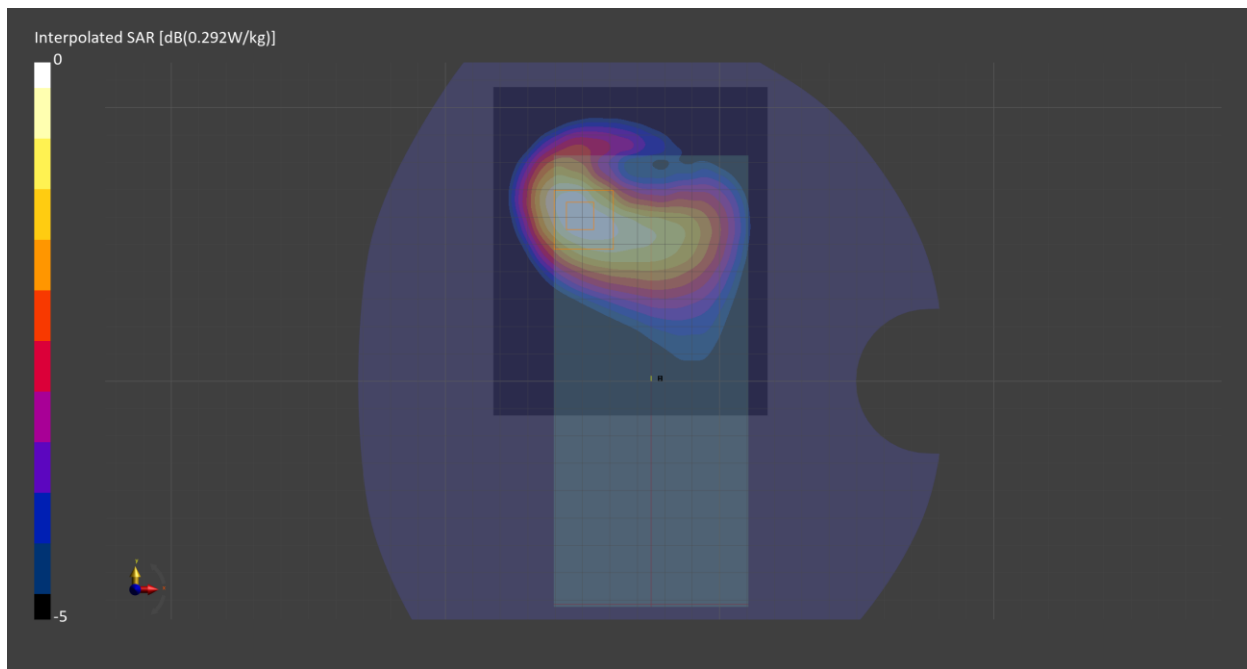
Probe Calibration Date	EX3DV4 - SN7710 2023-02-03	Phantom	Twin-SAM V8.0 (30deg probe tilt) - SN2082
DAE Calibration Date	DAE4 Sn1715 2023-01-23	TSL Meas. Date	HBBL600-10000V6 2023-Feb-20

Scans Setup

	Area Scan	Zoom Scan
Grid Extents [mm]	100.0 x 120.0	30.0 x 30.0 x 30.0
Grid Steps [mm]	10.0 x 10.0	6.0 x 6.0 x 1.5
Sensor Surface [mm]	3.0	1.4
Graded Grid	n/a	Yes
M2/M1 [%]		83.6
Dist 3dB Peak [mm]		17.0

Measurement Results

	Area Scan	Zoom Scan
psSAR1g [W/Kg]	0.253	0.254
psSAR10g [W/Kg]	0.168	0.161
Power Drift [dB]	-0.01	-0.02



Measurement Report for Band 12, CHEEK, Normal, CELL Main1

Exposure Conditions

Band	Band 12	TSL Permittivity	43.6
Frequency [MHz] Channel Number	707.5 23095	TSL Conductivity [S/m]	0.849
Group UID	LTE-FDD 10175-CAH	Phantom Section TSL	RightHead HSL
Conversion Factor	10.65	Test Distance [mm]	0.00
Communication Configuration	LTE-FDD (SC-FDMA, 1 RB, 10 MHz, QPSK) RBPosition:Low AntennaCfg:SISO		

Hardware Setup

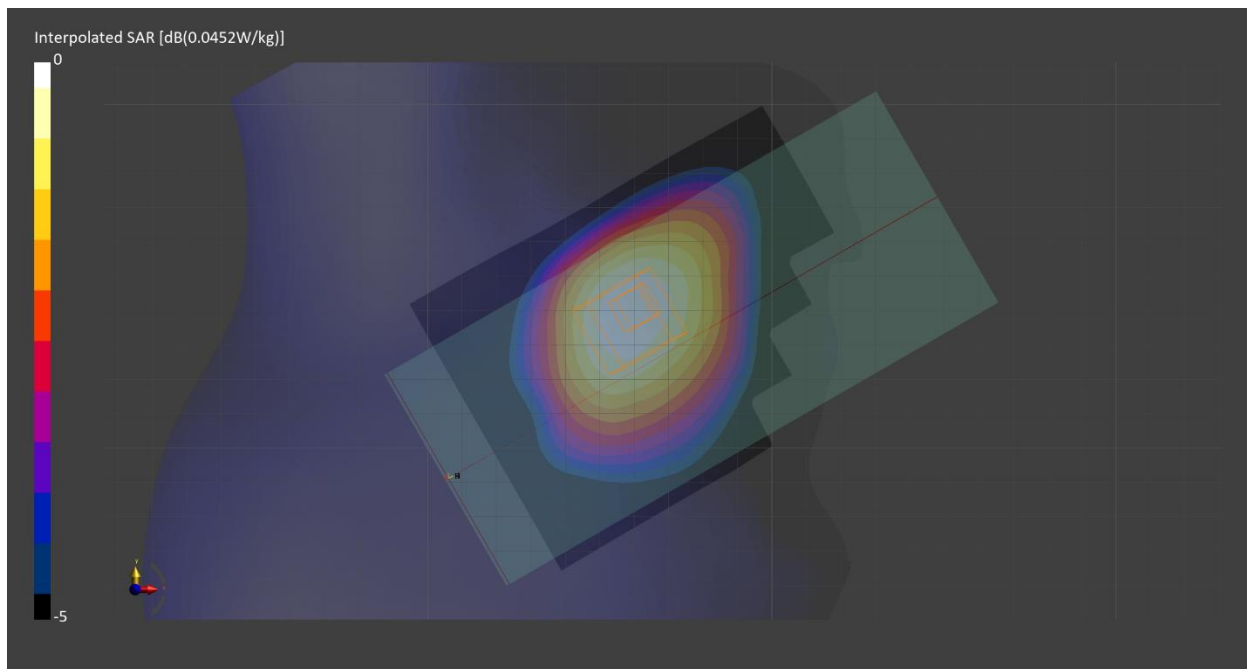
Probe Calibration Date	EX3DV4 - SN7710 2023-02-03	Phantom	Twin-SAM V8.0 (30deg probe tilt) - SN2082
DAE Calibration Date	DAE4 Sn1715 2023-01-23	TSL Meas. Date	HBBL600-10000V6 2023-Feb-24

Scans Setup

	Area Scan	Zoom Scan
Grid Extents [mm]	90.0 x 120.0	30.0 x 30.0 x 30.0
Grid Steps [mm]	15.0 x 15.0	6.0 x 6.0 x 1.5
Sensor Surface [mm]	3.0	1.4
Graded Grid	n/a	Yes
M2/M1 [%]		94.2
Dist 3dB Peak [mm]		28.0

Measurement Results

	Area Scan	Zoom Scan
psSAR1g [W/Kg]	0.040	0.041
psSAR10g [W/Kg]	0.028	0.032
Power Drift [dB]	-0.04	0.03



Measurement Report for Band 12, BACK, Normal, CELL Main1

Exposure Conditions

Band	Band 12	TSL Permittivity	43.6
Frequency [MHz] Channel Number	707.5 23095	TSL Conductivity [S/m]	0.849
Group UID	LTE-FDD 10175-CAH	Phantom Section TSL	Flat HSL
Conversion Factor	10.65	Test Distance [mm]	10.00
Communication Configuration	LTE-FDD (SC-FDMA, 1 RB, 10 MHz, QPSK) RBPosition:Low AntennaCfg:SISO		

Hardware Setup

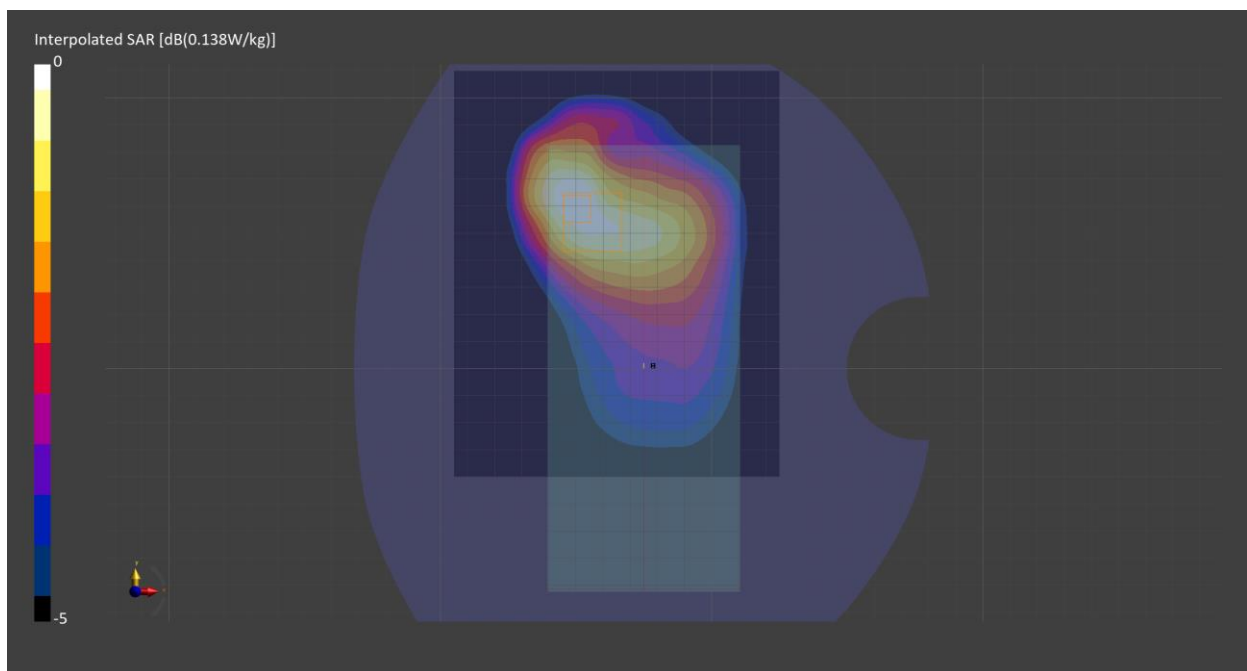
Probe Calibration Date	EX3DV4 - SN7710 2023-02-03	Phantom	Twin-SAM V8.0 (30deg probe tilt) - SN2082
DAE Calibration Date	DAE4 Sn1715 2023-01-23	TSL Meas. Date	HBBL600-10000V6 2023-Feb-24

Scans Setup

	Area Scan	Zoom Scan
Grid Extents [mm]	120.0 x 150.0	30.0 x 30.0 x 30.0
Grid Steps [mm]	15.0 x 15.0	6.0 x 6.0 x 1.5
Sensor Surface [mm]	3.0	1.4
Graded Grid	n/a	Yes
M2/M1 [%]		81.3
Dist 3dB Peak [mm]		16.4

Measurement Results

	Area Scan	Zoom Scan
psSAR1g [W/Kg]	0.121	0.122
psSAR10g [W/Kg]	0.082	0.079
Power Drift [dB]	-0.01	0.02



Measurement Report for Band 13, CHEEK, Normal, CELL Main1

Exposure Conditions

Band	Band 13	TSL Permittivity	43.4
Frequency [MHz] Channel Number	782.0 23230	TSL Conductivity [S/m]	0.875
Group UID	LTE-FDD 10175-CAH	Phantom Section TSL	RightHead HSL
Conversion Factor	10.65	Test Distance [mm]	0.00
Communication Configuration	LTE-FDD (SC-FDMA, 1 RB, 10 MHz, QPSK) RBPosition:Low AntennaCfg:SISO		

Hardware Setup

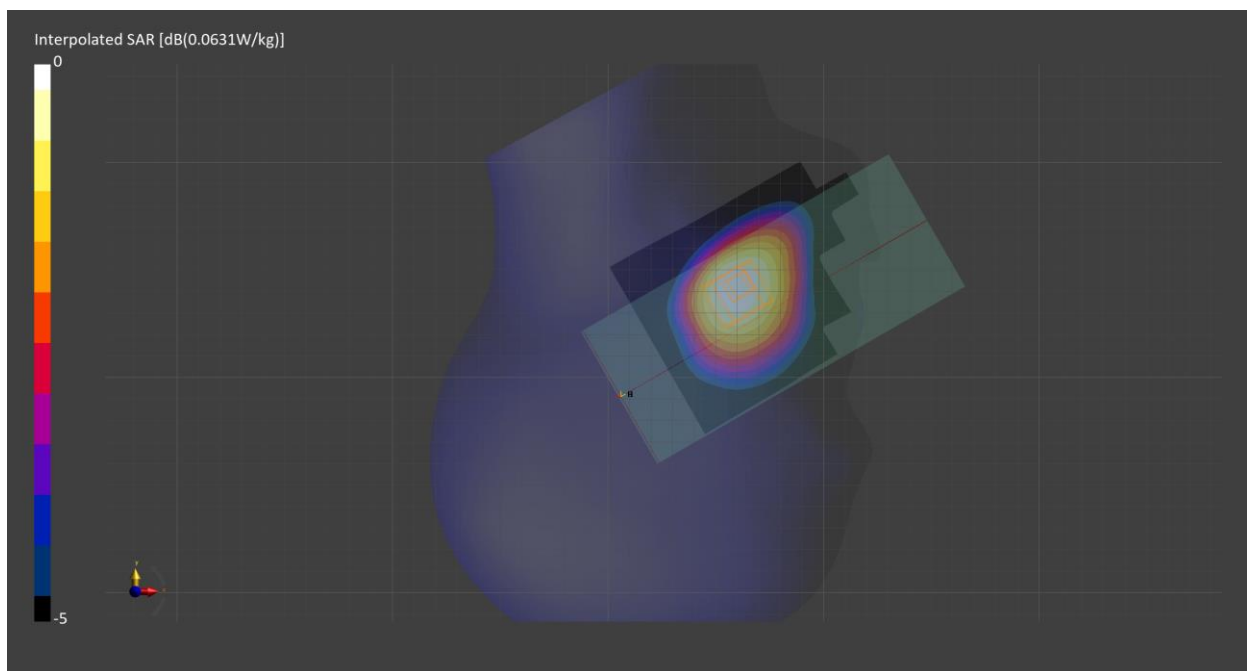
Probe Calibration Date	EX3DV4 - SN7710 2023-02-03	Phantom	Twin-SAM V8.0 (30deg probe tilt) - SN2082
DAE Calibration Date	DAE4 Sn1715 2023-01-23	TSL Meas. Date	HBBL600-10000V6 2023-Feb-24

Scans Setup

	Area Scan	Zoom Scan
Grid Extents [mm]	90.0 x 120.0	30.0 x 30.0 x 30.0
Grid Steps [mm]	15.0 x 15.0	6.0 x 6.0 x 1.5
Sensor Surface [mm]	3.0	1.4
Graded Grid	n/a	Yes
M2/M1 [%]		93.0
Dist 3dB Peak [mm]		23.0

Measurement Results

	Area Scan	Zoom Scan
psSAR1g [W/Kg]	0.055	0.057
psSAR10g [W/Kg]	0.038	0.044
Power Drift [dB]	-0.02	0.00



Measurement Report for Band 13, BACK, Normal, CELL Main1

Exposure Conditions

Band	Band 13	TSL Permittivity	43.4
Frequency [MHz] Channel Number	782.0 23230	TSL Conductivity [S/m]	0.875
Group UID	LTE-FDD 10175-CAH	Phantom Section TSL	Flat HSL
Conversion Factor	10.65	Test Distance [mm]	10.00
Communication Configuration	LTE-FDD (SC-FDMA, 1 RB, 10 MHz, QPSK) RBPosition:Low AntennaCfg:SISO		

Hardware Setup

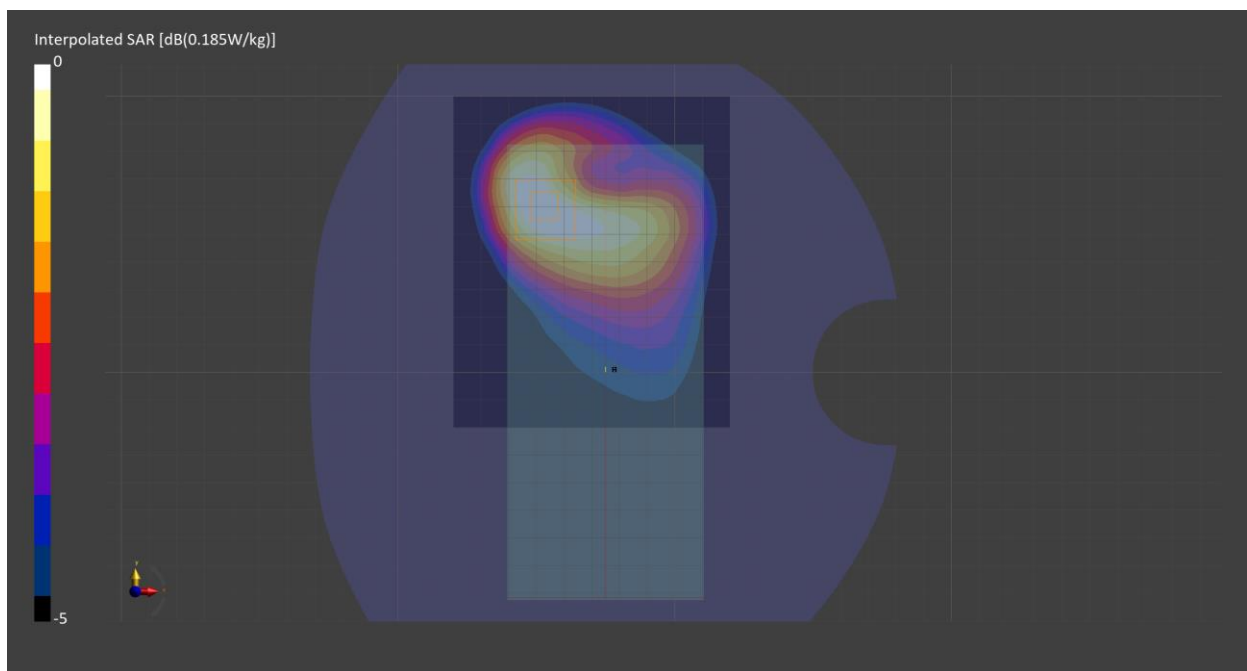
Probe Calibration Date	EX3DV4 - SN7710 2023-02-03	Phantom	Twin-SAM V8.0 (30deg probe tilt) - SN2082
DAE Calibration Date	DAE4 Sn1715 2023-01-23	TSL Meas. Date	HBBL600-10000V6 2023-Feb-24

Scans Setup

	Area Scan	Zoom Scan
Grid Extents [mm]	100.0 x 120.0	30.0 x 30.0 x 30.0
Grid Steps [mm]	10.0 x 15.0	6.0 x 6.0 x 1.5
Sensor Surface [mm]	3.0	1.4
Graded Grid	n/a	Yes
M2/M1 [%]		84.2
Dist 3dB Peak [mm]		18.0

Measurement Results

	Area Scan	Zoom Scan
psSAR1g [W/Kg]	0.161	0.165
psSAR10g [W/Kg]	0.109	0.106
Power Drift [dB]	-0.02	0.00



Measurement Report for Band 41, CHEEK, Normal, CELL Main2

Exposure Conditions

Band	Band 41	TSL Permittivity	40.9
Frequency [MHz] Channel Number	2593.0 40620	TSL Conductivity [S/m]	1.93
Group UID	LTE-TDD 10435-AAG	Phantom Section TSL	RightHead HSL
Conversion Factor	8.2	Test Distance [mm]	0.00
Communication Configuration	LTE-TDD (SC-FDMA, 1 RB, 20 MHz, QPSK, UL Subframe=2,3,4,7,8,9) RBPosition:High AntennaCfg:SISO		

Hardware Setup

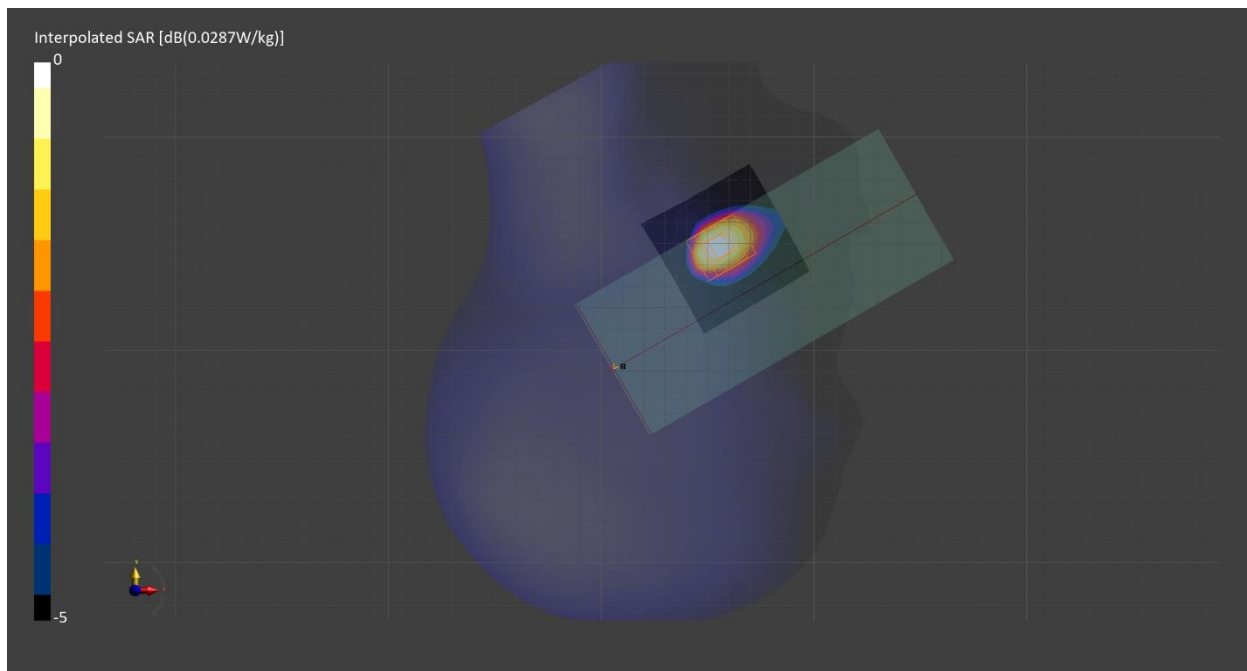
Probe Calibration Date	EX3DV4 - SN7709 2022-12-12	Phantom	Twin-SAM V8.0 (30deg probe tilt) - SN1742
DAE Calibration Date	DAE4 Sn1714 2022-11-23	TSL Meas. Date	HBBL-600-10000 2023-Feb-24

Scans Setup

	Area Scan	Zoom Scan
Grid Extents [mm]	60.0 x 60.0	30.0 x 30.0 x 30.0
Grid Steps [mm]	10.0 x 10.0	5.0 x 5.0 x 1.5
Sensor Surface [mm]	3.0	1.4
Graded Grid	n/a	Yes
M2/M1 [%]		88.0
Dist 3dB Peak [mm]		10.9

Measurement Results

	Area Scan	Zoom Scan
psSAR1g [W/Kg]	0.022	0.022
psSAR10g [W/Kg]	0.011	0.011
Power Drift [dB]	0.01	0.10



Measurement Report for Band 41, FRONT, Normal, CELL Main2

Exposure Conditions

Band	Band 41	TSL Permittivity	40.9
Frequency [MHz] Channel Number	2593.0 40620	TSL Conductivity [S/m]	1.93
Group UID	LTE-TDD 10435-AAG	Phantom Section TSL	Flat HSL
Conversion Factor	8.2	Test Distance [mm]	10.00
Communication Configuration	LTE-TDD (SC-FDMA, 1 RB, 20 MHz, QPSK, UL Subframe=2,3,4,7,8,9) RBPosition:High AntennaCfg:SISO		

Hardware Setup

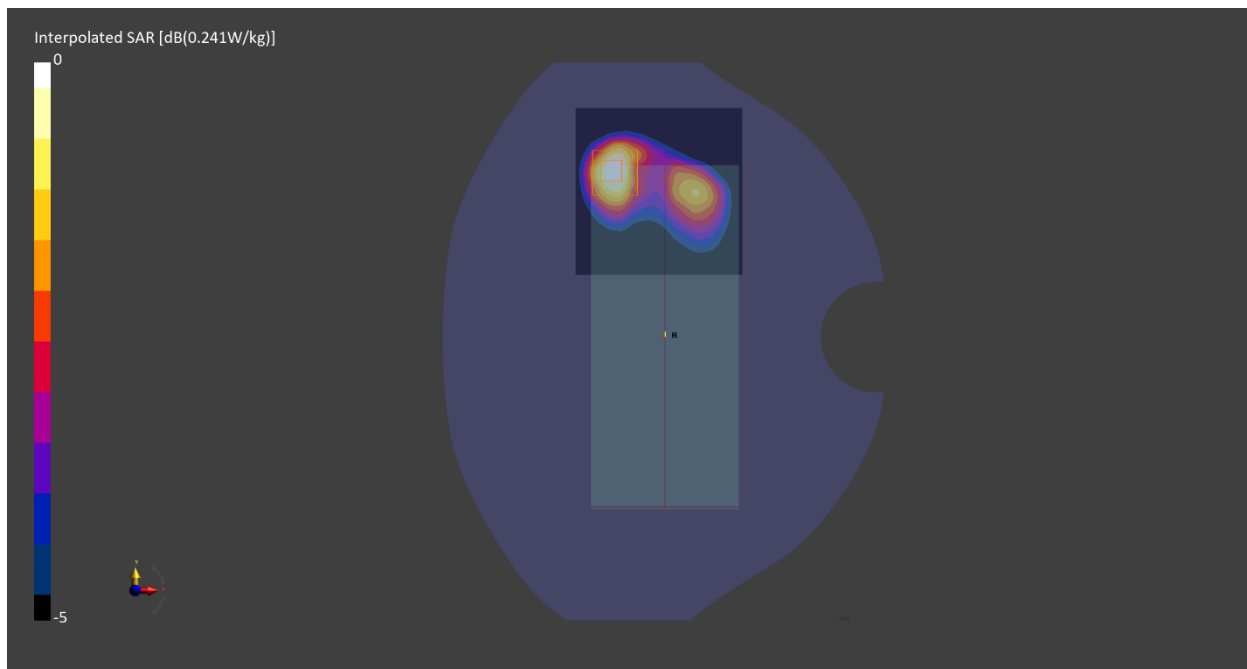
Probe Calibration Date	EX3DV4 - SN7709 2022-12-12	Phantom	Twin-SAM V8.0 (30deg probe tilt) - SN1742
DAE Calibration Date	DAE4 Sn1714 2022-11-23	TSL Meas. Date	HBBL-600-10000 2023-Feb-24

Scans Setup

	Area Scan	Zoom Scan
Grid Extents [mm]	80.0 x 80.0	30.0 x 30.0 x 30.0
Grid Steps [mm]	10.0 x 10.0	5.0 x 5.0 x 1.5
Sensor Surface [mm]	3.0	1.4
Graded Grid	n/a	Yes
M2/M1 [%]		79.2
Dist 3dB Peak [mm]		11.0

Measurement Results

	Area Scan	Zoom Scan
psSAR1g [W/Kg]	0.115	0.118
psSAR10g [W/Kg]	0.058	0.058
Power Drift [dB]	0.03	0.10



Measurement Report for WLAN 2.4GHz, CHEEK, Normal, WiFi Main

Exposure Conditions

Band	WLAN 2.4GHz	TSL Permittivity	41.2
Frequency [MHz] Channel Number	2412.0 1	TSL Conductivity [S/m]	1.79
Group UID	WLAN 10012-CAB	Phantom Section TSL	RightHead HSL
Conversion Factor	8.6	Test Distance [mm]	0.00
Communication Configuration	IEEE 802.11b WiFi 2.4 GHz (DSSS, 1 Mbps)		

Hardware Setup

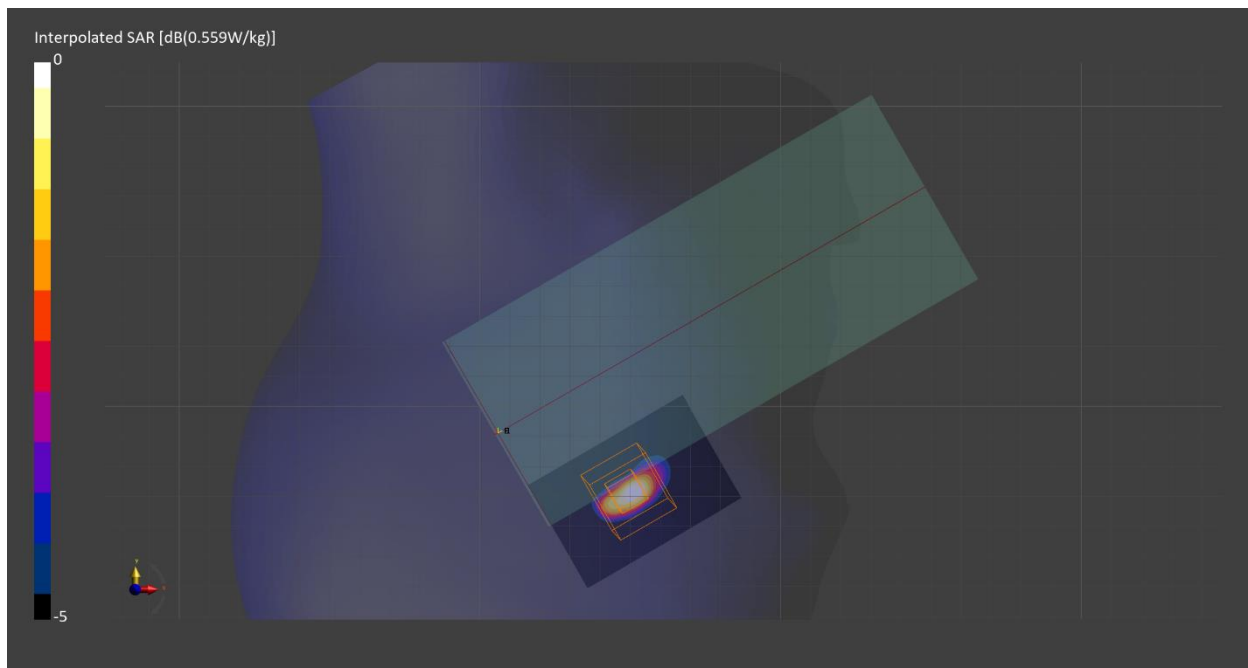
Probe Calibration Date	EX3DV4 - SN7709 2022-12-12	Phantom	Twin-SAM V8.0 (30deg probe tilt) - SN1742
DAE Calibration Date	DAE4 Sn1714 2022-11-23	TSL Meas. Date	HBBL-600-10000 2023-Feb-24

Scans Setup

	Area Scan	Zoom Scan
Grid Extents [mm]	40.0 x 60.0	30.0 x 30.0 x 30.0
Grid Steps [mm]	10.0 x 10.0	4.0 x 4.0 x 1.4
Sensor Surface [mm]	3.0	1.4
Graded Grid	n/a	Yes
M2/M1 [%]		73.0
Dist 3dB Peak [mm]		4.1

Measurement Results

	Area Scan	Zoom Scan
psSAR1g [W/Kg]	0.369	0.408
psSAR10g [W/Kg]	0.136	0.145
Power Drift [dB]	-0.01	-0.03



Measurement Report for WLAN 5GHz, EDGE LEFT, Normal, WiFi Main

Exposure Conditions

Band	WLAN 5GHz	TSL Permittivity	35.9
Frequency [MHz] Channel Number	5570.0 114	TSL Conductivity [S/m]	5.08
Group UID	WLAN 10554-AAD	Phantom Section TSL	Flat HSL
Conversion Factor	5.16	Test Distance [mm]	0.00
Communication Configuration	IEEE 802.11ac WiFi (160MHz, MCS0, 99pc duty cycle)		

Hardware Setup

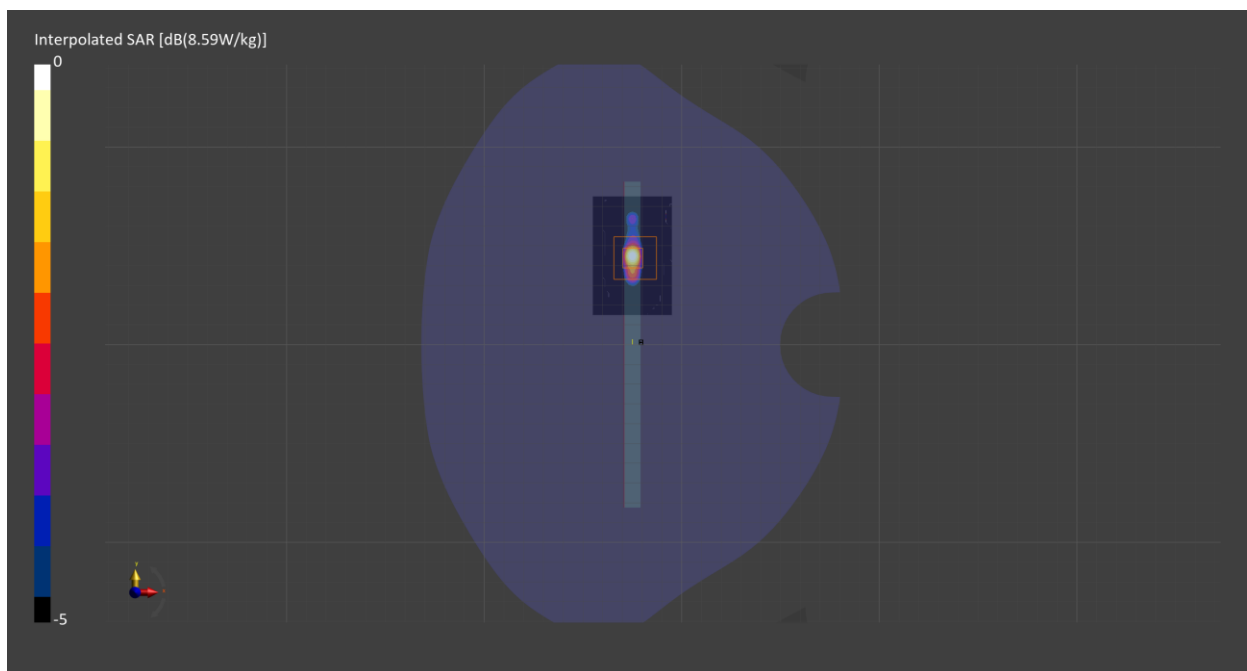
Probe Calibration Date	EX3DV4 - SN7711 2022-03-11	Phantom	Twin-SAM V8.0 (30deg probe tilt) - SN2084
DAE Calibration Date	DAE4 Sn1716 2022-03-08	TSL Meas. Date	HBBL600-10000V6 2023-Feb-24

Scans Setup

	Area Scan	Zoom Scan
Grid Extents [mm]	20.0 x 60.0	22.0 x 22.0 x 22.0
Grid Steps [mm]	10.0 x 10.0	2.6 x 2.6 x 1.2
Sensor Surface [mm]	3.0	1.4
Graded Grid	n/a	Yes
M2/M1 [%]		57.4
Dist 3dB Peak [mm]		4.0

Measurement Results

	Area Scan	Zoom Scan
psSAR1g [W/Kg]	1.32	1.40
psSAR10g [W/Kg]	0.309	0.307
Power Drift [dB]	-0.02	0.05



Measurement Report for Custom Band, BACK, Normal, CELL Main1

Exposure Conditions

Band	Custom Band	TSL Permittivity	57.6
Frequency [MHz] Channel Number	13.6 13600	TSL Conductivity [S/m]	0.735
Group UID	CW 0--	Phantom Section TSL	Flat HSL
Conversion Factor	15.8	Test Distance [mm]	0.00
Communication Configuration			CW

Hardware Setup

Probe Calibration Date	EX3DV4 - SN7710 2023-02-03	Phantom	ELI V8.0 (20deg probe tilt) - SN2081
DAE Calibration Date	DAE4 Sn1715 2023-01-23	TSL Meas. Date	HBBL4-250V3 2023-Mar-23

Scans Setup

	Area Scan	Zoom Scan
Grid Extents [mm]	60.0 x 60.0	30.0 x 30.0 x 30.0
Grid Steps [mm]	15.0 x 15.0	3.4 x 3.4 x 1.4
Sensor Surface [mm]	3.0	1.4
Graded Grid	n/a	Yes
M2/M1 [%]		52.4
Dist 3dB Peak [mm]		4.1

Measurement Results

	Area Scan	Zoom Scan
psSAR1g [W/Kg]	0.056	0.083
psSAR10g [W/Kg]	0.033	0.021
Power Drift [dB]	0.11	-0.09

