

2023-02-20 System Performance Check Report D1750V2 - SN1136

Summary

Dipole	D1750V2 - SN1136		
Frequency [MHz]	1750.0		
Phantom Section TSL	Flat HSL	Dev. Peak [%]	3.8
Power [dBm]	17.0	Iso. Error [%]	0.8

Exposure Conditions

Dipole Distance [mm]	10	TSL Permittivity	39.4
Conversion Factor	8.89	TSL Conductivity [S/m]	1.38

Hardware Setup

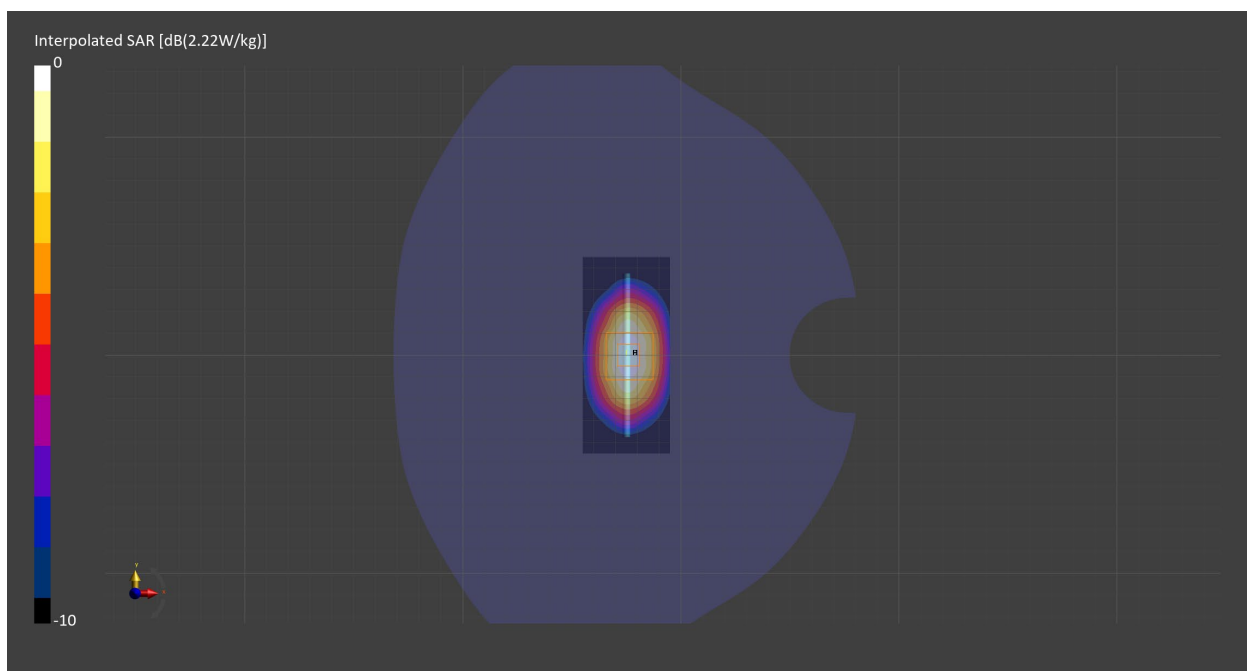
Probe Calibration Date	EX3DV4 - SN7711 2022-03-11	Phantom	Twin-SAM V8.0 (30deg probe tilt) - SN2084
DAE Calibration Date	DAE4 Sn1716 2022-03-08	TSL Meas. Date	HBBL600-10000V6 2023-Feb-20

Scans Setup

	Area Scan	Zoom Scan
Grid Extents [mm]	40.0 x 90.0	30.0 x 30.0 x 30.0
Grid Steps [mm]	10.0 x 15.0	6.0 x 6.0 x 1.5
Sensor Surface [mm]	3.0	1.4
Graded Grid	n/a	Yes
M2/M1 [%]		81.4
Dist 3dB Peak [mm]		10.9

Measurement Results

	Area Scan	Zoom Scan
psSAR1g [W/Kg]	1.78	1.78
psSAR10g [W/Kg]	0.956	0.948
Power Drift [dB]	0.01	0.00



2023-02-24 System Performance Check Report D5GHzV2 - SN1213

Summary

Dipole	D5GHzV2 - SN1213		
Frequency [MHz]	5600.0		
Phantom Section TSL	Flat HSL	Dev. Peak [%]	-5.6
Power [dBm]	17.0	Iso. Error [%]	1.4

Exposure Conditions

Dipole Distance [mm]	10	TSL Permittivity	35.9
Conversion Factor	5.16	TSL Conductivity [S/m]	5.10

Hardware Setup

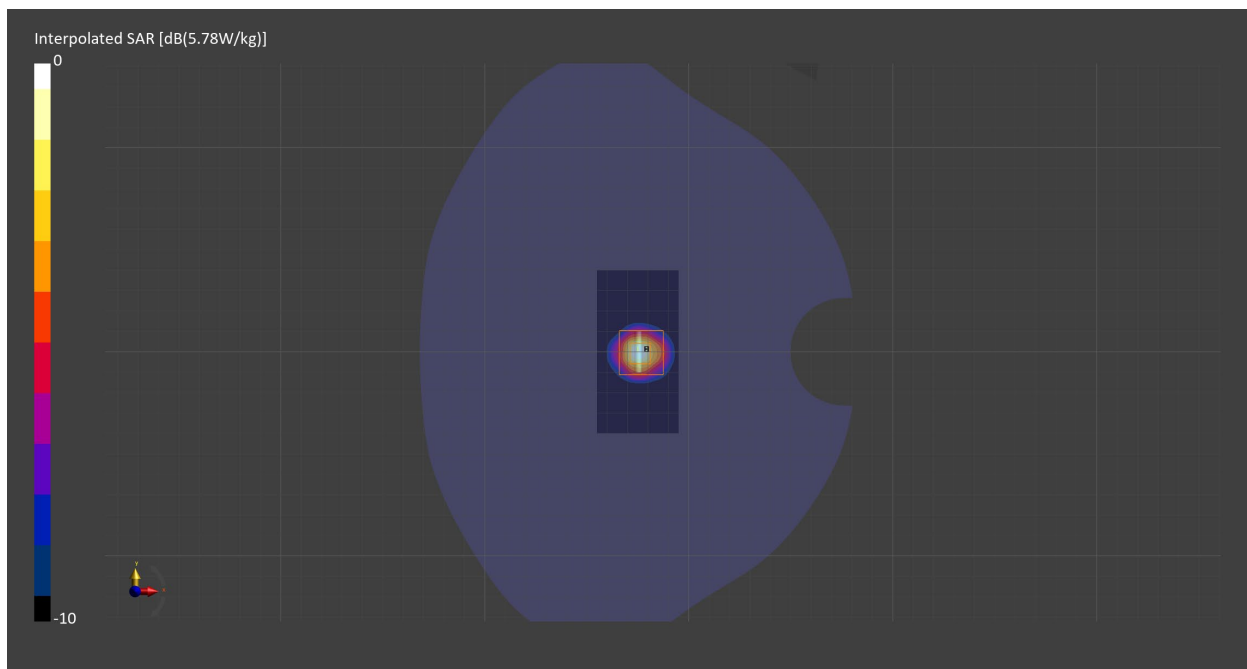
Probe Calibration Date	EX3DV4 - SN7711 2022-03-11	Phantom	Twin-SAM V8.0 (30deg probe tilt) - SN2084
DAE Calibration Date	DAE4 Sn1716 2022-03-08	TSL Meas. Date	HBBL600-10000V6 2023-Feb-24

Scans Setup

	Area Scan	Zoom Scan
Grid Extents [mm]	40.0 x 80.0	22.0 x 22.0 x 22.0
Grid Steps [mm]	10.0 x 10.0	4.0 x 4.0 x 1.4
Sensor Surface [mm]	3.0	1.4
Graded Grid	n/a	Yes
M2/M1 [%]		61.8
Dist 3dB Peak [mm]		7.4

Measurement Results

	Area Scan	Zoom Scan
psSAR1g [W/Kg]	3.58	3.85
psSAR10g [W/Kg]	1.01	1.09
Power Drift [dB]	-0.00	-0.01



2023-03-23 System Performance Check Report CLA-13 - SN1008

Summary

Dipole	CLA-13 - SN1008		
Frequency [MHz]	13.0		
Phantom Section TSL	Flat HSL	Dev. Peak [%]	n/a
Power [dBm]	16.5	Iso. Error [%]	-6.0

Exposure Conditions

Dipole Distance [mm]	0	TSL Permittivity	57.6
Conversion Factor	15.8	TSL Conductivity [S/m]	0.735

Hardware Setup

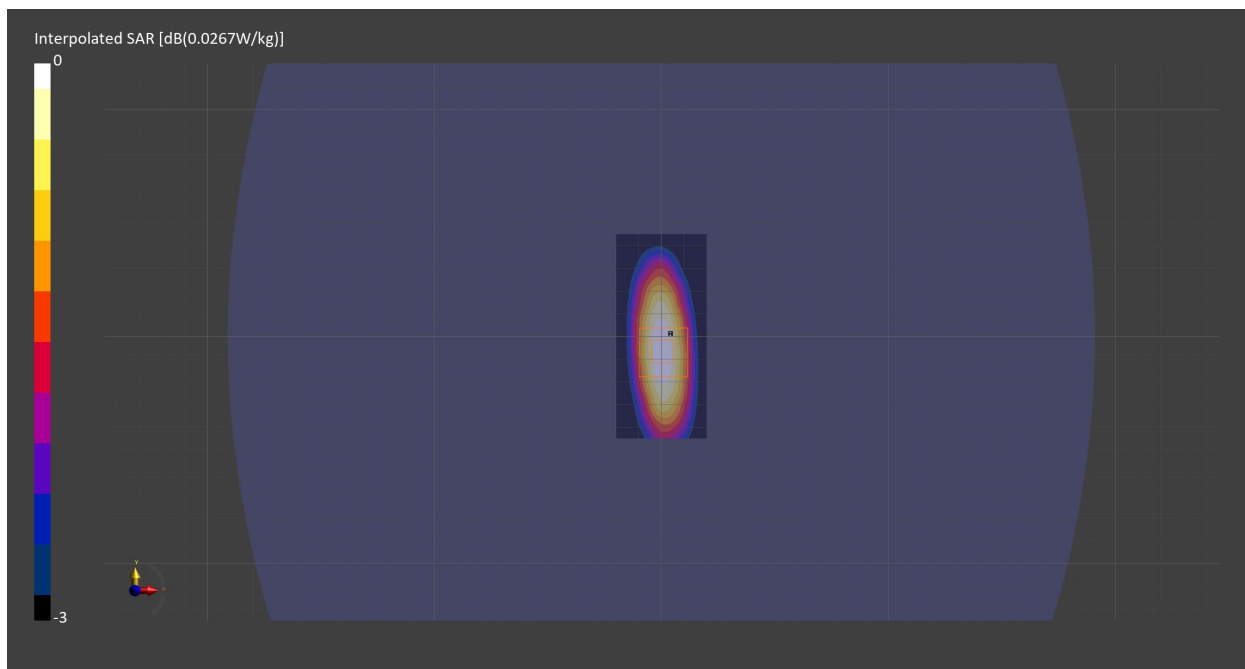
Probe Calibration Date	EX3DV4 - SN7710 2023-02-03	Phantom	ELI V8.0 (20deg probe tilt) - SN2081
DAE Calibration Date	DAE4 Sn1715 2023-01-23	TSL Meas. Date	HBBL4-250V3 2023-Mar-23

Scans Setup

	Area Scan	Zoom Scan
Grid Extents [mm]	40.0 x 90.0	30.0 x 30.0 x 30.0
Grid Steps [mm]	10.0 x 15.0	6.0 x 6.0 x 1.5
Sensor Surface [mm]	3.0	1.4
Graded Grid	n/a	Yes
M2/M1 [%]		75.5
Dist 3dB Peak [mm]		15.7

Measurement Results

	Area Scan	Zoom Scan
psSAR1g [W/Kg]	0.025	0.024
psSAR10g [W/Kg]	0.020	0.015
Power Drift [dB]	0.02	0.04



2023-02-20 System Performance Check Report D900V2 - SN1d180

Summary

Dipole	D900V2 - SN1d180		
Frequency [MHz]	900.0		
Phantom Section TSL	Flat HSL	Dev. Peak [%]	0.9
Power [dBm]	17.0	Iso. Error [%]	1.0

Exposure Conditions

Dipole Distance [mm]	15	TSL Permittivity	43.0
Conversion Factor	10.14	TSL Conductivity [S/m]	0.957

Hardware Setup

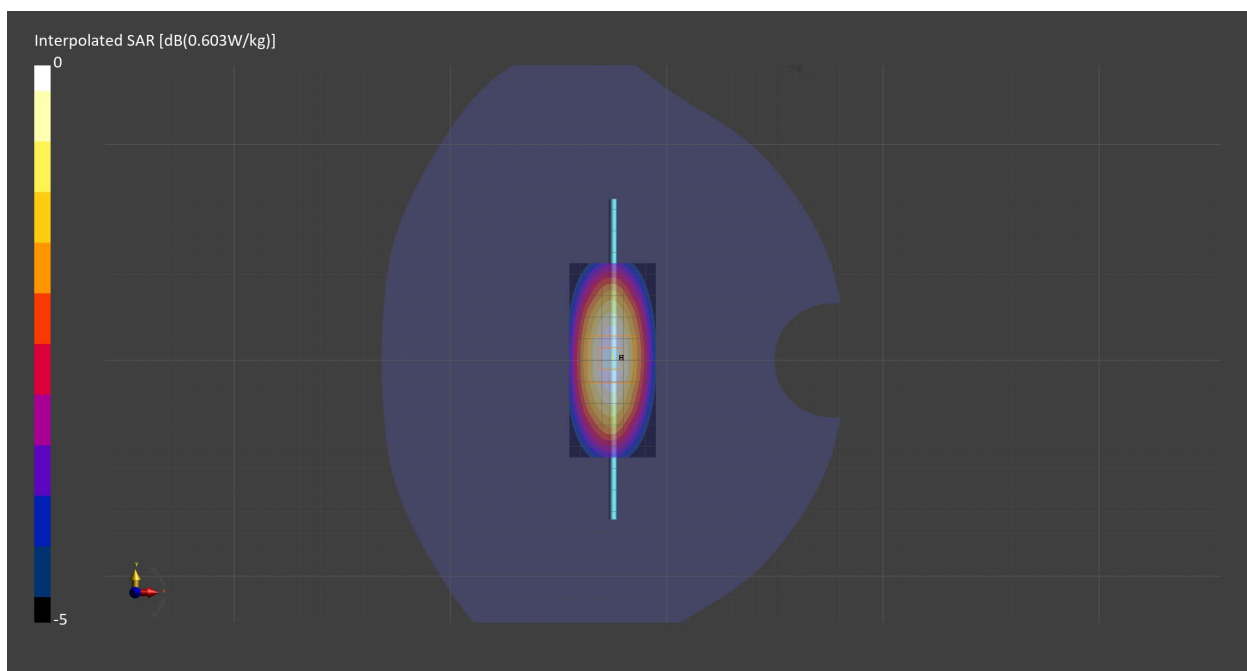
Probe Calibration Date	EX3DV4 - SN7710 2023-02-03	Phantom	Twin-SAM V8.0 (30deg probe tilt) - SN2082
DAE Calibration Date	DAE4 Sn1715 2023-01-23	TSL Meas. Date	HBBL600-10000V6 2023-Feb-20

Scans Setup

	Area Scan	Zoom Scan
Grid Extents [mm]	40.0 x 90.0	30.0 x 30.0 x 30.0
Grid Steps [mm]	10.0 x 15.0	6.0 x 6.0 x 1.5
Sensor Surface [mm]	3.0	1.4
Graded Grid	n/a	Yes
M2/M1 [%]		85.5
Dist 3dB Peak [mm]		19.7

Measurement Results

	Area Scan	Zoom Scan
psSAR1g [W/Kg]	0.519	0.523
psSAR10g [W/Kg]	0.339	0.339
Power Drift [dB]	0.01	0.02



2023-02-24 System Performance Check Report D750V3 - SN1139

Summary

Dipole	D750V3 - SN1139		
Frequency [MHz]	750.0		
Phantom Section TSL	Flat HSL	Dev. Peak [%]	-2.7
Power [dBm]	17.0	Iso. Error [%]	1.0

Exposure Conditions

Dipole Distance [mm]	15	TSL Permittivity	43.4
Conversion Factor	10.65	TSL Conductivity [S/m]	0.869

Hardware Setup

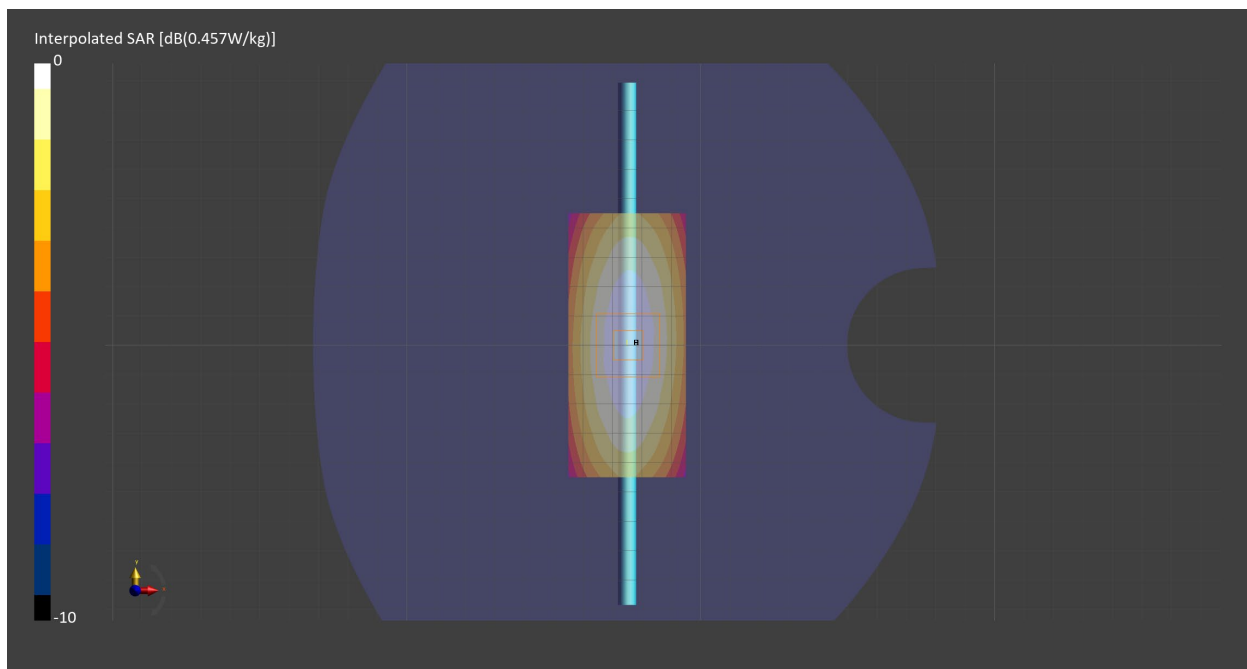
Probe Calibration Date	EX3DV4 - SN7710 2023-02-03	Phantom	Twin-SAM V8.0 (30deg probe tilt) - SN2082
DAE Calibration Date	DAE4 Sn1715 2023-01-23	TSL Meas. Date	HBBL600-10000V6 2023-Feb-24

Scans Setup

	Area Scan	Zoom Scan
Grid Extents [mm]	40.0 x 90.0	30.0 x 30.0 x 30.0
Grid Steps [mm]	10.0 x 15.0	6.0 x 6.0 x 1.5
Sensor Surface [mm]	3.0	1.4
Graded Grid	n/a	Yes
M2/M1 [%]		86.6
Dist 3dB Peak [mm]		> 15.0

Measurement Results

	Area Scan	Zoom Scan
psSAR1g [W/Kg]	0.396	0.396
psSAR10g [W/Kg]	0.264	0.262
Power Drift [dB]	-0.00	0.00



2023-02-20 System Performance Check Report D1900V2 - SN5d202

Summary

Dipole	D1900V2 - SN5d202		
Frequency [MHz]	1900.0		
Phantom Section TSL	Flat HSL	Dev. Peak [%]	1.2
Power [dBm]	17.0	Iso. Error [%]	-1.7

Exposure Conditions

Dipole Distance [mm]	10	TSL Permittivity	38.9
Conversion Factor	8.74	TSL Conductivity [S/m]	1.41

Hardware Setup

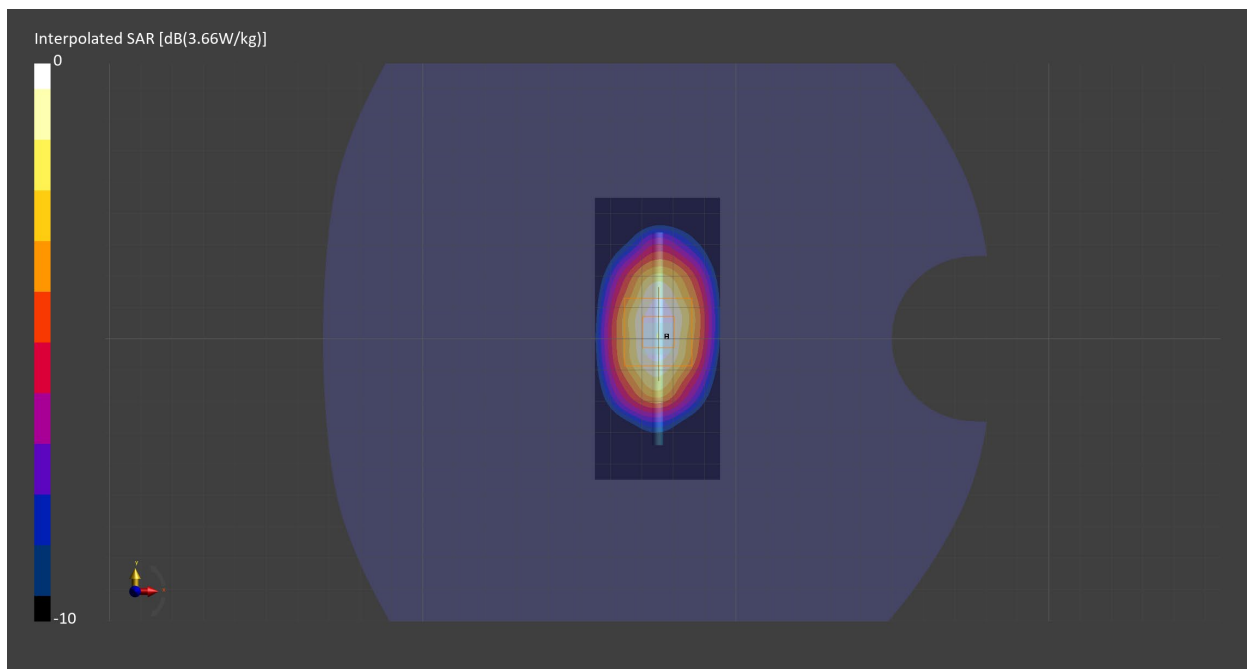
Probe Calibration Date	EX3DV4 - SN7709 2022-12-12	Phantom	Twin-SAM V8.0 (30deg probe tilt) - SN1742
DAE Calibration Date	DAE4 Sn1714 2022-11-23	TSL Meas. Date	HBBL1550-1950V3 2023-Feb-20

Scans Setup

	Area Scan	Zoom Scan
Grid Extents [mm]	40.0 x 90.0	30.0 x 30.0 x 30.0
Grid Steps [mm]	10.0 x 15.0	6.0 x 6.0 x 1.5
Sensor Surface [mm]	3.0	1.4
Graded Grid	n/a	Yes
M2/M1 [%]		81.4
Dist 3dB Peak [mm]		9.6

Measurement Results

	Area Scan	Zoom Scan
psSAR1g [W/Kg]	1.92	1.91
psSAR10g [W/Kg]	0.989	0.992
Power Drift [dB]	-0.02	-0.01



2023-02-24 System Performance Check Report D2450V2 - SN963

Summary

Dipole	D2450V2 - SN963		
Frequency [MHz]	2450.0		
Phantom Section TSL	Flat HSL	Dev. Peak [%]	-3.9
Power [dBm]	17.0	Iso. Error [%]	4.3

Exposure Conditions

Dipole Distance [mm]	10	TSL Permittivity	41.1
Conversion Factor	8.6	TSL Conductivity [S/m]	1.82

Hardware Setup

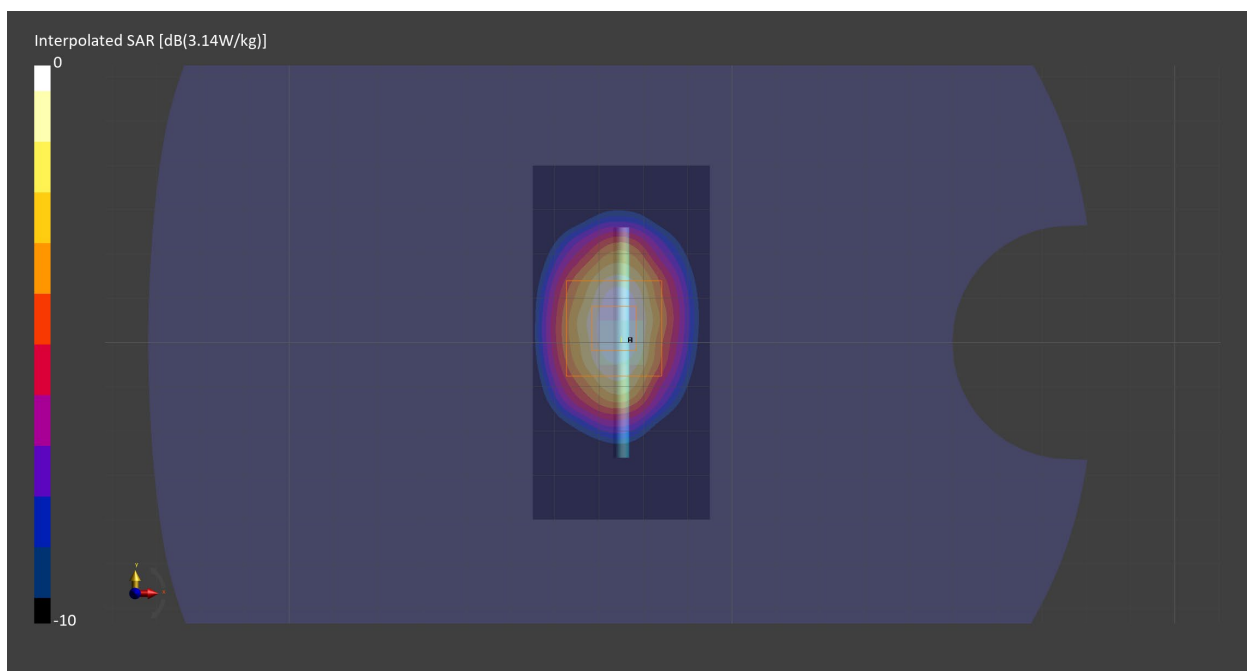
Probe Calibration Date	EX3DV4 - SN7709 2022-12-12	Phantom	Twin-SAM V8.0 (30deg probe tilt) - SN1742
DAE Calibration Date	DAE4 Sn1714 2022-11-23	TSL Meas. Date	HBBL-600-10000 2023-Feb-24

Scans Setup

	Area Scan	Zoom Scan
Grid Extents [mm]	40.0 x 80.0	30.0 x 30.0 x 30.0
Grid Steps [mm]	10.0 x 10.0	5.0 x 5.0 x 1.5
Sensor Surface [mm]	3.0	1.4
Graded Grid	n/a	Yes
M2/M1 [%]		79.8
Dist 3dB Peak [mm]		9.0

Measurement Results

	Area Scan	Zoom Scan
psSAR1g [W/Kg]	2.41	2.41
psSAR10g [W/Kg]	1.11	1.12
Power Drift [dB]	-0.00	-0.00



2023-02-24 System Performance Check Report D2600V2 - SN1104

Summary

Dipole	D2600V2 - SN1104		
Frequency [MHz]	2600.0		
Phantom Section TSL	Flat HSL	Dev. Peak [%]	-1.1
Power [dBm]	17.0	Iso. Error [%]	3.2

Exposure Conditions

Dipole Distance [mm]	10	TSL Permittivity	40.9
Conversion Factor	8.2	TSL Conductivity [S/m]	1.94

Hardware Setup

Probe Calibration Date	EX3DV4 - SN7709 2022-12-12	Phantom	Twin-SAM V8.0 (30deg probe tilt) - SN1742
DAE Calibration Date	DAE4 Sn1714 2022-11-23	TSL Meas. Date	HBBL-600-10000 2023-Feb-24

Scans Setup

	Area Scan	Zoom Scan
Grid Extents [mm]	40.0 x 80.0	30.0 x 30.0 x 30.0
Grid Steps [mm]	10.0 x 10.0	5.0 x 5.0 x 1.5
Sensor Surface [mm]	3.0	1.4
Graded Grid	n/a	Yes
M2/M1 [%]		78.8
Dist 3dB Peak [mm]		8.3

Measurement Results

	Area Scan	Zoom Scan
psSAR1g [W/Kg]	2.74	2.73
psSAR10g [W/Kg]	1.21	1.22
Power Drift [dB]	-0.01	0.00

