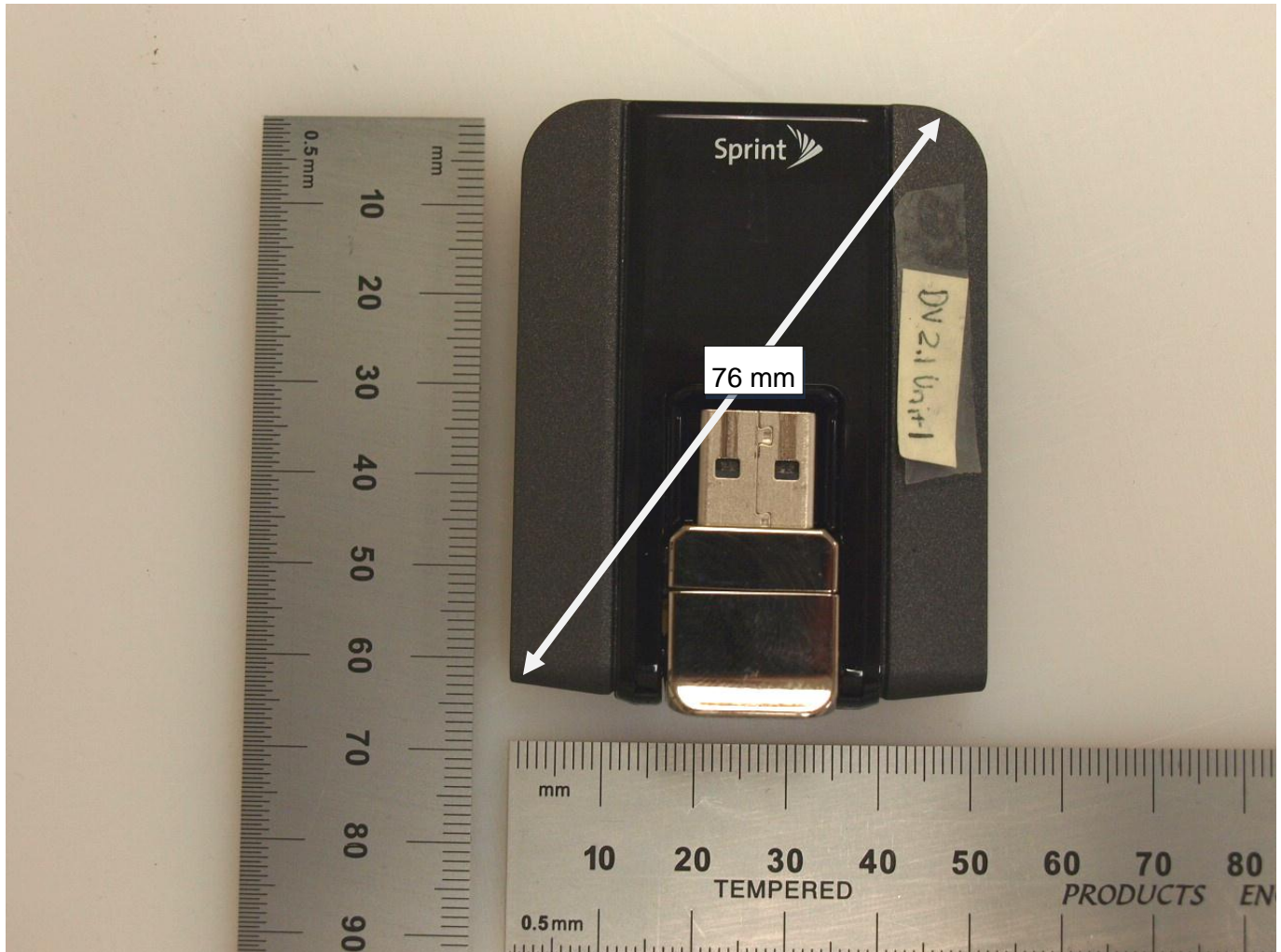


16. DUT Photos

16.1. External Photos



Front View of the DUT



Rear View of the DUT



16.2. All Possible Operation Configurations

16.2.1. Horizontal Up



Bottom Tip (selected for SAR test)



Horizontal Up (selected for SAR test)

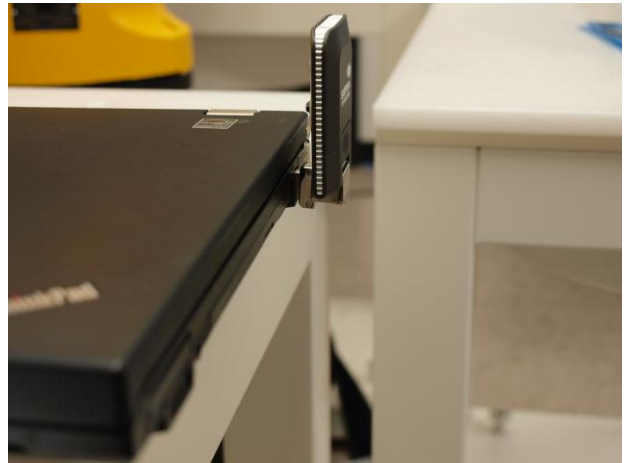


16.2.1. Horizontal Down



Horizontal Down (selected for SAR test)

16.2.1. Vertical Front



Vertical Front (selected for SAR test)



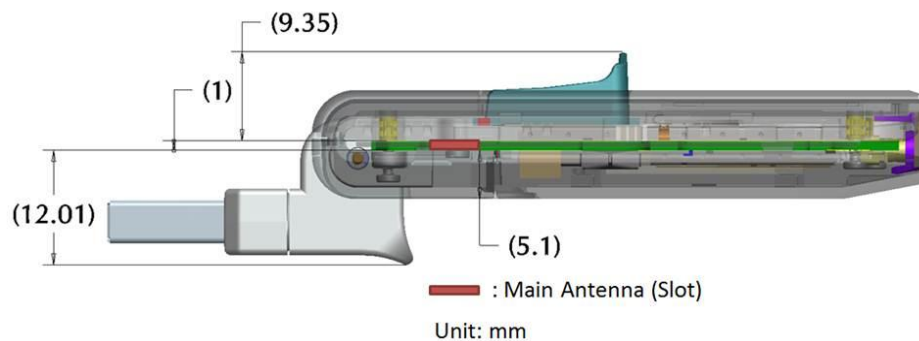
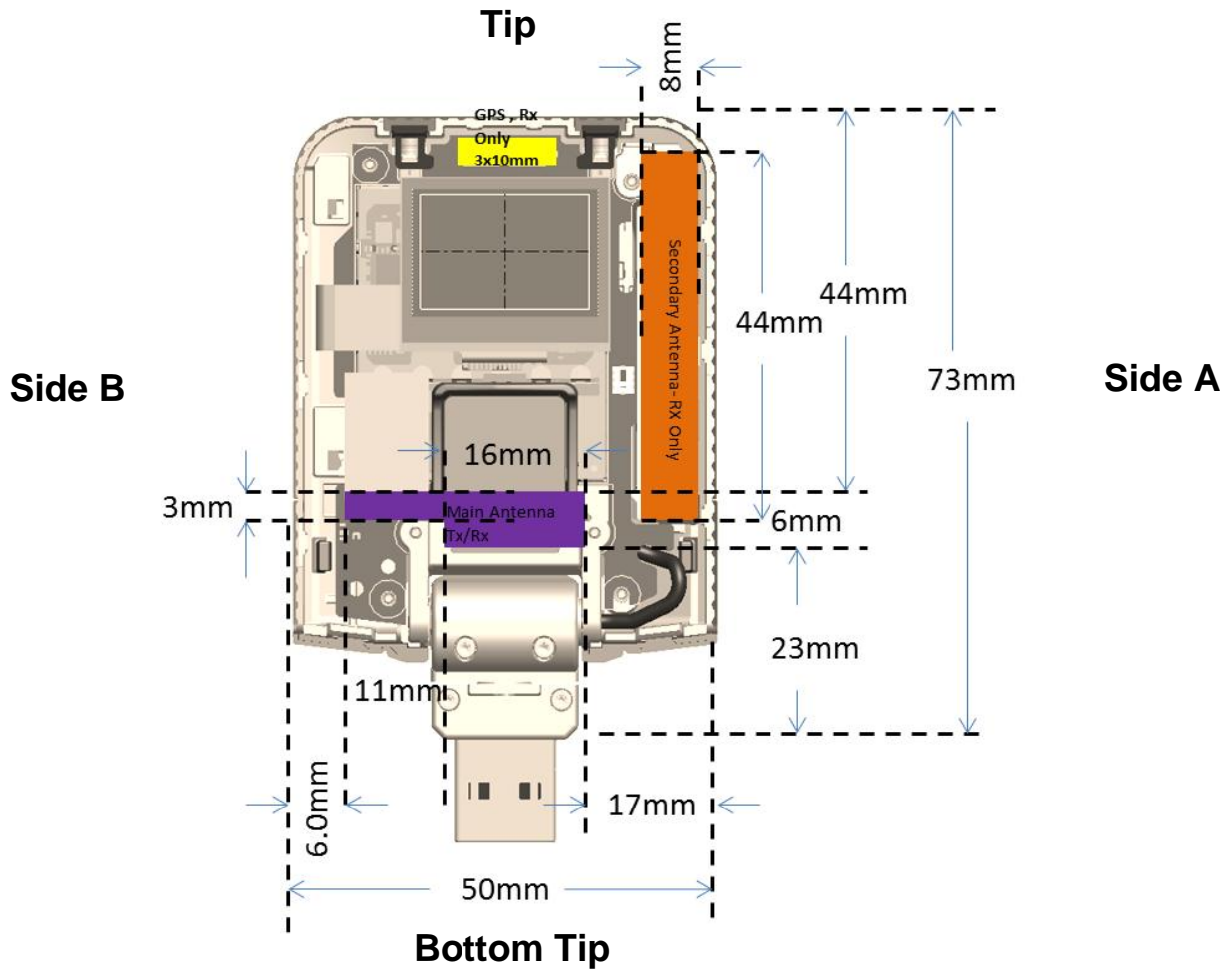
16.2.1. Vertical Back



Vertical Back (selected for SAR test)



17. Antenna Location and Separation Distances



18. Photos of Normal Operation Configurations

Horizontal-Up (A)



Horizontal-Down (B)
(With USB cable)



Vertical-Front (C)



Vertical-Back (D)
(With USB cable)

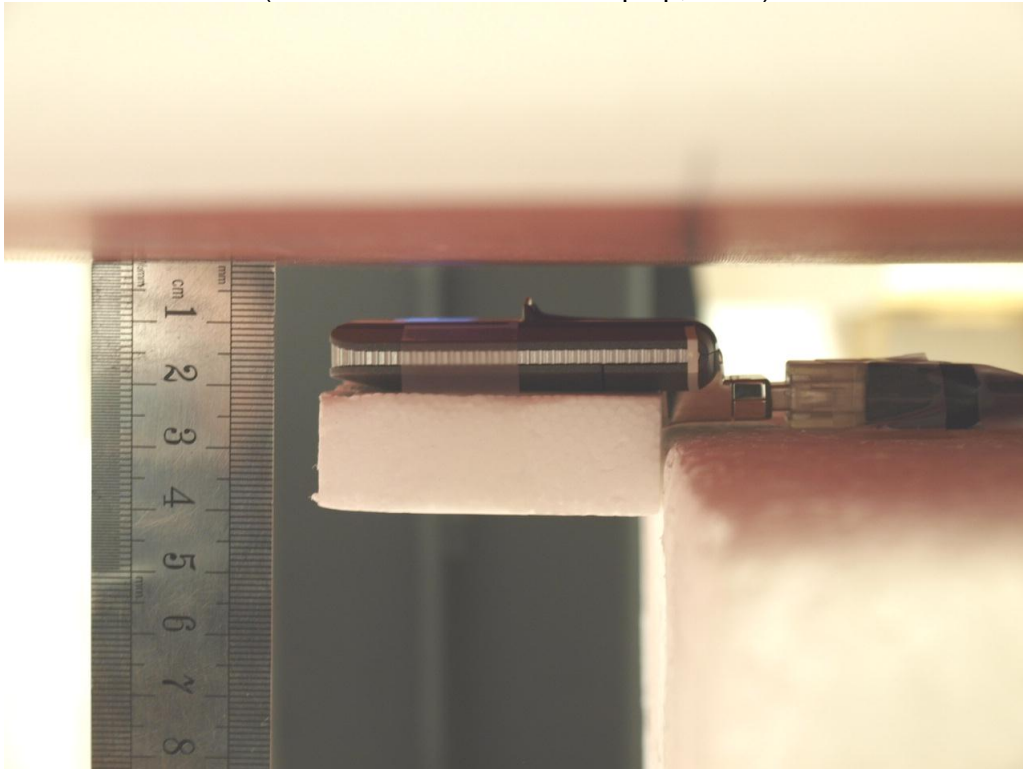


Bottom Tip
w/ 5 mm separation distance

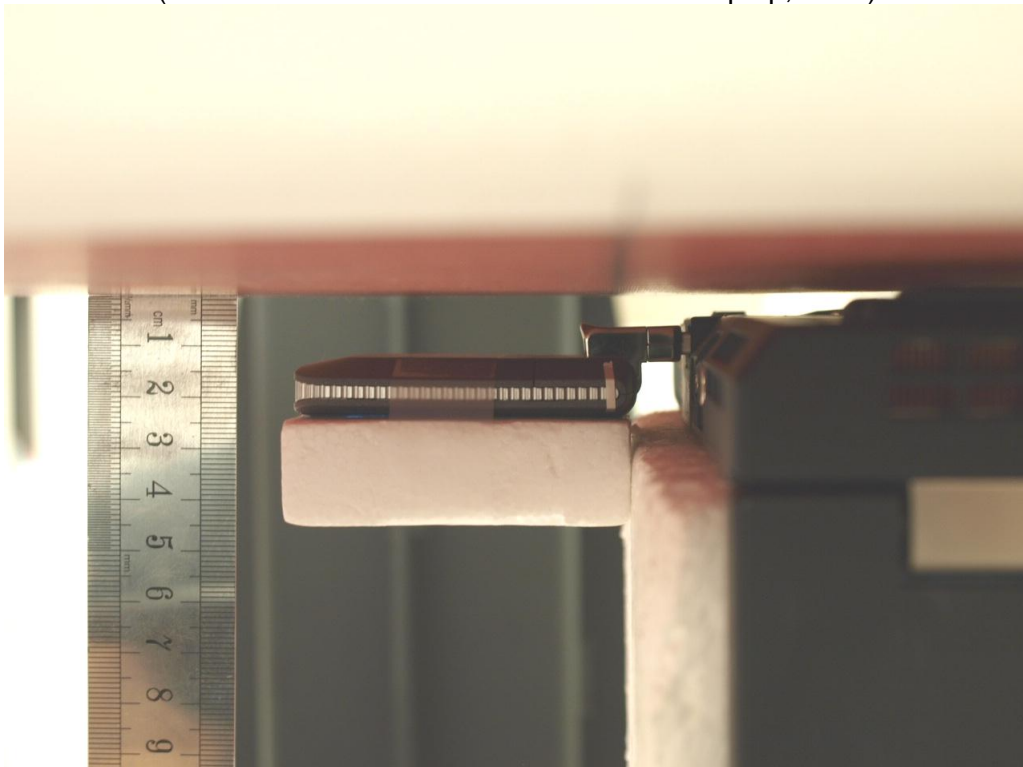


19. Setup Photos

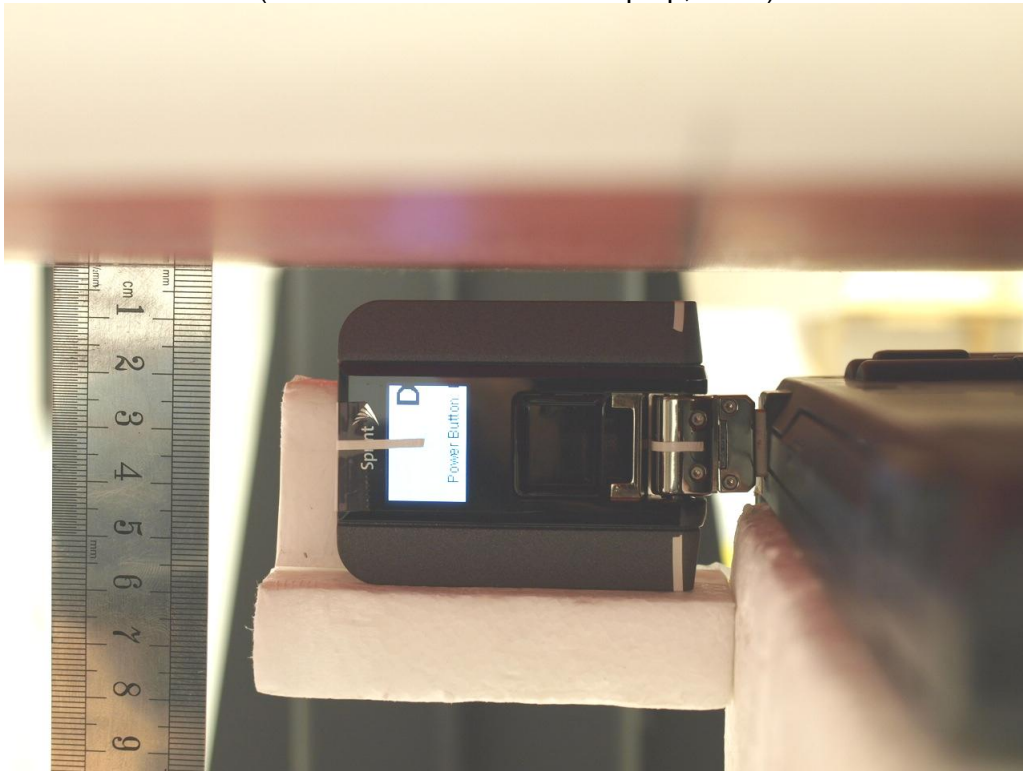
Horizontal-Up w/ 5-mm separation distance (LCD face down to Phantom)
(Inserted to Host: Lenovo laptop, T410)



Horizontal-Down w/ 5 mm separation distance (LCD face up to Phantom)
(w/ short USB cable connected to Lenovo laptop, T410)



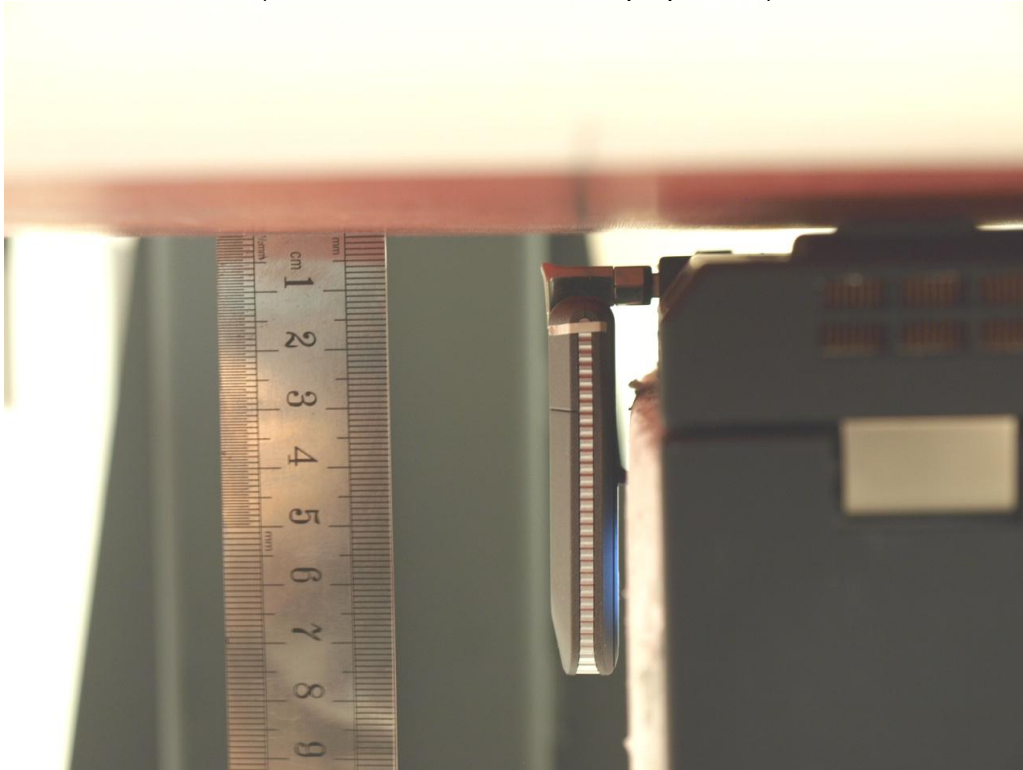
Vertical Front w/ 5mm separation distance (Side A)
(Inserted to Host: Lenovo laptop, T410)



Vertical Back w/ 5mm separation distance (Side B)
(w/ short USB cable connected to Lenovo laptop, T410)



Bottom Tip w/ 5mm separation distance
(Inserted to Host: Lenovo laptop, T410)



END OF REPORT