

System Check_Head_2600MHz

Communication System: ; Frequency: 2600.0

Medium: HSL_2600_221021. Medium parameters used: $f = 2600.0$ MHz; $\sigma = 1.96$ S/m; $\epsilon_r = 38.6$

Ambient Temperature: 23.5°C; Liquid Temperature: 22.5°C

DASY6 Configuration:

- Probe: EX3DV4 - SN3728; ConvF(7.26, 7.26, 7.26); Calibrated: 2022-03-02
- Sensor-Surface: 1.4 mm
- Electronics: DAE4 Sn1424; Calibrated: 2022-01-20
- Phantom: Twin-SAM V4.0 (30deg probe tilt); Serial: 1488; Section: Flat
- Measurement Software: cDASY6 V6.6.0.13926
- UID: CW,0--

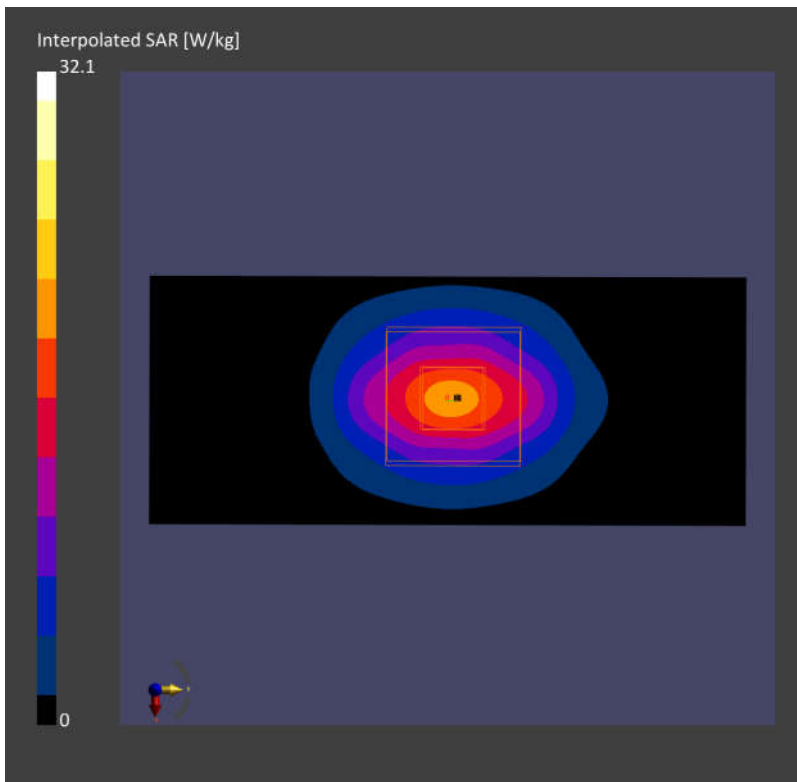
Area Scan (40.0 mm x 96.0 mm): Measurement Grid: 10.0 mm x 12.0 mm

SAR (1g) = 14.85 W/kg; SAR (10g) = 6.46 W/kg;

Zoom Scan (30.0 mm x 30.0 mm x 30.0 mm): Measurement Grid: 5.0 mm x 5.0 mm x 1.5 mm

Power Drift = -0.11 dB

SAR (1g) = 14.94 W/kg; SAR (10g) = 6.58 W/kg;



System Check_Head_3500MHz

Communication System: ; Frequency: 3500.0

Medium: HSL_3500_221021. Medium parameters used: $f= 3500.0$ MHz; $\sigma= 2.96$ S/m; $\epsilon_r = 37.6$

Ambient Temperature: 23.5°C; Liquid Temperature: 22.5°C

DASY6 Configuration:

- Probe: EX3DV4 - SN3728; ConvF(6.61, 6.61, 6.61); Calibrated: 2022-03-02
- Sensor-Surface: 1.4 mm
- Electronics: DAE4 Sn1424; Calibrated: 2022-01-20
- Phantom: Twin-SAM V4.0 (30deg probe tilt); Serial: 1488; Section: Flat
- Measurement Software: cDASY6 V6.6.0.13926
- UID: CW,0--

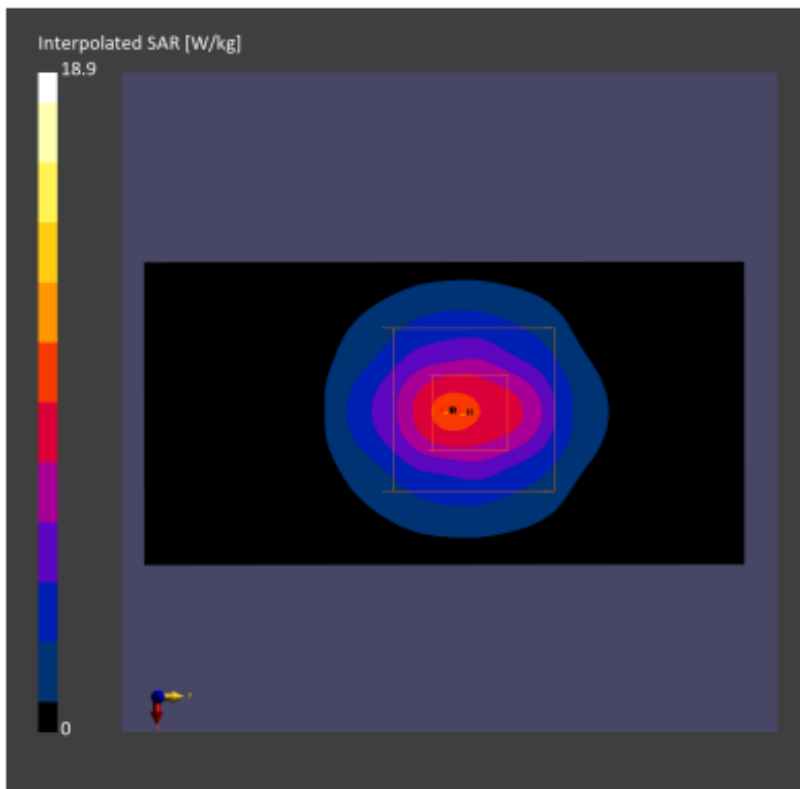
Area Scan (40.0 mm x 80.0 mm): Measurement Grid: 10.0 mm x 10.0 mm

SAR (1g) = 6.58 W/kg; SAR (10g) = 2.48 W/kg;

Zoom Scan (28.0 mm x 28.0 mm x 28.0 mm): Measurement Grid: 5.0 mm x 5.0 mm x 1.4 mm

Power Drift = -0.12 dB

SAR (1g) = 6.76 W/kg; SAR (10g) = 2.56 W/kg;



Measurement Report for Device
Device Under Test Properties

Model, Manufacturer	Dimensions [mm]	IMEI	DUT Type
Device,	100.0 x 100.0 x 100.0		5G Verification Source

Exposure Conditions

Phantom Section	Position, Test Distance [mm]	Frequency [MHz]	Conversion Factor
5G	FRONT, 5.55	30000.0	1.0

Hardware Setup

Phantom	Medium	Probe, Calibration Date	DAE, Calibration Date
mmWave - xxxx	Air -	EUmmWV4 - SN9441_F1-55GHz, 2021-11-24	DAE4 Sn854, 2022-08-24

Scans Setup

Scan Type	5G Scan
Grid Extents [mm]	60.0 x 60.0
Grid Steps [lambda]	0.25 x 0.25
Sensor Surface [mm]	5.55

Measurement Results

Date	2022-10-21, 09:54
Avg. Area [cm ²]	4.00
psPDn+ [W/m ²]	32.2
psPDtot+ [W/m ²]	32.5
H _{max} [A/m]	0.351
E _{max} [V/m]	142
max(Stot) [W/m ²]	45.1
Power Drift [dB]	-0.15

