

## Measurement Report for Device

### Device Under Test Properties

Model, Manufacturer	Dimensions [mm]	IMEI	DUT Type
Device,	104.0 x 104.0 x 21.5		Hotspot

### Exposure Conditions

Phantom Section	Position, Test Distance [mm]	Frequency [MHz]	Conversion Factor
5G	EDGE LEFT, 10.00	27925.0	1.0

### Hardware Setup

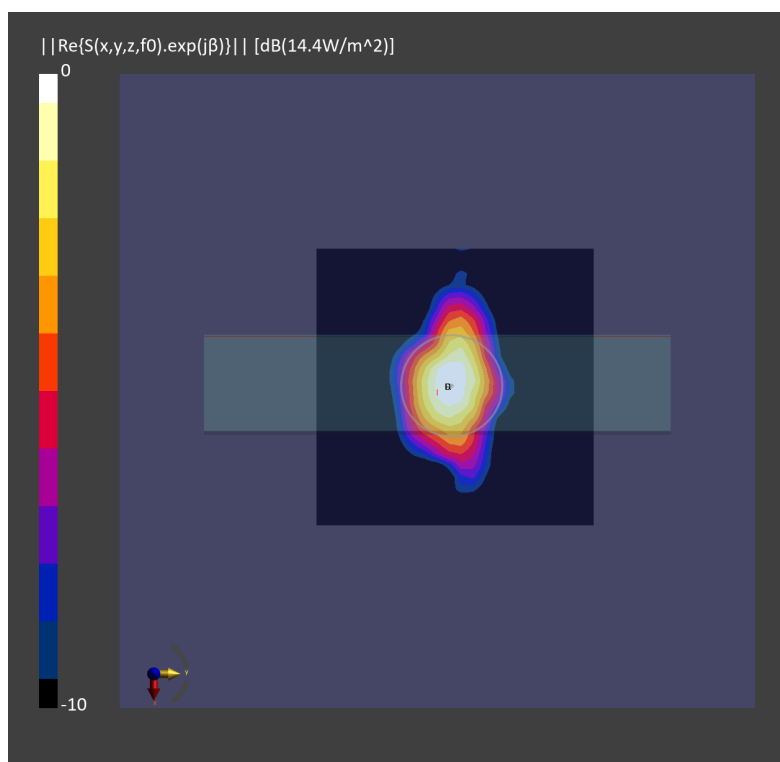
Phantom	Medium	Probe, Calibration Date	DAE, Calibration Date
mmWave - xxxx	Air -	EUmmWV4 - SN9441_F1-55GHz, 2021-11-24	DAE4 Sn376, 2021-11-22

### Scans Setup

Scan Type	5G Scan
Grid Extents [mm]	60.0 x 60.0
Grid Steps [lambda]	0.25 x 0.25
Sensor Surface [mm]	10.0

### Measurement Results

Date	2022-09-17
Avg. Area [cm <sup>2</sup> ]	4.00
psPDn+ [W/m <sup>2</sup> ]	7.57
psPDtot+ [W/m <sup>2</sup> ]	7.92
H <sub>max</sub> [A/m]	0.193
E <sub>max</sub> [V/m]	76.8
max(Stot) [W/m <sup>2</sup> ]	14.4
Power Drift [dB]	-0.10



## Measurement Report for Device

### Device Under Test Properties

Model, Manufacturer	Dimensions [mm]	IMEI	DUT Type
Device,	104.0 x 104.0 x 21.5		Hotspot

### Exposure Conditions

Phantom Section	Position, Test Distance [mm]	Frequency [MHz]	Conversion Factor
5G	FRONT, 10.00	27925.0	1.0

### Hardware Setup

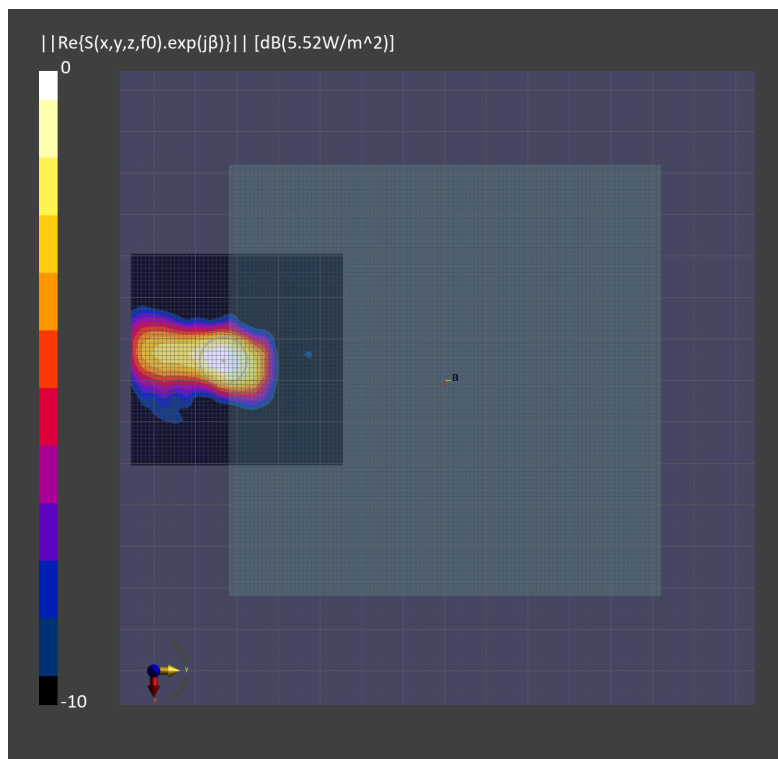
Phantom	Medium	Probe, Calibration Date	DAE, Calibration Date
mmWave - xxxx	Air -	EUmmWV4 - SN9441_F1-55GHz, 2021-11-24	DAE4 Sn376, 2021-11-22

### Scans Setup

Scan Type	5G Scan
Grid Extents [mm]	50.0 x 50.0
Grid Steps [lambda]	0.25 x 0.25
Sensor Surface [mm]	10.0

### Measurement Results

Date	2022-09-17
Avg. Area [cm <sup>2</sup> ]	1.00
psPDn+ [W/m <sup>2</sup> ]	4.22
psPDtot+ [W/m <sup>2</sup> ]	4.28
H <sub>max</sub> [A/m]	0.122
E <sub>max</sub> [V/m]	47.4
max(Stot) [W/m <sup>2</sup> ]	5.52
Power Drift [dB]	0.10



## Measurement Report for Device

### Device Under Test Properties

Model, Manufacturer	Dimensions [mm]	IMEI	DUT Type
Device,	104.0 x 104.0 x 21.5		Hotspot

### Exposure Conditions

Phantom Section	Position, Test Distance [mm]	Frequency [MHz]	Conversion Factor
5G	BACK, 10.00	27925.0	1.0

### Hardware Setup

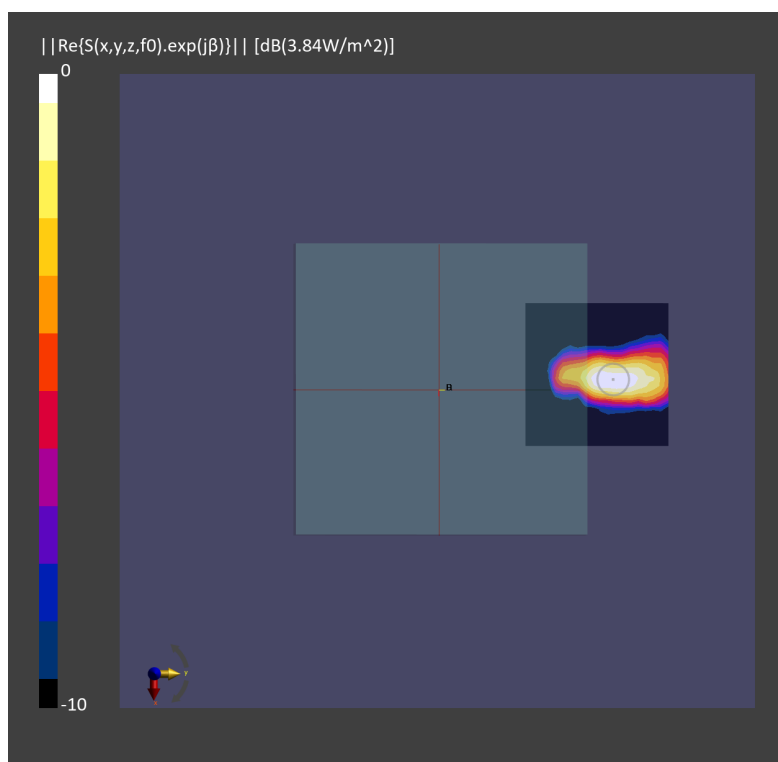
Phantom	Medium	Probe, Calibration Date	DAE, Calibration Date
mmWave - xxxx	Air -	EUmmWV4 - SN9441_F1-55GHz, 2021-11-24	DAE4 Sn376, 2021-11-22

### Scans Setup

Scan Type	5G Scan
Grid Extents [mm]	50.0 x 50.0
Grid Steps [lambda]	0.25 x 0.25
Sensor Surface [mm]	10.0

### Measurement Results

Date	2022-09-17
Avg. Area [cm <sup>2</sup> ]	1.00
psPDn+ [W/m <sup>2</sup> ]	3.11
psPDtot+ [W/m <sup>2</sup> ]	3.21
H <sub>max</sub> [A/m]	0.098
E <sub>max</sub> [V/m]	39.9
max(Stot) [W/m <sup>2</sup> ]	3.84
Power Drift [dB]	-0.01



## Measurement Report for Device

### Device Under Test Properties

Model, Manufacturer	Dimensions [mm]	IMEI	DUT Type
Device,	104.0 x 104.0 x 21.5		Phone

### Exposure Conditions

Phantom Section	Position, Test Distance [mm]	Frequency [MHz]	Conversion Factor
5G	EDGE LEFT, 10.00	27925.0	1.0

### Hardware Setup

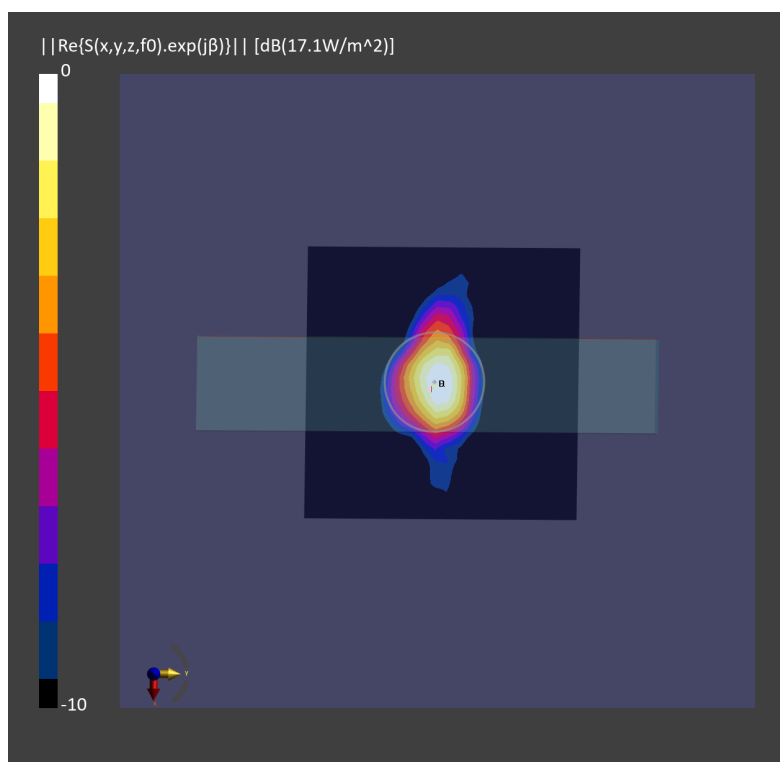
Phantom	Medium	Probe, Calibration Date	DAE, Calibration Date
mmWave - xxxx	Air -	EUmmWV4 - SN9441_F1-55GHz, 2021-11-24	DAE4 Sn376, 2021-11-22

### Scans Setup

Scan Type	5G Scan
Grid Extents [mm]	60.0 x 60.0
Grid Steps [lambda]	0.25 x 0.25
Sensor Surface [mm]	10.0

### Measurement Results

Date	2022-09-17
Avg. Area [cm <sup>2</sup> ]	4.00
psPDn+ [W/m <sup>2</sup> ]	7.55
psPDtot+ [W/m <sup>2</sup> ]	8.01
H <sub>max</sub> [A/m]	0.213
E <sub>max</sub> [V/m]	82.7
max(Stot) [W/m <sup>2</sup> ]	17.1
Power Drift [dB]	-0.02



## Measurement Report for Device

### Device Under Test Properties

Model, Manufacturer	Dimensions [mm]	IMEI	DUT Type
Device,	104.0 x 104.0 x 21.5		Hotspot

### Exposure Conditions

Phantom Section	Position, Test Distance [mm]	Frequency [MHz]	Conversion Factor
5G	FRONT, 10.00	27925.0	1.0

### Hardware Setup

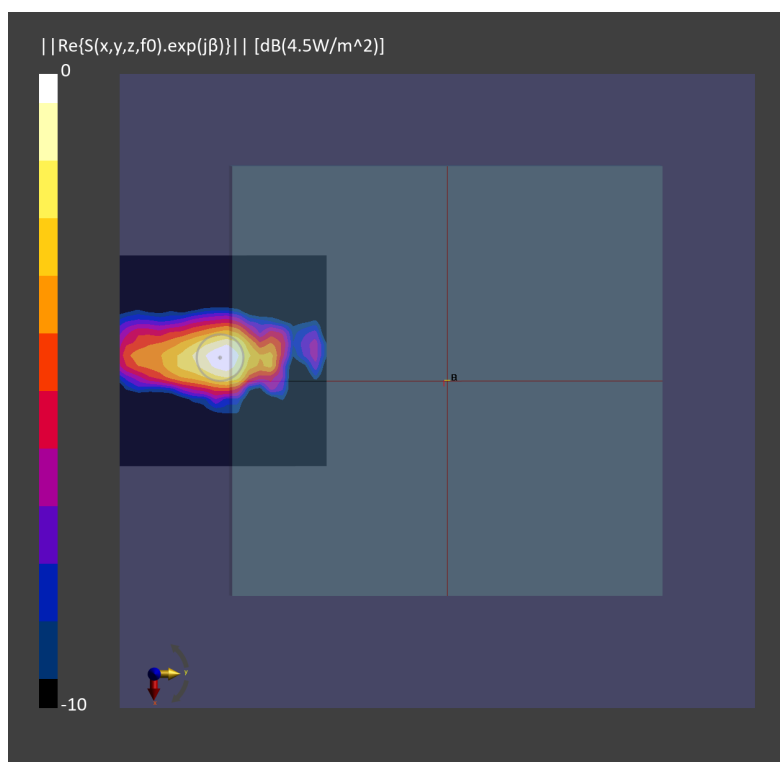
Phantom	Medium	Probe, Calibration Date	DAE, Calibration Date
mmWave - xxxx	Air -	EUmmWV4 - SN9441_F1-55GHz, 2021-11-24	DAE4 Sn376, 2021-11-22

### Scans Setup

Scan Type	5G Scan
Grid Extents [mm]	50.0 x 50.0
Grid Steps [lambda]	0.25 x 0.25
Sensor Surface [mm]	10.0

### Measurement Results

Date	2022-09-17
Avg. Area [cm <sup>2</sup> ]	1.00
psPDn+ [W/m <sup>2</sup> ]	3.38
psPDtot+ [W/m <sup>2</sup> ]	3.48
H <sub>max</sub> [A/m]	0.110
E <sub>max</sub> [V/m]	41.6
max(Stot) [W/m <sup>2</sup> ]	4.50
Power Drift [dB]	-0.03



## Measurement Report for Device

### Device Under Test Properties

Model, Manufacturer	Dimensions [mm]	IMEI	DUT Type
Device,	104.0 x 104.0 x 21.5		Hotspot

### Exposure Conditions

Phantom Section	Position, Test Distance [mm]	Frequency [MHz]	Conversion Factor
5G	BACK, 10.00	27925.0	1.0

### Hardware Setup

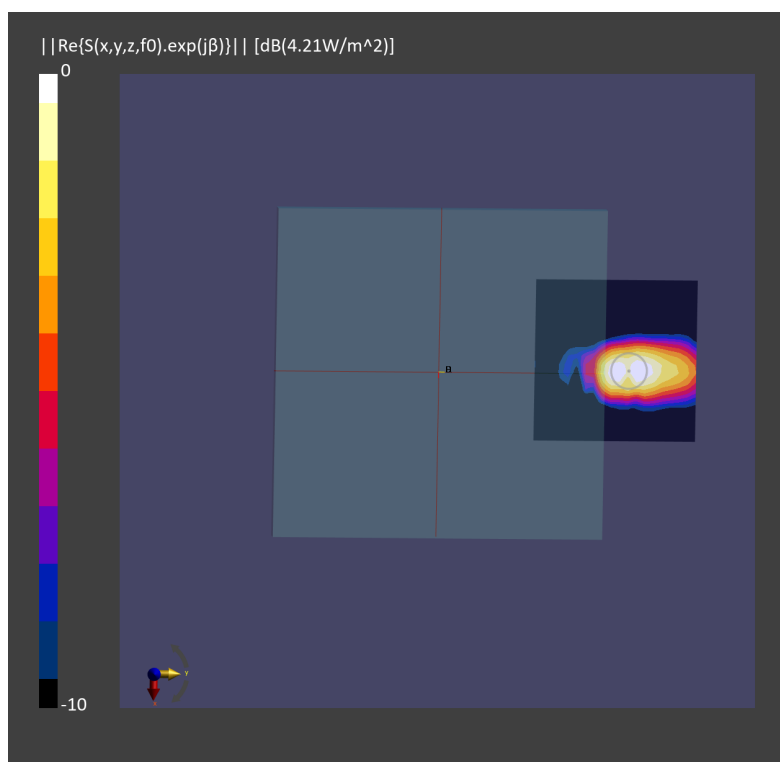
Phantom	Medium	Probe, Calibration Date	DAE, Calibration Date
mmWave - xxxx	Air -	EUmmWV4 - SN9441_F1-55GHz, 2021-11-24	DAE4 Sn376, 2021-11-22

### Scans Setup

Scan Type	5G Scan
Grid Extents [mm]	50.0 x 50.0
Grid Steps [lambda]	0.25 x 0.25
Sensor Surface [mm]	10.0

### Measurement Results

Date	2022-09-17
Avg. Area [cm <sup>2</sup> ]	1.00
psPDn+ [W/m <sup>2</sup> ]	3.33
psPDtot+ [W/m <sup>2</sup> ]	3.42
H <sub>max</sub> [A/m]	0.113
E <sub>max</sub> [V/m]	44.3
max(Stot) [W/m <sup>2</sup> ]	4.21
Power Drift [dB]	0.09



## Measurement Report for Device

### Device Under Test Properties

Model, Manufacturer	Dimensions [mm]	IMEI	DUT Type
Device,	104.0 x 104.0 x 21.5		Hotspot

### Exposure Conditions

Phantom Section	Position, Test Distance [mm]	Frequency [MHz]	Conversion Factor
5G	EDGE RIGHT, 10.00	27925.0	1.0

### Hardware Setup

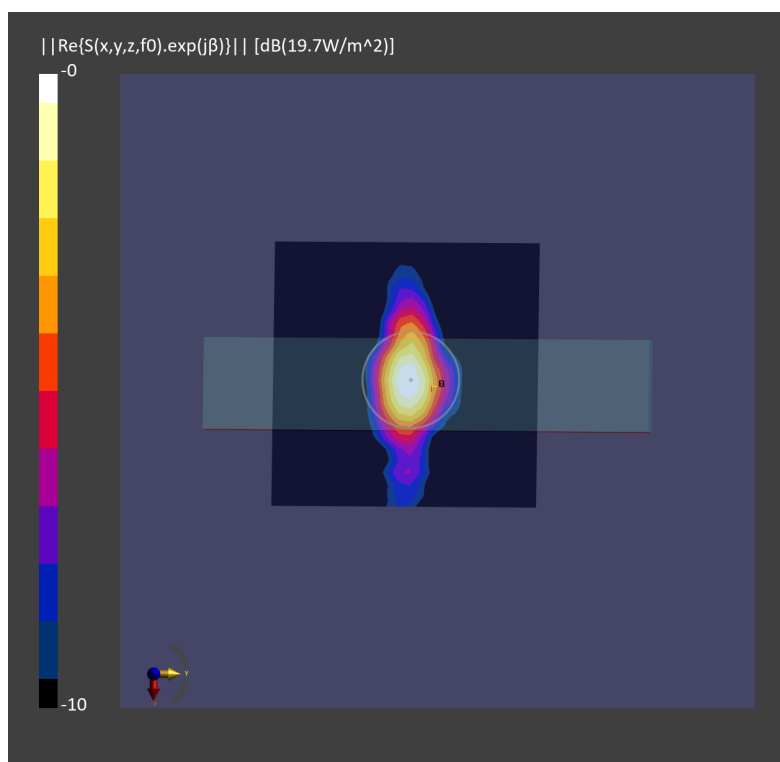
Phantom	Medium	Probe, Calibration Date	DAE, Calibration Date
mmWave - xxxx	Air -	EUmmWV4 - SN9441_F1-55GHz, 2021-11-24	DAE4 Sn376, 2021-11-22

### Scans Setup

Scan Type	5G Scan
Grid Extents [mm]	60.0 x 60.0
Grid Steps [lambda]	0.25 x 0.25
Sensor Surface [mm]	10.0

### Measurement Results

Date	2022-09-17
Avg. Area [cm <sup>2</sup> ]	4.00
psPDn+ [W/m <sup>2</sup> ]	8.34
psPDtot+ [W/m <sup>2</sup> ]	8.75
H <sub>max</sub> [A/m]	0.223
E <sub>max</sub> [V/m]	89.3
max(Stot) [W/m <sup>2</sup> ]	19.7
Power Drift [dB]	0.00



## Measurement Report for Device

### Device Under Test Properties

Model, Manufacturer	Dimensions [mm]	IMEI	DUT Type
Device,	104.0 x 104.0 x 21.5		Hotspot

### Exposure Conditions

Phantom Section	Position, Test Distance [mm]	Frequency [MHz]	Conversion Factor
5G	FRONT, 10.00	27925.0	1.0

### Hardware Setup

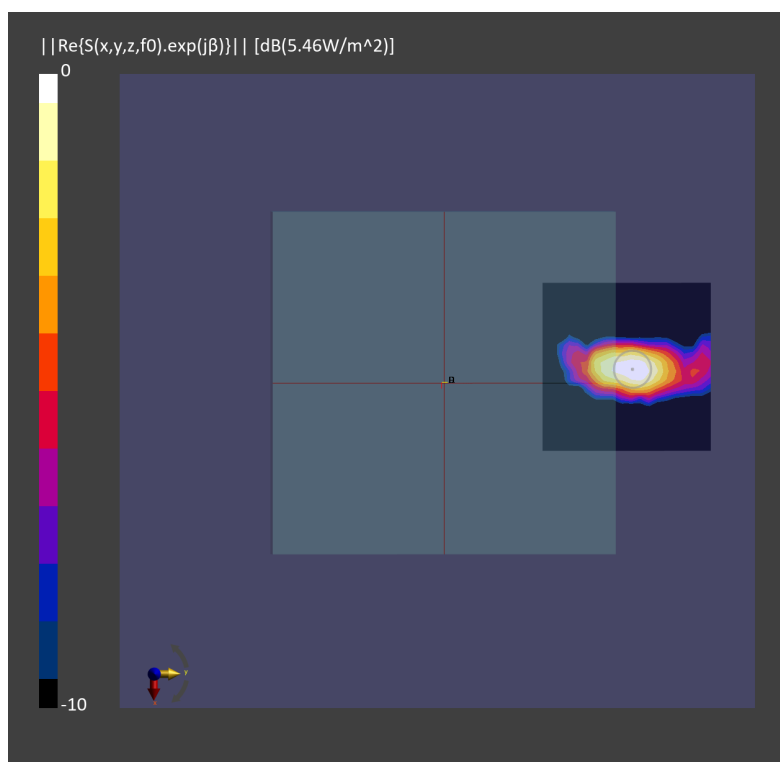
Phantom	Medium	Probe, Calibration Date	DAE, Calibration Date
mmWave - xxxx	Air -	EUmmWV4 - SN9441_F1-55GHz, 2021-11-24	DAE4 Sn376, 2021-11-22

### Scans Setup

Scan Type	5G Scan
Grid Extents [mm]	50.0 x 50.0
Grid Steps [lambda]	0.25 x 0.25
Sensor Surface [mm]	10.0

### Measurement Results

Date	2022-09-17
Avg. Area [cm <sup>2</sup> ]	1.00
psPDn+ [W/m <sup>2</sup> ]	4.31
psPDtot+ [W/m <sup>2</sup> ]	4.38
H <sub>max</sub> [A/m]	0.117
E <sub>max</sub> [V/m]	47.4
max(Stot) [W/m <sup>2</sup> ]	5.46
Power Drift [dB]	-0.02





## Measurement Report for Device

### Device Under Test Properties

Model, Manufacturer	Dimensions [mm]	IMEI	DUT Type
Device,	104.0 x 104.0 x 21.5		Hotspot

### Exposure Conditions

Phantom Section	Position, Test Distance [mm]	Frequency [MHz]	Conversion Factor
5G	BACK, 10.00	27925.0	1.0

### Hardware Setup

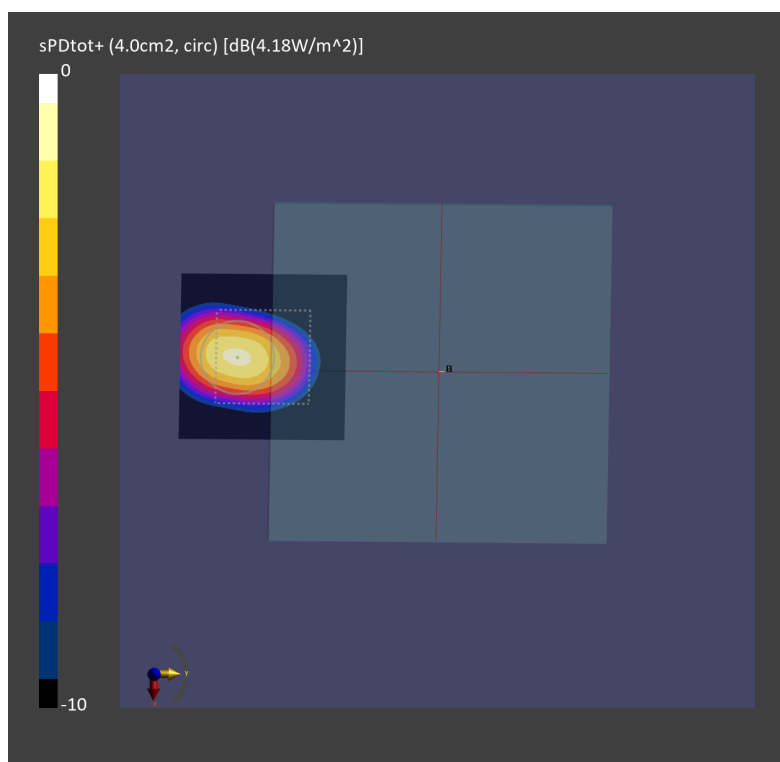
Phantom	Medium	Probe, Calibration Date	DAE, Calibration Date
mmWave - xxxx	Air -	EUmmWV4 - SN9441_F1-55GHz, 2021-11-24	DAE4 Sn376, 2021-11-22

### Scans Setup

Scan Type	5G Scan
Grid Extents [mm]	50.0 x 50.0
Grid Steps [lambda]	0.25 x 0.25
Sensor Surface [mm]	10.0

### Measurement Results

Date	2022-09-17
Avg. Area [cm <sup>2</sup> ]	1.00
psPDn+ [W/m <sup>2</sup> ]	4.02
psPDtot+ [W/m <sup>2</sup> ]	4.18
H <sub>max</sub> [A/m]	0.116
E <sub>max</sub> [V/m]	45.0
max(Stot) [W/m <sup>2</sup> ]	5.14
Power Drift [dB]	0.05



## Measurement Report for Device

### Device Under Test Properties

Model, Manufacturer	Dimensions [mm]	IMEI	DUT Type
Device,	104.0 x 104.0 x 21.5		Hotspot

### Exposure Conditions

Phantom Section	Position, Test Distance [mm]	Frequency [MHz]	Conversion Factor
5G	EDGE RIGHT, 10.00	27925.0	1.0

### Hardware Setup

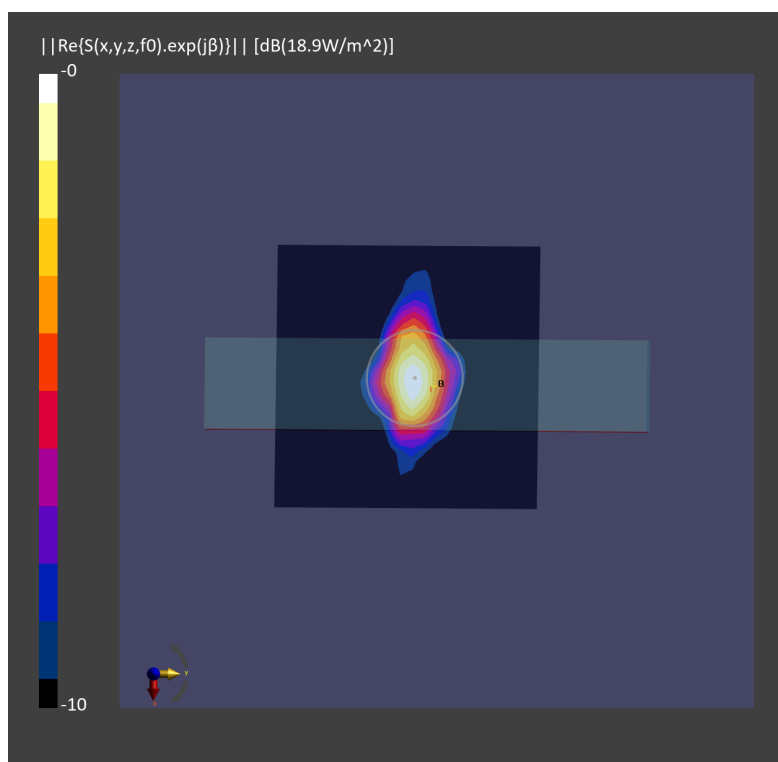
Phantom	Medium	Probe, Calibration Date	DAE, Calibration Date
mmWave - xxxx	Air -	EUmmWV4 - SN9441_F1-55GHz, 2021-11-24	DAE4 Sn376, 2021-11-22

### Scans Setup

Scan Type	5G Scan
Grid Extents [mm]	60.0 x 60.0
Grid Steps [lambda]	0.25 x 0.25
Sensor Surface [mm]	10.0

### Measurement Results

Date	2022-09-18
Avg. Area [cm <sup>2</sup> ]	4.00
psPDn+ [W/m <sup>2</sup> ]	7.49
psPDtot+ [W/m <sup>2</sup> ]	8.28
H <sub>max</sub> [A/m]	0.227
E <sub>max</sub> [V/m]	85.3
max(Stot) [W/m <sup>2</sup> ]	18.9
Power Drift [dB]	0.03



## Measurement Report for Device

### Device Under Test Properties

Model, Manufacturer	Dimensions [mm]	IMEI	DUT Type
Device,	104.0 x 104.0 x 21.5		Hotspot

### Exposure Conditions

Phantom Section	Position, Test Distance [mm]	Frequency [MHz]	Conversion Factor
5G	FRONT, 10.00	27925.0	1.0

### Hardware Setup

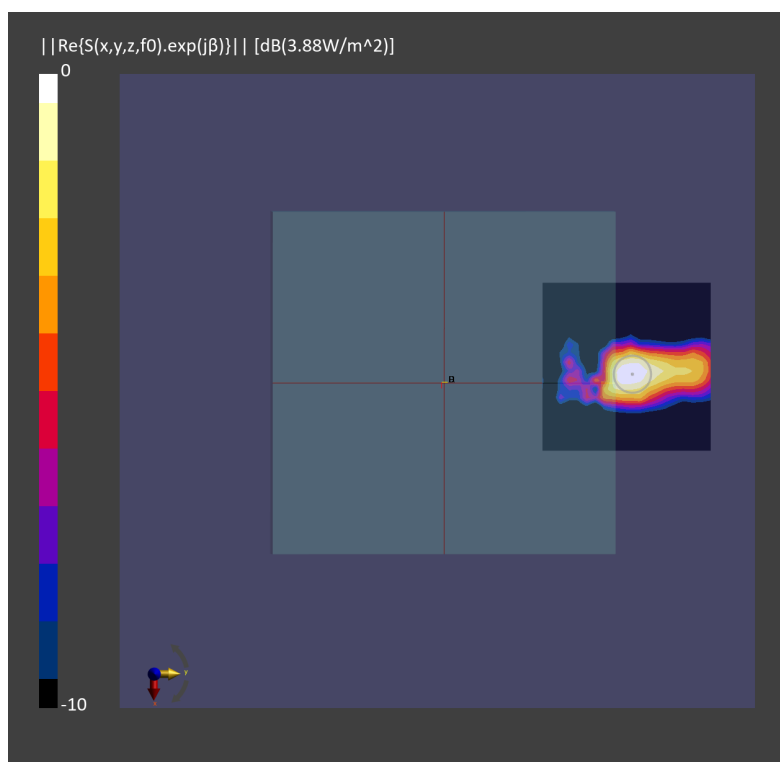
Phantom	Medium	Probe, Calibration Date	DAE, Calibration Date
mmWave - xxxx	Air -	EUmmWV4 - SN9441_F1-55GHz, 2021-11-24	DAE4 Sn376, 2021-11-22

### Scans Setup

Scan Type	5G Scan
Grid Extents [mm]	50.0 x 50.0
Grid Steps [lambda]	0.25 x 0.25
Sensor Surface [mm]	10.0

### Measurement Results

Date	2022-09-17
Avg. Area [cm <sup>2</sup> ]	1.00
psPDn+ [W/m <sup>2</sup> ]	3.10
psPDtot+ [W/m <sup>2</sup> ]	3.14
H <sub>max</sub> [A/m]	0.105
E <sub>max</sub> [V/m]	40.4
max(Stot) [W/m <sup>2</sup> ]	3.88
Power Drift [dB]	0.02



## Measurement Report for Device

### Device Under Test Properties

Model, Manufacturer	Dimensions [mm]	IMEI	DUT Type
Device,	104.0 x 104.0 x 21.5		Hotspot

### Exposure Conditions

Phantom Section	Position, Test Distance [mm]	Frequency [MHz]	Conversion Factor
5G	BACK, 10.00	27925.0	1.0

### Hardware Setup

Phantom	Medium	Probe, Calibration Date	DAE, Calibration Date
mmWave - xxxx	Air -	EUmmWV4 - SN9441_F1-55GHz, 2021-11-24	DAE4 Sn376, 2021-11-22

### Scans Setup

Scan Type	5G Scan
Grid Extents [mm]	50.0 x 50.0
Grid Steps [lambda]	0.25 x 0.25
Sensor Surface [mm]	10.0

### Measurement Results

Date	2022-09-17
Avg. Area [cm <sup>2</sup> ]	1.00
psPDn+ [W/m <sup>2</sup> ]	3.45
psPDtot+ [W/m <sup>2</sup> ]	3.67
H <sub>max</sub> [A/m]	0.114
E <sub>max</sub> [V/m]	44.4
max(Stot) [W/m <sup>2</sup> ]	4.46
Power Drift [dB]	-0.00

