

Measurement Report for Device

Device Under Test Properties

Model, Manufacturer	Dimensions [mm]	IMEI	DUT Type
Device,	100.0 x 100.0 x 100.0		Verification Source

Exposure Conditions

Phantom Section	Position, Test Distance [mm]	Frequency [MHz]	Conversion Factor1.0
5G	FRONT, 5.55	30000.0	

Hardware Setup

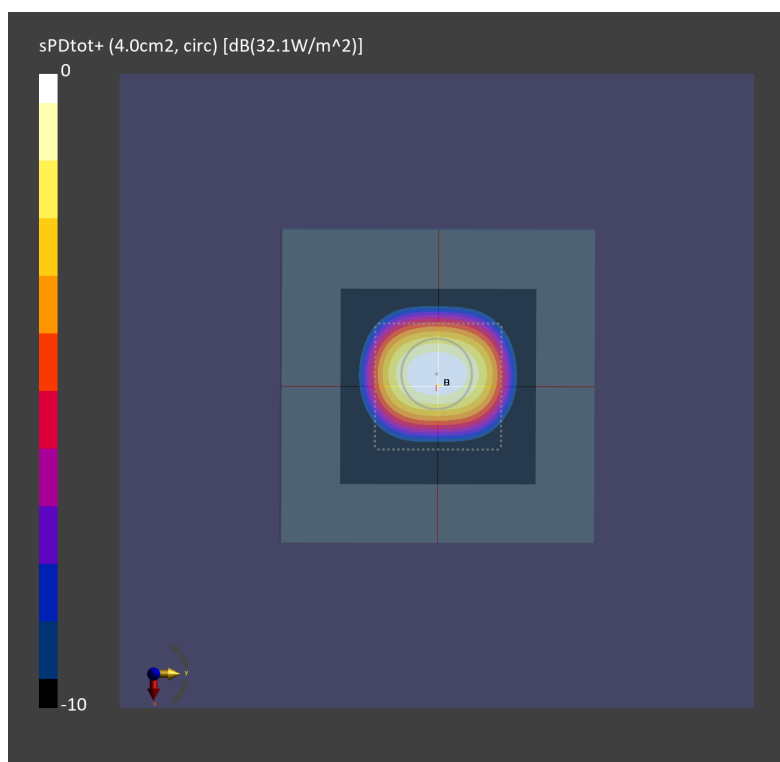
Phantom	Medium	Probe, Calibration Date	DAE, Calibration Date
mmWave - xxxx	Air -	EUmmWV4 - SN9441_F1-55GHz, 2021-11-24	DAE4 Sn376, 2021-11-22

Scans Setup

Scan Type	5G Scan
Grid Extents [mm]	60.0 x 60.0
Grid Steps [lambda]	0.25 x 0.25
Sensor Surface [mm]	5.55

Measurement Results

Date	2022-09-17
Avg. Area [cm ²]	4.00
psPDn+ [W/m ²]	31.5
psPDtot+ [W/m ²]	32.1
H _{max} [A/m]	0.347
E _{max} [V/m]	131
max(Stot) [W/m ²]	43.1
Power Drift [dB]	0.0



Measurement Report for Device

Device Under Test Properties

Model, Manufacturer	Dimensions [mm]	IMEI	DUT Type
Device,	100.0 x 100.0 x 100.0		Verification Source

Exposure Conditions

Phantom Section	Position, Test Distance [mm]	Frequency [MHz]	Conversion Factor1.0
5G	FRONT, 5.55	30000.0	

Hardware Setup

Phantom	Medium	Probe, Calibration Date	DAE, Calibration Date
mmWave - xxxx	Air -	EUmmWV4 - SN9441_F1-55GHz, 2021-11-24	DAE4 Sn376, 2021-11-22

Scans Setup

Scan Type	5G Scan
Grid Extents [mm]	60.0 x 60.0
Grid Steps [lambda]	0.25 x 0.25
Sensor Surface [mm]	5.55

Measurement Results

Date	2022-10-01
Avg. Area [cm ²]	4.00
psPDn+ [W/m ²]	31.9
psPDtot+ [W/m ²]	32.2
H _{max} [A/m]	0.345
E _{max} [V/m]	131
max(Stot) [W/m ²]	44.2
Power Drift [dB]	0.1

