

System Check_Head_3500MHz

Communication System: ; Frequency: 3500.0

Medium: HSL_3500_211220. Medium parameters used: $f= 3500.0$ MHz; $\sigma= 3.05$ S/m; $\epsilon_r = 37.8$

Ambient Temperature: 23.5°C; Liquid Temperature: 22.5°C

DASY6 Configuration:

- Probe: EX3DV4 - SN7590; ConvF(7.23, 7.23, 7.23); Calibrated: 2021-03-25
- Sensor-Surface: 1.4 mm
- Electronics: DAE4 Sn1424; Calibrated: 2021-01-19
- Phantom: Twin-SAM V4.0 (30deg probe tilt); Serial: 1489; Section: Flat
- Measurement Software: cDASY6 V6.6.0.13926
- UID: CW, 0--
- MAIA: Area Scan: N/A; Zoom Scan: N/A

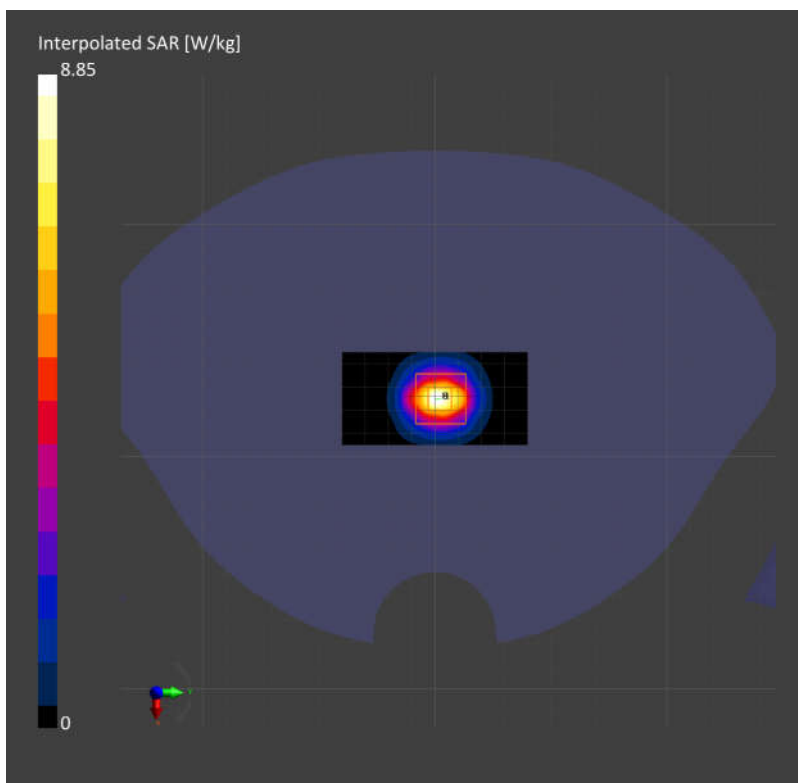
Area Scan (40.0 mm x 80.0 mm): Measurement Grid: 10.0 mm x 10.0 mm

SAR (1g) = 6.33 W/kg; SAR (10g) = 2.47 W/kg;

Zoom Scan (28.0 mm x 28.0 mm x 28.0 mm): Measurement Grid: 5.0 mm x 5.0 mm x 1.4 mm

Power Drift = -0.07 dB

SAR (1g) = 6.41 W/kg; SAR (10g) = 2.49 W/kg;



Measurement Report for Device
Device Under Test Properties

Model, Manufacturer	Dimensions [mm]	IMEI	DUT Type
Device,	100.0 x 100.0 x 100.0		5G Verification Source

Exposure Conditions

Phantom Section	Position, Test Distance [mm]	Frequency [MHz]	Conversion Factor
5G	FRONT, 5.55	30000.0	1.0

Hardware Setup

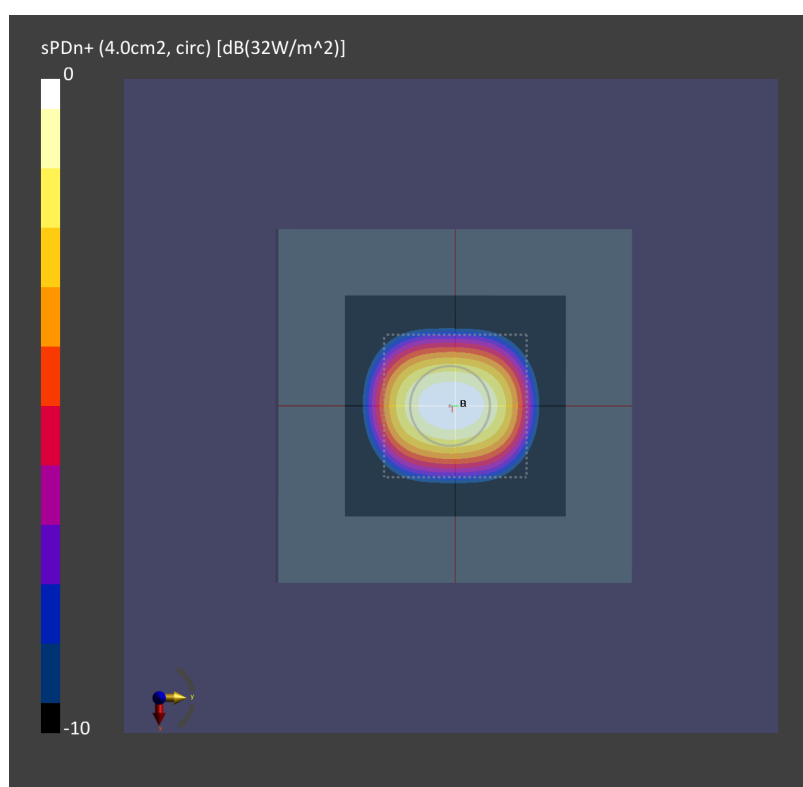
Phantom	Medium	Probe, Calibration Date	DAE, Calibration Date
mmWave - 1044	Air -	EUmmWV3 - SN9424_F1-55GHz, 2021-03-23	DAE4 Sn699, 2021-02-16

Scans Setup

Scan Type	5G Scan
Grid Extents [mm]	60.0 x 60.0
Grid Steps [lambda]	0.25 x 0.25
Sensor Surface [mm]	5.55

Measurement Results

Date	2021-11-08, 07:44
Avg. Area [cm ²]	4.00
psPDn+ [W/m ²]	31.6
psPDtot+ [W/m ²]	32.0
H _{max} [A/m]	0.349
E _{max} [V/m]	131
max(Stot) [W/m ²]	44.6
Power Drift [dB]	0.03



Measurement Report for Device
Device Under Test Properties

Model, Manufacturer	Dimensions [mm]	IMEI	DUT Type
Device,	100.0 x 100.0 x 100.0		5G Verification Source

Exposure Conditions

Phantom Section	Position, Test Distance [mm]	Frequency [MHz]	Conversion Factor
5G	FRONT, 5.55	30000.0	1.0

Hardware Setup

Phantom	Medium	Probe, Calibration Date	DAE, Calibration Date
mmWave - xxxx	Air -	EUmmWV4 - SN9441_F1-55GHz, 2021-11-24	DAE4 Sn778, 2021-05-21

Scans Setup

Scan Type	5G Scan
Grid Extents [mm]	60.0 x 60.0
Grid Steps [lambda]	0.25 x 0.25
Sensor Surface [mm]	5.55

Measurement Results

Date	2021-12-18, 11:31
Avg. Area [cm ²]	4.00
psPDn+ [W/m ²]	31.5
psPDtot+ [W/m ²]	32.1
H _{max} [A/m]	0.347
E _{max} [V/m]	131
max(S _{tot}) [W/m ²]	43.1
Power Drift [dB]	0.06

