

Test Laboratory: Sporton International Inc.

#### Device Under Test Properties

Manufacturer	Dimensions [mm]	IMEI	DUT Type
	105.0 x 105.0 x 15.0		Hotspot

#### Exposure Conditions

Phantom Section	Position, Test Distance [mm]	Frequency [MHz]	Conversion Factor
5G	EDGE RIGHT, 10.00	38850.0	1.0

#### Hardware Setup

Phantom	Medium	Probe, Calibration Date	DAE, Calibration Date
mmWave - xxxx	Air -	EUmmWV4 - SN9461_F1-78GHz, 2019-11-05	DAE4 Sn1424, 2020-01-24

#### Scans Setup

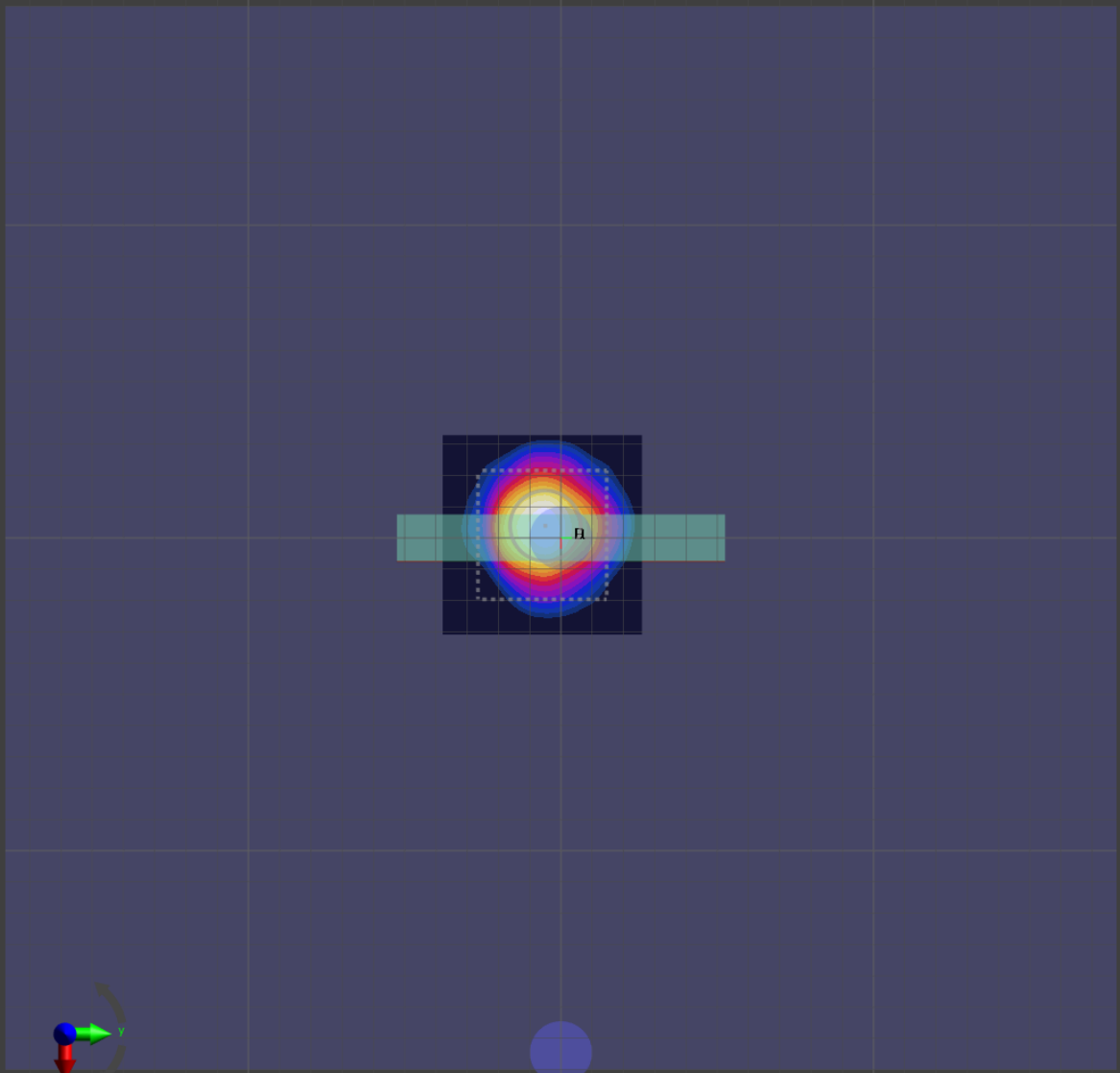
Grid Extents [mm]	60.0 x 60.0
Grid Steps [lambda]	0.25 x 0.25
Sensor Surface [mm]	10.0

#### Measurement Results

Date	2020-05-21, 02:46
Avg. Area [cm <sup>2</sup> ]	4.00
S <sub>avg inc</sub> [W/m <sup>2</sup> ]	4.93
S <sub>avg tot</sub> [W/m <sup>2</sup> ]	5.24
S <sub>peak</sub> [W/m <sup>2</sup> ]	13.9
E <sub>peak</sub> [V/m]	72.1
H <sub>peak</sub> [A/m]	0.198
Power Drift [dB]	-0.04

Averaged [4.0 cm<sup>2</sup>] |Re{S}|(x,y,z,f0) [dB(5.24W/m<sup>2</sup>)]

0



-10



Test Laboratory: Sporton International Inc.

#### Device Under Test Properties

Manufacturer	Dimensions [mm]	IMEI	DUT Type
	105.0 x 105.0 x 15.0		Hotspot

#### Exposure Conditions

Phantom Section	Position, Test Distance [mm]	Frequency [MHz]	Conversion Factor
5G	EDGE RIGHT, 10.00	38850.0	1.0

#### Hardware Setup

Phantom	Medium	Probe, Calibration Date	DAE, Calibration Date
mmWave - xxxx	Air -	EUmmWV4 - SN9461_F1-78GHz, 2019-11-05	DAE4 Sn1424, 2020-01-24

#### Scans Setup

Grid Extents [mm]	60.0 x 60.0
Grid Steps [lambda]	0.5 x 0.5
Sensor Surface [mm]	10.0

#### Measurement Results

Date	2020-05-21, 14:50
Avg. Area [cm <sup>2</sup> ]	4.00
S <sub>avg inc</sub> [W/m <sup>2</sup> ]	4.17
S <sub>avg tot</sub> [W/m <sup>2</sup> ]	4.58
S <sub>peak</sub> [W/m <sup>2</sup> ]	9.45
E <sub>peak</sub> [V/m]	61.6
H <sub>peak</sub> [A/m]	0.154
Power Drift [dB]	-0.10

Averaged [4.0 cm<sup>2</sup>] |Re{S}|(x,y,z,f0) [dB(4.58W/m<sup>2</sup>)]

0



-10

