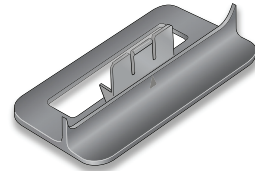


ADT Pulse Gateway PGZNG1

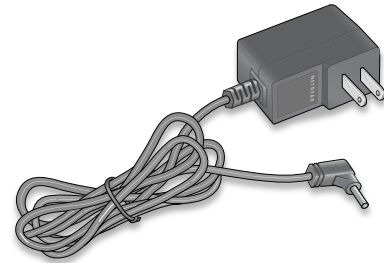
Package Contents



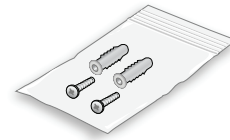
Gateway



Stand



Power adapter



Wall mount kit

Connecting the Gateway

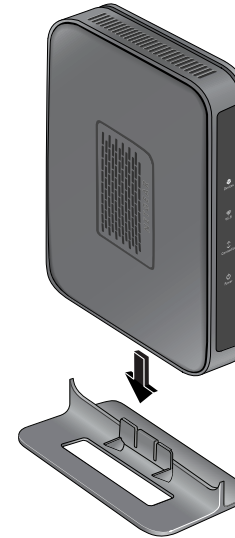
1. Verify the package contents.
2. Decide where to place the Gateway.

Locate the broadband router on the premises. Then identify a relatively central location within the premise to place the Gateway for optimal Wi-Fi coverage, and where there is an AC outlet.

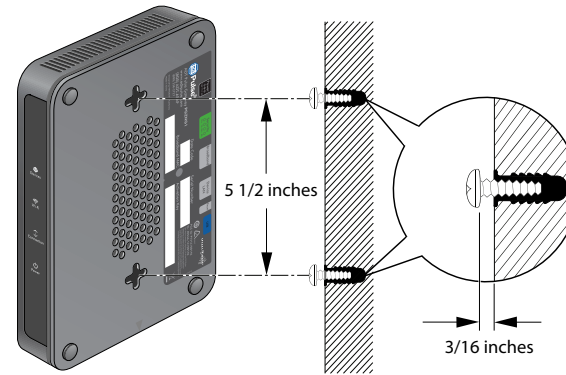
3. Place the Gateway either flat, or prepare the Gateway for vertical installation either on a flat surface or mounted to a wall.



(a) Flat mount

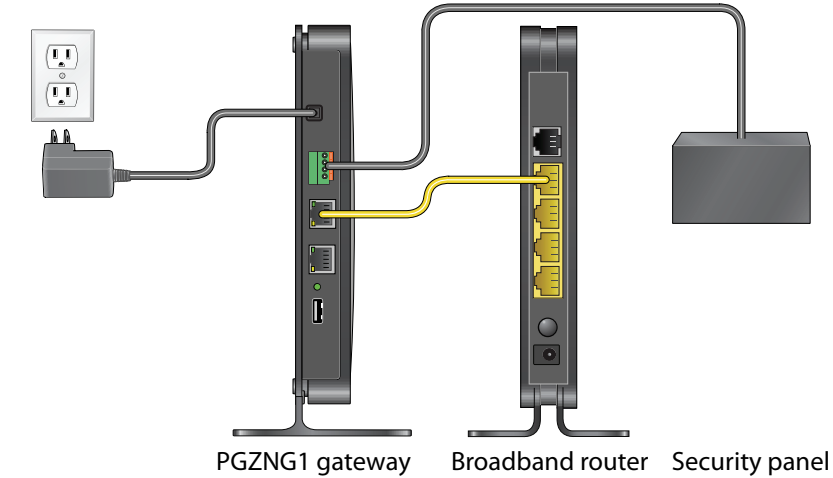



(b) Vertical mount



(c) Wall mount

4. Connect and verify all of the cables.







- a. Connect an Ethernet cable from one of the broadband open ports of the router to the Broadband Ethernet port of the Gateway.
 - b. Connect a 4-wire cable from the security panel to the Gateway's Security connector.
 - c. Verify that all wiring and connections are done correctly.
5. Start up the Gateway.
 - a. Plug the power cord into the Gateway, and then plug the power adapter into an AC outlet.
 - b. Wait until the Connection LED  on the Gateway becomes solid green (approximately 5 minutes, during which the Gateway establishes remote connectivity with ADT Pulse).
 6. Begin the activation process.

Go to <https://www.adtpulse.com/activation>

Warning: Do not stack equipment, or place equipment in tight spaces, in drawers, or on carpets. Make sure that your equipment is surrounded by at least 2 inches (5 centimeters) of air space.

Troubleshooting

Use the LEDs on the front of the unit to determine its status and to troubleshoot its operation.

LED	Description
 Devices	<ul style="list-style-type: none">• Solid green: Unit is able to communicate with all devices.• Blinking green: All devices are OK, and unit is communicating with a device.• Solid orange: Unit is unable to communicate with at least one device that has been previously installed and working.• Blinking orange: Unit is communicating with a device, but is having trouble communicating with other devices.• Blinking red: Unit is unable to communicate with the security panel.• Solid red: Unit is unable to communicate with the security panel, but device traffic is occurring.• Off: Unit is still starting up.
 Wi-Fi	<ul style="list-style-type: none">• Solid green: Unit is linked with Wi-Fi clients.• Blinking green: Data is being transmitted or received over Wi-Fi.• Off: Wi-Fi is disabled.
 Connection	<ul style="list-style-type: none">• Solid green: Unit is connected for remote access.• Pulsing green: Unit is establishing a connection for remote access.• Blinking green: Data is being exchanged with remote access.• Solid orange: Unit is ready for activation.• Pulsing orange: Unit is trying to reconnect for remote access.• Solid red: Unit is unable to communicate with remote access.• Off: Unit is still starting up.
 Power	<ul style="list-style-type: none">• Solid green: Unit is powered on.• Blinking green: Firmware upgrade is in progress.• Solid red: POST (Power On Self Test) failure or device malfunction.• Off: Unit is powered off.

For the complete DoC, go to the NETGEAR EU Declarations of Conformity website at http://support.netgear.com/app/answers/detail/a_id/11621/.

For GNU General Public License (GPL) related information, go to http://support.netgear.com/app/answers/detail/a_id/2649



201-15405-01



June 2012

FCC Requirements for Operation in the United States

FCC Information to User

This product does not contain any user serviceable components and is to be used with approved antennas only. Any product changes or modifications will invalidate all applicable regulatory certifications and approvals.

FCC Guidelines for Human Exposure

This equipment complies with FCC radiation exposure limits set forth for an uncontrolled environment. This equipment should be installed and operated with minimum distance of 20 cm between the radiator and your body.

This transmitter must not be co-located or operating in conjunction with any other antenna or transmitter.

FCC Declaration of Conformity

We, NETGEAR, Inc., 350 East Plumeria Drive, San Jose, CA 95134, declare under our sole responsibility that the ADT Pulse Gateway PGZNG1 complies with Part 15 Subpart B of FCC CFR47 Rules. Operation is subject to the following two conditions:

- This device may not cause harmful interference, and
- This device must accept any interference received, including interference that may cause undesired operation.

FCC Radio Frequency Interference Warnings & Instructions

This equipment has been tested and found to comply with the limits for a Class B digital device, pursuant to Part 15 of the FCC Rules. These limits are designed to provide reasonable protection against harmful interference in a residential installation. This equipment uses and can radiate radio frequency energy and, if not installed and used in accordance with the instructions, may cause harmful interference to radio communications. However, there is no guarantee that interference will not occur in a particular installation. If this equipment does cause harmful interference to radio or television reception, which can be determined by turning the equipment off and on, the user is encouraged to try to correct the interference by one or more of the following methods:

- Reorient or relocate the receiving antenna.
- Increase the separation between the equipment and the receiver.
- Connect the equipment into an electrical outlet on a circuit different from that which the radio receiver is connected.
- Consult the dealer or an experienced radio/TV technician for help.

FCC Caution

- Any changes or modifications not expressly approved by the party responsible for compliance could void the user's authority to operate this equipment.
- This device complies with Part 15 of the FCC Rules. Operation is subject to the following two conditions: (1) This device may not cause harmful interference, and (2)

this device must accept any interference received, including interference that may cause undesired operation.

- For product available in the USA market, only channel 1~11 can be operated. Selection of other channels is not possible.
- This device and its antenna(s) must not be co-located or operation in conjunction with any other antenna or transmitter.

Canadian Department of Communications Radio Interference Regulations

This digital apparatus (ADT Pulse Gateway PGZNG1) does not exceed the Class B limits for radio-noise emissions from digital apparatus as set out in the Radio Interference Regulations of the Canadian Department of Communications.

This Class [B] digital apparatus complies with Canadian ICES-003.

Cet appareil numérique de la classe [B] est conforme à la norme NMB-003 du Canada

Industry Canada

This device complies with RSS-210 of the Industry Canada Rules. Operation is subject to the following two conditions: (1) This device may not cause harmful interference, and (2) this device must accept any interference received, including interference that may cause undesired operation.

IMPORTANT NOTE: Radiation Exposure Statement:

This equipment complies with IC radiation exposure limits set forth for an uncontrolled environment. This equipment should be installed and operated with minimum distance 20cm between the radiator & your body.

Caution:

Ce dispositif est conforme à la norme CNR-210 d'Industrie Canada applicable aux appareils radio exempts de licence. Son fonctionnement est sujet aux deux conditions suivantes: (1) le dispositif ne doit pas produire de brouillage préjudiciable, et (2) ce dispositif doit accepter tout brouillage reçu, y compris un brouillage susceptible de provoquer un fonctionnement indésirable.

NOTE IMPORTANTE: Déclaration d'exposition aux radiations:

Cet équipement est conforme aux limites d'exposition aux rayonnements IC établies pour un environnement non contrôlé. Cet équipement doit être installé et utilisé avec un minimum de 20 cm de distance entre la source de rayonnement et votre corps.

© 2012 by NETGEAR, Inc. All rights reserved. NETGEAR and the NETGEAR logo are registered trademarks of NETGEAR, Inc. in the United States and/or other countries. Other brand and product names are trademarks or registered trademarks of their respective holders. Information is subject to change without notice.