

KIRK 5020 1.9 GHz handset user guide



Contents

| | |
|-----------------------|----|
| Construction | 3 |
| Battery information | 4 |
| Symbol overview | 5 |
| Menu structure | 6 |
| Safety instructions | 12 |
| Technical Information | 23 |
| Battery information | 24 |
| Product Information | 25 |

Headset connector



Volume up/down

Turn On/Off and
Soft key

Soft key

Redial

On/Off Hook

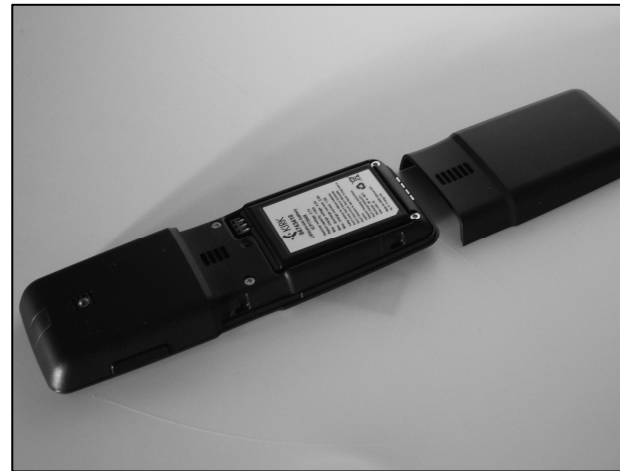
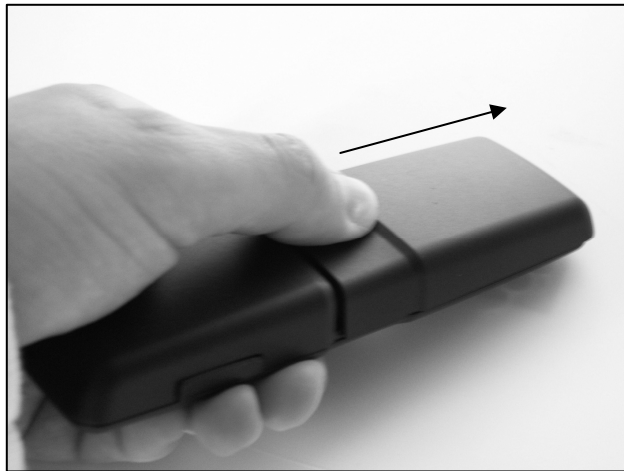
Navigation key

Keyboard lock
(Menu + *)

Battery information

To remove the battery cover slide the back cover towards the bottom of the phone. When the back cover is released, take it off the phone.

Please note: The product label, including the CE logo, can be found in the battery compartment.



Symbol overview



Battery low



Silent



Signal low



Key lock

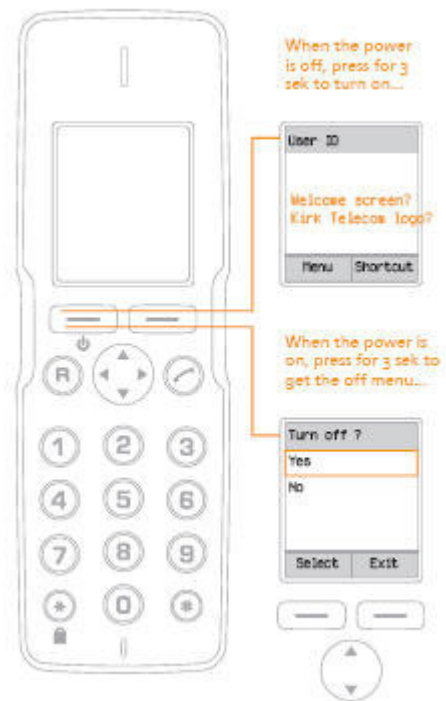


Headset

- The battery low symbol will appear when voltage is low
- The silent symbol will appear when all sounds are disabled. Use soft key xx to disable all sounds
- The signal low symbol indicates that the handset soon will be out of coverage
- The Key lock symbol indicates that the entire key pad is locked. To lock and unlock key pad press Menu on soft key followed by *
- The headset symbol will appear when a headset is connected

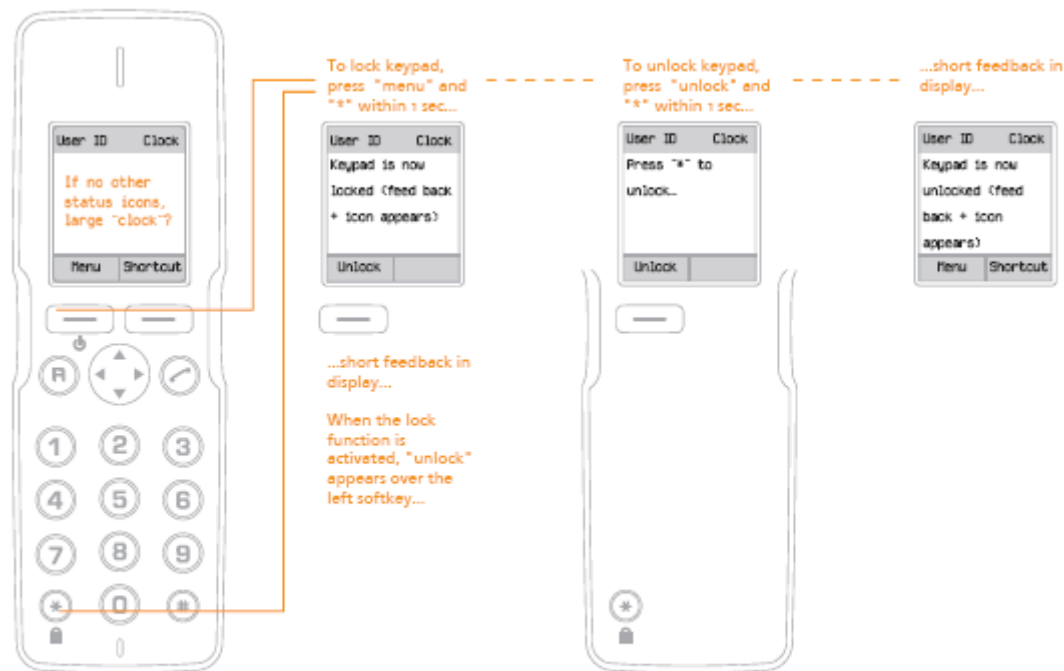
Menu structure

Turning handset On and Off

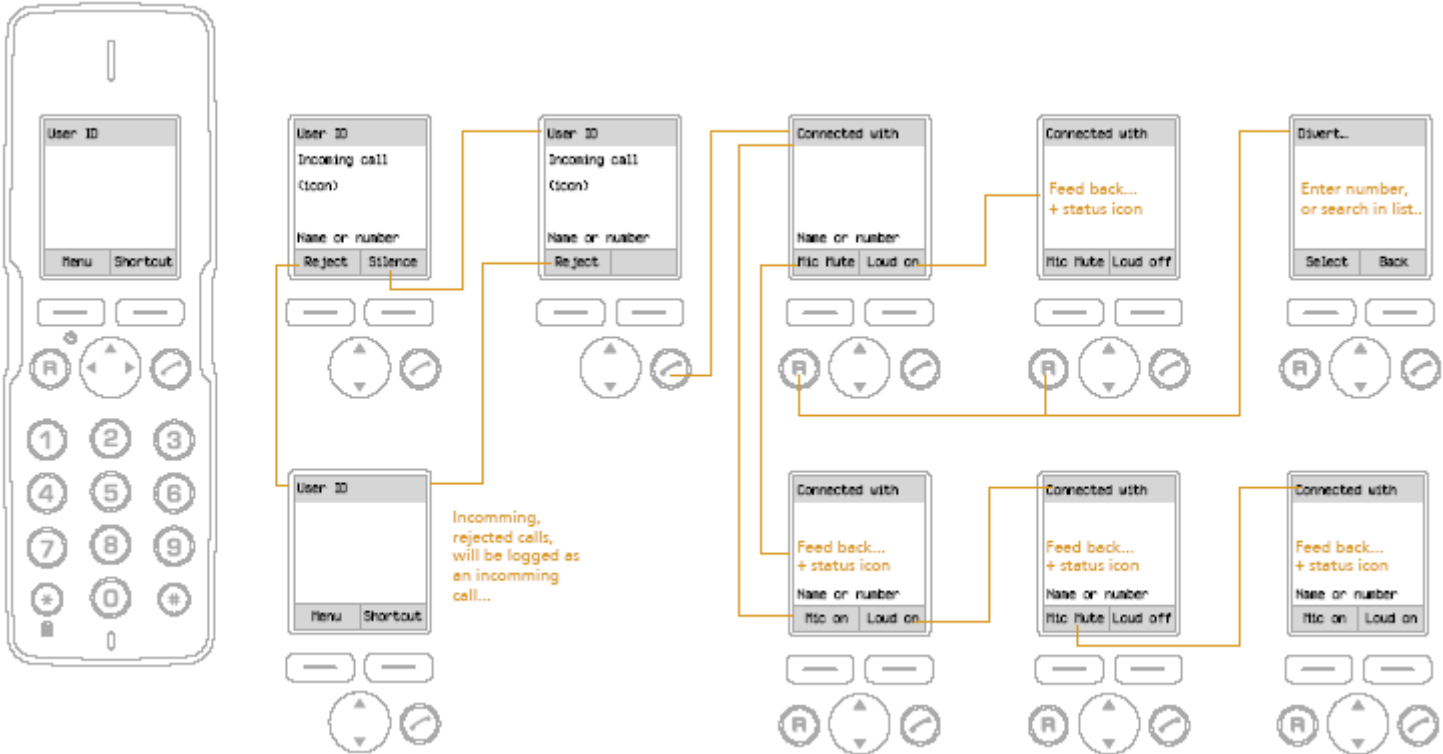


Menu structure

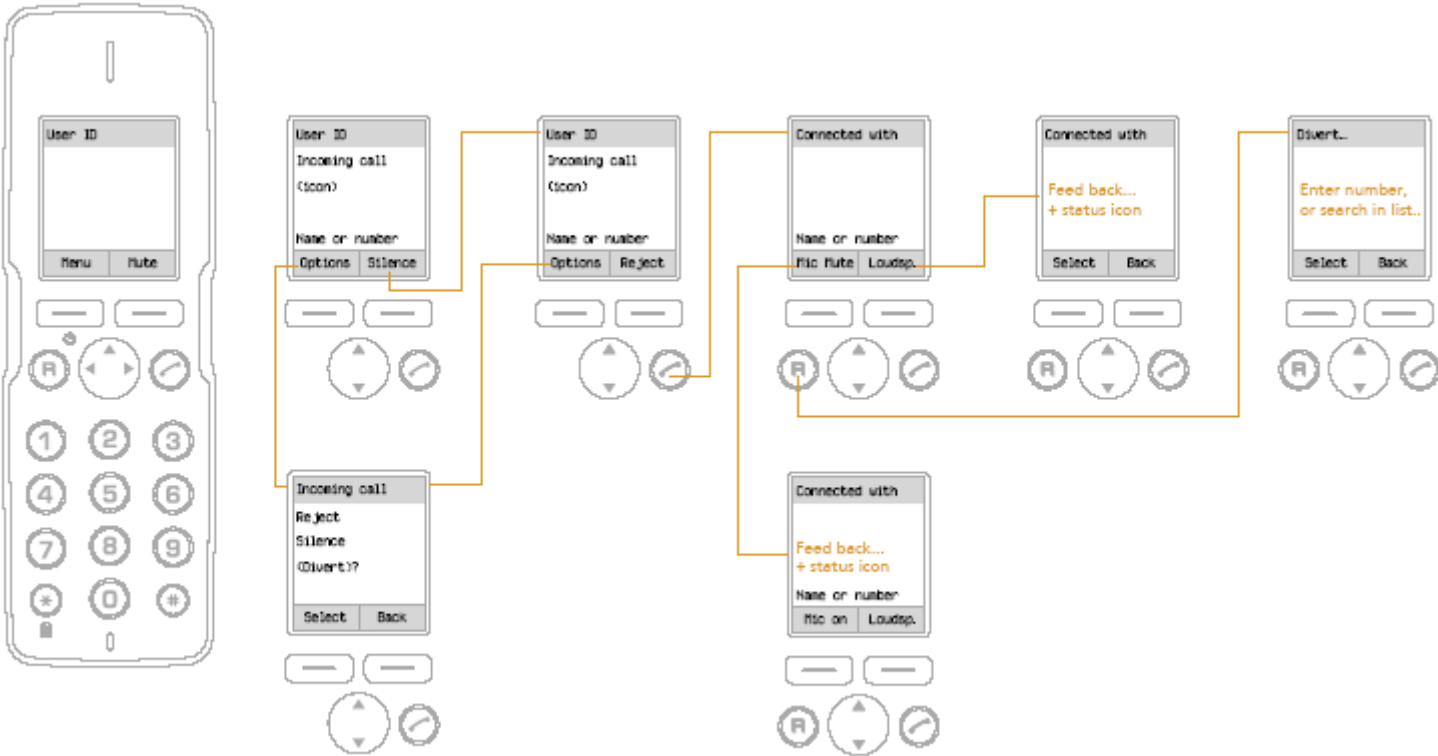
Lock and unlock handset



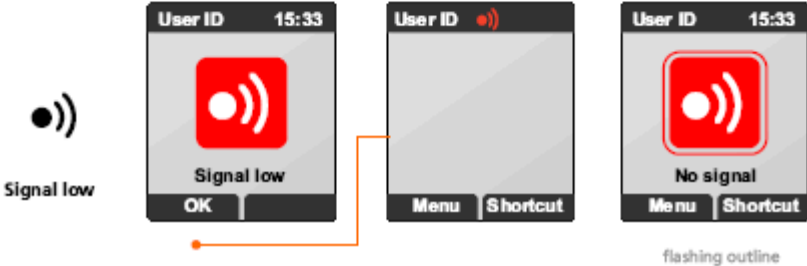
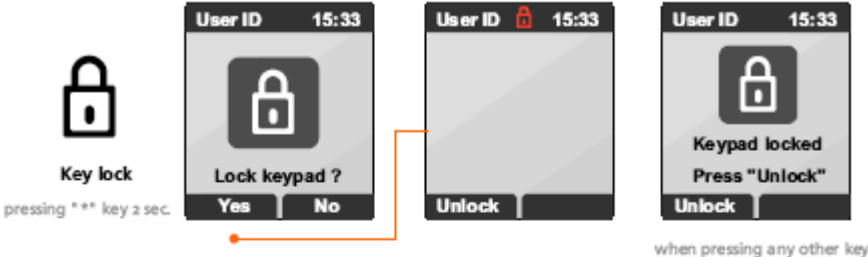
Menu structure



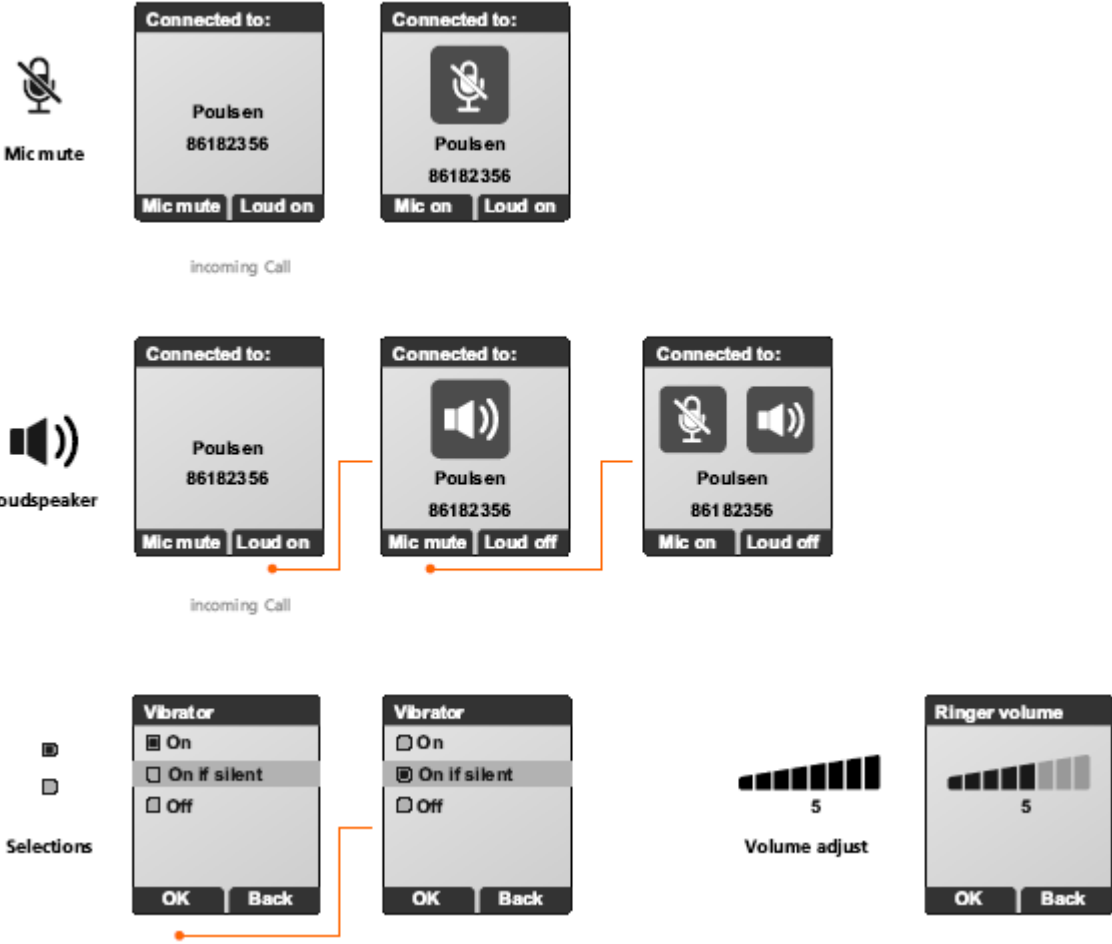
Menu structure



Menu structure



Menu structure



Safety instructions

Before using your telephone equipment, you should always follow basic safety instruction to reduce the risk of fire, electrical shock and injury to persons, and damage to property.

- 1 Read and understand all instructions
- 2 Follow all warnings and instructions including those marked on the product
- 3 Unplug this product before cleaning. Do not use liquid cleaners or aerosol cleaners. Use damp cloth for cleaning
- 4 Do not install the telephone equipment in the bathroom or near a wash bowl, kitchen sink, or laundry tub, in a wet basement, or near a swimming pool
- 5 Slots or openings in the cabinet back and bottom of the equipment are provided for ventilation to protect it from over-heating. These openings must not be blocked or covered.
- 6 The product should be operated only from the type of power source indicated on the instructions. If you are not sure of the type of power supply, consult your dealer or local power company.
- 7 Do not overload wall outlets and extension cords as this can result in fire or electrical shock.
- 8 Never push objects of any kind into this product through cabinet slots as they may touch dangerous voltage points or short out parts that could result in fire, electrical shock, or injury. Never spill liquid of any kind into this product.

- 9 To reduce the risk of electrical shock or burns, do not disassemble this product. Opening or removing covers may expose you to dangerous voltages, dangerous electrical current, or other risks. Incorrect reassemble can cause electrical shock when the appliance is subsequently used. If the product need repair, consult your dealer.
- 10 Refer servicing to qualified service personnel under the following conditions:
 - AQ If liquid has been spilled into the product
 - BQ If the product has been exposed to rain or water
 - CQ If the product does not operate normally when following the operating instructions in the manual. Adjust only those controls that are covered by the operation instructions. Improper adjustment of other controls may result in damage and will often require extensive work by qualified service personnel to restore the product to normal operation.
 - DQ If the product has been dropped or cabinet has been damaged
 - EQ If the product exhibits a distinct change in performance
- 11 Avoid using telephone during an electrical storm. There may be a risk of electrical shock from lightning
- 12 Do not use the telephone to report a gas leak in the vicinity of the leak

- 13 Do not place the unit near microwave ovens, radio equipment, or non-ground connected televisions. These appliances may cause electrical interference to the base or handset
- 14 The unit must be installed on a hard, plane surface and connected to a functional 120 volt AC power net adapter and plug the adapter into the power outlet
- 15 The system will not operate in the event of a blackout. Please keep a backup phone for emergencies

Intrinsic safety

Do not install the unit in conditions where there is a danger of electrically ignited explosions.

Exposure to sunlight, heat and moisture

Do not expose the unit to direct sunlight for long periods. Keep away from excessive heat and moisture.

Spare parts and accessories

- Use only approved spare parts and accessories. The operation of non-approved parts cannot be guaranteed and may even cause damage.

Power failure

In the event of a power failure, you cannot use the wireless solution to make or receive calls

NOTICES

NOTICE:

- Before installing this equipment, users should ensure that it is permissible to be connected to the facilities of the local telecommunications company. The equipment must also be installed using an acceptable method of connection. The customer should be aware that compliance with the above conditions may not prevent degradation of service in some situations.
- Repairs to certified equipment should be coordinated by a representative designated by the supplier. Any repairs or alterations made by the user to this equipment, or equipment malfunctions, may give the telecommunications company cause to request the user to disconnect the equipment.

- Users should ensure for their own protection that the electrical ground connections of the power utility, telephone lines and internal metallic water pipe system, if present, are connected together. This precaution may be particularly important in rural areas.
- CAUTIONS: Users should not attempt to make such connections themselves, but should contact the appropriate electric inspection authority, or electrician, as appropriate.
- If your telephone equipment causes harm to the telephone network, the telephone operator may ask you to disconnect the system from the line until the problem has been corrected or they may discontinue your service temporarily. If possible, they will notify you in advance, But if advance notice is not practical, you should be notified as soon as possible. You will be informed of your right to file a complaint with the FCC.
- Your telephone operator may make changes in its facilities, equipment, operations, or procedures that could affect the proper functioning of your telephone system, If they do and it is possible, you will be notified in advance to give you an opportunity to maintain uninterrupted telephone service. If you experience trouble with this telephone system, disconnect it from the network until the problem has been corrected or until you are sure that the equipment is not malfunctioning.

Note:

- This equipment has been tested and found to comply with the limits for a class B digital device, pursuant to Part 15 of the FCC Rules. These limits are designed to provide reasonable protection against harmful interference in a residential installation. This equipment generates, uses and can radiate radio frequency energy and, if not installed and used in accordance with the instructions, may cause harmful interference to radio communications. However, there is no guarantee that interference will not occur in a particular installation. If this equipment does cause harmful interference to radio or television reception, which can be determined by turning the equipment off and on, the user is encouraged to try to correct the interference by one or more of the following measures:
 - Reorient or relocate the receiving antenna.
 - Increase the separation between the equipment and receiver.
 - Connect the equipment into an outlet on a circuit different from that to which the receiver is connected.
 - Consult the dealer or an experienced radio/TV technician for help.

FCC Note:

- This device complies with part 15 of the FCC rules. Operation is subject to the following two conditions:
- (1) This device may not cause harmful interference, and (2) this device must accept any interference received, including interference that may cause undesired operation.

IC Note:

- Operation is subject to the following two conditions: (1) This device may not cause interference, and (2) this device must accept any interference, including interference that may cause undesired operation of the device.
- The term “IC:” before the certification/registration number only signifies that the Industry Canada technical specifications were met.

CAUTION:

- Privacy of communication may not be ensured when using this phone.
- Power Outage: In the event of a power outage, your cordless telephone will not operate. The cordless telephone requires electricity for operation. You should have a telephone which does not require electricity available for use during power outages.
- Information to user: The users manual or instruction manual for an intentional or unintentional radiator shall caution the user that changes or modifications not expressly approved by the party responsible for compliance could void the user's authority to operate the equipment.

LIMITED WARRANTY

- This limited, non-transferable warranty is provided to the original purchaser. The product is warranted to be free from defects in materials and workmanship under normal installation, use and service for a period of one (1) year from the date of purchase as shown on the purchaser's receipt.
- Our obligation under this warranty is limited to repair or replacement (at our option) of the product or any part(s) which are defective provided that the product is returned to the original place of purchase or an authorized service location during the warranty period. Products returned must be accompanied by a copy of the purchase receipt. In the absence of a purchase receipt, the warranty period shall be one (1) year from the date of manufacture.

- Repair or replacement of the product is your sole and exclusive remedy.
- If the product is repaired, reconditioned component parts or materials may be used. If the product is replaced, we may replace it with a new or reconditioned product of the same or similar design. The repaired product will be warranted for either (a) 90 days or (b) the remainder of the original one (1) year warranty period, whichever is longer.
- This warranty does not apply to the defects outside of our control, including but not limited to acts of God, fire, flood and damage while in transit to service facility. We do not warranty that the product will be compatible with any telephone equipment, systems or party lines.
- This warranty shall be void if the product is damaged as a result of defacement, misuse, abuse, neglect, accident, destruction or alteration of the serial number, improper electrical voltages or currents, repair, alteration or maintenance by any person or party other than our authorized service facility, or any violation of instructions furnished by us.
- This warranty is also void if this product is removed from the country in which it was purchased by the original purchaser, if it is used in a country in which it is not registered for use, or if it is used in a country for which it was not designed. Due to variations in telephone systems and communications laws, this product may be illegal for use in some countries.

- We assume no responsibilities for damages or penalties incurred resulting from the use of this product in a manner or location other than that for which it was intended.
- THIS LIMITED WARRANTY IS IN LIEU OF ALL OTHER WARRANTIES EXPRESS OR IMPLIED. ANY IMPLIED WARRANTIES INCLUDING BUT NOT LIMITED TO THE IMPLIED WARRANTIES OF MERCHANTABILITY AND FITNESS FOR A PARTICULAR PURPOSE, SHALL BE LIMITED TO THE DURATION OF THIS WRITTEN LIMITED WARRANTY. WE DISCLAIM ANY LIABILITY FOR DAMAGES FOR LOSS OF USE OF THE PRODUCTS, LOSS OF TIME, INCONVENIENCE, INJURY TO ANY PERSON, OR DAMAGE TO PROPERTY CAUSED BY THE PRODUCT, LOSS OF REVENUE OR PROFIT OR DAMAGES FOR ANY FAILURE TO PERFORM. IN NO EVENT SHALL WE BE LIABLE FOR ANY SPECIAL, INCIDENTAL, PUNITIVE OR CONSEQUENTIAL DAMAGES EVEN IF WE ARE ADVISED OF THE POSSIBILITY OF SUCH DAMAGES.
- Some states do not allow limitations on how long an implied warranty lasts, so the above limitations may not apply to you.
- This warranty is the sole and exclusive warranty provided for the product. There are no other express warranties. This warranty gives you specific legal rights, and you may also have other rights, which vary from state to state

Technical Information

Approvals

- Acoustics: TBR 10
- Electrical/DECT RF: EN 301 406
- Access profile: TBR 22 (GAP)
- EMC: EN 301 489 -1/-6
- Safety: EN 60950-1:2001 + A11:2004 + Corrigendum:2004
- EN 50360:2001

Size and weight

- Size: 145 x 48 x 19 mm
- Weight: 110 g including battery \pm 10 g

Capacity

- Active talking time 12 hours
- Stand-by time 150 hours

Battery pack information

87743418

Lithium-ion battery

ICP73048

Nominal voltage: 3.7V

Rated capacity: 1.0Ah

Max charge voltage 4.2V

Max discharge current 2.0A

Max charge current: 1.0A

Safety advises for Lithium-ion batteries:

- Don't crush.
- Don't heat or incinerate
- Don't short-circuit
- Don't dismantle
- Don't immerse in any liquid
- It may vent or rupture
- Respect charging instructions
- Don't charge below 0 c
- Discharge: -20 c to + 60 c

Date code U3

Made for KIRK telecom A/s

By YL Energy Ltd.

Product Information

- The product must not be disposed of with unsorted waste, but must be collected separately.
- Please find the EC Declaration of Conformity at <http://www.kirktelecom.com/company/suk242.asp>

