

# Porty G4 Ultra-Rugged Tablet

---

**R08IWK8M-RTU1GP**

Intel® Core™ i5-8265U 1.6 GHz (turbo up to 3.9 GHz)



## Quick Start Guide

---

# Contents

<b>CHAPTER 1: READ ME FIRST</b> .....	<b>3</b>
1.1 ADVISORY CONVENTIONS .....	3
1.2 SAFETY INFORMATION .....	4
1.3 HANDLING AND MAINTENANCE .....	6
1.4 DECLARATION OF CONFORMITY (DoC) .....	7
<b>CHAPTER 2: GETTING STARTED</b> .....	<b>8</b>
2.1 OVERVIEW .....	8
2.2 INTRODUCTION.....	8
2.3 PRODUCT FEATURES .....	8
2.4 UNPACKING .....	9
2.5 DESCRIPTION OF PARTS .....	10
2.6 HOTKEY FOR SPECIFIC FUNCTIONS .....	14
2.7 LED INDICATORS .....	14
2.8 FIRST-TIME OPERATION .....	15
2.9 INSTALLING BATTERY PACK .....	15
2.10 INSTALLING MICROSD CARD .....	15
2.11 INSTALLING MICRO SIM-CARD .....	16
2.12 CONNECTING TO POWER SUPPLY.....	16
2.13 POWERING ON AND OFF .....	17
<b>CHAPTER 3: FIRST TIME OPERATION</b> .....	<b>19</b>
3.1 SETTING UP WINDOWS 10IoT ENTERPRISE.....	19
3.2 WIN-SET INTRODUCTION .....	19
3.2.1 <i>System Information</i> .....	20
3.2.2 <i>Function Buttons</i> .....	20
3.2.3 <i>Device Control</i> .....	23
3.3 BASIC TROUBLESHOOTING .....	24
<b>APPENDIX A: TECHNICAL SPECIFICATIONS</b> .....	<b>26</b>

# Chapter 1: Read Me First

## 1.1 Advisory Conventions

Four types of advisories are used throughout the user manual to provide helpful information or to alert you to the potential for hardware damage or personal injury. These are Notes, Important, Cautions, and Warnings. The following is an example of each type of advisory.

**Note:**

A note is used to emphasize helpful information

**Important:**

An important note indicates information that is important for you to know.



**Caution** A Caution alert indicates potential damage to hardware and explains how to avoid the potential problem.

**Attention** Une alerte d'attention indique un dommage possible à l'équipement et explique comment éviter le problème potentiel.

**Warning!** An Electrical Shock Warning indicates the potential harm from electrical hazards and how to avoid the potential problem.



**Avertissement!** Un Avertissement de Choc Électrique indique le potentiel de chocs sur des emplacements électriques et comment éviter ces problèmes.

## 1.2 Safety Information



### Precaution on Battery Pack *Précaution avec le bloc-pile*

Do Not Disassemble, Modify, or Insert Sharp Objects Into the Battery Pack. Electrolyte leakage, generation of heat, ignition or rupture may result.

*[FR] Ne pas démonter, modifier, ou insérer des objets pointus à l'intérieur du bloc-pile. Une fuite d'électrolyte, la génération de chaleur, l'amorçage ou la rupture peuvent être occasionnés.*

Do Not Short the Positive (+) and Negative (-) Terminals of the Battery. Generation of heat, ignition or rupture may result. When carrying or storing the device, do not place the battery pack together with articles that may contact electricity.

*[FR] Ne pas court-circuiter les bornes Positive (+) et Négative (-) de la pile, la génération de chaleur, l'amorçage ou la rupture peuvent être occasionnés. Lors du transport et du rangement de l'appareil, ne pas placer le bloc- pile en même temps que des articles pouvant créer un contact électrique.*

Do Not Apply Shocks to the Battery by Dropping It or Applying Strong Pressure to It. Electrolyte leakage, generation of heat, ignition or rupture of battery may occurs.

*[FR] Ne pas faire subir de choc à la pile en la laissant tomber ou en appliquant une forte pression dessus. Une fuite d'électrolyte, la génération de chaleur, l'amorçage ou la rupture peuvent être occasionnés.*

Do Not Charge the Battery Other Than Methods Those Specified In This Manual. If the battery is not charged using one of the specified methods, electrolyte leakage, generation of heat, ignition or rupture may result.

*[FR] Ne pas charger la pile par d'autres méthodes que celles spécifiées dans ce manuel. Si la pile n'est pas chargée en utilisant l'une des méthodes spécifiées, une fuite d'électrolyte, la génération de chaleur, l'amorçage ou la rupture peuvent être occasionnés.*

When the Battery Pack Has Deteriorated, Replace It with a New Battery. Continued use of a damaged battery pack may result in heat generation, ignition or battery rupture.

*[FR] Lorsque la pile est détériorée, la remplacer par une nouvelle pile. L'utilisation continue d'une pile endommagée peut occasionner une génération de chaleur, l'amorçage ou la rupture de la pile.*

Do Not Expose the Battery Pack to Excessive Heat, or Extreme Heat (Near Fire, in Direct Sunlight for example) Generation of heat, ignition or rupture may result

*[FR] Ne pas exposer le bloc-pile à une Chaleur Excessive, ou une Chaleur Extrême (Près d'un feu, sous la lumière du soleil par exemple) Une production de chaleur, l'amorçage ou la rupture peuvent être occasionnés*

Do Not Use the Battery Pack With Any Other Products. The battery pack is rechargeable and is only designed for this specific product. If it is used with a product other than the specified product, electrolyte leakage, generation of heat, ignition or rupture may result.

*[FR] Ne pas utiliser avec un autre produit La batterie est rechargeable et a été conçue pour un produit spécifique. Si elle est utilisée sur un produit différent de celui pour lequel elle a été conçue, des pertes d'électrolytes et une production de chaleur sont possibles, elle risque également de prendre feu ou de casser.*

Do Not Use This Product With Battery Other Than the One Specified.

*[FR] Ne pas utiliser ce produit avec une batterie autre que celle spécifiée*

Discontinue using device immediately if you notice the battery is swelling, or looks puffy or misshapen. Do not attempt to charge or use the device. Do not handle a damaged or leaking battery. Do not let leaking battery fluid come into contact with your eyes, skin or clothing.

*[FR] Si vous remarquez une pile gonflée, élargie ou anormale, cesser l'utilisation de l'appareil immédiatement. N'essayez pas de recharger l'appareil ou de l'utiliser. Ne pas manipuler une pile qui fuit ou qui est endommagée. Ne laissez pas de liquide qui fuit entrer en contact avec vos yeux, votre peau ou vos vêtements.*



**General Product Safety**  
**Sécurité générale des produits**

1. Do not block any ventilation openings. Do not place the product against a wall or in an enclosed space as doing so might impede the flow of cooling air.
2. *[FR] Ne pas bloquer les ouvertures de ventilation. Ne pas placer le produit contre un mur ou dans un espace clos de façon à entraver la circulation de l'air de refroidissement.*
3. Do not place the product near any heat sources such as radiators, warm air intakes, stoves or other heat-generating devices (including amplifiers or other heat producing equipment).
4. *[FR] Ne pas placer le produit près d'une source de chaleur comme des radiateurs, les arrivées d'air chaud, poêles ou autres produits générant de la chaleur (y compris les amplificateurs ou autre équipement produisant de la chaleur.)*
5. Protect the power cord from being crushed or pinched, particularly in the area of the plugs, any receptacles used, and the point of exit from the apparatus. Do not break off the ground pin of the power cord.
6. *[FR] Empêcher le cordon d'alimentation d'être écrasé ou pincé, en particulier dans les zones de prises, des containers utilisés, et du point de sortie de l'appareil. Ne pas casser la broche de terre du cordon d'alimentation.*
7. Do not disregard the safety that a polarized or grounded connection can provide. A polarized connection consists of two plugs, one of which is larger than the other. A grounded connection has two blades and a third one that is grounded. If the main plug provided cannot be inserted into your outlet, consult an electrician to replace your obsolete outlet.
8. *[FR] Ne pas ignorer la sécurité qu'une prise polarisée ou une prise de terre peut prévoir. Une prise polarisée se compose de deux fiches, dont l'une est plus large que l'autre. Une prise de terre possède deux lames et une troisième qui est la terre. Si la fiche principale fournie ne peut être insérée dans votre prise, consultez un électricien pour remplacer votre prise obsolète.*
9. Use only accessories specified by the manufacturer.  
*[FR] Utiliser uniquement les accessoires spécifiés par le fabricant.*

10. This product should not be used near water such as bathtubs, sinks, swimming pools, wet basement, etc.  
*[FR] Ce produit ne doit pas être utilisé près de l'eau comme les baignoires, les éviers, les piscines, les sous-sols humides, etc.*

1. Use only with its transport carriage, stand, tripod, console or table specified by the manufacturer or sold with the product. When using a carriage, move the carriage assembly with the product carefully to avoid damage from falling over.
2. *[FR] Utiliser uniquement avec son chariot de transport, support, trépied, console ou table spécifiés par le fabricant ou vendu avec le produit. Lors de l'utilisation d'un charriot, déplacez l'ensemble chariot avec le produit avec soin pour éviter tout dommage de chute.*
3. Unplug this apparatus during lightning storms or when it is not being used for long periods.
4. *[FR] Débrancher cet appareil durant les orages ou lorsqu'il n'est pas utilisé pendant de longues périodes.*

5. Refer all servicing to qualified service personnel. A technical intervention is required when the apparatus has been damaged in any way, for example if the power cord or plug is damaged, liquid has been spilled or objects have fallen inside the unit, if the product has been exposed to rain or moisture, if it does not operate normally or if it has been dropped.
6. *[FR] Confier toute réparation à du personnel qualifié. Une intervention technique est nécessaire lorsque l'appareil a été endommagé de quelque façon, par exemple si le cordon d'alimentation ou la fiche est endommagé, du liquide a été renversé ou des objets sont tombés à l'intérieur de l'unité, si le produit a été exposé à la pluie ou à l'humidité, s'il ne fonctionne pas normalement ou s'il a été jeté.*



**General Guideline**  
**Directive générale**

It is recommended to reboot the device when some functions are defect or inactive. If it still can't solve the problems please contact your dealer or agent.

*Il est recommandé de redémarrer l'appareil lorsque certaines fonctions sont défectueuses ou inactives. Si le problème persiste, veuillez contacter votre revendeur ou votre agent.*

## 1.3 Handling and Maintenance



### General Guideline Guide Général

Keep the product at least 13 cm (5 inches) away from electrical appliances that can generate a strong magnetic field such as TV, refrigerator, motor, or a large audio speaker.

*[FR] Garder le produit au moins à 13 cm (5 pouces) de distance des appareils électriques qui peuvent générer un fort champ magnétique comme une télévision, un réfrigérateur, un moteur, ou un important haut-parleur.*

Do not place heavy objects on top of the tablet computer as this may damage the display.

*[FR] Ne pas placer d'objets lourds sur le dessus de l'ordinateur tablette cela peut endommager l'écran.*

The screen surface can be easily scratched. Use with care. Do not use paper towels to clean the display but use the included cleaning cloth. Avoid touching it with a pen or pencil.

*[FR] La surface de l'écran peut être facilement rayée. Utiliser avec précaution. Ne pas utiliser de serviette en papier pour nettoyer l'écran mais utiliser le chiffon de nettoyage inclus. Éviter de toucher avec un stylo ou un crayon.*

To maximize the life of the backlight in the display, allow backlight to automatically turn off as a result of power management. Avoid using a screen saver or other software that prevents the power management from working.

*[FR] Pour maximiser la durée de vie du rétroéclairage de l'écran, autoriser le rétroéclairage résultant de la gestion de l'alimentation. Éviter d'utiliser un économiseur d'écran ou un autre logiciel empêchant la gestion de l'alimentation de fonctionner.*



### Cleaning Guideline Guide de nettoyage

Use a soft cloth moistened with water or a non-alkaline detergent to wipe the exterior of the product.

*[FR] Utiliser un chiffon doux humidifié avec de l'eau ou un détergeant non alcalin pour essuyer l'extérieur du produit.*

Gently wipe the display with a soft, lint-free cloth. Do not use alcohol or detergent on the product.  
*[FR] Essuyer délicatement l'écran avec un chiffon doux non pelucheux. Ne pas utiliser d'alcool ou un détergent sur le produit.*

### Touchscreen Guideline Guide de l'écran tactile

Use your finger or the stylus on the display. Using sharp or metallic object may cause scratches and damage the display, thereby causing errors.

*[FR] Utiliser votre doigt ou le stylet sur l'écran. L'utilisation d'un objet pointu ou métallique peut provoquer des rayures.*

Use a soft cloth to remove dirt on the display. The touchscreen surface has a special protective coating that prevents dirt from sticking to it. Not using a soft cloth may cause damage to the special protective coating on the touchscreen surface. To clean off hard to remove dirt, blow some steam on the particular area and gently wipe away using a soft cloth.

*[FR] Utiliser un chiffon doux pour enlever la poussière sur l'écran. La surface de l'écran tactile a un revêtement protecteur spécial empêchant la saleté de se coller à lui. Ne pas utiliser un chiffon doux peut endommager le revêtement spécial sur la surface de l'écran tactile. Pour nettoyer les saletés plus difficiles à enlever, souffler de la buée sur la zone particulière et essuyer doucement avec un chiffon doux.*

Do not use excessive force on the display. Avoid placing objects on top of the display as this may cause the glass to break.

*[FR] Ne pas utiliser une force excessive sur l'écran. Éviter de placer des objets au dessus de l'écran cela pourrait provoquer une cassure du verre.*

When there is a noticeable discrepancy in the operation of the touchscreen function (your touch does not correlate to the proper location on the screen), recalibrate the touchscreen display.

*[FR] Lorsqu'il y a un écart sensible dans le fonctionnement de l'écran tactile (votre contact ne correspond pas à la bonne position sur l'écran), recalibrer l'écran tactile.*

## 1.4 Declaration of Conformity (DoC)

### FCC Statement

This device complies with part 15 FCC rules.



Operation is subject to the following two conditions:

1. This device may not cause harmful interference.
2. This device must accept any interference received including interference that may cause undesired operation

This equipment has been tested and found to comply with the limits for a class "B" digital device, pursuant to part 15 of the FCC rules. These limits are designed to provide reasonable protection against harmful interference when the equipment is operated in a commercial environment. This equipment generates, uses, and can radiate radio frequency energy and, if not installed and used in accordance with the instruction manual, may cause harmful interference to radio communications. Operation of this equipment in a residential area is likely to cause harmful interference in which case the user will be required to correct the interference at his own expense.

### CE Notice (European Union)



Electromagnetic Compatibility Directive (2014/30/EU)

1. EN55024: 2010/ A1: 2015
    - IEC61000-4-2: 2009
    - IEC61000-4-3: 2006+A1: 2007+A2: 2010
    - IEC61000-4-4: 2012
    - IEC61000-4-5: 2014
    - IEC61000-4-6: 2014
    - IEC61000-4-8: 2010
    - IEC61000-4-11: 2004
  2. EN55032: 2015/AC:2016
  3. EN61000-3-2:2014
  4. EN61000-3-3:2013
- Low Voltage Directive (2014/35/EU)
1. EN 60950-1:2006/A11:2009/A1:2010/A12:2011/ A2:2013

This equipment is in conformity with the requirement of the following EU legislations and harmonized standards. Product also complies with the Council directions.

## Chapter 2: Getting Started

### 2.1 Overview

This chapter tells you information about Winmate® Ultra Rugged Tablet Computer, its highlighted features, and provides basic instructions for using the Ultra-Rugged Tablet Computer.

### 2.2 Introduction

Thank you for purchasing Porty G4 Ultra-Rugged Tablet. The Ultra-Rugged Tablets are powered by Intel® Core™ i5-8265U 1.6 GHz (turbo up to 3.9 GHz) processor that was designed for high-performance computing and featured a 4-wire resistive touch screen may be operated with ease by either a plastic stylus or a fingertip.

The Ultra-Rugged Tablet Computer packs WLAN, BT, GPS, and WWAN function - all into a single device. The Ultra-Rugged Tablet offers highly reliable mobility and embedded hardware for data collection. A broad range of configuration options makes Ultra Rugged Tablets a highly customizable and most versatile mobile solution for mission-critical mobile professionals.

### 2.3 Product Features

Winmate® 8.4" inch Ultra-Rugged Tablet Computer features:

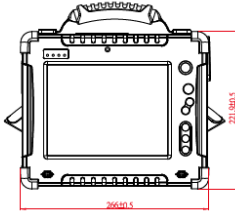
2. 8.4" with resistive touch screen
3. Intel® Core™ i5-8265U 1.6 GHz (turbo up to 3.9 GHz)
4. Alu-Mg alloy housing with protective rubber
5. MIL-810G Shock, Vibration and Drop Std.
6. Trusted platform module (TPM) V2.0
7. Built-in Wireless, BT
8. Optional 4G LTE



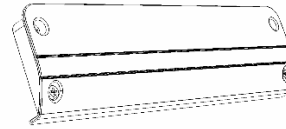
## 2.4 Unpacking

If any of the following items are missing or damaged, contact us. Standard packing list includes:

- **Tablet Computer**



- **Standard Battery**



- **Driver CD**



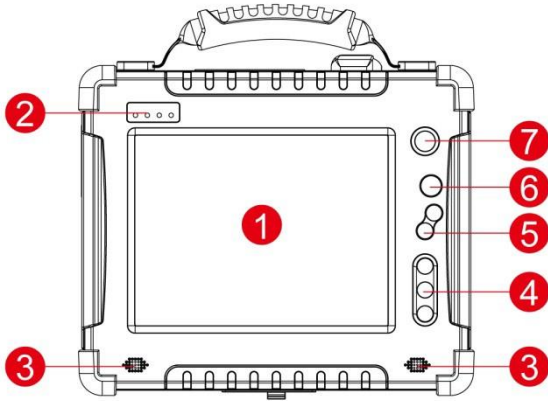
- **Quick Start Guide**



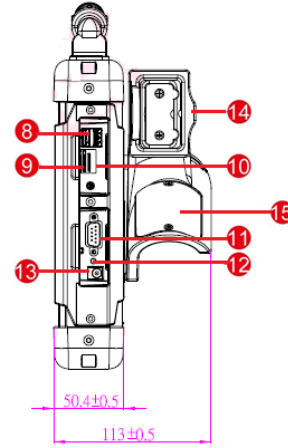
## 2.5 Description of Parts

### 8.4", R08IWK8M-RTU1GP

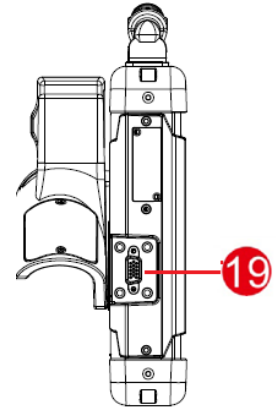
Front:



Right:

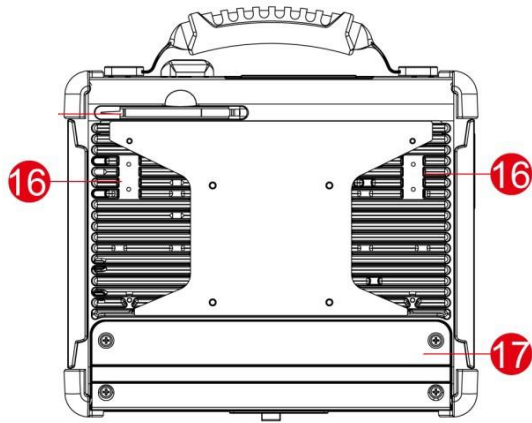
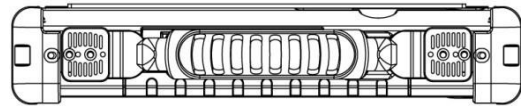
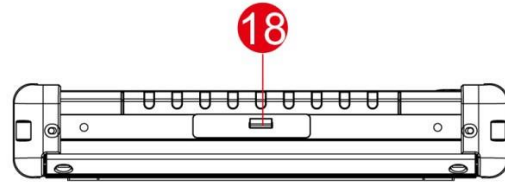


Left:



No	Item	Description
1	Resistive Touch Screen	Display acts as one of the inputs for the Tablet Computer.
2	LED Indicators	Show the current status of the Tablet Computer: Power, Battery, Storage, Wi-Fi.
3	Speaker	2 x 1 Watt Speaker.
4	Hot Key	Programmable hot-key (short and long press) for user to define by application. Default.
5	Up Button  Down Button	Push up key to increase brightness or volume in Menu Function.  Push down key to decrease brightness or volume in Menu Function.
6	Menu Button	Menu function to show Win-set utility.
7	Power Button	Power On/Off the unit.

No	Item	Description
8	2 x USB 3.0	High-speed USB port connects to USB devices, such as USB flash drive, mouse, keyboard, printer, etc.
9	Micro SIM Card Slot	Slot to insert Micro SIM Card.
10	Micro SD Card Slot	Slot to insert Micro SD Card.
11	RS232/422/485	RS232/422/ 485 COM Port interface for serial communication.
12	Power Jack	DC-in power input jack
13	Reset Button	Hardware reset Button.
14	OBD Holder	To put the Windy Cable
15	CASIO Hook	To fit the tablet on the Steering Wheel.
19	Windy Cable Connector	To connect the Windy Cable.

**Rear:****Top:****Bottom:**

No	Item	Description
16	Adjustable Kickstand	This is the location to install the adjustable kickstand that allows user to adjust their viewing angles.
17	Battery	11.1V, 5200 mAh Lithium-Ion Battery (6 cells).

No	Item	Description
18	Docking Connector	Port to docking solutions such as vehicle docking to provide power and external antenna.

## 2.6 HotKey for Specific Functions

For the physical buttons on the Ultra-Rugged Tablet Computer, in addition to their dedicated functions detailed in the previous section, they can also be used to emulate commonly used keyboard keystrokes. Under a different scenario, a single physical button or a combination of physical buttons provide different keyboard keystrokes, which are specified below:






**Under POST (Before Windows boot up):**

**Under Windows:**

Button	Keystroke
<b>Power On Button</b>	Push 4 seconds continuous to turn-on the PC. Need 8 second continuous push to force the Tablet PC turn-

Button	Keystroke
<b>Barcode Scan Key</b>	scanner scans and then writes the string into the keyboard buffer
<b>j</b>	"j" character on the keyboard
<b>n</b>	"n" character on the keyboard
<b>#</b>	The same with the "#" key on the keyboard
<b>*</b>	The same with the "*" key on the keyboard.
<b>!</b>	The "!" should be a little bit different: it's our reset button. One should press it for 3 seconds and then the key "F3" on the

## 2.7 LED Indicators

LED Term	LED Indicator	Indicator Status Description
<b>Power mode</b>		<b>Green light</b> : when Power is On. No light means when Power is Off.
<b>Battery Status</b>	 	<b>Orange Light</b> : Under charging <b>Red Blinking Light</b> : Low Battery
<b>Storage Status</b>		<b>Green light</b> : when storage is under operation.
<b>Barcode Status</b>		<b>GreenBlinking Light</b> : When barcode reader receives the scan data ,the barcode led will blinking.

## 2.8 First-time Operation

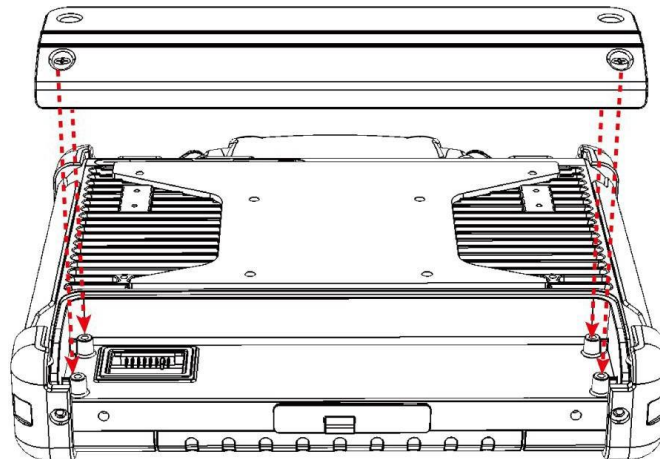
To start using the tablet computer for the first time:

- Install the battery pack.
- Install the Micro SD card (If needed).
- Install the Micro SIM card (If equipped with 4G/ LTE or 3G function)
- Charge the Tablet Computer.
- Power on the Tablet Computer.
- Configure the settings of the t Tablet Computer.

## 2.9 Installing Battery Pack

To insert the standard battery pack into the Tablet Computer:

1. Disconnect AC adapter and power cord from the Tablet Computer.
2. Turn the Tablet Computer over, back facing up.
3. Insert the battery on the connector-pins side first, and then lower the battery into the battery compartment. Screw tightly on the battery to make it fully inserted.
4. Make sure the battery is completely inserted; the battery will be flat against the housing once fully inserted.



**Place the Tablet (back facing up) and insert the battery into the battery slot.**

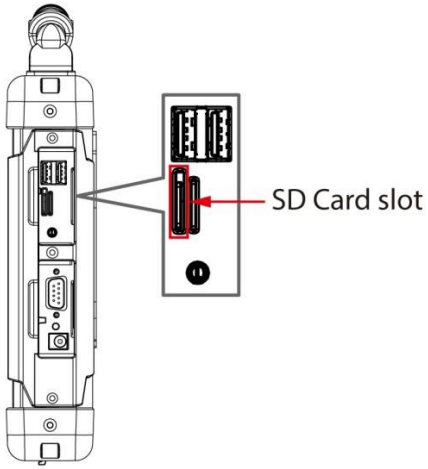
To remove the battery pack:

1. Power off the Tablet Computer (or turn on sleep mode). Disconnect any cords connected to the Tablet Computer.
2. Turn the tablet computer over, back facing up.
3. Locate the battery and unscrew it to the “Unlocked” position.
4. Lift the battery out.

## 2.10 Installing Micro SD Card

*To install the SD card to the Tablet Computer:*

- Power off the Tablet Computer.
- Open the I/O Cover.
- Insert the SD card in to the SD card slot.



## 2.11 Installing Micro SIM-Card

Notice that 4G/LTE feature is optional. The Tablet Computer supports data connection with 4G/LTE or 3G Modules and fits Micro-SIM card.

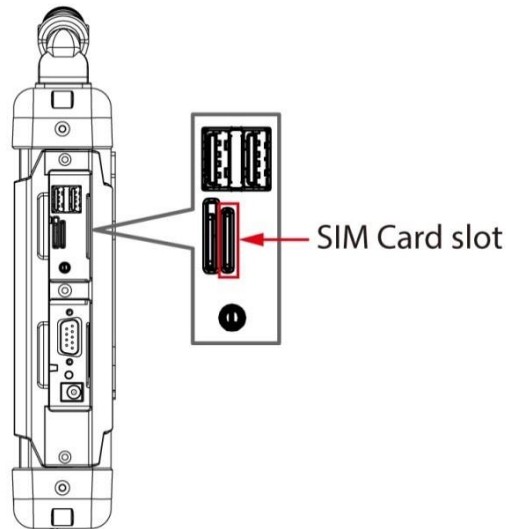


**Caution** Power off the tablet before installing the (4G/LTE or 3G module and micro SIM card, or the Tablet Computer might be damaged by the incorrect installation behaviors.

**Attention** Éteignez la tablette avant d'installer le (module 4G / LTE ou 3G et la carte micro SIM, ou l'ordinateur tablette peut être endommagé par des comportements d'installation incorrects.

*Before using the data connection program, please perform the following procedures to insert the SIM Card into your Tablet Computer:*

1. Power off the Tablet Computer.
2. Open the I/O Cover.
3. Insert the SIM card in to the SIM Card slot.



## 2.12 Connecting to Power Supply

The Tablet Computer operates either on external AC power or internal battery power. It is recommended to use AC power when you start up the Tablet Computer for the first time.



**Caution** Use only the AC adapter included with your Tablet Computer. Using other AC adapters may damage the Tablet Computer and the Battery.

**Attention** N'utilisez que l'adaptateur secteur fourni avec votre tablette. L'utilisation d'autres adaptateurs secteur peut endommager la tablette et la batterie.

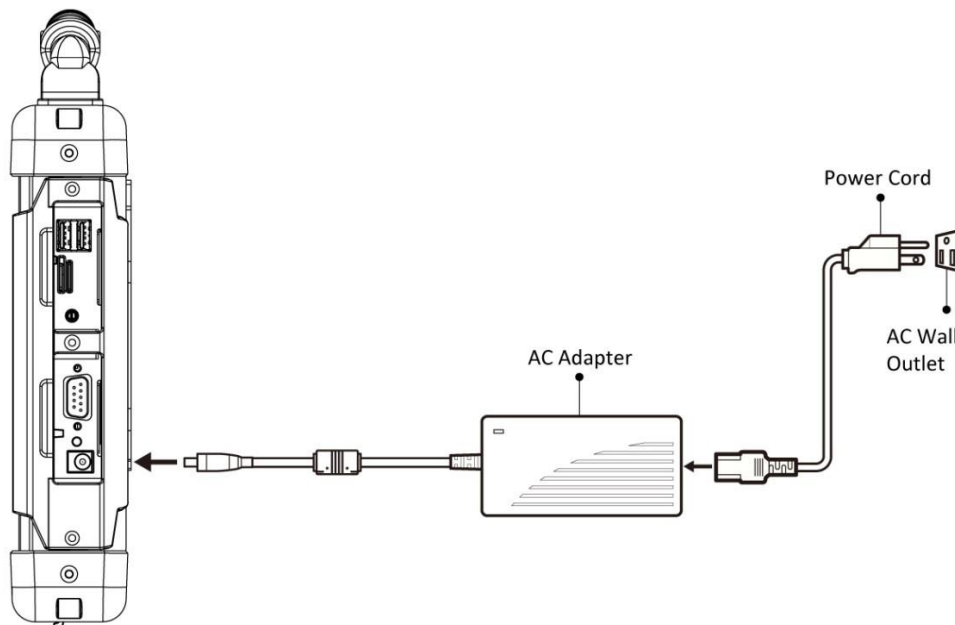


**Important:** For users starting up the Tablet Computer for the first time with internal battery power, please make sure the battery is fully charged before using.

**Note:** Measured at dimming LCD brightness. Varies depending on the usage conditions, or when an external device is attached.

*Perform the following to connect the Tablet Computer to AC Power:*

- On the side of the Tablet Computer, lift the I/O protective cover by pulling on the latch.
- Plug the DC cord of the AC adapter into the Power Jack of the Tablet Computer.
- Plug the AC power cord into the AC adapter.
- Finally, Plug the AC power cord into the electrical outlet.



When the AC Adapter is connected, the battery pack starts charging. The battery LED indicator on the Tablet Computer would show different states. Please refer to description of LED indicator on Description of Parts.

## 2.13 Powering On and Off

### Powering On

Press and hold the power button for **3 seconds** until the blue LED power indicator light up.



**Note:**

- Do not press the power button repeatedly.
- Do not perform the following operations until the Disk Activity Indicator is off.
  1. Connecting or disconnecting the AC adapter
  2. Pressing the power button
  3. Touching the tablet buttons, screen, or external keyboard/mouse

## Powering Off

*Perform the following procedure to power off the Tablet Computer:*

- Make sure you have closed any programs that are open on the desktop. Start Screen apps don't need to be closed.
  - Tap on the **Settings** charm.
  - Tap on **Power**.
  - Tap on **Shut Down**.
- Wait for Tablet Computer to power off.





**Note:** The computer will forcibly be powered off if the power button is pressed and held for **6 seconds or longer**.

## Chapter 3: First Time Operation

### 3.1 Setting Up Windows 10 IoT Enterprise

This section details how to setup different version of the Windows that may be installed on the Tablet for the first time.

 **Note:** Please note that BIOS varies by different Windows OS; for users going to change OS, please contact our sales contact window for details.

 **Important:** For users starting up the Tablet Computer for the first time with internal battery power, please make sure the battery is fully charged before using.

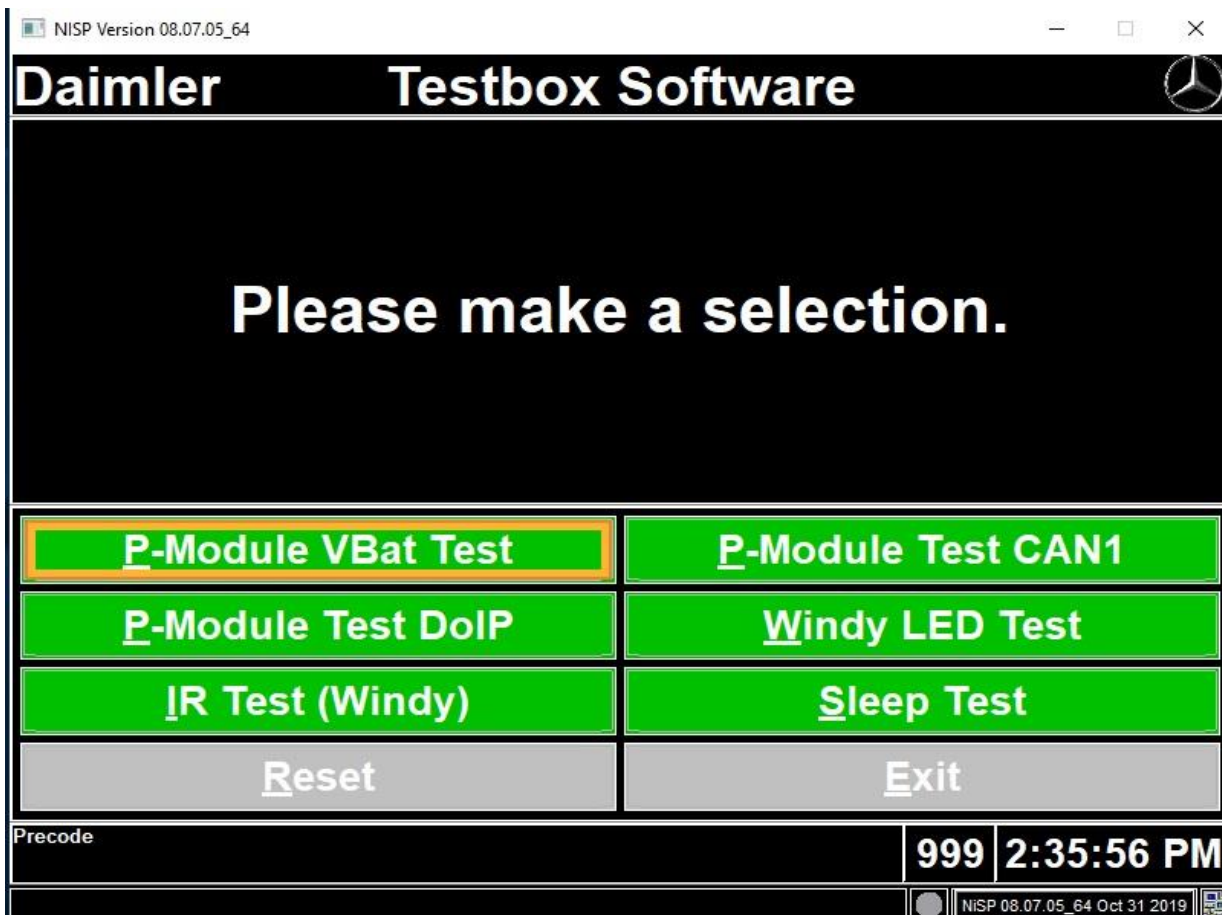
When you use the Tablet Computer for the first time, please set up Windows 10 IoT Enterprise operating system. Follow on-screen instructions or check the User Manual for guidance.

### 3.2 Win-set Introduction

To implement the process of function test or BIOS update, you have to use VGA connector to show the Porty G4's output to a display (Resolution will be adjusted automatically).

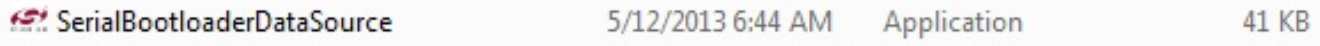
#### 1. The procedure to test connecting with OBD BOX

- 1.1 After running the program, please select the "P-Module VBat Test"
- 1.2 Click all the testing Item sequentially. It will show green when it Pass, but red when Fail.
- 1.3 After all the test has been done, please click the "EXIT" icon.

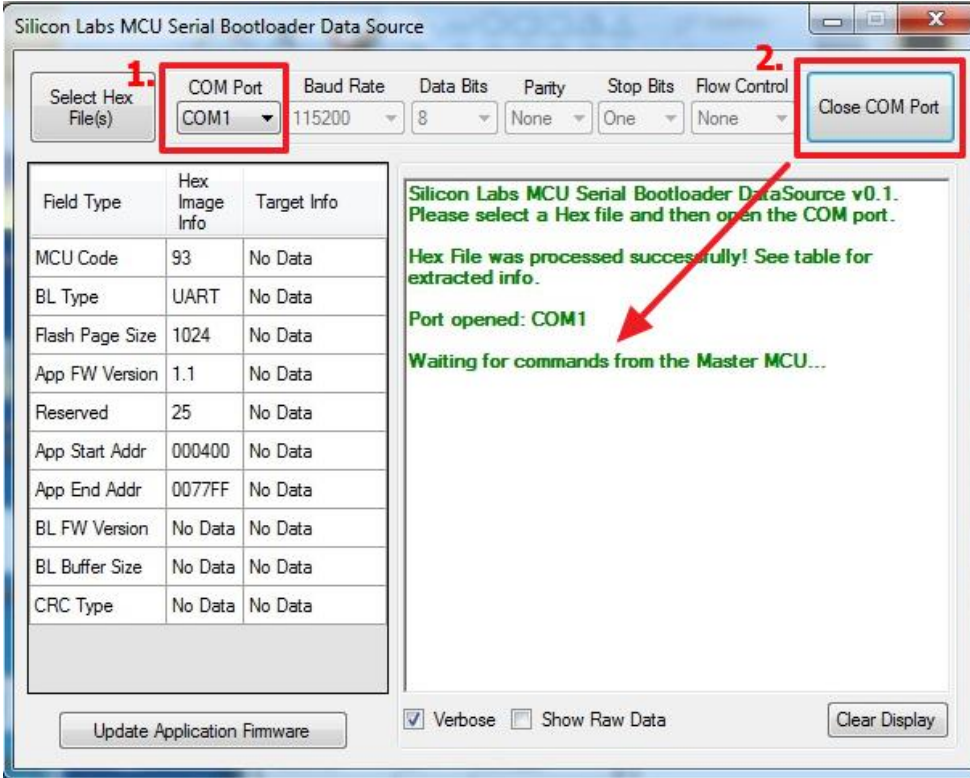


## 2. The procedure to update bios of MCU

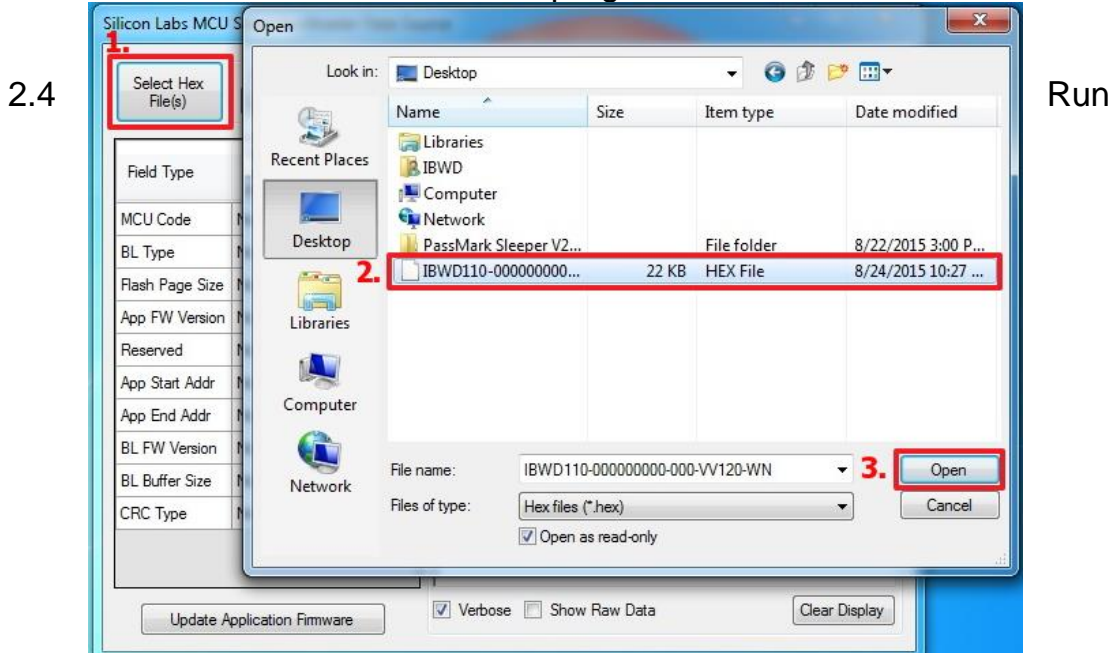
### 2.1 Open "MCU AP" folder and run "SerialBootloaderDataSource.exe"

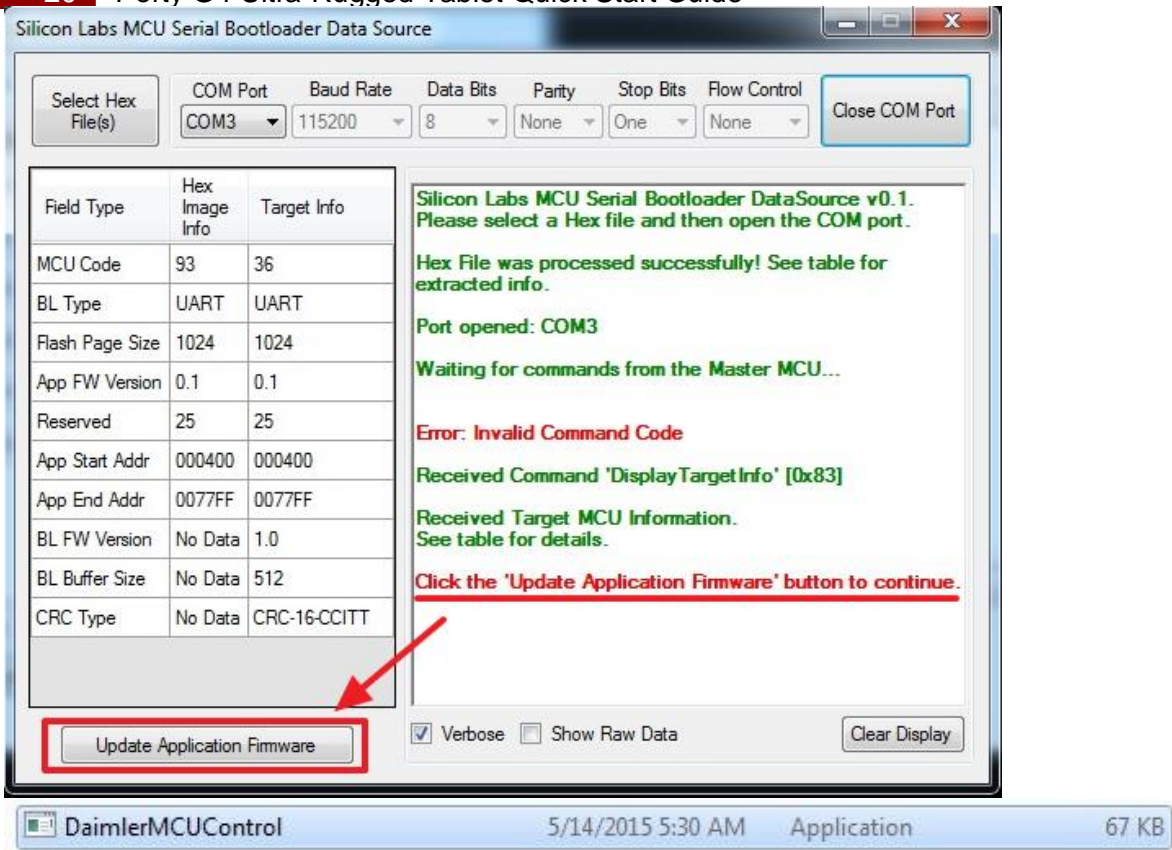


- 2.2. a. Click "Select Hex File(s)"
- b. Click .hex file
- c. Click "Open"
- d. Run the Hex file successfully as follow.



- 2.3 a. Click "COM Port"
- b. Click "Open COM Port"
- ✳Please do not close the whole program window.

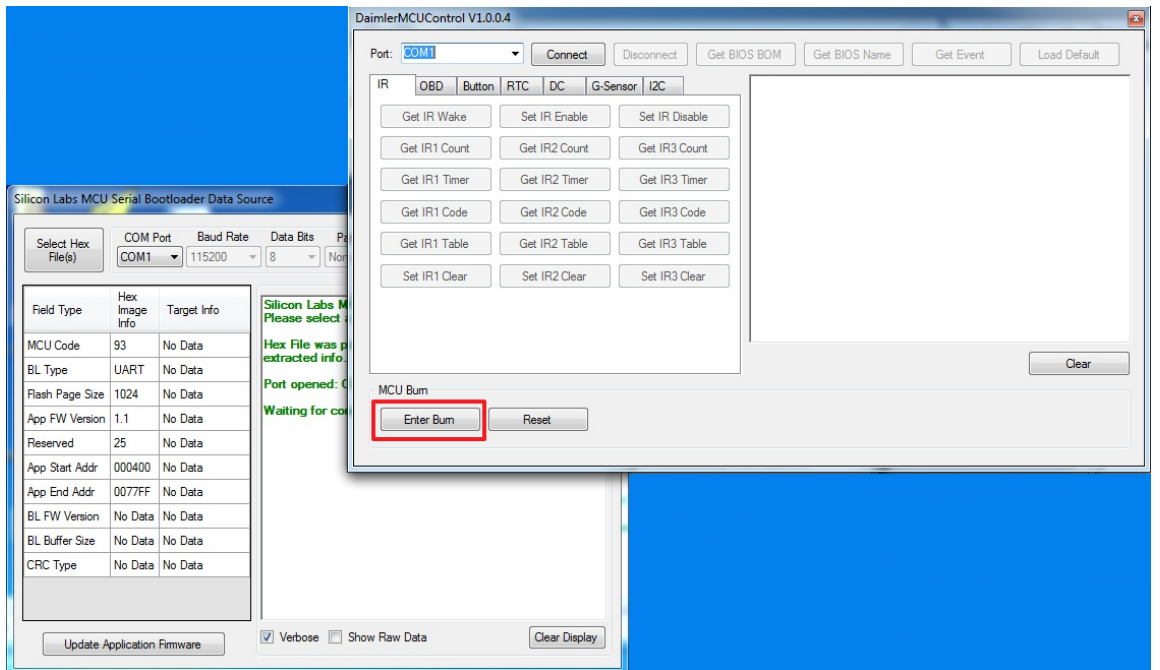


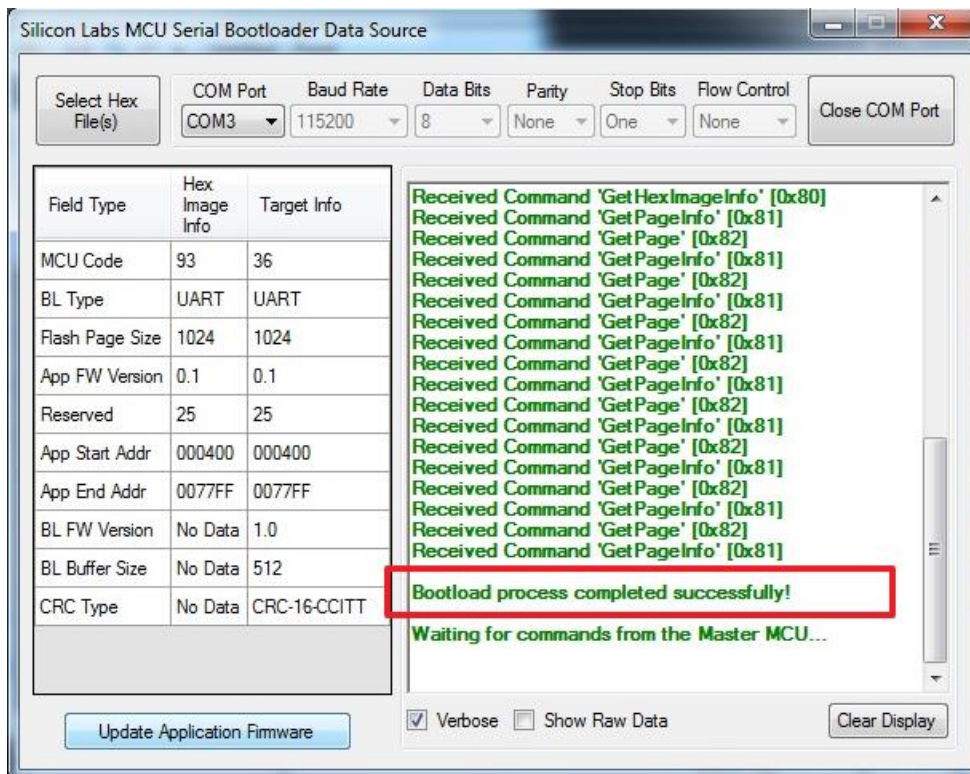
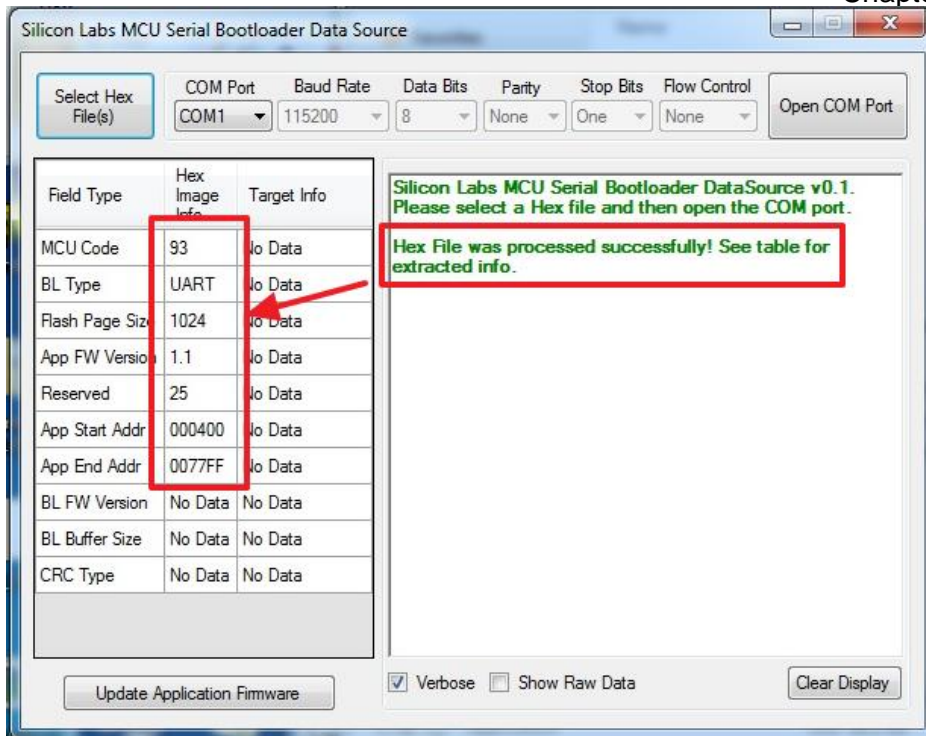


2.5 Click “Enter Burn”

2.6 If the program shows the notice “Click the ‘Update Application Firmware’ button to continue ”, please click “Update Application Firmware” .

2.7 When the message “Bootload process completed successfully!” appears in the column, it means update boot loader process was fully completed.

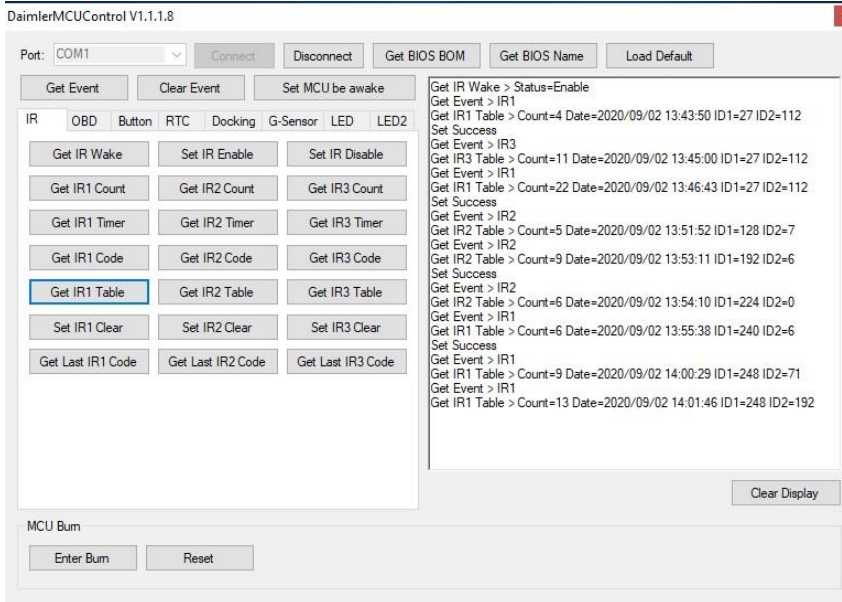




### 3. The procedure to test all the Wake up function

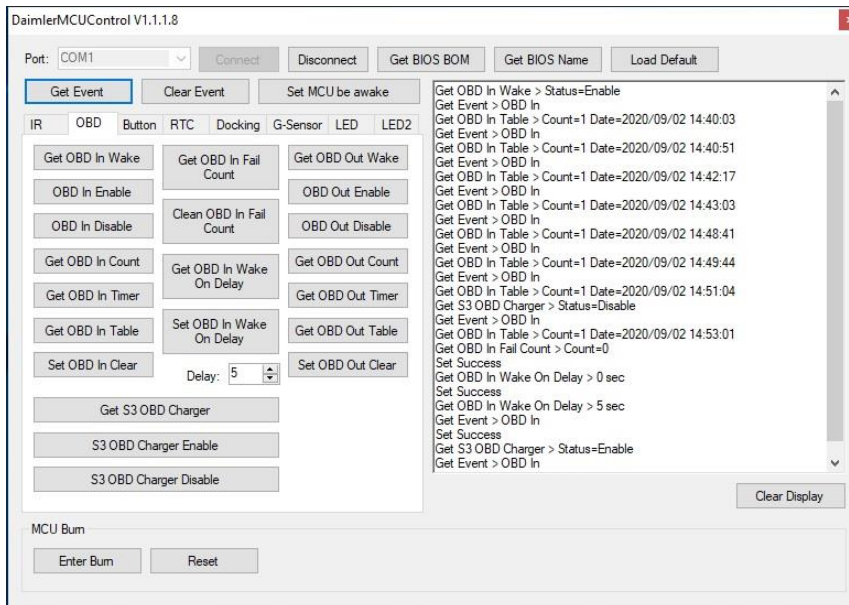
#### 3.1 IR Wake up

- Implement Daimler MCU Control and perform COM Port Connect to COM3 then set IR Enable.
- Click Get IR Wake and make sure IR Wake Status=Enable
- Let the system to Sleep / Hibernate / Shut down Mode, then use the TX BOX to wake Windy up and get event to confirm which IR worked.
- Click Get IR Table and make sure if it has count, the information of time and ID need to be correct.



### 3.2 OBD In Wake up

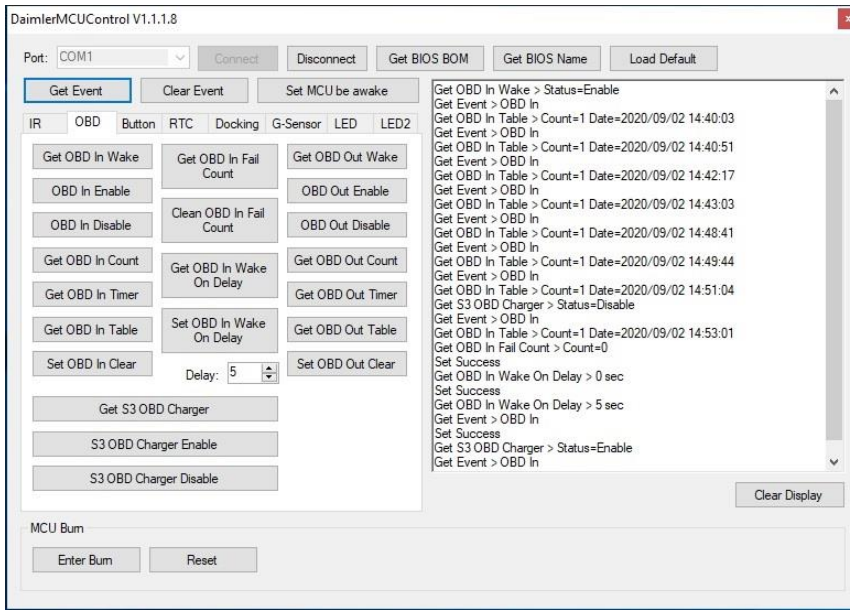
- a. Implement Daimler MCU Control and perform COM Port connect to COM3 then set OBD In Enable.
- b. Click Get OBD In and make sure OBD In Wake Status=Enable.
- c. Allow the system to enter the Sleep / Hibernate / Shut down Mode and plug in the OBD cable to wake up the Porty G3 S. Click get Event to confirm whether wake up by OBD In.
- d. Click OBD In Setting make sure whether the count and time information are correct.



### 3.3 OBD Out Wake up

- a. Implement Daimler MCU Control and perform COM Port connect to COM3 then set OBD out enable.
- b. Click Get OBD Out and make sure OBD Out Wake Status=Enable.
- c. Allow the system to enter the Sleep / Hibernate / Shut down Mode and un-plug the OBD cable to wake up the Porty G3 S. Click get Event to confirm whether wake up by OBD Out.

d. Click OBD Out settings and make sure whether the count and time information are correct.



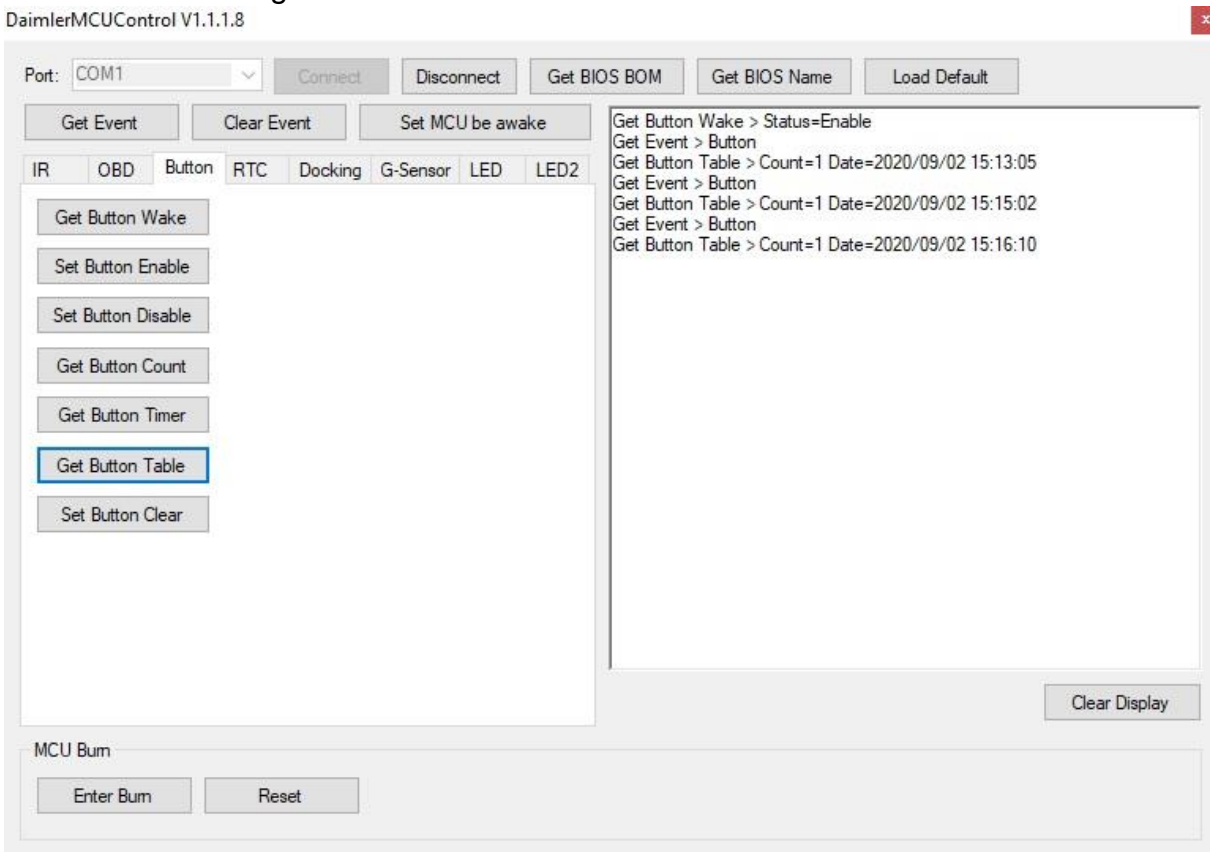
### 3.4 Button Wake up

a. Implement Daimler MCU Control and perform COM Port connect to COM3 then set Button out enable

b. Click Get Button settings and make sure Button Wake Status=Enable.

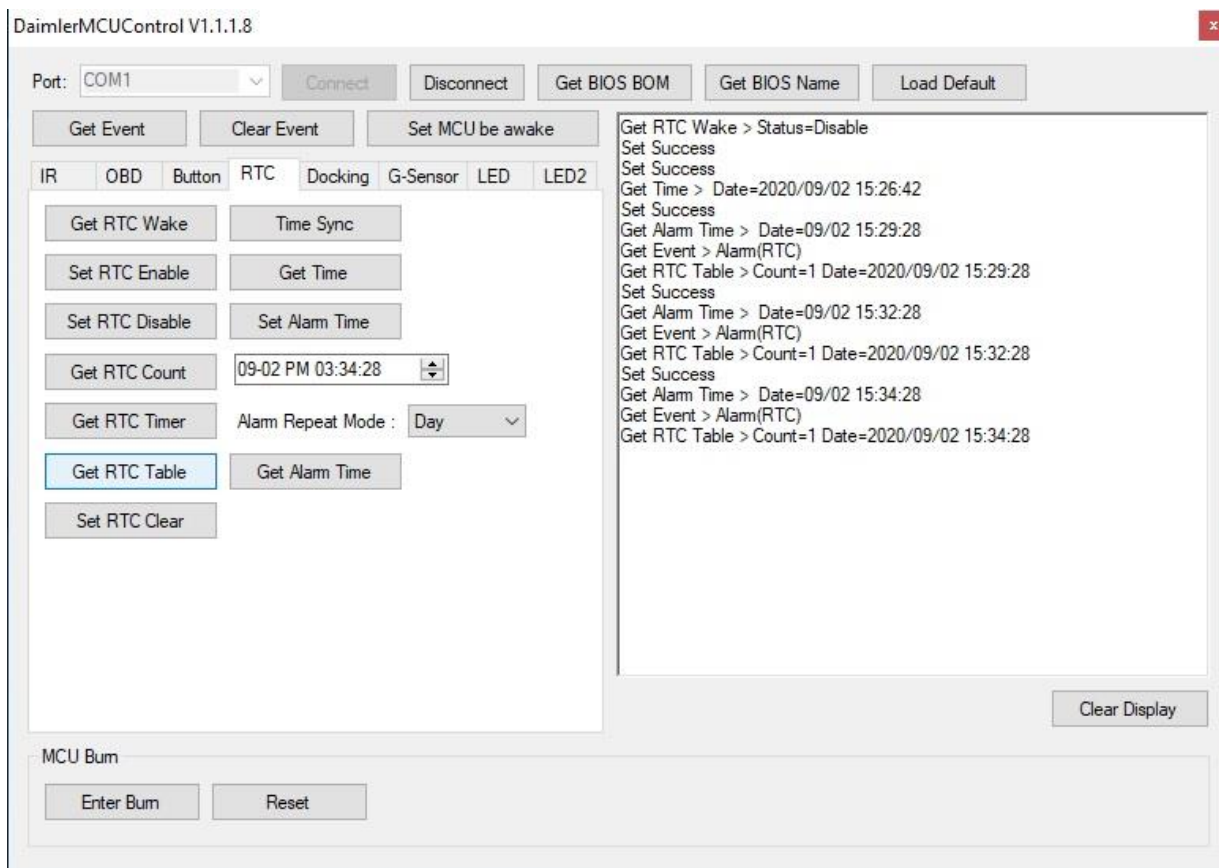
c. Allow the system to enter the Sleep / Hibernate / Shut down Mode and press the power button to wake up the Porty G3 S. Click get Event to confirm whether wake up by Button.

d. Click OBD Out setting make sure whether the count and time information are correct.



### 3.5 RTC Wake up

- Implement Daimler MCU Control and perform COM Port connect to COM1 then set RTC enable.
- Click Get RTC Wake and make sure RTC Wake Status=Enable.
- Click on the Time Sync and allow time synchronization
- Click Get Time, confirm the time is synchronized
- Set Alarm Time in order to set the wake-up time.
- Allow the system to enter the Sleep / Hibernate / Shut down Mode and after a specified time to wake up Windy Plus. Click get Event to confirm whether wake up by RTC.
- Click Get RTC Table and make sure whether the count and time information are correct.
- You can choose Year/Month/Day/Hour/Minute in Alarm Repeat Mode.



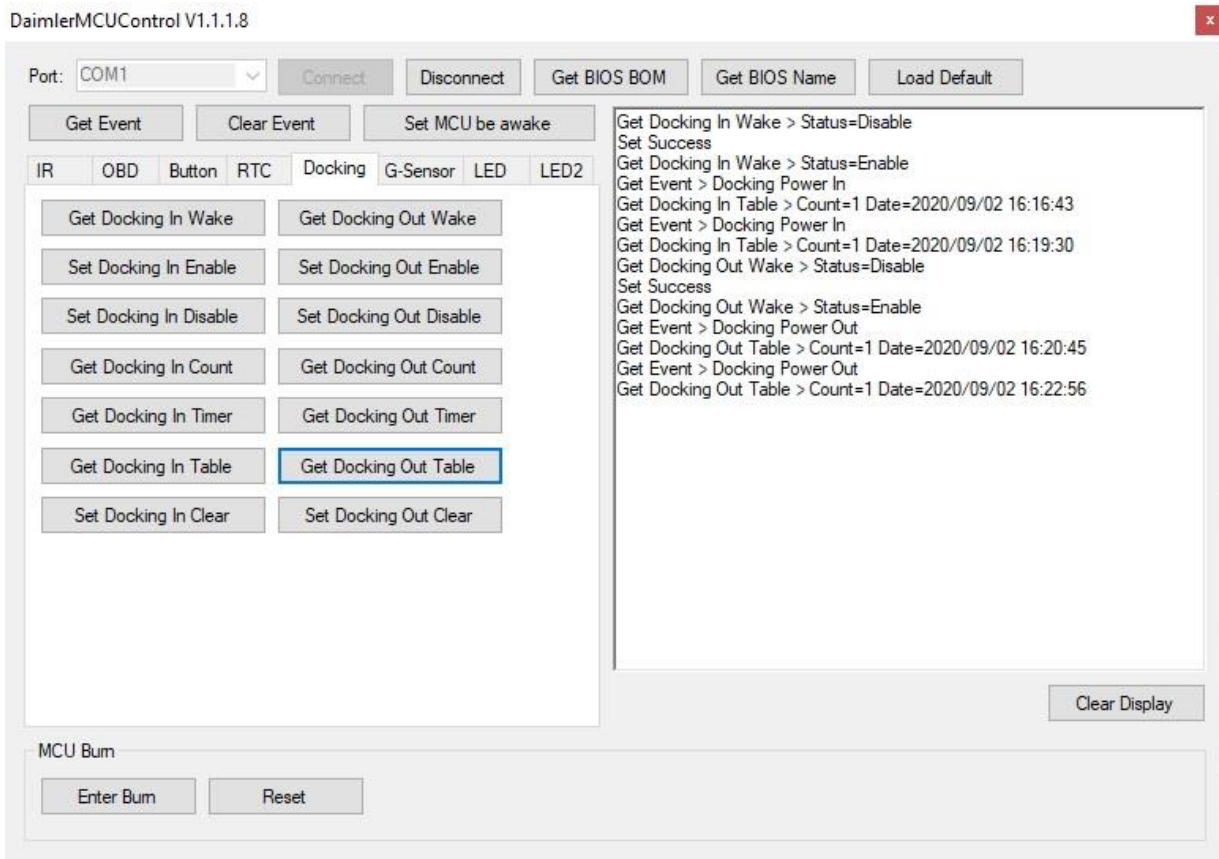
### 3.6 Docking In Wake up

- Implement Daimler MCU Control and perform COM Port connect to COM1 then set DC In enable.
- Click Get Docking In Wake and make sure Docking in Wake Status=Enable.
- Allow the system to enter the Sleep / Hibernate / Shut down Mode and plug in the power adapter to wake up the Windy Plus, Click get Event to confirm whether wake up by DC Power In.
- Click Get Docking In Table and make sure whether the count and time information are correct

### 3.7 Docking Out Wake up

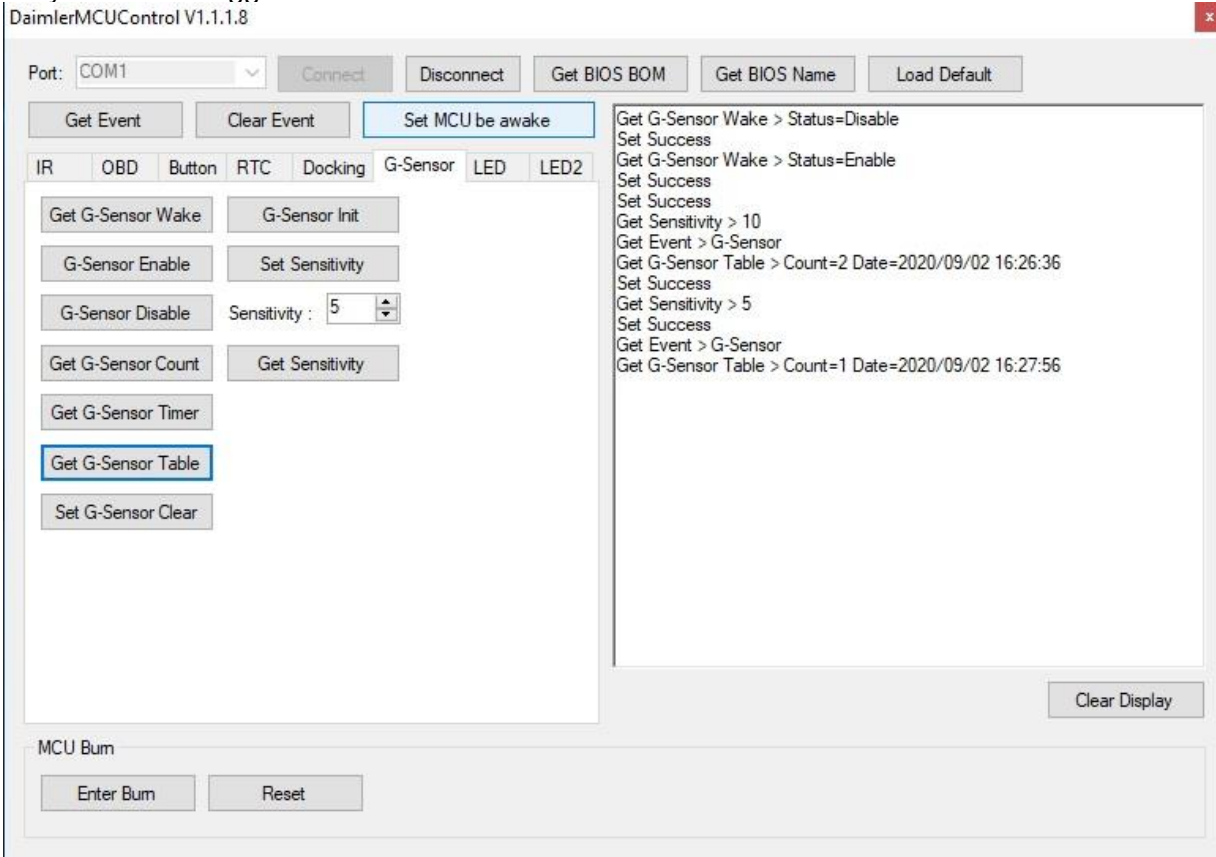
- Implement Daimler MCU Control and perform COM Port connect to COM1 then set Docking Out enable.
- Click Get Docking Out Wake and make sure Docking Out Wake Status=Enable.
- Allow the system to enter the Sleep / Hibernate / Shut down Mode and unplug the power adapter to wake up the Windy Plus. Click get Event to confirm whether wake up by DC Power Out.
- Click Get Docking Out Table and make sure whether the count and time information are correct.





### 3.8 G-Sensor Wake up

- Implement Daimler MCU Control and perform COM Port connect to COM1 then set G-Sensor enable.
- Click Get G-Sensor Wake and make sure G-Sensor Status =Enable.
- Click on the G-Sensor Int to adjust the sensitivity of G-Sensor (10 to 0).
- Allow the system to enter the Sleep / Hibernate / Shut down Mode and motion the Windy Plus to wake up it. Click get Event to confirm whether wake up by G-Sensor.
- Click Get G-Sensor Table and make sure whether the count and time information are correct.



### 3.3 Basic

## Troubleshooting

Problem	Solution
<b>The removable battery is not charging</b>	<ul style="list-style-type: none"> <li>Make sure the AC adapter is properly connected, and that the removable battery is properly inserted.</li> </ul>
<b>Nothing appears on the screen</b>	<ul style="list-style-type: none"> <li>The Tablet Computer may be in sleep mode. Press the power button to wake up the display.</li> <li>The brightness level may be too low. Increase brightness.</li> </ul>
<b>The screen suddenly turns blank and the power indicator goes off</b>	<ul style="list-style-type: none"> <li>Make sure that LED indicator is not powered off in Win-set.</li> <li>Make sure the AC adapter is properly connected.</li> <li>If running on battery power, the battery may be depleted, charge the battery.</li> </ul>
<b>Wireless LAN signal quality is poor</b>	<ul style="list-style-type: none"> <li>The Tablet Computer may be out of range. Move the Tablet Computer closer to the access point or another wireless LAN device associated with it.</li> <li>Check if your surroundings have interferences, such as microwave ovens, cordless phones. Move the Tablet Computer away from objects causing interference.</li> </ul>

<b>Problem</b>	<b>Solution</b>
<b>I cannot connect to another wireless LAN device</b>	<ul style="list-style-type: none"><li>• Make sure that wireless LAN feature is powered on.</li><li>• Make sure that the SSID setting is the same for every wireless LAN device in the network.</li><li>• Restart the Tablet Computer.</li><li>• Make sure the IP address or subnet mask setting is correct.</li></ul>
<b>I cannot connect to another device with BT</b>	<ul style="list-style-type: none"><li>• Make sure that both devices have BT powered on (For the Tablet Computer, check Win-set to see if BT is powered on).</li><li>• Make sure that the distance between the two devices is within 10 meters, and there are no walls or large obstructions between the devices.</li><li>• Make sure both devices are powered on and configured to be discoverable.</li><li>• Make sure that both devices are compatible.</li></ul>
<b>No sound is produced</b>	<ul style="list-style-type: none"><li>• Adjust volume of the Tablet Computer by pressing on the volume rocker.</li><li>• If using an external audio device, make sure that the cable is properly connected.</li></ul>
<b>I cannot project the Tablet Computer display to another monitor</b>	<ul style="list-style-type: none"><li>• Make sure the Graphic driver is installed.</li><li>• Make sure the output setting selected is correct.</li></ul>

## Appendix A: Technical Specifications

	<b>Model Name</b>
	<b>R08IWK8M-RTU1GP</b>
<b>Display</b>	
Size	8.4"
Resolution	800 x 600
Brightness	600 nits
Contrast Ratio	600:1
Viewing Angles	75/75/60/70
Touch	Resistive Touch
<b>System Specifications</b>	
CPU	Intel® Core™ i5-8265U 1.6 GHz (turbo up to 3.9 GHz)
Graphic Chipset	Intel® UHD Graphics
System Memory	8 GB SODIMM DDR4-2400 (Max 32 GB)
Storage	1. 512 GB M.2 SSD 2. NVME SSD up to 512GB
OS	Windows 10 IoT Enterprise
<b>Interface</b>	
Ethernet LAN	1 x RJ45 For P-Module
COM	1 x RS232/422/485 (Thru BIOS Setting)
USB	2 x USB 3.0
Power Input	1 x Power Jack
Memory Card Slot	1 x Micro SD Card Slot
SIM Card Slot	1 x Micro SIM Card Slot
Audio Connector	1 x Audio Combo Connector (Mic in or Line out)
<b>Audio</b>	
Speaker	2 x 1 Watt Speaker
<b>Wireless Communications</b>	
WLAN	Optional 4G/ LTE or 3G
WWAN	802.11 a/b/g/n/ac
BT	BT
<b>Keyboard and Input</b>	
Physical Buttons	1 x Power, 1 x "J", 1 x "n", 1 x "#", 1 x "*" , 1 x "!"
LED Indicators	Power, Battery, HDD, Barcode Status
Touch	Resistive Touch
<b>Data Capture</b>	
Barcode	2D Barcode Reader (Optional)
<b>Mechanical and Environment</b>	
Dimensions	266 x 222 x 50 mm
Weight	2.39 kg
Housing	Aluminum Magnesium Alloy Housing with Protective Rubber
Operating Temperature	-20°C to 60°C (AC Mode), -10°C to 50°C (Battery Mode)
Storage Temperature	-30°C to 70°C
Operating Humidity	10 to 90% RH, non-condensing
Shock	MIL-STD-810G Method 516.6 Procedure I

	<b>Model Name</b>
	<b>R08IWK8M-RTU1GP</b>
<b>Mechanical and Environment</b>	
Vibration	MIL-STD-810G Method 514.6 Procedure I
Drop	MIL-STD-810G Method 516.6, 4ft to concrete
IP Rating	Default IP54 (Optional IP65)
<b>Power Management</b>	
Power Input	19V DC
Battery	11.1V, 5200mAh Lithium-Ion Battery (6cells)
Battery Operating Time	8 hours*
AC Adapter	100-240V, 50-60Hz / 19V DC
<b>Security Function</b>	
Security	Trusted platform module (TPM) V2.0
<b>Standards and Certification</b>	
EMC	FCC
Safety	CE
<b>Accessories</b>	
Standard Accessories	Standard Battery Quick Start Guide Manual & Driver CD
Optional Accessories	Multi-functional Desktop Docking station OBS Cable

**Note:** Measured at dimming LCD brightness. Varies depending on the usage conditions, or when an external device is attached.



## FCC Warning

This device complies with part 15 of the FCC Rules. Operation is subject to the following two conditions: (1) This device may not cause harmful interference, and (2) this device must accept any interference received, including interference that may cause undesired operation.

Any Changes or modifications not expressly approved by the party responsible for compliance could void the user's authority to operate the equipment.

**Note:** This equipment has been tested and found to comply with the limits for a Class B digital device, pursuant to part 15 of the FCC Rules. These limits are designed to provide reasonable protection against harmful interference in a residential installation. This equipment generates uses and can radiate radio frequency energy and, if not installed and used in accordance with the instructions, may cause harmful interference to radio communications. However, there is no guarantee that interference will not occur in a particular installation. If this equipment does cause harmful interference to radio or television reception, which can be determined by turning the equipment off and on, the user is encouraged to try to correct the interference by one or more of the following measures:

- Reorient or relocate the receiving antenna.
- Increase the separation between the equipment and receiver.
- Connect the equipment into an outlet on a circuit different from that to which the receiver is connected.
- Consult the dealer or an experienced radio/TV technician for help.

This equipment complies with FCC radiation exposure limits set forth for an uncontrolled environment. This equipment should be installed and operated with minimum distance 20cm between the radiator & your body.