

E430T Series

Elegant Industrial PDA

User Manual

Notes:

- All screens in this guide are simulated. Actual displays may be different.
- Depend on the different software version on your E430T; you may get different screens with same tasks.
- Unless specified otherwise, all instructions to perform tasks in this guide assume that you are starting from the home screen.

FEDERAL COMMUNICATIONS COMMISSION

This equipment has been tested and found to comply with the limits for a Class B digital device, pursuant to Part 15 of the FCC Rules. These limits are designed to provide reasonable protection against harmful interference in a residential installation. This equipment generates, uses and can radiate radio frequency energy and, if not installed and used in accordance with the instructions, may cause harmful interference to radio communications. However, there is no guarantee that interference will not occur in a particular installation. If this equipment does cause harmful interference to radio or television reception, which can be determined by turning the equipment off and on, the user is encouraged to try to correct the interference by one or more of the following measures:

- Reorient or relocate the receiving antenna.
- Increase the separation between the equipment and receiver.
- Connect the equipment into an outlet on a circuit different from that to which the receiver is connected.
- Consult the dealer or an experienced radio/TV technician for help.

CAUTION:

Any changes or modifications not expressly approved by the party responsible for compliance could void the user's authority to operate the equipment.

This transmitter must not be co-located or operating in conjunction with any other antenna or transmitter.

This device complies with part 15 of the FCC Rules. Operation is subject to the following two conditions:

- (1) This device may not cause harmful interference, and
- (2) this device must accept any interference received, including interference that may cause undesired operation.

RF exposure warning

The equipment complies with FCC RF exposure limits set forth for an uncontrolled environment.

The antenna(s) used for this transmitter must not be co-located or operating in conjunction with any other antenna or transmitter.

RF exposure information (SAR)

This Elegant Industrial PDA meets the government's requirements for exposure to radio waves. This Elegant Industrial PDA is designed and manufactured not to exceed the emission limits for exposure to radio frequency (RF) energy set by the Federal Communications Commission of the U.S. Government. The exposure standard for wireless Elegant Industrial PDA employs a unit of measurement known as the Specific Absorption Rate, or SAR. The SAR limit set by the FCC is 1.6 W/kg. Tests for SAR are conducted using standard operating positions accepted by the FCC with the Elegant Industrial PDA transmitting at its highest certified power level in all tested frequency bands. Although the SAR is determined at the highest certified power level, the actual SAR level of the Elegant Industrial PDA while operating can be well below the maximum value. This is because the Elegant Industrial PDA is designed to operate at multiple power levels so as to use only the power required to reach the network. In general, the closer you are to a wireless base station antenna, the lower the power output. The highest SAR value for US model Elegant Industrial PDA as reported to the FCC when tested for use at the body, as described in this user guide, is 0.770 W/kg.

Before starting to use E430T

1) Insert Micro SD / SIM card (Optional)

The built-in storage space of your E430T series PDA is mainly used for operation system. To enable some functions need bigger storage space, such as camera or other APP, please insert a Micro SD card before using.

2) Charge the Battery

The battery in your new E430T series device is not charged yet. Please charge with the bundled USB cable before your first use.

Caution! Please don't remove the battery pack or try to take this PDA apart while the E430T is charging. These actions will result in some damages and may invalidate your warranty.

3) Some tips for using and caring your PDA

Your E430T series PDA is designed to resist damages from certain rugged conditions. However, to help care for your PDA, please avoid prolonged or extreme exposure to those conditions.

- ✓ To ensure the rugged design works and protects your PDA, please be sure the USB connector cover is closed and the back cover is screwed properly.
- ✓ Don't leave your PDA near a heat source; this can damage the device.
- ✓ Avoid dropping your PDA on a hard surface; this can potentially cause damage to the device.
- ✓ To clean your PDA, use a dry soft cloth. Don't use alcohol or other cleaning solutions.
- ✓ Please don't have your PDA contact with water when the cover is opened. The water-proof design works only when the outer case is sealed properly.

Note: Certain apps and features may not be available in all countries.

To know your Ex430xx more

the important keys & connectors

Front View



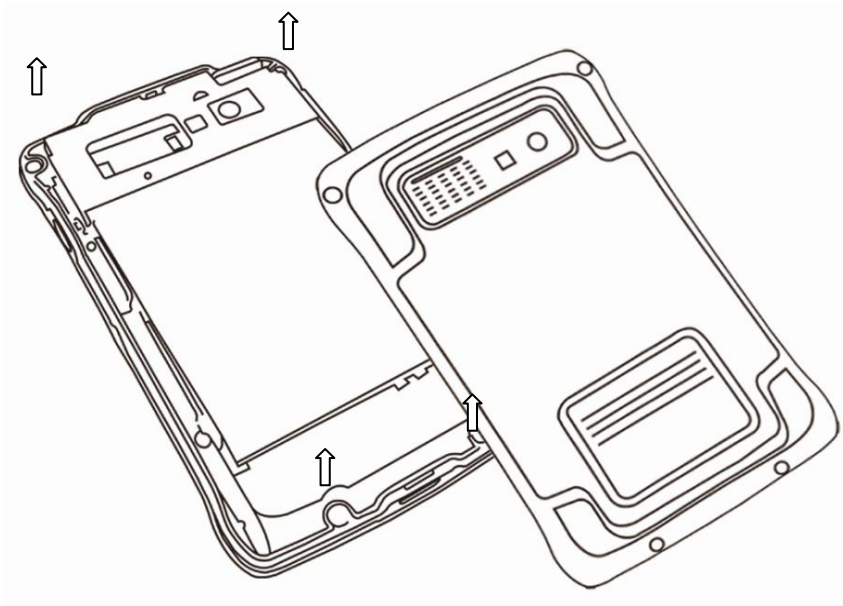
Back View



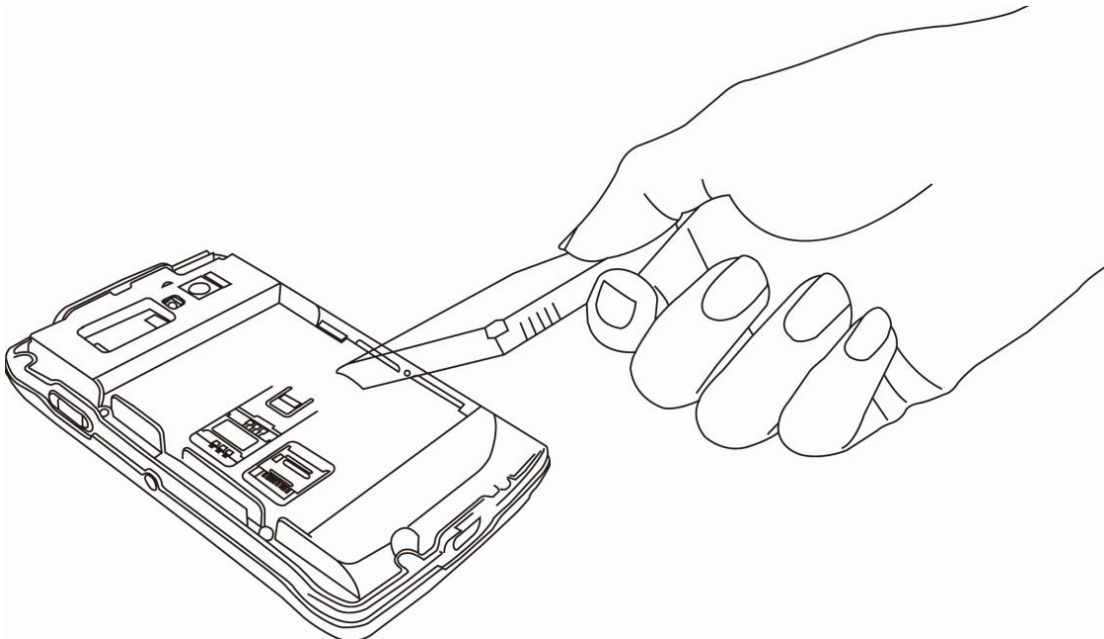
START

Please follow the E43xx QIG to set up E43xx

1. Make the Ex430xx facing down, and then unscrew the screws of Ex430xx.
2. Gently pull Ex430xx out of its back cover.

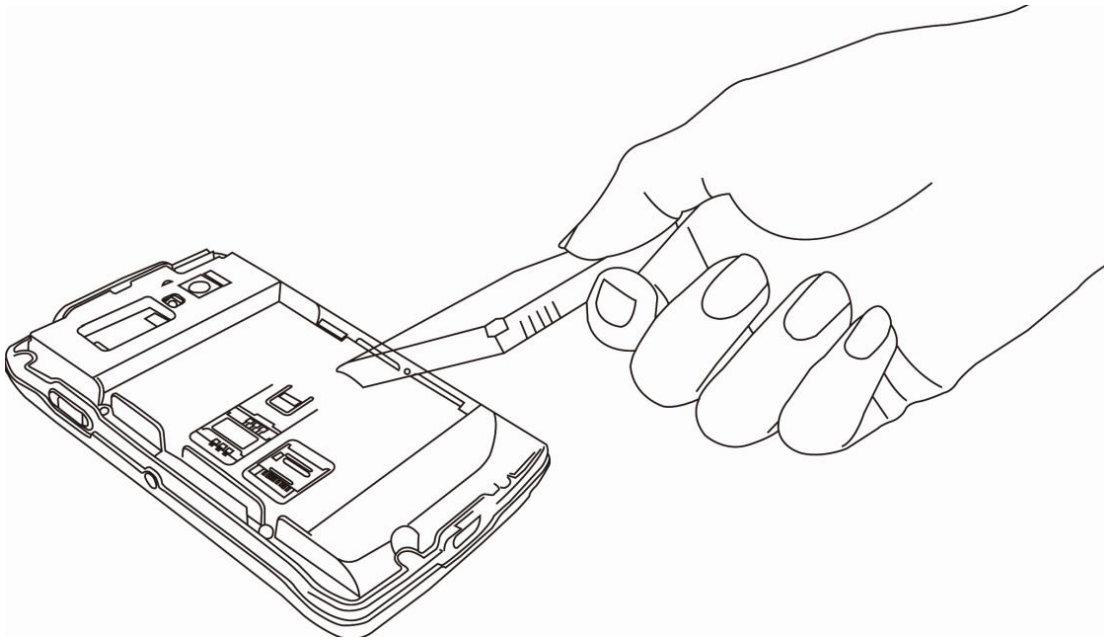


3. Pull the plastic strap, and then remove the battery.

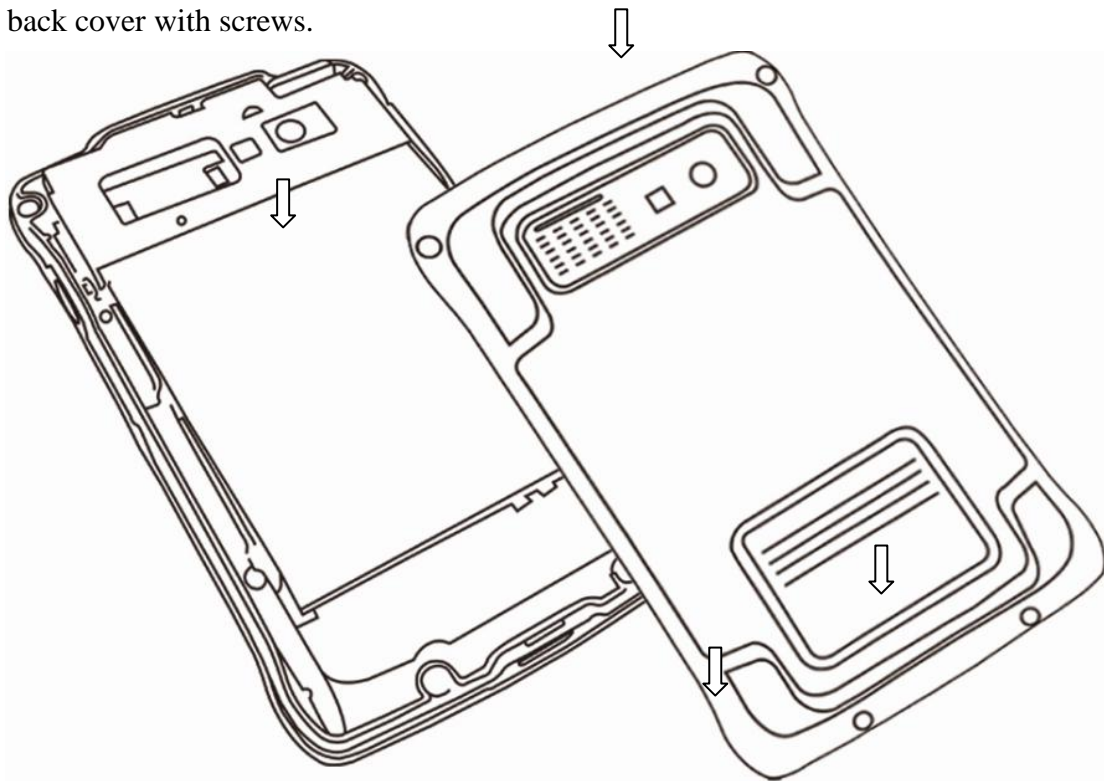


4. Push the metal cover backward and lift the metal cover. Then put the SD card into the socket, close the metal cover and push forward till click sound.

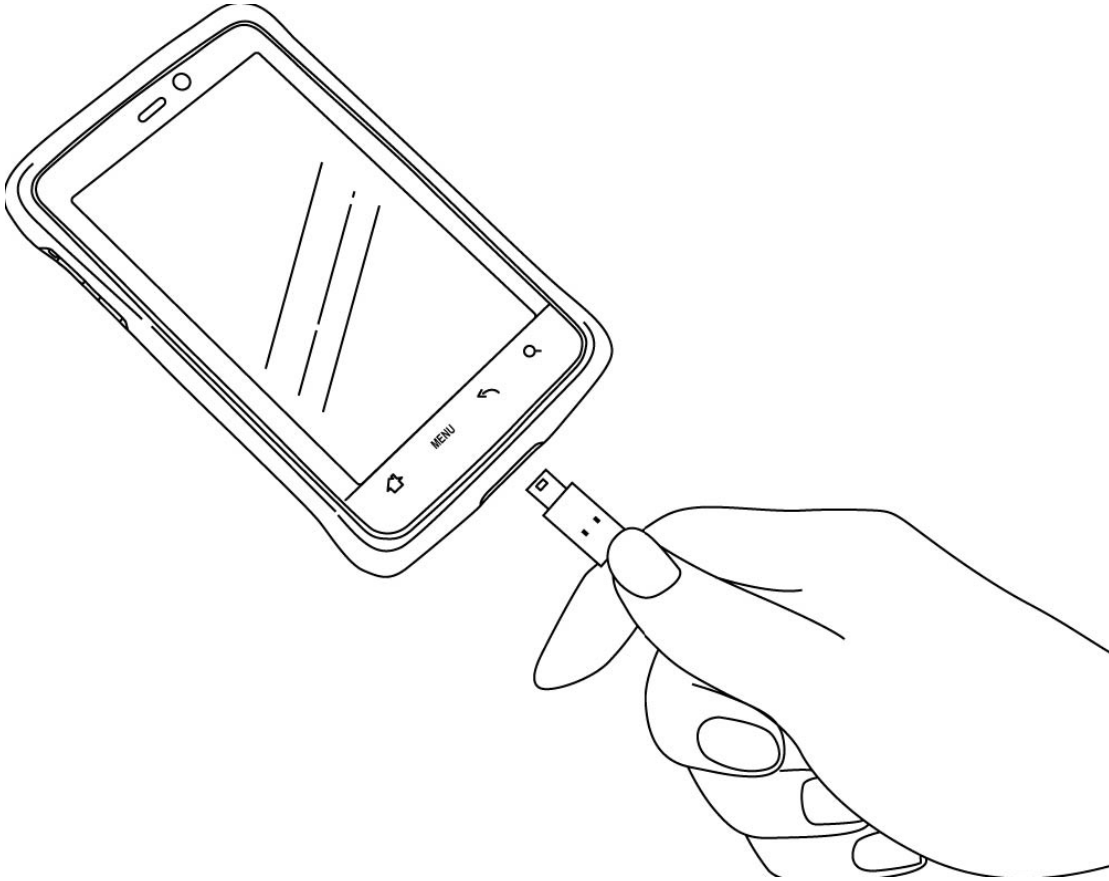
5. Reinsert the battery again.



6. Fix the back cover with screws.



7. Use the supplied power adapter and USB cable to charge Ex430xx for 4hrs.



Note: This product uses a non-removable battery. The battery should only be removed when you want to changed SD card.

Set up and Go

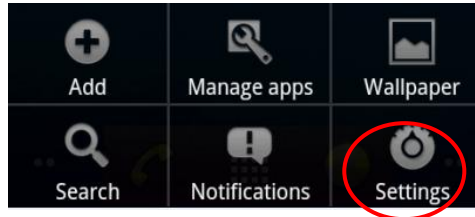
1

Turn on



2

Go to Setting



3

Set Language



Touch icon and keys


a few essentials

Touch on and off

Your touchscreen is on when you need it and off when you don't.

- To make your touchscreen sleep or wake up, just press Power Button on the right side. .
- When you hold the E43XX to your ear during voice transmit, your touchsensor sleeps to prevent accidental touches.
- To change how long your E43xx waits before the screen goes to sleep automatically, touch

MENU> Settings > Display > Screen timeout.

- To make the screen lock when it goes to sleep, see "Screen lock" on page 51. To unlock the screen, press Power , then drag  to the right.

Note: Your touchscreen might stay dark if the sensor just above it is covered.

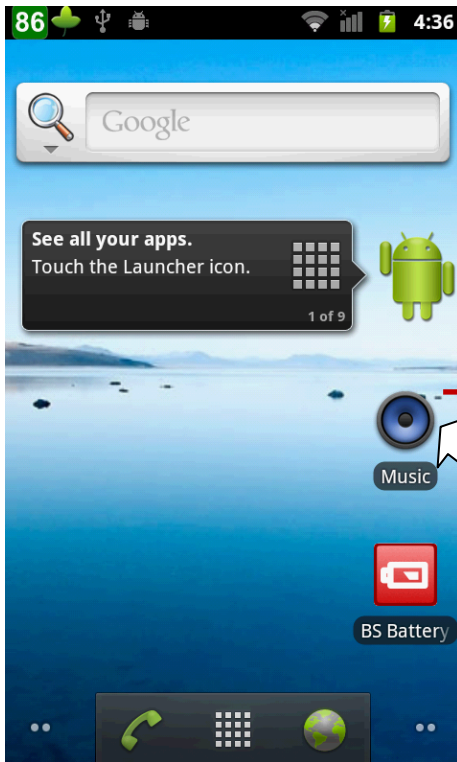


Proximity and light

Don't use covers or screen protectors (even clear ones) that cover this sensor.

How to use the touch

- **Touch:** Choose an icon or option.
- **Long Touch:** Show options.
- **Drag:** Scroll or move slowly.
- **Turn Page:** Scroll or move quickly.
- **Zoom in / out:** Slide fingers apart or together to zoom in or out on Google Maps™, web pages or photos.



Touch & hold to

Slide two fingers apart or together to zoom in or out.


Drag or flick to scroll.



Touch Icon

Home, Manual, Back key, Search



Touch Home  to close any menu or app and return to the home screen. On the home screen, touch and hold Home to show the most recent apps used, then touch an app to open it.

Touch Menu to open menu options.

Touch Back to go back.

Touch Search for text search, or touch and hold for voice search.

Power key menu

Press and hold Power for 5secs to open the power key menu, where you can turn off your E43xx (**Power off**), turn off all wireless connections and put the phone into low-power **Sleep** mode or turn **Flight mode** on/off or **Reboot the E43xx** .

Adjust volume

Press the volume keys to change ring volume (on the home screen) or earpiece volume (during a call).

When playing music or video files, press the volume keys to adjust media volume.



Rotate the screen

When you turn your E43xx, the touchscreen can rotate to stay right-side up:

Find it: Menu > **Settings** > **Display** > **Auto-rotate screen**

Quick tips

If you're not sure what to do next, try one of these:

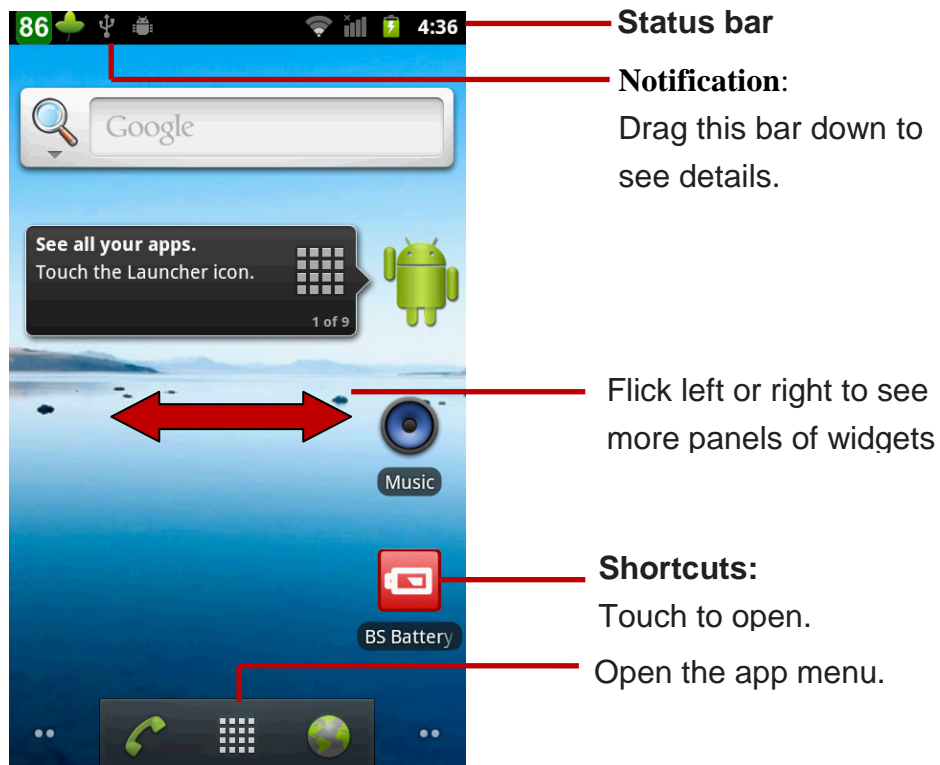
See screen menu —Open a menu for the current screen	Touch Menu
See item options —Open an options menu (if available) for an item on the screen.	Touch & hold the item.
Start again —Go back to the home screen	Touch Home

Home screen


quick access to the things you need most

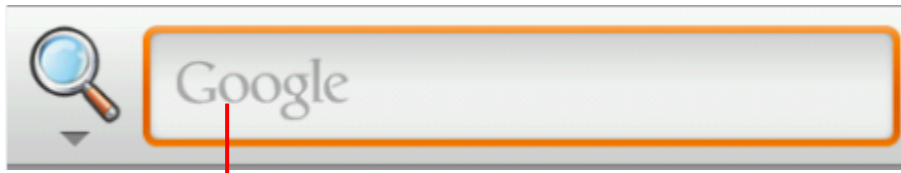
Quick start: Home screen

The *home screen* gives you all your latest information in one place. It's what you see when you turn on the E43xx or touch Home from a menu. It's basically like this:



Search

Touch Search  , then use the window that appears.



Touch here to enter text.

Smartphone status & notifications

Icons at the top of the screen notify you about messages and E43xx status. To view your notifications, touch the status bar and drag it down. Touch a notification to select it.




The table shows different icon's meanings.

Apps & updates

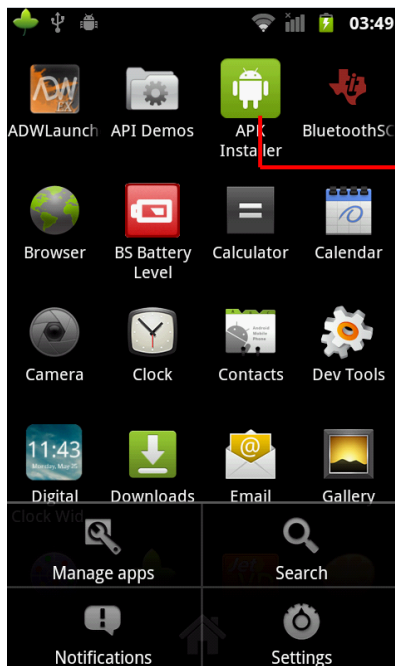
get the app you want

Quick start: Apps & updates

You can find all of your apps in one place. From the home screen, touch  to open the app menu. To see all of your apps, flick up and down.


Browse & install apps

Get all the fun games and cool apps you want! There are a lot of free APPs which can be found on worldwide website, so you can find the app you want.




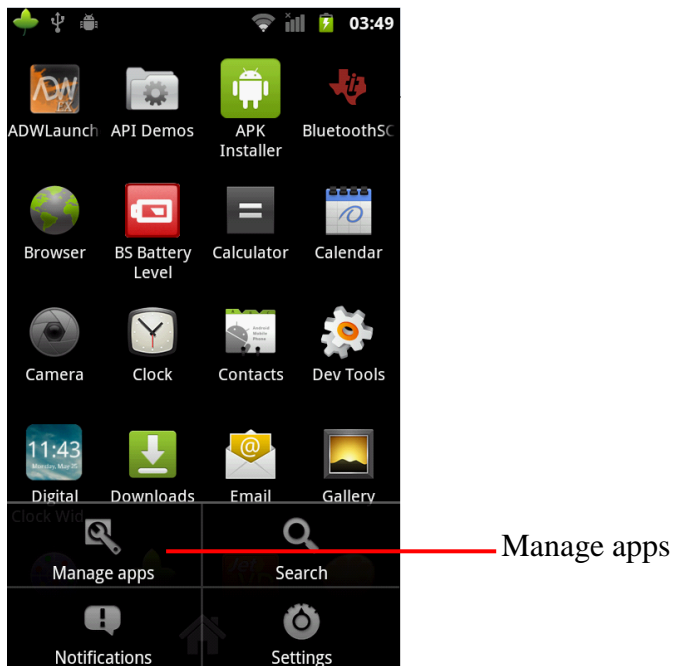
Use APK Installer to install new APPs

Recent apps

Your E43xx remembers the apps that you used most recently. From the home screen, touch and hold Home  to show the most recent apps used.

Manage & restore apps

From the home screen, touch  > **Manage apps**.



Touch an app in the list, then touch **Uninstall** (for apps you downloaded), **Clear cache** or other options.

Update E43xx

You can check, download and install E43XX software updates using your computer:

On your computer, go to www.winmate.com.tw and check the "Download Center" links. If an update is available, follow the installation instructions.

1. Download the update file and copy into Micro SD card in E43xx
2. Reboot (This might take few time, please wait till system boot successfully)
3. Erase the update file in E43xx

Messaging

sometimes it's best to text

Create messages

Find it:  >  **Messaging > New message**

Read & reply to messages

Find it:  >  **Messaging > Message box**

Note: **Message box** shows all of your messages together—text, email and social networking messages. To show only one type of message, touch a message type instead of **Message box**.

- To **open** a text message or social networking message and all of its replies, touch it.
- To **respond** to a message, just open it and enter your response in the text box at the bottom.
- To **forward** a text message, touch and hold a message in the conversation, then touch **Forward message**. For email, touch to choose a reply or forward option.
- To open options, touch and hold a message.

Text entry

keys when you need them

Touchscreen keypad

You can open a keypad on your screen by touching a text box. To close the keypad, touch Back ↶.



Input methods

To select an input method, touch and hold a text entry area on the screen to open the **Edit text** menu. Touch **Input method**, then touch the method you want.

Text input settings

Find it: MENU Menu > **Settings** > **Language & keyboard**

- To edit your dictionary, touch **User dictionary**.
- To change the language and the style for your touchscreen keypad, touch **Select locale**.
- To change input method and settings, touch **Swype** or **Multi-touch keyboard**.