

	Final Output Approval (Hong Kong Office use only)	
	Signature	Date of approval
	Art Dept Approved	
	Engineer Approved	
	QA Engineer Approved	
Remarks:		
Date: Aug 20, 2021		
Prepared By: eddy		

Hero Patrol - Walkie Talkie_EN

Size: A4

Front 1C + Back 1C



WARNING:
CHOKING HAZARD-Small parts.
Not for children under 3 years.

Important! Problems?



**For customer support
Please contact us at:**
**cs@jadatoys.com or
1-800-679-5232**

Between the hours of 9:00 am to 6:00 pm :
Pacific Time : Monday – Friday

WWW.JADATOYS.COM

U.S.A & Canada
30-Day Limited Warranty
Jada Toys Products

Jada Toys, Inc. warrants to the original consumer purchaser that this product will be free of defects in material and workmanship for thirty (30) days from the date of purchase. Jada Toys will repair or replace the product, at our sole discretion, in the event of such a defect within the warranty period.

In the event of a defect covered under this warranty, first call the phone numbers listed below. Many problems can be solved in this manner. If necessary, you may be asked to return the product for a replacement or refund at the place of purchase (please refer to the retailers return policy) or you may be instructed to return the product (postage paid and insured by the consumer) to the address below. Include your name, address, telephone number, copy of dated sales receipt, and a brief explanation of the defect. Repair / replacement and return shipment will be free of charge. Please return the defective part or unit, packed securely. This warranty does not cover damage resulting from unauthorized modification, accident, misuse or abuse. If the product is returned without a dated sales receipt, the product may be excluded from coverage under this warranty. Jada Toys' liability for defects in material and workmanship under this warranty shall be limited to repair or replacement, at our sole discretion, and in no event shall we be responsible for incidental, consequential, or contingent damages (except in those states that do not allow this exclusion or limitation). This warranty is exclusive, and is made in lieu of any express or implied warranty. Valid only in U.S.A. and Canada. This warranty gives you specific legal rights and you may have other rights, which may vary from state to state. Some states do not allow the exclusion of incidental or consequential damages, so the above exclusions or limitations may not apply to you.

TOLL-FREE NUMBER: 1-800-679-JADA (5232)
(valid only in U.S.A. and Canada)
Hours: 9:00 A.M. – 6:00 P.M. Pacific Time; Monday – Friday.
Expect some delay in January following the holiday season.
Please be patient and keep trying the toll-free number.

Address for Returns:
Consumer Relations, Jada Toys, Inc.
938 Hatcher Ave.
City of Industry, CA 91748, USA

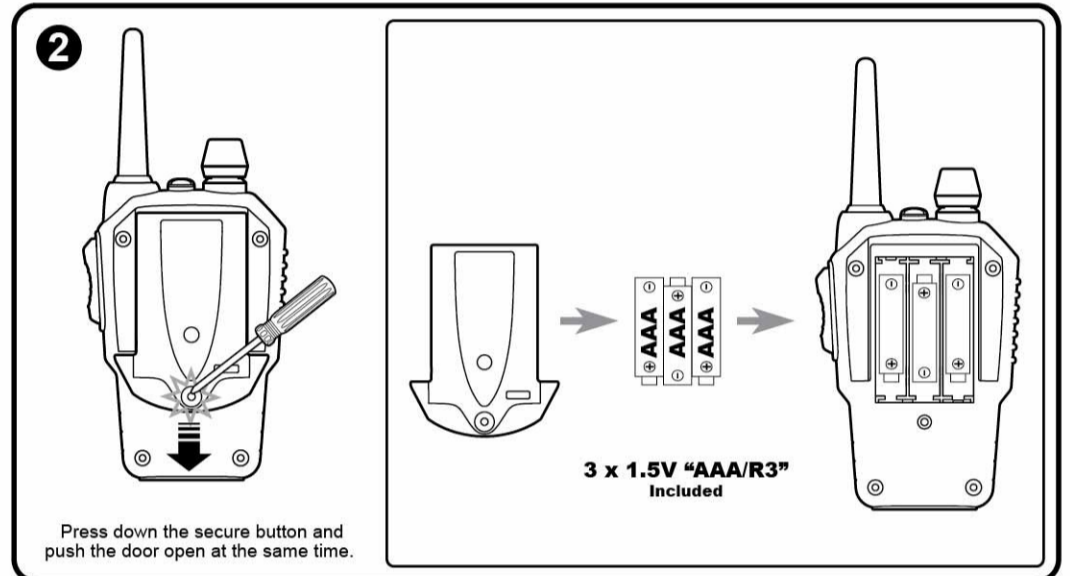
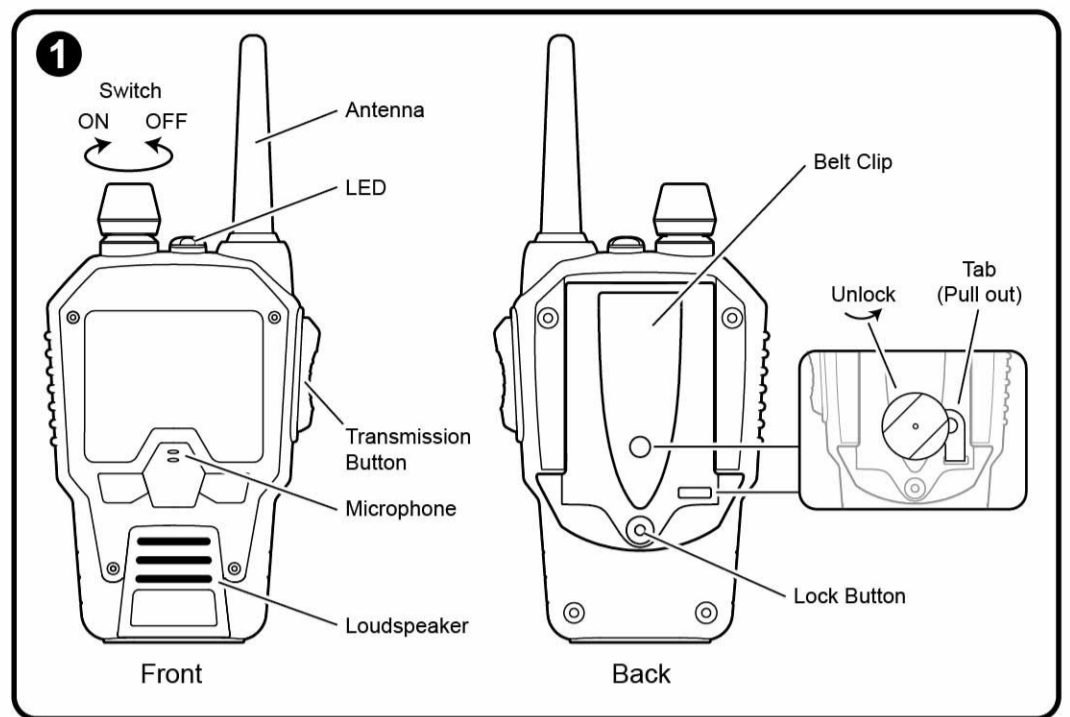
Note:
All controls, adjustments and switches that's instructed in the manual or follow-up instruction provided by the manufacturer that may be operated or adjusted without resulting in a violation of FCC rules

Warning:
Any adjustment that could result in a violation of FCC rules and it's recommended that could be performed only by or under the immediate supervision and responsibility of a person certified as technically qualified to perform transmitter maintenance and repair duties in this radio service by an organization or committee representative of users of that service

CAUTION: Changes or modifications i.e. replacing any transmitter component (crystal, semiconductor, etc.) not expressly approved by the party responsible for compliance could void the user's authority to operate the product.

§ 95.591 Sales of FRS combination radios prohibited:
Effective September 30, 2019, no person shall sell or offer for sale hand-held portable radio equipment capable of operating under FRS and under any other licensed or licensed-by-rule radio services in CFR Title 47 Chapter I.

FCC SAR statement
This equipment complies with FCC radiation exposure limits set forth for an uncontrolled environment. End user must follow the specific operating instructions for satisfying RF exposure compliance. This transmitter must not be co-located or operating in conjunction with any other antenna or transmitter. The portable device is designed to meet the requirements for exposure to radio waves established by the Federal Communications Commission (USA). These requirements set a SAR limit of 1.6 W/kg averaged over one gram of tissue. The highest SAR value reported 0.007 W/kg under this standard during product certification for use when properly worn on the body and front of face with minimum distance 25mm.



HOW TO PLAY:
1. Turn both Walkie Talkies ON.
2. LED will stay on.
3. Press transmission button to talk, release to listen.

F31771-0VIN-ISH-EN03A P1/2

INSTRUCTIONS SHEET MUST BE RETAINED SINCE IT CONTAINS IMPORTANT INFORMATION.

These operating, installation, and safety instructions are integral parts of the product.

IMPORTANT:
Please read all "CONSUMER INFORMATION" before operating these Walkie Talkies.
ADULT SUPERVISION REQUIRED.

Note to Adults: to ensure that the child's play is both safe and fun, please review all operating instructions and safety tips in the CONSUMER INFORMATION section with your child.

--- CONSUMER INFORMATION ---

CONTENTS:
2 x Walkie Talkies
6 x "AAA" Batteries

SAFETY WARNING INFORMATION:

- Never use the Walkie Talkie while driving or during any supporting activities as it may lead to accidents causing injuries.
- Turn the Walkie Talkies off in an aircraft or any facility where posted notices restrict the use of radios or cellular telephones. Hospitals or health care facilities may be using equipment that is sensitive to RF energy.
- Never use the Walkie Talkie where personal medical devices such as pacemakers or hearing aids are in use.
- Turn the Walkie Talkie off immediately if there is any reason to suspect that interference is taking place.
- Never attempt to modify or in any way increase the output power of the Walkie Talkie as it may cause a violation of the technical regulations of Part 15 of FCC Rules.
- To prevent the surface of the Walkie Talkie from heating, please do not wet the electronic components.

EACH WALKIE TALKIE IS DESIGNED TO WORK WITH 3 AAA BATTERIES, BATTERIES ARE INCLUDED.

INSTALLING BATTERIES INTO WALKIE TALKIES (See Diagram 2)

- Each Walkie Talkie requires 3 (three) "AAA" batteries (included)
- Press down the secure button and push the battery compartment door open at the same time.
 - Remove the used batteries (if any).
 - Insert the 3 "AAA" batteries, with polarity (+/-) as shown inside battery compartment.
 - Replace the battery compartment door.

BATTERY SAFETY INFORMATION

- Do not mix alkaline, standard (carbon-zinc), or rechargeable batteries.
- Remove batteries if Walkie Talkie will not be used for a long period of time to prevent possible battery leakage.
- Dispose of batteries safely. Do not dispose of batteries (or products containing non-replaceable batteries) in fire, as batteries may explode or leak.
- Rechargeable batteries are to be removed from the toy before being charged.
- Rechargeable batteries are to be charged by adult only.
- Non-rechargeable batteries are not to be recharged.
- Different types of batteries or new and used batteries are not to be mixed.
- Batteries are to be inserted with the correct polarity.
- Exhausted batteries are to be removed from the toy.
- The supply terminals are not to be short-circuited.

QUICK TIPS

- When your Walkie Talkie lose function or performance. It's time for fresh batteries.
- This product achieves better performance using alkaline batteries.
- Speak directly into the microphone.
- Listen closely to the loudspeaker.
- Communication within 100 meter.
- Play in open spaces without obstacles.
- Stay away electrical wires, wall, larger building or CB radio.
- Don't touch the antenna.
- Walkie Talkie will go to sleep mode after 15 minutes if no operation. Turn ON/OFF switch to wake up.
- Under the environment with radio frequency interference, the sample may malfunction and will be resumed to normal after removal of the interference.

CLEANING INSTRUCTION

To clean, wipe excess dirt from toy. Wipe toy clean with damp cloth. Wipe dry. DO NOT IMMERSIVE IN WATER and DO NOT CLEAN WALKIE TALKIE WITH ANY CHEMICALS. Let the toy completely dry before playing.

INSTRUCTION FOR DISPOSAL OF WASTE

- Your batteries and electronic toys should be recycled or disposed per your local waste management guidelines.
- Contact your local waste management officials for information regarding the environmentally sound recycling and disposal of batteries and electronic toys.

FEATURES:

- 462.5875 MHz technology
- Up to 100 meter control distance
- Group communication
- Belt clip

TROUBLE SHOOTING

PROBLEM	SOLUTION
Walkie Talkie will not START	1. Power switch is off. Make sure to turn it on. 2. Batteries are installed with incorrect polarities. Check the + and - markings to make sure the batteries are properly aligned. 3. Batteries are drained, install new batteries. 4. Pull out the battery tab.
Walkie Talkie does not respond.	1. Battery is drained. Replace the battery. 2. Both Walkie Talkie are out of range. Bring them closer. 3. Interference from surrounding electrical machinery. Bring to a wide open space.
Walkie Talkie does not respond properly	Major reason is out of range. Bring both Walkie Talkie closer. If problem still happen, replace with new batteries and restart (ON/OFF) the Walkie Talkie.

ISED compliance statement

This device contains licence-exempt transmitter(s)/receiver(s) that comply with Innovation, Science and Economic Development Canada's licence-exempt RSS(s). Operation is subject to the following two conditions:

- This device may not cause interference.
- This device must accept any interference, including interference that may cause undesired operation of the device.

L'émetteur/récepteur exempt de licence contenu dans le présent appareil est conforme aux CNR d'Innovation, Sciences et Développement économique Canada applicables aux appareils radio exempts de licence. L'exploitation est autorisée aux deux conditions suivantes :

- L'appareil ne doit pas produire de brouillage;
- L'appareil doit accepter tout brouillage radioélectrique subi, même si le brouillage est susceptible d'en compromettre le fonctionnement.

IC SAR statement

This equipment complies with ISED radiation exposure limits set forth for an uncontrolled environment. End user must follow the specific operating instructions for satisfying RF exposure compliance. This transmitter must not be co-located or operating in conjunction with any other antenna or transmitter.

The portable device is designed to meet the requirements for exposure to radio waves established by the ISED. These requirements set a SAR limit of 0.007 W/kg averaged over one gram of tissue. The highest SAR value reported under this standard during product certification for use when properly worn on the body and front of face with minimum distance 25mm.

Cet équipement est conforme aux limites d'exposition aux rayonnements ISED établies pour un environnement non contrôlé. L'utilisateur final doit suivre les instructions spécifiques pour satisfaire les normes. Cet émetteur ne doit pas être co-implanté ou fonctionner en conjonction avec toute autre antenne ou transmetteur.

L'exposition aux ondes radio spécifiées dans l'ised. Ces exigences fixent une limite moyenne de SAR de 0.007 W / kg pour un gramme de tissu. Les valeurs maximales de R - S spécifiées dans la présente norme sont déclarées lors de la certification du produit pour être utilisées lorsqu'elles sont portées correctement sur les faces avant du corps et du visage, à une distance minimale de 25 mm.



Electrical products should not be disposed of with household waste. Please recycle where facilities exist. Check with your local authority or retailer for recycling advice. Products with batteries should not be disposed of with household waste. Please recycle where facilities exist. Check with your local authority or retailer for recycling advice.

The product uses 462.5875 MHz technology.



We reserve the right to improve or amend product specifications. Colors may vary. Jada oval mark is a registered trademark of Jada Toys, Inc.

©2021 JADA TOYS, INC. CITY OF INDUSTRY, CA 91748, USA

MADE IN VIETNAM

F31771-0VIN-ISH-EN03A P2/2