

INTERTEK TESTING SERVICES

hp

Pursuant to FCC Part 15 Section 15.227 Emissions Requirement

MKR 134.4 KHZ

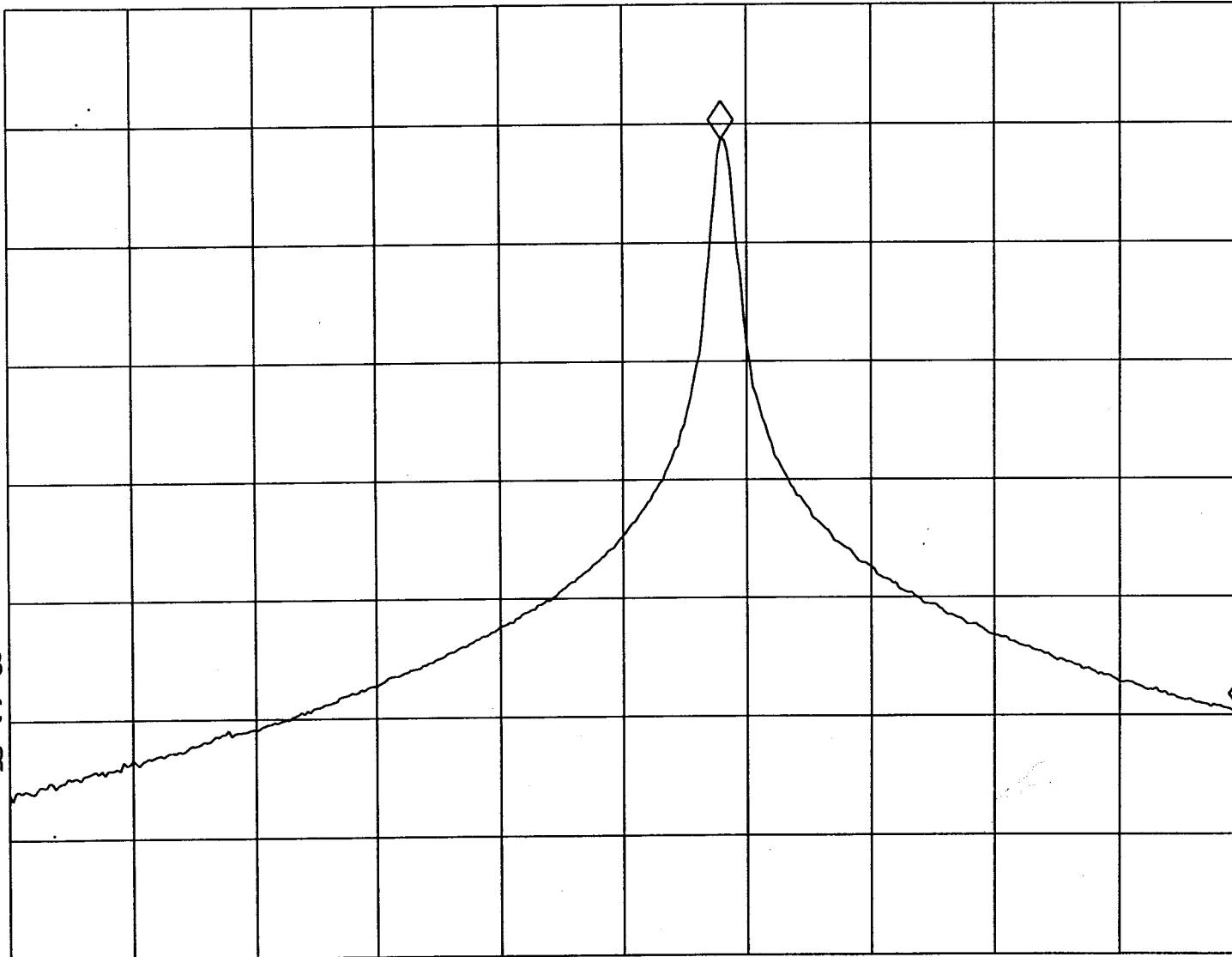
Report No.: 0414144
Model No.: # 83607

REF -10.0 dBm

AT 10 dB

-48.59 dB

PEAK
LOG
10
dB/



VA SB
SC FC
CORR

Tested By: *[Signature]*
(Gary Li)

Date: 26-7-04

Checked By: *[Signature]*
(Anthony Chan)

Date: 27/7/04

Test Result: Pass / Fail / NA

START 26.9600 MHz

#RES BW 3.0 KHZ

VBW 3 KHZ

STOP 27.2800 MHz

#SWP 1.00 sec