

FAST FURIOUS	Art Dept Approved	Signature	Date of Approval
Description: RC Instruction Sheet	Engineer Approved		
Scale: 1:24	QA Engineer Approved		
Material Code:	Remarks:		
Date: Sep 17, 2020			
Prepared By: eddy			

Hero Patrol - Walkie Talkie_EN

Size: A4

Front 1C + Back 1C



WARNING:
CHOKING HAZARD-Small parts.
Not for children under 3 years.

Important! Problems?



For customer support
Please contact us at:

**cs@jadatoys.com or
1-800-679-5232**

Between the hours of 9:00 am to 6:00 pm :
Pacific Time : Monday – Friday

WWW.JADATOYSINC.COM

U.S.A & Canada 30-Day Limited Warranty Jada Toys Products

Jada Toys, Inc. warrants to the original consumer purchaser that this product will be free of defects in material and workmanship for thirty (30) days from the date of purchase. Jada Toys will repair or replace the product, at our sole discretion, in the event of such a defect within the warranty period.

In the event of a defect covered under this warranty, first call the phone numbers listed below. Many problems can be solved in this manner. If necessary, you may be asked to return the product for a replacement or refund at the place of purchase (please refer to the retailers return policy) or you may be instructed to return the product (postage paid and insured by the consumer) to the address below. Include your name, address, telephone number, copy of dated sales receipt, and a brief explanation of the defect. Repair / replacement and return shipment will be free of charge. Please return the defective part or unit, packed securely. This warranty does not cover damage resulting from unauthorized modification, accident, misuse or abuse. If the product is returned without a dated sales receipt, the product may be excluded from coverage under this warranty.

Jada Toys' liability for defects in material and workmanship under this warranty shall be limited to repair or replacement, at our sole discretion, and in no event shall we be responsible for incidental, consequential, or contingent damages (except in those states that do not allow this exclusion or limitation). This warranty is exclusive, and is made in lieu of any express or implied warranty. Valid only in U.S.A. and Canada. This warranty gives you specific legal rights and you may have other rights, which may vary from state to state. Some states do not allow the exclusion of incidental or consequential damages, so the above exclusions or limitations may not apply to you.

TOLL-FREE NUMBER: 1-800-679-JADA (5232)
(valid only in U.S.A. and Canada)

Hours: 9:00 A.M. – 6:00 P.M. Pacific Time, Monday – Friday.
Expect some delay in January following the holiday season.
Please be patient and keep trying the toll-free number.

Address for Returns:
Consumer Relations, Jada Toys, Inc.
938 Hatcher Ave.
City of Industry, CA 91748, USA

Industry Canada Warning:

This device complies with Industry Canada licence-exempt RSS standard(s). Operation is subject to the following two conditions: (1) this device may not cause interference, and (2) this device must accept any interference, including interference that may cause undesired operation of the device. Under Industry Canada regulations, this radio transmitter may only operate using an antenna of a type and maximum (or lesser) gain approved for the transmitter by Industry Canada. To reduce potential radio interference to other users, the antenna type and its gain should be so chosen that the equivalent isotropically radiated power (e.i.r.p.) is not more than that necessary for successful communication.

FCC WARNING:

This device complies with part 15 of the FCC Rules. Operation is subject to the following two conditions:

- (1) This device may not cause harmful interference, and
- (2) this device must accept any interference received, including interference that may cause undesired operation.

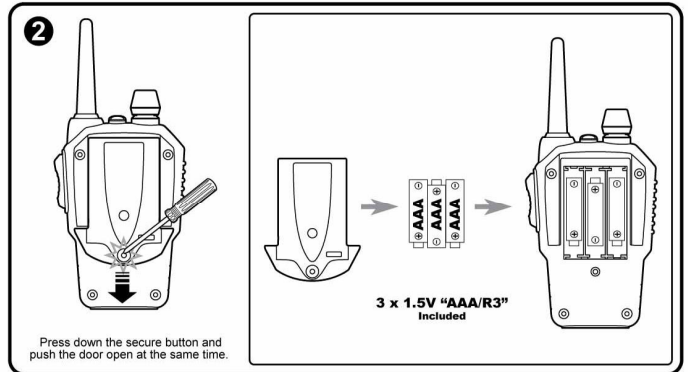
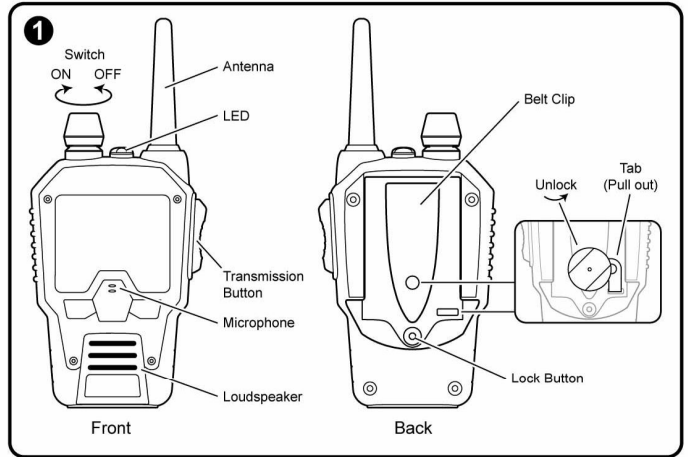
Warning:

Any changes or modifications not expressly approved by the party responsible for compliance could void the user's authority to operate this equipment.

NOTE:

This equipment has been tested and found to comply with the limits for a Class B digital device, pursuant to Part 15 of the FCC Rules. These limits are designed to provide reasonable protection against harmful interference in a residential installation. This equipment generates, uses and can radiate radio frequency energy and, if not installed and used in accordance with the instructions, may cause harmful interference to radio communications. However, there is no guarantee that interference will not occur in a particular installation. If this equipment does cause harmful interference to radio or television reception, which can be determined by turning the equipment off and on, the user is encouraged to try to correct the interference by one or more of the following measures:

- Reorient or relocate the receiving antenna.
- Increase the separation between the equipment and receiver.
- Connect the equipment into an outlet on a circuit different from that to which the receiver is connected.
- Consult an experienced radio/TV technician for help.



HOW TO PLAY:

1. Turn both Walkie Talkies ON.
2. LED will stay on with beep sounds.
3. Press transmission button to talk, release to listen.

F31771-0VIN-ISH-EN01A P1/2

INSTRUCTIONS SHEET MUST BE RETAINED SINCE IT CONTAINS IMPORTANT INFORMATION.

These operating, installation, and safety instructions are integral parts of the product.

IMPORTANT:

Please read all "CONSUMER INFORMATION" before operating these Walkie Talkies.
ADULT SUPERVISION REQUIRED.

Note to Adults: to ensure that the child's play is both safe and fun, please review all operating instructions and safety tips in the CONSUMER INFORMATION section with your child.

--- CONSUMER INFORMATION ---

CONTENTS:

- 2 x Walkie Talkies
- 6 x "AAA" Batteries

SAFETY WARNING INFORMATION:

- Never use the Walkie Talkie while driving or during any supporting activities as it may lead to accidents causing injuries.
- Turn the Walkie Talkie off in an aircraft or any facility where posted notices restrict the use of radios or cellular telephones. Hospitals or health care facilities may be using equipment that is sensitive to RF energy.
- Never use the Walkie Talkie where personal medical devices such as pacemakers or hearing aids are in use.
- Turn the Walkie Talkie off immediately if there is any reason to suspect that interference is taking place.
- Never attempt to modify or in any way increase the output power of the Walkie Talkie as it may cause a violation of the technical regulations of Part 15 of FCC Rules.
- To prevent the surface of the Walkie Talkie from heating, please do not wet the electronic components.

EACH WALKIE TALKIE IS DESIGNED TO WORK WITH 3 AAA BATTERIES, BATTERIES ARE INCLUDED.

INSTALLING BATTERIES INTO WALKIE TALKIE (See Diagram 2)

- Each Walkie Talkie requires 3 (three) "AAA" batteries (included).
- 1. Press down the secure button and push the battery compartment door open at the same time.
- 2. Remove the used batteries (if any).
- 3. Insert the 3 "AAA" batteries, with polarity (+/-) as shown inside battery compartment.
- 4. Replace the battery compartment door.

BATTERY SAFETY INFORMATION

- Do not mix alkaline, standard (carbon-zinc), or rechargeable batteries.
- Remove batteries if Walkie Talkie will not be used for a long period of time to prevent possible battery leakage.
- Dispose of batteries safely. Do not dispose of batteries (or products containing non-replaceable batteries) in fire, as batteries may explode or leak.
- Rechargeable batteries are to be removed from the toy before being charged.
- Rechargeable batteries are to be charged by adult only.
- Non-rechargeable batteries are not to be recharged.
- Different types of batteries or new and used batteries are not to be mixed.
- Batteries are to be inserted with the correct polarity.
- Exhausted batteries are to be removed from the toy.
- The supply terminals are not to be short-circuited.

QUICK TIPS

- When your Walkie Talkie lose function or performance. It's time for fresh batteries.
- This product achieves better performance using alkaline batteries.
- Speak directly into the microphone.
- Listen closely to the loudspeaker.
- Communication within 100 meter.
- Play in open spaces without obstacles.
- Stay away electrical wires, wall, larger building or CB radio.
- Don't touch the antenna.
- Walkie Talkie will go to sleep mode after 15 minutes if no operation. Turn ON/OFF switch to wake up.
- Under the environment with radio frequency interference, the sample may malfunction and will be resumed to normal after removal of the interference.

CLEANING INSTRUCTION

To clean, wipe excess dirt from toy. Wipe toy clean with damp cloth. Wipe dry. DO NOT IMMERSIVE IN WATER and DO NOT CLEAN WALKIE TALKIE WITH ANY CHEMICALS. Let the toy completely dry before playing.

INSTRUCTION FOR DISPOSAL OF WASTE

- Your batteries and electronic toys should be recycled or disposed per your local waste management guidelines.
- Contact your local waste management officials for information regarding the environmentally sound recycling and disposal of batteries and electronic toys.

FEATURES:

- 2.4GHZ technology
- Up to 100 meter control distance
- Group communication
- Belt clip

TROUBLE SHOOTING

PROBLEM	SOLUTION
Walkie Talkie will not START	<ol style="list-style-type: none"> 1. Power switch is off. Make sure to turn it on. 2. Batteries are installed with incorrect polarities. Check the + and - markings to make sure the batteries are properly aligned. 3. Batteries are drained, install new batteries. 4. Pull out the battery tab.
Walkie Talkie does not respond.	<ol style="list-style-type: none"> 1. Battery is drained. Replace the battery. 2. Both Walkie Talkie are out of range. Bring them closer. 3. Interference from surrounding electrical machinery. Bring to a wide open space.
Walkie Talkie does not respond properly	<ol style="list-style-type: none"> Major reason is out of range. Bring both Walkie Talkie closer. If problem still happen, replace with new batteries and restart (ON/OFF) the Walkie Talkie.



Electrical products should not be disposed of with household waste. Please recycle where facilities exist. Check with your local authority or retailer for recycling advice. Products with batteries should not be disposed of with household waste. Please recycle where facilities exist. Check with your local authority or retailer for recycling advice.

The product uses 2.4GHz technology.



We reserve the right to improve or amend product specifications. Colors may vary. Jada oval mark is a registered trademark of Jada Toys, Inc.

©2020 JADA TOYS, INC. CITY OF INDUSTRY, CA 91748, USA

MADE IN VIETNAM

F31771-0VIN-ISH-EN01A P2/2