

BenQ



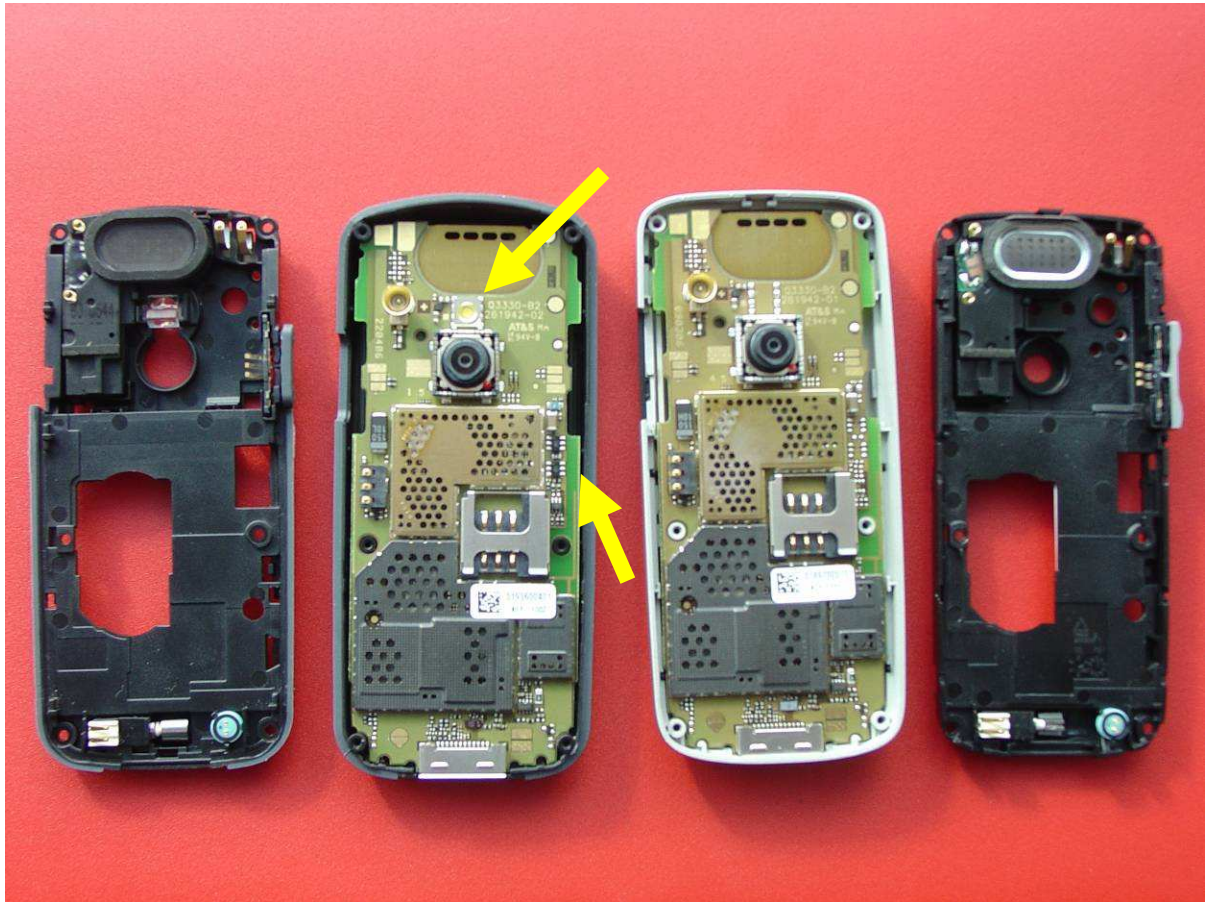
M81 grey/black phone on left side. C81 black phone on right side.

Mechanical outline is changed to a rubber finish. Torch flash LED on back side has been re-introduced in M81 (It was present in S75 – predecessor of C81).



M81 on left side. C81 on right side.

GSM antenna element is exactly the same. Torch / flash LED is visible between camera and antenna element. Battery lid is split in two parts (as on S75).



M81 on left side. C81 on right side.

PCB is exactly the same. Flash LED / torch plus driver circuit is populated in M81.



**M81 on left side. C81 on right side.
Front side of PCB is identical.**



1. Description of Schematic Changes from C81 to M81

Hardware Detection

Hardware detection is modified to detect M81 instead of C81.

R1041, R1044 = 100kohm

R1043, R1045 is not mounted.

Flash LED Circuit Mounted

The torch / LED flash feature re-introduced in M81. Based on this the following components are populated:

C4902 = 5n6F capacitor

C4904 = 18pF capacitor

C4905 = 18pF capacitor

R4900 = 2k7 ohm resistor

R4901 = 2k7 ohm resistor

R4902 = 100 kohm resistor

R4903 = 10 ohm resistor

R4904 = 56 ohm resistor

R4906 = 0 ohm resistor

R4907 = 11 ohm resistor

R4908 = 100 kohm resistor

R4909 = 2k7 ohm resistor

V4901 = transistor

V4902 = FLASH LED

V4903 = driver transistor

V4904 = driver transistor

Bluetooth Antenna Match

Bluetooth antenna element is printed on the PCB. Due to the different housing of the M81 resonance of the antenna element has shifted. In M81 no matching component are required. L5149 = 6n8H is removed. C5149 is changed from 0p82F capacitor to R5149 = 0 ohm resistor.

SAR-Connector

SAR-Connector X3823 (south part) is not mounted in M81



2. Changes on RF

Due to RF part is completely unaffected from changes, the CETECOM testreports EMC_BENQ0_009_06001_C81_Bluetooth (5/10/2006) and EMC_BENQ0_009_06001_C81_FCC24 are applicable further on.