



**PHOTOGRAPHS OF THE INTERIOR OF A
DIGITAL TRANSMISSION SYSTEM,
OPERATING IN THE BAND 2400 – 2483.5 MHz,
BRAND TRIMBLE, MODEL RC603.**

11122303.p01
May 07, 2012

FCC listed : 90828
Industry Canada : 2932G-1
VCCI Registered : R-1518, C-1598
R&TTE, LVD, EMC Notified Body : 1856

TÜV Rheinland EPS B.V.
Eiberkamp 10
9351VT Leek
The Netherlands

Telephone: +31 594 505005
Telefax: +31 594 504804
Internet: www.tuv.com/nl
E-mail: info@tuv-eps.com



Description of test item

Test item : Digital Transmission System
Manufacturer : Trimble Inc.
Brand : Trimble
Model(s) : RC603
Serial number(s) : --
Revision : n.a.
FCC ID : PWR-RC60X
IC : 4131A-RC60X

Applicant information

Applicant's representative : Mr. U. Ohler
Company : Trimble Germany GmbH
Address : Am Sportplatz 5
Postal code : 67661
City : Kaiserslautern
Country : Germany
Telephone number : +49 (0)6301 7114 52
Telefax number : +49 (0)6301 32213
e-mail address : info@trimble.com



Table of contents

1.1	INTERNAL VIEW 1, HOUSING OPENED UP	4
1.2	INTERNAL VIEW 2, PCB'S REMOVED FROM HOUSING.....	5
1.3	INNER ASSEMBLY.....	6
1.3.1	<i>Inner assembly, PCB's disassembled-PCB front view.....</i>	<i>6</i>
1.3.2	<i>Inner assembly, PCB view - rear side, with antenna.....</i>	<i>7</i>
1.4	INNER ASSEMBLY, PCB VIEW - XTAL, RF-CHIP AND ANTENNA DETAIL.....	8



1.1 Internal view 1, housing opened up





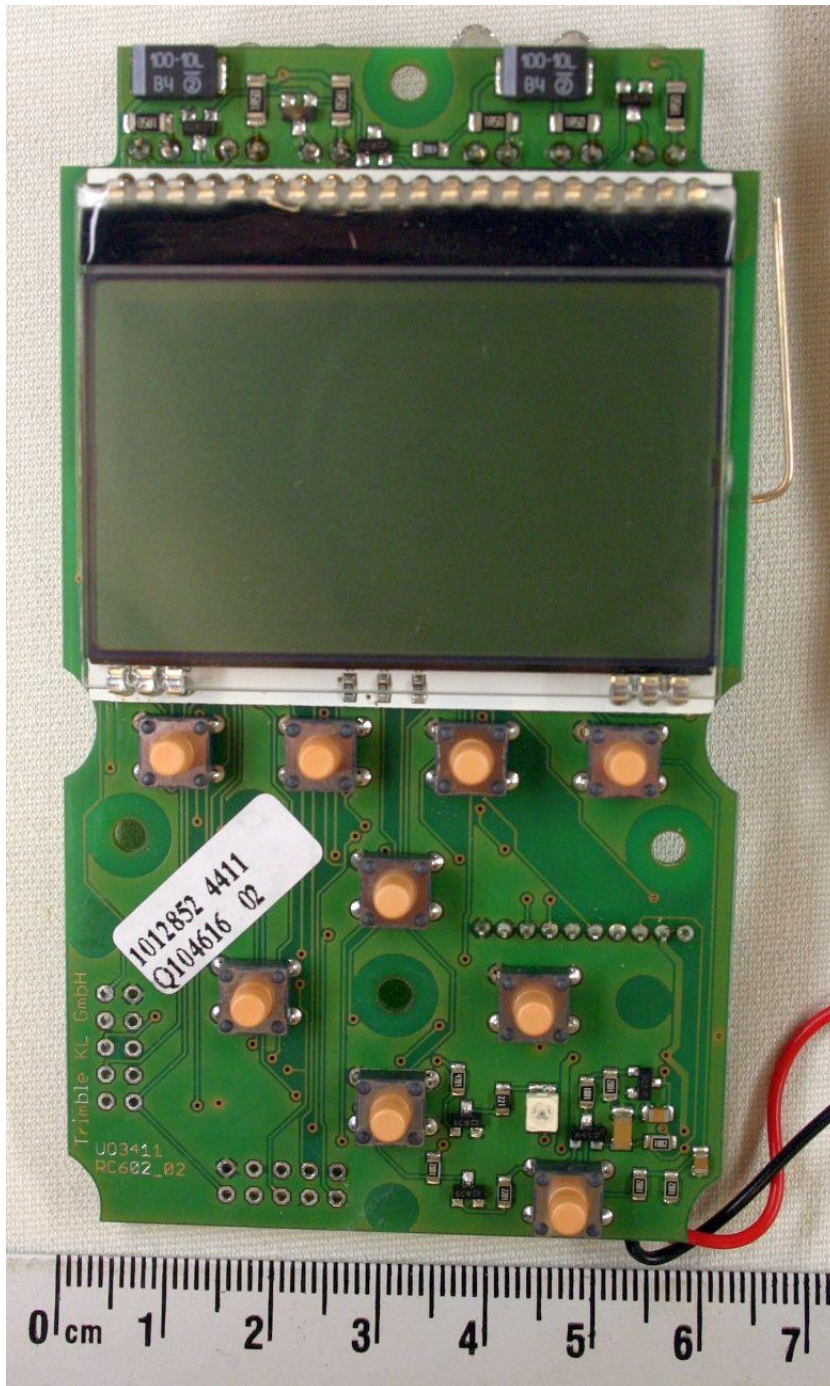
1.2 Internal view 2, PCB's removed from housing





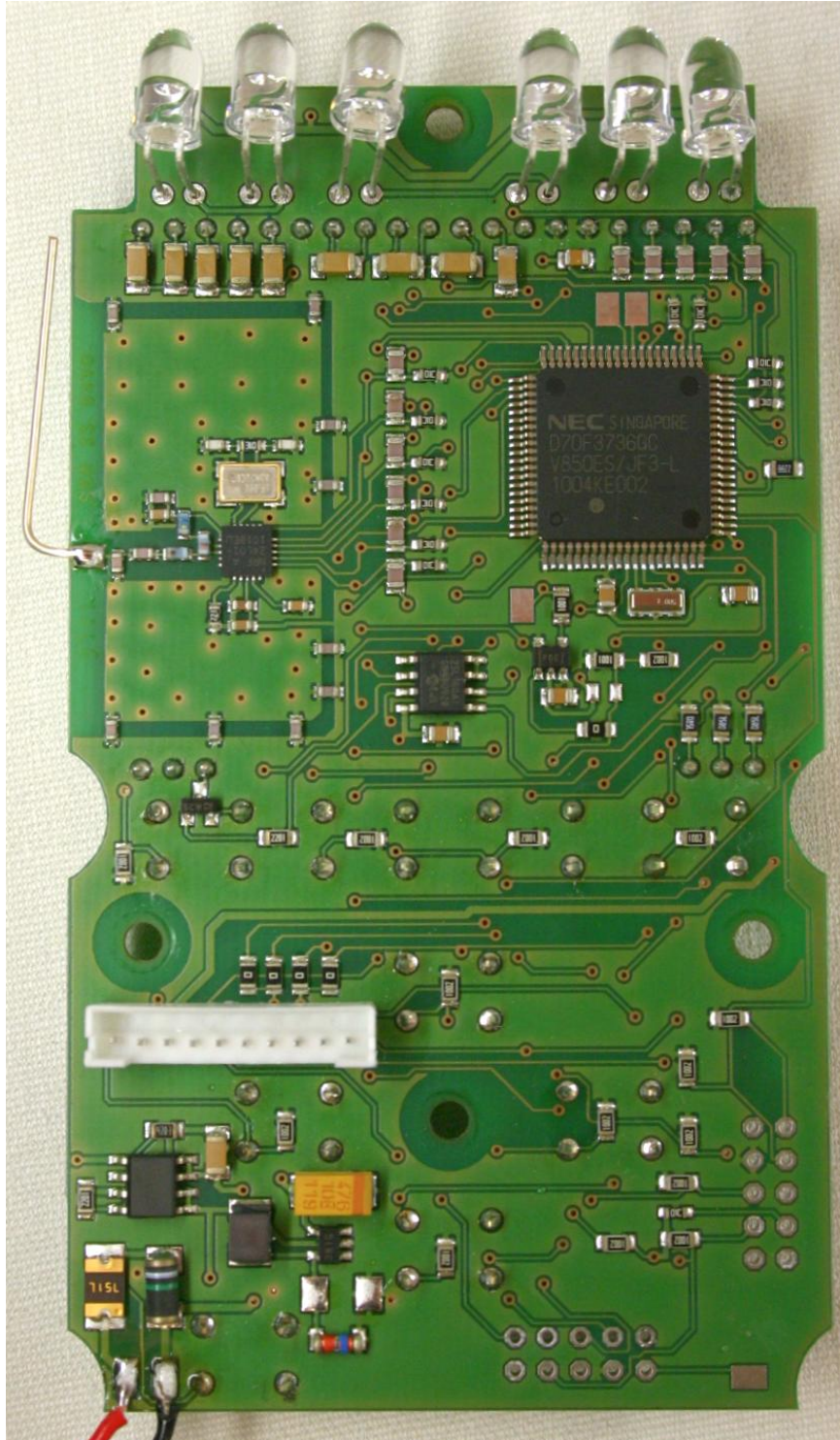
1.3 Inner assembly

1.3.1 Inner assembly, PCB's disassembled-PCB front view





1.3.2 Inner assembly, PCB view - rear side, with antenna





1.4 Inner assembly, PCB view - Xtal, RF-chip and Antenna detail

