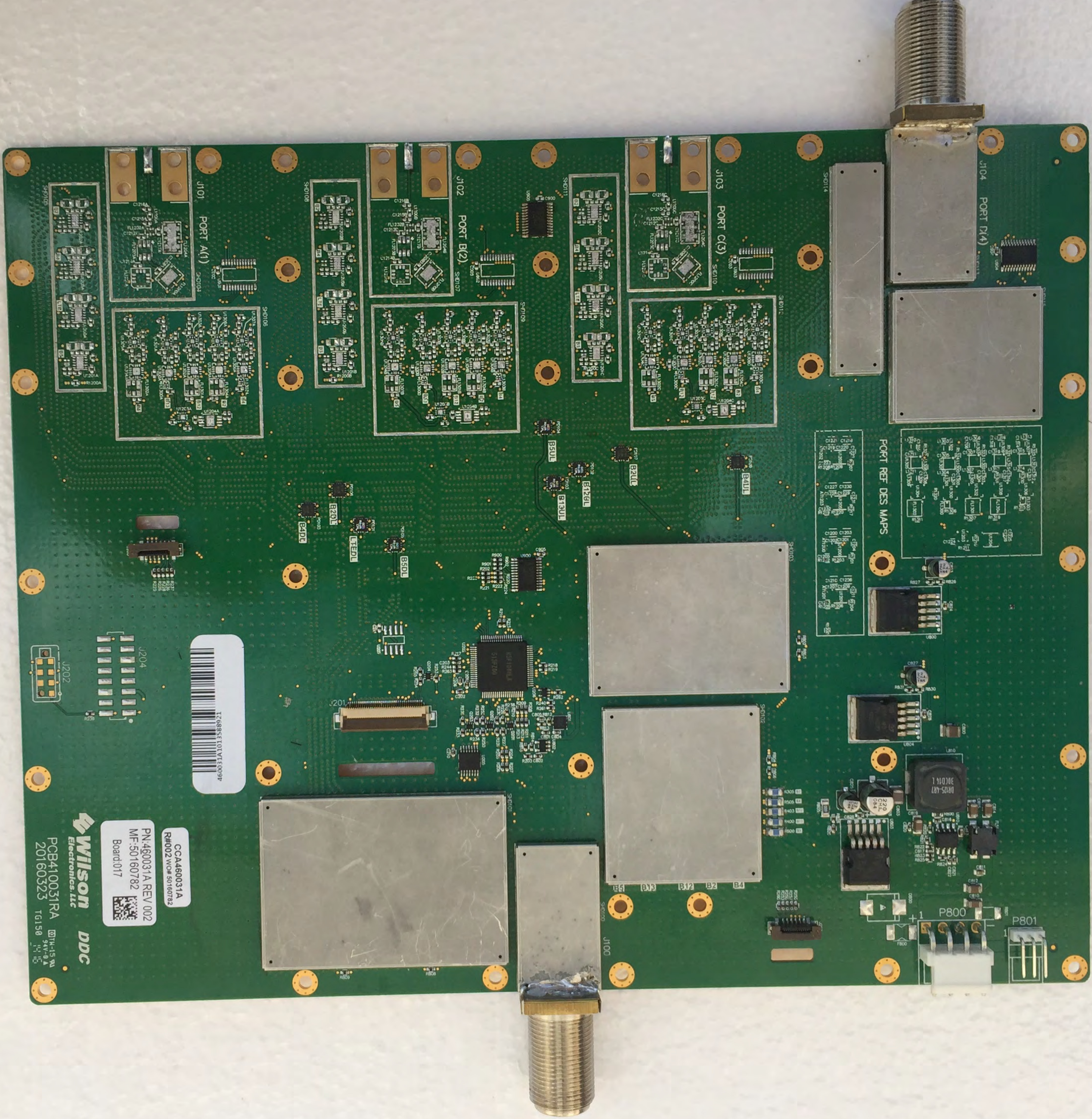


1Z6885E101VTE009P

CCA480031A  
R#002 W/C# 50760792  
PN:460031A REV.002  
MF:50160782  
Board:017

**Wilson**  
Electronics, LLC  
DDC  
PCB410031RA  
20160323 TG150

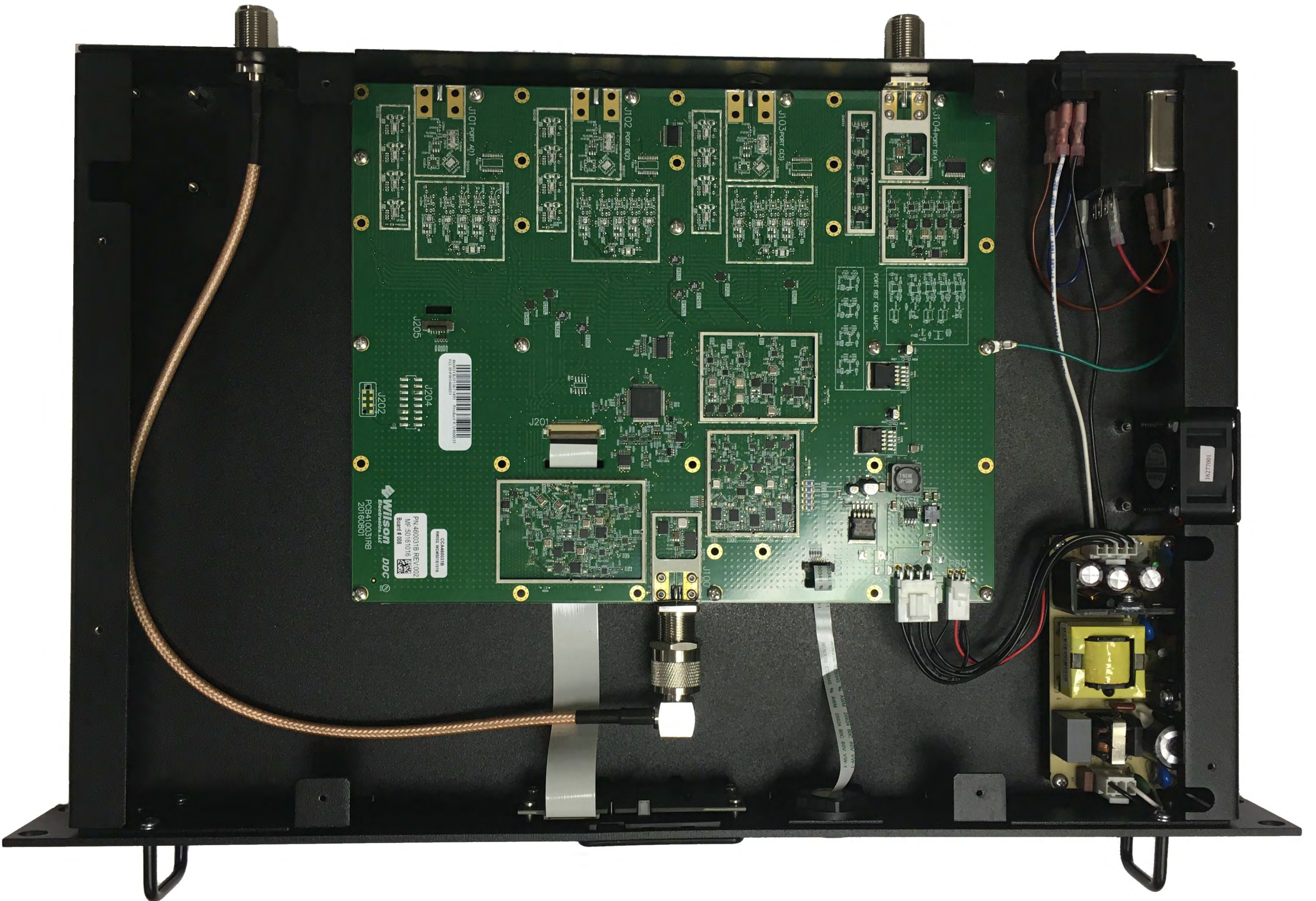


768883101VT609P

CCA460031A  
R#002 NCP# 60160782

PN:460031A REV:002  
MF:50160782  
Board:017

**Wilson** **DDC**  
Electronics, LLC  
PCB410031RA 341-45 8V  
20160323 TG150 11 10



Wilson  
d d c  
Electronics, LLC  
PCB410031RB  
20160801

PN: 460031B REV:002  
MF: 50161016  
Board # 008

CCA460031B  
MFG: WSP01616

104L1201

J205

J204

J202

J201

J100

J103 PORT (A3)

J102 PORT (A2)

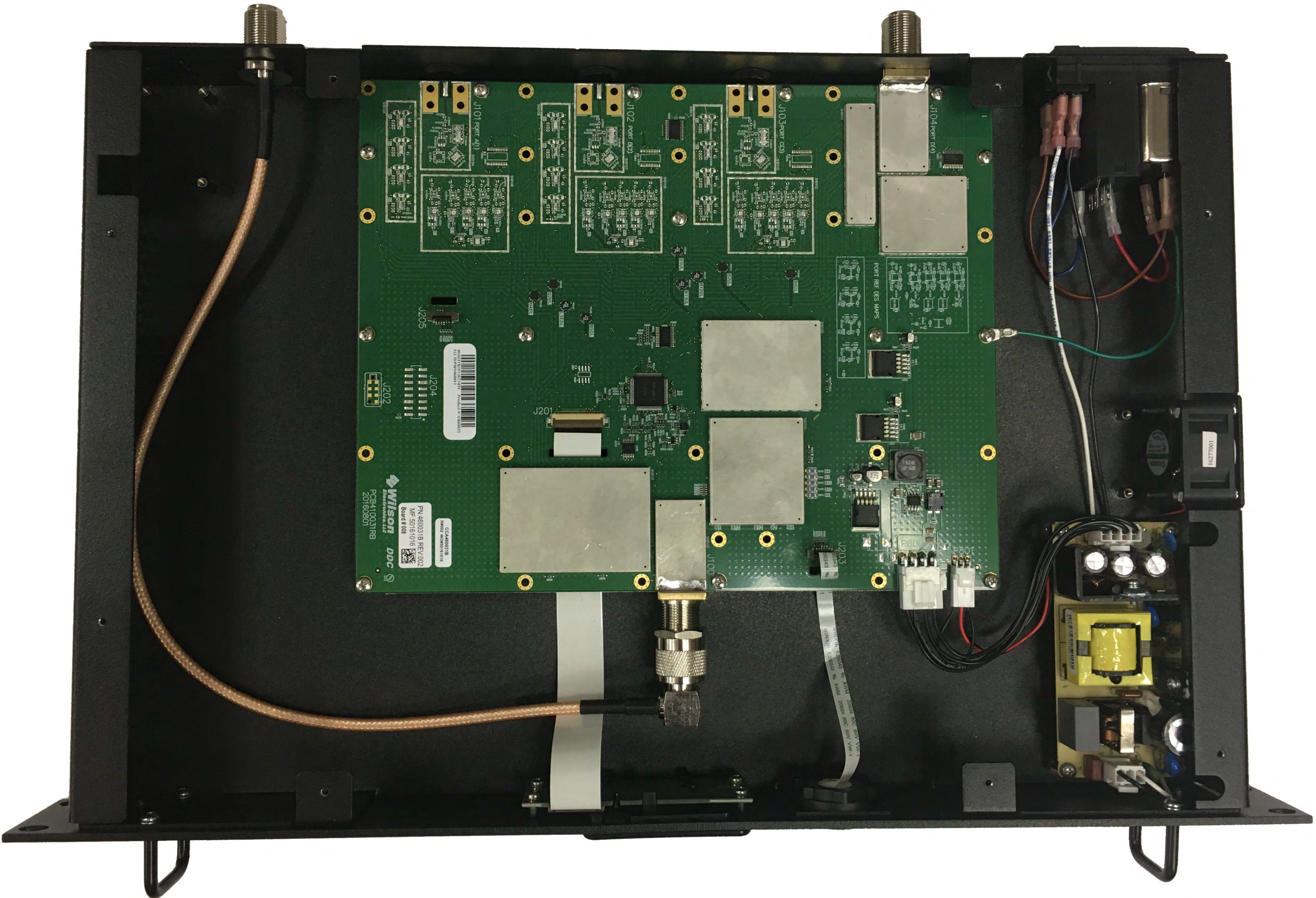
J101 PORT (A1)

J104 PORT (A4)

PORT REF DES MAPS

J100

DO NOT TOUCH THIS BOARD  
IF YOU ARE NOT A TRAINED TECHNICIAN  
DO NOT TOUCH THIS BOARD



PCB410031RB  
20160801  
Wilson DDC  
PN: 460031B REV: 002  
MF: 50161016  
Board # 008  
CCA460031B  
NMOZ: W460031B16

16277001  
16277001

WAVELENGTH RANGE: 1550-1625nm  
POWER: 200mW  
MODE: CW  
SERIAL: 16277001