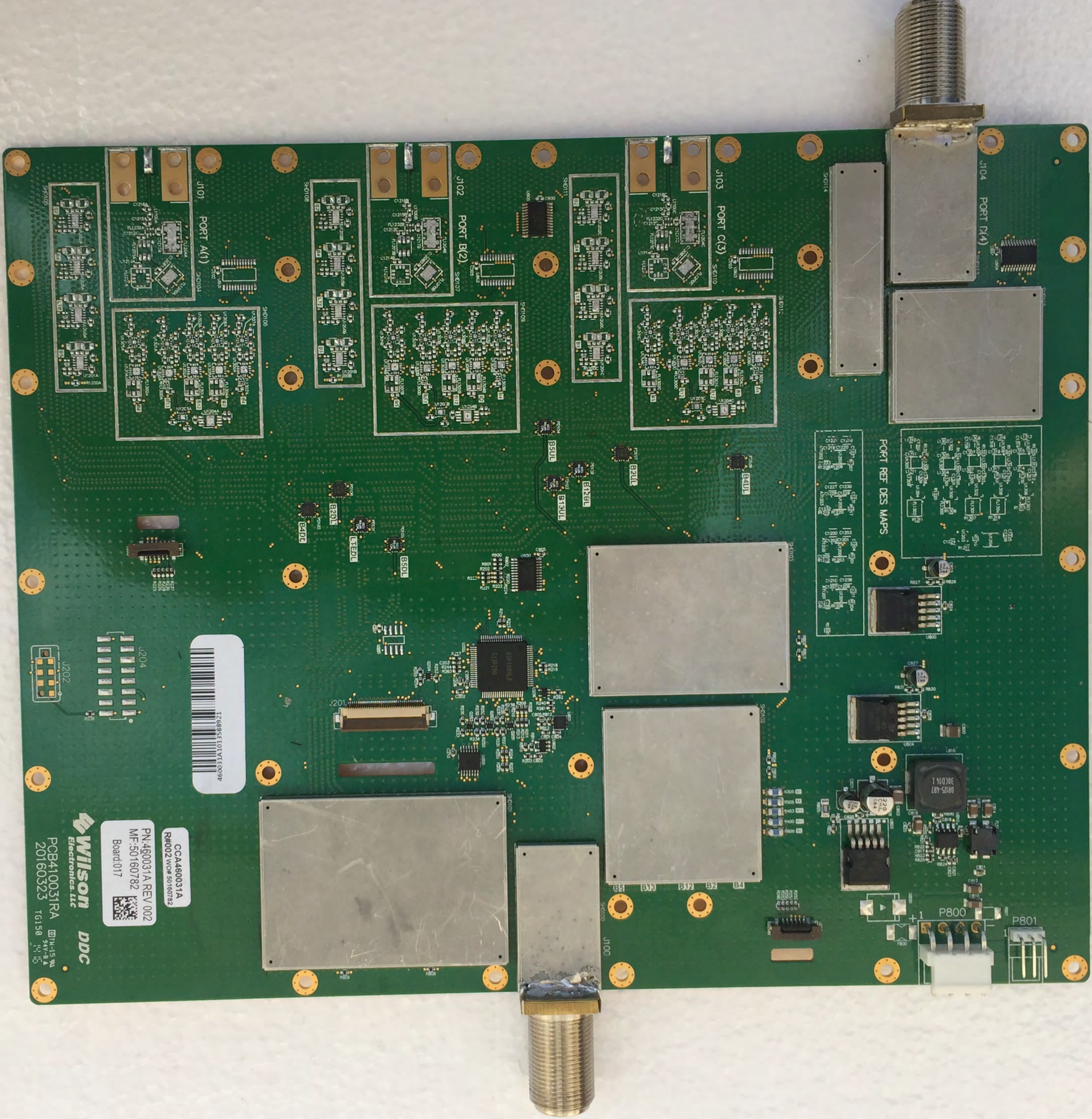


1Z6885E101VTE009P

CCA480031A
R#002 W/C# 50760792
PN:460031A REV.002
MF:50160782
Board:017

Wilson
Electronics, LLC
DDC
PCB410031RA
20160323 TG150



J104 PORT D(4)

J103 PORT C(3)

J102 PORT B(2)

J101 PORT A(1)

PORT REF DES MAPS

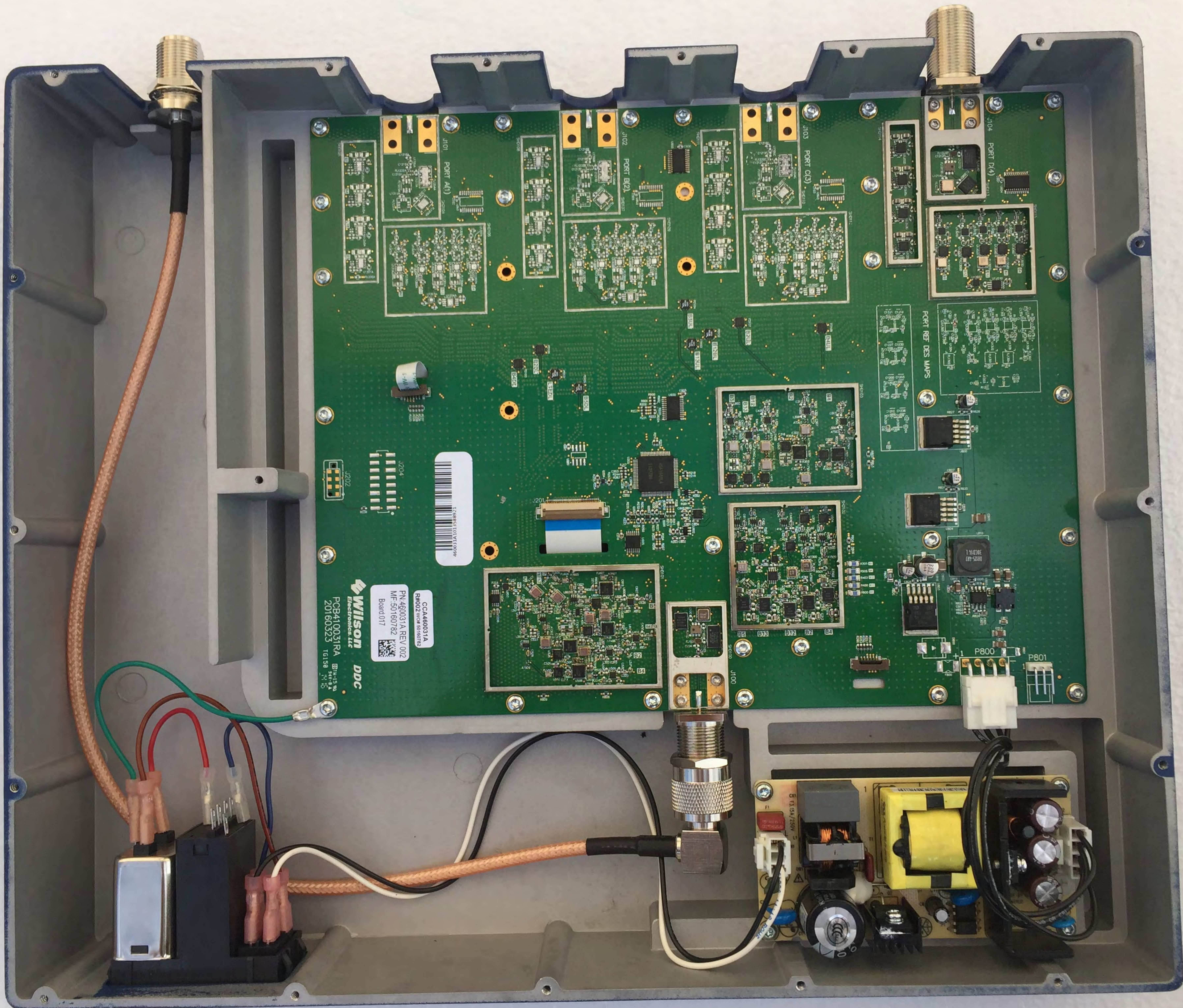


CCA460031A
R#002 NCP# 60160782



PN:460031A REV:002
MF:50160782
Board:017

Wilson **DDC**
Electronics, LLC
PCB410031RA 341-45 8V
20160323 TG150 11 10



72-68581-101-V17-00-96

CCA460031A
R460027-00-00-00-00
PU460031A REV.002
MF:50160782
Board:017

Wilson
Electronics, LLC

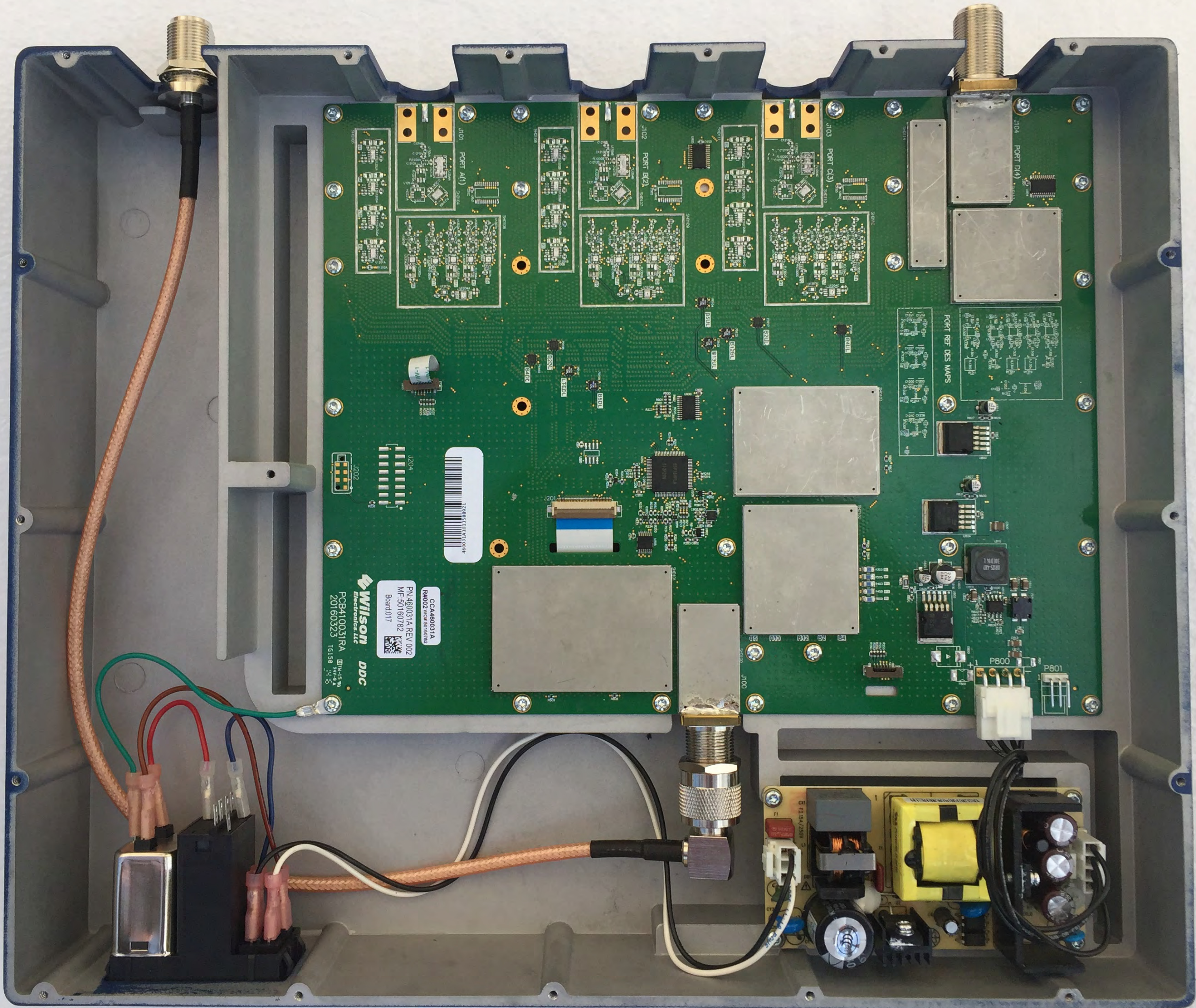
PCB410031RA 04-15-18
20160323 16198 1.1.15

PORT REF DES MAPS

P800

P801

5 13A/250V



CCA460031A
R4002 V04 50160782
PN:460031A REV:002
MF:50160782
Band:017

Wilson DDC
PCB410031RA
20160323 T6158

