

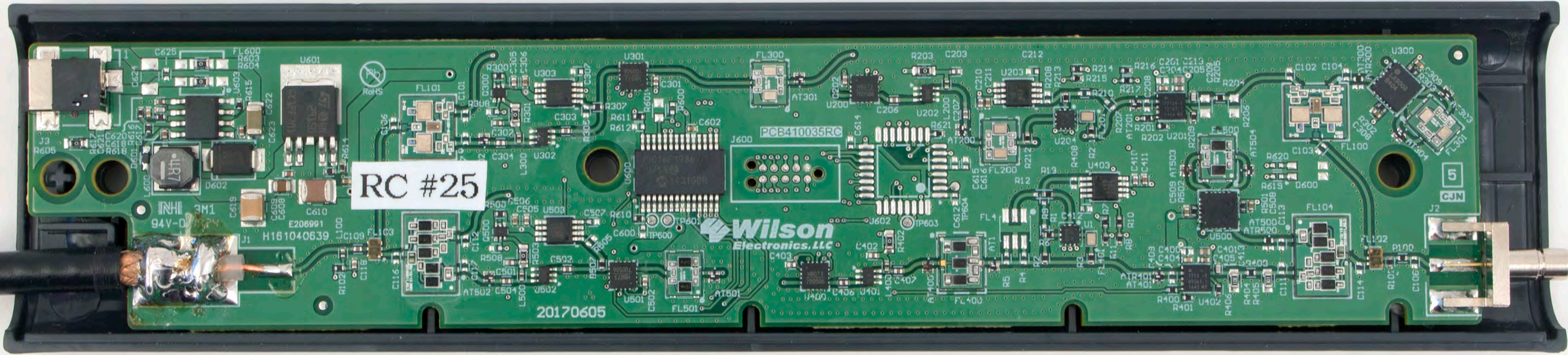
RC #25

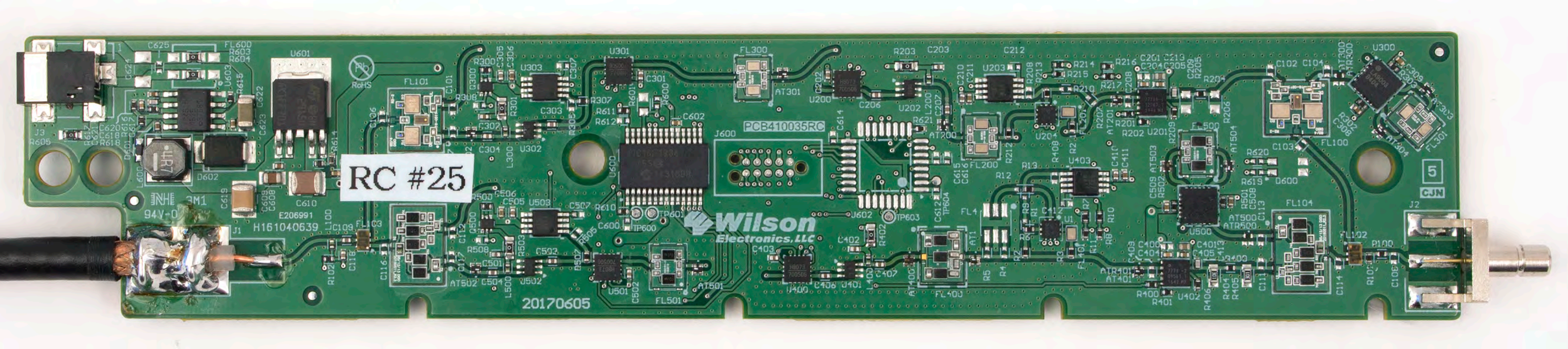
Wilson  
Electronics, LLC

PCB410035RC

20170605

5  
GUN





RC #25

Wilson  
Electronics, LLC

PCB410035RC

20170605

5  
CJN

94V-0



The PCB is densely packed with components. On the left side, there is a cable connector (J1) and a component labeled 'H161040639'. The top left corner features a multi-pin connector (J3) and several capacitors (C620-C625). The central area contains a large microcontroller chip (U600) and several memory chips (U200, U300, U400, U500). The right side has another multi-pin connector (J2) and several more memory chips (U201, U202, U203, U204). The board is populated with numerous resistors (R1-R600) and capacitors (C1-C625). The bottom edge has two circular mounting holes. The overall layout is complex and organized into functional blocks.

7352000025

460035C0213940211 Product #: U470035  
FCC ID: PW0460035 IC: 4726A-460035  
FCC requires to never use the cell phone  
in the cradle next to your ear. Model #460035