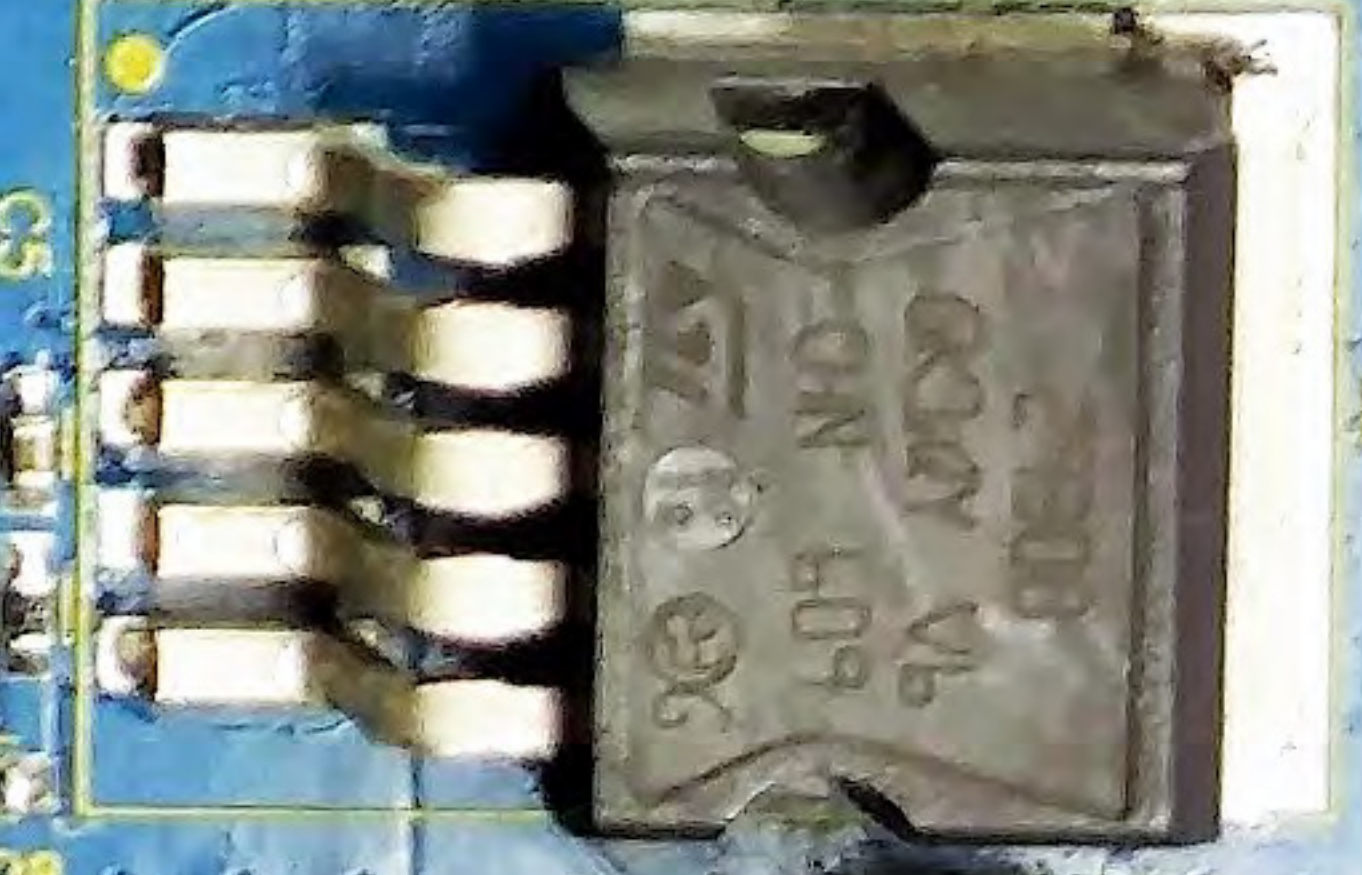
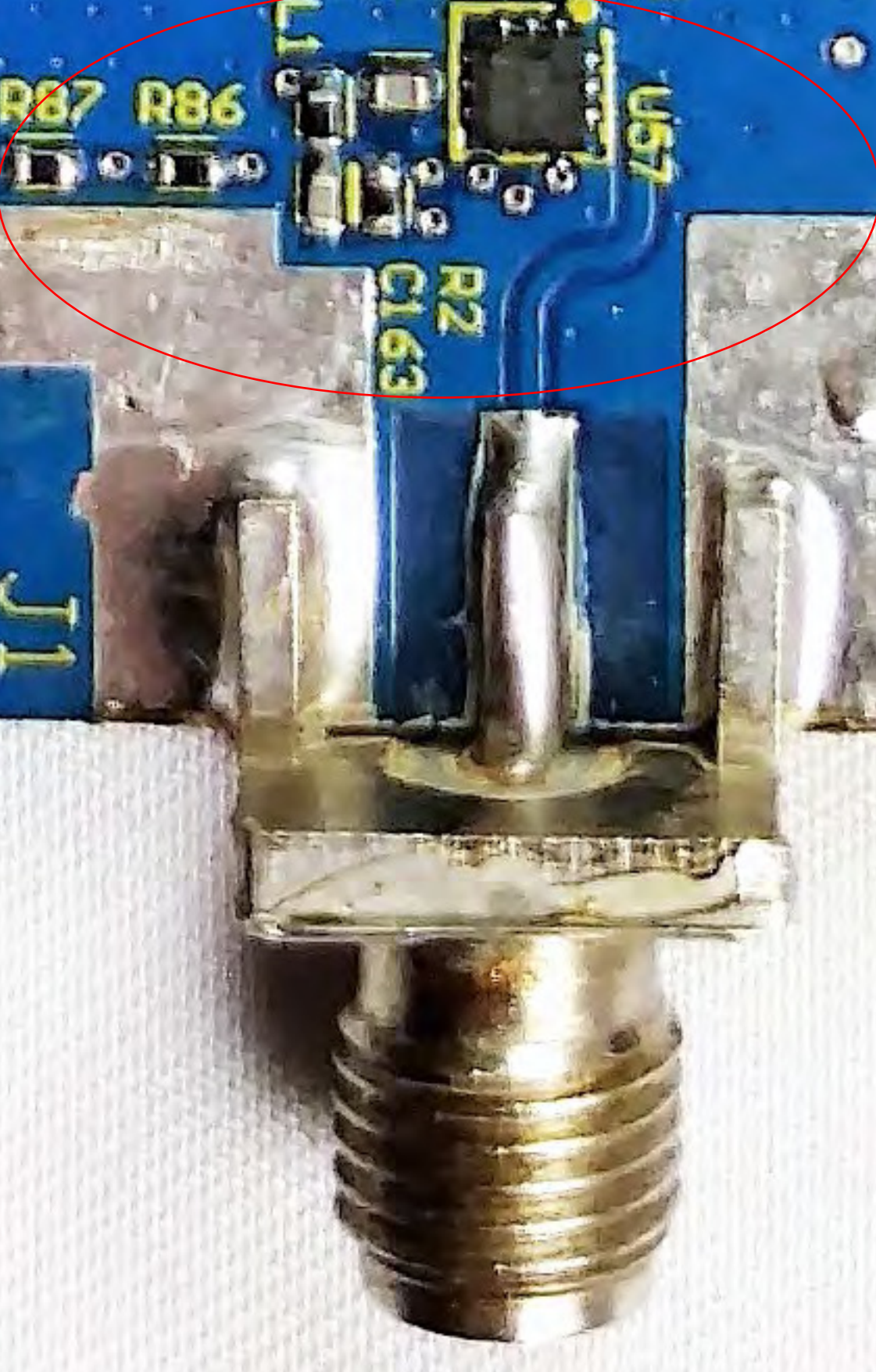
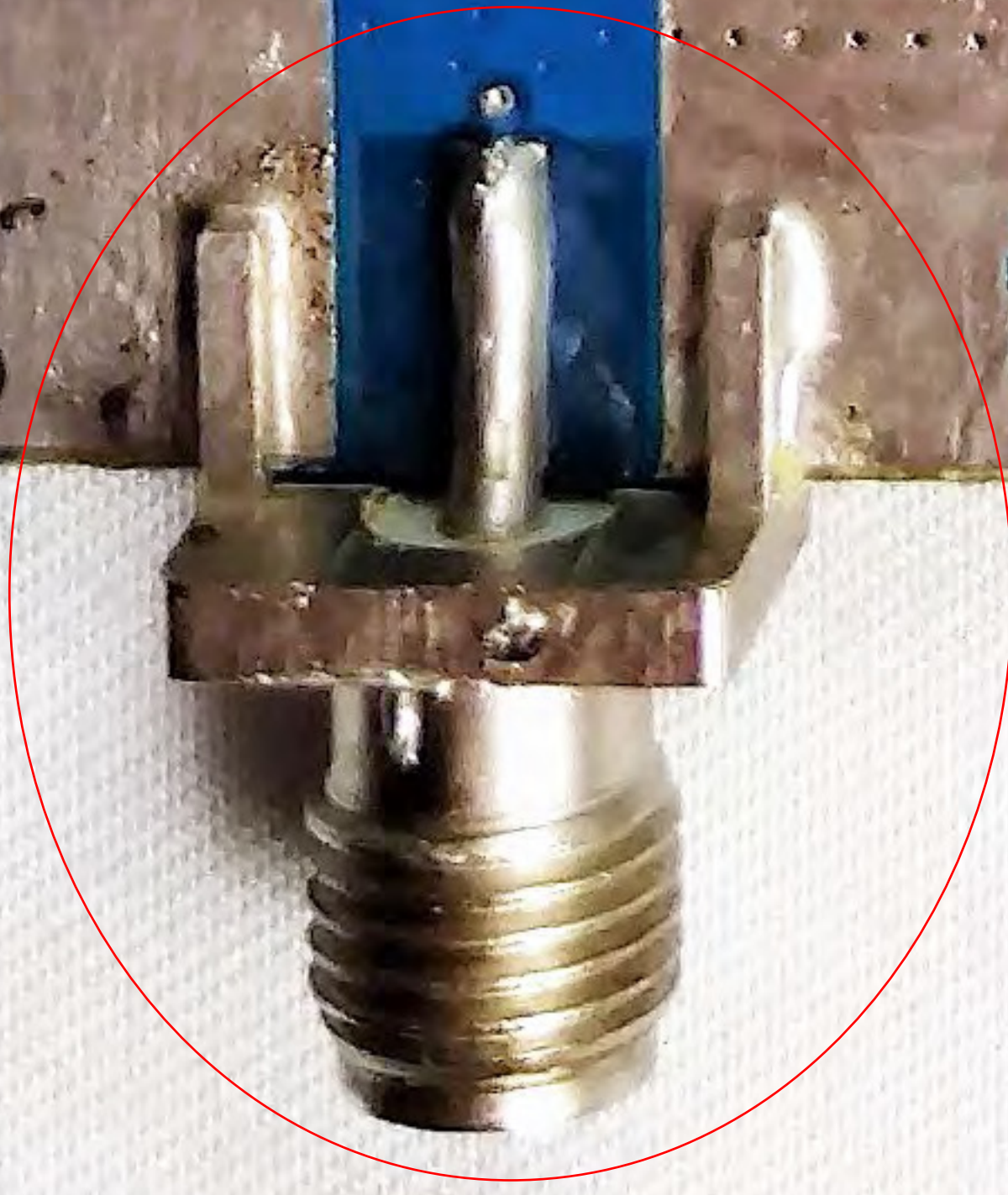


PCB463020RC 20160630

JCC/G1R

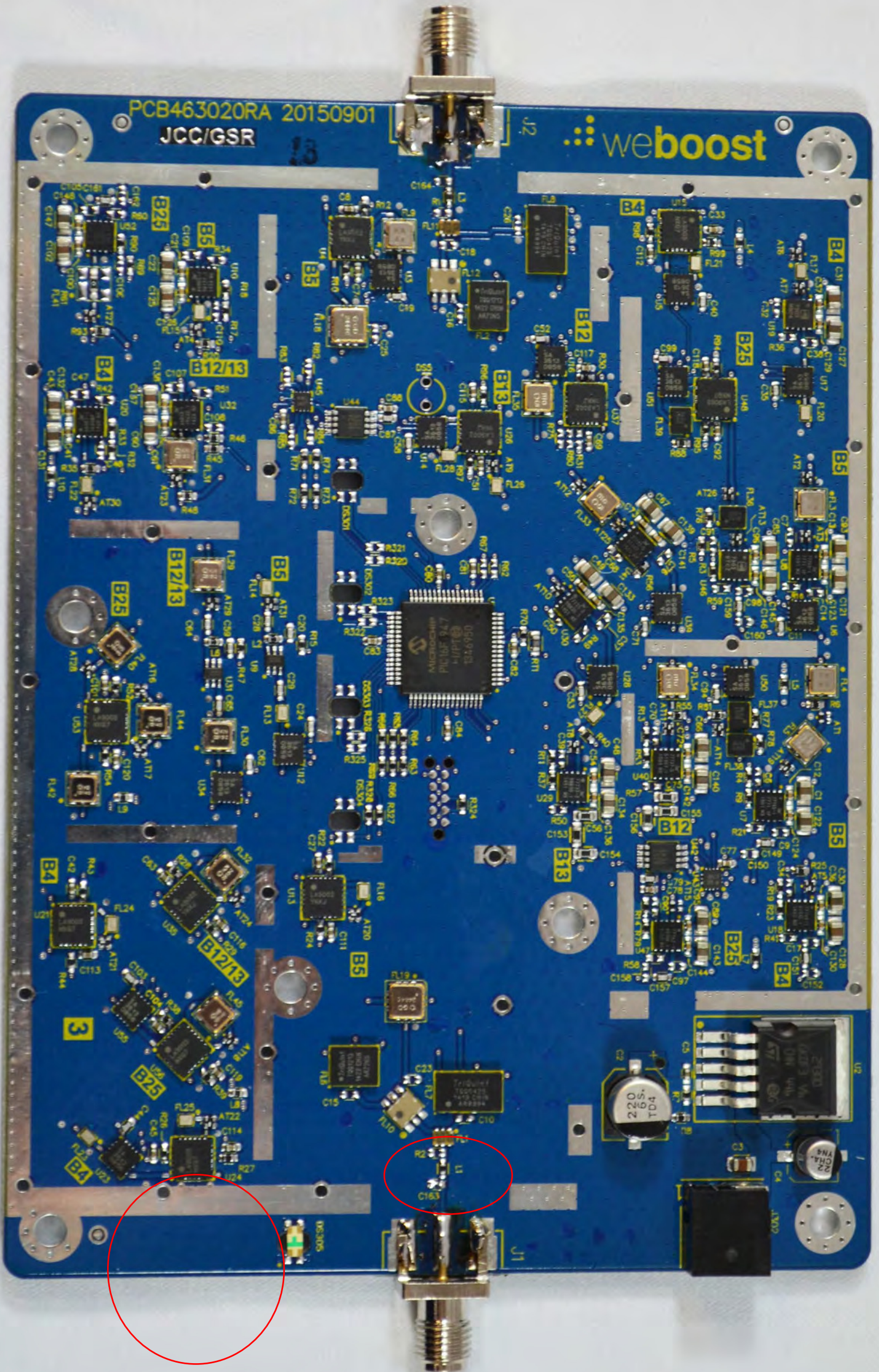
**Wilson**  
Electronics, Inc.

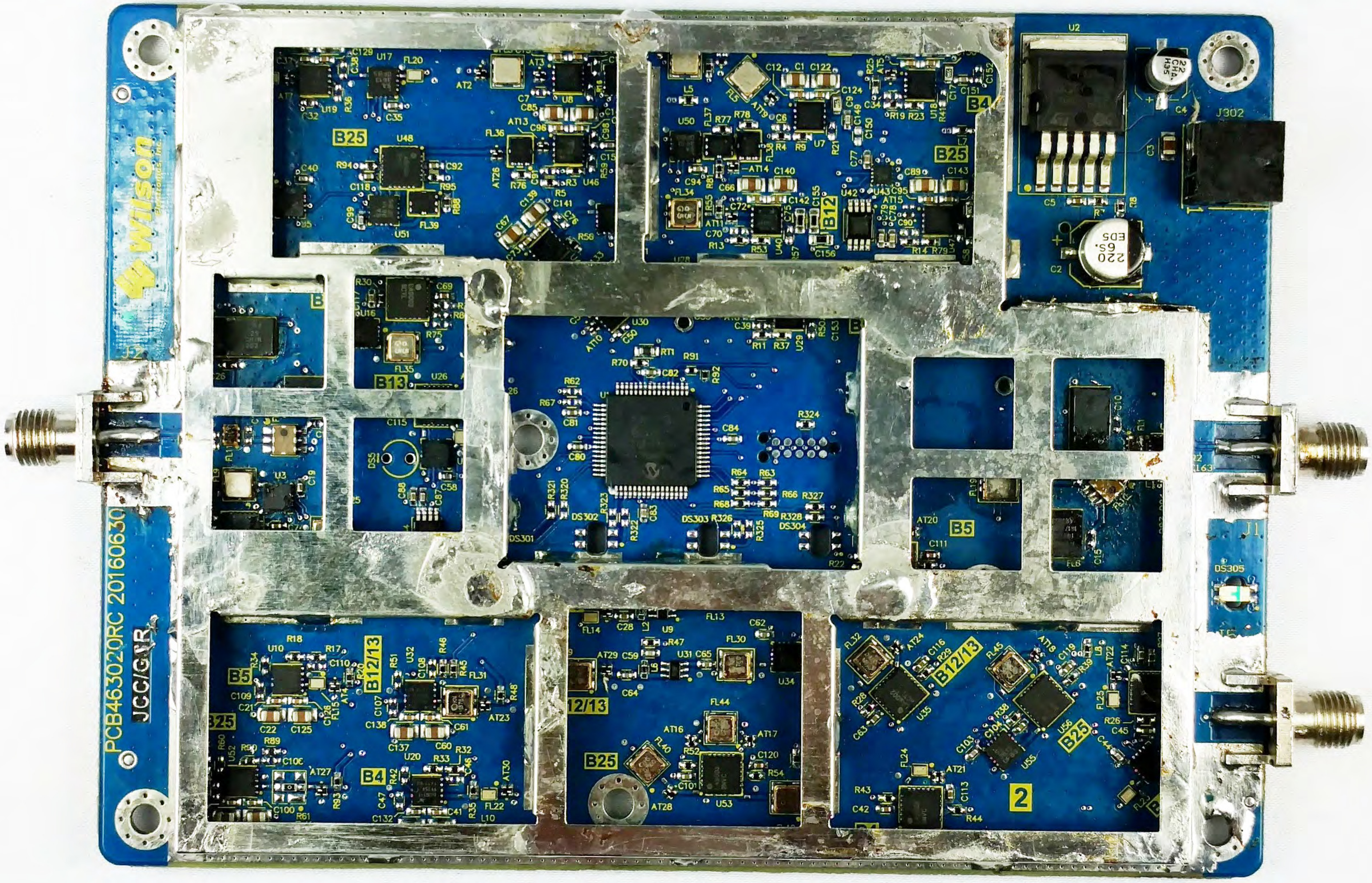


PCB463020RA 20150901

JCC/GSR

weboost





Wilson  
Electronics, Inc.

PCB463020RC 20160630  
JCC/GJR

PCB populated with components including U17, U48, U51, AT2, AT3, AT13, AT26, AT1, AT7, AT19, AT20, AT21, AT22, AT23, AT24, AT25, AT26, AT27, AT28, AT29, AT30, AT31, AT32, AT33, AT34, AT35, AT36, AT37, AT38, AT39, AT40, AT41, AT42, AT43, AT44, AT45, AT46, AT47, AT48, AT49, AT50, AT51, AT52, AT53, AT54, AT55, AT56, AT57, AT58, AT59, AT60, AT61, AT62, AT63, AT64, AT65, AT66, AT67, AT68, AT69, AT70, AT71, AT72, AT73, AT74, AT75, AT76, AT77, AT78, AT79, AT80, AT81, AT82, AT83, AT84, AT85, AT86, AT87, AT88, AT89, AT90, AT91, AT92, AT93, AT94, AT95, AT96, AT97, AT98, AT99, AT100.

PCB populated with components including U50, U7, U18, U19, U20, U21, U22, U23, U24, U25, U26, U27, U28, U29, U30, U31, U32, U33, U34, U35, U36, U37, U38, U39, U40, U41, U42, U43, U44, U45, U46, U47, U48, U49, U50, U51, U52, U53, U54, U55, U56, U57, U58, U59, U60.

PCB populated with components including U2, C4, C5, C6, C7, C8, C9, C10, C11, C12, C13, C14, C15, C16, C17, C18, C19, C20, C21, C22, C23, C24, C25, C26, C27, C28, C29, C30, C31, C32, C33, C34, C35, C36, C37, C38, C39, C40, C41, C42, C43, C44, C45, C46, C47, C48, C49, C50, C51, C52, C53, C54, C55, C56, C57, C58, C59, C60.

PCB populated with components including U16, U26, U3, U15, U16, U17, U18, U19, U20, U21, U22, U23, U24, U25, U26, U27, U28, U29, U30, U31, U32, U33, U34, U35, U36, U37, U38, U39, U40, U41, U42, U43, U44, U45, U46, U47, U48, U49, U50, U51, U52, U53, U54, U55, U56, U57, U58, U59, U60.

PCB populated with components including U30, U31, U32, U33, U34, U35, U36, U37, U38, U39, U40, U41, U42, U43, U44, U45, U46, U47, U48, U49, U50, U51, U52, U53, U54, U55, U56, U57, U58, U59, U60.

PCB populated with components including U20, U21, U22, U23, U24, U25, U26, U27, U28, U29, U30, U31, U32, U33, U34, U35, U36, U37, U38, U39, U40, U41, U42, U43, U44, U45, U46, U47, U48, U49, U50, U51, U52, U53, U54, U55, U56, U57, U58, U59, U60.

PCB populated with components including U10, U20, U30, U40, U50, U60, U70, U80, U90, U100, U110, U120, U130, U140, U150, U160, U170, U180, U190, U200, U210, U220, U230, U240, U250, U260, U270, U280, U290, U300, U310, U320, U330, U340, U350, U360, U370, U380, U390, U400, U410, U420, U430, U440, U450, U460, U470, U480, U490, U500, U510, U520, U530, U540, U550, U560, U570, U580, U590, U600.

PCB populated with components including U9, U10, U11, U12, U13, U14, U15, U16, U17, U18, U19, U20, U21, U22, U23, U24, U25, U26, U27, U28, U29, U30, U31, U32, U33, U34, U35, U36, U37, U38, U39, U40, U41, U42, U43, U44, U45, U46, U47, U48, U49, U50, U51, U52, U53, U54, U55, U56, U57, U58, U59, U60.

PCB populated with components including U24, U25, U26, U27, U28, U29, U30, U31, U32, U33, U34, U35, U36, U37, U38, U39, U40, U41, U42, U43, U44, U45, U46, U47, U48, U49, U50, U51, U52, U53, U54, U55, U56, U57, U58, U59, U60.

PCB463020RC 20160630  
JCC/GSR

 **Wilson**  
Electronics, Inc.

J2

J1  
DS305  
T5

U2

220 6S EDS C2

3302

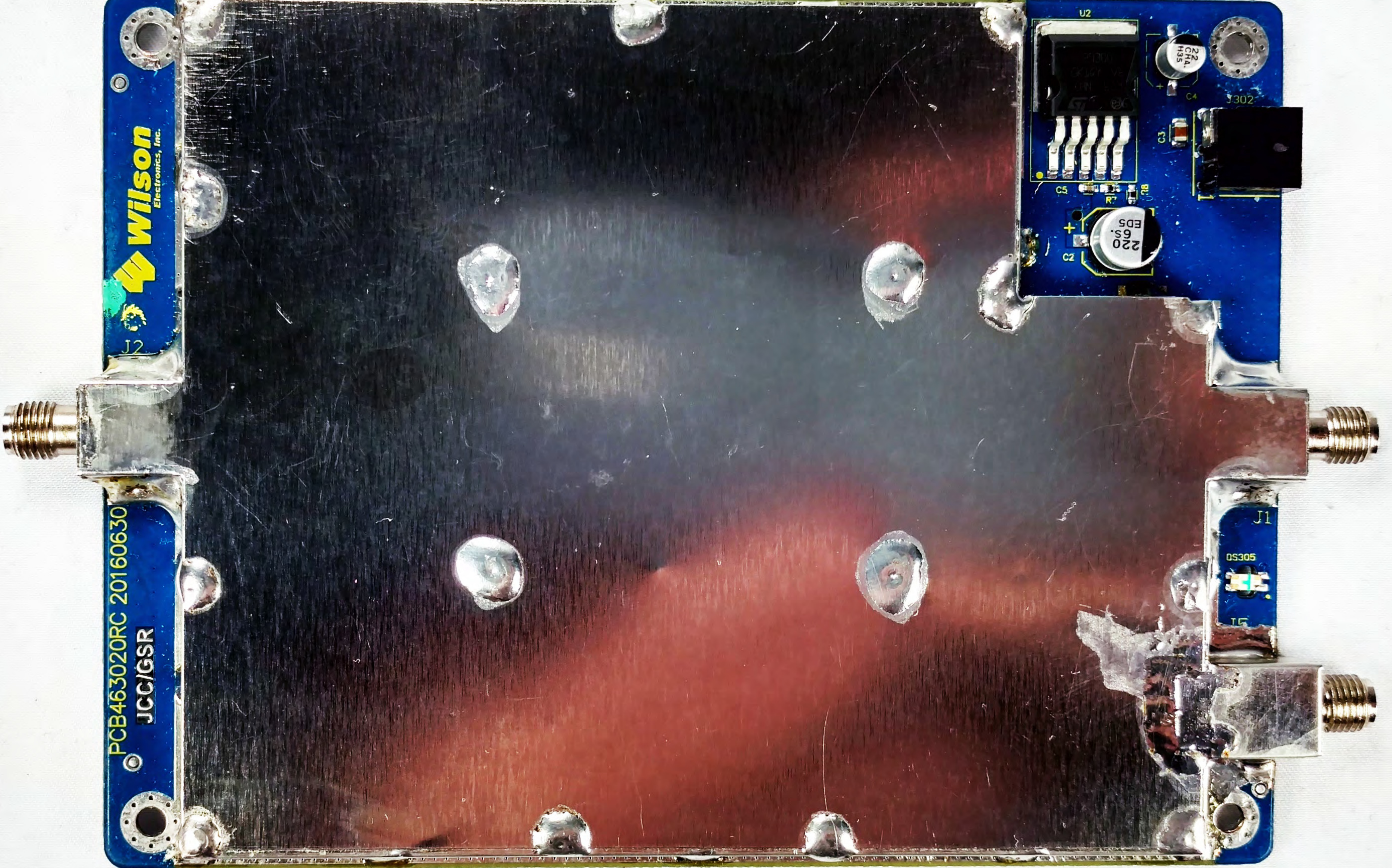
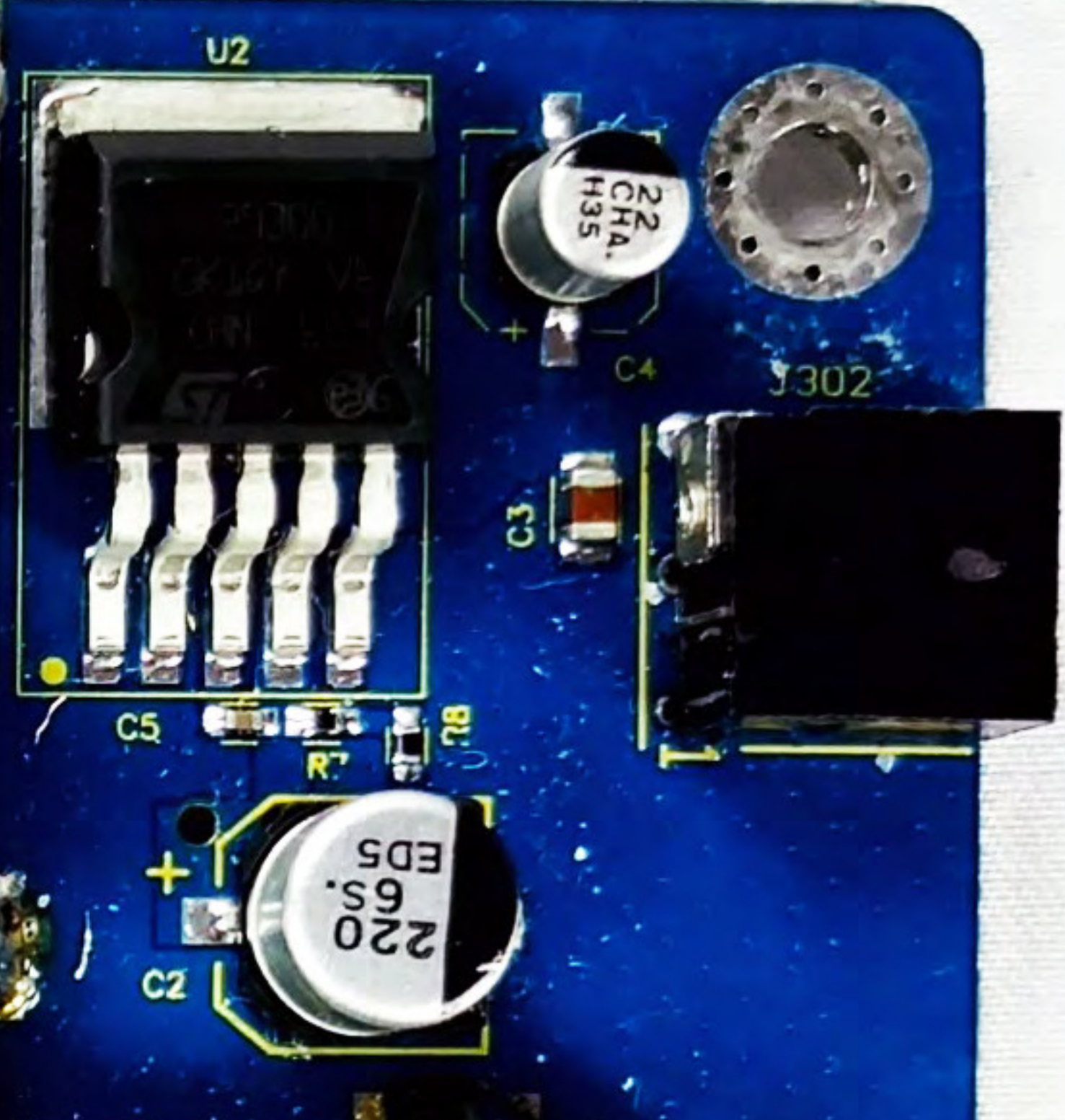
3302

C3

C5

R7

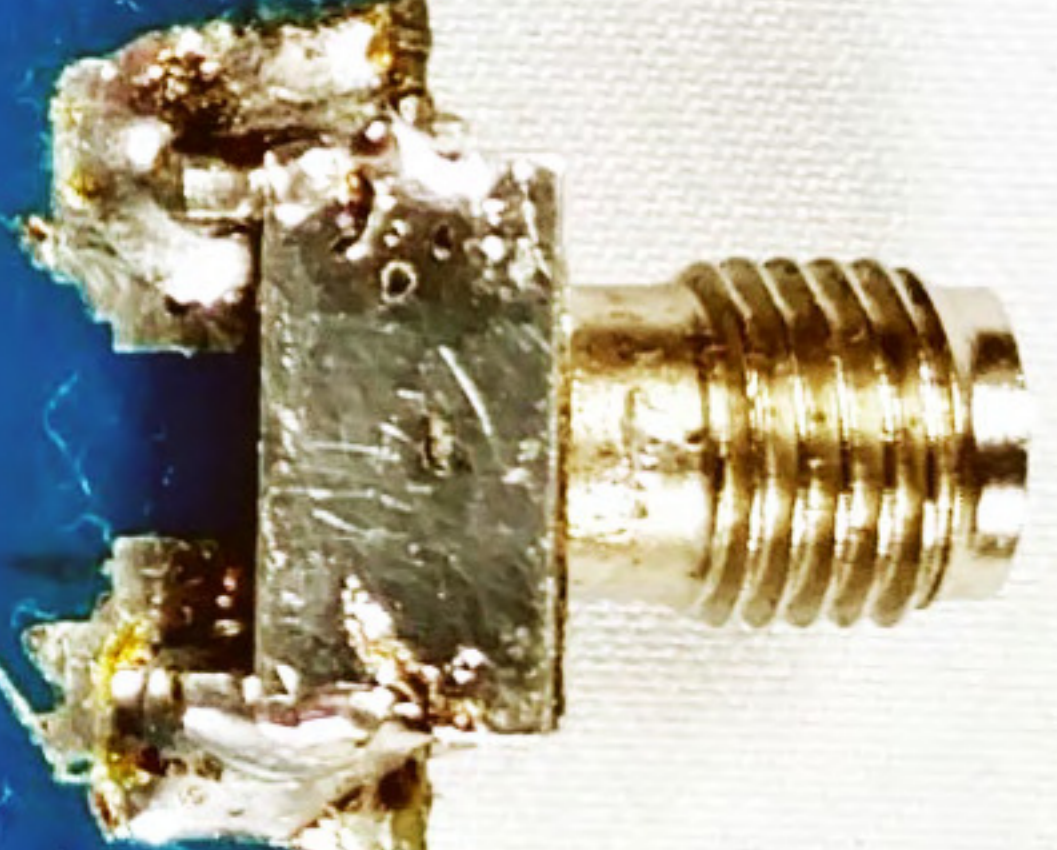
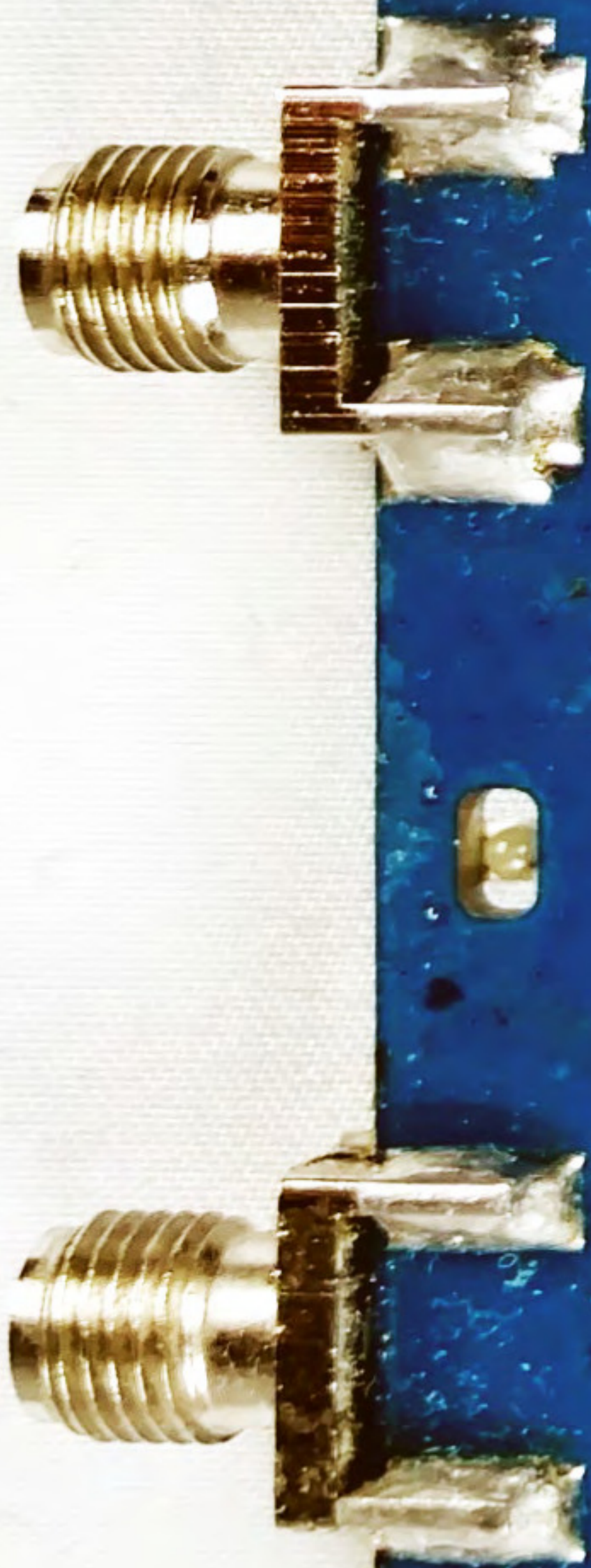
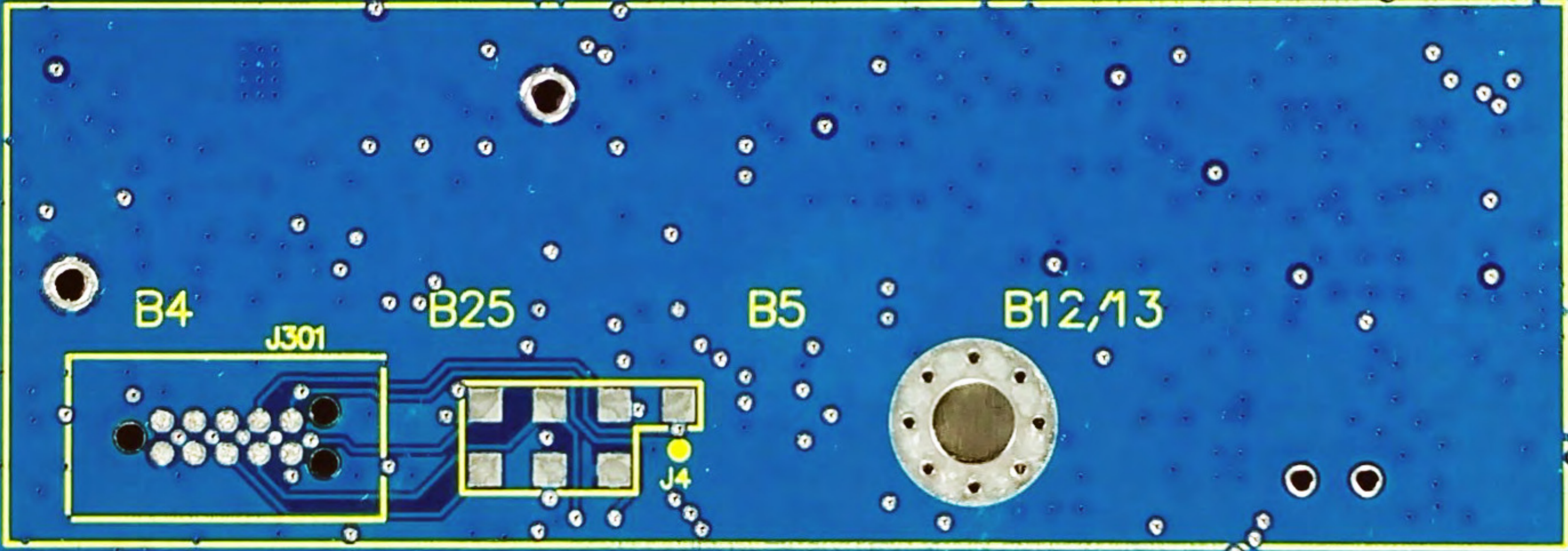
U1B

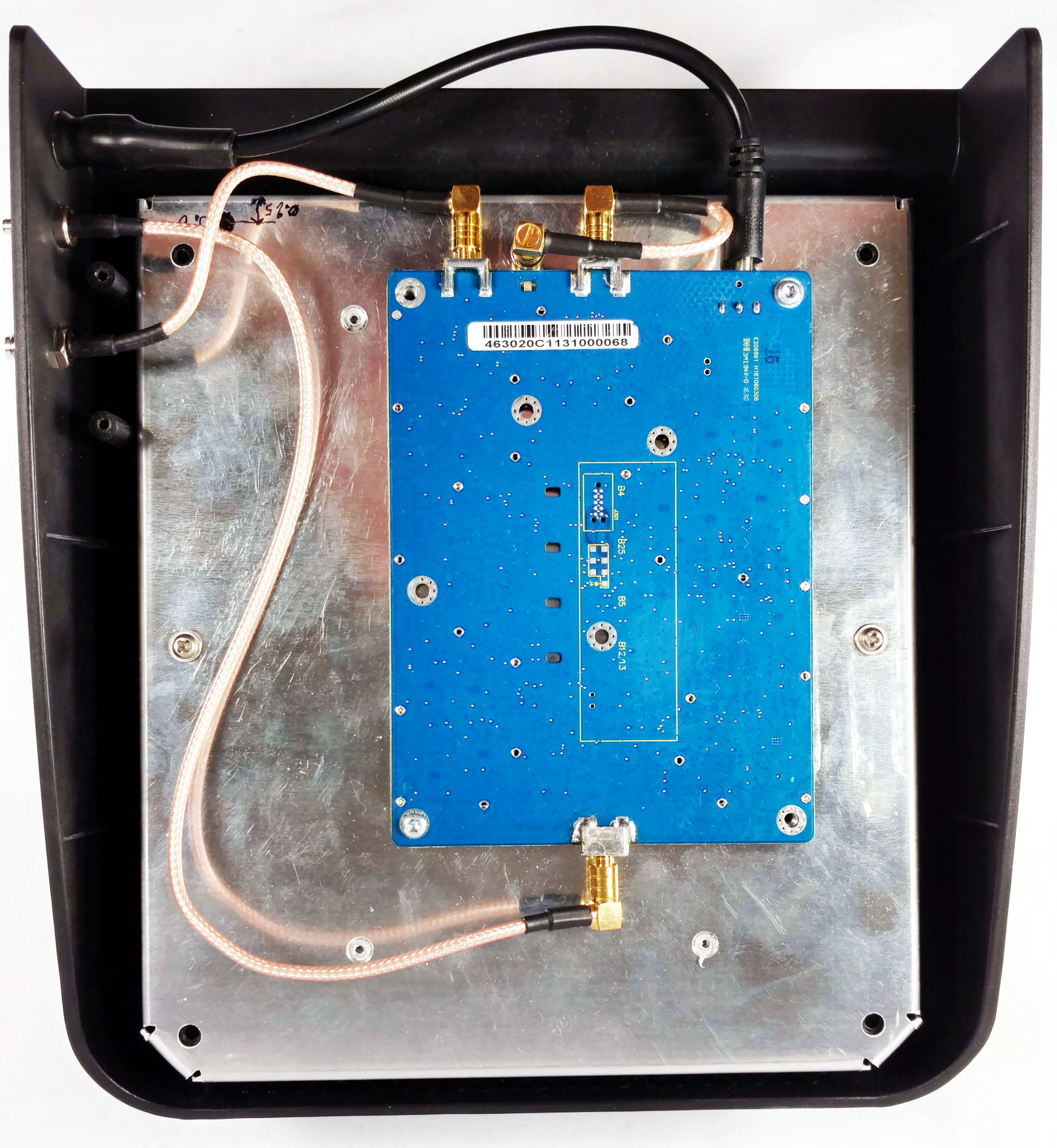


15

E206991 H161060306  
3M1 94V-0 16 30

463020C1131000067





463020C1131000068

E206891 H161060306  
ENIEMI 94V-0 S:30

B4  
B25  
B5  
B12,13