

Congratulations on purchasing your Eclipse Personal Media Player! To get the most out of your purchase, please take the time to carefully read through this manual.

Foreword

If any problems occur during while using your Eclipse, please feel free to contact Mach Speed technical support at 580-272-0035, or sending an email to mssupport@machspeed.com.

Thank you for your support and cooperation!

Mach Speed Technologies bears no responsibility for any damage or loss of personal data due to misuse of software and/or hardware, damage to the player caused by human factors, replacement of battery, or other unforeseen circumstances. To prevent loss of your data, please backup your data regularly. Information in the manual is subject to change without notice and is subject to copyright protection. Copying or otherwise reproducing this material without prior written consent is prohibited.

Due to Firmware changes, some of the pictures and functions described in this manual may not be the same as are included with your player.

The playback times listed refer to the maximum playback times possible, using the best power savings. The actual playback time may differ as adjustments to screen brightness, power savings modes, volume, etc are made.

Note:

- Do not use the player in exceptionally cold or hot, dusty, damp or dry environments.
- Do not drop, strike, or throw your player. Physical damage to your player will void ALL warranties.
- Please charge your battery when
 - Battery power icon shows an empty icon;
 - The system automatically shuts down and the power is soon off when you switch on the unit once again;
 - There is no response if you operate on any key
- Please always follow the correct disconnect procedures for your operating system. Do not disconnect power abruptly when the player is being formatted or in the process of uploading or downloading files. Otherwise it may lead to file corruption, firmware failure, and even hardware damage.
- Please ensure that the player is powered off before inserting or removing the Micro SD Card
- We are not liable for and loss of data stored on this device.
- Please do not dismantle this player. Any disassembly not done by an authorized technician will void ALL warranties
- This product and manual are change without subject to notice.

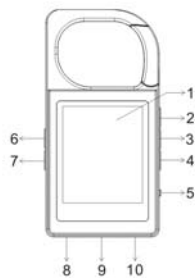
FCC STATEMENT

1. This device complies with Part 15 of the FCC Rules.
Operation is subject to the following two conditions:
 - (1) This device may not cause harmful interference, and
 - (2) This device must accept any interference received, including interference that may cause undesired operation.
2. Changes or modifications not expressly approved by the party responsible for compliance could void the user's authority to operate the equipment.

NOTE: This equipment has been tested and found to comply with the limits for a Class B digital device, pursuant to Part 15 of the FCC Rules. These limits are designed to provide reasonable protection against harmful interference in a residential installation. This equipment generates, uses and can radiate radio frequency energy and, if not installed and used in accordance with the instructions, may cause harmful interference to radio communications. However, there is no guarantee that interference will not occur in a particular installation. If this equipment does cause harmful interference to radio or television reception, which can be determined by turning the equipment off and on, the user is encouraged to try to correct the interference by one or more of the following measures:

- Reorient or relocate the receiving antenna.
- Increase the separation between the equipment and receiver.
- Connect the equipment into an outlet on a circuit different from that to which the receiver is connected.
- Consult the dealer or an experienced radio/TV technician for help.

Appearance



1. Screen 2.Prev 3.Menu 4. Next 5.Power on/Off 6.Play/Pause
7.Volume 8.Earphone Jack 9.Micro SD card slot 10.USB Jack

Basic Operations

- **Power on:** Set the ON/OFF switch to the ON position, and then press and hold the [Play/pause] button to power on.
 - **Power off:** Press and hold the [Play/pause] button to power off. If you do not plan on using the player for a long time, please set the ON/OFF switch to the OFF position.
- Note: When battery power is low, the player will automatically power off.*
- **Adjusting volume:** In the Music or Record modes, press the [VOL] button to

decrease or increase the volume.

- **Charging the player:** To charge your player, set the ON/OFF switch to the ON position and connect the player to computer or charger using the included USB Cable.

Music



On the main menu, highlight “Music” using the [PREV] or [NEXT] buttons, and then press the [MENU] button to enter the music mode. Press the [Play/Pause] button to play. Press the [NEXT] or [PREV] button to select the next or previous file. Press and hold the [NEXT] or [PREV] button to fast forward or rewind the current file. Press the [VOL] button to adjust the volume. When playing music, press the [Play/Pause] button to pause music, press again to play.

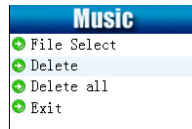
Press and hold the menu button will return to the Main Menu.

Briefly press the [MENU] button **while a file is playing** to enter the music submenu.

Music Submenu

- **Equalizer**-You can play the tracks with different sound effects. The device provides 7 preset EQ modes: Natural, Pop, Rock, Classic, Jazz, Soft, and DBB.
- **Repeat**- Allows you to set the repeat mode. Select from Normal (play all tracks in order, and stop after playing each once), Repeat one (plays a single file over and over again),Folder, Repeat Folder, Repeat all (plays each file over and over).Random, and Intro.
- **Replay**-Select "Replay", and then press the [MENU] button to enter A-B repeat mode. Press [PREV] or [NEXT] button to set the point A(start) ,and press the [PREV] or [NEXT] B(end), press again to exit A-B repeat mode.
- **Exit**- return to the music playback screen.

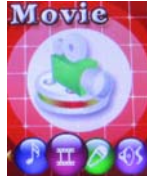
Briefly press the [MENU] button **while a file is paused** to display the storage submenu.



Storage Submenu

- **File select** – This will display a list of files. Use the [PREV] or [NEXT] buttons to select the song, and press the [MENU] button to play it.
- **Delete** – you can delete this current song here.
- **Delete All** – you can delete all songs here.
- **Exit**- return to the music paused screen.

Movie



On the main menu, highlight “Movie” using the [PREV] or [NEXT] buttons, and then press the [MENU] button to enter the movie mode. Press the [Play/Pause] button to play. Press the [NEXT] or [PREV] button to select the next or previous movie. Press and hold the [NEXT] or [PREV] button to fast forward or rewind the current movie. Press the [VOL] button to adjust the volume.

When playing movie, press the [Play/Pause] button to pause the movie, press again to play.

Press and hold the menu button to return to the Main Menu.

Briefly press the [MENU] button **while a file is paused** to display the storage submenu.

- **File select** - This will display a list of files. Use the [PREV] or [NEXT] buttons to select the song, and press the [MENU] button to play it.
- **Delete** – you can delete this current playing movie here.
- **Delete All** – you can delete all movies here.
- **Exit**- return to the movie paused screen.

Record



On the main menu, select "Record" with the [PREV] or [NEXT] buttons, and then press the [MENU] button to enter the Recording mode. Press the [Play/Pause] button to start recording. While recording, you can press the [Play/Pause] button to pause or resume the recording. Press and hold the [MENU] button to stop and save the recording. Briefly press the [MENU] button to display the Recording submenu.

Recording Submenu

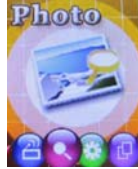
● **REC type**- Allows you to save your voice recordings either in .Long REC, Fine REC.

Voice



On the main menu, select "Voice" using the [PREV] or [NEXT] buttons, and then press the [MENU] button to enter the voice mode. You will listen to the voice recordings. This mode functions identically to the Music Mode

Photo



On the main menu, select "Photo" using the [PREV] or [NEXT] buttons and press [MENU] button to enter.

When you first enter the picture browser, a list of the pictures on your player

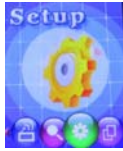
will be displayed. Use [PREV] or [NEXT] button to select the picture you would like to view, and press [Menu] button to display the picture, Use the [PREV] or [NEXT] button to view previous or next one.

Press [Menu] button to enter the Photo submenu. Press the [PREV] or [NEXT] button to choose **File Select/ /Play Set/Tempo rate/Delete /Delete All/ Exit.**

And press [Menu] button again to enter your select

- 1) **File Select:** Press [Menu] button to enter "File Select". Use [PREV] or [NEXT] button to select the picture you would like to view and press [Menu] button to display the picture, Use the [PREV] or [NEXT] button to previous or next one.
- 2) **Play Set:** Press [Menu] button to enter "Play Set". Use [PREV] or [NEXT] button to select Manual play or Auto play.
- 3) **Tempo rate:** Press [Menu] button to enter "Tempo rate". Use [PREV] or [NEXT] button to choose the Tempo rate from 1-10 seconds. Press [Menu] button to confirm your select "Tempo rates".
- 4) **Delete:** Press [Menu] button to enter "Delete", Press [PREV] or [NEXT] button to select "YES" or "NO", Press [Menu] button to confirm "YES" or "NO"
- 5) **Delete All:** use [PREV] or [NEXT] button to select the "Delete All" and Press [Menu] button to enter "Delete All", Press [PREV] or [NEXT] button to select "YES" or "NO", Press [Menu] button to confirm
- 6) **Exit:** use [PREV] or [NEXT] button to select the "Exit" and Press [Menu] button to Exit.

Setup

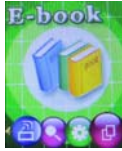


On the main menu, select "Setup" using the [PREV] or [NEXT] buttons and press [MENU] button to enter.

Brief introduction to each option

LCD set	Sets the Backlight time
Language	Set the display language
Power off	Set a timer to shut the player down automatically
Memory info	View the used and available memory
Exit	Return to the main menu

E-book



On the main menu, select "Ebook" with the [PREV] or [NEXT] buttons, and then press the [MENU] button to enter the Ebook mode.

When you enter the Ebook mode, you will see record file and text file. Once you have press [Menu] for selected a file will display automatically. While viewing your files you can press the [Menu] button to enter the Ebook submenu.

E-book submenu

- 1) **File Select:** Press [Menu] button to enter "File Select". Use [PREV] or [NEXT] button to select the picture you would like to view and press [Menu] button to display the picture, Use the [PREV] or [NEXT] button to previous or next one.
- 2) **Play Set:** Press [Menu] button to enter "Play Set". Use [PREV] or [NEXT] button to select Manual play or Auto play.
- 3) **Tempo rate:** Press [Menu] button to enter "Tempo rate". Use [PREV] or [NEXT] button to choose the Tempo rate from 1-10 seconds. Press [Menu] button to confirm your select "Tempo rates".
- 4) **Exit:** use [PREV] or [NEXT] button to select the "Exit" and Press [Menu] button to Exit.

COMPUTER COMMUNICATION

Using Windows Media Player

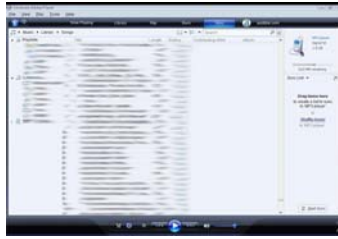
(Note: you must use Windows Media Player 10 or later to use this feature.)

(Note: this player does not support DRM encrypted audio or video files, such as those downloaded from the Windows Media Player "Overdrive" download service.)

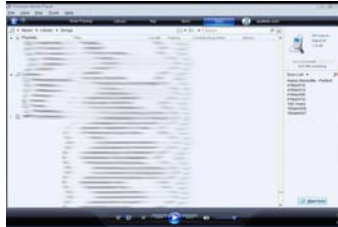


1. Open Windows Media Player and connect the player to a working USB port. Windows Media player will prompt you with a setup screen asking you to name the MP3 player.

2. Once you have named your MP3 player, select Finish, and your Windows Media Player will open to the Sync tab.



3. Drag your music to the sync list (on the right of the screen) from the list on the left. Once you have selected the music you wish to add to the player, press Sync.



4. Windows Media player will load the songs on to your player.



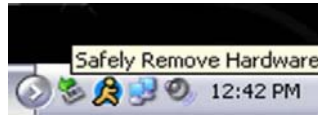
5. Once all the songs you have added are synced to the unit, and Windows Media Player says that is safe to disconnect your MP3 player, disconnect the device.



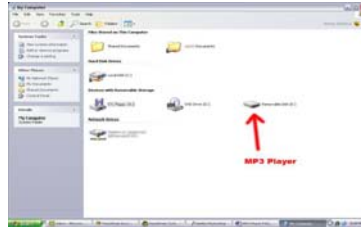
COPY AND PASTE

Note- This alternate method is used to load videos, pictures, and ebook files as well as audio files

1. Connect the MP3 player to a working USB port.
2. When the unit is connected to your computer, it will create a gray and green icon in the system tray (lower right hand corner of your desktop). The icon will be called safely remove hardware.



3. Go to the "My Computer" section of your computer. In there you will find a section called "devices with removable storage"



4. Locate the drive created by the unit, generally just called Removable Disk, with a letter in Parenthesis. Drive letters vary depending on your system configuration.
5. Open the drive by either double left clicking on the drive itself, or by right clicking to open the option menu then left click on the desired drive.
6. Locate the music stored on your computer. Generally this is stored in the “My Music” folder of your computer.

NOTE: if you are unable to locate the music on your computer, click on start, search, files and folders, then search for “*.MP3, *.WMA”.



7. Once you have located the song files, you can right click on the song itself, and select “copy”. Open the removable disk drive, right click on in the empty space, and select Paste. This will transfer the song on to your player.



8. Repeat step 7 for as many songs as you want to copy on to the unit.

NOTE: MAC Computers

When connected to your MAC computer, the device will act as a removable drive. Simply drag your files to the device.

Limited Manufacturer's Warranty

1. MACH SPEED products carry a one year from date of purchase warranty.

This warranty is nontransferable.

2. Mach-Speed Technologies warrants to the original registered end-user purchaser that Mach Speed products will be free from defects in materials and workmanship for one year from the date of new purchase. During the warranty period, and upon proof of purchase the product will be repaired or replaced (with the same or a similar model, which may be a refurbished model) at Mach Speed Technologies option, without charge for either parts or labor. This warranty shall not apply if the product is modified, tampered with, misused, physically damaged, or subjected to abnormal working conditions (including, but not limited to, electrical, fire, and water damage).

THIS WARRANTY DOES NOT GUARANTEE YOU UNINTERRUPTED SERVICE. REPAIR OR REPLACEMENT AS PROVIDED UNDER THIS

**LIMITED WARRANTY IS THE EXCLUSIVE REMEDY OF THE
PURCHASER.**

To obtain service under this warranty, you must contact our Technical department at (580) 272-0035 to obtain an RMA number. Mach Speed Technologies will only replace or repair product that is sent to us with an authorized RMA number.

Return Merchandise Authorization (RMA):

1. Customers will be charged additional for testing and repackaging when returned "bad" items are found to have no problems or defects.
2. Items found to be out-of-warranty or not belonging to Mach Speed Technologies will not be replaced. Instead, they will be returned back to the customer freight-collect.
3. RMA's will be shipped back to customer via UPS ground delivery. Express shipping will be at additional costs to the customer.
4. All RMA's must be accompanied with a copy of original receipt or invoice with name, return address and phone number of customer.

Exchanges:

1. Items will not be cross-shipped for any reason.
2. The original receipt or invoice must accompany all exchanges.
3. All exchanges must be shipped freight pre-paid by the customer and include a pre-paid shipping label for shipment back to the customer. Furthermore, the customer is expected to insure all items being shipped back. Mach Speed Technologies is not responsible for any losses or damages for such equipment.
4. All sales are final. Mach Speed Technologies will not accept any returns for credit or refund.

Discrepancy & Shipping Damage:

1. For wrong items, missing items, shipping damage, or other discrepancy; customer should report to RMA department on the day in which the items were received. Any claims after one business day of receipt will not be honored.
2. For any shipping damage, customer must file a claim with their carrier immediately. All items are shipped insured, thus must be reported for coverage.
3. Customer is responsible for paying any freight charge caused by refused shipment or unclaimed goods.

4. Mach Speed Technologies will make every reasonable effort to deliver on time however; Mach Speed Technologies will not be liable for late or lost shipments.

Consequential Damages and Limitations:

1. Mach Speed Technologies shall not be liable for any failure to perform or delay in performing any of its obligations when such failure or delay is due to circumstances beyond its reasonable control, including, without limitation, any act of God, war, strike, riot, fire, flood, earthquake, lock-out, late or non-delivery by suppliers, shortage or unavailability of materials, components or transportation facilities, or any act, refusal to act, regulation, order or intervention of any governmental authority.

2. Under no circumstances shall Mach Speed Technologies be liable for any special, indirect, incidental or consequential damages of any kind or nature whatsoever, including, without limitation; lost goodwill, lost resale profits, loss of data or software, work stoppage or impairment of other goods, and whether arising out of breach of any express or implied warranty, breach of contract, tort (including negligence), strict product liability or otherwise, even if advised of

the possibility of such damage or if such damage could have been reasonably foreseen.