

ECLIPSE

BY



mach speed technologies

AMERICAN OWNED AND OPERATED

Model V180

USER'S MANUAL

WWW.MACHSPEED.COM

Eclipse V180 Instruction Manual

Congratulations on purchasing your Eclipse Personal Media Player! To get the most out of your purchase, please take the time to carefully read through this manual.

Foreword

If any problems occur while using your Eclipse, please feel free to contact Mach Speed technical support at 580-272-0035, or send an email to mssupport@machspeed.com.

Thank you for your support and cooperation!

Mach Speed Technologies bears no responsibility for any damage or loss of personal data due to misuse of software and/or hardware, damage to the player caused by human factors, replacement of battery, or other unforeseen circumstances. To prevent loss of your data, please backup your data regularly.

Information in the manual is subject to change without notice and is subject to copyright protection. Copying or otherwise reproducing this material without prior written consent is prohibited.

Due to Firmware changes, some of the pictures and functions described in this manual may not be the same as those included with your player.

Note:

- The playback times listed refer to the maximum playback times possible, using the best power savings. The actual playback time may differ as adjustments to screen brightness; power savings modes, volume, etc. are made.
- As parameters such as formats, bitrate, codecs, frame rates, and resolutions differ, the player will not be compatible with all listed files. If you are experiencing issues playing your files on this player, we recommend using a supported conversion tool to reconvert your file to the specifications of the device.

Caution

Modifications not approved by the party responsible for compliance could void the user's authority to operate the equipment.

NOTE- This equipment has been tested and found to comply with the limits for Class B Digital device, pursuant to part 15 of the FCC rules. These limits are designed to provide reasonable protection against harmful interference in a residential installation. This equipment generates, uses, and can radiate radio frequency energy. If not installed and used in accordance with the instructions, may cause harmful interference to radio or telephone reception, which can be determined by turning the equipment off and on. The user is encouraged to try to correct the interference by one or more of the following measures:
Reorient or relocate the receiving antenna.

Increase the separation between the equipment and the receiver

Connect the equipment to an outlet on a circuit different from that to which the receiver is connected.

Consult the dealer or an experienced radio/TV technician for help.

Caution

- Do not use the player in exceptionally cold, hot, dusty, damp or dry environments.
- Do not drop, strike, or throw your player.
Physical damage to your player will void ALL warranties.
- Please charge your battery when:
 - Battery power icon shows an empty icon;
 - There is no response if you tap a button
- Please always follow the correct disconnect procedures for your operating system. Do not disconnect power abruptly when the player is being formatted or in the process of uploading or downloading files. Otherwise it may lead to file corruption, firmware failure, and even hardware damage.
- We are not liable for any loss of data stored on this device.
- Please do not dismantle this player. Any disassembly not done by an authorized technician will void ALL warranties
- This product and manual are Subject to change without notice.

Features

- Touch Screen Operating system for easy use.
- 1.8", 160X128 resolution, 260k color TFT screen.
- Supports the following audio formats: MP3 (non encrypted).
- Supports the following image formats: JPG, BMP, GIF.
- Supports the following Video formats: AMV video at 160x128 resolution.
- Supports eBook files in TXT format.
- Built in Audio software, which allows you to make voice notes in WAV format.

Basic Operations

Powering on

To power the player on, press and hold the power button for 5 seconds until the eclipse logo displays on the screen.

Powering off

To power the player off, press and hold the power button for 5 seconds until the screen displays Bye-Bye and then goes dark.

Locking and Unlocking the screen

When the screen powers down (Due to the battery saving auto dim feature in settings) the screen will lock to prevent accidental screen taps .When you press a button on the top of the device to bring your screen back up, it will still be locked, and you will see the below image.



To unlock your screen, press and hold the minus button (-) until the screen displays a lock unlocking.



Charging

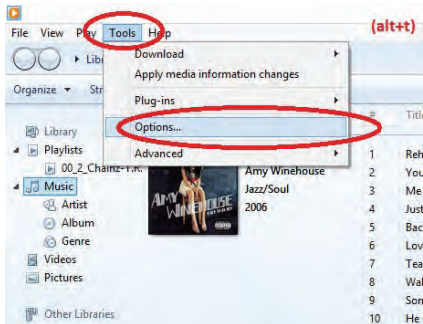
To charge your player, simply connect the device to a powered USB port on your computer.

Loading files

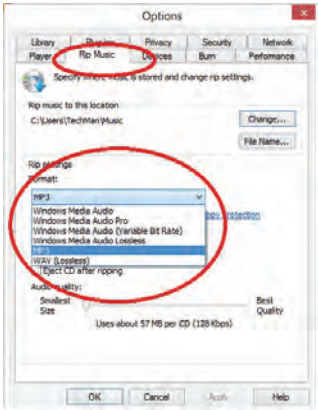
Using Windows Media Player

Before ripping your CD to your computer using your Windows Media Player there are a couple steps we can go through to make sure that you are ripping them to the compatible format for your Eclipse/Trio Player.

1. Open your Windows Media Player (these steps will work on any version after WMP 9).
2. Click on Tools at the top of your screen. (If you do not see tools hold down the ALT button and tap T).



3. Choose Options. This will pull up a menu with tabs. Click on the RIP MUSIC tab.



4. To change the format click on the Format drop down and choose MP3.

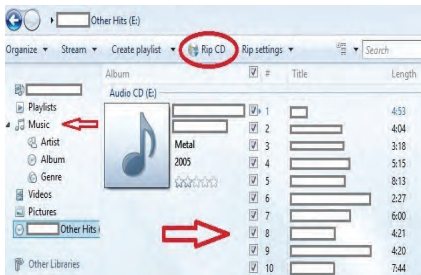
5. Click on Apply or OK to save.

Now that you have the necessary format required for your player you can insert the CD that you want to rip.

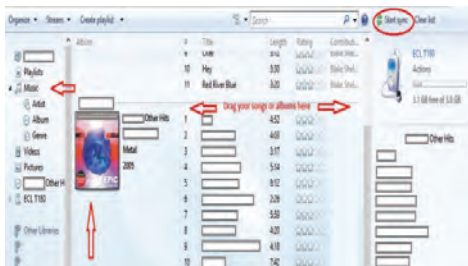
1. Once CD is inserted you will see a screen that has all of your tracks checked. (If you do not see this click on the RIP tab at the top of your screen) .
2. Next, if the rip process doesn't automatically start for you, click on the button at the top of your window that says Rip CD.
3. Once this is finished ripping click on Music on the left hand side of your screen to review your installed albums .

Your music is now ready to be copied over to your Eclipse/Trio MP3 player .

1. Using your USB cable, plug in your Eclipse/Trio MP3 player into your computer . (You may get a pop up screen asking what you want to do with this, go ahead and close that screen).
2. In your Windows Media Player you will see an area on the right hand side of your screen that says Sync List. You can drag your desired music into the Sync List and drop it in.



3. Once you have the MP3's that you want on your player dragged to your Sync List click on the Start Sync button above the name of the player you have plugged in.



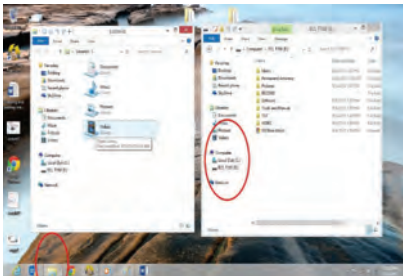
4. Do not unplug the device until it shows that it is 100% completed.

At this point your music will have been successfully loaded to your device. Play and Enjoy!

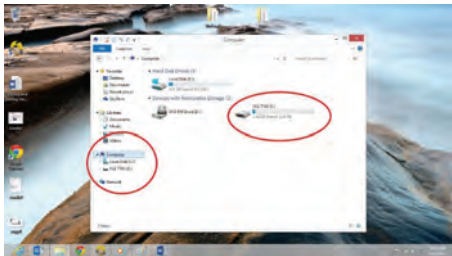
Copy and Paste, Windows 8

With this simple walkthrough you will know how to easily add music and pictures to your Eclipse/Trio device using your Windows 8 computer.

6. Plug your device into your computer using the USB cable that came with your device and go to your desktop. If you are not already on your desktop you should see an option for desktop on the bottom left of your menu.



7. You should see a pop up asking what you want to do with the drive and should see an option to open files to view folder. If you don't get this prompt, from your desktop, corner of your screen. This will pull up your computers directory of drives and folders.

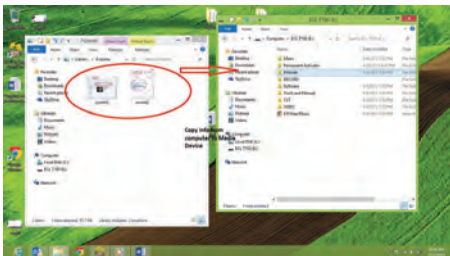


8. Click on Computer. You will see a driver category listed as Devices with Removable storage. Your drive for your player will be listed here.

9. To open the drive just double click on it and open the music or pictures folder.

Now with this window open you are now able to locate the supported files on your computer to either drag-and-drop or copy-and-paste to your Eclipse/Trio device. We're going to use pictures as an example.

4. At the top of the screen you have open click on File and “Open New Window”. This will stack two Explorer windows with the same content.
5. From this point having your windows side by side would make this a lot easier. You can either drag your windows apart or you can right click on your task bar and choose “Show Windows Side-by-Side”.
6. In the second window click on the Pictures folder listed on the left hand side. You should be able to find any pictures saved to your computer listed in here.
7. Locate the file you want on your device and right click and choose copy. At this point you can go into the first window opened and, in the Pictures folder there, right click and go to paste. Your picture should go right to your player.
8. An easier route would be to just click down and hold on the file you want on your device and drag it to the other window and drop it in. (Let go of click).



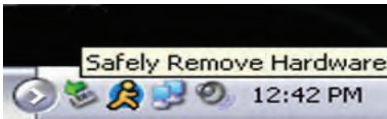
Any of the supported media on your computer can be copied over to your device, in the appropriate folders, in the same manner. Once copied over just unplug and enjoy!

Copy and Paste, Windows XP/7

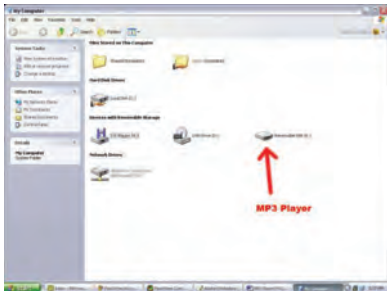
Note- This alternate method is used to load videos, pictures, and ebook files as well as audio files

1. Connect the MP3 player to a working USB port.

2. When the unit is connected to your computer, it will create a gray and green icon in the system tray (lower right hand corner of your desktop). The icon will be called safely remove hardware.



3. Go to the “My Computer” section of your computer. In there you will find a section called “devices with removable storage”.



4. Locate the drive created by the unit, generally just called Removable Disk, with a letter in Parenthesis. Drive letters vary depending on your system configuration.

5. Open the drive by either double left clicking on the drive itself, or by right clicking to open the option menu then left click on the desired drive.

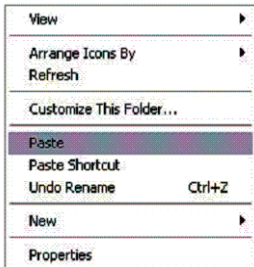
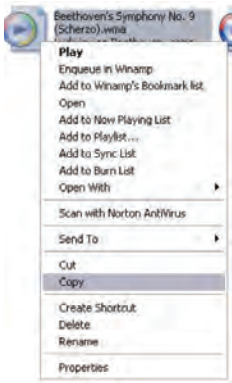


6. Locate the music stored on your computer. Generally this is stored in the “My Music” folder of your computer.

NOTE: if you are unable to locate the music on your computer, click on start, search, files and folders, then search for “*.MP3*”.



7. Once you have located the song files, you can right click on the song itself, and select “copy”. Open the removable disk drive, right click on in the empty space, and select Paste. This will transfer the song on to your player.




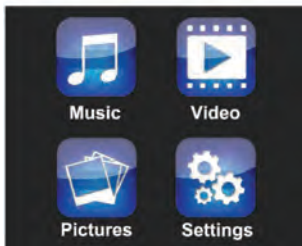
8. Repeat step 7 for as many songs as you want to copy on to the unit.

NOTE: MAC Computers

When connected to your MAC computer, the device will act as a removable drive. Simply drag your files to the device.

The Main Menu

Your main menu consists of two screens. To slide back and forth between the two screens, touch the Arrow icon  with your finger/stylus, and slide it to the left. When on your second screen, you will touch the arrow icon, and slide your finger/stylus to the right.



Tapping an Icon will take you into the appropriate mode.





Music Mode

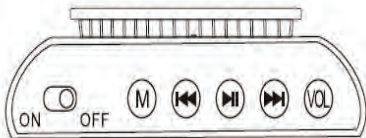
Your Music mode allows you to Play back all of your audio files, including songs, podcasts, audio books, etc.

Tech Note – This device will only support audio files in MP3 and WAV formats. If your audio files are not in one of these formats, they will NOT play on this device.

Tech Note – This device does NOT support DRM encrypted, or copy protected audio files. If you load those files to the device, they will NOT play, and generate an error message.

To begin playing a file, press the “M” button. Press the same button to pause the file. Pressing the right  or left  arrow button will skip to the next or previous

tracks. Pressing and holding the plus button (+) or minus button (-) to fast forward, or rewind the current track, respectively.



Icon Explanation (top to Bottom)



Battery Icon—This icon will display your battery charge. The more full this icon is, the more charge is left on the battery.



Equalizer—This icon will display your equalizer mode.



Repeat Mode—This icon will display your Repeat mode. In order, these are: Normal, Repeat One, Folder, Repeat Folder, Repeat All, and Random All. The icon displayed in the example here is for Repeat All.



Volume—This icon and number displays your volume level. Volume levels range from 0 (muted) to 40 (maximum). You adjust the volume using the + and – buttons on the top of the device.



Back Icon—tapping this will return you to the main menu.



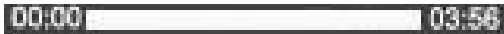
File Format—This icon displays the format your file is saved as. This will be located in a box, on the left hand side of the screen, immediately below the battery. This sample shows a file in .WAV format.

Bitrate—This Number will display the bitrate of the current file (in kbps)

Song counter—This icon displays how many files are in the current play mode , and which file you are on. For example, if this icon reads as 002/006, you are on the second of 6 files ready to play.



con—Tapping this icon will take you into your Music submenu, or Music selection menu. If your audio file is PLAYING and you tap this icon, you will go to the Music Submenu. If your audio file is PAUSED and you tap this icon, you will go to the Music selection menu. Tapping the “M” button on the top of the device will do the same.



Progress bar—This bar at the bottom indicates the file progress. As your file plays, this will fill. The number at the beginning of the bar indicates at what point in the file you are, and the number at the end of the bar indicates the total file length. If your progress bar is not filling, then the file is not playing.

Music Submenu


The music submenu allows you to adjust your repeat mode, equalizer, and replay mode. This submenu is


accessed by tapping the submenu icon or “M” button while the file is playing.

Repeat Mode—This allows you to change how your music plays. Normal will play through each file one time, repeat one will play a single file over and over again, folder will play through all files in the current folder once, repeat folder will play through all files in the current folder over and over again, repeat all will play through all of your files over and over again, random all will play all files in random order.

Equalizer—This function allows you to change your audio levels, creating one of several audio effects. Your choices are natural, pop, rock, classical, soft, jazz, and bass

Replay Mode—This option allows you to set up an A-B replay function. This will allow you to set up the number of times your A-B section replays, and the gap in seconds between replays.

Select Relay option will enable A-B replay function, and A will flicker on the top of playing screen, press  button to select A point, then B will flicker on the

top of playing screen, press  again to select B point, then player will start to replay the section selected, as the number of times and gap already set. Press M button will exit A-B replay function.

Music Selection Submenu

The Music Selection Submenu allows you to browse through the folders saved on your device to select specific folders or files to play. This submenu is accessed by tapping the submenu icon or the “M” button in music mode

While the file is paused.

Local Folder—Selecting this will take you to the root (base memory) and allow you to browse through your folders and files to select which file you would like to play. To enter a folder, simply tap it. If you accidentally go to the wrong folder, tap the backslash (\) at the top of the folder to exit that folder. To select a file to play, tap the file.

Delete File—This option deletes the current file.



Delete All- This option will delete all of the audio files on the device. Please note that this will delete only audio files, and not folders, images, videos, etc.



Video Mode

Your Video Mode allows you to play back your movies and videos.

Tech Note—This device will only support video files in AMV format at 160x128 resolution. If your video files are not in this format or at that resolution, they will NOT play on this device.

To begin playing a file, tap the icon in the center of the screen. Press Power button to pause the current file. Tapping the right  or left  arrow icons on the screen will skip to the next or previous tracks. Pressing and holding the plus button (+) or minus button (-) to fast forward, or rewind the current track respectively.

Tapping the submenu icon or press the “M” button while the file is paused will take you into the video Submenu which has the same Local Folder, Delete File, Delete All, and Repeat modes as the Music submenus.

Please note that the Video Submenu is the only submenu for video mode. Selecting Delete File or Delete All will delete only the video files, not folders, audio files, pictures, etc.



Photo Mode

Photo mode allows you to view photos and pictures you have loaded to the device.

Tech Note—This player supports image files in JPG, BMP and GIF Formats. If your files are not in this format, then they will NOT display on this player.

Tech Note—The native resolution on this device is 160x128 resolution .Images larger than that will

compress when they are displayed, leading to a loss of quality. Extremely large images may not display at all.

When you enter Photo mode, it will take you to a file selection screen which is identical to the “Local Folder” option in the Music and Video Modes. Simply tap a folder to enter it, and tap an image to view it.

When a file is displayed, you can slide the image to the next or previous screen by placing your finger/stylus on the right side of the screen and then sliding it to the left, or by placing your finger/stylus on the left side of the screen and then sliding it to the right.

Tap the power button to return to the Image selection screen.



eBook

The eBook mode allows you to view text files you have loaded on the player.

Tech Note—This device supports eBook files in TXT format only. If your files are not in TXT format, they will not display on this device.

When you enter eBook mode, it will take you to a file selection screen which is identical to the “Local Folder” option in the Music and Video Modes. Simply tap a folder to enter it, and tap an eBook to view it.

Once you have selected a file, and are reading it, there are several things you can do.

Pressing the + button will “turn the page” giving you the next page of text. You can also place your finger/stylus at the bottom of the screen and slide it up to advance to the next page

Pressing the–button will go back to the previous page of text. You can also place your finger/stylus at the top of the screen and slide it down to return to the previous page.

Pressing the “M” button will bring you to your eBook submenu where you can add, delete, or select a bookmark. You can also place your finger/stylus on the right side of your screen and slide it to the left.

Pressing the power button will return you to the file selection screen. You can also place your finger/stylus on the left and slide it to the right.



Browser

Your Browser mode is a more powerful version of your File selection screen in the Music, Video, Photo, and eBook modes. You can use the browser mode to navigate through your different folders and files. Selecting a file that is supported by the device will automatically open the file in the appropriate mode. For example if you select a song, it will immediately open the music mode and begin playing that file. If you selected a picture, photo mode would open and display the image.



Settings

Date/Time—This will allow you to adjust your date and time. Once you enter your Date and Time settings, tap the + button to highlight the year in blue. Use the blue up and down arrows on the right hand side of the screen to increase or decrease the value. Once your year is set appropriately, tap the + button again to move on to the month, and again use the blue arrows to adjust the value. Continue doing this with the day, hour, minute, and seconds. Once you are done, tap the “M” button to save the changes and return to settings.

Auto Dim- This is a power savings feature which will power down the screen if the touch screen and buttons are not in use. You can adjust this item in 5 second increments from 0 to 50 seconds. Setting this to 0 will keep your screen on all the time, but we do not recommend this, as it will cause your battery to drain faster.

Language—This device will display characters in over a dozen languages. If you accidentally change your language, return to the main menu, and select the settings icon (shown above), and then select the 3rd option from the top. At that point simply scroll through your options until you find the language you want. Each language is written in its respective characters.

Auto Off —This power savings setting allows you to set an auto power off timer, and a sleep mode which will power the device down if the device is inactive for the set period of time.

Memory Info—This screen will display the percentage of used memory and the total available memory.

Firmware version—This will display information on the firmware of the device.

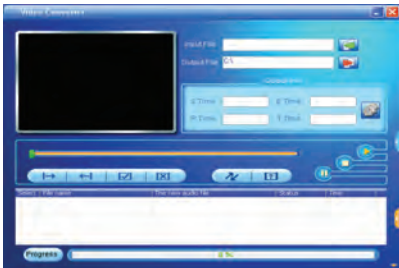
Video Conversion

If your video files will not play on your Eclipse V180 player, you can convert them using the conversion tool which is included with the device. To do so, you will need to first install the software.




When you connect the player to your computer, it will act as a removable disk drive. Open the drive, as described in the Copy and Paste section of the

manual. Inside, there is a folder called “Tools & Manual”. Open this folder, and then the “Tools” folder. Inside is a Setup.exe application. Run this file and follow the onscreen instructions. Please note that depending on your OS version and security settings you may need to right click on the file and select “run as administrator”

Once installed, you will have an item called “Media Player Utilities” in your programs list. Select this item and then “Video Converter”, or “AMV Converter”.



Once the conversion tool is open, the first step in actually converting and loading the file is to select the

file you wish to convert. Locate the “Input File” line towards the top of the window, and select the “Add file” button  and use the file selection window to select the file you want to convert and load. The second step is to select the location you want the converted file saved. Locate the “Output File” line immediately below the “Input File” line and select the “Video Path” button  and use the “browse for folder” window to select the save location. As this conversion tool is already calibrated to convert your files for optimal quality, you simply need to select the “Begin” button  and the player will convert the file for you.

Please note that if the player is connected to your computer when you open this tool, you will see an additional window to the right of the main window. This is the media player window.

Please note that the window will display the drive letter assigned to your player; if you have multiple players connected, it will have an option for each drive. Below the drive letters is a pie chart showing the amount of storage space available and the amount used. There

is also a check box giving you the option to automatically copy the video file to your drive. Selecting this will save you a step in loading your video files, as the converter will save a copy of the converted file to your computer, and then automatically load it on to the player as well!

Once the file has finished converting and loading on to your player , follow the “Safely Remove Hardware” instructions outlined above, and enjoy your video.

If you receive an error when attempting to convert a video file, then you likely lack the proper video codecs on your computer. There are several large codec packs which will contain the majority of the common video codecs, such as the K-Lite Mega codec pack, and the Storm codec pack. We recommend downloading them from a trusted source and installing them and attempting to convert the files then.

Limited Manufacturer's Warranty

1. MACH SPEED products carry a one year from date of purchase warranty. This warranty is nontransferable.

2. Mach-Speed Technologies warrants to the original registered end-user purchaser that Mach Speed products will be free from defects in materials and workmanship for one year from the date of new purchase. During the warranty period and upon proof of purchase the product will be repaired or replaced (with the same or a similar model, which may be a refurbished model) at Mach Speed Technologies option, without charge for either parts or labor. This warranty shall not apply if the product is modified, tampered with, misused, physically damaged, or subjected to abnormal working conditions (including, but not limited to, electrical, fire, and water damage).

THIS WARRANTY DOES NOT GUARANTEE YOU UNINTERRUPTED SERVICE. REPAIR OR REPLACEMENT AS PROVIDED UNDER THIS LIMITED WARRANTY IS THE EXCLUSIVE REMEDY OF THE PURCHASER.

To obtain service under this warranty, you must contact our Technical department at (580) 272-0035 to obtain an RMA number. Mach Speed Technologies will only replace or repair product that is sent to us with an authorized RMA number.

Return Merchandise Authorization (RMA):

1. Customers will be charged additional for testing and repackaging when returned “bad” items are found to have no problems or defects.
2. Items found to be out-of-warranty or not belonging to Mach Speed Technologies will not be replaced. Instead, they will be returned back to the customer freight-collect.
3. RMA’s will be shipped back to customer via UPS ground delivery. Express shipping will be at additional costs to the customer.
4. All RMA’s must be accompanied with a copy of original receipt or invoice with name, return address and phone number of customer.

Exchanges:

1. Items will not be cross-shipped for any reason.

2. A copy of the original receipt or invoice must accompany all exchanges.
3. All exchanges must be shipped freight pre-paid by the customer and include a pre-paid shipping label for shipment back to the customer. Furthermore, the customer is expected to insure all items being shipped back. Mach Speed Technologies is not responsible for any losses or damages for such equipment.
4. All sales are final. Mach Speed Technologies will not accept any returns for credit or refund.

Discrepancy & Shipping Damage:

1. For wrong items, missing items, shipping damage, or other discrepancy; customer should report to RMA department on the day in which the items were received. Any claims after one business day of receipt will not be honored.
2. For any shipping damage, customer must file a claim with their carrier immediately. All items are shipped insured, thus must be reported for coverage.
3. Customer is responsible for paying any freight charge caused by refused shipment or unclaimed goods.

4. Mach Speed Technologies will make every reasonable effort to deliver on time however; Mach Speed Technologies will not be liable for late or lost shipments.

Consequential Damages and Limitations:

1. Mach Speed Technologies shall not be liable for any failure to perform or delay in performing any of its obligations when such failure or delay is due to circumstances beyond its reasonable control, including, without limitation, any act of God, war, strike, riot, fire, flood, earthquake, lock-out, late or non-delivery by suppliers, shortage or unavailability of materials, components or transportation facilities, or any act, refusal to act, regulation, order or intervention of any governmental authority.

2. Under no circumstances shall Mach Speed Technologies be liable for any special, indirect, incidental or consequential damages of any kind or nature whatsoever, including, without limitation; lost goodwill, lost resale profits, loss of data or software, work stoppage or impairment of other goods, and whether arising out of breach of any express or implied warranty, breach of contract, tort (including

negligence), strict product liability or otherwise, even if advised of the possibility of such damage or if such damage could have been reasonably foreseen.

If at any point, you have questions about your player or experience an issue with your player, please feel free to contact our technicians at

mssupport@machspeed.com or by phone at 580-272-0035.

This device complies with Part 15 of the FCC Rules.

Operation is subject to the following two conditions:

- (1) this device may not cause harmful interference, and
- (2) this device must accept any interference received, including interference that may cause undesired operation.



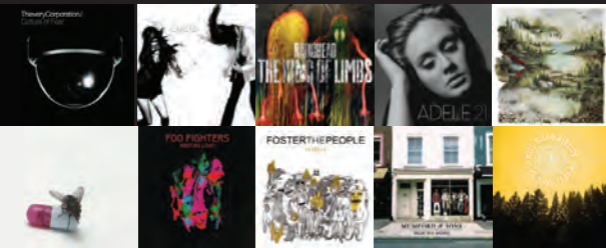
Download up to

20 FREE* SONGS

for your Mach Speed player!

- Total Compatibility: Listen on any MP3 player
- Music Ownership: High-quality MP3s, yours to keep forever

Redeem at: www.emusic.com/machsppedrocks



Terms and Conditions: Get a \$10 music credit (worth up to 20 song downloads) with an eMusic trial membership. Offer available to first-time eMusic music customers in the US, 18 years of age or older. Internet access, registration, and credit or debit card required. Your trial expires 14 days after registration or when you exceed your trial credit (whichever comes first) at which time you will automatically become a paying eMusic member. Cancel your membership before the end of your trial period or before you exceed your trial credit and you will not be charged. To cancel, visit www.emusic.com/cancel. Music plans start at \$11.99/month. Offer and eMusic's prices are subject to change without notice and are subject to eMusic's terms of use. Limited time offer. eMusic and the eMusic logo are trademarks of eMusic.com Inc, in the USA or other countries. All other trademarks are the property of their respective owners, none of whom is a partner or sponsor of eMusic, except Mach Speed, eMusic is not responsible for products, services or claims made by Mach Speed.