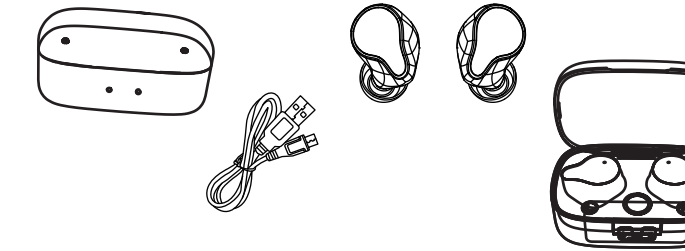
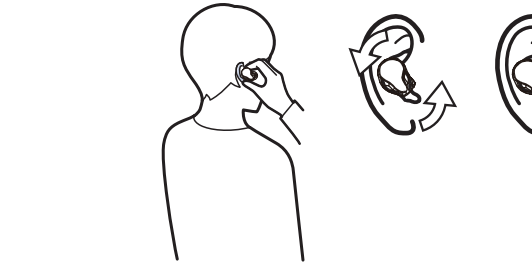


包装配件



佩戴方式



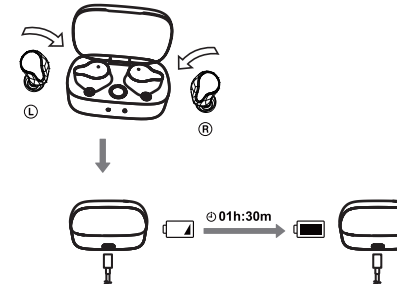
初次使用

右耳入仓检测

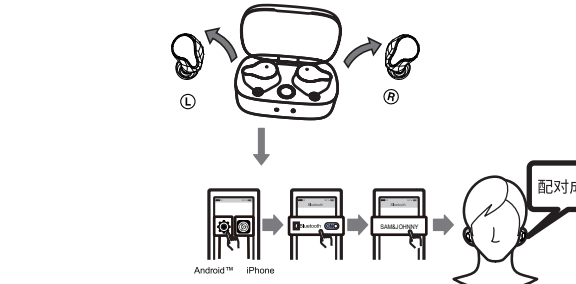
入仓检测接触良好,右边白灯常亮3秒左右

左耳入仓检测

入仓检测接触良好,左边白灯常亮3秒左右



开机连接



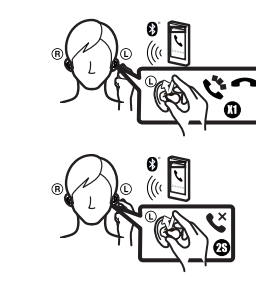
恢复出厂设置

将耳机放入充电盒内,长按充电盒触摸键10秒,充电盒发波形给耳机,让耳机进入恢复出厂设置

长按4秒双白灯闪两次/到10秒双白灯闪3次,表示完成所有操作



接听/挂断电话

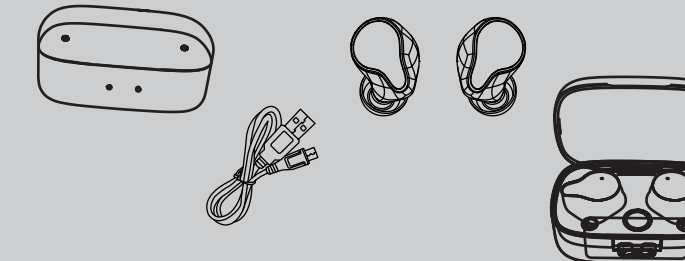


安全信息 警告!

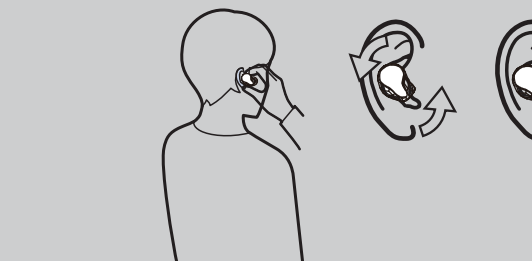
- 1.持续暴露于高噪音(超过85分贝)会导致听力永久受损。切勿长时间在高音量下收听。
- 2.电池不可自行更换,更换有爆炸危险,
- 3.使用通过CCC认证的对应规格电源适配器进行充电。
- 4.请勿私自篡改或拆卸耳机,否则会使保修失效。
- 5.注意您的周围环境,请不要在不安全的情况下使用耳机,例如驾驶车辆或者过马路等任何需要您注意周围环境的活动时。
- 6.请勿放置于高温环境中,有起火危险!



WHAT'S IN THE BOX



HOW TO WEAR



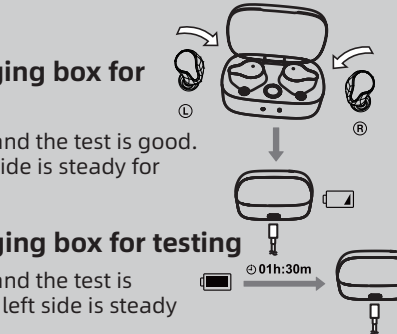
FIRST TIME USE

Right ear into the harging box for testing

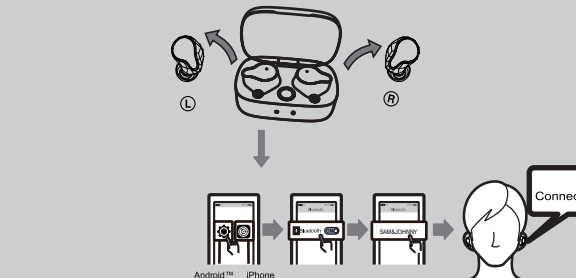
Put it into the charging box and the test is good. The white light on the right side is steady for about three seconds

Left ear into the charging box for testing

Put it into the charging box and the test is good. The white light on the left side is steady for about three seconds



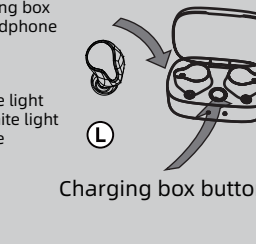
POWER ON & CONNECT



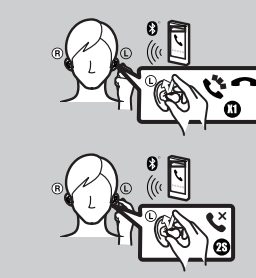
RESTORE FACTORY SETTINGS

Put the headphone into the charging box, long press the charging box touch key for 10 seconds, the charging box will send waveform to the headphone, let the headphone enter the factory settings.

Press and hold for 4 seconds and the double white light will flash twice / to 10 seconds and the double white light will flash 3 times, indicating that all operations are completed.



INCOMING CALL ANSWER/REJECT

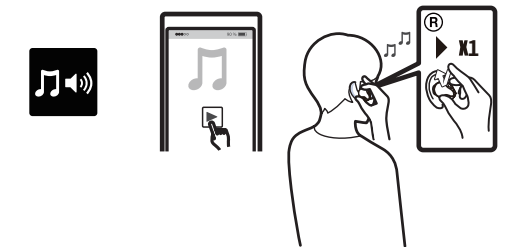


Safety information Warning!

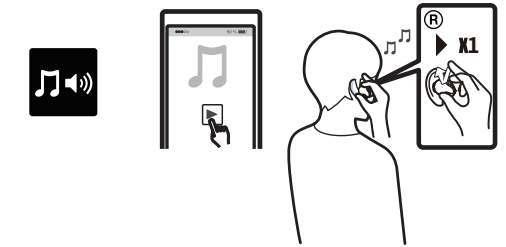
1. Continued exposure to high noise levels (over 85 dB) can lead to permanent hearing damage. Do not listen at high volumes for long periods of time.
2. Batteries should not be replaced by yourself as there is a risk of explosion.
3. Use the corresponding specification power adapter certified by CCC for charging.
4. Do not tamper with or disassemble the headphones. Otherwise, the warranty will be voided.
5. Pay attention to your surroundings, please do not use the headset in unsafe conditions, such as driving a vehicle or crossing the street and any other activities that require you to pay attention to your surroundings.
6. Do not place in high temperature environment, there is a risk of fire!



暂停/播放音乐

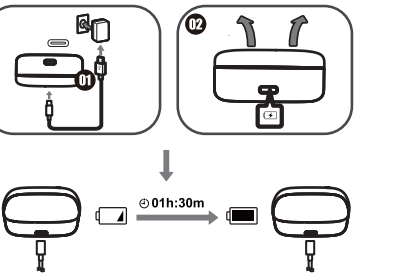


PLAY / PAUSE



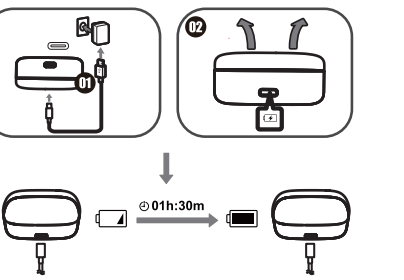
充电

在给充电盒充电过程,充满电后自动跳转给耳机充电。充电时双红灯慢闪,充满电时白灯常亮



CHARGING

During the charging process of the charging box, the headphone is automatically charged after it is fully charged. The double red light blinks slowly when charging, and the white light keeps on when fully charged



给耳机充电

给右耳机充电

充电仓右边白灯慢闪16S

给左耳机充电

充电仓左边白灯慢闪16S

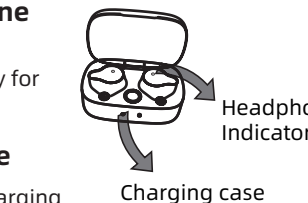
Charging the headphone

Charging the right headphone

White light on the right side of the charging compartment blinks slowly for 16 seconds.

Charging the left headphone

White light on the left side of the charging compartment flashes slowly for 16S



触摸功能

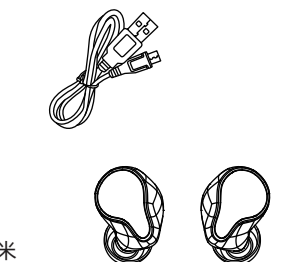
上一曲	音乐播放时, L长按2秒
下一曲	音乐播放时, R长按2秒
音量加	R双击(音乐播放时)
音量减	L双击(音乐播放时)
接听电话	单击(来电话)
挂断电话	单击(通话中)
拒接电话	来电时, 长按“触控区”2秒可拒接电话(左右耳皆可)
语音唤醒	音乐状态时, L/R三击, 即可启动语音助手
播放/暂停	单击耳机触控区暂停/播放音乐(左右耳机皆可)
开机	长按POWER键约(2)秒(提示音:Power on)
关机	长按POWER键约(5)秒(提示音:Power off)
中断拨出电话	单击(去电话)

Touch Control

Previous song	Press and hold the L button for two seconds while music is playing.
Next song	Press and hold the R button for two seconds while music is playing.
Volume +	R button double-tap (while music is playing)
Volume -	L button double-tap (while music is playing)
Answer the phone	Click (incoming call)
Hang up the phone	Click (on the call)
Rejection of call	when a call comes, long press the "touch zone", two seconds can reject the call (both right and left ear)
Voice wake-up	music playback state, L/R button three clicks, you can start the voice assistant
Play/Pause	click the touch area of the headset to pause/play (both left and right headphones can be used)
Power on	Press and hold the power button for about two seconds (Prompt tone: power on)
Power off	Press and hold the power button for about five seconds (Prompt tone: power off)
Interrupting an outgoing call	Click (outgoing call)

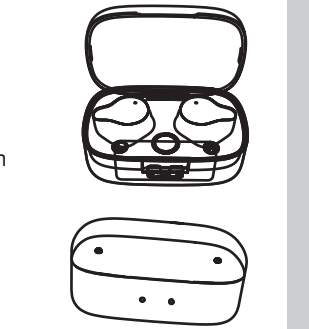
产品规格:

通话时间/音乐播放时间: 7 小时
 耳机: 45mAh x2
 充电时间: 充电盒<1.5 小时 耳机<1 小时
 充电输入: 5V/1A (TYPE-C)
 单个耳机重量: 4.9 克
 充电盒重量: 44.5 克
 双耳机尺寸: (长×宽×高) 3.8x1.7x1.8 厘米
 充电盒尺寸: (长×宽×高) 6.5x4.1 x2.9 厘米



Product Specifications:

Talking Time/Music Play Time: 7hs
 Headphones:45mAh x2
 Charging Time: Case<1.5hrs Headphones <1h
 Charging Input:5V/1A(TYPE-C)
 weight of individual headphones:4.9g
 Weight of charging box:44.5g
 Headphone Size: (LxWxH)3.8x1.7x1.8cm
 Charging Case Size: (LxWxH)6.5x4.1 x2.9cm



FCC ID: PWK-HM11

FCC Warning
 This device complies with part 15 of the FCC rules. Operation is subject to the following two conditions: (1) this device may not cause harmful interference, and (2) this device must accept any interference received, including interference that may cause undesired operation.
 Changes or modifications not expressly approved by the party responsible for compliance could void the user's authority to operate the equipment.
 NOTE: This equipment has been tested and found to comply with the limits for a Class B digital device, pursuant to part 15 of the FCC Rules. These limits are designed to provide reasonable protection against harmful interference in a residential installation. This equipment generates uses and can radiate radio frequency energy and, if not installed and used in accordance with the instructions, may cause harmful interference to radio communications. However, there is no guarantee that interference will not occur in a particular installation. If this equipment does cause harmful interference to radio or television reception, which can be determined by turning the equipment off and on, the user is encouraged to try to correct the interference by one or more of the following measures:
 • Reorient or relocate the receiving antenna.
 • Increase the separation between the equipment and receiver.
 • Connect the equipment into an outlet on a circuit different from that to which the receiver is connected.
 • Consult the dealer or an experienced radio/TV technician for help.
 Radiation Exposure Statement
 The device has been evaluated to meet general RF exposure requirement. The device can be used in portable exposure condition without restriction.

